

Data Path : Z:\pestpcbsrv\HPCHEM1\ECD_L\Data\PL102919\
 Data File : PL053860.D
 Signal(s) : Signal #1: ECD1A.ch Signal #2: ECD2B.ch
 Acq On : 29 Oct 2019 10:18
 Operator : SG\AJ
 Sample : PSTDCCC050
 Misc :
 ALS Vial : 4 Sample Multiplier: 1

Instrument :
 ECD_L
ClientSampleId :
 PSTDCCC050

Manual Integrations
APPROVED
 Ankita
 10/30/2019 11:37:49 AM

Integration File signal 1: autoint1.e
 Integration File signal 2: autoint2.e
 Quant Time: Oct 29 13:33:47 2019
 Quant Method : Z:\pestpcbsrv\HPCHEM1\ECD_L\methods\PL101919.M
 Quant Title : GC Extractables
 QLast Update : Fri Oct 18 13:56:08 2019
 Response via : Initial Calibration
 Integrator: ChemStation

Volume Inj. : 1 µl
 Signal #1 Phase : ZB-MR2 Signal #2 Phase: ZB-MR1
 Signal #1 Info : 30M x 0.32mm x0.2 Signal #2 Info : 30M x 0.32mm x0.5µm

	Compound	RT#1	RT#2	Resp#1	Resp#2	ng/ml	ng/ml

System Monitoring Compounds							
1)	SA Tetrachlo...	3.545	4.045	599.6E6	135.6E6	55.320	54.199
28)	SA Decachlor...	8.329	9.122	460.1E6	135.8E6	46.894	48.211
Target Compounds							
2)	A alpha-BHC	3.989	4.436	978.8E6	192.8E6	56.135	55.773
3)	MA gamma-BHC...	4.275	4.721	877.2E6	179.3E6	56.323	55.662
4)	MA Heptachlor	4.582	5.231	864.8E6	168.2E6	54.791	52.205
5)	MB Aldrin	4.834	5.536	823.2E6	161.2E6	57.584	54.061
6)	B beta-BHC	4.525	4.890	355.5E6	79688074	53.950	51.591m
7)	B delta-BHC	4.734	5.109	850.0E6	169.2E6	55.844	56.029
8)	B Heptachlor...	5.279	5.923	751.6E6	156.9E6	55.674	53.788
9)	A Endosulfan I	5.621	6.279	678.8E6	143.0E6	55.225	52.730
10)	B gamma-Chl...	5.507	6.155	758.3E6	156.5E6	55.577	53.626m
11)	B alpha-Chl...	5.566	6.229	728.3E6	155.0E6	54.749	53.098
12)	B 4,4'-DDE	5.729	6.386	659.5E6	148.5E6	55.505	52.740
13)	MA Dieldrin	5.865	6.536	718.9E6	150.6E6	55.161	52.792
14)	MA Endrin	6.124	6.754	608.9E6	119.7E6	52.531	49.322
15)	B Endosulfa...	6.397	6.963	585.0E6	130.3E6	52.321	50.995
16)	A 4,4'-DDD	6.245	6.875	532.7E6	117.6E6	59.854m	56.420
17)	MA 4,4'-DDT	6.488	7.173	486.1E6	110.4E6	49.070	47.721
18)	B Endrin al...	6.564	7.087	456.2E6	109.1E6	49.750	49.660
19)	B Endosulfa...	6.778	7.309	497.4E6	121.6E6	48.904	49.540
20)	A Methoxychlor	7.034	7.631	228.1E6	58460312	46.265	45.007
21)	B Endrin ke...	7.272	7.781	531.7E6	129.7E6	49.387	50.314
22)	Mirex	7.465	8.235	407.2E6	101.5E6	47.611	50.156

(f)=RT Delta > 1/2 Window (#)=Amounts differ by > 25% (m)=manual int.

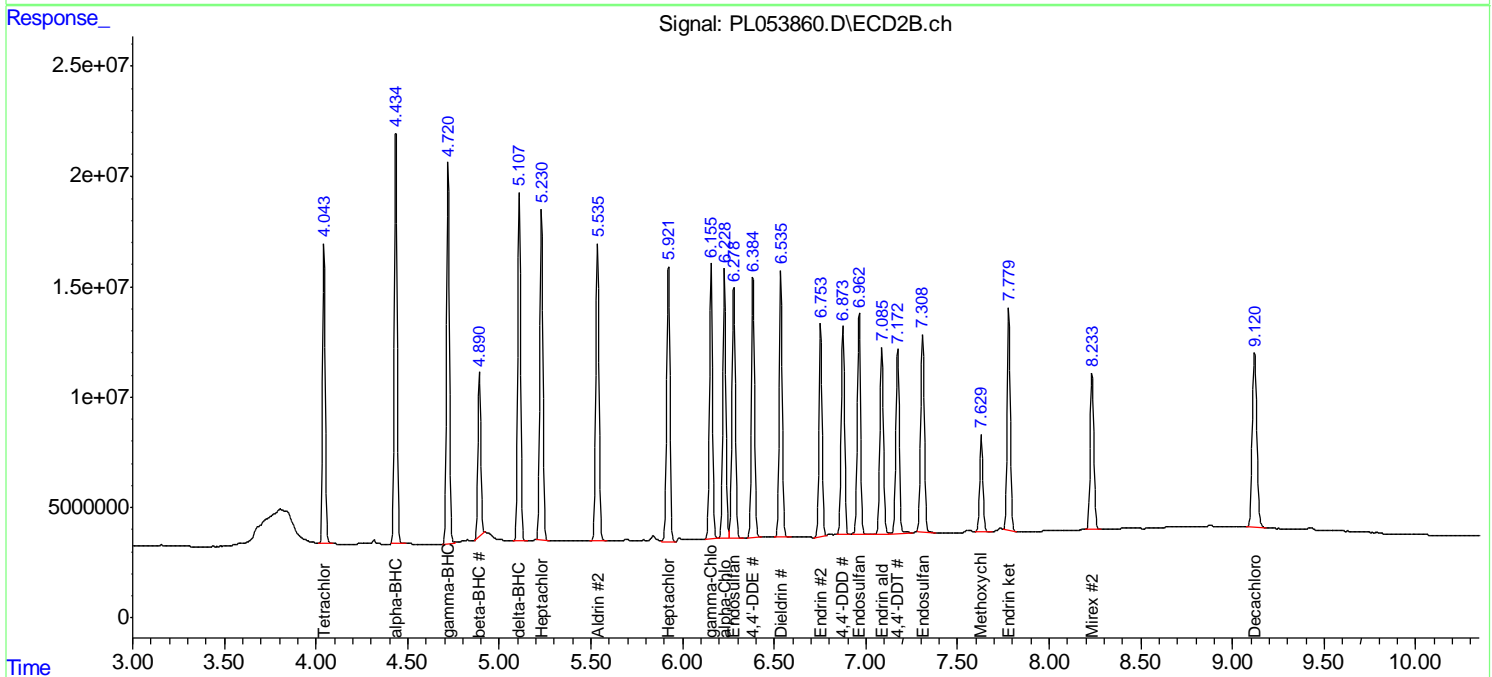
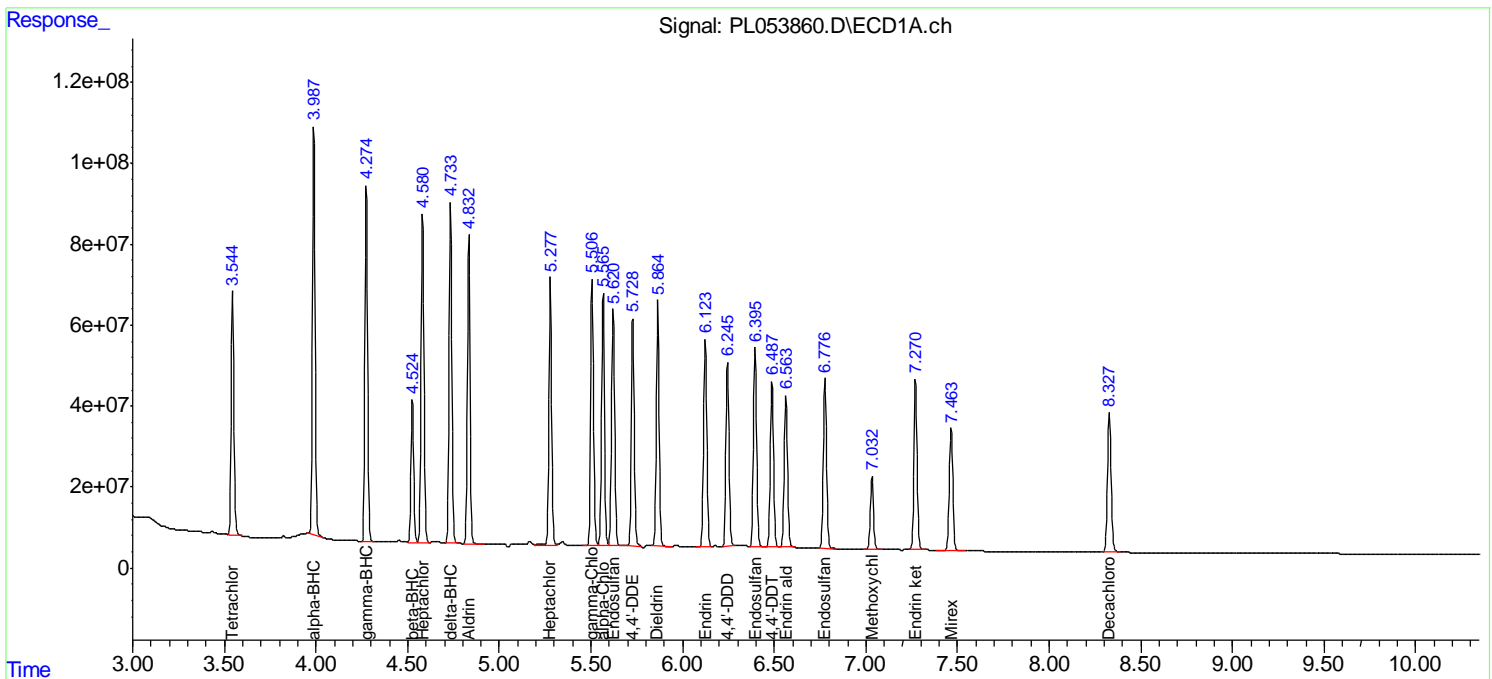
Data Path : Z:\pestpcbsrv\HPCHEM1\ECD_L\Data\PL102919\
 Data File : PL053860.D
 Signal(s) : Signal #1: ECD1A.ch Signal #2: ECD2B.ch
 Acq On : 29 Oct 2019 10:18
 Operator : SG\AJ
 Sample : PSTDCCC050
 Misc :
 ALS Vial : 4 Sample Multiplier: 1

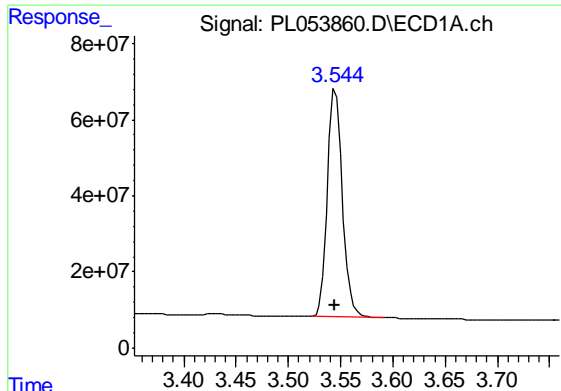
Instrument :
 ECD_L
Client Sampled :
 PSTDCCC050

Manual Integrations
APPROVED
 Ankita
 10/30/2019 11:37:49 AM

Integration File signal 1: autoint1.e
 Integration File signal 2: autoint2.e
 Quant Time: Oct 29 13:33:47 2019
 Quant Method : Z:\pestpcbsrv\HPCHEM1\ECD_L\methods\PL101919.M
 Quant Title : GC Extractables
 QLast Update : Fri Oct 18 13:56:08 2019
 Response via : Initial Calibration
 Integrator: ChemStation

Volume Inj. : 1 µl
 Signal #1 Phase : ZB-MR2 Signal #2 Phase: ZB-MR1
 Signal #1 Info : 30M x 0.32mm x0.2 Signal #2 Info : 30M x 0.32mm x0.5µm

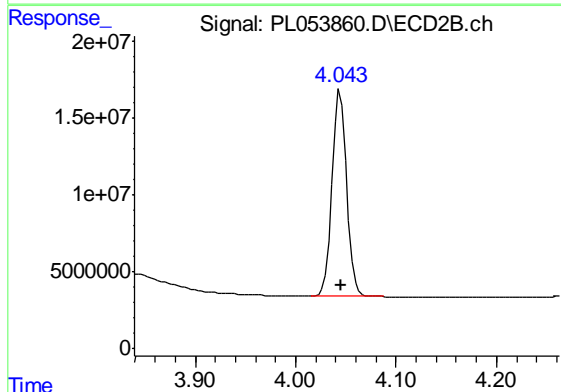




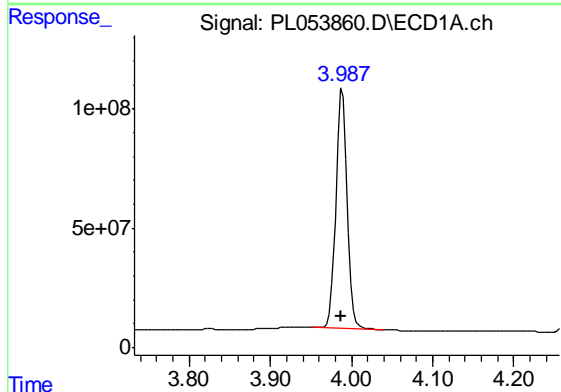
#1 Tetrachloro-m-xylene
 R.T.: 3.545 min
 Delta R.T.: 0.001 min
 Response: 599629697
 Conc: 55.32 ng/ml

Instrument :
 ECD_L
 ClientSampleId :
 PSTDCCC050

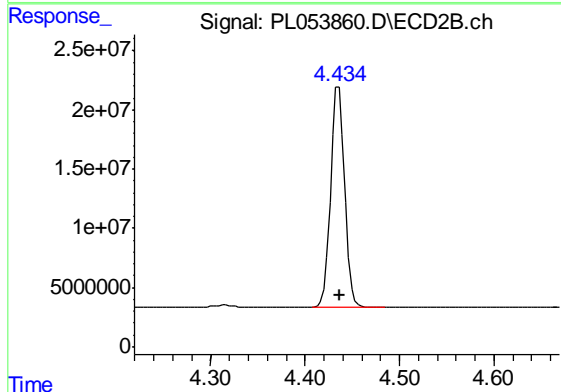
Manual Integrations
 APPROVED
 Ankita
 10/30/2019 11:37:49 AM



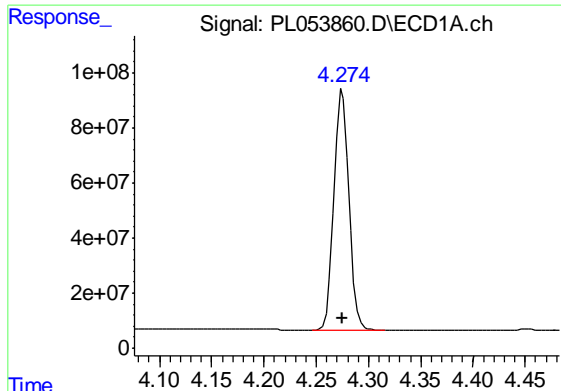
#1 Tetrachloro-m-xylene
 R.T.: 4.045 min
 Delta R.T.: -0.001 min
 Response: 135627373
 Conc: 54.20 ng/ml



#2 alpha-BHC
 R.T.: 3.989 min
 Delta R.T.: 0.000 min
 Response: 978798889
 Conc: 56.14 ng/ml



#2 alpha-BHC
 R.T.: 4.436 min
 Delta R.T.: 0.000 min
 Response: 192812983
 Conc: 55.77 ng/ml



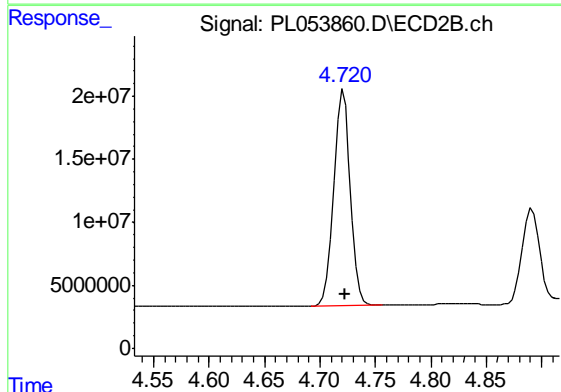
#3 gamma-BHC (Lindane)

R.T.: 4.275 min
 Delta R.T.: 0.000 min
 Response: 877160282
 Conc: 56.32 ng/ml

Instrument :
 ECD_L
 ClientSampled :
 PSTDCCC050

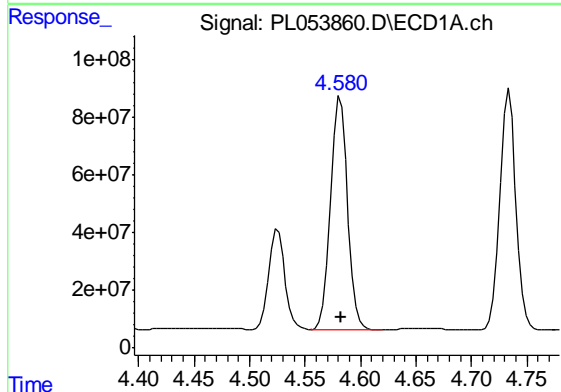
Manual Integrations
 APPROVED

Ankita
 10/30/2019 11:37:49 AM



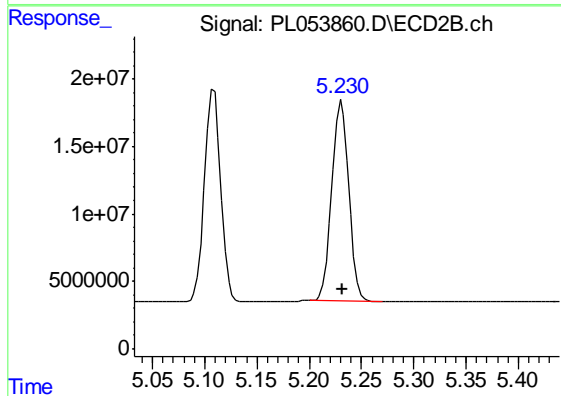
#3 gamma-BHC (Lindane)

R.T.: 4.721 min
 Delta R.T.: -0.001 min
 Response: 179252722
 Conc: 55.66 ng/ml



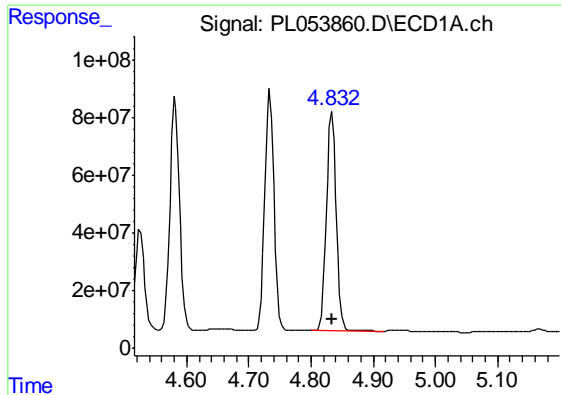
#4 Heptachlor

R.T.: 4.582 min
 Delta R.T.: 0.000 min
 Response: 864763999
 Conc: 54.79 ng/ml



#4 Heptachlor

R.T.: 5.231 min
 Delta R.T.: -0.001 min
 Response: 168212495
 Conc: 52.20 ng/ml



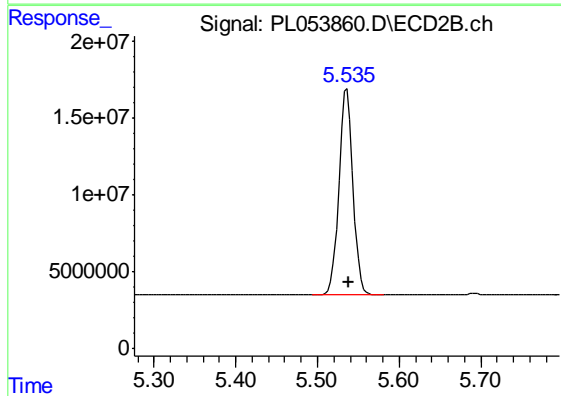
#5 Aldrin

R.T.: 4.834 min
 Delta R.T.: 0.000 min
 Response: 823208326
 Conc: 57.58 ng/ml

Instrument :
 ECD_L
 ClientSampleId :
 PSTDCCC050

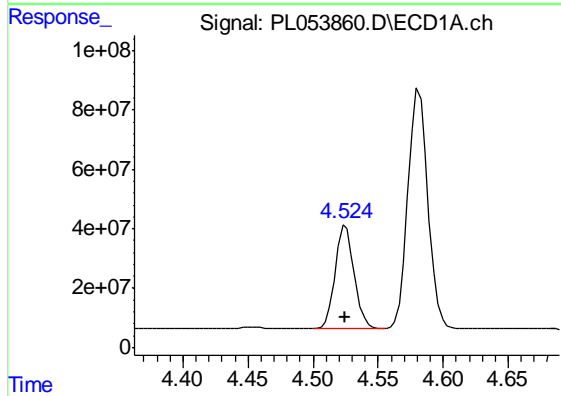
Manual Integrations
 APPROVED

Ankita
 10/30/2019 11:37:49 AM



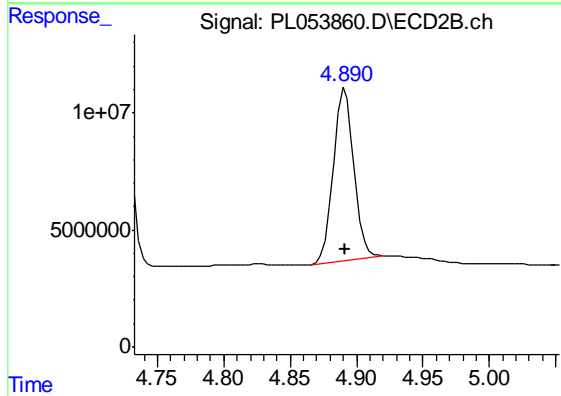
#5 Aldrin

R.T.: 5.536 min
 Delta R.T.: -0.002 min
 Response: 161186388
 Conc: 54.06 ng/ml



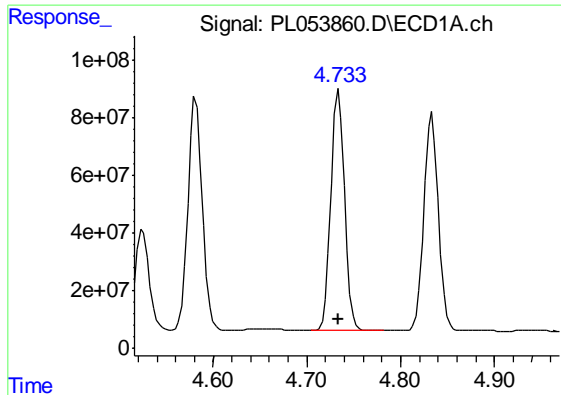
#6 beta-BHC

R.T.: 4.525 min
 Delta R.T.: 0.000 min
 Response: 355526161
 Conc: 53.95 ng/ml



#6 beta-BHC

R.T.: 4.890 min
 Delta R.T.: -0.002 min
 Response: 79688074
 Conc: 51.59 ng/ml m



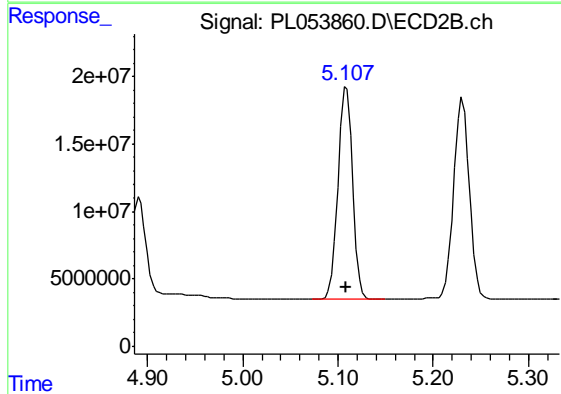
#7 delta-BHC

R.T.: 4.734 min
 Delta R.T.: 0.000 min
 Response: 850003213
 Conc: 55.84 ng/ml

Instrument :
 ECD_L
 ClientSampleId :
 PSTDCCC050

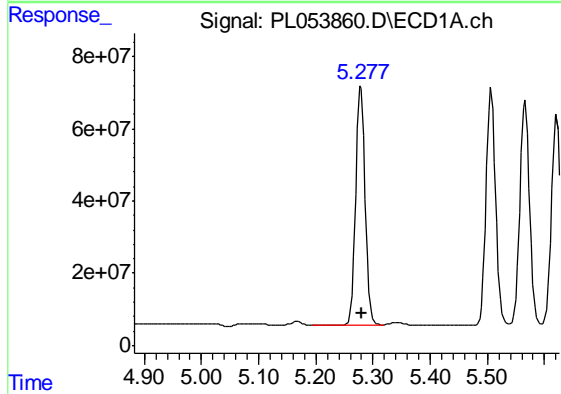
Manual Integrations
 APPROVED

Ankita
 10/30/2019 11:37:49 AM



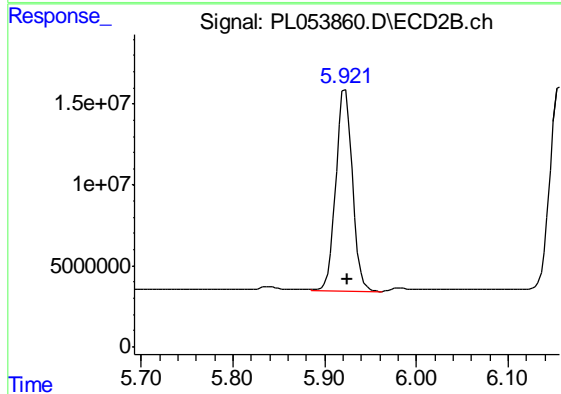
#7 delta-BHC

R.T.: 5.109 min
 Delta R.T.: 0.000 min
 Response: 169242081
 Conc: 56.03 ng/ml



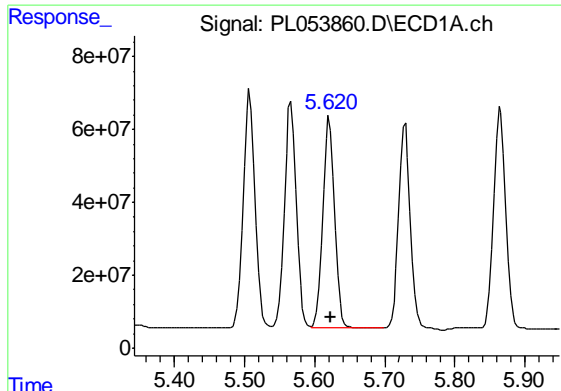
#8 Heptachlor epoxide

R.T.: 5.279 min
 Delta R.T.: -0.001 min
 Response: 751551379
 Conc: 55.67 ng/ml



#8 Heptachlor epoxide

R.T.: 5.923 min
 Delta R.T.: -0.002 min
 Response: 156867705
 Conc: 53.79 ng/ml

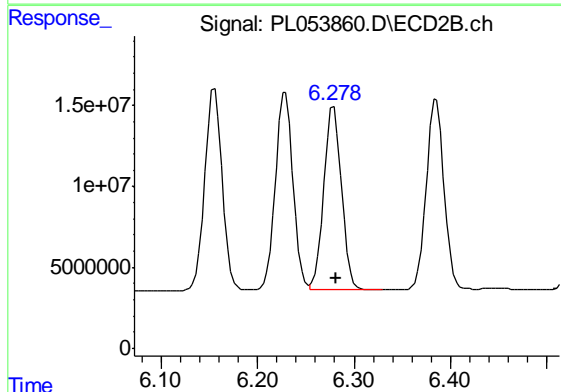


#9 Endosulfan I

R.T.: 5.621 min
 Delta R.T.: -0.001 min
 Response: 678825649
 Conc: 55.22 ng/ml

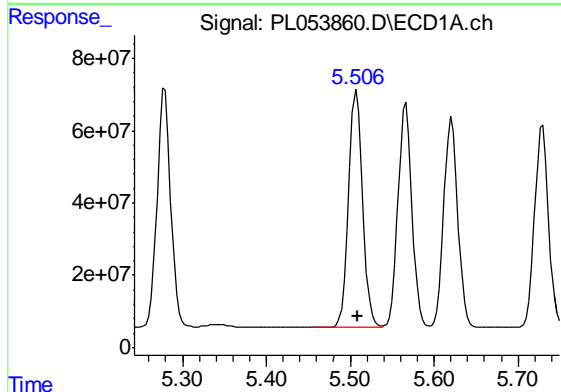
Instrument :
 ECD_L
 ClientSampleId :
 PSTDCCC050

Manual Integrations
 APPROVED
 Ankita
 10/30/2019 11:37:49 AM



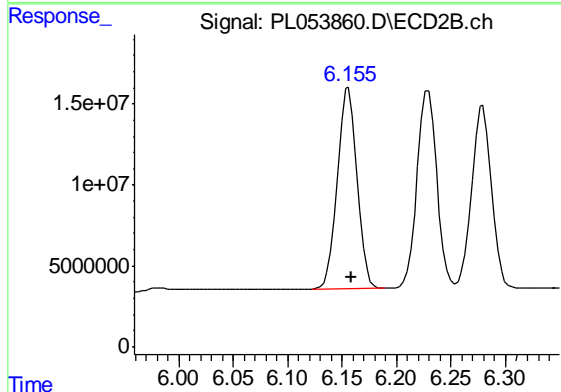
#9 Endosulfan I

R.T.: 6.279 min
 Delta R.T.: -0.002 min
 Response: 142963129
 Conc: 52.73 ng/ml



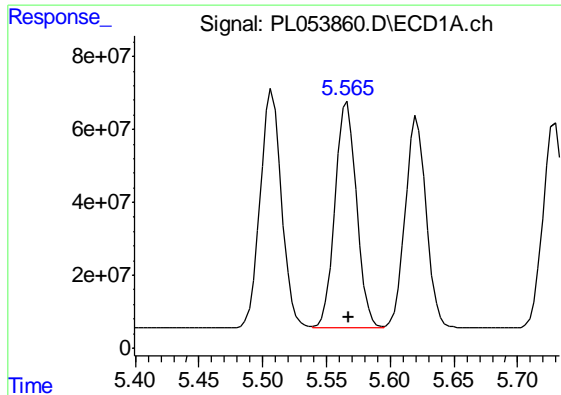
#10 gamma-Chlordane

R.T.: 5.507 min
 Delta R.T.: -0.001 min
 Response: 758266266
 Conc: 55.58 ng/ml



#10 gamma-Chlordane

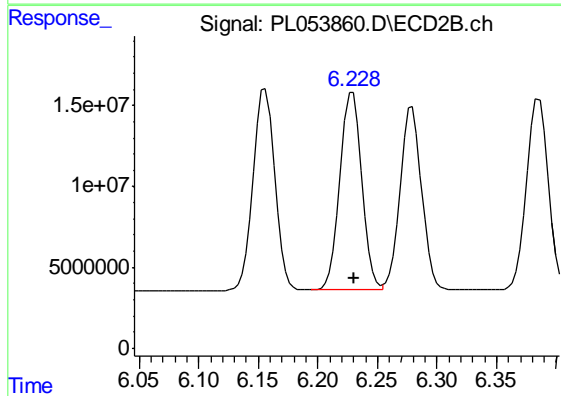
R.T.: 6.155 min
 Delta R.T.: -0.003 min
 Response: 156468901
 Conc: 53.63 ng/ml m



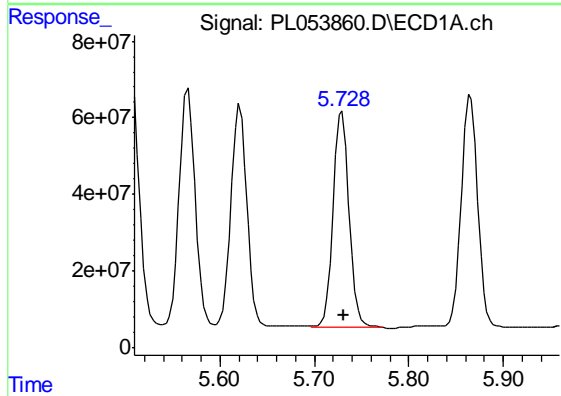
#11 alpha-Chlordane
 R.T.: 5.566 min
 Delta R.T.: -0.001 min
 Response: 728348042
 Conc: 54.75 ng/ml

Instrument :
 ECD_L
ClientSampled :
 PSTDCCC050

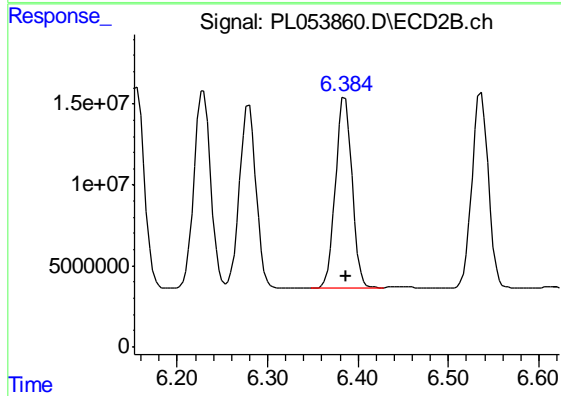
Manual Integrations
APPROVED
 Ankita
 10/30/2019 11:37:49 AM



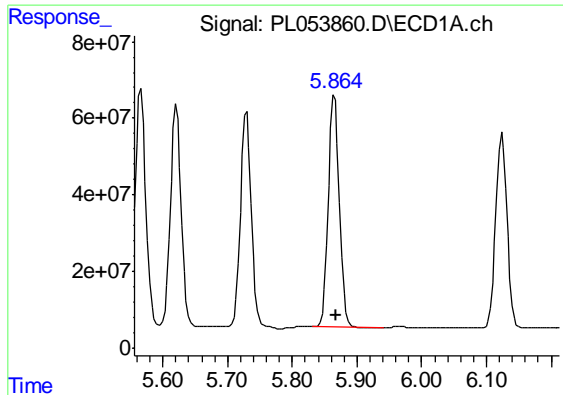
#11 alpha-Chlordane
 R.T.: 6.229 min
 Delta R.T.: -0.002 min
 Response: 155004606
 Conc: 53.10 ng/ml



#12 4,4'-DDE
 R.T.: 5.729 min
 Delta R.T.: -0.001 min
 Response: 659523880
 Conc: 55.51 ng/ml



#12 4,4'-DDE
 R.T.: 6.386 min
 Delta R.T.: -0.001 min
 Response: 148534011
 Conc: 52.74 ng/ml



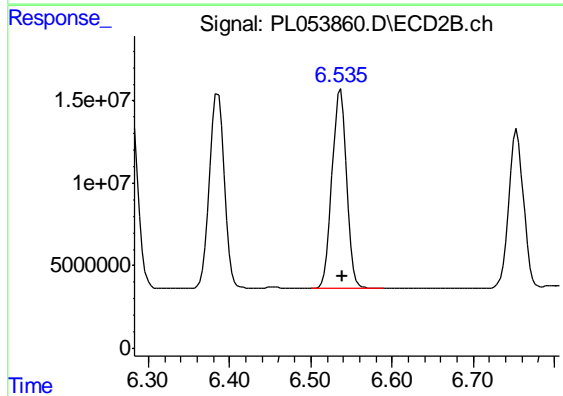
#13 Dieldrin

R.T.: 5.865 min
 Delta R.T.: -0.002 min
 Response: 718936531
 Conc: 55.16 ng/ml

Instrument :
 ECD_L
 ClientSampleId :
 PSTDCCC050

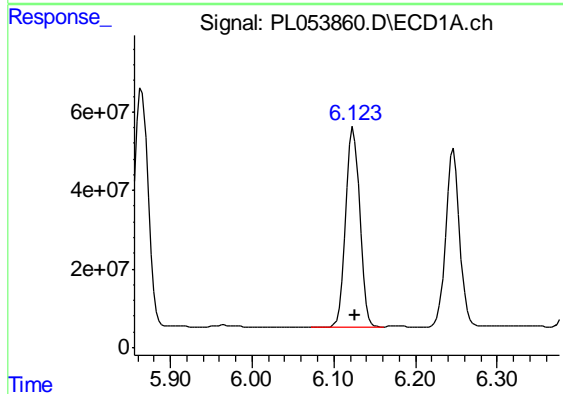
Manual Integrations
 APPROVED

Ankita
 10/30/2019 11:37:49 AM



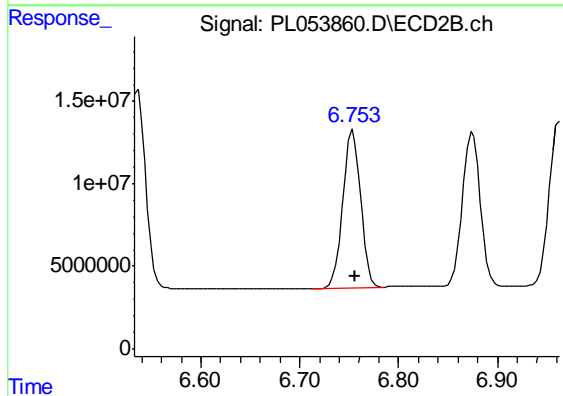
#13 Dieldrin

R.T.: 6.536 min
 Delta R.T.: -0.002 min
 Response: 150648241
 Conc: 52.79 ng/ml



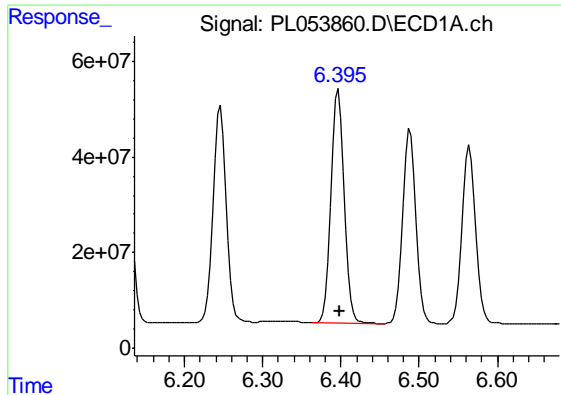
#14 Endrin

R.T.: 6.124 min
 Delta R.T.: -0.002 min
 Response: 608897973
 Conc: 52.53 ng/ml



#14 Endrin

R.T.: 6.754 min
 Delta R.T.: -0.002 min
 Response: 119713548
 Conc: 49.32 ng/ml



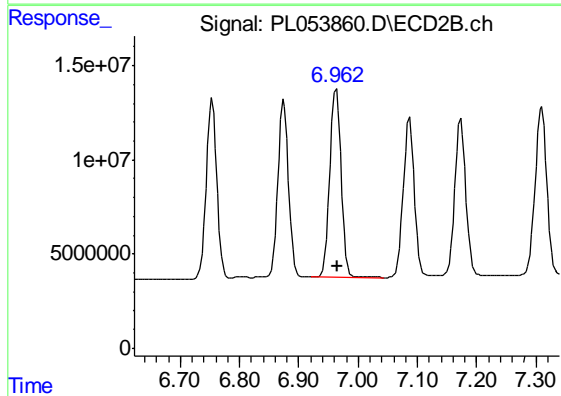
#15 Endosulfan II

R.T.: 6.397 min
 Delta R.T.: -0.002 min
 Response: 584967849
 Conc: 52.32 ng/ml

Instrument :
 ECD_L
 ClientSampleId :
 PSTDCCC050

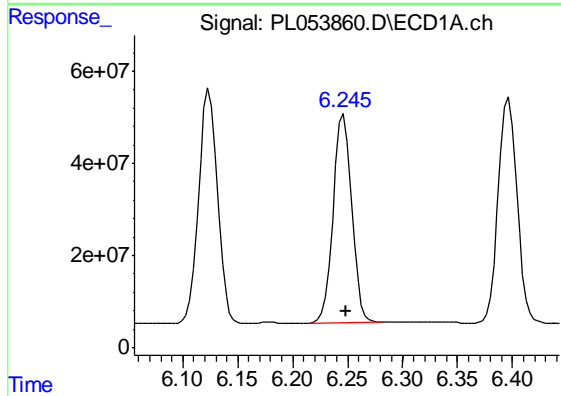
Manual Integrations
 APPROVED

Ankita
 10/30/2019 11:37:49 AM



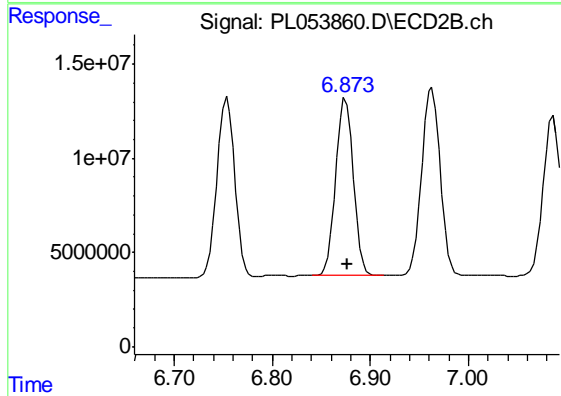
#15 Endosulfan II

R.T.: 6.963 min
 Delta R.T.: -0.002 min
 Response: 130267271
 Conc: 51.00 ng/ml



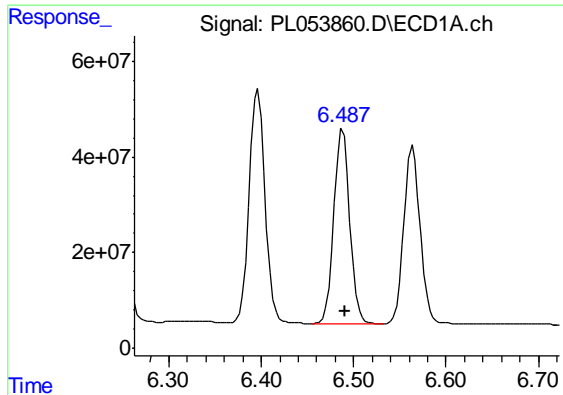
#16 4,4'-DDD

R.T.: 6.245 min
 Delta R.T.: -0.003 min
 Response: 532696961
 Conc: 59.85 ng/ml m



#16 4,4'-DDD

R.T.: 6.875 min
 Delta R.T.: -0.002 min
 Response: 117577569
 Conc: 56.42 ng/ml



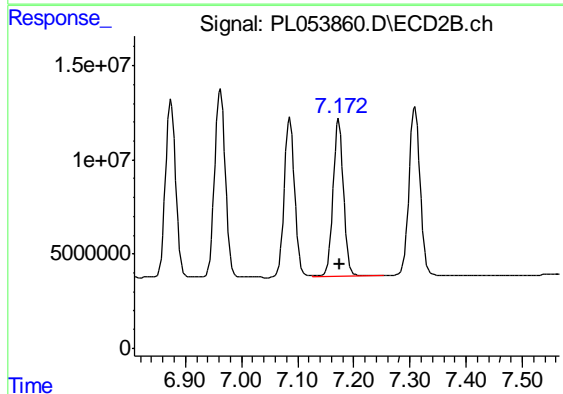
#17 4,4'-DDT

R.T.: 6.488 min
 Delta R.T.: -0.003 min
 Response: 486104388
 Conc: 49.07 ng/ml

Instrument :
 ECD_L
 ClientSampleId :
 PSTDCCC050

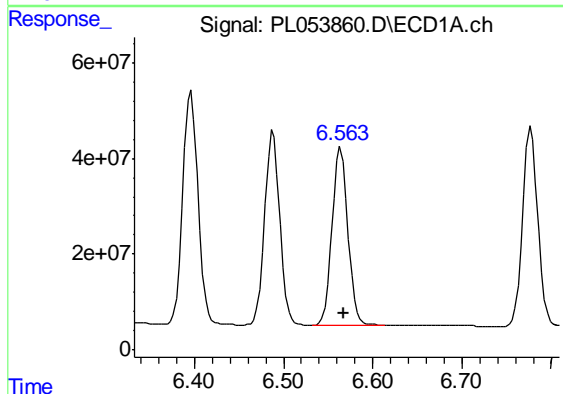
Manual Integrations
 APPROVED

Ankita
 10/30/2019 11:37:49 AM



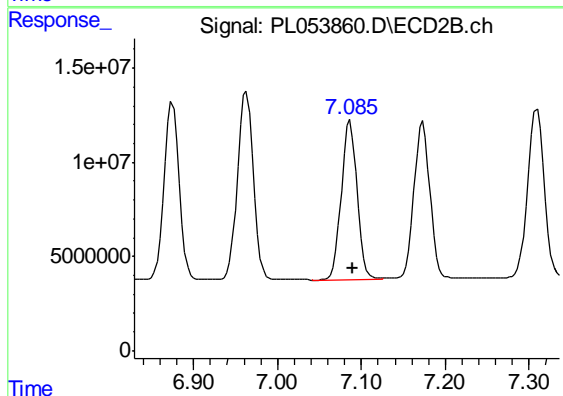
#17 4,4'-DDT

R.T.: 7.173 min
 Delta R.T.: -0.002 min
 Response: 110355949
 Conc: 47.72 ng/ml



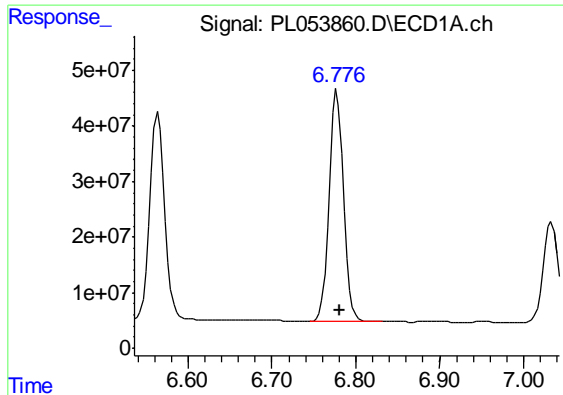
#18 Endrin aldehyde

R.T.: 6.564 min
 Delta R.T.: -0.003 min
 Response: 456169944
 Conc: 49.75 ng/ml



#18 Endrin aldehyde

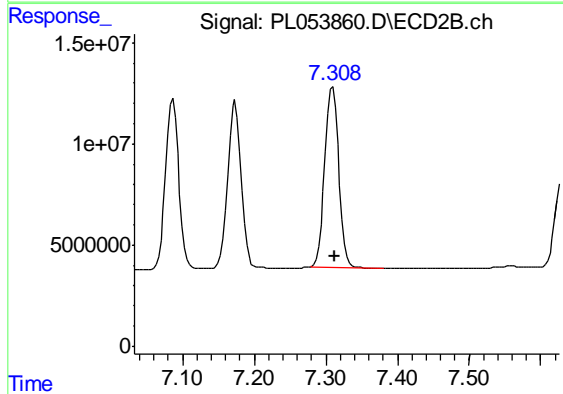
R.T.: 7.087 min
 Delta R.T.: -0.002 min
 Response: 109092847
 Conc: 49.66 ng/ml



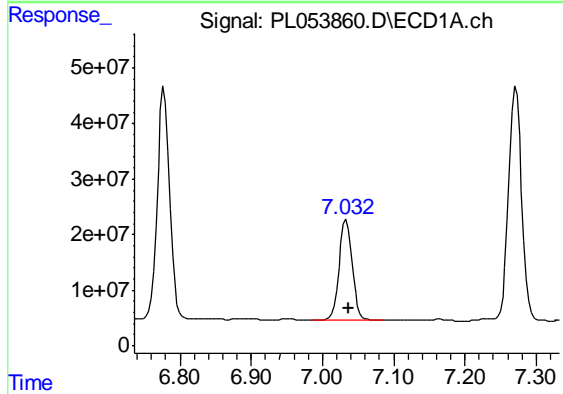
#19 Endosulfan Sulfate
 R.T.: 6.778 min
 Delta R.T.: -0.004 min
 Response: 497435331
 Conc: 48.90 ng/ml

Instrument :
 ECD_L
 ClientSampleId :
 PSTDCCC050

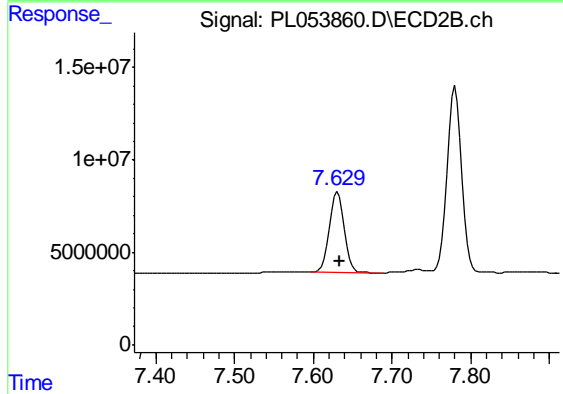
Manual Integrations
 APPROVED
 Ankita
 10/30/2019 11:37:49 AM



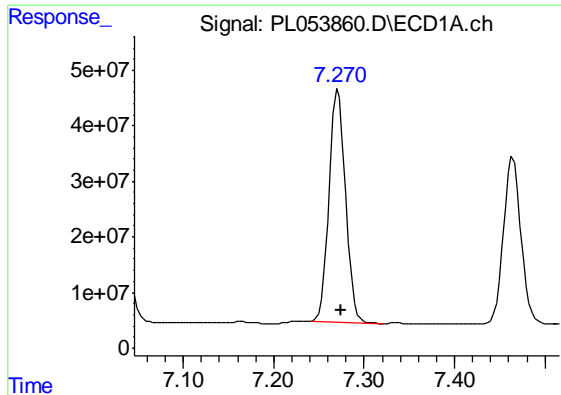
#19 Endosulfan Sulfate
 R.T.: 7.309 min
 Delta R.T.: -0.002 min
 Response: 121551290
 Conc: 49.54 ng/ml



#20 Methoxychlor
 R.T.: 7.034 min
 Delta R.T.: -0.003 min
 Response: 228103756
 Conc: 46.27 ng/ml



#20 Methoxychlor
 R.T.: 7.631 min
 Delta R.T.: -0.003 min
 Response: 58460312
 Conc: 45.01 ng/ml



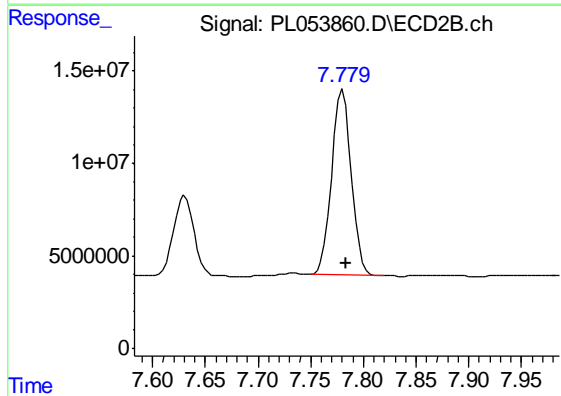
#21 Endrin ketone

R.T.: 7.272 min
Delta R.T.: -0.004 min
Response: 531655386
Conc: 49.39 ng/ml

Instrument :
ECD_L
ClientSampleId :
PSTDCCC050

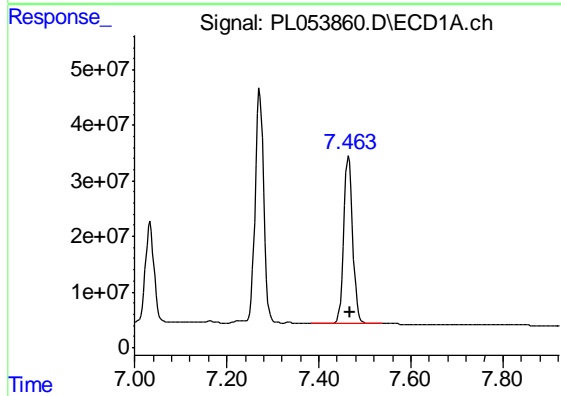
Manual Integrations
APPROVED

Ankita
10/30/2019 11:37:49 AM



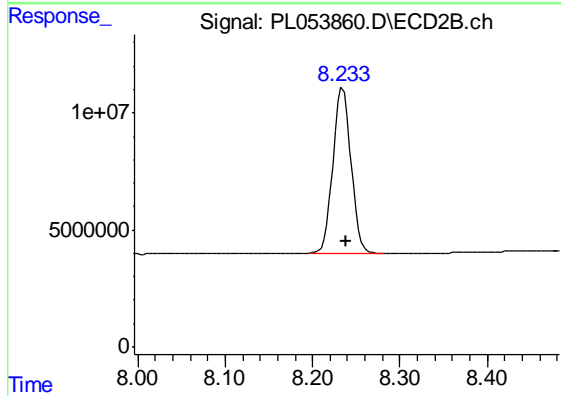
#21 Endrin ketone

R.T.: 7.781 min
Delta R.T.: -0.003 min
Response: 129733036
Conc: 50.31 ng/ml



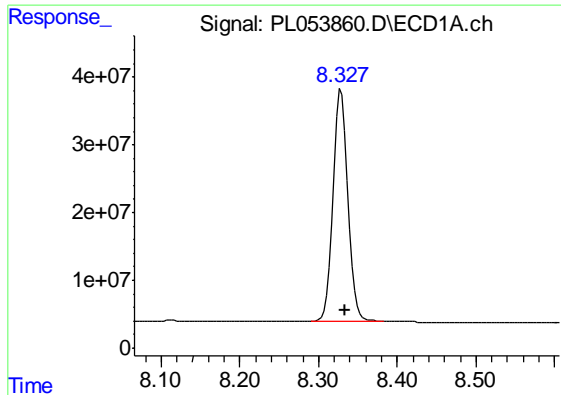
#22 Mirex

R.T.: 7.465 min
Delta R.T.: -0.004 min
Response: 407216254
Conc: 47.61 ng/ml



#22 Mirex

R.T.: 8.235 min
Delta R.T.: -0.004 min
Response: 101467871
Conc: 50.16 ng/ml



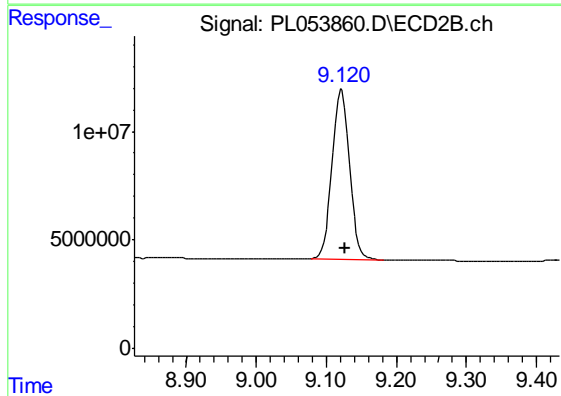
#28 Decachlorobiphenyl

R.T.: 8.329 min
Delta R.T.: -0.005 min
Response: 460106036
Conc: 46.89 ng/ml

Instrument :
ECD_L
ClientSampled :
PSTDCCC050

Manual Integrations
APPROVED

Ankita
10/30/2019 11:37:49 AM



#28 Decachlorobiphenyl

R.T.: 9.122 min
Delta R.T.: -0.004 min
Response: 135762282
Conc: 48.21 ng/ml