

Data Path : Z:\pestpcbsrv\HPCHEM1\ECD_L\Data\PL102919\
 Data File : PL053880.D
 Signal(s) : Signal #1: ECD1A.ch Signal #2: ECD2B.ch
 Acq On : 29 Oct 2019 17:43
 Operator : SG\AJ
 Sample : PB124393BS
 Misc :
 ALS Vial : 20 Sample Multiplier: 1

Instrument :
 ECD_L
 ClientSampleId :
 PB124393BS

Integration File signal 1: autoint1.e
 Integration File signal 2: autoint2.e
 Quant Time: Oct 30 07:17:23 2019
 Quant Method : Z:\pestpcbsrv\HPCHEM1\ECD_L\methods\PL101919.M
 Quant Title : GC Extractables
 QLast Update : Fri Oct 18 13:56:08 2019
 Response via : Initial Calibration
 Integrator: ChemStation

Volume Inj. : 1 µl
 Signal #1 Phase : ZB-MR2 Signal #2 Phase: ZB-MR1
 Signal #1 Info : 30M x 0.32mm x0.2 Signal #2 Info : 30M x 0.32mm x0.5µm

| Compound | RT#1 | RT#2 | Resp#1 | Resp#2 | ng/ml | ng/ml |
|-----------------------------|-------|-------|---------|----------|--------|--------|
| ----- | | | | | | |
| System Monitoring Compounds | | | | | | |
| 1) SA Tetrachlo... | 3.542 | 4.044 | 211.4E6 | 53858859 | 19.506 | 21.523 |
| 28) SA Decachlor... | 8.325 | 9.120 | 169.7E6 | 50361918 | 17.300 | 17.884 |
| Target Compounds | | | | | | |
| 2) A alpha-BHC | 3.985 | 4.435 | 950.6E6 | 195.4E6 | 54.516 | 56.510 |
| 3) MA gamma-BHC... | 4.272 | 4.720 | 863.6E6 | 183.6E6 | 55.452 | 56.999 |
| 4) MA Heptachlor | 4.578 | 5.230 | 875.8E6 | 177.8E6 | 55.488 | 55.169 |
| 5) MB Aldrin | 4.830 | 5.535 | 836.4E6 | 171.8E6 | 58.505 | 57.607 |
| 6) B beta-BHC | 4.522 | 4.891 | 356.5E6 | 85198238 | 54.103 | 55.158 |
| 7) B delta-BHC | 4.731 | 5.108 | 671.8E6 | 141.3E6 | 44.138 | 46.783 |
| 8) B Heptachlo... | 5.276 | 5.922 | 746.4E6 | 159.3E6 | 55.292 | 54.636 |
| 9) A Endosulfan I | 5.618 | 6.278 | 671.6E6 | 149.2E6 | 54.637 | 55.020 |
| 10) B gamma-Chl... | 5.504 | 6.155 | 741.2E6 | 157.0E6 | 54.324 | 53.821 |
| 11) B alpha-Chl... | 5.563 | 6.228 | 713.3E6 | 159.6E6 | 53.618 | 54.674 |
| 12) B 4,4'-DDE | 5.726 | 6.384 | 682.3E6 | 158.6E6 | 57.420 | 56.315 |
| 13) MA Dieldrin | 5.862 | 6.535 | 710.0E6 | 157.0E6 | 54.474 | 55.026 |
| 14) MA Endrin | 6.120 | 6.753 | 597.7E6 | 125.7E6 | 51.569 | 51.805 |
| 15) B Endosulfa... | 6.394 | 6.962 | 569.3E6 | 141.6E6 | 50.918 | 55.434 |
| 16) A 4,4'-DDD | 6.243 | 6.874 | 533.7E6 | 128.8E6 | 59.971 | 61.803 |
| 17) MA 4,4'-DDT | 6.486 | 7.173 | 481.3E6 | 117.4E6 | 48.581 | 50.788 |
| 18) B Endrin al... | 6.562 | 7.086 | 462.1E6 | 122.1E6 | 50.393 | 55.568 |
| 19) B Endosulfa... | 6.775 | 7.308 | 524.5E6 | 129.0E6 | 51.561 | 52.564 |
| 20) A Methoxychlor | 7.030 | 7.630 | 237.2E6 | 62950784 | 48.103 | 48.464 |
| 21) B Endrin ke... | 7.269 | 7.779 | 579.0E6 | 141.6E6 | 53.784 | 54.907 |
| 22) Mirex | 7.462 | 8.235 | 399.4E6 | 103.1E6 | 46.702 | 50.971 |

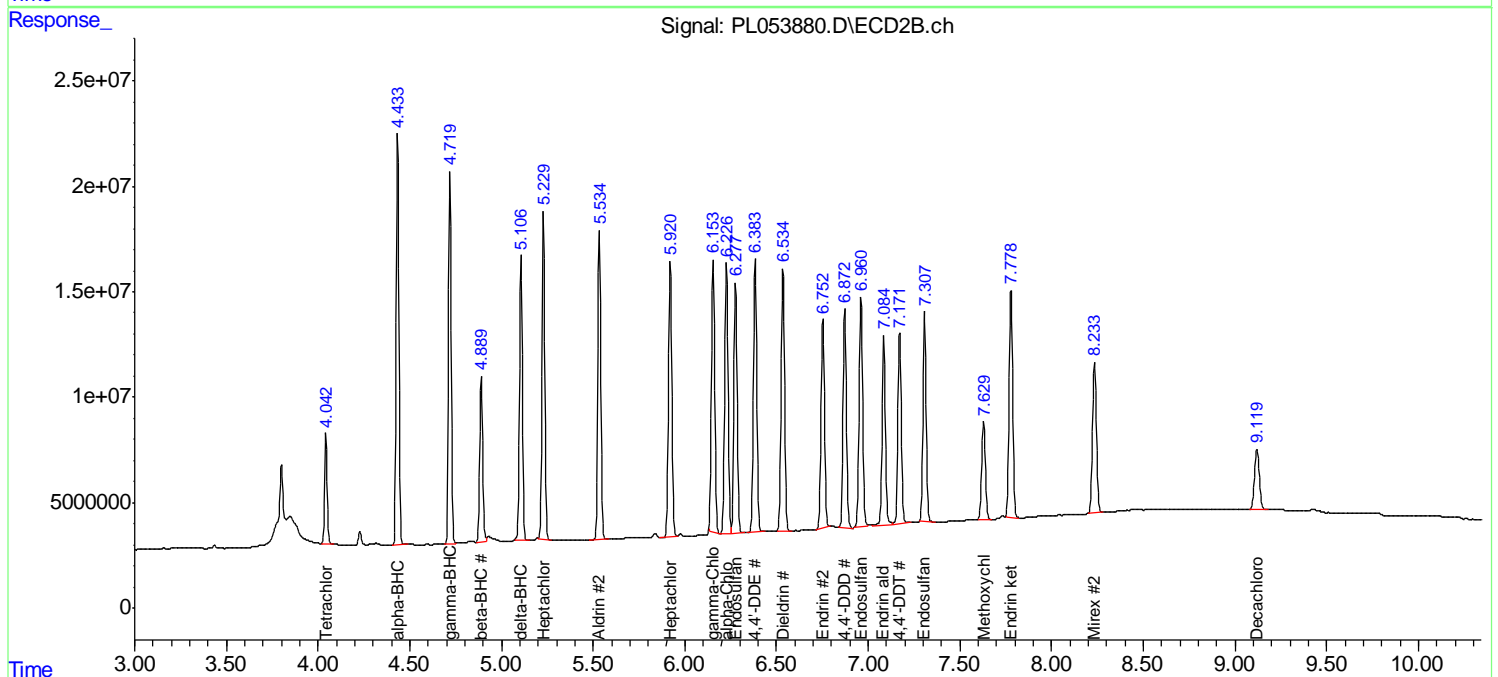
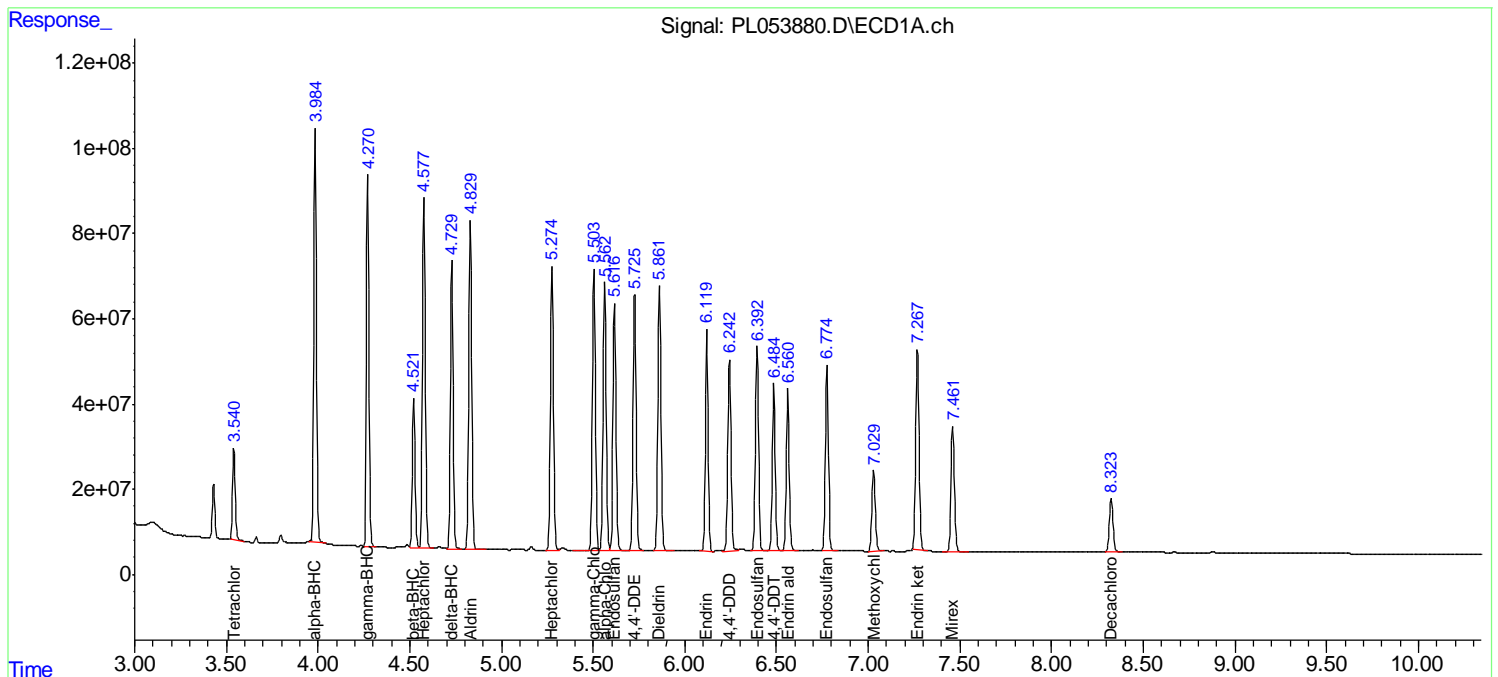
(f)=RT Delta > 1/2 Window (#)=Amounts differ by > 25% (m)=manual int.

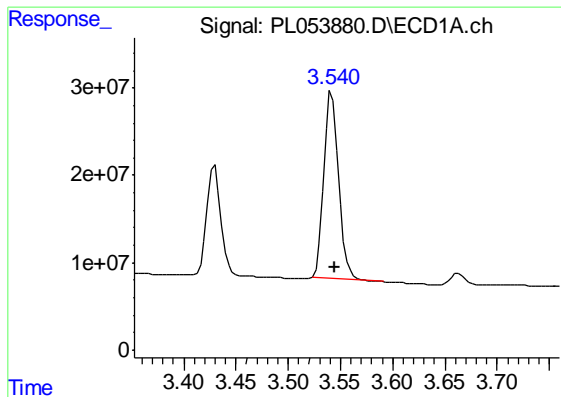
Data Path : Z:\pestpcbsrv\HPCHEM1\ECD_L\Data\PL102919\
 Data File : PL053880.D
 Signal(s) : Signal #1: ECD1A.ch Signal #2: ECD2B.ch
 Acq On : 29 Oct 2019 17:43
 Operator : SG\AJ
 Sample : PB124393BS
 Misc :
 ALS Vial : 20 Sample Multiplier: 1

Instrument :
 ECD_L
 ClientSampleId :
 PB124393BS

Integration File signal 1: autoint1.e
 Integration File signal 2: autoint2.e
 Quant Time: Oct 30 07:17:23 2019
 Quant Method : Z:\pestpcbsrv\HPCHEM1\ECD_L\methods\PL101919.M
 Quant Title : GC Extractables
 QLast Update : Fri Oct 18 13:56:08 2019
 Response via : Initial Calibration
 Integrator: ChemStation

Volume Inj. : 1 µl
 Signal #1 Phase : ZB-MR2 Signal #2 Phase: ZB-MR1
 Signal #1 Info : 30M x 0.32mm x0.2 Signal #2 Info : 30M x 0.32mm x0.5µm

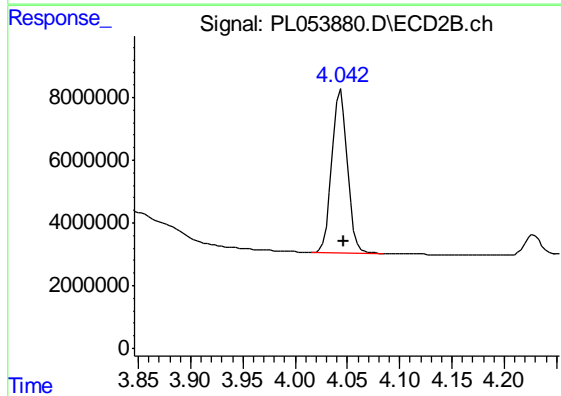




#1 Tetrachloro-m-xylene

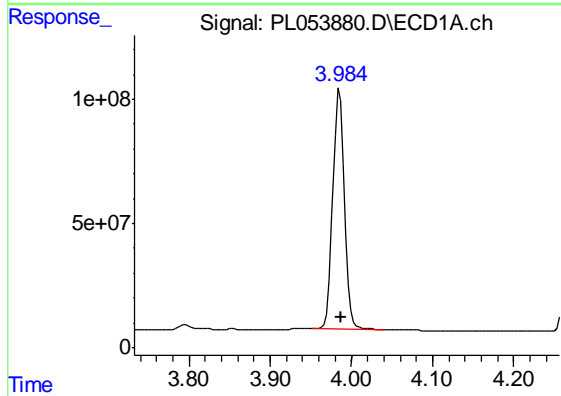
R.T.: 3.542 min
 Delta R.T.: -0.002 min
 Response: 211433988
 Conc: 19.51 ng/ml

Instrument :
 ECD_L
 ClientSampleId :
 PB124393BS



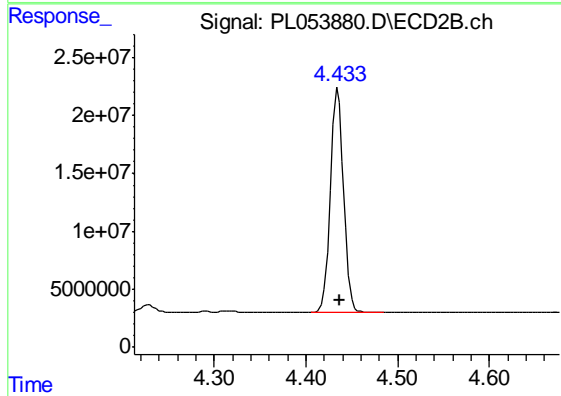
#1 Tetrachloro-m-xylene

R.T.: 4.044 min
 Delta R.T.: -0.002 min
 Response: 53858859
 Conc: 21.52 ng/ml



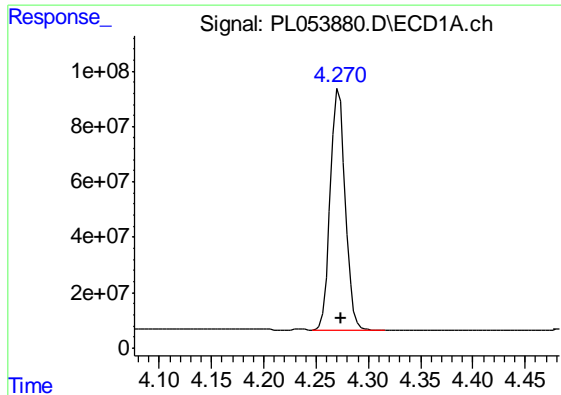
#2 alpha-BHC

R.T.: 3.985 min
 Delta R.T.: -0.003 min
 Response: 950575572
 Conc: 54.52 ng/ml



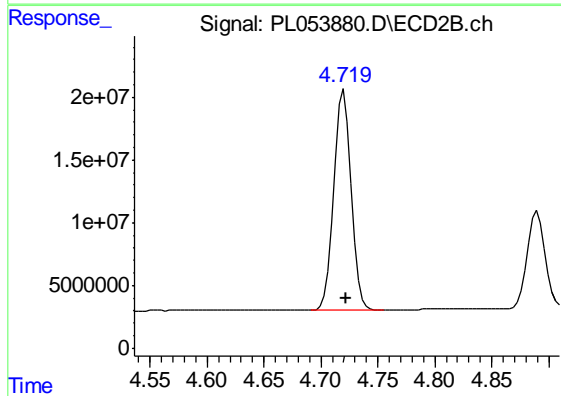
#2 alpha-BHC

R.T.: 4.435 min
 Delta R.T.: -0.002 min
 Response: 195361896
 Conc: 56.51 ng/ml

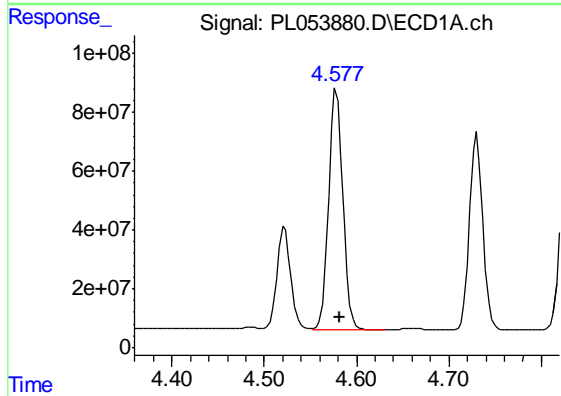


#3 gamma-BHC (Lindane)
 R.T.: 4.272 min
 Delta R.T.: -0.003 min
 Response: 863582402
 Conc: 55.45 ng/ml

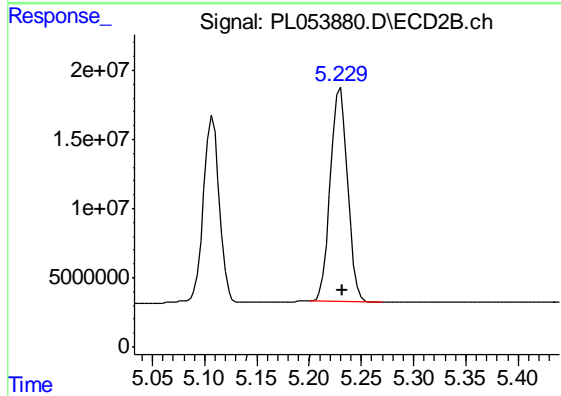
Instrument :
 ECD_L
 ClientSampleId :
 PB124393BS



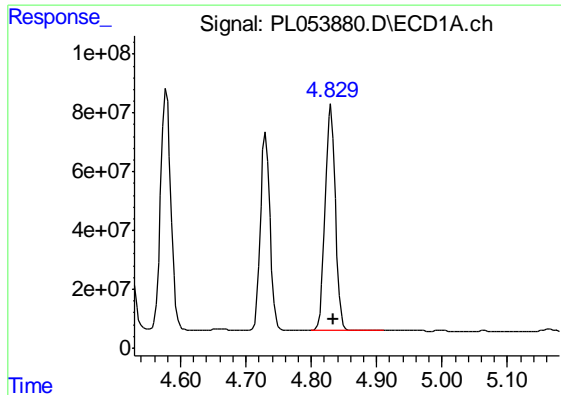
#3 gamma-BHC (Lindane)
 R.T.: 4.720 min
 Delta R.T.: -0.002 min
 Response: 183559620
 Conc: 57.00 ng/ml



#4 Heptachlor
 R.T.: 4.578 min
 Delta R.T.: -0.004 min
 Response: 875756664
 Conc: 55.49 ng/ml



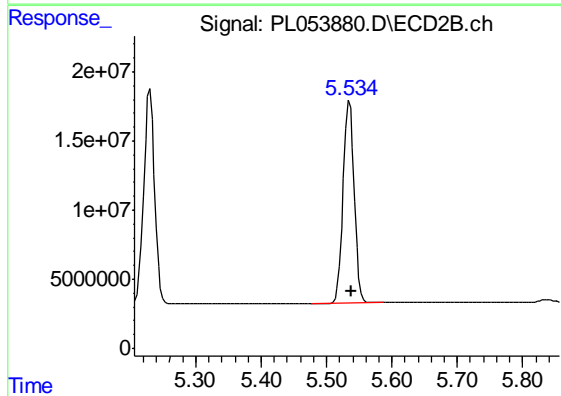
#4 Heptachlor
 R.T.: 5.230 min
 Delta R.T.: -0.002 min
 Response: 177763357
 Conc: 55.17 ng/ml



#5 Aldrin

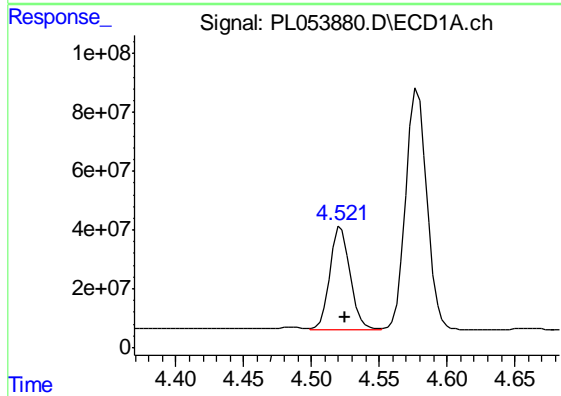
R.T.: 4.830 min
 Delta R.T.: -0.004 min
 Response: 836364438
 Conc: 58.50 ng/ml

Instrument :
 ECD_L
 ClientSampled :
 PB124393BS



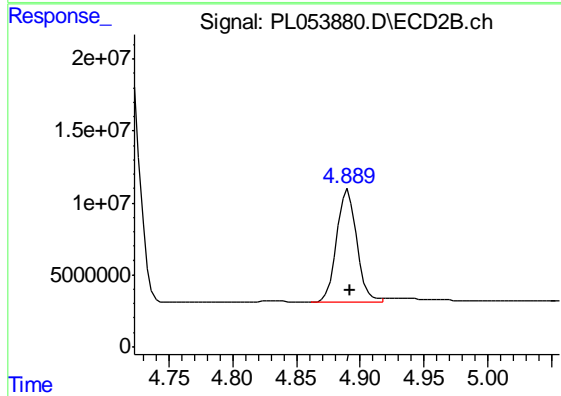
#5 Aldrin

R.T.: 5.535 min
 Delta R.T.: -0.002 min
 Response: 171758996
 Conc: 57.61 ng/ml



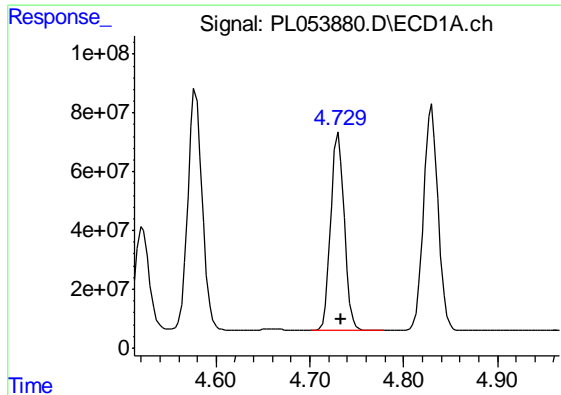
#6 beta-BHC

R.T.: 4.522 min
 Delta R.T.: -0.002 min
 Response: 356529734
 Conc: 54.10 ng/ml



#6 beta-BHC

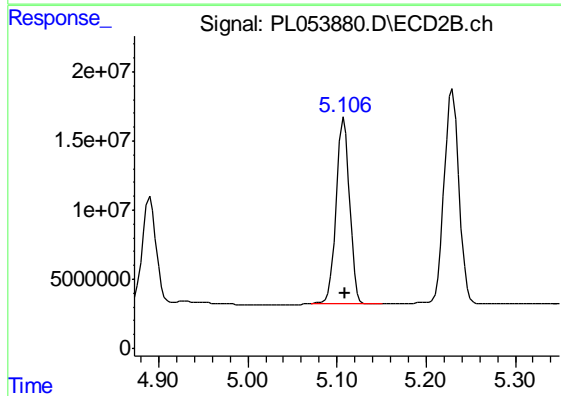
R.T.: 4.891 min
 Delta R.T.: -0.001 min
 Response: 85198238
 Conc: 55.16 ng/ml



#7 delta-BHC

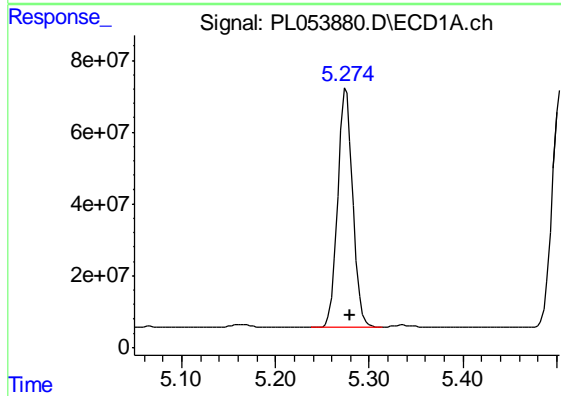
R.T.: 4.731 min
Delta R.T.: -0.003 min
Response: 671825294
Conc: 44.14 ng/ml

Instrument :
ECD_L
ClientSampleId :
PB124393BS



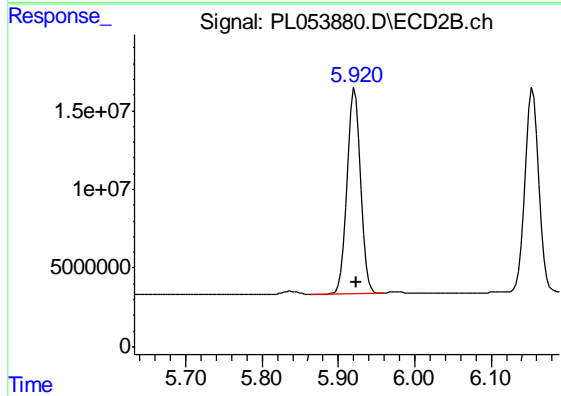
#7 delta-BHC

R.T.: 5.108 min
Delta R.T.: -0.001 min
Response: 141312197
Conc: 46.78 ng/ml



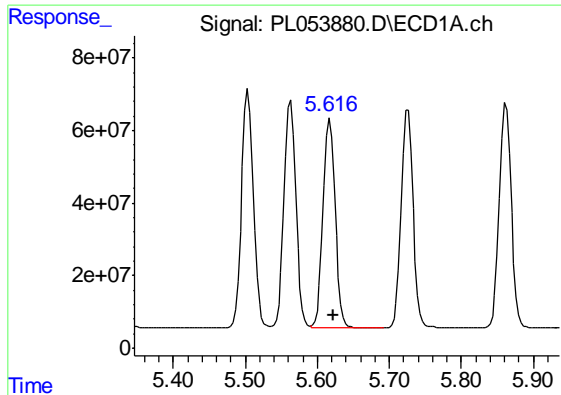
#8 Heptachlor epoxide

R.T.: 5.276 min
Delta R.T.: -0.005 min
Response: 746394043
Conc: 55.29 ng/ml



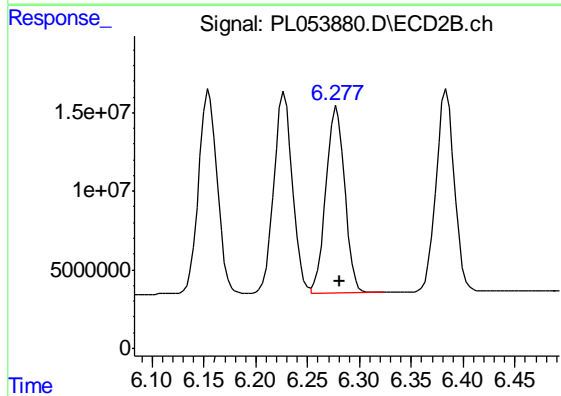
#8 Heptachlor epoxide

R.T.: 5.922 min
Delta R.T.: -0.003 min
Response: 159340382
Conc: 54.64 ng/ml

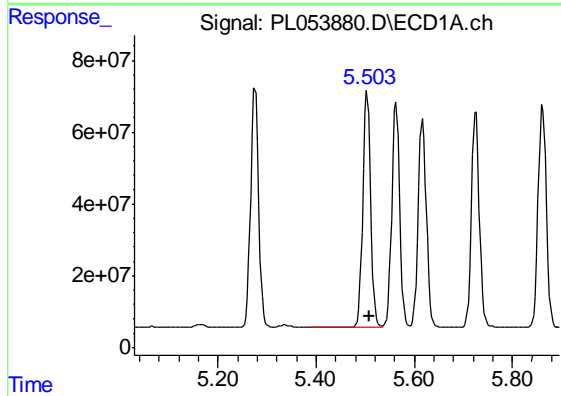


#9 Endosulfan I
 R.T.: 5.618 min
 Delta R.T.: -0.005 min
 Response: 671600971
 Conc: 54.64 ng/ml

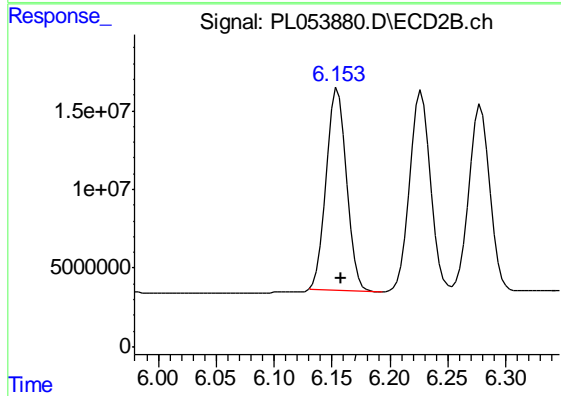
Instrument :
 ECD_L
 ClientSampleId :
 PB124393BS



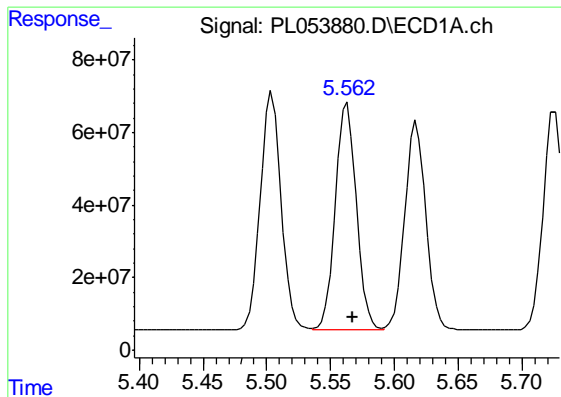
#9 Endosulfan I
 R.T.: 6.278 min
 Delta R.T.: -0.003 min
 Response: 149173102
 Conc: 55.02 ng/ml



#10 gamma-Chlordane
 R.T.: 5.504 min
 Delta R.T.: -0.005 min
 Response: 741176971
 Conc: 54.32 ng/ml



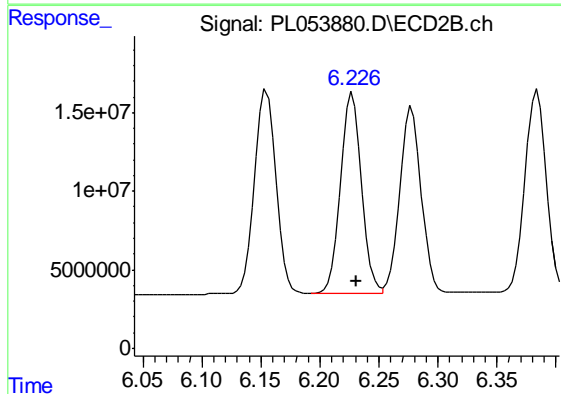
#10 gamma-Chlordane
 R.T.: 6.155 min
 Delta R.T.: -0.003 min
 Response: 157038599
 Conc: 53.82 ng/ml



#11 alpha-Chlordane

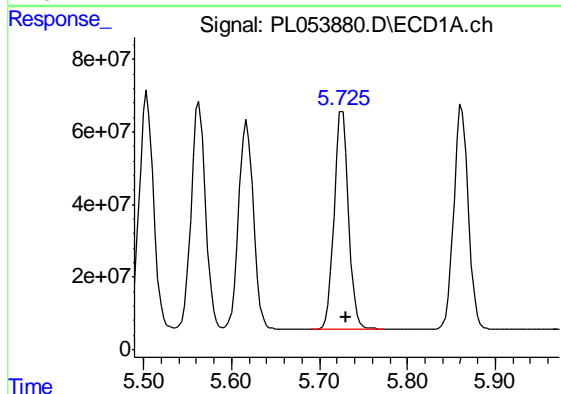
R.T.: 5.563 min
 Delta R.T.: -0.004 min
 Response: 713312905
 Conc: 53.62 ng/ml

Instrument :
 ECD_L
 ClientSampleId :
 PB124393BS



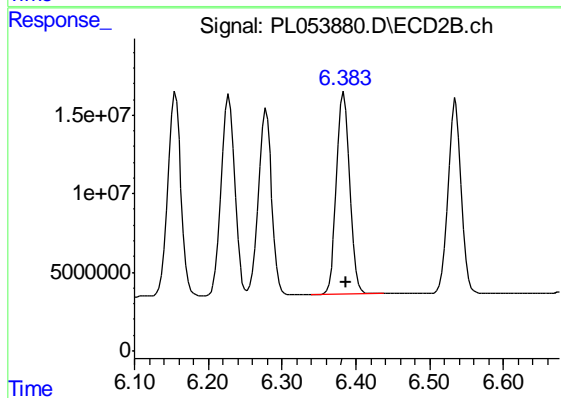
#11 alpha-Chlordane

R.T.: 6.228 min
 Delta R.T.: -0.003 min
 Response: 159605623
 Conc: 54.67 ng/ml



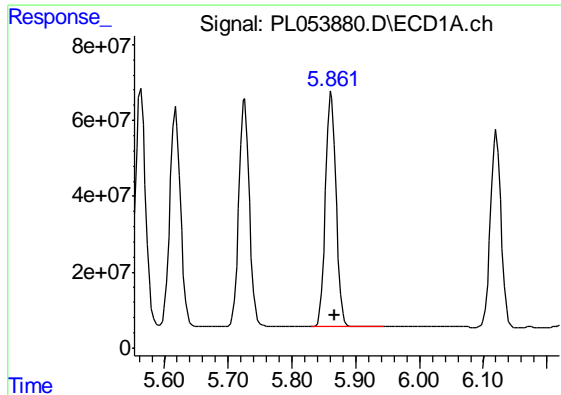
#12 4,4'-DDE

R.T.: 5.726 min
 Delta R.T.: -0.005 min
 Response: 682281427
 Conc: 57.42 ng/ml



#12 4,4'-DDE

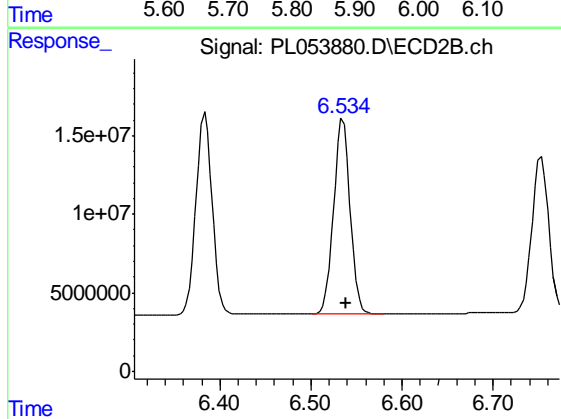
R.T.: 6.384 min
 Delta R.T.: -0.003 min
 Response: 158603268
 Conc: 56.32 ng/ml



#13 Dieldrin

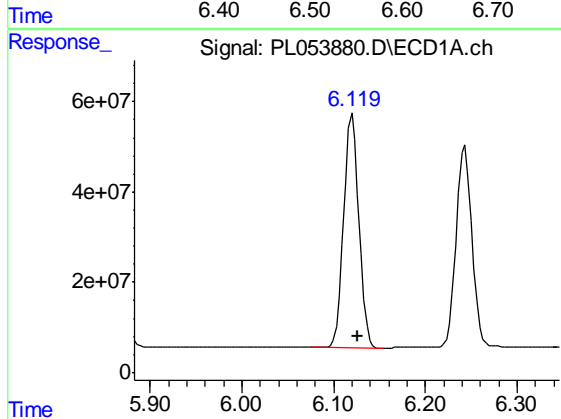
R.T.: 5.862 min
 Delta R.T.: -0.006 min
 Response: 709990502
 Conc: 54.47 ng/ml

Instrument :
 ECD_L
 ClientSampleId :
 PB124393BS



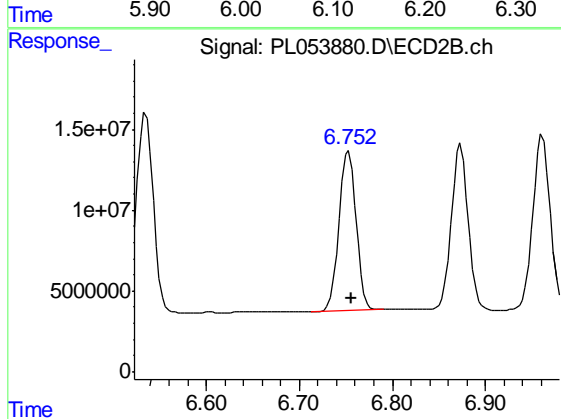
#13 Dieldrin

R.T.: 6.535 min
 Delta R.T.: -0.003 min
 Response: 157023595
 Conc: 55.03 ng/ml



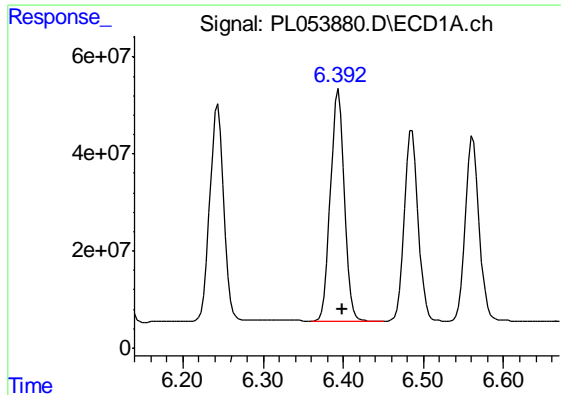
#14 Endrin

R.T.: 6.120 min
 Delta R.T.: -0.006 min
 Response: 597746407
 Conc: 51.57 ng/ml



#14 Endrin

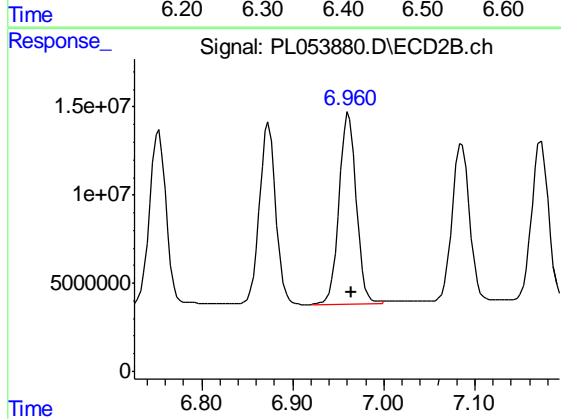
R.T.: 6.753 min
 Delta R.T.: -0.003 min
 Response: 125740999
 Conc: 51.80 ng/ml



#15 Endosulfan II

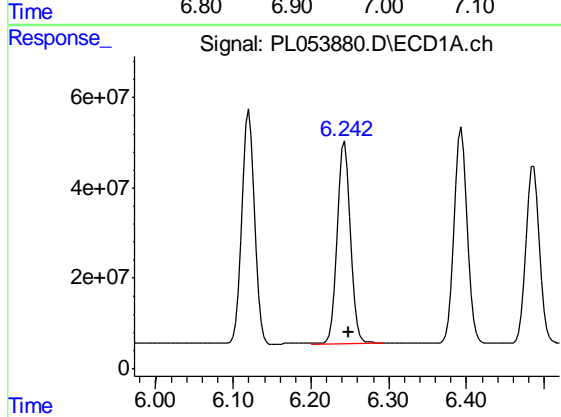
R.T.: 6.394 min
Delta R.T.: -0.005 min
Response: 569279081
Conc: 50.92 ng/ml

Instrument :
ECD_L
ClientSampleId :
PB124393BS



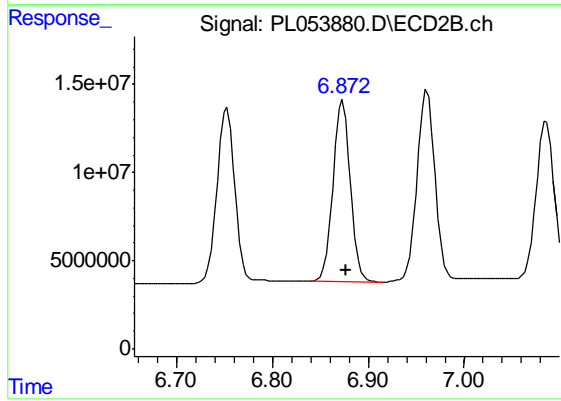
#15 Endosulfan II

R.T.: 6.962 min
Delta R.T.: -0.003 min
Response: 141604983
Conc: 55.43 ng/ml



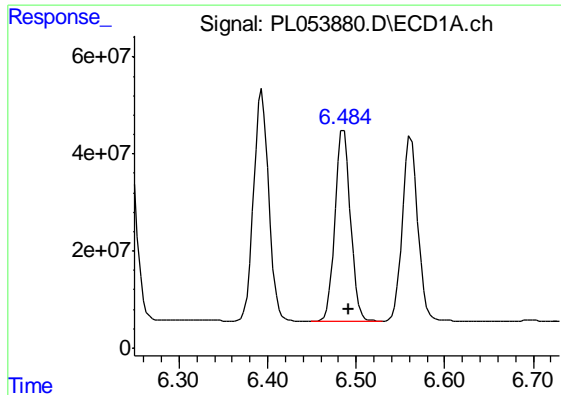
#16 4,4'-DDD

R.T.: 6.243 min
Delta R.T.: -0.005 min
Response: 533732599
Conc: 59.97 ng/ml



#16 4,4'-DDD

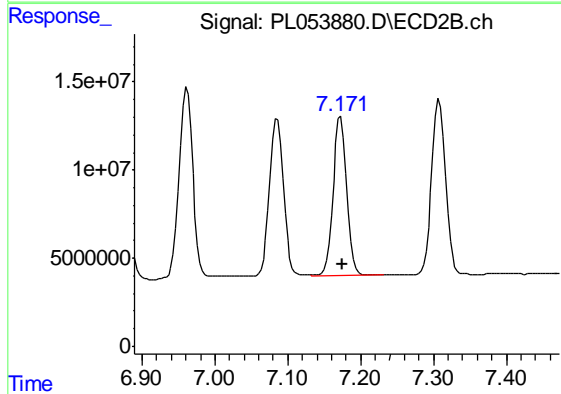
R.T.: 6.874 min
Delta R.T.: -0.003 min
Response: 128794345
Conc: 61.80 ng/ml



#17 4,4'-DDT

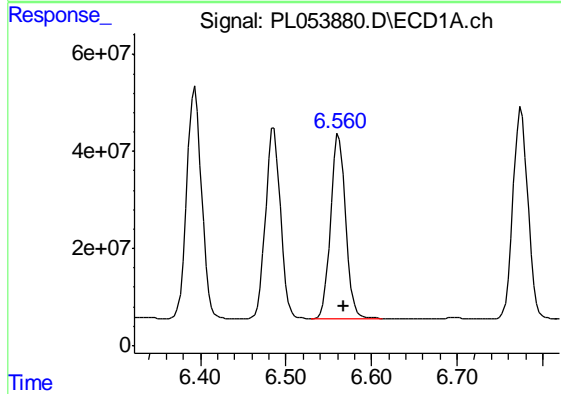
R.T.: 6.486 min
 Delta R.T.: -0.005 min
 Response: 481258336
 Conc: 48.58 ng/ml

Instrument :
 ECD_L
 ClientSampled :
 PB124393BS



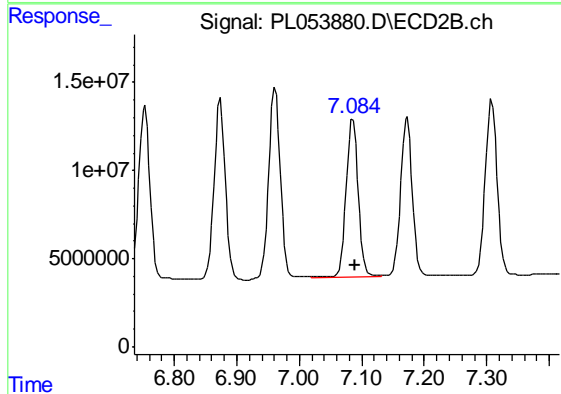
#17 4,4'-DDT

R.T.: 7.173 min
 Delta R.T.: -0.003 min
 Response: 117447249
 Conc: 50.79 ng/ml



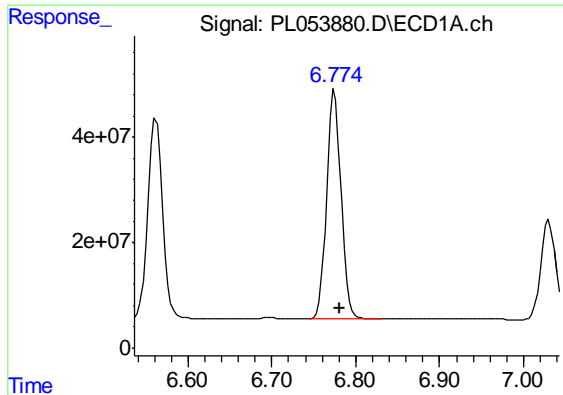
#18 Endrin aldehyde

R.T.: 6.562 min
 Delta R.T.: -0.005 min
 Response: 462068139
 Conc: 50.39 ng/ml



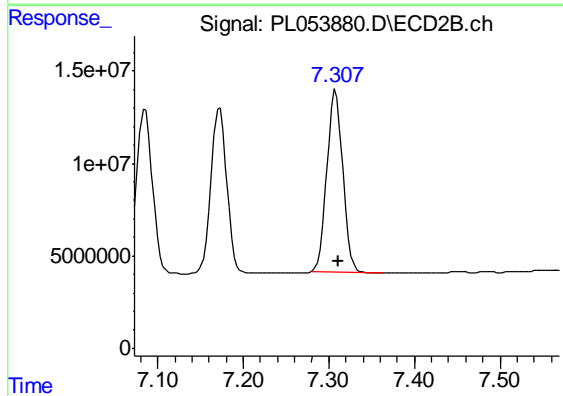
#18 Endrin aldehyde

R.T.: 7.086 min
 Delta R.T.: -0.003 min
 Response: 122069647
 Conc: 55.57 ng/ml

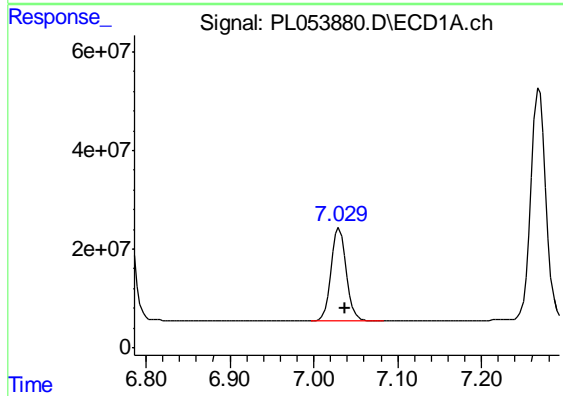


#19 Endosulfan Sulfate
 R.T.: 6.775 min
 Delta R.T.: -0.006 min
 Response: 524454954
 Conc: 51.56 ng/ml

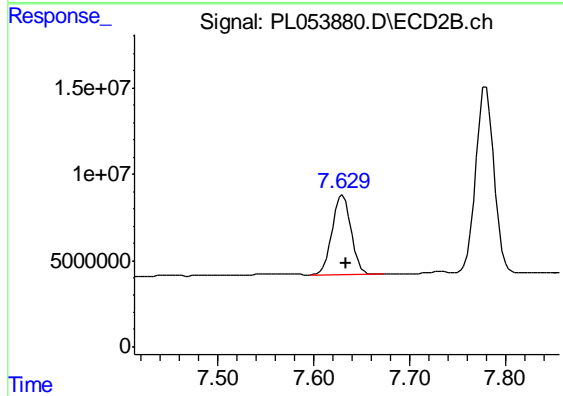
Instrument :
 ECD_L
 ClientSampleId :
 PB124393BS



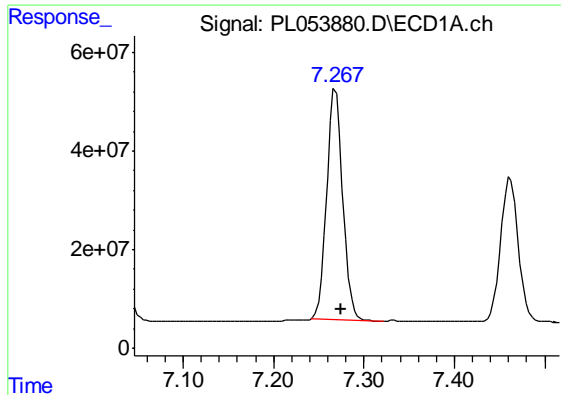
#19 Endosulfan Sulfate
 R.T.: 7.308 min
 Delta R.T.: -0.003 min
 Response: 128971983
 Conc: 52.56 ng/ml



#20 Methoxychlor
 R.T.: 7.030 min
 Delta R.T.: -0.007 min
 Response: 237163650
 Conc: 48.10 ng/ml

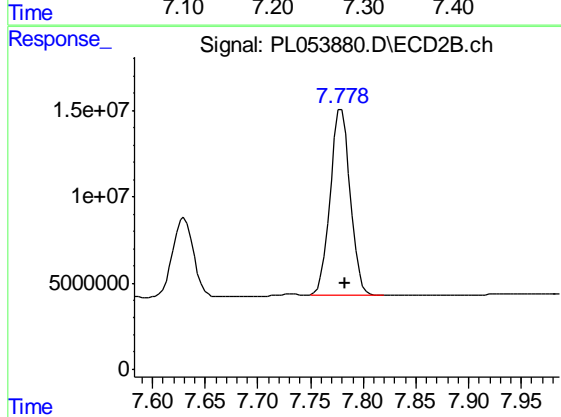


#20 Methoxychlor
 R.T.: 7.630 min
 Delta R.T.: -0.003 min
 Response: 62950784
 Conc: 48.46 ng/ml

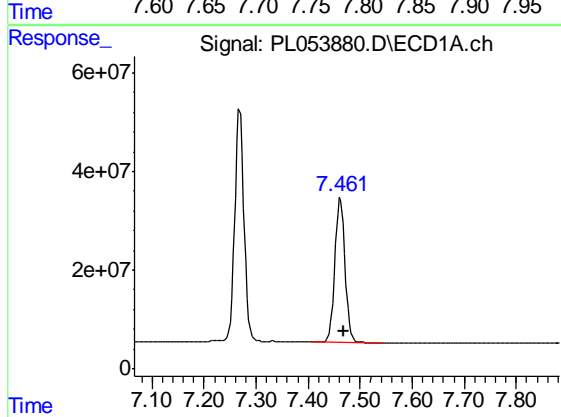


#21 Endrin ketone
R.T.: 7.269 min
Delta R.T.: -0.006 min
Response: 578990810
Conc: 53.78 ng/ml

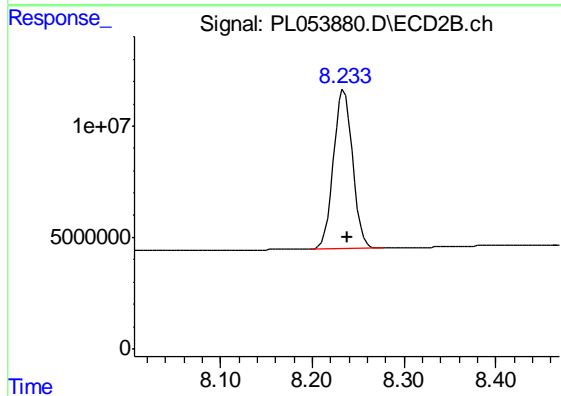
Instrument :
ECD_L
ClientSampleId :
PB124393BS



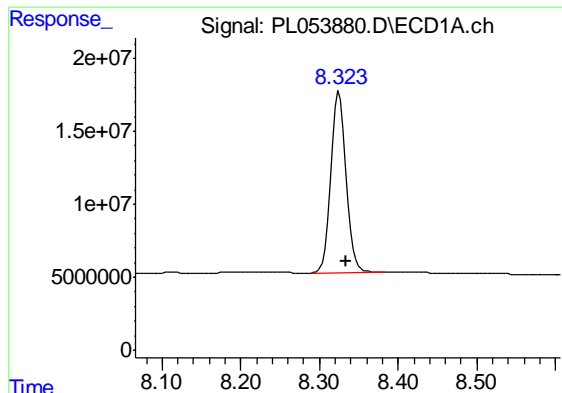
#21 Endrin ketone
R.T.: 7.779 min
Delta R.T.: -0.004 min
Response: 141576084
Conc: 54.91 ng/ml



#22 Mirex
R.T.: 7.462 min
Delta R.T.: -0.007 min
Response: 399442142
Conc: 46.70 ng/ml



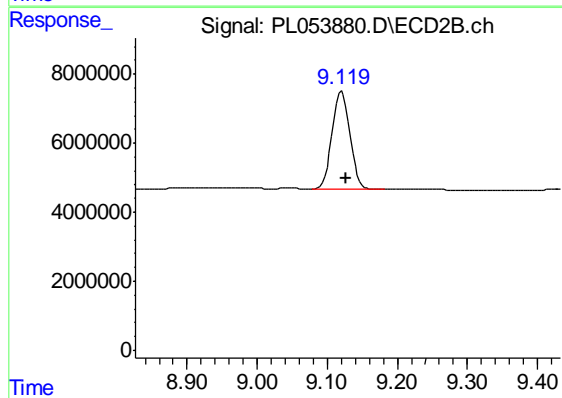
#22 Mirex
R.T.: 8.235 min
Delta R.T.: -0.004 min
Response: 103116763
Conc: 50.97 ng/ml



#28 Decachlorobiphenyl

R.T.: 8.325 min
Delta R.T.: -0.009 min
Response: 169736256
Conc: 17.30 ng/ml

Instrument :
ECD_L
ClientSampleId :
PB124393BS



#28 Decachlorobiphenyl

R.T.: 9.120 min
Delta R.T.: -0.006 min
Response: 50361918
Conc: 17.88 ng/ml