

Data Path : Z:\pestpcbsrv\HPCHEM1\ECD\_L\Data\PL102919\  
 Data File : PL053890.D  
 Signal(s) : Signal #1: ECD1A.ch Signal #2: ECD2B.ch  
 Acq On : 29 Oct 2019 20:03  
 Operator : SG\AJ  
 Sample : K5576-03  
 Misc :  
 ALS Vial : 30 Sample Multiplier: 1

Instrument :  
 ECD\_L  
 ClientSampleId :  
 CSA-2-1-4

Integration File signal 1: autoint1.e  
 Integration File signal 2: autoint2.e  
 Quant Time: Oct 30 07:20:11 2019  
 Quant Method : Z:\pestpcbsrv\HPCHEM1\ECD\_L\methods\PL101919.M  
 Quant Title : GC Extractables  
 QLast Update : Fri Oct 18 13:56:08 2019  
 Response via : Initial Calibration  
 Integrator: ChemStation

Volume Inj. : 1 µl  
 Signal #1 Phase : ZB-MR2 Signal #2 Phase: ZB-MR1  
 Signal #1 Info : 30M x 0.32mm x0.2 Signal #2 Info : 30M x 0.32mm x0.5µm

Compound	RT#1	RT#2	Resp#1	Resp#2	ng/ml	ng/ml
-----						
System Monitoring Compounds						
1) SA Tetrachlo...	3.542	4.045	195.9E6	46524935	18.072	18.592
28) SA Decachlor...	8.325	9.122	179.7E6	55590601	18.316	19.741

Target Compounds

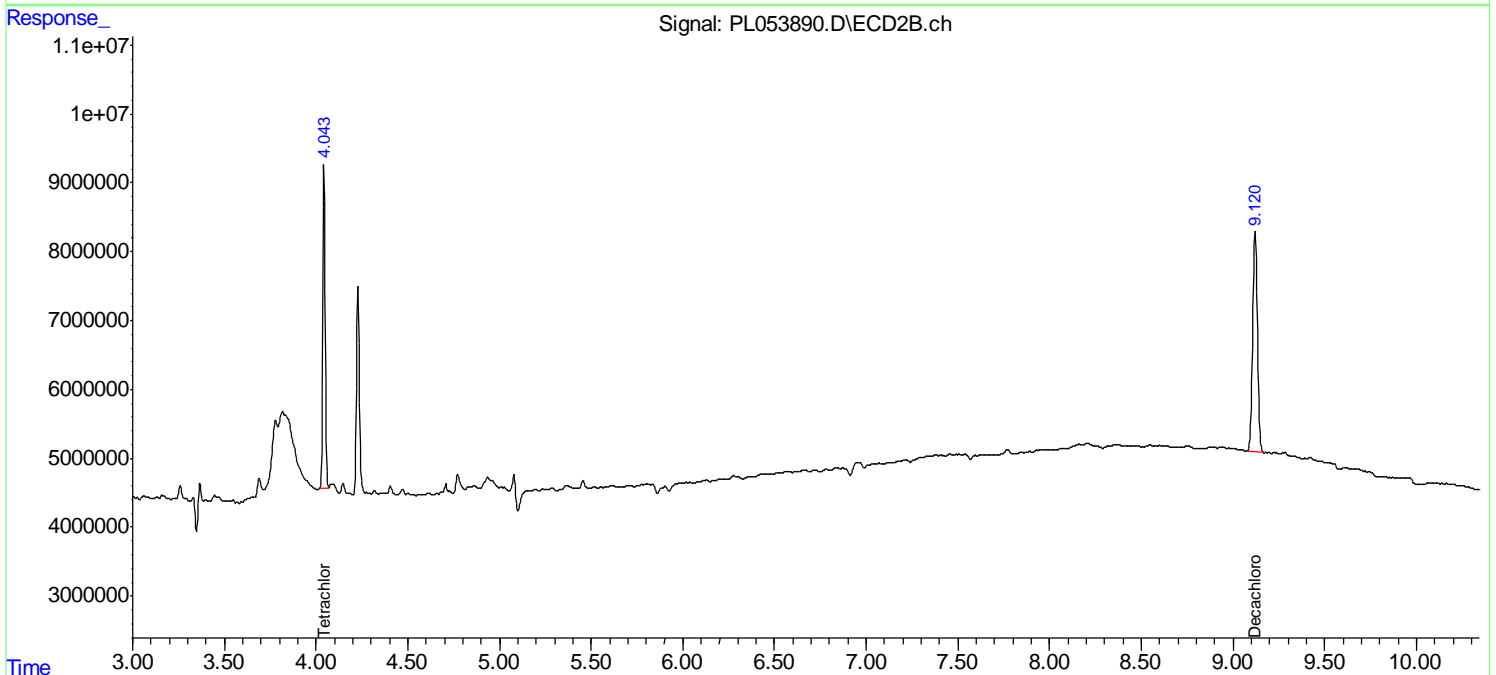
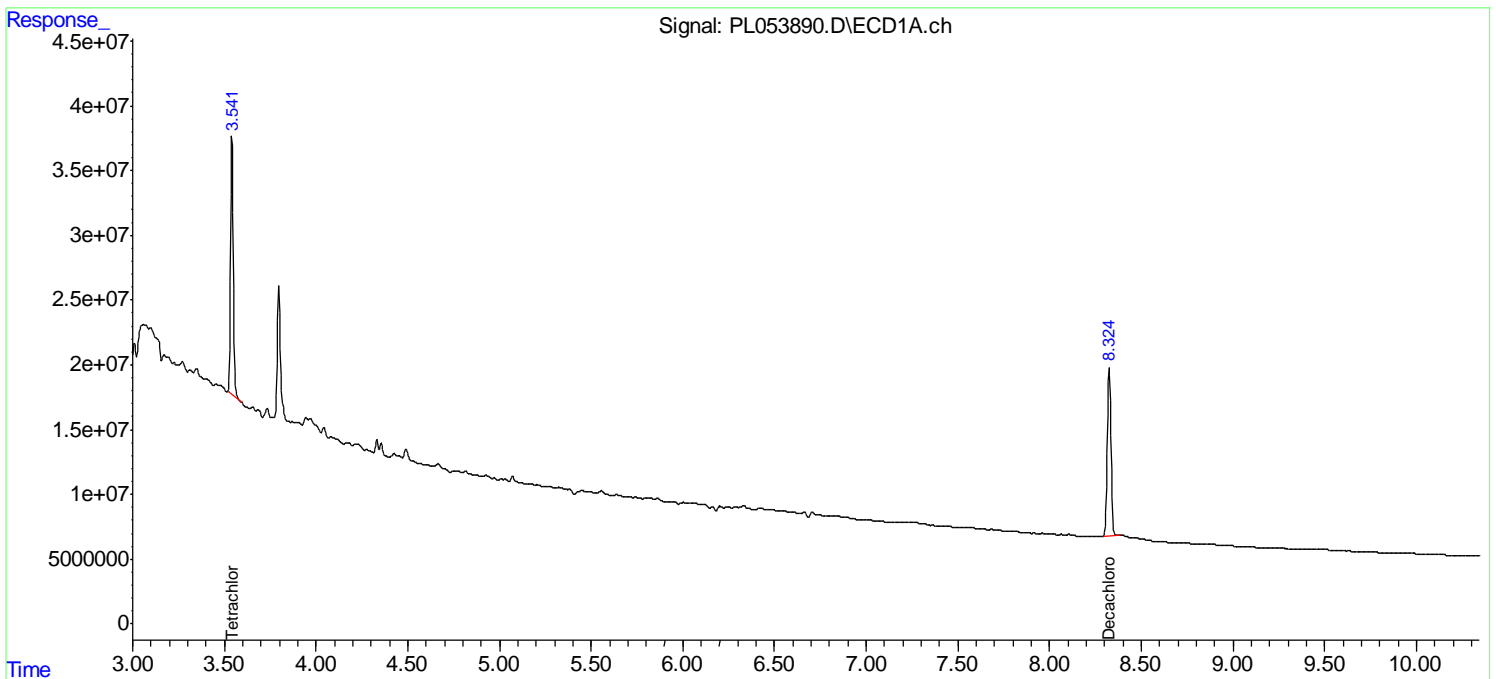
(f)=RT Delta > 1/2 Window (#)=Amounts differ by > 25% (m)=manual int.

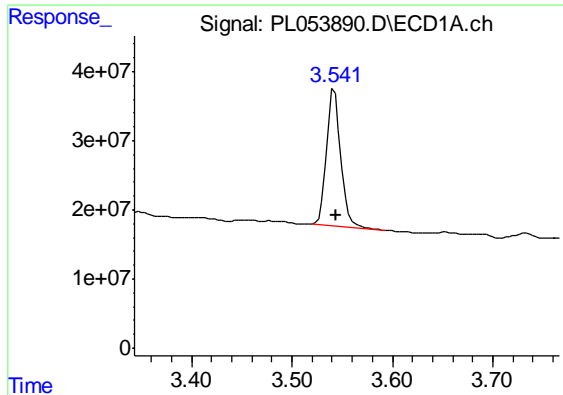
Data Path : Z:\pestpcbsrv\HPCHEM1\ECD\_L\Data\PL102919\  
 Data File : PL053890.D  
 Signal(s) : Signal #1: ECD1A.ch Signal #2: ECD2B.ch  
 Acq On : 29 Oct 2019 20:03  
 Operator : SG\AJ  
 Sample : K5576-03  
 Misc :  
 ALS Vial : 30 Sample Multiplier: 1

**Instrument :**  
 ECD\_L  
**Client Sampled :**  
 CSA-2-1-4

Integration File signal 1: autoint1.e  
 Integration File signal 2: autoint2.e  
 Quant Time: Oct 30 07:20:11 2019  
 Quant Method : Z:\pestpcbsrv\HPCHEM1\ECD\_L\methods\PL101919.M  
 Quant Title : GC Extractables  
 QLast Update : Fri Oct 18 13:56:08 2019  
 Response via : Initial Calibration  
 Integrator: ChemStation

Volume Inj. : 1 µl  
 Signal #1 Phase : ZB-MR2 Signal #2 Phase: ZB-MR1  
 Signal #1 Info : 30M x 0.32mm x0.2 Signal #2 Info : 30M x 0.32mm x0.5µm

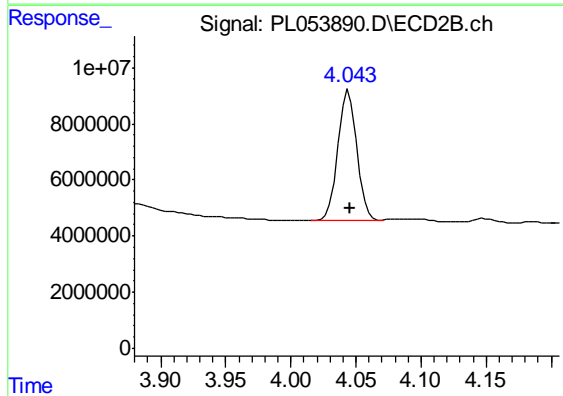




#1 Tetrachloro-m-xylene

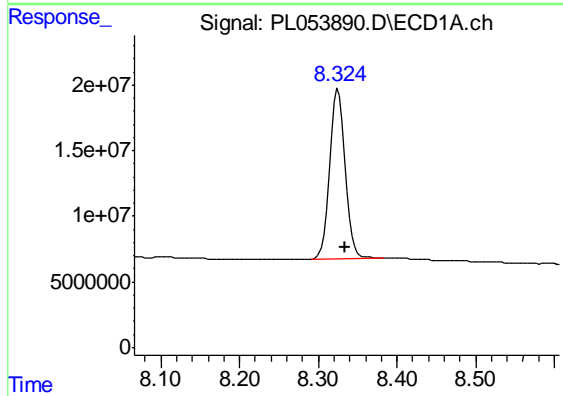
R.T.: 3.542 min  
Delta R.T.: -0.002 min  
Response: 195890097  
Conc: 18.07 ng/ml

Instrument :  
ECD\_L  
ClientSampleId :  
CSA-2-1-4



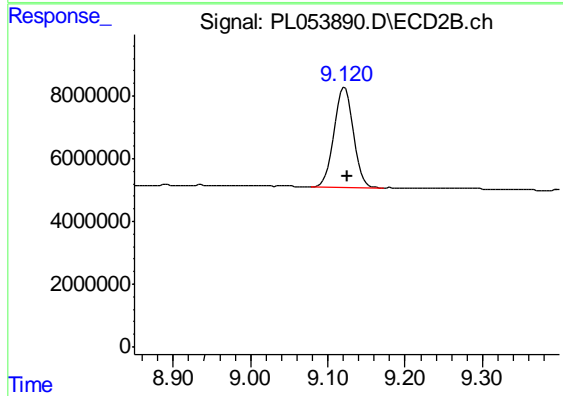
#1 Tetrachloro-m-xylene

R.T.: 4.045 min  
Delta R.T.: -0.001 min  
Response: 46524935  
Conc: 18.59 ng/ml



#28 Decachlorobiphenyl

R.T.: 8.325 min  
Delta R.T.: -0.009 min  
Response: 179708597  
Conc: 18.32 ng/ml



#28 Decachlorobiphenyl

R.T.: 9.122 min  
Delta R.T.: -0.004 min  
Response: 55590601  
Conc: 19.74 ng/ml