

Data Path : Z:\pestpcbsrv\HPCHEM1\ECD\_L\Data\PL102919\  
 Data File : PL053892.D  
 Signal(s) : Signal #1: ECD1A.ch Signal #2: ECD2B.ch  
 Acq On : 29 Oct 2019 20:31  
 Operator : SG\AJ  
 Sample : K5576-07  
 Misc :  
 ALS Vial : 32 Sample Multiplier: 1

Instrument :  
 ECD\_L  
 ClientSampleID :  
 CSA-2-1-6

Integration File signal 1: autoint1.e  
 Integration File signal 2: autoint2.e  
 Quant Time: Oct 30 07:20:45 2019  
 Quant Method : Z:\pestpcbsrv\HPCHEM1\ECD\_L\methods\PL101919.M  
 Quant Title : GC Extractables  
 QLast Update : Fri Oct 18 13:56:08 2019  
 Response via : Initial Calibration  
 Integrator: ChemStation

Volume Inj. : 1 µl  
 Signal #1 Phase : ZB-MR2 Signal #2 Phase: ZB-MR1  
 Signal #1 Info : 30M x 0.32mm x0.2 Signal #2 Info : 30M x 0.32mm x0.5µm

Compound	RT#1	RT#2	Resp#1	Resp#2	ng/ml	ng/ml
-----						
System Monitoring Compounds						
1) SA Tetrachlo...	3.543	4.045	201.1E6	48277324	18.551	19.293
28) SA Decachlor...	8.326	9.122	167.6E6	50779743	17.084	18.032

Target Compounds

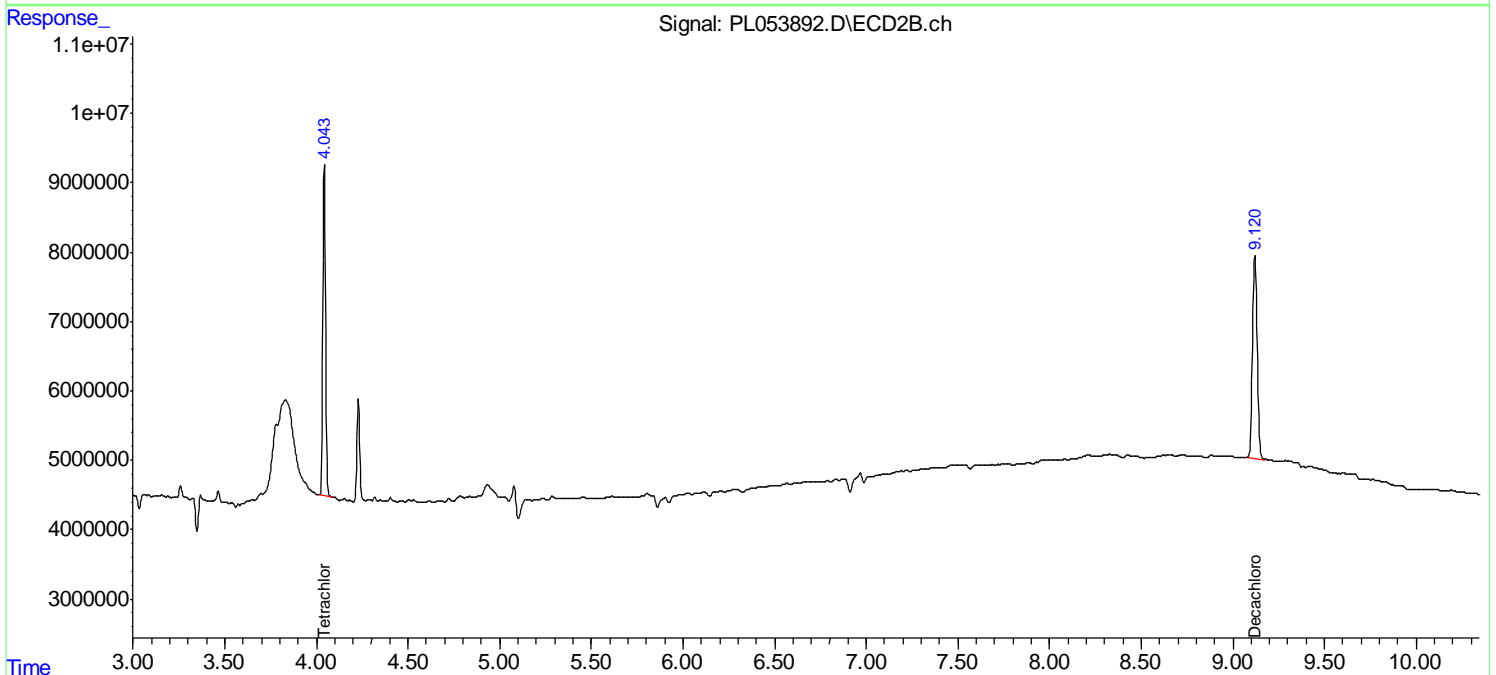
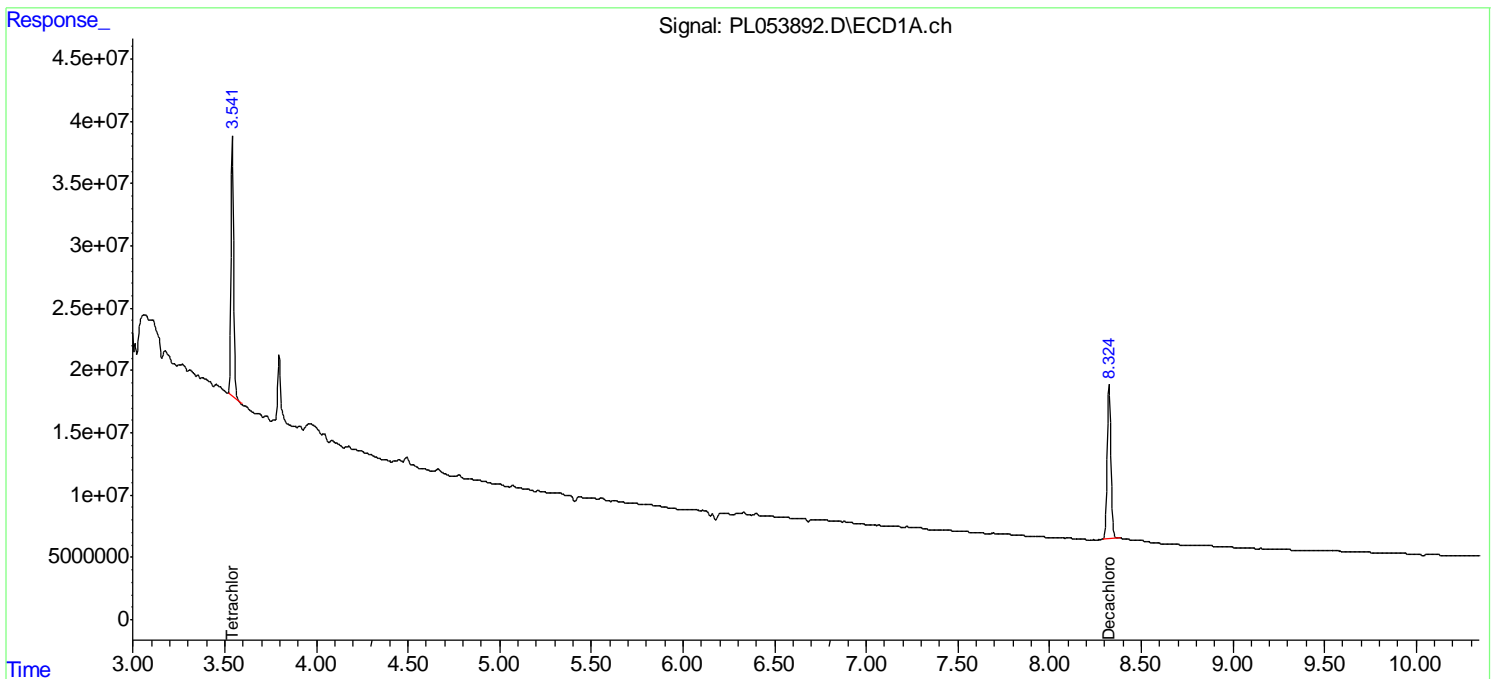
(f)=RT Delta > 1/2 Window (#)=Amounts differ by > 25% (m)=manual int.

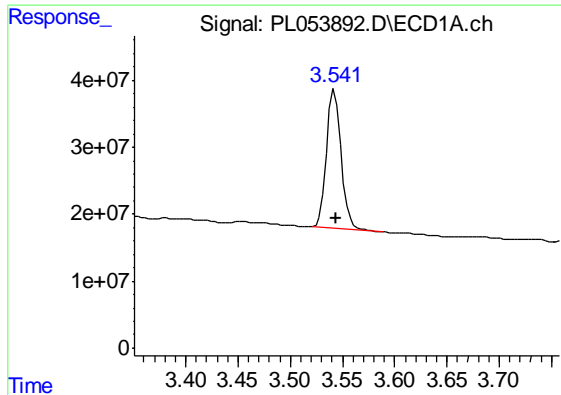
Data Path : Z:\pestpcbsrv\HPCHEM1\ECD\_L\Data\PL102919\  
 Data File : PL053892.D  
 Signal(s) : Signal #1: ECD1A.ch Signal #2: ECD2B.ch  
 Acq On : 29 Oct 2019 20:31  
 Operator : SG\AJ  
 Sample : K5576-07  
 Misc :  
 ALS Vial : 32 Sample Multiplier: 1

**Instrument :**  
 ECD\_L  
**Client Sampled :**  
 CSA-2-1-6

Integration File signal 1: autoint1.e  
 Integration File signal 2: autoint2.e  
 Quant Time: Oct 30 07:20:45 2019  
 Quant Method : Z:\pestpcbsrv\HPCHEM1\ECD\_L\methods\PL101919.M  
 Quant Title : GC Extractables  
 QLast Update : Fri Oct 18 13:56:08 2019  
 Response via : Initial Calibration  
 Integrator: ChemStation

Volume Inj. : 1 µl  
 Signal #1 Phase : ZB-MR2 Signal #2 Phase: ZB-MR1  
 Signal #1 Info : 30M x 0.32mm x0.2 Signal #2 Info : 30M x 0.32mm x0.5µm

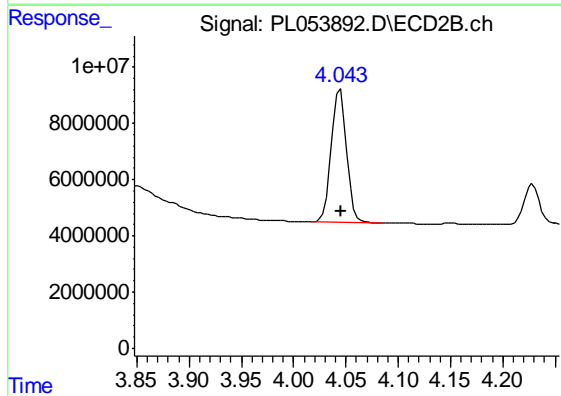




#1 Tetrachloro-m-xylene

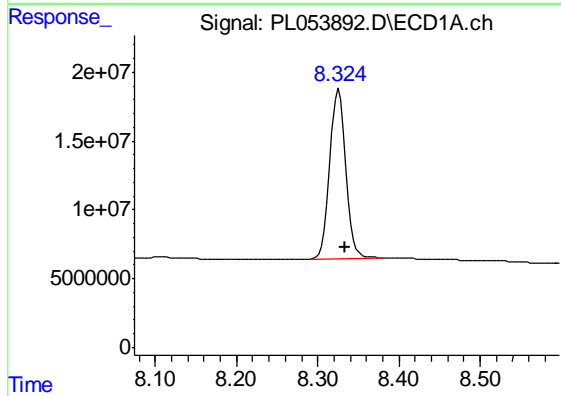
R.T.: 3.543 min  
 Delta R.T.: -0.001 min  
 Response: 201079228  
 Conc: 18.55 ng/ml

Instrument :  
 ECD\_L  
 ClientSampleId :  
 CSA-2-1-6



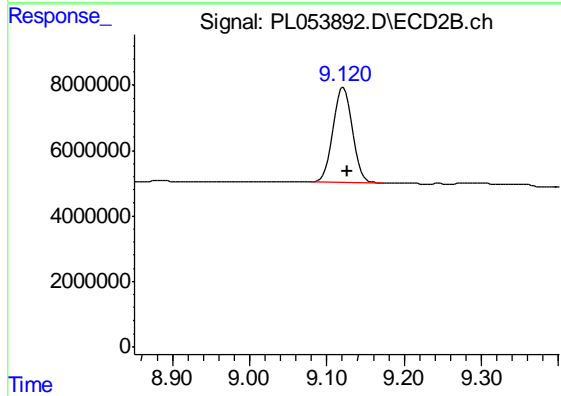
#1 Tetrachloro-m-xylene

R.T.: 4.045 min  
 Delta R.T.: -0.001 min  
 Response: 48277324  
 Conc: 19.29 ng/ml



#28 Decachlorobiphenyl

R.T.: 8.326 min  
 Delta R.T.: -0.008 min  
 Response: 167623899  
 Conc: 17.08 ng/ml



#28 Decachlorobiphenyl

R.T.: 9.122 min  
 Delta R.T.: -0.005 min  
 Response: 50779743  
 Conc: 18.03 ng/ml