

Data Path : Z:\pestpcbsrv\HPCHEM1\ECD\_L\Data\PL102919\  
 Data File : PL053897.D  
 Signal(s) : Signal #1: ECD1A.ch Signal #2: ECD2B.ch  
 Acq On : 29 Oct 2019 21:41  
 Operator : SG\AJ  
 Sample : K5587-03  
 Misc :  
 ALS Vial : 35 Sample Multiplier: 1

Instrument :  
 ECD\_L  
 ClientSampleId :  
 CSA-2-1-9

Integration File signal 1: autoint1.e  
 Integration File signal 2: autoint2.e  
 Quant Time: Oct 30 07:21:56 2019  
 Quant Method : Z:\pestpcbsrv\HPCHEM1\ECD\_L\methods\PL101919.M  
 Quant Title : GC Extractables  
 QLast Update : Fri Oct 18 13:56:08 2019  
 Response via : Initial Calibration  
 Integrator: ChemStation

Volume Inj. : 1 µl  
 Signal #1 Phase : ZB-MR2 Signal #2 Phase: ZB-MR1  
 Signal #1 Info : 30M x 0.32mm x0.2 Signal #2 Info : 30M x 0.32mm x0.5µm

| Compound | RT#1 | RT#2 | Resp#1 | Resp#2 | ng/ml | ng/ml |
|----------|------|------|--------|--------|-------|-------|
|----------|------|------|--------|--------|-------|-------|

-----  
 System Monitoring Compounds

|                     |       |       |         |          |        |        |
|---------------------|-------|-------|---------|----------|--------|--------|
| 1) SA Tetrachlo...  | 3.543 | 4.045 | 210.8E6 | 49976724 | 19.445 | 19.972 |
| 28) SA Decachlor... | 8.326 | 9.121 | 185.6E6 | 57112999 | 18.913 | 20.281 |

Target Compounds  
 -----

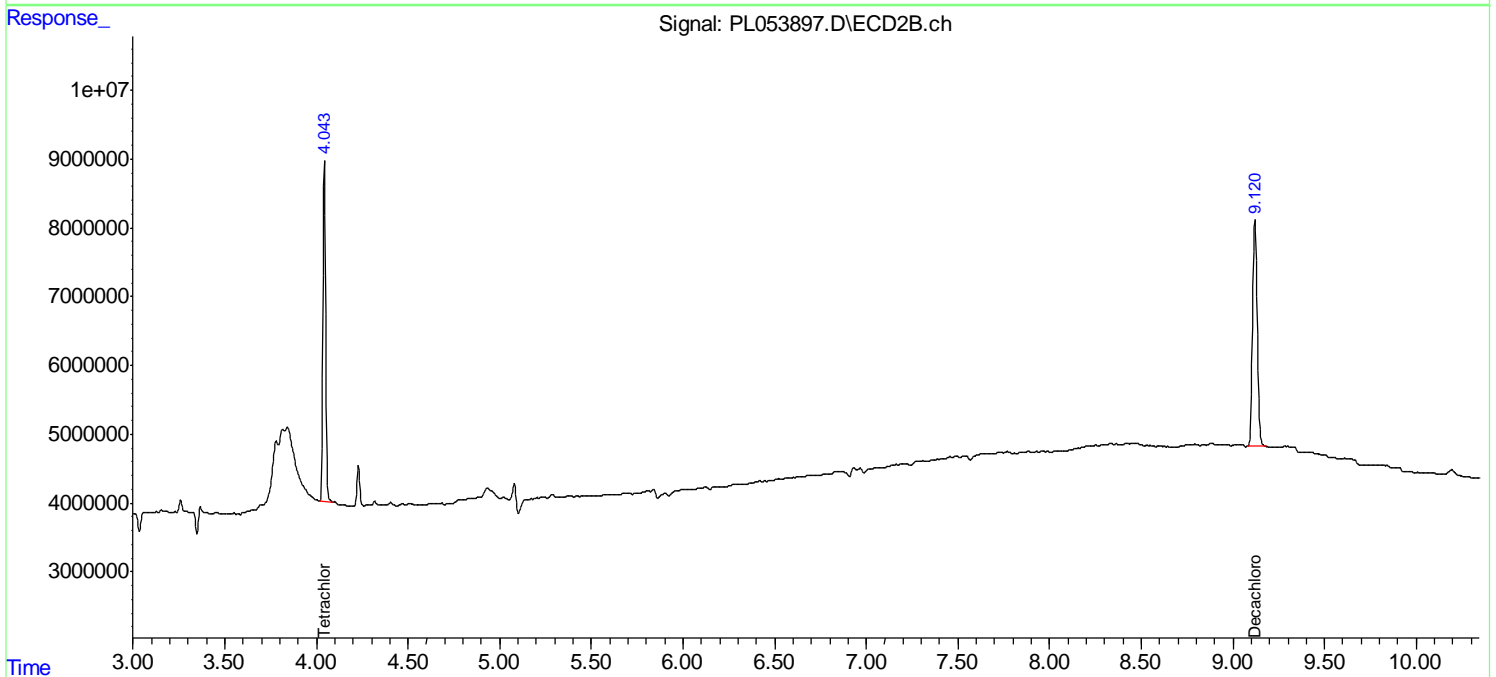
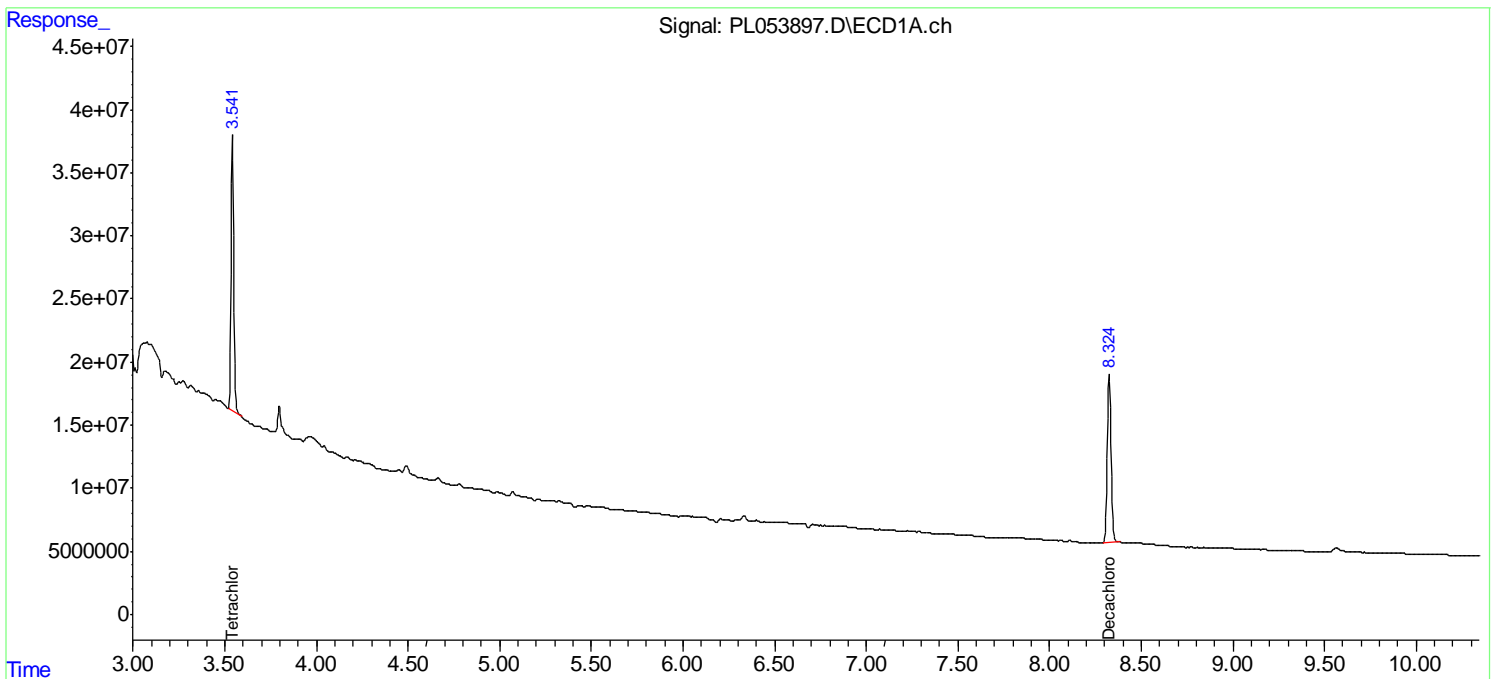
(f)=RT Delta > 1/2 Window (#)=Amounts differ by > 25% (m)=manual int.

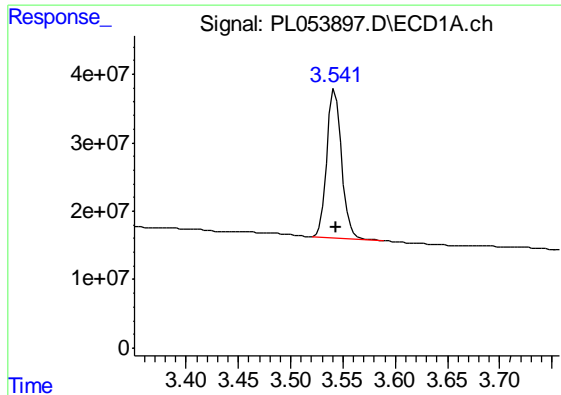
Data Path : Z:\pestpcbsrv\HPCHEM1\ECD\_L\Data\PL102919\  
 Data File : PL053897.D  
 Signal(s) : Signal #1: ECD1A.ch Signal #2: ECD2B.ch  
 Acq On : 29 Oct 2019 21:41  
 Operator : SG\AJ  
 Sample : K5587-03  
 Misc :  
 ALS Vial : 35 Sample Multiplier: 1

**Instrument :**  
 ECD\_L  
**ClientSampled :**  
 CSA-2-1-9

Integration File signal 1: autoint1.e  
 Integration File signal 2: autoint2.e  
 Quant Time: Oct 30 07:21:56 2019  
 Quant Method : Z:\pestpcbsrv\HPCHEM1\ECD\_L\methods\PL101919.M  
 Quant Title : GC Extractables  
 QLast Update : Fri Oct 18 13:56:08 2019  
 Response via : Initial Calibration  
 Integrator: ChemStation

Volume Inj. : 1 µl  
 Signal #1 Phase : ZB-MR2 Signal #2 Phase: ZB-MR1  
 Signal #1 Info : 30M x 0.32mm x0.2 Signal #2 Info : 30M x 0.32mm x0.5µm

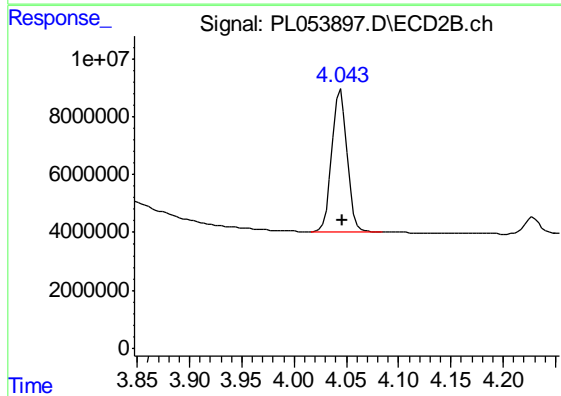




#1 Tetrachloro-m-xylene

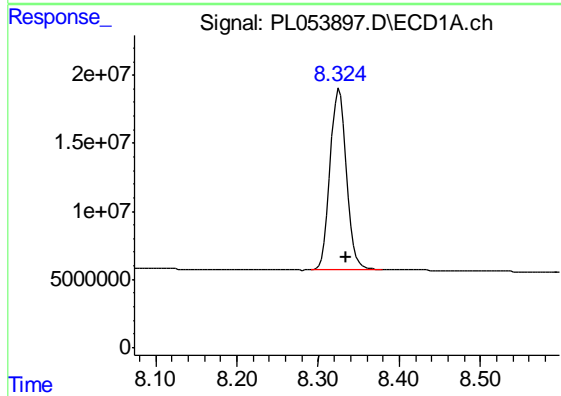
R.T.: 3.543 min  
Delta R.T.: -0.001 min  
Response: 210769143  
Conc: 19.44 ng/ml

Instrument :  
ECD\_L  
ClientSampleId :  
CSA-2-1-9



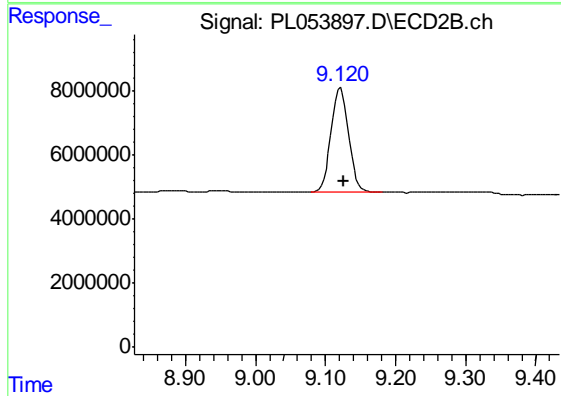
#1 Tetrachloro-m-xylene

R.T.: 4.045 min  
Delta R.T.: -0.001 min  
Response: 49976724  
Conc: 19.97 ng/ml



#28 Decachlorobiphenyl

R.T.: 8.326 min  
Delta R.T.: -0.008 min  
Response: 185566335  
Conc: 18.91 ng/ml



#28 Decachlorobiphenyl

R.T.: 9.121 min  
Delta R.T.: -0.005 min  
Response: 57112999  
Conc: 20.28 ng/ml