

Data Path : Z:\pestpcbsrv\HPCHEM1\ECD_L\Data\PL102919\
 Data File : PL053900.D
 Signal(s) : Signal #1: ECD1A.ch Signal #2: ECD2B.ch
 Acq On : 29 Oct 2019 22:23
 Operator : SG\AJ
 Sample : K5587-12
 Misc :
 ALS Vial : 38 Sample Multiplier: 1

Instrument :
 ECD_L
 ClientSampleId :
 CSA-2-1-12

Integration File signal 1: autoint1.e
 Integration File signal 2: autoint2.e
 Quant Time: Oct 30 07:22:43 2019
 Quant Method : Z:\pestpcbsrv\HPCHEM1\ECD_L\methods\PL101919.M
 Quant Title : GC Extractables
 QLast Update : Fri Oct 18 13:56:08 2019
 Response via : Initial Calibration
 Integrator: ChemStation

Volume Inj. : 1 µl
 Signal #1 Phase : ZB-MR2 Signal #2 Phase: ZB-MR1
 Signal #1 Info : 30M x 0.32mm x0.2 Signal #2 Info : 30M x 0.32mm x0.5µm

Compound	RT#1	RT#2	Resp#1	Resp#2	ng/ml	ng/ml

System Monitoring Compounds						
1) SA Tetrachlo...	3.542	4.044	189.2E6	45664158	17.451	18.248
28) SA Decachlor...	8.325	9.120	178.5E6	55103790	18.197	19.568

Target Compounds

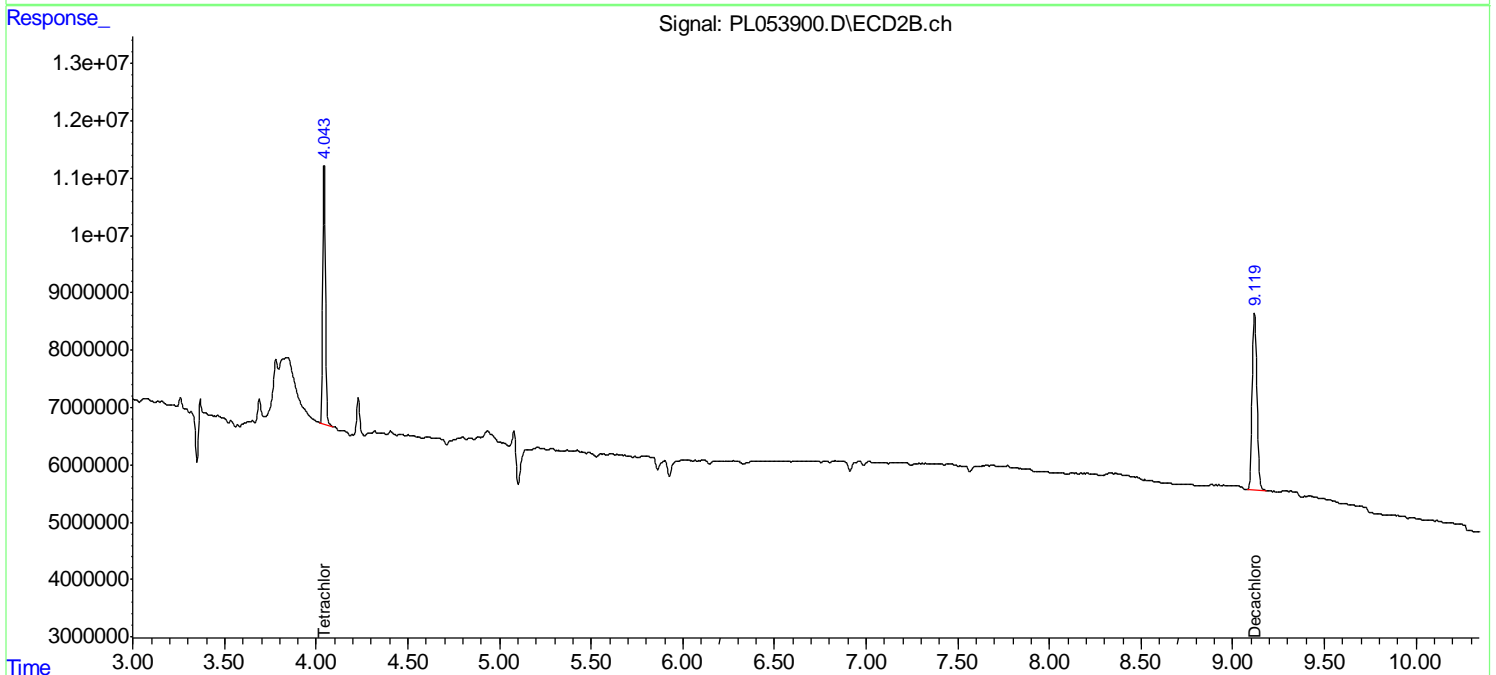
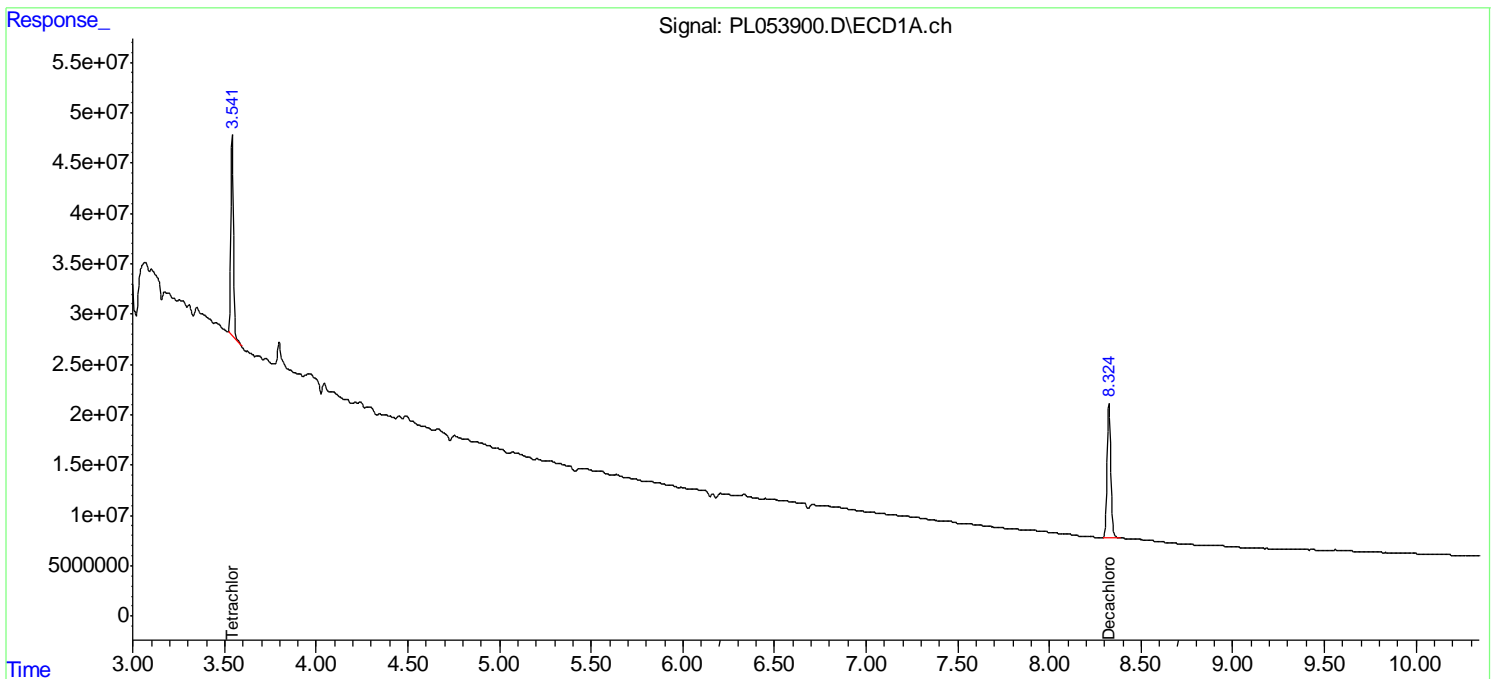
(f)=RT Delta > 1/2 Window (#)=Amounts differ by > 25% (m)=manual int.

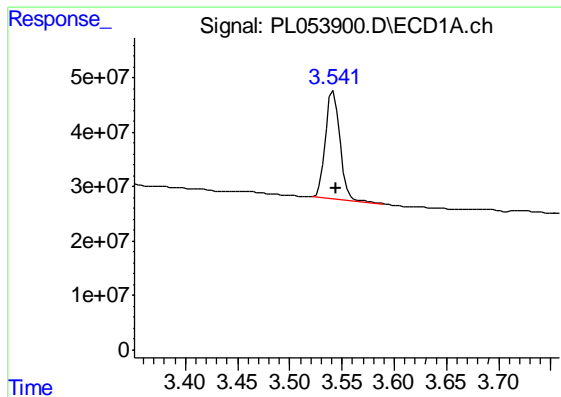
Data Path : Z:\pestpcbsrv\HPCHEM1\ECD_L\Data\PL102919\
 Data File : PL053900.D
 Signal(s) : Signal #1: ECD1A.ch Signal #2: ECD2B.ch
 Acq On : 29 Oct 2019 22:23
 Operator : SG\AJ
 Sample : K5587-12
 Misc :
 ALS Vial : 38 Sample Multiplier: 1

Instrument :
 ECD_L
 ClientSampleID :
 CSA-2-1-12

Integration File signal 1: autoint1.e
 Integration File signal 2: autoint2.e
 Quant Time: Oct 30 07:22:43 2019
 Quant Method : Z:\pestpcbsrv\HPCHEM1\ECD_L\methods\PL101919.M
 Quant Title : GC Extractables
 QLast Update : Fri Oct 18 13:56:08 2019
 Response via : Initial Calibration
 Integrator: ChemStation

Volume Inj. : 1 µl
 Signal #1 Phase : ZB-MR2 Signal #2 Phase: ZB-MR1
 Signal #1 Info : 30M x 0.32mm x0.2 Signal #2 Info : 30M x 0.32mm x0.5µm

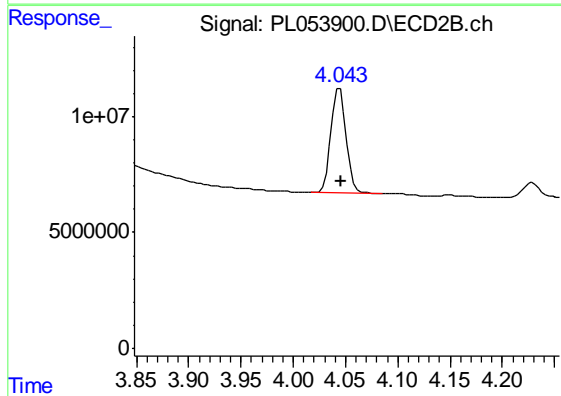




#1 Tetrachloro-m-xylene

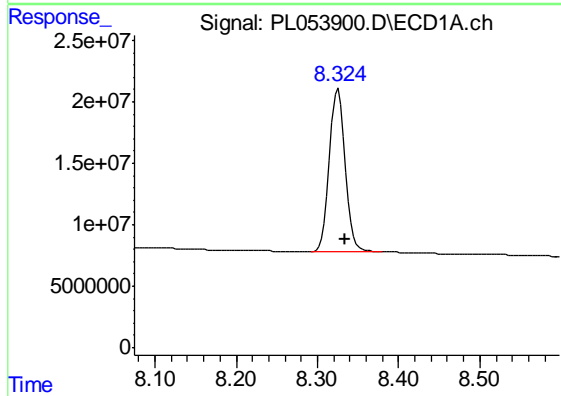
R.T.: 3.542 min
 Delta R.T.: -0.002 min
 Response: 189155067
 Conc: 17.45 ng/ml

Instrument :
 ECD_L
 ClientSampleId :
 CSA-2-1-12



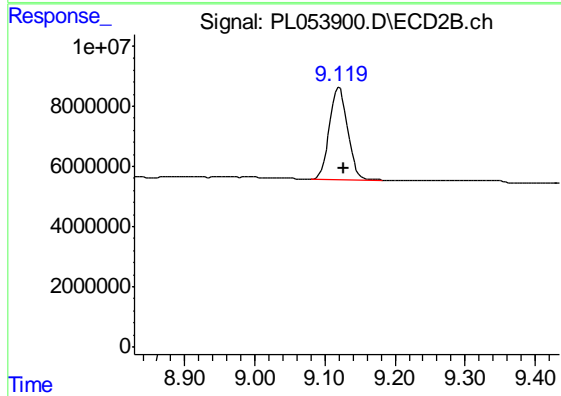
#1 Tetrachloro-m-xylene

R.T.: 4.044 min
 Delta R.T.: -0.001 min
 Response: 45664158
 Conc: 18.25 ng/ml



#28 Decachlorobiphenyl

R.T.: 8.325 min
 Delta R.T.: -0.009 min
 Response: 178540562
 Conc: 18.20 ng/ml



#28 Decachlorobiphenyl

R.T.: 9.120 min
 Delta R.T.: -0.006 min
 Response: 55103790
 Conc: 19.57 ng/ml