

Data Path : Z:\pestpcbsrv\HPCHEM1\ECD_L\Data\PL102920\
 Data File : PL062696.D
 Signal(s) : Signal #1: ECD1A.ch Signal #2: ECD2B.ch
 Acq On : 29 Oct 2020 17:15
 Operator : DD\AJ
 Sample : L4539-02
 Misc :
 ALS Vial : 16 Sample Multiplier: 1

Instrument :
 ECD_L
 ClientSampleId :
 JCG-SOIL

Integration File signal 1: autoint1.e
 Integration File signal 2: autoint2.e
 Quant Time: Oct 30 01:20:03 2020
 Quant Method : Z:\pestpcbsrv\HPCHEM1\ECD_L\methods\PL102120.M
 Quant Title : GC Extractables
 QLast Update : Thu Oct 22 04:25:31 2020
 Response via : Initial Calibration
 Integrator: ChemStation

Volume Inj. : 1 µl
 Signal #1 Phase : ZB-MR2 Signal #2 Phase: ZB-MR1
 Signal #1 Info : 30M x 0.32mm x0.2 Signal #2 Info : 30M x 0.32mm x0.5µm

Compound	RT#1	RT#2	Resp#1	Resp#2	ng/ml	ng/ml

System Monitoring Compounds						
1) SA Tetrachlo...	3.412	3.952	27632191	54920912	16.064	18.689
28) SA Decachlor...	8.130	8.995	24009313	32603554	14.966	15.578

Target Compounds

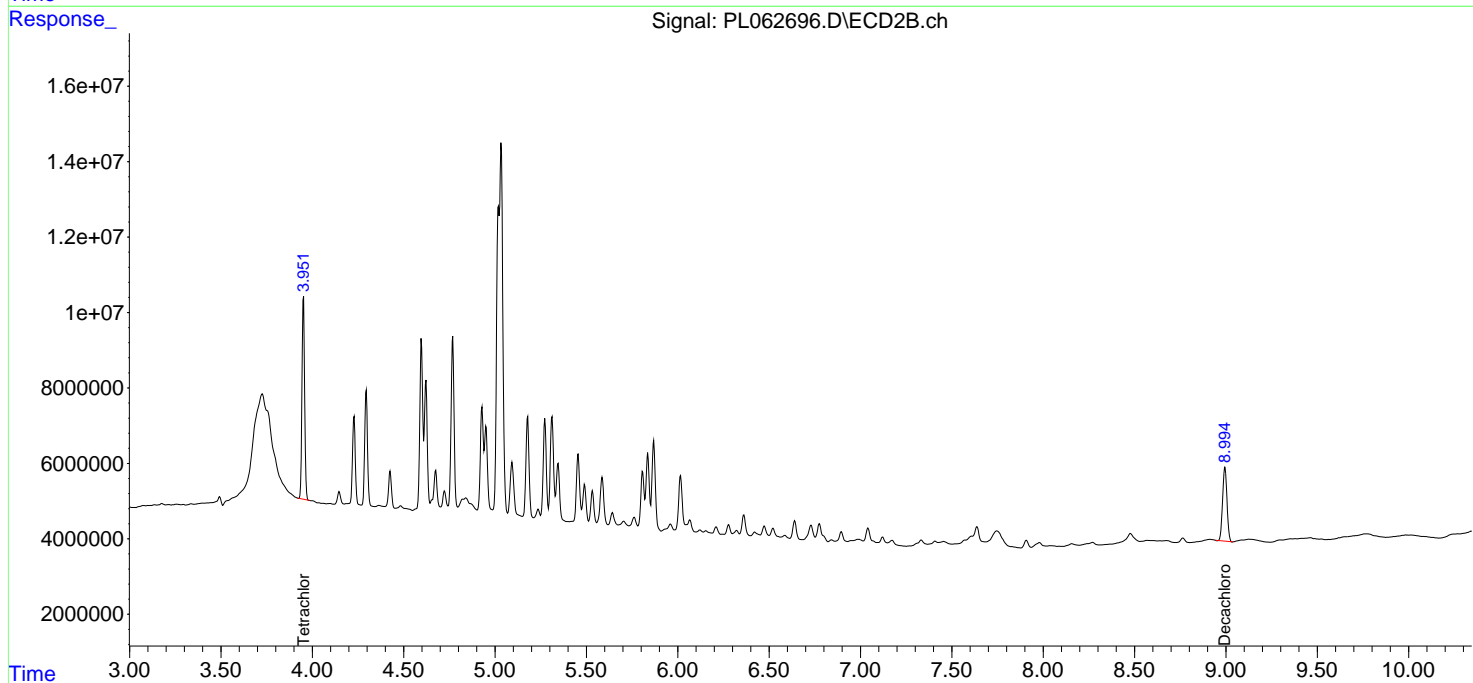
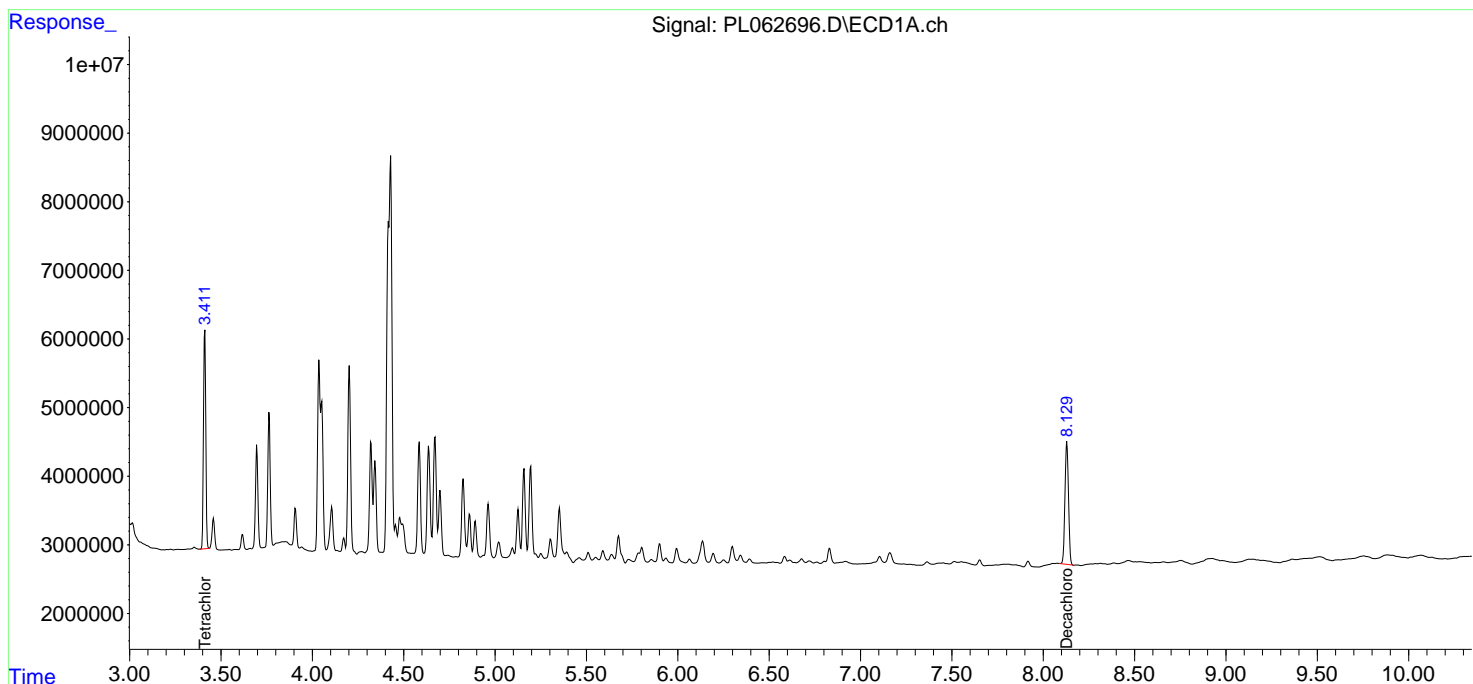
(f)=RT Delta > 1/2 Window (#)=Amounts differ by > 25% (m)=manual int.

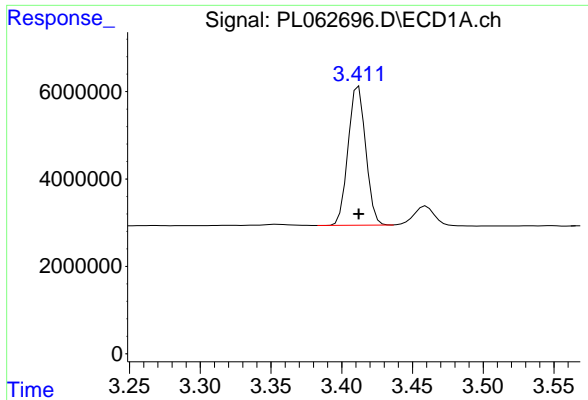
Data Path : Z:\pestpcbsrv\HPCHEM1\ECD_L\Data\PL102920\
 Data File : PL062696.D
 Signal(s) : Signal #1: ECD1A.ch Signal #2: ECD2B.ch
 Acq On : 29 Oct 2020 17:15
 Operator : DD\AJ
 Sample : L4539-02
 Misc :
 ALS Vial : 16 Sample Multiplier: 1

Instrument :
 ECD_L
 ClientSampled :
 JCG-SOIL

Integration File signal 1: autoint1.e
 Integration File signal 2: autoint2.e
 Quant Time: Oct 30 01:20:03 2020
 Quant Method : Z:\pestpcbsrv\HPCHEM1\ECD_L\methods\PL102120.M
 Quant Title : GC Extractables
 QLast Update : Thu Oct 22 04:25:31 2020
 Response via : Initial Calibration
 Integrator: ChemStation

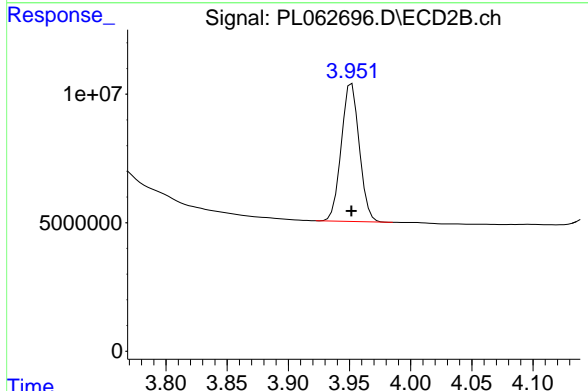
Volume Inj. : 1 µl
 Signal #1 Phase : ZB-MR2 Signal #2 Phase: ZB-MR1
 Signal #1 Info : 30M x 0.32mm x0.2 Signal #2 Info : 30M x 0.32mm x0.5µm



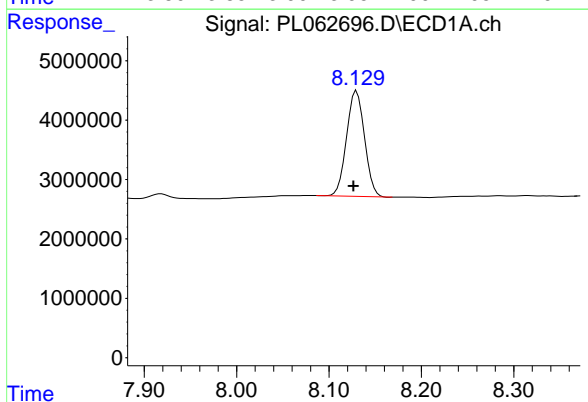


#1 Tetrachloro-m-xylene
 R.T.: 3.412 min
 Delta R.T.: 0.000 min
 Response: 27632191
 Conc: 16.06 ng/ml

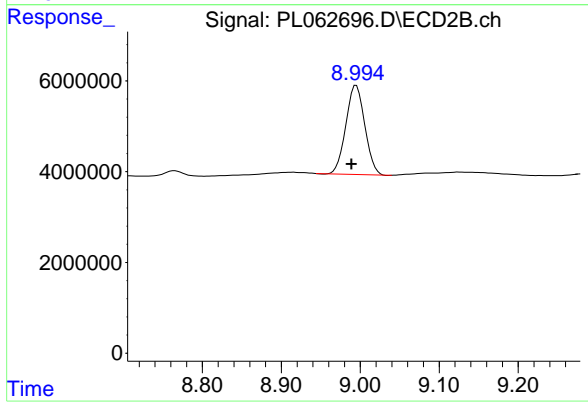
Instrument :
 ECD_L
 ClientSampleId :
 JCG-SOIL



#1 Tetrachloro-m-xylene
 R.T.: 3.952 min
 Delta R.T.: 0.000 min
 Response: 54920912
 Conc: 18.69 ng/ml



#28 Decachlorobiphenyl
 R.T.: 8.130 min
 Delta R.T.: 0.004 min
 Response: 24009313
 Conc: 14.97 ng/ml



#28 Decachlorobiphenyl
 R.T.: 8.995 min
 Delta R.T.: 0.006 min
 Response: 32603554
 Conc: 15.58 ng/ml