

Data Path : Z:\pestpcbsrv\HPCHEM1\ECD_L\Data\PL102922\
 Data File : PL078622.D
 Signal(s) : Signal #1: ECD1A.ch Signal #2: ECD2B.ch
 Acq On : 28 Oct 2022 15:42
 Operator : AR\AJ
 Sample : N5313-01
 Misc :
 ALS Vial : 8 Sample Multiplier: 1

Instrument :
 ECD_L
 ClientSampleId :

Integration File signal 1: autoint1.e
 Integration File signal 2: autoint2.e
 Quant Time: Oct 29 01:42:08 2022
 Quant Method : Z:\pestpcbsrv\HPCHEM1\ECD_L\methods\PL102122.M
 Quant Title : GC Extractables
 QLast Update : Fri Oct 21 07:08:41 2022
 Response via : Initial Calibration
 Integrator: ChemStation

Volume Inj. : 1 µl
 Signal #1 Phase : ZB-MR2 Signal #2 Phase: ZB-MR1
 Signal #1 Info : 30M x 0.32mm x0.2 Signal #2 Info : 30M x 0.32mm x0.5µm

	Compound	RT#1	RT#2	Resp#1	Resp#2	ng/ml	ng/ml

System Monitoring Compounds							
1)	SA Tetrachlo...	3.325	2.573	19018580	23540446	9.973	9.220
28)	SA Decachlor...	8.779	7.644	13356291	17463426	8.878	9.220
Target Compounds							
2)	A alpha-BHC	3.812f	0.000	2059974	0	0.717	N.D. #
3)	MA gamma-BHC...	4.090f	0.000	130405	0	0.049	N.D. #
4)	MA Heptachlor	0.000	3.729f	0	1970068	N.D.	0.568 #
5)	MB Aldrin	0.000	3.968	0	1366346	N.D.	0.390 #
7)	B delta-BHC	4.547f	3.906	323537	573692	0.142	0.158
8)	B Heptachlo...	5.461	0.000	1477413	0	0.696	N.D. #
10)	B gamma-Chl...	5.694f	4.710f	3081156	2786282	1.365	0.909 #
11)	B alpha-Chl...	5.797	0.000	1107796	0	0.479	N.D. #
12)	B 4,4'-DDE	5.976	4.982	4134372	3263674	2.066	1.199 #
13)	MA Dieldrin	6.127	5.111	-42247	2420774	N.D.	0.817
14)	MA Endrin	6.359	5.354f	2921272	3492895	1.539	1.341
15)	B Endosulfa...	6.560f	5.663	265091	2085020	0.141	0.916 #
16)	A 4,4'-DDD	6.503	0.000	3628204	0	2.176	N.D. #
17)	MA 4,4'-DDT	6.812	5.776	848319	7067516	0.473	3.258 #
19)	B Endosulfa...	0.000	6.069	0	651904	N.D.	0.274 #
20)	A Methoxychlor	0.000	6.328f	0	1868937	N.D.	1.647 #
25)	Chlordane-3	5.694f	4.710f	3081156	2786282	9.224	9.142
26)	Chlordane-4	5.797	4.757f	1107796	4301857	2.698	13.165 #
27)	Chlordane-5	6.626f	5.454	1245632	2590646	19.049	31.765 #

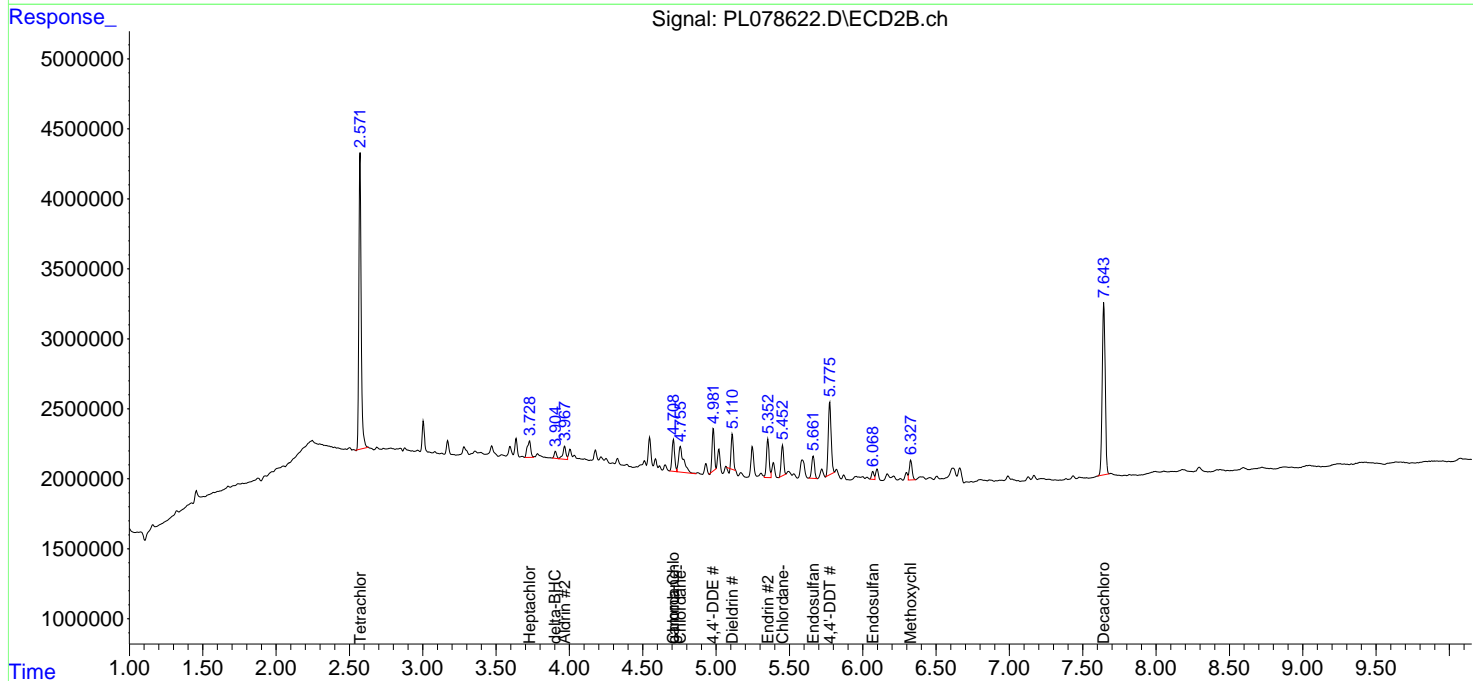
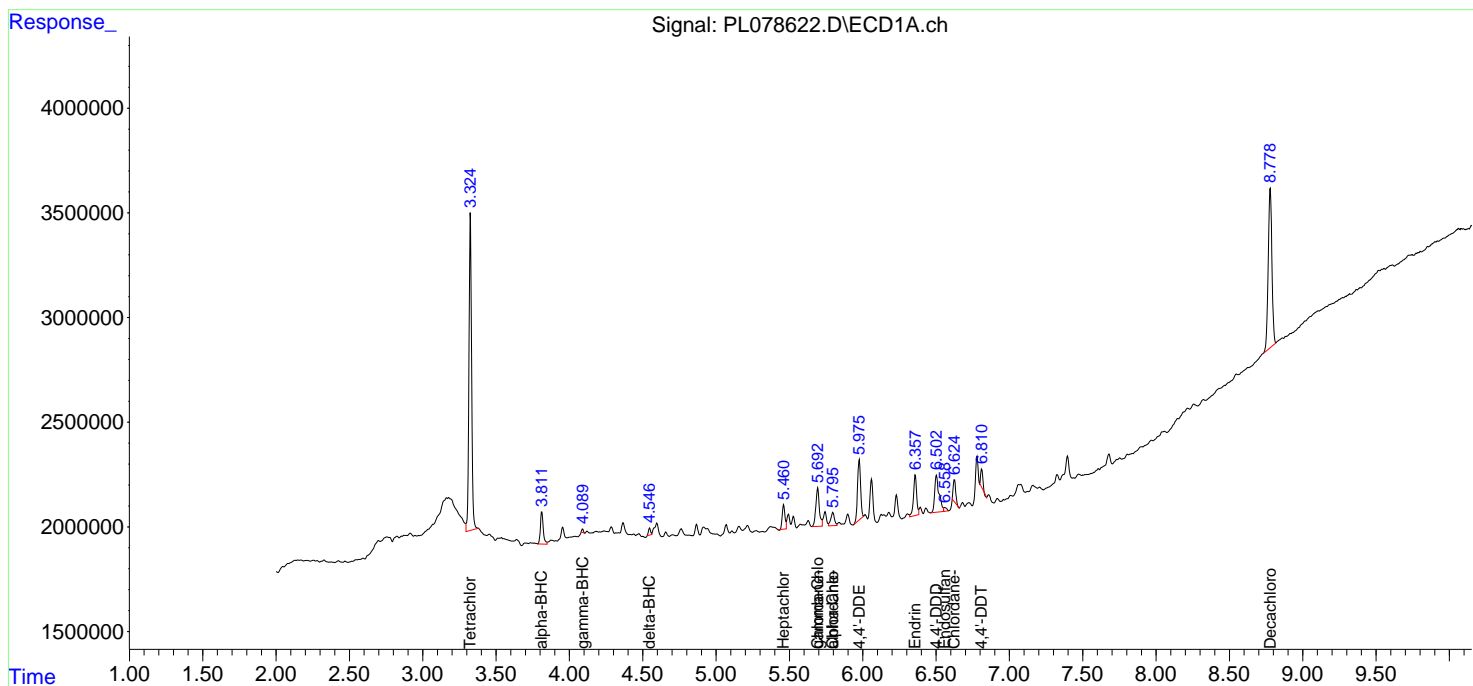
(f)=RT Delta > 1/2 Window (#)=Amounts differ by > 25% (m)=manual int.

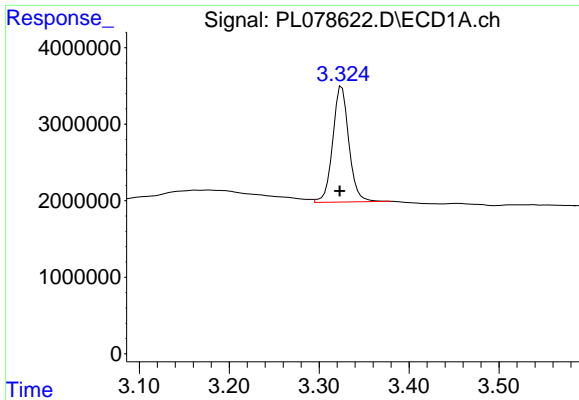
Data Path : Z:\pestpcbsrv\HPCHEM1\ECD_L\Data\PL102922\
 Data File : PL078622.D
 Signal(s) : Signal #1: ECD1A.ch Signal #2: ECD2B.ch
 Acq On : 28 Oct 2022 15:42
 Operator : AR\AJ
 Sample : N5313-01
 Misc :
 ALS Vial : 8 Sample Multiplier: 1

Instrument :
 ECD_L
 ClientSampleId :

Integration File signal 1: autoint1.e
 Integration File signal 2: autoint2.e
 Quant Time: Oct 29 01:42:08 2022
 Quant Method : Z:\pestpcbsrv\HPCHEM1\ECD_L\methods\PL102122.M
 Quant Title : GC Extractables
 QLast Update : Fri Oct 21 07:08:41 2022
 Response via : Initial Calibration
 Integrator: ChemStation

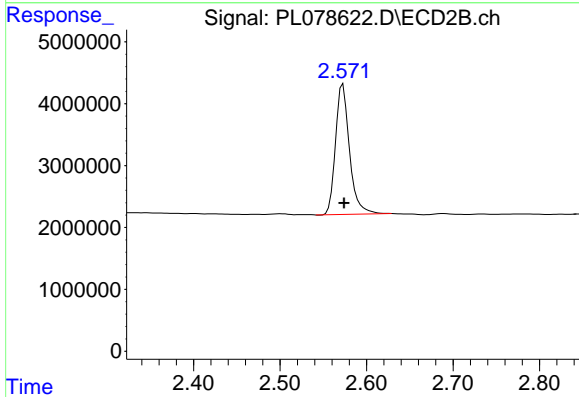
Volume Inj. : 1 µl
 Signal #1 Phase : ZB-MR2 Signal #2 Phase: ZB-MR1
 Signal #1 Info : 30M x 0.32mm x0.2 Signal #2 Info : 30M x 0.32mm x0.5µm



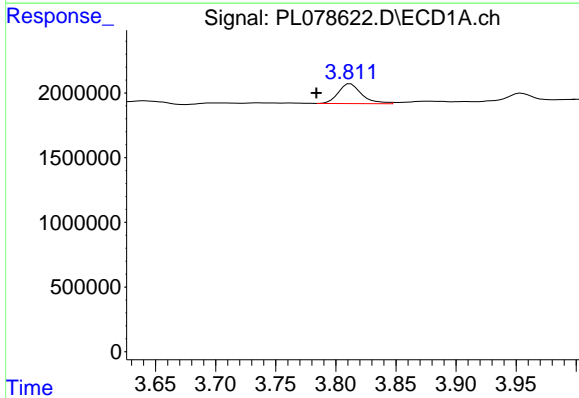


#1 Tetrachloro-m-xylene
 R.T.: 3.325 min
 Delta R.T.: 0.002 min
 Response: 19018580
 Conc: 9.97 ng/ml

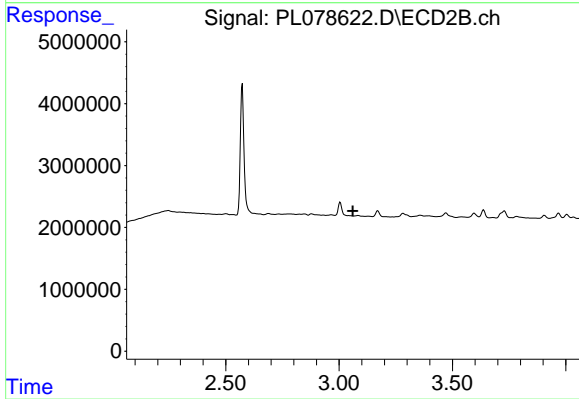
Instrument :
 ECD_L
 ClientSampleId :



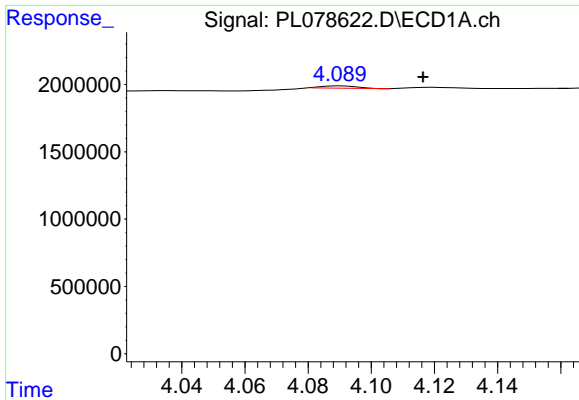
#1 Tetrachloro-m-xylene
 R.T.: 2.573 min
 Delta R.T.: -0.001 min
 Response: 23540446
 Conc: 9.22 ng/ml



#2 alpha-BHC
 R.T.: 3.812 min
 Delta R.T.: 0.028 min
 Response: 2059974
 Conc: 0.72 ng/ml

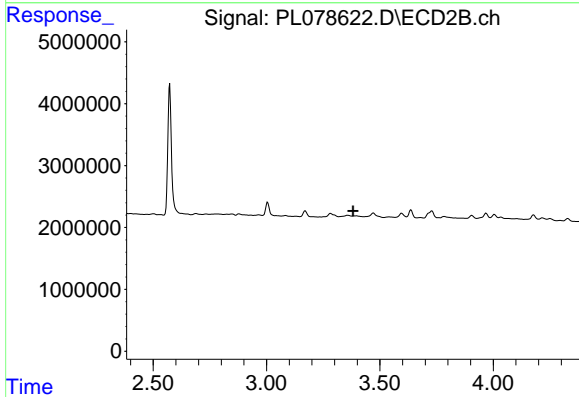


#2 alpha-BHC
 R.T.: 0.000 min
 Exp R.T. : 3.061 min
 Response: 0
 Conc: N.D.

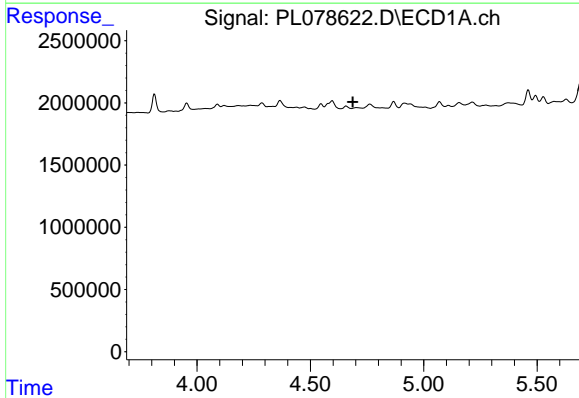


#3 gamma-BHC (Lindane)
 R.T.: 4.090 min
 Delta R.T.: -0.026 min
 Response: 130405
 Conc: 0.05 ng/ml

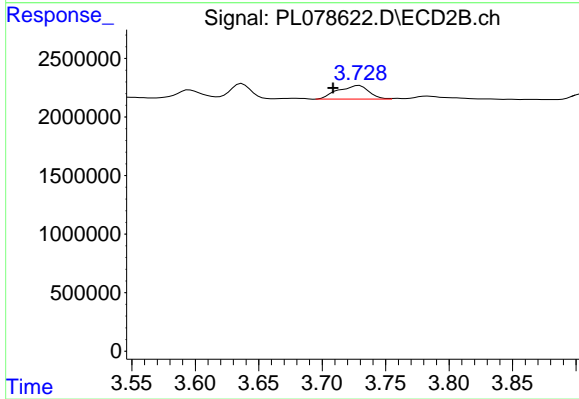
Instrument :
 ECD_L
 ClientSampleId :



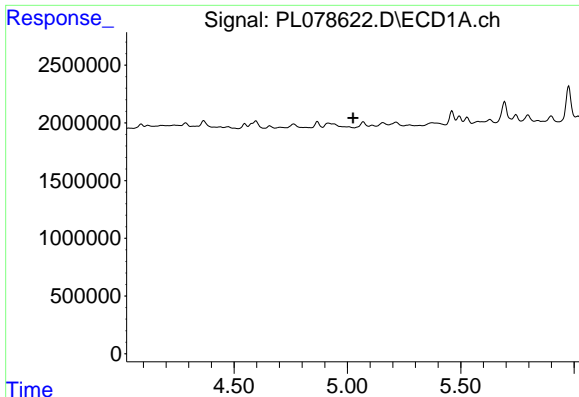
#3 gamma-BHC (Lindane)
 R.T.: 0.000 min
 Exp R.T. : 3.382 min
 Response: 0
 Conc: N.D.



#4 Heptachlor
 R.T.: 0.000 min
 Exp R.T. : 4.688 min
 Response: 0
 Conc: N.D.

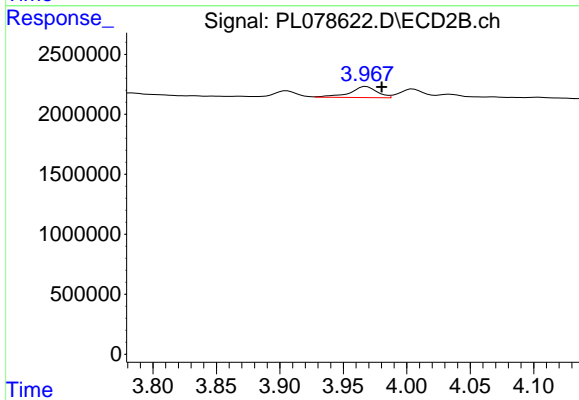


#4 Heptachlor
 R.T.: 3.729 min
 Delta R.T.: 0.020 min
 Response: 1970068
 Conc: 0.57 ng/ml

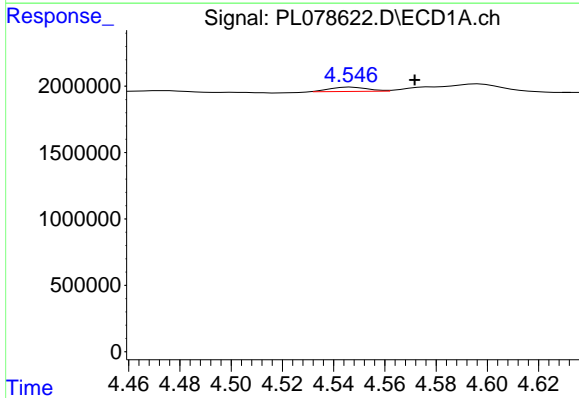


#5 Aldrin
 R.T.: 0.000 min
 Exp R.T.: 5.025 min
 Response: 0
 Conc: N.D.

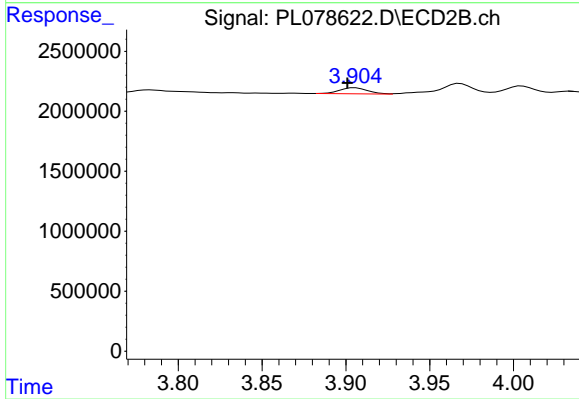
Instrument :
 ECD_L
 ClientSampleId :



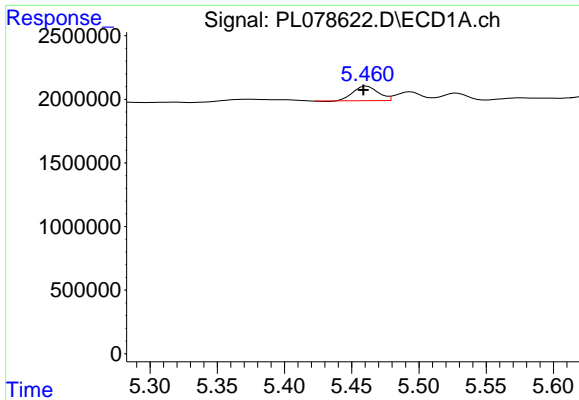
#5 Aldrin
 R.T.: 3.968 min
 Delta R.T.: -0.012 min
 Response: 1366346
 Conc: 0.39 ng/ml



#7 delta-BHC
 R.T.: 4.547 min
 Delta R.T.: -0.025 min
 Response: 323537
 Conc: 0.14 ng/ml



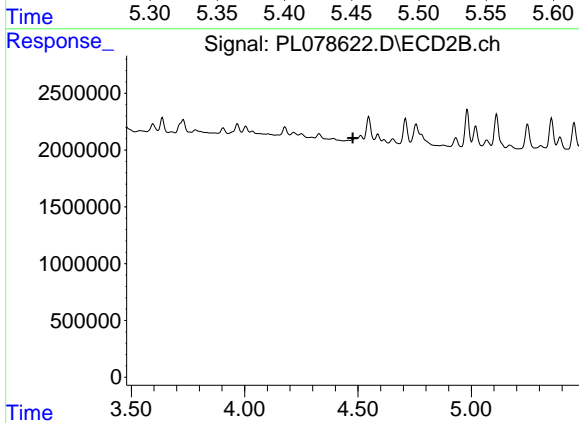
#7 delta-BHC
 R.T.: 3.906 min
 Delta R.T.: 0.005 min
 Response: 573692
 Conc: 0.16 ng/ml



#8 Heptachlor epoxide

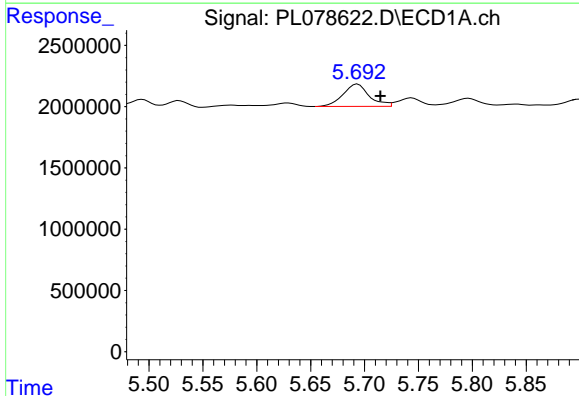
R.T.: 5.461 min
 Delta R.T.: 0.003 min
 Response: 1477413
 Conc: 0.70 ng/ml

Instrument :
 ECD_L
 ClientSampleId :



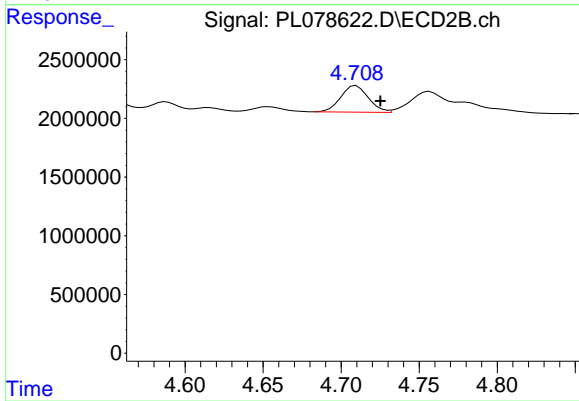
#8 Heptachlor epoxide

R.T.: 0.000 min
 Exp R.T. : 4.477 min
 Response: 0
 Conc: N.D.



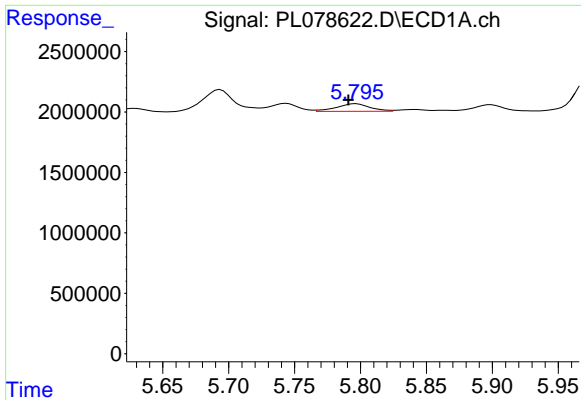
#10 gamma-Chlordane

R.T.: 5.694 min
 Delta R.T.: -0.021 min
 Response: 3081156
 Conc: 1.37 ng/ml



#10 gamma-Chlordane

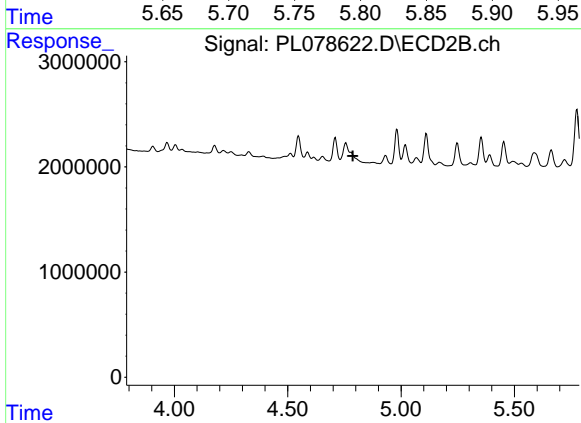
R.T.: 4.710 min
 Delta R.T.: -0.015 min
 Response: 2786282
 Conc: 0.91 ng/ml



#11 alpha-Chlordane

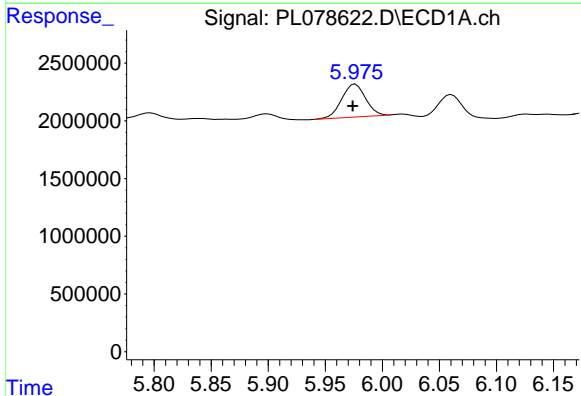
R.T.: 5.797 min
 Delta R.T.: 0.006 min
 Response: 1107796
 Conc: 0.48 ng/ml

Instrument :
 ECD_L
 ClientSampleId :



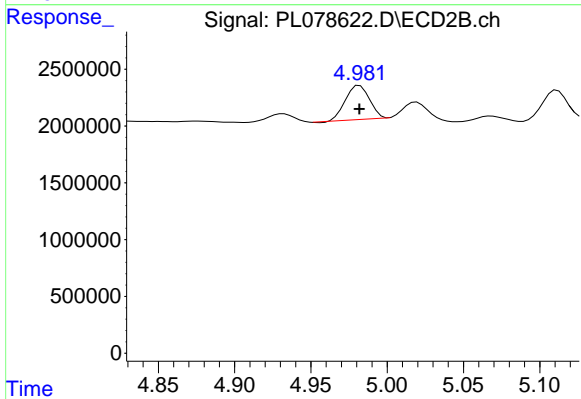
#11 alpha-Chlordane

R.T.: 0.000 min
 Exp R.T. : 4.787 min
 Response: 0
 Conc: N.D.



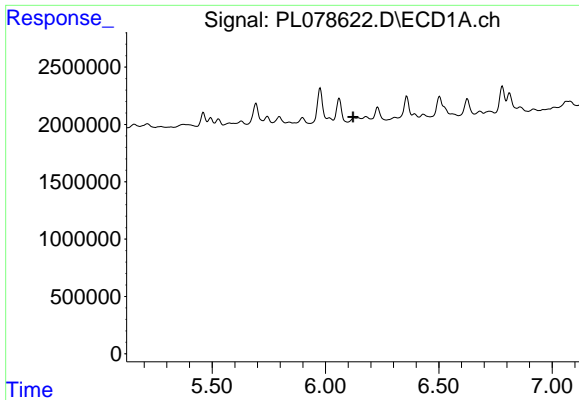
#12 4,4'-DDE

R.T.: 5.976 min
 Delta R.T.: 0.002 min
 Response: 4134372
 Conc: 2.07 ng/ml



#12 4,4'-DDE

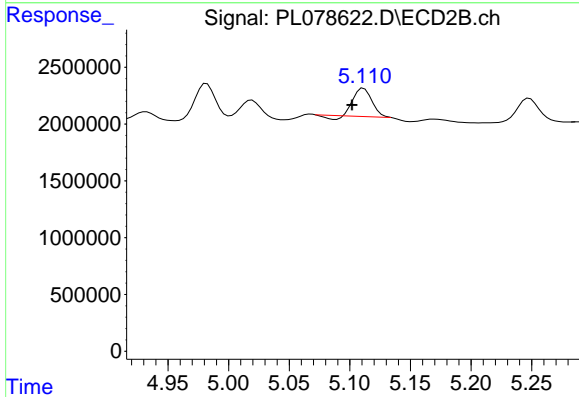
R.T.: 4.982 min
 Delta R.T.: 0.000 min
 Response: 3263674
 Conc: 1.20 ng/ml



#13 Dieldrin

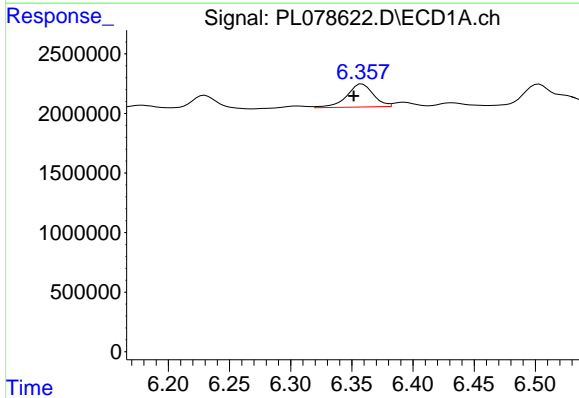
R.T.: 6.127 min
 Delta R.T.: 0.005 min
 Response: -42247
 Conc: N.D.

Instrument :
 ECD_L
 ClientSampleId :



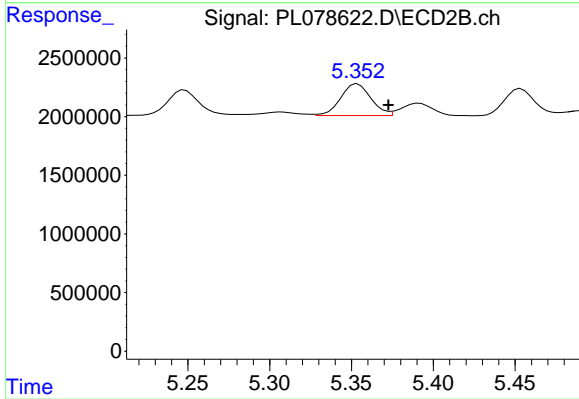
#13 Dieldrin

R.T.: 5.111 min
 Delta R.T.: 0.010 min
 Response: 2420774
 Conc: 0.82 ng/ml



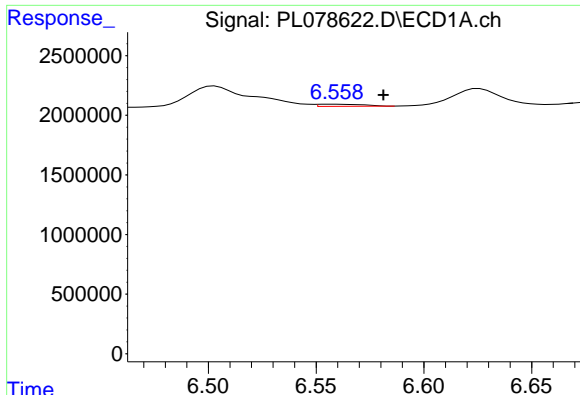
#14 Endrin

R.T.: 6.359 min
 Delta R.T.: 0.007 min
 Response: 2921272
 Conc: 1.54 ng/ml



#14 Endrin

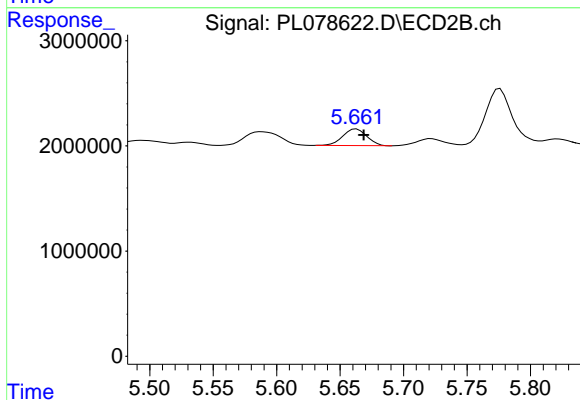
R.T.: 5.354 min
 Delta R.T.: -0.019 min
 Response: 3492895
 Conc: 1.34 ng/ml



#15 Endosulfan II

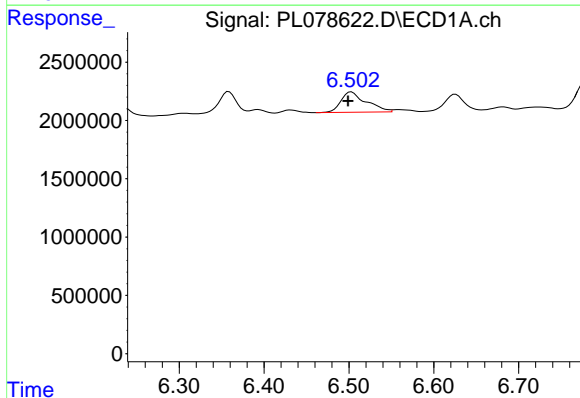
R.T.: 6.560 min
 Delta R.T.: -0.022 min
 Response: 265091
 Conc: 0.14 ng/ml

Instrument :
 ECD_L
 ClientSampleId :



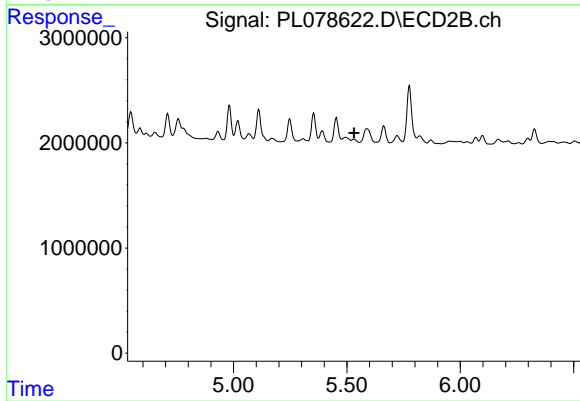
#15 Endosulfan II

R.T.: 5.663 min
 Delta R.T.: -0.006 min
 Response: 2085020
 Conc: 0.92 ng/ml



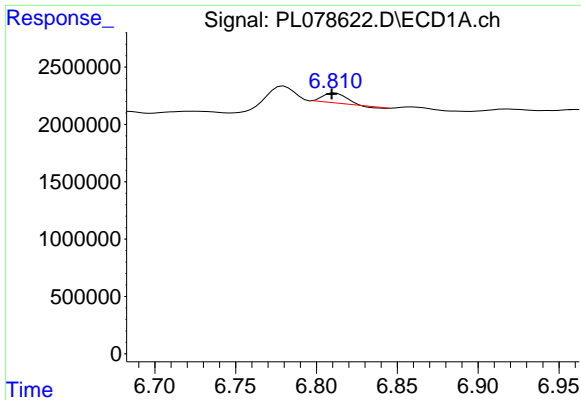
#16 4,4'-DDD

R.T.: 6.503 min
 Delta R.T.: 0.004 min
 Response: 3628204
 Conc: 2.18 ng/ml



#16 4,4'-DDD

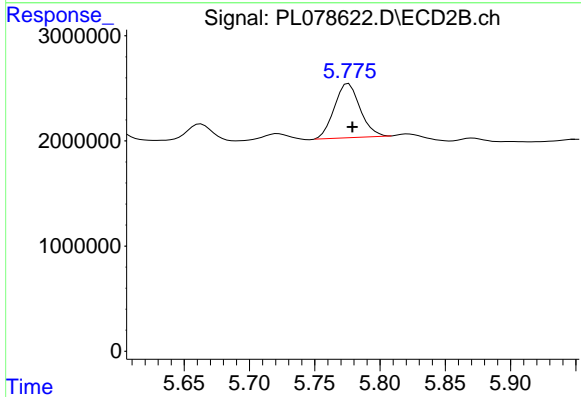
R.T.: 0.000 min
 Exp R.T.: 5.532 min
 Response: 0
 Conc: N.D.



#17 4,4'-DDT

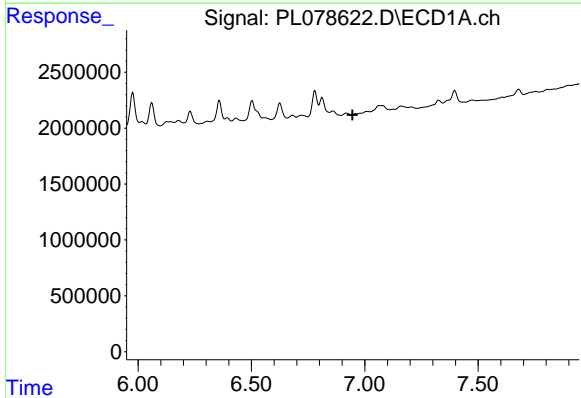
R.T.: 6.812 min
 Delta R.T.: 0.002 min
 Response: 848319
 Conc: 0.47 ng/ml

Instrument :
 ECD_L
 ClientSampleId :



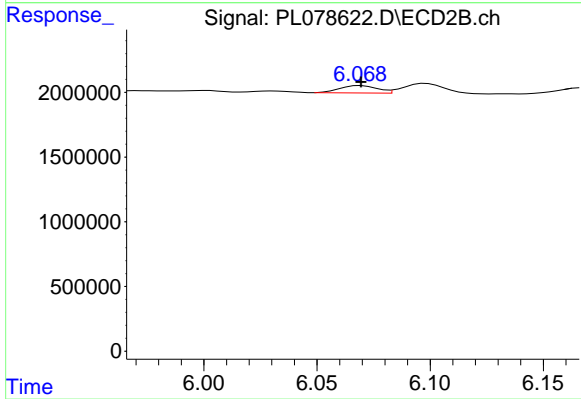
#17 4,4'-DDT

R.T.: 5.776 min
 Delta R.T.: -0.003 min
 Response: 7067516
 Conc: 3.26 ng/ml



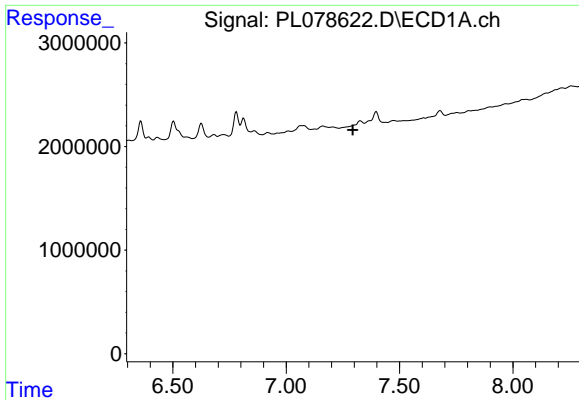
#19 Endosulfan Sulfate

R.T.: 0.000 min
 Exp R.T. : 6.946 min
 Response: 0
 Conc: N.D.



#19 Endosulfan Sulfate

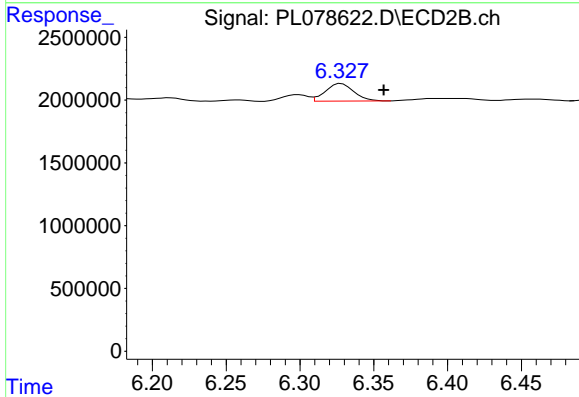
R.T.: 6.069 min
 Delta R.T.: 0.000 min
 Response: 651904
 Conc: 0.27 ng/ml



#20 Methoxychlor

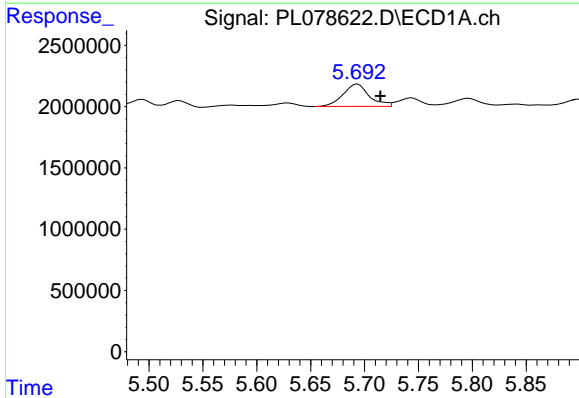
R.T.: 0.000 min
 Exp R.T.: 7.294 min
 Response: 0
 Conc: N.D.

Instrument :
 ECD_L
 ClientSampleId :



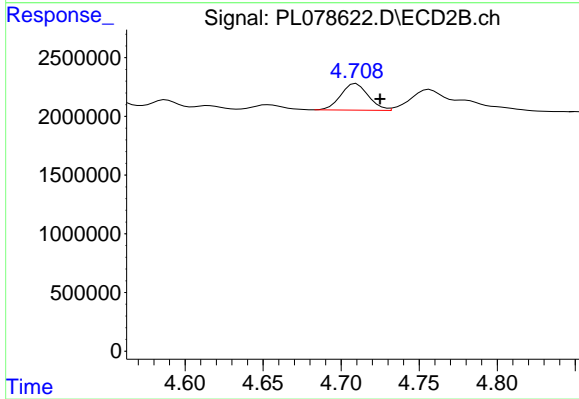
#20 Methoxychlor

R.T.: 6.328 min
 Delta R.T.: -0.029 min
 Response: 1868937
 Conc: 1.65 ng/ml



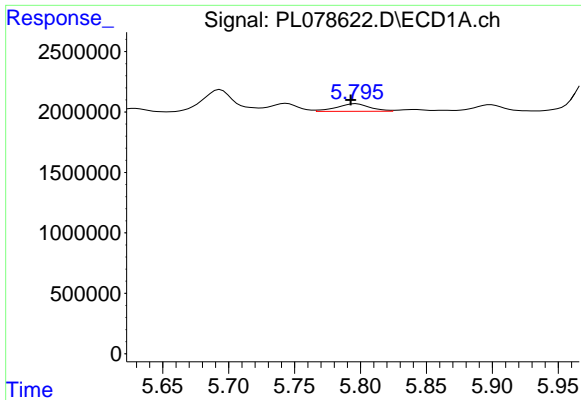
#25 Chlordane-3

R.T.: 5.694 min
 Delta R.T.: -0.021 min
 Response: 3081156
 Conc: 9.22 ng/ml



#25 Chlordane-3

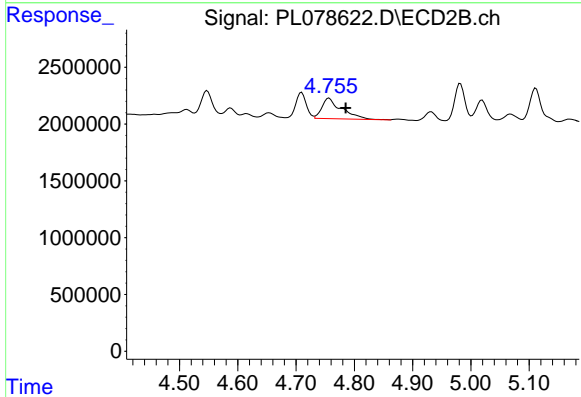
R.T.: 4.710 min
 Delta R.T.: -0.015 min
 Response: 2786282
 Conc: 9.14 ng/ml



#26 Chlordane-4

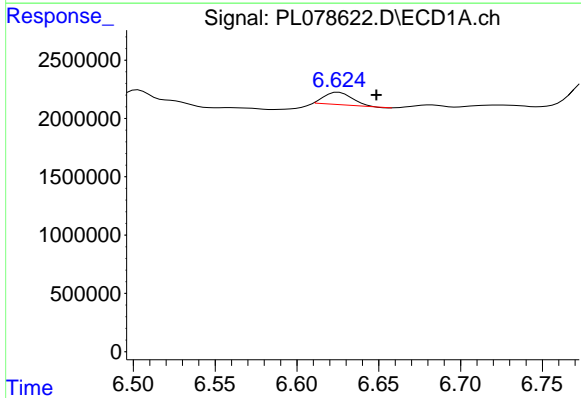
R.T.: 5.797 min
 Delta R.T.: 0.004 min
 Response: 1107796
 Conc: 2.70 ng/ml

Instrument :
 ECD_L
 ClientSampleId :



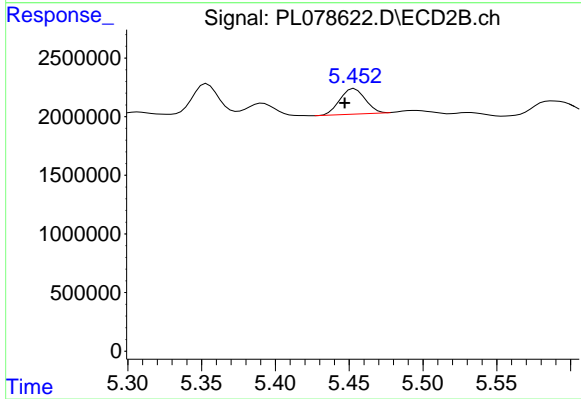
#26 Chlordane-4

R.T.: 4.757 min
 Delta R.T.: -0.029 min
 Response: 4301857
 Conc: 13.17 ng/ml



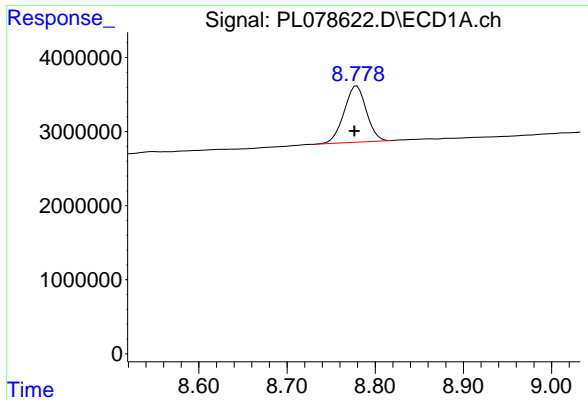
#27 Chlordane-5

R.T.: 6.626 min
 Delta R.T.: -0.023 min
 Response: 1245632
 Conc: 19.05 ng/ml



#27 Chlordane-5

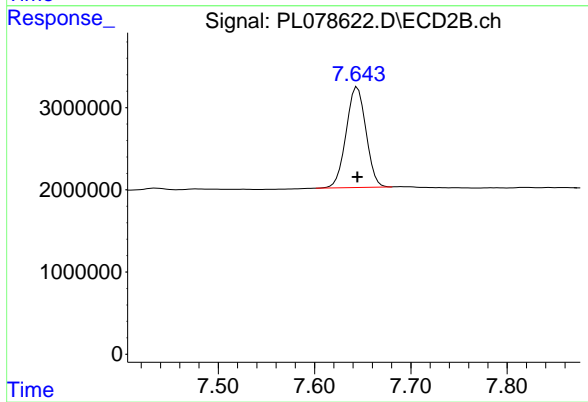
R.T.: 5.454 min
 Delta R.T.: 0.007 min
 Response: 2590646
 Conc: 31.77 ng/ml



#28 Decachlorobiphenyl

R.T.: 8.779 min
Delta R.T.: 0.003 min
Response: 13356291
Conc: 8.88 ng/ml

Instrument :
ECD_L
ClientSampleId :



#28 Decachlorobiphenyl

R.T.: 7.644 min
Delta R.T.: 0.000 min
Response: 17463426
Conc: 9.22 ng/ml