

Data Path : Z:\pestpcbsrv\HPCHEM1\ECD_L\Data\PL102922\
 Data File : PL078636.D
 Signal(s) : Signal #1: ECD1A.ch Signal #2: ECD2B.ch
 Acq On : 28 Oct 2022 18:58
 Operator : AR\AJ
 Sample : N5318-05
 Misc :
 ALS Vial : 19 Sample Multiplier: 1

Instrument :
 ECD_L
 ClientSampleId :

Integration File signal 1: autoint1.e
 Integration File signal 2: autoint2.e
 Quant Time: Oct 29 01:53:11 2022
 Quant Method : Z:\pestpcbsrv\HPCHEM1\ECD_L\methods\PL102122.M
 Quant Title : GC Extractables
 QLast Update : Fri Oct 21 07:08:41 2022
 Response via : Initial Calibration
 Integrator: ChemStation

Volume Inj. : 1 µl
 Signal #1 Phase : ZB-MR2 Signal #2 Phase: ZB-MR1
 Signal #1 Info : 30M x 0.32mm x0.2 Signal #2 Info : 30M x 0.32mm x0.5µm

| Compound | RT#1 | RT#2 | Resp#1 | Resp#2 | ng/ml | ng/ml |
|-----------------------------|--------|--------|----------|----------|--------|---------|
| ----- | | | | | | |
| System Monitoring Compounds | | | | | | |
| 1) SA Tetrachlo... | 3.322 | 2.572 | 37313092 | 48673619 | 19.566 | 19.064 |
| 28) SA Decachlor... | 8.774 | 7.643 | 26332689 | 31963494 | 17.504 | 16.875 |
| Target Compounds | | | | | | |
| 2) A alpha-BHC | 3.783 | 3.044f | 77695 | 298214 | 0.027 | 0.076 # |
| 3) MA gamma-BHC... | 0.000 | 3.394 | 0 | 292100 | N.D. | 0.081 # |
| 4) MA Heptachlor | 4.706f | 3.679f | 268953 | 302509 | 0.104 | 0.087 |
| 5) MB Aldrin | 0.000 | 3.952f | 0 | 902777 | N.D. | 0.258 # |
| 6) B beta-BHC | 4.305f | 3.679 | 2070510 | 302509 | 1.797 | 0.211 # |
| 7) B delta-BHC | 4.543f | 3.885f | 643572 | -22504 | 0.283 | N.D. # |
| 8) B Heptachlo... | 5.467 | 4.492 | 392867 | 377345 | 0.185 | 0.125 # |
| 10) B gamma-Chl... | 0.000 | 4.755f | 0 | 1159991 | N.D. | 0.379 # |
| 11) B alpha-Chl... | 5.797 | 4.782 | 458726 | 974694 | 0.198 | 0.327 # |
| 12) B 4,4'-DDE | 5.976 | 0.000 | 642560 | 0 | 0.321 | N.D. # |
| 13) MA Dieldrin | 0.000 | 5.113 | 0 | 392878 | N.D. | 0.133 # |
| 14) MA Endrin | 6.352 | 5.349f | 857671 | 250753 | 0.452 | 0.096 # |
| 15) B Endosulfa... | 6.553f | 0.000 | 626191 | 0 | 0.334 | N.D. # |
| 17) MA 4,4'-DDT | 6.838f | 0.000 | 179075 | 0 | 0.100 | N.D. # |
| 19) B Endosulfa... | 6.941 | 0.000 | 207967 | 0 | 0.113 | N.D. # |
| 21) B Endrin ke... | 7.436 | 6.552 | 315024 | 137945 | 0.167 | 0.053 # |
| 22) Mirex | 7.885 | 0.000 | 452777 | 0 | 0.310 | N.D. # |
| 23) Chlordane-1 | 0.000 | 3.551 | 0 | 243977 | N.D. | 2.419 # |
| 25) Chlordane-3 | 0.000 | 4.755f | 0 | 1159991 | N.D. | 3.806 # |
| 26) Chlordane-4 | 5.797 | 4.782 | 458726 | 974694 | 1.117 | 2.983 # |

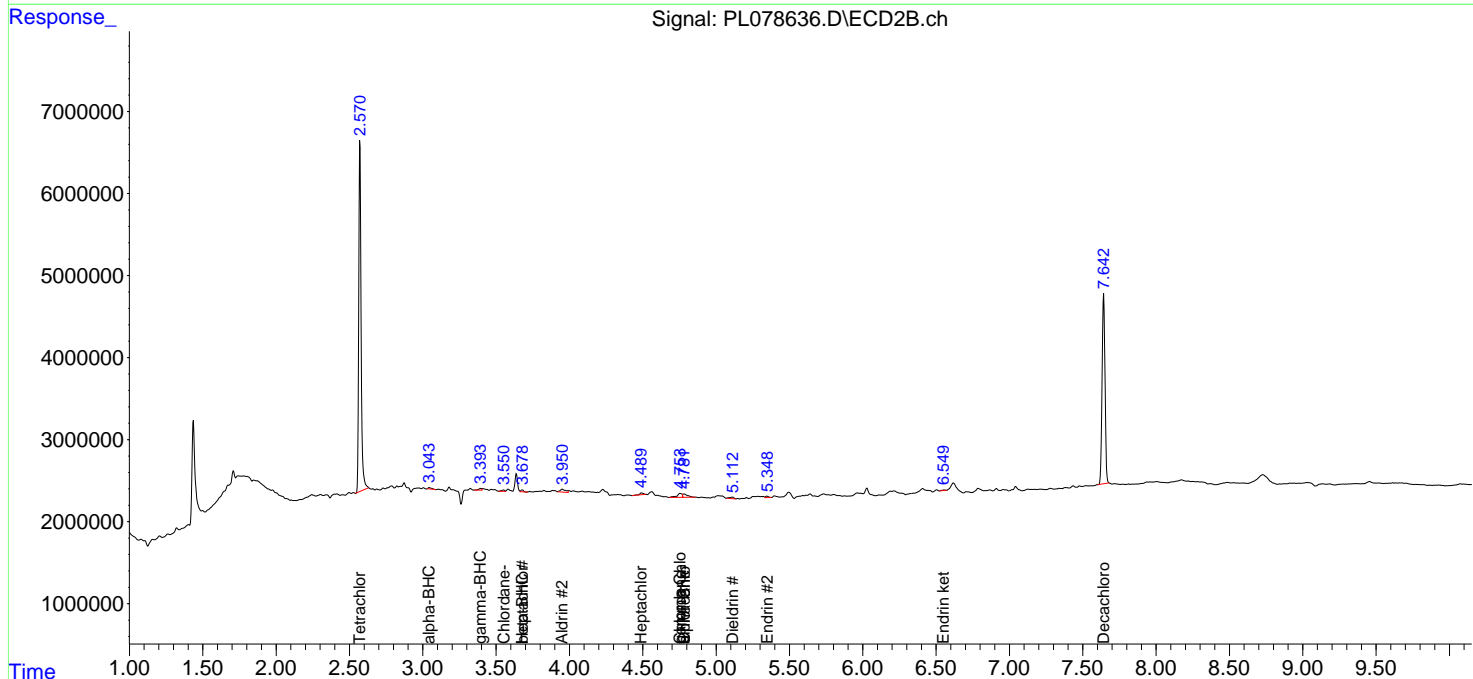
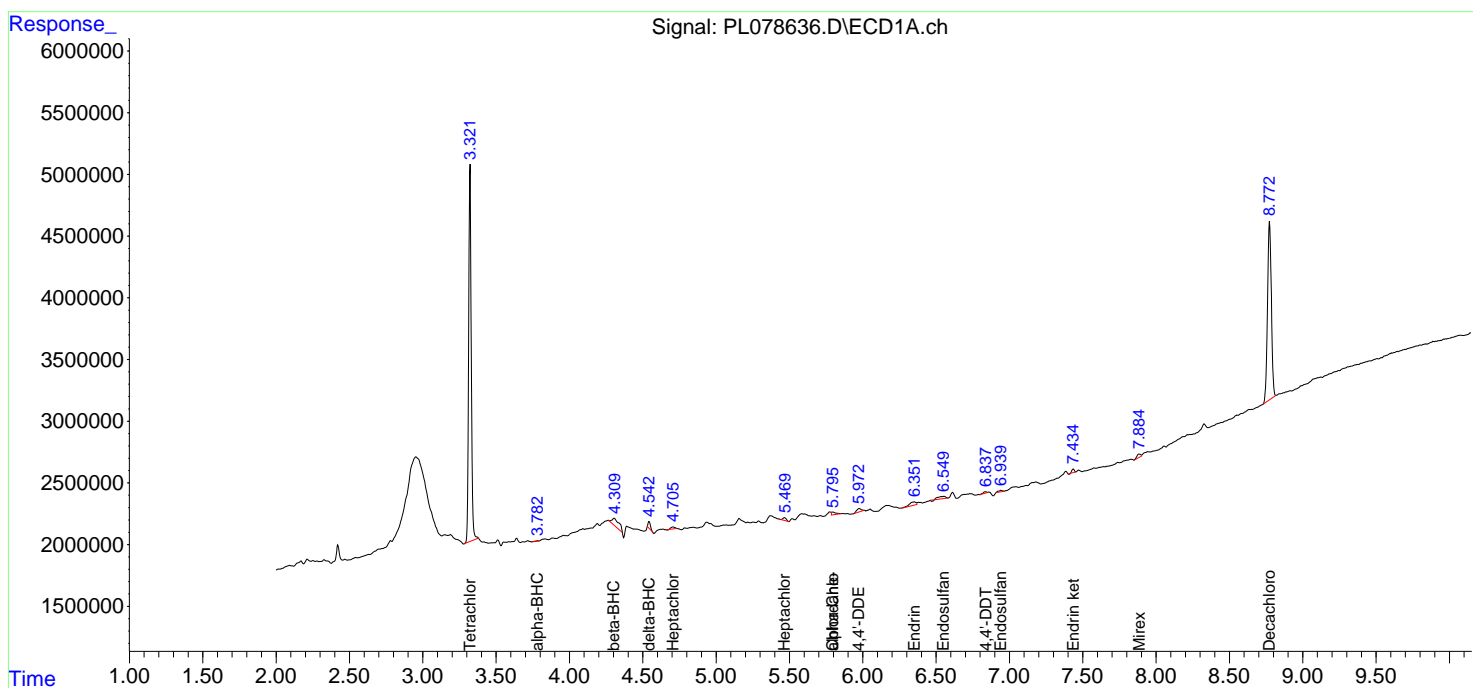
(f)=RT Delta > 1/2 Window (#)=Amounts differ by > 25% (m)=manual int.

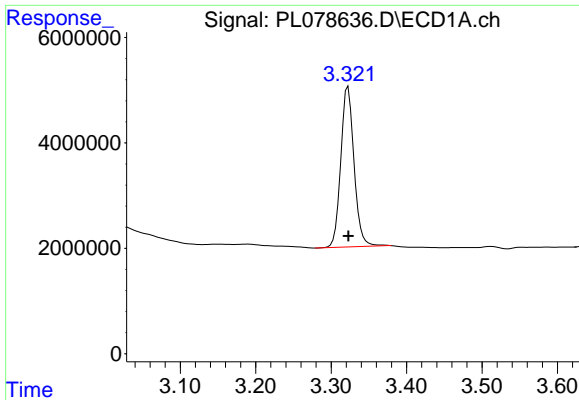
Data Path : Z:\pestpcbsrv\HPCHEM1\ECD_L\Data\PL102922\
 Data File : PL078636.D
 Signal(s) : Signal #1: ECD1A.ch Signal #2: ECD2B.ch
 Acq On : 28 Oct 2022 18:58
 Operator : AR\AJ
 Sample : N5318-05
 Misc :
 ALS Vial : 19 Sample Multiplier: 1

Instrument :
 ECD_L
 ClientSampleId :

Integration File signal 1: autoint1.e
 Integration File signal 2: autoint2.e
 Quant Time: Oct 29 01:53:11 2022
 Quant Method : Z:\pestpcbsrv\HPCHEM1\ECD_L\methods\PL102122.M
 Quant Title : GC Extractables
 QLast Update : Fri Oct 21 07:08:41 2022
 Response via : Initial Calibration
 Integrator: ChemStation

Volume Inj. : 1 µl
 Signal #1 Phase : ZB-MR2 Signal #2 Phase: ZB-MR1
 Signal #1 Info : 30M x 0.32mm x0.2 Signal #2 Info : 30M x 0.32mm x0.5µm

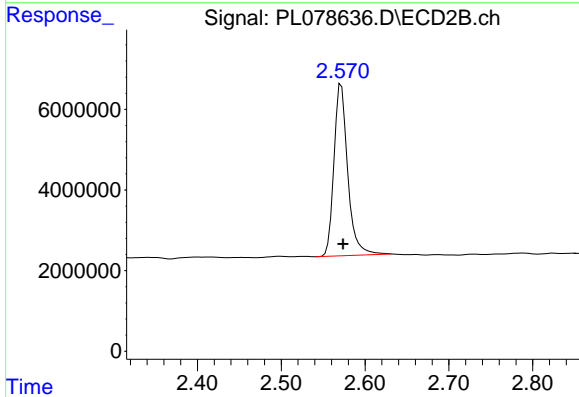




#1 Tetrachloro-m-xylene

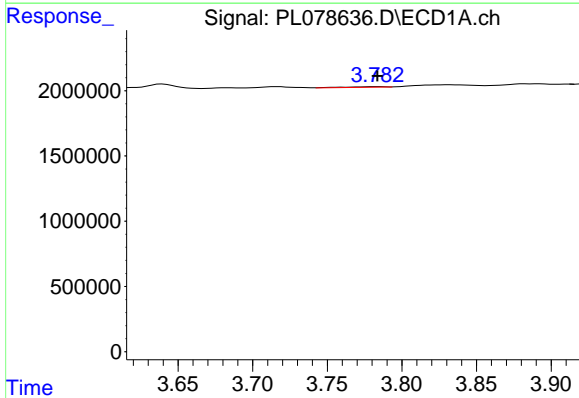
R.T.: 3.322 min
 Delta R.T.: 0.000 min
 Response: 37313092
 Conc: 19.57 ng/ml

Instrument :
 ECD_L
 ClientSampleId :



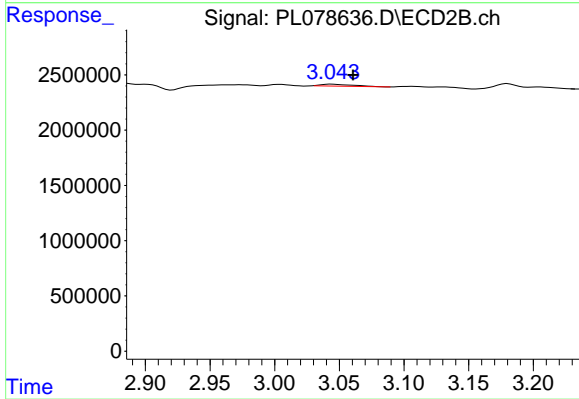
#1 Tetrachloro-m-xylene

R.T.: 2.572 min
 Delta R.T.: -0.002 min
 Response: 48673619
 Conc: 19.06 ng/ml



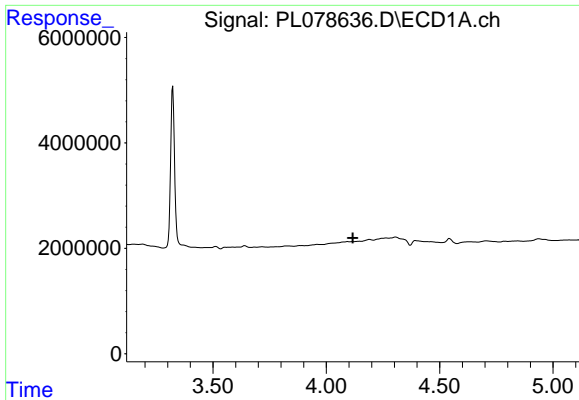
#2 alpha-BHC

R.T.: 3.783 min
 Delta R.T.: 0.000 min
 Response: 77695
 Conc: 0.03 ng/ml



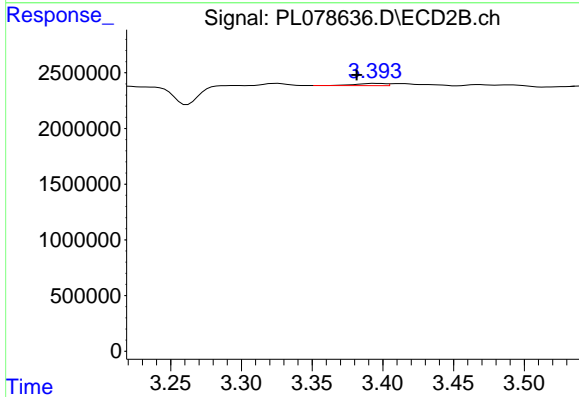
#2 alpha-BHC

R.T.: 3.044 min
 Delta R.T.: -0.016 min
 Response: 298214
 Conc: 0.08 ng/ml

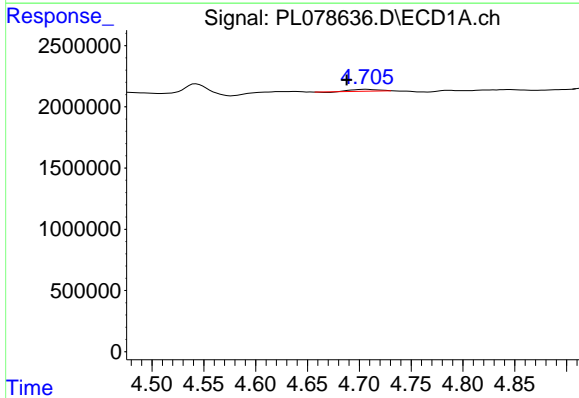


#3 gamma-BHC (Lindane)
 R.T.: 0.000 min
 Exp R.T.: 4.116 min
 Response: 0
 Conc: N.D.

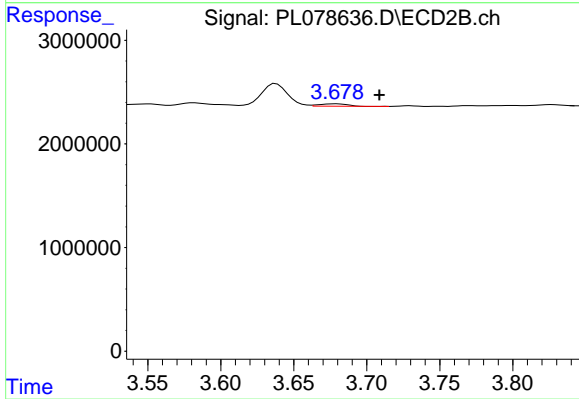
Instrument :
 ECD_L
 ClientSampleId :



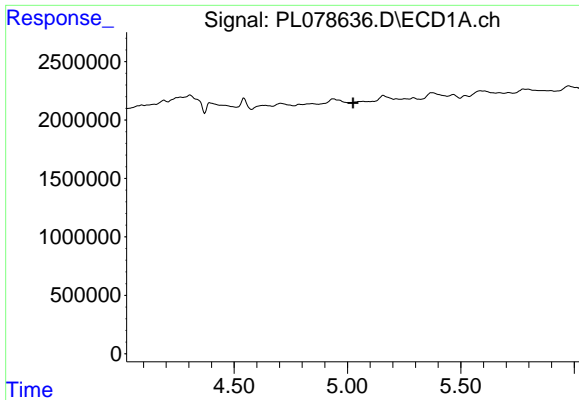
#3 gamma-BHC (Lindane)
 R.T.: 3.394 min
 Delta R.T.: 0.012 min
 Response: 292100
 Conc: 0.08 ng/ml



#4 Heptachlor
 R.T.: 4.706 min
 Delta R.T.: 0.019 min
 Response: 268953
 Conc: 0.10 ng/ml

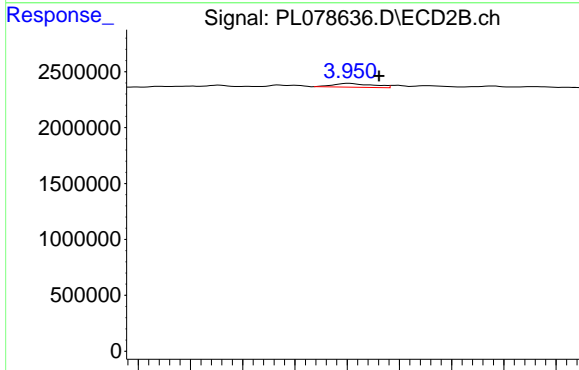


#4 Heptachlor
 R.T.: 3.679 min
 Delta R.T.: -0.030 min
 Response: 302509
 Conc: 0.09 ng/ml

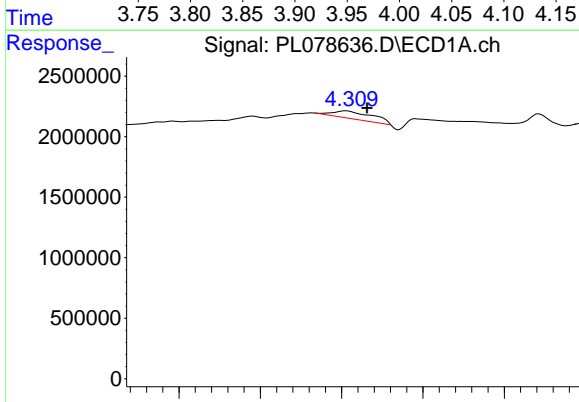


#5 Aldrin
 R.T.: 0.000 min
 Exp R.T.: 5.025 min
 Response: 0
 Conc: N.D.

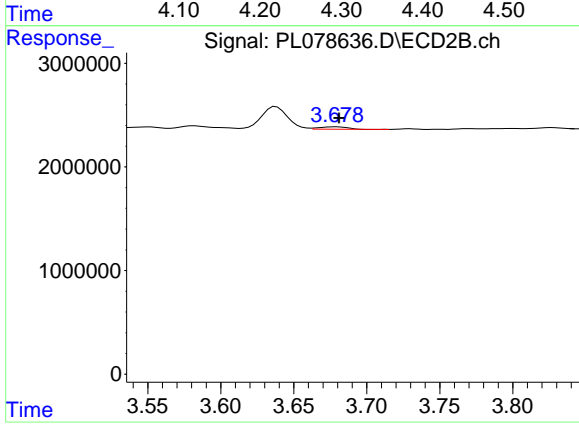
Instrument :
 ECD_L
 ClientSampleId :



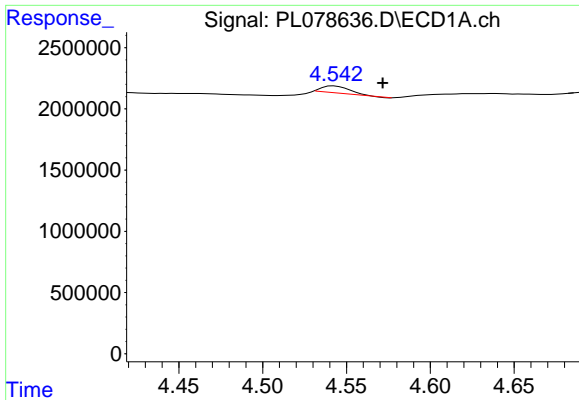
#5 Aldrin
 R.T.: 3.952 min
 Delta R.T.: -0.029 min
 Response: 902777
 Conc: 0.26 ng/ml



#6 beta-BHC
 R.T.: 4.305 min
 Delta R.T.: -0.026 min
 Response: 2070510
 Conc: 1.80 ng/ml



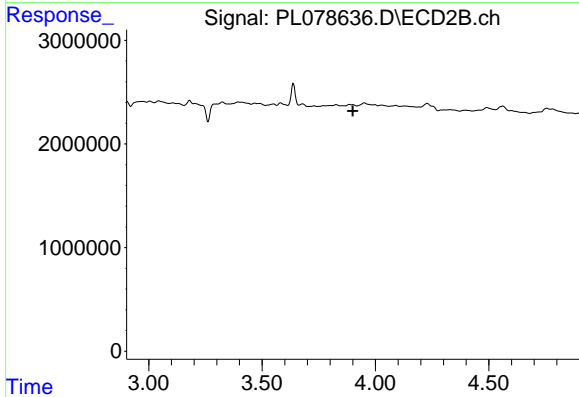
#6 beta-BHC
 R.T.: 3.679 min
 Delta R.T.: -0.002 min
 Response: 302509
 Conc: 0.21 ng/ml



#7 delta-BHC

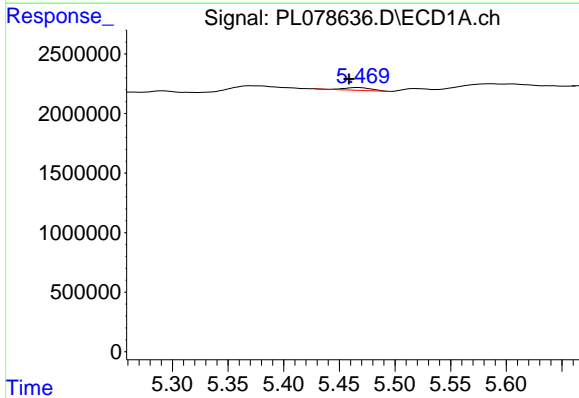
R.T.: 4.543 min
 Delta R.T.: -0.029 min
 Response: 643572
 Conc: 0.28 ng/ml

Instrument :
 ECD_L
 ClientSampleId :



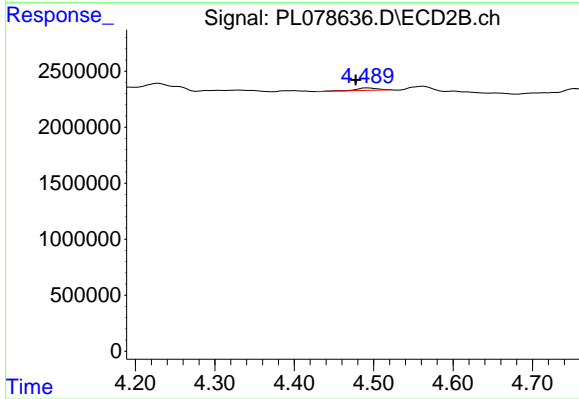
#7 delta-BHC

R.T.: 3.885 min
 Delta R.T.: -0.016 min
 Response: -22504
 Conc: N.D.



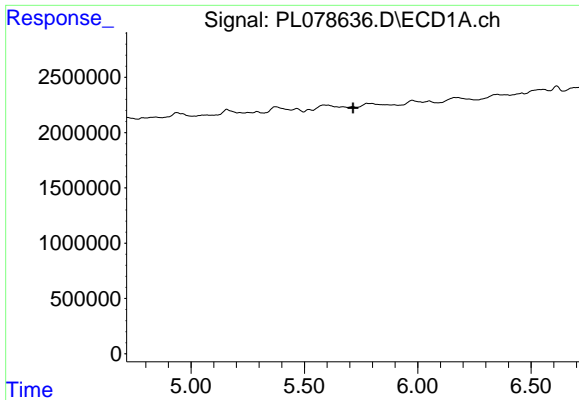
#8 Heptachlor epoxide

R.T.: 5.467 min
 Delta R.T.: 0.008 min
 Response: 392867
 Conc: 0.19 ng/ml



#8 Heptachlor epoxide

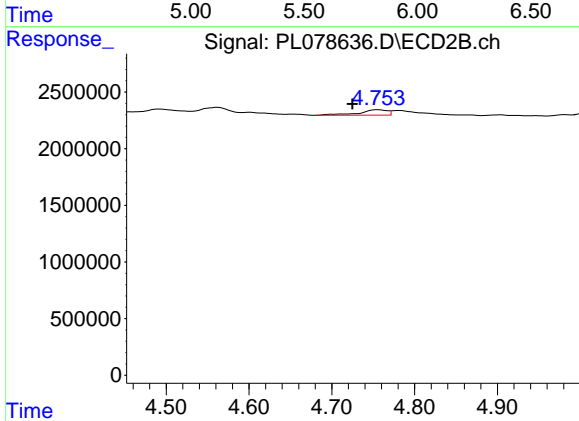
R.T.: 4.492 min
 Delta R.T.: 0.015 min
 Response: 377345
 Conc: 0.13 ng/ml



#10 gamma-Chlordane

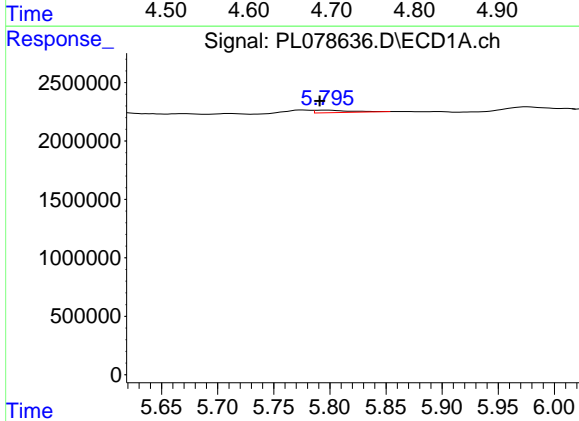
R.T.: 0.000 min
 Exp R.T.: 5.715 min
 Response: 0
 Conc: N.D.

Instrument :
 ECD_L
 ClientSampleId :



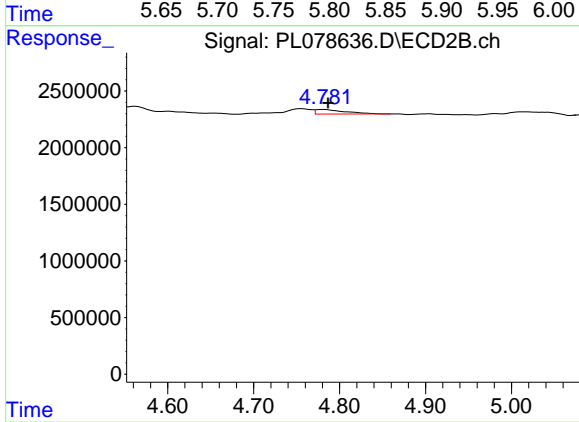
#10 gamma-Chlordane

R.T.: 4.755 min
 Delta R.T.: 0.030 min
 Response: 1159991
 Conc: 0.38 ng/ml



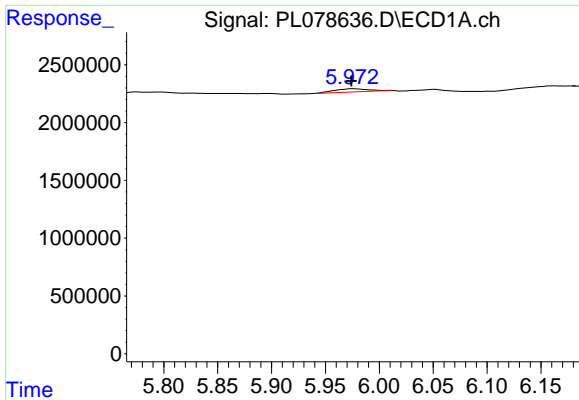
#11 alpha-Chlordane

R.T.: 5.797 min
 Delta R.T.: 0.006 min
 Response: 458726
 Conc: 0.20 ng/ml



#11 alpha-Chlordane

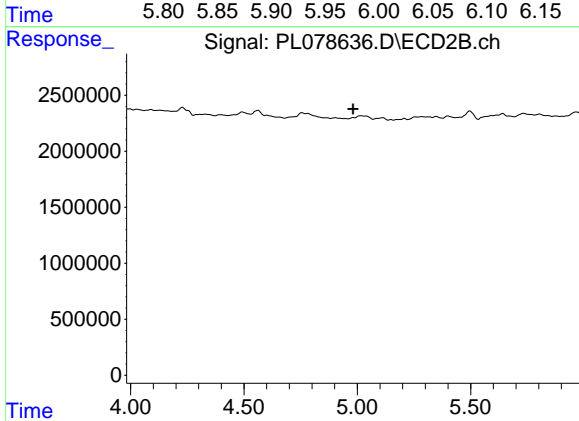
R.T.: 4.782 min
 Delta R.T.: -0.005 min
 Response: 974694
 Conc: 0.33 ng/ml



#12 4,4'-DDE

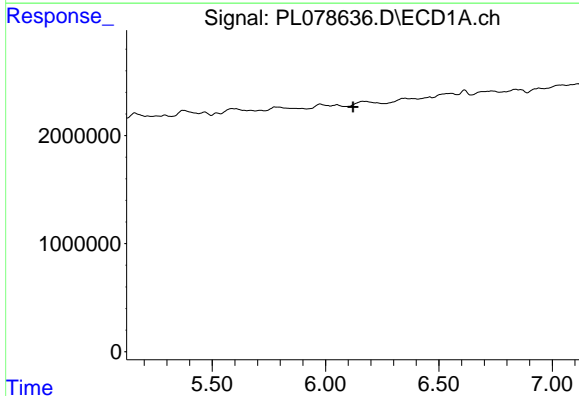
R.T.: 5.976 min
 Delta R.T.: 0.002 min
 Response: 642560
 Conc: 0.32 ng/ml

Instrument :
 ECD_L
 ClientSampleId :



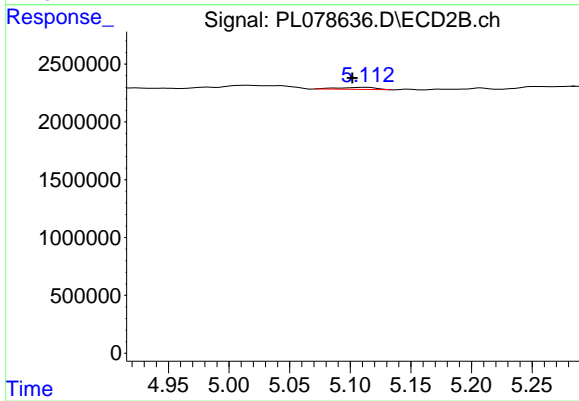
#12 4,4'-DDE

R.T.: 0.000 min
 Exp R.T. : 4.982 min
 Response: 0
 Conc: N.D.



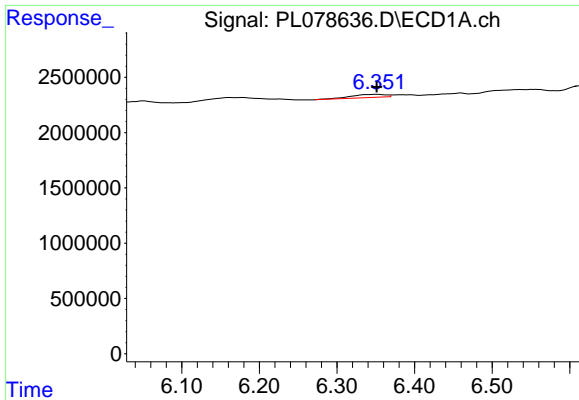
#13 Dieldrin

R.T.: 0.000 min
 Exp R.T. : 6.121 min
 Response: 0
 Conc: N.D.



#13 Dieldrin

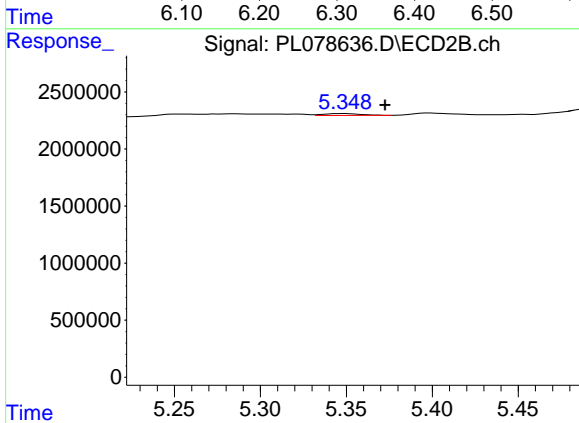
R.T.: 5.113 min
 Delta R.T.: 0.011 min
 Response: 392878
 Conc: 0.13 ng/ml



#14 Endrin

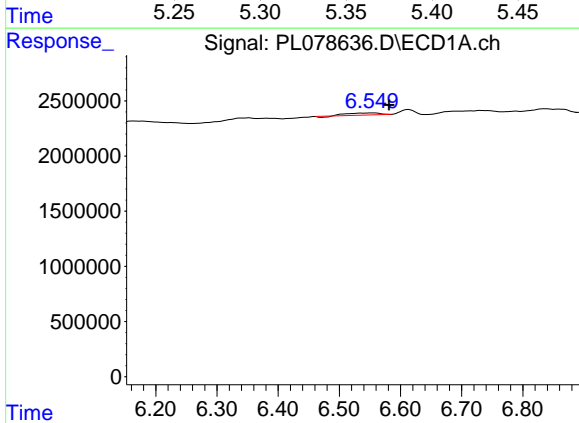
R.T.: 6.352 min
 Delta R.T.: 0.000 min
 Response: 857671
 Conc: 0.45 ng/ml

Instrument :
 ECD_L
 ClientSampleId :



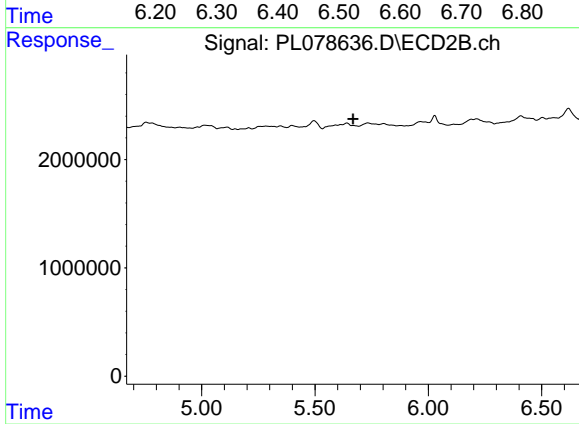
#14 Endrin

R.T.: 5.349 min
 Delta R.T.: -0.024 min
 Response: 250753
 Conc: 0.10 ng/ml



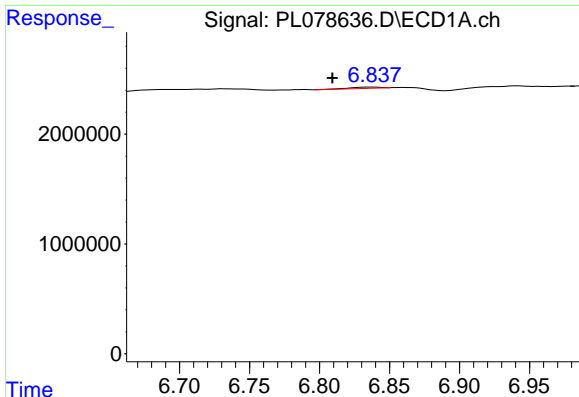
#15 Endosulfan II

R.T.: 6.553 min
 Delta R.T.: -0.028 min
 Response: 626191
 Conc: 0.33 ng/ml



#15 Endosulfan II

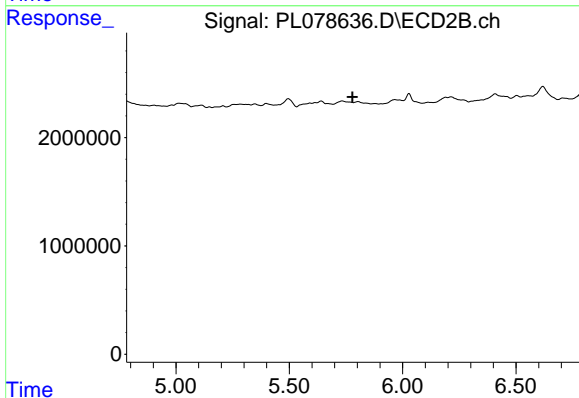
R.T.: 0.000 min
 Exp R.T. : 5.669 min
 Response: 0
 Conc: N.D.



#17 4,4'-DDT

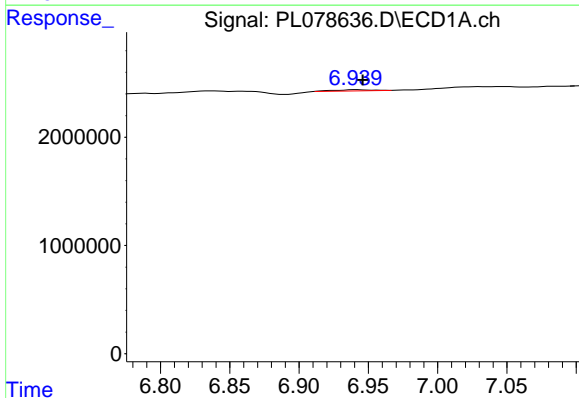
R.T.: 6.838 min
 Delta R.T.: 0.029 min
 Response: 179075
 Conc: 0.10 ng/ml

Instrument :
 ECD_L
 ClientSampleId :



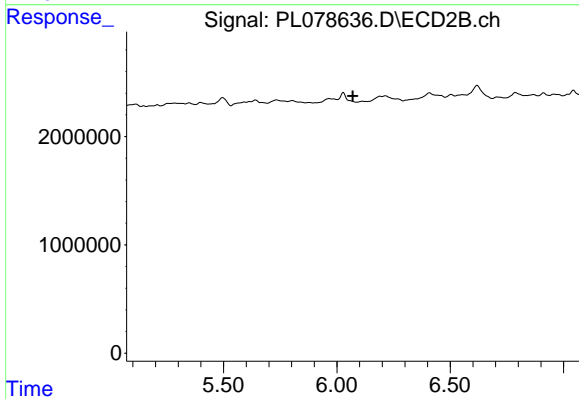
#17 4,4'-DDT

R.T.: 0.000 min
 Exp R.T. : 5.779 min
 Response: 0
 Conc: N.D.



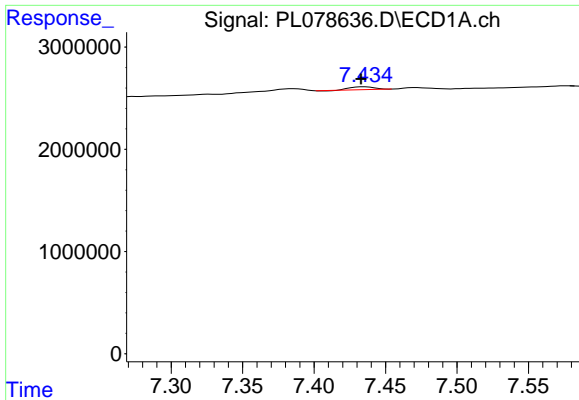
#19 Endosulfan Sulfate

R.T.: 6.941 min
 Delta R.T.: -0.005 min
 Response: 207967
 Conc: 0.11 ng/ml



#19 Endosulfan Sulfate

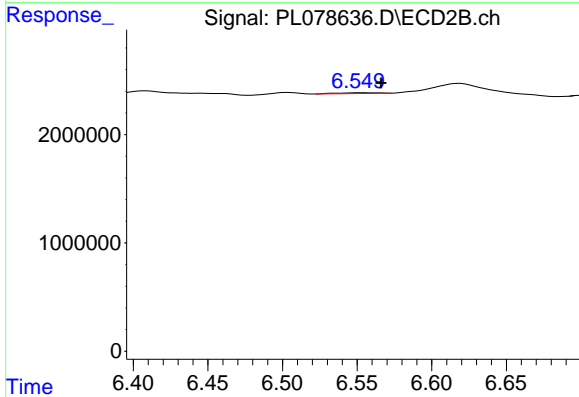
R.T.: 0.000 min
 Exp R.T. : 6.069 min
 Response: 0
 Conc: N.D.



#21 Endrin ketone

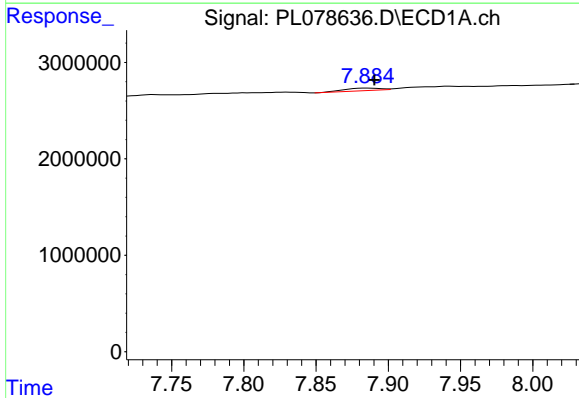
R.T.: 7.436 min
 Delta R.T.: 0.003 min
 Response: 315024
 Conc: 0.17 ng/ml

Instrument :
 ECD_L
 ClientSampleId :



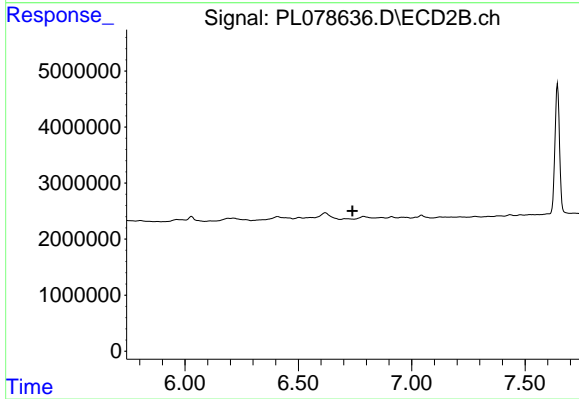
#21 Endrin ketone

R.T.: 6.552 min
 Delta R.T.: -0.014 min
 Response: 137945
 Conc: 0.05 ng/ml



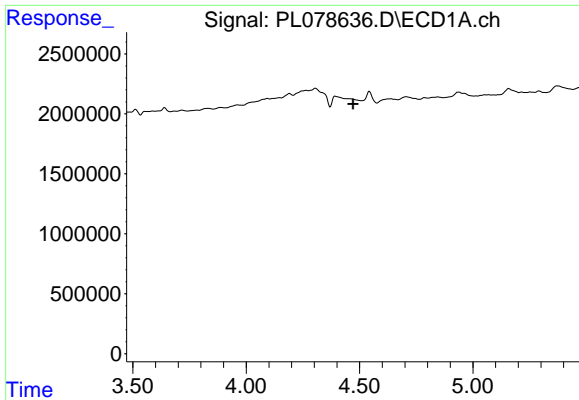
#22 Mirex

R.T.: 7.885 min
 Delta R.T.: -0.005 min
 Response: 452777
 Conc: 0.31 ng/ml



#22 Mirex

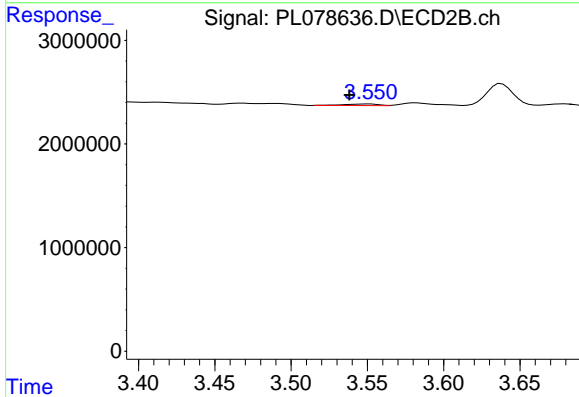
R.T.: 0.000 min
 Exp R.T. : 6.739 min
 Response: 0
 Conc: N.D.



#23 Chlordane-1

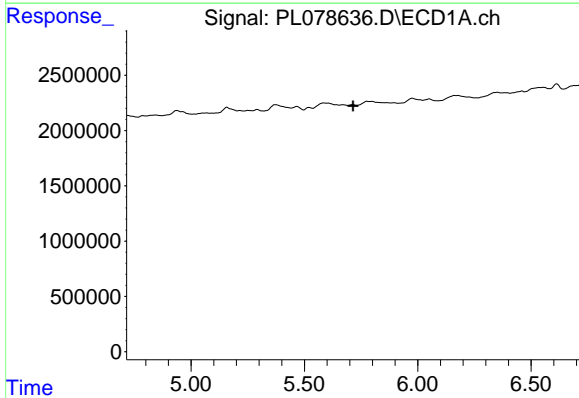
R.T.: 0.000 min
 Exp R.T. : 4.472 min
 Response: 0
 Conc: N.D.

Instrument :
 ECD_L
 ClientSampleId :



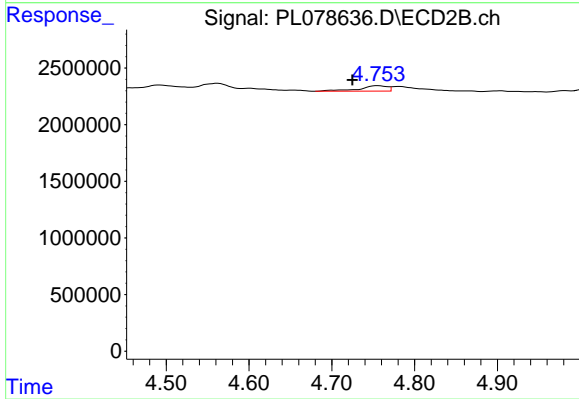
#23 Chlordane-1

R.T.: 3.551 min
 Delta R.T.: 0.013 min
 Response: 243977
 Conc: 2.42 ng/ml



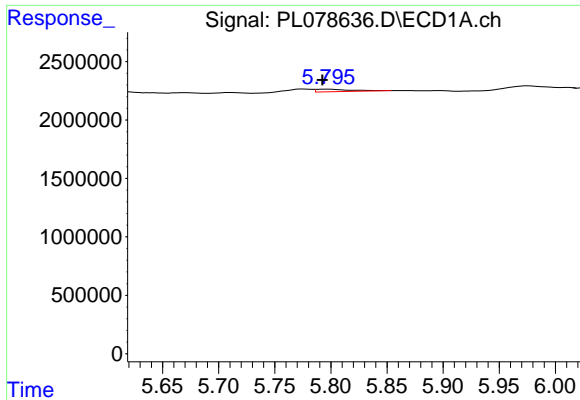
#25 Chlordane-3

R.T.: 0.000 min
 Exp R.T. : 5.715 min
 Response: 0
 Conc: N.D.



#25 Chlordane-3

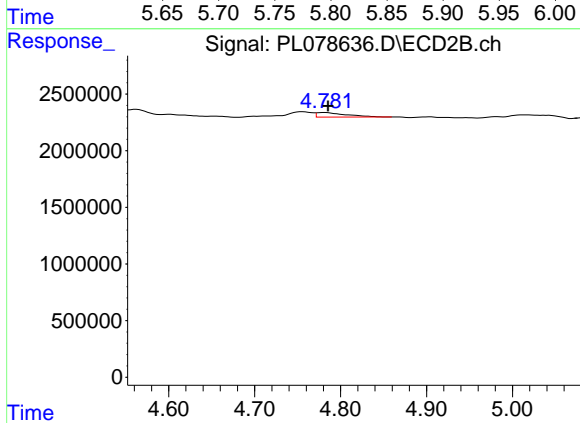
R.T.: 4.755 min
 Delta R.T.: 0.030 min
 Response: 1159991
 Conc: 3.81 ng/ml



#26 Chlordane-4

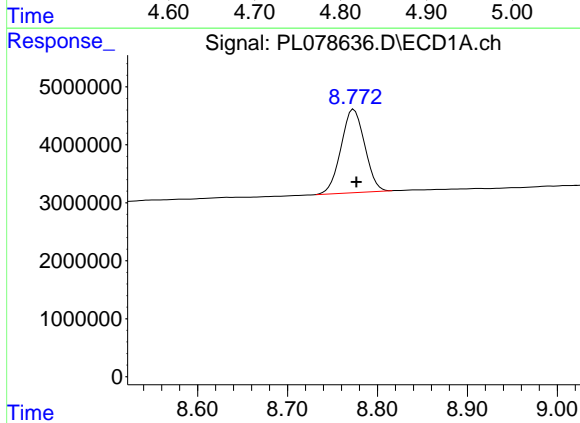
R.T.: 5.797 min
 Delta R.T.: 0.005 min
 Response: 458726
 Conc: 1.12 ng/ml

Instrument :
 ECD_L
 ClientSampleId :



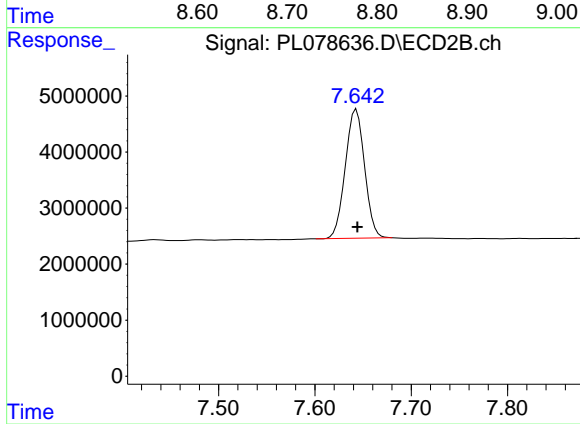
#26 Chlordane-4

R.T.: 4.782 min
 Delta R.T.: -0.003 min
 Response: 974694
 Conc: 2.98 ng/ml



#28 Decachlorobiphenyl

R.T.: 8.774 min
 Delta R.T.: -0.003 min
 Response: 26332689
 Conc: 17.50 ng/ml



#28 Decachlorobiphenyl

R.T.: 7.643 min
 Delta R.T.: -0.001 min
 Response: 31963494
 Conc: 16.88 ng/ml