

Data Path : Z:\pestpcbsrv\HPCHEM1\ECD_L\Data\PL103020\
 Data File : PL062731.D
 Signal(s) : Signal #1: ECD1A.ch Signal #2: ECD2B.ch
 Acq On : 30 Oct 2020 17:28
 Operator : DD\AJ
 Sample : PEM
 Misc :
 ALS Vial : 3 Sample Multiplier: 1

Instrument :
 ECD_L
 ClientSampleId :
 PEM

Integration File signal 1: autoint1.e
 Integration File signal 2: autoint2.e
 Quant Time: Oct 31 01:42:20 2020
 Quant Method : Z:\pestpcbsrv\HPCHEM1\ECD_L\methods\PL102120.M
 Quant Title : GC Extractables
 QLast Update : Thu Oct 22 04:25:31 2020
 Response via : Initial Calibration
 Integrator: ChemStation

Volume Inj. : 1 µl
 Signal #1 Phase : ZB-MR2 Signal #2 Phase: ZB-MR1
 Signal #1 Info : 30M x 0.32mm x0.2 Signal #2 Info : 30M x 0.32mm x0.5µm

	Compound	RT#1	RT#2	Resp#1	Resp#2	ng/ml	ng/ml

System Monitoring Compounds							
1)	SA Tetrachlo...	3.412	3.951	37344036	59393540	21.711	20.211
28)	SA Decachlor...	8.127	8.991	34583602	45788635	21.557	21.877
Target Compounds							
2)	A alpha-BHC	3.844	4.337	22881790	40179070	8.974	9.043
3)	MA gamma-BHC...	4.123	4.620	18542309	35274629	8.004	8.448
6)	B beta-BHC	4.372	4.792	9369339	17481787	9.809	9.284
14)	MA Endrin	5.934	6.643	65990513	103.9E6	39.663	37.223
15)	B Endosulfa...	0.000	6.866	0	1820870	N.D.	0.637 #
16)	A 4,4'-DDD	6.063	6.769	14909639	25977915	10.541	10.148
17)	MA 4,4'-DDT	6.302	7.067	103.1E6	164.8E6	77.287	73.417
18)	B Endrin al...	6.373	6.977	2060984	3206055	1.419	1.406
20)	A Methoxychlor	6.845	7.527	152.6E6	226.1E6	177.222	182.983
21)	B Endrin ke...	7.070	7.669	8591583	10208842	4.765	4.308

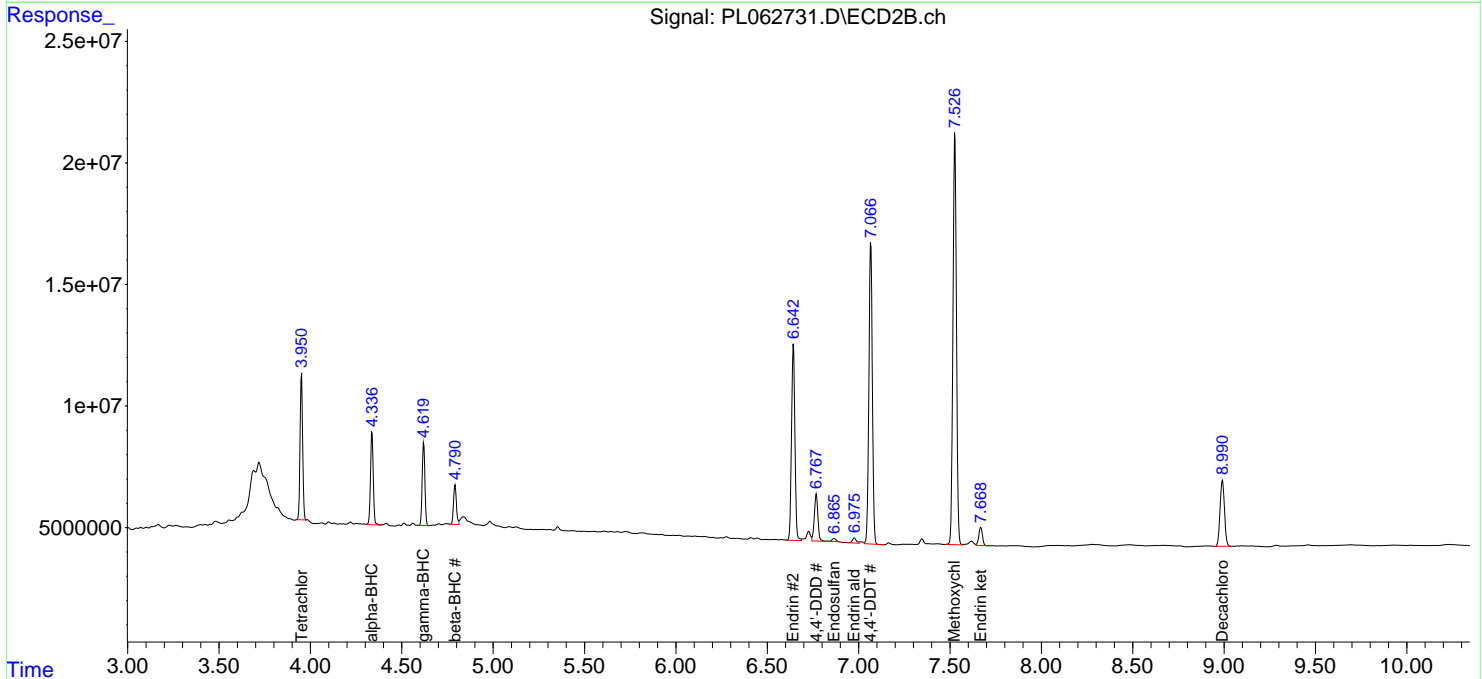
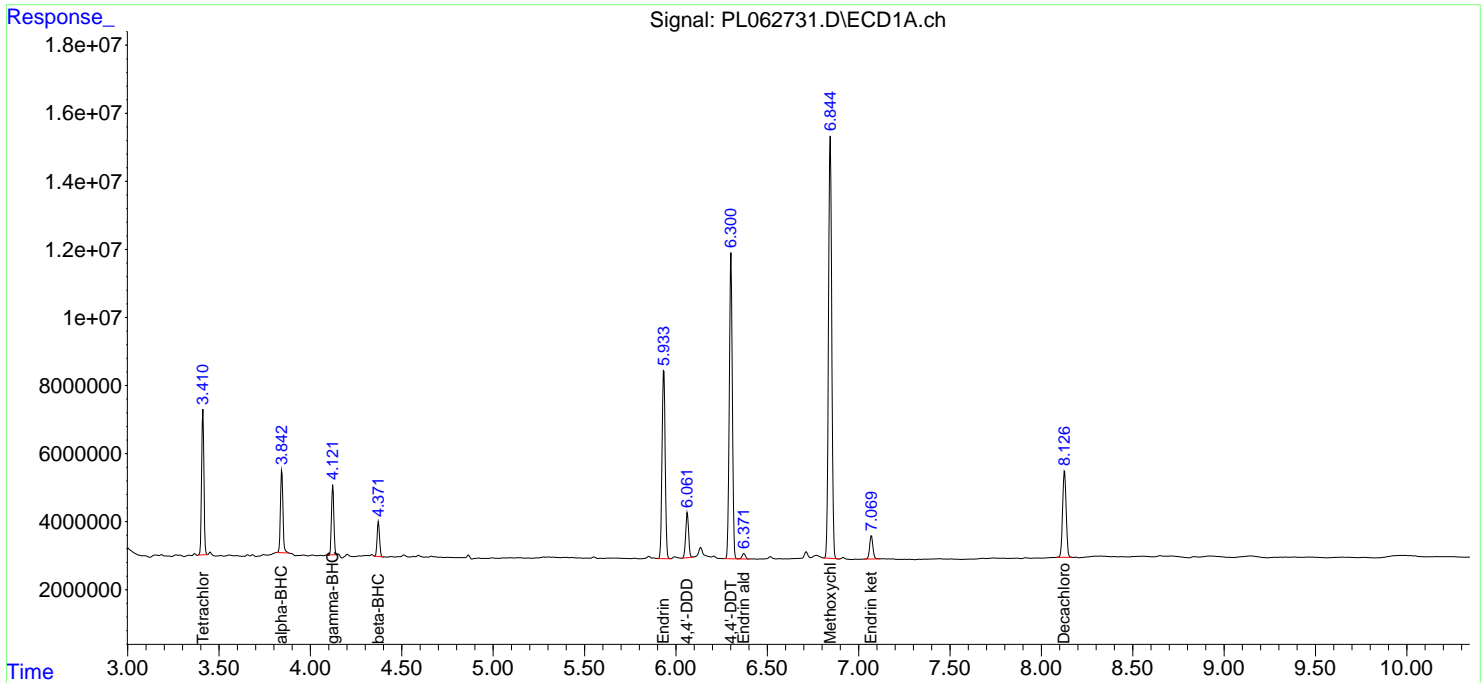
(f)=RT Delta > 1/2 Window (#)=Amounts differ by > 25% (m)=manual int.

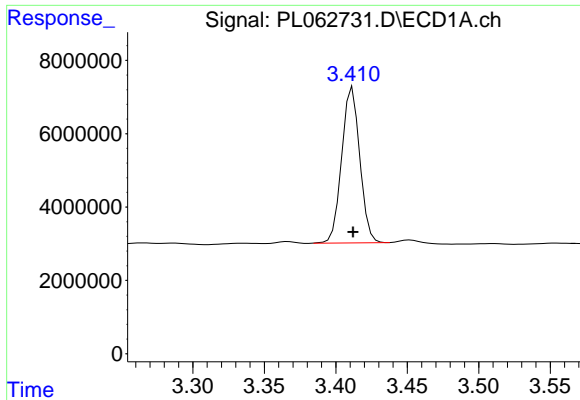
Data Path : Z:\pestpcbsrv\HPCHEM1\ECD_L\Data\PL103020\
 Data File : PL062731.D
 Signal(s) : Signal #1: ECD1A.ch Signal #2: ECD2B.ch
 Acq On : 30 Oct 2020 17:28
 Operator : DD\AJ
 Sample : PEM
 Misc :
 ALS Vial : 3 Sample Multiplier: 1

Instrument :
 ECD_L
 ClientSampled :
 PEM

Integration File signal 1: autoint1.e
 Integration File signal 2: autoint2.e
 Quant Time: Oct 31 01:42:20 2020
 Quant Method : Z:\pestpcbsrv\HPCHEM1\ECD_L\methods\PL102120.M
 Quant Title : GC Extractables
 QLast Update : Thu Oct 22 04:25:31 2020
 Response via : Initial Calibration
 Integrator: ChemStation

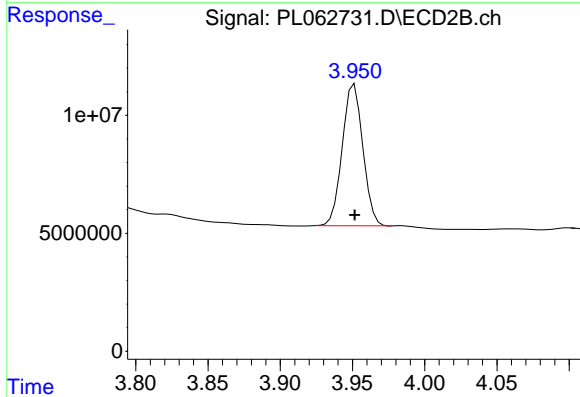
Volume Inj. : 1 µl
 Signal #1 Phase : ZB-MR2 Signal #2 Phase: ZB-MR1
 Signal #1 Info : 30M x 0.32mm x0.2 Signal #2 Info : 30M x 0.32mm x0.5µm



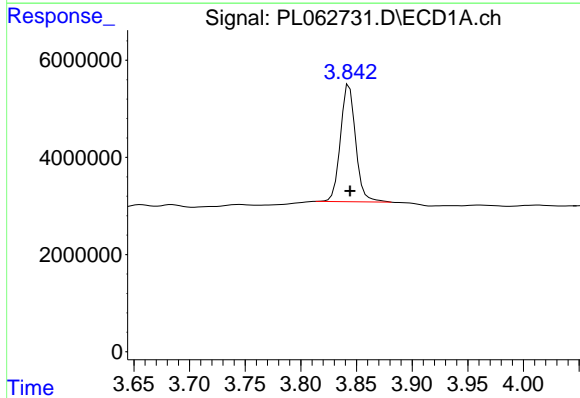


#1 Tetrachloro-m-xylene
 R.T.: 3.412 min
 Delta R.T.: 0.000 min
 Response: 37344036
 Conc: 21.71 ng/ml

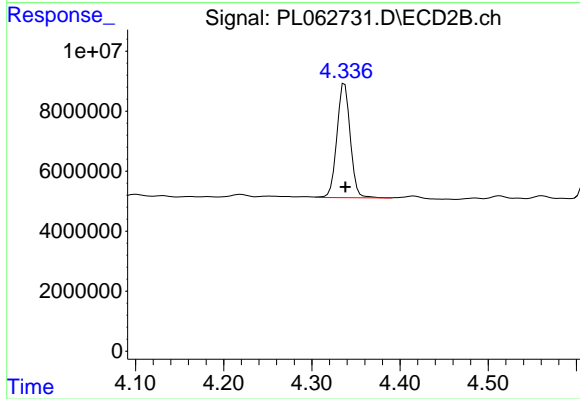
Instrument :
 ECD_L
 ClientSampleId :
 PEM



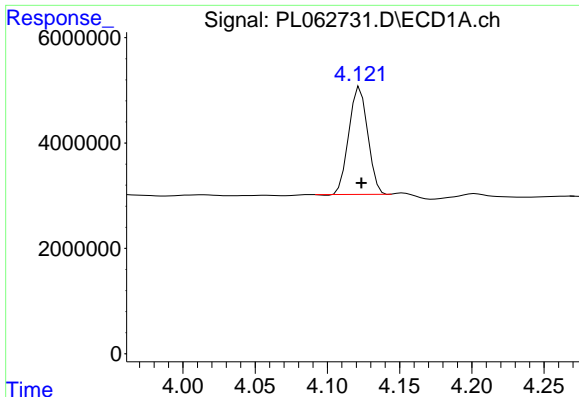
#1 Tetrachloro-m-xylene
 R.T.: 3.951 min
 Delta R.T.: 0.000 min
 Response: 59393540
 Conc: 20.21 ng/ml



#2 alpha-BHC
 R.T.: 3.844 min
 Delta R.T.: 0.000 min
 Response: 22881790
 Conc: 8.97 ng/ml



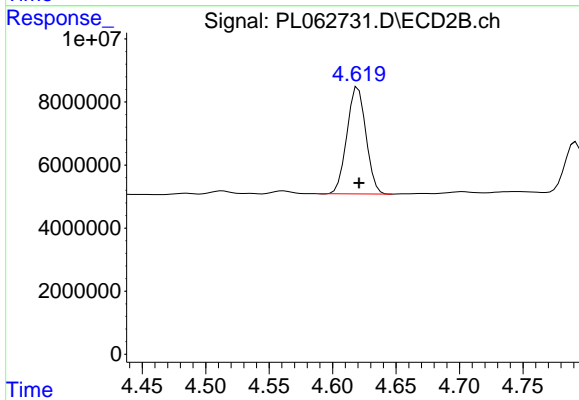
#2 alpha-BHC
 R.T.: 4.337 min
 Delta R.T.: 0.000 min
 Response: 40179070
 Conc: 9.04 ng/ml



#3 gamma-BHC (Lindane)

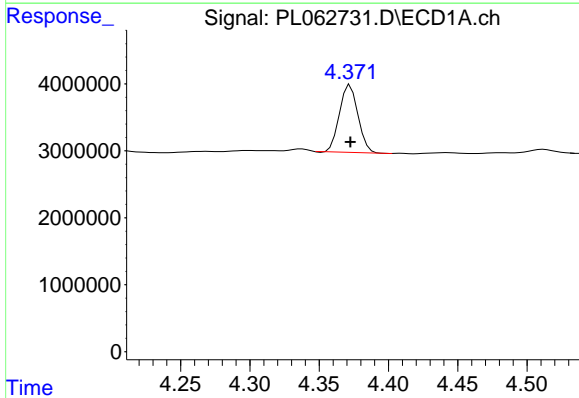
R.T.: 4.123 min
 Delta R.T.: 0.000 min
 Response: 18542309
 Conc: 8.00 ng/ml

Instrument :
 ECD_L
 ClientSampled :
 PEM



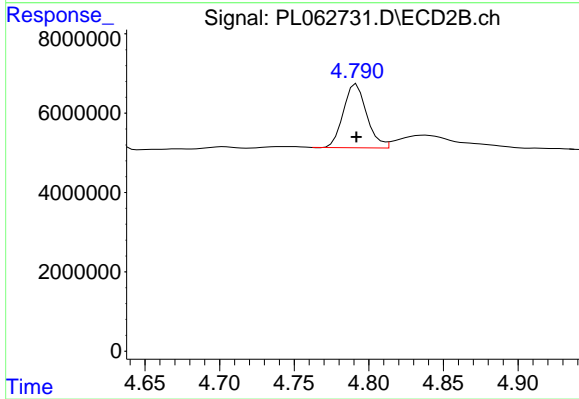
#3 gamma-BHC (Lindane)

R.T.: 4.620 min
 Delta R.T.: 0.000 min
 Response: 35274629
 Conc: 8.45 ng/ml



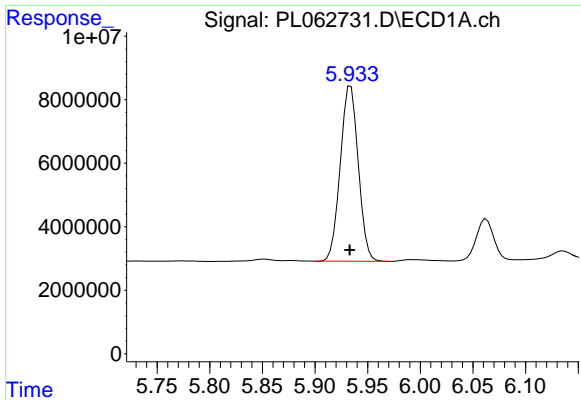
#6 beta-BHC

R.T.: 4.372 min
 Delta R.T.: 0.000 min
 Response: 9369339
 Conc: 9.81 ng/ml



#6 beta-BHC

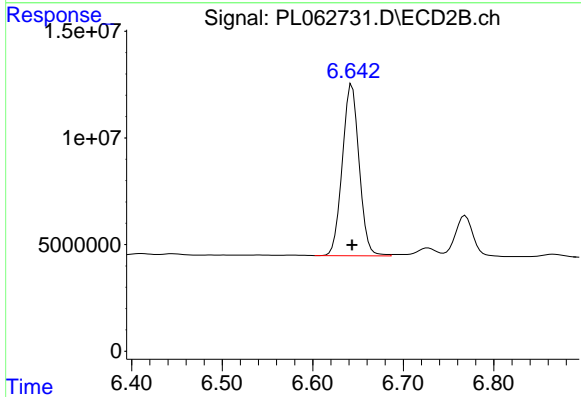
R.T.: 4.792 min
 Delta R.T.: 0.000 min
 Response: 17481787
 Conc: 9.28 ng/ml



#14 Endrin

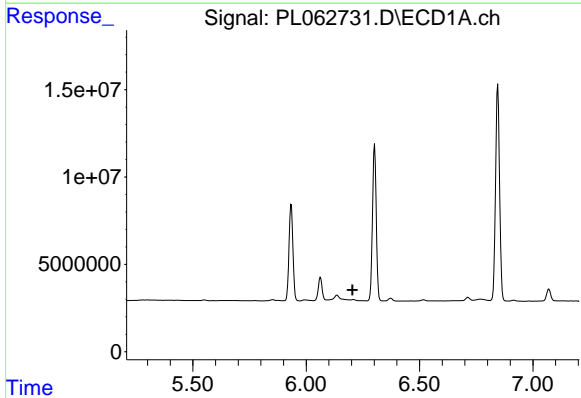
R.T.: 5.934 min
 Delta R.T.: 0.000 min
 Response: 65990513
 Conc: 39.66 ng/ml

Instrument :
 ECD_L
 ClientSampled :
 PEM



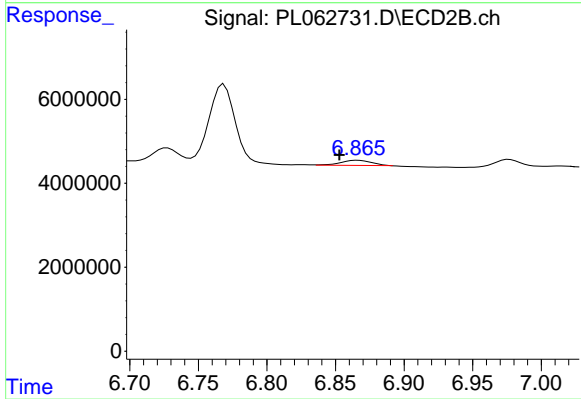
#14 Endrin

R.T.: 6.643 min
 Delta R.T.: 0.000 min
 Response: 103893774
 Conc: 37.22 ng/ml



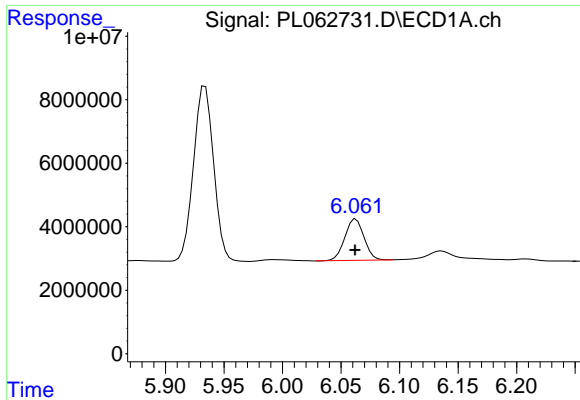
#15 Endosulfan II

R.T.: 0.000 min
 Exp R.T. : 6.205 min
 Response: 0
 Conc: N.D.



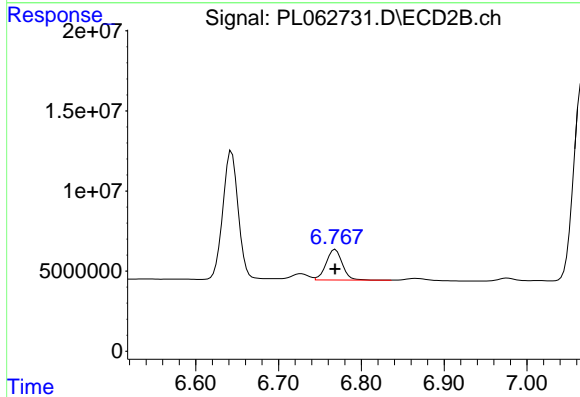
#15 Endosulfan II

R.T.: 6.866 min
 Delta R.T.: 0.014 min
 Response: 1820870
 Conc: 0.64 ng/ml

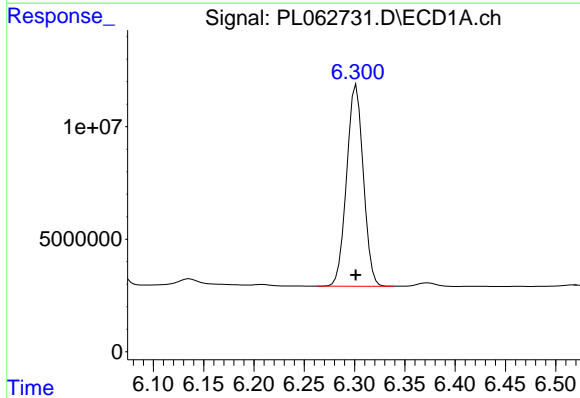


#16 4,4'-DDD
R.T.: 6.063 min
Delta R.T.: 0.000 min
Response: 14909639
Conc: 10.54 ng/ml

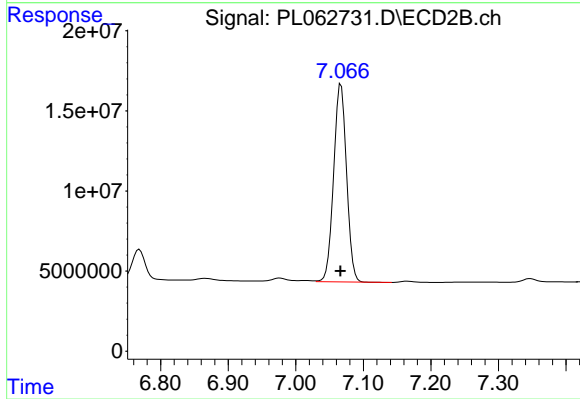
Instrument :
ECD_L
ClientSampled :
PEM



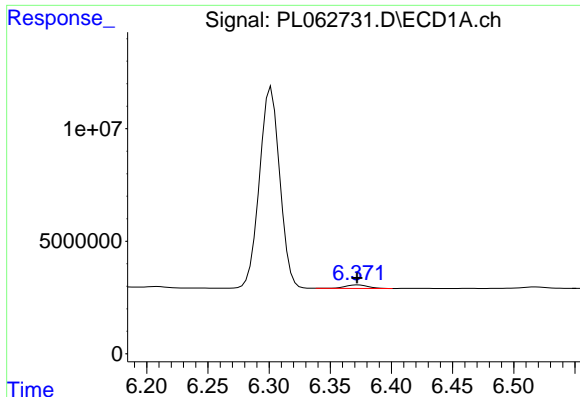
#16 4,4'-DDD
R.T.: 6.769 min
Delta R.T.: 0.000 min
Response: 25977915
Conc: 10.15 ng/ml



#17 4,4'-DDT
R.T.: 6.302 min
Delta R.T.: 0.000 min
Response: 103144032
Conc: 77.29 ng/ml



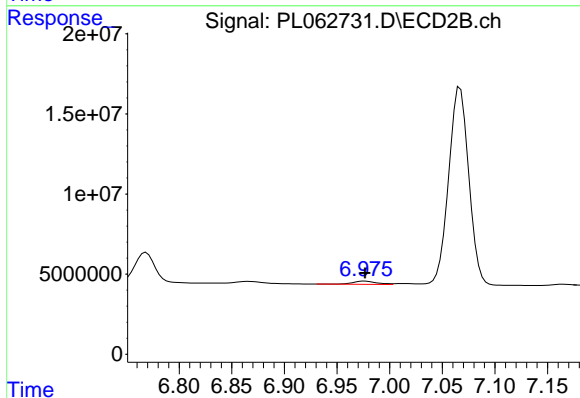
#17 4,4'-DDT
R.T.: 7.067 min
Delta R.T.: 0.000 min
Response: 164839324
Conc: 73.42 ng/ml



#18 Endrin aldehyde

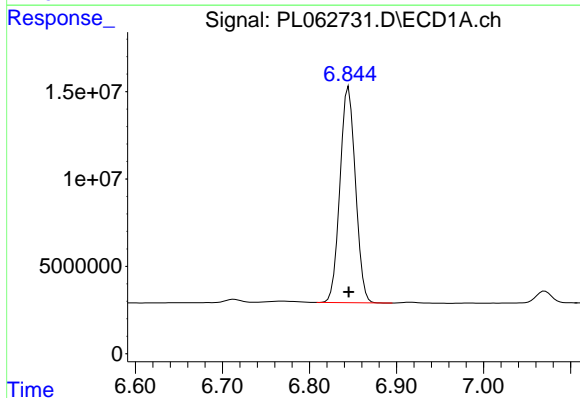
R.T.: 6.373 min
 Delta R.T.: 0.000 min
 Response: 2060984
 Conc: 1.42 ng/ml

Instrument :
 ECD_L
 ClientSampled :
 PEM



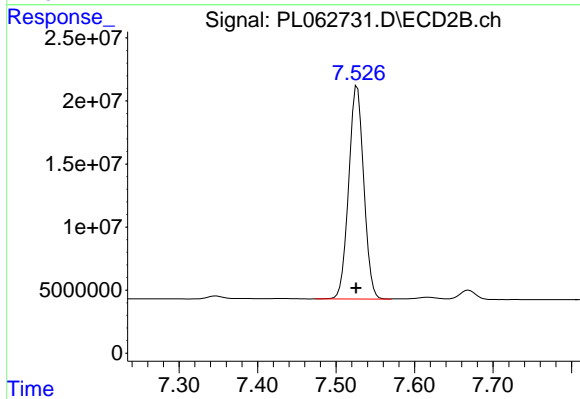
#18 Endrin aldehyde

R.T.: 6.977 min
 Delta R.T.: 0.000 min
 Response: 3206055
 Conc: 1.41 ng/ml



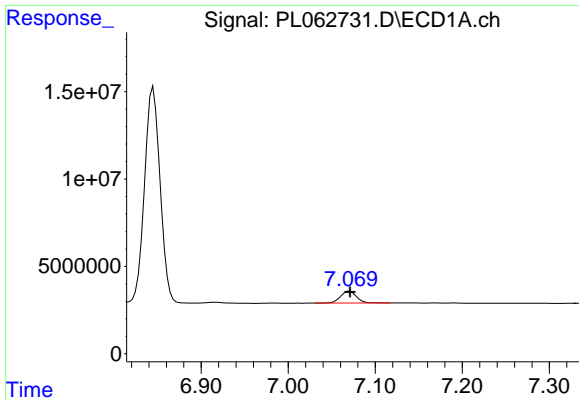
#20 Methoxychlor

R.T.: 6.845 min
 Delta R.T.: 0.000 min
 Response: 152640606
 Conc: 177.22 ng/ml



#20 Methoxychlor

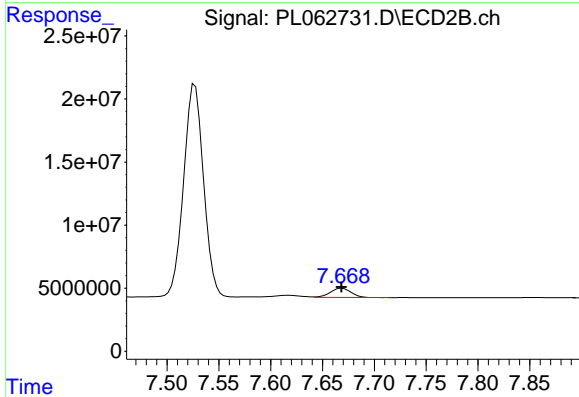
R.T.: 7.527 min
 Delta R.T.: 0.001 min
 Response: 226076132
 Conc: 182.98 ng/ml



#21 Endrin ketone

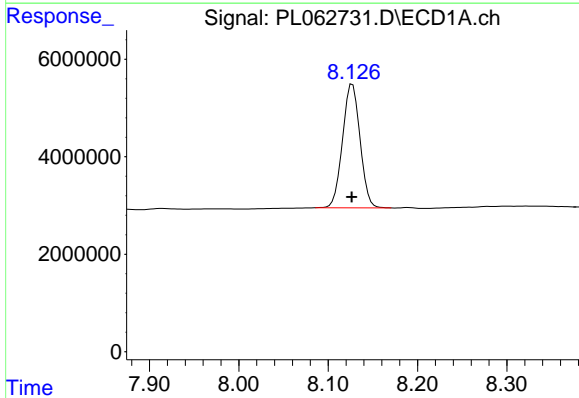
R.T.: 7.070 min
 Delta R.T.: 0.000 min
 Response: 8591583
 Conc: 4.77 ng/ml

Instrument :
 ECD_L
 ClientSampled :
 PEM



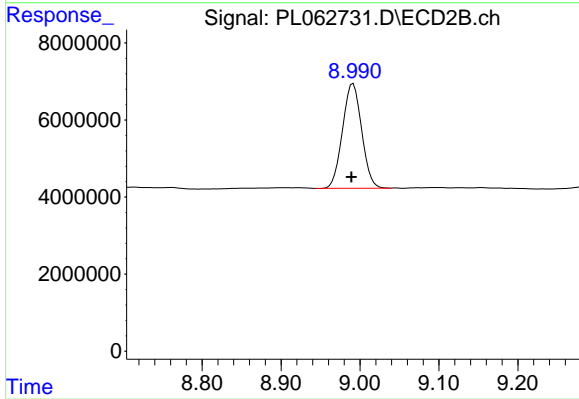
#21 Endrin ketone

R.T.: 7.669 min
 Delta R.T.: 0.000 min
 Response: 10208842
 Conc: 4.31 ng/ml



#28 Decachlorobiphenyl

R.T.: 8.127 min
 Delta R.T.: 0.000 min
 Response: 34583602
 Conc: 21.56 ng/ml



#28 Decachlorobiphenyl

R.T.: 8.991 min
 Delta R.T.: 0.002 min
 Response: 45788635
 Conc: 21.88 ng/ml