

Data Path : Z:\pestpcbsrv\HPCHEM1\ECD_L\Data\PL103020\
 Data File : PL062734.D
 Signal(s) : Signal #1: ECD1A.ch Signal #2: ECD2B.ch
 Acq On : 30 Oct 2020 18:11
 Operator : DD\AJ
 Sample : PB132739BL
 Misc :
 ALS Vial : 26 Sample Multiplier: 1

Instrument :
 ECD_L
 ClientSampleId :

Integration File signal 1: autoint1.e
 Integration File signal 2: autoint2.e
 Quant Time: Oct 31 01:43:15 2020
 Quant Method : Z:\pestpcbsrv\HPCHEM1\ECD_L\methods\PL102120.M
 Quant Title : GC Extractables
 QLast Update : Thu Oct 22 04:25:31 2020
 Response via : Initial Calibration
 Integrator: ChemStation

Volume Inj. : 1 µl
 Signal #1 Phase : ZB-MR2 Signal #2 Phase: ZB-MR1
 Signal #1 Info : 30M x 0.32mm x0.2 Signal #2 Info : 30M x 0.32mm x0.5µm

Compound	RT#1	RT#2	Resp#1	Resp#2	ng/ml	ng/ml

System Monitoring Compounds						
1) SA Tetrachlo...	3.412	3.951	35193006	61652618	20.460	20.979
28) SA Decachlor...	8.126	8.991	35164320	49298918	21.919	23.555
Target Compounds						
15) B Endosulfa...	0.000	6.869f	0	2611354	N.D.	0.913 #

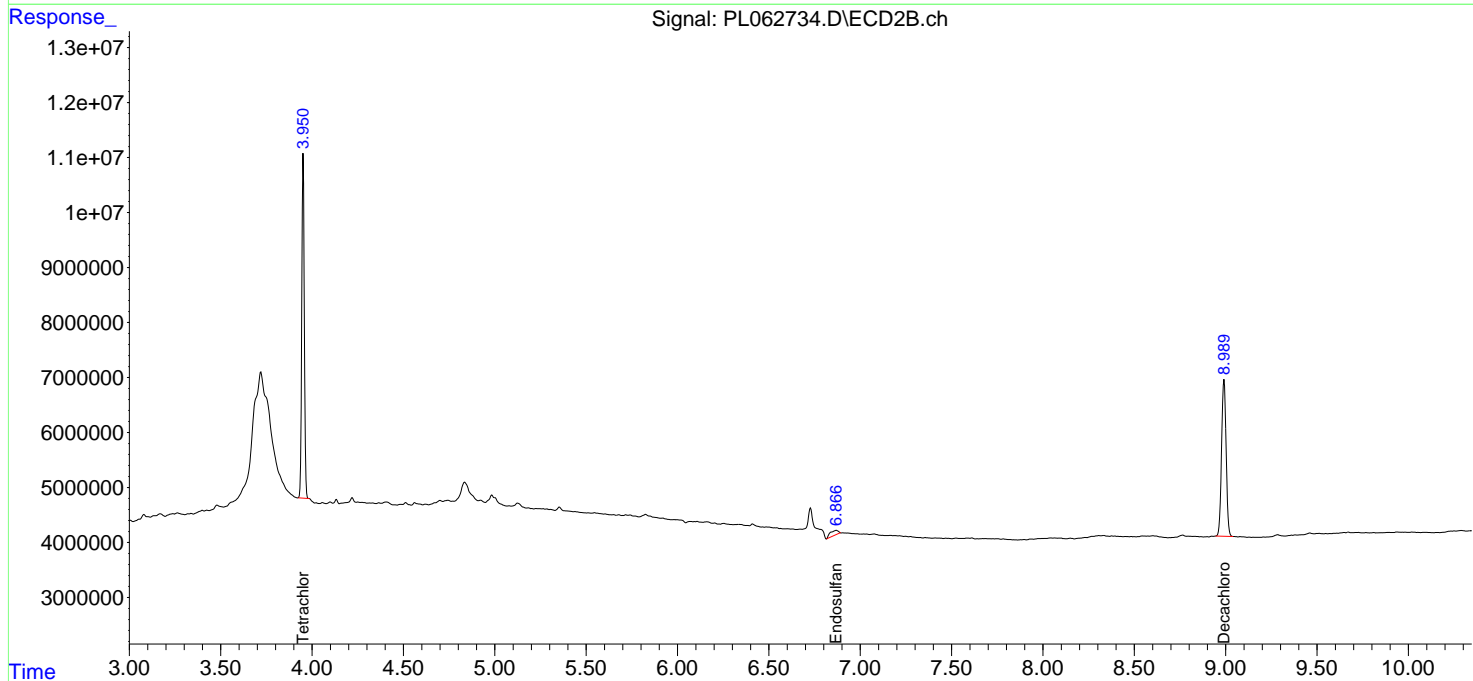
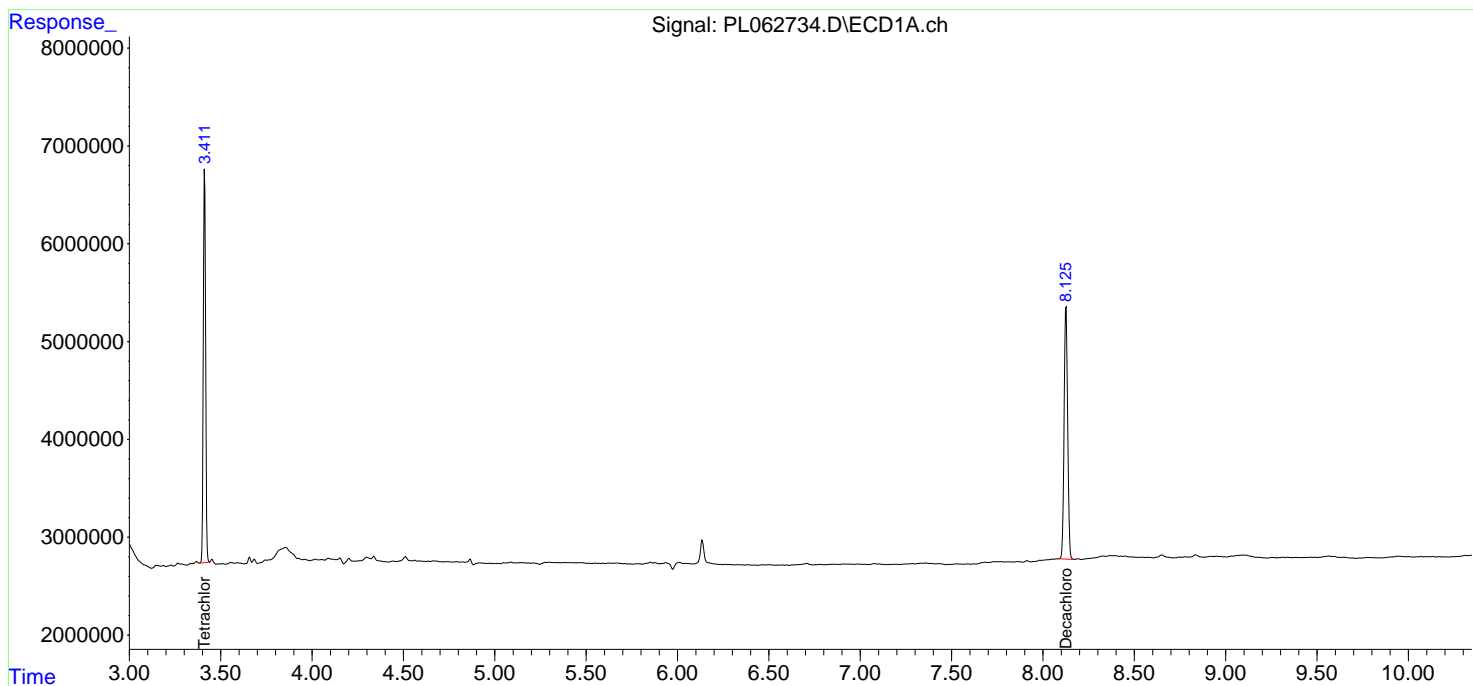
(f)=RT Delta > 1/2 Window (#)=Amounts differ by > 25% (m)=manual int.

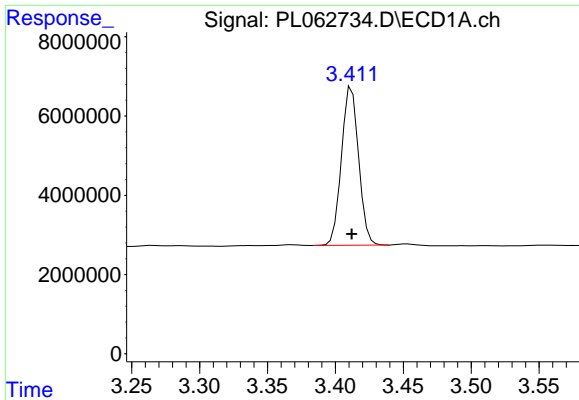
Data Path : Z:\pestpcbsrv\HPCHEM1\ECD_L\Data\PL103020\
Data File : PL062734.D
Signal(s) : Signal #1: ECD1A.ch Signal #2: ECD2B.ch
Acq On : 30 Oct 2020 18:11
Operator : DD\AJ
Sample : PB132739BL
Misc :
ALS Vial : 26 Sample Multiplier: 1

Instrument :
ECD_L
ClientSampled :

Integration File signal 1: autoint1.e
Integration File signal 2: autoint2.e
Quant Time: Oct 31 01:43:15 2020
Quant Method : Z:\pestpcbsrv\HPCHEM1\ECD_L\methods\PL102120.M
Quant Title : GC Extractables
QLast Update : Thu Oct 22 04:25:31 2020
Response via : Initial Calibration
Integrator: ChemStation

Volume Inj. : 1 µl
Signal #1 Phase : ZB-MR2 Signal #2 Phase: ZB-MR1
Signal #1 Info : 30M x 0.32mm x0.2 Signal #2 Info : 30M x 0.32mm x0.5µm





#1 Tetrachloro-m-xylene

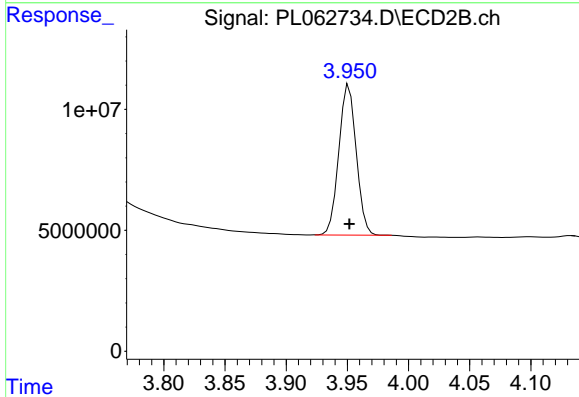
R.T.: 3.412 min

Delta R.T.: 0.000 min

Response: 35193006

Conc: 20.46 ng/ml

Instrument :
ECD_L
ClientSampled :



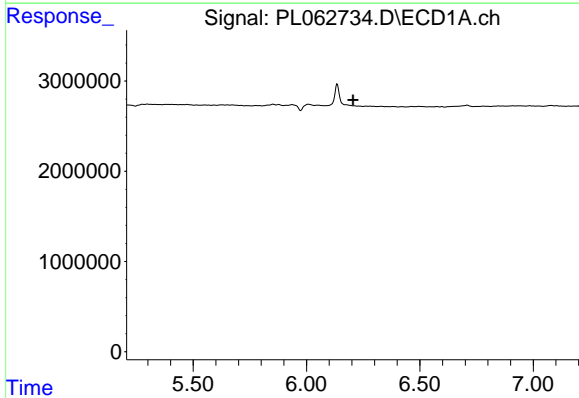
#1 Tetrachloro-m-xylene

R.T.: 3.951 min

Delta R.T.: 0.000 min

Response: 61652618

Conc: 20.98 ng/ml



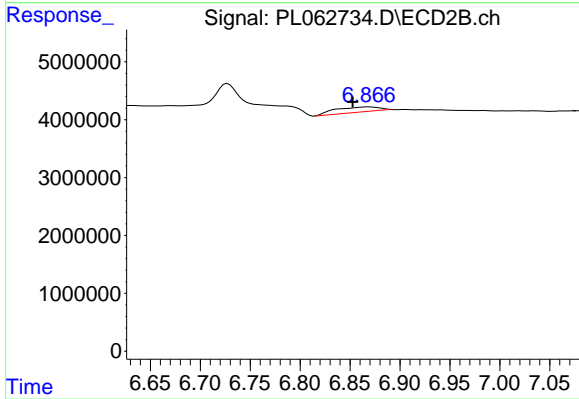
#15 Endosulfan II

R.T.: 0.000 min

Exp R.T. : 6.205 min

Response: 0

Conc: N.D.



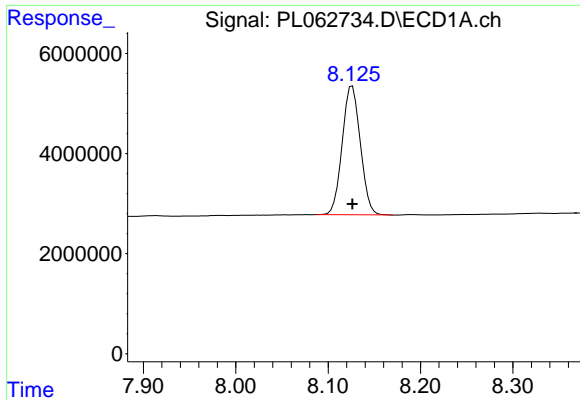
#15 Endosulfan II

R.T.: 6.869 min

Delta R.T.: 0.016 min

Response: 2611354

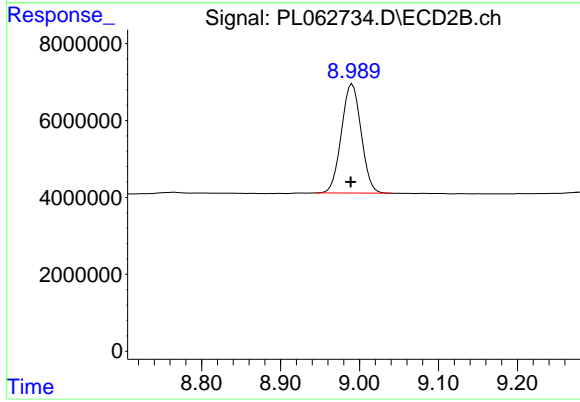
Conc: 0.91 ng/ml



#28 Decachlorobiphenyl

R.T.: 8.126 min
Delta R.T.: 0.000 min
Response: 35164320
Conc: 21.92 ng/ml

Instrument :
ECD_L
ClientSampleId :



#28 Decachlorobiphenyl

R.T.: 8.991 min
Delta R.T.: 0.002 min
Response: 49298918
Conc: 23.55 ng/ml