

Data Path : Z:\pestpcbsrv\HPCHEM1\ECD\_L\Data\PL103020\  
 Data File : PL062728.D  
 Signal(s) : Signal #1: ECD1A.ch Signal #2: ECD2B.ch  
 Acq On : 30 Oct 2020 16:46  
 Operator : DD\AJ  
 Sample : L4565-01  
 Misc :  
 ALS Vial : 23 Sample Multiplier: 1

Instrument :  
 ECD\_L  
 ClientSampleId :  
 FK-GF-02-063-A

Manual Integrations  
 APPROVED

Ankita  
 11/2/2020 3:02:40 PM

Integration File signal 1: autoint1.e  
 Integration File signal 2: autoint2.e  
 Quant Time: Oct 30 17:29:17 2020  
 Quant Method : Z:\pestpcbsrv\HPCHEM1\ECD\_L\methods\PL102120.M  
 Quant Title : GC Extractables  
 QLast Update : Thu Oct 22 04:25:31 2020  
 Response via : Initial Calibration  
 Integrator: ChemStation

Volume Inj. : 1 µl  
 Signal #1 Phase : ZB-MR2 Signal #2 Phase: ZB-MR1  
 Signal #1 Info : 30M x 0.32mm x0.2 Signal #2 Info : 30M x 0.32mm x0.5µm

Compound	RT#1	RT#2	Resp#1	Resp#2	ng/ml	ng/ml
-----						
System Monitoring Compounds						
1) SA Tetrachlo...	3.412	3.951	36606469	63392043	21.282	21.571
28) SA Decachlor...	8.126	8.990	36717993	49891083	22.887	23.838
Target Compounds						
4) MA Heptachlor	4.420	5.125	3853406	6916263	1.796	1.734m
10) B gamma-Chl...	5.328	6.046	55437020	138.6E6	30.771m	41.177m#
11) B alpha-Chl...	5.385	6.120	66364559	190.6E6	36.711m	56.573m#
12) B 4,4'-DDE	5.551	6.276	11817269	27534578	7.143	8.546
16) A 4,4'-DDD	6.062	6.769	10162128	32680992	7.184m	12.766 #
17) MA 4,4'-DDT	6.302	7.066	38812295	68811881	29.082	30.648
-----						

(f)=RT Delta > 1/2 Window (#)=Amounts differ by > 25% (m)=manual int.

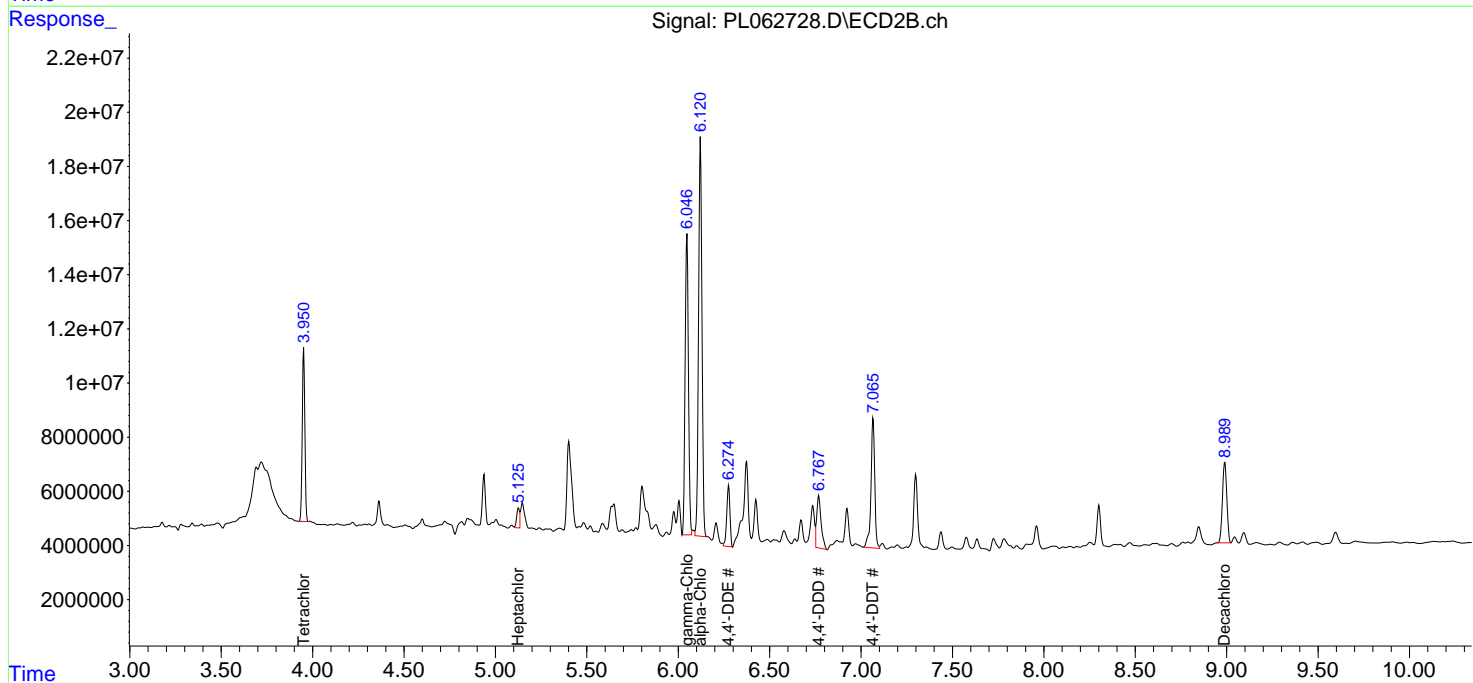
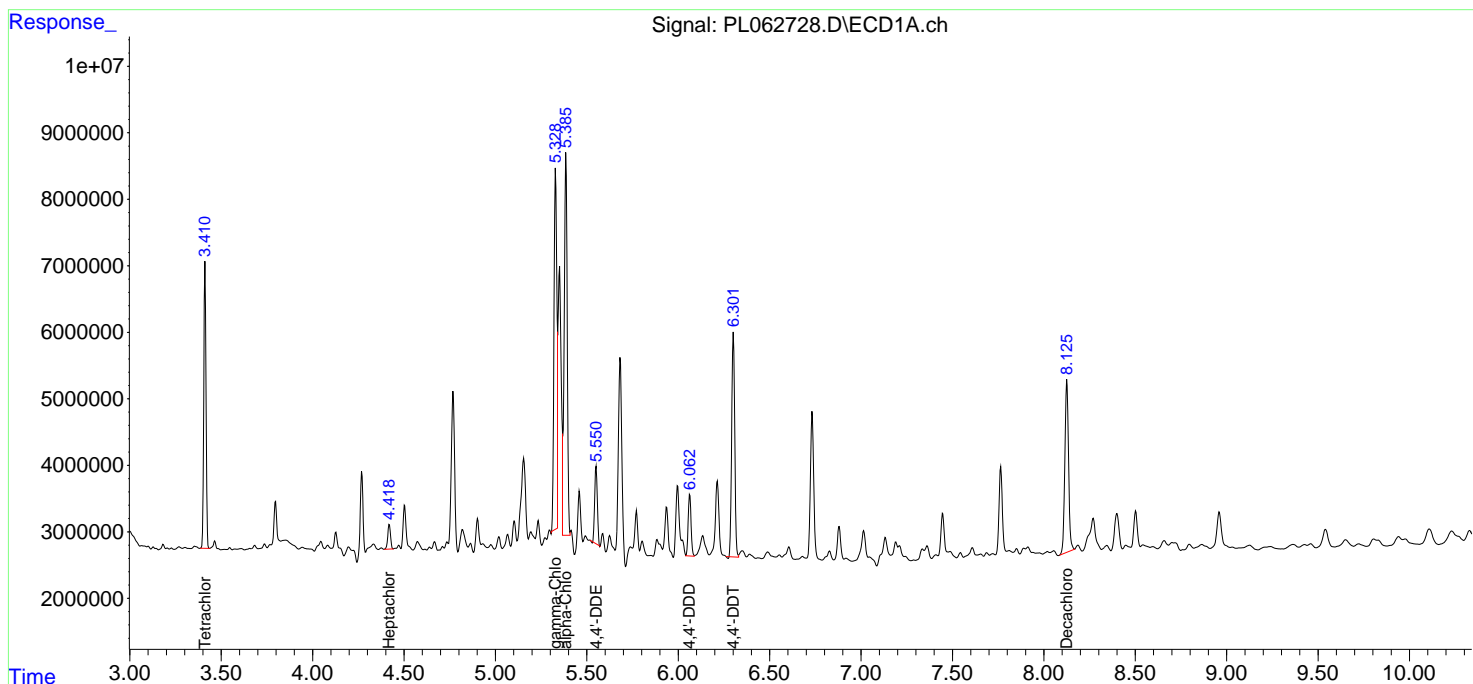
Data Path : Z:\pestpcbsrv\HPCHEM1\ECD\_L\Data\PL103020\  
 Data File : PL062728.D  
 Signal(s) : Signal #1: ECD1A.ch Signal #2: ECD2B.ch  
 Acq On : 30 Oct 2020 16:46  
 Operator : DD\AJ  
 Sample : L4565-01  
 Misc :  
 ALS Vial : 23 Sample Multiplier: 1

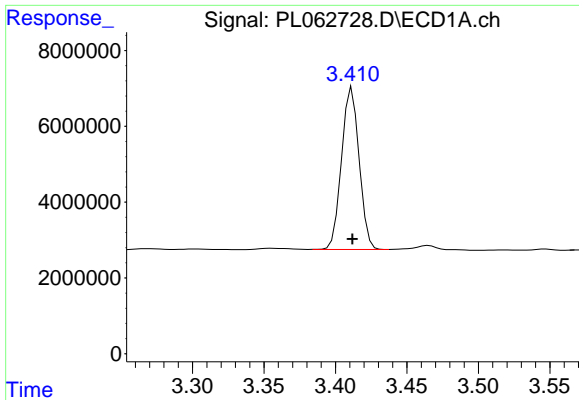
**Instrument :**  
 ECD\_L  
**Client Sampled :**  
 FK-GF-02-063-A

**Manual Integrations**  
**APPROVED**  
 Ankita  
 11/2/2020 3:02:40 PM

Integration File signal 1: autoint1.e  
 Integration File signal 2: autoint2.e  
 Quant Time: Oct 30 17:29:17 2020  
 Quant Method : Z:\pestpcbsrv\HPCHEM1\ECD\_L\methods\PL102120.M  
 Quant Title : GC Extractables  
 QLast Update : Thu Oct 22 04:25:31 2020  
 Response via : Initial Calibration  
 Integrator: ChemStation

Volume Inj. : 1 µl  
 Signal #1 Phase : ZB-MR2 Signal #2 Phase: ZB-MR1  
 Signal #1 Info : 30M x 0.32mm x0.2 Signal #2 Info : 30M x 0.32mm x0.5µm

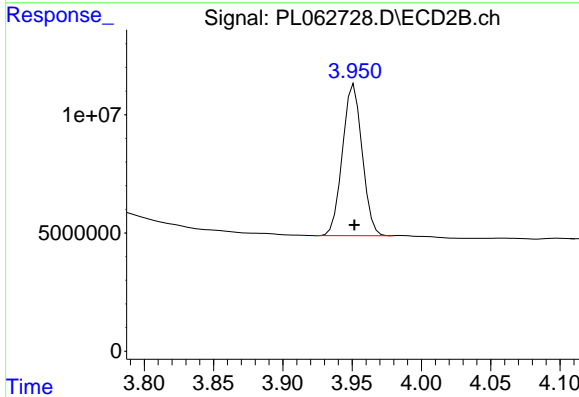




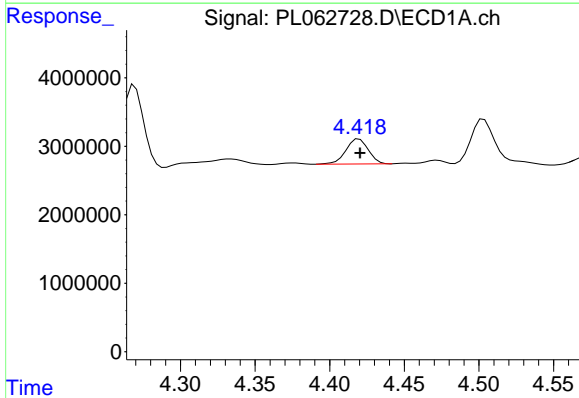
#1 Tetrachloro-m-xylene  
 R.T.: 3.412 min  
 Delta R.T.: 0.000 min  
 Response: 36606469  
 Conc: 21.28 ng/ml

Instrument :  
 ECD\_L  
 ClientSampleId :  
 FK-GF-02-063-A

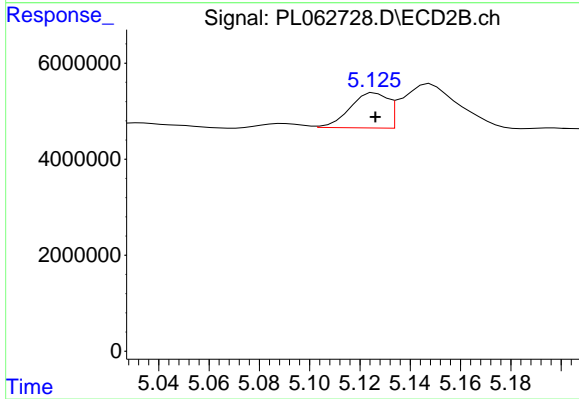
Manual Integrations  
 APPROVED  
 Ankita  
 11/2/2020 3:02:40 PM



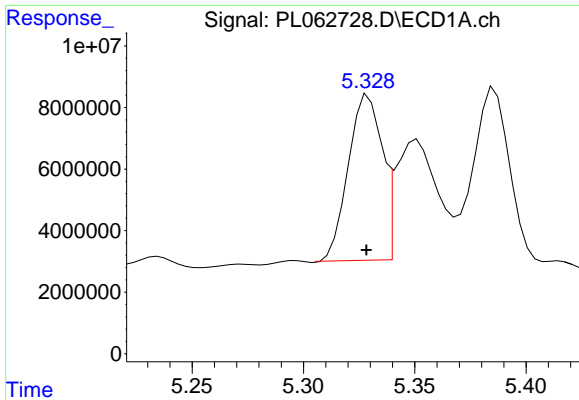
#1 Tetrachloro-m-xylene  
 R.T.: 3.951 min  
 Delta R.T.: 0.000 min  
 Response: 63392043  
 Conc: 21.57 ng/ml



#4 Heptachlor  
 R.T.: 4.420 min  
 Delta R.T.: 0.000 min  
 Response: 3853406  
 Conc: 1.80 ng/ml



#4 Heptachlor  
 R.T.: 5.125 min  
 Delta R.T.: -0.001 min  
 Response: 6916263  
 Conc: 1.73 ng/ml m



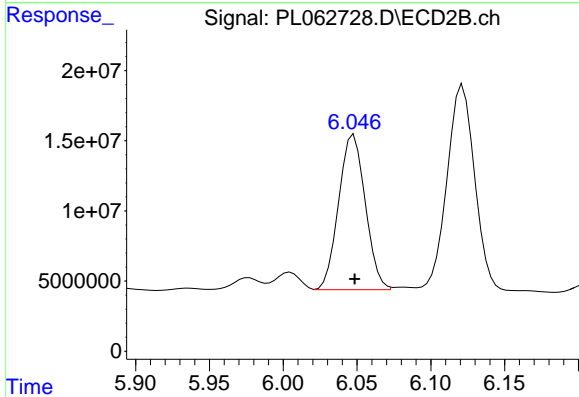
#10 gamma-Chlordane

R.T.: 5.328 min  
 Delta R.T.: 0.000 min  
 Response: 55437020  
 Conc: 30.77 ng/ml m

Instrument :  
 ECD\_L  
 ClientSampleId :  
 FK-GF-02-063-A

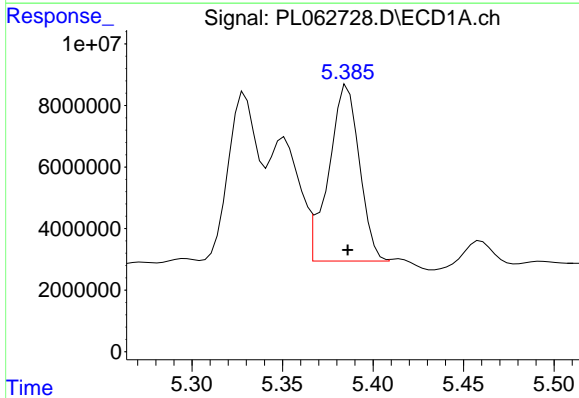
Manual Integrations  
 APPROVED

Ankita  
 11/2/2020 3:02:40 PM



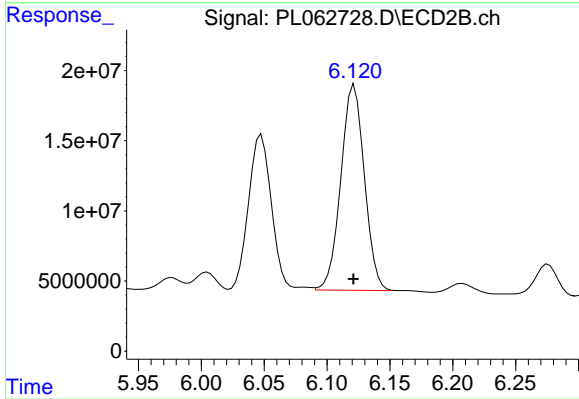
#10 gamma-Chlordane

R.T.: 6.046 min  
 Delta R.T.: -0.002 min  
 Response: 138617844  
 Conc: 41.18 ng/ml m



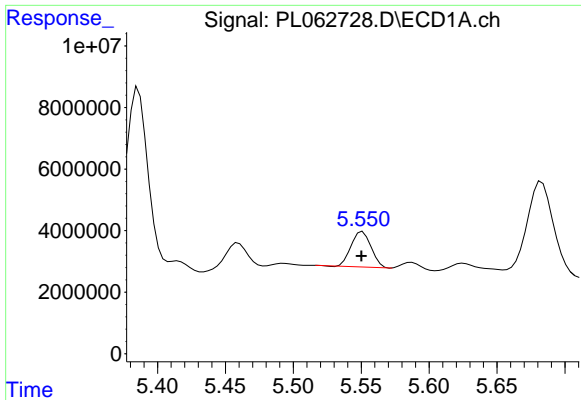
#11 alpha-Chlordane

R.T.: 5.385 min  
 Delta R.T.: -0.002 min  
 Response: 66364559  
 Conc: 36.71 ng/ml m



#11 alpha-Chlordane

R.T.: 6.120 min  
 Delta R.T.: 0.000 min  
 Response: 190589866  
 Conc: 56.57 ng/ml m



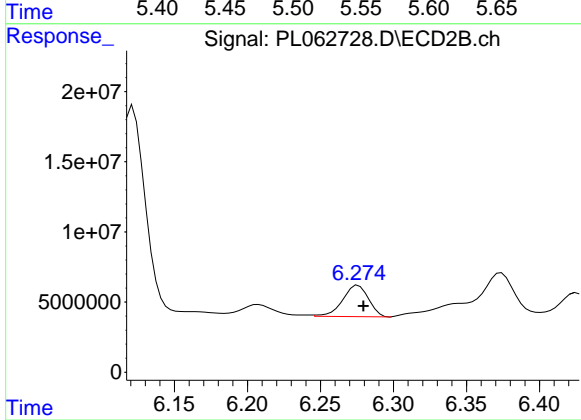
#12 4,4'-DDE

R.T.: 5.551 min  
 Delta R.T.: 0.000 min  
 Response: 11817269  
 Conc: 7.14 ng/ml

Instrument :  
 ECD\_L  
 ClientSampled :  
 FK-GF-02-063-A

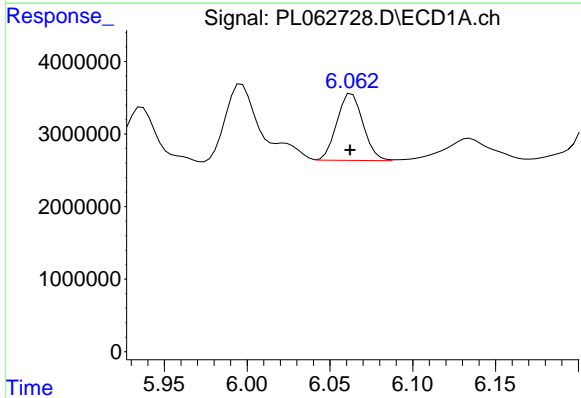
Manual Integrations  
 APPROVED

Ankita  
 11/2/2020 3:02:40 PM



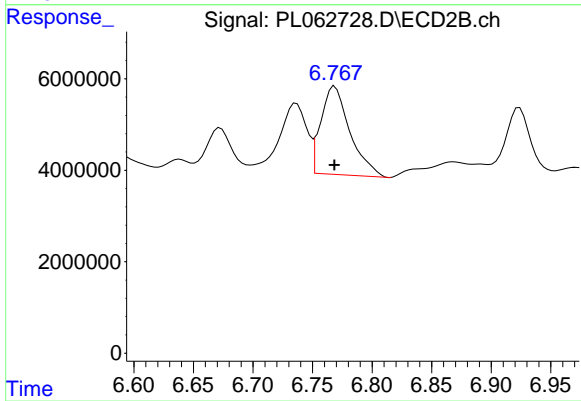
#12 4,4'-DDE

R.T.: 6.276 min  
 Delta R.T.: -0.003 min  
 Response: 27534578  
 Conc: 8.55 ng/ml



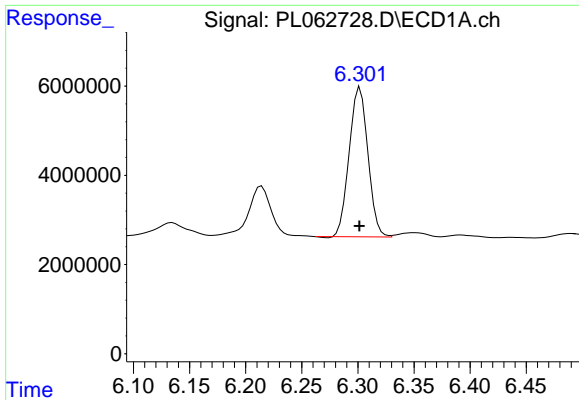
#16 4,4'-DDD

R.T.: 6.062 min  
 Delta R.T.: 0.000 min  
 Response: 10162128  
 Conc: 7.18 ng/ml m



#16 4,4'-DDD

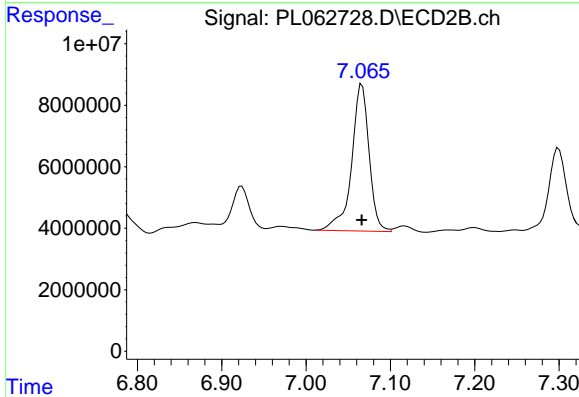
R.T.: 6.769 min  
 Delta R.T.: 0.000 min  
 Response: 32680992  
 Conc: 12.77 ng/ml



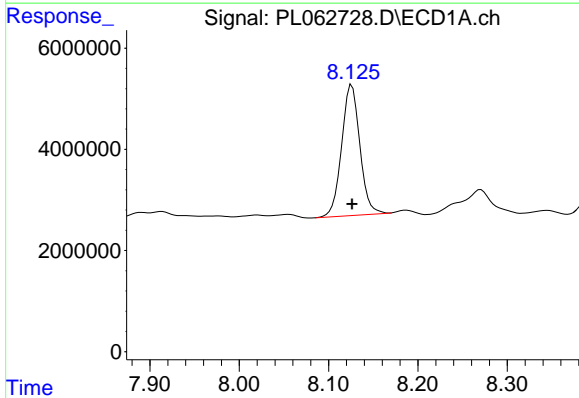
#17 4,4'-DDT  
 R.T.: 6.302 min  
 Delta R.T.: 0.000 min  
 Response: 38812295  
 Conc: 29.08 ng/ml

**Instrument :**  
 ECD\_L  
**ClientSampled :**  
 FK-GF-02-063-A

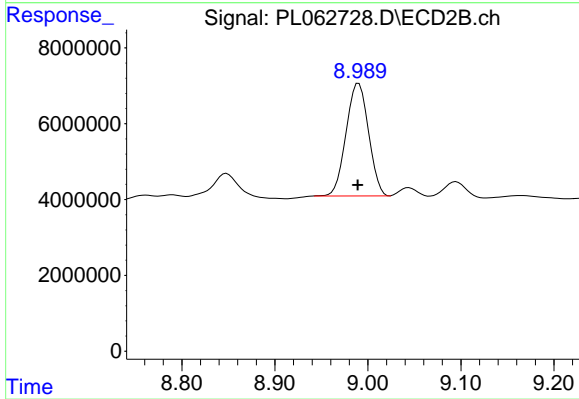
**Manual Integrations**  
**APPROVED**  
 Ankita  
 11/2/2020 3:02:40 PM



#17 4,4'-DDT  
 R.T.: 7.066 min  
 Delta R.T.: 0.000 min  
 Response: 68811881  
 Conc: 30.65 ng/ml



#28 Decachlorobiphenyl  
 R.T.: 8.126 min  
 Delta R.T.: 0.000 min  
 Response: 36717993  
 Conc: 22.89 ng/ml



#28 Decachlorobiphenyl  
 R.T.: 8.990 min  
 Delta R.T.: 0.001 min  
 Response: 49891083  
 Conc: 23.84 ng/ml