

Data Path : Z:\pestpcbsrv\HPCHEM1\ECD_L\Data\PL103023\
 Data File : PL086290.D
 Signal(s) : Signal #1: ECD1A.ch Signal #2: ECD2B.ch
 Acq On : 30 Oct 2023 18:04
 Operator : AR\AJ
 Sample : 04696-02
 Misc : TOX MDL WATER
 ALS Vial : 10 Sample Multiplier: 1

Integration File signal 1: autoint1.e
 Integration File signal 2: autoint2.e
 Quant Time: Oct 30 21:29:25 2023
 Quant Method : Z:\pestpcbsrv\HPCHEM1\ECD_L\methods\PL102623CLP.M
 Quant Title : GC Extractables
 QLast Update : Fri Oct 27 01:35:51 2023
 Response via : Initial Calibration
 Integrator: ChemStation

Volume Inj. : 1 µl
 Signal #1 Phase : ZB-MR1 Signal #2 Phase: ZB-MR1
 Signal #1 Info : 30M x 0.32mm x0.2 Signal #2 Info : 30M x 0.32mm x 0.50µm

	Compound	RT#1	RT#2	Resp#1	Resp#2	ng/ml	ng/ml

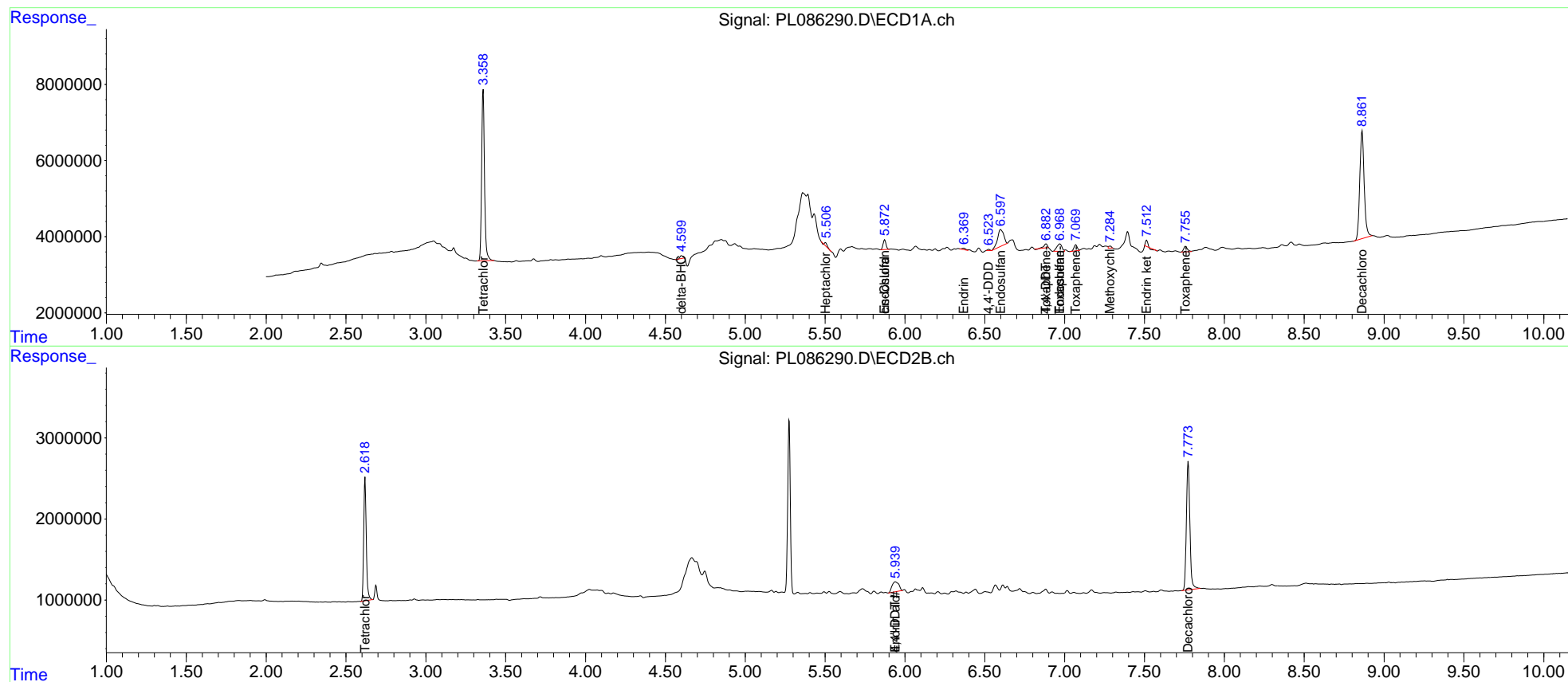
System Monitoring Compounds							
1)	SA Tetrachlo...	3.359	2.620	55772334	16745181	19.568	18.462
2)	SA Decachlor...	8.863	7.774	54678839	24409801	21.940	21.264
Target Compounds							
2)	A alpha-BHC	3.782f	0.000	113437	0	<MDL	N.D. #
3)	MA gamma-BHC...	4.152	0.000	72646	0	<MDL	N.D. #
7)	B delta-BHC	4.601	0.000	974875	0	0.262	N.D. #
8)	B Heptachlo...	5.503	0.000	607733	0	0.179	N.D. #
9)	A Endosulfan I	5.873	0.000	3220840	0	1.002	N.D. #
10)	B trans-Chl...	5.777	0.000	267409	0	<MDL	N.D. #
11)	B cis-Chlor...	5.873f	0.000	3220840	0	0.916	N.D. #
13)	MA Dieldrin	6.154	0.000	72025	0	<MDL	N.D. #
14)	MA Endrin	6.368	0.000	645445	0	0.220	N.D. #
15)	B Endosulfa...	6.599	0.000	11753476	0	3.755	N.D. #
16)	A 4,4'-DDD	6.525	0.000	311204	0	0.131	N.D. #
17)	MA 4,4'-DDT	6.884	5.940f	1535399	3584950	0.641	3.983 #
18)	B Endrin al...	6.759	5.940	-209090	3584950	N.D.	3.786
19)	B Endosulfa...	6.970	0.000	4292832	0	1.509	N.D. #
20)	A Methoxychlor	7.285f	0.000	704448	0	0.559	N.D. #
21)	B Endrin ke...	7.514f	0.000	1234363	0	0.428	N.D. #
23)	Toxaphene-2	6.884	0.000	1535399	0	17.767	N.D. #
24)	Toxaphene-3	6.970	0.000	4292832	0	68.398	N.D. #
25)	Toxaphene-4	7.070	0.000	2303466	0	61.293	N.D. #
26)	Toxaphene-5	7.757	0.000	2382836	0	53.991	N.D. #

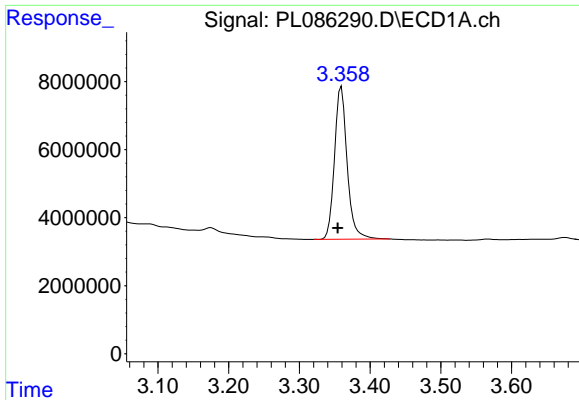
(f)=RT Delta > 1/2 Window (#)=Amounts differ by > 25% (m)=manual int.

Data Path : Z:\pestpcbsrv\HPCHEM1\ECD_L\Data\PL103023\
 Data File : PL086290.D
 Signal(s) : Signal #1: ECD1A.ch Signal #2: ECD2B.ch
 Acq On : 30 Oct 2023 18:04
 Operator : AR\AJ
 Sample : 04696-02
 Misc : TOX MDL WATER
 ALS Vial : 10 Sample Multiplier: 1

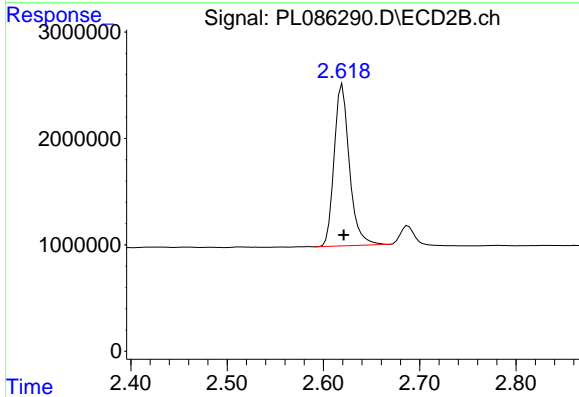
Integration File signal 1: autoint1.e
 Integration File signal 2: autoint2.e
 Quant Time: Oct 30 21:29:25 2023
 Quant Method : Z:\pestpcbsrv\HPCHEM1\ECD_L\methods\PL102623CLP.M
 Quant Title : GC Extractables
 QLast Update : Fri Oct 27 01:35:51 2023
 Response via : Initial Calibration
 Integrator: ChemStation

Volume Inj. : 1 µl
 Signal #1 Phase : ZB-MR2 Signal #2 Phase: ZB-MR1
 Signal #1 Info : 30M x 0.32mm x0.2 Signal #2 Info : 30M x 0.32mm x 0.50µm

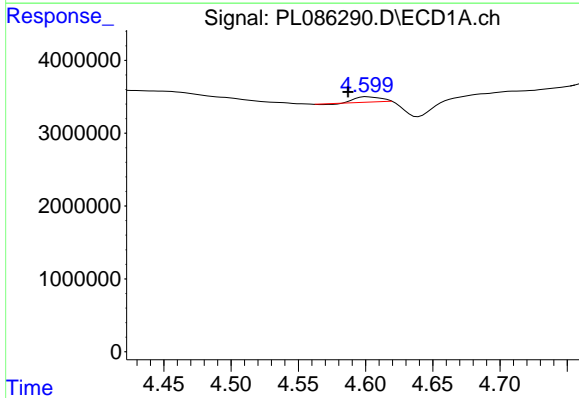




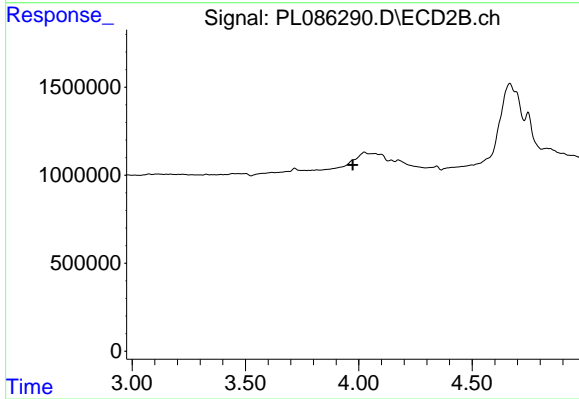
#1 Tetrachloro-m-xylene
 R.T.: 3.359 min
 Delta R.T.: 0.005 min
 Response: 55772334
 Conc: 19.57 ng/ml



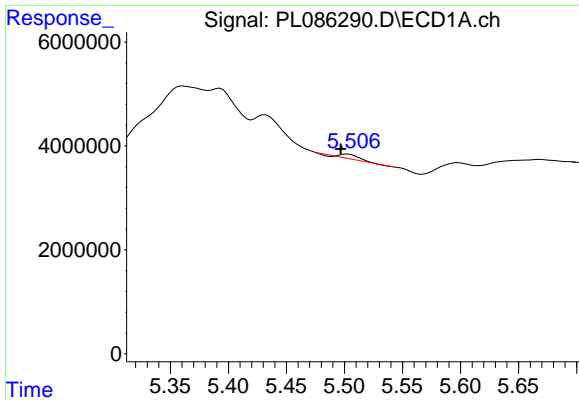
#1 Tetrachloro-m-xylene
 R.T.: 2.620 min
 Delta R.T.: -0.001 min
 Response: 16745181
 Conc: 18.46 ng/ml



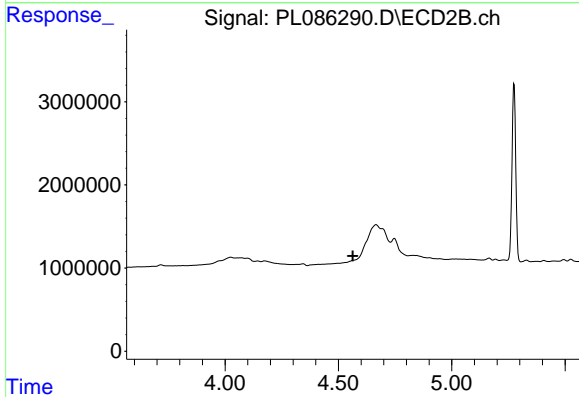
#7 delta-BHC
 R.T.: 4.601 min
 Delta R.T.: 0.014 min
 Response: 974875
 Conc: 0.26 ng/ml



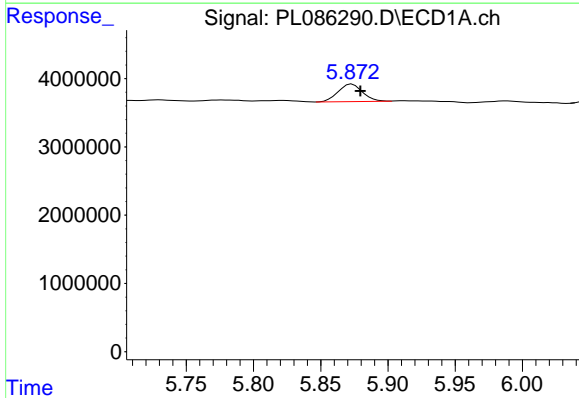
#7 delta-BHC
 R.T.: 0.000 min
 Exp R.T.: 3.974 min
 Response: 0
 Conc: N.D.



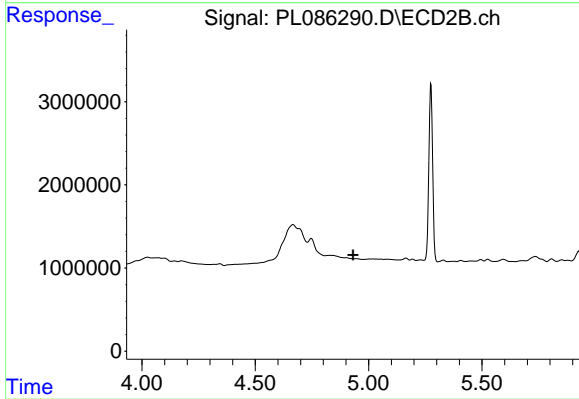
#8 Heptachlor epoxide
 R.T.: 5.503 min
 Delta R.T.: 0.006 min
 Response: 607733
 Conc: 0.18 ng/ml



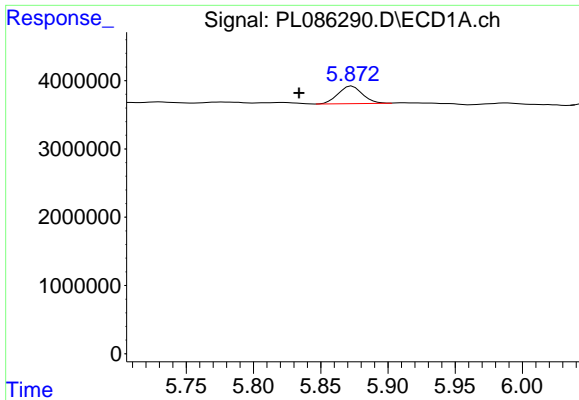
#8 Heptachlor epoxide
 R.T.: 0.000 min
 Exp R.T. : 4.564 min
 Response: 0
 Conc: N.D.



#9 Endosulfan I
 R.T.: 5.873 min
 Delta R.T.: -0.006 min
 Response: 3220840
 Conc: 1.00 ng/ml

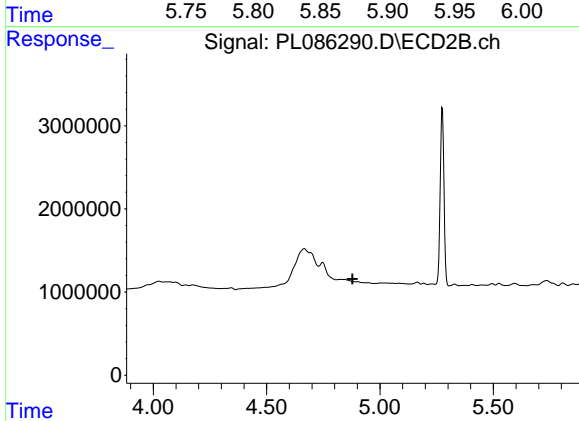


#9 Endosulfan I
 R.T.: 0.000 min
 Exp R.T. : 4.931 min
 Response: 0
 Conc: N.D.



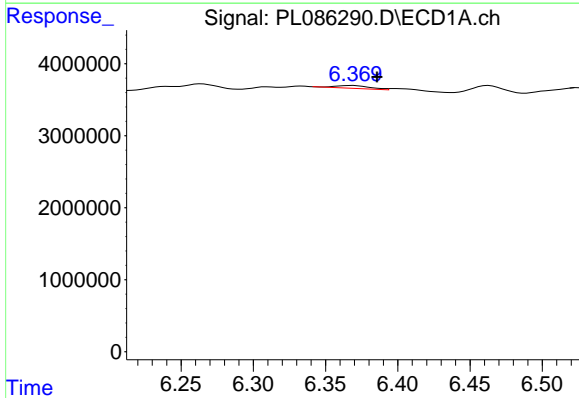
#11 cis-Chlordane

R.T.: 5.873 min
Delta R.T.: 0.039 min
Response: 3220840
Conc: 0.92 ng/ml



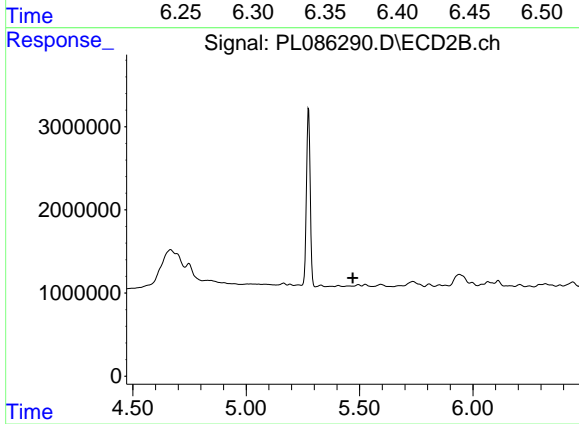
#11 cis-Chlordane

R.T.: 0.000 min
Exp R.T. : 4.880 min
Response: 0
Conc: N.D.



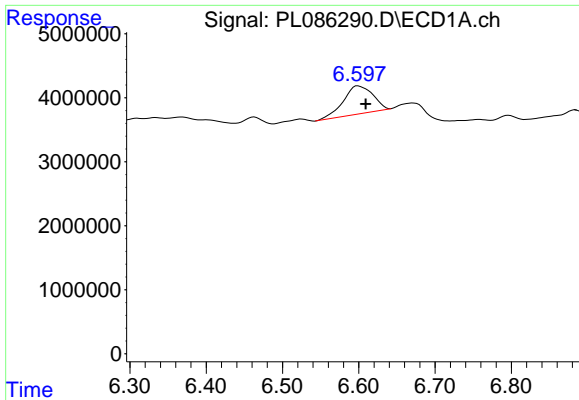
#14 Endrin

R.T.: 6.368 min
Delta R.T.: -0.017 min
Response: 645445
Conc: 0.22 ng/ml



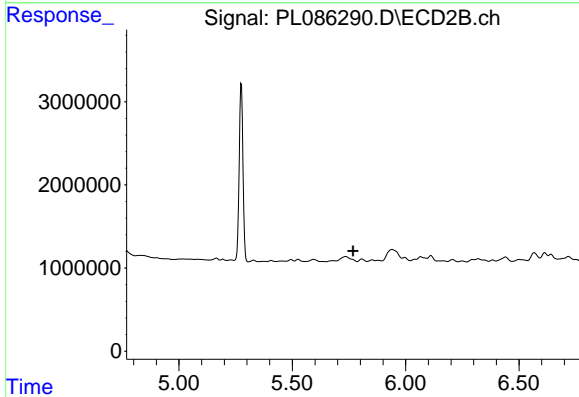
#14 Endrin

R.T.: 0.000 min
Exp R.T. : 5.471 min
Response: 0
Conc: N.D.



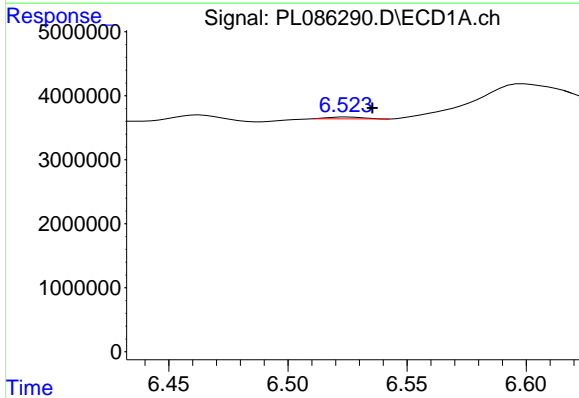
#15 Endosulfan II

R.T.: 6.599 min
Delta R.T.: -0.010 min
Response: 11753476
Conc: 3.76 ng/ml



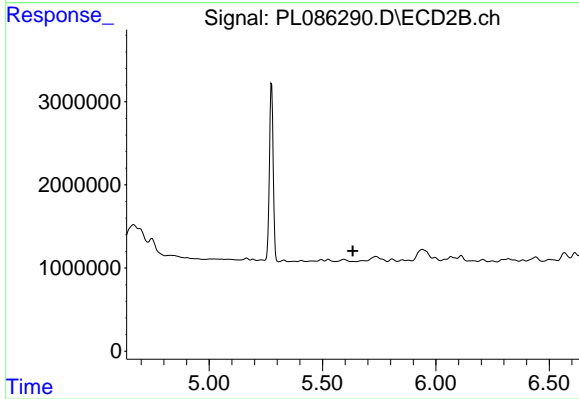
#15 Endosulfan II

R.T.: 0.000 min
Exp R.T. : 5.769 min
Response: 0
Conc: N.D.



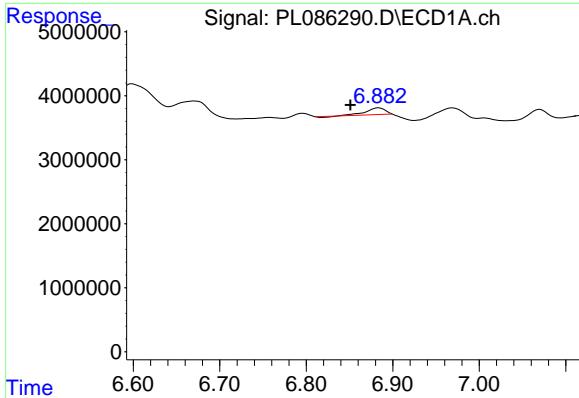
#16 4,4'-DDD

R.T.: 6.525 min
Delta R.T.: -0.011 min
Response: 311204
Conc: 0.13 ng/ml

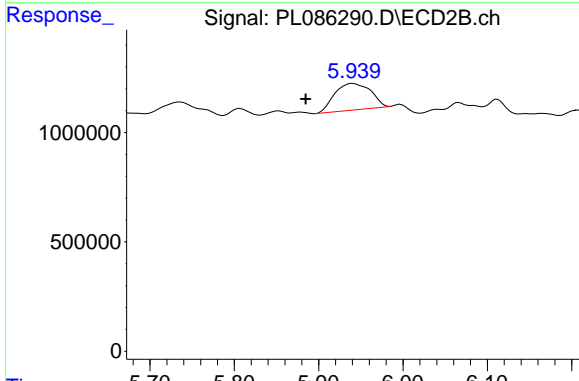


#16 4,4'-DDD

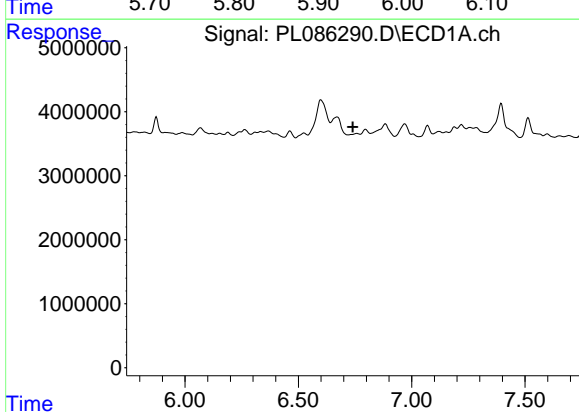
R.T.: 0.000 min
Exp R.T. : 5.634 min
Response: 0
Conc: N.D.



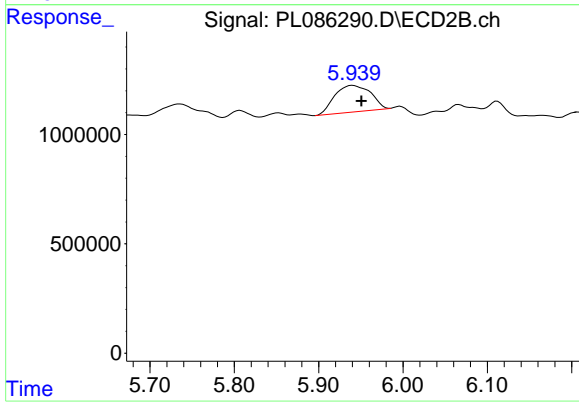
#17 4,4'-DDT
 R.T.: 6.884 min
 Delta R.T.: 0.033 min
 Response: 1535399
 Conc: 0.64 ng/ml



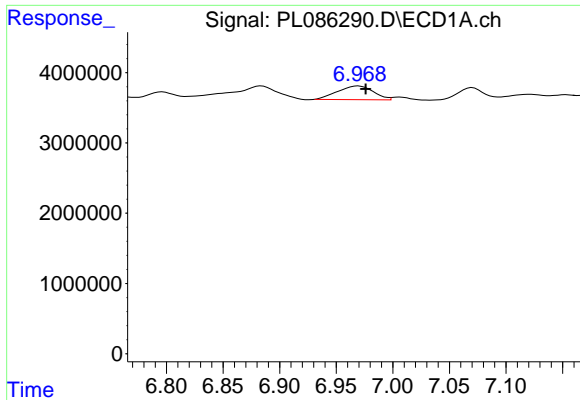
#17 4,4'-DDT
 R.T.: 5.940 min
 Delta R.T.: 0.056 min
 Response: 3584950
 Conc: 3.98 ng/ml



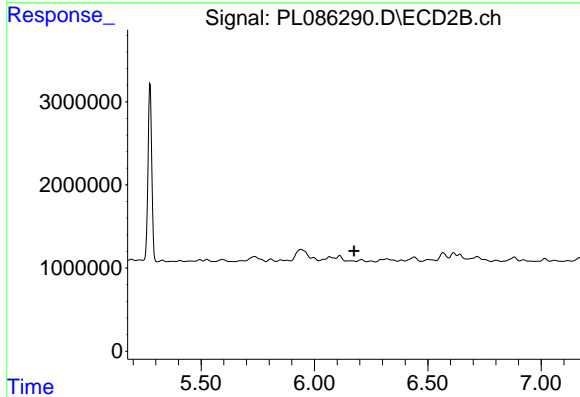
#18 Endrin aldehyde
 R.T.: 6.759 min
 Delta R.T.: 0.018 min
 Response: -209090
 Conc: N.D.



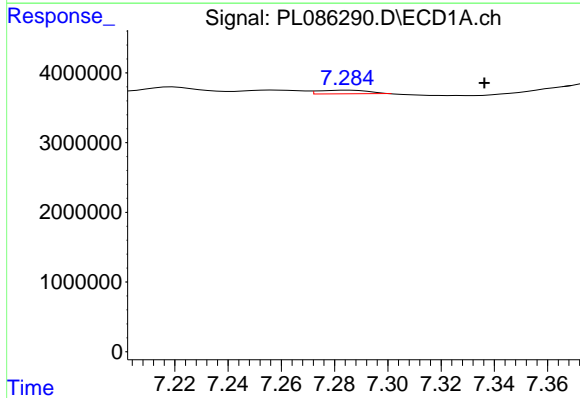
#18 Endrin aldehyde
 R.T.: 5.940 min
 Delta R.T.: -0.010 min
 Response: 3584950
 Conc: 3.79 ng/ml



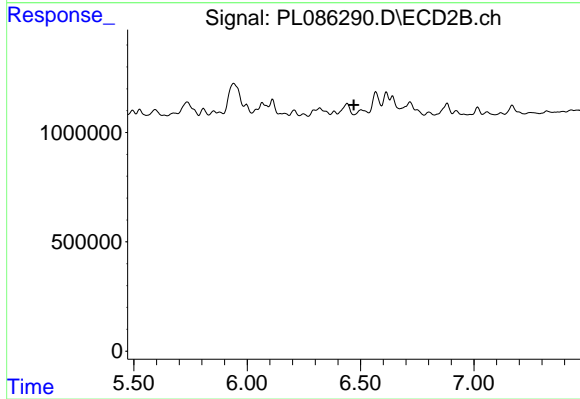
#19 Endosulfan Sulfate
 R.T.: 6.970 min
 Delta R.T.: -0.007 min
 Response: 4292832
 Conc: 1.51 ng/ml



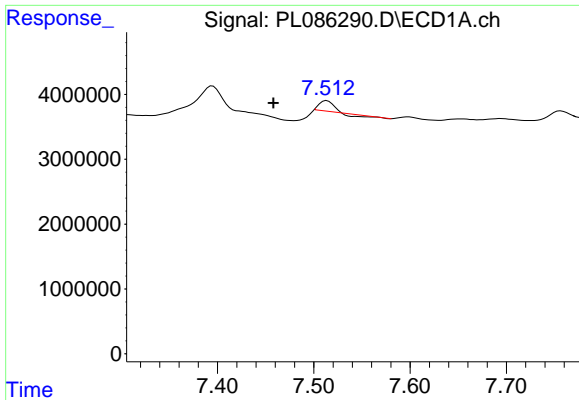
#19 Endosulfan Sulfate
 R.T.: 0.000 min
 Exp R.T. : 6.175 min
 Response: 0
 Conc: N.D.



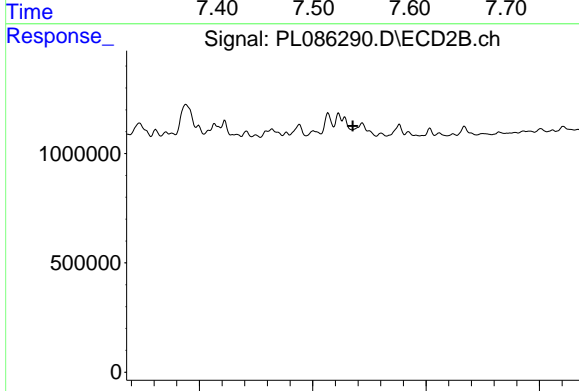
#20 Methoxychlor
 R.T.: 7.285 min
 Delta R.T.: -0.051 min
 Response: 704448
 Conc: 0.56 ng/ml



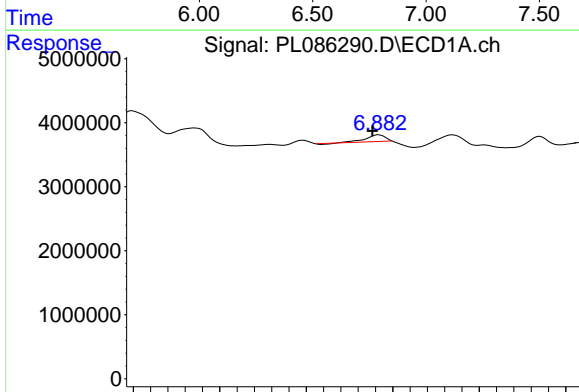
#20 Methoxychlor
 R.T.: 0.000 min
 Exp R.T. : 6.470 min
 Response: 0
 Conc: N.D.



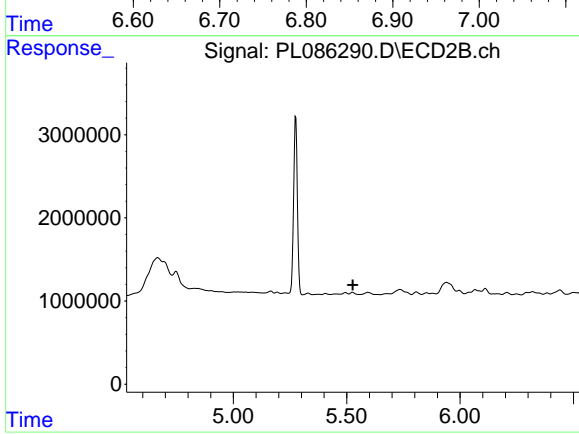
#21 Endrin ketone
R.T.: 7.514 min
Delta R.T.: 0.055 min
Response: 1234363
Conc: 0.43 ng/ml



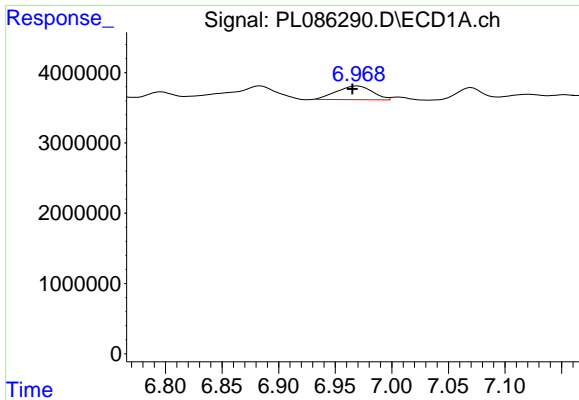
#21 Endrin ketone
R.T.: 0.000 min
Exp R.T. : 6.677 min
Response: 0
Conc: N.D.



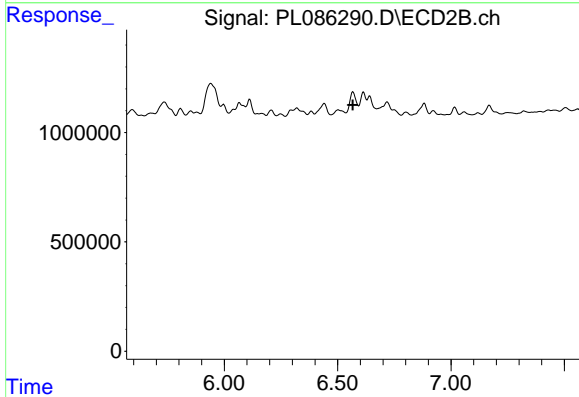
#23 Toxaphene-2
R.T.: 6.884 min
Delta R.T.: 0.007 min
Response: 1535399
Conc: 17.77 ng/ml



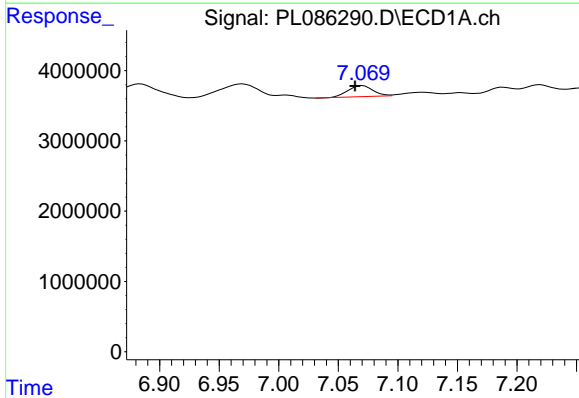
#23 Toxaphene-2
R.T.: 0.000 min
Exp R.T. : 5.527 min
Response: 0
Conc: N.D.



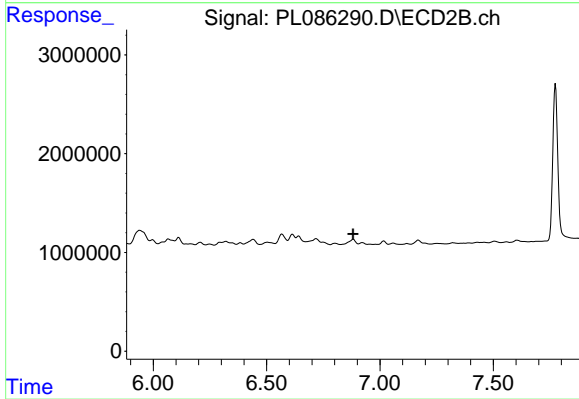
#24 Toxaphene-3
 R.T.: 6.970 min
 Delta R.T.: 0.004 min
 Response: 4292832
 Conc: 68.40 ng/ml



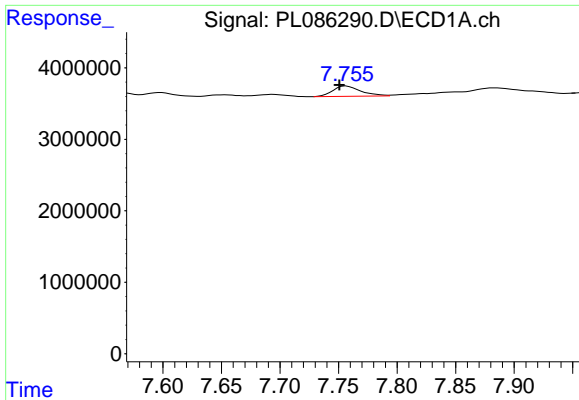
#24 Toxaphene-3
 R.T.: 0.000 min
 Exp R.T. : 6.567 min
 Response: 0
 Conc: N.D.



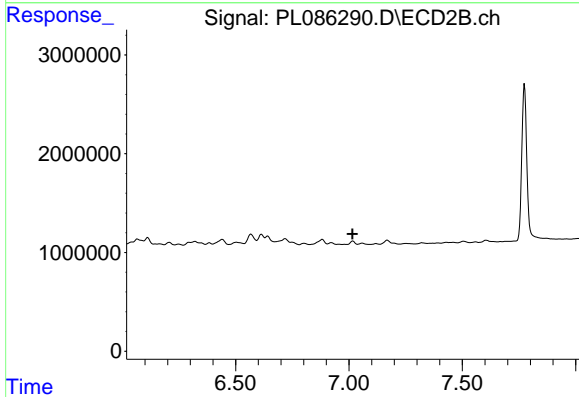
#25 Toxaphene-4
 R.T.: 7.070 min
 Delta R.T.: 0.006 min
 Response: 2303466
 Conc: 61.29 ng/ml



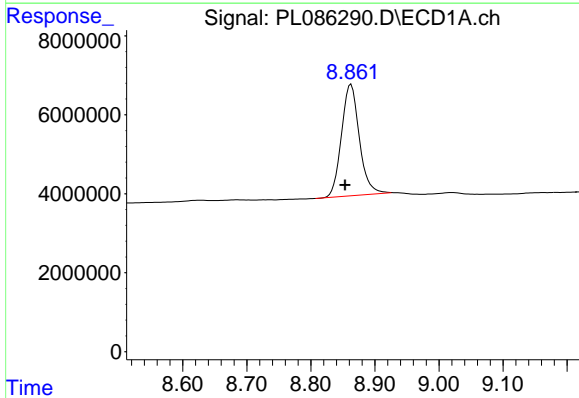
#25 Toxaphene-4
 R.T.: 0.000 min
 Exp R.T. : 6.881 min
 Response: 0
 Conc: N.D.



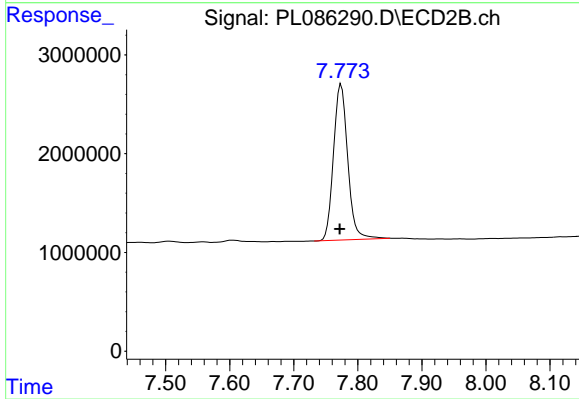
#26 Toxaphene-5
 R.T.: 7.757 min
 Delta R.T.: 0.006 min
 Response: 2382836
 Conc: 53.99 ng/ml



#26 Toxaphene-5
 R.T.: 0.000 min
 Exp R.T.: 7.016 min
 Response: 0
 Conc: N.D.



#27 Decachlorobiphenyl
 R.T.: 8.863 min
 Delta R.T.: 0.009 min
 Response: 54678839
 Conc: 21.94 ng/ml



#27 Decachlorobiphenyl
 R.T.: 7.774 min
 Delta R.T.: 0.002 min
 Response: 24409801
 Conc: 21.26 ng/ml