

Data Path : Z:\pestpcbsrv\HPCHEM1\ECD_L\Data\PL103122\
 Data File : PL078665.D
 Signal(s) : Signal #1: ECD1A.ch Signal #2: ECD2B.ch
 Acq On : 31 Oct 2022 19:00
 Operator : AR\AJ
 Sample : N5310-20
 Misc :
 ALS Vial : 20 Sample Multiplier: 1

Instrument :
 ECD_L
ClientSampleId :
 BIN 1-2-(2840)-COMP-4

Integration File signal 1: autoint1.e
 Integration File signal 2: autoint2.e
 Quant Time: Oct 31 22:16:51 2022
 Quant Method : Z:\pestpcbsrv\HPCHEM1\ECD_L\methods\PL102122.M
 Quant Title : GC Extractables
 QLast Update : Fri Oct 21 07:08:41 2022
 Response via : Initial Calibration
 Integrator: ChemStation

Volume Inj. : 1 µl
 Signal #1 Phase : ZB-MR2 Signal #2 Phase: ZB-MR1
 Signal #1 Info : 30M x 0.32mm x0.2 Signal #2 Info : 30M x 0.32mm x0.5µm

Compound	RT#1	RT#2	Resp#1	Resp#2	ng/ml	ng/ml

System Monitoring Compounds						
1) SA Tetrachlo...	3.322	2.569	39084723	58720140	20.495	22.999
2) SA Decachlor...	8.771	7.638	32009134	46462570	21.278	24.530

Target Compounds

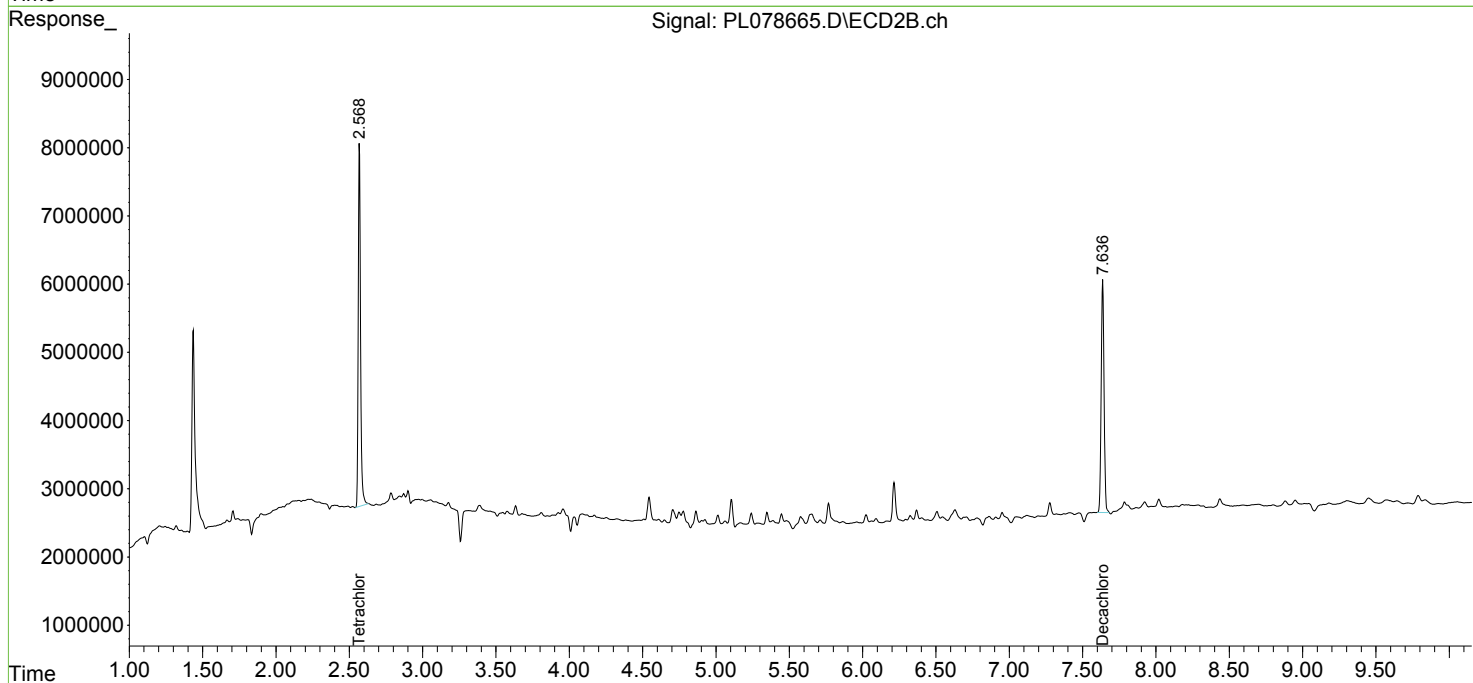
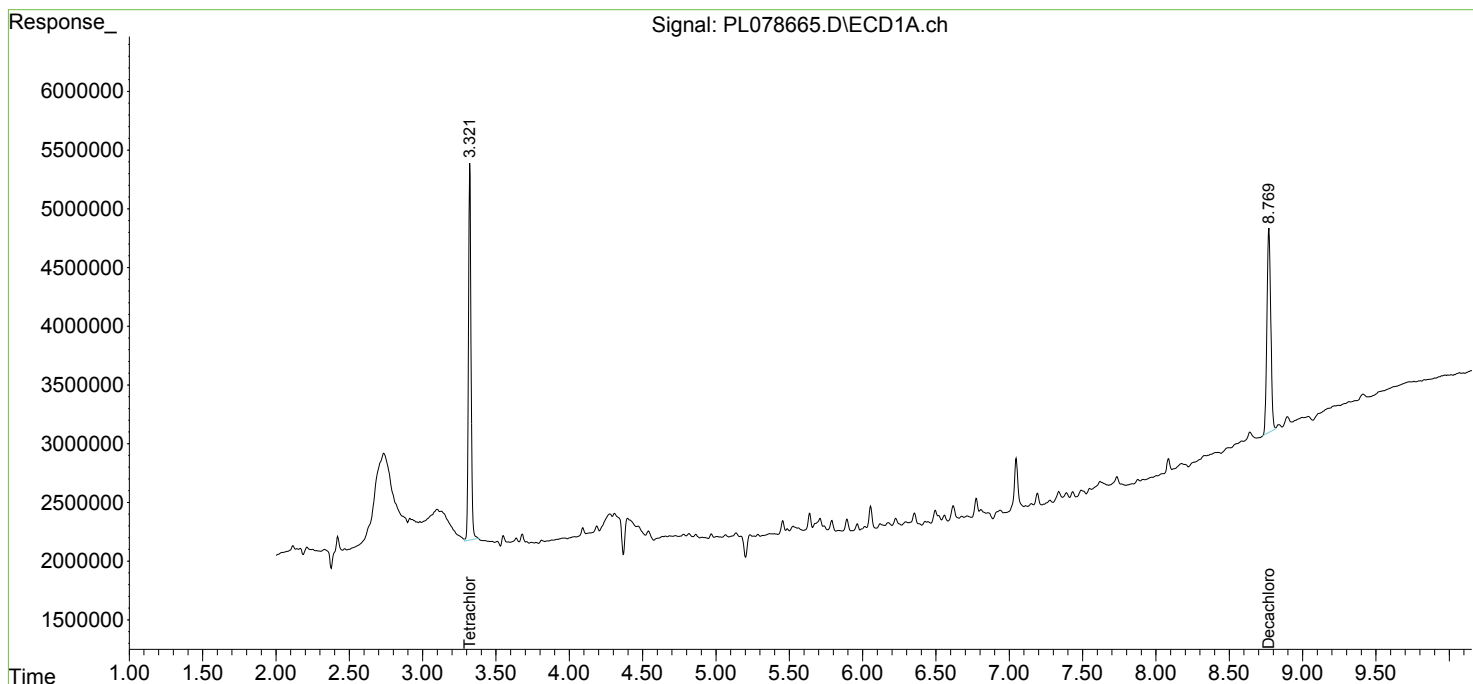
(f)=RT Delta > 1/2 Window (#)=Amounts differ by > 25% (m)=manual int.

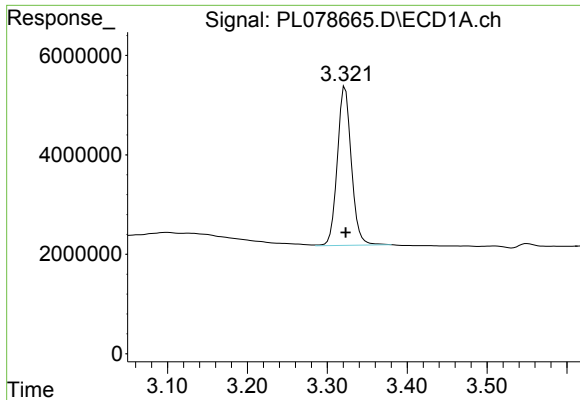
Data Path : Z:\pestpcbsrv\HPCHEM1\ECD_L\Data\PL103122\
 Data File : PL078665.D
 Signal(s) : Signal #1: ECD1A.ch Signal #2: ECD2B.ch
 Acq On : 31 Oct 2022 19:00
 Operator : AR\AJ
 Sample : N5310-20
 Misc :
 ALS Vial : 20 Sample Multiplier: 1

Instrument :
 ECD_L
ClientSampleId :
 BIN 1-2-(2840)-COMP-4

Integration File signal 1: autoint1.e
 Integration File signal 2: autoint2.e
 Quant Time: Oct 31 22:16:51 2022
 Quant Method : Z:\pestpcbsrv\HPCHEM1\ECD_L\methods\PL102122.M
 Quant Title : GC Extractables
 QLast Update : Fri Oct 21 07:08:41 2022
 Response via : Initial Calibration
 Integrator: ChemStation

Volume Inj. : 1 µl
 Signal #1 Phase : ZB-MR2 Signal #2 Phase: ZB-MR1
 Signal #1 Info : 30M x 0.32mm x0.2 Signal #2 Info : 30M x 0.32mm x0.5µm

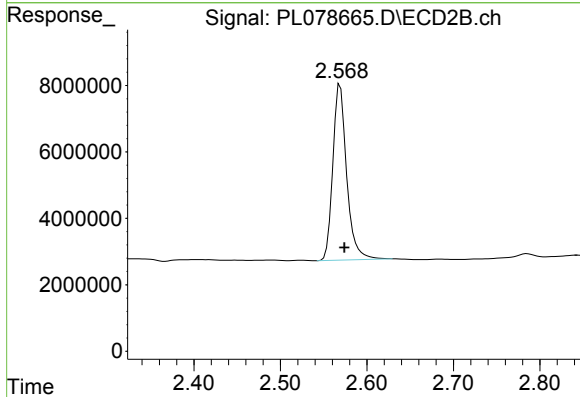




#1 Tetrachloro-m-xylene

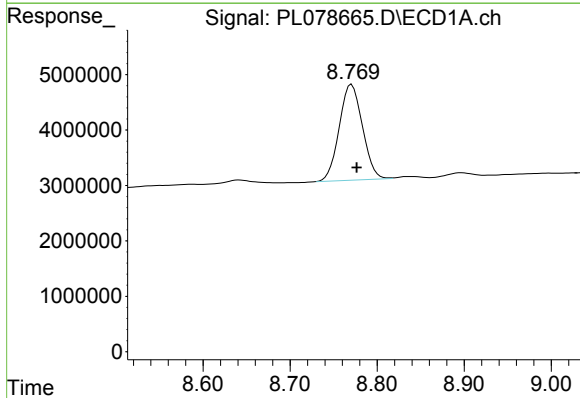
R.T.: 3.322 min
Delta R.T.: 0.000 min
Response: 39084723
Conc: 20.50 ng/ml

Instrument :
ECD_L
ClientSampleId :
BIN 1-2-(2840)-COMP-4



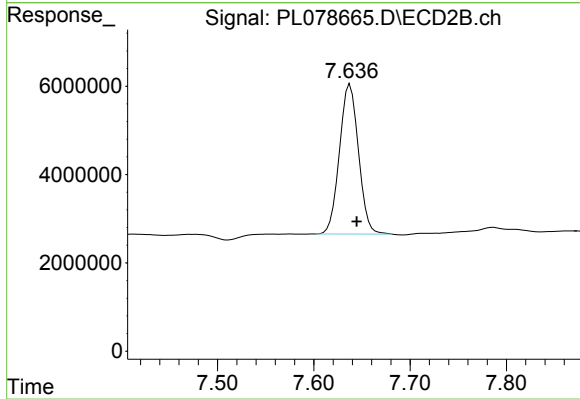
#1 Tetrachloro-m-xylene

R.T.: 2.569 min
Delta R.T.: -0.005 min
Response: 58720140
Conc: 23.00 ng/ml



#28 Decachlorobiphenyl

R.T.: 8.771 min
Delta R.T.: -0.006 min
Response: 32009134
Conc: 21.28 ng/ml



#28 Decachlorobiphenyl

R.T.: 7.638 min
Delta R.T.: -0.007 min
Response: 46462570
Conc: 24.53 ng/ml