

Data Path : Z:\pestpcbsrv\HPCHEM1\ECD_L\Data\PL110122\
 Data File : PL078705.D
 Signal(s) : Signal #1: ECD1A.ch Signal #2: ECD2B.ch
 Acq On : 01 Nov 2022 16:32
 Operator : AR\AJ
 Sample : N5371-01
 Misc :
 ALS Vial : 19 Sample Multiplier: 1

Instrument :
 ECD_L
 ClientSampleId :

Integration File signal 1: autoint1.e
 Integration File signal 2: autoint2.e
 Quant Time: Nov 01 22:23:46 2022
 Quant Method : Z:\pestpcbsrv\HPCHEM1\ECD_L\methods\PL102122.M
 Quant Title : GC Extractables
 QLast Update : Fri Oct 21 07:08:41 2022
 Response via : Initial Calibration
 Integrator: ChemStation

Volume Inj. : 1 µl
 Signal #1 Phase : ZB-MR1 Signal #2 Phase: ZB-MR1
 Signal #1 Info : 30M x 0.32mm x0.2 Signal #2 Info : 30M x 0.32mm x0.5µm

	Compound	RT#1	RT#2	Resp#1	Resp#2	ng/ml	ng/ml

System Monitoring Compounds							
1)	SA Tetrachlo...	3.322	2.569	19467829	28662761	10.209	11.226
28)	SA Decachlor...	8.772	7.637	15457653	20944149	10.275	11.058
Target Compounds							
2)	A alpha-BHC	3.787	0.000	15809	0	0.006	N.D. #
5)	MB Aldrin	0.000	3.994	0	2333489	N.D.	0.666 #
7)	B delta-BHC	4.542f	0.000	620434	0	0.272	N.D. #
14)	MA Endrin	6.326f	5.393f	456191	845343	0.240	0.324 #
15)	B Endosulfa...	6.553f	0.000	547666	0	0.292	N.D. #
17)	MA 4,4'-DDT	6.829f	0.000	329309	0	0.184	N.D. #
20)	A Methoxychlor	7.296	0.000	73912	0	0.080	N.D. #
22)	Mirex	7.871f	0.000	288705	0	0.198	N.D. #
23)	Chlordane-1	0.000	3.517f	0	173197	N.D.	1.717 #

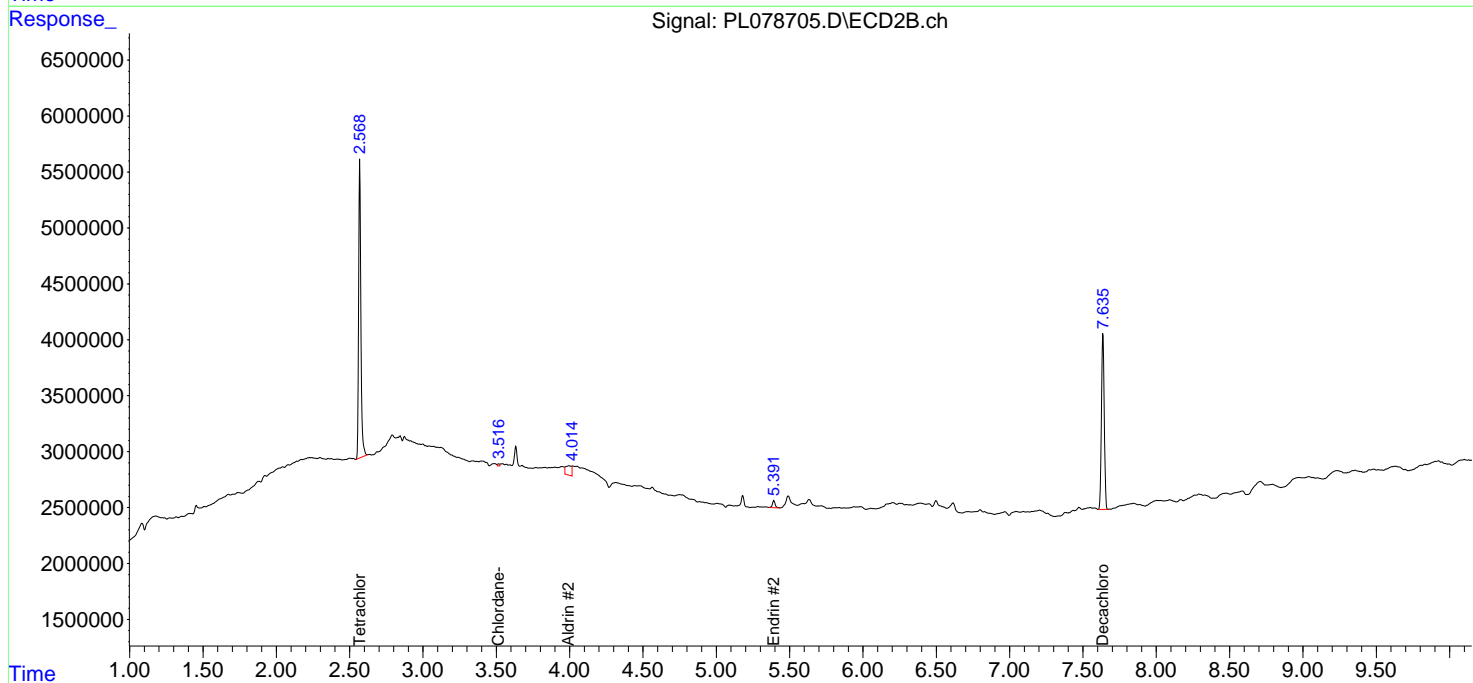
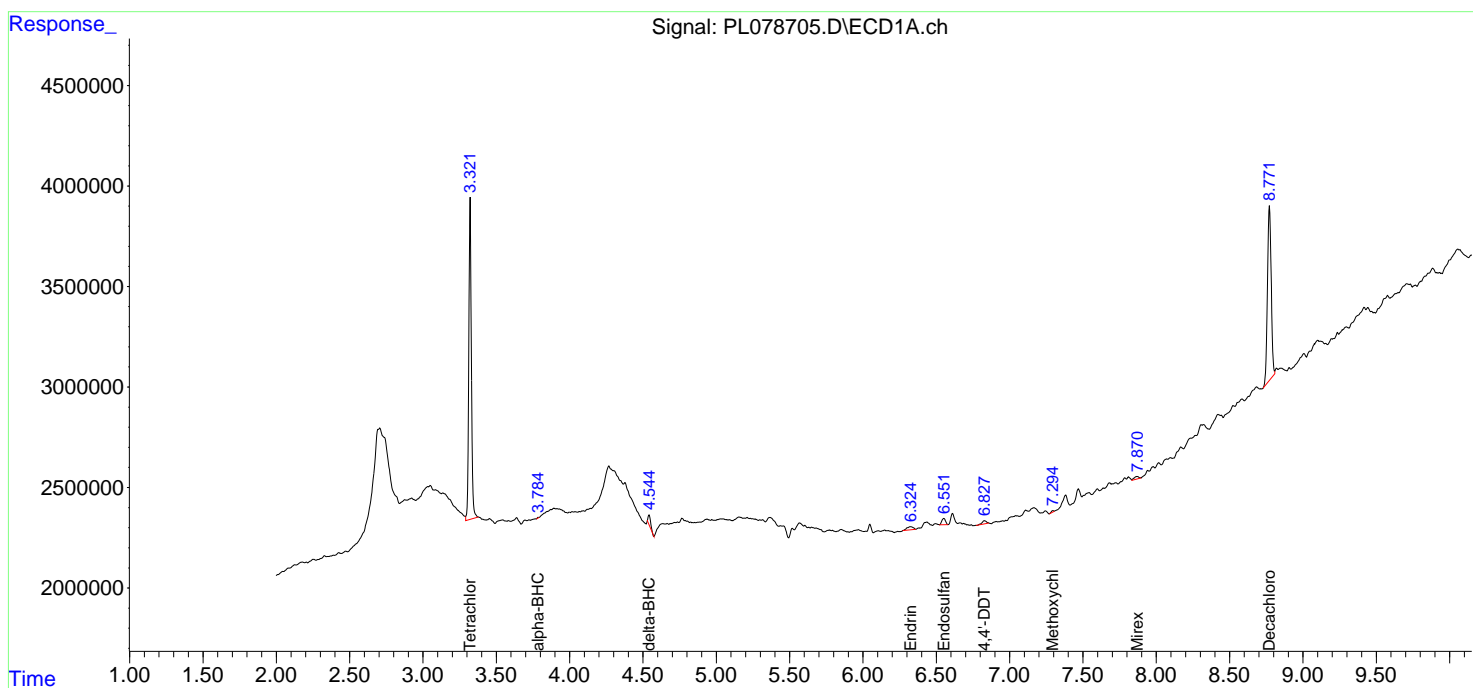
(f)=RT Delta > 1/2 Window (#)=Amounts differ by > 25% (m)=manual int.

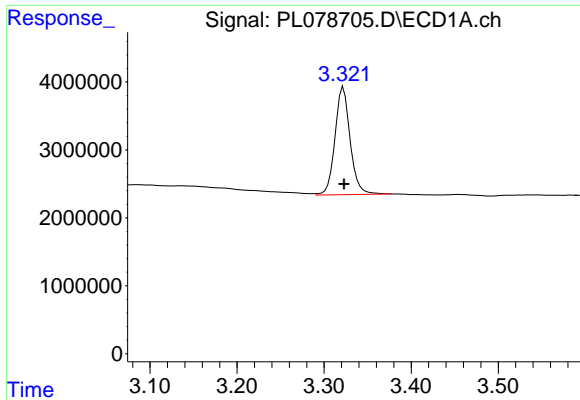
Data Path : Z:\pestpcbsrv\HPCHEM1\ECD_L\Data\PL110122\
 Data File : PL078705.D
 Signal(s) : Signal #1: ECD1A.ch Signal #2: ECD2B.ch
 Acq On : 01 Nov 2022 16:32
 Operator : AR\AJ
 Sample : N5371-01
 Misc :
 ALS Vial : 19 Sample Multiplier: 1

Instrument :
 ECD_L
 ClientSampleId :

Integration File signal 1: autoint1.e
 Integration File signal 2: autoint2.e
 Quant Time: Nov 01 22:23:46 2022
 Quant Method : Z:\pestpcbsrv\HPCHEM1\ECD_L\methods\PL102122.M
 Quant Title : GC Extractables
 QLast Update : Fri Oct 21 07:08:41 2022
 Response via : Initial Calibration
 Integrator: ChemStation

Volume Inj. : 1 µl
 Signal #1 Phase : ZB-MR2 Signal #2 Phase: ZB-MR1
 Signal #1 Info : 30M x 0.32mm x0.2 Signal #2 Info : 30M x 0.32mm x0.5µm

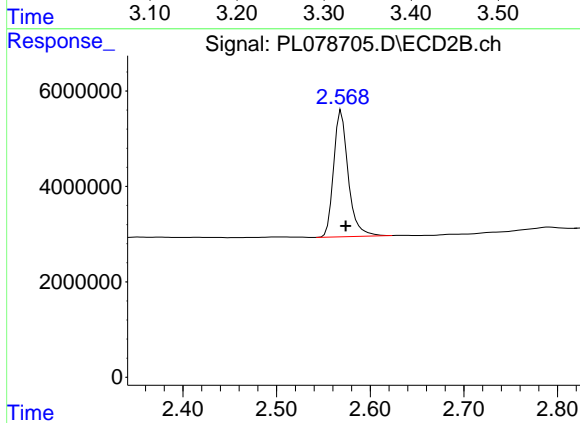




#1 Tetrachloro-m-xylene

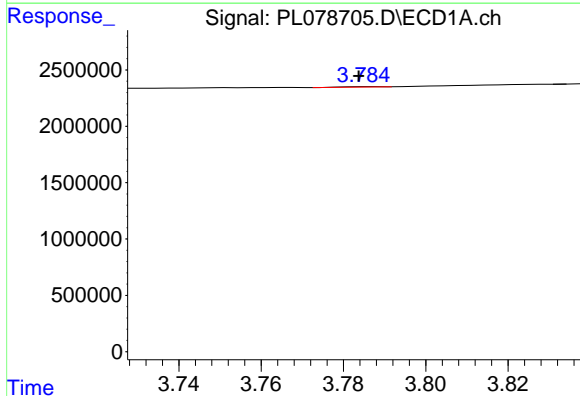
R.T.: 3.322 min
 Delta R.T.: 0.000 min
 Response: 19467829
 Conc: 10.21 ng/ml

Instrument :
 ECD_L
 ClientSampleId :



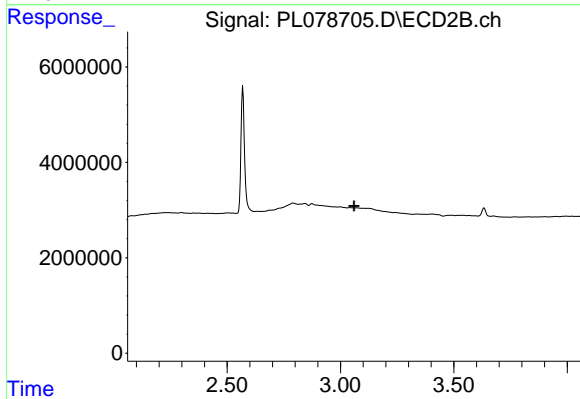
#1 Tetrachloro-m-xylene

R.T.: 2.569 min
 Delta R.T.: -0.005 min
 Response: 28662761
 Conc: 11.23 ng/ml



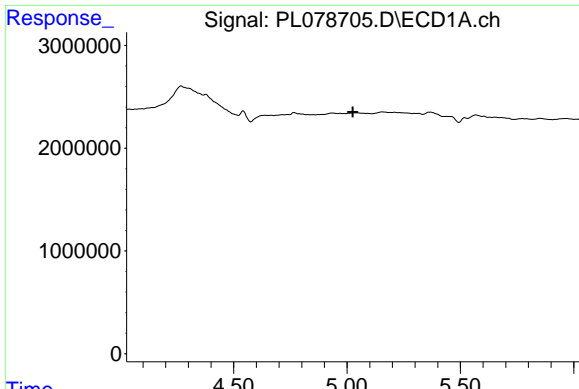
#2 alpha-BHC

R.T.: 3.787 min
 Delta R.T.: 0.003 min
 Response: 15809
 Conc: 0.01 ng/ml



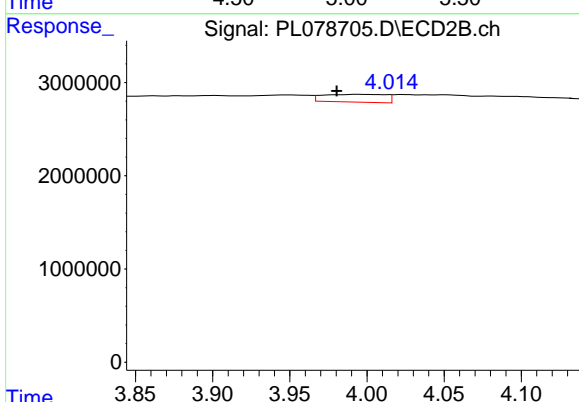
#2 alpha-BHC

R.T.: 0.000 min
 Exp R.T. : 3.061 min
 Response: 0
 Conc: N.D.

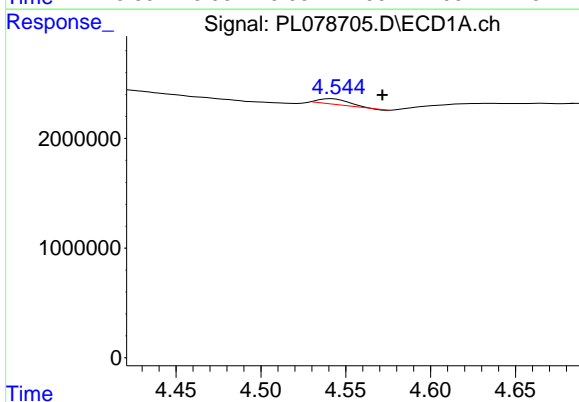


#5 Aldrin
 R.T.: 0.000 min
 Exp R.T.: 5.025 min
 Response: 0
 Conc: N.D.

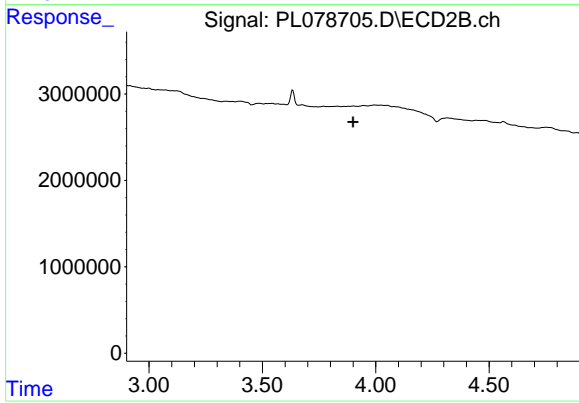
Instrument :
 ECD_L
 ClientSampleId :



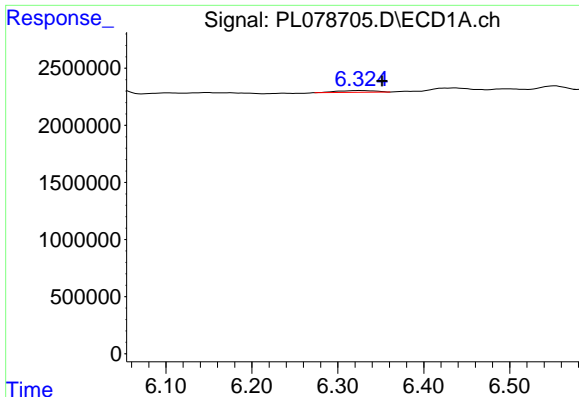
#5 Aldrin
 R.T.: 3.994 min
 Delta R.T.: 0.013 min
 Response: 2333489
 Conc: 0.67 ng/ml



#7 delta-BHC
 R.T.: 4.542 min
 Delta R.T.: -0.030 min
 Response: 620434
 Conc: 0.27 ng/ml



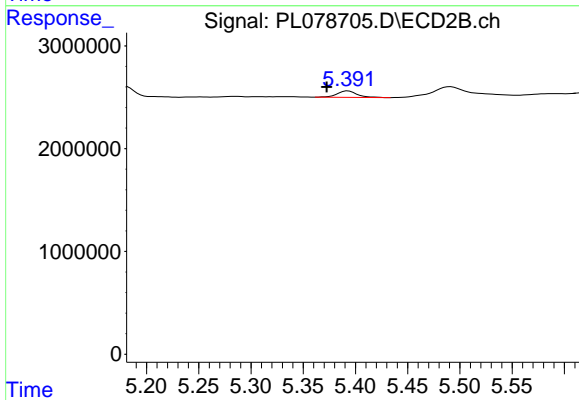
#7 delta-BHC
 R.T.: 0.000 min
 Exp R.T.: 3.901 min
 Response: 0
 Conc: N.D.



#14 Endrin

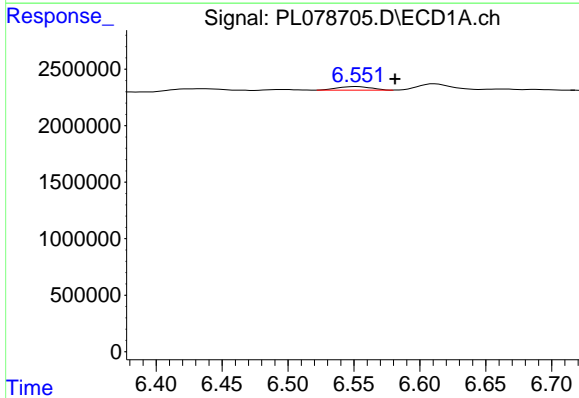
R.T.: 6.326 min
 Delta R.T.: -0.026 min
 Response: 456191
 Conc: 0.24 ng/ml

Instrument :
 ECD_L
 ClientSampleId :



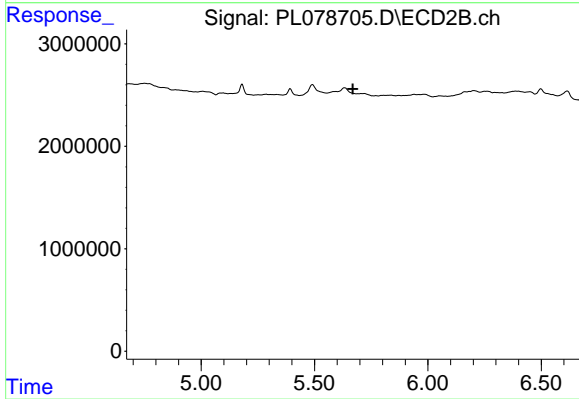
#14 Endrin

R.T.: 5.393 min
 Delta R.T.: 0.020 min
 Response: 845343
 Conc: 0.32 ng/ml



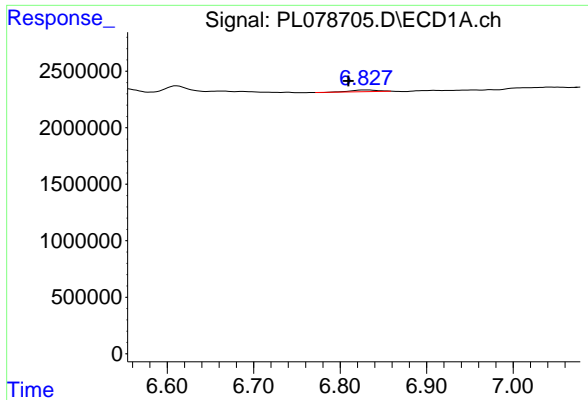
#15 Endosulfan II

R.T.: 6.553 min
 Delta R.T.: -0.029 min
 Response: 547666
 Conc: 0.29 ng/ml



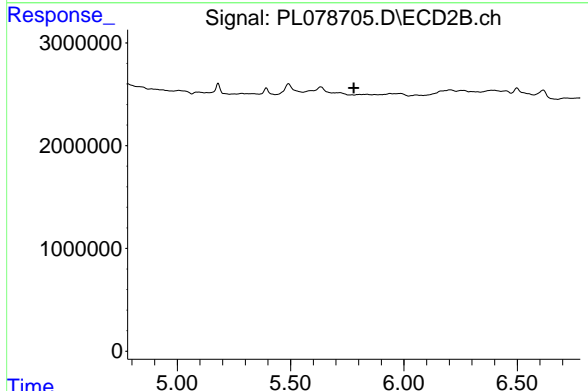
#15 Endosulfan II

R.T.: 0.000 min
 Exp R.T. : 5.669 min
 Response: 0
 Conc: N.D.

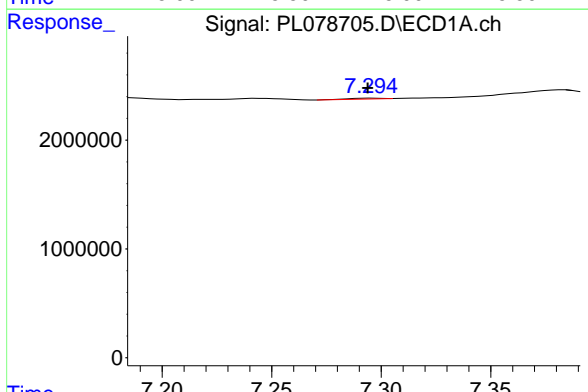


#17 4,4'-DDT
 R.T.: 6.829 min
 Delta R.T.: 0.019 min
 Response: 329309
 Conc: 0.18 ng/ml

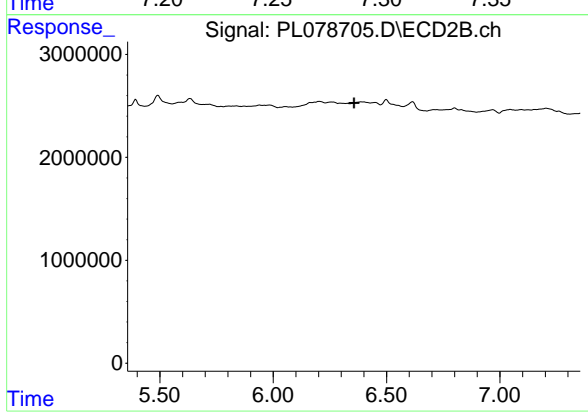
Instrument :
 ECD_L
 ClientSampleId :



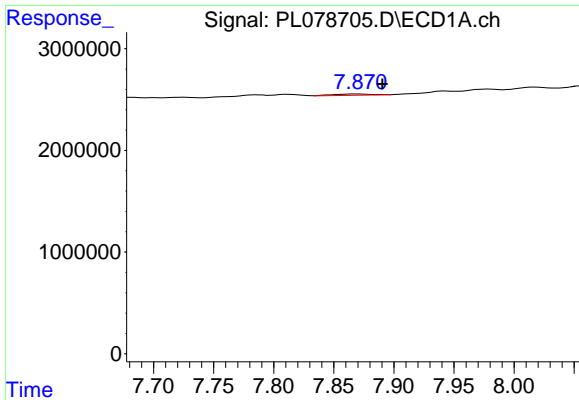
#17 4,4'-DDT
 R.T.: 0.000 min
 Exp R.T. : 5.779 min
 Response: 0
 Conc: N.D.



#20 Methoxychlor
 R.T.: 7.296 min
 Delta R.T.: 0.002 min
 Response: 73912
 Conc: 0.08 ng/ml

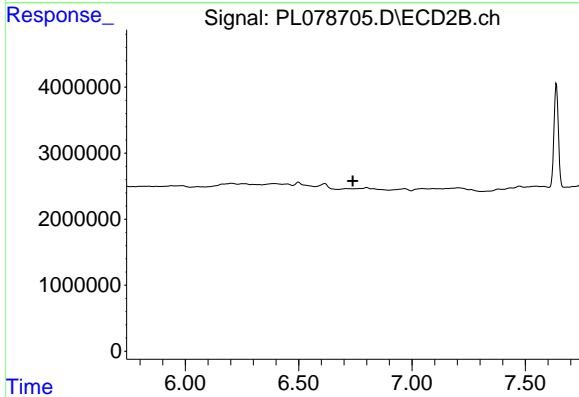


#20 Methoxychlor
 R.T.: 0.000 min
 Exp R.T. : 6.357 min
 Response: 0
 Conc: N.D.

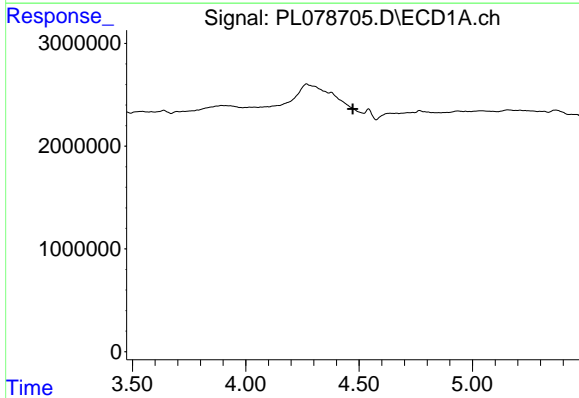


#22 Mirex
 R.T.: 7.871 min
 Delta R.T.: -0.019 min
 Response: 288705
 Conc: 0.20 ng/ml

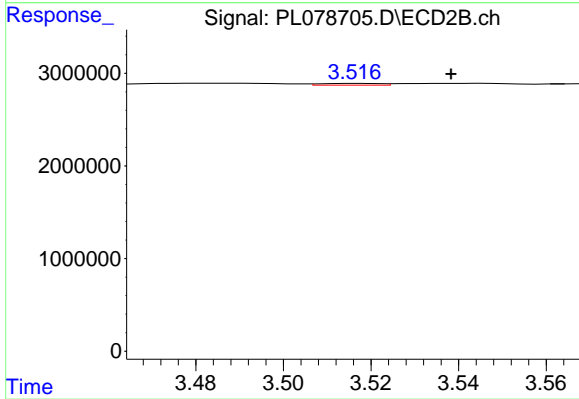
Instrument :
 ECD_L
 ClientSampleId :



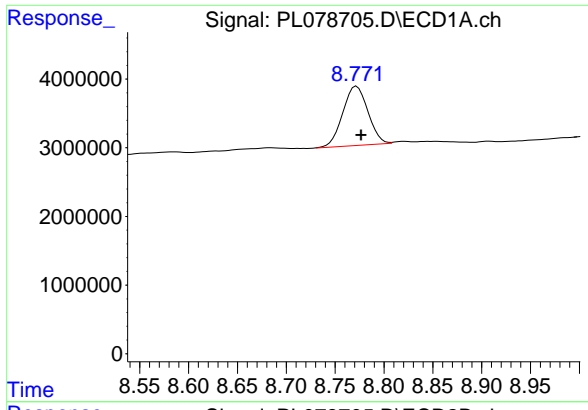
#22 Mirex
 R.T.: 0.000 min
 Exp R.T. : 6.739 min
 Response: 0
 Conc: N.D.



#23 Chlordane-1
 R.T.: 0.000 min
 Exp R.T. : 4.472 min
 Response: 0
 Conc: N.D.

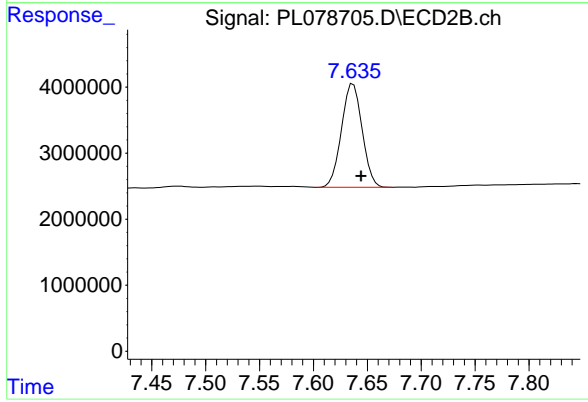


#23 Chlordane-1
 R.T.: 3.517 min
 Delta R.T.: -0.021 min
 Response: 173197
 Conc: 1.72 ng/ml



#28 Decachlorobiphenyl
R.T.: 8.772 min
Delta R.T.: -0.005 min
Response: 15457653
Conc: 10.28 ng/ml

Instrument :
ECD_L
ClientSampleId :



#28 Decachlorobiphenyl
R.T.: 7.637 min
Delta R.T.: -0.007 min
Response: 20944149
Conc: 11.06 ng/ml