

Data Path : Z:\pestpcbsrv\HPCHEM1\ECD_L\Data\PL110220\
 Data File : PL062755.D
 Signal(s) : Signal #1: ECD1A.ch Signal #2: ECD2B.ch
 Acq On : 02 Nov 2020 11:43
 Operator : DD\AJ
 Sample : L4222-04
 Misc :
 ALS Vial : 8 Sample Multiplier: 1

Instrument :
 ECD_L
 ClientSampleId :
 EO-02-102920

Integration File signal 1: autoint1.e
 Integration File signal 2: autoint2.e
 Quant Time: Nov 03 03:00:10 2020
 Quant Method : Z:\pestpcbsrv\HPCHEM1\ECD_L\methods\PL102120.M
 Quant Title : GC Extractables
 QLast Update : Thu Oct 22 04:25:31 2020
 Response via : Initial Calibration
 Integrator: ChemStation

Volume Inj. : 1 µl
 Signal #1 Phase : ZB-MR2 Signal #2 Phase: ZB-MR1
 Signal #1 Info : 30M x 0.32mm x0.2 Signal #2 Info : 30M x 0.32mm x0.5µm

	Compound	RT#1	RT#2	Resp#1	Resp#2	ng/ml	ng/ml

System Monitoring Compounds							
1)	SA Tetrachlo...	3.411	3.951	26215263	42083794	15.241	14.320
28)	SA Decachlor...	8.128	8.993	24427064	33143625	15.226	15.836
Target Compounds							
7)	B delta-BHC	0.000	4.999	0	6232371	N.D.	1.781 #
8)	B Heptachlo...	5.100	5.826	3511654	13558978	1.925	4.187 #
11)	B alpha-Chl...	0.000	6.118	0	4980960	N.D.	1.479 #
12)	B 4,4'-DDE	5.552	6.274	876522	7754670	0.530	2.407 #
15)	B Endosulfa...	0.000	6.870f	0	2400585	N.D.	0.840 #
19)	B Endosulfa...	6.570f	0.000	761896	0	0.462	N.D. #
21)	B Endrin ke...	7.083	0.000	3811191	0	2.114	N.D. #
23)	Chlordane-1	4.262	4.909f	969281	553453	18.803	5.514 #
26)	Chlordane-4	0.000	6.118	0	4980960	N.D.	10.285 #

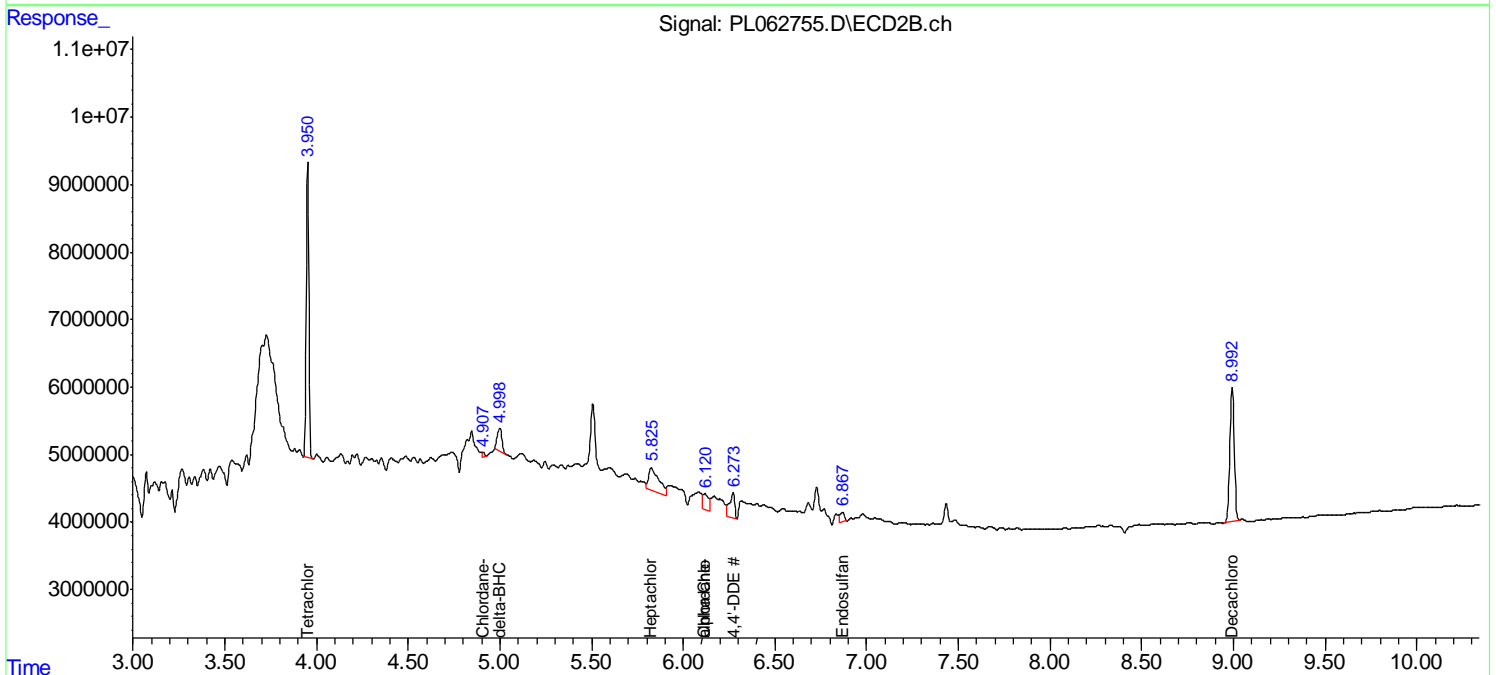
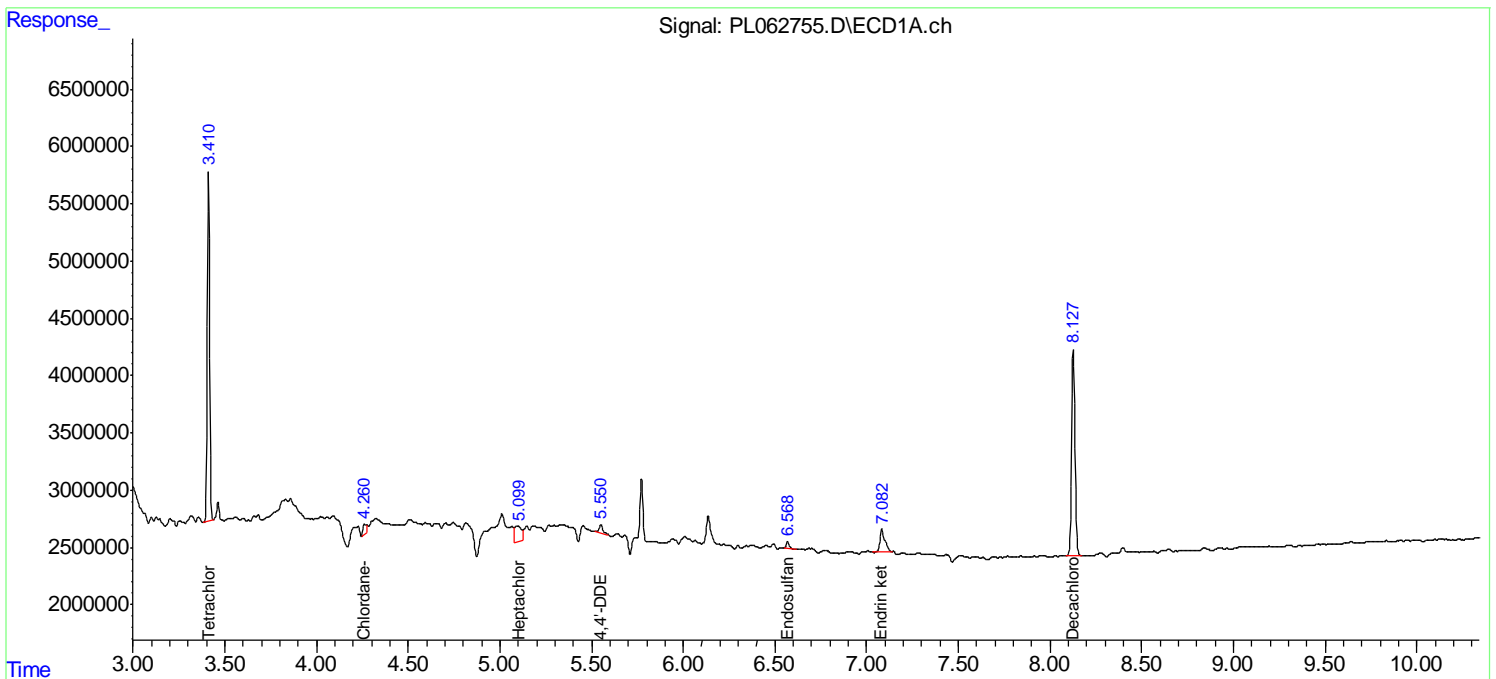
(f)=RT Delta > 1/2 Window (#)=Amounts differ by > 25% (m)=manual int.

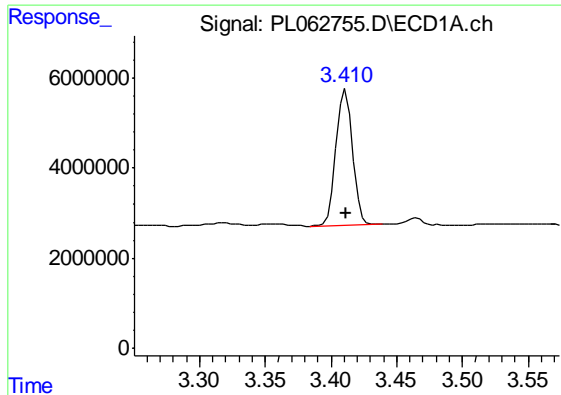
Data Path : Z:\pestpcbsrv\HPCHEM1\ECD_L\Data\PL110220\
 Data File : PL062755.D
 Signal(s) : Signal #1: ECD1A.ch Signal #2: ECD2B.ch
 Acq On : 02 Nov 2020 11:43
 Operator : DD\AJ
 Sample : L4222-04
 Misc :
 ALS Vial : 8 Sample Multiplier: 1

Instrument :
 ECD_L
 ClientSampled :
 EO-02-102920

Integration File signal 1: autoint1.e
 Integration File signal 2: autoint2.e
 Quant Time: Nov 03 03:00:10 2020
 Quant Method : Z:\pestpcbsrv\HPCHEM1\ECD_L\methods\PL102120.M
 Quant Title : GC Extractables
 QLast Update : Thu Oct 22 04:25:31 2020
 Response via : Initial Calibration
 Integrator: ChemStation

Volume Inj. : 1 µl
 Signal #1 Phase : ZB-MR2 Signal #2 Phase: ZB-MR1
 Signal #1 Info : 30M x 0.32mm x0.2 Signal #2 Info : 30M x 0.32mm x0.5µm

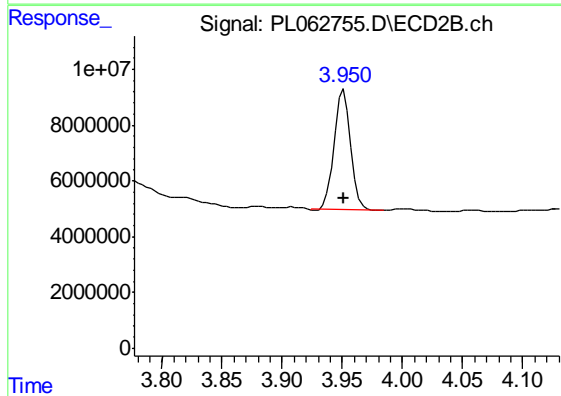




#1 Tetrachloro-m-xylene

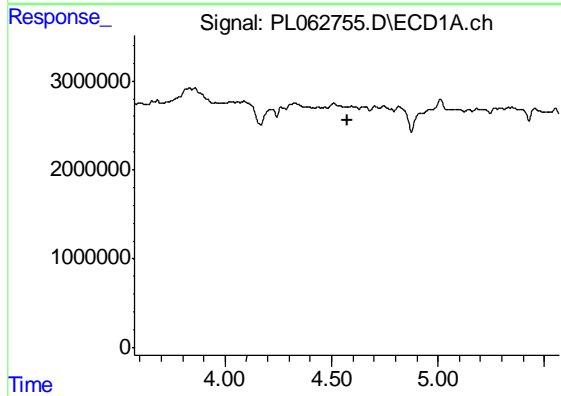
R.T.: 3.411 min
 Delta R.T.: 0.000 min
 Response: 26215263
 Conc: 15.24 ng/ml

Instrument :
 ECD_L
 ClientSampleId :
 EO-02-102920



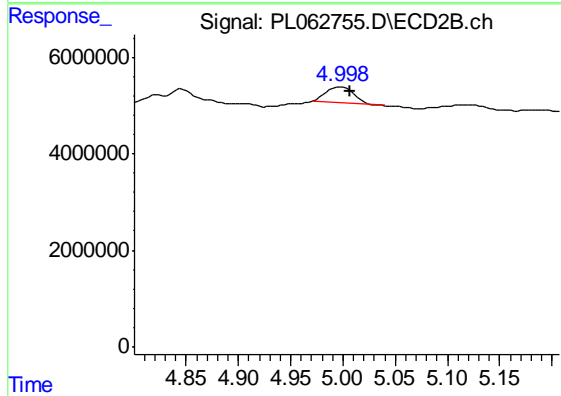
#1 Tetrachloro-m-xylene

R.T.: 3.951 min
 Delta R.T.: 0.000 min
 Response: 42083794
 Conc: 14.32 ng/ml



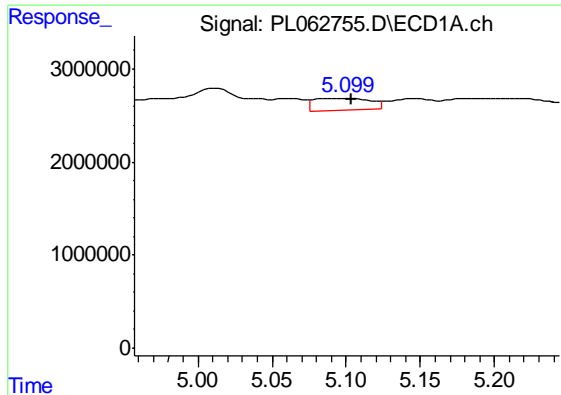
#7 delta-BHC

R.T.: 0.000 min
 Exp R.T. : 4.573 min
 Response: 0
 Conc: N.D.



#7 delta-BHC

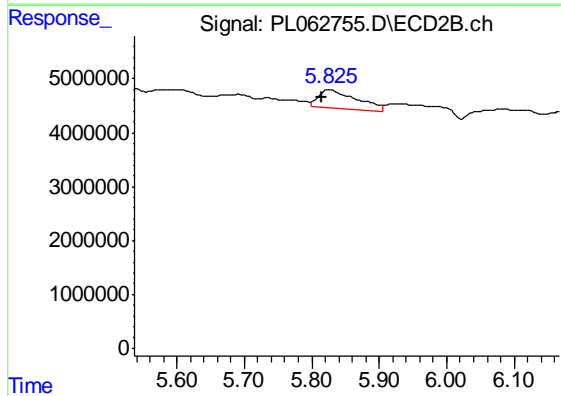
R.T.: 4.999 min
 Delta R.T.: -0.008 min
 Response: 6232371
 Conc: 1.78 ng/ml



#8 Heptachlor epoxide

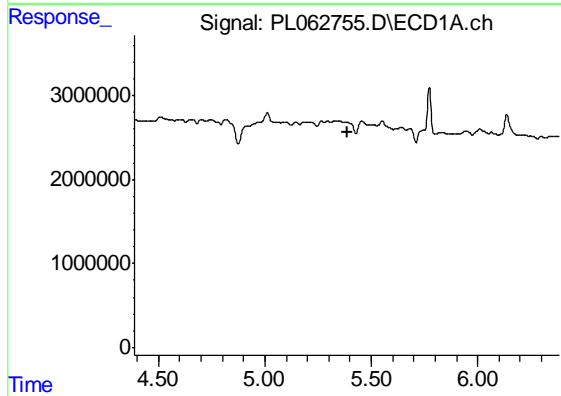
R.T.: 5.100 min
 Delta R.T.: -0.003 min
 Response: 3511654
 Conc: 1.92 ng/ml

Instrument :
 ECD_L
 ClientSampleId :
 EO-02-102920



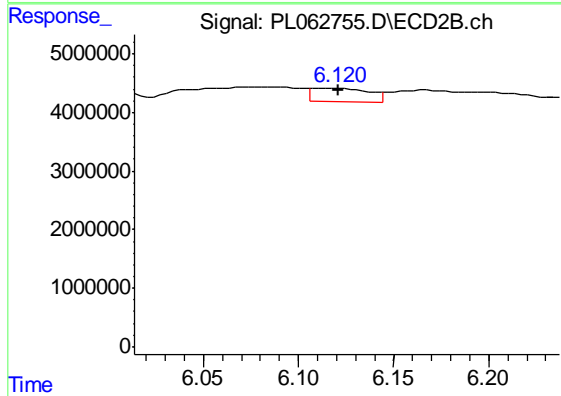
#8 Heptachlor epoxide

R.T.: 5.826 min
 Delta R.T.: 0.012 min
 Response: 13558978
 Conc: 4.19 ng/ml



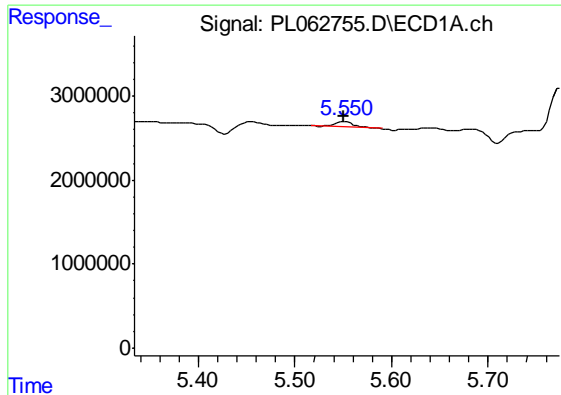
#11 alpha-Chlordane

R.T.: 0.000 min
 Exp R.T. : 5.386 min
 Response: 0
 Conc: N.D.



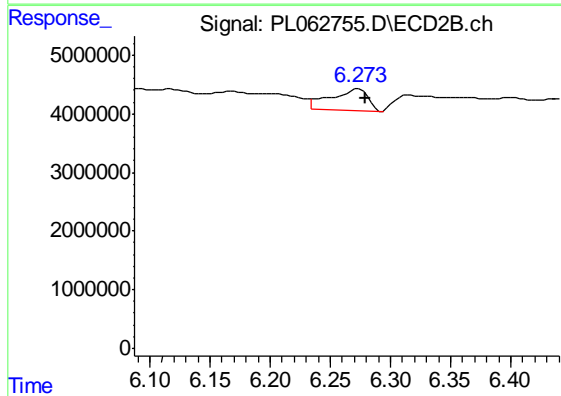
#11 alpha-Chlordane

R.T.: 6.118 min
 Delta R.T.: -0.003 min
 Response: 4980960
 Conc: 1.48 ng/ml

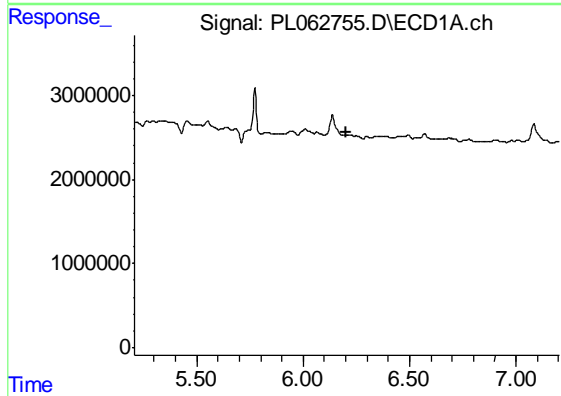


#12 4,4'-DDE
 R.T.: 5.552 min
 Delta R.T.: 0.001 min
 Response: 876522
 Conc: 0.53 ng/ml

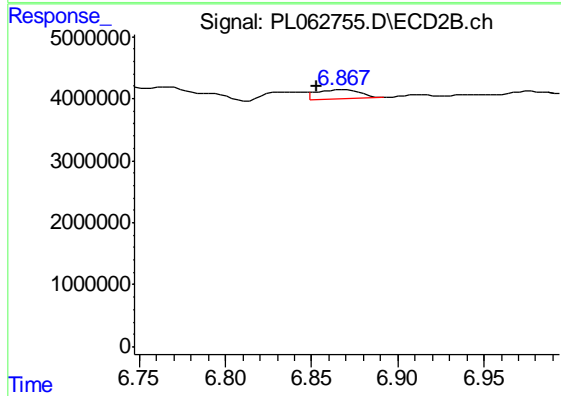
Instrument :
 ECD_L
 ClientSampled :
 EO-02-102920



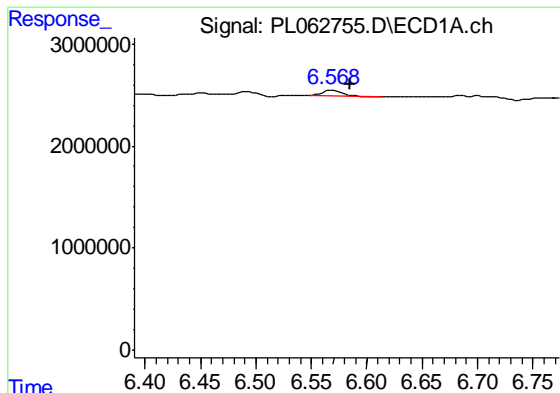
#12 4,4'-DDE
 R.T.: 6.274 min
 Delta R.T.: -0.005 min
 Response: 7754670
 Conc: 2.41 ng/ml



#15 Endosulfan II
 R.T.: 0.000 min
 Exp R.T. : 6.205 min
 Response: 0
 Conc: N.D.

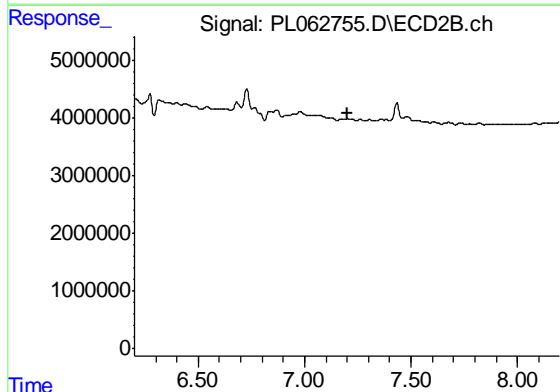


#15 Endosulfan II
 R.T.: 6.870 min
 Delta R.T.: 0.017 min
 Response: 2400585
 Conc: 0.84 ng/ml

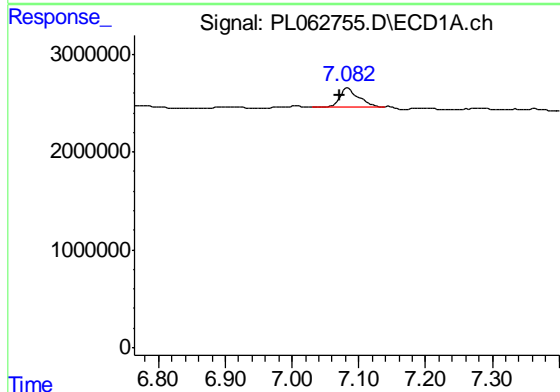


#19 Endosulfan Sulfate
 R.T.: 6.570 min
 Delta R.T.: -0.015 min
 Response: 761896
 Conc: 0.46 ng/ml

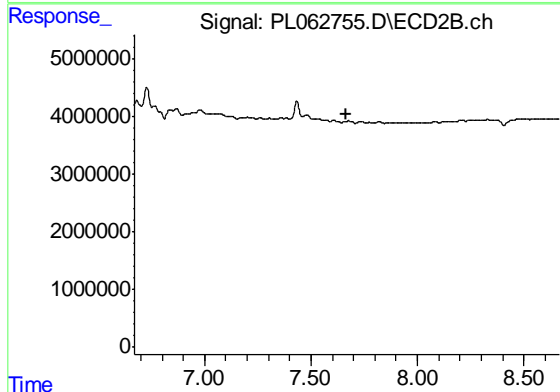
Instrument :
 ECD_L
ClientSampleId :
 EO-02-102920



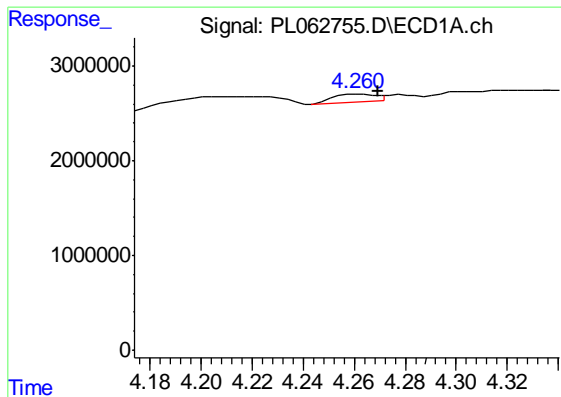
#19 Endosulfan Sulfate
 R.T.: 0.000 min
 Exp R.T. : 7.199 min
 Response: 0
 Conc: N.D.



#21 Endrin ketone
 R.T.: 7.083 min
 Delta R.T.: 0.012 min
 Response: 3811191
 Conc: 2.11 ng/ml



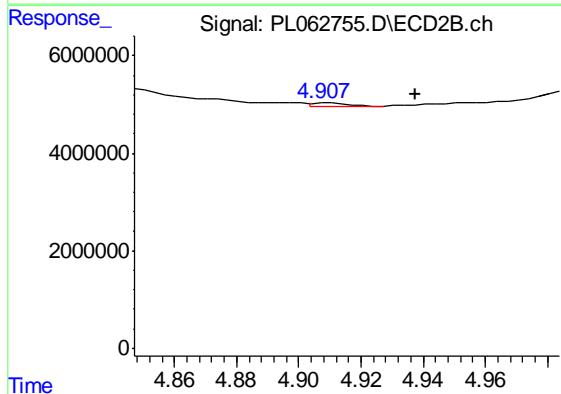
#21 Endrin ketone
 R.T.: 0.000 min
 Exp R.T. : 7.668 min
 Response: 0
 Conc: N.D.



#23 Chlordane-1

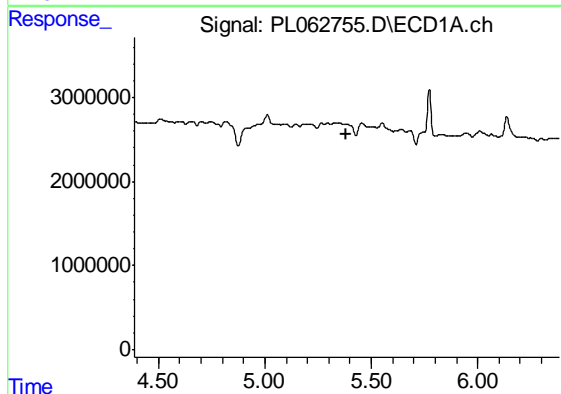
R.T.: 4.262 min
 Delta R.T.: -0.007 min
 Response: 969281
 Conc: 18.80 ng/ml

Instrument :
 ECD_L
 ClientSampleId :
 EO-02-102920



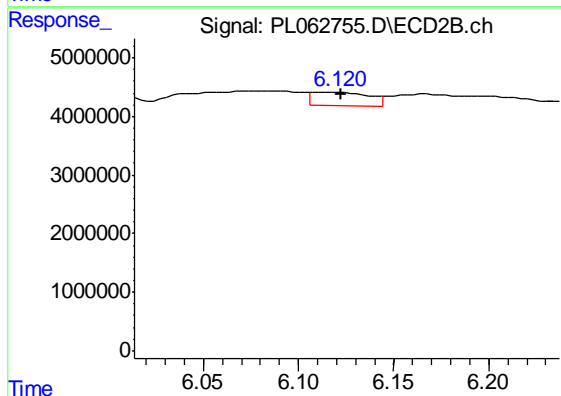
#23 Chlordane-1

R.T.: 4.909 min
 Delta R.T.: -0.028 min
 Response: 553453
 Conc: 5.51 ng/ml



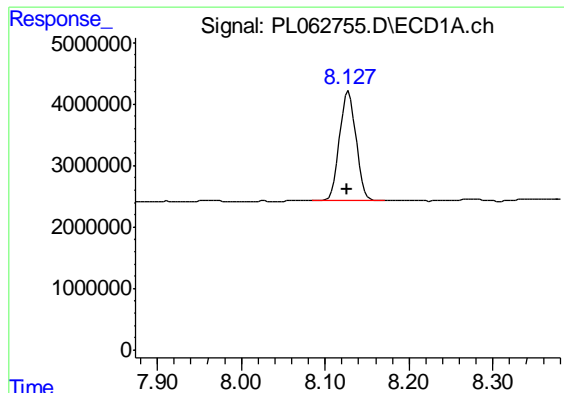
#26 Chlordane-4

R.T.: 0.000 min
 Exp R.T. : 5.385 min
 Response: 0
 Conc: N.D.



#26 Chlordane-4

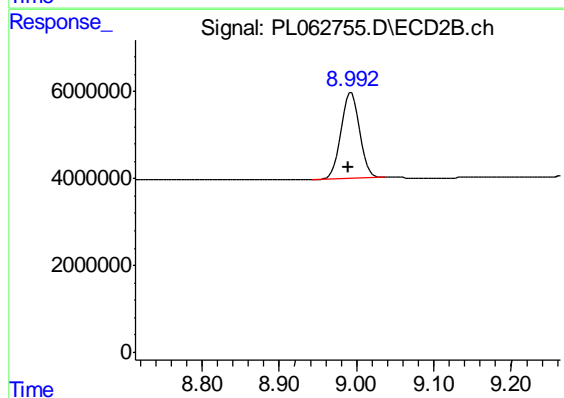
R.T.: 6.118 min
 Delta R.T.: -0.005 min
 Response: 4980960
 Conc: 10.29 ng/ml



#28 Decachlorobiphenyl

R.T.: 8.128 min
Delta R.T.: 0.002 min
Response: 24427064
Conc: 15.23 ng/ml

Instrument :
ECD_L
ClientSampleId :
EO-02-102920



#28 Decachlorobiphenyl

R.T.: 8.993 min
Delta R.T.: 0.004 min
Response: 33143625
Conc: 15.84 ng/ml