

Data Path : Z:\pestpcbsrv\HPCHEM1\ECD_L\Data\PL110320\
 Data File : PL062800.D
 Signal(s) : Signal #1: ECD1A.ch Signal #2: ECD2B.ch
 Acq On : 03 Nov 2020 13:02
 Operator : DD\AJ
 Sample : L4600-09
 Misc :
 ALS Vial : 9 Sample Multiplier: 1

Instrument :
 ECD_L
 ClientSampleId :

Integration File signal 1: autoint1.e
 Integration File signal 2: autoint2.e
 Quant Time: Nov 03 17:02:21 2020
 Quant Method : Z:\pestpcbsrv\HPCHEM1\ECD_L\methods\PL102120.M
 Quant Title : GC Extractables
 QLast Update : Thu Oct 22 04:25:31 2020
 Response via : Initial Calibration
 Integrator: ChemStation

Volume Inj. : 1 µl
 Signal #1 Phase : ZB-MR1 Signal #2 Phase: ZB-MR1
 Signal #1 Info : 30M x 0.32mm x0.2 Signal #2 Info : 30M x 0.32mm x0.5µm

Compound	RT#1	RT#2	Resp#1	Resp#2	ng/ml	ng/ml

System Monitoring Compounds						
1) SA Tetrachlo...	3.411	3.951	26029534	40724495	15.133	13.858
28) SA Decachlor...	8.126	8.991	32063281	32955520	19.986	15.746
Target Compounds						
2) A alpha-BHC	0.000	4.362f	0	5928622	N.D.	1.334 #
5) MB Aldrin	4.659	5.423	1376615	2689780	0.721	0.743
8) B Heptachlo...	5.093	0.000	1635128	0	0.896	N.D. #
9) A Endosulfan I	5.462f	6.162	4207497	14890428	2.517	4.721 #
10) B gamma-Chl...	0.000	6.050	0	18749434	N.D.	5.570 #
11) B alpha-Chl...	0.000	6.122	0	19085354	N.D.	5.665 #
12) B 4,4'-DDE	5.550	6.269	1279370	8631758	0.773	2.679 #
14) MA Endrin	5.937	0.000	1146998	0	0.689	N.D. #
17) MA 4,4'-DDT	6.300	7.066	1574489	3523521	1.180	1.569 #
18) B Endrin a...	6.342f	0.000	607895	0	0.419	N.D. #
20) A Methoxychlor	6.828f	0.000	1005341	0	1.167	N.D. #
23) Chlordane-1	4.268	0.000	4600872	0	89.251	N.D. #
24) Chlordane-2	0.000	5.423f	0	2689780	N.D.	24.669 #
25) Chlordane-3	0.000	6.050	0	18749434	N.D.	46.416 #
26) Chlordane-4	0.000	6.122	0	19085354	N.D.	39.409 #

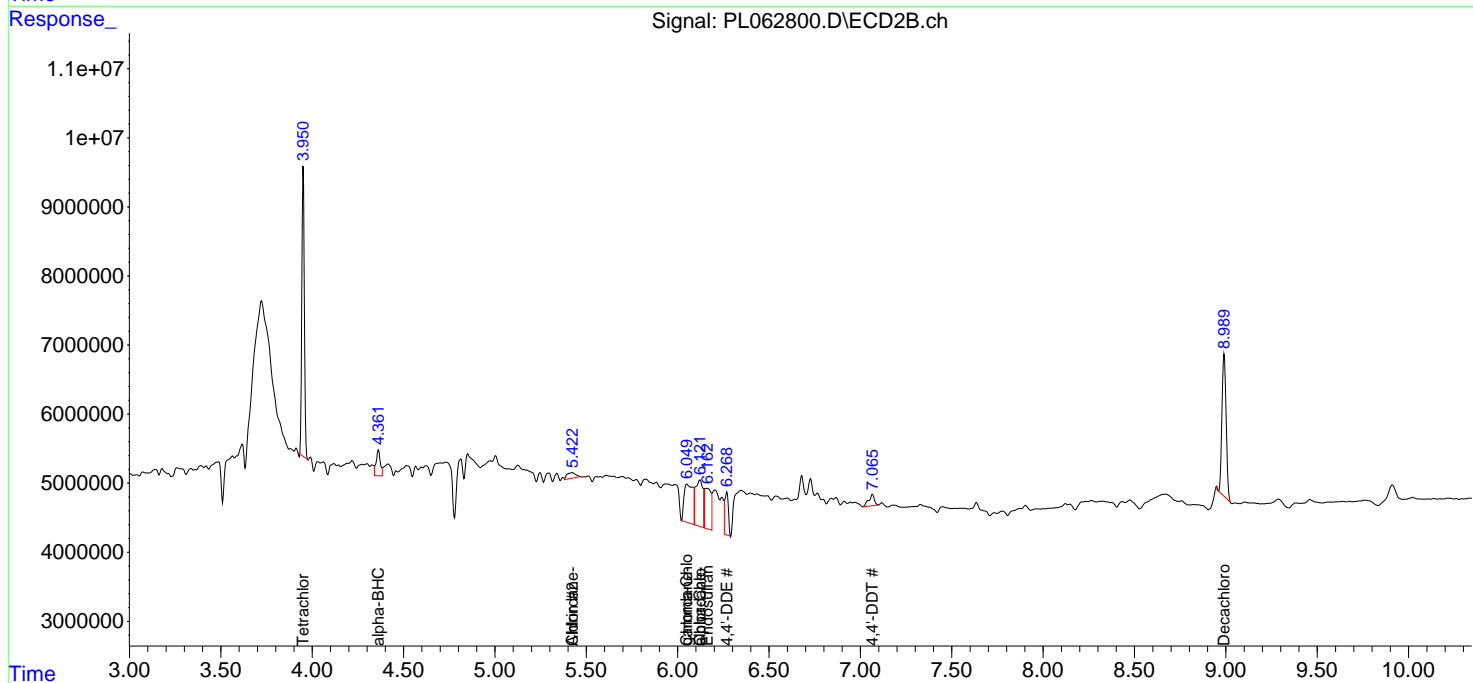
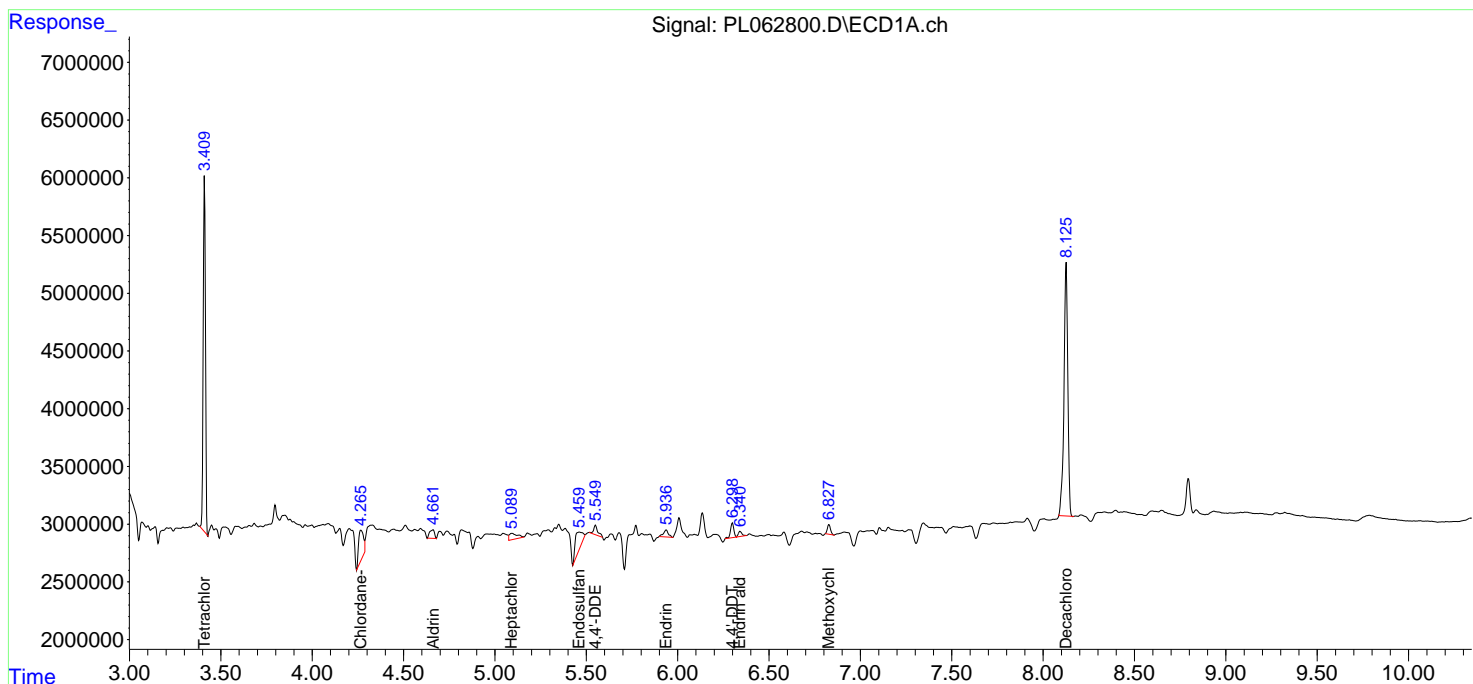
(f)=RT Delta > 1/2 Window (#)=Amounts differ by > 25% (m)=manual int.

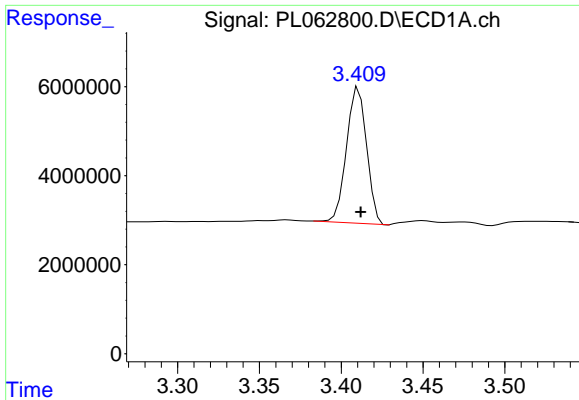
Data Path : Z:\pestpcbsrv\HPCHEM1\ECD_L\Data\PL110320\
 Data File : PL062800.D
 Signal(s) : Signal #1: ECD1A.ch Signal #2: ECD2B.ch
 Acq On : 03 Nov 2020 13:02
 Operator : DD\AJ
 Sample : L4600-09
 Misc :
 ALS Vial : 9 Sample Multiplier: 1

Instrument :
 ECD_L
 ClientSampled :

Integration File signal 1: autoint1.e
 Integration File signal 2: autoint2.e
 Quant Time: Nov 03 17:02:21 2020
 Quant Method : Z:\pestpcbsrv\HPCHEM1\ECD_L\methods\PL102120.M
 Quant Title : GC Extractables
 QLast Update : Thu Oct 22 04:25:31 2020
 Response via : Initial Calibration
 Integrator: ChemStation

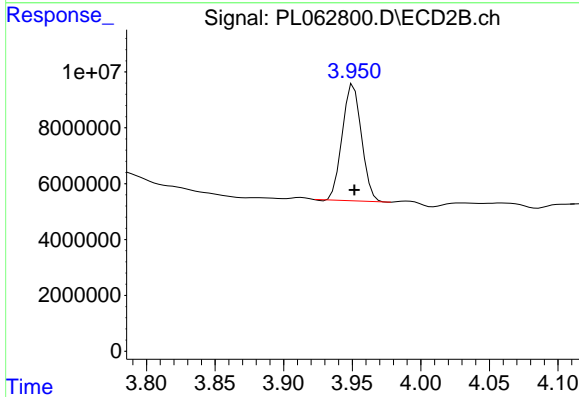
Volume Inj. : 1 µl
 Signal #1 Phase : ZB-MR2 Signal #2 Phase: ZB-MR1
 Signal #1 Info : 30M x 0.32mm x0.2 Signal #2 Info : 30M x 0.32mm x0.5µm



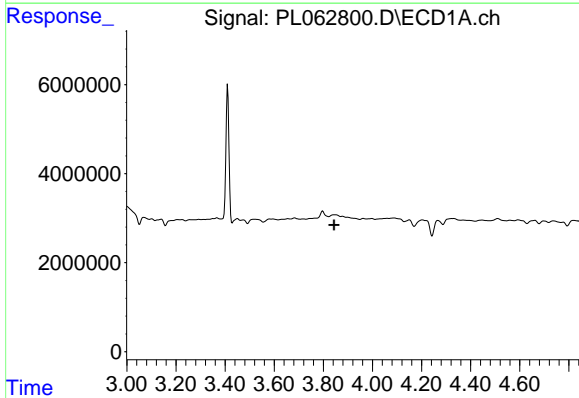


#1 Tetrachloro-m-xylene
 R.T.: 3.411 min
 Delta R.T.: -0.001 min
 Response: 26029534
 Conc: 15.13 ng/ml

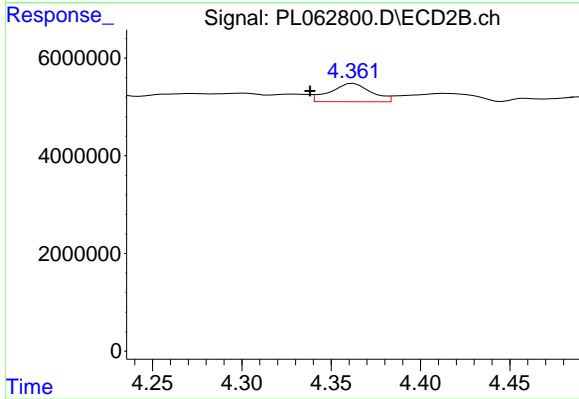
Instrument :
 ECD_L
 ClientSampled :



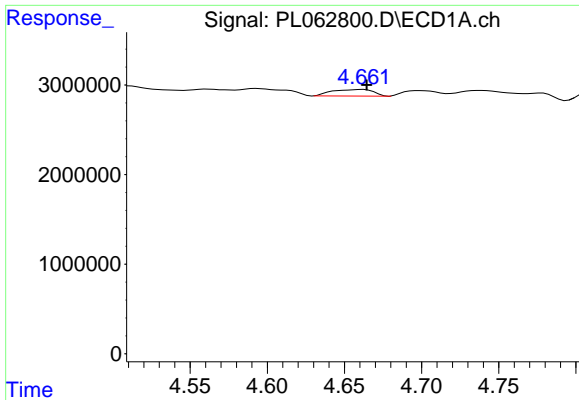
#1 Tetrachloro-m-xylene
 R.T.: 3.951 min
 Delta R.T.: 0.000 min
 Response: 40724495
 Conc: 13.86 ng/ml



#2 alpha-BHC
 R.T.: 0.000 min
 Exp R.T. : 3.844 min
 Response: 0
 Conc: N.D.

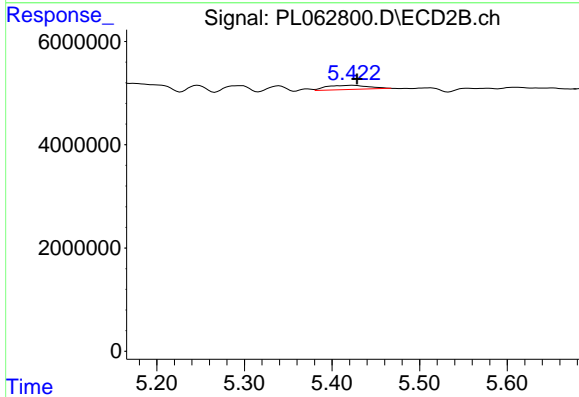


#2 alpha-BHC
 R.T.: 4.362 min
 Delta R.T.: 0.024 min
 Response: 5928622
 Conc: 1.33 ng/ml

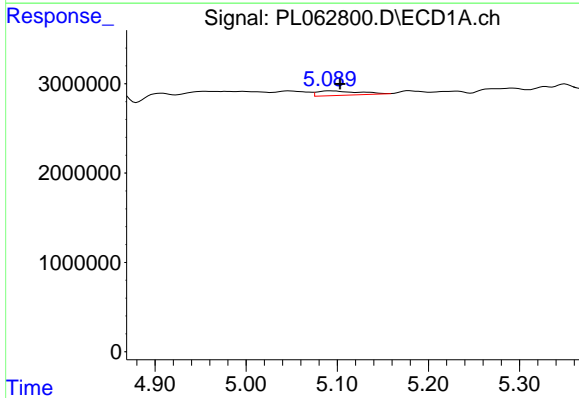


#5 Aldrin
 R.T.: 4.659 min
 Delta R.T.: -0.005 min
 Response: 1376615
 Conc: 0.72 ng/ml

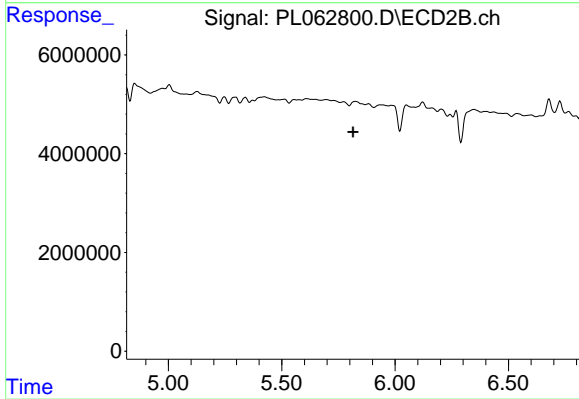
Instrument :
 ECD_L
 ClientSampled :



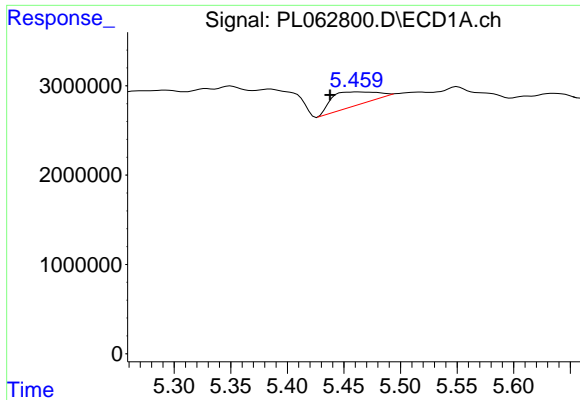
#5 Aldrin
 R.T.: 5.423 min
 Delta R.T.: -0.005 min
 Response: 2689780
 Conc: 0.74 ng/ml



#8 Heptachlor epoxide
 R.T.: 5.093 min
 Delta R.T.: -0.010 min
 Response: 1635128
 Conc: 0.90 ng/ml

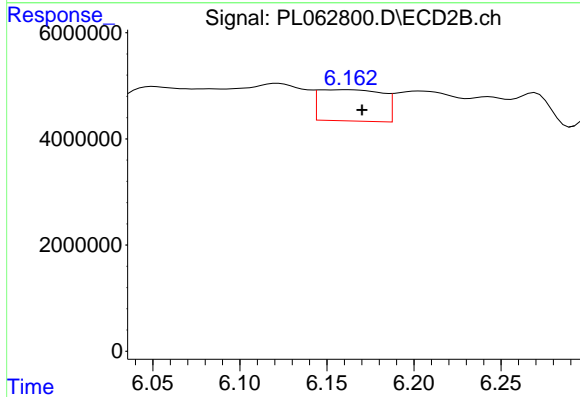


#8 Heptachlor epoxide
 R.T.: 0.000 min
 Exp R.T. : 5.815 min
 Response: 0
 Conc: N.D.

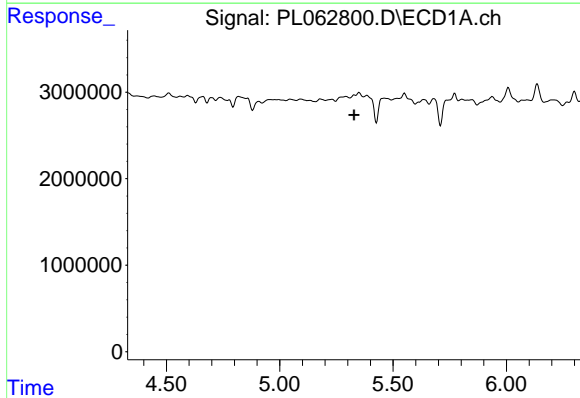


#9 Endosulfan I
 R.T.: 5.462 min
 Delta R.T.: 0.024 min
 Response: 4207497
 Conc: 2.52 ng/ml

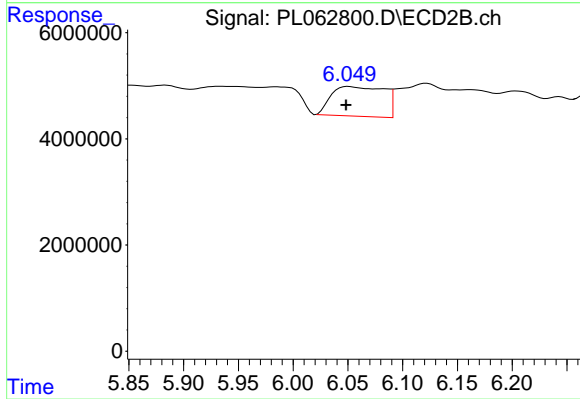
Instrument :
 ECD_L
 ClientSampleId :



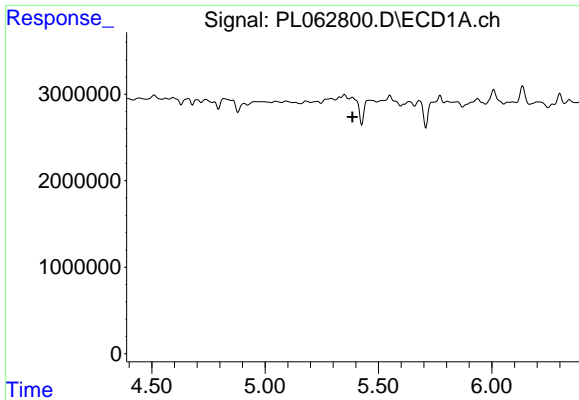
#9 Endosulfan I
 R.T.: 6.162 min
 Delta R.T.: -0.008 min
 Response: 14890428
 Conc: 4.72 ng/ml



#10 gamma-Chlordane
 R.T.: 0.000 min
 Exp R.T. : 5.328 min
 Response: 0
 Conc: N.D.

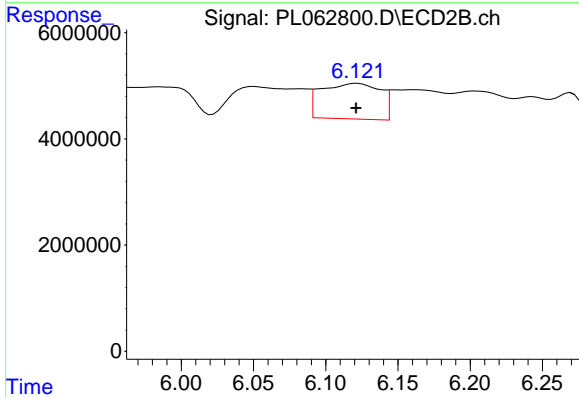


#10 gamma-Chlordane
 R.T.: 6.050 min
 Delta R.T.: 0.002 min
 Response: 18749434
 Conc: 5.57 ng/ml

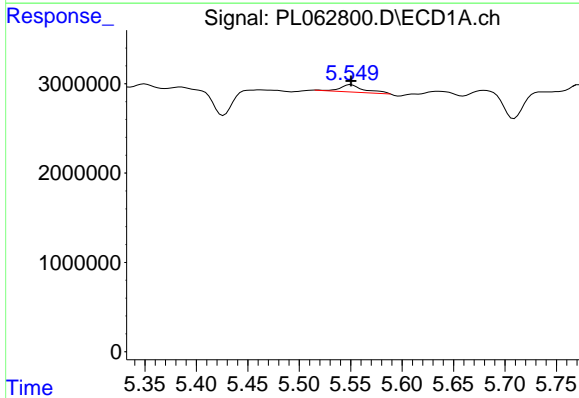


#11 alpha-Chlordane
 R.T.: 0.000 min
 Exp R.T.: 5.386 min
 Response: 0
 Conc: N.D.

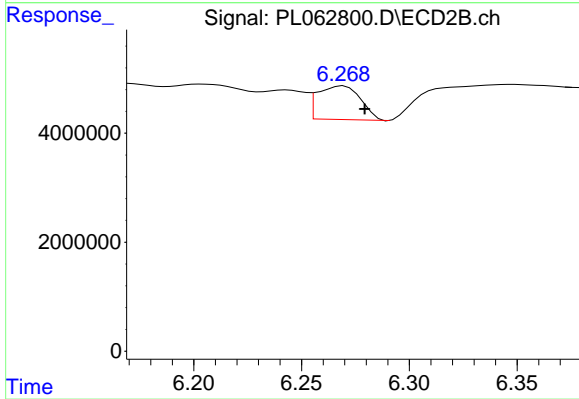
Instrument :
 ECD_L
 ClientSampleId :



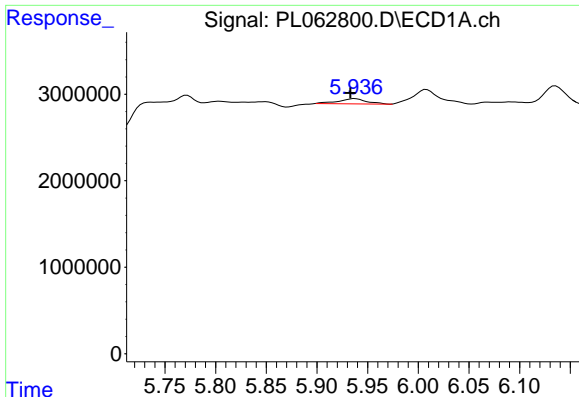
#11 alpha-Chlordane
 R.T.: 6.122 min
 Delta R.T.: 0.000 min
 Response: 19085354
 Conc: 5.67 ng/ml



#12 4,4'-DDE
 R.T.: 5.550 min
 Delta R.T.: 0.000 min
 Response: 1279370
 Conc: 0.77 ng/ml



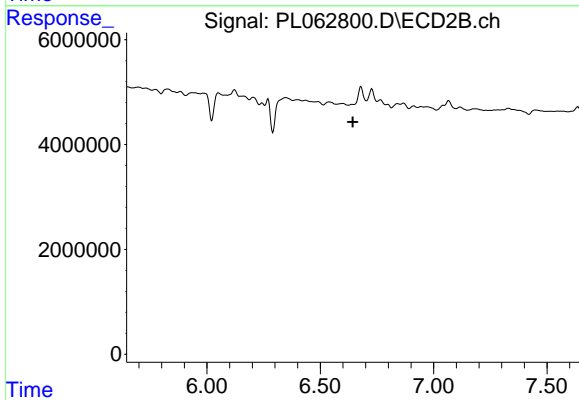
#12 4,4'-DDE
 R.T.: 6.269 min
 Delta R.T.: -0.010 min
 Response: 8631758
 Conc: 2.68 ng/ml



#14 Endrin

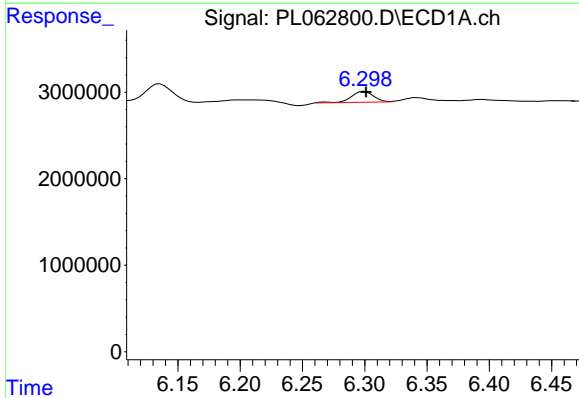
R.T.: 5.937 min
 Delta R.T.: 0.004 min
 Response: 1146998
 Conc: 0.69 ng/ml

Instrument :
 ECD_L
 ClientSampleId :



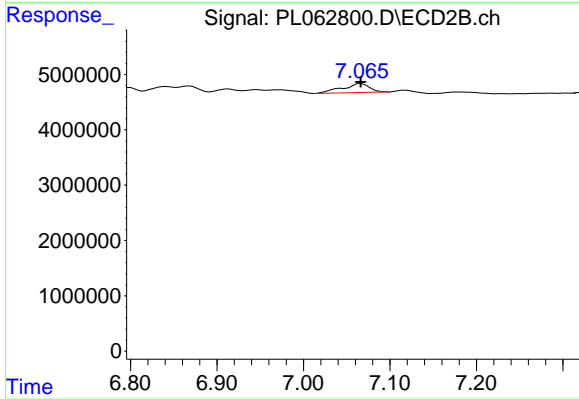
#14 Endrin

R.T.: 0.000 min
 Exp R.T. : 6.643 min
 Response: 0
 Conc: N.D.



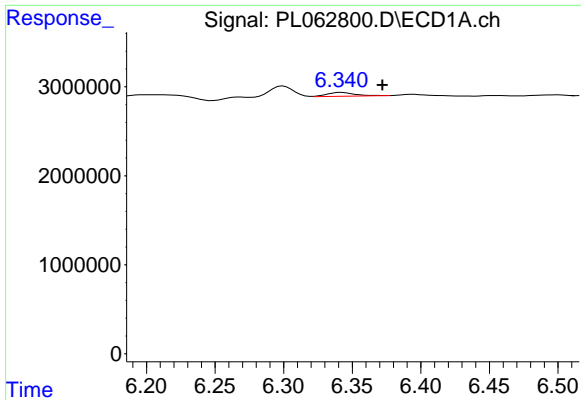
#17 4,4'-DDT

R.T.: 6.300 min
 Delta R.T.: -0.001 min
 Response: 1574489
 Conc: 1.18 ng/ml



#17 4,4'-DDT

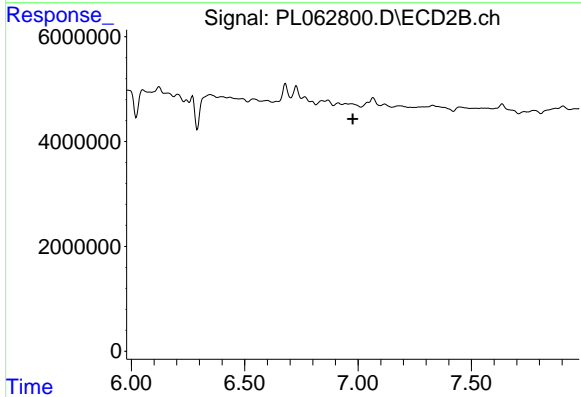
R.T.: 7.066 min
 Delta R.T.: 0.000 min
 Response: 3523521
 Conc: 1.57 ng/ml



#18 Endrin aldehyde

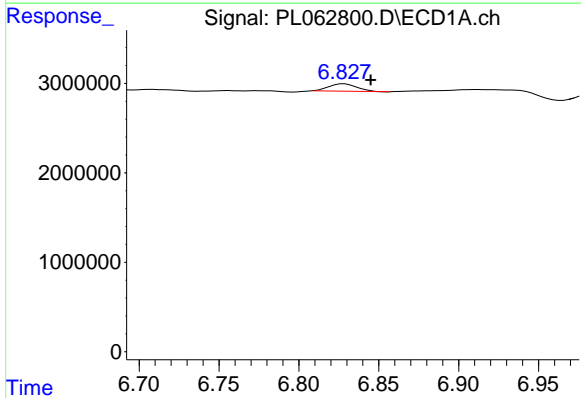
R.T.: 6.342 min
 Delta R.T.: -0.030 min
 Response: 607895
 Conc: 0.42 ng/ml

Instrument :
 ECD_L
 ClientSampleId :



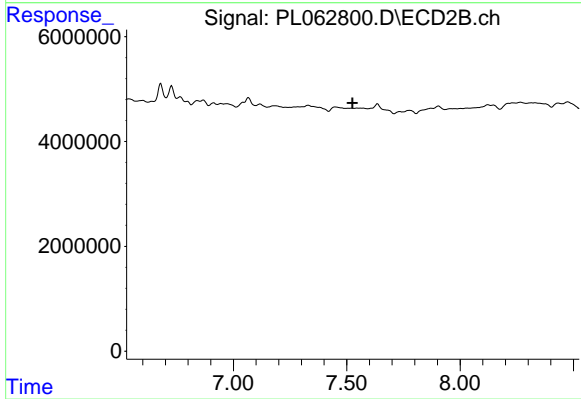
#18 Endrin aldehyde

R.T.: 0.000 min
 Exp R.T. : 6.976 min
 Response: 0
 Conc: N.D.



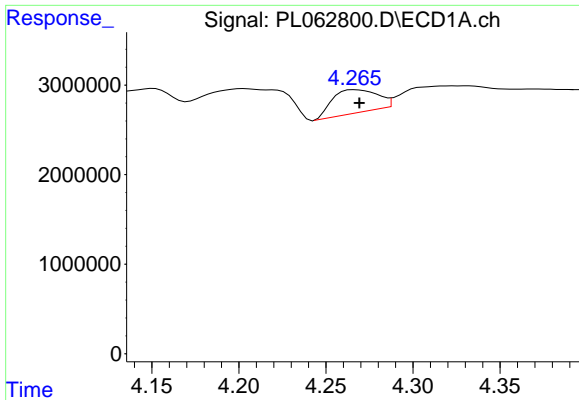
#20 Methoxychlor

R.T.: 6.828 min
 Delta R.T.: -0.017 min
 Response: 1005341
 Conc: 1.17 ng/ml



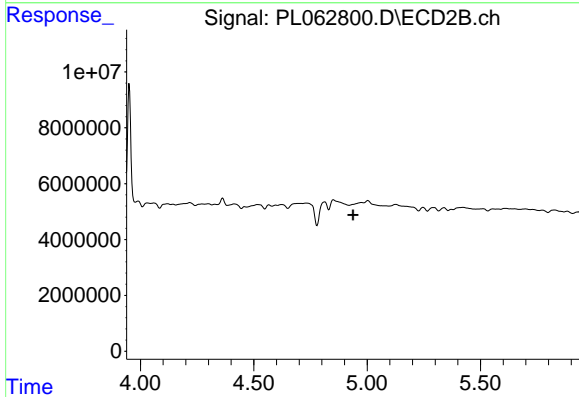
#20 Methoxychlor

R.T.: 0.000 min
 Exp R.T. : 7.526 min
 Response: 0
 Conc: N.D.

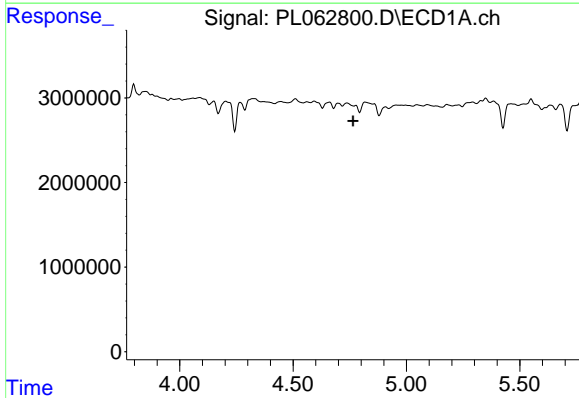


#23 Chlordane-1
 R.T.: 4.268 min
 Delta R.T.: 0.000 min
 Response: 4600872
 Conc: 89.25 ng/ml

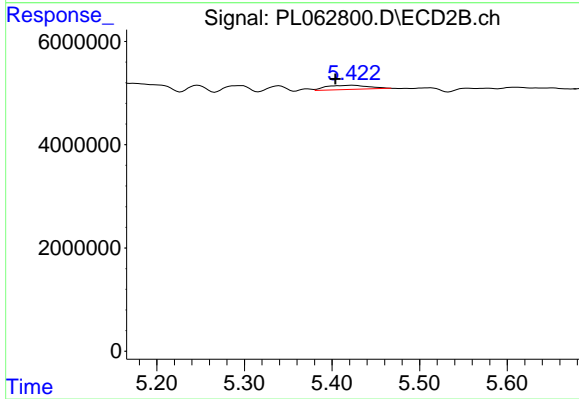
Instrument :
 ECD_L
 ClientSampled :



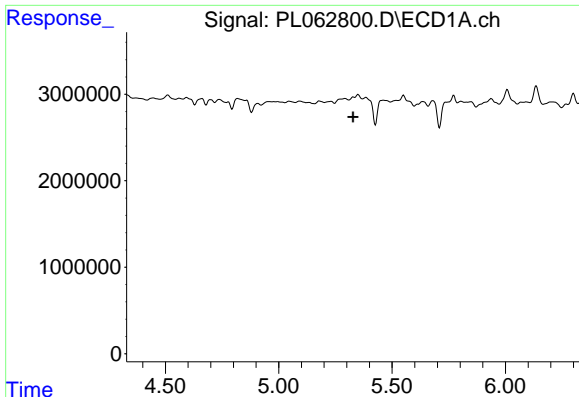
#23 Chlordane-1
 R.T.: 0.000 min
 Exp R.T. : 4.938 min
 Response: 0
 Conc: N.D.



#24 Chlordane-2
 R.T.: 0.000 min
 Exp R.T. : 4.765 min
 Response: 0
 Conc: N.D.



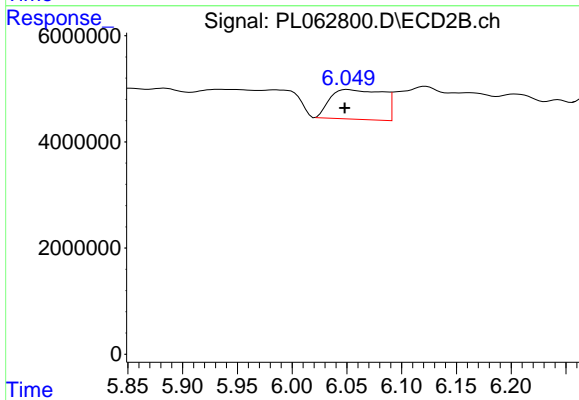
#24 Chlordane-2
 R.T.: 5.423 min
 Delta R.T.: 0.020 min
 Response: 2689780
 Conc: 24.67 ng/ml



#25 Chlordane-3

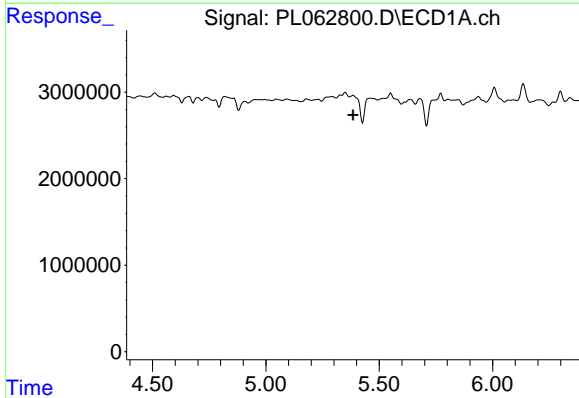
R.T.: 0.000 min
 Exp R.T. : 5.328 min
 Response: 0
 Conc: N.D.

Instrument :
 ECD_L
 ClientSampleId :



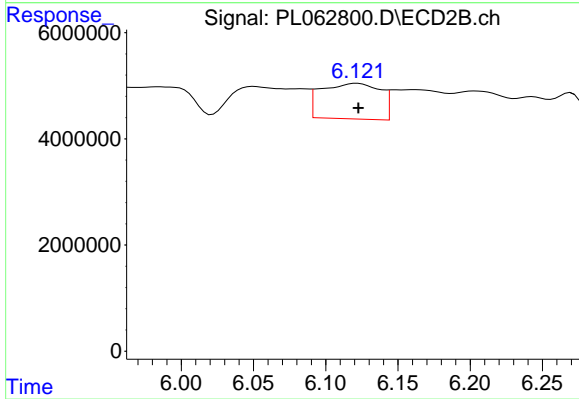
#25 Chlordane-3

R.T.: 6.050 min
 Delta R.T.: 0.002 min
 Response: 18749434
 Conc: 46.42 ng/ml



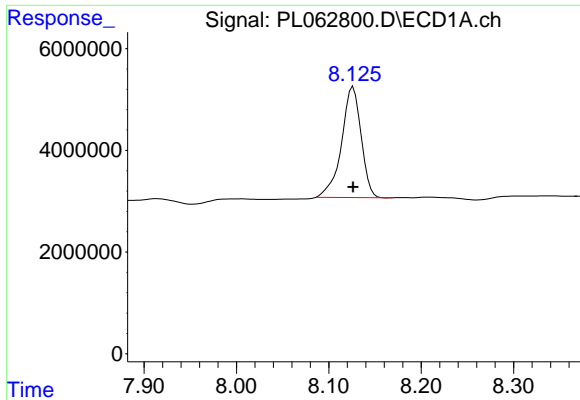
#26 Chlordane-4

R.T.: 0.000 min
 Exp R.T. : 5.385 min
 Response: 0
 Conc: N.D.



#26 Chlordane-4

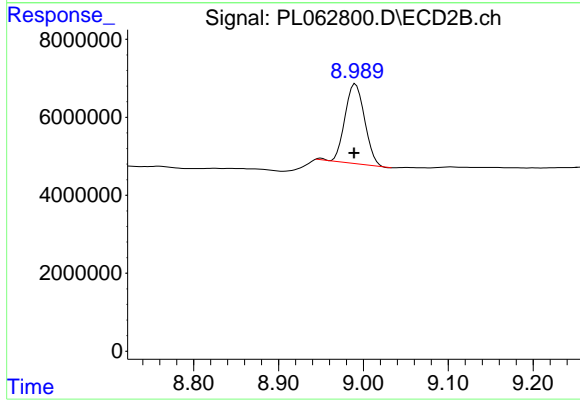
R.T.: 6.122 min
 Delta R.T.: 0.000 min
 Response: 19085354
 Conc: 39.41 ng/ml



#28 Decachlorobiphenyl

R.T.: 8.126 min
Delta R.T.: 0.000 min
Response: 32063281
Conc: 19.99 ng/ml

Instrument :
ECD_L
ClientSampleId :



#28 Decachlorobiphenyl

R.T.: 8.991 min
Delta R.T.: 0.002 min
Response: 32955520
Conc: 15.75 ng/ml