

Data Path : Z:\pestpcbsrv\HPCHEM1\ECD\_L\Data\PL110321\  
 Data File : PL070755.D  
 Signal(s) : Signal #1: ECD1A.ch Signal #2: ECD2B.ch  
 Acq On : 03 Nov 2021 23:21  
 Operator : AR\AJ  
 Sample : PTOXICC100  
 Misc :  
 ALS Vial : 19 Sample Multiplier: 1

Instrument :  
 ECD\_L  
 ClientSampleId :

Integration File signal 1: autoint1.e  
 Integration File signal 2: autoint2.e  
 Quant Time: Nov 04 19:19:07 2021  
 Quant Method : Z:\pestpcbsrv\HPCHEM1\ECD\_L\methods\LTX110321.M  
 Quant Title : GC Extractables  
 QLast Update : Thu Nov 04 19:17:47 2021  
 Response via : Initial Calibration  
 Integrator: ChemStation

Volume Inj. : 2 µl  
 Signal #1 Phase : Rtx-CLPesticide 1 Signal #2 Phase: Rtx-CLPesticide 1  
 Signal #1 Info : 30M x 0.32mm x0.3 Signal #2 Info : 30M x 0.32mm x 0.25µm

Compound	RT#1	RT#2	Resp#1	Resp#2	ng/ml	ng/ml
-----						
System Monitoring Compounds						
1) SA Tetrachlo...	4.567	5.501	5064210	13137795	10.698	10.460
7) SA Decachlor...	10.329	11.391	7791932	14587576	11.938	10.779
Target Compounds						
2) Toxaphene-1	7.661	8.546	309887	1253048	101.946	138.829 #
3) Toxaphene-2	7.834	8.863	473671	930530	108.499	104.680
4) Toxaphene-3	8.334	9.303	1150754	1246129	107.010	112.360
5) Toxaphene-4	8.981	9.518	987682	441232	107.661	107.026
6) Toxaphene-5	9.118	9.917	1568943	1613738	110.117	94.223
-----						

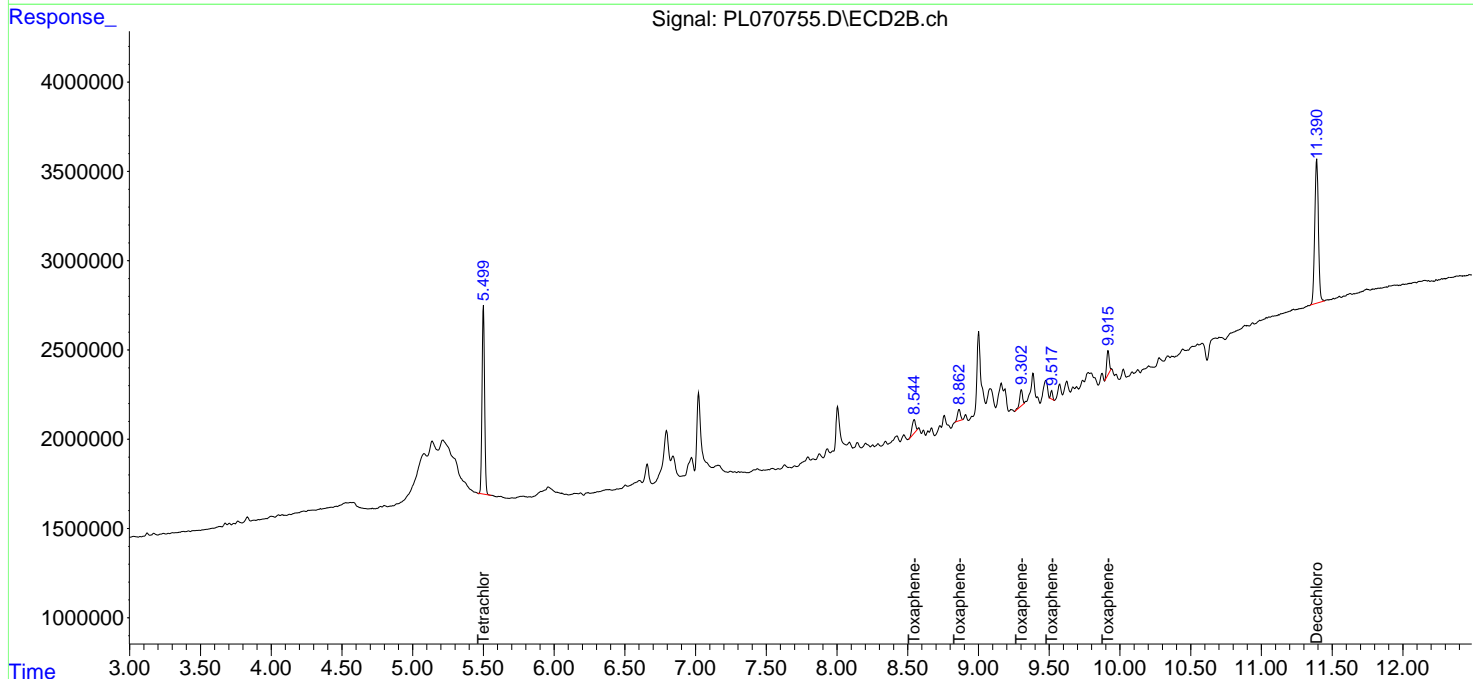
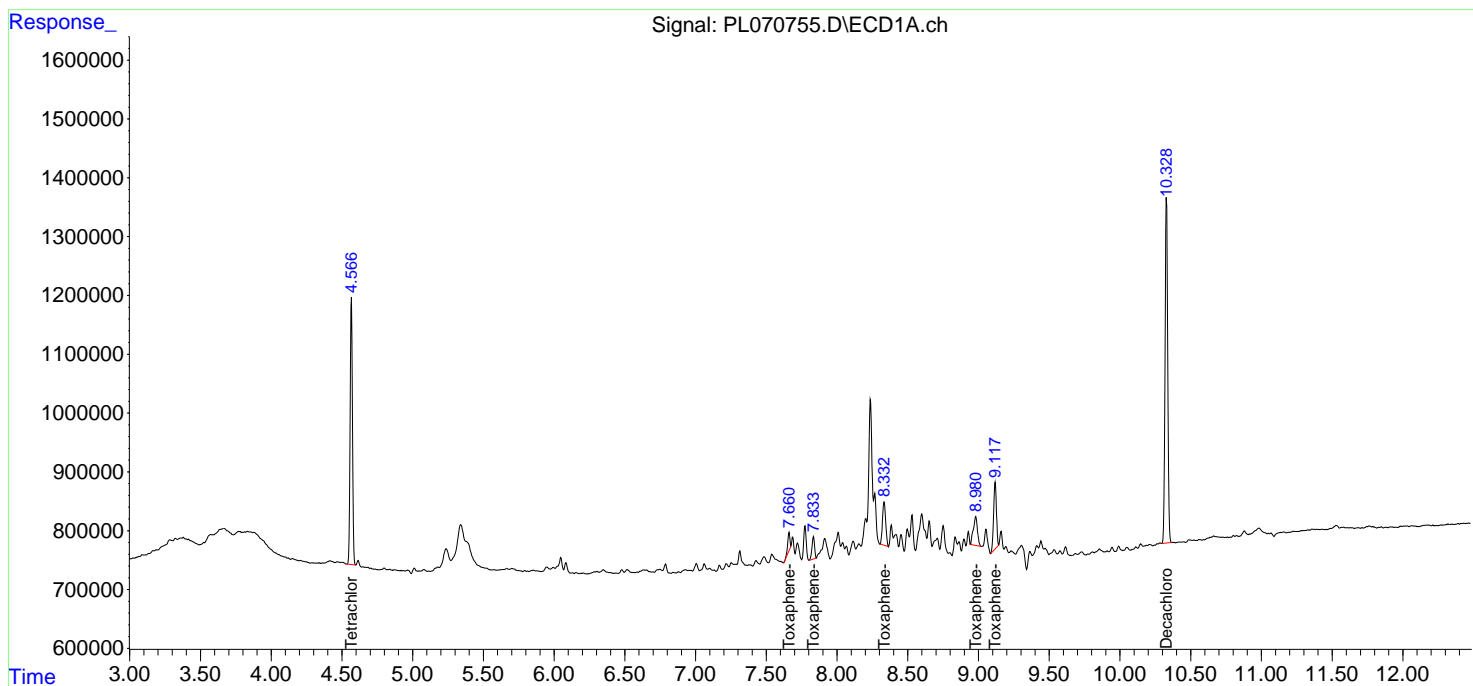
(f)=RT Delta > 1/2 Window (#)=Amounts differ by > 25% (m)=manual int.

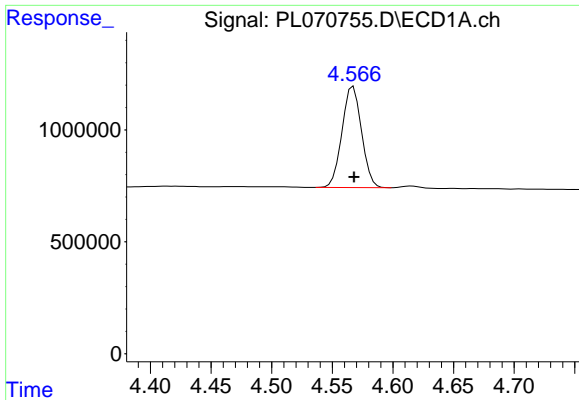
Data Path : Z:\pestpcbsrv\HPCHEM1\ECD\_L\Data\PL110321\  
 Data File : PL070755.D  
 Signal(s) : Signal #1: ECD1A.ch Signal #2: ECD2B.ch  
 Acq On : 03 Nov 2021 23:21  
 Operator : AR\AJ  
 Sample : PTOXICC100  
 Misc :  
 ALS Vial : 19 Sample Multiplier: 1

Instrument :  
 ECD\_L  
 ClientSampleId :

Integration File signal 1: autoint1.e  
 Integration File signal 2: autoint2.e  
 Quant Time: Nov 04 19:19:07 2021  
 Quant Method : Z:\pestpcbsrv\HPCHEM1\ECD\_L\methods\LTX110321.M  
 Quant Title : GC Extractables  
 QLast Update : Thu Nov 04 19:17:47 2021  
 Response via : Initial Calibration  
 Integrator: ChemStation

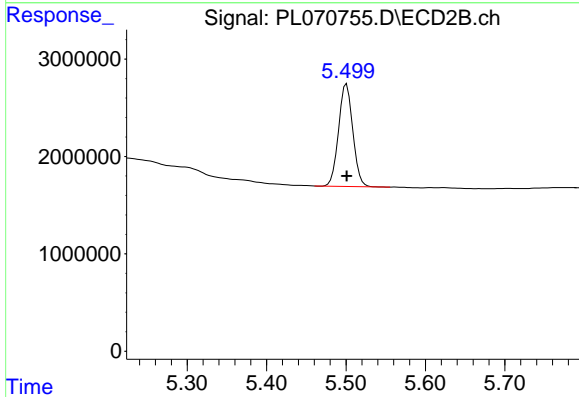
Volume Inj. : 2 µl  
 Signal #1 Phase : Rtx-CLPesticide 1 Signal #2 Phase: Rtx-CLPesticide 1  
 Signal #1 Info : 30M x 0.32mm x0.3 Signal #2 Info : 30M x 0.32mm x 0.25µm



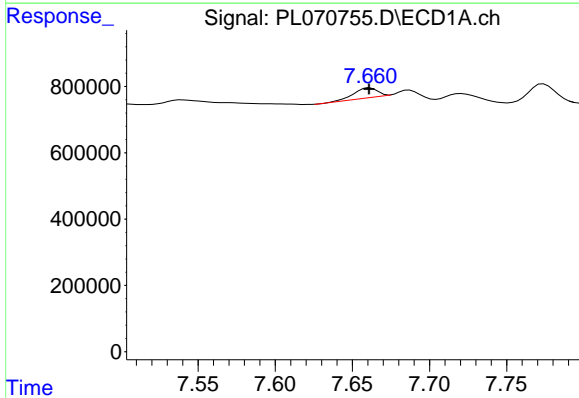


#1 Tetrachloro-m-xylene  
 R.T.: 4.567 min  
 Delta R.T.: 0.000 min  
 Response: 5064210  
 Conc: 10.70 ng/ml

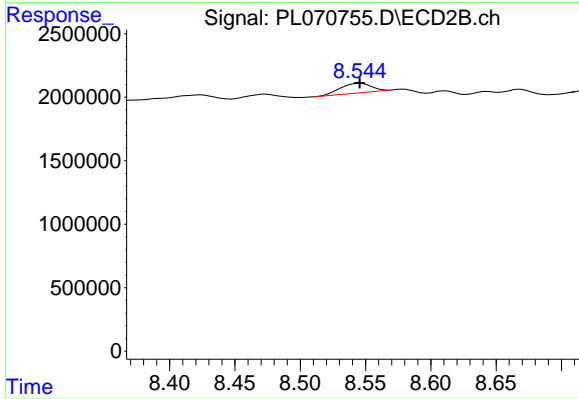
Instrument :  
 ECD\_L  
 ClientSampleId :



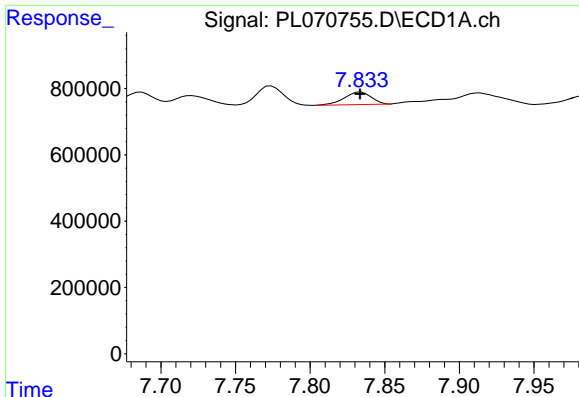
#1 Tetrachloro-m-xylene  
 R.T.: 5.501 min  
 Delta R.T.: 0.000 min  
 Response: 13137795  
 Conc: 10.46 ng/ml



#2 Toxaphene-1  
 R.T.: 7.661 min  
 Delta R.T.: 0.000 min  
 Response: 309887  
 Conc: 101.95 ng/ml



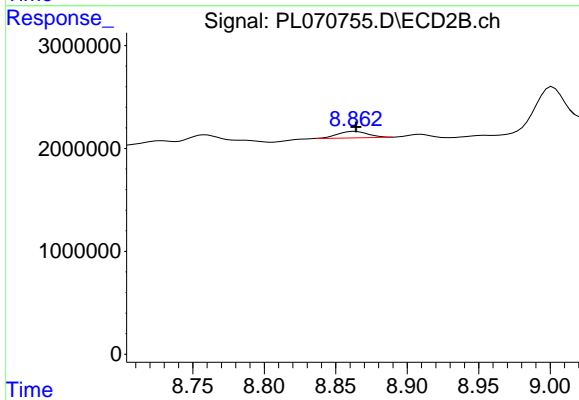
#2 Toxaphene-1  
 R.T.: 8.546 min  
 Delta R.T.: 0.000 min  
 Response: 1253048  
 Conc: 138.83 ng/ml



#3 Toxaphene-2

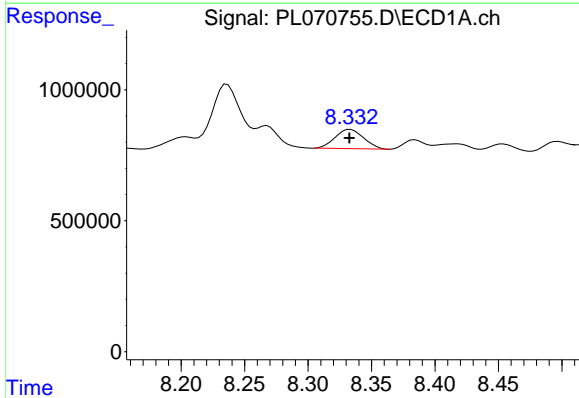
R.T.: 7.834 min  
 Delta R.T.: 0.000 min  
 Response: 473671  
 Conc: 108.50 ng/ml

Instrument :  
 ECD\_L  
 ClientSampleId :



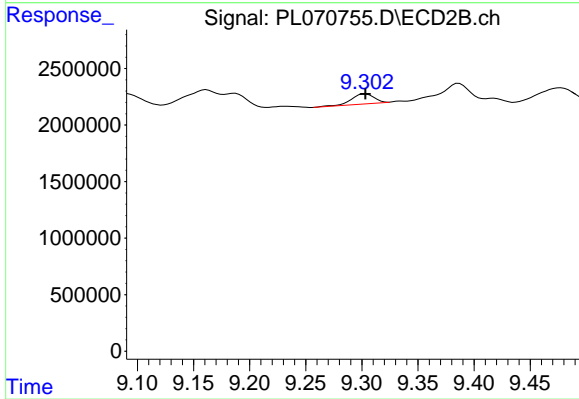
#3 Toxaphene-2

R.T.: 8.863 min  
 Delta R.T.: 0.000 min  
 Response: 930530  
 Conc: 104.68 ng/ml



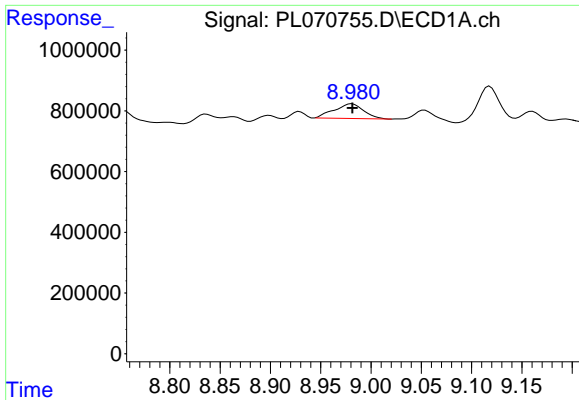
#4 Toxaphene-3

R.T.: 8.334 min  
 Delta R.T.: 0.000 min  
 Response: 1150754  
 Conc: 107.01 ng/ml



#4 Toxaphene-3

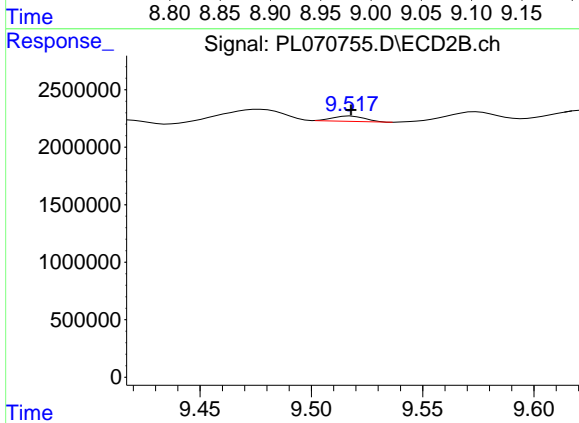
R.T.: 9.303 min  
 Delta R.T.: 0.000 min  
 Response: 1246129  
 Conc: 112.36 ng/ml



#5 Toxaphene-4

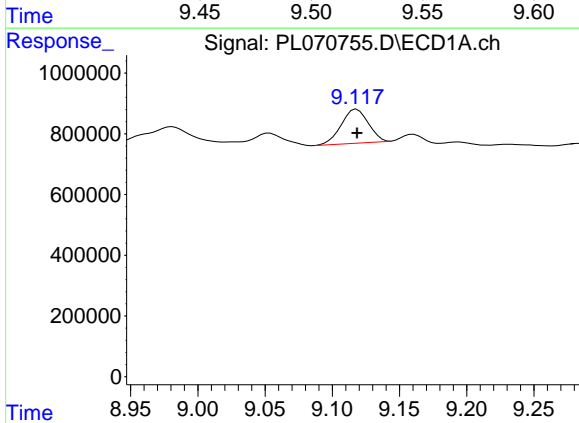
R.T.: 8.981 min  
 Delta R.T.: 0.000 min  
 Response: 987682  
 Conc: 107.66 ng/ml

Instrument :  
 ECD\_L  
 ClientSampleId :



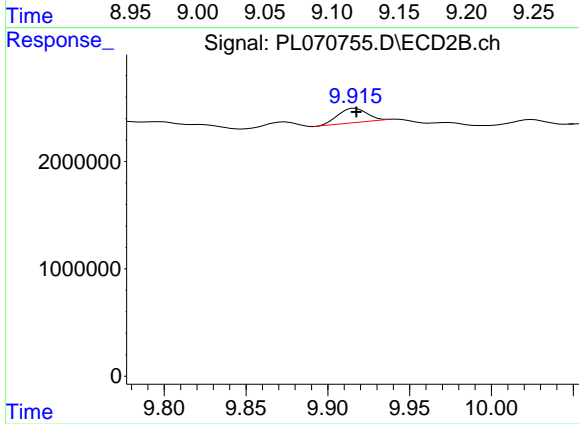
#5 Toxaphene-4

R.T.: 9.518 min  
 Delta R.T.: 0.000 min  
 Response: 441232  
 Conc: 107.03 ng/ml



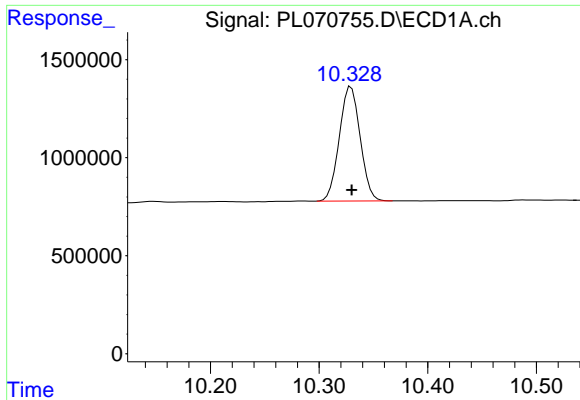
#6 Toxaphene-5

R.T.: 9.118 min  
 Delta R.T.: 0.000 min  
 Response: 1568943  
 Conc: 110.12 ng/ml



#6 Toxaphene-5

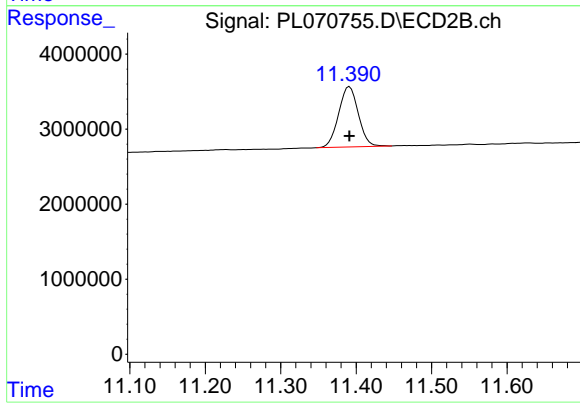
R.T.: 9.917 min  
 Delta R.T.: 0.000 min  
 Response: 1613738  
 Conc: 94.22 ng/ml



#7 Decachlorobiphenyl

R.T.: 10.329 min  
Delta R.T.: 0.000 min  
Response: 7791932  
Conc: 11.94 ng/ml

Instrument :  
ECD\_L  
ClientSampleId :



#7 Decachlorobiphenyl

R.T.: 11.391 min  
Delta R.T.: 0.000 min  
Response: 14587576  
Conc: 10.78 ng/ml