

Data Path : Z:\pestpcbsrv\HPCHEM1\ECD\_L\Data\PL110322\  
 Data File : PL078767.D  
 Signal(s) : Signal #1: ECD1A.ch Signal #2: ECD2B.ch  
 Acq On : 03 Nov 2022 09:19  
 Operator : AR\AJ  
 Sample : PEM  
 Misc :  
 ALS Vial : 3 Sample Multiplier: 1

Instrument :  
 ECD\_L  
 ClientSampleId :

Integration File signal 1: autoint1.e  
 Integration File signal 2: autoint2.e  
 Quant Time: Nov 04 03:15:59 2022  
 Quant Method : Z:\pestpcbsrv\HPCHEM1\ECD\_L\methods\PL102122.M  
 Quant Title : GC Extractables  
 QLast Update : Fri Oct 21 07:08:41 2022  
 Response via : Initial Calibration  
 Integrator: ChemStation

Volume Inj. : 1 µl  
 Signal #1 Phase : ZB-MR2 Signal #2 Phase: ZB-MR1  
 Signal #1 Info : 30M x 0.32mm x0.2 Signal #2 Info : 30M x 0.32mm x0.5µm

Compound	RT#1	RT#2	Resp#1	Resp#2	ng/ml	ng/ml
System Monitoring Compounds						
1) SA Tetrachlo...	3.323	2.570	38395127	52619213	20.134	20.609
28) SA Decachlor...	8.772	7.639	30022461	40969182	19.957	21.630
Target Compounds						
2) A alpha-BHC	3.783	3.057	26251580	39695247	9.143	10.052
3) MA gamma-BHC...	4.116	3.378	25942567	36427336	9.710	10.135
4) MA Heptachlor	4.706f	0.000	252231	0	0.097	N.D. #
5) MB Aldrin	0.000	3.999f	0	8715509	N.D.	2.489 #
6) B beta-BHC	4.331	3.678	12173630	16833334	10.568	11.732
8) B Heptachlo...	5.465	4.493f	4759149	868416	2.242	0.288 #
9) A Endosulfan I	5.843	0.000	163854	0	0.077	N.D. #
10) B gamma-Chl...	5.697f	4.741f	239515	1649551	0.106	0.538 #
11) B alpha-Chl...	5.781	0.000	694541	0	0.300	N.D. #
12) B 4,4'-DDE	5.972	4.980	448102	31979	0.224	0.012 #
13) MA Dieldrin	0.000	5.101	0	3208767	N.D.	1.083 #
14) MA Endrin	6.351	5.369	94063776	130.4E6	49.564	50.052
15) B Endosulfa...	0.000	5.693f	0	391568	N.D.	0.172 #
16) A 4,4'-DDD	6.499	5.529	2425440	3478207	1.455	1.584
17) MA 4,4'-DDT	6.808	5.775	180.0E6	232.9E6	100.405	107.354
18) B Endrin al...	6.712	5.845	2048887	3470212	1.408	1.849 #
20) A Methoxychlor	7.292	6.352	234.7E6	284.5E6	254.874	250.696
21) B Endrin ke...	7.430	6.561	4088933	9618325	2.173	3.721 #
24) Chlordane-2	0.000	4.105	0	4383293	N.D.	41.186 #
25) Chlordane-3	5.697f	4.741f	239515	1649551	0.717	5.412 #
26) Chlordane-4	5.781	0.000	694541	0	1.692	N.D. #

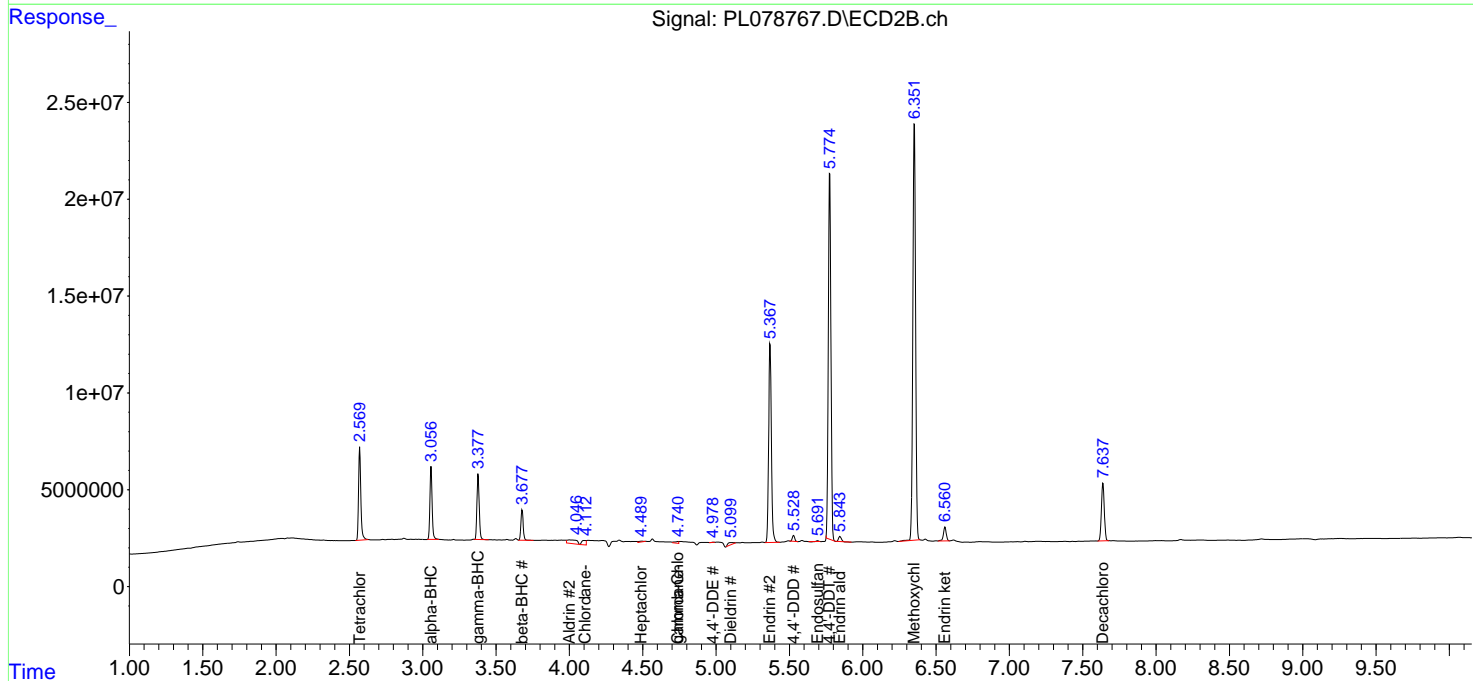
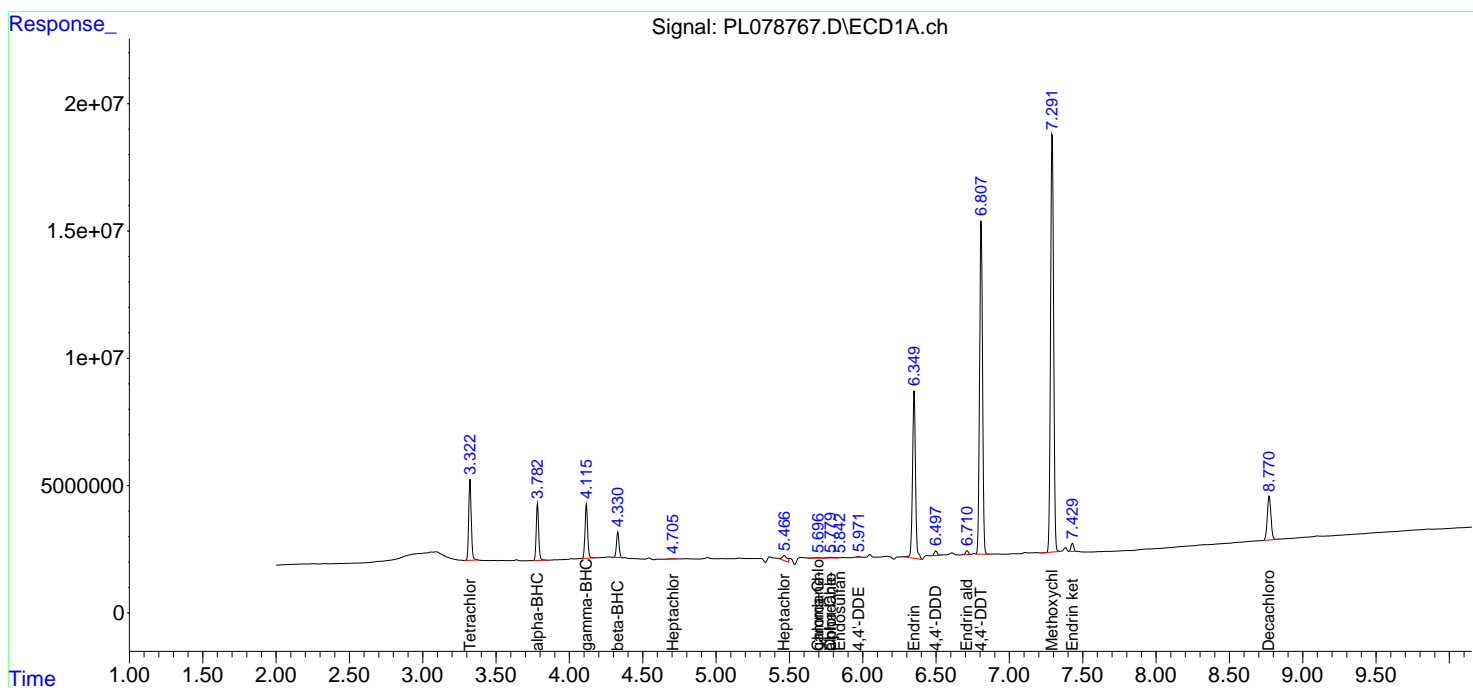
(f)=RT Delta > 1/2 Window (#)=Amounts differ by > 25% (m)=manual int.

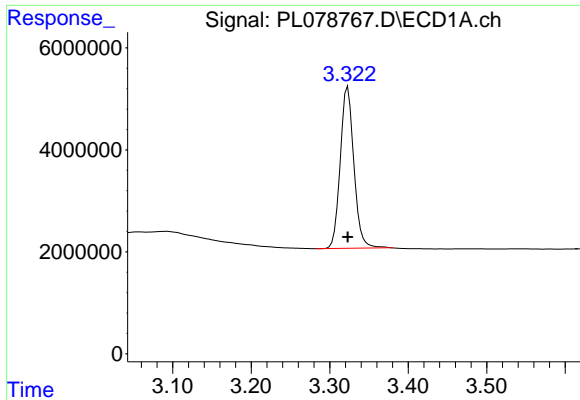
Data Path : Z:\pestpcbsrv\HPCHEM1\ECD\_L\Data\PL110322\  
 Data File : PL078767.D  
 Signal(s) : Signal #1: ECD1A.ch Signal #2: ECD2B.ch  
 Acq On : 03 Nov 2022 09:19  
 Operator : AR\AJ  
 Sample : PEM  
 Misc :  
 ALS Vial : 3 Sample Multiplier: 1

Instrument :  
 ECD\_L  
 ClientSampleId :

Integration File signal 1: autoint1.e  
 Integration File signal 2: autoint2.e  
 Quant Time: Nov 04 03:15:59 2022  
 Quant Method : Z:\pestpcbsrv\HPCHEM1\ECD\_L\methods\PL102122.M  
 Quant Title : GC Extractables  
 QLast Update : Fri Oct 21 07:08:41 2022  
 Response via : Initial Calibration  
 Integrator: ChemStation

Volume Inj. : 1 µl  
 Signal #1 Phase : ZB-MR2 Signal #2 Phase: ZB-MR1  
 Signal #1 Info : 30M x 0.32mm x0.2 Signal #2 Info : 30M x 0.32mm x0.5µm

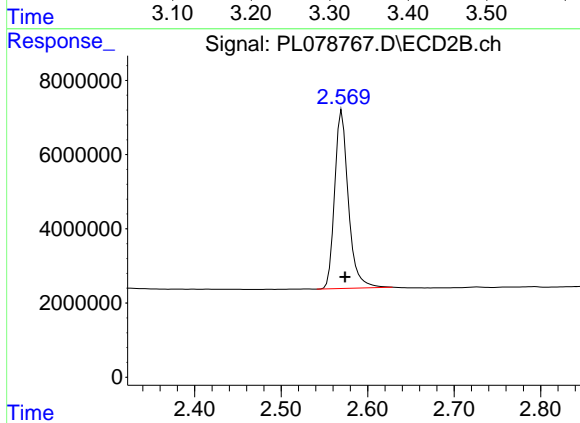




#1 Tetrachloro-m-xylene

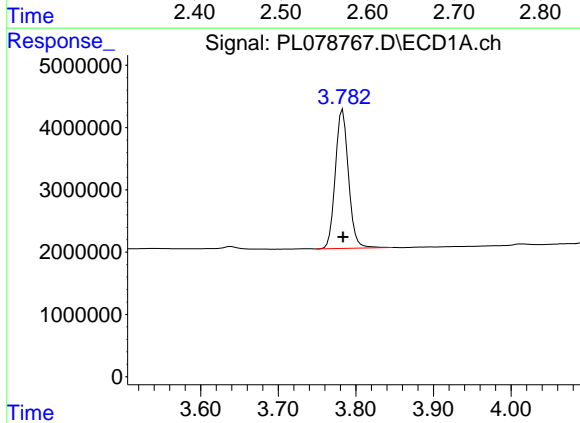
R.T.: 3.323 min  
 Delta R.T.: 0.000 min  
 Response: 38395127  
 Conc: 20.13 ng/ml

Instrument :  
 ECD\_L  
 ClientSampleId :



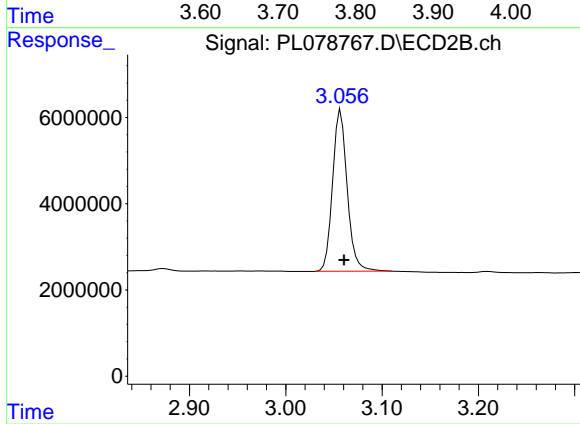
#1 Tetrachloro-m-xylene

R.T.: 2.570 min  
 Delta R.T.: -0.003 min  
 Response: 52619213  
 Conc: 20.61 ng/ml



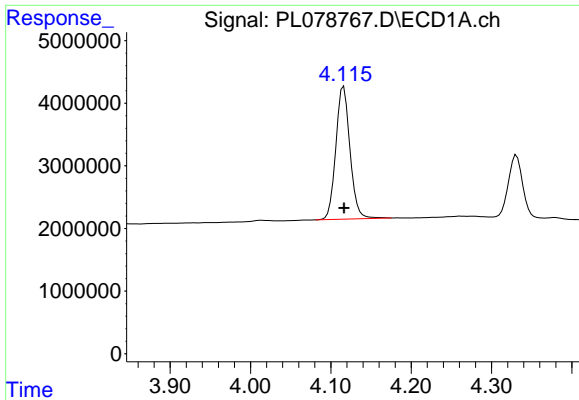
#2 alpha-BHC

R.T.: 3.783 min  
 Delta R.T.: 0.000 min  
 Response: 26251580  
 Conc: 9.14 ng/ml



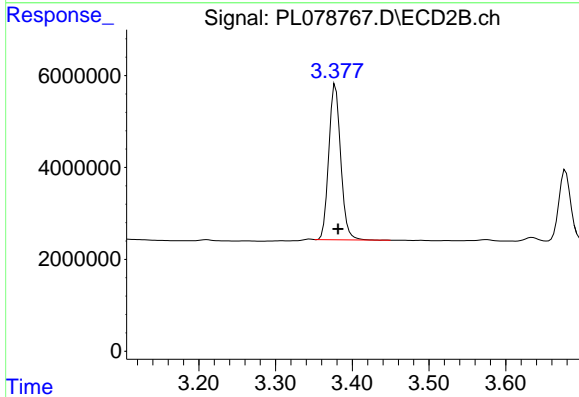
#2 alpha-BHC

R.T.: 3.057 min  
 Delta R.T.: -0.004 min  
 Response: 39695247  
 Conc: 10.05 ng/ml

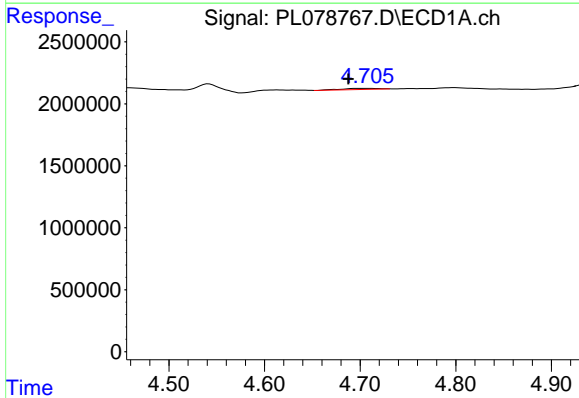


#3 gamma-BHC (Lindane)  
 R.T.: 4.116 min  
 Delta R.T.: 0.000 min  
 Response: 25942567  
 Conc: 9.71 ng/ml

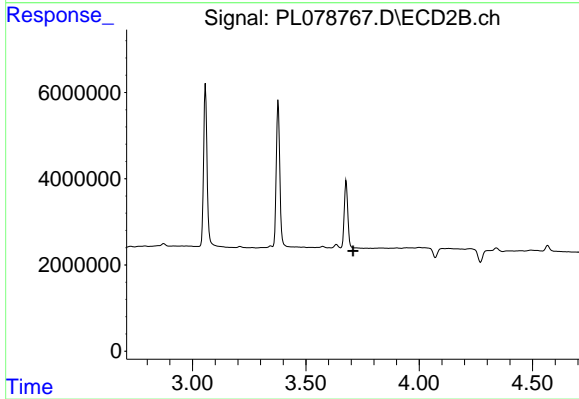
Instrument :  
 ECD\_L  
 ClientSampleId :



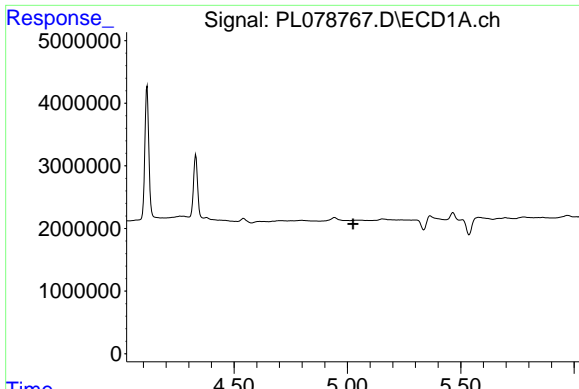
#3 gamma-BHC (Lindane)  
 R.T.: 3.378 min  
 Delta R.T.: -0.004 min  
 Response: 36427336  
 Conc: 10.14 ng/ml



#4 Heptachlor  
 R.T.: 4.706 min  
 Delta R.T.: 0.019 min  
 Response: 252231  
 Conc: 0.10 ng/ml

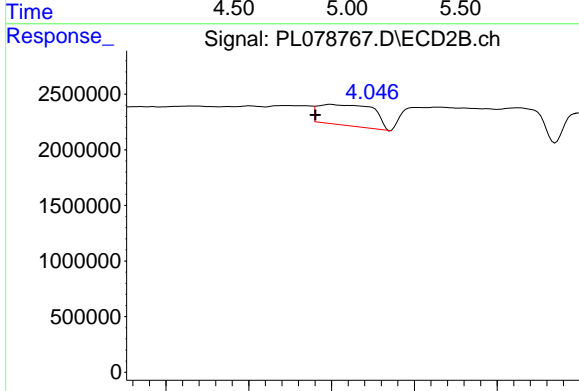


#4 Heptachlor  
 R.T.: 0.000 min  
 Exp R.T. : 3.709 min  
 Response: 0  
 Conc: N.D.

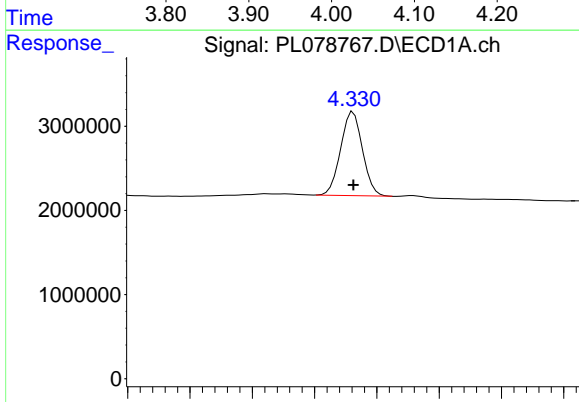


#5 Aldrin  
 R.T.: 0.000 min  
 Exp R.T.: 5.025 min  
 Response: 0  
 Conc: N.D.

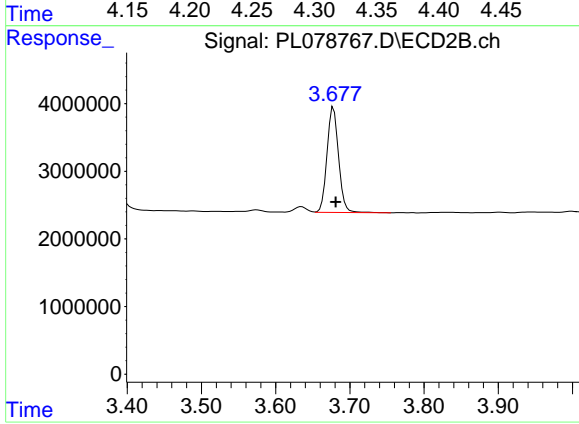
Instrument :  
 ECD\_L  
 ClientSampleId :



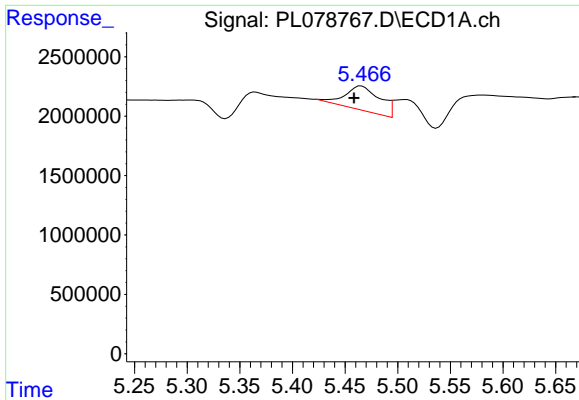
#5 Aldrin  
 R.T.: 3.999 min  
 Delta R.T.: 0.019 min  
 Response: 8715509  
 Conc: 2.49 ng/ml



#6 beta-BHC  
 R.T.: 4.331 min  
 Delta R.T.: 0.000 min  
 Response: 12173630  
 Conc: 10.57 ng/ml

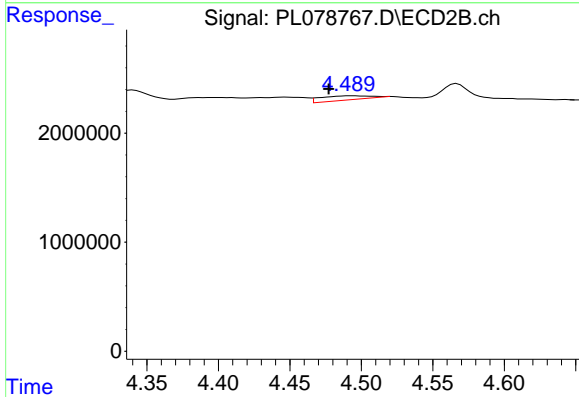


#6 beta-BHC  
 R.T.: 3.678 min  
 Delta R.T.: -0.003 min  
 Response: 16833334  
 Conc: 11.73 ng/ml

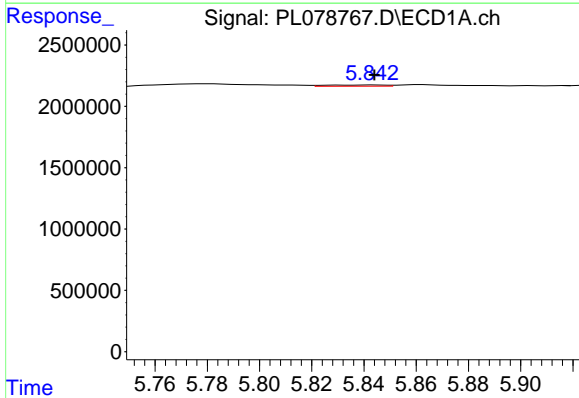


#8 Heptachlor epoxide  
 R.T.: 5.465 min  
 Delta R.T.: 0.007 min  
 Response: 4759149  
 Conc: 2.24 ng/ml

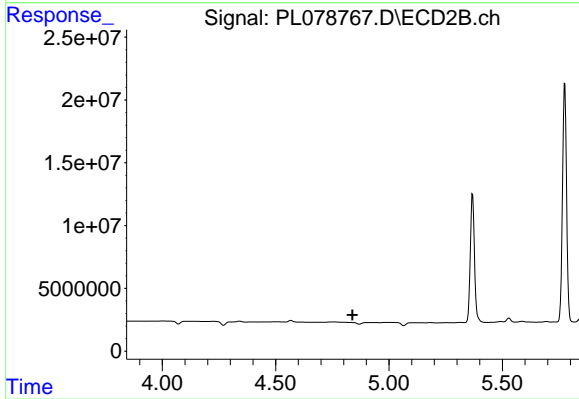
Instrument :  
 ECD\_L  
 ClientSampleId :



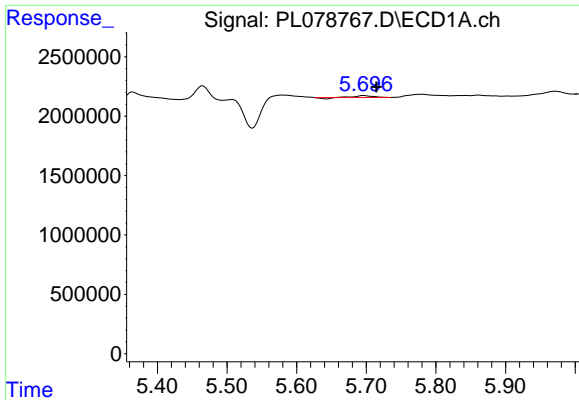
#8 Heptachlor epoxide  
 R.T.: 4.493 min  
 Delta R.T.: 0.016 min  
 Response: 868416  
 Conc: 0.29 ng/ml



#9 Endosulfan I  
 R.T.: 5.843 min  
 Delta R.T.: 0.000 min  
 Response: 163854  
 Conc: 0.08 ng/ml



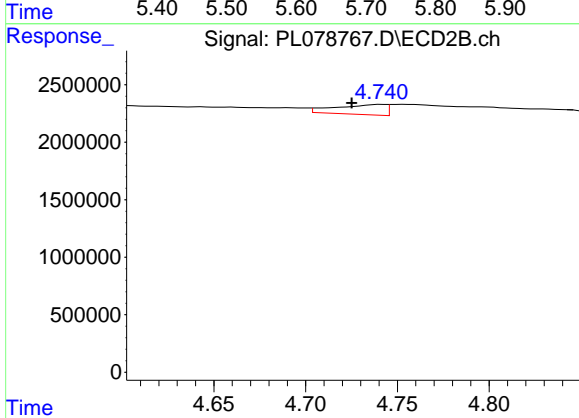
#9 Endosulfan I  
 R.T.: 0.000 min  
 Exp R.T. : 4.840 min  
 Response: 0  
 Conc: N.D.



#10 gamma-Chlordane

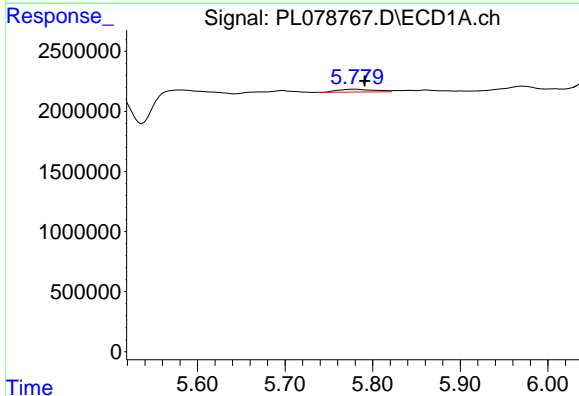
R.T.: 5.697 min  
 Delta R.T.: -0.017 min  
 Response: 239515  
 Conc: 0.11 ng/ml

Instrument :  
 ECD\_L  
 ClientSampleId :



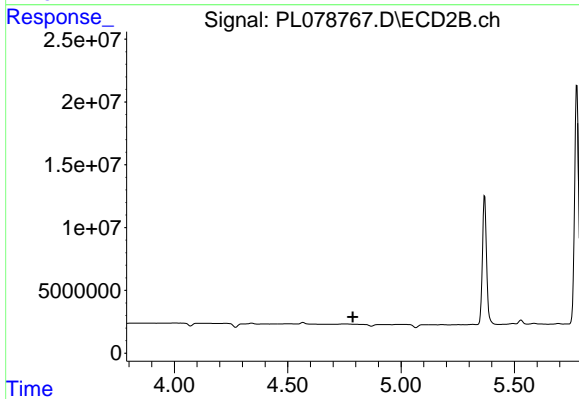
#10 gamma-Chlordane

R.T.: 4.741 min  
 Delta R.T.: 0.016 min  
 Response: 1649551  
 Conc: 0.54 ng/ml



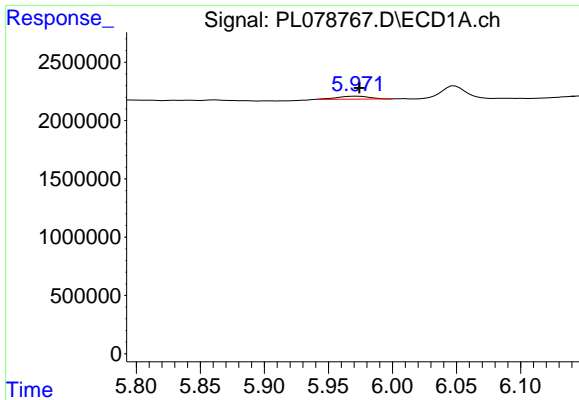
#11 alpha-Chlordane

R.T.: 5.781 min  
 Delta R.T.: -0.010 min  
 Response: 694541  
 Conc: 0.30 ng/ml



#11 alpha-Chlordane

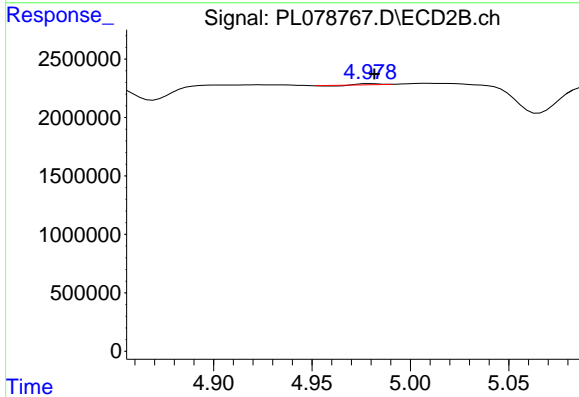
R.T.: 0.000 min  
 Exp R.T. : 4.787 min  
 Response: 0  
 Conc: N.D.



#12 4,4'-DDE

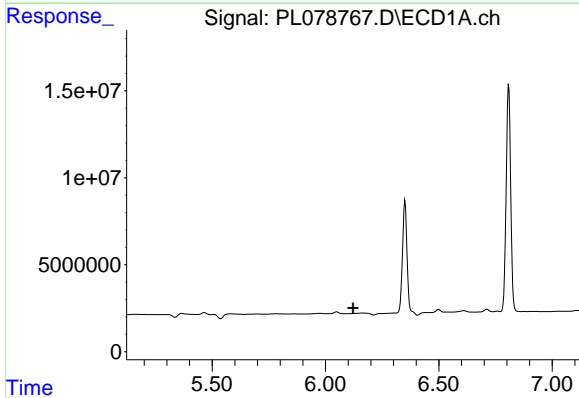
R.T.: 5.972 min  
 Delta R.T.: -0.002 min  
 Response: 448102  
 Conc: 0.22 ng/ml

Instrument :  
 ECD\_L  
 ClientSampleId :



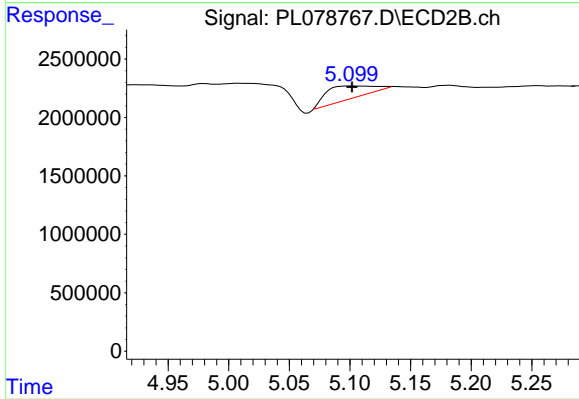
#12 4,4'-DDE

R.T.: 4.980 min  
 Delta R.T.: -0.002 min  
 Response: 31979  
 Conc: 0.01 ng/ml



#13 Dieldrin

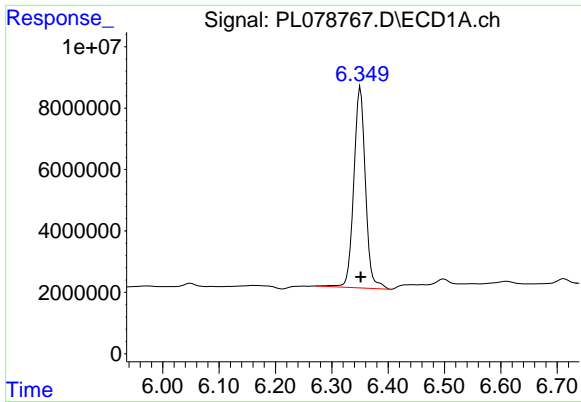
R.T.: 0.000 min  
 Exp R.T. : 6.121 min  
 Response: 0  
 Conc: N.D.



#13 Dieldrin

R.T.: 5.101 min  
 Delta R.T.: 0.000 min  
 Response: 3208767  
 Conc: 1.08 ng/ml

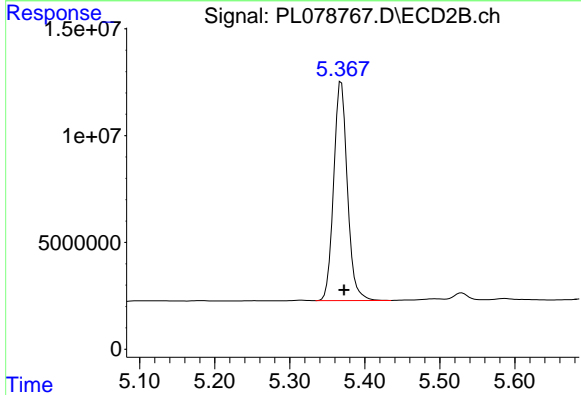




#14 Endrin

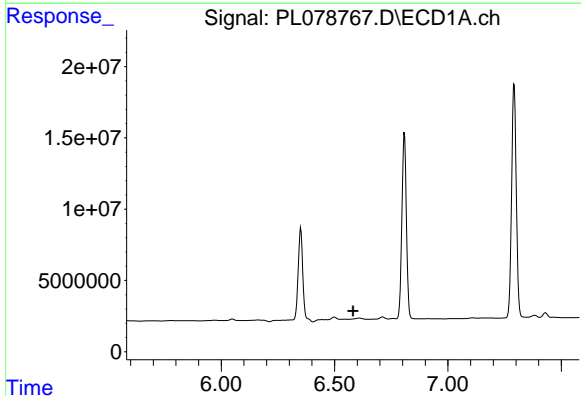
R.T.: 6.351 min  
 Delta R.T.: 0.000 min  
 Response: 94063776  
 Conc: 49.56 ng/ml

Instrument :  
 ECD\_L  
 ClientSampleId :



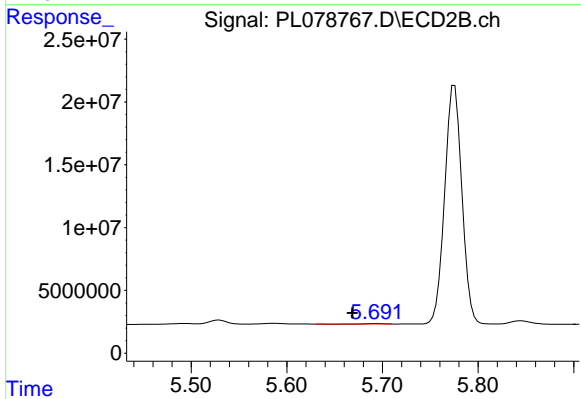
#14 Endrin

R.T.: 5.369 min  
 Delta R.T.: -0.004 min  
 Response: 130397387  
 Conc: 50.05 ng/ml



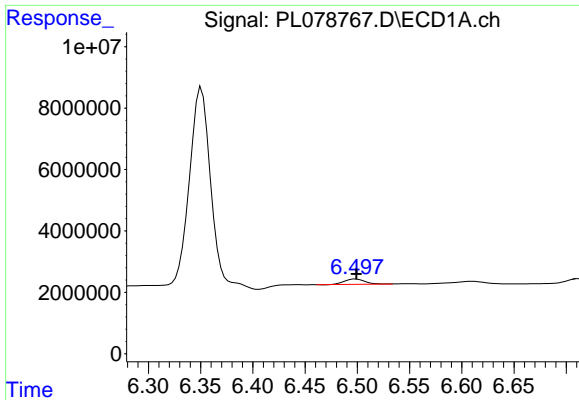
#15 Endosulfan II

R.T.: 0.000 min  
 Exp R.T. : 6.581 min  
 Response: 0  
 Conc: N.D.



#15 Endosulfan II

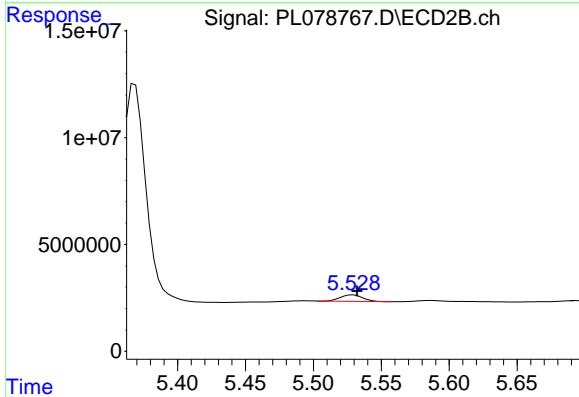
R.T.: 5.693 min  
 Delta R.T.: 0.024 min  
 Response: 391568  
 Conc: 0.17 ng/ml



#16 4,4'-DDD

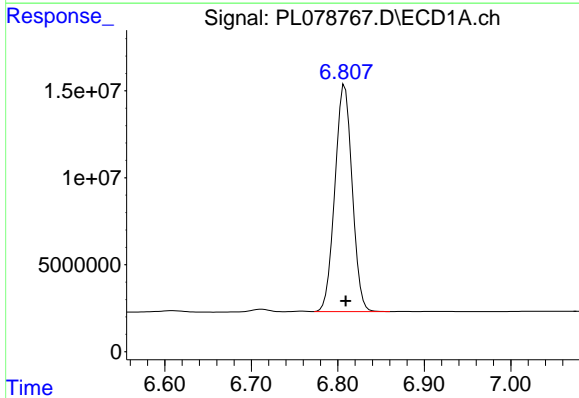
R.T.: 6.499 min  
 Delta R.T.: 0.000 min  
 Response: 2425440  
 Conc: 1.45 ng/ml

Instrument :  
 ECD\_L  
 ClientSampleId :



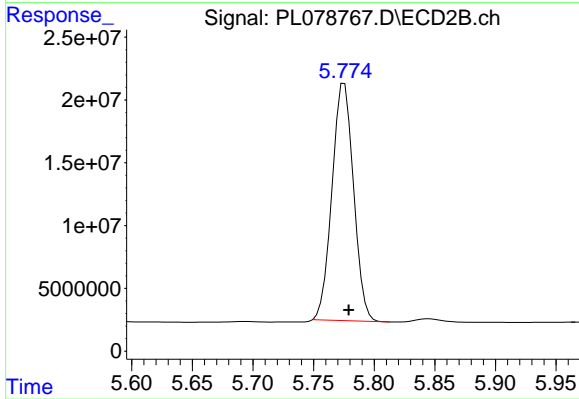
#16 4,4'-DDD

R.T.: 5.529 min  
 Delta R.T.: -0.003 min  
 Response: 3478207  
 Conc: 1.58 ng/ml



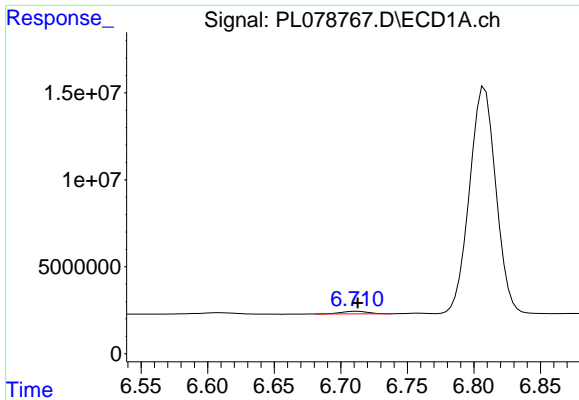
#17 4,4'-DDT

R.T.: 6.808 min  
 Delta R.T.: -0.001 min  
 Response: 179959054  
 Conc: 100.41 ng/ml



#17 4,4'-DDT

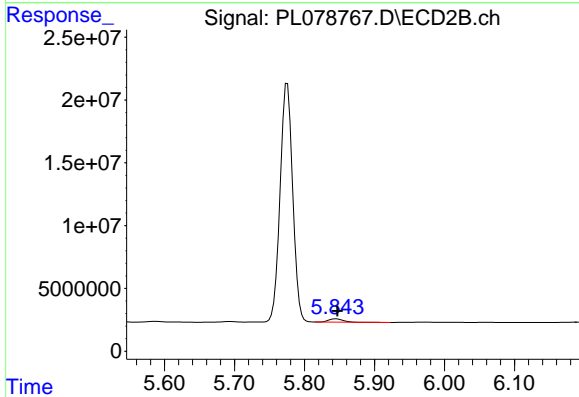
R.T.: 5.775 min  
 Delta R.T.: -0.004 min  
 Response: 232863587  
 Conc: 107.35 ng/ml



#18 Endrin aldehyde

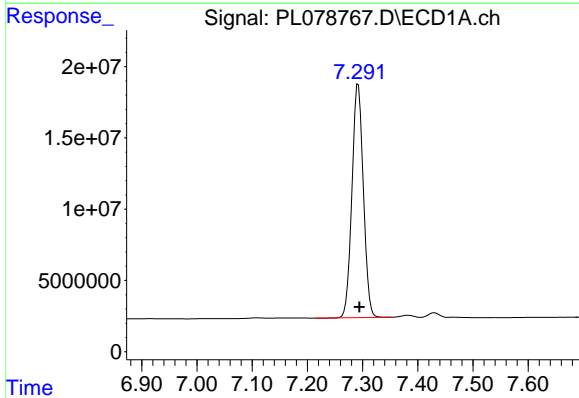
R.T.: 6.712 min  
 Delta R.T.: -0.001 min  
 Response: 2048887  
 Conc: 1.41 ng/ml

Instrument :  
 ECD\_L  
 ClientSampleId :



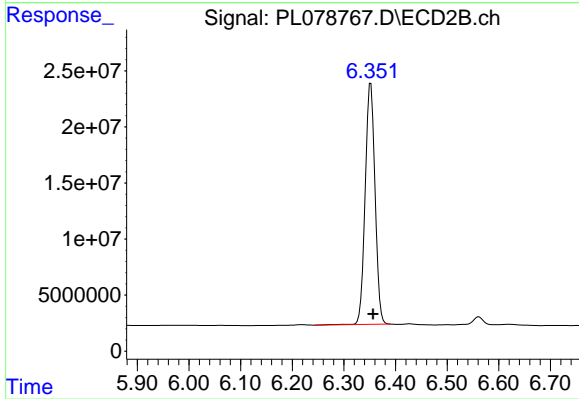
#18 Endrin aldehyde

R.T.: 5.845 min  
 Delta R.T.: -0.003 min  
 Response: 3470212  
 Conc: 1.85 ng/ml



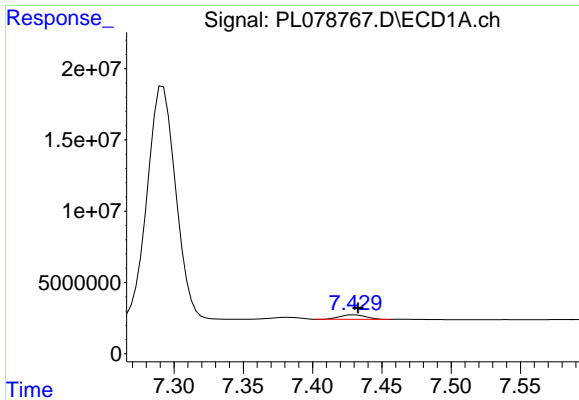
#20 Methoxychlor

R.T.: 7.292 min  
 Delta R.T.: -0.002 min  
 Response: 234710419  
 Conc: 254.87 ng/ml



#20 Methoxychlor

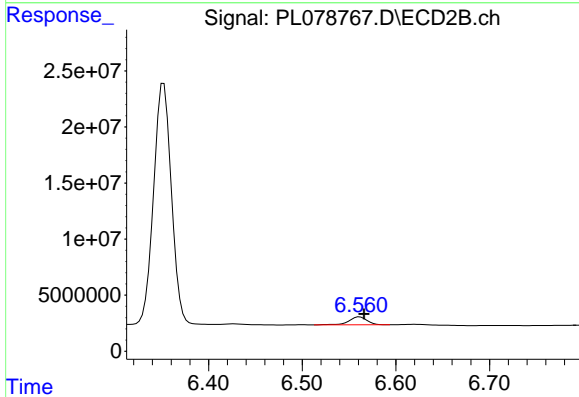
R.T.: 6.352 min  
 Delta R.T.: -0.005 min  
 Response: 284488701  
 Conc: 250.70 ng/ml



#21 Endrin ketone

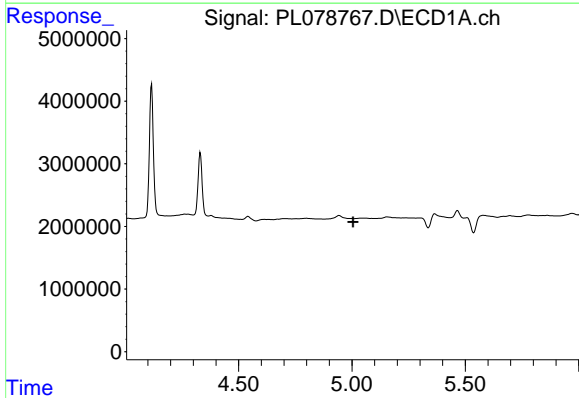
R.T.: 7.430 min  
 Delta R.T.: -0.003 min  
 Response: 4088933  
 Conc: 2.17 ng/ml

Instrument :  
 ECD\_L  
 ClientSampleId :



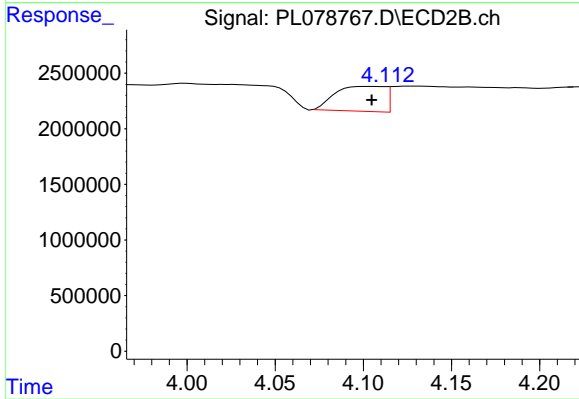
#21 Endrin ketone

R.T.: 6.561 min  
 Delta R.T.: -0.005 min  
 Response: 9618325  
 Conc: 3.72 ng/ml



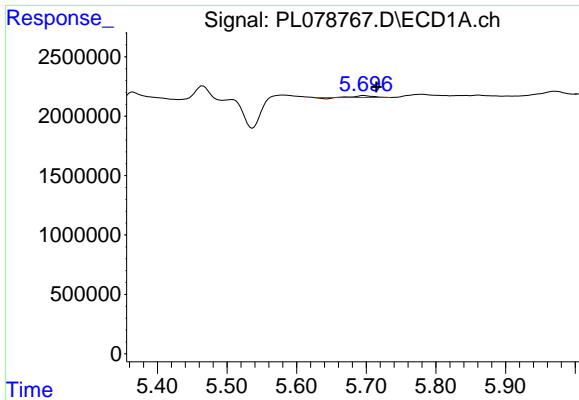
#24 Chlordane-2

R.T.: 0.000 min  
 Exp R.T. : 5.005 min  
 Response: 0  
 Conc: N.D.



#24 Chlordane-2

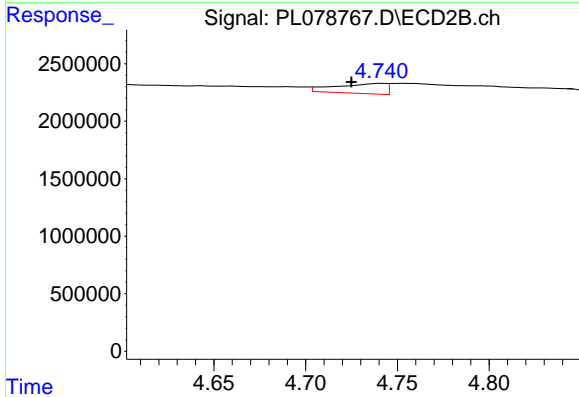
R.T.: 4.105 min  
 Delta R.T.: 0.000 min  
 Response: 4383293  
 Conc: 41.19 ng/ml



#25 Chlordane-3

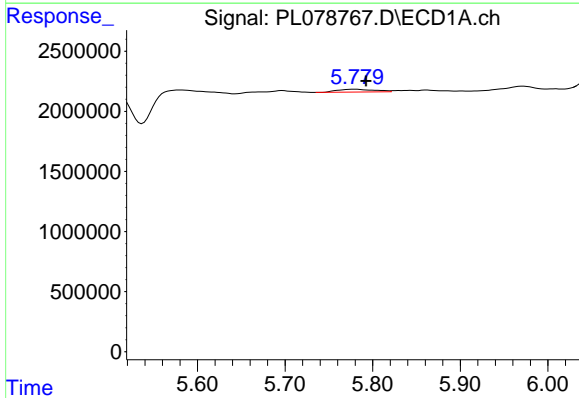
R.T.: 5.697 min  
 Delta R.T.: -0.017 min  
 Response: 239515  
 Conc: 0.72 ng/ml

Instrument :  
 ECD\_L  
 ClientSampleId :



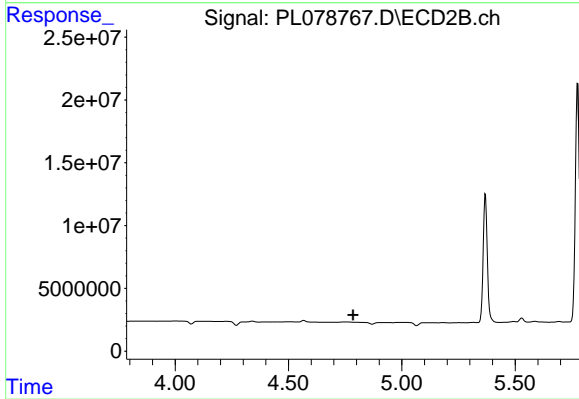
#25 Chlordane-3

R.T.: 4.741 min  
 Delta R.T.: 0.016 min  
 Response: 1649551  
 Conc: 5.41 ng/ml



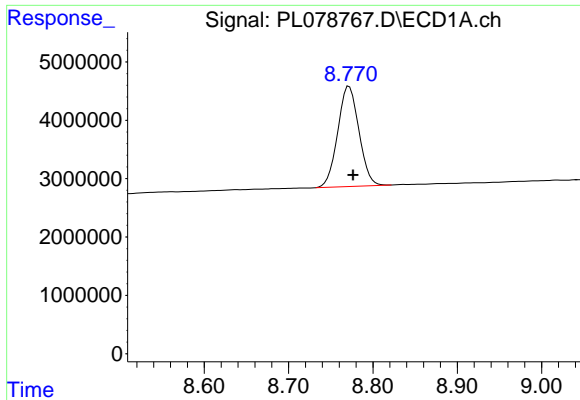
#26 Chlordane-4

R.T.: 5.781 min  
 Delta R.T.: -0.012 min  
 Response: 694541  
 Conc: 1.69 ng/ml



#26 Chlordane-4

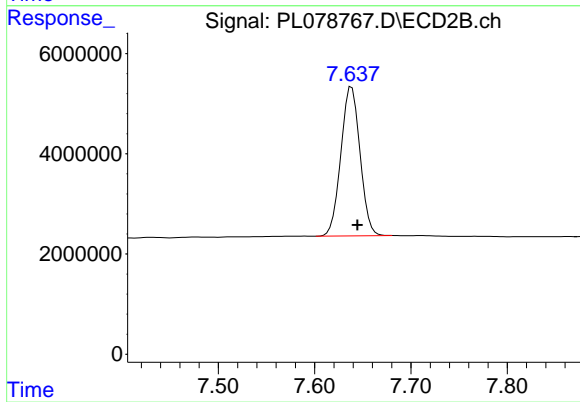
R.T.: 0.000 min  
 Exp R.T. : 4.785 min  
 Response: 0  
 Conc: N.D.



#28 Decachlorobiphenyl

R.T.: 8.772 min  
Delta R.T.: -0.005 min  
Response: 30022461  
Conc: 19.96 ng/ml

Instrument :  
ECD\_L  
ClientSampleId :



#28 Decachlorobiphenyl

R.T.: 7.639 min  
Delta R.T.: -0.006 min  
Response: 40969182  
Conc: 21.63 ng/ml