

Data Path : Z:\pestpcbsrv\HPCHEM1\ECD_L\Data\PL110322\
 Data File : PL078795.D
 Signal(s) : Signal #1: ECD1A.ch Signal #2: ECD2B.ch
 Acq On : 03 Nov 2022 18:54
 Operator : AR\AJ
 Sample : N5360-10
 Misc :
 ALS Vial : 28 Sample Multiplier: 1

Instrument :
 ECD_L
 ClientSampleId :

Integration File signal 1: autoint1.e
 Integration File signal 2: autoint2.e
 Quant Time: Nov 04 03:22:57 2022
 Quant Method : Z:\pestpcbsrv\HPCHEM1\ECD_L\methods\PL102122.M
 Quant Title : GC Extractables
 QLast Update : Fri Oct 21 07:08:41 2022
 Response via : Initial Calibration
 Integrator: ChemStation

Volume Inj. : 1 µl
 Signal #1 Phase : ZB-MR2 Signal #2 Phase: ZB-MR1
 Signal #1 Info : 30M x 0.32mm x0.2 Signal #2 Info : 30M x 0.32mm x0.5µm

Compound	RT#1	RT#2	Resp#1	Resp#2	ng/ml	ng/ml

System Monitoring Compounds						
1) SA Tetrachlo...	3.321	2.569	27743609	43427054	14.548	17.009
28) SA Decachlor...	8.769	7.635	8294617	12411006	5.514	6.552
Target Compounds						
2) A alpha-BHC	3.755f	3.041f	2740604	1308225	0.954	0.331 #
3) MA gamma-BHC...	4.133f	3.388	134621	3045900	0.050	0.847 #
4) MA Heptachlor	4.688	0.000	494197	0	0.190	N.D. #
5) MB Aldrin	5.022	3.959f	71772	5356939	0.029	1.530 #
6) B beta-BHC	4.308f	0.000	454133	0	0.394	N.D. #
7) B delta-BHC	0.000	3.884f	0	767535	N.D.	0.211 #
8) B Heptachlo...	5.437f	4.449f	782891	1262297	0.369	0.419
9) A Endosulfan I	5.865f	4.862f	380339	655297	0.178	0.229 #
10) B gamma-Chl...	5.709	0.000	268148	0	0.119	N.D. #
11) B alpha-Chl...	5.766f	0.000	919486	0	0.397	N.D. #
12) B 4,4'-DDE	0.000	5.011f	0	192419	N.D.	0.071 #
13) MA Dieldrin	0.000	5.086f	0	662599	N.D.	0.224 #
14) MA Endrin	0.000	5.390f	0	2704838	N.D.	1.038 #
16) A 4,4'-DDD	6.487	0.000	628902	0	0.377	N.D. #
17) MA 4,4'-DDT	6.835f	0.000	553804	0	0.309	N.D. #
18) B Endrin al...	6.709	0.000	464654	0	0.319	N.D. #
20) A Methoxychlor	0.000	6.340f	0	381136	N.D.	0.336 #
21) B Endrin ke...	0.000	6.548f	0	732317	N.D.	0.283 #
23) Chlordane-1	0.000	3.564f	0	531559	N.D.	5.271 #
24) Chlordane-2	5.022f	4.083f	71772	1337822	0.867	12.570 #
25) Chlordane-3	5.709	0.000	268148	0	0.803	N.D. #
26) Chlordane-4	5.766f	0.000	919486	0	2.240	N.D. #
27) Chlordane-5	0.000	5.440	0	163136	N.D.	2.000 #

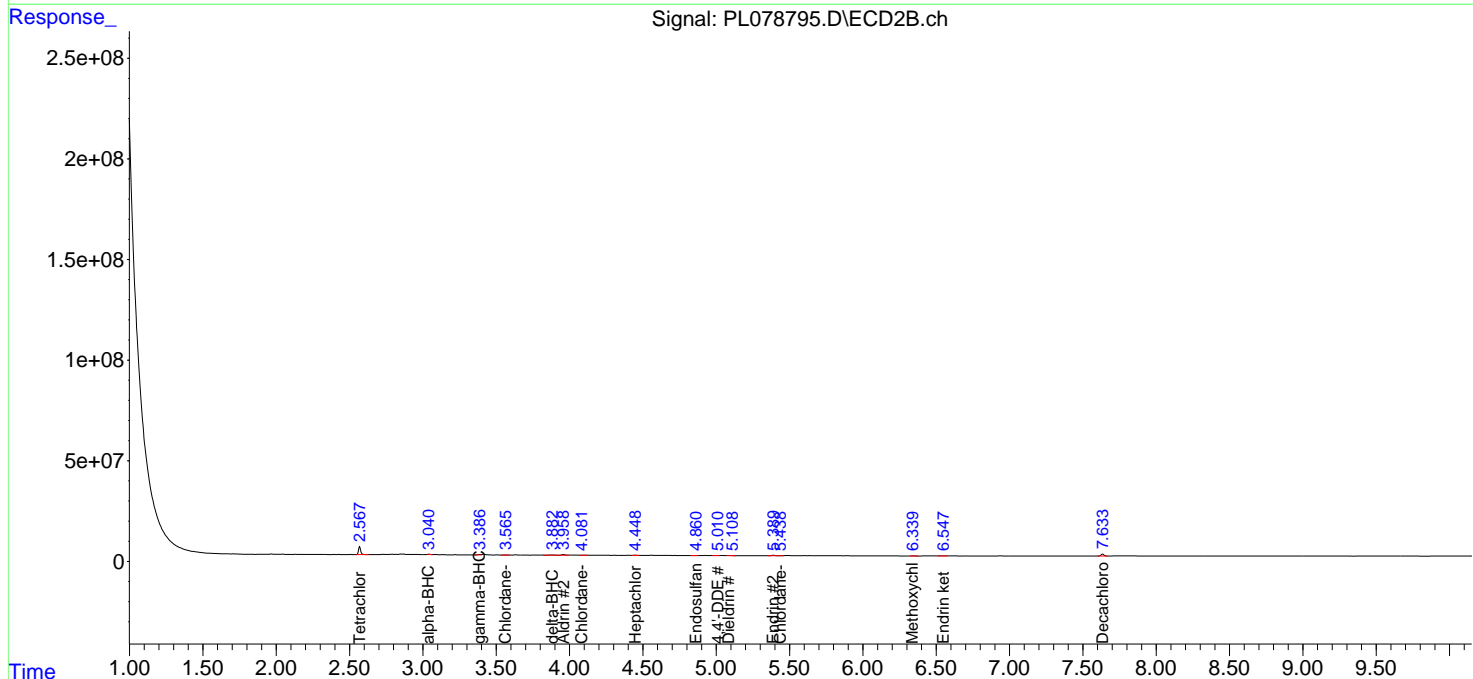
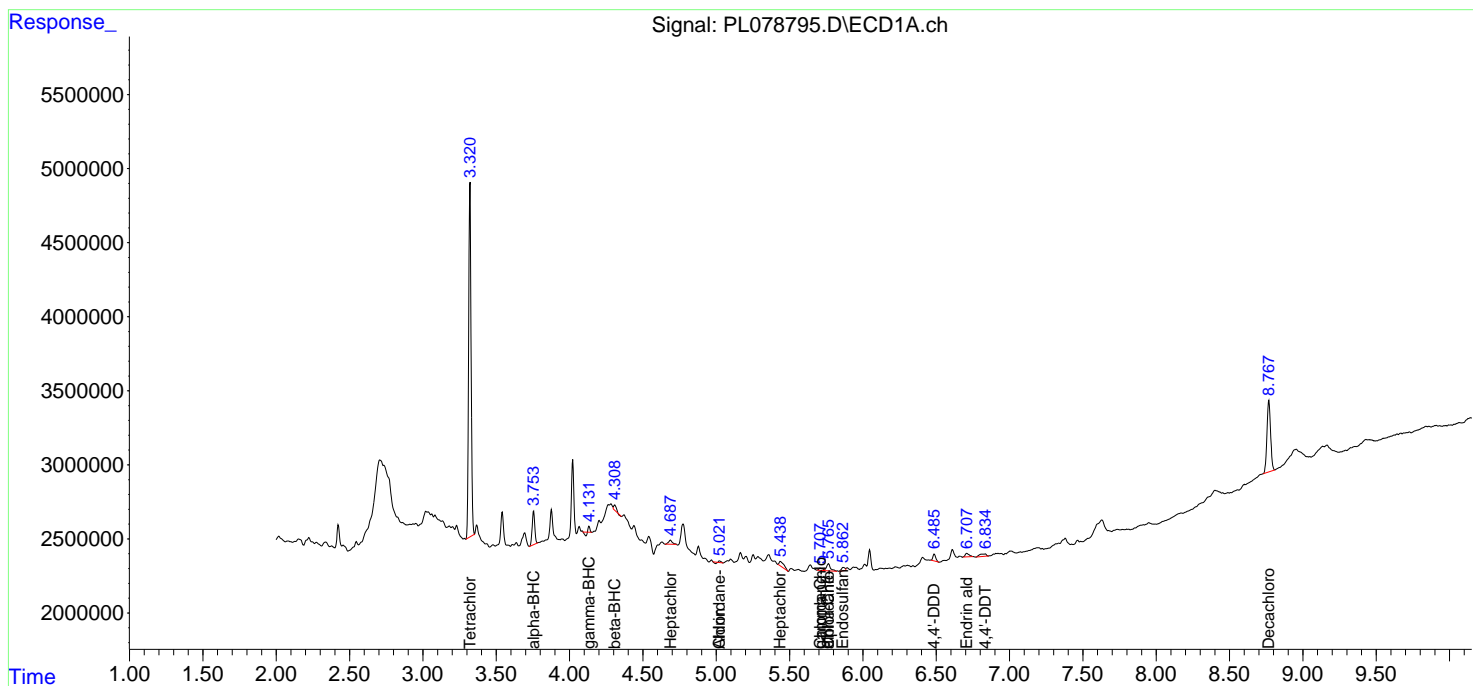
(f)=RT Delta > 1/2 Window (#)=Amounts differ by > 25% (m)=manual int.

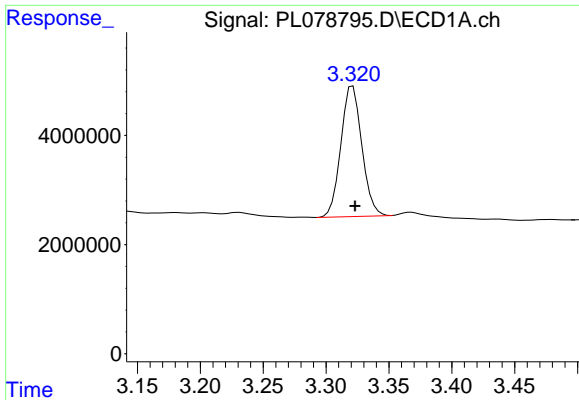
Data Path : Z:\pestpcbsrv\HPCHEM1\ECD_L\Data\PL110322\
 Data File : PL078795.D
 Signal(s) : Signal #1: ECD1A.ch Signal #2: ECD2B.ch
 Acq On : 03 Nov 2022 18:54
 Operator : AR\AJ
 Sample : N5360-10
 Misc :
 ALS Vial : 28 Sample Multiplier: 1

Instrument :
 ECD_L
 ClientSampleId :

Integration File signal 1: autoint1.e
 Integration File signal 2: autoint2.e
 Quant Time: Nov 04 03:22:57 2022
 Quant Method : Z:\pestpcbsrv\HPCHEM1\ECD_L\methods\PL102122.M
 Quant Title : GC Extractables
 QLast Update : Fri Oct 21 07:08:41 2022
 Response via : Initial Calibration
 Integrator: ChemStation

Volume Inj. : 1 µl
 Signal #1 Phase : ZB-MR2 Signal #2 Phase: ZB-MR1
 Signal #1 Info : 30M x 0.32mm x0.2 Signal #2 Info : 30M x 0.32mm x0.5µm

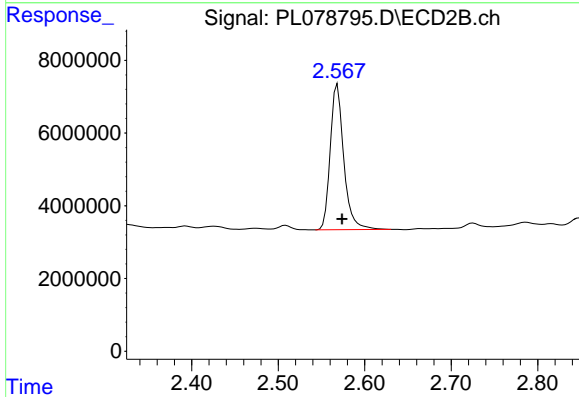




#1 Tetrachloro-m-xylene

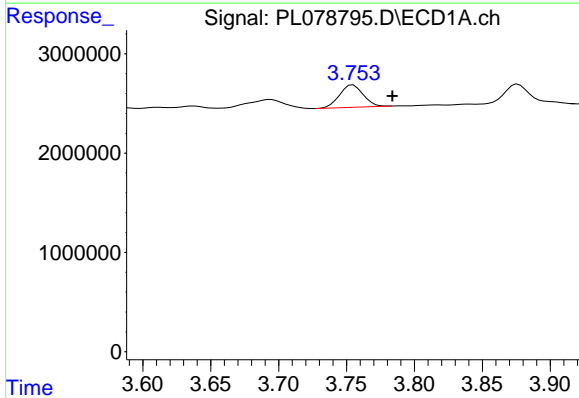
R.T.: 3.321 min
 Delta R.T.: -0.002 min
 Response: 27743609
 Conc: 14.55 ng/ml

Instrument :
 ECD_L
 ClientSampleId :



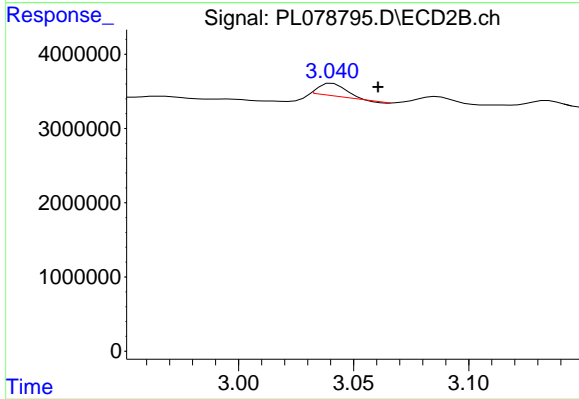
#1 Tetrachloro-m-xylene

R.T.: 2.569 min
 Delta R.T.: -0.005 min
 Response: 43427054
 Conc: 17.01 ng/ml



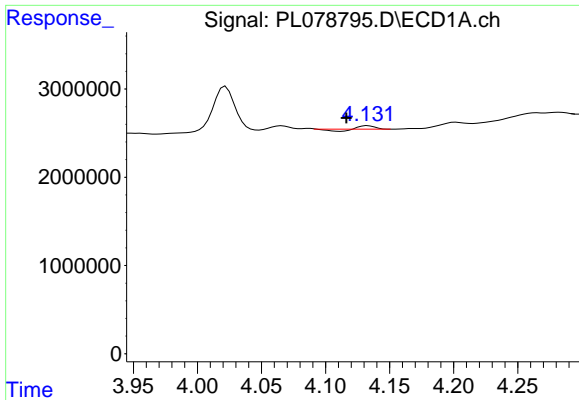
#2 alpha-BHC

R.T.: 3.755 min
 Delta R.T.: -0.029 min
 Response: 2740604
 Conc: 0.95 ng/ml



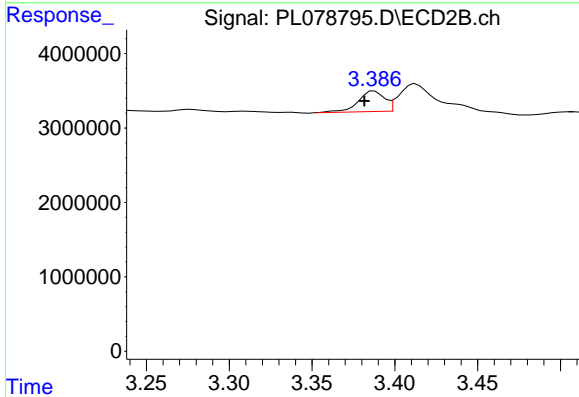
#2 alpha-BHC

R.T.: 3.041 min
 Delta R.T.: -0.020 min
 Response: 1308225
 Conc: 0.33 ng/ml

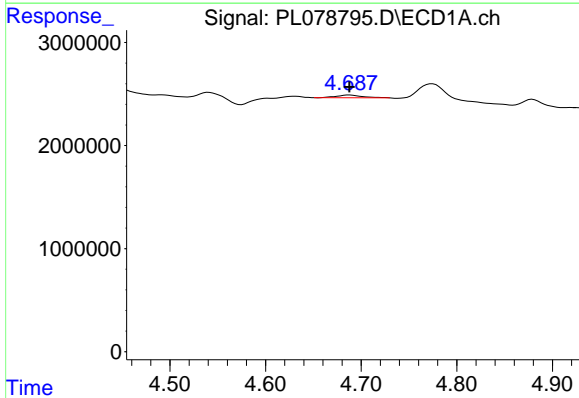


#3 gamma-BHC (Lindane)
 R.T.: 4.133 min
 Delta R.T.: 0.017 min
 Response: 134621
 Conc: 0.05 ng/ml

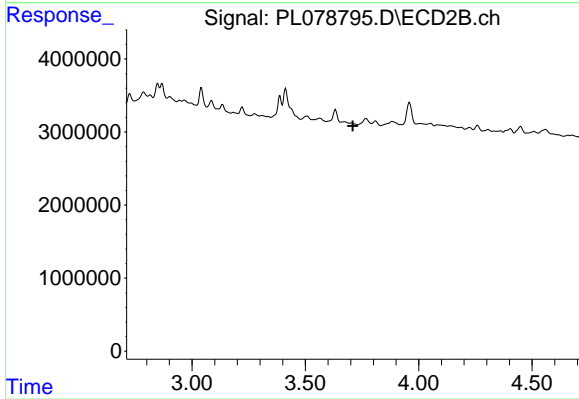
Instrument :
 ECD_L
 ClientSampleId :



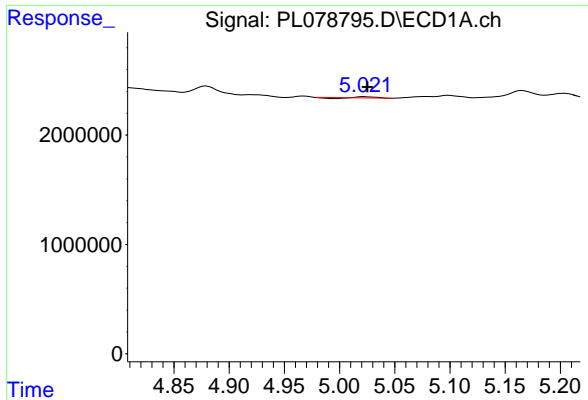
#3 gamma-BHC (Lindane)
 R.T.: 3.388 min
 Delta R.T.: 0.006 min
 Response: 3045900
 Conc: 0.85 ng/ml



#4 Heptachlor
 R.T.: 4.688 min
 Delta R.T.: 0.000 min
 Response: 494197
 Conc: 0.19 ng/ml

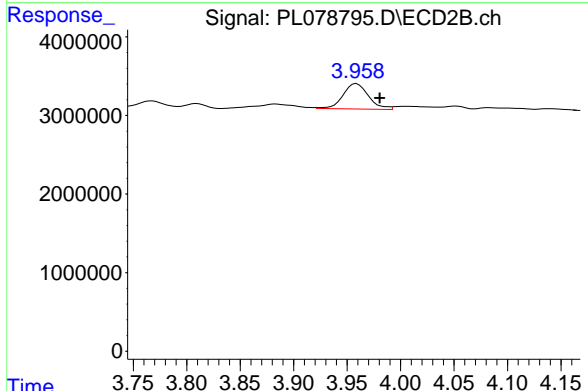


#4 Heptachlor
 R.T.: 0.000 min
 Exp R.T. : 3.709 min
 Response: 0
 Conc: N.D.

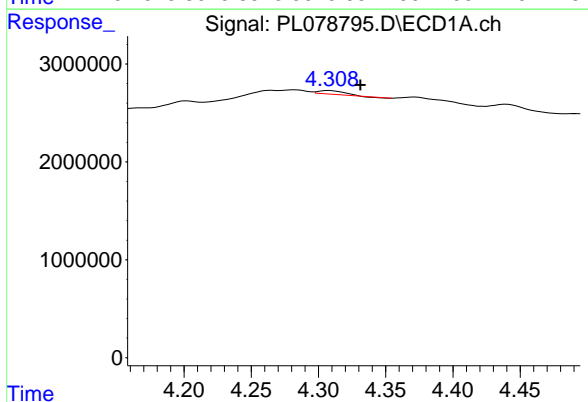


#5 Aldrin
 R.T.: 5.022 min
 Delta R.T.: -0.003 min
 Response: 71772
 Conc: 0.03 ng/ml

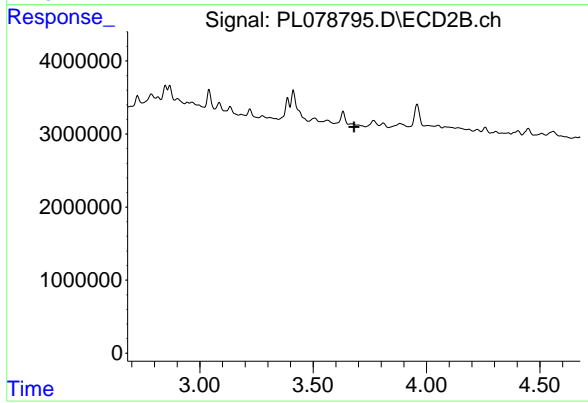
Instrument :
 ECD_L
 ClientSampleId :



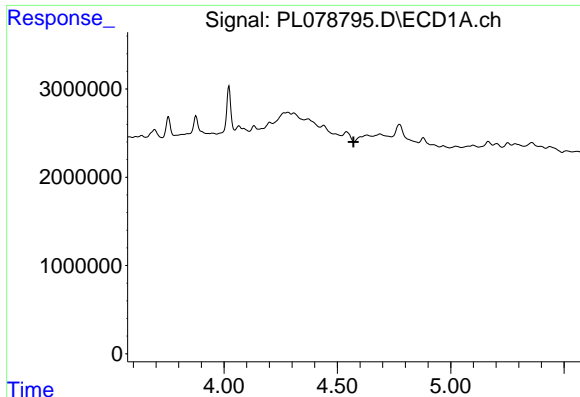
#5 Aldrin
 R.T.: 3.959 min
 Delta R.T.: -0.021 min
 Response: 5356939
 Conc: 1.53 ng/ml



#6 beta-BHC
 R.T.: 4.308 min
 Delta R.T.: -0.023 min
 Response: 454133
 Conc: 0.39 ng/ml



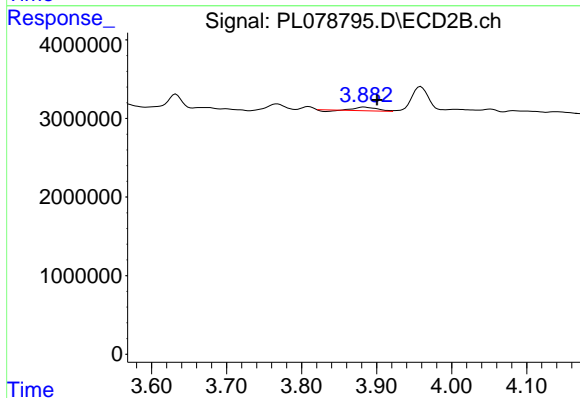
#6 beta-BHC
 R.T.: 0.000 min
 Exp R.T. : 3.681 min
 Response: 0
 Conc: N.D.



#7 delta-BHC

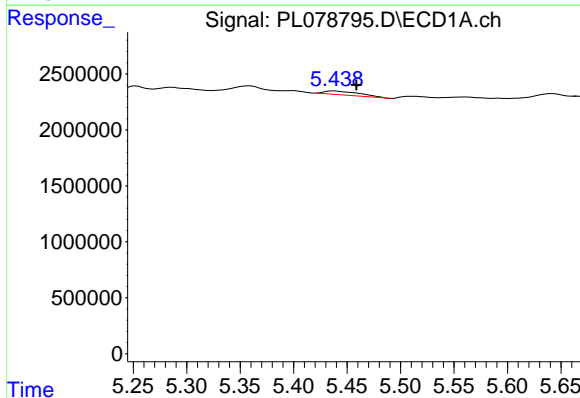
R.T.: 0.000 min
 Exp R.T.: 4.572 min
 Response: 0
 Conc: N.D.

Instrument :
 ECD_L
 ClientSampleId :



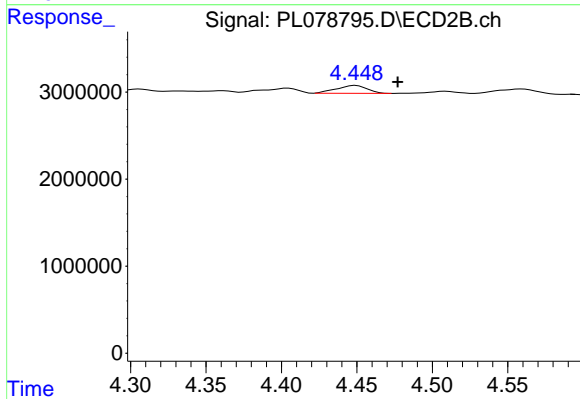
#7 delta-BHC

R.T.: 3.884 min
 Delta R.T.: -0.017 min
 Response: 767535
 Conc: 0.21 ng/ml



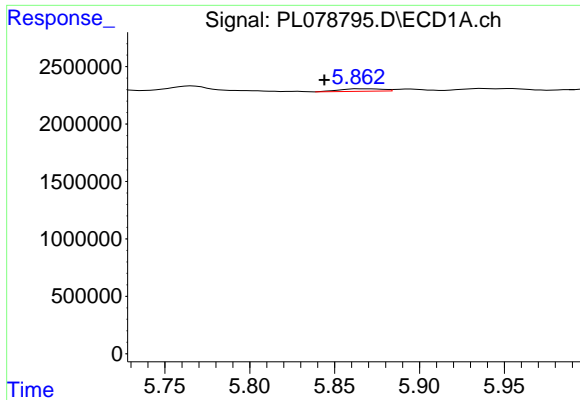
#8 Heptachlor epoxide

R.T.: 5.437 min
 Delta R.T.: -0.021 min
 Response: 782891
 Conc: 0.37 ng/ml



#8 Heptachlor epoxide

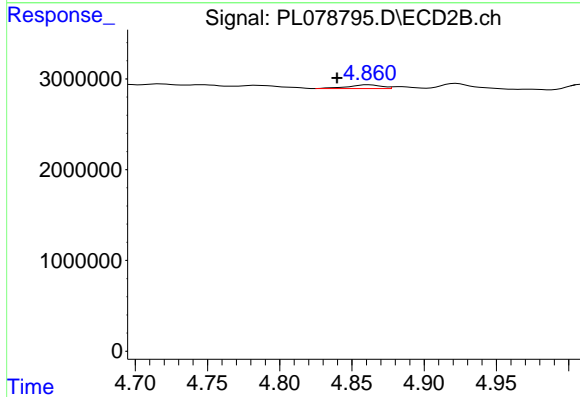
R.T.: 4.449 min
 Delta R.T.: -0.028 min
 Response: 1262297
 Conc: 0.42 ng/ml



#9 Endosulfan I

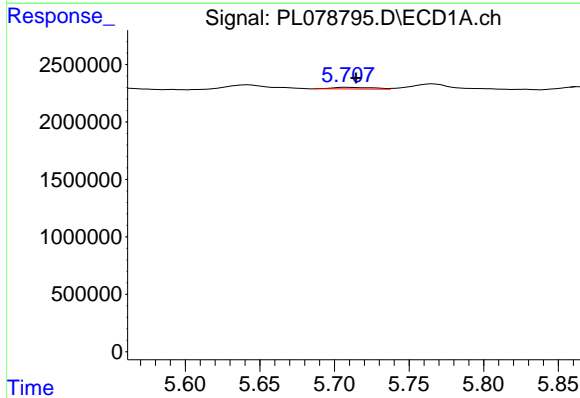
R.T.: 5.865 min
 Delta R.T.: 0.021 min
 Response: 380339
 Conc: 0.18 ng/ml

Instrument :
 ECD_L
 ClientSampleId :



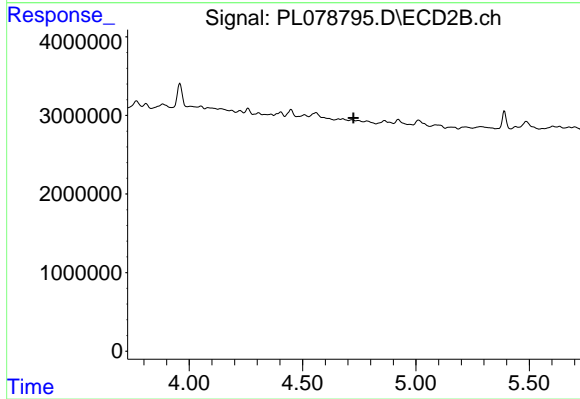
#9 Endosulfan I

R.T.: 4.862 min
 Delta R.T.: 0.022 min
 Response: 655297
 Conc: 0.23 ng/ml



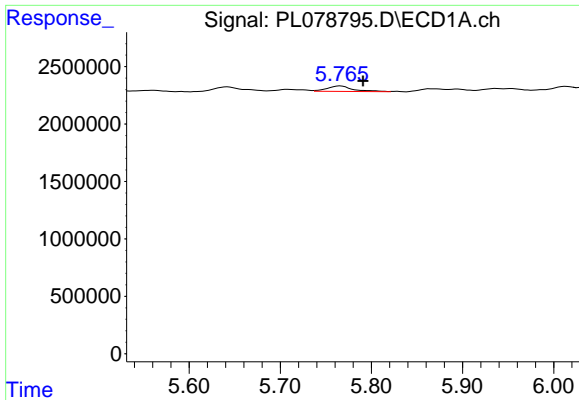
#10 gamma-Chlordane

R.T.: 5.709 min
 Delta R.T.: -0.006 min
 Response: 268148
 Conc: 0.12 ng/ml



#10 gamma-Chlordane

R.T.: 0.000 min
 Exp R.T. : 4.725 min
 Response: 0
 Conc: N.D.

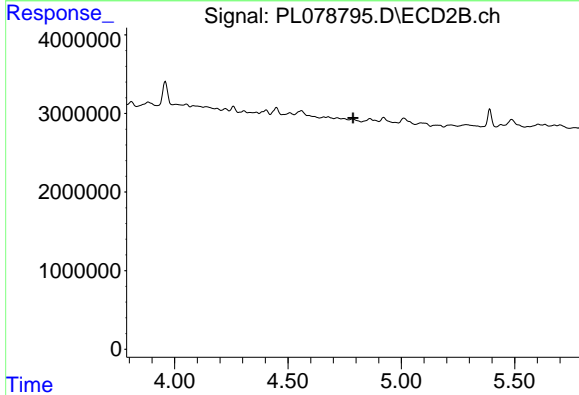


#11 alpha-Chlordane

R.T.: 5.766 min
 Delta R.T.: -0.025 min
 Response: 919486
 Conc: 0.40 ng/ml

Instrument :
 ECD_L
 ClientSampleId :

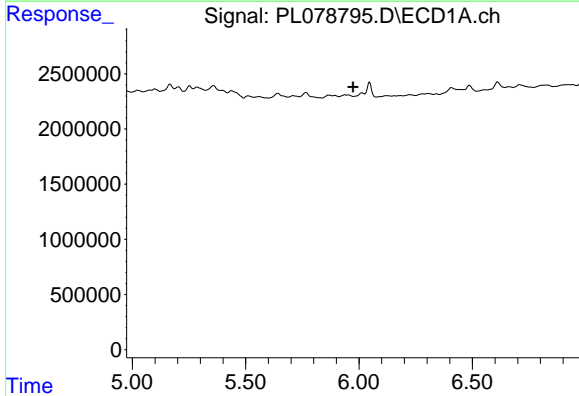
Time



#11 alpha-Chlordane

R.T.: 0.000 min
 Exp R.T. : 4.787 min
 Response: 0
 Conc: N.D.

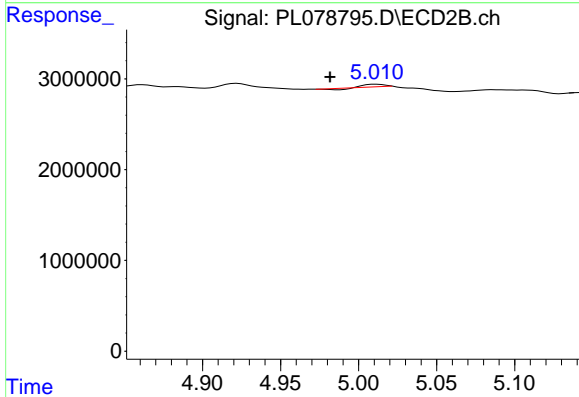
Time



#12 4,4'-DDE

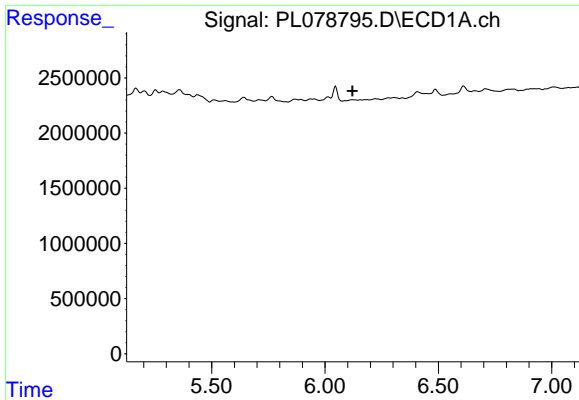
R.T.: 0.000 min
 Exp R.T. : 5.974 min
 Response: 0
 Conc: N.D.

Time



#12 4,4'-DDE

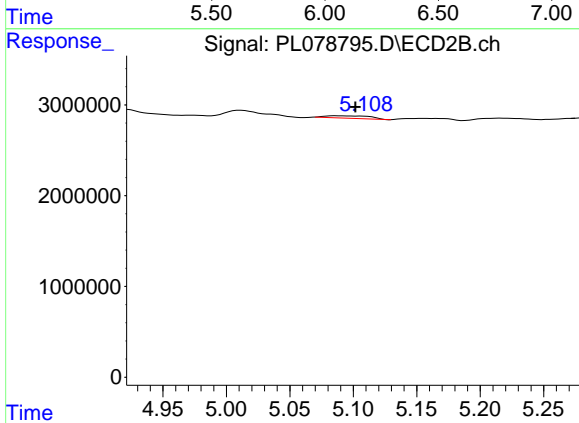
R.T.: 5.011 min
 Delta R.T.: 0.030 min
 Response: 192419
 Conc: 0.07 ng/ml



#13 Dieldrin

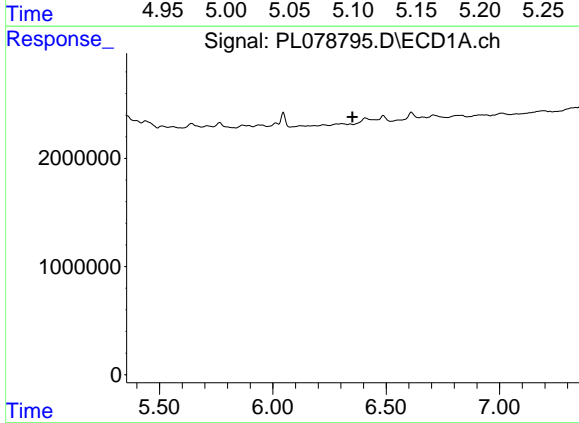
R.T.: 0.000 min
 Exp R.T. : 6.121 min
 Response: 0
 Conc: N.D.

Instrument :
 ECD_L
 ClientSampleId :



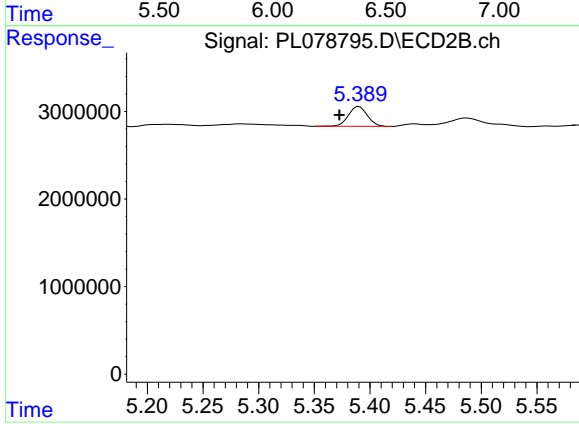
#13 Dieldrin

R.T.: 5.086 min
 Delta R.T.: -0.015 min
 Response: 662599
 Conc: 0.22 ng/ml



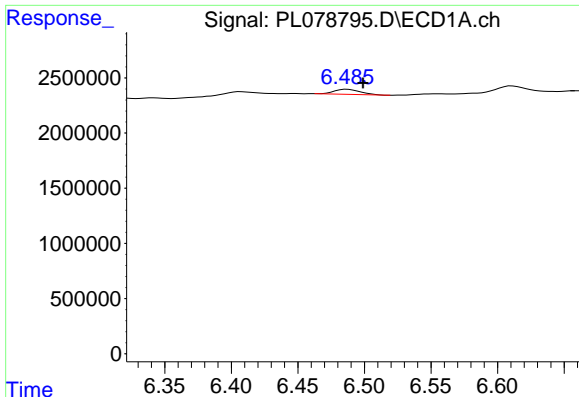
#14 Endrin

R.T.: 0.000 min
 Exp R.T. : 6.351 min
 Response: 0
 Conc: N.D.



#14 Endrin

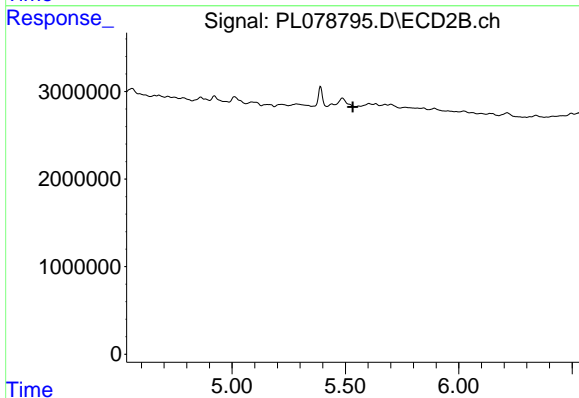
R.T.: 5.390 min
 Delta R.T.: 0.018 min
 Response: 2704838
 Conc: 1.04 ng/ml



#16 4,4'-DDD

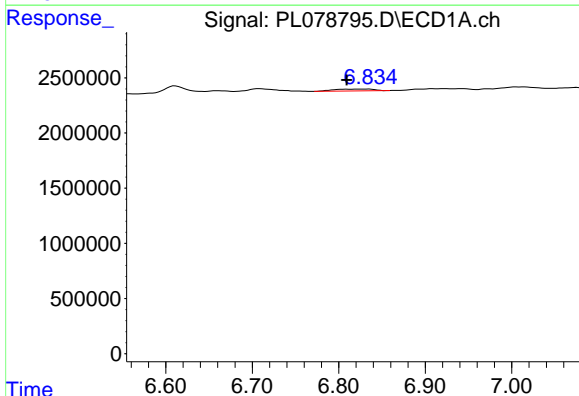
R.T.: 6.487 min
 Delta R.T.: -0.012 min
 Response: 628902
 Conc: 0.38 ng/ml

Instrument :
 ECD_L
 ClientSampleId :



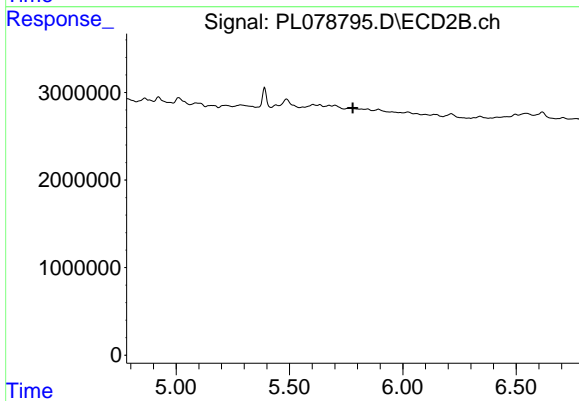
#16 4,4'-DDD

R.T.: 0.000 min
 Exp R.T. : 5.532 min
 Response: 0
 Conc: N.D.



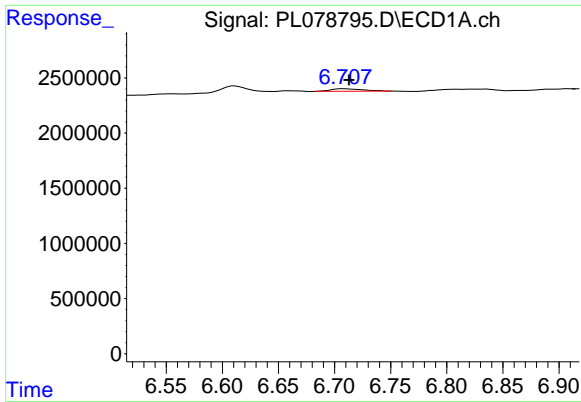
#17 4,4'-DDT

R.T.: 6.835 min
 Delta R.T.: 0.026 min
 Response: 553804
 Conc: 0.31 ng/ml



#17 4,4'-DDT

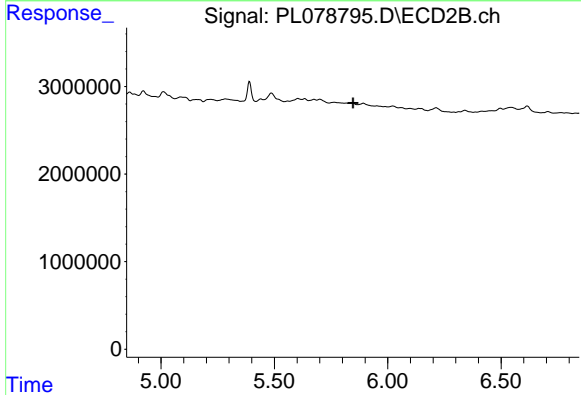
R.T.: 0.000 min
 Exp R.T. : 5.779 min
 Response: 0
 Conc: N.D.



#18 Endrin aldehyde

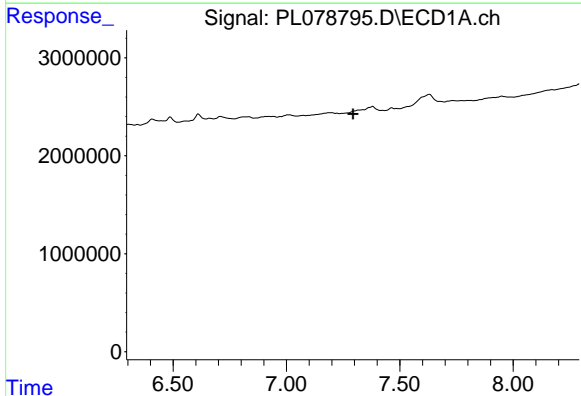
R.T.: 6.709 min
 Delta R.T.: -0.004 min
 Response: 464654
 Conc: 0.32 ng/ml

Instrument :
 ECD_L
 ClientSampleId :



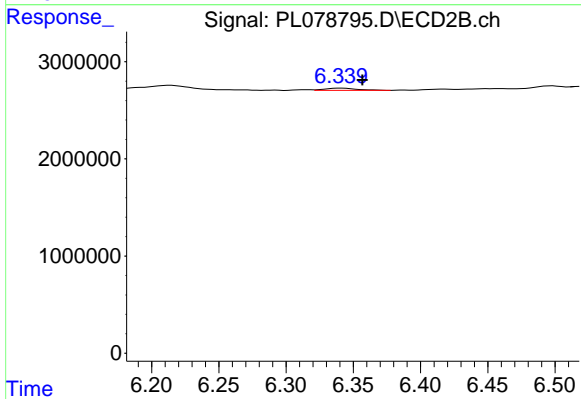
#18 Endrin aldehyde

R.T.: 0.000 min
 Exp R.T. : 5.847 min
 Response: 0
 Conc: N.D.



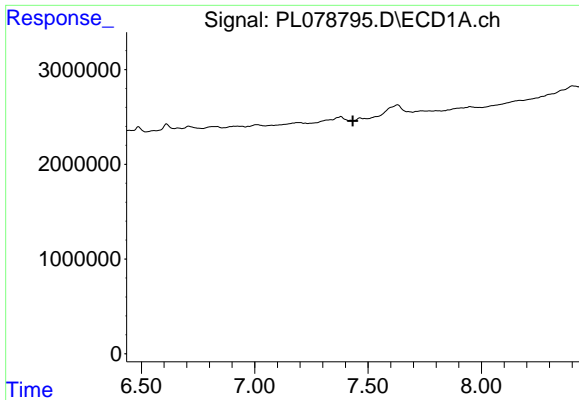
#20 Methoxychlor

R.T.: 0.000 min
 Exp R.T. : 7.294 min
 Response: 0
 Conc: N.D.



#20 Methoxychlor

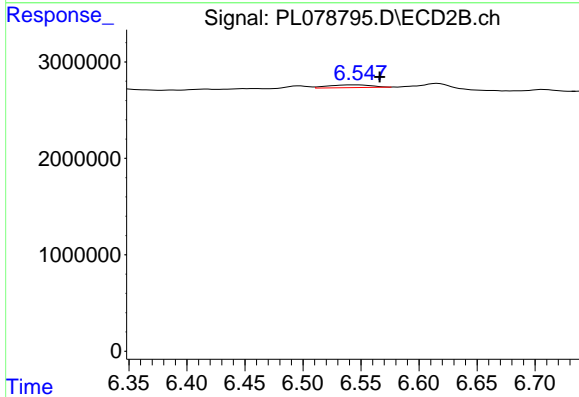
R.T.: 6.340 min
 Delta R.T.: -0.016 min
 Response: 381136
 Conc: 0.34 ng/ml



#21 Endrin ketone

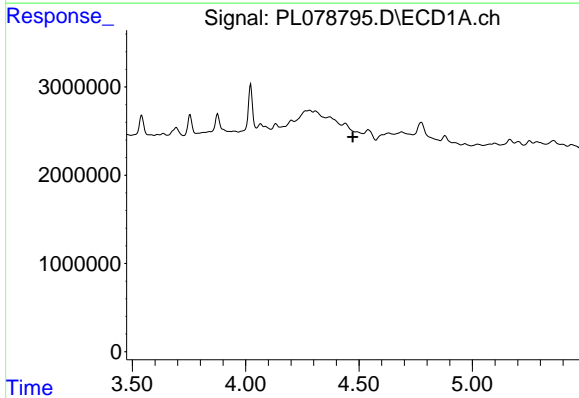
R.T.: 0.000 min
 Exp R.T.: 7.433 min
 Response: 0
 Conc: N.D.

Instrument :
 ECD_L
 ClientSampleId :



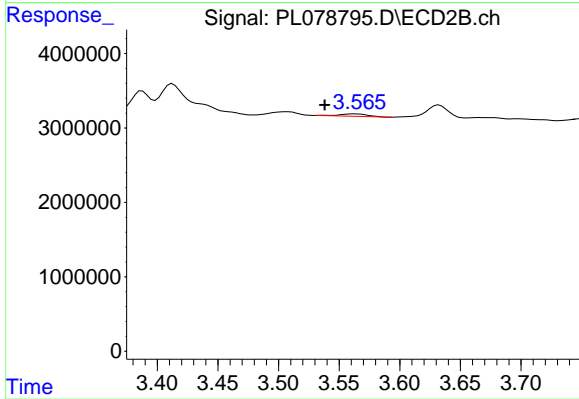
#21 Endrin ketone

R.T.: 6.548 min
 Delta R.T.: -0.018 min
 Response: 732317
 Conc: 0.28 ng/ml



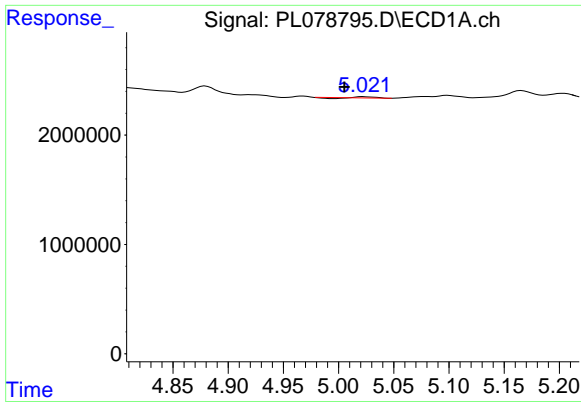
#23 Chlordane-1

R.T.: 0.000 min
 Exp R.T.: 4.472 min
 Response: 0
 Conc: N.D.



#23 Chlordane-1

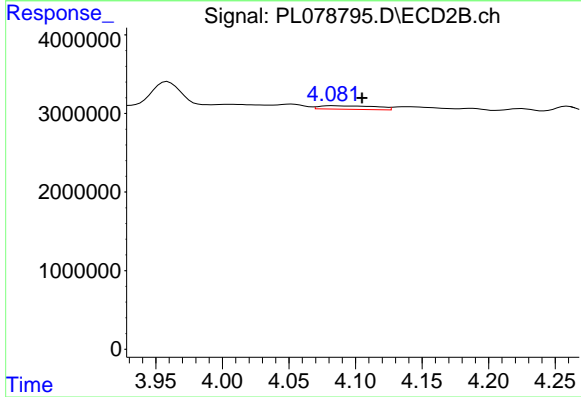
R.T.: 3.564 min
 Delta R.T.: 0.025 min
 Response: 531559
 Conc: 5.27 ng/ml



#24 Chlordane-2

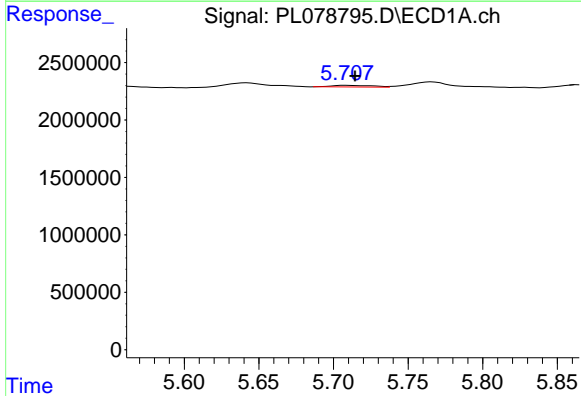
R.T.: 5.022 min
 Delta R.T.: 0.017 min
 Response: 71772
 Conc: 0.87 ng/ml

Instrument :
 ECD_L
 ClientSampleId :



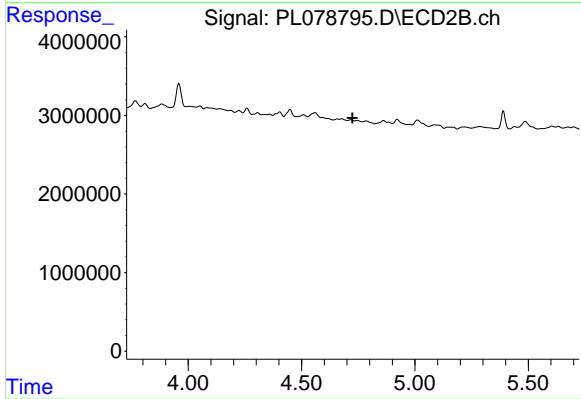
#24 Chlordane-2

R.T.: 4.083 min
 Delta R.T.: -0.022 min
 Response: 1337822
 Conc: 12.57 ng/ml



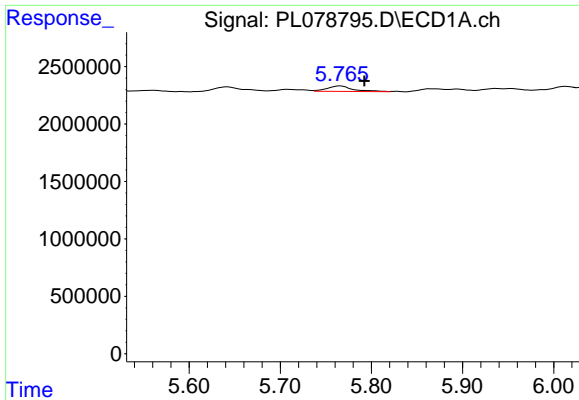
#25 Chlordane-3

R.T.: 5.709 min
 Delta R.T.: -0.006 min
 Response: 268148
 Conc: 0.80 ng/ml



#25 Chlordane-3

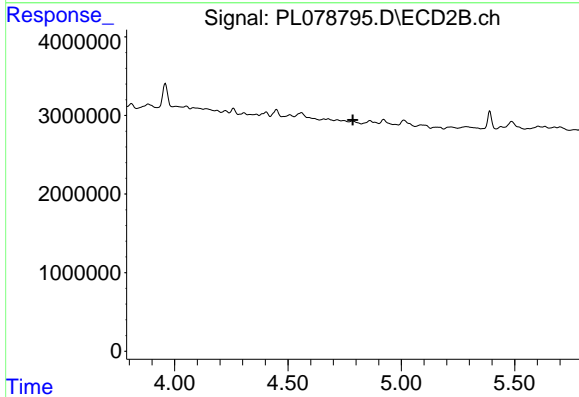
R.T.: 0.000 min
 Exp R.T. : 4.725 min
 Response: 0
 Conc: N.D.



#26 Chlordane-4

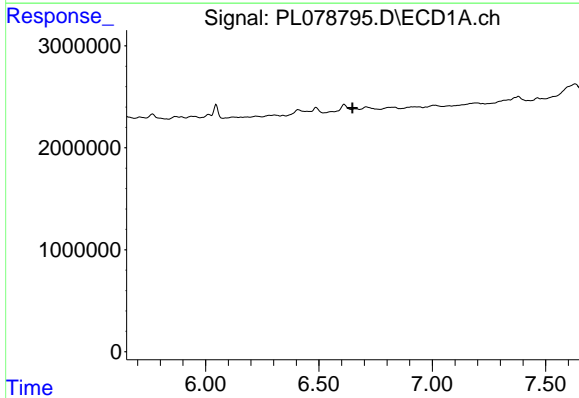
R.T.: 5.766 min
 Delta R.T.: -0.026 min
 Response: 919486
 Conc: 2.24 ng/ml

Instrument :
 ECD_L
 ClientSampleId :



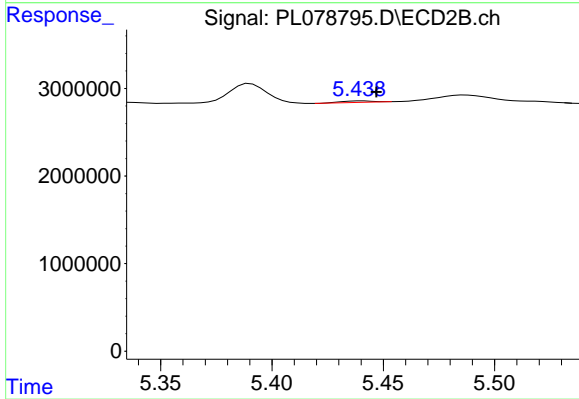
#26 Chlordane-4

R.T.: 0.000 min
 Exp R.T. : 4.785 min
 Response: 0
 Conc: N.D.



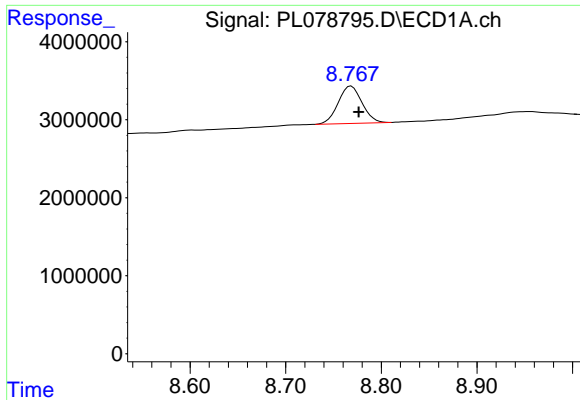
#27 Chlordane-5

R.T.: 0.000 min
 Exp R.T. : 6.649 min
 Response: 0
 Conc: N.D.



#27 Chlordane-5

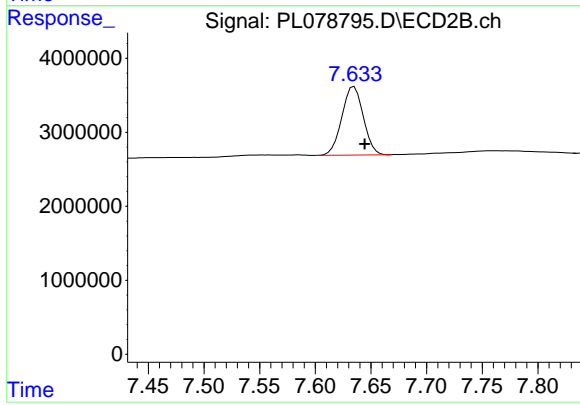
R.T.: 5.440 min
 Delta R.T.: -0.007 min
 Response: 163136
 Conc: 2.00 ng/ml



#28 Decachlorobiphenyl

R.T.: 8.769 min
Delta R.T.: -0.008 min
Response: 8294617
Conc: 5.51 ng/ml

Instrument :
ECD_L
ClientSampleId :



#28 Decachlorobiphenyl

R.T.: 7.635 min
Delta R.T.: -0.009 min
Response: 12411006
Conc: 6.55 ng/ml