

Data Path : Z:\pestpcbsrv\HPCHEM1\ECD_L\Data\PL110323\
 Data File : PL086405.D
 Signal(s) : Signal #1: ECD1A.ch Signal #2: ECD2B.ch
 Acq On : 02 Nov 2023 17:31
 Operator : AR\AJ
 Sample : 05214-04
 Misc :
 ALS Vial : 9 Sample Multiplier: 1

Instrument :
 ECD_L
 ClientSampleId :
 VNJ-221

Integration File signal 1: autoint1.e
 Integration File signal 2: autoint2.e
 Quant Time: Nov 02 21:37:54 2023
 Quant Method : Z:\pestpcbsrv\HPCHEM1\ECD_L\methods\PL110123.M
 Quant Title : GC Extractables
 QLast Update : Thu Nov 02 05:32:51 2023
 Response via : Initial Calibration
 Integrator: ChemStation

Volume Inj. : 1 µl
 Signal #1 Phase : ZB-MR2 Signal #2 Phase: ZB-MR1
 Signal #1 Info : 30M x 0.32mm x0.2 Signal #2 Info : 30M x 0.32mm x0.5µm

Compound	RT#1	RT#2	Resp#1	Resp#2	ng/ml	ng/ml

System Monitoring Compounds						
1) SA Tetrachlo...	3.353	2.618	49380300	15334523	15.560	16.108
28) SA Decachlor...	8.852	7.768	38575925	15773704	14.586	13.752
Target Compounds						
10) B gamma-Chl...	5.752	4.813	9109816	1122482	2.296	0.949 #
11) B alpha-Chl...	5.835	4.874	16830110	2639494	4.228	2.113 #
16) A 4,4'-DDD	6.533	5.629	4658871	884278	1.964	1.086 #

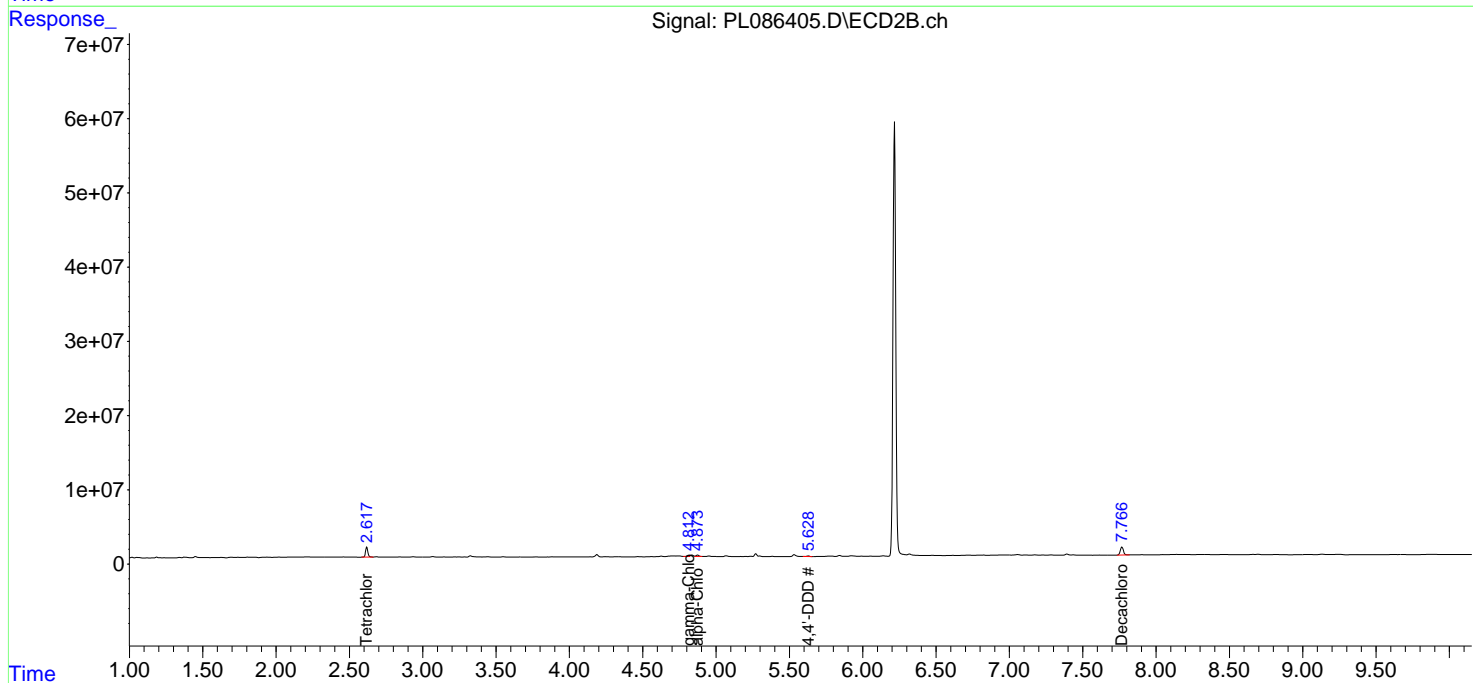
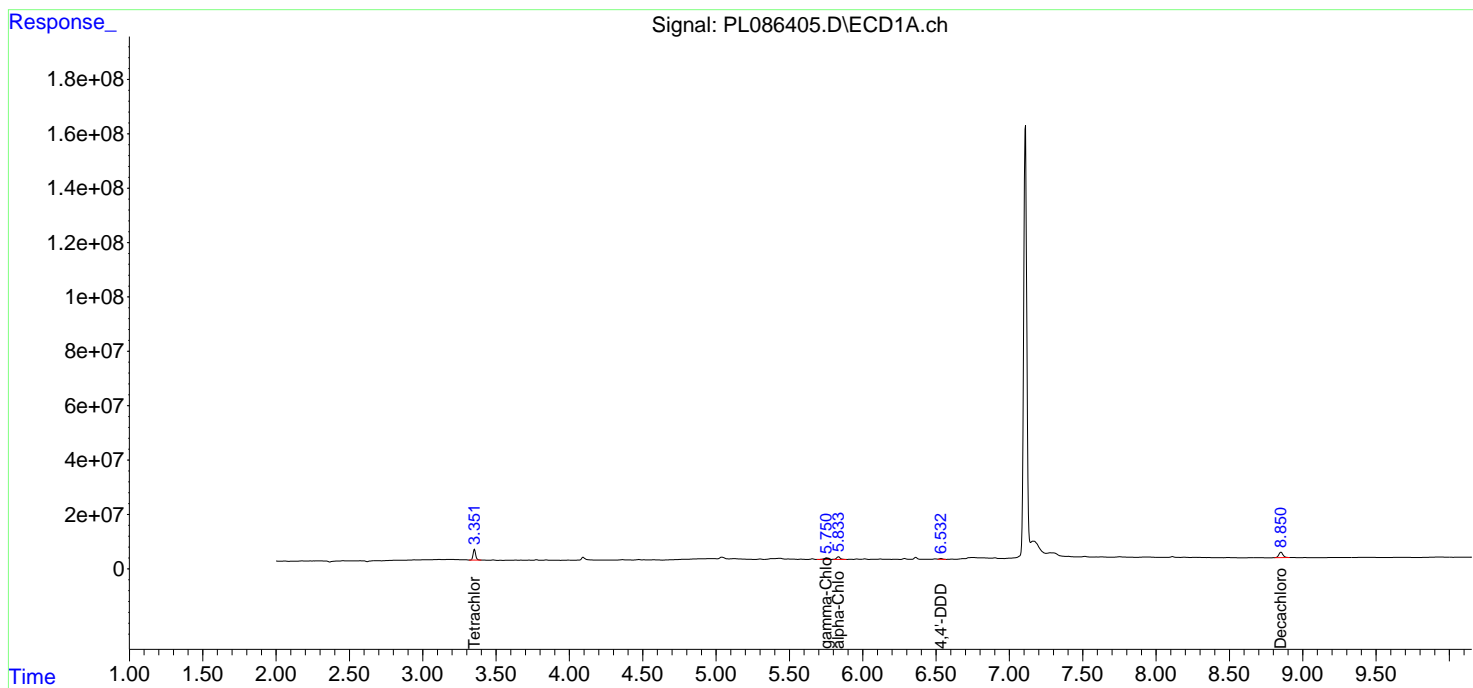
(f)=RT Delta > 1/2 Window (#)=Amounts differ by > 25% (m)=manual int.

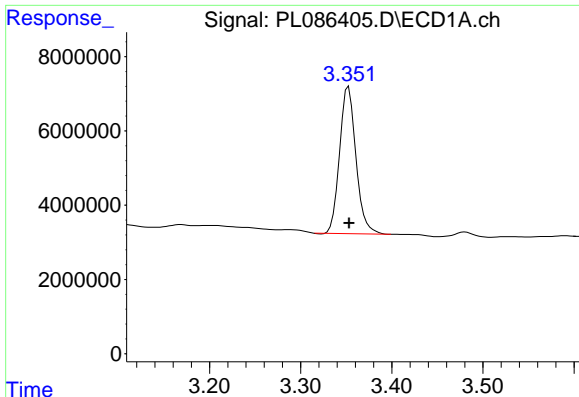
Data Path : Z:\pestpcbsrv\HPCHEM1\ECD_L\Data\PL110323\
 Data File : PL086405.D
 Signal(s) : Signal #1: ECD1A.ch Signal #2: ECD2B.ch
 Acq On : 02 Nov 2023 17:31
 Operator : AR\AJ
 Sample : 05214-04
 Misc :
 ALS Vial : 9 Sample Multiplier: 1

Instrument :
 ECD_L
 ClientSampleId :
 VNJ-221

Integration File signal 1: autoint1.e
 Integration File signal 2: autoint2.e
 Quant Time: Nov 02 21:37:54 2023
 Quant Method : Z:\pestpcbsrv\HPCHEM1\ECD_L\methods\PL110123.M
 Quant Title : GC Extractables
 QLast Update : Thu Nov 02 05:32:51 2023
 Response via : Initial Calibration
 Integrator: ChemStation

Volume Inj. : 1 µl
 Signal #1 Phase : ZB-MR2 Signal #2 Phase: ZB-MR1
 Signal #1 Info : 30M x 0.32mm x0.2 Signal #2 Info : 30M x 0.32mm x0.5µm

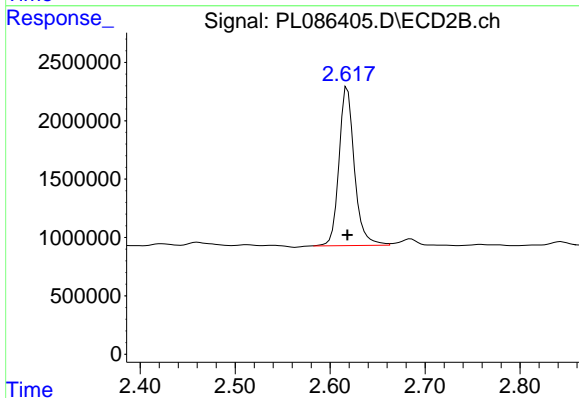




#1 Tetrachloro-m-xylene

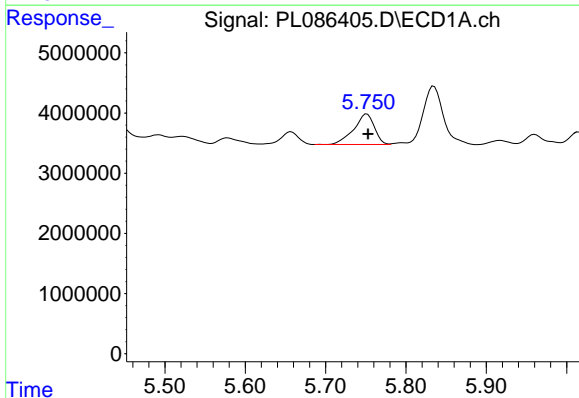
R.T.: 3.353 min
 Delta R.T.: 0.000 min
 Response: 49380300
 Conc: 15.56 ng/ml

Instrument :
 ECD_L
 ClientSampleId :
 VNJ-221



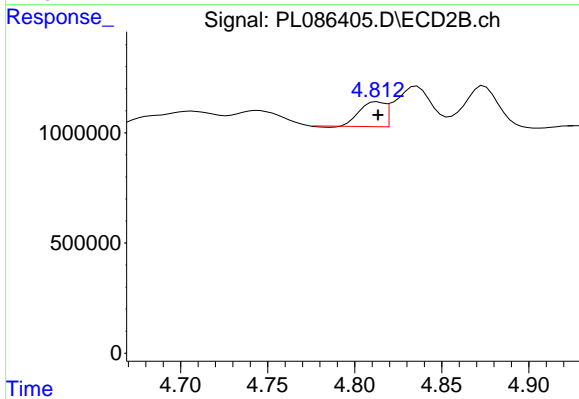
#1 Tetrachloro-m-xylene

R.T.: 2.618 min
 Delta R.T.: 0.000 min
 Response: 15334523
 Conc: 16.11 ng/ml



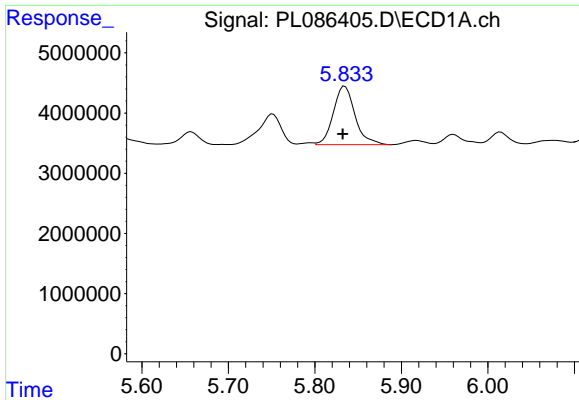
#10 gamma-Chlordane

R.T.: 5.752 min
 Delta R.T.: -0.002 min
 Response: 9109816
 Conc: 2.30 ng/ml



#10 gamma-Chlordane

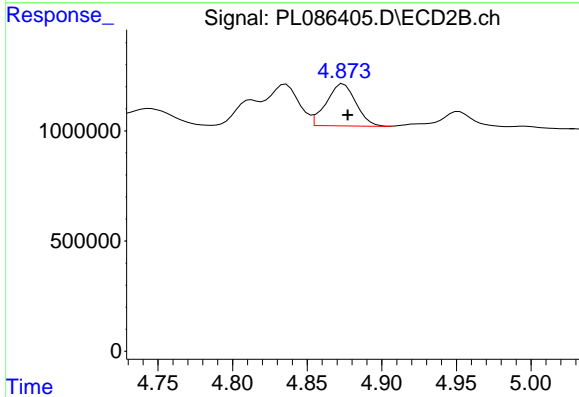
R.T.: 4.813 min
 Delta R.T.: 0.000 min
 Response: 1122482
 Conc: 0.95 ng/ml



#11 alpha-Chlordane

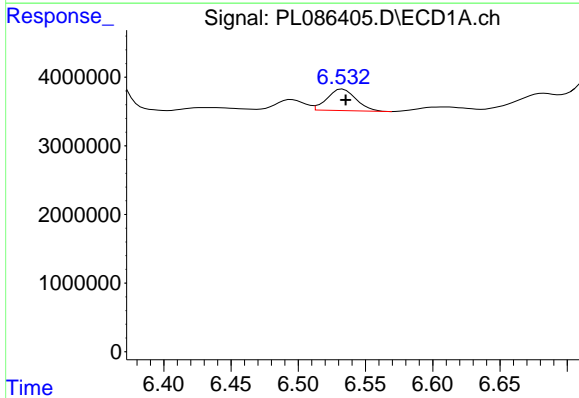
R.T.: 5.835 min
 Delta R.T.: 0.003 min
 Response: 16830110
 Conc: 4.23 ng/ml

Instrument :
 ECD_L
 ClientSampleId :
 VNJ-221



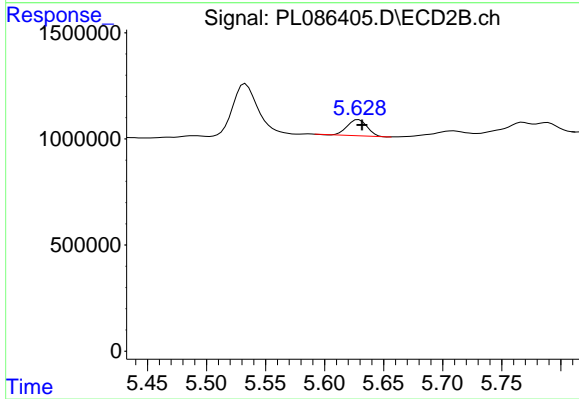
#11 alpha-Chlordane

R.T.: 4.874 min
 Delta R.T.: -0.003 min
 Response: 2639494
 Conc: 2.11 ng/ml



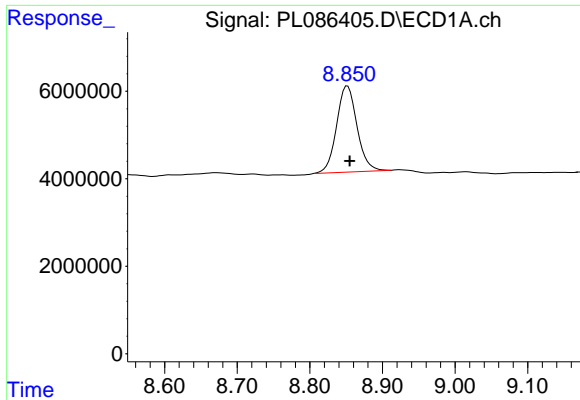
#16 4,4'-DDD

R.T.: 6.533 min
 Delta R.T.: -0.002 min
 Response: 4658871
 Conc: 1.96 ng/ml



#16 4,4'-DDD

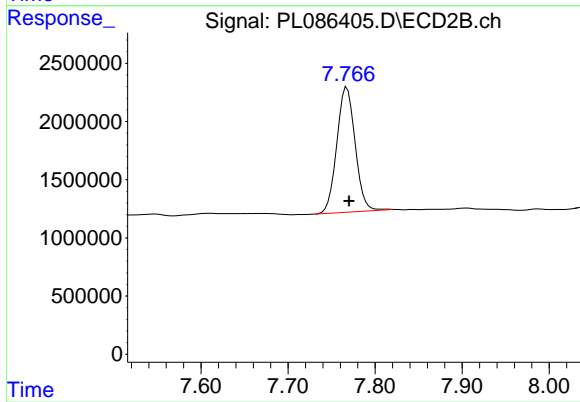
R.T.: 5.629 min
 Delta R.T.: -0.003 min
 Response: 884278
 Conc: 1.09 ng/ml



#28 Decachlorobiphenyl

R.T.: 8.852 min
 Delta R.T.: -0.003 min
 Response: 38575925
 Conc: 14.59 ng/ml

Instrument :
 ECD_L
 ClientSampleId :
 VNJ-221



#28 Decachlorobiphenyl

R.T.: 7.768 min
 Delta R.T.: -0.002 min
 Response: 15773704
 Conc: 13.75 ng/ml