

Data Path : Z:\pestpcbsrv\HPCHEM1\ECD_L\Data\PL110423\
 Data File : PL086433.D
 Signal(s) : Signal #1: ECD1A.ch Signal #2: ECD2B.ch
 Acq On : 03 Nov 2023 15:49
 Operator : AR\AJ
 Sample : INDA501
 Misc :
 ALS Vial : 17 Sample Multiplier: 1

Instrument :
 ECD_L
 ClientSampleId :
 INDA5314

Integration File signal 1: autoint1.e
 Integration File signal 2: autoint2.e
 Quant Time: Nov 03 16:37:16 2023
 Quant Method : Z:\pestpcbsrv\HPCHEM1\ECD_L\methods\PL110423CLP.M
 Quant Title : GC Extractables
 QLast Update : Fri Nov 03 16:33:54 2023
 Response via : Initial Calibration
 Integrator: ChemStation

Volume Inj. : 1 µl
 Signal #1 Phase : ZB-MR2 Signal #2 Phase: ZB-MR1
 Signal #1 Info : 30M x 0.32mm x0.2 Signal #2 Info : 30M x 0.32mm x 0.50µm

Compound	RT#1	RT#2	Resp#1	Resp#2	ng/ml	ng/ml

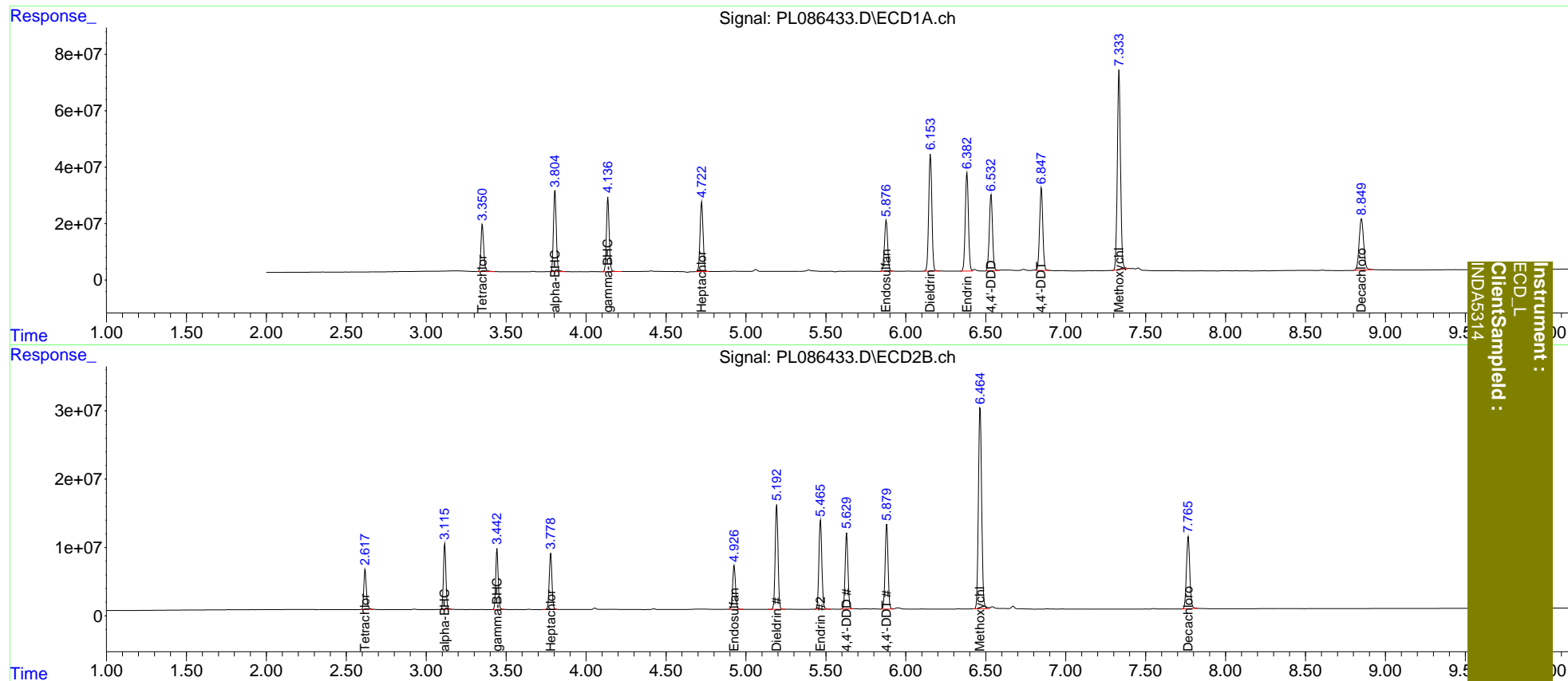
System Monitoring Compounds						
1) SA Tetrachlo...	3.352	2.618	207.2E6	65083677	79.707	80.632
27) SA Decachlor...	8.850	7.767	353.7E6	154.4E6	154.643	153.576
Target Compounds						
2) A alpha-BHC	3.806	3.116	347.3E6	101.5E6	85.301	86.671
3) MA gamma-BHC...	4.137	3.443	318.4E6	95853052	83.360	84.897
4) MA Heptachlor	4.724	3.779	322.0E6	96778058	81.513	82.349
9) A Endosulfan I	5.877	4.927	246.9E6	79587495	80.791	81.564
13) MA Dieldrin	6.154	5.193	570.4E6	189.6E6	166.291	168.554
14) MA Endrin	6.383	5.467	479.3E6	166.2E6	163.850	165.771
16) A 4,4'-DDD	6.533	5.630	375.9E6	137.8E6	166.168	170.756
17) MA 4,4'-DDT	6.848	5.881	411.4E6	156.8E6	168.222	169.629
20) A Methoxychlor	7.334	6.465	992.8E6	416.6E6	790.959	785.146

(f)=RT Delta > 1/2 Window (#)=Amounts differ by > 25% (m)=manual int.

Data Path : Z:\pestpcbsrv\HPCHEM1\ECD_L\Data\PL110423\
 Data File : PL086433.D
 Signal(s) : Signal #1: ECD1A.ch Signal #2: ECD2B.ch
 Acq On : 03 Nov 2023 15:49
 Operator : AR\AJ
 Sample : INDA501
 Misc :
 ALS Vial : 17 Sample Multiplier: 1

Integration File signal 1: autoint1.e
 Integration File signal 2: autoint2.e
 Quant Time: Nov 03 16:37:16 2023
 Quant Method : Z:\pestpcbsrv\HPCHEM1\ECD_L\methods\PL110423CLP.M
 Quant Title : GC Extractables
 QLast Update : Fri Nov 03 16:33:54 2023
 Response via : Initial Calibration
 Integrator: ChemStation

Volume Inj. : 1 µl
 Signal #1 Phase : ZB-MR2 Signal #2 Phase: ZB-MR1
 Signal #1 Info : 30M x 0.32mm x0.2 Signal #2 Info : 30M x 0.32mm x 0.50µm



Instrument :
 ECD_L
 ClientSampled :
 INDAS314