

Data Path : Z:\pestpcbsrv\HPCHEM1\ECD_L\Data\PL110518\
 Data File : PL041777.D
 Signal(s) : Signal #1: ECD1A.ch Signal #2: ECD2B.ch
 Acq On : 05 Nov 2018 15:31
 Operator : AJ\SJ
 Sample : J5815-05
 Misc :
 ALS Vial : 25 Sample Multiplier: 1

Instrument :
 ECD_L
 ClientSampleId :

Integration File signal 1: autoint1.e
 Integration File signal 2: autoint2.e
 Quant Time: Nov 05 23:46:54 2018
 Quant Method : Z:\pestpcbsrv\HPCHEM1\ECD_L\methods\PL102918.M
 Quant Title : GC Extractables
 QLast Update : Tue Oct 30 01:26:00 2018
 Response via : Initial Calibration
 Integrator: ChemStation

Volume Inj. : 2 µl
 Signal #1 Phase : ZB-MR1 Signal #2 Phase: ZB-MR2
 Signal #1 Info : 30M x 0.32mm x0.5 Signal #2 Info : 30M x 0.32mm x0.25µm

Compound	RT#1	RT#2	Resp#1	Resp#2	ng/ml	ng/ml

System Monitoring Compounds						
1) SA Tetrachlo...	3.472	4.104	100.5E6	51674568	15.777	16.776
28) SA Decachlor...	8.212	9.233	79529010	32203762	12.006	12.569
Target Compounds						
6) B beta-BHC	4.409f	0.000	4482296	0	1.189	N.D. #
23) Chlordane-1	4.347	0.000	3265212	0	11.516	N.D. #

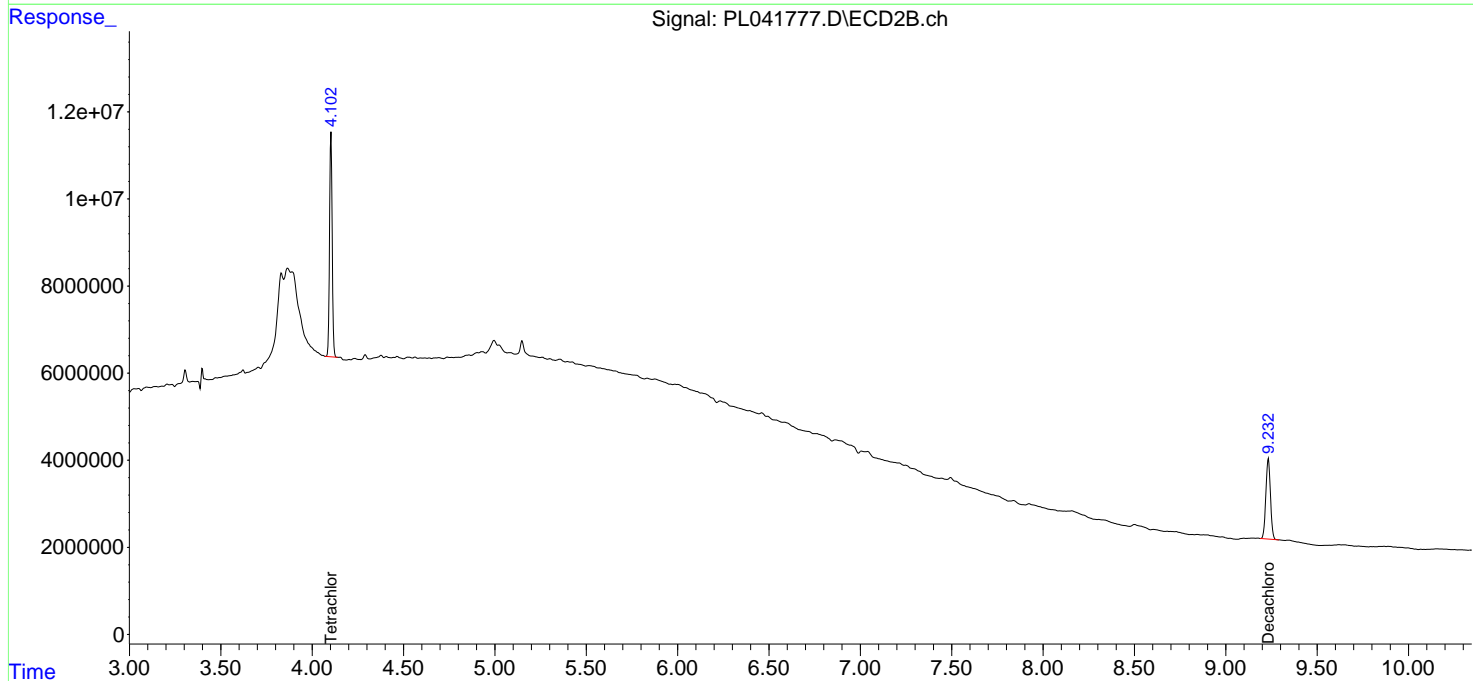
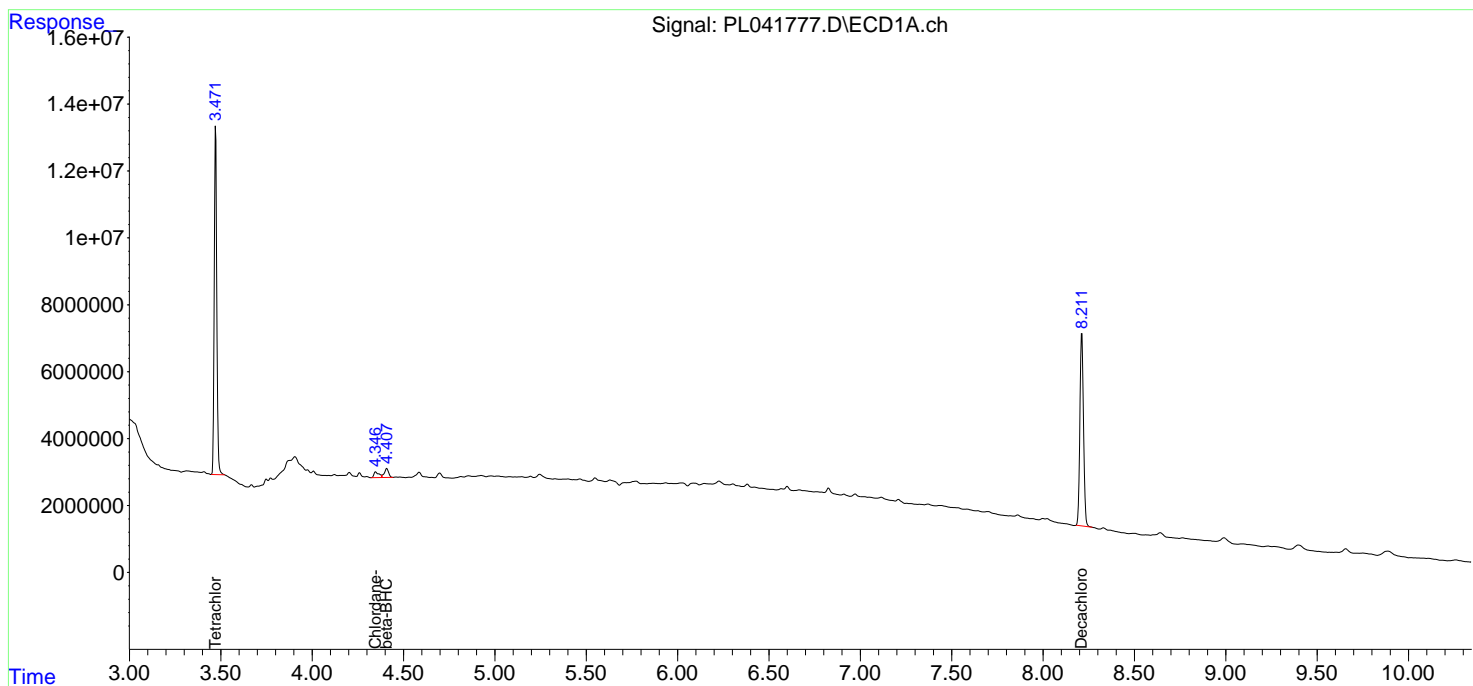
(f)=RT Delta > 1/2 Window (#)=Amounts differ by > 25% (m)=manual int.

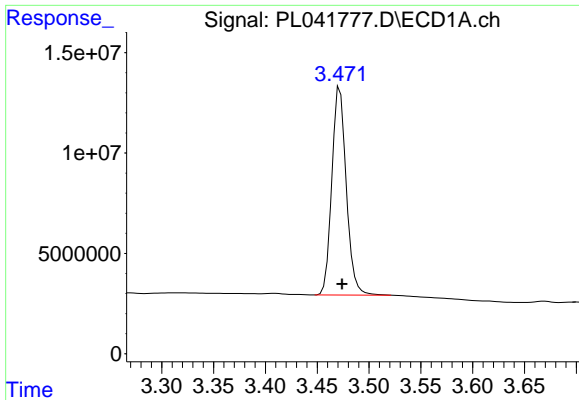
Data Path : Z:\pestpcbsrv\HPCHEM1\ECD_L\Data\PL110518\
 Data File : PL041777.D
 Signal(s) : Signal #1: ECD1A.ch Signal #2: ECD2B.ch
 Acq On : 05 Nov 2018 15:31
 Operator : AJ\SJ
 Sample : J5815-05
 Misc :
 ALS Vial : 25 Sample Multiplier: 1

Instrument :
 ECD_L
 ClientSampled :

Integration File signal 1: autoint1.e
 Integration File signal 2: autoint2.e
 Quant Time: Nov 05 23:46:54 2018
 Quant Method : Z:\pestpcbsrv\HPCHEM1\ECD_L\methods\PL102918.M
 Quant Title : GC Extractables
 QLast Update : Tue Oct 30 01:26:00 2018
 Response via : Initial Calibration
 Integrator: ChemStation

Volume Inj. : 2 µl
 Signal #1 Phase : ZB-MR1 Signal #2 Phase: ZB-MR2
 Signal #1 Info : 30M x 0.32mm x0.5 Signal #2 Info : 30M x 0.32mm x0.25µm





#1 Tetrachloro-m-xylene

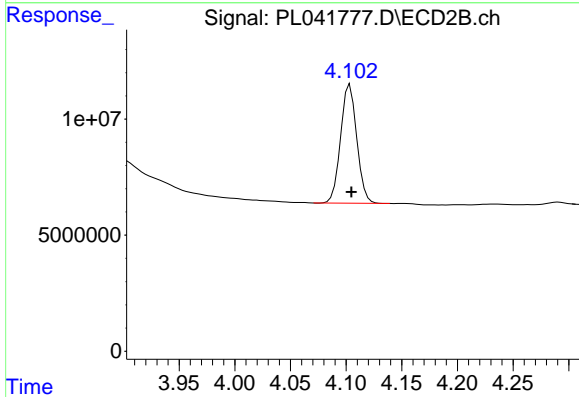
R.T.: 3.472 min

Delta R.T.: -0.002 min

Response: 100501666

Conc: 15.78 ng/ml

Instrument :
ECD_L
ClientSampleId :



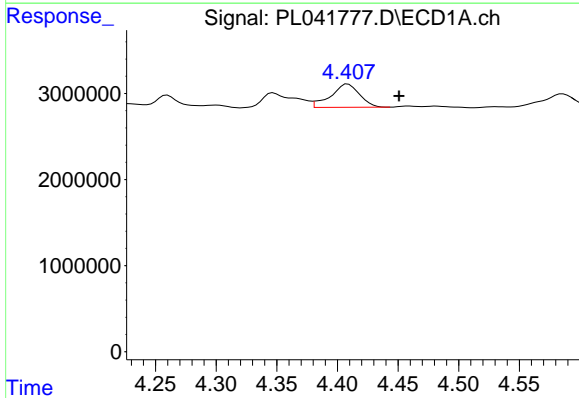
#1 Tetrachloro-m-xylene

R.T.: 4.104 min

Delta R.T.: -0.001 min

Response: 51674568

Conc: 16.78 ng/ml



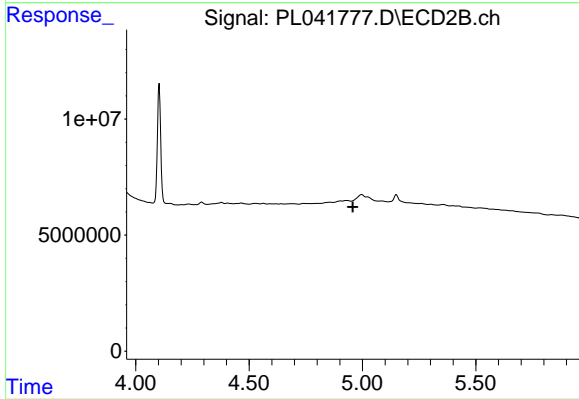
#6 beta-BHC

R.T.: 4.409 min

Delta R.T.: -0.042 min

Response: 4482296

Conc: 1.19 ng/ml



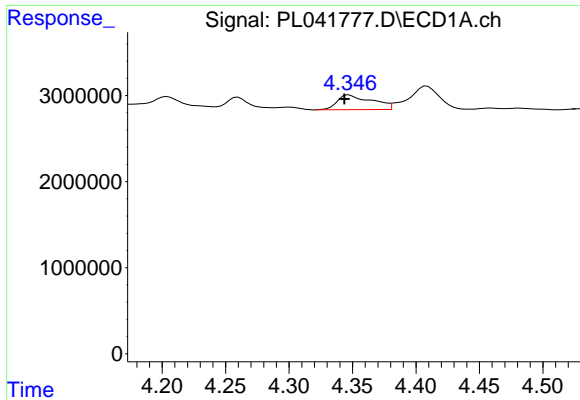
#6 beta-BHC

R.T.: 0.000 min

Exp R.T. : 4.957 min

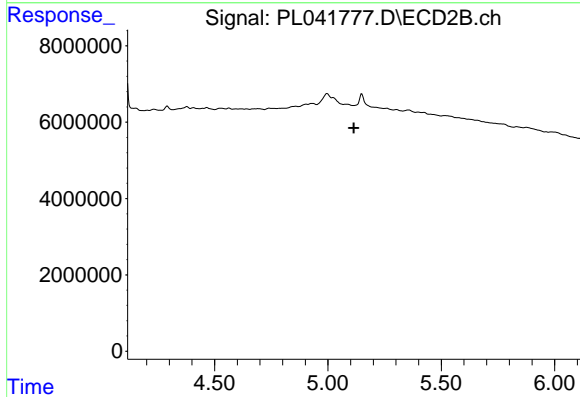
Response: 0

Conc: N.D.

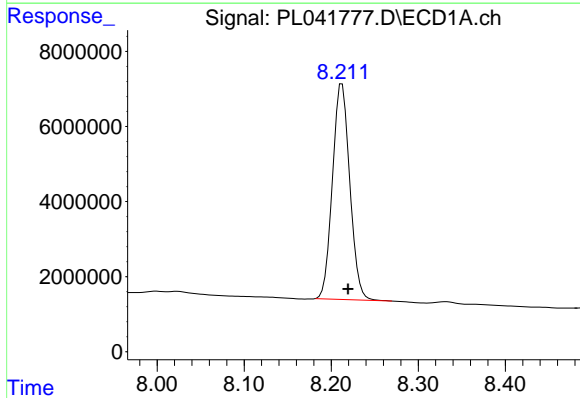


#23 Chlordane-1
 R.T.: 4.347 min
 Delta R.T.: 0.004 min
 Response: 3265212
 Conc: 11.52 ng/ml

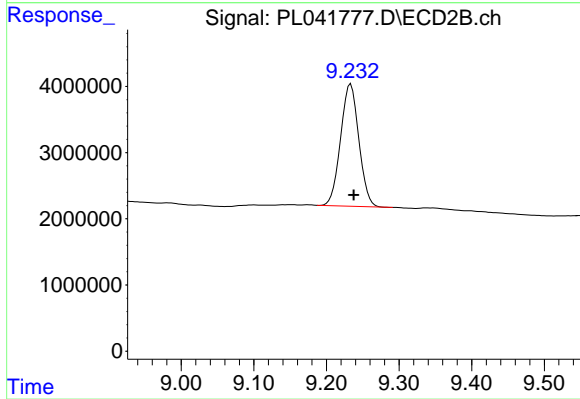
Instrument :
 ECD_L
 ClientSampleId :



#23 Chlordane-1
 R.T.: 0.000 min
 Exp R.T. : 5.115 min
 Response: 0
 Conc: N.D.



#28 Decachlorobiphenyl
 R.T.: 8.212 min
 Delta R.T.: -0.007 min
 Response: 79529010
 Conc: 12.01 ng/ml



#28 Decachlorobiphenyl
 R.T.: 9.233 min
 Delta R.T.: -0.004 min
 Response: 32203762
 Conc: 12.57 ng/ml