

Data Path : Z:\pestpcbsrv\HPCHEM1\ECD_L\Data\PL110519\
 Data File : PL054028.D
 Signal(s) : Signal #1: ECD1A.ch Signal #2: ECD2B.ch
 Acq On : 05 Nov 2019 11:49
 Operator : SG\AJ
 Sample : PB124541BL
 Misc :
 ALS Vial : 5 Sample Multiplier: 1

Instrument :
 ECD_L
 ClientSampleId :

Integration File signal 1: autoint1.e
 Integration File signal 2: autoint2.e
 Quant Time: Nov 06 00:16:07 2019
 Quant Method : Z:\pestpcbsrv\HPCHEM1\ECD_L\methods\PL101919.M
 Quant Title : GC Extractables
 QLast Update : Fri Oct 18 13:56:08 2019
 Response via : Initial Calibration
 Integrator: ChemStation

Volume Inj. : 1 µl
 Signal #1 Phase : ZB-MR2 Signal #2 Phase: ZB-MR1
 Signal #1 Info : 30M x 0.32mm x0.2 Signal #2 Info : 30M x 0.32mm x0.5µm

Compound	RT#1	RT#2	Resp#1	Resp#2	ng/ml	ng/ml

System Monitoring Compounds						
1) SA Tetrachlo...	3.546	4.044	209.4E6	46428251	19.318	18.554
28) SA Decachlor...	8.330	9.124	184.2E6	52846031	18.771	18.766
Target Compounds						
23) Chlordane-1	4.425	0.000	14240394	0	40.151	N.D. #

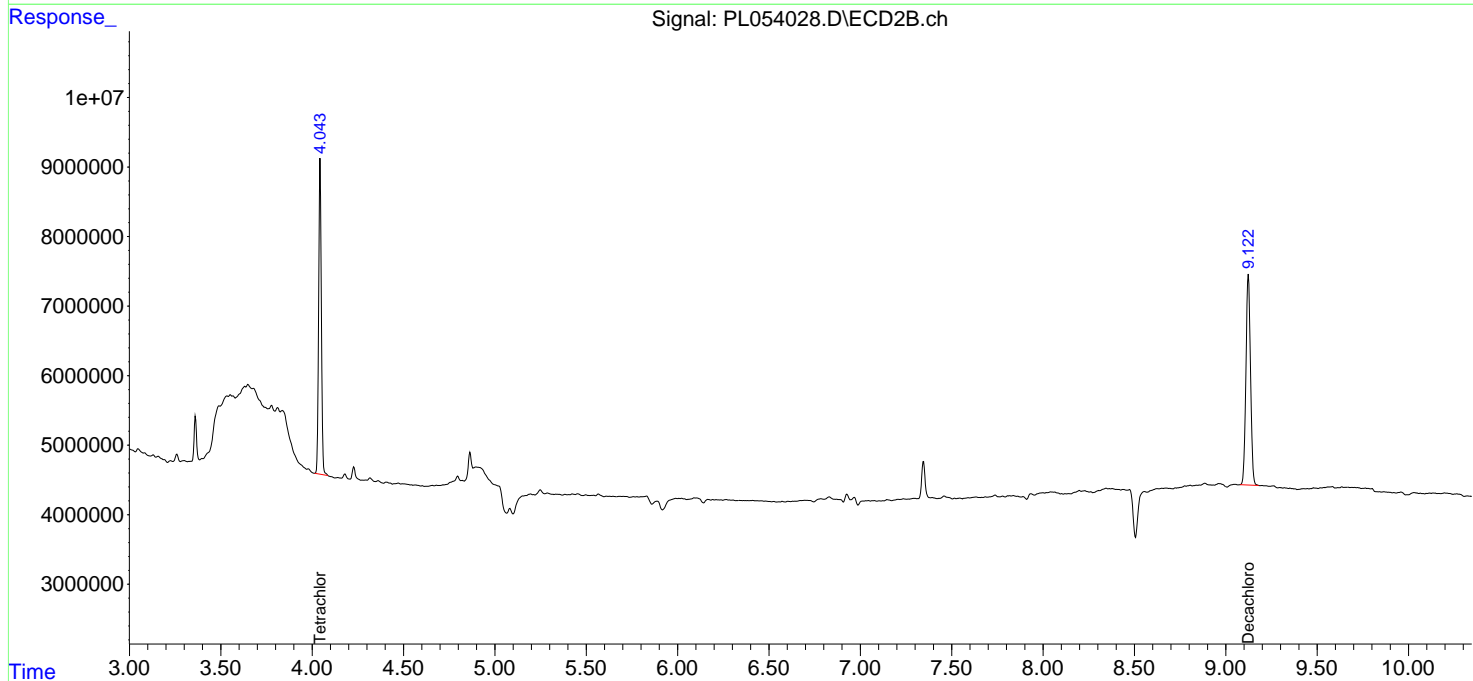
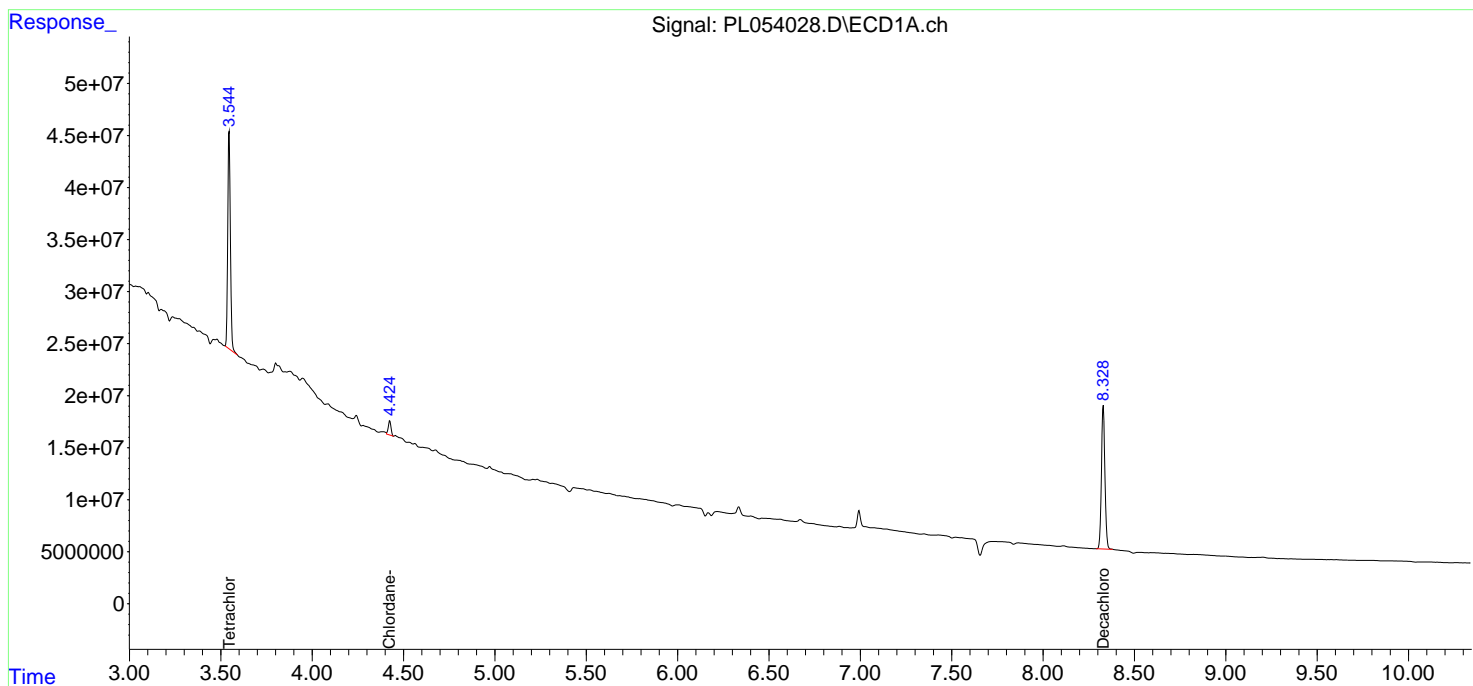
(f)=RT Delta > 1/2 Window (#)=Amounts differ by > 25% (m)=manual int.

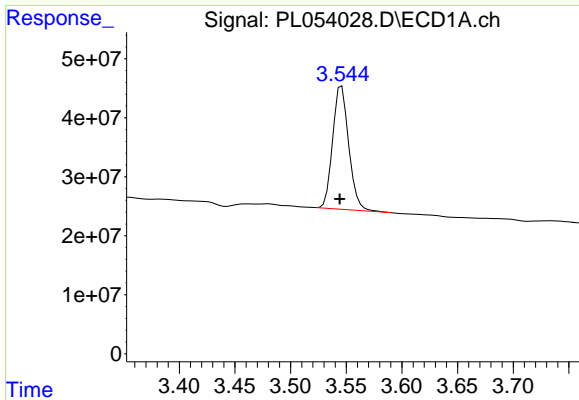
Data Path : Z:\pestpcbsrv\HPCHEM1\ECD_L\Data\PL110519\
 Data File : PL054028.D
 Signal(s) : Signal #1: ECD1A.ch Signal #2: ECD2B.ch
 Acq On : 05 Nov 2019 11:49
 Operator : SG\AJ
 Sample : PB124541BL
 Misc :
 ALS Vial : 5 Sample Multiplier: 1

Instrument :
 ECD_L
 ClientSampleId :

Integration File signal 1: autoint1.e
 Integration File signal 2: autoint2.e
 Quant Time: Nov 06 00:16:07 2019
 Quant Method : Z:\pestpcbsrv\HPCHEM1\ECD_L\methods\PL101919.M
 Quant Title : GC Extractables
 QLast Update : Fri Oct 18 13:56:08 2019
 Response via : Initial Calibration
 Integrator: ChemStation

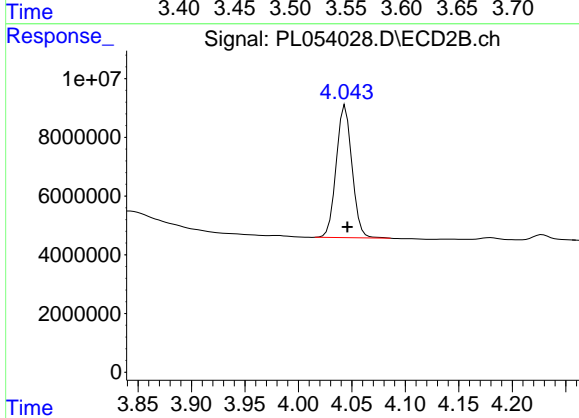
Volume Inj. : 1 µl
 Signal #1 Phase : ZB-MR2 Signal #2 Phase: ZB-MR1
 Signal #1 Info : 30M x 0.32mm x0.2 Signal #2 Info : 30M x 0.32mm x0.5µm



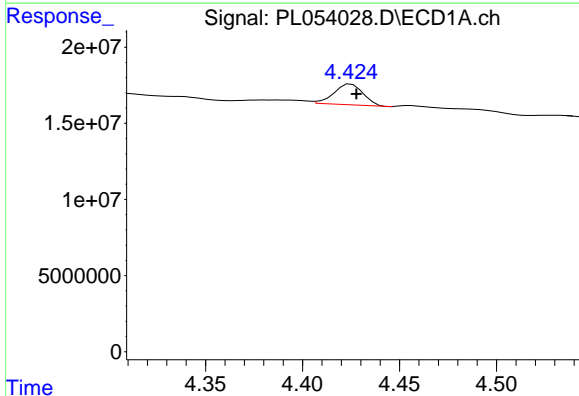


#1 Tetrachloro-m-xylene
 R.T.: 3.546 min
 Delta R.T.: 0.002 min
 Response: 209389403
 Conc: 19.32 ng/ml

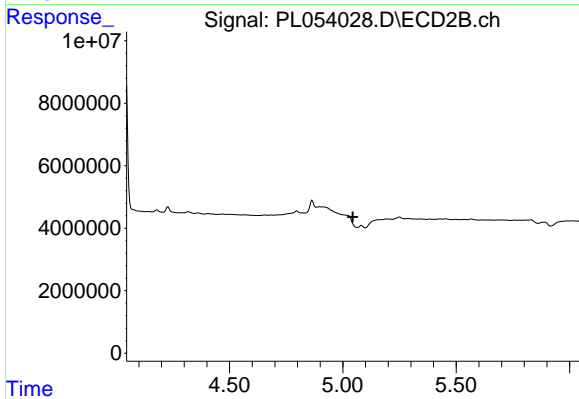
Instrument :
 ECD_L
 ClientSampleId :



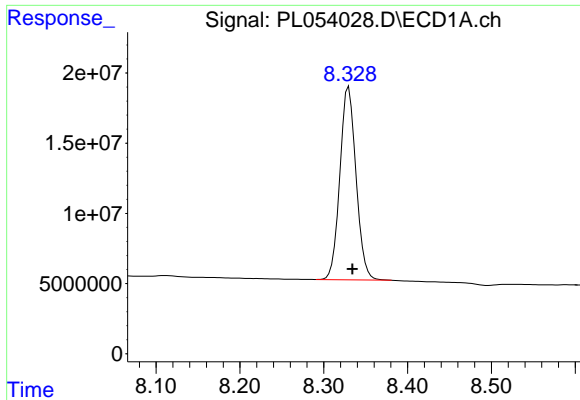
#1 Tetrachloro-m-xylene
 R.T.: 4.044 min
 Delta R.T.: -0.002 min
 Response: 46428251
 Conc: 18.55 ng/ml



#23 Chlordane-1
 R.T.: 4.425 min
 Delta R.T.: -0.003 min
 Response: 14240394
 Conc: 40.15 ng/ml



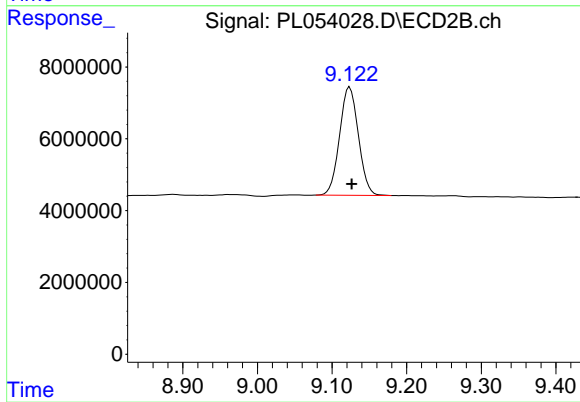
#23 Chlordane-1
 R.T.: 0.000 min
 Exp R.T.: 5.043 min
 Response: 0
 Conc: N.D.



#28 Decachlorobiphenyl

R.T.: 8.330 min
Delta R.T.: -0.004 min
Response: 184171583
Conc: 18.77 ng/ml

Instrument :
ECD_L
ClientSampleId :



#28 Decachlorobiphenyl

R.T.: 9.124 min
Delta R.T.: -0.002 min
Response: 52846031
Conc: 18.77 ng/ml