

Data Path : Z:\pestpcbsrv\HPCHEM1\ECD_L\Data\PL110623\
 Data File : PL086462.D
 Signal(s) : Signal #1: ECD1A.ch Signal #2: ECD2B.ch
 Acq On : 06 Nov 2023 10:30
 Operator : AR\AJ
 Sample : PSTDCCC050
 Misc :
 ALS Vial : 4 Sample Multiplier: 1

Instrument :
 ECD_L
 ClientSampleId :

Integration File signal 1: autoint1.e
 Integration File signal 2: autoint2.e
 Quant Time: Nov 06 12:50:51 2023
 Quant Method : Z:\pestpcbsrv\HPCHEM1\ECD_L\methods\PL110123.M
 Quant Title : GC Extractables
 QLast Update : Thu Nov 02 05:32:51 2023
 Response via : Initial Calibration
 Integrator: ChemStation

Volume Inj. : 1 µl
 Signal #1 Phase : ZB-MR2 Signal #2 Phase: ZB-MR1
 Signal #1 Info : 30M x 0.32mm x0.2 Signal #2 Info : 30M x 0.32mm x0.5µm

	Compound	RT#1	RT#2	Resp#1	Resp#2	ng/ml	ng/ml

System Monitoring Compounds							
1)	SA Tetrachlo...	3.362	2.618	145.5E6	45651631	45.850	47.954
28)	SA Decachlor...	8.865	7.772	118.3E6	54488176	44.747	47.503
Target Compounds							
2)	A alpha-BHC	3.817	3.117	214.7E6	63996432	45.478	49.313
3)	MA gamma-BHC...	4.149	3.445	211.8E6	63338266	46.476	48.219
4)	MA Heptachlor	4.736	3.780	202.4E6	63625527	46.429	49.045
5)	MB Aldrin	5.076	4.058	202.4E6	61138430	45.698	47.977
6)	B beta-BHC	4.353	3.747	82855213	26529950	42.008	46.226
7)	B delta-BHC	4.595	3.972	198.3E6	59682553	45.445	47.216
8)	Heptachlo...	5.506	4.563	170.1E6	56924940	43.973	47.615
9)	A Endosulfan I	5.889	4.931	168.6E6	53149252	45.856	44.783
10)	B gamma-Chl...	5.763	4.815	181.0E6	57022340	45.626	48.186
11)	B alpha-Chl...	5.842	4.878	180.9E6	58128639	45.445	46.532
12)	B 4,4'-DDE	6.026	5.078	150.3E6	47999207	47.358	48.639
13)	MA Dieldrin	6.166	5.197	176.3E6	56074748	45.865	46.957
14)	MA Endrin	6.395	5.470	133.6E6	50208528	40.018	45.564
15)	B Endosulfa...	6.617	5.769	155.3E6	51622920	48.217	47.892
16)	A 4,4'-DDD	6.545	5.634	142.0E6	39780326	59.869	48.841
17)	MA 4,4'-DDT	6.860	5.885	123.0E6	47491547	47.140	50.376
18)	B Endrin al...	6.749	5.950	109.4E6	40229118	44.940	47.704
19)	B Endosulfa...	6.985	6.175	142.1E6	50423427	46.004	47.827
20)	A Methoxychlor	7.345	6.470	67671248	28193284	48.789	48.248
21)	B Endrin ke...	7.466	6.676	151.5E6	60524991	47.481	48.529
22)	Mirex	7.939	6.853	123.0E6	50841975	45.092	44.440
23)	Chlordane-1	0.000	3.597	0	229891	N.D.	6.575 #
24)	Chlordane-2	0.000	4.174	0	1306568	N.D.	28.629 #
25)	Chlordane-3	5.763	4.815	181.0E6	57022340	314.234	476.714 #
26)	Chlordane-4	5.842	4.878	180.9E6	58128639	253.551	435.013 #

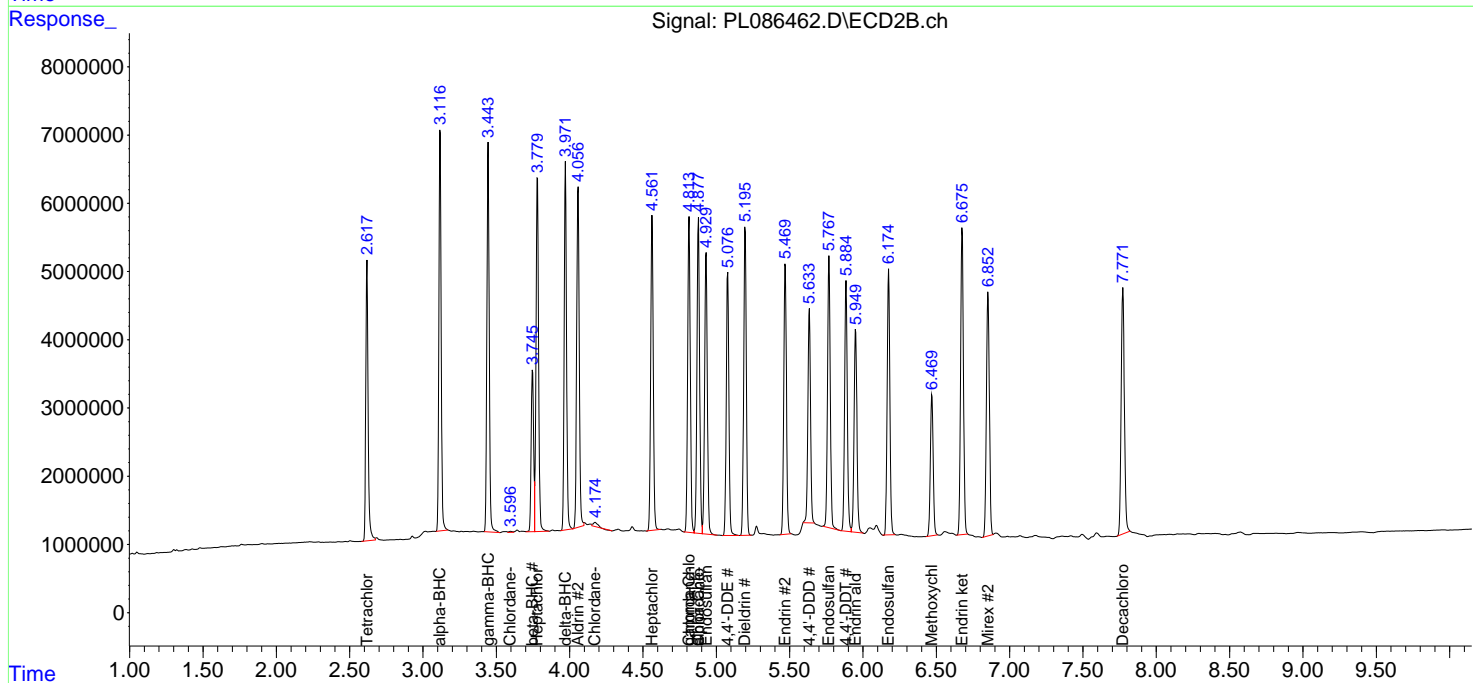
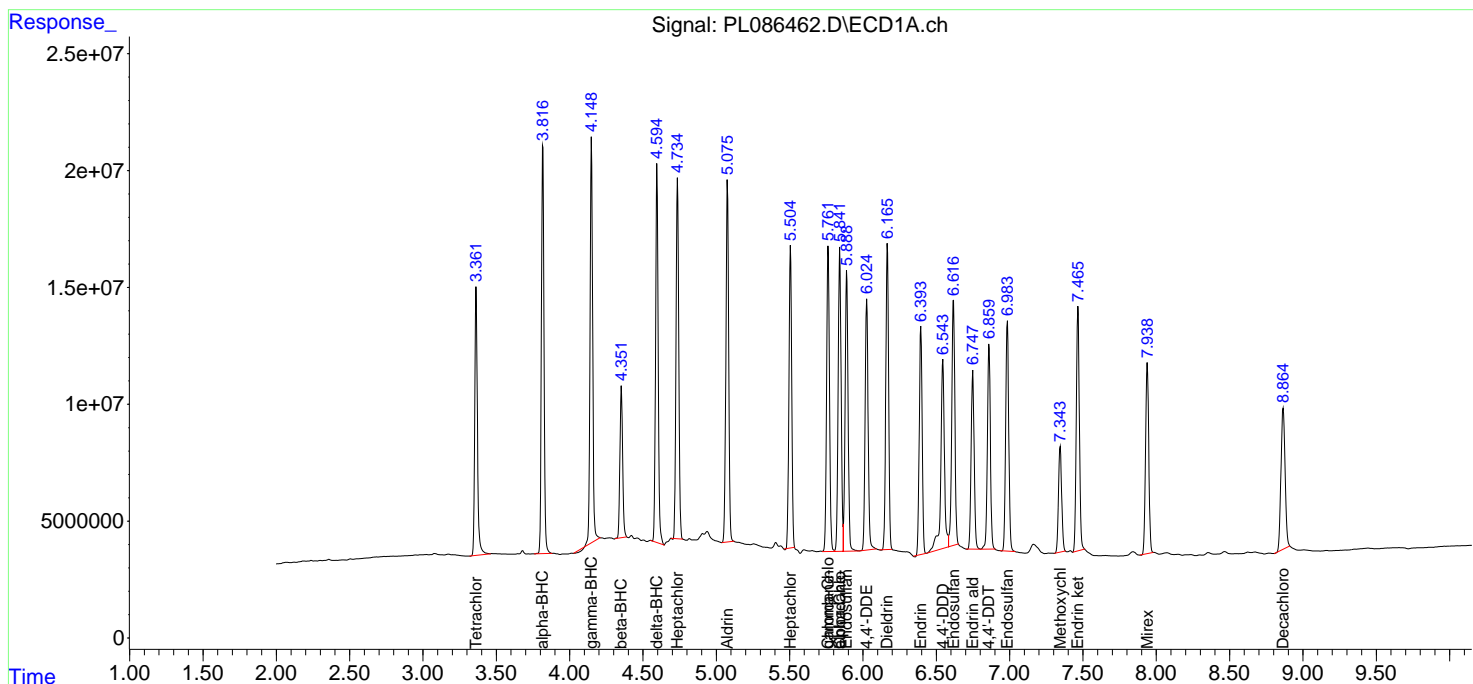
(f)=RT Delta > 1/2 Window (#)=Amounts differ by > 25% (m)=manual int.

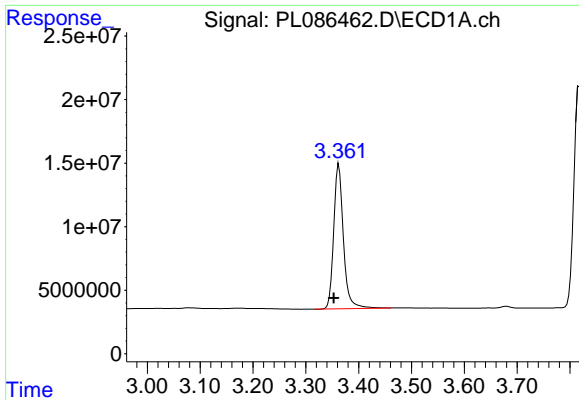
Data Path : Z:\pestpcbsrv\HPCHEM1\ECD_L\Data\PL110623\
 Data File : PL086462.D
 Signal(s) : Signal #1: ECD1A.ch Signal #2: ECD2B.ch
 Acq On : 06 Nov 2023 10:30
 Operator : AR\AJ
 Sample : PSTDCCC050
 Misc :
 ALS Vial : 4 Sample Multiplier: 1

Instrument :
 ECD_L
 ClientSampleId :

Integration File signal 1: autoint1.e
 Integration File signal 2: autoint2.e
 Quant Time: Nov 06 12:50:51 2023
 Quant Method : Z:\pestpcbsrv\HPCHEM1\ECD_L\methods\PL110123.M
 Quant Title : GC Extractables
 QLast Update : Thu Nov 02 05:32:51 2023
 Response via : Initial Calibration
 Integrator: ChemStation

Volume Inj. : 1 µl
 Signal #1 Phase : ZB-MR2 Signal #2 Phase: ZB-MR1
 Signal #1 Info : 30M x 0.32mm x0.2 Signal #2 Info : 30M x 0.32mm x0.5µm

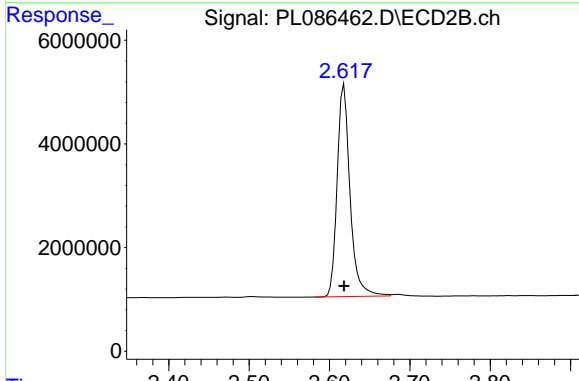




#1 Tetrachloro-m-xylene

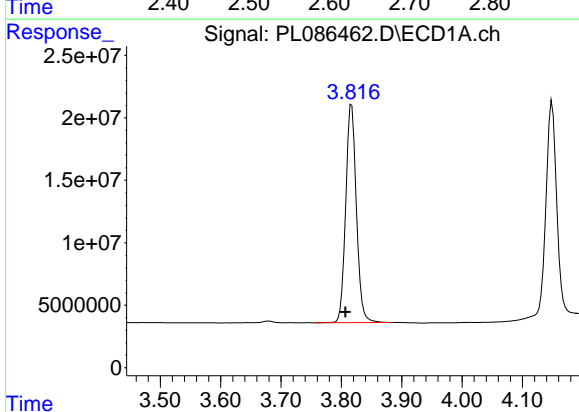
R.T.: 3.362 min
 Delta R.T.: 0.009 min
 Response: 145506111
 Conc: 45.85 ng/ml

Instrument :
 ECD_L
 ClientSampleId :



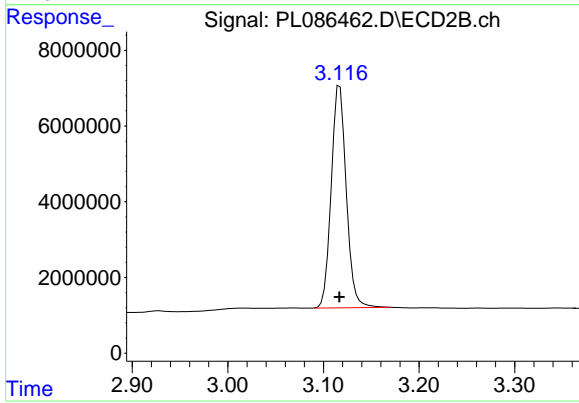
#1 Tetrachloro-m-xylene

R.T.: 2.618 min
 Delta R.T.: 0.000 min
 Response: 45651631
 Conc: 47.95 ng/ml



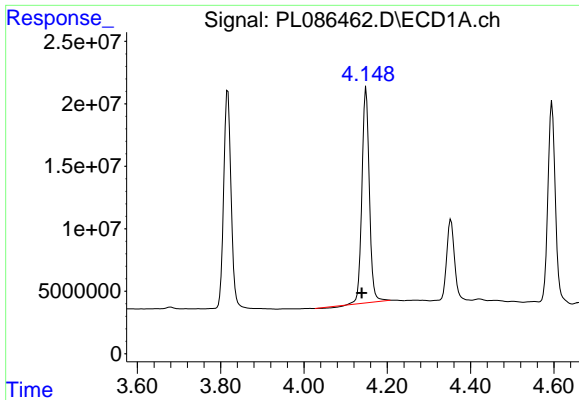
#2 alpha-BHC

R.T.: 3.817 min
 Delta R.T.: 0.010 min
 Response: 214657477
 Conc: 45.48 ng/ml



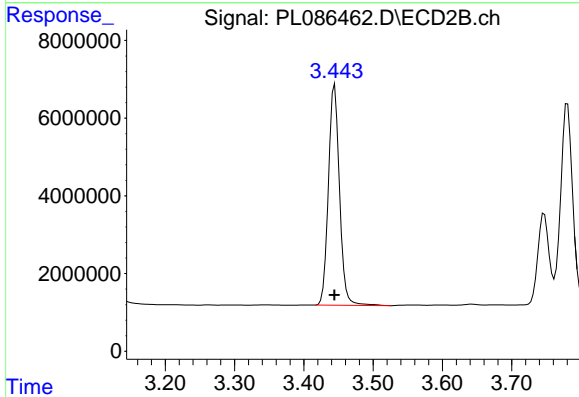
#2 alpha-BHC

R.T.: 3.117 min
 Delta R.T.: 0.000 min
 Response: 63996432
 Conc: 49.31 ng/ml

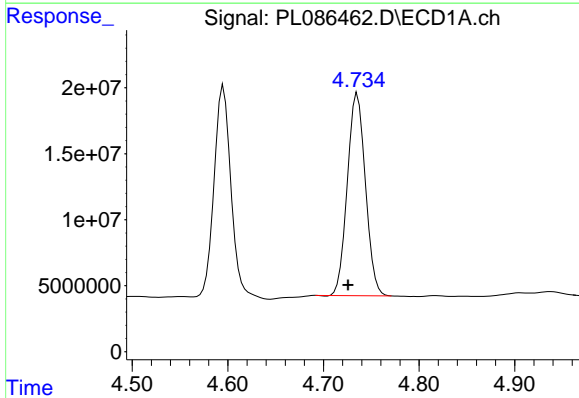


#3 gamma-BHC (Lindane)
 R.T.: 4.149 min
 Delta R.T.: 0.010 min
 Response: 211768894
 Conc: 46.48 ng/ml

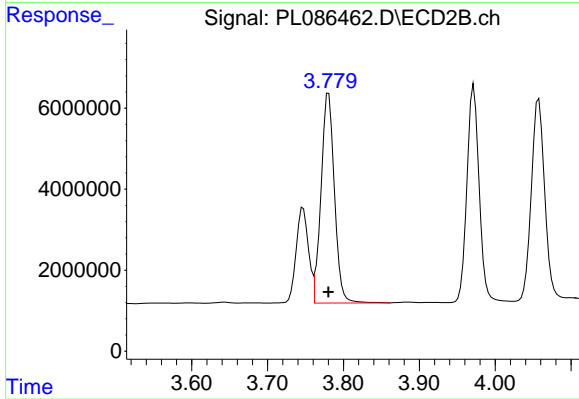
Instrument :
 ECD_L
 ClientSampleId :



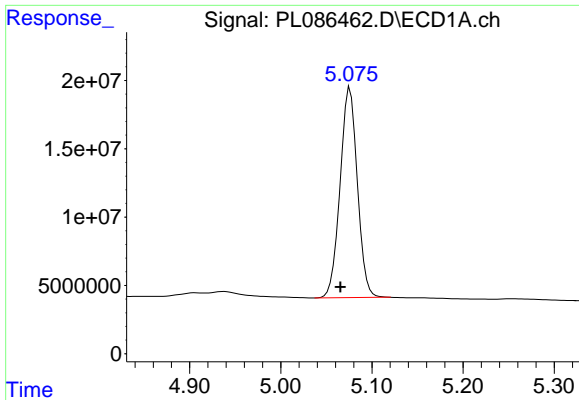
#3 gamma-BHC (Lindane)
 R.T.: 3.445 min
 Delta R.T.: 0.000 min
 Response: 63338266
 Conc: 48.22 ng/ml



#4 Heptachlor
 R.T.: 4.736 min
 Delta R.T.: 0.010 min
 Response: 202374092
 Conc: 46.43 ng/ml

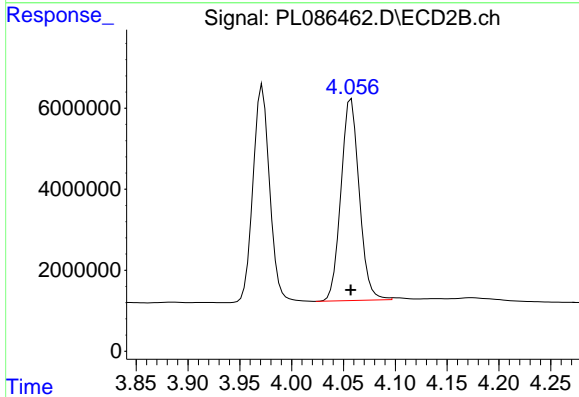


#4 Heptachlor
 R.T.: 3.780 min
 Delta R.T.: 0.000 min
 Response: 63625527
 Conc: 49.05 ng/ml

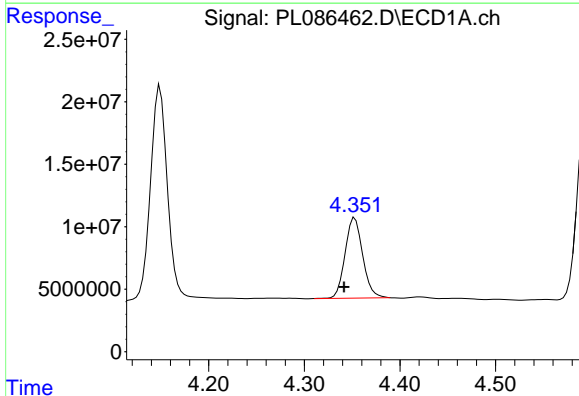


#5 Aldrin
 R.T.: 5.076 min
 Delta R.T.: 0.011 min
 Response: 202379321
 Conc: 45.70 ng/ml

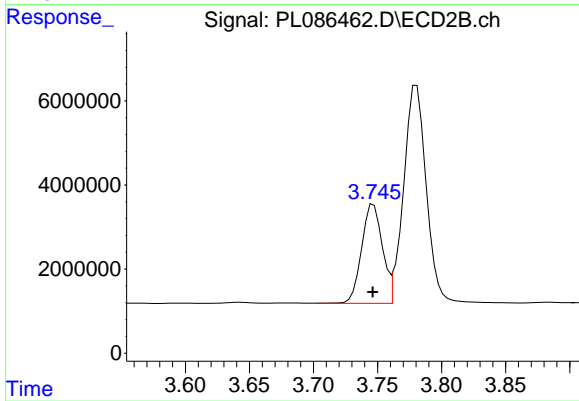
Instrument :
 ECD_L
 ClientSampleId :



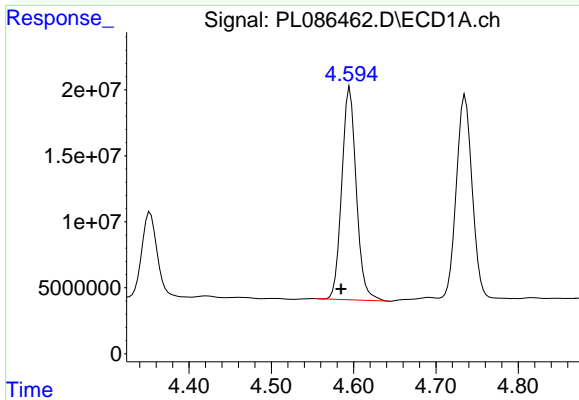
#5 Aldrin
 R.T.: 4.058 min
 Delta R.T.: 0.000 min
 Response: 61138430
 Conc: 47.98 ng/ml



#6 beta-BHC
 R.T.: 4.353 min
 Delta R.T.: 0.011 min
 Response: 82855213
 Conc: 42.01 ng/ml



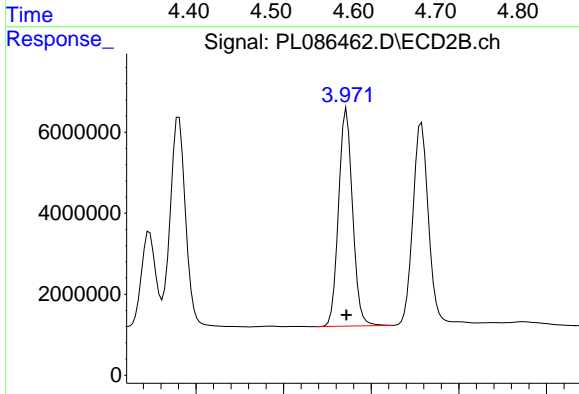
#6 beta-BHC
 R.T.: 3.747 min
 Delta R.T.: 0.000 min
 Response: 26529950
 Conc: 46.23 ng/ml



#7 delta-BHC

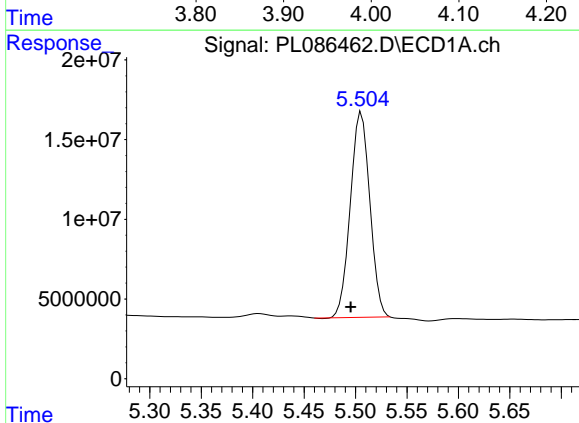
R.T.: 4.595 min
 Delta R.T.: 0.010 min
 Response: 198273703
 Conc: 45.44 ng/ml

Instrument :
 ECD_L
 ClientSampleId :



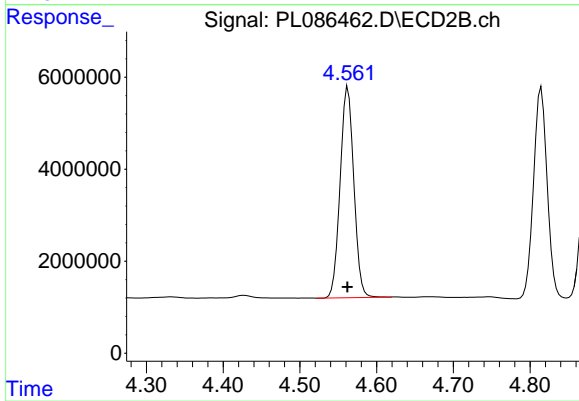
#7 delta-BHC

R.T.: 3.972 min
 Delta R.T.: 0.000 min
 Response: 59682553
 Conc: 47.22 ng/ml



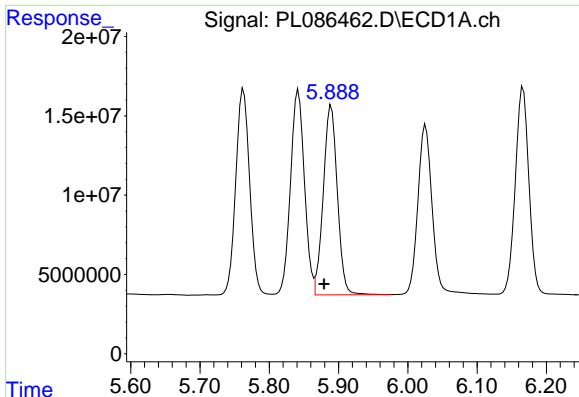
#8 Heptachlor epoxide

R.T.: 5.506 min
 Delta R.T.: 0.010 min
 Response: 170071042
 Conc: 43.97 ng/ml



#8 Heptachlor epoxide

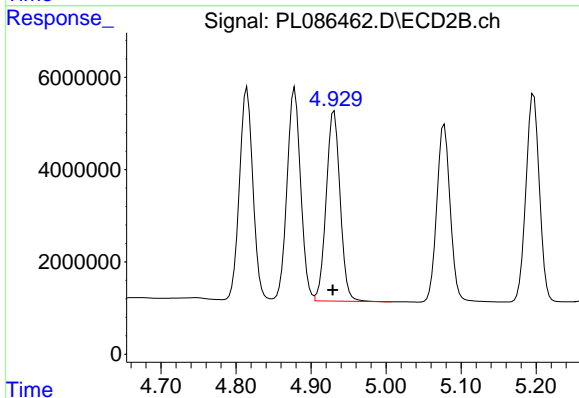
R.T.: 4.563 min
 Delta R.T.: 0.000 min
 Response: 56924940
 Conc: 47.61 ng/ml



#9 Endosulfan I

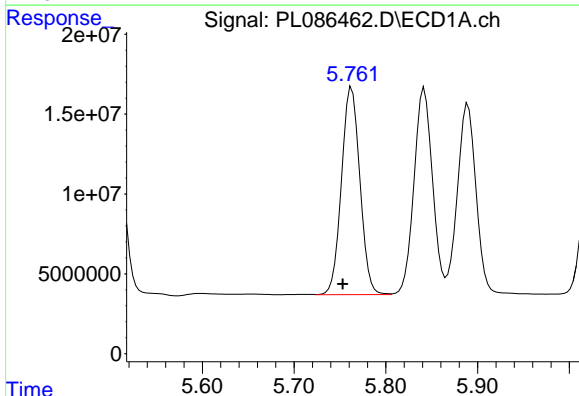
R.T.: 5.889 min
 Delta R.T.: 0.010 min
 Response: 168560552
 Conc: 45.86 ng/ml

Instrument :
 ECD_L
 ClientSampleId :



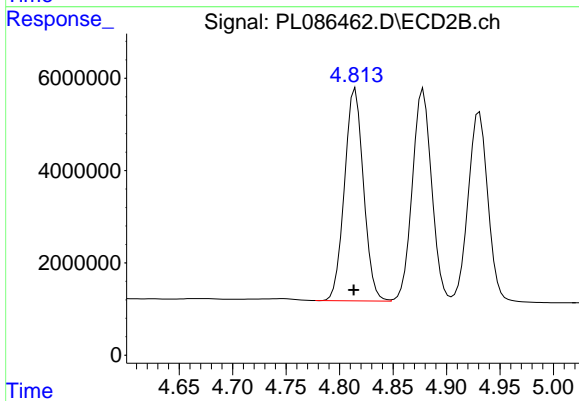
#9 Endosulfan I

R.T.: 4.931 min
 Delta R.T.: 0.002 min
 Response: 53149252
 Conc: 44.78 ng/ml



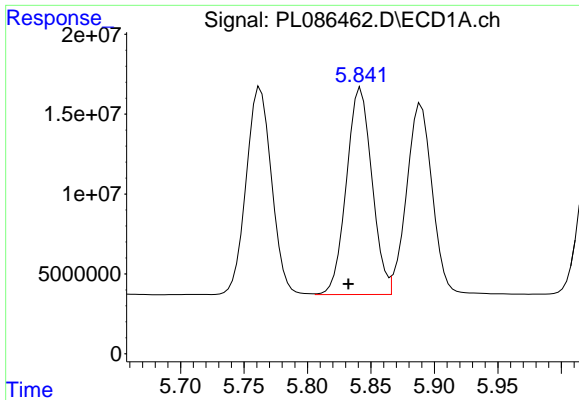
#10 gamma-Chlordane

R.T.: 5.763 min
 Delta R.T.: 0.010 min
 Response: 181036099
 Conc: 45.63 ng/ml



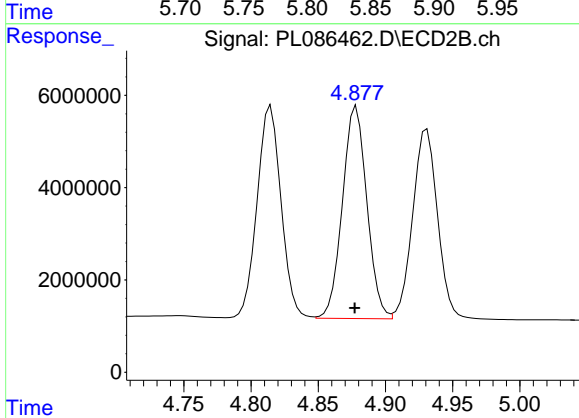
#10 gamma-Chlordane

R.T.: 4.815 min
 Delta R.T.: 0.001 min
 Response: 57022340
 Conc: 48.19 ng/ml

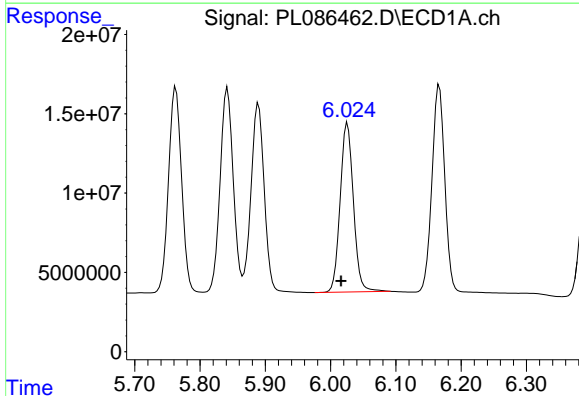


#11 alpha-Chlordane
 R.T.: 5.842 min
 Delta R.T.: 0.010 min
 Response: 180892358
 Conc: 45.44 ng/ml

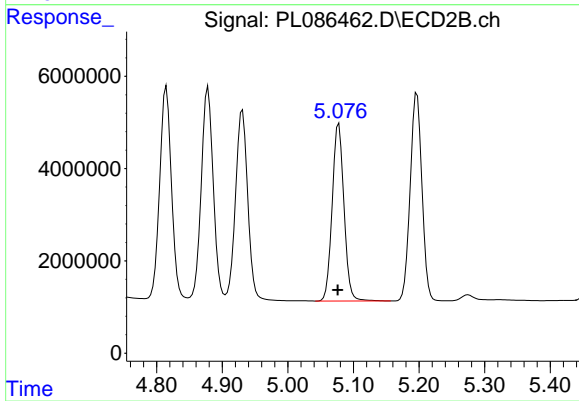
Instrument :
 ECD_L
 ClientSampleId :



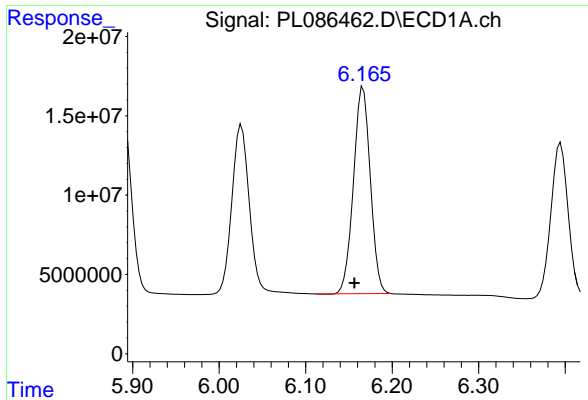
#11 alpha-Chlordane
 R.T.: 4.878 min
 Delta R.T.: 0.001 min
 Response: 58128639
 Conc: 46.53 ng/ml



#12 4,4'-DDE
 R.T.: 6.026 min
 Delta R.T.: 0.010 min
 Response: 150295659
 Conc: 47.36 ng/ml

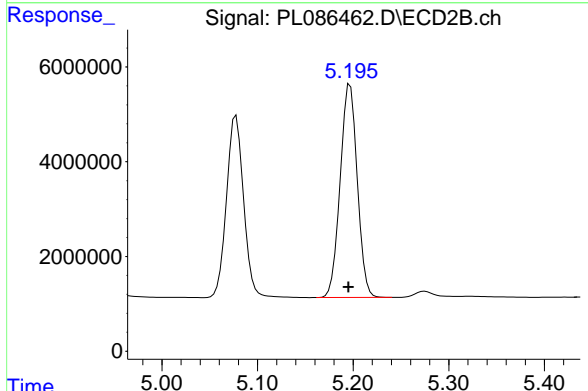


#12 4,4'-DDE
 R.T.: 5.078 min
 Delta R.T.: 0.002 min
 Response: 47999207
 Conc: 48.64 ng/ml

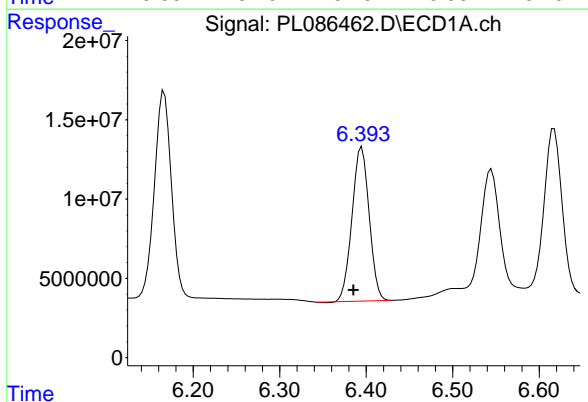


#13 Dieldrin
 R.T.: 6.166 min
 Delta R.T.: 0.010 min
 Response: 176343192
 Conc: 45.86 ng/ml

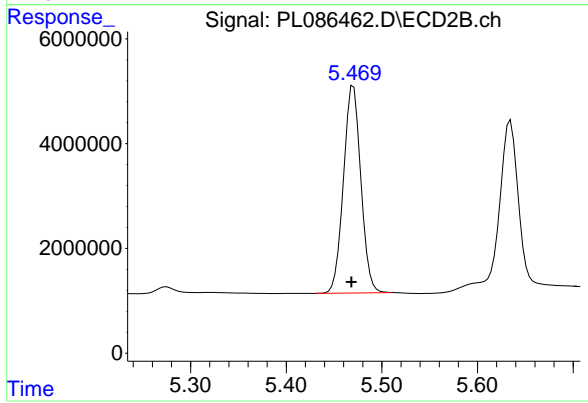
Instrument :
 ECD_L
 ClientSampleId :



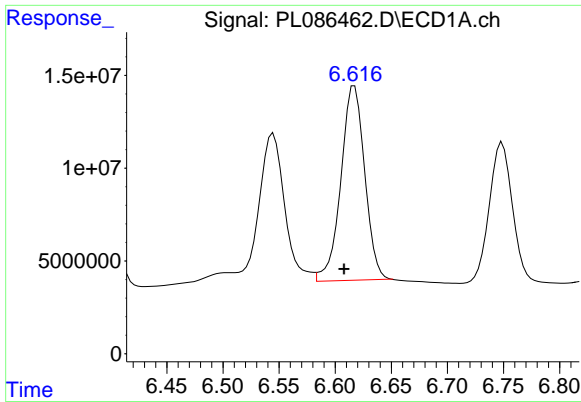
#13 Dieldrin
 R.T.: 5.197 min
 Delta R.T.: 0.002 min
 Response: 56074748
 Conc: 46.96 ng/ml



#14 Endrin
 R.T.: 6.395 min
 Delta R.T.: 0.010 min
 Response: 133588524
 Conc: 40.02 ng/ml



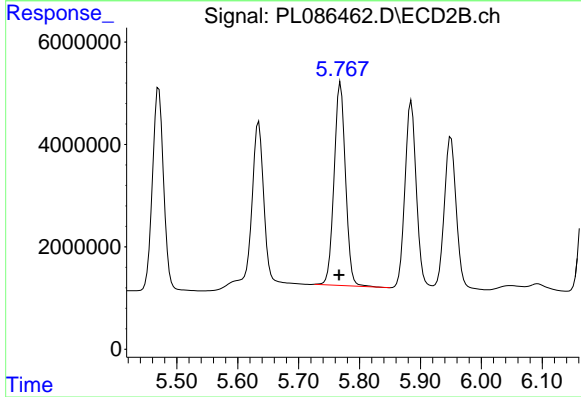
#14 Endrin
 R.T.: 5.470 min
 Delta R.T.: 0.002 min
 Response: 50208528
 Conc: 45.56 ng/ml



#15 Endosulfan II

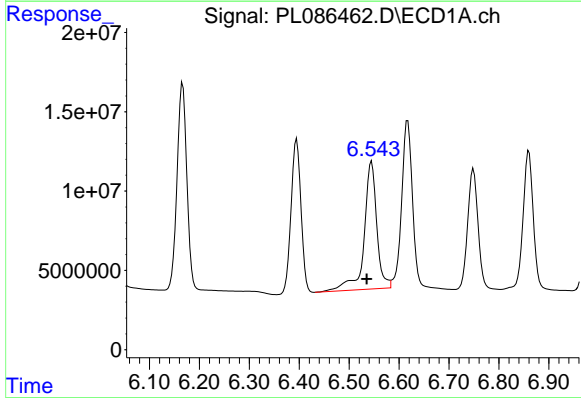
R.T.: 6.617 min
 Delta R.T.: 0.009 min
 Response: 155284740
 Conc: 48.22 ng/ml

Instrument :
 ECD_L
 ClientSampleId :



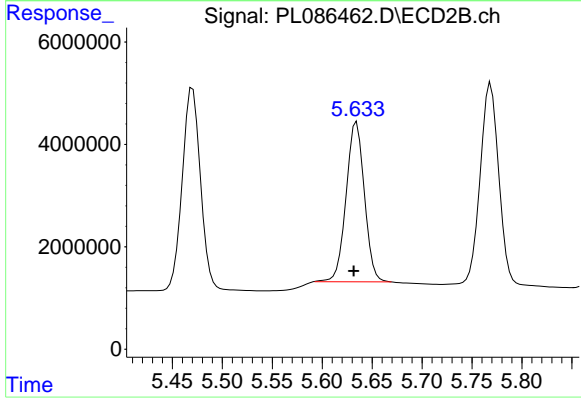
#15 Endosulfan II

R.T.: 5.769 min
 Delta R.T.: 0.002 min
 Response: 51622920
 Conc: 47.89 ng/ml



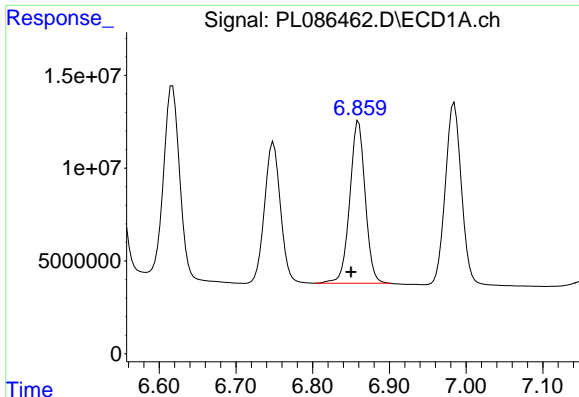
#16 4,4'-DDD

R.T.: 6.545 min
 Delta R.T.: 0.010 min
 Response: 141996676
 Conc: 59.87 ng/ml



#16 4,4'-DDD

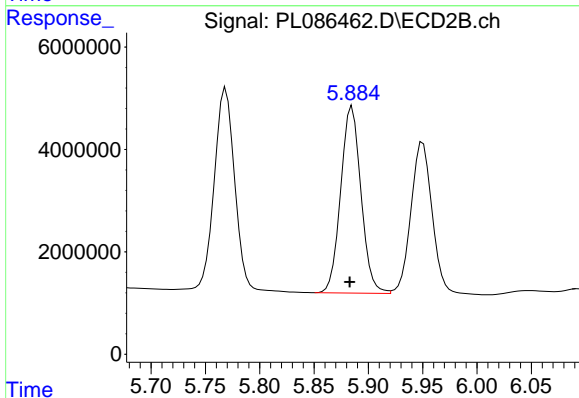
R.T.: 5.634 min
 Delta R.T.: 0.003 min
 Response: 39780326
 Conc: 48.84 ng/ml



#17 4,4'-DDT

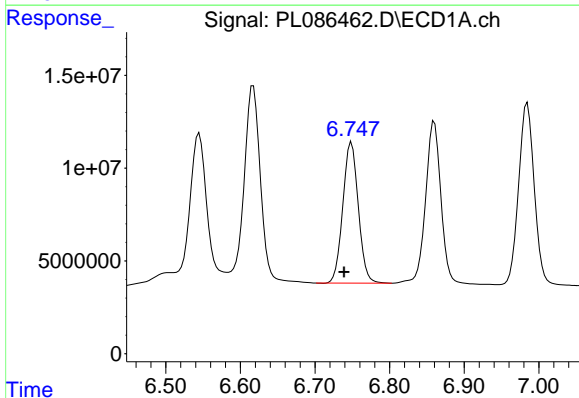
R.T.: 6.860 min
 Delta R.T.: 0.010 min
 Response: 122984286
 Conc: 47.14 ng/ml

Instrument :
 ECD_L
 ClientSampleId :



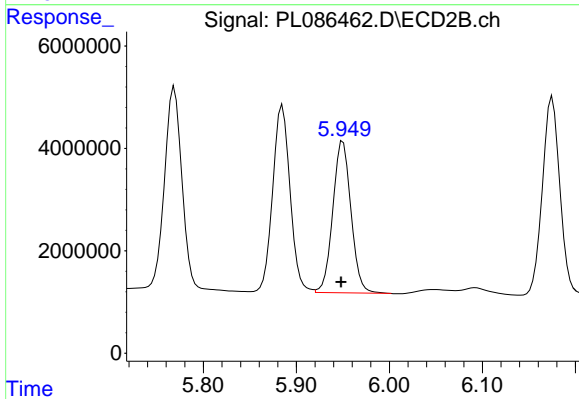
#17 4,4'-DDT

R.T.: 5.885 min
 Delta R.T.: 0.002 min
 Response: 47491547
 Conc: 50.38 ng/ml



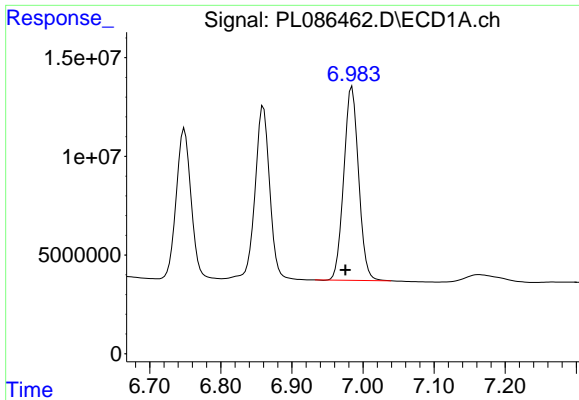
#18 Endrin aldehyde

R.T.: 6.749 min
 Delta R.T.: 0.010 min
 Response: 109388501
 Conc: 44.94 ng/ml



#18 Endrin aldehyde

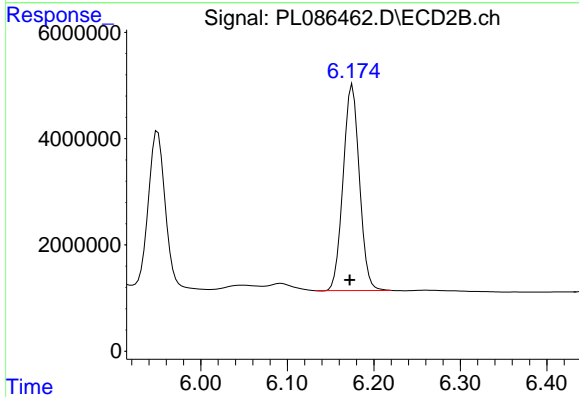
R.T.: 5.950 min
 Delta R.T.: 0.002 min
 Response: 40229118
 Conc: 47.70 ng/ml



#19 Endosulfan Sulfate

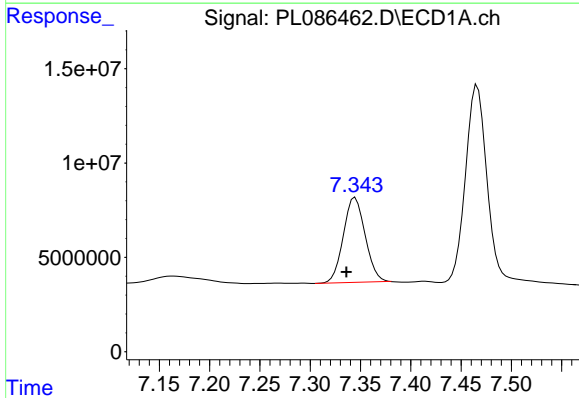
R.T.: 6.985 min
 Delta R.T.: 0.009 min
 Response: 142057750
 Conc: 46.00 ng/ml

Instrument :
 ECD_L
 ClientSampleId :



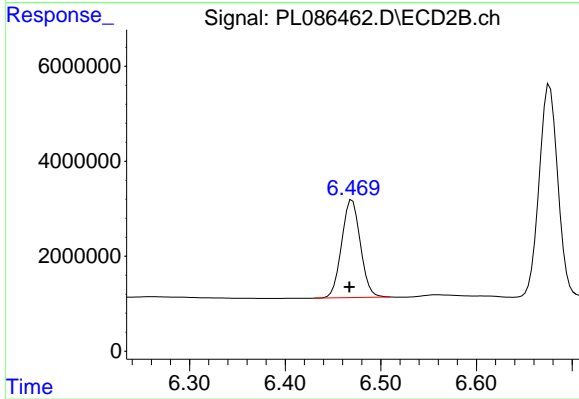
#19 Endosulfan Sulfate

R.T.: 6.175 min
 Delta R.T.: 0.003 min
 Response: 50423427
 Conc: 47.83 ng/ml



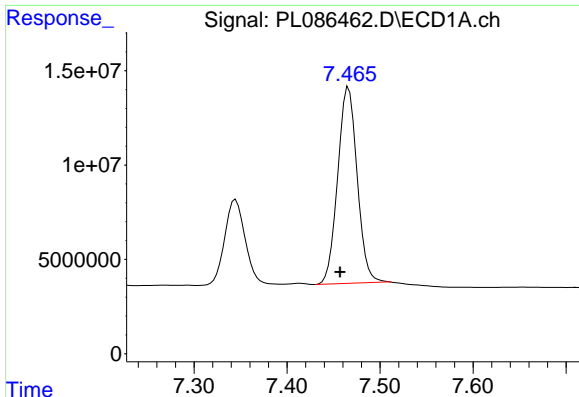
#20 Methoxychlor

R.T.: 7.345 min
 Delta R.T.: 0.009 min
 Response: 67671248
 Conc: 48.79 ng/ml



#20 Methoxychlor

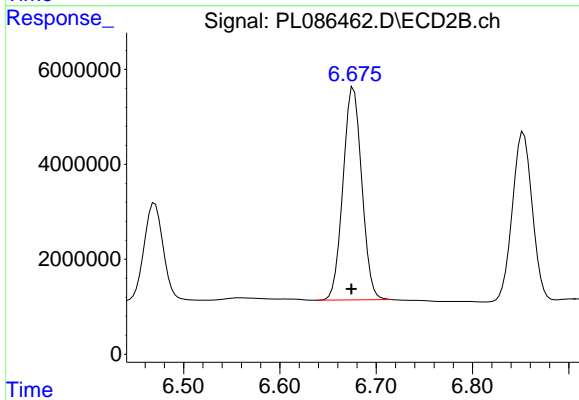
R.T.: 6.470 min
 Delta R.T.: 0.003 min
 Response: 28193284
 Conc: 48.25 ng/ml



#21 Endrin ketone

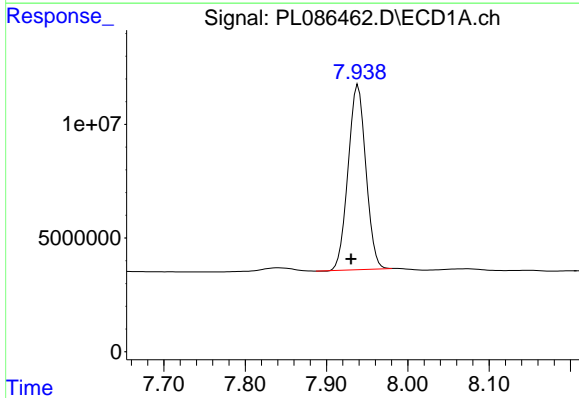
R.T.: 7.466 min
 Delta R.T.: 0.010 min
 Response: 151530788
 Conc: 47.48 ng/ml

Instrument :
 ECD_L
 ClientSampleId :



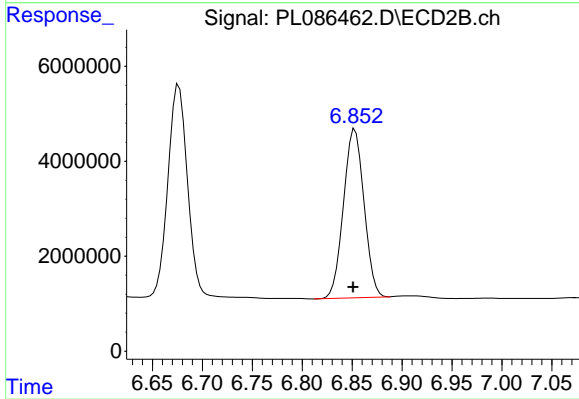
#21 Endrin ketone

R.T.: 6.676 min
 Delta R.T.: 0.002 min
 Response: 60524991
 Conc: 48.53 ng/ml



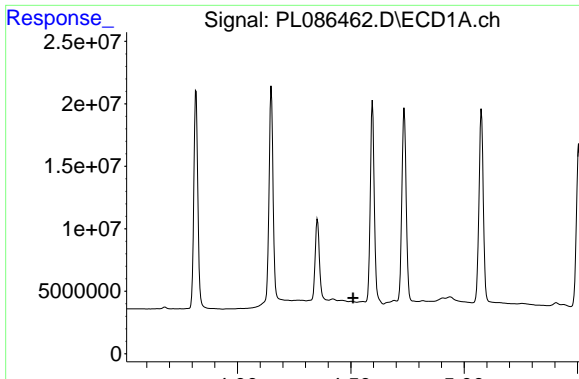
#22 Mirex

R.T.: 7.939 min
 Delta R.T.: 0.009 min
 Response: 123027982
 Conc: 45.09 ng/ml



#22 Mirex

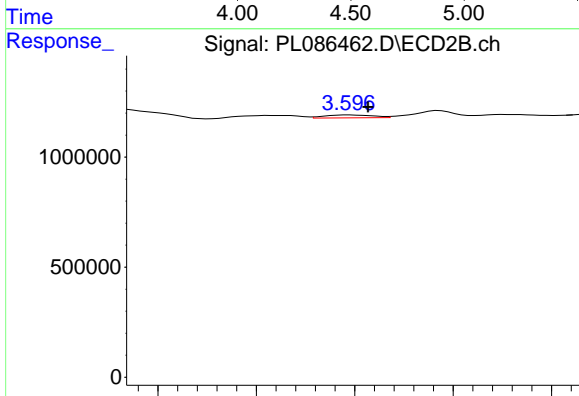
R.T.: 6.853 min
 Delta R.T.: 0.002 min
 Response: 50841975
 Conc: 44.44 ng/ml



#23 Chlordane-1

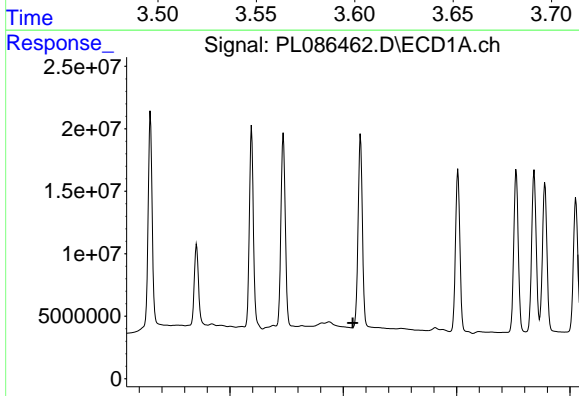
R.T.: 0.000 min
 Exp R.T.: 4.510 min
 Response: 0
 Conc: N.D.

Instrument :
 ECD_L
 ClientSampleId :



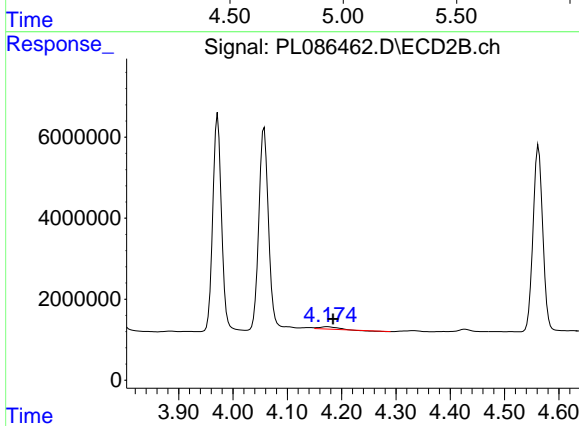
#23 Chlordane-1

R.T.: 3.597 min
 Delta R.T.: -0.010 min
 Response: 229891
 Conc: 6.58 ng/ml



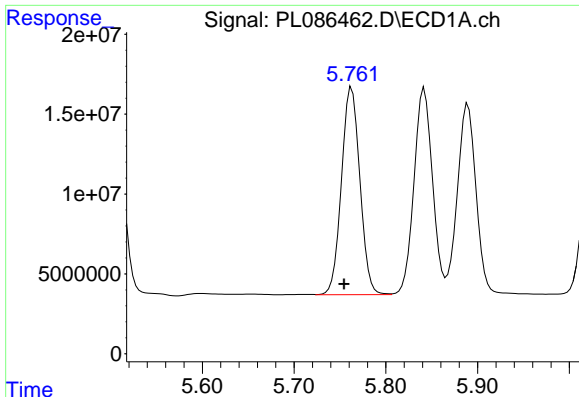
#24 Chlordane-2

R.T.: 0.000 min
 Exp R.T.: 5.042 min
 Response: 0
 Conc: N.D.



#24 Chlordane-2

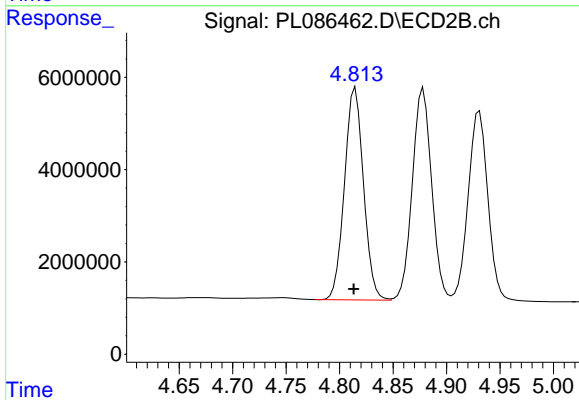
R.T.: 4.174 min
 Delta R.T.: -0.011 min
 Response: 1306568
 Conc: 28.63 ng/ml



#25 Chlordane-3

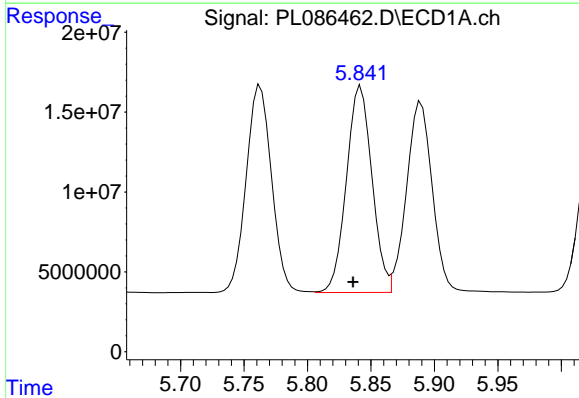
R.T.: 5.763 min
 Delta R.T.: 0.009 min
 Response: 181036099
 Conc: 314.23 ng/ml

Instrument :
 ECD_L
 ClientSampleId :



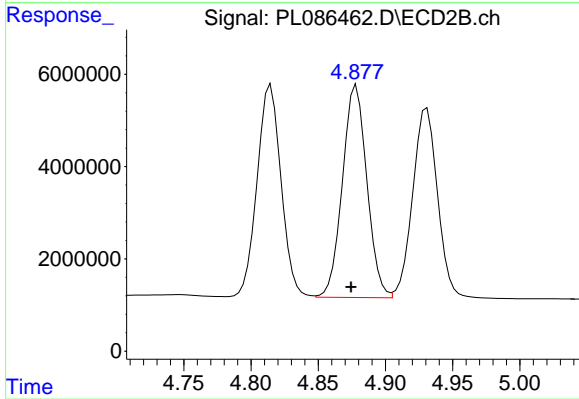
#25 Chlordane-3

R.T.: 4.815 min
 Delta R.T.: 0.002 min
 Response: 57022340
 Conc: 476.71 ng/ml



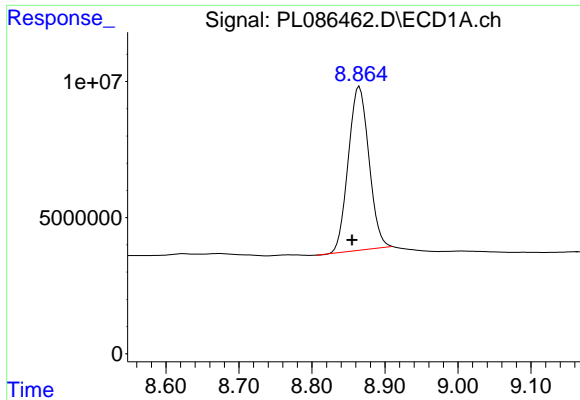
#26 Chlordane-4

R.T.: 5.842 min
 Delta R.T.: 0.006 min
 Response: 180892358
 Conc: 253.55 ng/ml



#26 Chlordane-4

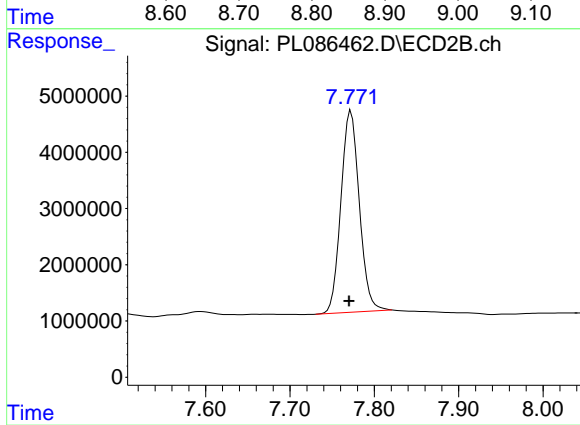
R.T.: 4.878 min
 Delta R.T.: 0.004 min
 Response: 58128639
 Conc: 435.01 ng/ml



#28 Decachlorobiphenyl

R.T.: 8.865 min
Delta R.T.: 0.010 min
Response: 118347494
Conc: 44.75 ng/ml

Instrument :
ECD_L
ClientSampleId :



#28 Decachlorobiphenyl

R.T.: 7.772 min
Delta R.T.: 0.002 min
Response: 54488176
Conc: 47.50 ng/ml