

Data Path : Z:\pestpcbsrv\HPCHEM1\ECD\_L\Data\PL110722\  
 Data File : PL078859.D  
 Signal(s) : Signal #1: ECD1A.ch Signal #2: ECD2B.ch  
 Acq On : 07 Nov 2022 15:31  
 Operator : AR\AJ  
 Sample : N5436-07  
 Misc :  
 ALS Vial : 15 Sample Multiplier: 1

**Instrument :**  
 ECD\_L  
**ClientSampleId :**  
 250FERRYBLVD-TFS-07

**Manual Integrations**  
**APPROVED**

Reviewed By :Abdul Mirza 11/10/2022  
 Supervised By :Ankita Jodhani 11/10/2022

Integration File signal 1: autoint1.e  
 Integration File signal 2: autoint2.e  
 Quant Time: Nov 09 17:27:38 2022  
 Quant Method : Z:\pestpcbsrv\HPCHEM1\ECD\_L\methods\PL102122.M  
 Quant Title : GC Extractables  
 QLast Update : Fri Oct 21 07:08:41 2022  
 Response via : Initial Calibration  
 Integrator: ChemStation

Volume Inj. : 1 µl  
 Signal #1 Phase : ZB-MR2 Signal #2 Phase: ZB-MR1  
 Signal #1 Info : 30M x 0.32mm x0.2 Signal #2 Info : 30M x 0.32mm x0.5µm

Compound	RT#1	RT#2	Resp#1	Resp#2	ng/ml	ng/ml
-----						
System Monitoring Compounds						
1) SA Tetrachlo...	3.324	2.570	38798057	24784599	20.345	9.707 #
28) SA Decachlor...	8.775	7.639	451.3E6	549.4E6	300.011	290.054
Target Compounds						
13) MA Dieldrin	6.119	5.107	190.2E6	70327593	88.184	23.735m#
-----						

(f)=RT Delta > 1/2 Window (#)=Amounts differ by > 25% (m)=manual int.

Data Path : Z:\pestpcbsrv\HPCHEM1\ECD\_L\Data\PL110722\  
 Data File : PL078859.D  
 Signal(s) : Signal #1: ECD1A.ch Signal #2: ECD2B.ch  
 Acq On : 07 Nov 2022 15:31  
 Operator : AR\AJ  
 Sample : N5436-07  
 Misc :  
 ALS Vial : 15 Sample Multiplier: 1

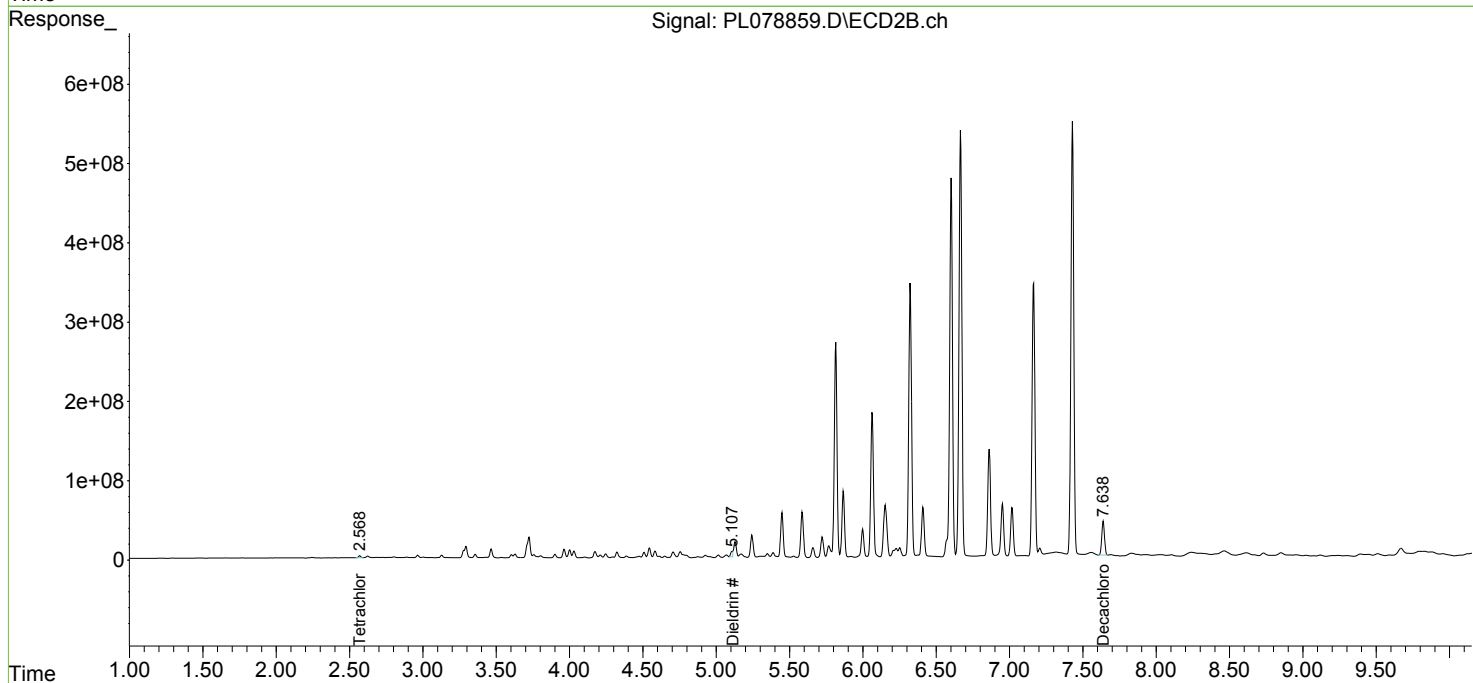
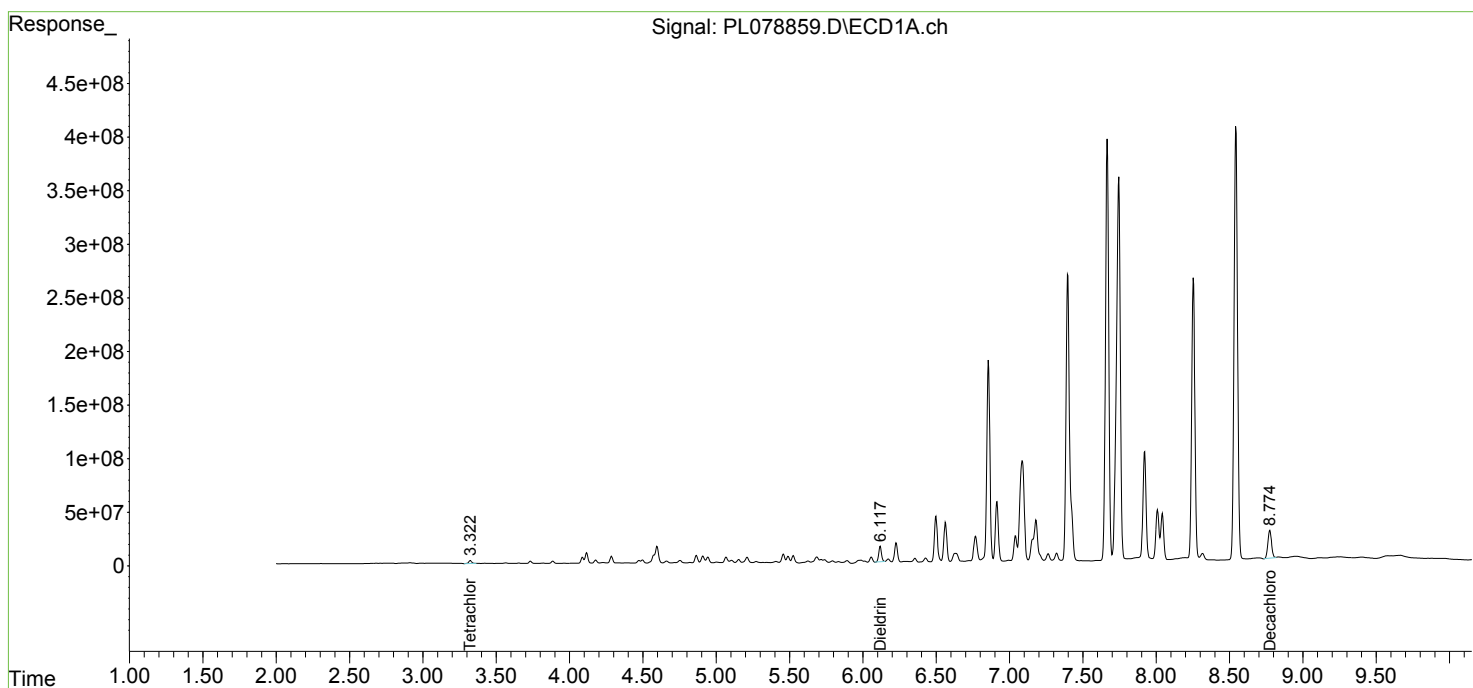
**Instrument :**  
 ECD\_L  
**ClientSampleId :**  
 250FERRYBLVD-TFS-07

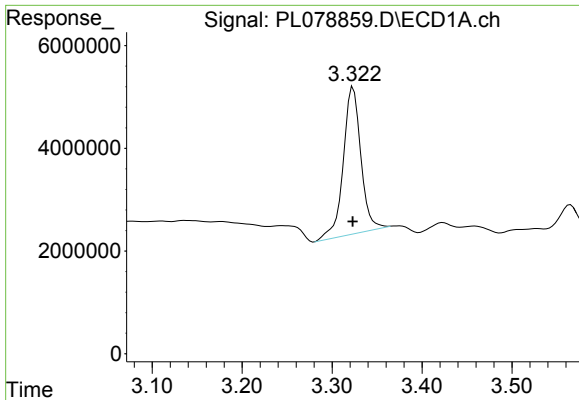
**Manual Integrations**  
**APPROVED**

Reviewed By :Abdul Mirza 11/10/2022  
 Supervised By :Ankita Jodhani 11/10/2022

Integration File signal 1: autoint1.e  
 Integration File signal 2: autoint2.e  
 Quant Time: Nov 09 17:27:38 2022  
 Quant Method : Z:\pestpcbsrv\HPCHEM1\ECD\_L\methods\PL102122.M  
 Quant Title : GC Extractables  
 QLast Update : Fri Oct 21 07:08:41 2022  
 Response via : Initial Calibration  
 Integrator: ChemStation

Volume Inj. : 1 µl  
 Signal #1 Phase : ZB-MR2 Signal #2 Phase: ZB-MR1  
 Signal #1 Info : 30M x 0.32mm x0.2 Signal #2 Info : 30M x 0.32mm x0.5µm





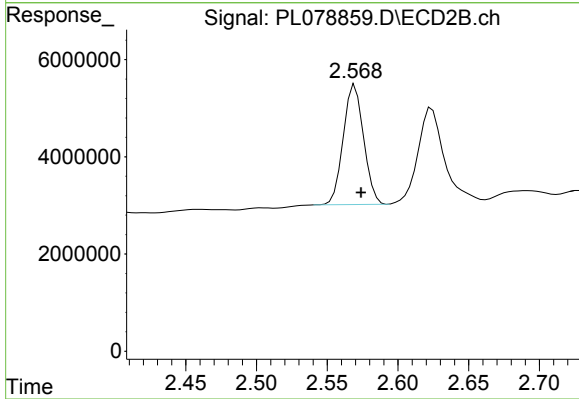
#1 Tetrachloro-m-xylene

R.T.: 3.324 min  
 Delta R.T.: 0.000 min  
 Response: 38798057  
 Conc: 20.34 ng/ml

Instrument : ECD\_L  
 ClientSampleId : 250FERRYBLVD-TFS-07

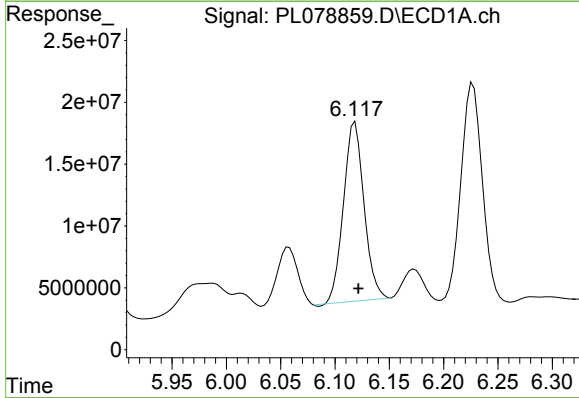
Manual Integrations  
 APPROVED

Reviewed By :Abdul Mirza 11/10/2022  
 Supervised By :Ankita Jodhani 11/10/2022



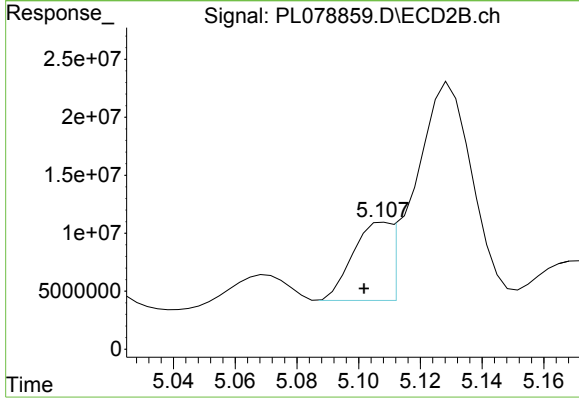
#1 Tetrachloro-m-xylene

R.T.: 2.570 min  
 Delta R.T.: -0.004 min  
 Response: 24784599  
 Conc: 9.71 ng/ml



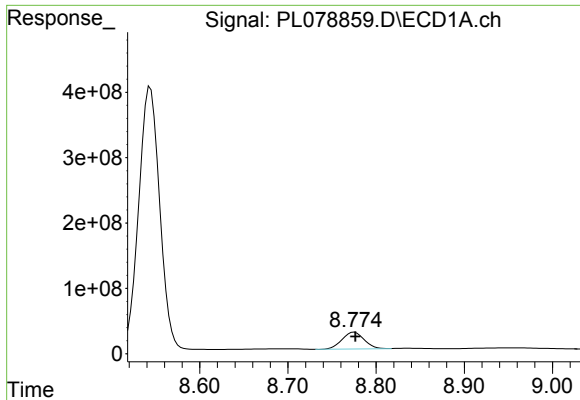
#13 Dieldrin

R.T.: 6.119 min  
 Delta R.T.: -0.003 min  
 Response: 190169436  
 Conc: 88.18 ng/ml



#13 Dieldrin

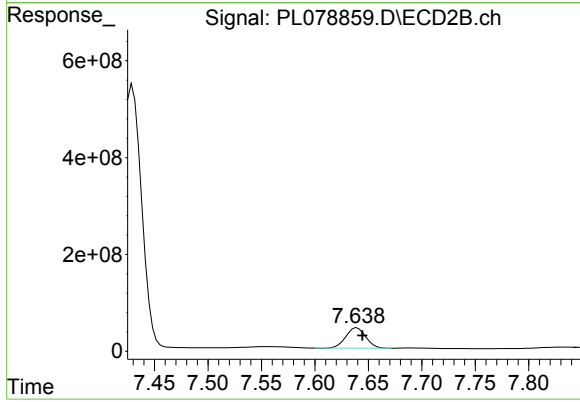
R.T.: 5.107 min  
 Delta R.T.: 0.005 min  
 Response: 70327593  
 Conc: 23.73 ng/ml m



#28 Decachlorobiphenyl  
 R.T.: 8.775 min  
 Delta R.T.: -0.001 min  
 Response: 451323714  
 Conc: 300.01 ng/ml

Instrument :  
 ECD\_L  
 ClientSampleId :  
 250FERRYBLVD-TFS-07

Manual Integrations  
**APPROVED**  
 Reviewed By :Abdul Mirza 11/10/2022  
 Supervised By :Ankita Jodhani 11/10/2022



#28 Decachlorobiphenyl  
 R.T.: 7.639 min  
 Delta R.T.: -0.005 min  
 Response: 549393200  
 Conc: 290.05 ng/ml