

Data Path : Z:\pestpcbsrv\HPCHEM1\ECD\_L\Data\PL110724\  
 Data File : PL092887.D  
 Signal(s) : Signal #1: ECD1A.ch Signal #2: ECD2B.ch  
 Acq On : 07 Nov 2024 11:08  
 Operator : AR\AJ  
 Sample : PEM  
 Misc :  
 ALS Vial : 3 Sample Multiplier: 1

**Instrument :**  
 ECD\_L  
**ClientSampleId :**  
 PEM

**Manual Integrations**  
**APPROVED**  
 Reviewed By :Abdul Mirza 11/08/2024  
 Supervised By :Ankita Jodhani 11/08/2024

Integration File signal 1: autoint1.e  
 Integration File signal 2: autoint2.e  
 Quant Time: Nov 07 11:45:34 2024  
 Quant Method : Z:\pestpcbsrv\HPCHEM1\ECD\_L\methods\PL102824.M  
 Quant Title : GC Extractables  
 QLast Update : Mon Oct 28 18:58:23 2024  
 Response via : Initial Calibration  
 Integrator: ChemStation

Volume Inj. : 1 µl  
 Signal #1 Phase : ZB-MR2 Signal #2 Phase: ZB-MR1  
 Signal #1 Info : 30M x 0.32mm x0.2 Signal #2 Info : 30M x 0.32mm x0.5µm

Compound	RT#1	RT#2	Resp#1	Resp#2	ng/ml	ng/ml
-----						
System Monitoring Compounds						
1) SA Tetrachlo...	3.542	2.778	54532941	59032672	22.256	21.694
28) SA Decachlor...	9.057	7.917	41783907	56762202	21.711	20.798
Target Compounds						
2) A alpha-BHC	3.997	3.280	39334519	41158533	11.598	10.315
3) MA gamma-BHC...	4.330	3.610	36968912	38655126	11.342	10.016
6) B beta-BHC	4.528	3.910	17310933	19076360	11.976	11.588
14) MA Endrin	6.577	5.642	104.2E6	153.0E6	45.788	52.893
16) A 4,4'-DDD	6.712	5.789	2529946	2743543	1.318	1.102m
17) MA 4,4'-DDT	7.027	6.040	201.1E6	307.9E6	97.141	114.780
18) B Endrin al...	6.926	6.116	2750556	3457354	1.465	1.498
20) A Methoxychlor	7.502	6.616	255.7E6	363.4E6	224.255	254.449
21) B Endrin ke...	7.645	6.842	5780188	6798880	2.386	2.215m
-----						

(f)=RT Delta > 1/2 Window (#)=Amounts differ by > 25% (m)=manual int.

Data Path : Z:\pestpcbsrv\HPCHEM1\ECD\_L\Data\PL110724\  
 Data File : PL092887.D  
 Signal(s) : Signal #1: ECD1A.ch Signal #2: ECD2B.ch  
 Acq On : 07 Nov 2024 11:08  
 Operator : AR\AJ  
 Sample : PEM  
 Misc :  
 ALS Vial : 3 Sample Multiplier: 1

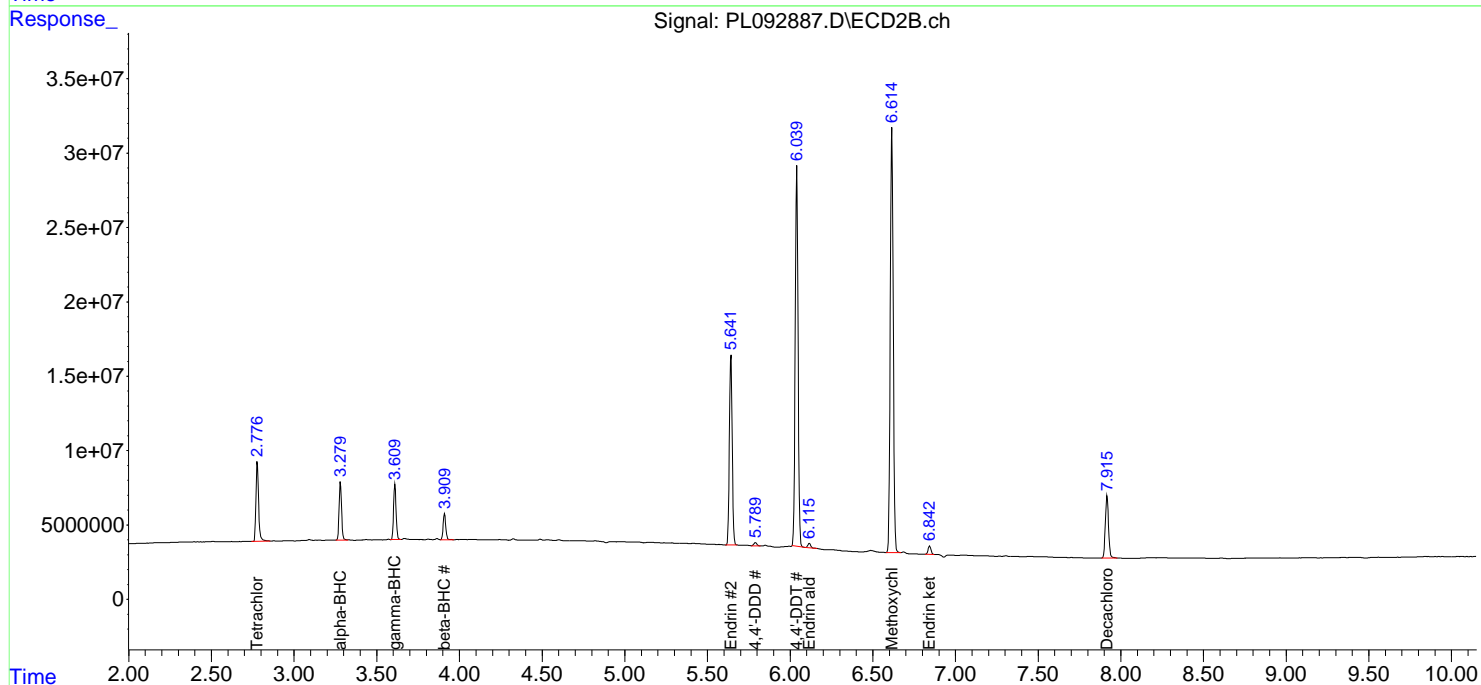
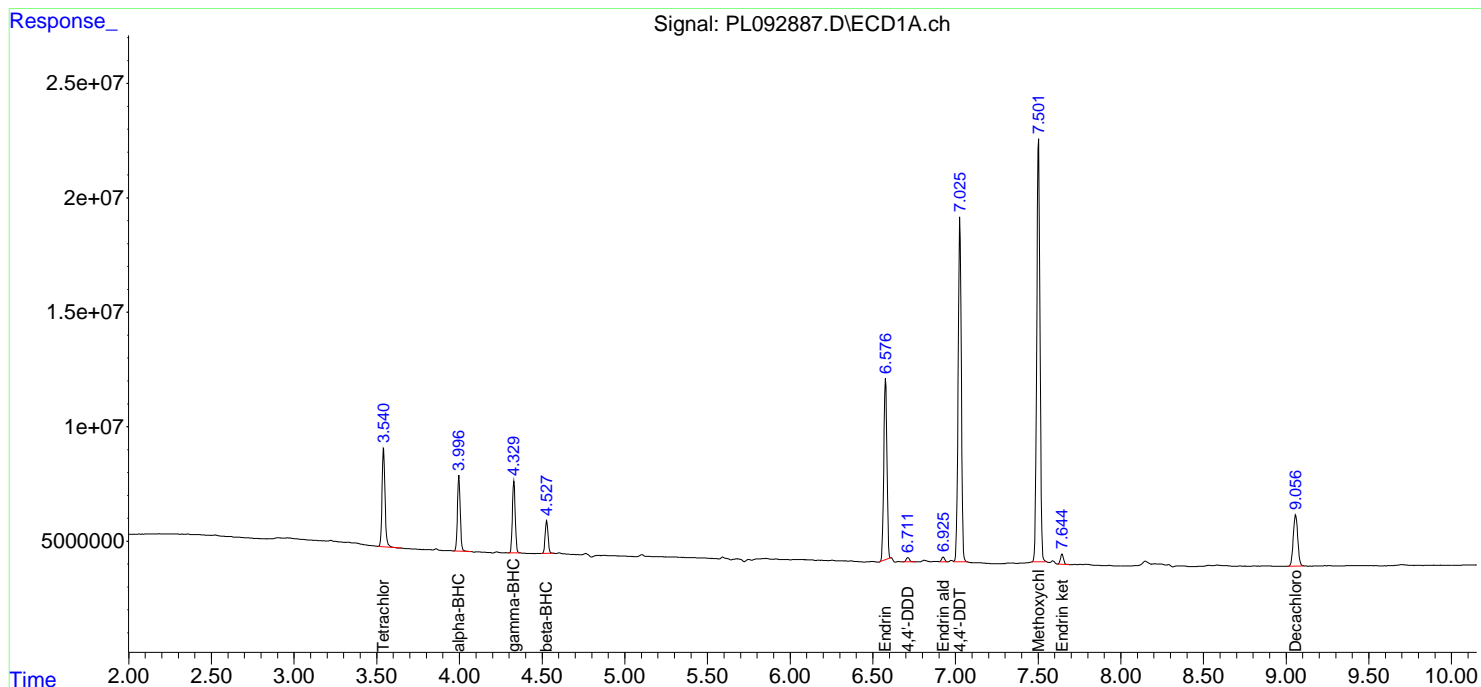
**Instrument :**  
 ECD\_L  
**ClientSampleId :**  
 PEM

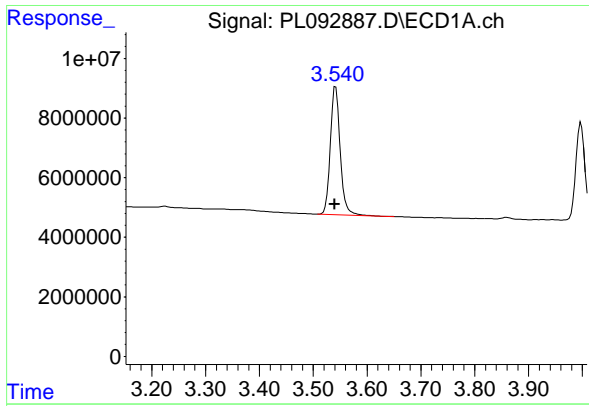
**Manual Integrations**  
**APPROVED**

Reviewed By :Abdul Mirza 11/08/2024  
 Supervised By :Ankita Jodhani 11/08/2024

Integration File signal 1: autoint1.e  
 Integration File signal 2: autoint2.e  
 Quant Time: Nov 07 11:45:34 2024  
 Quant Method : Z:\pestpcbsrv\HPCHEM1\ECD\_L\methods\PL102824.M  
 Quant Title : GC Extractables  
 QLast Update : Mon Oct 28 18:58:23 2024  
 Response via : Initial Calibration  
 Integrator: ChemStation

Volume Inj. : 1 µl  
 Signal #1 Phase : ZB-MR2 Signal #2 Phase: ZB-MR1  
 Signal #1 Info : 30M x 0.32mm x0.2 Signal #2 Info : 30M x 0.32mm x0.5µm





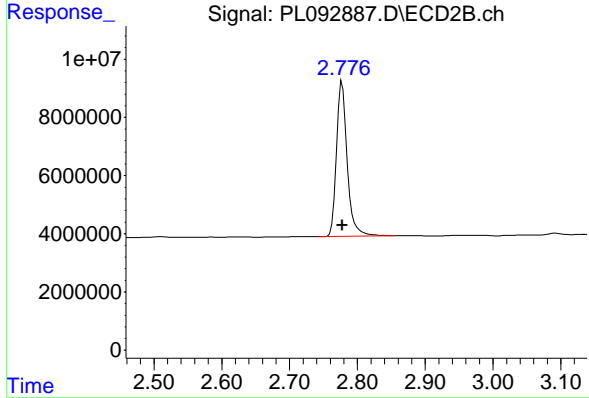
#1 Tetrachloro-m-xylene

R.T.: 3.542 min  
 Delta R.T.: 0.002 min  
 Response: 54532941  
 Conc: 22.26 ng/ml

Instrument : ECD\_L  
 ClientSampleId : PEM

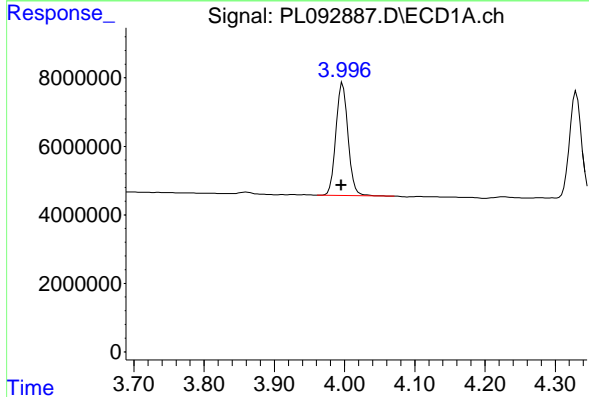
Manual Integrations  
 APPROVED

Reviewed By :Abdul Mirza 11/08/2024  
 Supervised By :Ankita Jodhani 11/08/2024



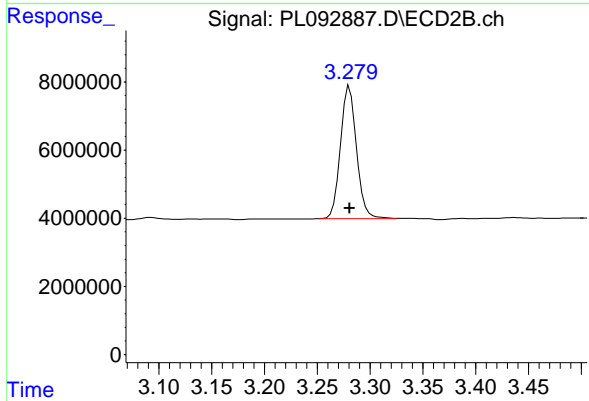
#1 Tetrachloro-m-xylene

R.T.: 2.778 min  
 Delta R.T.: 0.000 min  
 Response: 59032672  
 Conc: 21.69 ng/ml



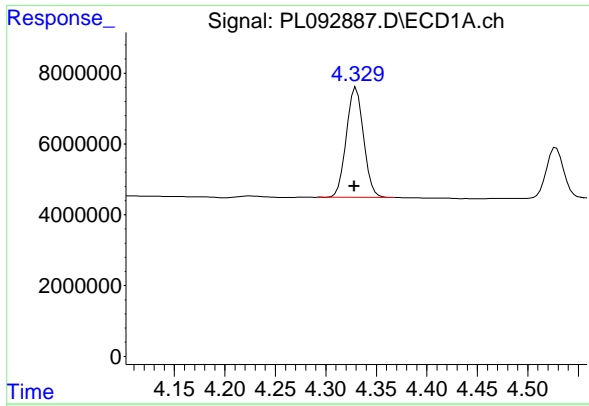
#2 alpha-BHC

R.T.: 3.997 min  
 Delta R.T.: 0.002 min  
 Response: 39334519  
 Conc: 11.60 ng/ml



#2 alpha-BHC

R.T.: 3.280 min  
 Delta R.T.: 0.000 min  
 Response: 41158533  
 Conc: 10.31 ng/ml



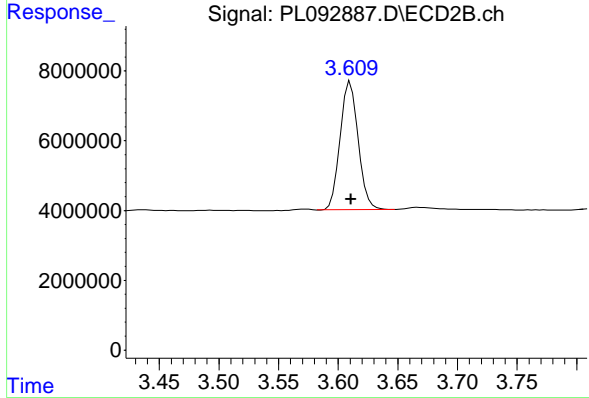
#3 gamma-BHC (Lindane)

R.T.: 4.330 min  
 Delta R.T.: 0.002 min  
 Response: 36968912  
 Conc: 11.34 ng/ml

Instrument :  
 ECD\_L  
 ClientSampleId :  
 PEM

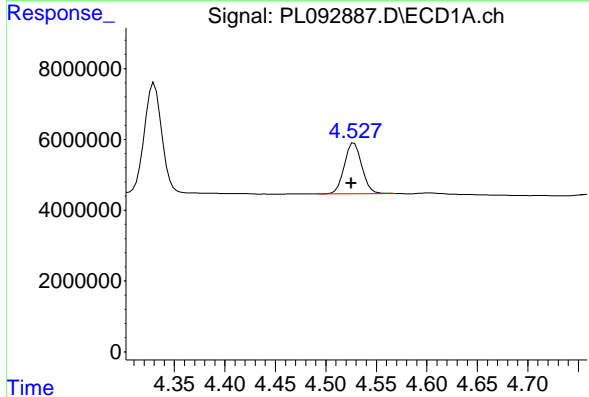
Manual Integrations  
 APPROVED

Reviewed By :Abdul Mirza 11/08/2024  
 Supervised By :Ankita Jodhani 11/08/2024



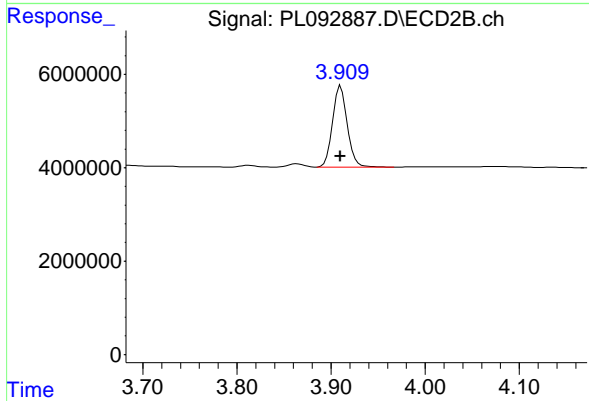
#3 gamma-BHC (Lindane)

R.T.: 3.610 min  
 Delta R.T.: 0.000 min  
 Response: 38655126  
 Conc: 10.02 ng/ml



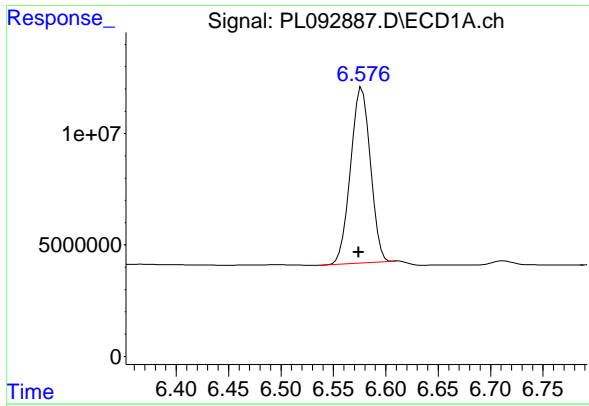
#6 beta-BHC

R.T.: 4.528 min  
 Delta R.T.: 0.003 min  
 Response: 17310933  
 Conc: 11.98 ng/ml



#6 beta-BHC

R.T.: 3.910 min  
 Delta R.T.: 0.000 min  
 Response: 19076360  
 Conc: 11.59 ng/ml



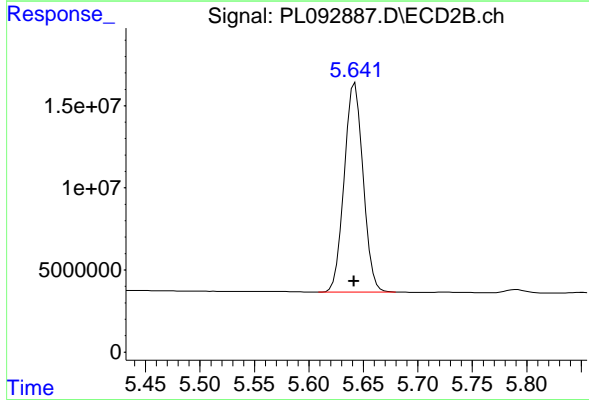
#14 Endrin

R.T.: 6.577 min  
 Delta R.T.: 0.003 min  
 Response: 104242638  
 Conc: 45.79 ng/ml

Instrument :  
 ECD\_L  
 ClientSampleId :  
 PEM

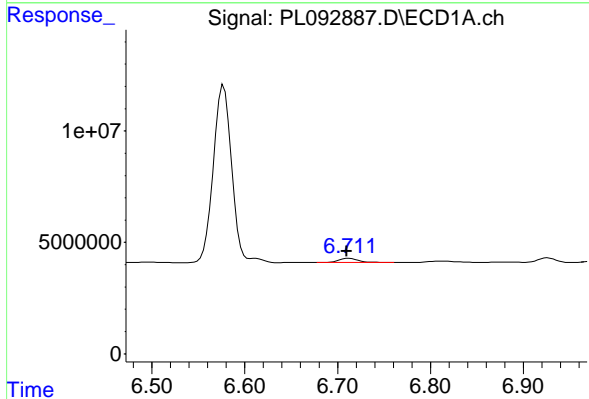
Manual Integrations  
 APPROVED

Reviewed By :Abdul Mirza 11/08/2024  
 Supervised By :Ankita Jodhani 11/08/2024



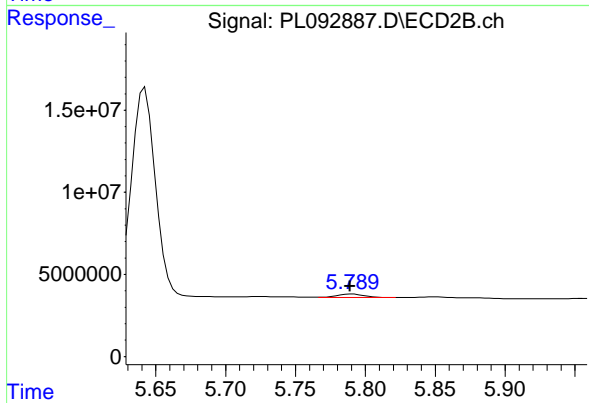
#14 Endrin

R.T.: 5.642 min  
 Delta R.T.: 0.000 min  
 Response: 153018460  
 Conc: 52.89 ng/ml



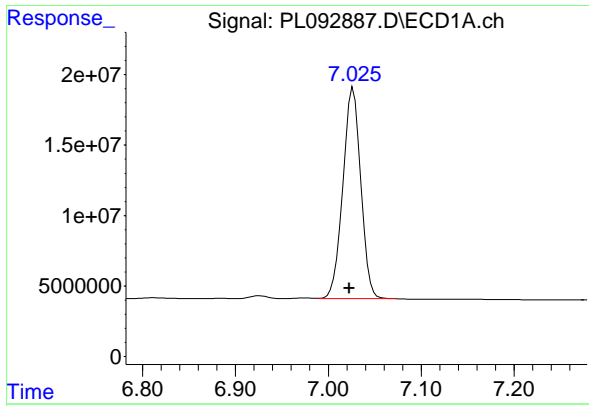
#16 4,4'-DDD

R.T.: 6.712 min  
 Delta R.T.: 0.003 min  
 Response: 2529946  
 Conc: 1.32 ng/ml



#16 4,4'-DDD

R.T.: 5.789 min  
 Delta R.T.: 0.000 min  
 Response: 2743543  
 Conc: 1.10 ng/ml m



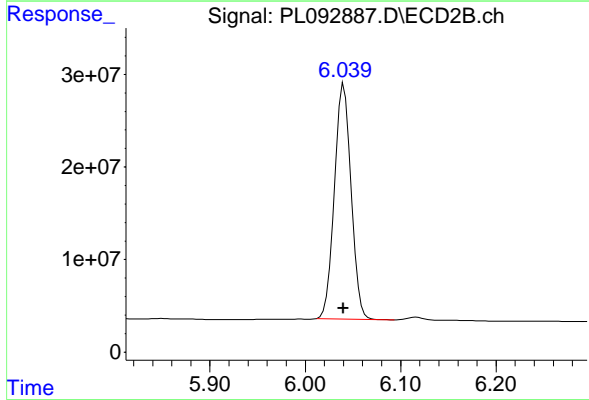
#17 4,4' -DDT

R.T.: 7.027 min  
 Delta R.T.: 0.004 min  
 Response: 201057129  
 Conc: 97.14 ng/ml

Instrument :  
 ECD\_L  
 ClientSampleId :  
 PEM

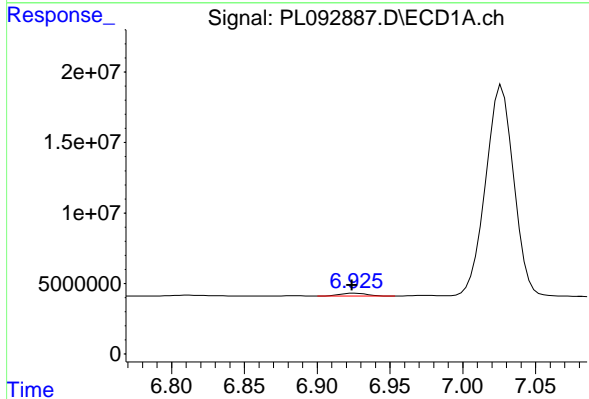
Manual Integrations  
 APPROVED

Reviewed By :Abdul Mirza 11/08/2024  
 Supervised By :Ankita Jodhani 11/08/2024



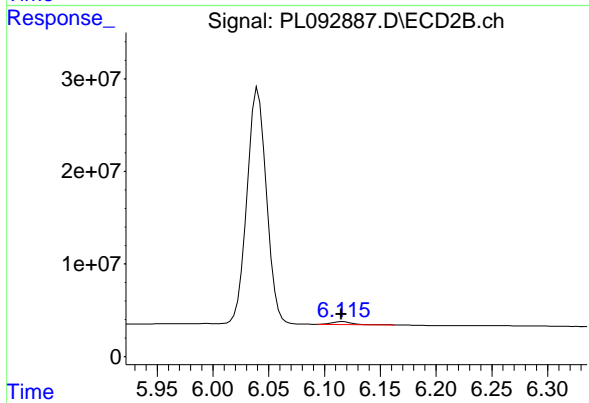
#17 4,4' -DDT

R.T.: 6.040 min  
 Delta R.T.: 0.000 min  
 Response: 307870009  
 Conc: 114.78 ng/ml



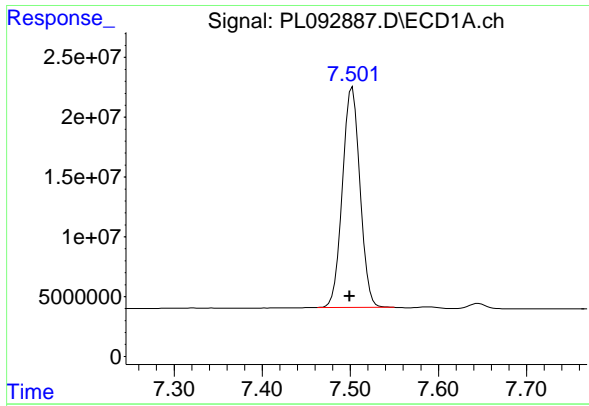
#18 Endrin aldehyde

R.T.: 6.926 min  
 Delta R.T.: 0.002 min  
 Response: 2750556  
 Conc: 1.46 ng/ml



#18 Endrin aldehyde

R.T.: 6.116 min  
 Delta R.T.: 0.001 min  
 Response: 3457354  
 Conc: 1.50 ng/ml



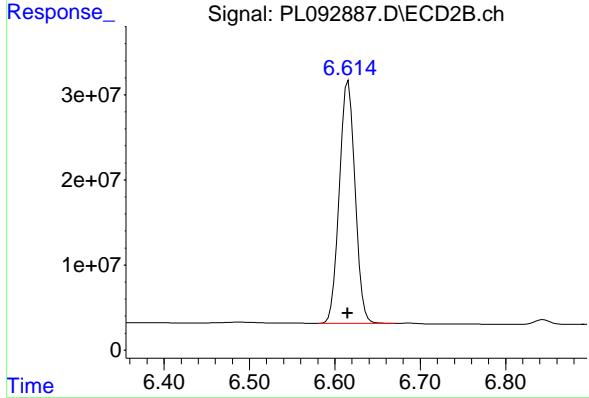
#20 Methoxychlor

R.T.: 7.502 min  
 Delta R.T.: 0.003 min  
 Response: 255650951  
 Conc: 224.26 ng/ml

Instrument :  
 ECD\_L  
 ClientSampleId :  
 PEM

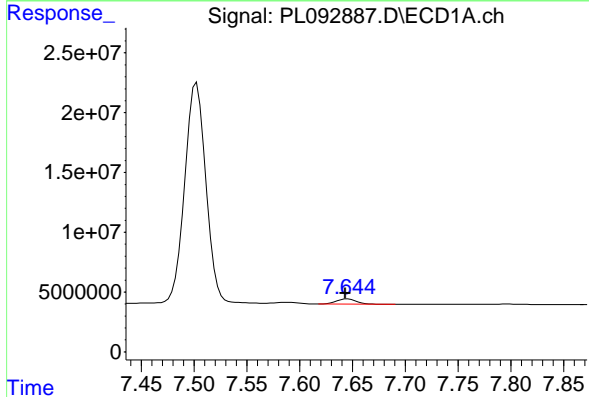
Manual Integrations  
 APPROVED

Reviewed By :Abdul Mirza 11/08/2024  
 Supervised By :Ankita Jodhani 11/08/2024



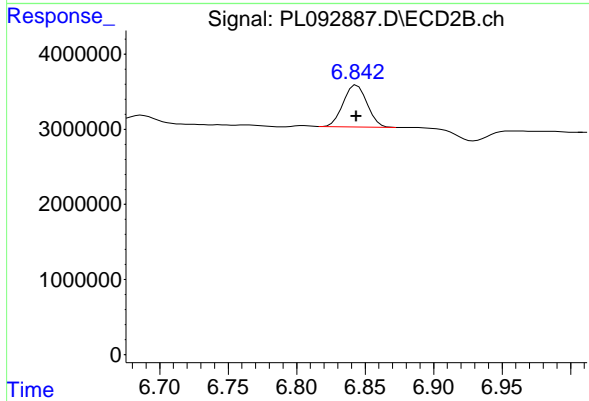
#20 Methoxychlor

R.T.: 6.616 min  
 Delta R.T.: 0.000 min  
 Response: 363360071  
 Conc: 254.45 ng/ml



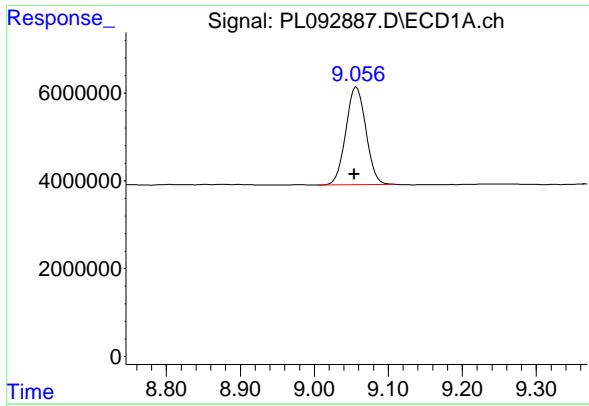
#21 Endrin ketone

R.T.: 7.645 min  
 Delta R.T.: 0.002 min  
 Response: 5780188  
 Conc: 2.39 ng/ml



#21 Endrin ketone

R.T.: 6.842 min  
 Delta R.T.: -0.001 min  
 Response: 6798880  
 Conc: 2.22 ng/ml m



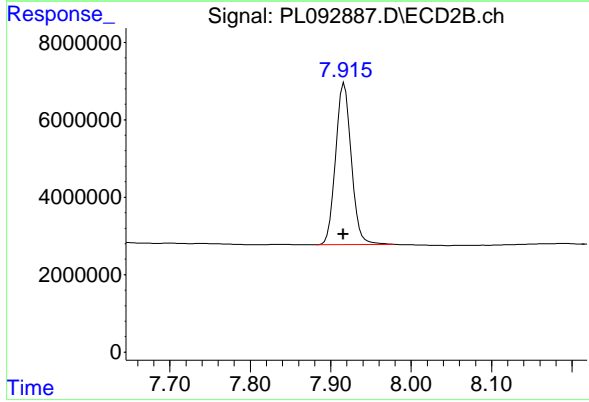
#28 Decachlorobiphenyl

R.T.: 9.057 min  
Delta R.T.: 0.003 min  
Response: 41783907  
Conc: 21.71 ng/ml

Instrument :  
ECD\_L  
ClientSampleId :  
PEM

Manual Integrations  
APPROVED

Reviewed By :Abdul Mirza 11/08/2024  
Supervised By :Ankita Jodhani 11/08/2024



#28 Decachlorobiphenyl

R.T.: 7.917 min  
Delta R.T.: 0.001 min  
Response: 56762202  
Conc: 20.80 ng/ml