

Data Path : Z:\pestpcbsrv\HPCHEM1\ECD_L\Data\PL110822\
 Data File : PL078938.D
 Signal(s) : Signal #1: ECD1A.ch Signal #2: ECD2B.ch
 Acq On : 08 Nov 2022 23:53
 Operator : AR\AJ
 Sample : PB148880BS
 Misc :
 ALS Vial : 26 Sample Multiplier: 1

Instrument :
 ECD_L
 ClientSampleId :

Integration File signal 1: autoint1.e
 Integration File signal 2: autoint2.e
 Quant Time: Nov 09 02:20:55 2022
 Quant Method : Z:\pestpcbsrv\HPCHEM1\ECD_L\methods\PL102122.M
 Quant Title : GC Extractables
 QLast Update : Fri Oct 21 07:08:41 2022
 Response via : Initial Calibration
 Integrator: ChemStation

Volume Inj. : 1 µl
 Signal #1 Phase : ZB-MR2 Signal #2 Phase: ZB-MR1
 Signal #1 Info : 30M x 0.32mm x0.2 Signal #2 Info : 30M x 0.32mm x0.5µm

	Compound	RT#1	RT#2	Resp#1	Resp#2	ng/ml	ng/ml

System Monitoring Compounds							
1)	SA Tetrachlo...	3.321	2.568	38378143	50299245	20.125	19.701
28)	SA Decachlor...	8.767	7.634	31390744	40048400	20.867	21.144
Target Compounds							
2)	A alpha-BHC	3.781	3.054	176.3E6	221.4E6	61.393	56.074
3)	MA gamma-BHC...	4.114	3.375	162.5E6	200.9E6	60.831	55.890
4)	MA Heptachlor	4.684	3.703	163.6E6	196.5E6	63.009	56.662
5)	MB Aldrin	5.022	3.974	153.7E6	198.9E6	62.059	56.806
6)	B beta-BHC	4.329	3.675	67392333	76491842	58.502	53.310
7)	B delta-BHC	4.569	3.895	132.4E6	200.6E6	58.154	55.079
8)	Heptachlo...	5.455	4.470	136.7E6	171.9E6	64.408	57.062
9)	A Endosulfan I	5.840	4.833	125.1E6	160.0E6	58.651	55.894
10)	B gamma-Chl...	5.710	4.718	136.9E6	170.6E6	60.654	55.670
11)	B alpha-Chl...	5.787	4.779	135.7E6	166.8E6	58.656	55.977
12)	B 4,4'-DDE	5.971	4.974	118.2E6	156.7E6	59.069	57.545
13)	MA Dieldrin	6.117	5.094	129.5E6	169.6E6	60.066	57.225
14)	MA Endrin	6.347	5.365	110.9E6	152.8E6	58.423	58.646
15)	B Endosulfa...	6.577	5.661	105.6E6	140.6E6	56.309	61.747
16)	A 4,4'-DDD	6.495	5.525	96795015	127.5E6	58.064	58.062
17)	MA 4,4'-DDT	6.804	5.771	99949823	120.0E6	55.765	55.324
18)	B Endrin al...	6.708	5.840	86021425	111.2E6	59.119	59.244
19)	B Endosulfa...	6.942	6.062	104.7E6	139.6E6	56.885	58.644
20)	A Methoxychlor	7.289	6.348	54146340	70082868	58.798	61.758
21)	B Endrin ke...	7.427	6.558	106.8E6	153.1E6	56.761	59.214
22)	Mirex	7.883	6.730	83107617	108.6E6	56.930	55.203
24)	Chlordane-2	5.022f	4.119	153.7E6	4200015	1857.573	39.464 #
25)	Chlordane-3	5.710	4.718	136.9E6	170.6E6	409.839	559.737 #
26)	Chlordane-4	5.787	4.779	135.7E6	166.8E6	330.581	510.565 #

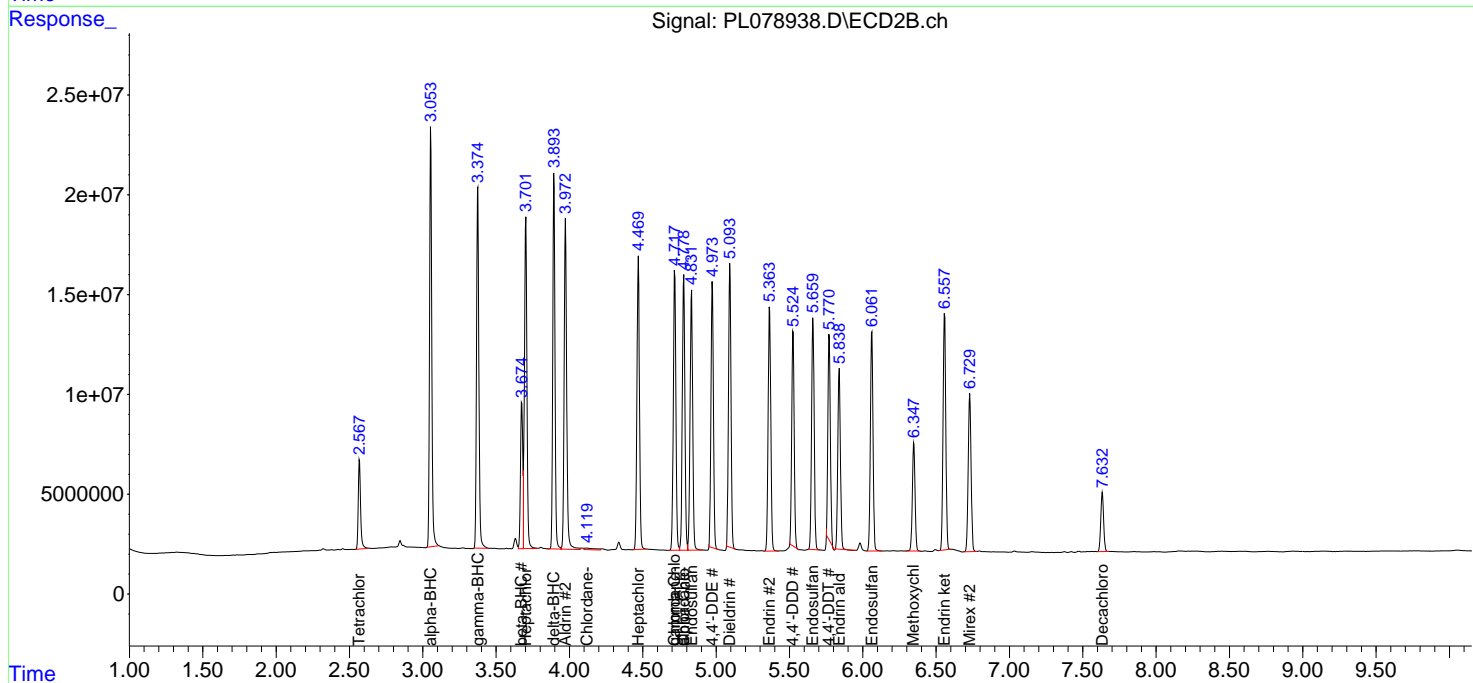
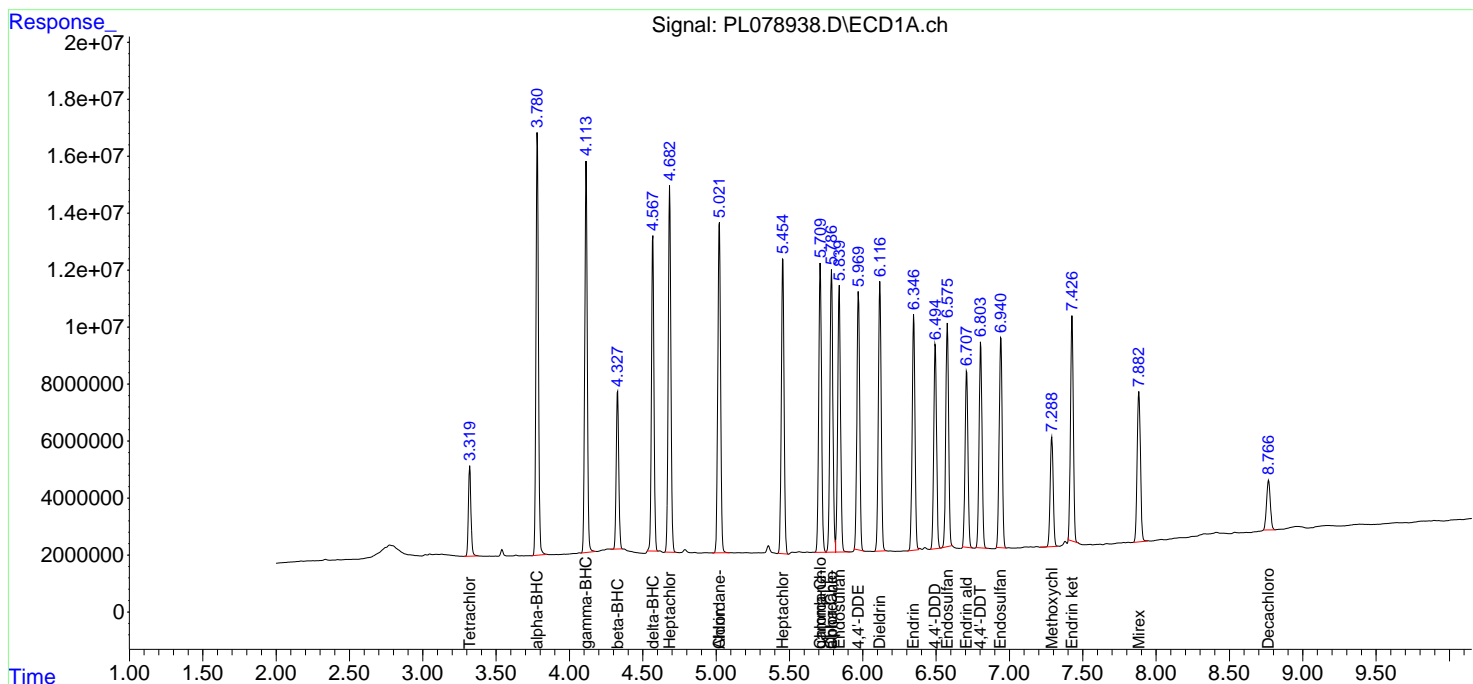
(f)=RT Delta > 1/2 Window (#)=Amounts differ by > 25% (m)=manual int.

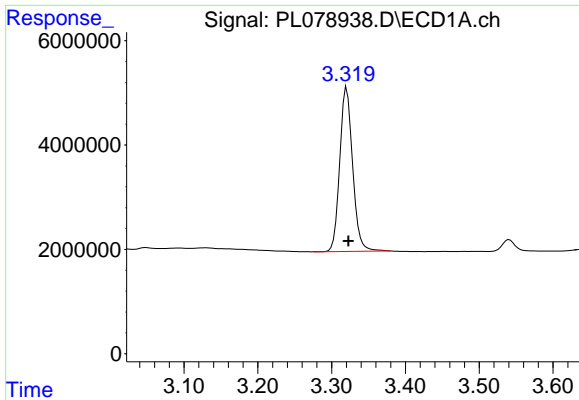
Data Path : Z:\pestpcbsrv\HPCHEM1\ECD_L\Data\PL110822\
 Data File : PL078938.D
 Signal(s) : Signal #1: ECD1A.ch Signal #2: ECD2B.ch
 Acq On : 08 Nov 2022 23:53
 Operator : AR\AJ
 Sample : PB148880BS
 Misc :
 ALS Vial : 26 Sample Multiplier: 1

Instrument :
 ECD_L
 ClientSampleId :

Integration File signal 1: autoint1.e
 Integration File signal 2: autoint2.e
 Quant Time: Nov 09 02:20:55 2022
 Quant Method : Z:\pestpcbsrv\HPCHEM1\ECD_L\methods\PL102122.M
 Quant Title : GC Extractables
 QLast Update : Fri Oct 21 07:08:41 2022
 Response via : Initial Calibration
 Integrator: ChemStation

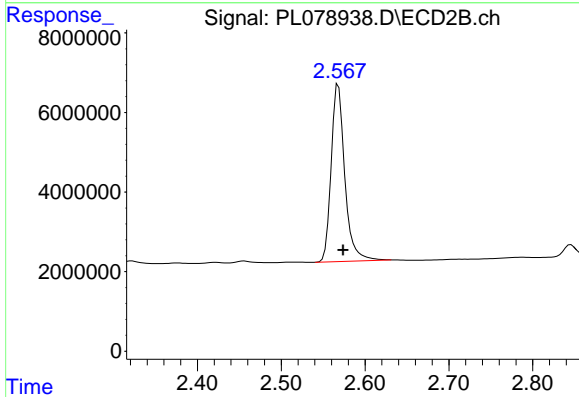
Volume Inj. : 1 µl
 Signal #1 Phase : ZB-MR2 Signal #2 Phase: ZB-MR1
 Signal #1 Info : 30M x 0.32mm x0.2 Signal #2 Info : 30M x 0.32mm x0.5µm



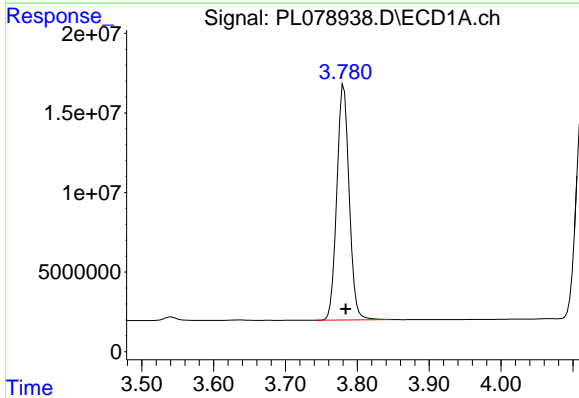


#1 Tetrachloro-m-xylene
 R.T.: 3.321 min
 Delta R.T.: -0.002 min
 Response: 38378143
 Conc: 20.12 ng/ml

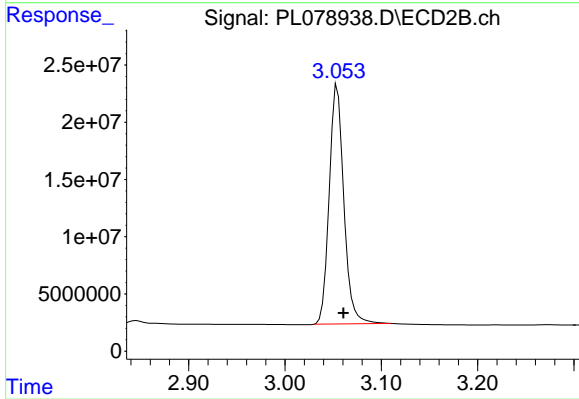
Instrument :
 ECD_L
 ClientSampleId :



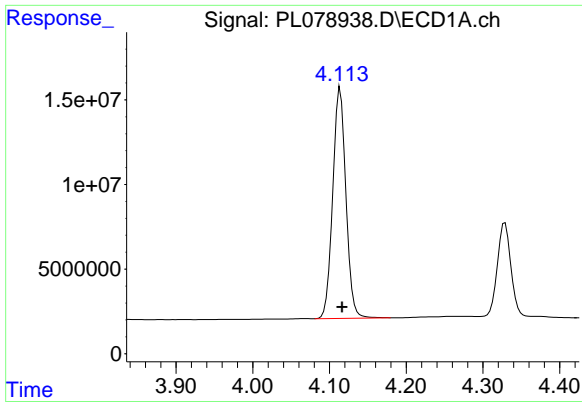
#1 Tetrachloro-m-xylene
 R.T.: 2.568 min
 Delta R.T.: -0.006 min
 Response: 50299245
 Conc: 19.70 ng/ml



#2 alpha-BHC
 R.T.: 3.781 min
 Delta R.T.: -0.002 min
 Response: 176283192
 Conc: 61.39 ng/ml



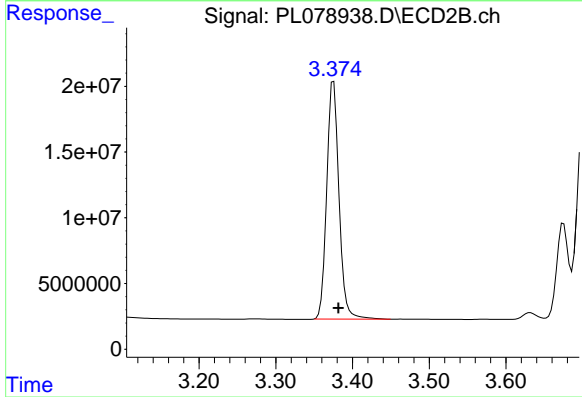
#2 alpha-BHC
 R.T.: 3.054 min
 Delta R.T.: -0.006 min
 Response: 221439481
 Conc: 56.07 ng/ml



#3 gamma-BHC (Lindane)

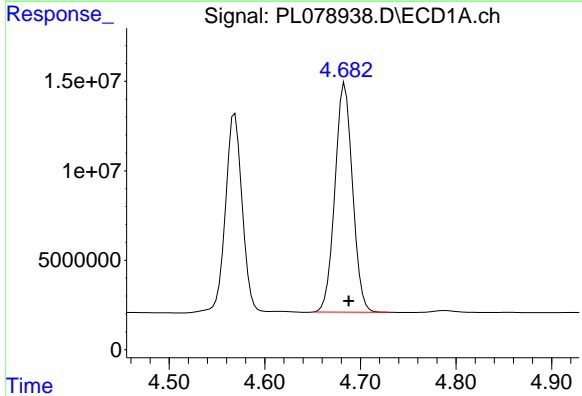
R.T.: 4.114 min
 Delta R.T.: -0.002 min
 Response: 162523492
 Conc: 60.83 ng/ml

Instrument :
 ECD_L
 ClientSampleId :



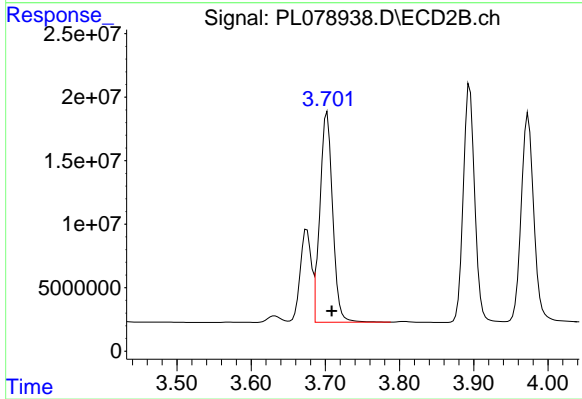
#3 gamma-BHC (Lindane)

R.T.: 3.375 min
 Delta R.T.: -0.006 min
 Response: 200880323
 Conc: 55.89 ng/ml



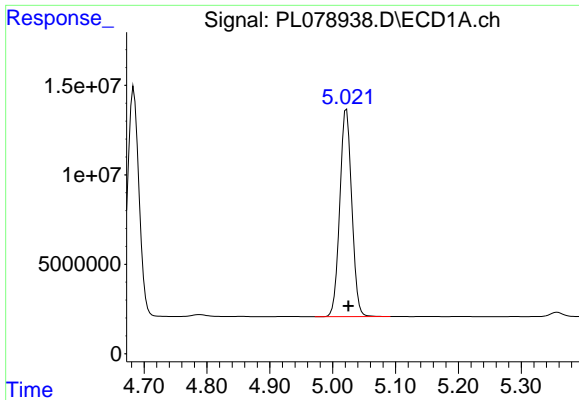
#4 Heptachlor

R.T.: 4.684 min
 Delta R.T.: -0.004 min
 Response: 163573178
 Conc: 63.01 ng/ml



#4 Heptachlor

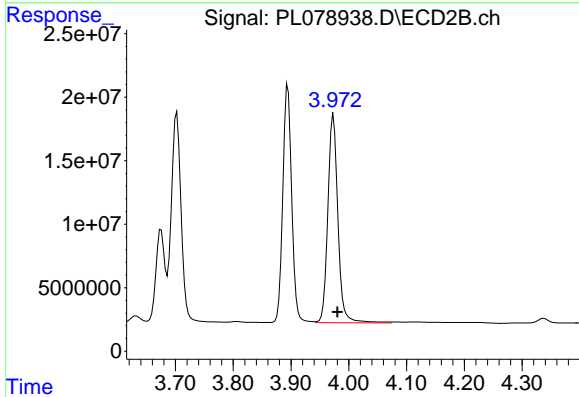
R.T.: 3.703 min
 Delta R.T.: -0.006 min
 Response: 196492955
 Conc: 56.66 ng/ml



#5 Aldrin

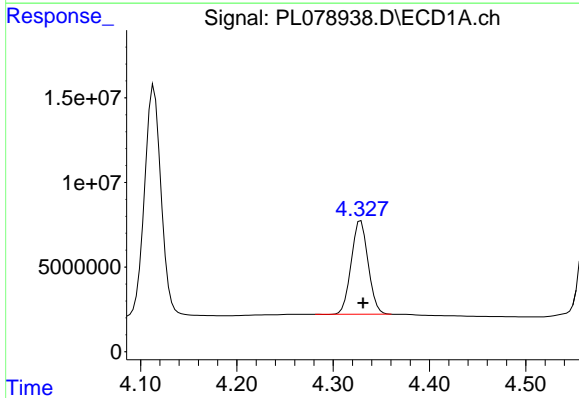
R.T.: 5.022 min
 Delta R.T.: -0.003 min
 Response: 153702594
 Conc: 62.06 ng/ml

Instrument :
 ECD_L
 ClientSampleId :



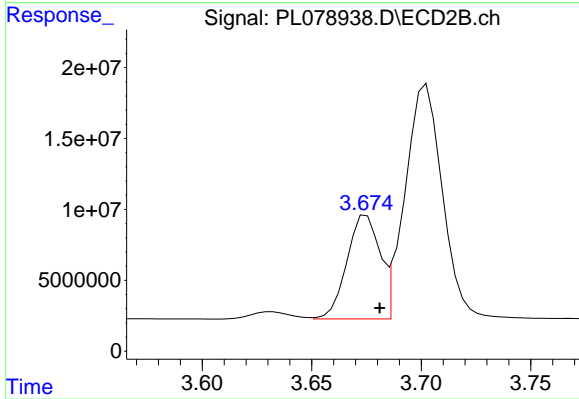
#5 Aldrin

R.T.: 3.974 min
 Delta R.T.: -0.007 min
 Response: 198917670
 Conc: 56.81 ng/ml



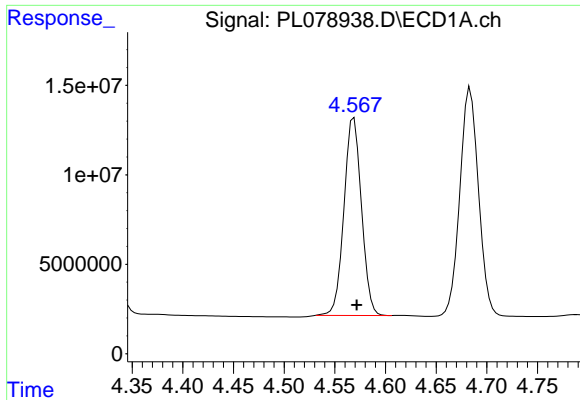
#6 beta-BHC

R.T.: 4.329 min
 Delta R.T.: -0.002 min
 Response: 67392333
 Conc: 58.50 ng/ml



#6 beta-BHC

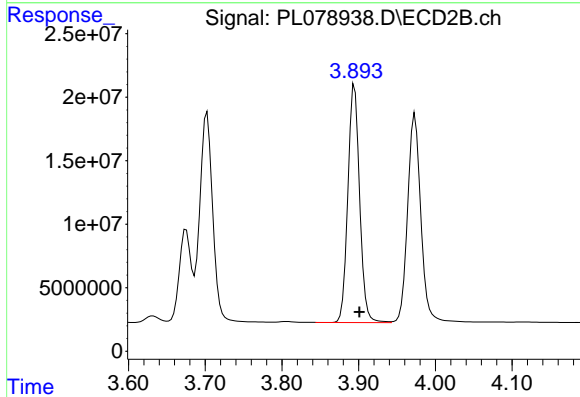
R.T.: 3.675 min
 Delta R.T.: -0.006 min
 Response: 76491842
 Conc: 53.31 ng/ml



#7 delta-BHC

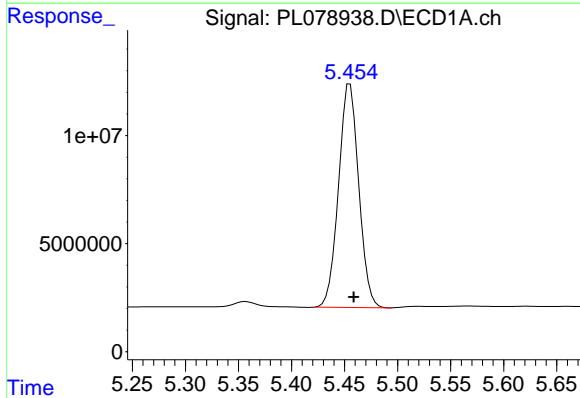
R.T.: 4.569 min
 Delta R.T.: -0.003 min
 Response: 132407771
 Conc: 58.15 ng/ml

Instrument :
 ECD_L
 ClientSampleId :



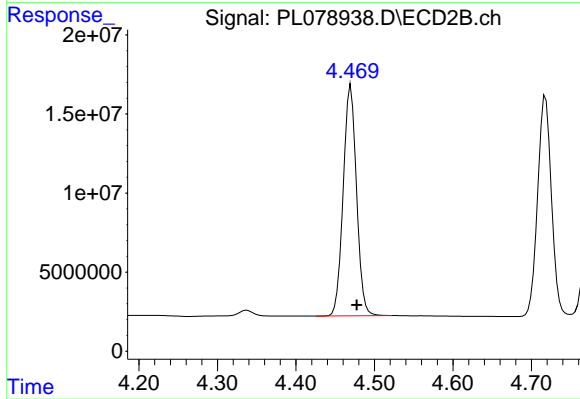
#7 delta-BHC

R.T.: 3.895 min
 Delta R.T.: -0.006 min
 Response: 200559888
 Conc: 55.08 ng/ml



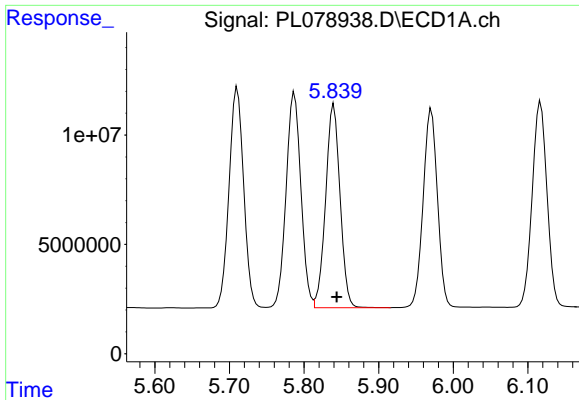
#8 Heptachlor epoxide

R.T.: 5.455 min
 Delta R.T.: -0.004 min
 Response: 136740013
 Conc: 64.41 ng/ml



#8 Heptachlor epoxide

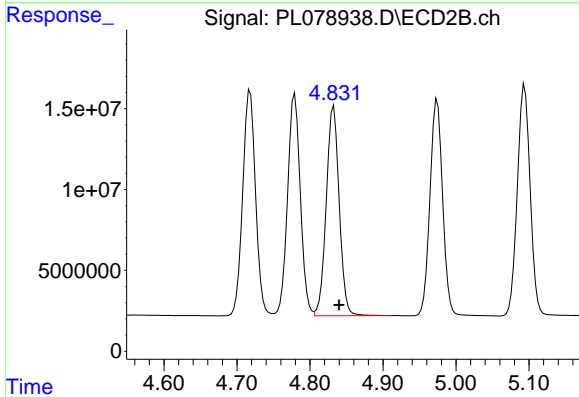
R.T.: 4.470 min
 Delta R.T.: -0.007 min
 Response: 171939625
 Conc: 57.06 ng/ml



#9 Endosulfan I

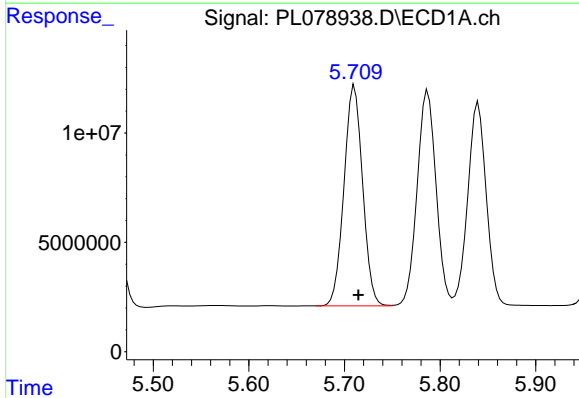
R.T.: 5.840 min
 Delta R.T.: -0.004 min
 Response: 125135581
 Conc: 58.65 ng/ml

Instrument :
 ECD_L
 ClientSampleId :



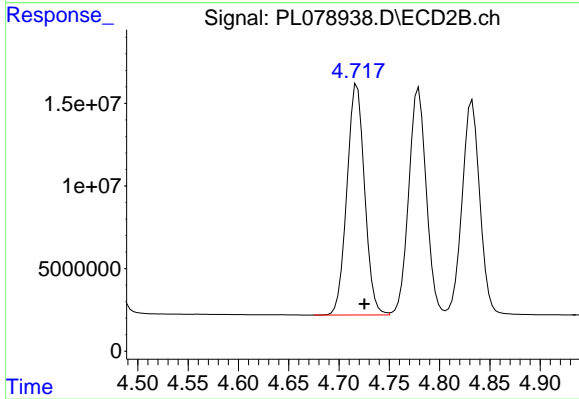
#9 Endosulfan I

R.T.: 4.833 min
 Delta R.T.: -0.007 min
 Response: 160005148
 Conc: 55.89 ng/ml



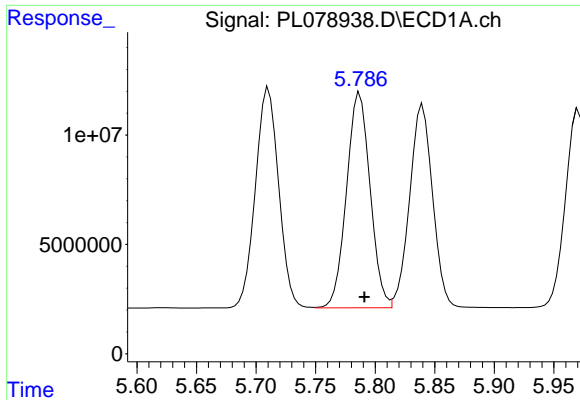
#10 gamma-Chlordane

R.T.: 5.710 min
 Delta R.T.: -0.004 min
 Response: 136904154
 Conc: 60.65 ng/ml



#10 gamma-Chlordane

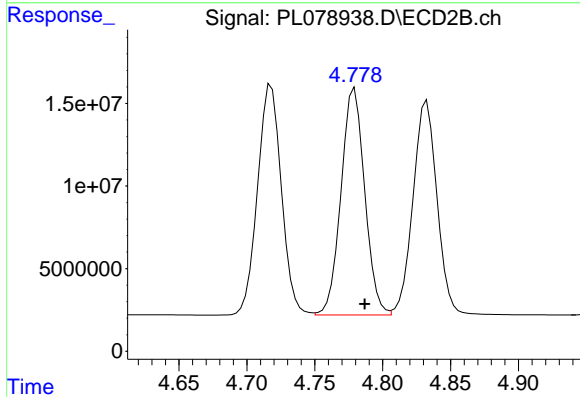
R.T.: 4.718 min
 Delta R.T.: -0.007 min
 Response: 170599109
 Conc: 55.67 ng/ml



#11 alpha-Chlordane

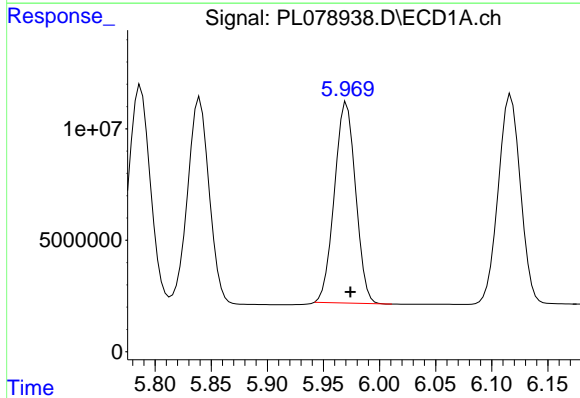
R.T.: 5.787 min
 Delta R.T.: -0.004 min
 Response: 135716569
 Conc: 58.66 ng/ml

Instrument :
 ECD_L
 ClientSampleId :



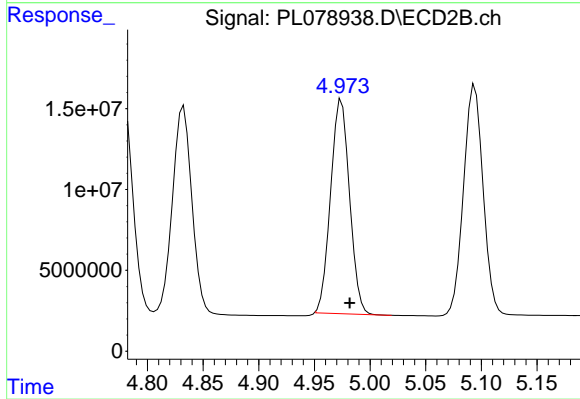
#11 alpha-Chlordane

R.T.: 4.779 min
 Delta R.T.: -0.007 min
 Response: 166834119
 Conc: 55.98 ng/ml



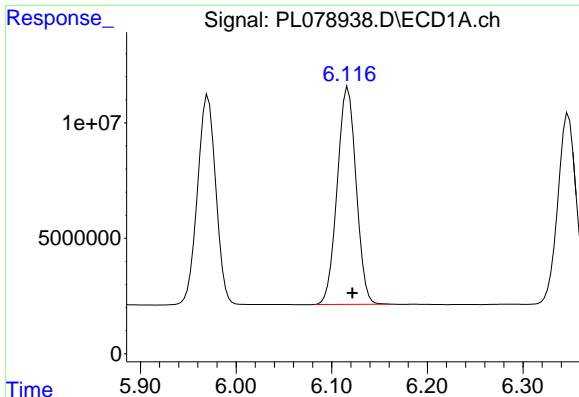
#12 4,4'-DDE

R.T.: 5.971 min
 Delta R.T.: -0.003 min
 Response: 118217982
 Conc: 59.07 ng/ml



#12 4,4'-DDE

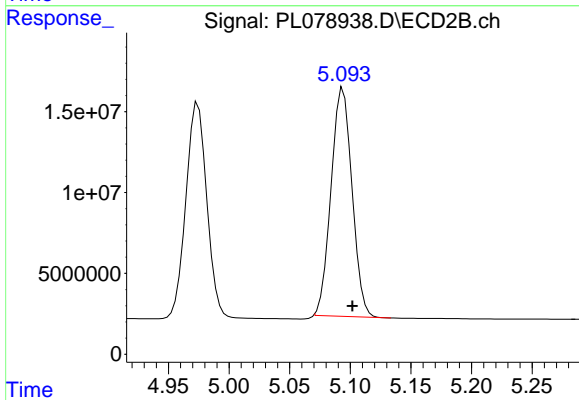
R.T.: 4.974 min
 Delta R.T.: -0.007 min
 Response: 156668691
 Conc: 57.55 ng/ml



#13 Dieldrin

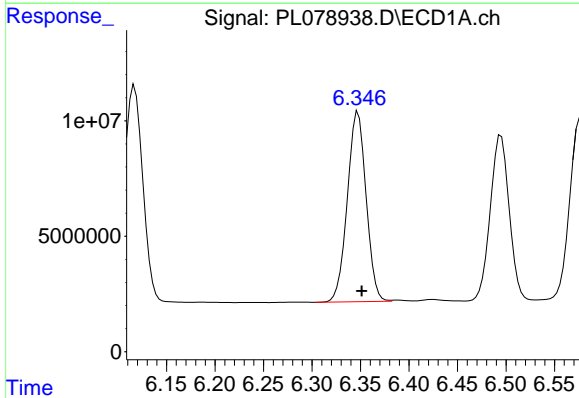
R.T.: 6.117 min
 Delta R.T.: -0.004 min
 Response: 129533218
 Conc: 60.07 ng/ml

Instrument :
 ECD_L
 ClientSampleId :



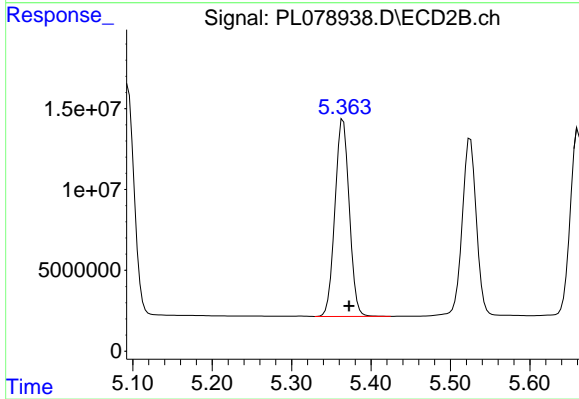
#13 Dieldrin

R.T.: 5.094 min
 Delta R.T.: -0.008 min
 Response: 169562574
 Conc: 57.22 ng/ml



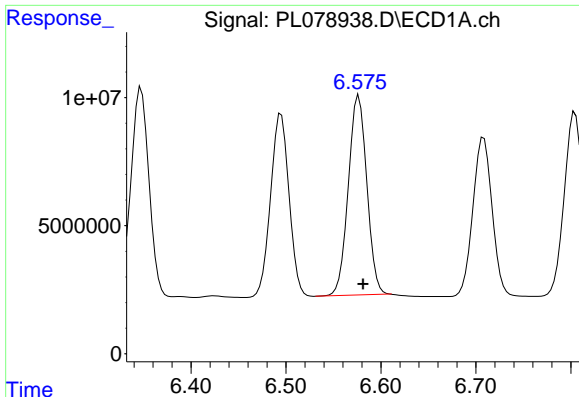
#14 Endrin

R.T.: 6.347 min
 Delta R.T.: -0.004 min
 Response: 110876844
 Conc: 58.42 ng/ml



#14 Endrin

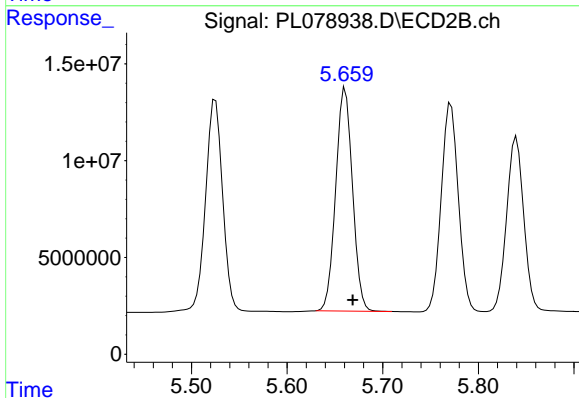
R.T.: 5.365 min
 Delta R.T.: -0.008 min
 Response: 152787471
 Conc: 58.65 ng/ml



#15 Endosulfan II

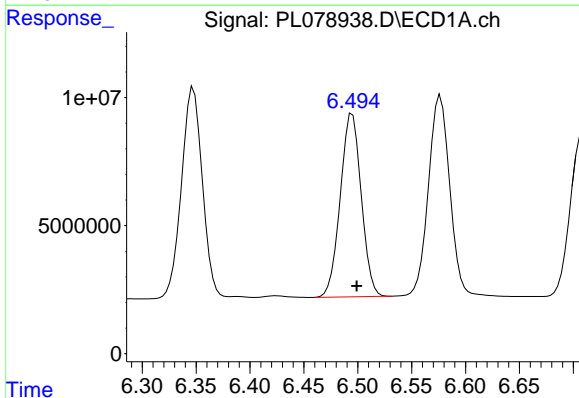
R.T.: 6.577 min
 Delta R.T.: -0.004 min
 Response: 105644797
 Conc: 56.31 ng/ml

Instrument :
 ECD_L
 ClientSampleId :



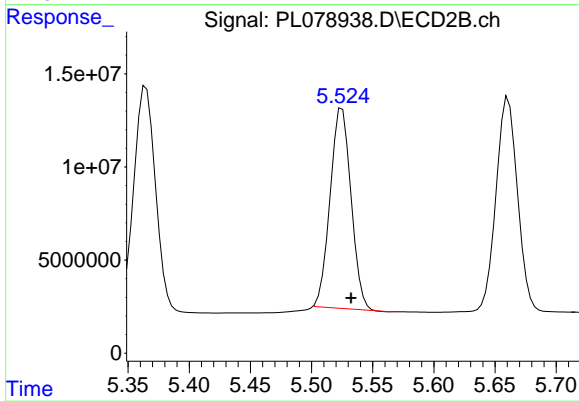
#15 Endosulfan II

R.T.: 5.661 min
 Delta R.T.: -0.008 min
 Response: 140553006
 Conc: 61.75 ng/ml



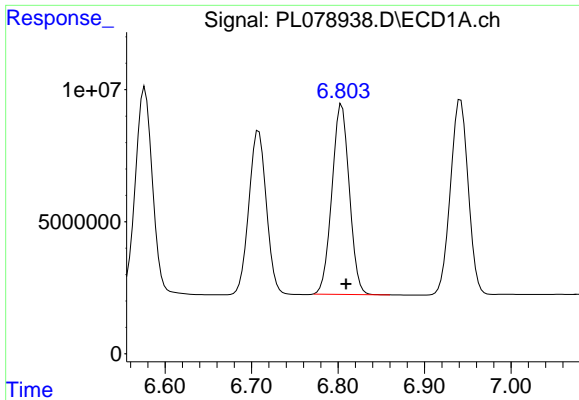
#16 4,4'-DDD

R.T.: 6.495 min
 Delta R.T.: -0.004 min
 Response: 96795015
 Conc: 58.06 ng/ml



#16 4,4'-DDD

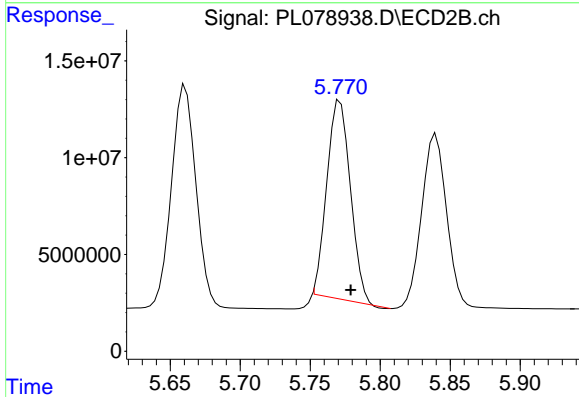
R.T.: 5.525 min
 Delta R.T.: -0.007 min
 Response: 127525969
 Conc: 58.06 ng/ml



#17 4,4'-DDT

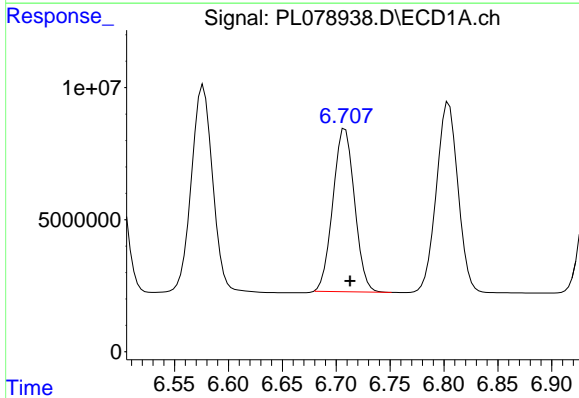
R.T.: 6.804 min
Delta R.T.: -0.005 min
Response: 99949823
Conc: 55.77 ng/ml

Instrument :
ECD_L
ClientSampleId :



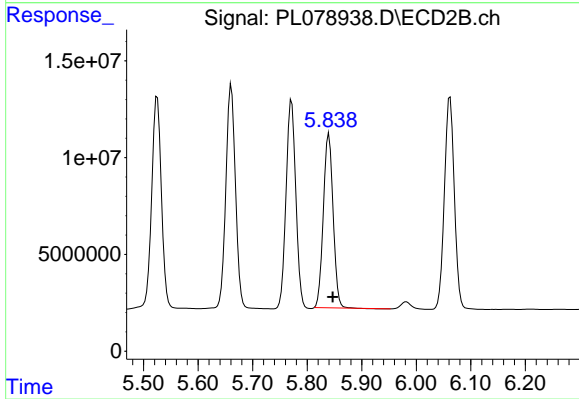
#17 4,4'-DDT

R.T.: 5.771 min
Delta R.T.: -0.008 min
Response: 120005363
Conc: 55.32 ng/ml



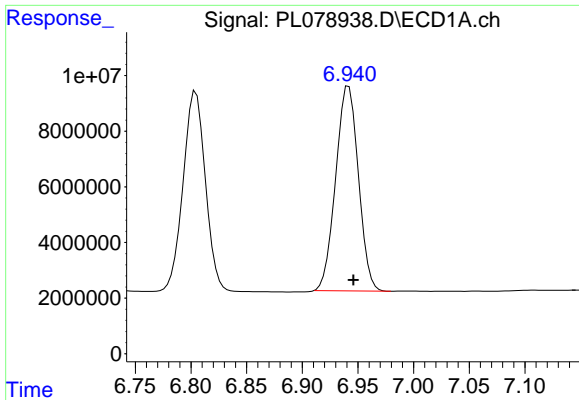
#18 Endrin aldehyde

R.T.: 6.708 min
Delta R.T.: -0.005 min
Response: 86021425
Conc: 59.12 ng/ml



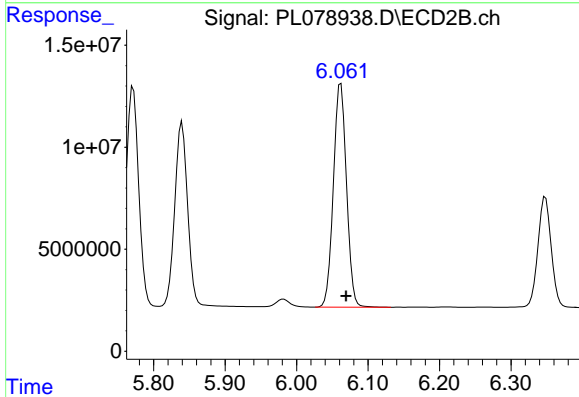
#18 Endrin aldehyde

R.T.: 5.840 min
Delta R.T.: -0.007 min
Response: 111188737
Conc: 59.24 ng/ml

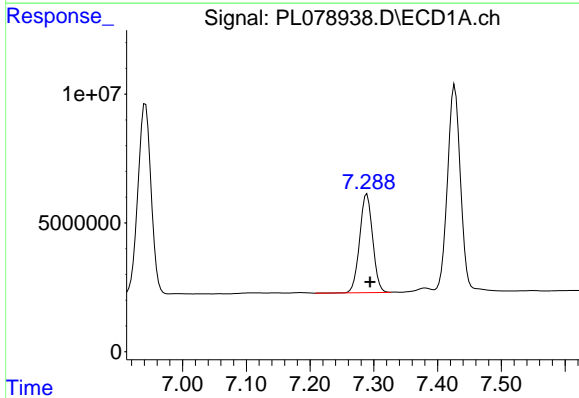


#19 Endosulfan Sulfate
R.T.: 6.942 min
Delta R.T.: -0.004 min
Response: 104663739
Conc: 56.88 ng/ml

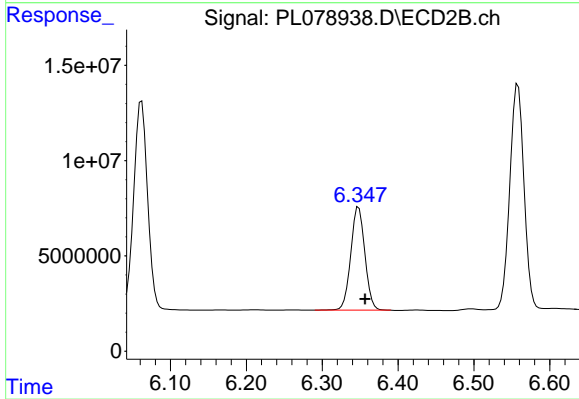
Instrument :
ECD_L
ClientSampleId :



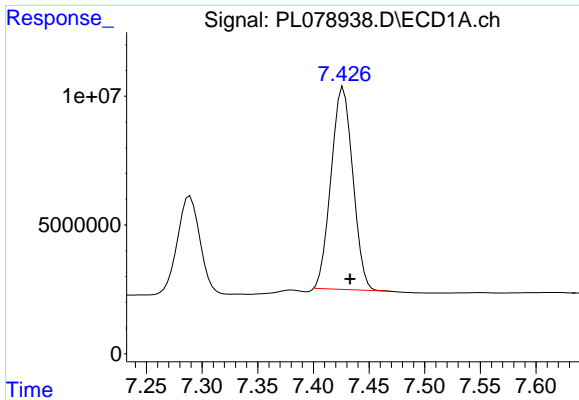
#19 Endosulfan Sulfate
R.T.: 6.062 min
Delta R.T.: -0.007 min
Response: 139602300
Conc: 58.64 ng/ml



#20 Methoxychlor
R.T.: 7.289 min
Delta R.T.: -0.005 min
Response: 54146340
Conc: 58.80 ng/ml



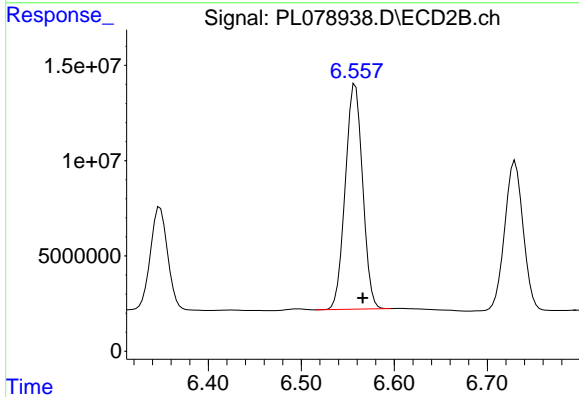
#20 Methoxychlor
R.T.: 6.348 min
Delta R.T.: -0.009 min
Response: 70082868
Conc: 61.76 ng/ml



#21 Endrin ketone

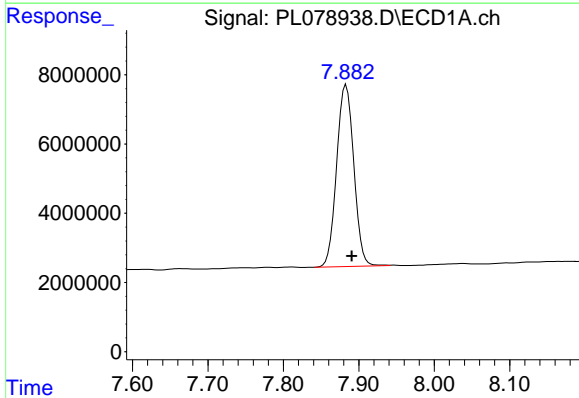
R.T.: 7.427 min
 Delta R.T.: -0.006 min
 Response: 106789775
 Conc: 56.76 ng/ml

Instrument :
 ECD_L
 ClientSampleId :



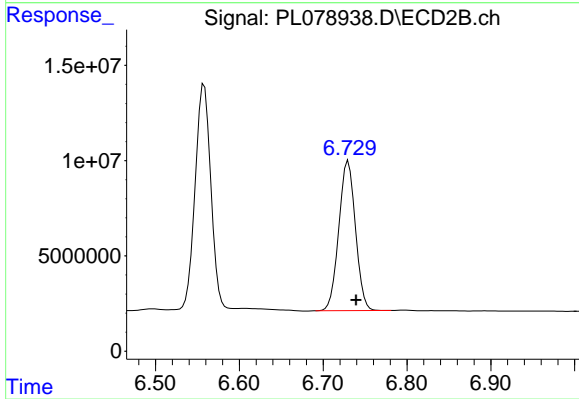
#21 Endrin ketone

R.T.: 6.558 min
 Delta R.T.: -0.008 min
 Response: 153052096
 Conc: 59.21 ng/ml



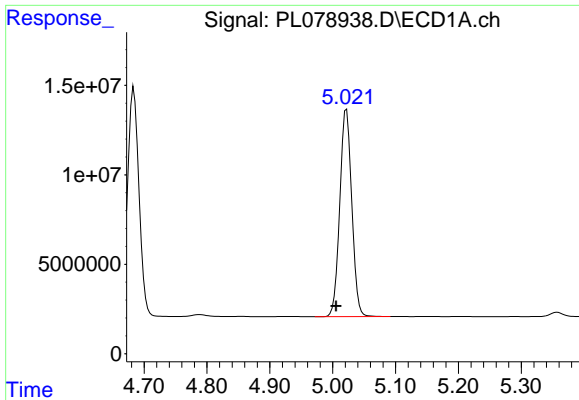
#22 Mirex

R.T.: 7.883 min
 Delta R.T.: -0.007 min
 Response: 83107617
 Conc: 56.93 ng/ml



#22 Mirex

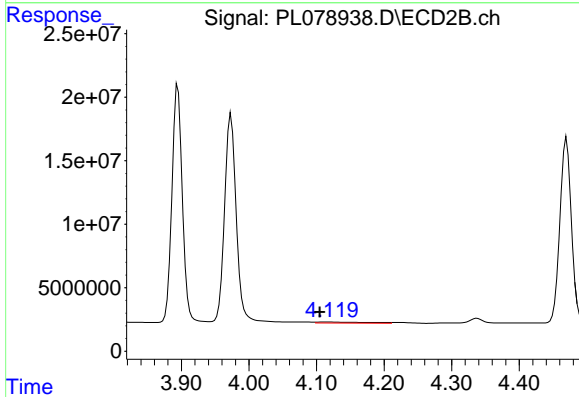
R.T.: 6.730 min
 Delta R.T.: -0.009 min
 Response: 108637716
 Conc: 55.20 ng/ml



#24 Chlordane-2

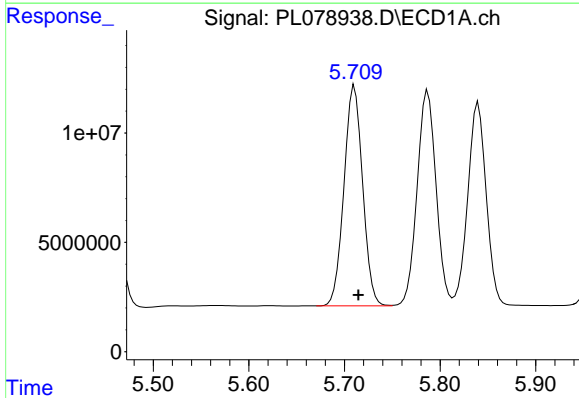
R.T.: 5.022 min
 Delta R.T.: 0.017 min
 Response: 153702594
 Conc: 1857.57 ng/ml

Instrument :
 ECD_L
 ClientSampleId :



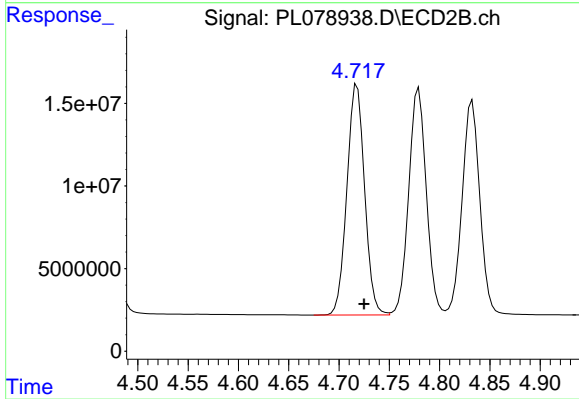
#24 Chlordane-2

R.T.: 4.119 min
 Delta R.T.: 0.014 min
 Response: 4200015
 Conc: 39.46 ng/ml



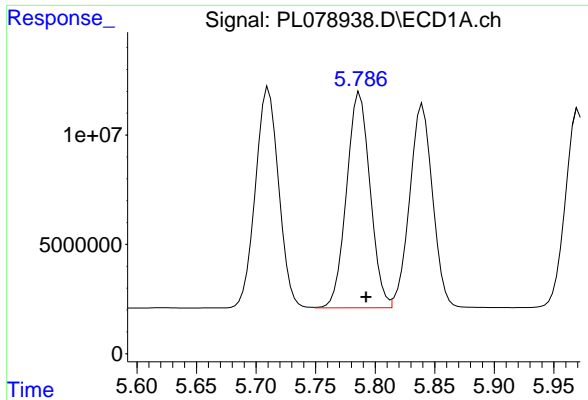
#25 Chlordane-3

R.T.: 5.710 min
 Delta R.T.: -0.004 min
 Response: 136904154
 Conc: 409.84 ng/ml



#25 Chlordane-3

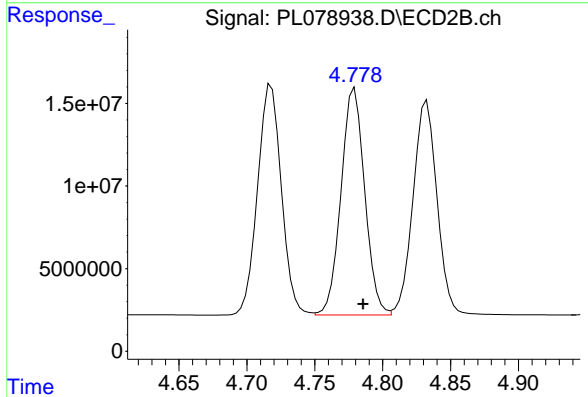
R.T.: 4.718 min
 Delta R.T.: -0.007 min
 Response: 170599109
 Conc: 559.74 ng/ml



#26 Chlordane-4

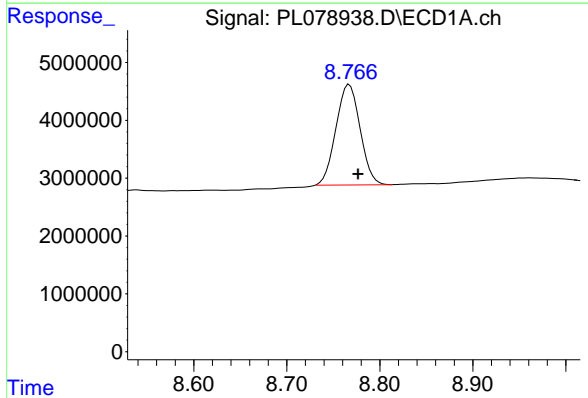
R.T.: 5.787 min
 Delta R.T.: -0.005 min
 Response: 135716569
 Conc: 330.58 ng/ml

Instrument :
 ECD_L
 ClientSampleId :



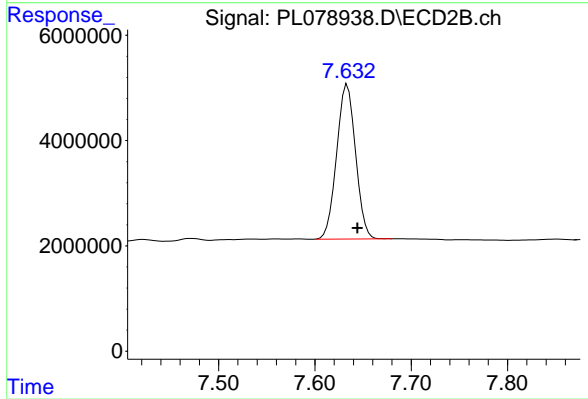
#26 Chlordane-4

R.T.: 4.779 min
 Delta R.T.: -0.006 min
 Response: 166834119
 Conc: 510.57 ng/ml



#28 Decachlorobiphenyl

R.T.: 8.767 min
 Delta R.T.: -0.009 min
 Response: 31390744
 Conc: 20.87 ng/ml



#28 Decachlorobiphenyl

R.T.: 7.634 min
 Delta R.T.: -0.010 min
 Response: 40048400
 Conc: 21.14 ng/ml