

Data Path : Z:\pestpcbsrv\HPCHEM1\ECD_L\Data\PL111119\
 Data File : PL054175.D
 Signal(s) : Signal #1: ECD1A.ch Signal #2: ECD2B.ch
 Acq On : 11 Nov 2019 16:42
 Operator : SG\AJ
 Sample : K5763-11
 Misc :
 ALS Vial : 22 Sample Multiplier: 1

Instrument :
 ECD_L
 ClientSampleId :

Integration File signal 1: autoint1.e
 Integration File signal 2: autoint2.e
 Quant Time: Nov 12 00:27:13 2019
 Quant Method : Z:\pestpcbsrv\HPCHEM1\ECD_L\methods\PL101919.M
 Quant Title : GC Extractables
 QLast Update : Fri Oct 18 13:56:08 2019
 Response via : Initial Calibration
 Integrator: ChemStation

Volume Inj. : 1 µl
 Signal #1 Phase : ZB-MR1 Signal #2 Phase: ZB-MR1
 Signal #1 Info : 30M x 0.32mm x0.2 Signal #2 Info : 30M x 0.32mm x0.5µm

	Compound	RT#1	RT#2	Resp#1	Resp#2	ng/ml	ng/ml

System Monitoring Compounds							
1)	SA Tetrachlo...	3.540	4.043	209.5E6	50132999	19.329	20.034
28)	SA Decachlor...	8.324	9.123	147.2E6	40973747	15.006	14.550
Target Compounds							
6)	B beta-BHC	4.523	0.000	13812216	0	2.096	N.D. #
8)	B Heptachlo...	0.000	5.934	0	2033560	N.D.	0.697 #
9)	A Endosulfan I	5.638f	0.000	9112264	0	0.741	N.D. #
10)	B gamma-Chl...	5.502	6.153	11131570	3037327	0.816	1.041 #
11)	B alpha-Chl...	5.560	6.229	13892356	2903683	1.044	0.995
13)	MA Dieldrin	5.859	0.000	3872054	0	0.297	N.D. #
15)	B Endosulfa...	6.400	0.000	5935342	0	0.531	N.D. #
16)	A 4,4'-DDD	6.245	0.000	3079020	0	0.346	N.D. #
17)	MA 4,4'-DDT	0.000	7.150f	0	1180910	N.D.	0.511 #
23)	Chlordane-1	4.425	0.000	6450318	0	18.187	N.D. #
25)	Chlordane-3	5.502	6.153	11131570	3037327	9.657	8.316
26)	Chlordane-4	5.560	6.229	13892356	2903683	14.819	6.468 #
27)	Chlordane-5	6.400	0.000	5935342	0	16.237	N.D. #

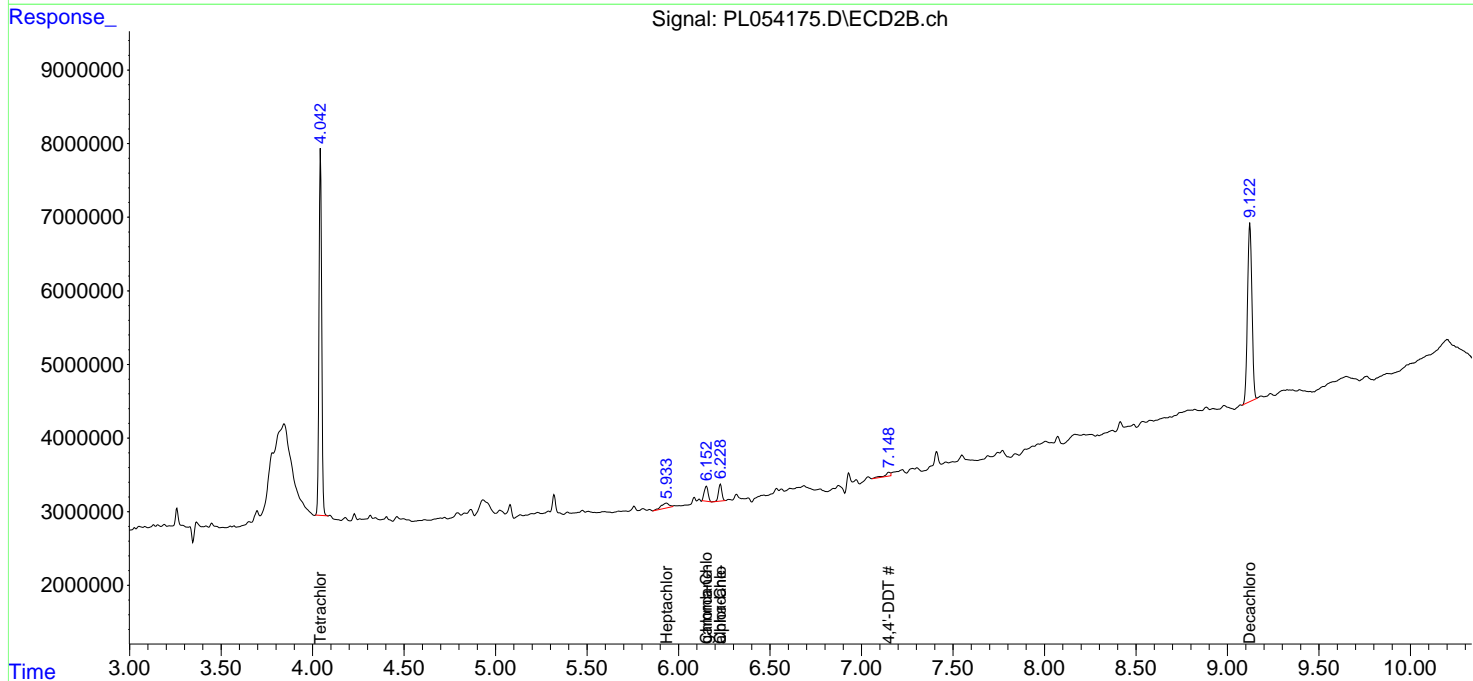
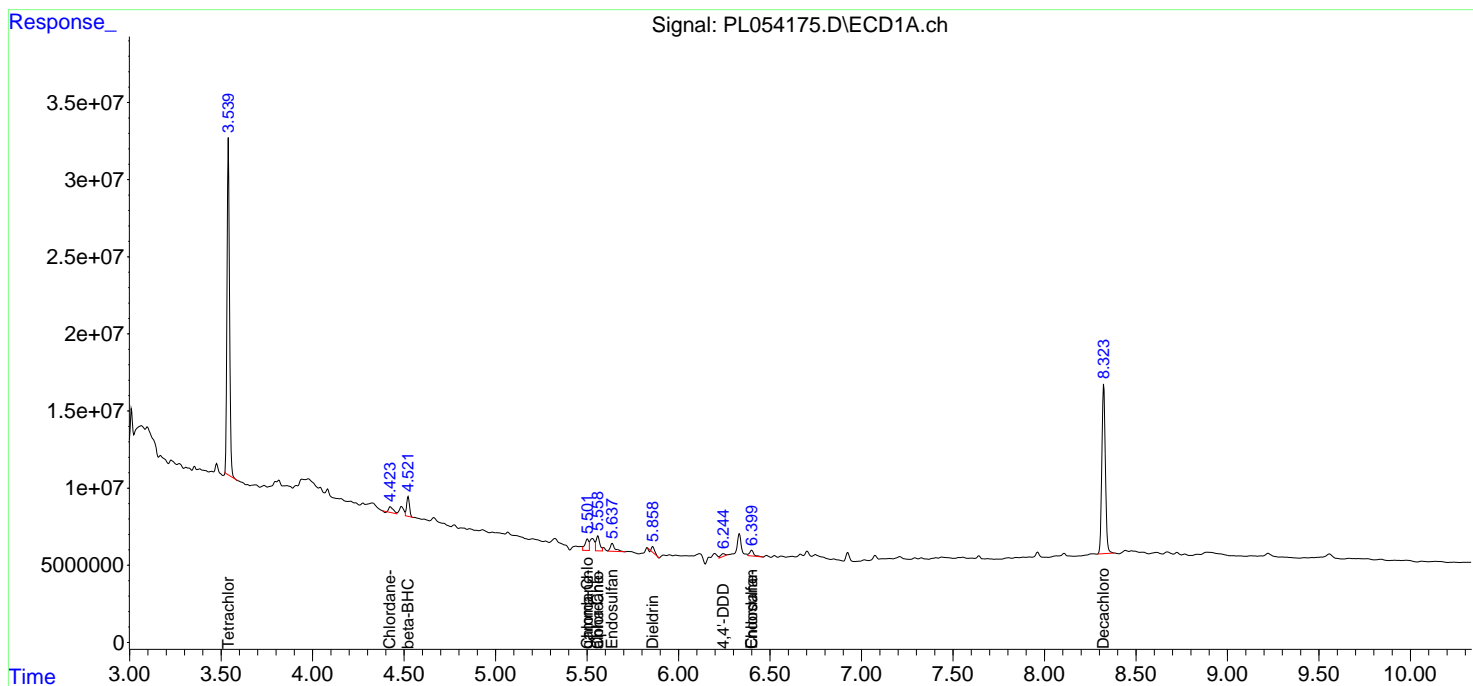
(f)=RT Delta > 1/2 Window (#)=Amounts differ by > 25% (m)=manual int.

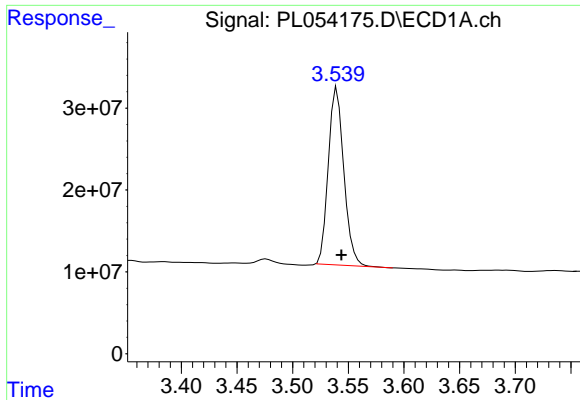
Data Path : Z:\pestpcbsrv\HPCHEM1\ECD_L\Data\PL111119\
 Data File : PL054175.D
 Signal(s) : Signal #1: ECD1A.ch Signal #2: ECD2B.ch
 Acq On : 11 Nov 2019 16:42
 Operator : SG\AJ
 Sample : K5763-11
 Misc :
 ALS Vial : 22 Sample Multiplier: 1

Instrument :
 ECD_L
 ClientSampled :

Integration File signal 1: autoint1.e
 Integration File signal 2: autoint2.e
 Quant Time: Nov 12 00:27:13 2019
 Quant Method : Z:\pestpcbsrv\HPCHEM1\ECD_L\methods\PL101919.M
 Quant Title : GC Extractables
 QLast Update : Fri Oct 18 13:56:08 2019
 Response via : Initial Calibration
 Integrator: ChemStation

Volume Inj. : 1 µl
 Signal #1 Phase : ZB-MR2 Signal #2 Phase: ZB-MR1
 Signal #1 Info : 30M x 0.32mm x0.2 Signal #2 Info : 30M x 0.32mm x0.5µm

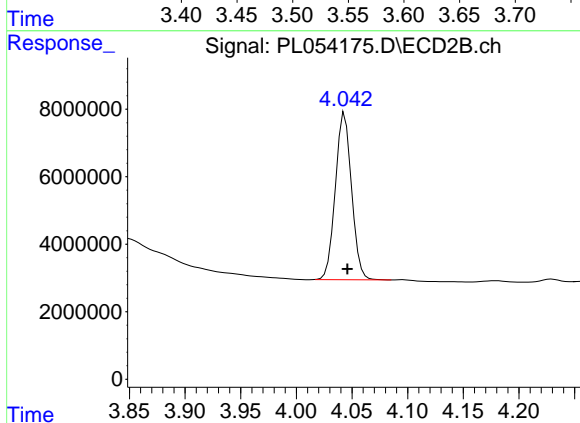




#1 Tetrachloro-m-xylene

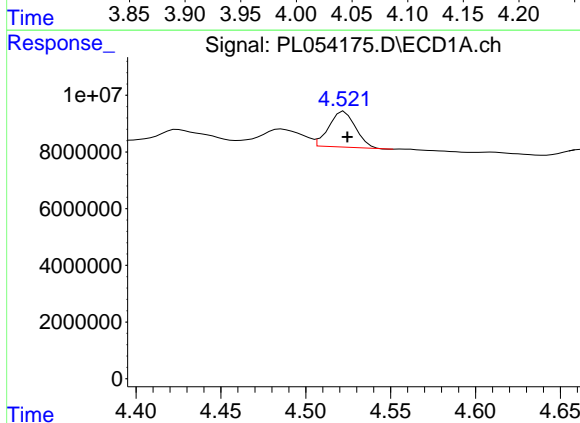
R.T.: 3.540 min
 Delta R.T.: -0.004 min
 Response: 209511969
 Conc: 19.33 ng/ml

Instrument :
 ECD_L
 ClientSampled :



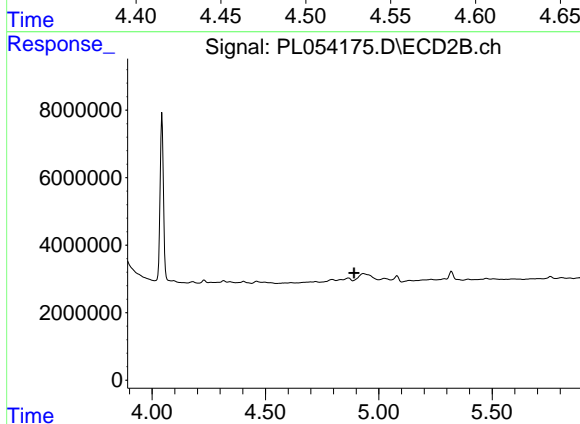
#1 Tetrachloro-m-xylene

R.T.: 4.043 min
 Delta R.T.: -0.002 min
 Response: 50132999
 Conc: 20.03 ng/ml



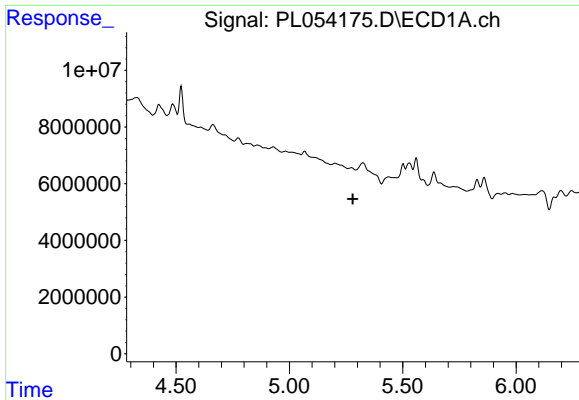
#6 beta-BHC

R.T.: 4.523 min
 Delta R.T.: -0.002 min
 Response: 13812216
 Conc: 2.10 ng/ml



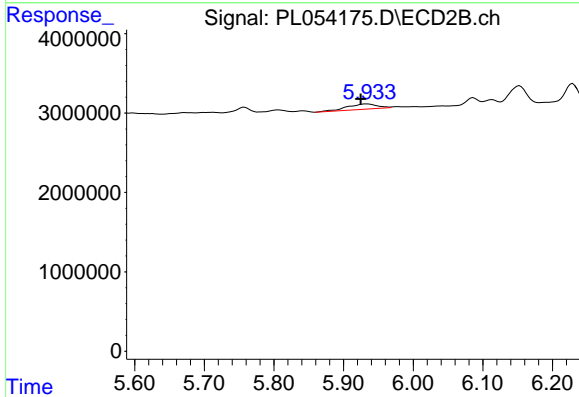
#6 beta-BHC

R.T.: 0.000 min
 Exp R.T. : 4.892 min
 Response: 0
 Conc: N.D.

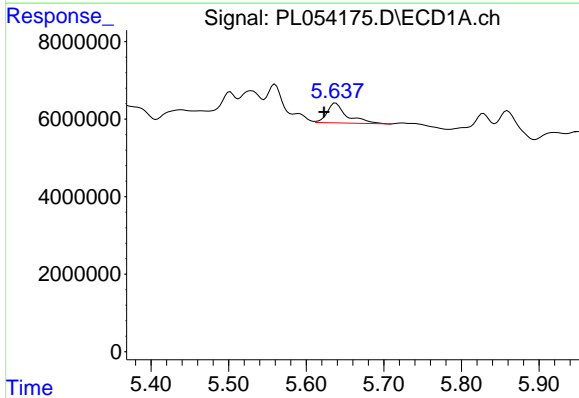


#8 Heptachlor epoxide
 R.T.: 0.000 min
 Exp R.T.: 5.280 min
 Response: 0
 Conc: N.D.

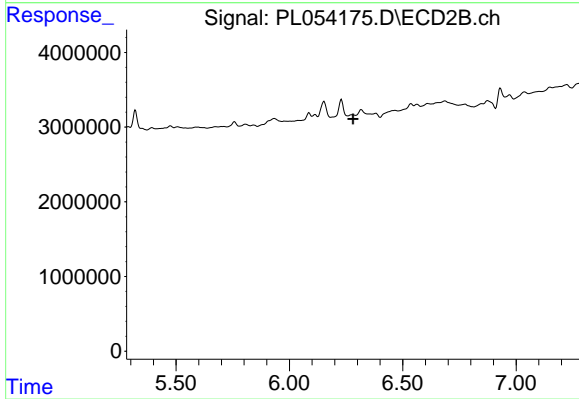
Instrument :
 ECD_L
 ClientSampled :



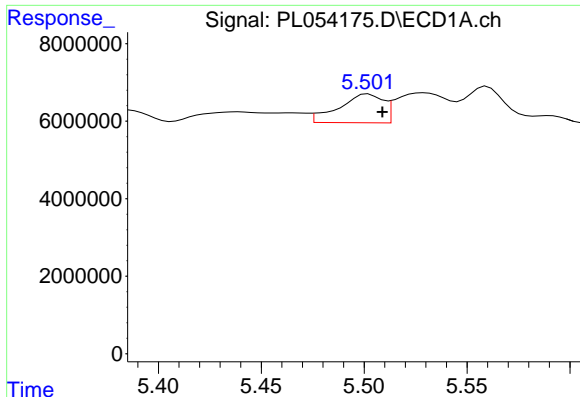
#8 Heptachlor epoxide
 R.T.: 5.934 min
 Delta R.T.: 0.009 min
 Response: 2033560
 Conc: 0.70 ng/ml



#9 Endosulfan I
 R.T.: 5.638 min
 Delta R.T.: 0.015 min
 Response: 9112264
 Conc: 0.74 ng/ml



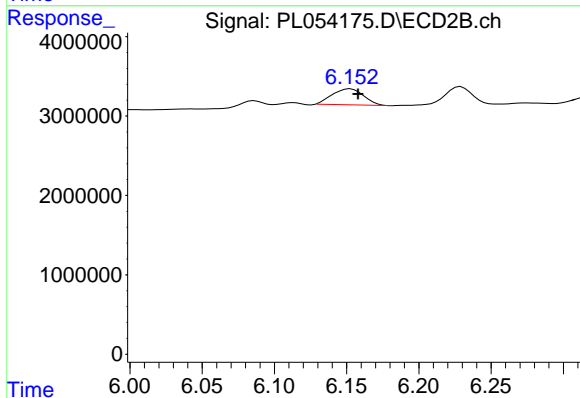
#9 Endosulfan I
 R.T.: 0.000 min
 Exp R.T.: 6.281 min
 Response: 0
 Conc: N.D.



#10 gamma-Chlordane

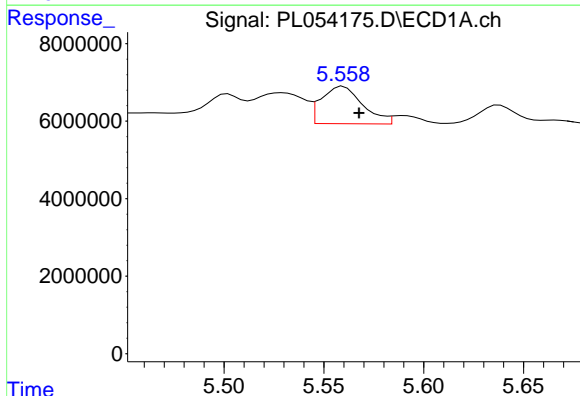
R.T.: 5.502 min
 Delta R.T.: -0.007 min
 Response: 11131570
 Conc: 0.82 ng/ml

Instrument :
 ECD_L
 ClientSampled :



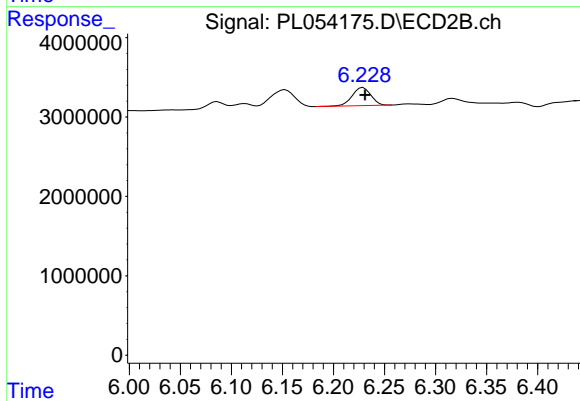
#10 gamma-Chlordane

R.T.: 6.153 min
 Delta R.T.: -0.005 min
 Response: 3037327
 Conc: 1.04 ng/ml



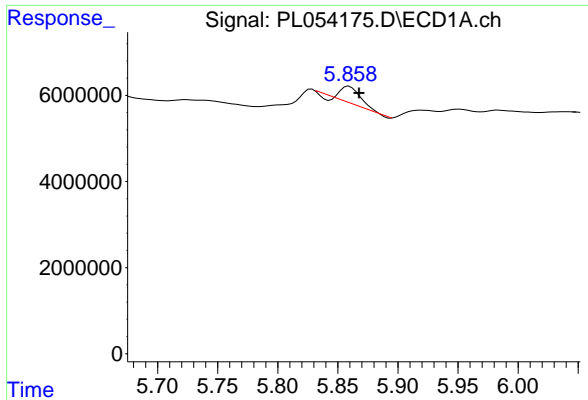
#11 alpha-Chlordane

R.T.: 5.560 min
 Delta R.T.: -0.008 min
 Response: 13892356
 Conc: 1.04 ng/ml



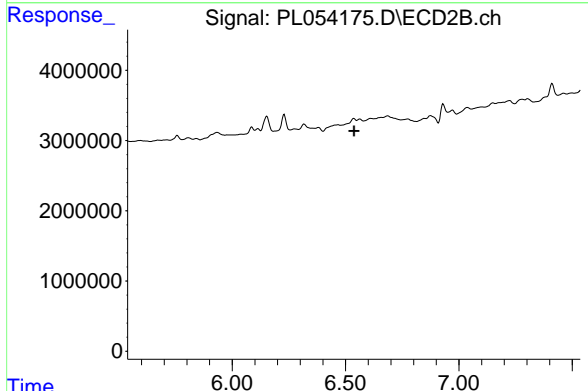
#11 alpha-Chlordane

R.T.: 6.229 min
 Delta R.T.: -0.002 min
 Response: 2903683
 Conc: 0.99 ng/ml

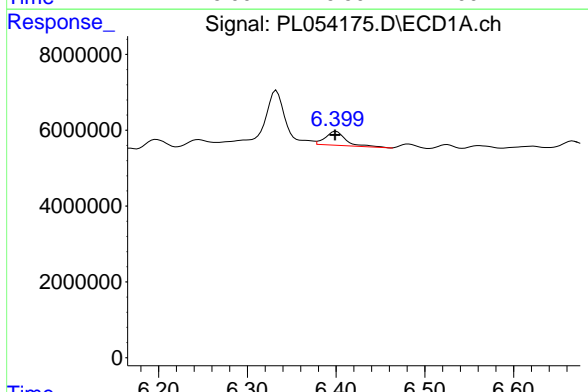


#13 Dieldrin
 R.T.: 5.859 min
 Delta R.T.: -0.008 min
 Response: 3872054
 Conc: 0.30 ng/ml

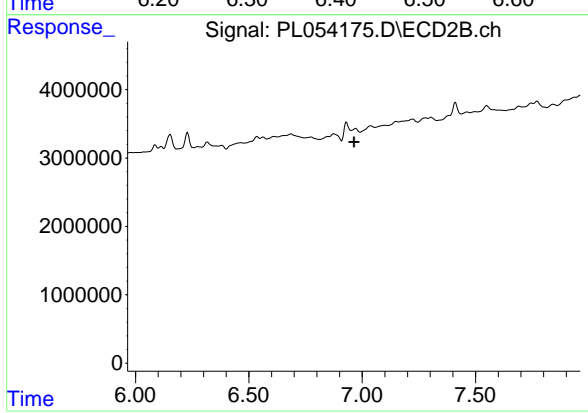
Instrument :
 ECD_L
 ClientSampled :



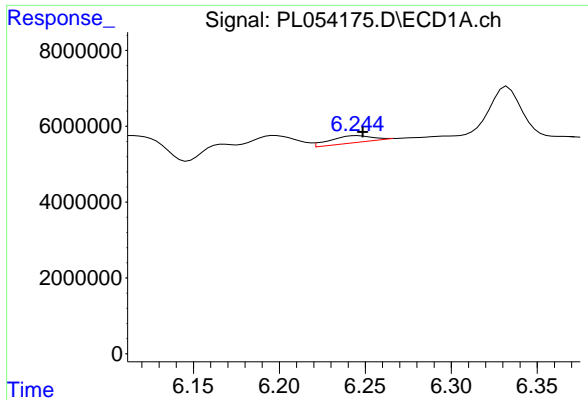
#13 Dieldrin
 R.T.: 0.000 min
 Exp R.T. : 6.538 min
 Response: 0
 Conc: N.D.



#15 Endosulfan II
 R.T.: 6.400 min
 Delta R.T.: 0.001 min
 Response: 5935342
 Conc: 0.53 ng/ml

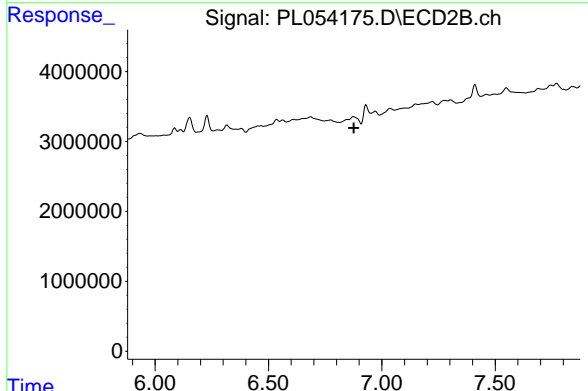


#15 Endosulfan II
 R.T.: 0.000 min
 Exp R.T. : 6.965 min
 Response: 0
 Conc: N.D.

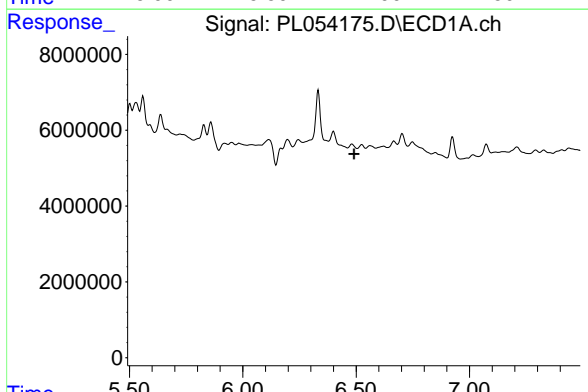


#16 4,4'-DDD
 R.T.: 6.245 min
 Delta R.T.: -0.003 min
 Response: 3079020
 Conc: 0.35 ng/ml

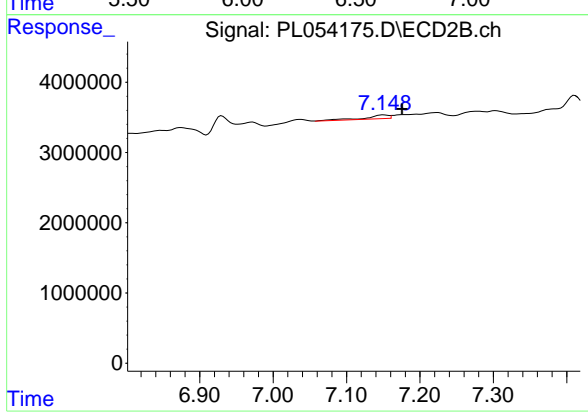
Instrument :
 ECD_L
 ClientSampleId :



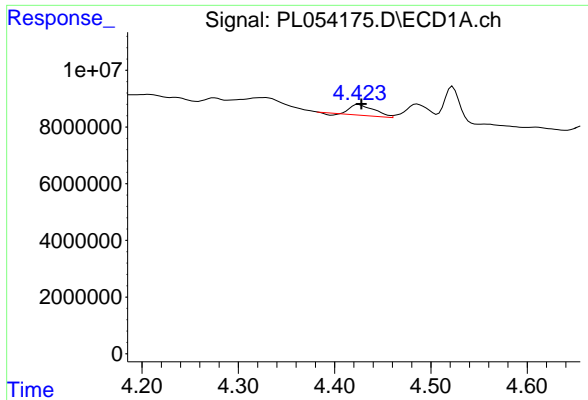
#16 4,4'-DDD
 R.T.: 0.000 min
 Exp R.T. : 6.877 min
 Response: 0
 Conc: N.D.



#17 4,4'-DDT
 R.T.: 0.000 min
 Exp R.T. : 6.491 min
 Response: 0
 Conc: N.D.

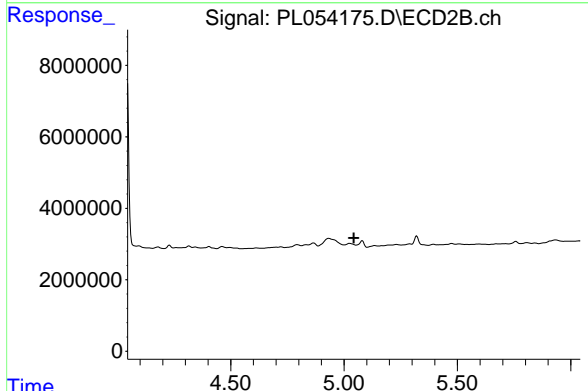


#17 4,4'-DDT
 R.T.: 7.150 min
 Delta R.T.: -0.026 min
 Response: 1180910
 Conc: 0.51 ng/ml

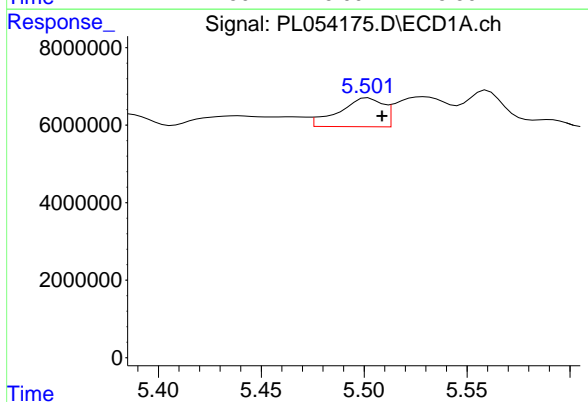


#23 Chlordane-1
 R.T.: 4.425 min
 Delta R.T.: -0.003 min
 Response: 6450318
 Conc: 18.19 ng/ml

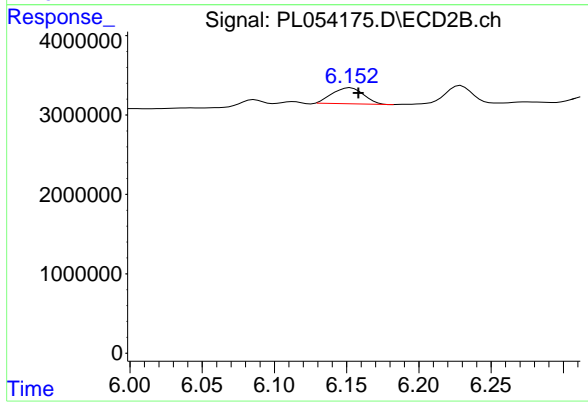
Instrument :
 ECD_L
 ClientSampleId :



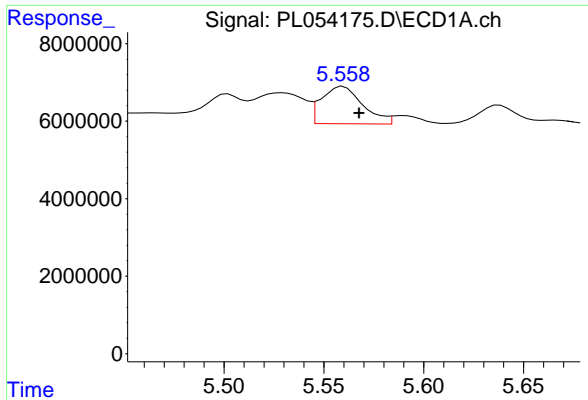
#23 Chlordane-1
 R.T.: 0.000 min
 Exp R.T. : 5.043 min
 Response: 0
 Conc: N.D.



#25 Chlordane-3
 R.T.: 5.502 min
 Delta R.T.: -0.007 min
 Response: 11131570
 Conc: 9.66 ng/ml

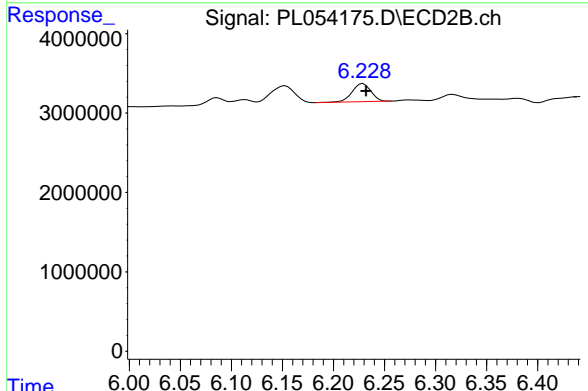


#25 Chlordane-3
 R.T.: 6.153 min
 Delta R.T.: -0.006 min
 Response: 3037327
 Conc: 8.32 ng/ml

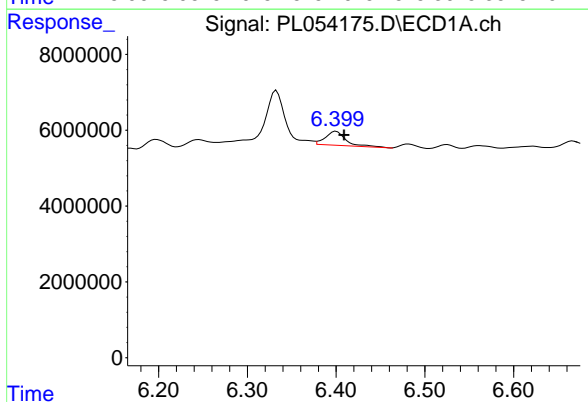


#26 Chlordane-4
 R.T.: 5.560 min
 Delta R.T.: -0.008 min
 Response: 13892356
 Conc: 14.82 ng/ml

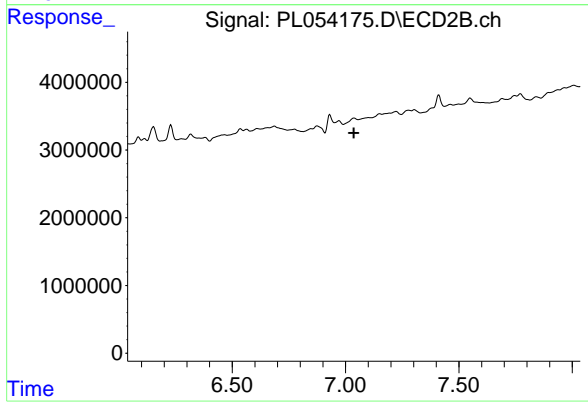
Instrument :
 ECD_L
 ClientSampled :



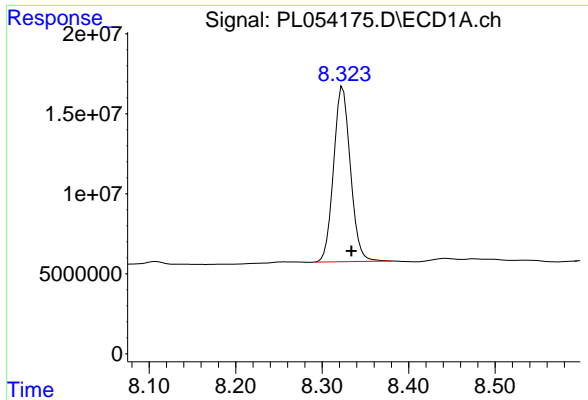
#26 Chlordane-4
 R.T.: 6.229 min
 Delta R.T.: -0.003 min
 Response: 2903683
 Conc: 6.47 ng/ml



#27 Chlordane-5
 R.T.: 6.400 min
 Delta R.T.: -0.009 min
 Response: 5935342
 Conc: 16.24 ng/ml



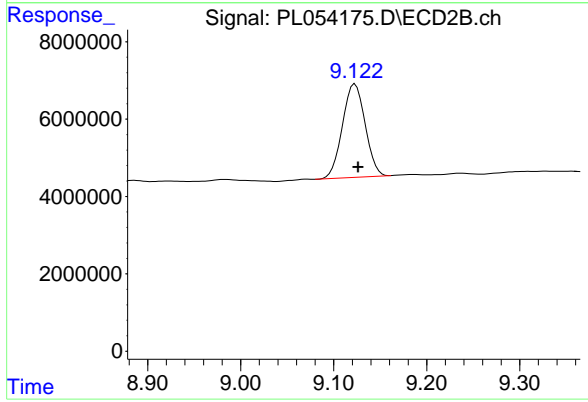
#27 Chlordane-5
 R.T.: 0.000 min
 Exp R.T. : 7.037 min
 Response: 0
 Conc: N.D.



#28 Decachlorobiphenyl

R.T.: 8.324 min
Delta R.T.: -0.010 min
Response: 147234565
Conc: 15.01 ng/ml

Instrument :
ECD_L
ClientSampleId :



#28 Decachlorobiphenyl

R.T.: 9.123 min
Delta R.T.: -0.003 min
Response: 40973747
Conc: 14.55 ng/ml