

Data Path : Z:\pestpcbsrv\HPCHEM1\ECD_L\Data\PL111120\
 Data File : PL062946.D
 Signal(s) : Signal #1: ECD1A.ch Signal #2: ECD2B.ch
 Acq On : 11 Nov 2020 14:35
 Operator : DD\AJ
 Sample : L4697-07MSD
 Misc :
 ALS Vial : 14 Sample Multiplier: 1

Instrument :
 ECD_L
 ClientSampleId :
 TP-2-DMSD

Integration File signal 1: autoint1.e
 Integration File signal 2: autoint2.e
 Quant Time: Nov 12 00:40:46 2020
 Quant Method : Z:\pestpcbsrv\HPCHEM1\ECD_L\methods\PL102120.M
 Quant Title : GC Extractables
 QLast Update : Thu Oct 22 04:25:31 2020
 Response via : Initial Calibration
 Integrator: ChemStation

Volume Inj. : 1 µl
 Signal #1 Phase : ZB-MR2 Signal #2 Phase: ZB-MR1
 Signal #1 Info : 30M x 0.32mm x0.2 Signal #2 Info : 30M x 0.32mm x0.5µm

Compound	RT#1	RT#2	Resp#1	Resp#2	ng/ml	ng/ml

System Monitoring Compounds						
1) SA Tetrachlo...	3.411	3.951	40898100	74499431	23.777	25.351
28) SA Decachlor...	8.127	8.991	33564767	41957478	20.922	20.047
Target Compounds						
2) A alpha-BHC	3.843	4.338	142.5E6	275.9E6	55.891	62.105
3) MA gamma-BHC...	4.123	4.621	126.3E6	241.3E6	54.514	57.794
4) MA Heptachlor	4.420	5.126	119.8E6	215.6E6	55.835	54.063
5) MB Aldrin	4.664	5.429	108.1E6	195.4E6	56.608	53.974
6) B beta-BHC	4.372	4.792	53893120	103.8E6	56.421	55.126
7) B delta-BHC	4.573	5.007	121.8E6	207.3E6	56.036	59.230
8) B Heptachlor...	5.103	5.815	99776083	168.9E6	54.684	52.144
9) A Endosulfan I	5.438	6.170	91594570	151.0E6	54.794	47.889
10) B gamma-Chl...	5.328	6.048	98281742	161.4E6	54.553	47.950
11) B alpha-Chl...	5.385	6.121	97676461	161.2E6	54.032	47.856
12) B 4,4'-DDE	5.551	6.279	90272673	155.9E6	54.564	48.396
13) MA Dieldrin	5.679	6.426	93884188	150.0E6	53.133	46.858
14) MA Endrin	5.934	6.644	84834861	125.3E6	50.989	44.882
15) B Endosulfa...	6.206	6.854	77801187	115.4E6	47.191	40.366
16) A 4,4'-DDD	6.063	6.769	72901467	121.0E6	51.539	47.270
17) MA 4,4'-DDT	6.301	7.067	69637061	110.3E6	52.180	49.128
18) B Endrin al...	6.373	6.977	63281790	95334534	43.580	41.803
19) B Endosulfa...	6.585	7.200	78859763	109.4E6	47.787	45.580
20) A Methoxychlor	6.845	7.527	39890553	53517787	46.315	43.316
21) B Endrin ke...	7.071	7.669	89042298	118.4E6	49.385	49.946
22) Mirex	7.257	8.122	70519597	80391030	49.743	47.176
23) Chlordane-1	4.275	0.000	502813	0	9.754	N.D. #
24) Chlordane-2	0.000	5.429f	0	195.4E6	N.D.	1791.680 #
25) Chlordane-3	5.328	6.048	98281742	161.4E6	641.823	399.609 #
26) Chlordane-4	5.385	6.121	97676461	161.2E6	749.853	332.908 #
27) Chlordane-5	6.206	0.000	77801187	0	1612.605	N.D. #

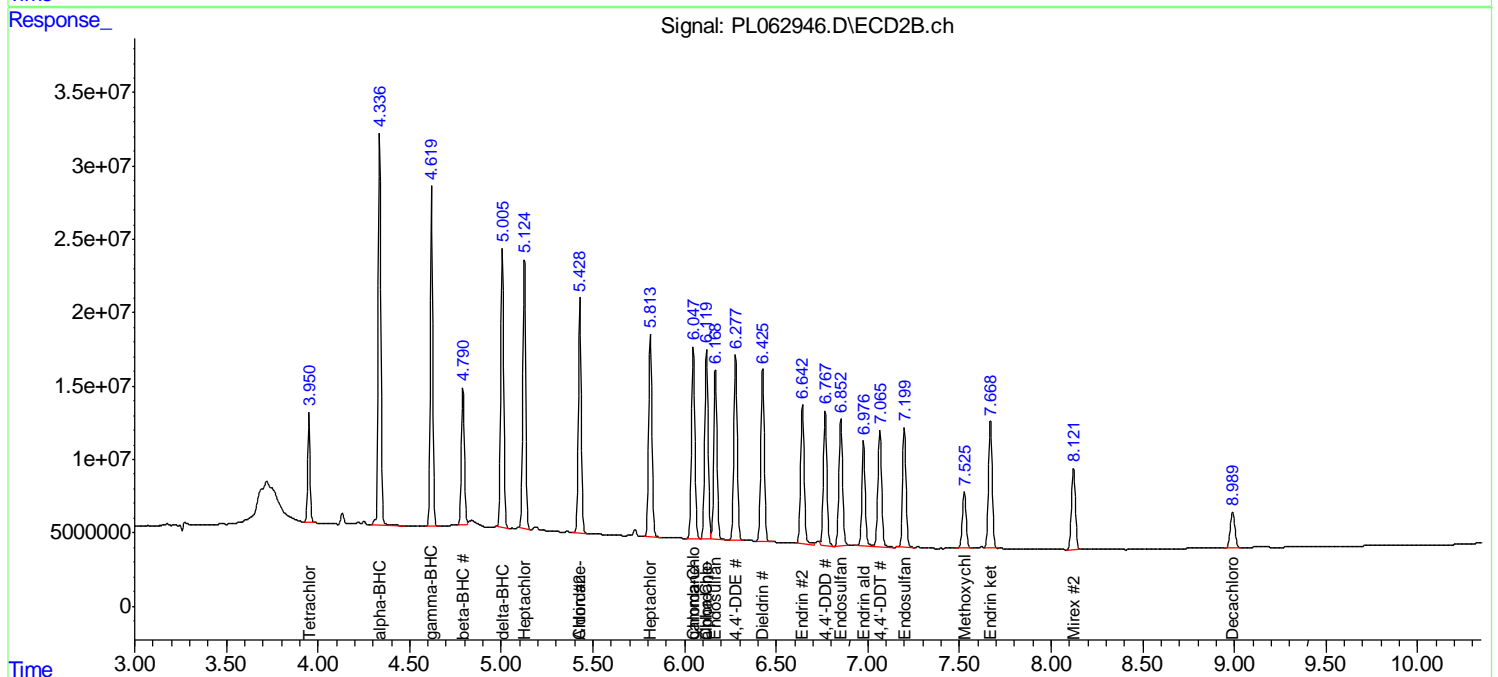
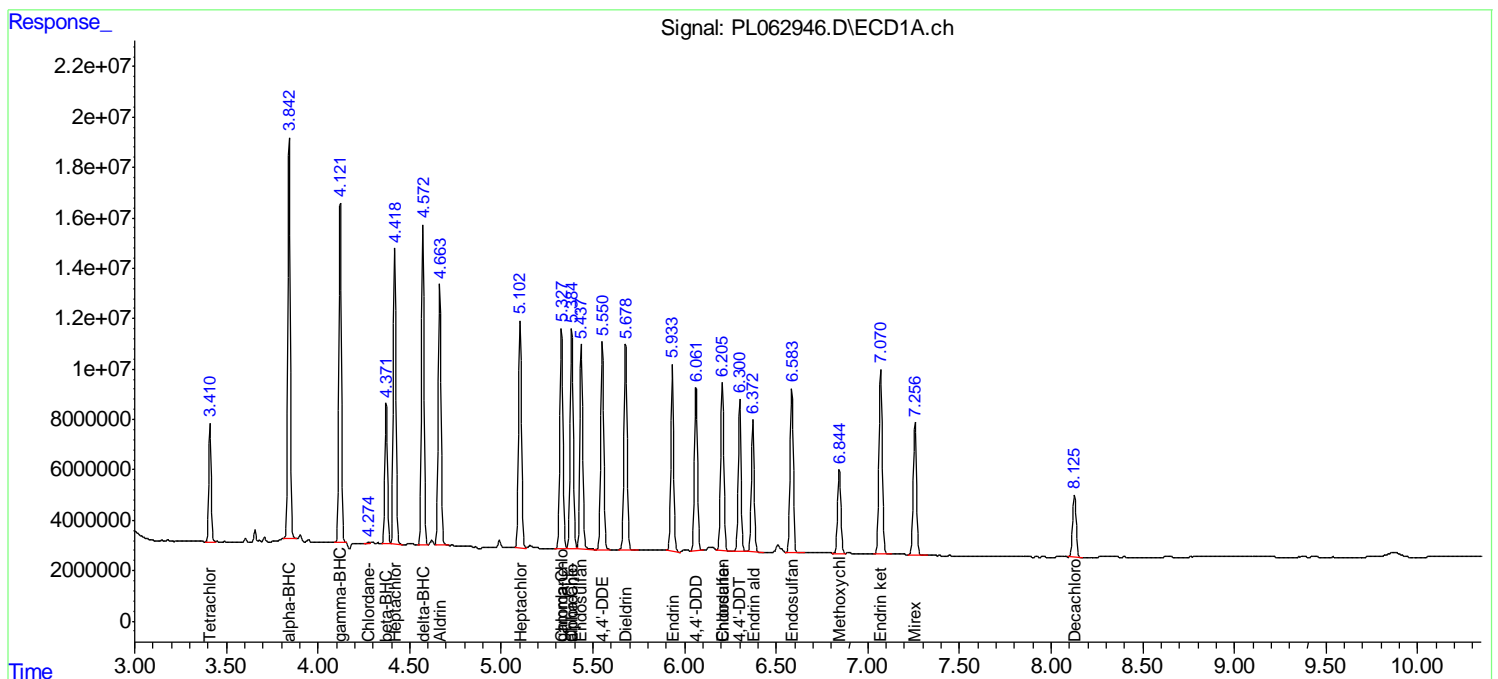
(f)=RT Delta > 1/2 Window (#)=Amounts differ by > 25% (m)=manual int.

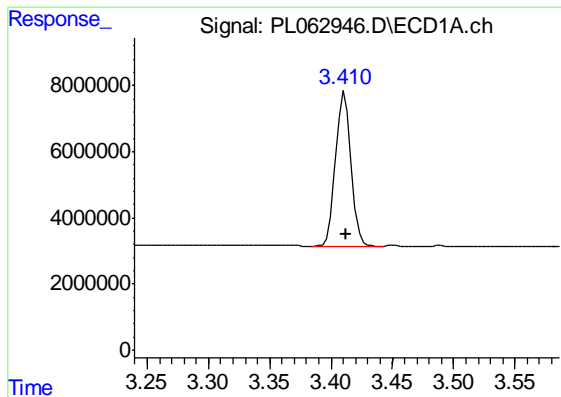
Data Path : Z:\pestpcbsrv\HPCHEM1\ECD_L\Data\PL111120\
 Data File : PL062946.D
 Signal(s) : Signal #1: ECD1A.ch Signal #2: ECD2B.ch
 Acq On : 11 Nov 2020 14:35
 Operator : DD\AJ
 Sample : L4697-07MSD
 Misc :
 ALS Vial : 14 Sample Multiplier: 1

Instrument :
 ECD_L
 Client Sampled :
 TP-2-DMSD

Integration File signal 1: autoint1.e
 Integration File signal 2: autoint2.e
 Quant Time: Nov 12 00:40:46 2020
 Quant Method : Z:\pestpcbsrv\HPCHEM1\ECD_L\methods\PL102120.M
 Quant Title : GC Extractables
 QLast Update : Thu Oct 22 04:25:31 2020
 Response via : Initial Calibration
 Integrator: ChemStation

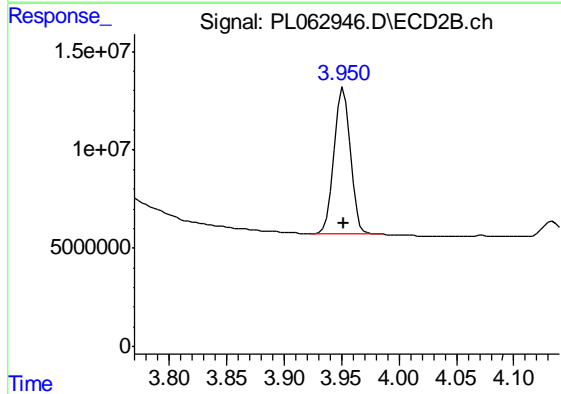
Volume Inj. : 1 µl
 Signal #1 Phase : ZB-MR2 Signal #2 Phase: ZB-MR1
 Signal #1 Info : 30M x 0.32mm x0.2 Signal #2 Info : 30M x 0.32mm x0.5µm



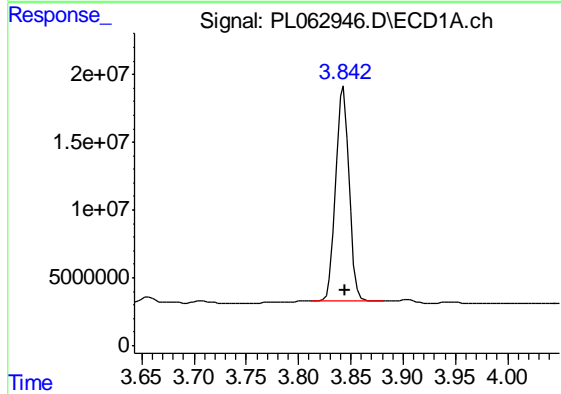


#1 Tetrachloro-m-xylene
 R.T.: 3.411 min
 Delta R.T.: 0.000 min
 Response: 40898100
 Conc: 23.78 ng/ml

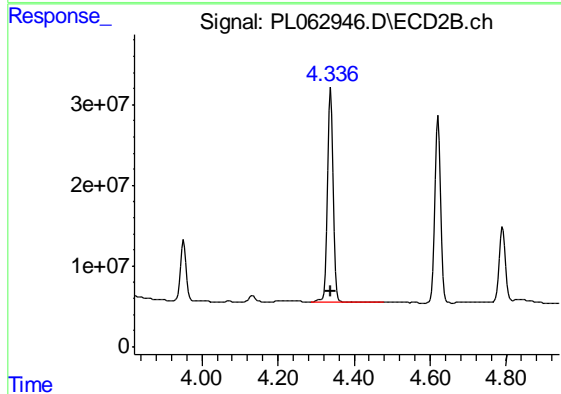
Instrument :
 ECD_L
 ClientSampleId :
 TP-2-DMSD



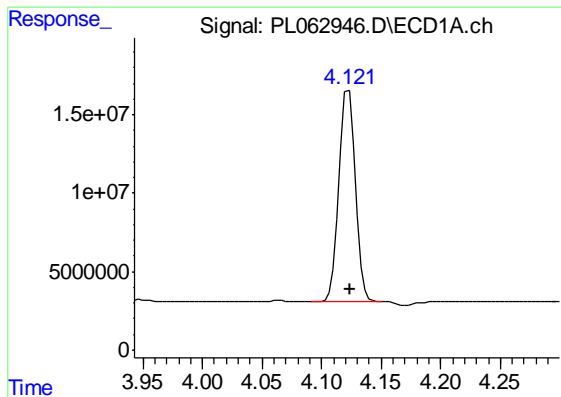
#1 Tetrachloro-m-xylene
 R.T.: 3.951 min
 Delta R.T.: 0.000 min
 Response: 74499431
 Conc: 25.35 ng/ml



#2 alpha-BHC
 R.T.: 3.843 min
 Delta R.T.: -0.001 min
 Response: 142504543
 Conc: 55.89 ng/ml



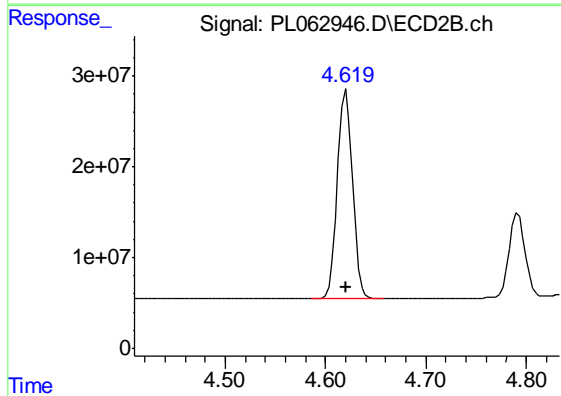
#2 alpha-BHC
 R.T.: 4.338 min
 Delta R.T.: 0.000 min
 Response: 275946333
 Conc: 62.10 ng/ml



#3 gamma-BHC (Lindane)

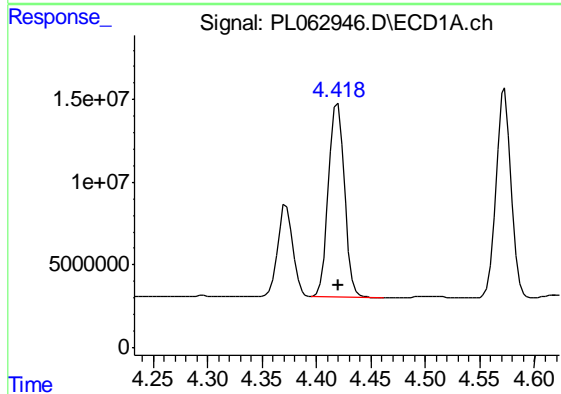
R.T.: 4.123 min
 Delta R.T.: 0.000 min
 Response: 126292015
 Conc: 54.51 ng/ml

Instrument :
 ECD_L
 ClientSampleId :
 TP-2-DMSD



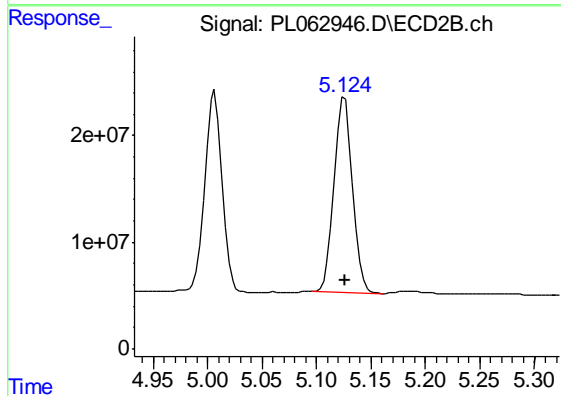
#3 gamma-BHC (Lindane)

R.T.: 4.621 min
 Delta R.T.: 0.000 min
 Response: 241332577
 Conc: 57.79 ng/ml



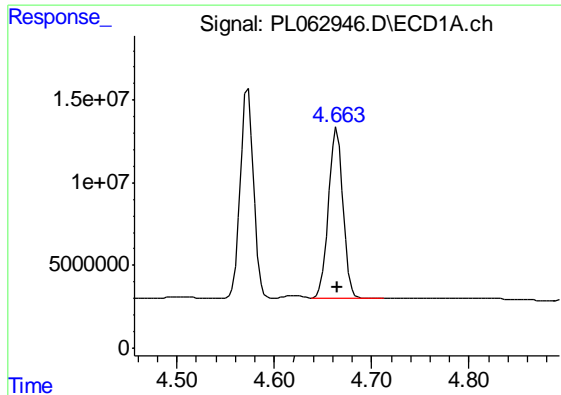
#4 Heptachlor

R.T.: 4.420 min
 Delta R.T.: 0.000 min
 Response: 119809970
 Conc: 55.83 ng/ml



#4 Heptachlor

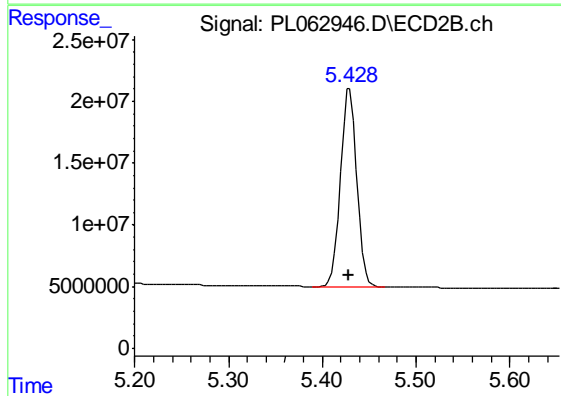
R.T.: 5.126 min
 Delta R.T.: 0.000 min
 Response: 215600059
 Conc: 54.06 ng/ml



#5 Aldrin

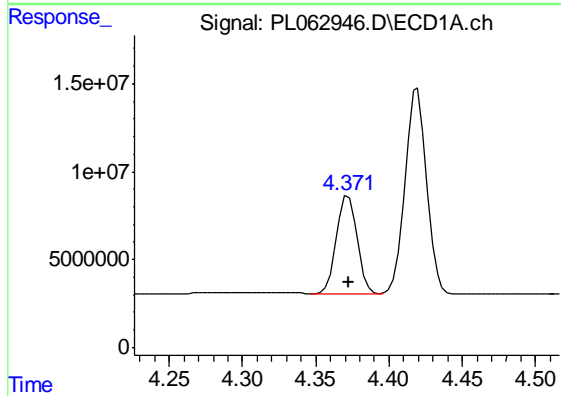
R.T.: 4.664 min
Delta R.T.: 0.000 min
Response: 108050401
Conc: 56.61 ng/ml

Instrument :
ECD_L
ClientSampleId :
TP-2-DMSD



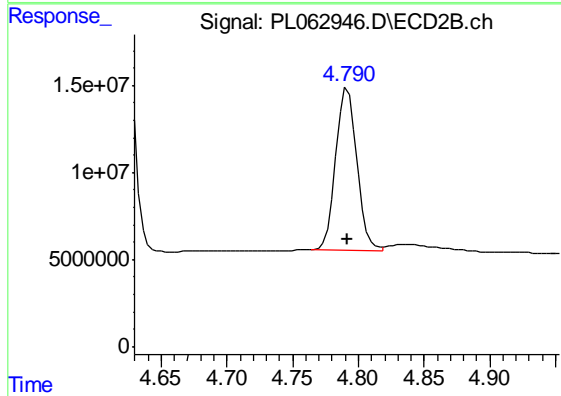
#5 Aldrin

R.T.: 5.429 min
Delta R.T.: 0.000 min
Response: 195357525
Conc: 53.97 ng/ml



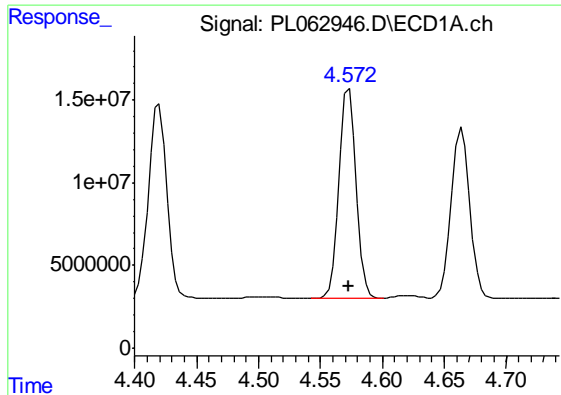
#6 beta-BHC

R.T.: 4.372 min
Delta R.T.: 0.000 min
Response: 53893120
Conc: 56.42 ng/ml



#6 beta-BHC

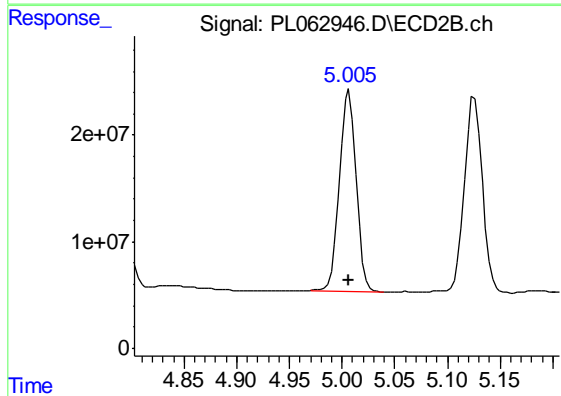
R.T.: 4.792 min
Delta R.T.: 0.000 min
Response: 103803560
Conc: 55.13 ng/ml



#7 delta-BHC

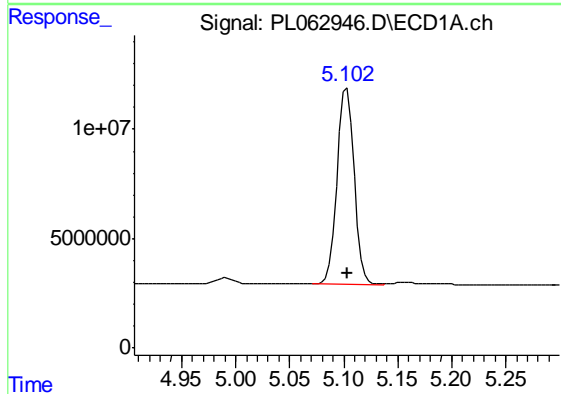
R.T.: 4.573 min
 Delta R.T.: 0.000 min
 Response: 121779202
 Conc: 56.04 ng/ml

Instrument :
 ECD_L
 ClientSampleId :
 TP-2-DMSD



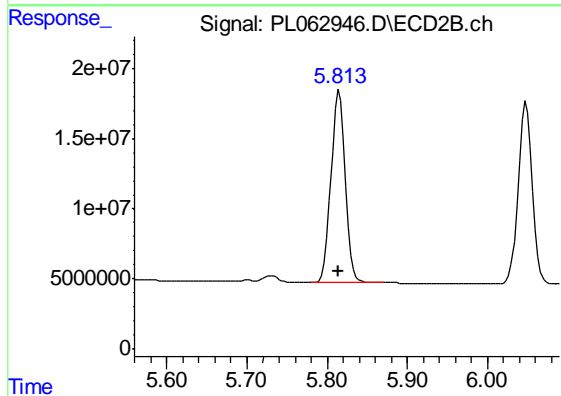
#7 delta-BHC

R.T.: 5.007 min
 Delta R.T.: 0.000 min
 Response: 207274127
 Conc: 59.23 ng/ml



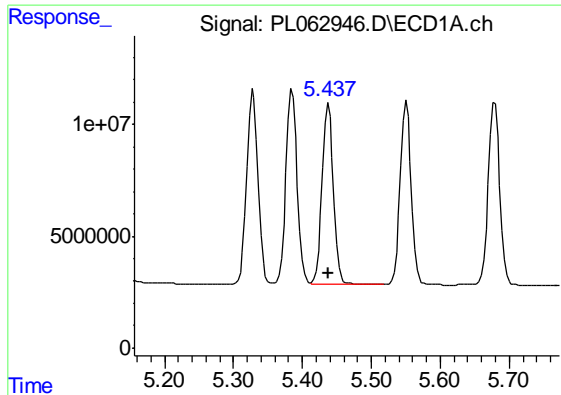
#8 Heptachlor epoxide

R.T.: 5.103 min
 Delta R.T.: 0.000 min
 Response: 99776083
 Conc: 54.68 ng/ml



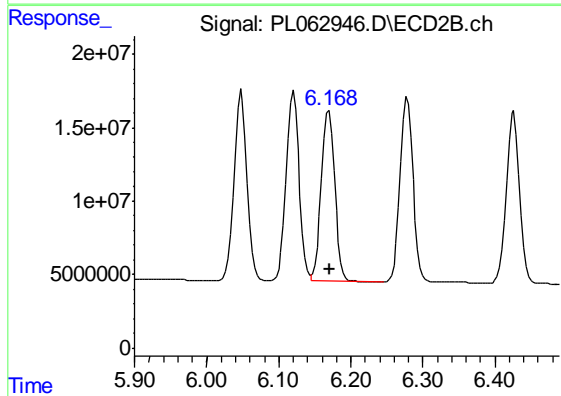
#8 Heptachlor epoxide

R.T.: 5.815 min
 Delta R.T.: 0.000 min
 Response: 168875806
 Conc: 52.14 ng/ml

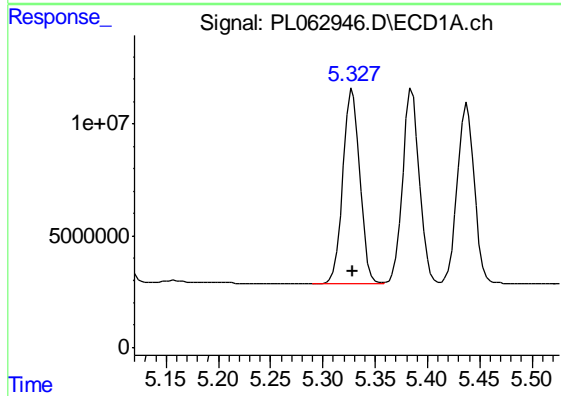


#9 Endosulfan I
 R.T.: 5.438 min
 Delta R.T.: 0.000 min
 Response: 91594570
 Conc: 54.79 ng/ml

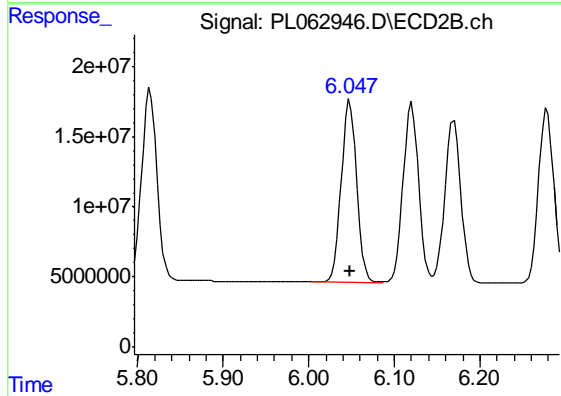
Instrument :
 ECD_L
 ClientSampled :
 TP-2-DMSD



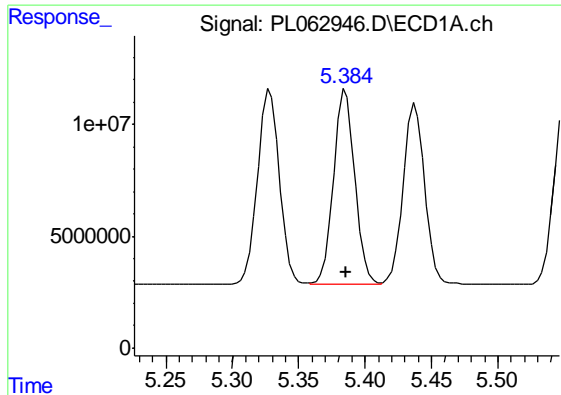
#9 Endosulfan I
 R.T.: 6.170 min
 Delta R.T.: 0.000 min
 Response: 151034241
 Conc: 47.89 ng/ml



#10 gamma-Chlordane
 R.T.: 5.328 min
 Delta R.T.: 0.000 min
 Response: 98281742
 Conc: 54.55 ng/ml



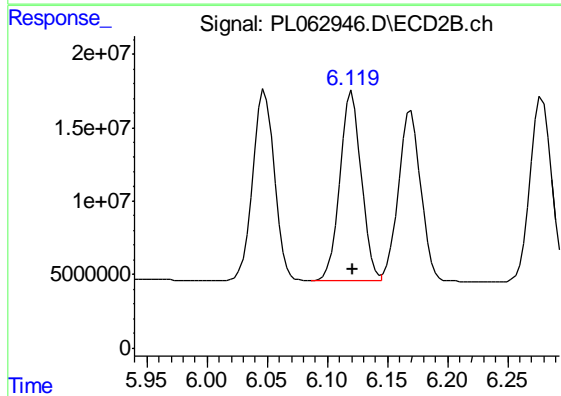
#10 gamma-Chlordane
 R.T.: 6.048 min
 Delta R.T.: 0.000 min
 Response: 161418405
 Conc: 47.95 ng/ml



#11 alpha-Chlordane

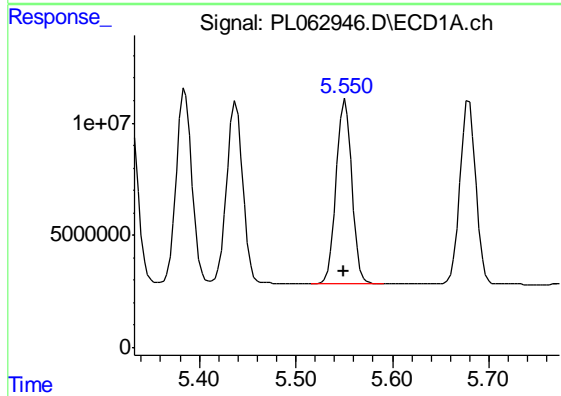
R.T.: 5.385 min
 Delta R.T.: 0.000 min
 Response: 97676461
 Conc: 54.03 ng/ml

Instrument :
 ECD_L
 ClientSampleId :
 TP-2-DMSD



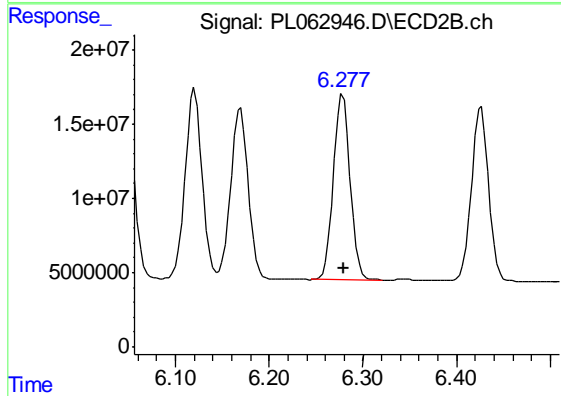
#11 alpha-Chlordane

R.T.: 6.121 min
 Delta R.T.: 0.000 min
 Response: 161222997
 Conc: 47.86 ng/ml



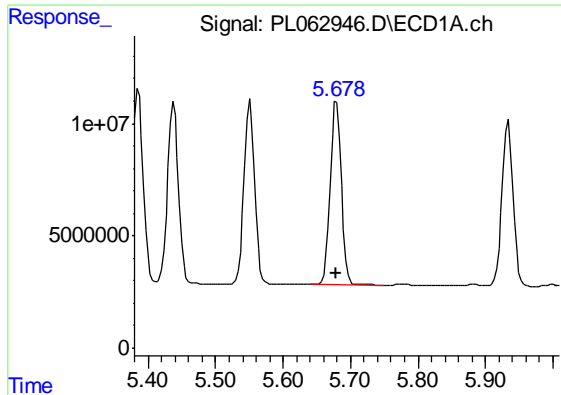
#12 4,4'-DDE

R.T.: 5.551 min
 Delta R.T.: 0.000 min
 Response: 90272673
 Conc: 54.56 ng/ml



#12 4,4'-DDE

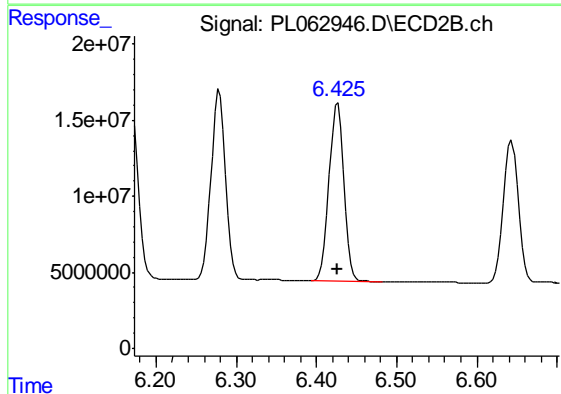
R.T.: 6.279 min
 Delta R.T.: 0.000 min
 Response: 155934044
 Conc: 48.40 ng/ml



#13 Dieldrin

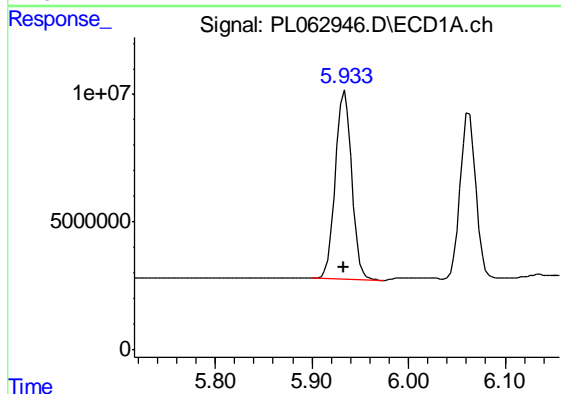
R.T.: 5.679 min
 Delta R.T.: 0.000 min
 Response: 93884188
 Conc: 53.13 ng/ml

Instrument :
 ECD_L
 ClientSampleId :
 TP-2-DMSD



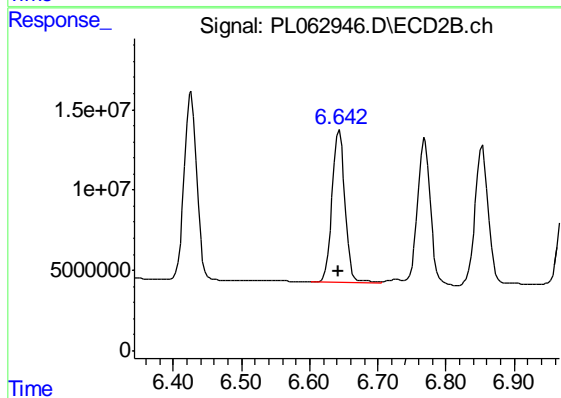
#13 Dieldrin

R.T.: 6.426 min
 Delta R.T.: 0.000 min
 Response: 149985150
 Conc: 46.86 ng/ml



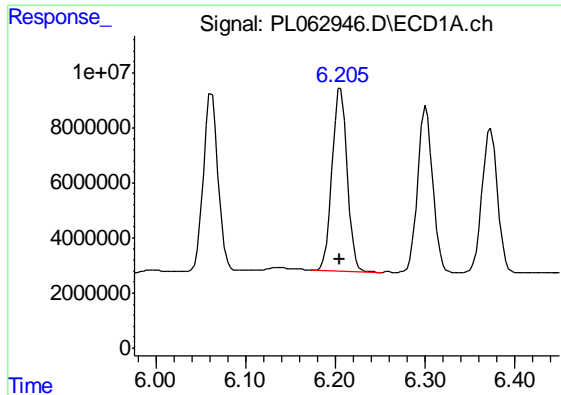
#14 Endrin

R.T.: 5.934 min
 Delta R.T.: 0.000 min
 Response: 84834861
 Conc: 50.99 ng/ml



#14 Endrin

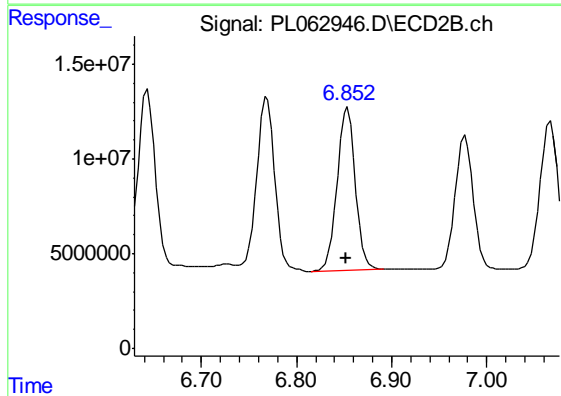
R.T.: 6.644 min
 Delta R.T.: 0.000 min
 Response: 125271885
 Conc: 44.88 ng/ml



#15 Endosulfan II

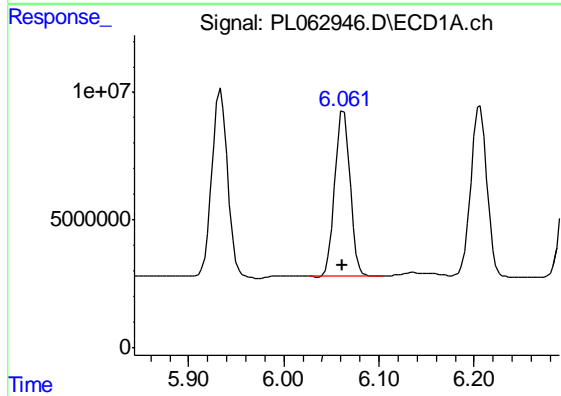
R.T.: 6.206 min
 Delta R.T.: 0.001 min
 Response: 77801187
 Conc: 47.19 ng/ml

Instrument :
 ECD_L
 ClientSampleId :
 TP-2-DMSD



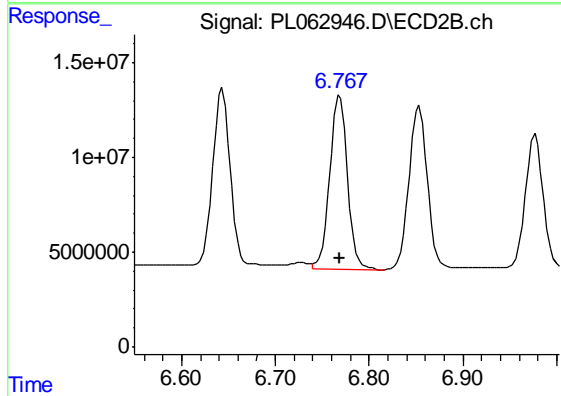
#15 Endosulfan II

R.T.: 6.854 min
 Delta R.T.: 0.000 min
 Response: 115391822
 Conc: 40.37 ng/ml



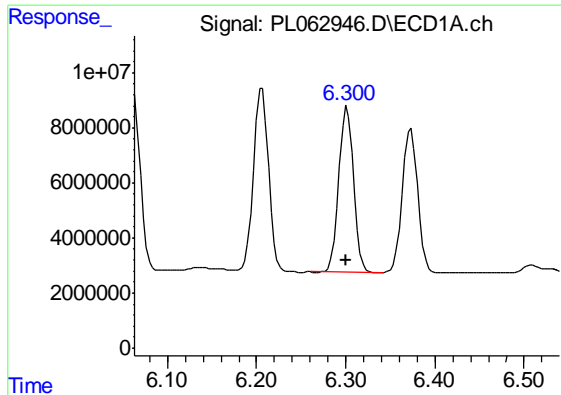
#16 4,4'-DDD

R.T.: 6.063 min
 Delta R.T.: 0.000 min
 Response: 72901467
 Conc: 51.54 ng/ml



#16 4,4'-DDD

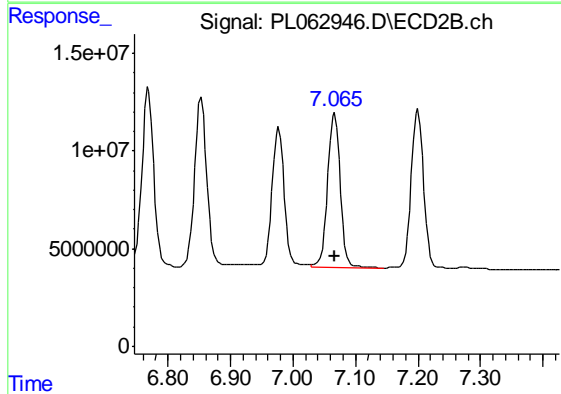
R.T.: 6.769 min
 Delta R.T.: 0.000 min
 Response: 121010368
 Conc: 47.27 ng/ml



#17 4,4'-DDT

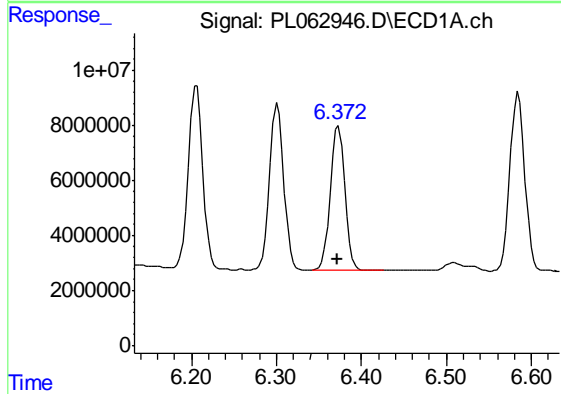
R.T.: 6.301 min
 Delta R.T.: 0.000 min
 Response: 69637061
 Conc: 52.18 ng/ml

Instrument :
 ECD_L
 ClientSampleId :
 TP-2-DMSD



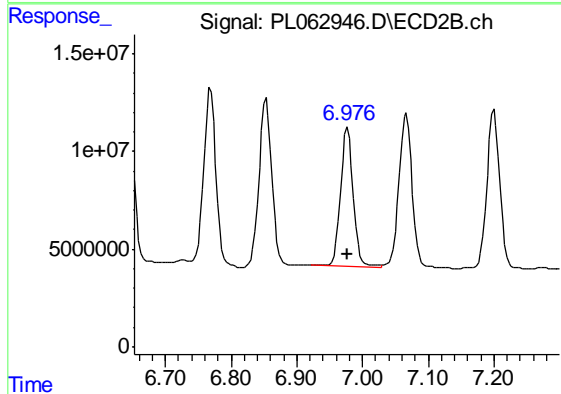
#17 4,4'-DDT

R.T.: 7.067 min
 Delta R.T.: 0.000 min
 Response: 110305555
 Conc: 49.13 ng/ml



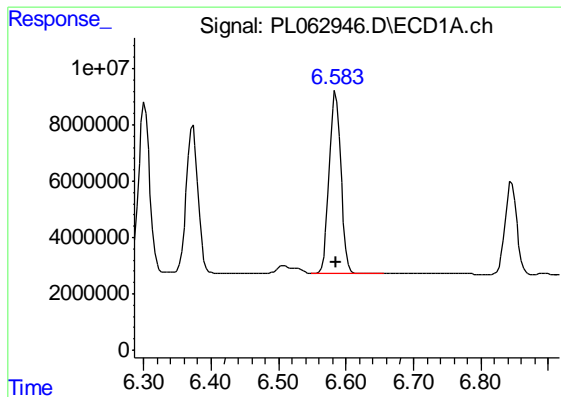
#18 Endrin aldehyde

R.T.: 6.373 min
 Delta R.T.: 0.001 min
 Response: 63281790
 Conc: 43.58 ng/ml



#18 Endrin aldehyde

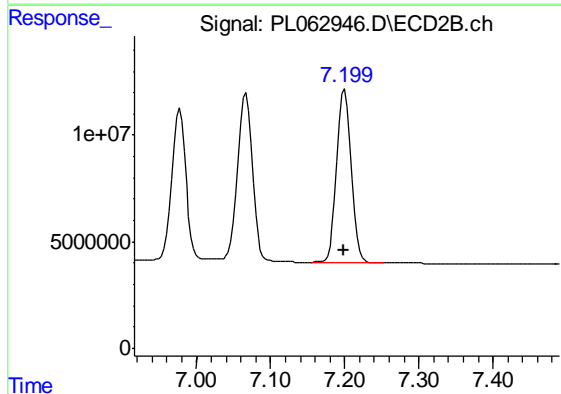
R.T.: 6.977 min
 Delta R.T.: 0.000 min
 Response: 95334534
 Conc: 41.80 ng/ml



#19 Endosulfan Sulfate

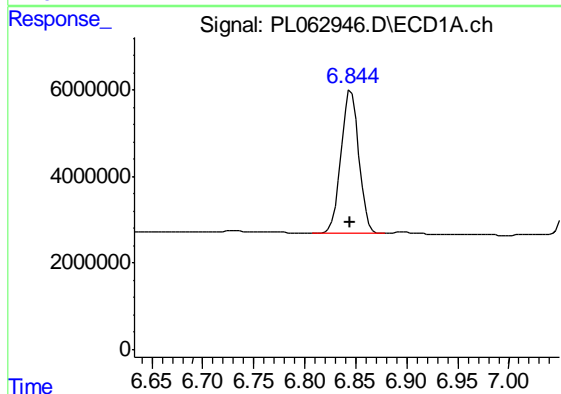
R.T.: 6.585 min
 Delta R.T.: 0.000 min
 Response: 78859763
 Conc: 47.79 ng/ml

Instrument :
 ECD_L
 ClientSampleId :
 TP-2-DMSD



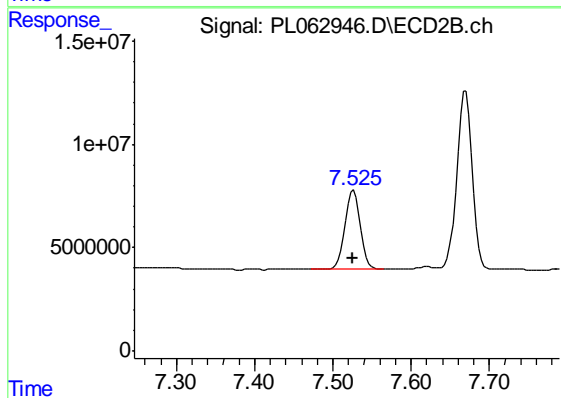
#19 Endosulfan Sulfate

R.T.: 7.200 min
 Delta R.T.: 0.000 min
 Response: 109356358
 Conc: 45.58 ng/ml



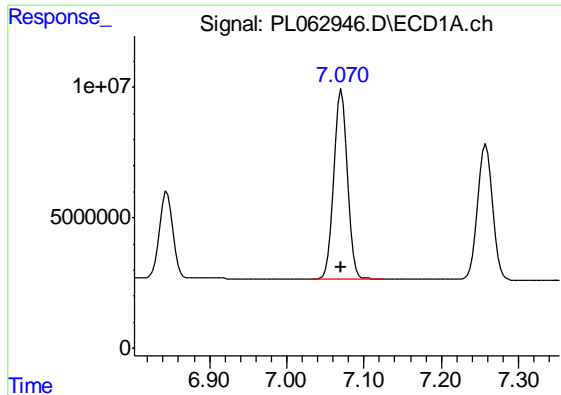
#20 Methoxychlor

R.T.: 6.845 min
 Delta R.T.: 0.000 min
 Response: 39890553
 Conc: 46.31 ng/ml



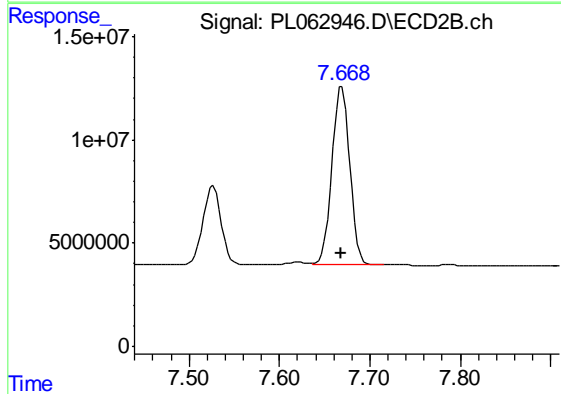
#20 Methoxychlor

R.T.: 7.527 min
 Delta R.T.: 0.001 min
 Response: 53517787
 Conc: 43.32 ng/ml

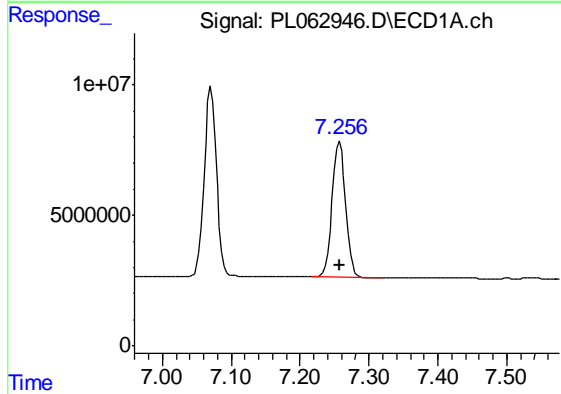


#21 Endrin ketone
 R.T.: 7.071 min
 Delta R.T.: 0.000 min
 Response: 89042298
 Conc: 49.39 ng/ml

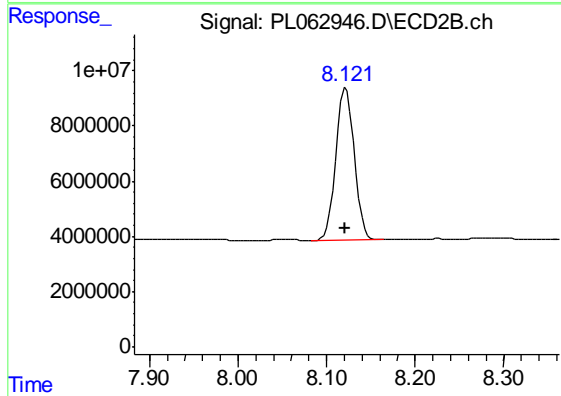
Instrument :
 ECD_L
 ClientSampleId :
 TP-2-DMSD



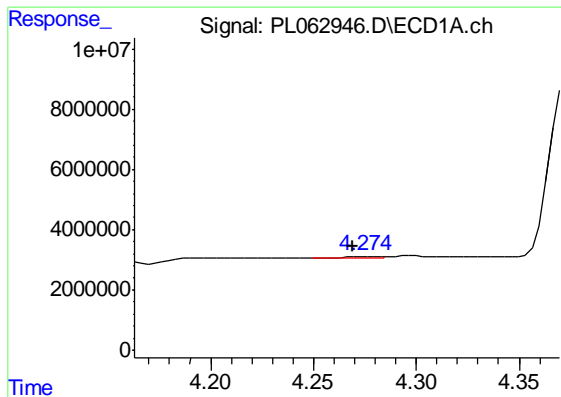
#21 Endrin ketone
 R.T.: 7.669 min
 Delta R.T.: 0.001 min
 Response: 118362698
 Conc: 49.95 ng/ml



#22 Mirex
 R.T.: 7.257 min
 Delta R.T.: 0.000 min
 Response: 70519597
 Conc: 49.74 ng/ml



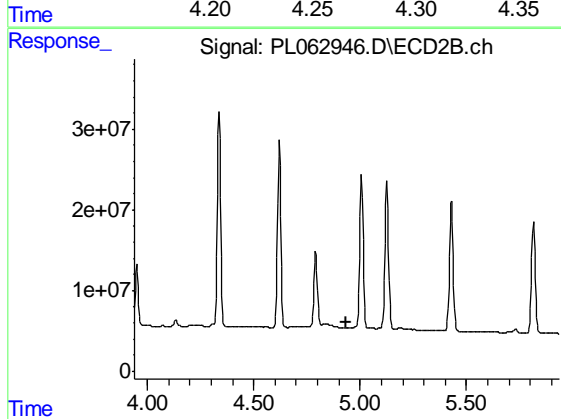
#22 Mirex
 R.T.: 8.122 min
 Delta R.T.: 0.000 min
 Response: 80391030
 Conc: 47.18 ng/ml



#23 Chlordane-1

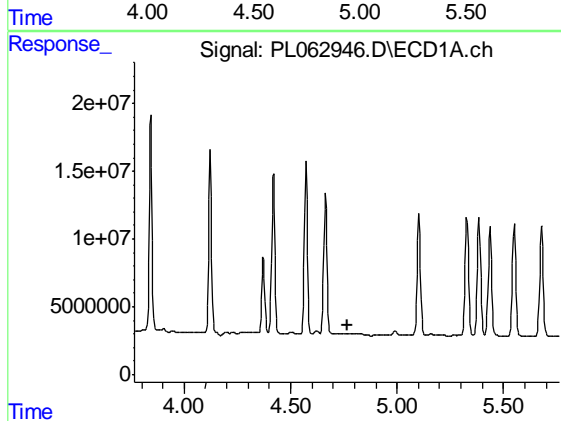
R.T.: 4.275 min
 Delta R.T.: 0.006 min
 Response: 502813
 Conc: 9.75 ng/ml

Instrument :
 ECD_L
 ClientSampled :
 TP-2-DMSD



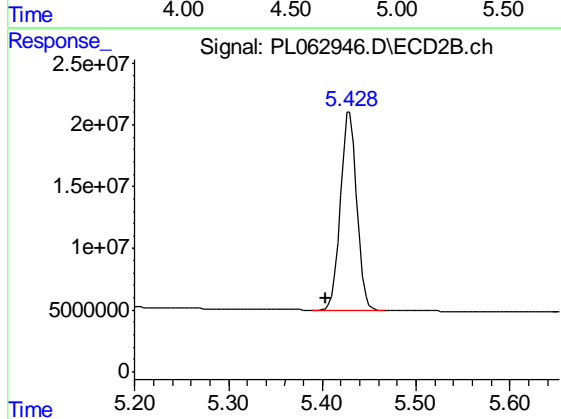
#23 Chlordane-1

R.T.: 0.000 min
 Exp R.T. : 4.938 min
 Response: 0
 Conc: N.D.



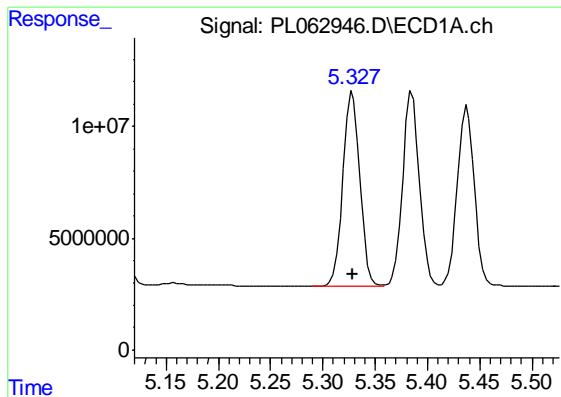
#24 Chlordane-2

R.T.: 0.000 min
 Exp R.T. : 4.765 min
 Response: 0
 Conc: N.D.



#24 Chlordane-2

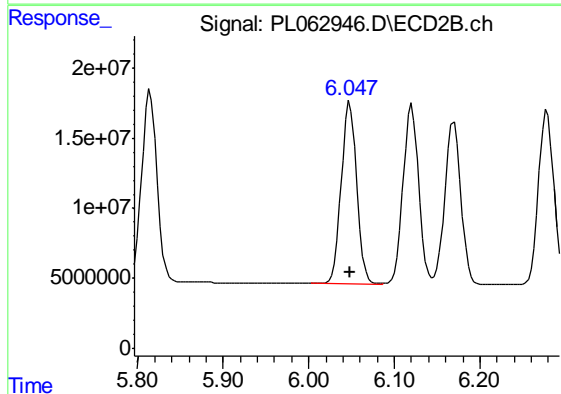
R.T.: 5.429 min
 Delta R.T.: 0.026 min
 Response: 195357525
 Conc: 1791.68 ng/ml



#25 Chlordane-3

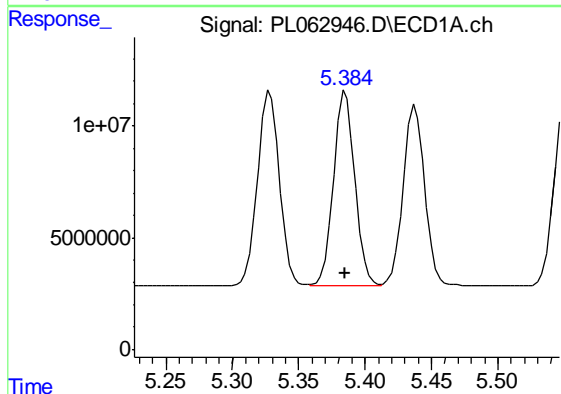
R.T.: 5.328 min
 Delta R.T.: 0.000 min
 Response: 98281742
 Conc: 641.82 ng/ml

Instrument :
 ECD_L
 ClientSampleId :
 TP-2-DMSD



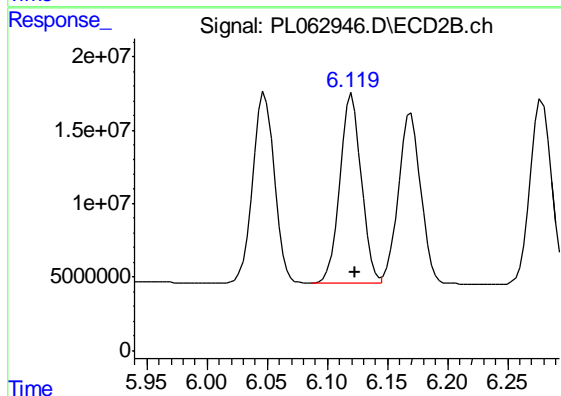
#25 Chlordane-3

R.T.: 6.048 min
 Delta R.T.: 0.000 min
 Response: 161418405
 Conc: 399.61 ng/ml



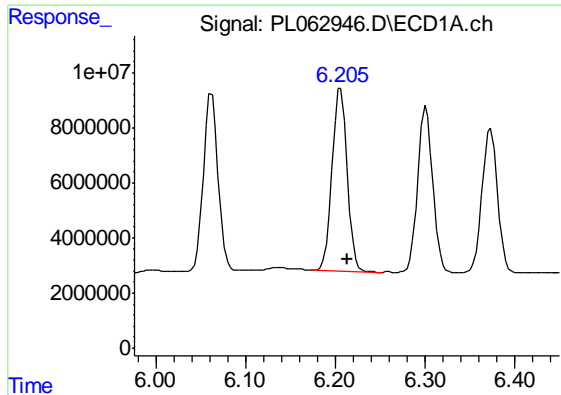
#26 Chlordane-4

R.T.: 5.385 min
 Delta R.T.: 0.000 min
 Response: 97676461
 Conc: 749.85 ng/ml



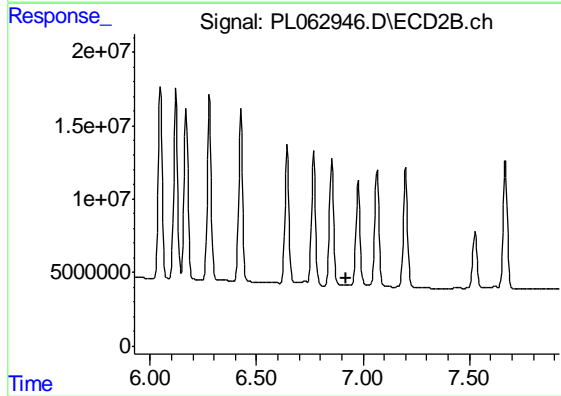
#26 Chlordane-4

R.T.: 6.121 min
 Delta R.T.: -0.002 min
 Response: 161222997
 Conc: 332.91 ng/ml

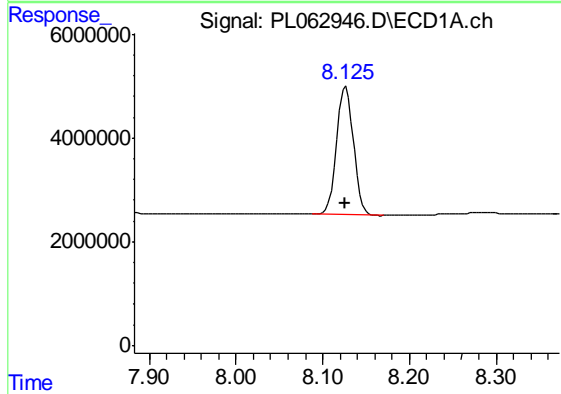


#27 Chlordane-5
 R.T.: 6.206 min
 Delta R.T.: -0.007 min
 Response: 77801187
 Conc: 1612.61 ng/ml

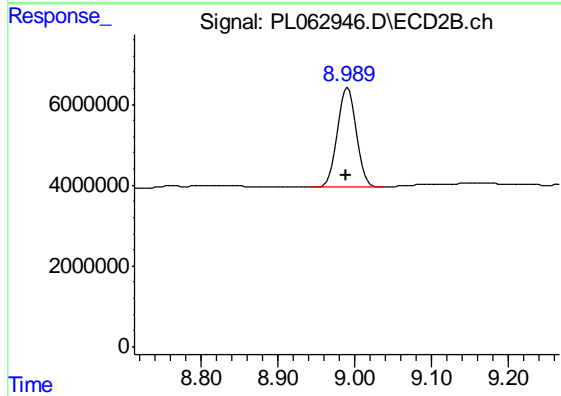
Instrument :
 ECD_L
 ClientSampleId :
 TP-2-DMSD



#27 Chlordane-5
 R.T.: 0.000 min
 Exp R.T. : 6.923 min
 Response: 0
 Conc: N.D.



#28 Decachlorobiphenyl
 R.T.: 8.127 min
 Delta R.T.: 0.000 min
 Response: 33564767
 Conc: 20.92 ng/ml



#28 Decachlorobiphenyl
 R.T.: 8.991 min
 Delta R.T.: 0.002 min
 Response: 41957478
 Conc: 20.05 ng/ml