

Data Path : Z:\pestpcbsrv\HPCHEM1\ECD_L\Data\PL111124\
 Data File : PL092951.D
 Signal(s) : Signal #1: ECD1A.ch Signal #2: ECD2B.ch
 Acq On : 11 Nov 2024 13:53
 Operator : AR\AJ
 Sample : PB164859BL
 Misc :
 ALS Vial : 12 Sample Multiplier: 1

Instrument :
 ECD_L
 ClientSampleId :
 PB164859BL

Integration File signal 1: autoint1.e
 Integration File signal 2: autoint2.e
 Quant Time: Nov 11 23:53:33 2024
 Quant Method : Z:\pestpcbsrv\HPCHEM1\ECD_L\methods\PL102824.M
 Quant Title : GC Extractables
 QLast Update : Mon Oct 28 18:58:23 2024
 Response via : Initial Calibration
 Integrator: ChemStation

Volume Inj. : 1 µl
 Signal #1 Phase : ZB-MR2 Signal #2 Phase: ZB-MR1
 Signal #1 Info : 30M x 0.32mm x0.2 Signal #2 Info : 30M x 0.32mm x0.5µm

Compound	RT#1	RT#2	Resp#1	Resp#2	ng/ml	ng/ml

System Monitoring Compounds						
1) SA Tetrachlo...	3.542	2.778	50860238	54871686	20.757	20.165
28) SA Decachlor...	9.062	7.919	40768947	57889532	21.184	21.211

Target Compounds

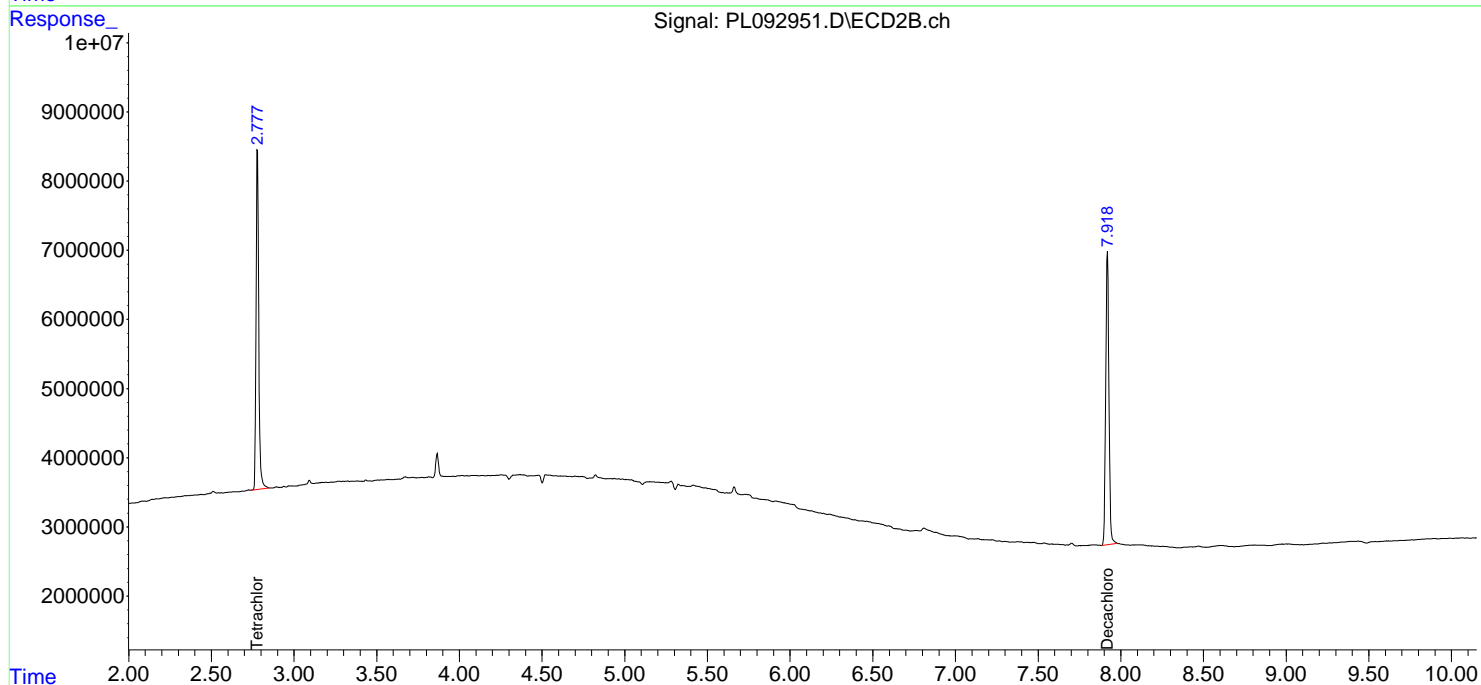
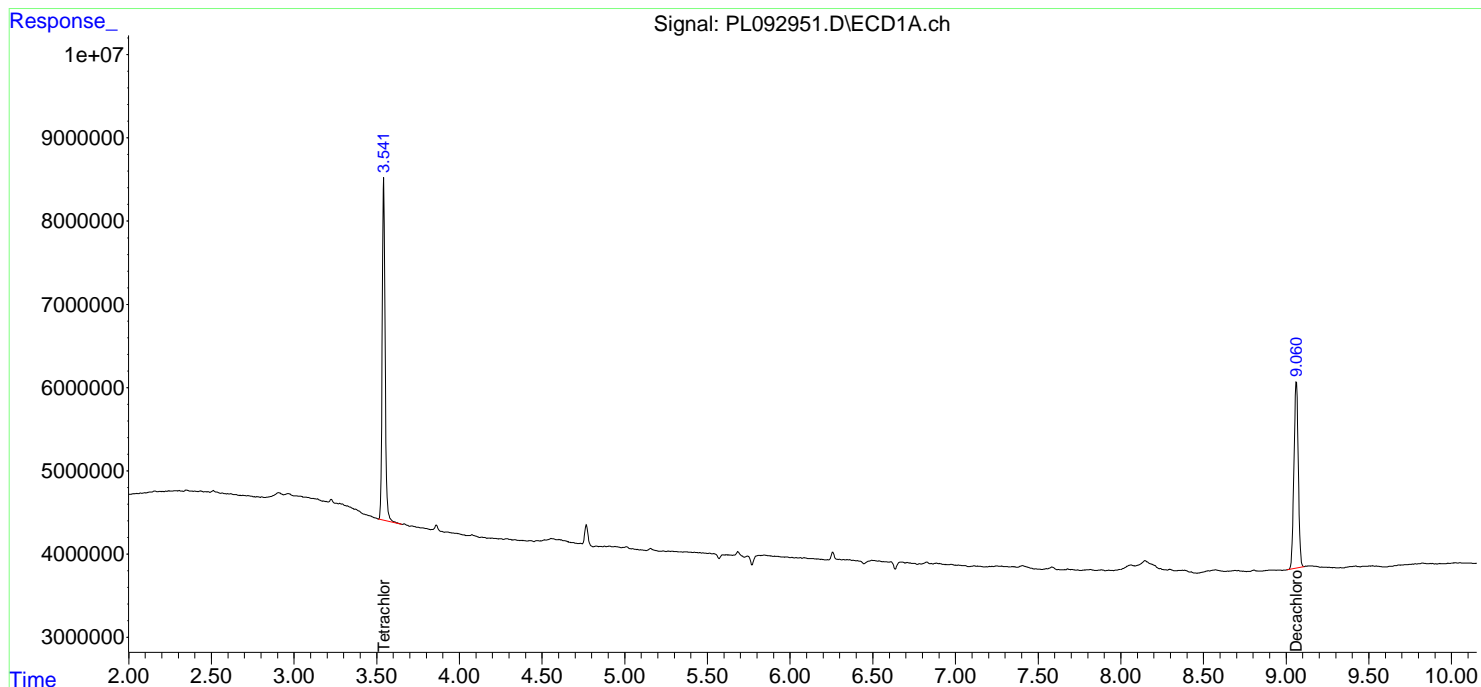
(f)=RT Delta > 1/2 Window (#)=Amounts differ by > 25% (m)=manual int.

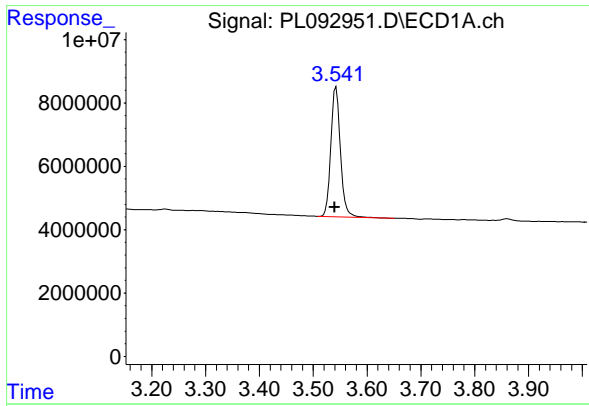
Data Path : Z:\pestpcbsrv\HPCHEM1\ECD_L\Data\PL111124\
 Data File : PL092951.D
 Signal(s) : Signal #1: ECD1A.ch Signal #2: ECD2B.ch
 Acq On : 11 Nov 2024 13:53
 Operator : AR\AJ
 Sample : PB164859BL
 Misc :
 ALS Vial : 12 Sample Multiplier: 1

Instrument :
 ECD_L
 ClientSampleId :
 PB164859BL

Integration File signal 1: autoint1.e
 Integration File signal 2: autoint2.e
 Quant Time: Nov 11 23:53:33 2024
 Quant Method : Z:\pestpcbsrv\HPCHEM1\ECD_L\methods\PL102824.M
 Quant Title : GC Extractables
 QLast Update : Mon Oct 28 18:58:23 2024
 Response via : Initial Calibration
 Integrator: ChemStation

Volume Inj. : 1 µl
 Signal #1 Phase : ZB-MR2 Signal #2 Phase: ZB-MR1
 Signal #1 Info : 30M x 0.32mm x0.2 Signal #2 Info : 30M x 0.32mm x0.5µm

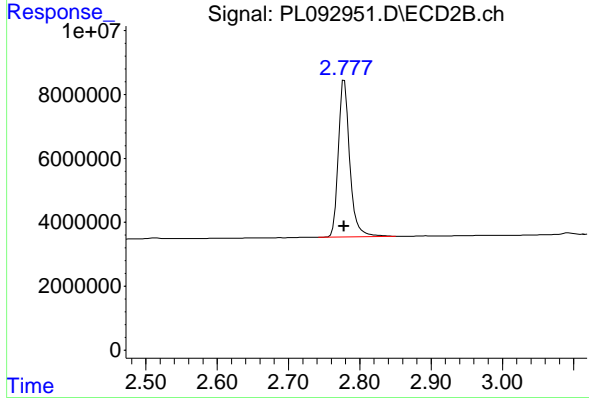




#1 Tetrachloro-m-xylene

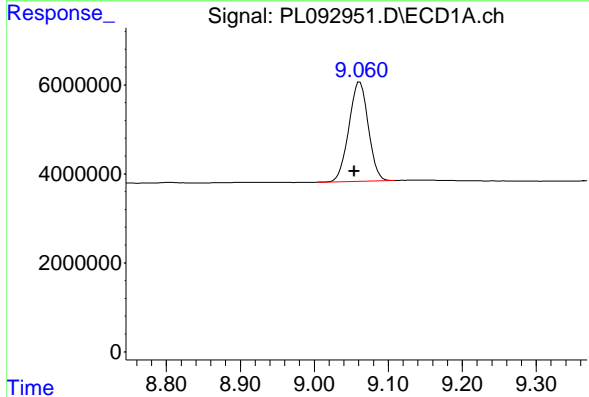
R.T.: 3.542 min
 Delta R.T.: 0.002 min
 Response: 50860238
 Conc: 20.76 ng/ml

Instrument :
 ECD_L
 ClientSampleId :
 PB164859BL



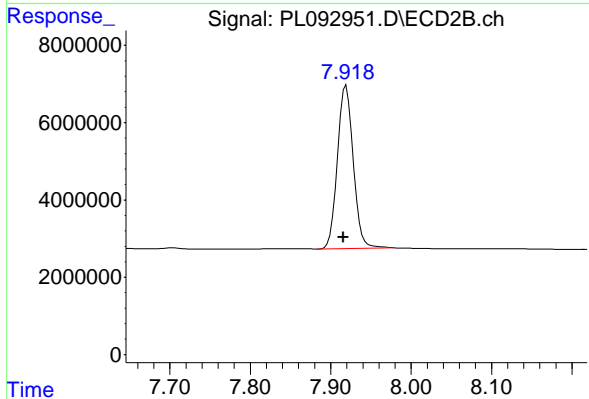
#1 Tetrachloro-m-xylene

R.T.: 2.778 min
 Delta R.T.: 0.000 min
 Response: 54871686
 Conc: 20.16 ng/ml



#28 Decachlorobiphenyl

R.T.: 9.062 min
 Delta R.T.: 0.008 min
 Response: 40768947
 Conc: 21.18 ng/ml



#28 Decachlorobiphenyl

R.T.: 7.919 min
 Delta R.T.: 0.003 min
 Response: 57889532
 Conc: 21.21 ng/ml