

Data Path : Z:\pestpcbsrv\HPCHEM1\ECD_L\Data\PL111218\
 Data File : PL042048.D
 Signal(s) : Signal #1: ECD1A.ch Signal #2: ECD2B.ch
 Acq On : 12 Nov 2018 14:06
 Operator : AJ\SJ
 Sample : J5877-03RE
 Misc :
 ALS Vial : 5 Sample Multiplier: 1

Instrument :
 ECD_L
 ClientSampleId :

Integration File signal 1: autoint1.e
 Integration File signal 2: autoint2.e
 Quant Time: Nov 13 03:34:42 2018
 Quant Method : Z:\pestpcbsrv\HPCHEM1\ECD_L\methods\PL110918.M
 Quant Title : GC Extractables
 QLast Update : Fri Nov 09 12:38:40 2018
 Response via : Initial Calibration
 Integrator: ChemStation

Volume Inj. : 2 µl
 Signal #1 Phase : ZB-MR2 Signal #2 Phase: ZB-MR2
 Signal #1 Info : 30M x 0.32mm x0.5 Signal #2 Info : 30M x 0.32mm x0.25µm

	Compound	RT#1	RT#2	Resp#1	Resp#2	ng/ml	ng/ml

System Monitoring Compounds							
1)	SA Tetrachlo...	3.469	4.102	86000965	39605809	13.927	13.368
2)	SA Decachlor...	8.207	9.231	44267980	16670943	6.462	6.536
Target Compounds							
2)	A alpha-BHC	3.906	4.518	4834455	1352399	0.510	0.305 #
6)	B beta-BHC	4.403f	0.000	3092310	0	0.838	N.D. #
7)	B delta-BHC	0.000	5.163	0	6179140	N.D.	1.563 #
8)	B Heptachlo...	5.229f	5.995	3733174	3629710	0.473	1.010 #
9)	A Endosulfan I	5.540	6.311f	942417	1431126	0.129	0.439 #
10)	B gamma-Chl...	5.402	6.248	3509220	4315177	0.435	1.217 #
11)	B alpha-Chl...	5.461	6.311	2719649	1431126	0.341	0.411
12)	B 4,4'-DDE	5.626	0.000	2089060	0	0.305	N.D. #
15)	B Endosulfa...	6.229f	7.045	1778726	539252	0.261	0.181 #
16)	A 4,4'-DDD	6.142	0.000	605531	0	0.110	N.D. #
21)	B Endrin ke...	7.203f	0.000	1757290	0	0.244	N.D. #
23)	Chlordane-1	4.360	5.163	1883727	6179140	6.312	42.916 #
25)	Chlordane-3	5.402	6.248	3509220	4315177	3.753	8.450 #
26)	Chlordane-4	5.461	6.311	2719649	1431126	3.255	2.397 #
27)	Chlordane-5	6.229	0.000	1778726	0	6.790	N.D. #

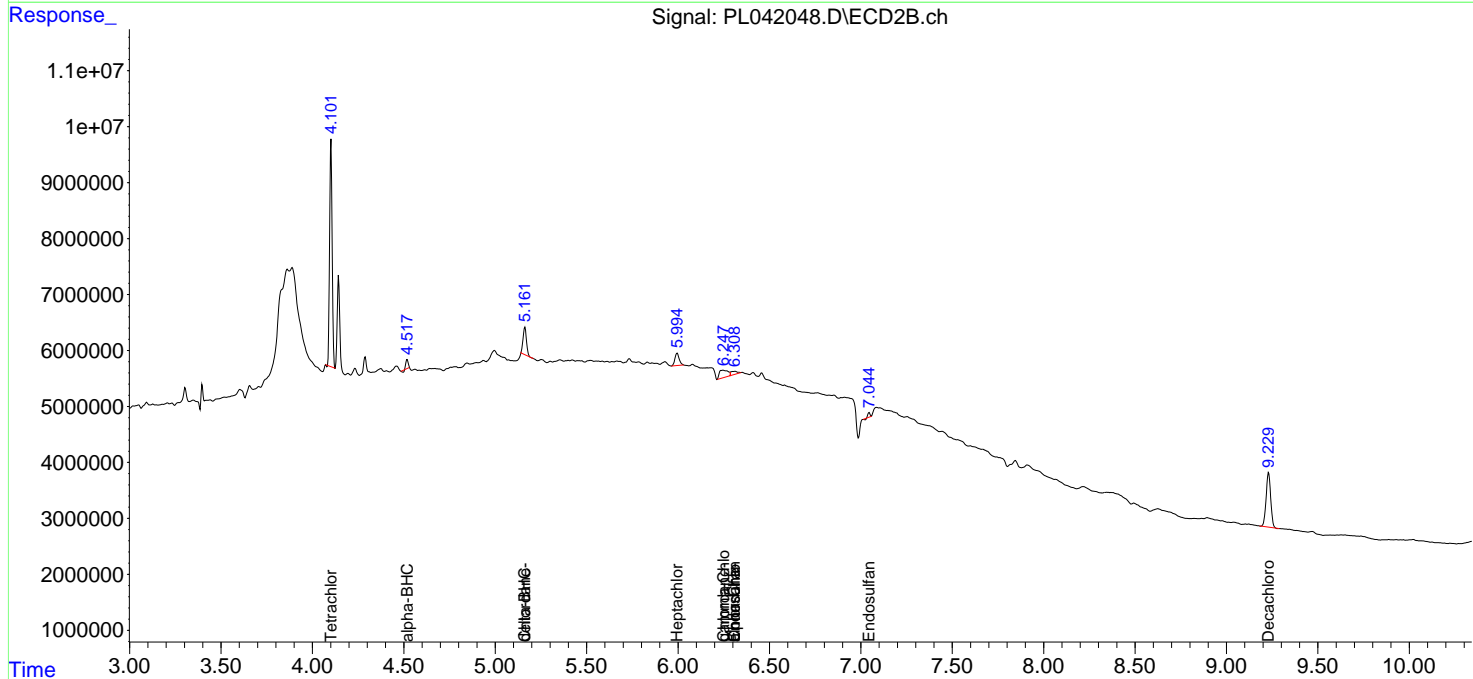
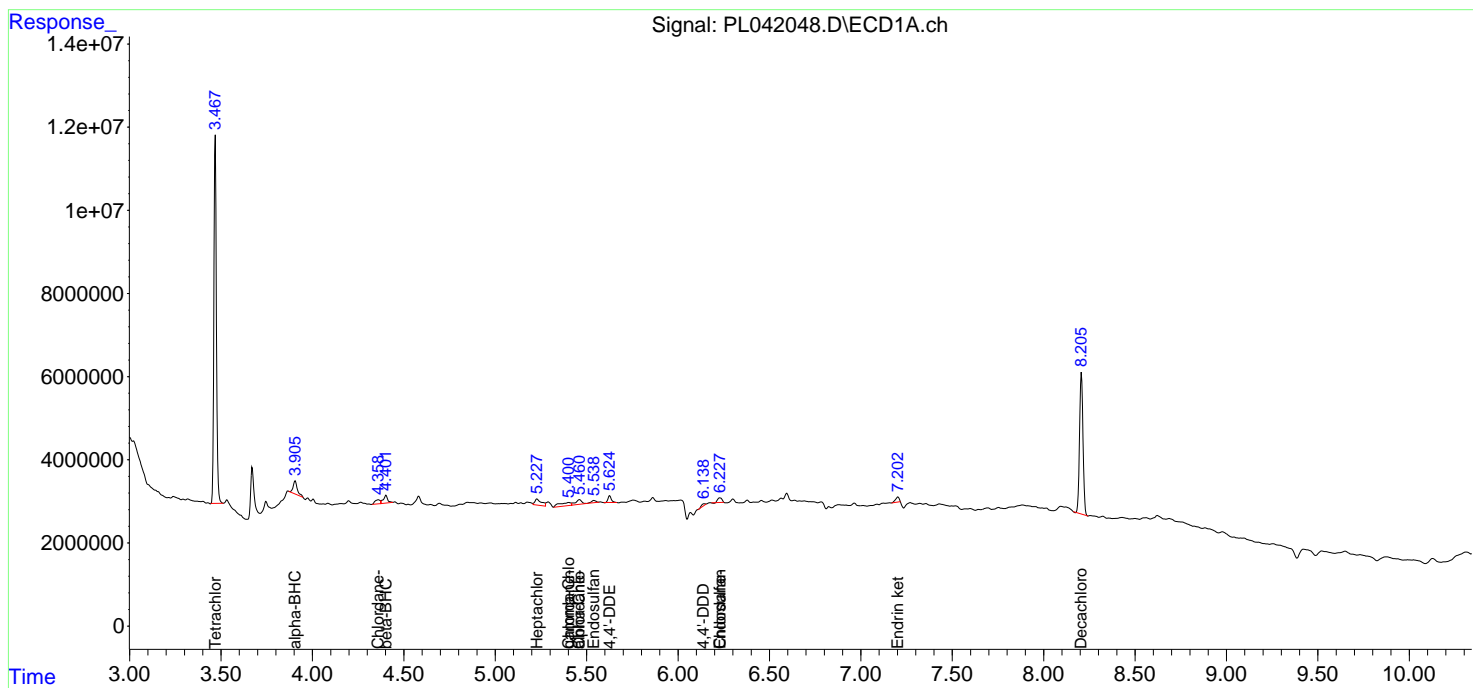
(f)=RT Delta > 1/2 Window (#)=Amounts differ by > 25% (m)=manual int.

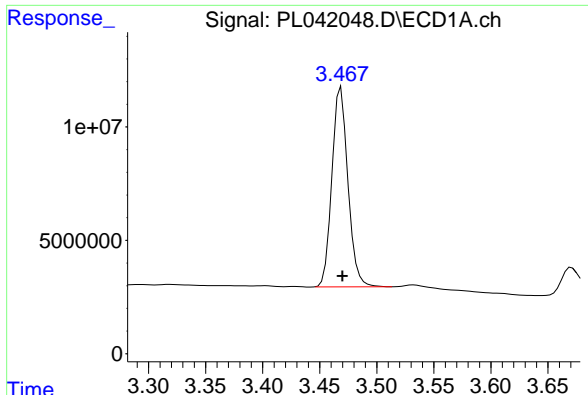
Data Path : Z:\pestpcbsrv\HPCHEM1\ECD_L\Data\PL111218\
 Data File : PL042048.D
 Signal(s) : Signal #1: ECD1A.ch Signal #2: ECD2B.ch
 Acq On : 12 Nov 2018 14:06
 Operator : AJ\SJ
 Sample : J5877-03RE
 Misc :
 ALS Vial : 5 Sample Multiplier: 1

Instrument :
 ECD_L
 ClientSampled :

Integration File signal 1: autoint1.e
 Integration File signal 2: autoint2.e
 Quant Time: Nov 13 03:34:42 2018
 Quant Method : Z:\pestpcbsrv\HPCHEM1\ECD_L\methods\PL110918.M
 Quant Title : GC Extractables
 QLast Update : Fri Nov 09 12:38:40 2018
 Response via : Initial Calibration
 Integrator: ChemStation

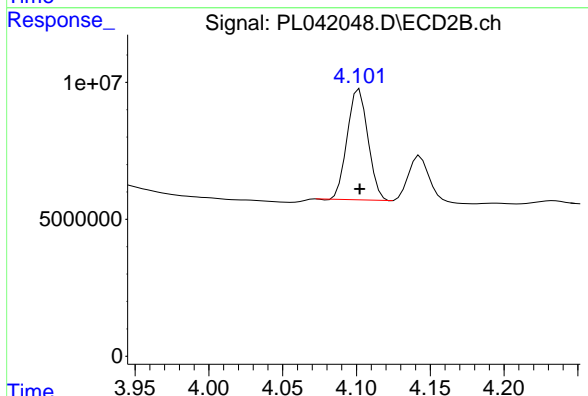
Volume Inj. : 2 µl
 Signal #1 Phase : ZB-MR1 Signal #2 Phase: ZB-MR2
 Signal #1 Info : 30M x 0.32mm x0.5 Signal #2 Info : 30M x 0.32mm x0.25µm



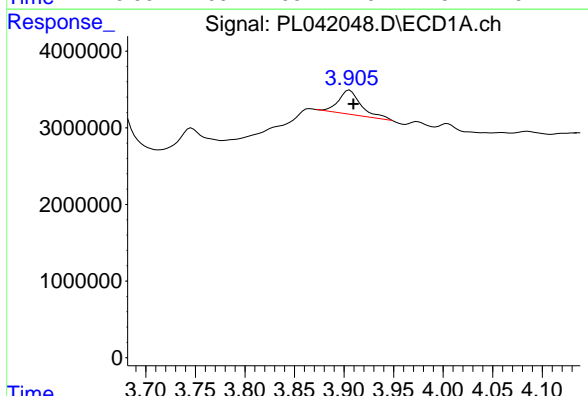


#1 Tetrachloro-m-xylene
 R.T.: 3.469 min
 Delta R.T.: -0.001 min
 Response: 8600965
 Conc: 13.93 ng/ml

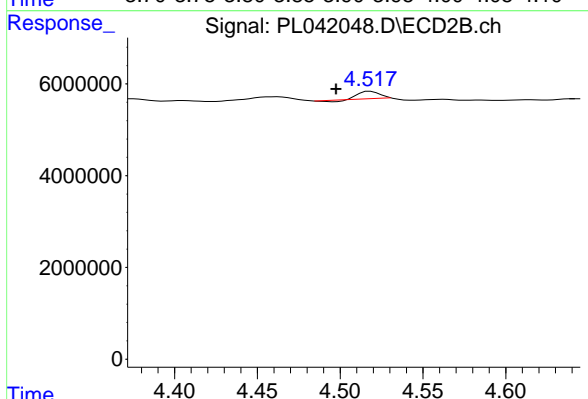
Instrument :
 ECD_L
 ClientSampleId :



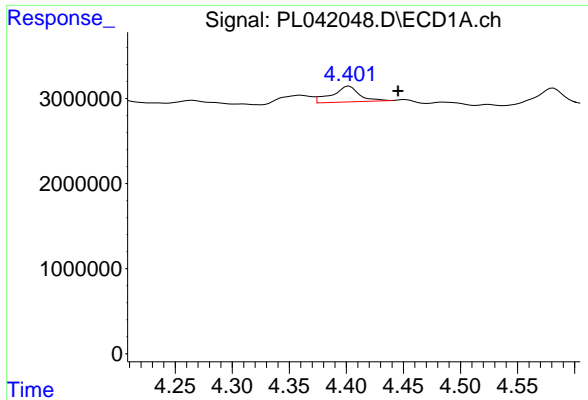
#1 Tetrachloro-m-xylene
 R.T.: 4.102 min
 Delta R.T.: 0.000 min
 Response: 39605809
 Conc: 13.37 ng/ml



#2 alpha-BHC
 R.T.: 3.906 min
 Delta R.T.: -0.004 min
 Response: 4834455
 Conc: 0.51 ng/ml

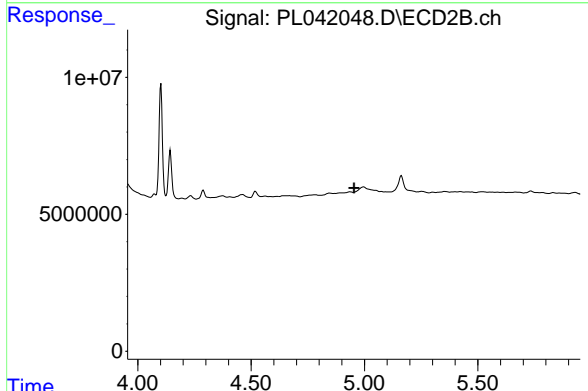


#2 alpha-BHC
 R.T.: 4.518 min
 Delta R.T.: 0.021 min
 Response: 1352399
 Conc: 0.30 ng/ml

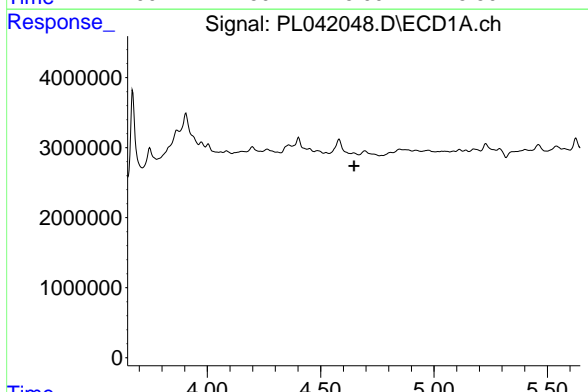


#6 beta-BHC
 R.T.: 4.403 min
 Delta R.T.: -0.043 min
 Response: 3092310
 Conc: 0.84 ng/ml

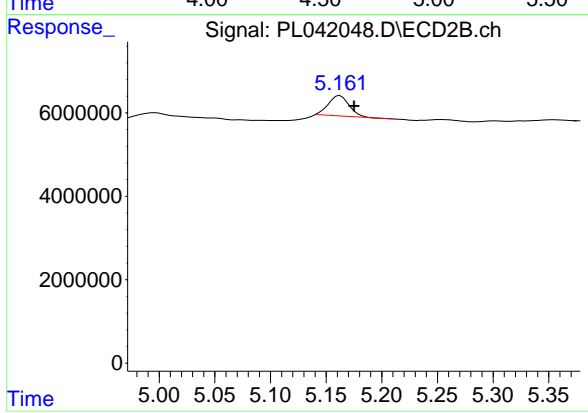
Instrument :
 ECD_L
 ClientSampleId :



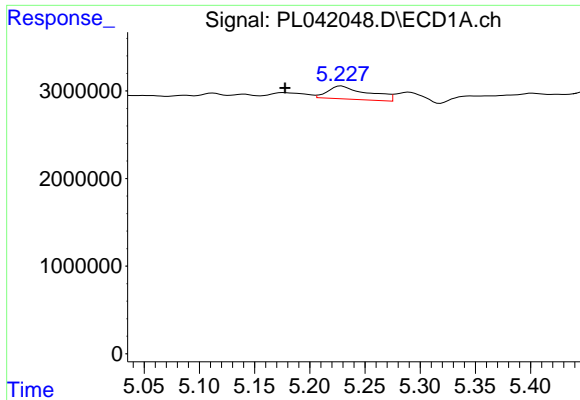
#6 beta-BHC
 R.T.: 0.000 min
 Exp R.T. : 4.954 min
 Response: 0
 Conc: N.D.



#7 delta-BHC
 R.T.: 0.000 min
 Exp R.T. : 4.648 min
 Response: 0
 Conc: N.D.

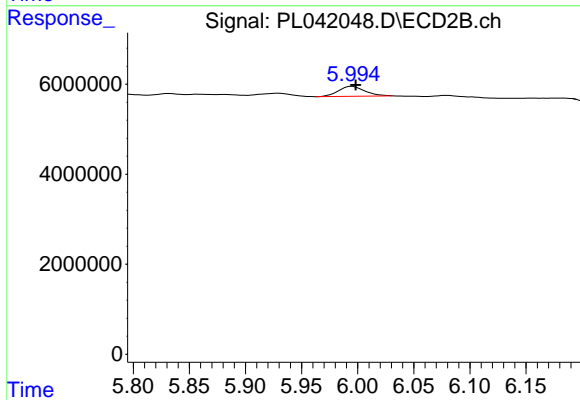


#7 delta-BHC
 R.T.: 5.163 min
 Delta R.T.: -0.013 min
 Response: 6179140
 Conc: 1.56 ng/ml

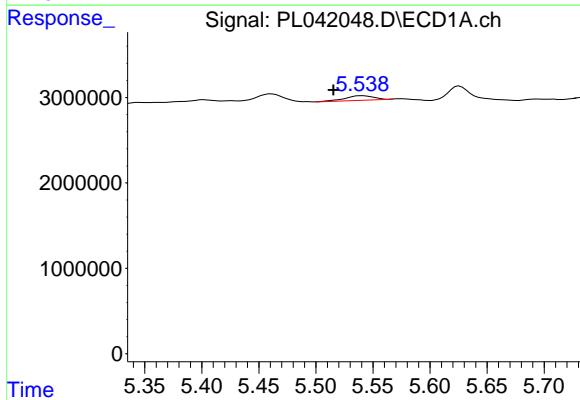


#8 Heptachlor epoxide
 R.T.: 5.229 min
 Delta R.T.: 0.051 min
 Response: 3733174
 Conc: 0.47 ng/ml

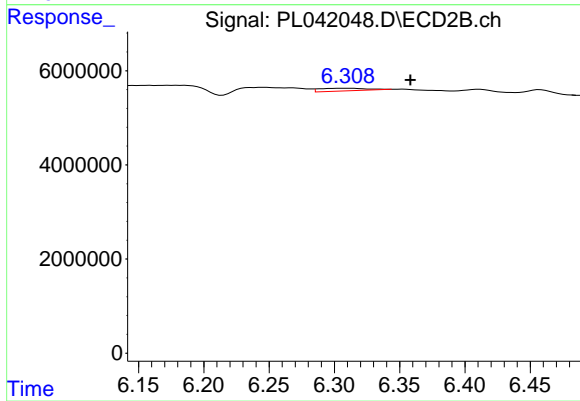
Instrument :
 ECD_L
 ClientSampleId :



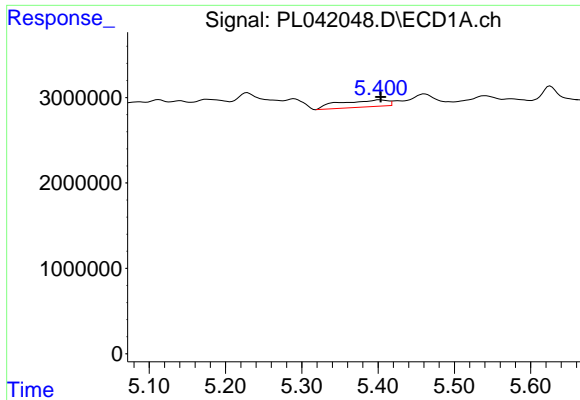
#8 Heptachlor epoxide
 R.T.: 5.995 min
 Delta R.T.: -0.003 min
 Response: 3629710
 Conc: 1.01 ng/ml



#9 Endosulfan I
 R.T.: 5.540 min
 Delta R.T.: 0.025 min
 Response: 942417
 Conc: 0.13 ng/ml

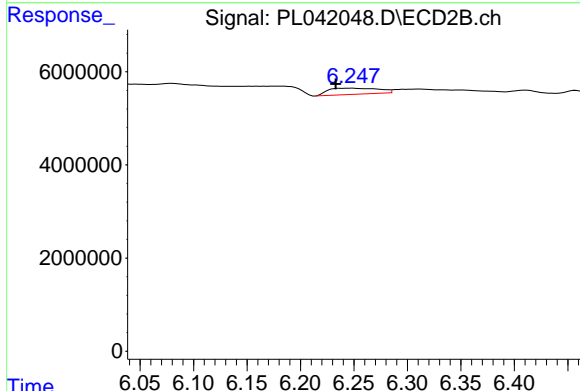


#9 Endosulfan I
 R.T.: 6.311 min
 Delta R.T.: -0.047 min
 Response: 1431126
 Conc: 0.44 ng/ml

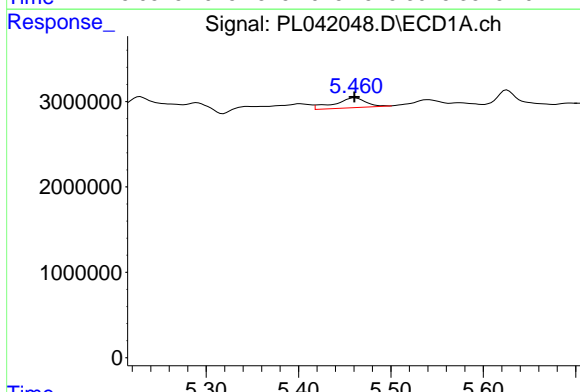


#10 gamma-Chlordane
 R.T.: 5.402 min
 Delta R.T.: -0.002 min
 Response: 3509220
 Conc: 0.44 ng/ml

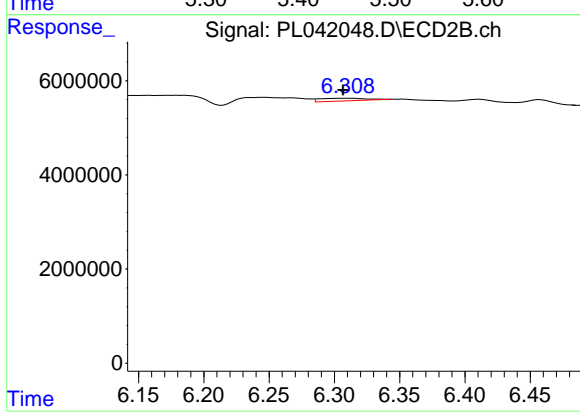
Instrument :
 ECD_L
 ClientSampleId :



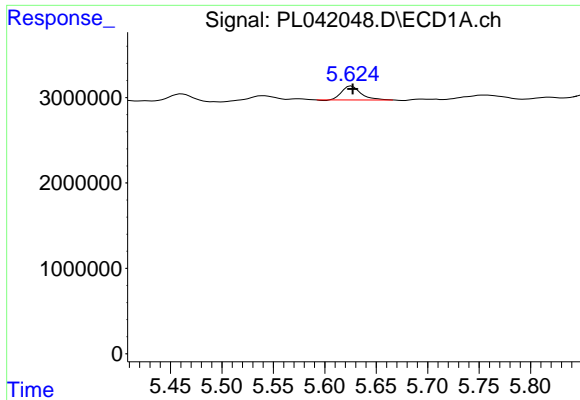
#10 gamma-Chlordane
 R.T.: 6.248 min
 Delta R.T.: 0.015 min
 Response: 4315177
 Conc: 1.22 ng/ml



#11 alpha-Chlordane
 R.T.: 5.461 min
 Delta R.T.: 0.000 min
 Response: 2719649
 Conc: 0.34 ng/ml

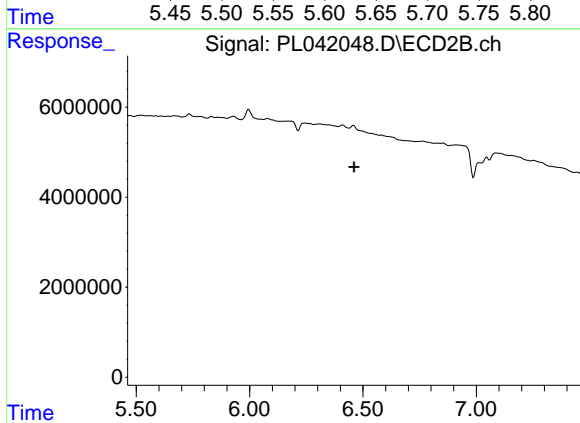


#11 alpha-Chlordane
 R.T.: 6.311 min
 Delta R.T.: 0.005 min
 Response: 1431126
 Conc: 0.41 ng/ml

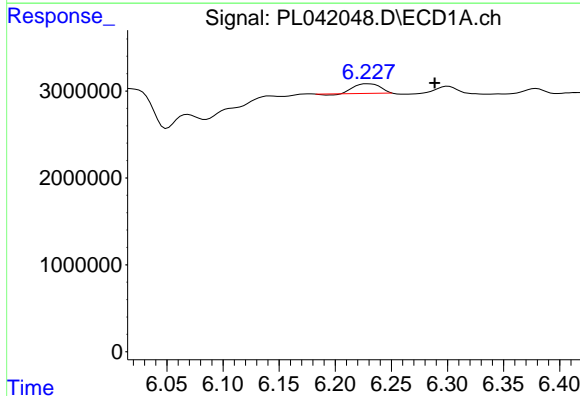


#12 4,4'-DDE
 R.T.: 5.626 min
 Delta R.T.: -0.001 min
 Response: 2089060
 Conc: 0.31 ng/ml

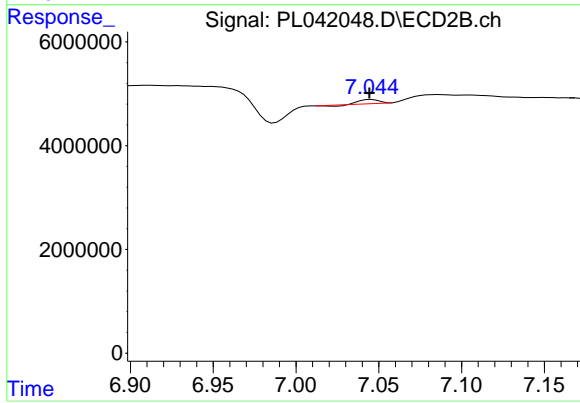
Instrument :
 ECD_L
 ClientSampled :



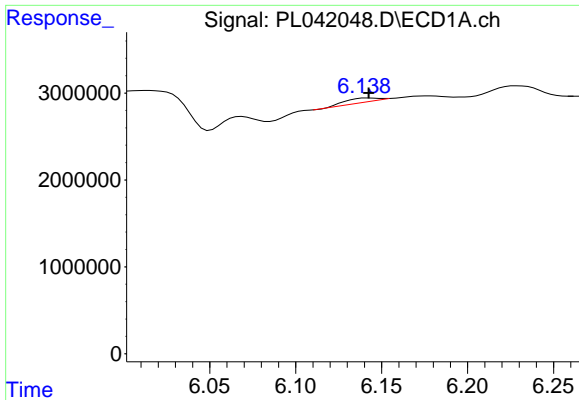
#12 4,4'-DDE
 R.T.: 0.000 min
 Exp R.T. : 6.461 min
 Response: 0
 Conc: N.D.



#15 Endosulfan II
 R.T.: 6.229 min
 Delta R.T.: -0.060 min
 Response: 1778726
 Conc: 0.26 ng/ml



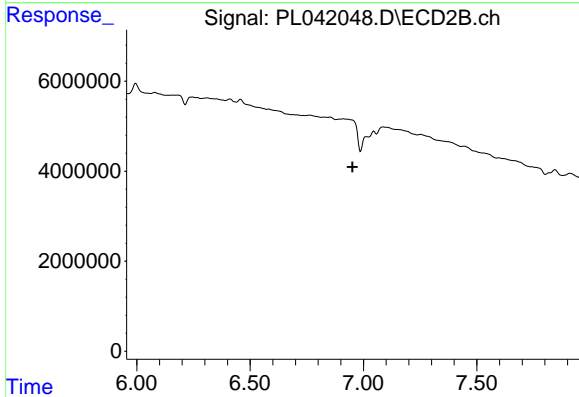
#15 Endosulfan II
 R.T.: 7.045 min
 Delta R.T.: 0.001 min
 Response: 539252
 Conc: 0.18 ng/ml



#16 4,4'-DDD

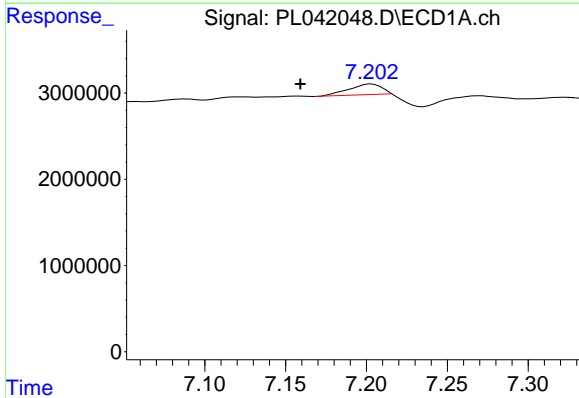
R.T.: 6.142 min
 Delta R.T.: 0.000 min
 Response: 605531
 Conc: 0.11 ng/ml

Instrument :
 ECD_L
 ClientSampled :



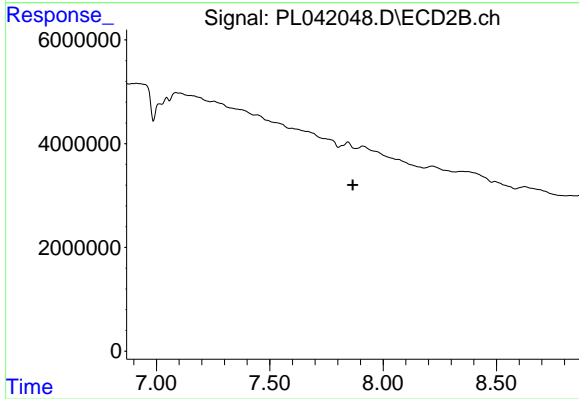
#16 4,4'-DDD

R.T.: 0.000 min
 Exp R.T. : 6.952 min
 Response: 0
 Conc: N.D.



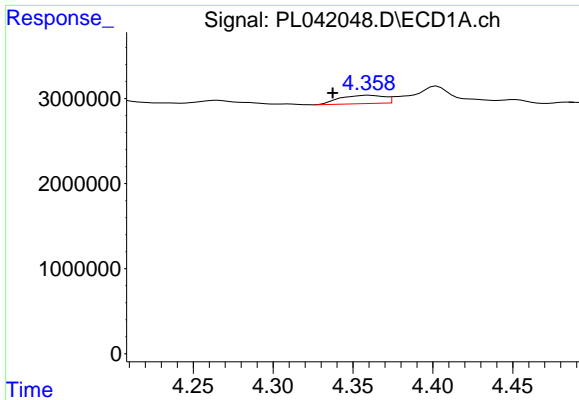
#21 Endrin ketone

R.T.: 7.203 min
 Delta R.T.: 0.044 min
 Response: 1757290
 Conc: 0.24 ng/ml



#21 Endrin ketone

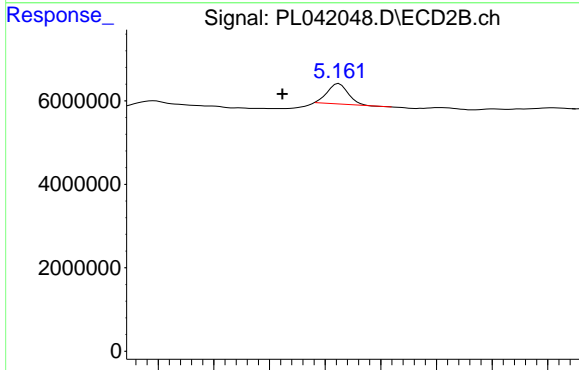
R.T.: 0.000 min
 Exp R.T. : 7.867 min
 Response: 0
 Conc: N.D.



#23 Chlordane-1

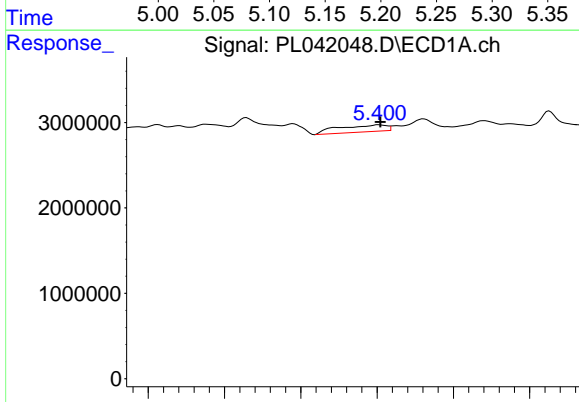
R.T.: 4.360 min
 Delta R.T.: 0.022 min
 Response: 1883727
 Conc: 6.31 ng/ml

Instrument :
 ECD_L
 ClientSampleId :



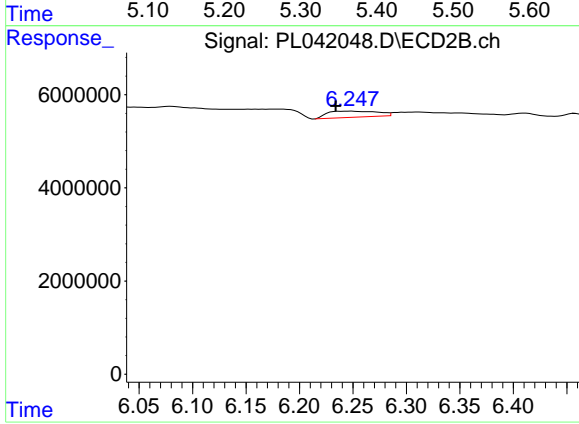
#23 Chlordane-1

R.T.: 5.163 min
 Delta R.T.: 0.051 min
 Response: 6179140
 Conc: 42.92 ng/ml



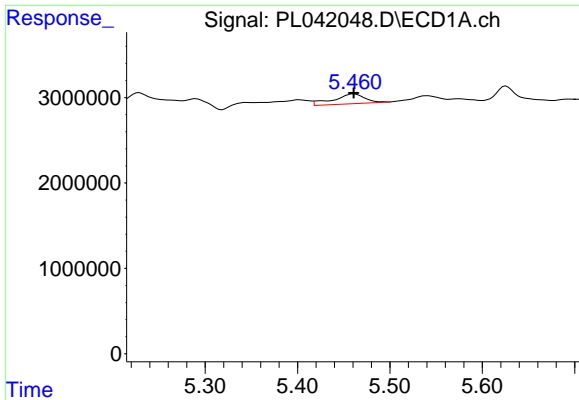
#25 Chlordane-3

R.T.: 5.402 min
 Delta R.T.: -0.003 min
 Response: 3509220
 Conc: 3.75 ng/ml



#25 Chlordane-3

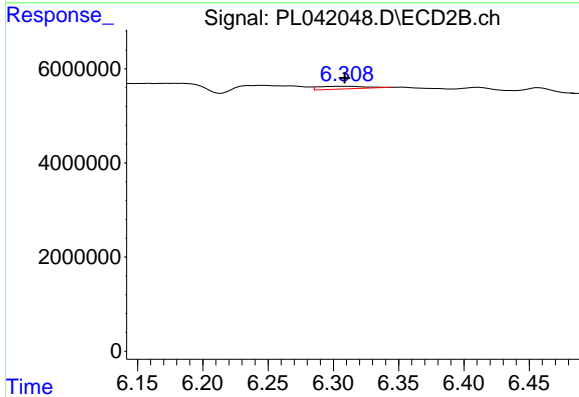
R.T.: 6.248 min
 Delta R.T.: 0.014 min
 Response: 4315177
 Conc: 8.45 ng/ml



#26 Chlordane-4

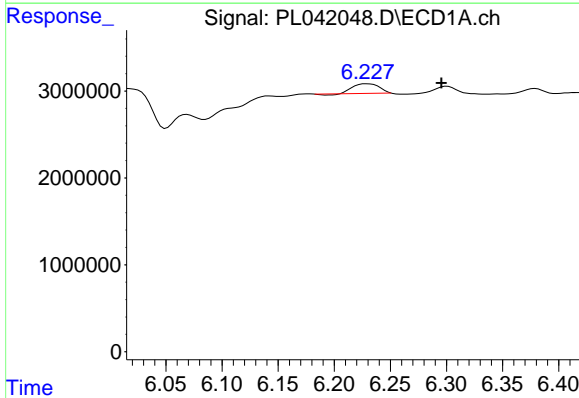
R.T.: 5.461 min
 Delta R.T.: 0.000 min
 Response: 2719649
 Conc: 3.26 ng/ml

Instrument :
 ECD_L
 ClientSampleId :



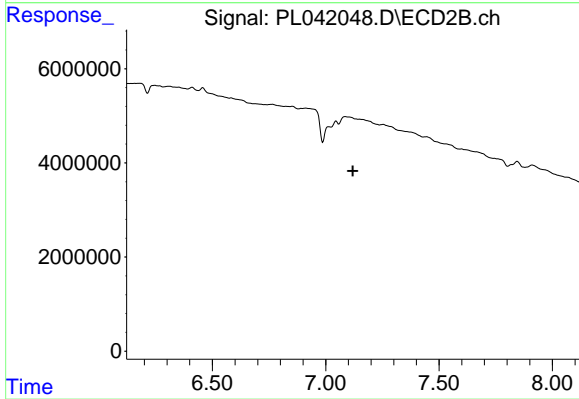
#26 Chlordane-4

R.T.: 6.311 min
 Delta R.T.: 0.003 min
 Response: 1431126
 Conc: 2.40 ng/ml



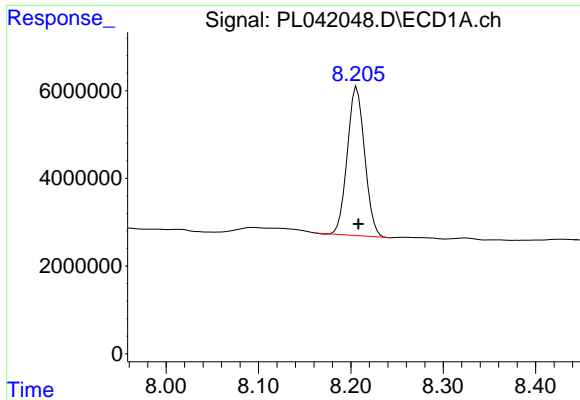
#27 Chlordane-5

R.T.: 6.229 min
 Delta R.T.: -0.067 min
 Response: 1778726
 Conc: 6.79 ng/ml



#27 Chlordane-5

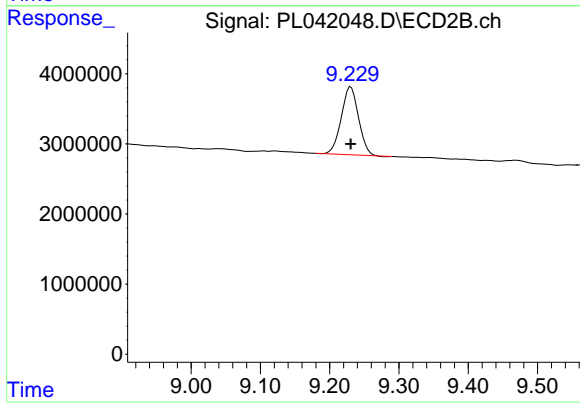
R.T.: 0.000 min
 Exp R.T. : 7.119 min
 Response: 0
 Conc: N.D.



#28 Decachlorobiphenyl

R.T.: 8.207 min
Delta R.T.: -0.002 min
Response: 44267980
Conc: 6.46 ng/ml

Instrument :
ECD_L
ClientSampleId :



#28 Decachlorobiphenyl

R.T.: 9.231 min
Delta R.T.: 0.000 min
Response: 16670943
Conc: 6.54 ng/ml