

Data Path : Z:\pestpcbsrv\HPCHEM1\ECD_L\Data\PL111218\
 Data File : PL042079.D
 Signal(s) : Signal #1: ECD1A.ch Signal #2: ECD2B.ch
 Acq On : 12 Nov 2018 22:07
 Operator : AJ\SJ
 Sample : J5269-22
 Misc :
 ALS Vial : 31 Sample Multiplier: 1

Instrument :
 ECD_L
 ClientSampleId :

Integration File signal 1: autoint1.e
 Integration File signal 2: autoint2.e
 Quant Time: Nov 13 03:39:00 2018
 Quant Method : Z:\pestpcbsrv\HPCHEM1\ECD_L\methods\PL110918.M
 Quant Title : GC Extractables
 QLast Update : Fri Nov 09 12:38:40 2018
 Response via : Initial Calibration
 Integrator: ChemStation

Volume Inj. : 2 µl
 Signal #1 Phase : ZB-MR1 Signal #2 Phase: ZB-MR2
 Signal #1 Info : 30M x 0.32mm x0.5 Signal #2 Info : 30M x 0.32mm x0.25µm

| Compound | RT#1 | RT#2 | Resp#1 | Resp#2 | ng/ml | ng/ml |
|-----------------------------|--------|-------|----------|----------|--------|--------|
| ----- | | | | | | |
| System Monitoring Compounds | | | | | | |
| 1) SA Tetrachlo... | 3.469 | 4.102 | 123.4E6 | 65667446 | 19.990 | 22.165 |
| 28) SA Decachlor... | 8.207 | 9.230 | 117.2E6 | 49680563 | 17.112 | 19.478 |
| Target Compounds | | | | | | |
| 3) MA gamma-BHC... | 4.200 | 0.000 | 1587513 | 0 | 0.184 | N.D. # |
| 6) B beta-BHC | 4.404f | 0.000 | 13926858 | 0 | 3.774 | N.D. # |
| 23) Chlordane-1 | 4.404 | 5.147 | 13926858 | -2719031 | 46.665 | N.D. # |
| ----- | | | | | | |

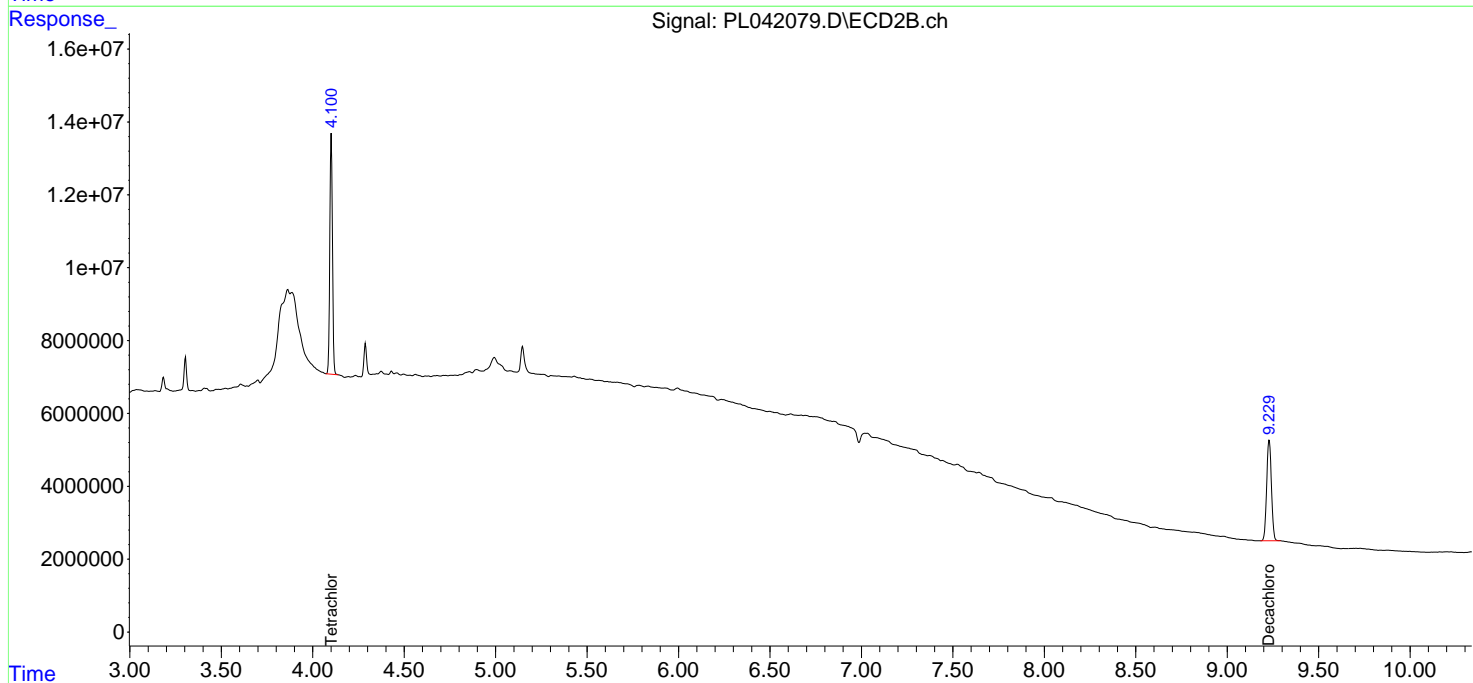
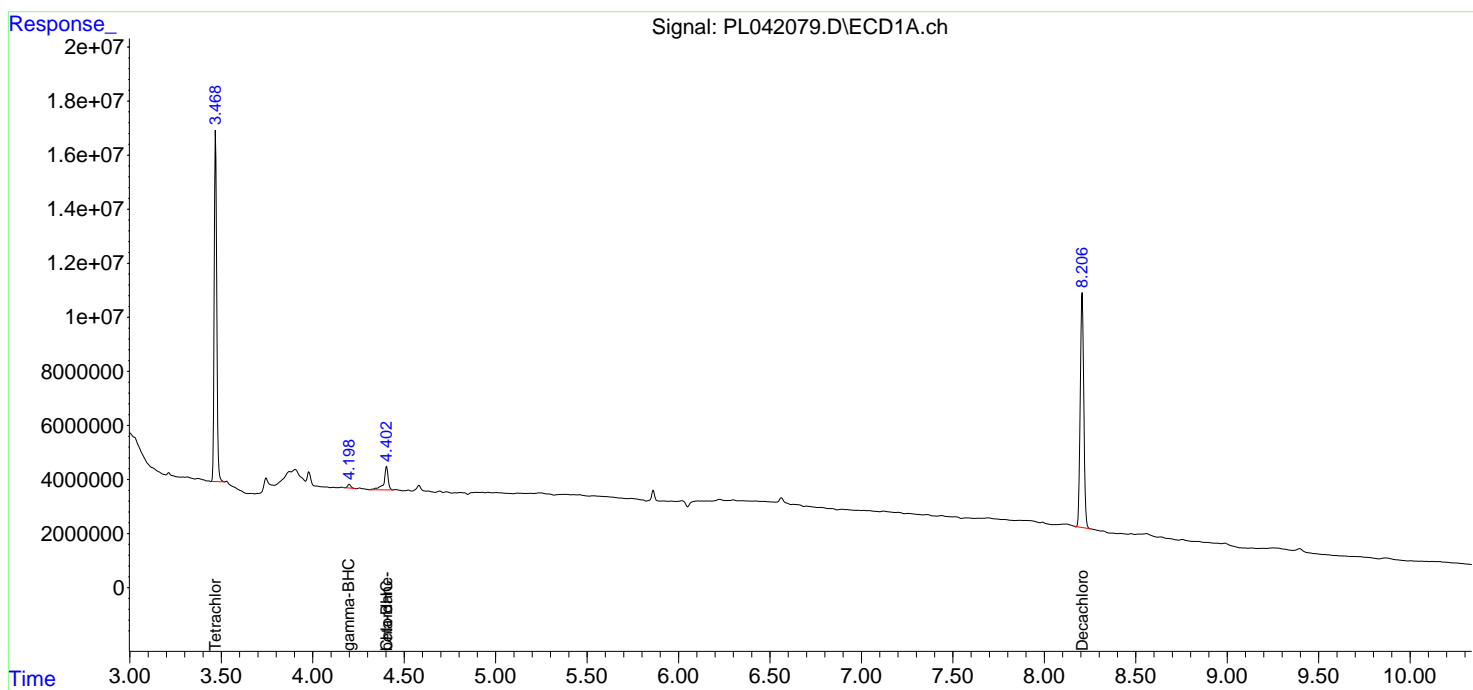
(f)=RT Delta > 1/2 Window (#)=Amounts differ by > 25% (m)=manual int.

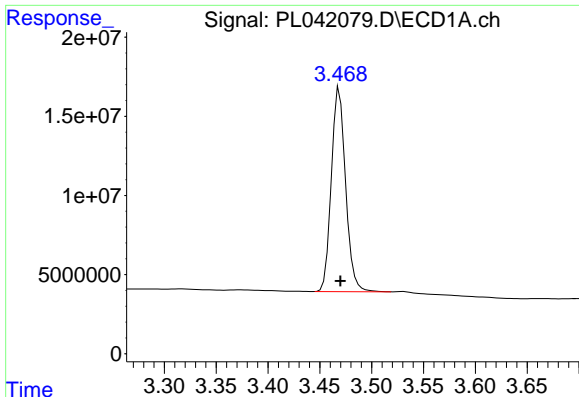
Data Path : Z:\pestpcbsrv\HPCHEM1\ECD_L\Data\PL111218\
 Data File : PL042079.D
 Signal(s) : Signal #1: ECD1A.ch Signal #2: ECD2B.ch
 Acq On : 12 Nov 2018 22:07
 Operator : AJ\SJ
 Sample : J5269-22
 Misc :
 ALS Vial : 31 Sample Multiplier: 1

Instrument :
 ECD_L
 ClientSampled :

Integration File signal 1: autoint1.e
 Integration File signal 2: autoint2.e
 Quant Time: Nov 13 03:39:00 2018
 Quant Method : Z:\pestpcbsrv\HPCHEM1\ECD_L\methods\PL110918.M
 Quant Title : GC Extractables
 QLast Update : Fri Nov 09 12:38:40 2018
 Response via : Initial Calibration
 Integrator: ChemStation

Volume Inj. : 2 µl
 Signal #1 Phase : ZB-MR1 Signal #2 Phase: ZB-MR2
 Signal #1 Info : 30M x 0.32mm x0.5 Signal #2 Info : 30M x 0.32mm x0.25µm

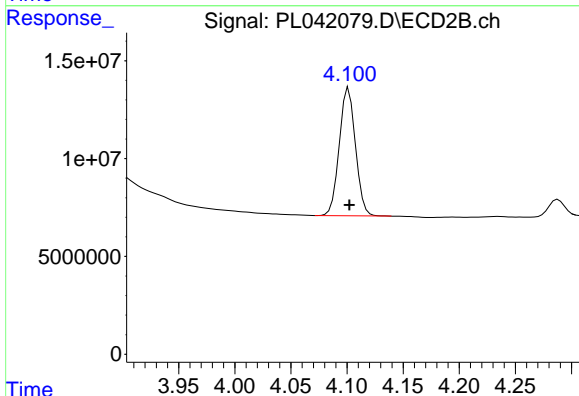




#1 Tetrachloro-m-xylene

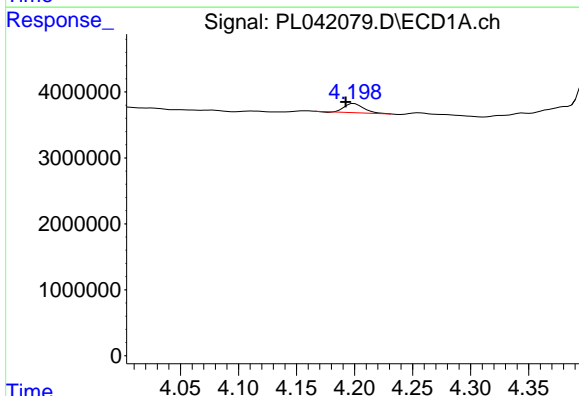
R.T.: 3.469 min
 Delta R.T.: -0.001 min
 Response: 123438121
 Conc: 19.99 ng/ml

Instrument :
 ECD_L
 ClientSampleId :



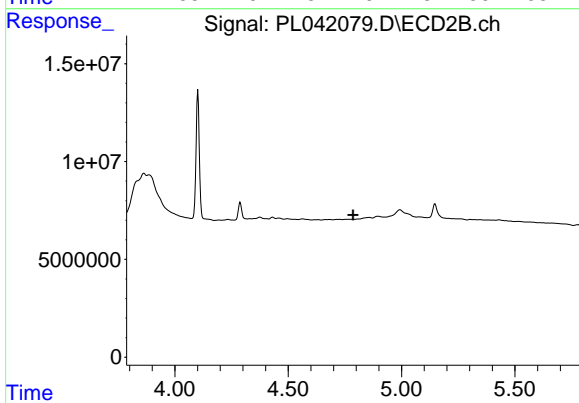
#1 Tetrachloro-m-xylene

R.T.: 4.102 min
 Delta R.T.: 0.000 min
 Response: 65667446
 Conc: 22.16 ng/ml



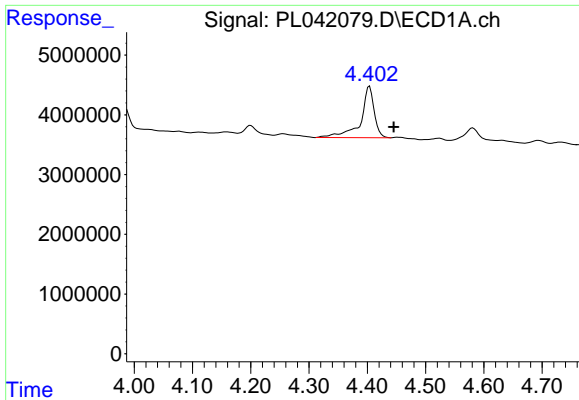
#3 gamma-BHC (Lindane)

R.T.: 4.200 min
 Delta R.T.: 0.007 min
 Response: 1587513
 Conc: 0.18 ng/ml



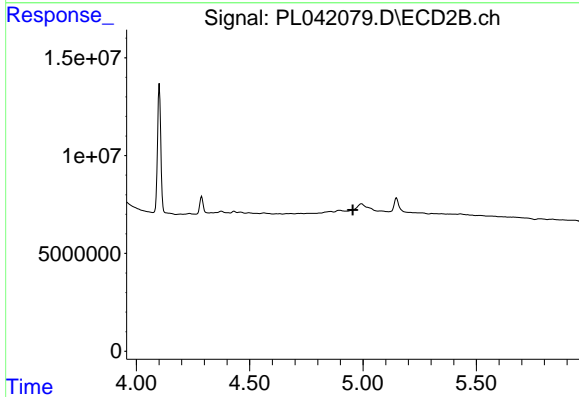
#3 gamma-BHC (Lindane)

R.T.: 0.000 min
 Exp R.T. : 4.786 min
 Response: 0
 Conc: N.D.

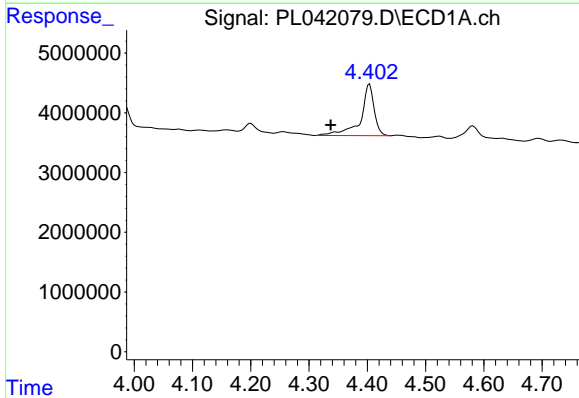


#6 beta-BHC
 R.T.: 4.404 min
 Delta R.T.: -0.042 min
 Response: 13926858
 Conc: 3.77 ng/ml

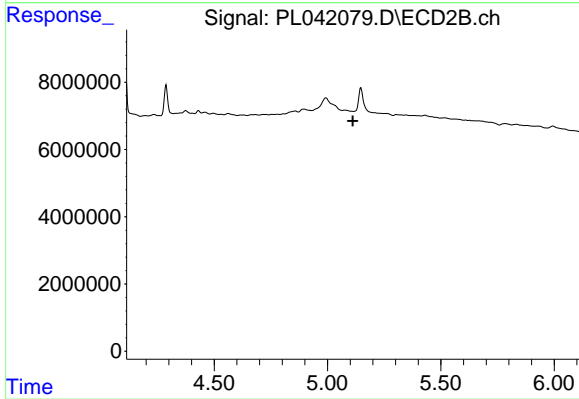
Instrument :
 ECD_L
 ClientSampleId :



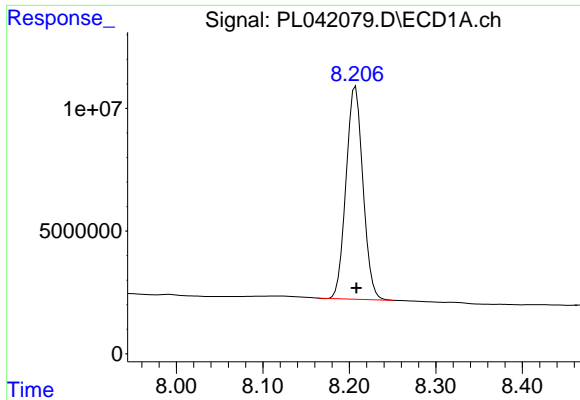
#6 beta-BHC
 R.T.: 0.000 min
 Exp R.T. : 4.954 min
 Response: 0
 Conc: N.D.



#23 Chlordane-1
 R.T.: 4.404 min
 Delta R.T.: 0.066 min
 Response: 13926858
 Conc: 46.67 ng/ml



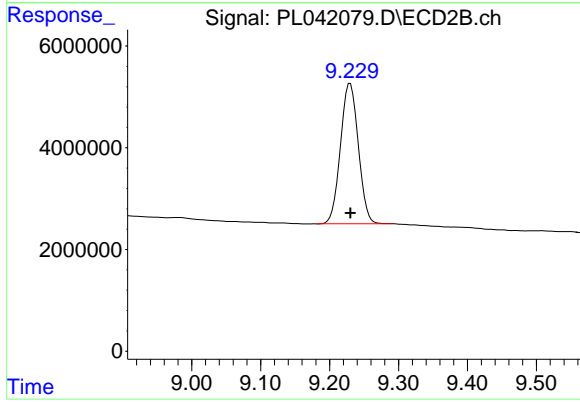
#23 Chlordane-1
 R.T.: 5.147 min
 Delta R.T.: 0.036 min
 Response: -2719031
 Conc: N.D.



#28 Decachlorobiphenyl

R.T.: 8.207 min
Delta R.T.: 0.000 min
Response: 117224314
Conc: 17.11 ng/ml

Instrument :
ECD_L
ClientSampleId :



#28 Decachlorobiphenyl

R.T.: 9.230 min
Delta R.T.: 0.000 min
Response: 49680563
Conc: 19.48 ng/ml