

Data Path : Z:\pestpcbsrv\HPCHEM1\ECD\_L\Data\PL111224\  
 Data File : PL092999.D  
 Signal(s) : Signal #1: ECD1A.ch Signal #2: ECD2B.ch  
 Acq On : 12 Nov 2024 12:38  
 Operator : AR\AJ  
 Sample : P4798-01  
 Misc :  
 ALS Vial : 6 Sample Multiplier: 1

Instrument :  
 ECD\_L  
 ClientSampleId :  
 MH-6

Integration File signal 1: autoint1.e  
 Integration File signal 2: autoint2.e  
 Quant Time: Nov 13 00:33:02 2024  
 Quant Method : Z:\pestpcbsrv\HPCHEM1\ECD\_L\methods\PL102824.M  
 Quant Title : GC Extractables  
 QLast Update : Mon Oct 28 18:58:23 2024  
 Response via : Initial Calibration  
 Integrator: ChemStation

Volume Inj. : 1 µl  
 Signal #1 Phase : ZB-MR2 Signal #2 Phase: ZB-MR1  
 Signal #1 Info : 30M x 0.32mm x0.2 Signal #2 Info : 30M x 0.32mm x0.5µm

Compound	RT#1	RT#2	Resp#1	Resp#2	ng/ml	ng/ml
-----						
System Monitoring Compounds						
1) SA Tetrachlo...	3.542	2.777	32659769	39289730	13.329	14.439
28) SA Decachlor...	9.060	7.918	22590093	33359838	11.738	12.223
Target Compounds						
2) A alpha-BHC	0.000	3.299f	0	484839	N.D.	0.122 #
4) MA Heptachlor	0.000	3.968f	0	5834301	N.D.	1.546 #
5) MB Aldrin	5.231f	4.244	4641406	4142633	1.546	1.132 #
6) B beta-BHC	4.552f	3.918	-1023771	3713723	N.D.	2.256
7) B delta-BHC	4.770	4.148	2861444	4759133	0.914	1.238 #
8) B Heptachlo...	5.681	4.732	9236128	1215800	3.345	0.364 #
10) B gamma-Chl...	5.943	4.985	13742328	13095061	5.165	3.895
11) B alpha-Chl...	6.025	5.044	19661578	28288707	7.425	8.505
12) B 4,4'-DDE	6.195	5.235	10617496	12340753	4.481	3.831
13) MA Dieldrin	6.346	5.369	1932778	16036841	0.733	4.801 #
14) MA Endrin	6.576	5.650	4590216	-673348	2.016	N.D. #
16) A 4,4'-DDD	6.718	5.789	21303409	10965202	11.098	4.404 #
17) MA 4,4'-DDT	7.001f	6.036	17297580	24251409	8.357	9.041
18) B Endrin al...	0.000	6.135f	0	5344769	N.D.	2.316 #
19) B Endosulfa...	7.141f	6.334	2926080	7174585	1.348	2.660 #
21) B Endrin ke...	7.620f	0.000	10815743	0	4.464	N.D. #
23) Chlordane-1	4.703	3.775	4034023	4111478	36.676	38.731
24) Chlordane-2	5.231	4.352	4641406	1705176	40.496	13.768 #
25) Chlordane-3	5.943	4.985	13742328	13095061	35.208	36.106
26) Chlordane-4	6.025	5.044	19661578	28288707	41.133	80.868 #

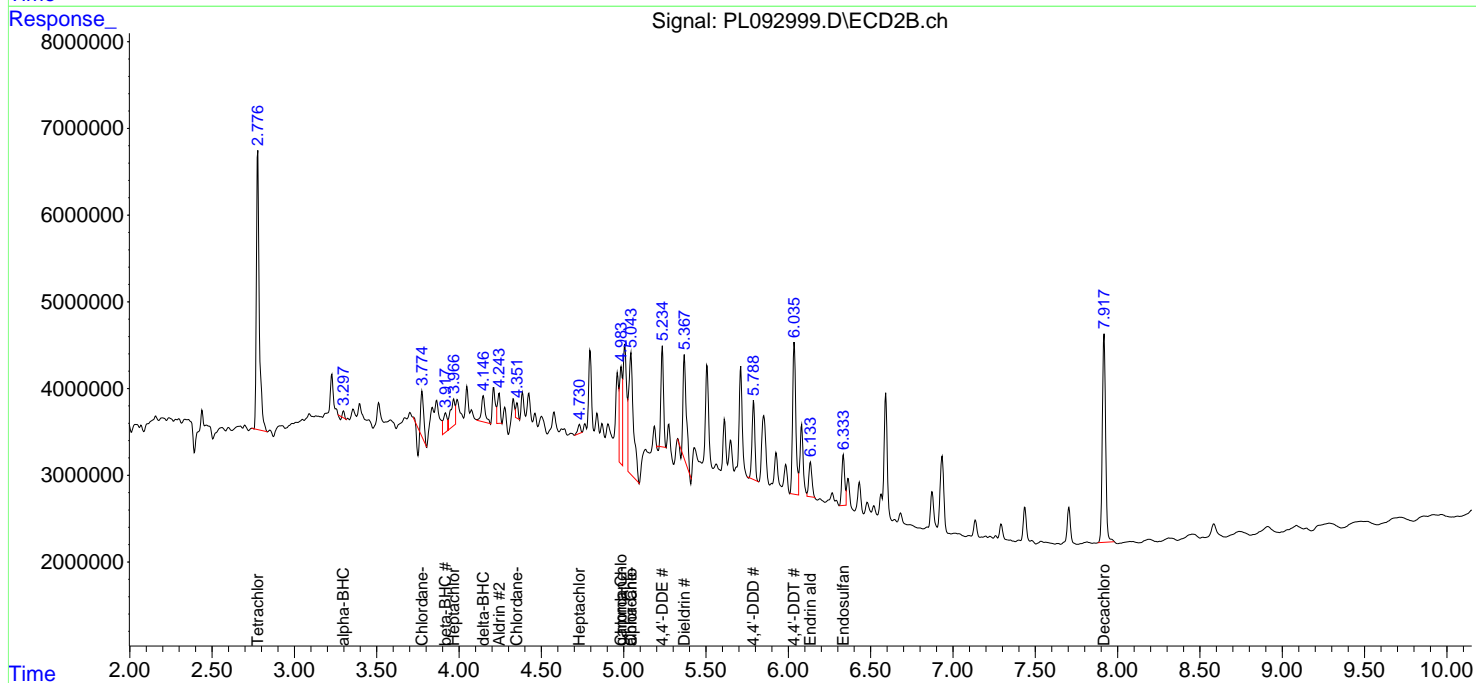
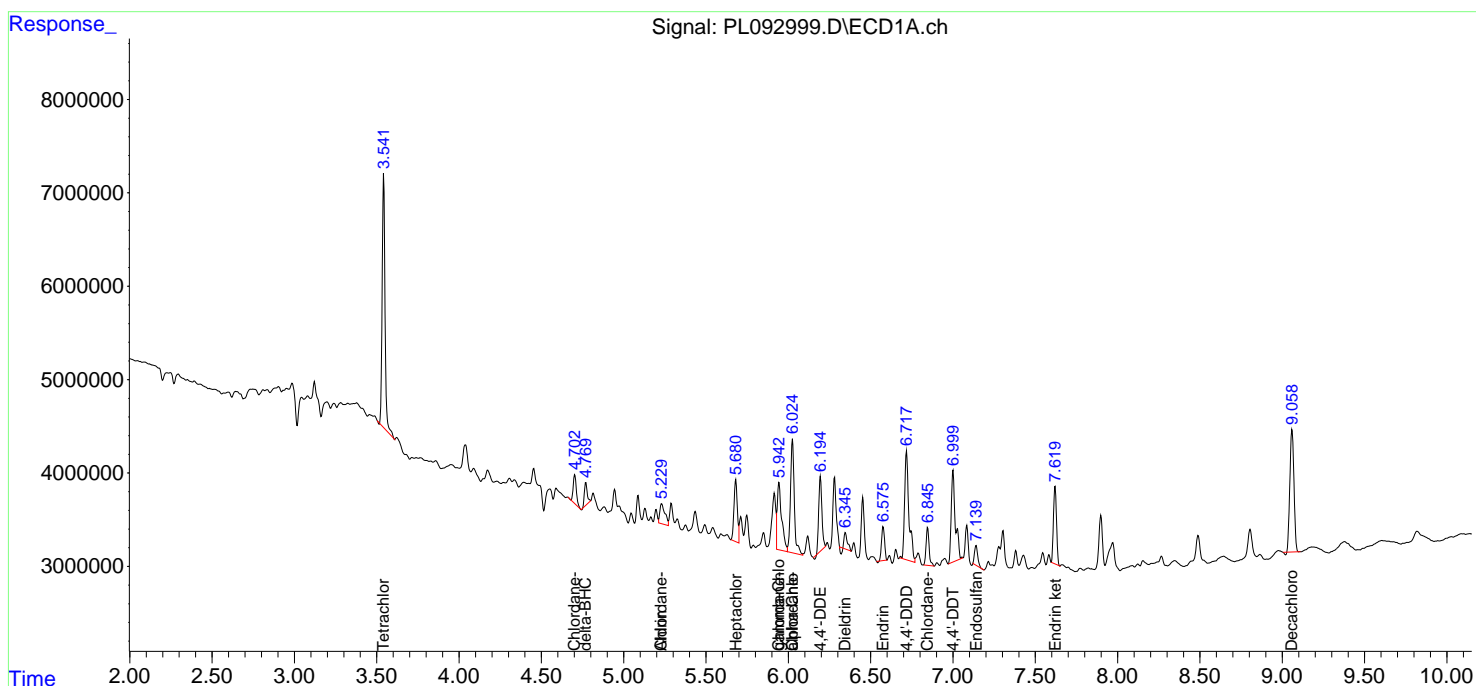
(f)=RT Delta > 1/2 Window (#)=Amounts differ by > 25% (m)=manual int.

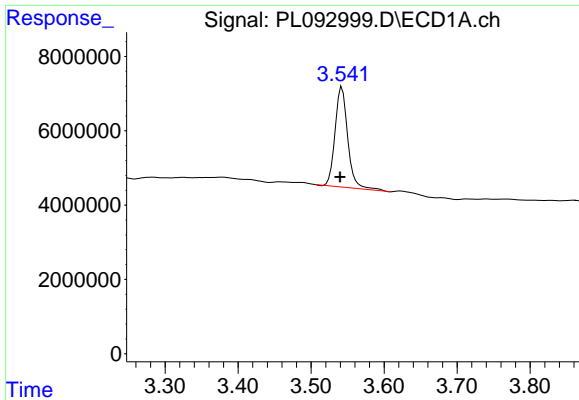
Data Path : Z:\pestpcbsrv\HPCHEM1\ECD\_L\Data\PL111224\  
 Data File : PL092999.D  
 Signal(s) : Signal #1: ECD1A.ch Signal #2: ECD2B.ch  
 Acq On : 12 Nov 2024 12:38  
 Operator : AR\AJ  
 Sample : P4798-01  
 Misc :  
 ALS Vial : 6 Sample Multiplier: 1

Instrument :  
 ECD\_L  
 ClientSampleId :  
 MH-6

Integration File signal 1: autoint1.e  
 Integration File signal 2: autoint2.e  
 Quant Time: Nov 13 00:33:02 2024  
 Quant Method : Z:\pestpcbsrv\HPCHEM1\ECD\_L\methods\PL102824.M  
 Quant Title : GC Extractables  
 QLast Update : Mon Oct 28 18:58:23 2024  
 Response via : Initial Calibration  
 Integrator: ChemStation

Volume Inj. : 1 µl  
 Signal #1 Phase : ZB-MR2 Signal #2 Phase: ZB-MR1  
 Signal #1 Info : 30M x 0.32mm x0.2 Signal #2 Info : 30M x 0.32mm x0.5µm

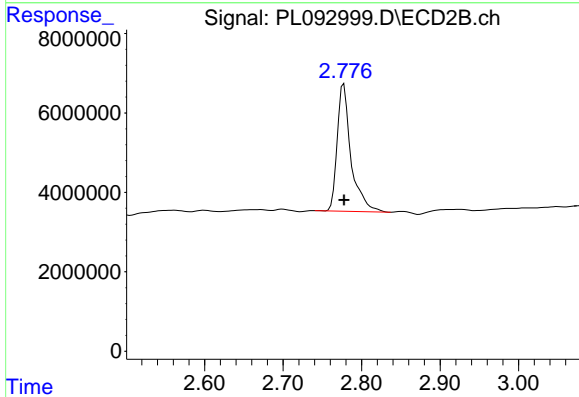




#1 Tetrachloro-m-xylene

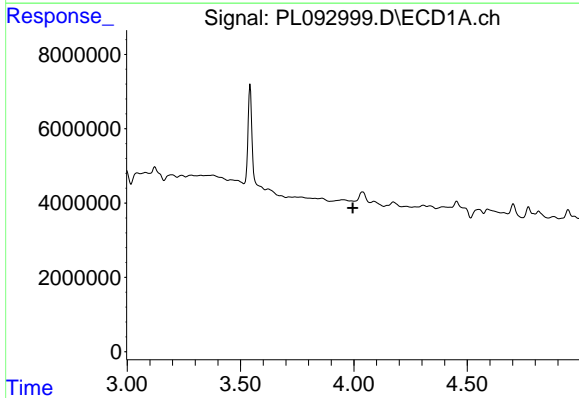
R.T.: 3.542 min  
 Delta R.T.: 0.002 min  
 Response: 32659769  
 Conc: 13.33 ng/ml

Instrument :  
 ECD\_L  
 ClientSampleId :  
 MH-6



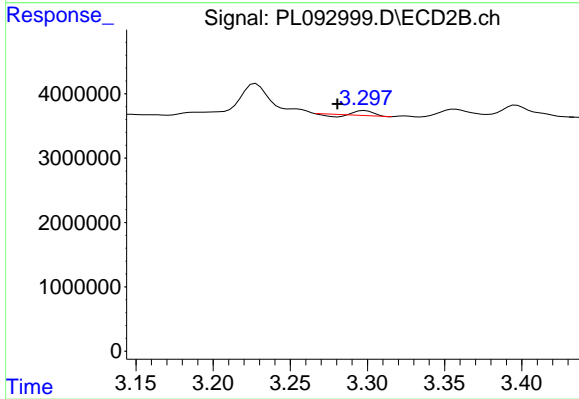
#1 Tetrachloro-m-xylene

R.T.: 2.777 min  
 Delta R.T.: 0.000 min  
 Response: 39289730  
 Conc: 14.44 ng/ml



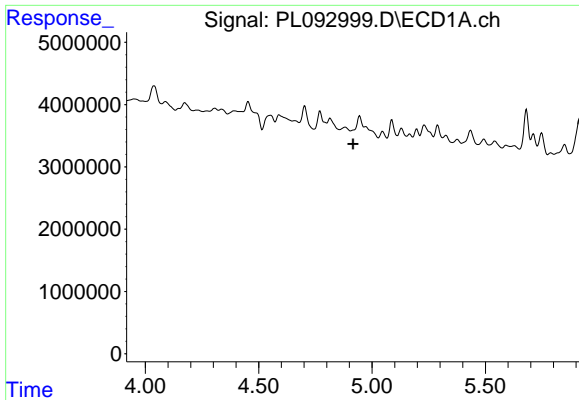
#2 alpha-BHC

R.T.: 0.000 min  
 Exp R.T. : 3.996 min  
 Response: 0  
 Conc: N.D.



#2 alpha-BHC

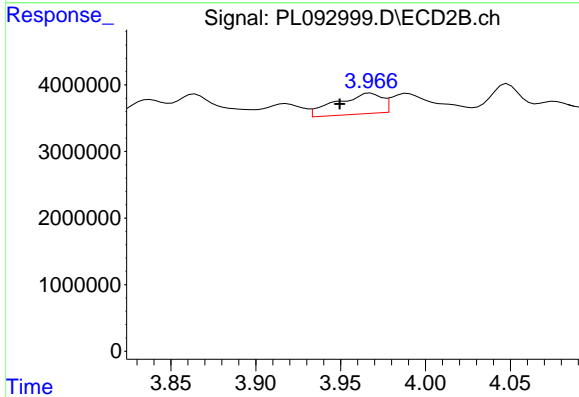
R.T.: 3.299 min  
 Delta R.T.: 0.018 min  
 Response: 484839  
 Conc: 0.12 ng/ml



#4 Heptachlor

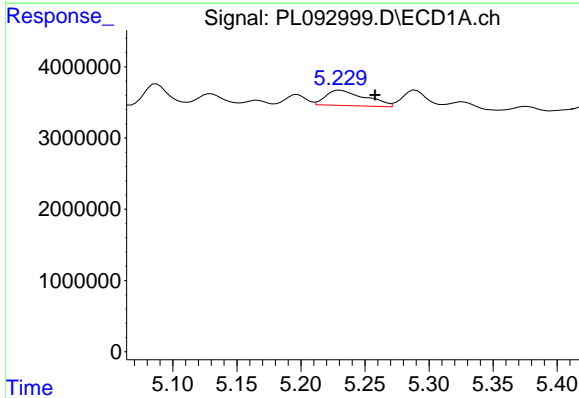
R.T.: 0.000 min  
 Exp R.T.: 4.917 min  
 Response: 0  
 Conc: N.D.

Instrument : ECD\_L  
 ClientSampleId : MH-6



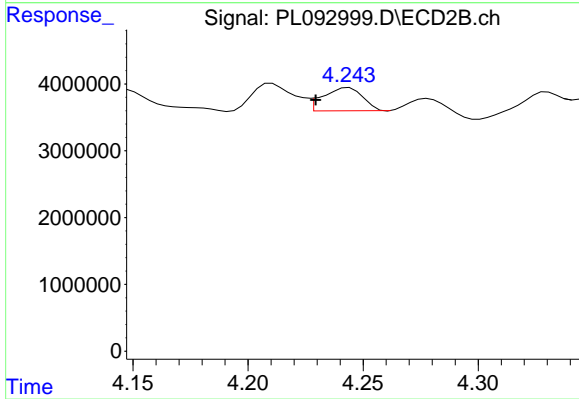
#4 Heptachlor

R.T.: 3.968 min  
 Delta R.T.: 0.018 min  
 Response: 5834301  
 Conc: 1.55 ng/ml



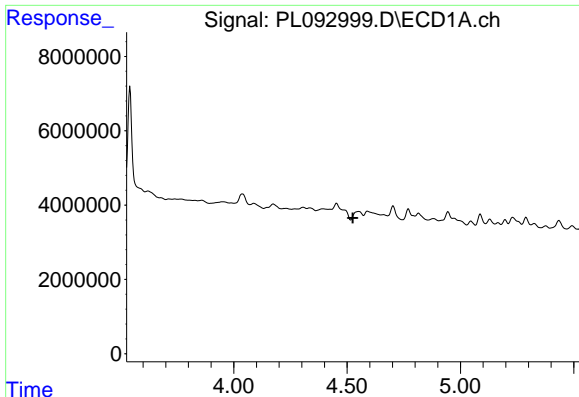
#5 Aldrin

R.T.: 5.231 min  
 Delta R.T.: -0.027 min  
 Response: 4641406  
 Conc: 1.55 ng/ml



#5 Aldrin

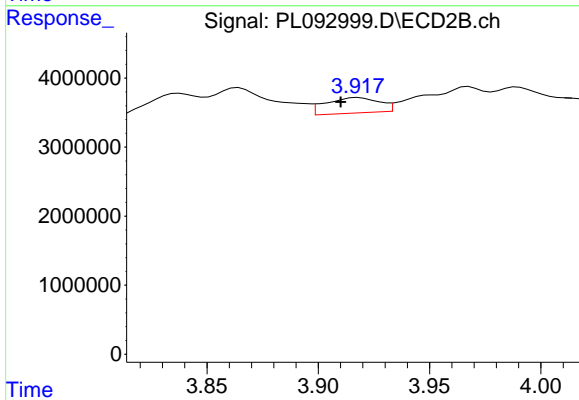
R.T.: 4.244 min  
 Delta R.T.: 0.014 min  
 Response: 4142633  
 Conc: 1.13 ng/ml



#6 beta-BHC

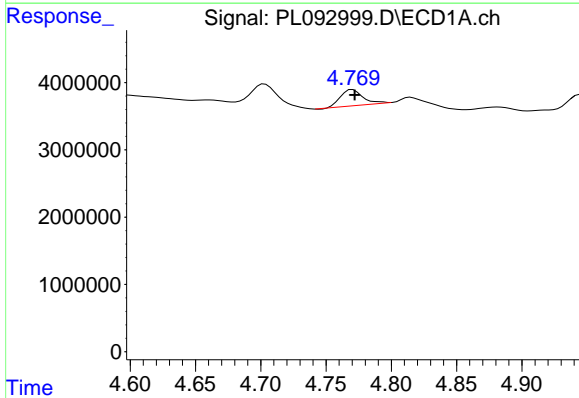
R.T.: 4.552 min  
 Delta R.T.: 0.026 min  
 Response: -1023771  
 Conc: N.D.

Instrument :  
 ECD\_L  
 ClientSampleId :  
 MH-6



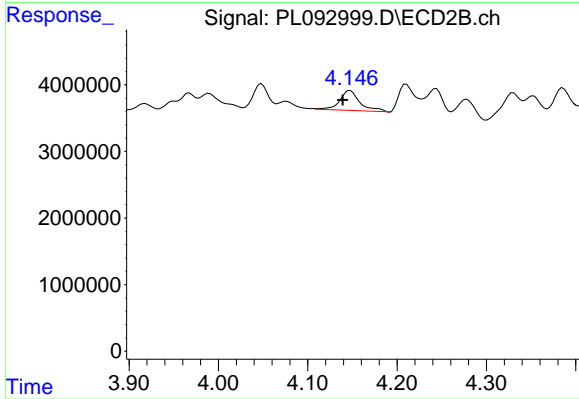
#6 beta-BHC

R.T.: 3.918 min  
 Delta R.T.: 0.008 min  
 Response: 3713723  
 Conc: 2.26 ng/ml



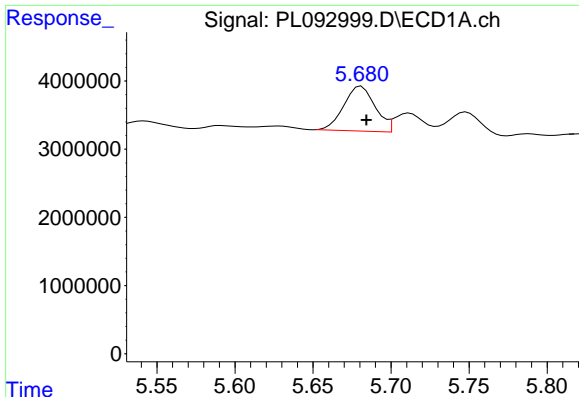
#7 delta-BHC

R.T.: 4.770 min  
 Delta R.T.: -0.002 min  
 Response: 2861444  
 Conc: 0.91 ng/ml



#7 delta-BHC

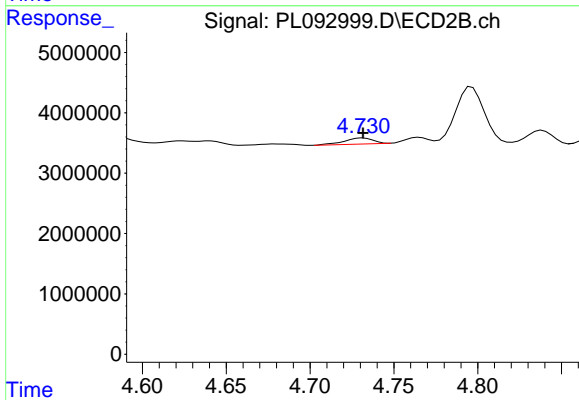
R.T.: 4.148 min  
 Delta R.T.: 0.008 min  
 Response: 4759133  
 Conc: 1.24 ng/ml



#8 Heptachlor epoxide

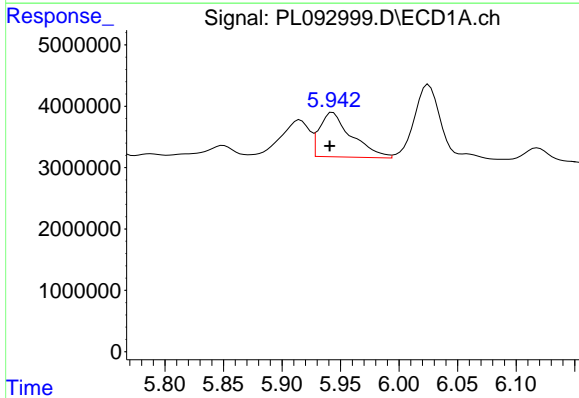
R.T.: 5.681 min  
 Delta R.T.: -0.003 min  
 Response: 9236128  
 Conc: 3.34 ng/ml

Instrument :  
 ECD\_L  
 ClientSampleId :  
 MH-6



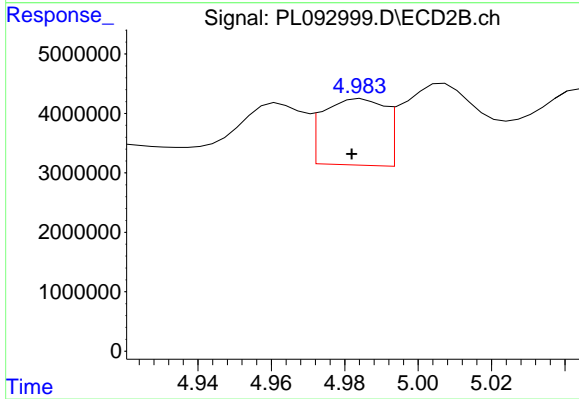
#8 Heptachlor epoxide

R.T.: 4.732 min  
 Delta R.T.: 0.000 min  
 Response: 1215800  
 Conc: 0.36 ng/ml



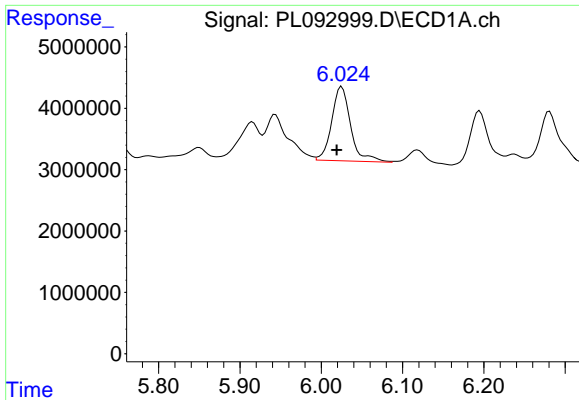
#10 gamma-Chlordane

R.T.: 5.943 min  
 Delta R.T.: 0.003 min  
 Response: 13742328  
 Conc: 5.17 ng/ml



#10 gamma-Chlordane

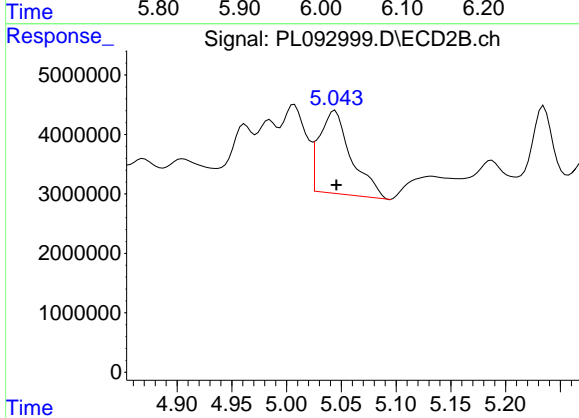
R.T.: 4.985 min  
 Delta R.T.: 0.003 min  
 Response: 13095061  
 Conc: 3.90 ng/ml



#11 alpha-Chlordane

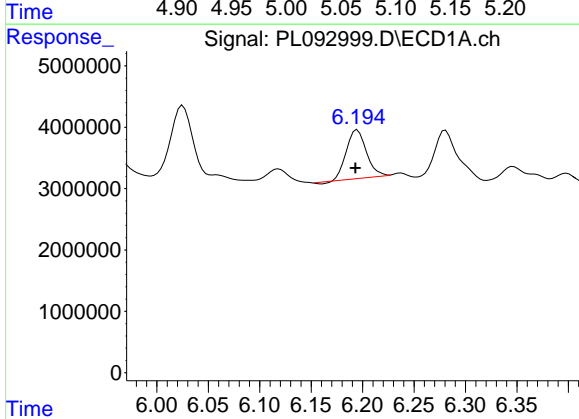
R.T.: 6.025 min  
 Delta R.T.: 0.006 min  
 Response: 19661578  
 Conc: 7.42 ng/ml

Instrument :  
 ECD\_L  
 ClientSampleId :  
 MH-6



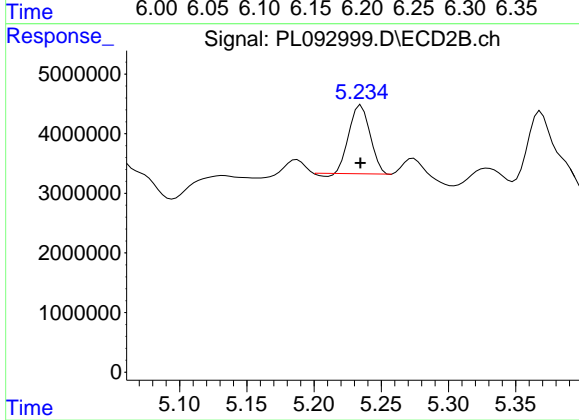
#11 alpha-Chlordane

R.T.: 5.044 min  
 Delta R.T.: -0.001 min  
 Response: 28288707  
 Conc: 8.51 ng/ml



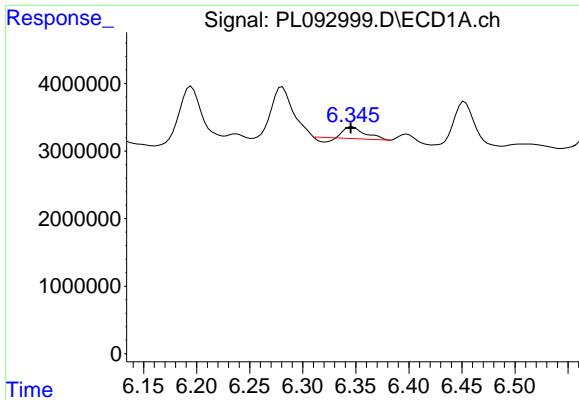
#12 4,4'-DDE

R.T.: 6.195 min  
 Delta R.T.: 0.002 min  
 Response: 10617496  
 Conc: 4.48 ng/ml



#12 4,4'-DDE

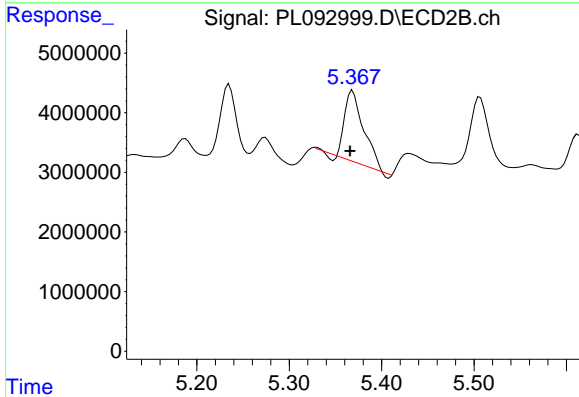
R.T.: 5.235 min  
 Delta R.T.: 0.000 min  
 Response: 12340753  
 Conc: 3.83 ng/ml



#13 Dieldrin

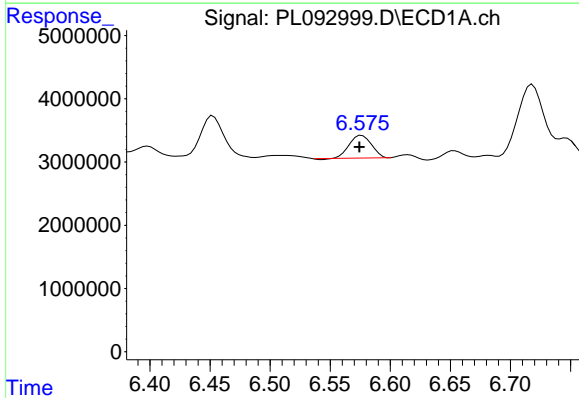
R.T.: 6.346 min  
 Delta R.T.: 0.001 min  
 Response: 1932778  
 Conc: 0.73 ng/ml

Instrument :  
 ECD\_L  
 ClientSampleId :  
 MH-6



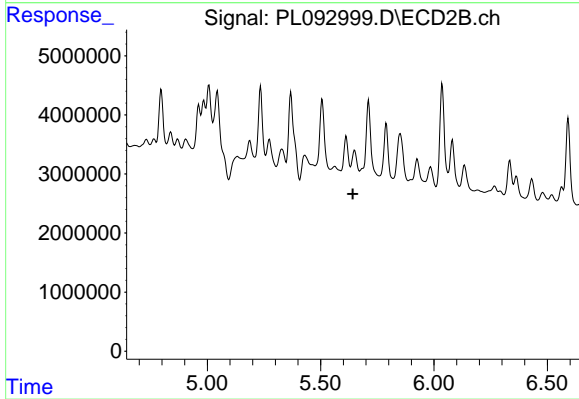
#13 Dieldrin

R.T.: 5.369 min  
 Delta R.T.: 0.003 min  
 Response: 16036841  
 Conc: 4.80 ng/ml



#14 Endrin

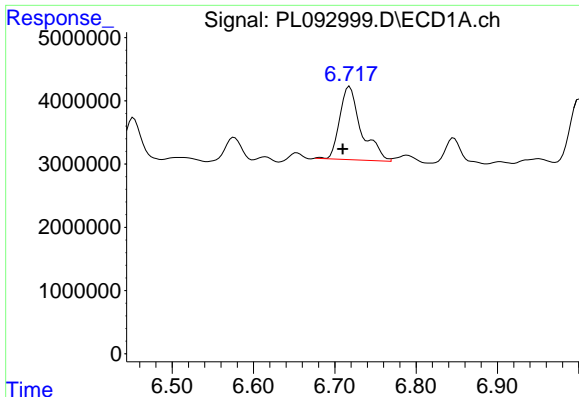
R.T.: 6.576 min  
 Delta R.T.: 0.002 min  
 Response: 4590216  
 Conc: 2.02 ng/ml



#14 Endrin

R.T.: 5.650 min  
 Delta R.T.: 0.008 min  
 Response: -673348  
 Conc: N.D.

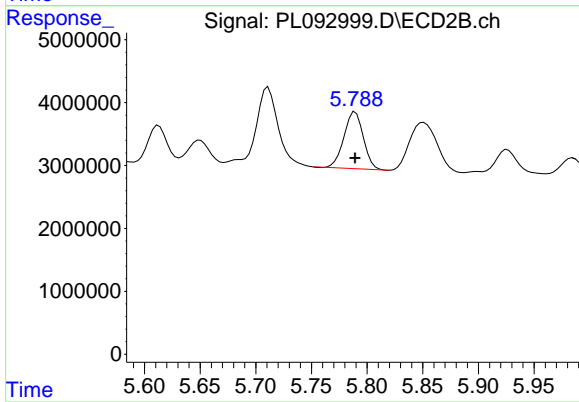




#16 4,4'-DDD

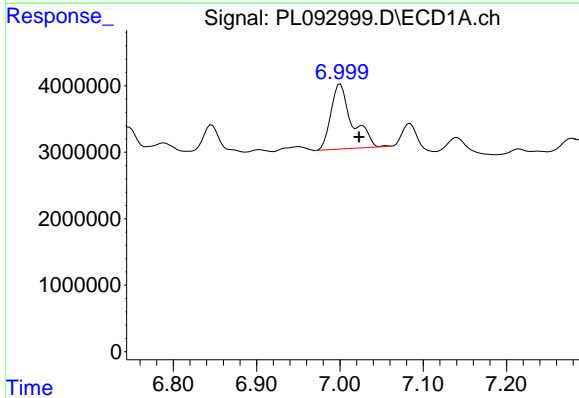
R.T.: 6.718 min  
 Delta R.T.: 0.009 min  
 Response: 21303409  
 Conc: 11.10 ng/ml

Instrument :  
 ECD\_L  
 ClientSampleId :  
 MH-6



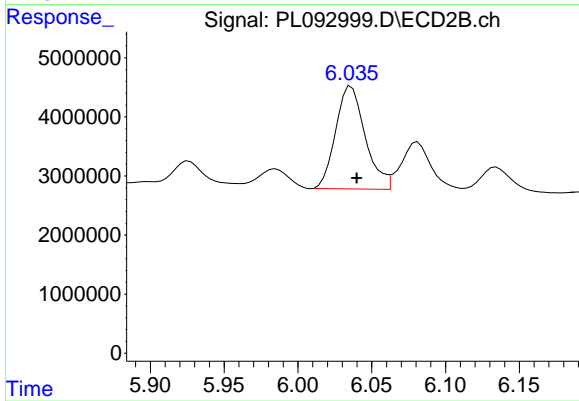
#16 4,4'-DDD

R.T.: 5.789 min  
 Delta R.T.: 0.000 min  
 Response: 10965202  
 Conc: 4.40 ng/ml



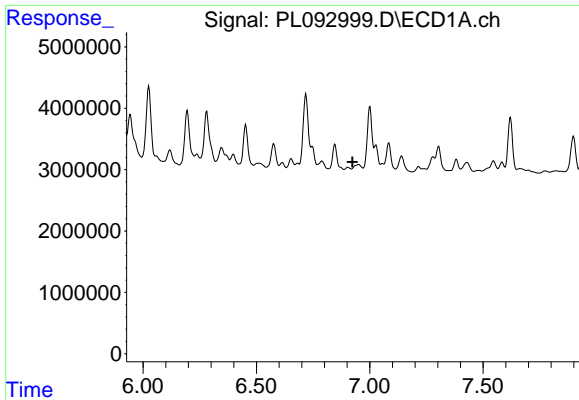
#17 4,4'-DDT

R.T.: 7.001 min  
 Delta R.T.: -0.022 min  
 Response: 17297580  
 Conc: 8.36 ng/ml



#17 4,4'-DDT

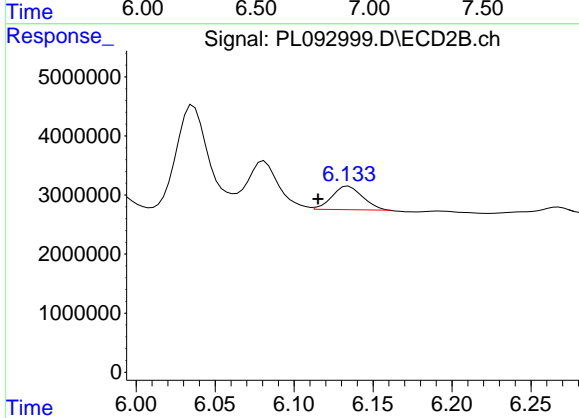
R.T.: 6.036 min  
 Delta R.T.: -0.004 min  
 Response: 24251409  
 Conc: 9.04 ng/ml



#18 Endrin aldehyde

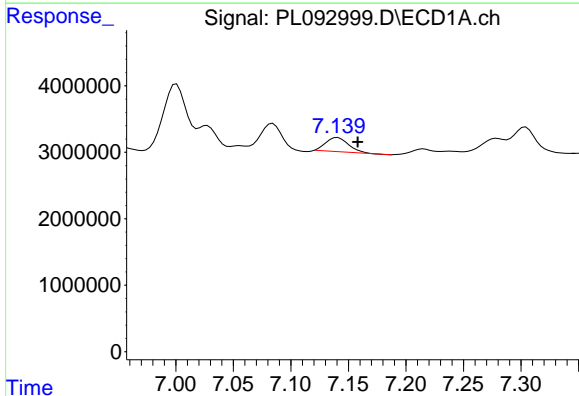
R.T.: 0.000 min  
 Exp R.T.: 6.924 min  
 Response: 0  
 Conc: N.D.

Instrument :  
 ECD\_L  
 ClientSampleId :  
 MH-6



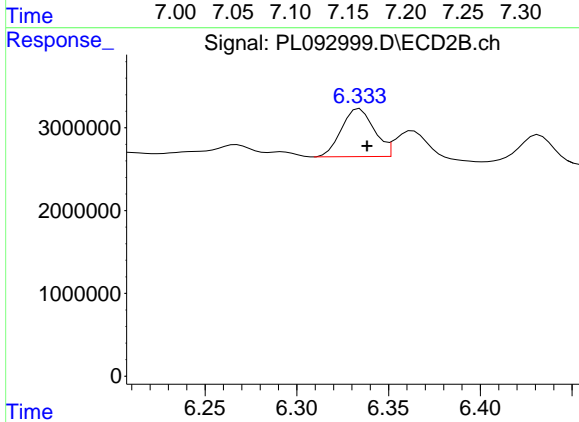
#18 Endrin aldehyde

R.T.: 6.135 min  
 Delta R.T.: 0.019 min  
 Response: 5344769  
 Conc: 2.32 ng/ml



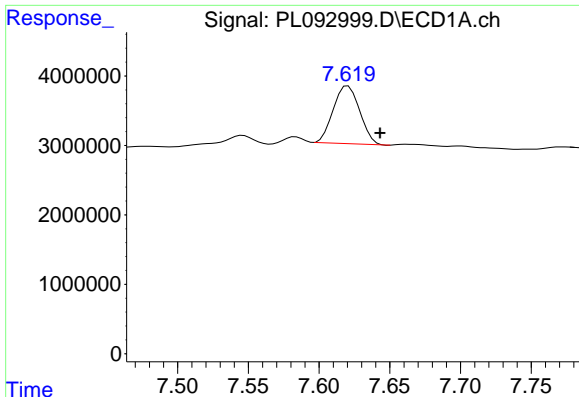
#19 Endosulfan Sulfate

R.T.: 7.141 min  
 Delta R.T.: -0.018 min  
 Response: 2926080  
 Conc: 1.35 ng/ml



#19 Endosulfan Sulfate

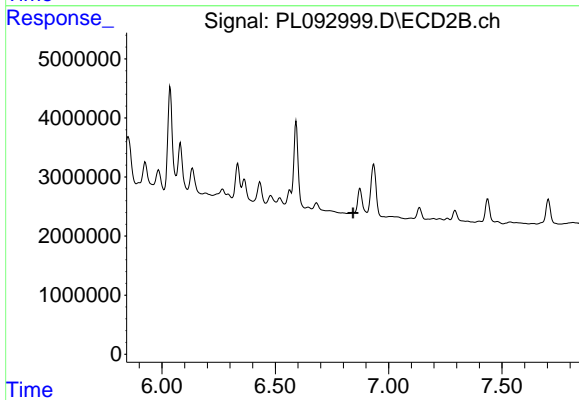
R.T.: 6.334 min  
 Delta R.T.: -0.004 min  
 Response: 7174585  
 Conc: 2.66 ng/ml



#21 Endrin ketone

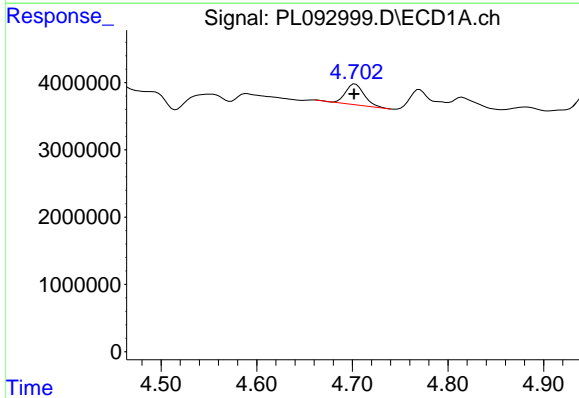
R.T.: 7.620 min  
 Delta R.T.: -0.023 min  
 Response: 10815743  
 Conc: 4.46 ng/ml

Instrument :  
 ECD\_L  
 ClientSampleId :  
 MH-6



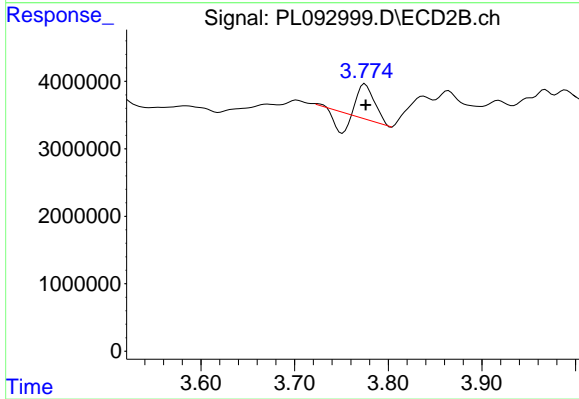
#21 Endrin ketone

R.T.: 0.000 min  
 Exp R.T. : 6.843 min  
 Response: 0  
 Conc: N.D.



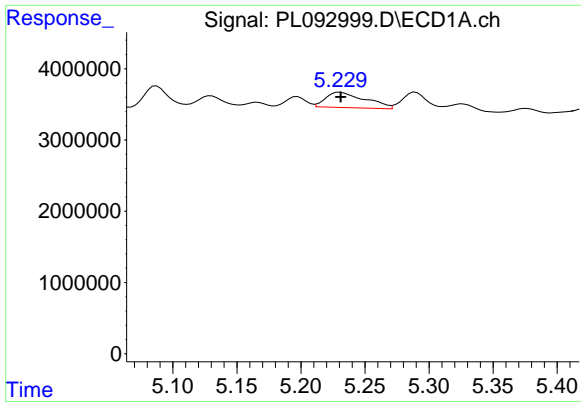
#23 Chlordane-1

R.T.: 4.703 min  
 Delta R.T.: 0.001 min  
 Response: 4034023  
 Conc: 36.68 ng/ml



#23 Chlordane-1

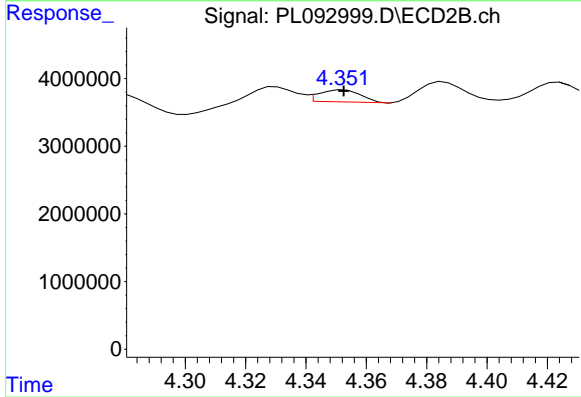
R.T.: 3.775 min  
 Delta R.T.: 0.000 min  
 Response: 4111478  
 Conc: 38.73 ng/ml



#24 Chlordane-2

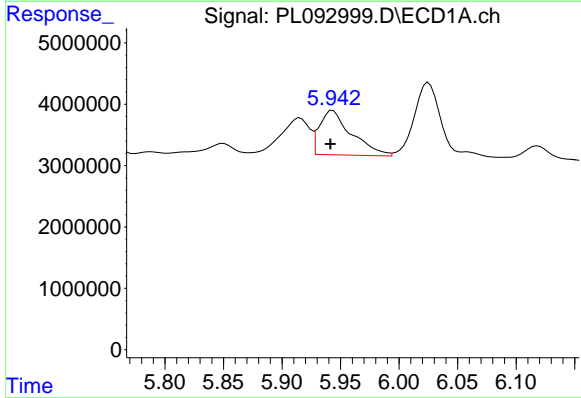
R.T.: 5.231 min  
 Delta R.T.: 0.000 min  
 Response: 4641406  
 Conc: 40.50 ng/ml

Instrument :  
 ECD\_L  
 ClientSampleId :  
 MH-6



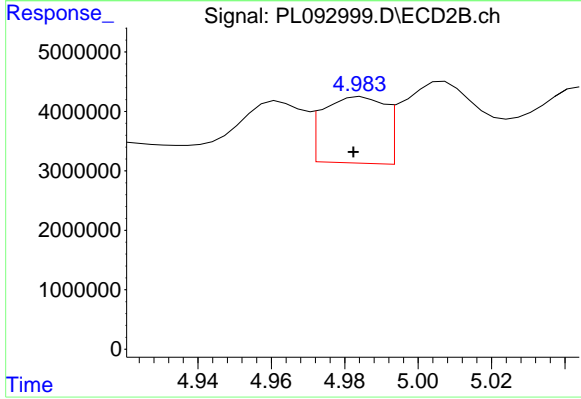
#24 Chlordane-2

R.T.: 4.352 min  
 Delta R.T.: 0.000 min  
 Response: 1705176  
 Conc: 13.77 ng/ml



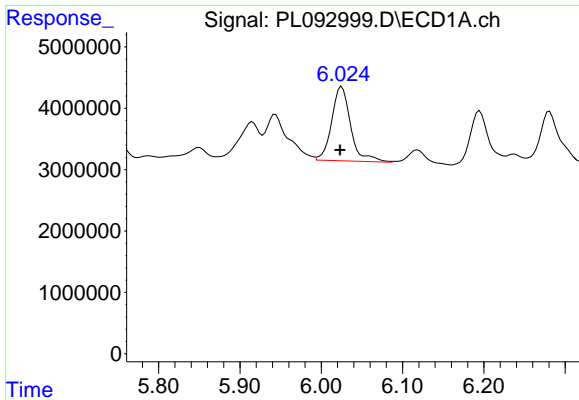
#25 Chlordane-3

R.T.: 5.943 min  
 Delta R.T.: 0.002 min  
 Response: 13742328  
 Conc: 35.21 ng/ml



#25 Chlordane-3

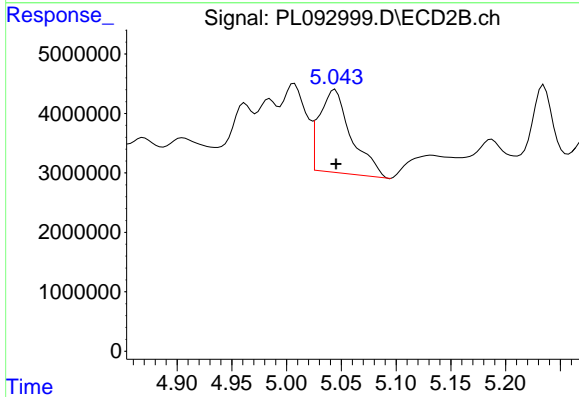
R.T.: 4.985 min  
 Delta R.T.: 0.002 min  
 Response: 13095061  
 Conc: 36.11 ng/ml



#26 Chlordane-4

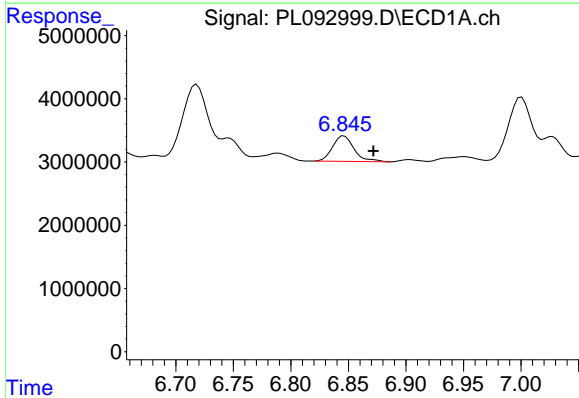
R.T.: 6.025 min  
 Delta R.T.: 0.002 min  
 Response: 19661578  
 Conc: 41.13 ng/ml

Instrument :  
 ECD\_L  
 ClientSampleId :  
 MH-6



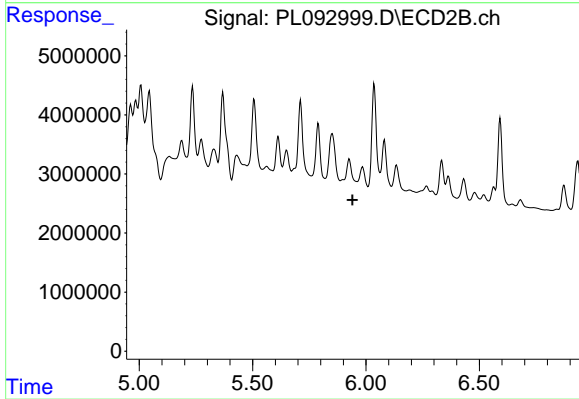
#26 Chlordane-4

R.T.: 5.044 min  
 Delta R.T.: 0.000 min  
 Response: 28288707  
 Conc: 80.87 ng/ml



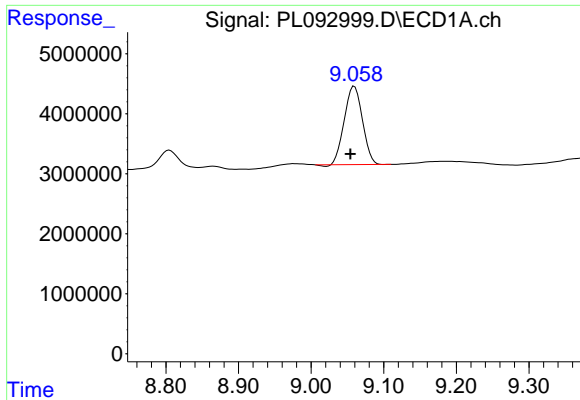
#27 Chlordane-5

R.T.: 6.846 min  
 Delta R.T.: -0.025 min  
 Response: 5244484  
 Conc: 55.40 ng/ml



#27 Chlordane-5

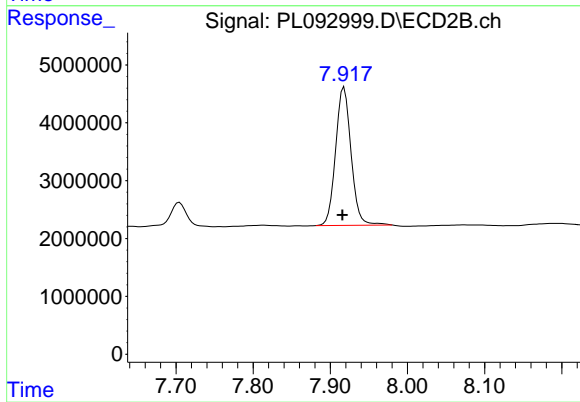
R.T.: 5.926 min  
 Delta R.T.: -0.015 min  
 Response: -8251919  
 Conc: N.D.



#28 Decachlorobiphenyl

R.T.: 9.060 min  
Delta R.T.: 0.006 min  
Response: 22590093  
Conc: 11.74 ng/ml

Instrument :  
ECD\_L  
ClientSampleId :  
MH-6



#28 Decachlorobiphenyl

R.T.: 7.918 min  
Delta R.T.: 0.002 min  
Response: 33359838  
Conc: 12.22 ng/ml