

Data Path : Z:\pestpcbsrv\HPCHEM1\ECD\_L\Data\PL111224\  
 Data File : PL093013.D  
 Signal(s) : Signal #1: ECD1A.ch Signal #2: ECD2B.ch  
 Acq On : 12 Nov 2024 16:09  
 Operator : AR\AJ  
 Sample : P4816-01  
 Misc :  
 ALS Vial : 20 Sample Multiplier: 1

Instrument :  
 ECD\_L  
 ClientSampleId :  
 331

Integration File signal 1: autoint1.e  
 Integration File signal 2: autoint2.e  
 Quant Time: Nov 13 00:46:04 2024  
 Quant Method : Z:\pestpcbsrv\HPCHEM1\ECD\_L\methods\PL102824.M  
 Quant Title : GC Extractables  
 QLast Update : Mon Oct 28 18:58:23 2024  
 Response via : Initial Calibration  
 Integrator: ChemStation

Volume Inj. : 1 µl  
 Signal #1 Phase : ZB-MR2 Signal #2 Phase: ZB-MR1  
 Signal #1 Info : 30M x 0.32mm x0.2 Signal #2 Info : 30M x 0.32mm x0.5µm

Compound	RT#1	RT#2	Resp#1	Resp#2	ng/ml	ng/ml
-----						
System Monitoring Compounds						
1) SA Tetrachlo...	3.541	2.778	31660935	36310496	12.922	13.344
28) SA Decachlor...	9.058	7.917	23614474	33830166	12.270	12.395
Target Compounds						
3) MA gamma-BHC...	0.000	3.603	0	60262	N.D.	0.016 #
4) MA Heptachlor	0.000	3.973f	0	1377464	N.D.	0.365 #
5) MB Aldrin	5.228f	4.217	2426635	1372934	0.808	0.375 #
7) B delta-BHC	0.000	4.124f	0	578056	N.D.	0.150 #
8) B Heptachlo...	0.000	4.735	0	486996	N.D.	0.146 #
9) A Endosulfan I	0.000	5.123f	0	1290194	N.D.	0.423 #
10) B gamma-Chl...	5.943	4.983	9886391	9835691	3.716	2.926
11) B alpha-Chl...	6.024	5.046	15134875	15595909	5.715	4.689
12) B 4,4'-DDE	6.194	5.235	10993220	16583686	4.640	5.148
13) MA Dieldrin	0.000	5.368	0	6923816	N.D.	2.073 #
14) MA Endrin	0.000	5.650	0	1689153	N.D.	0.584 #
16) A 4,4'-DDD	6.720	5.788	3657630	1280864	1.905	0.514 #
17) MA 4,4'-DDT	7.026	6.039	12158140	17834463	5.874	6.649
18) B Endrin al...	0.000	6.133f	0	1582571	N.D.	0.686 #
19) B Endosulfa...	0.000	6.333	0	1756473	N.D.	0.651 #
20) A Methoxychlor	0.000	6.592f	0	2072012	N.D.	1.451 #
21) B Endrin ke...	7.619f	6.822f	6613771	806687	2.730	0.263 #
24) Chlordane-2	5.228	4.355	2426635	1438071	21.172	11.611 #
25) Chlordane-3	5.943	4.983	9886391	9835691	25.329	27.119
26) Chlordane-4	6.024	5.046	15134875	15595909	31.663	44.583 #
27) Chlordane-5	6.874	5.938	1422815	-367364	15.031	N.D. #

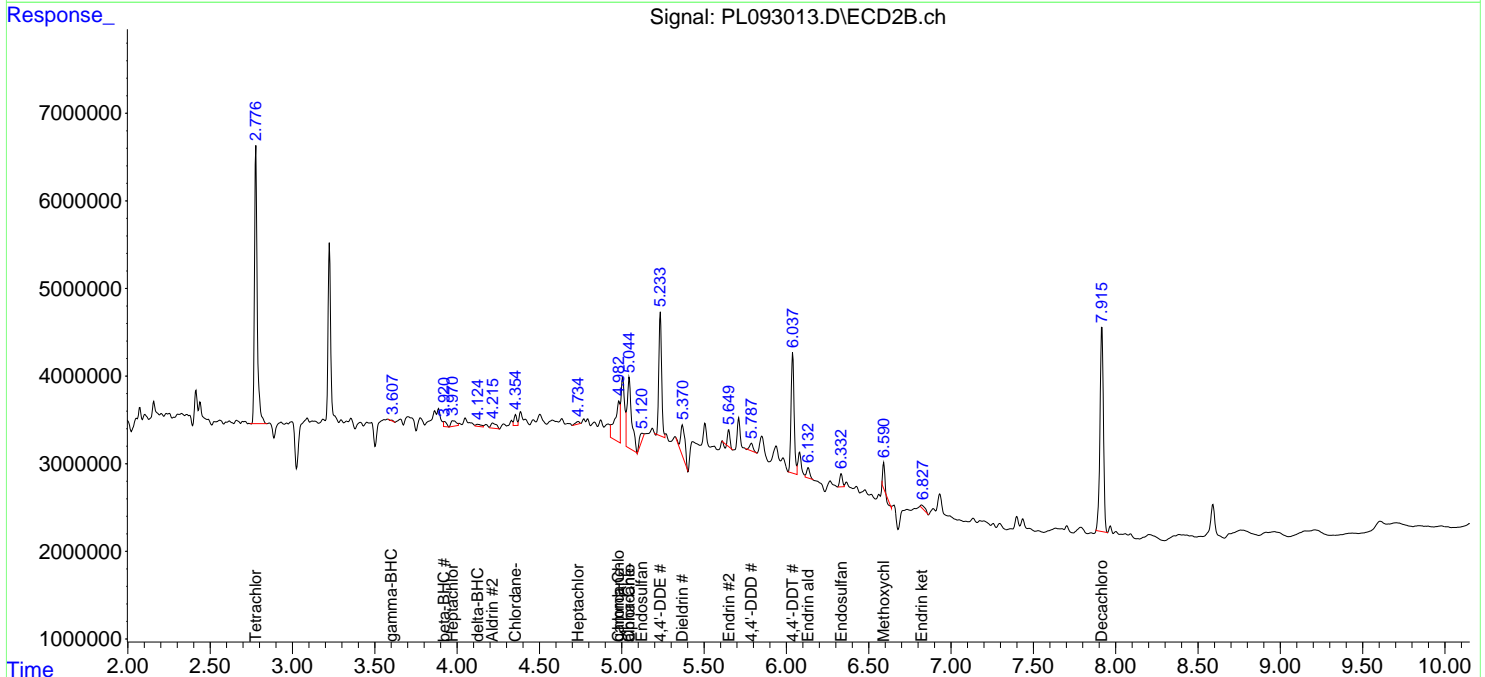
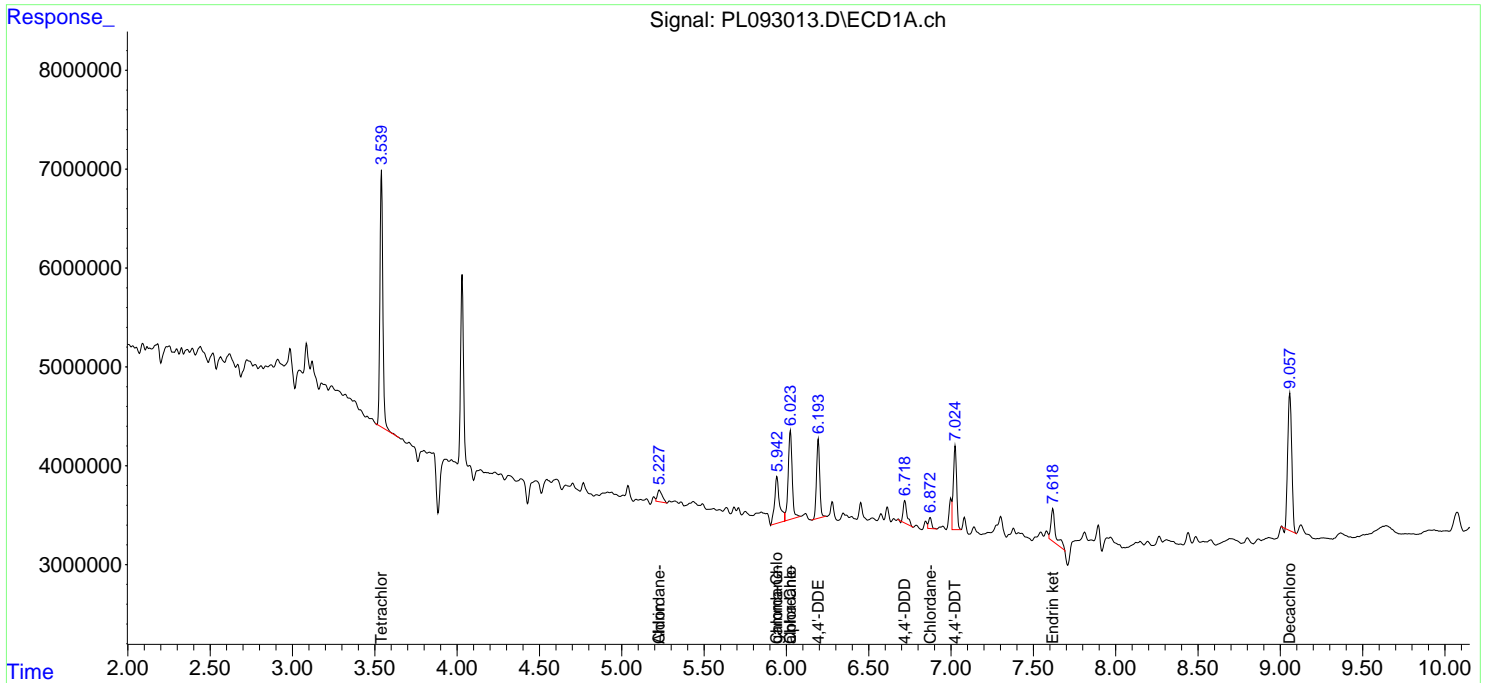
(f)=RT Delta > 1/2 Window (#)=Amounts differ by > 25% (m)=manual int.

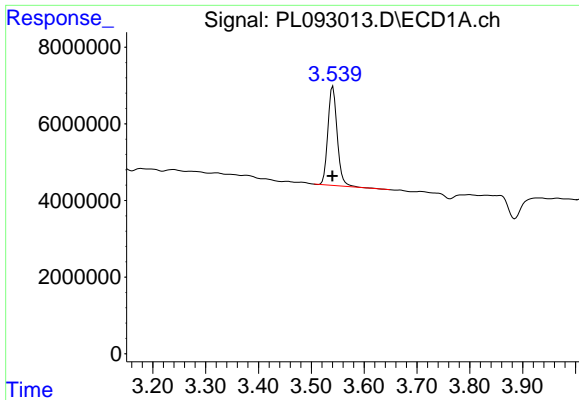
Data Path : Z:\pestpcbsrv\HPCHEM1\ECD\_L\Data\PL111224\  
 Data File : PL093013.D  
 Signal(s) : Signal #1: ECD1A.ch Signal #2: ECD2B.ch  
 Acq On : 12 Nov 2024 16:09  
 Operator : AR\AJ  
 Sample : P4816-01  
 Misc :  
 ALS Vial : 20 Sample Multiplier: 1

Instrument :  
 ECD\_L  
 ClientSampleId :  
 331

Integration File signal 1: autoint1.e  
 Integration File signal 2: autoint2.e  
 Quant Time: Nov 13 00:46:04 2024  
 Quant Method : Z:\pestpcbsrv\HPCHEM1\ECD\_L\methods\PL102824.M  
 Quant Title : GC Extractables  
 QLast Update : Mon Oct 28 18:58:23 2024  
 Response via : Initial Calibration  
 Integrator: ChemStation

Volume Inj. : 1 µl  
 Signal #1 Phase : ZB-MR2 Signal #2 Phase: ZB-MR1  
 Signal #1 Info : 30M x 0.32mm x0.2 Signal #2 Info : 30M x 0.32mm x0.5µm

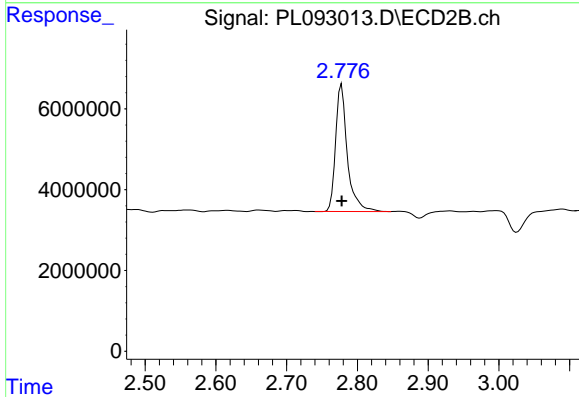




#1 Tetrachloro-m-xylene

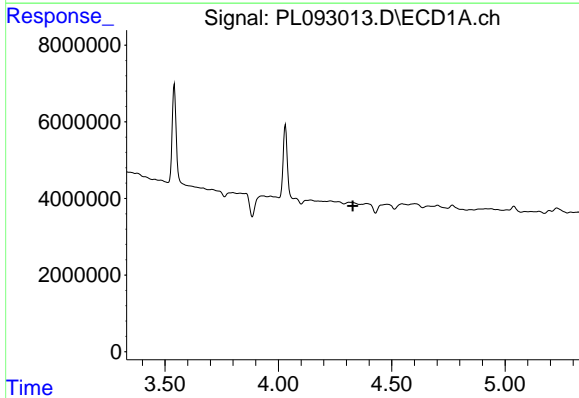
R.T.: 3.541 min  
 Delta R.T.: 0.000 min  
 Response: 31660935  
 Conc: 12.92 ng/ml

Instrument :  
 ECD\_L  
 ClientSampleId :  
 331



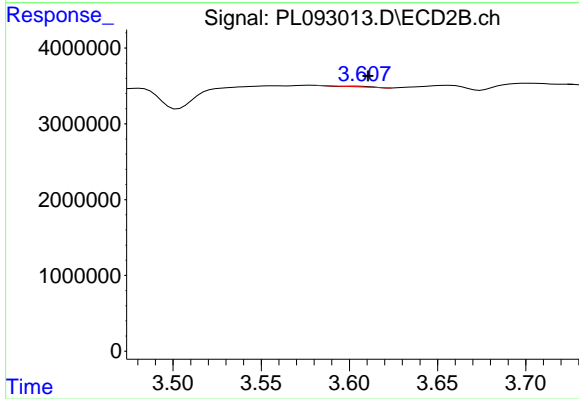
#1 Tetrachloro-m-xylene

R.T.: 2.778 min  
 Delta R.T.: 0.000 min  
 Response: 36310496  
 Conc: 13.34 ng/ml



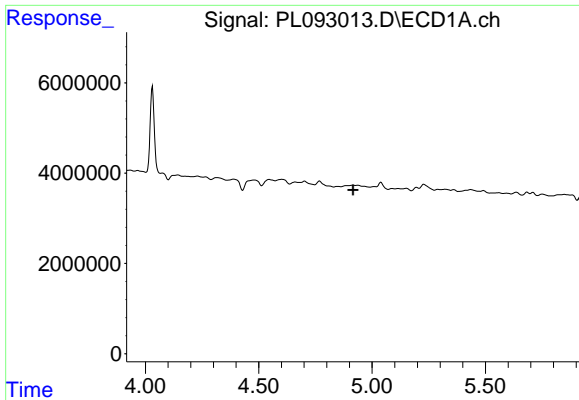
#3 gamma-BHC (Lindane)

R.T.: 0.000 min  
 Exp R.T. : 4.328 min  
 Response: 0  
 Conc: N.D.



#3 gamma-BHC (Lindane)

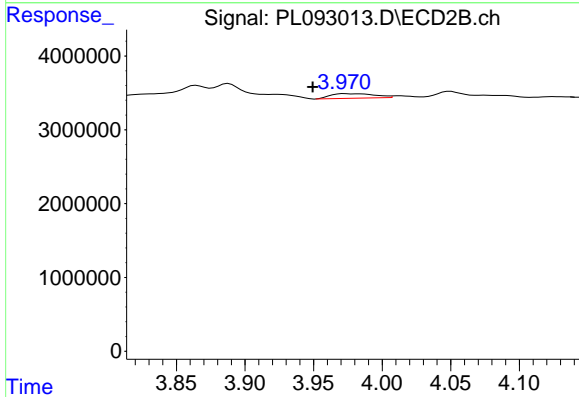
R.T.: 3.603 min  
 Delta R.T.: -0.008 min  
 Response: 60262  
 Conc: 0.02 ng/ml



#4 Heptachlor

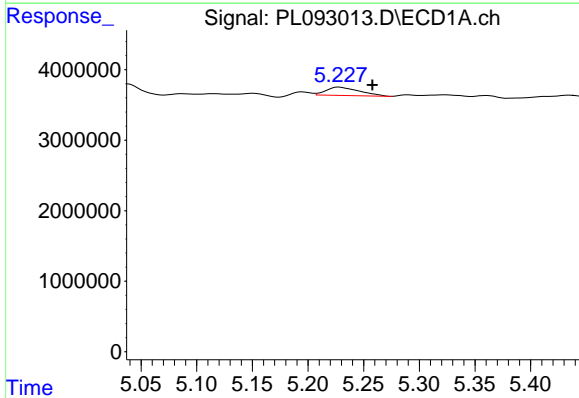
R.T.: 0.000 min  
 Exp R.T.: 4.917 min  
 Response: 0  
 Conc: N.D.

Instrument :  
 ECD\_L  
 ClientSampleId :  
 331



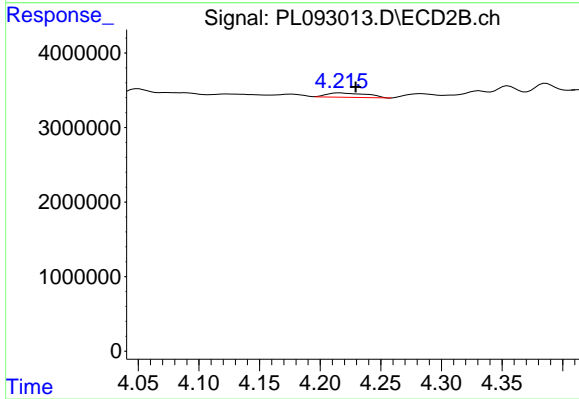
#4 Heptachlor

R.T.: 3.973 min  
 Delta R.T.: 0.024 min  
 Response: 1377464  
 Conc: 0.36 ng/ml



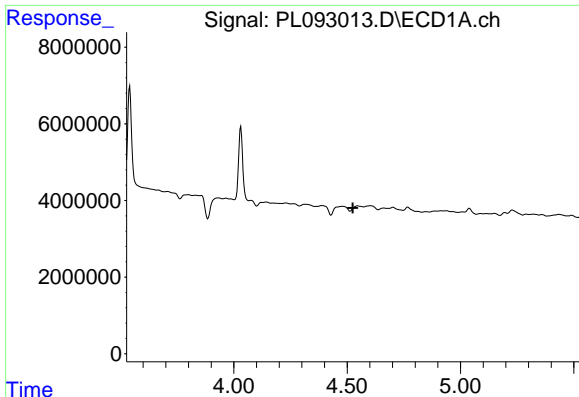
#5 Aldrin

R.T.: 5.228 min  
 Delta R.T.: -0.030 min  
 Response: 2426635  
 Conc: 0.81 ng/ml



#5 Aldrin

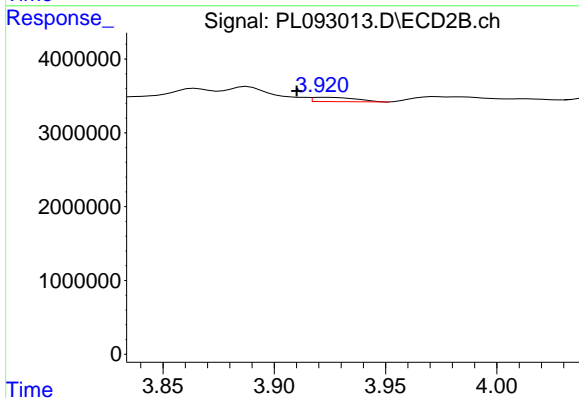
R.T.: 4.217 min  
 Delta R.T.: -0.013 min  
 Response: 1372934  
 Conc: 0.38 ng/ml



#6 beta-BHC

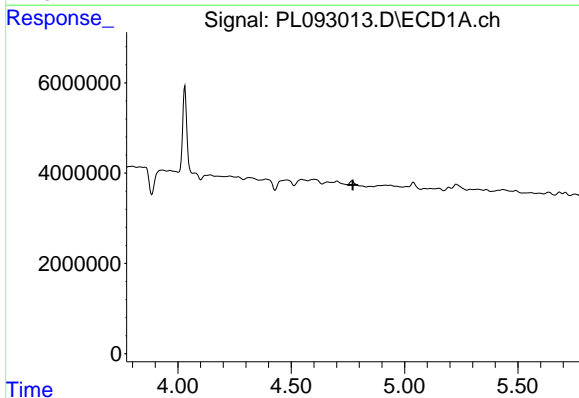
R.T.: 4.546 min  
 Delta R.T.: 0.021 min  
 Response: -1070999  
 Conc: N.D.

Instrument :  
 ECD\_L  
 ClientSampleId :  
 331



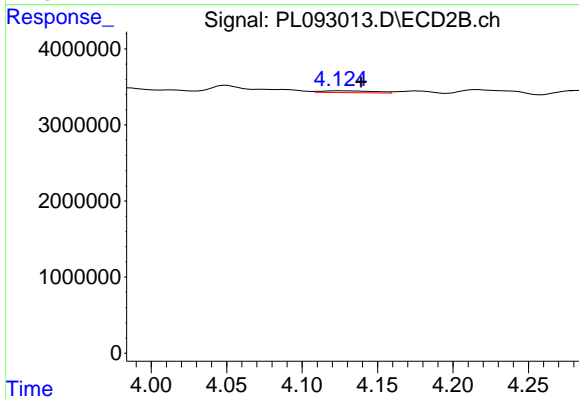
#6 beta-BHC

R.T.: 3.923 min  
 Delta R.T.: 0.012 min  
 Response: 791491  
 Conc: 0.48 ng/ml



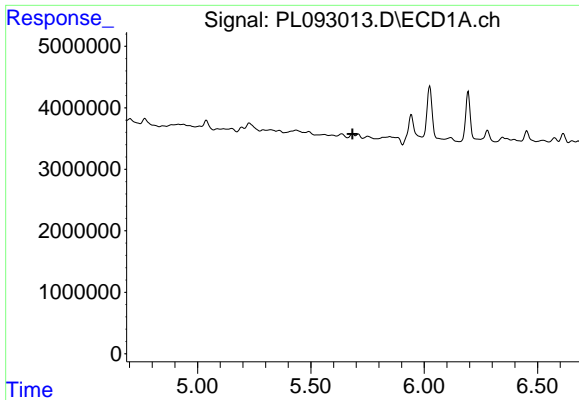
#7 delta-BHC

R.T.: 0.000 min  
 Exp R.T. : 4.772 min  
 Response: 0  
 Conc: N.D.



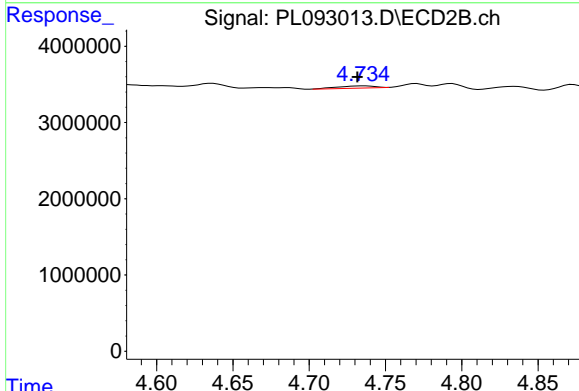
#7 delta-BHC

R.T.: 4.124 min  
 Delta R.T.: -0.015 min  
 Response: 578056  
 Conc: 0.15 ng/ml

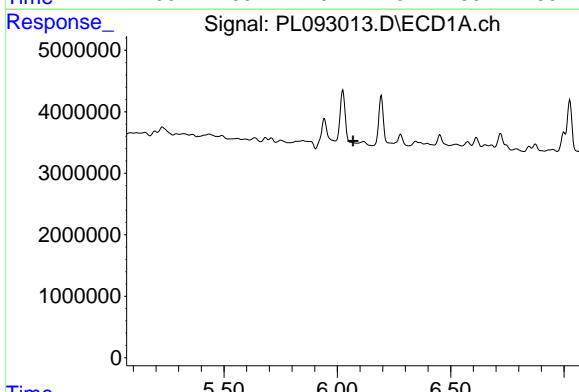


#8 Heptachlor epoxide  
 R.T.: 0.000 min  
 Exp R.T.: 5.684 min  
 Response: 0  
 Conc: N.D.

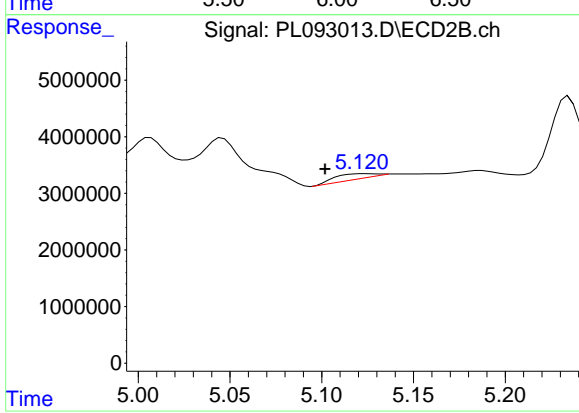
Instrument : ECD\_L  
 ClientSampleId : 331



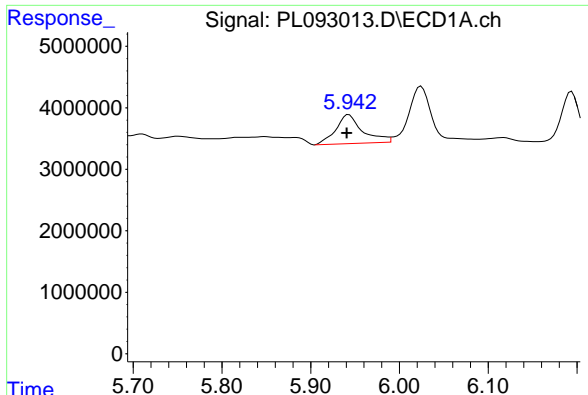
#8 Heptachlor epoxide  
 R.T.: 4.735 min  
 Delta R.T.: 0.004 min  
 Response: 486996  
 Conc: 0.15 ng/ml



#9 Endosulfan I  
 R.T.: 0.000 min  
 Exp R.T.: 6.070 min  
 Response: 0  
 Conc: N.D.



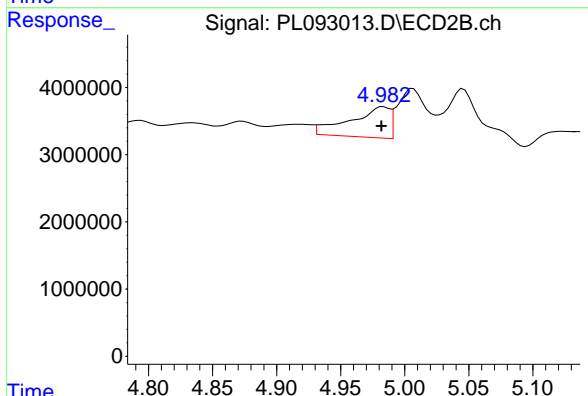
#9 Endosulfan I  
 R.T.: 5.123 min  
 Delta R.T.: 0.022 min  
 Response: 1290194  
 Conc: 0.42 ng/ml



#10 gamma-Chlordane

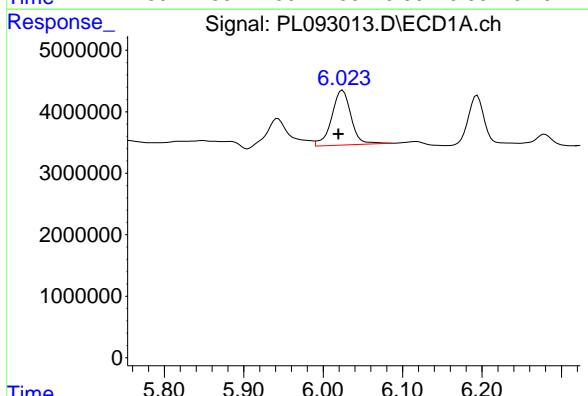
R.T.: 5.943 min  
 Delta R.T.: 0.002 min  
 Response: 9886391  
 Conc: 3.72 ng/ml

Instrument :  
 ECD\_L  
 ClientSampleId :  
 331



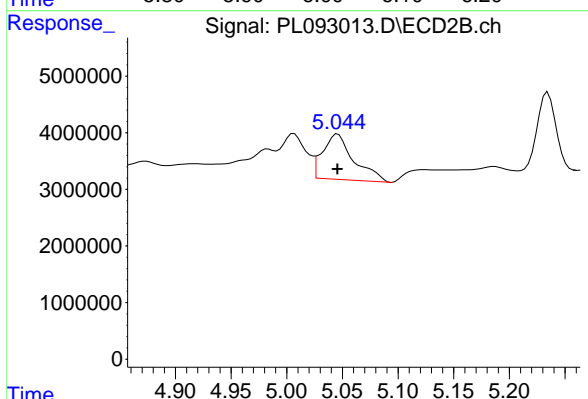
#10 gamma-Chlordane

R.T.: 4.983 min  
 Delta R.T.: 0.001 min  
 Response: 9835691  
 Conc: 2.93 ng/ml



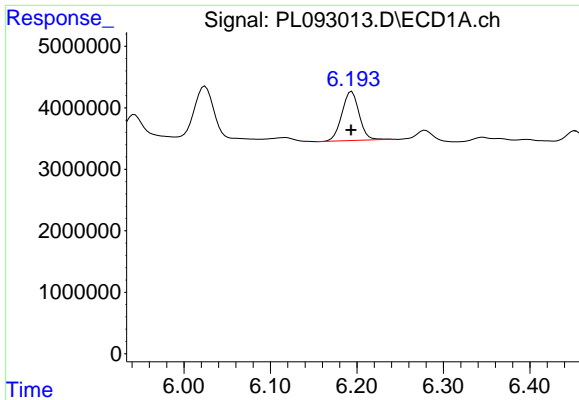
#11 alpha-Chlordane

R.T.: 6.024 min  
 Delta R.T.: 0.005 min  
 Response: 15134875  
 Conc: 5.72 ng/ml



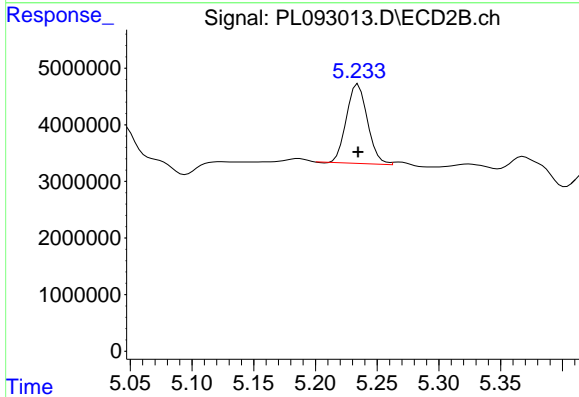
#11 alpha-Chlordane

R.T.: 5.046 min  
 Delta R.T.: 0.000 min  
 Response: 15595909  
 Conc: 4.69 ng/ml

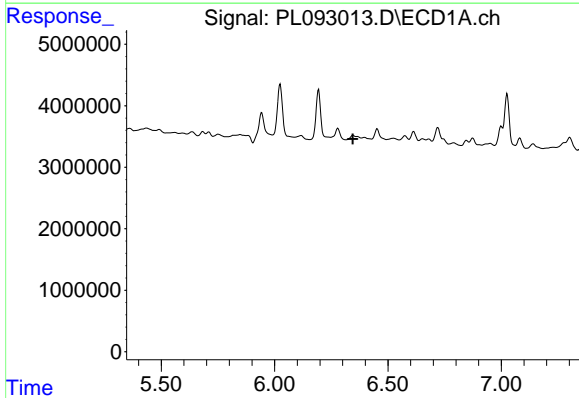


#12 4,4'-DDE  
 R.T.: 6.194 min  
 Delta R.T.: 0.000 min  
 Response: 10993220  
 Conc: 4.64 ng/ml

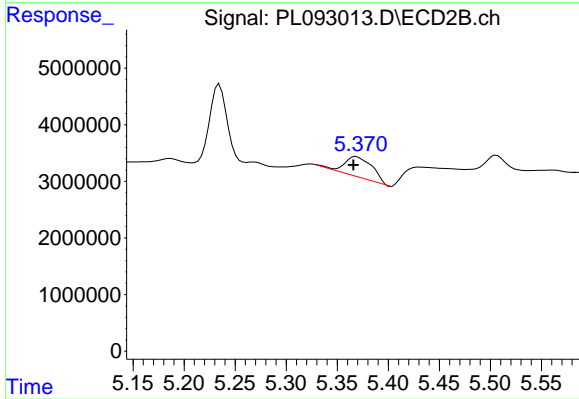
Instrument :  
 ECD\_L  
 ClientSampleId :  
 331



#12 4,4'-DDE  
 R.T.: 5.235 min  
 Delta R.T.: 0.000 min  
 Response: 16583686  
 Conc: 5.15 ng/ml

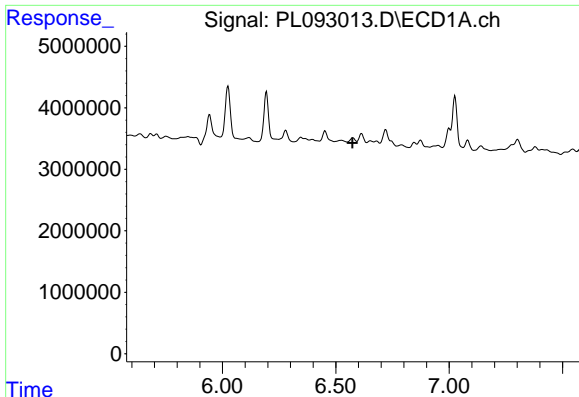


#13 Dieldrin  
 R.T.: 0.000 min  
 Exp R.T. : 6.345 min  
 Response: 0  
 Conc: N.D.



#13 Dieldrin  
 R.T.: 5.368 min  
 Delta R.T.: 0.003 min  
 Response: 6923816  
 Conc: 2.07 ng/ml

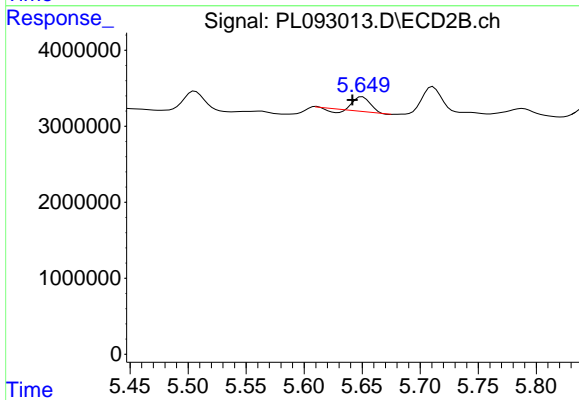




#14 Endrin

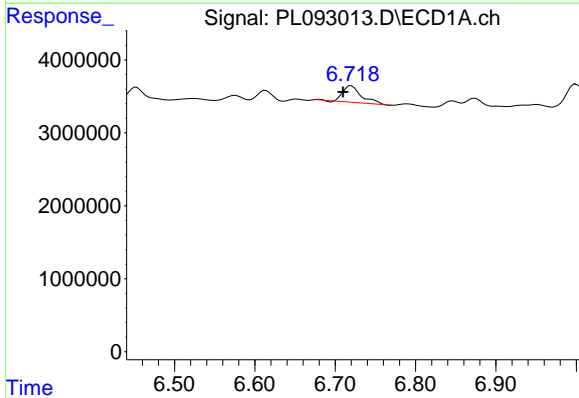
R.T.: 0.000 min  
 Exp R.T.: 6.574 min  
 Response: 0  
 Conc: N.D.

Instrument :  
 ECD\_L  
 ClientSampleId :  
 331



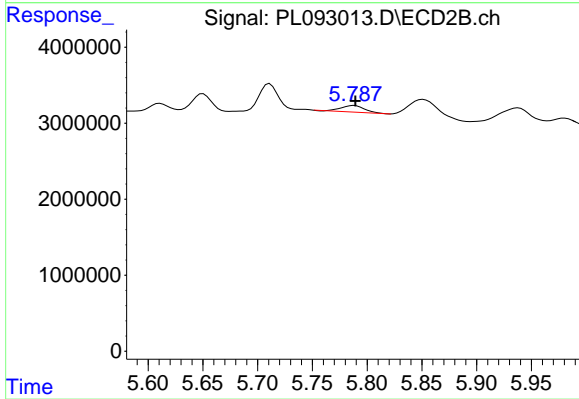
#14 Endrin

R.T.: 5.650 min  
 Delta R.T.: 0.009 min  
 Response: 1689153  
 Conc: 0.58 ng/ml



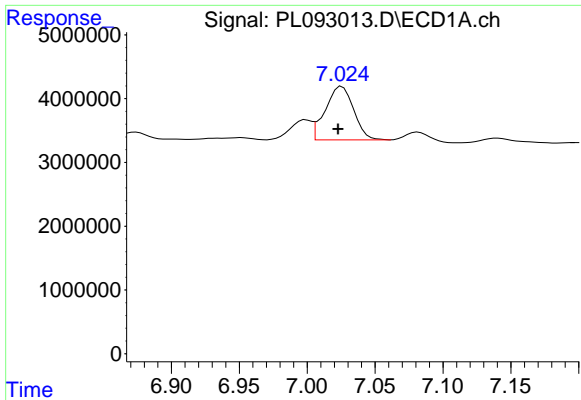
#16 4,4'-DDD

R.T.: 6.720 min  
 Delta R.T.: 0.010 min  
 Response: 3657630  
 Conc: 1.91 ng/ml



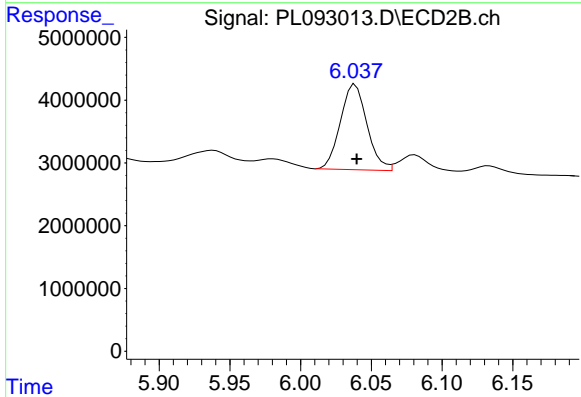
#16 4,4'-DDD

R.T.: 5.788 min  
 Delta R.T.: 0.000 min  
 Response: 1280864  
 Conc: 0.51 ng/ml

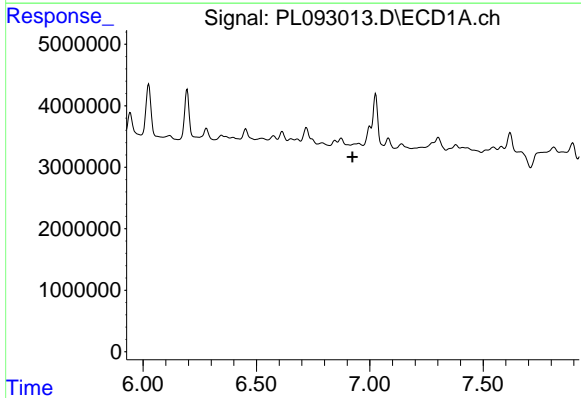


#17 4,4'-DDT  
 R.T.: 7.026 min  
 Delta R.T.: 0.003 min  
 Response: 12158140  
 Conc: 5.87 ng/ml

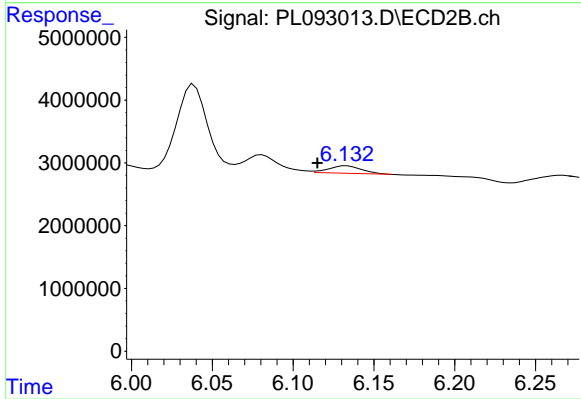
Instrument :  
 ECD\_L  
 ClientSampleId :  
 331



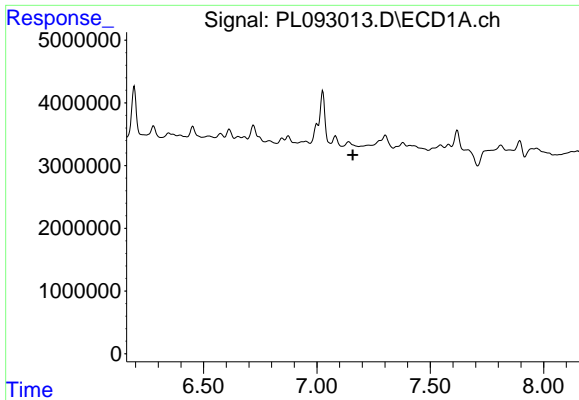
#17 4,4'-DDT  
 R.T.: 6.039 min  
 Delta R.T.: -0.001 min  
 Response: 17834463  
 Conc: 6.65 ng/ml



#18 Endrin aldehyde  
 R.T.: 0.000 min  
 Exp R.T. : 6.924 min  
 Response: 0  
 Conc: N.D.



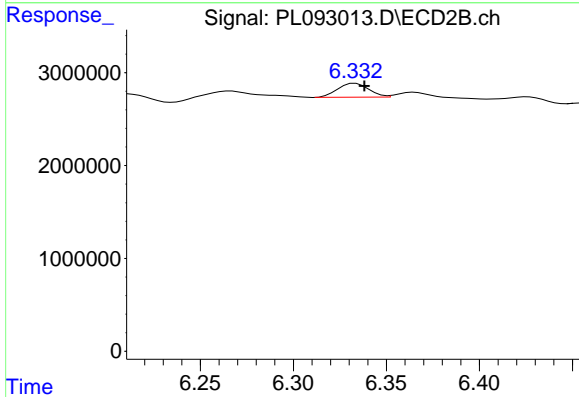
#18 Endrin aldehyde  
 R.T.: 6.133 min  
 Delta R.T.: 0.018 min  
 Response: 1582571  
 Conc: 0.69 ng/ml



#19 Endosulfan Sulfate

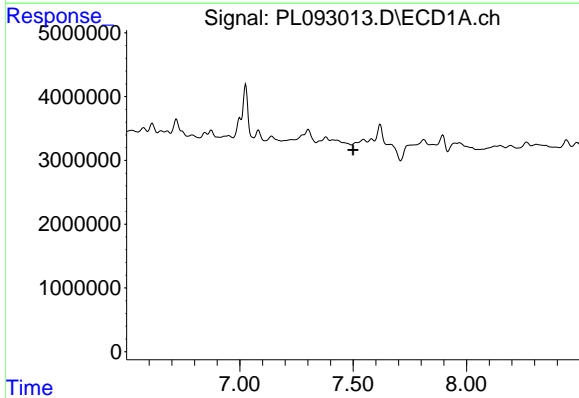
R.T.: 0.000 min  
 Exp R.T. : 7.158 min  
 Response: 0  
 Conc: N.D.

Instrument :  
 ECD\_L  
 ClientSampleId :  
 331



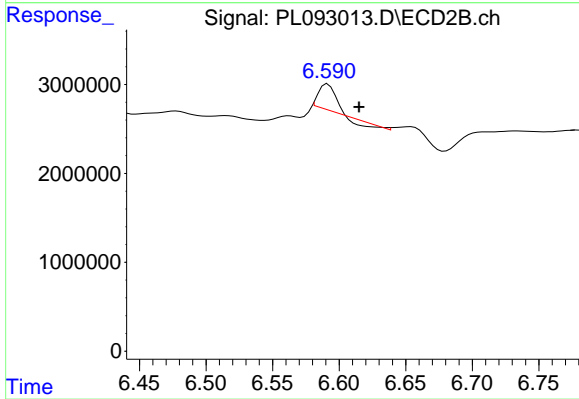
#19 Endosulfan Sulfate

R.T.: 6.333 min  
 Delta R.T.: -0.005 min  
 Response: 1756473  
 Conc: 0.65 ng/ml



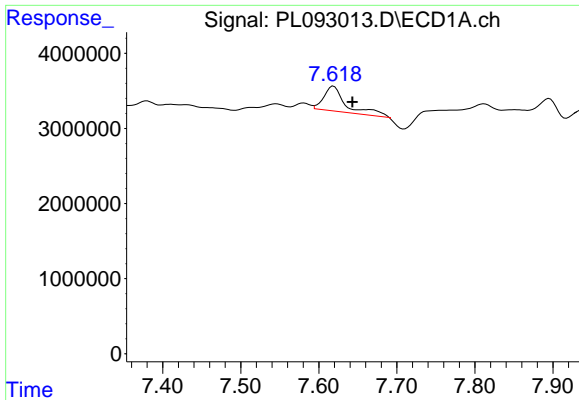
#20 Methoxychlor

R.T.: 0.000 min  
 Exp R.T. : 7.499 min  
 Response: 0  
 Conc: N.D.



#20 Methoxychlor

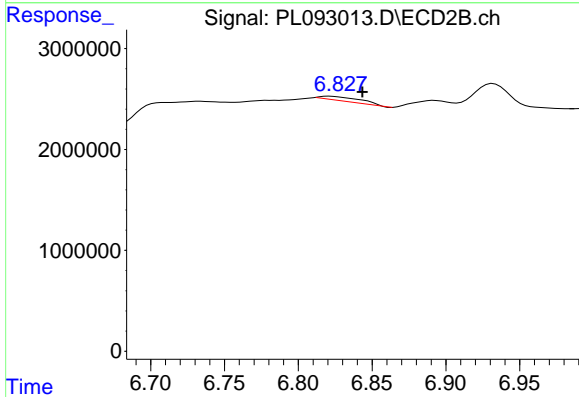
R.T.: 6.592 min  
 Delta R.T.: -0.023 min  
 Response: 2072012  
 Conc: 1.45 ng/ml



#21 Endrin ketone

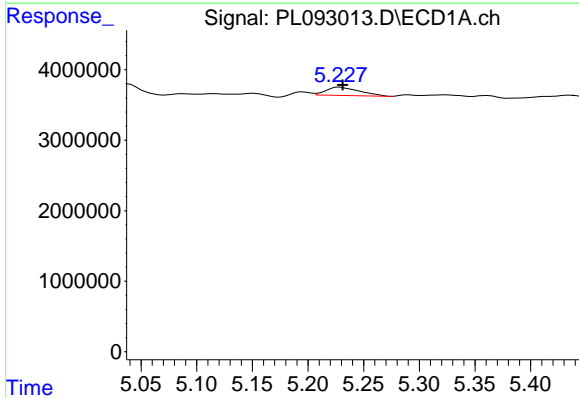
R.T.: 7.619 min  
 Delta R.T.: -0.024 min  
 Response: 6613771  
 Conc: 2.73 ng/ml

Instrument :  
 ECD\_L  
 ClientSampleId :  
 331



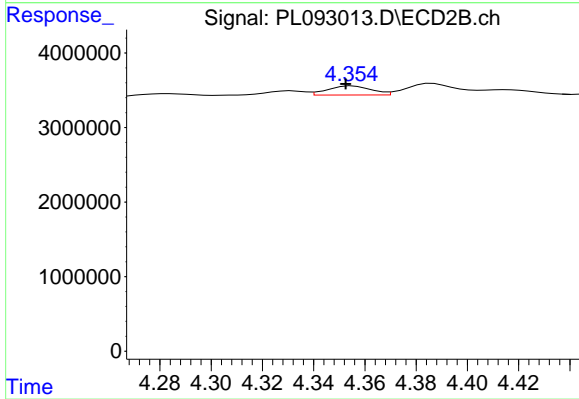
#21 Endrin ketone

R.T.: 6.822 min  
 Delta R.T.: -0.022 min  
 Response: 806687  
 Conc: 0.26 ng/ml



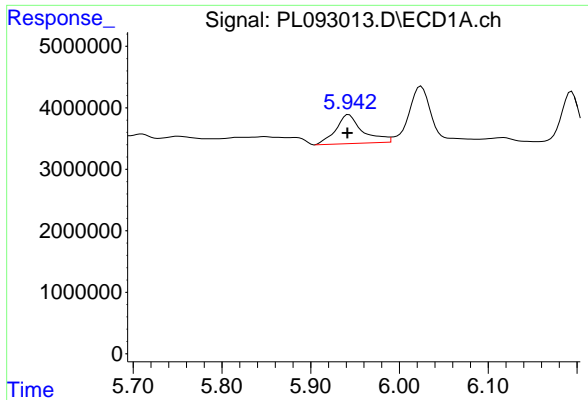
#24 Chlordane-2

R.T.: 5.228 min  
 Delta R.T.: -0.003 min  
 Response: 2426635  
 Conc: 21.17 ng/ml



#24 Chlordane-2

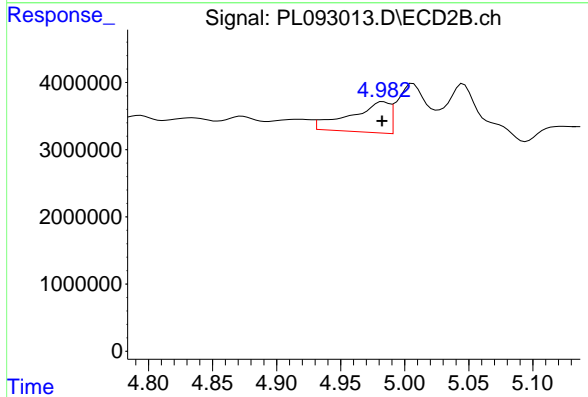
R.T.: 4.355 min  
 Delta R.T.: 0.003 min  
 Response: 1438071  
 Conc: 11.61 ng/ml



#25 Chlordane-3

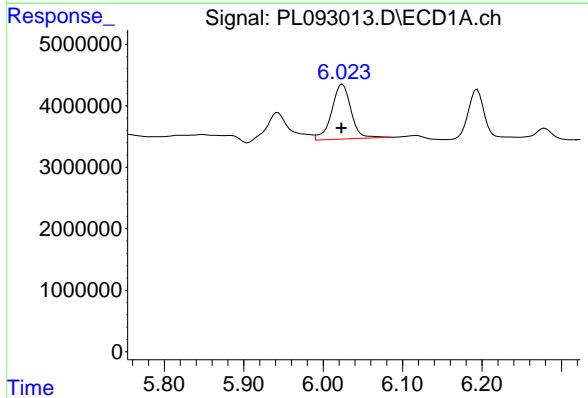
R.T.: 5.943 min  
 Delta R.T.: 0.002 min  
 Response: 9886391  
 Conc: 25.33 ng/ml

Instrument :  
 ECD\_L  
 ClientSampleId :  
 331



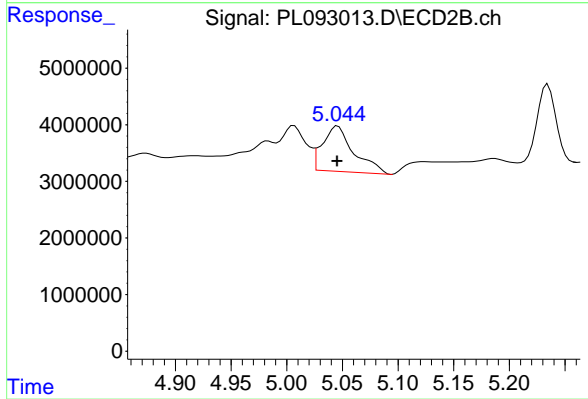
#25 Chlordane-3

R.T.: 4.983 min  
 Delta R.T.: 0.000 min  
 Response: 9835691  
 Conc: 27.12 ng/ml



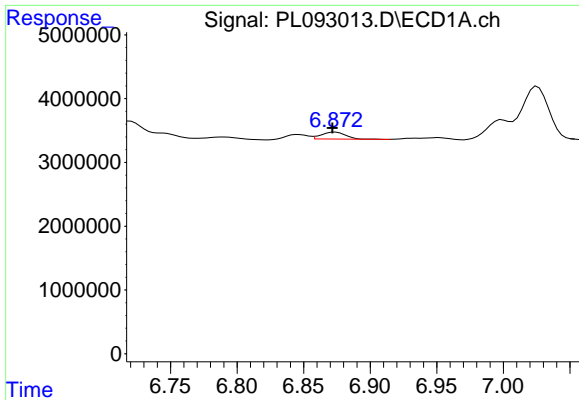
#26 Chlordane-4

R.T.: 6.024 min  
 Delta R.T.: 0.001 min  
 Response: 15134875  
 Conc: 31.66 ng/ml



#26 Chlordane-4

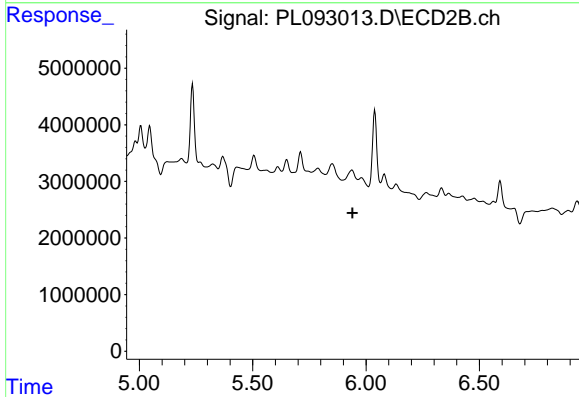
R.T.: 5.046 min  
 Delta R.T.: 0.000 min  
 Response: 15595909  
 Conc: 44.58 ng/ml



#27 Chlordane-5

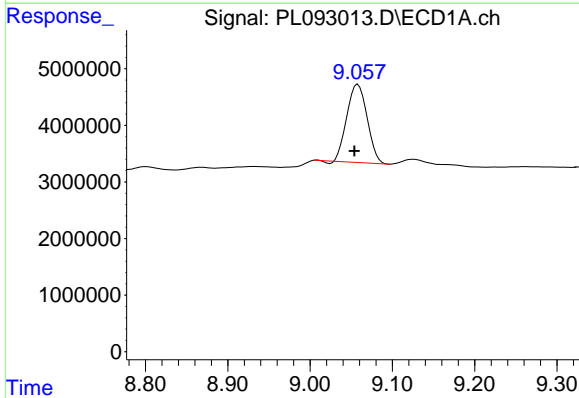
R.T.: 6.874 min  
 Delta R.T.: 0.002 min  
 Response: 1422815  
 Conc: 15.03 ng/ml

Instrument :  
 ECD\_L  
 ClientSampleId :  
 331



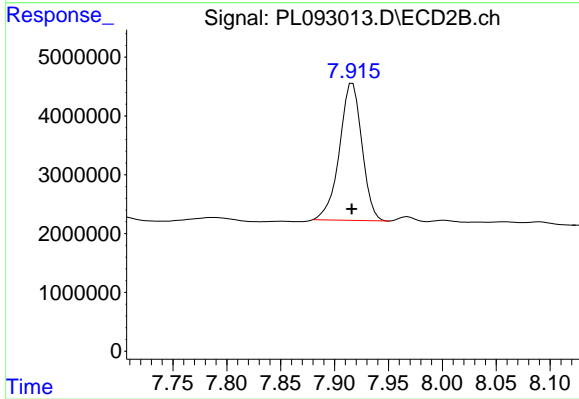
#27 Chlordane-5

R.T.: 5.938 min  
 Delta R.T.: -0.003 min  
 Response: -367364  
 Conc: N.D.



#28 Decachlorobiphenyl

R.T.: 9.058 min  
 Delta R.T.: 0.004 min  
 Response: 23614474  
 Conc: 12.27 ng/ml



#28 Decachlorobiphenyl

R.T.: 7.917 min  
 Delta R.T.: 0.000 min  
 Response: 33830166  
 Conc: 12.40 ng/ml