

Data Path : Z:\pestpcbsrv\HPCHEM1\ECD\_L\Data\PL111320\  
 Data File : PL063021.D  
 Signal(s) : Signal #1: ECD1A.ch Signal #2: ECD2B.ch  
 Acq On : 13 Nov 2020 15:27  
 Operator : DD\AJ  
 Sample : L4719-04  
 Misc :  
 ALS Vial : 18 Sample Multiplier: 1

Instrument :  
 ECD\_L  
 ClientSampleId :  
 TP-3-S

Integration File signal 1: autoint1.e  
 Integration File signal 2: autoint2.e  
 Quant Time: Nov 13 16:54:09 2020  
 Quant Method : Z:\pestpcbsrv\HPCHEM1\ECD\_L\methods\PL102120.M  
 Quant Title : GC Extractables  
 QLast Update : Thu Oct 22 04:25:31 2020  
 Response via : Initial Calibration  
 Integrator: ChemStation

Volume Inj. : 1 µl  
 Signal #1 Phase : ZB-MR2 Signal #2 Phase: ZB-MR1  
 Signal #1 Info : 30M x 0.32mm x0.2 Signal #2 Info : 30M x 0.32mm x0.5µm

Compound	RT#1	RT#2	Resp#1	Resp#2	ng/ml	ng/ml
-----						
System Monitoring Compounds						
1) SA Tetrachlo...	3.411	3.951	34320868	63095657	19.953	21.470
28) SA Decachlor...	8.128	8.992	31507522	40257490	19.640	19.235

Target Compounds

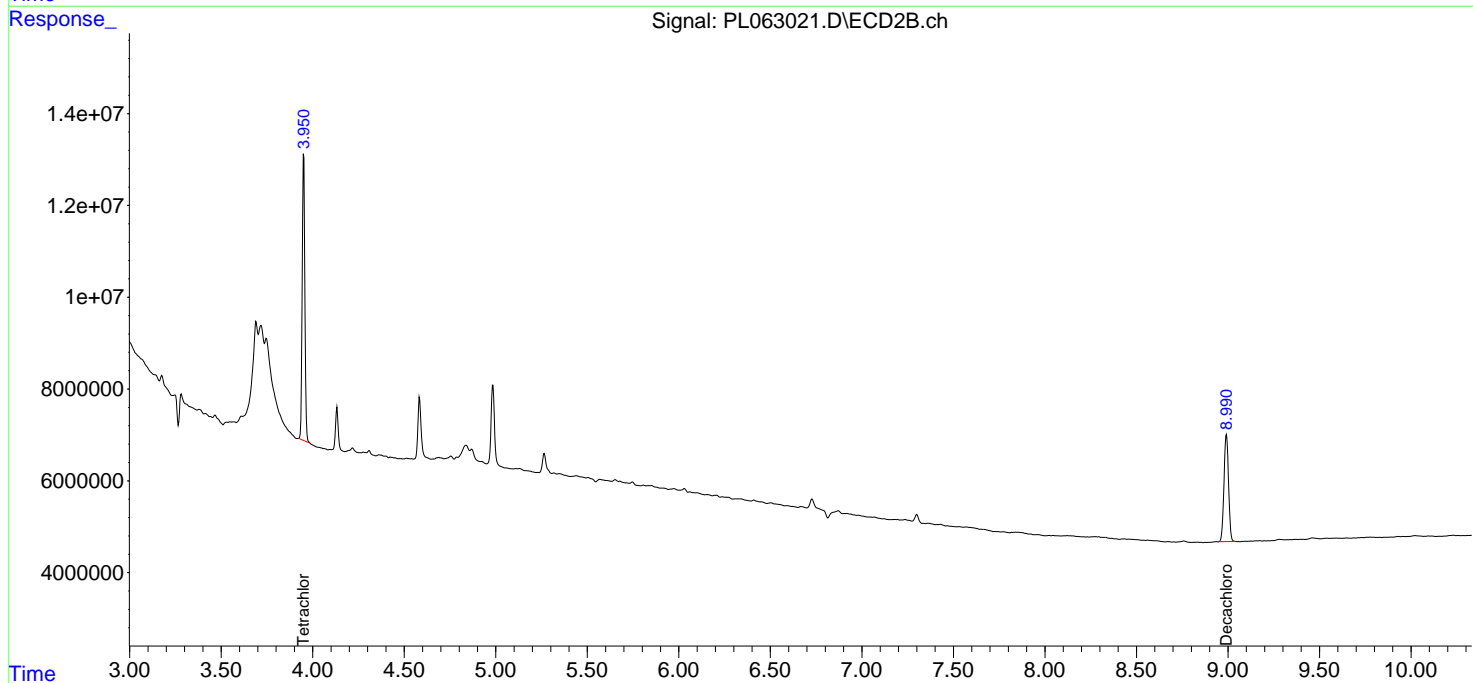
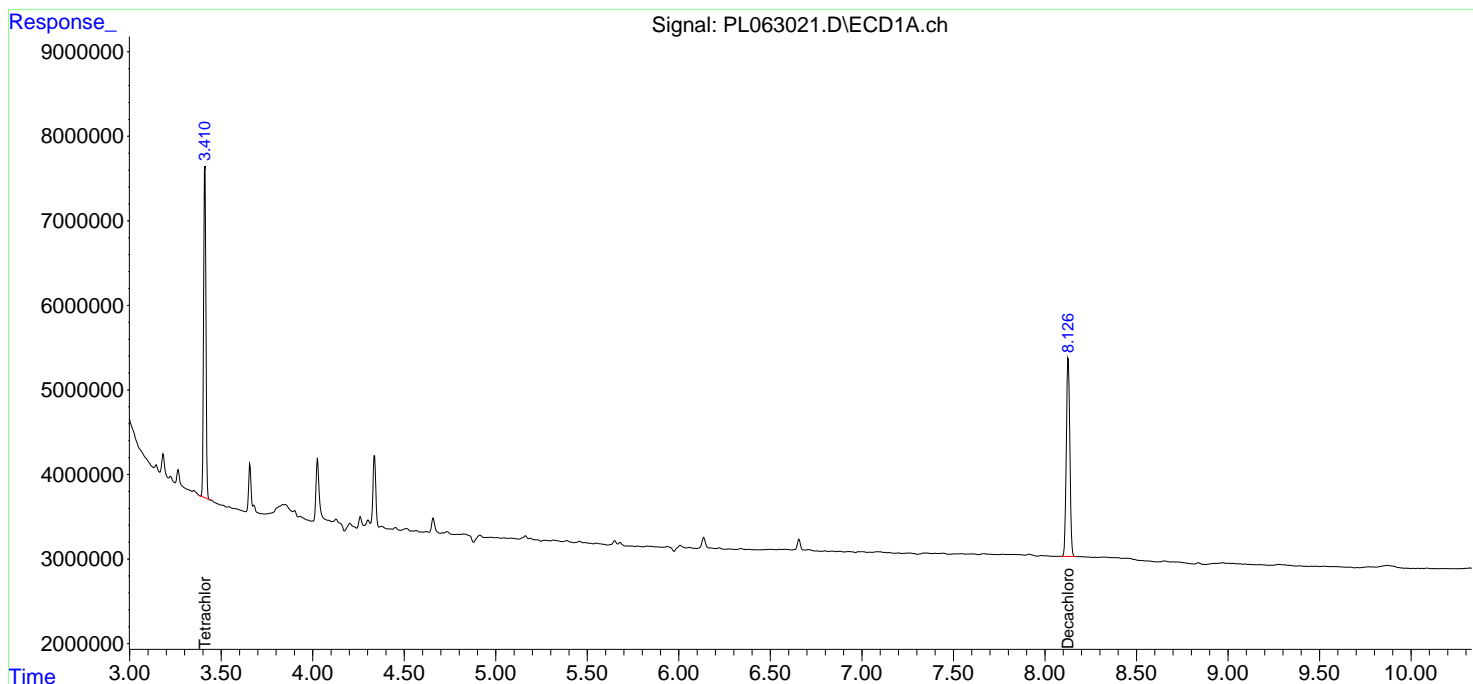
(f)=RT Delta > 1/2 Window (#)=Amounts differ by > 25% (m)=manual int.

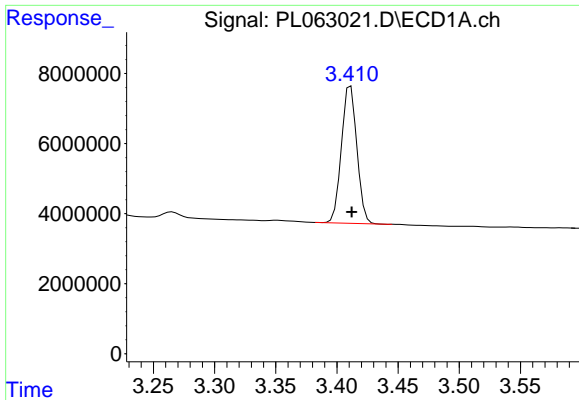
Data Path : Z:\pestpcbsrv\HPCHEM1\ECD\_L\Data\PL111320\  
 Data File : PL063021.D  
 Signal(s) : Signal #1: ECD1A.ch Signal #2: ECD2B.ch  
 Acq On : 13 Nov 2020 15:27  
 Operator : DD\AJ  
 Sample : L4719-04  
 Misc :  
 ALS Vial : 18 Sample Multiplier: 1

Instrument :  
 ECD\_L  
 ClientSampled :  
 TP-3-S

Integration File signal 1: autoint1.e  
 Integration File signal 2: autoint2.e  
 Quant Time: Nov 13 16:54:09 2020  
 Quant Method : Z:\pestpcbsrv\HPCHEM1\ECD\_L\methods\PL102120.M  
 Quant Title : GC Extractables  
 QLast Update : Thu Oct 22 04:25:31 2020  
 Response via : Initial Calibration  
 Integrator: ChemStation

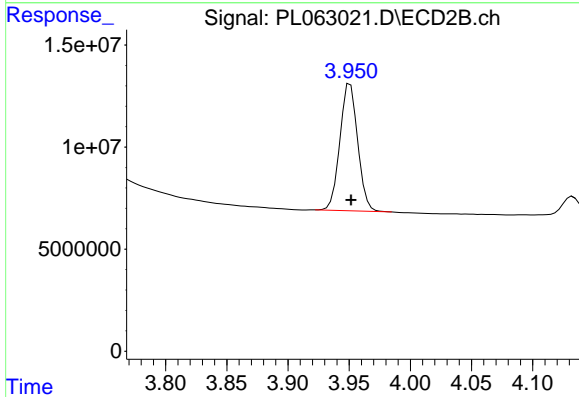
Volume Inj. : 1 µl  
 Signal #1 Phase : ZB-MR2 Signal #2 Phase: ZB-MR1  
 Signal #1 Info : 30M x 0.32mm x0.2 Signal #2 Info : 30M x 0.32mm x0.5µm



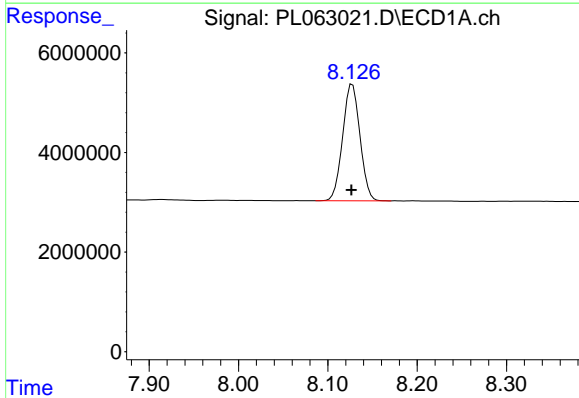


#1 Tetrachloro-m-xylene  
R.T.: 3.411 min  
Delta R.T.: 0.000 min  
Response: 34320868  
Conc: 19.95 ng/ml

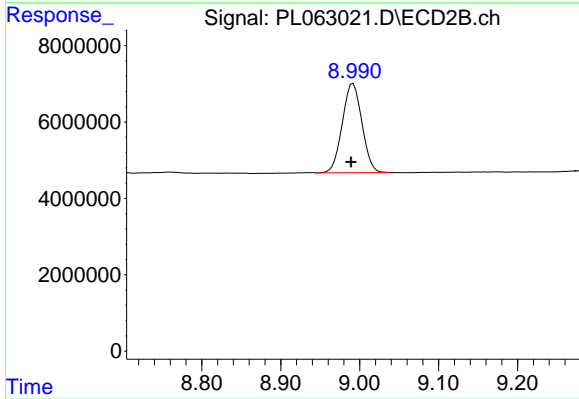
Instrument :  
ECD\_L  
ClientSampleId :  
TP-3-S



#1 Tetrachloro-m-xylene  
R.T.: 3.951 min  
Delta R.T.: 0.000 min  
Response: 63095657  
Conc: 21.47 ng/ml



#28 Decachlorobiphenyl  
R.T.: 8.128 min  
Delta R.T.: 0.001 min  
Response: 31507522  
Conc: 19.64 ng/ml



#28 Decachlorobiphenyl  
R.T.: 8.992 min  
Delta R.T.: 0.003 min  
Response: 40257490  
Conc: 19.23 ng/ml