

Data Path : Z:\pestpcbsrv\HPCHEM1\ECD\_L\Data\PL111422\  
 Data File : PL079100.D  
 Signal(s) : Signal #1: ECD1A.ch Signal #2: ECD2B.ch  
 Acq On : 14 Nov 2022 17:05  
 Operator : AR\AJ  
 Sample : N5607-13  
 Misc :  
 ALS Vial : 18 Sample Multiplier: 1

Instrument :  
 ECD\_L  
 ClientSampleId :  
 SB-40B

Integration File signal 1: autoint1.e  
 Integration File signal 2: autoint2.e  
 Quant Time: Nov 14 20:23:51 2022  
 Quant Method : Z:\pestpcbsrv\HPCHEM1\ECD\_L\methods\PL102122.M  
 Quant Title : GC Extractables  
 QLast Update : Fri Oct 21 07:08:41 2022  
 Response via : Initial Calibration  
 Integrator: ChemStation

Volume Inj. : 1 µl  
 Signal #1 Phase : ZB-MR2 Signal #2 Phase: ZB-MR1  
 Signal #1 Info : 30M x 0.32mm x0.2 Signal #2 Info : 30M x 0.32mm x0.5µm

| Compound                    | RT#1  | RT#2  | Resp#1   | Resp#2   | ng/ml  | ng/ml  |
|-----------------------------|-------|-------|----------|----------|--------|--------|
| -----                       |       |       |          |          |        |        |
| System Monitoring Compounds |       |       |          |          |        |        |
| 1) SA Tetrachlo...          | 3.321 | 2.568 | 33997987 | 40989406 | 17.828 | 16.054 |
| 28) SA Decachlor...         | 8.768 | 7.634 | 22873364 | 28828845 | 15.205 | 15.220 |

Target Compounds

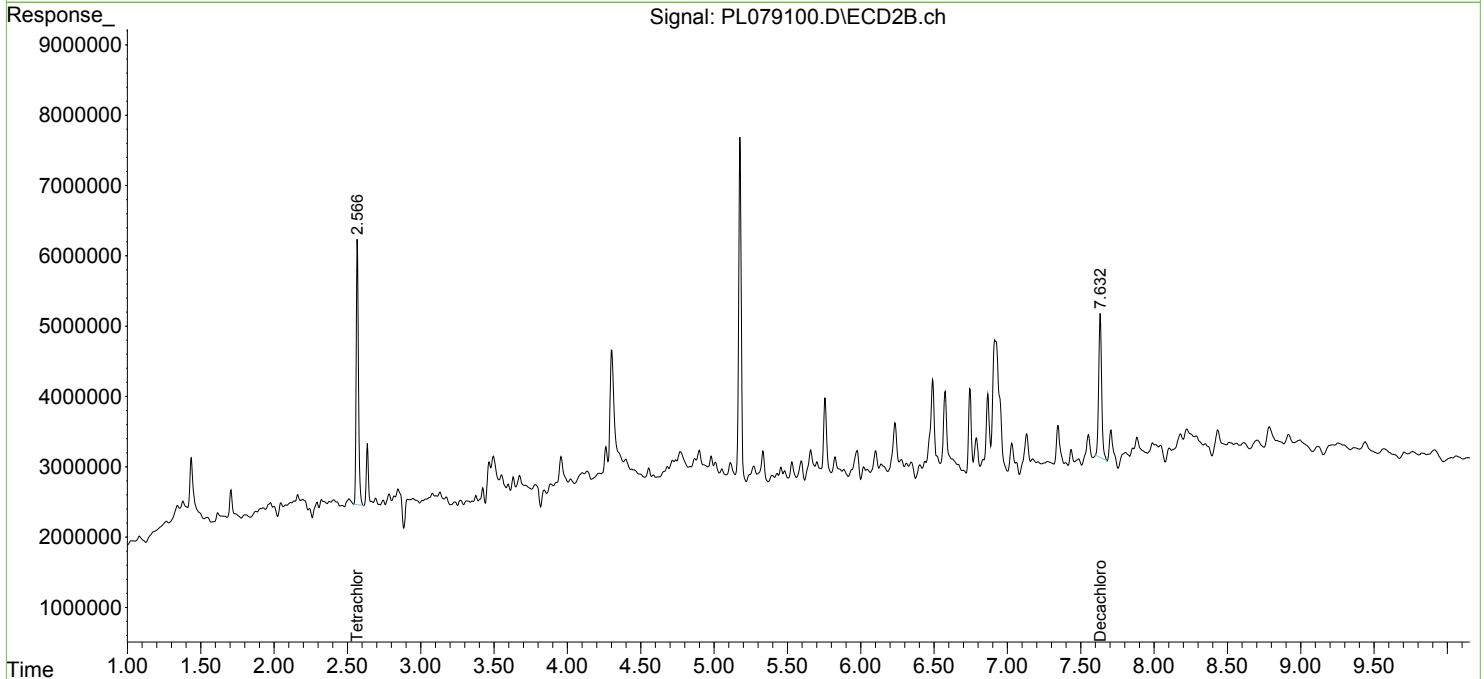
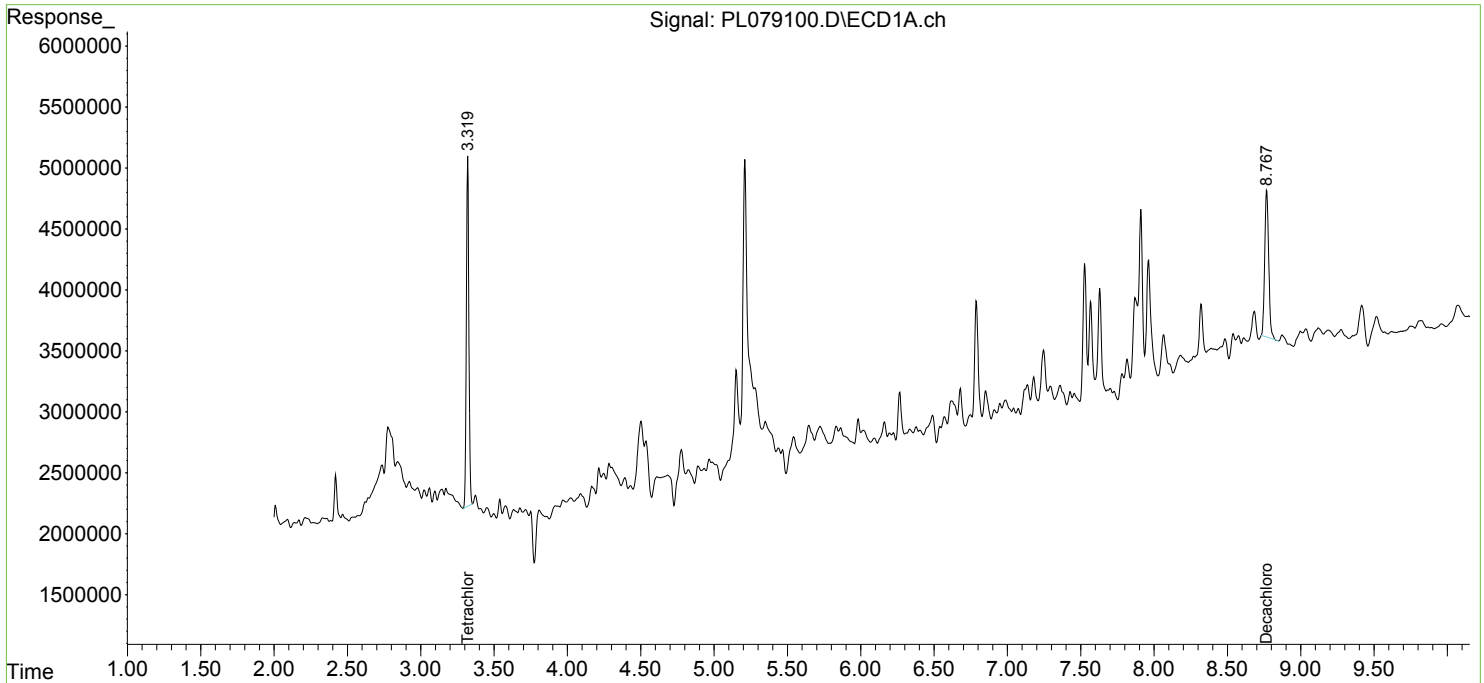
(f)=RT Delta > 1/2 Window (#)=Amounts differ by > 25% (m)=manual int.

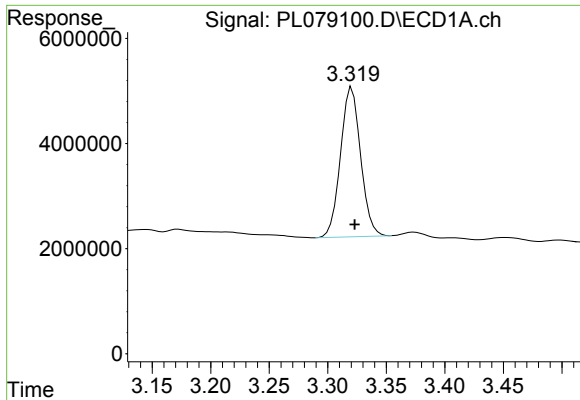
Data Path : Z:\pestpcbsrv\HPCHEM1\ECD\_L\Data\PL111422\  
 Data File : PL079100.D  
 Signal(s) : Signal #1: ECD1A.ch Signal #2: ECD2B.ch  
 Acq On : 14 Nov 2022 17:05  
 Operator : AR\AJ  
 Sample : N5607-13  
 Misc :  
 ALS Vial : 18 Sample Multiplier: 1

Instrument :  
 ECD\_L  
 ClientSampleId :  
 SB-40B

Integration File signal 1: autoint1.e  
 Integration File signal 2: autoint2.e  
 Quant Time: Nov 14 20:23:51 2022  
 Quant Method : Z:\pestpcbsrv\HPCHEM1\ECD\_L\methods\PL102122.M  
 Quant Title : GC Extractables  
 QLast Update : Fri Oct 21 07:08:41 2022  
 Response via : Initial Calibration  
 Integrator: ChemStation

Volume Inj. : 1 µl  
 Signal #1 Phase : ZB-MR2 Signal #2 Phase: ZB-MR1  
 Signal #1 Info : 30M x 0.32mm x0.2 Signal #2 Info : 30M x 0.32mm x0.5µm

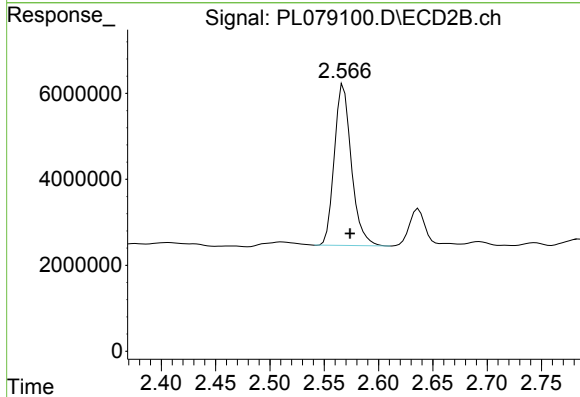




#1 Tetrachloro-m-xylene

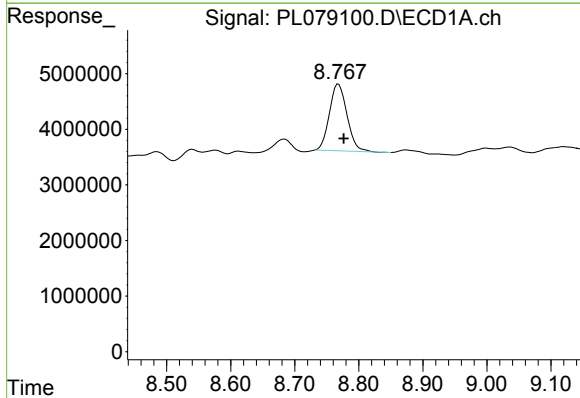
R.T.: 3.321 min  
 Delta R.T.: -0.002 min  
 Response: 33997987  
 Conc: 17.83 ng/ml

Instrument :  
 ECD\_L  
 ClientSampleId :  
 SB-40B



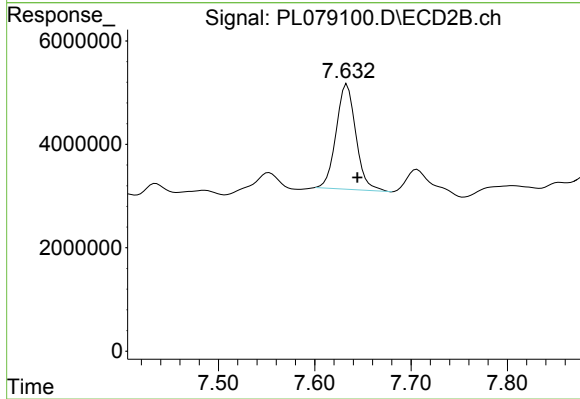
#1 Tetrachloro-m-xylene

R.T.: 2.568 min  
 Delta R.T.: -0.006 min  
 Response: 40989406  
 Conc: 16.05 ng/ml



#28 Decachlorobiphenyl

R.T.: 8.768 min  
 Delta R.T.: -0.008 min  
 Response: 22873364  
 Conc: 15.20 ng/ml



#28 Decachlorobiphenyl

R.T.: 7.634 min  
 Delta R.T.: -0.011 min  
 Response: 28828845  
 Conc: 15.22 ng/ml