

Data Path : Z:\pestpcbsrv\HPCHEM1\ECD_L\Data\PL111423\
 Data File : PL086640.D
 Signal(s) : Signal #1: ECD1A.ch Signal #2: ECD2B.ch
 Acq On : 14 Nov 2023 09:32
 Operator : AR\AJ
 Sample : 05385-01
 Misc :
 ALS Vial : 6 Sample Multiplier: 1

Instrument :
 ECD_L
ClientSampleId :
 HR-02-11102023

Manual Integrations
APPROVED
 Reviewed By :Abdul Mirza 11/15/2023
 Supervised By :Ankita Jodhani 11/15/2023

Integration File signal 1: autoint1.e
 Integration File signal 2: autoint2.e
 Quant Time: Nov 14 19:41:54 2023
 Quant Method : Z:\pestpcbsrv\HPCHEM1\ECD_L\methods\PL110823.M
 Quant Title : GC Extractables
 QLast Update : Wed Nov 08 13:04:14 2023
 Response via : Initial Calibration
 Integrator: ChemStation

Volume Inj. : 1 µl
 Signal #1 Phase : ZB-MR2 Signal #2 Phase: ZB-MR1
 Signal #1 Info : 30M x 0.32mm x0.2 Signal #2 Info : 30M x 0.32mm x0.5µm

Compound	RT#1	RT#2	Resp#1	Resp#2	ng/ml	ng/ml

System Monitoring Compounds						
1) SA Tetrachlo...	3.351	2.616	25264307	6945440	7.781	7.054
28) SA Decachlor...	8.852	7.766	21480042	8606959	7.338	7.127
Target Compounds						
11) B alpha-Chl...	5.833	4.872	18410125	3294362	4.535m	2.634 #

(f)=RT Delta > 1/2 Window (#)=Amounts differ by > 25% (m)=manual int.

Data Path : Z:\pestpcbsrv\HPCHEM1\ECD_L\Data\PL111423\
 Data File : PL086640.D
 Signal(s) : Signal #1: ECD1A.ch Signal #2: ECD2B.ch
 Acq On : 14 Nov 2023 09:32
 Operator : AR\AJ
 Sample : 05385-01
 Misc :
 ALS Vial : 6 Sample Multiplier: 1

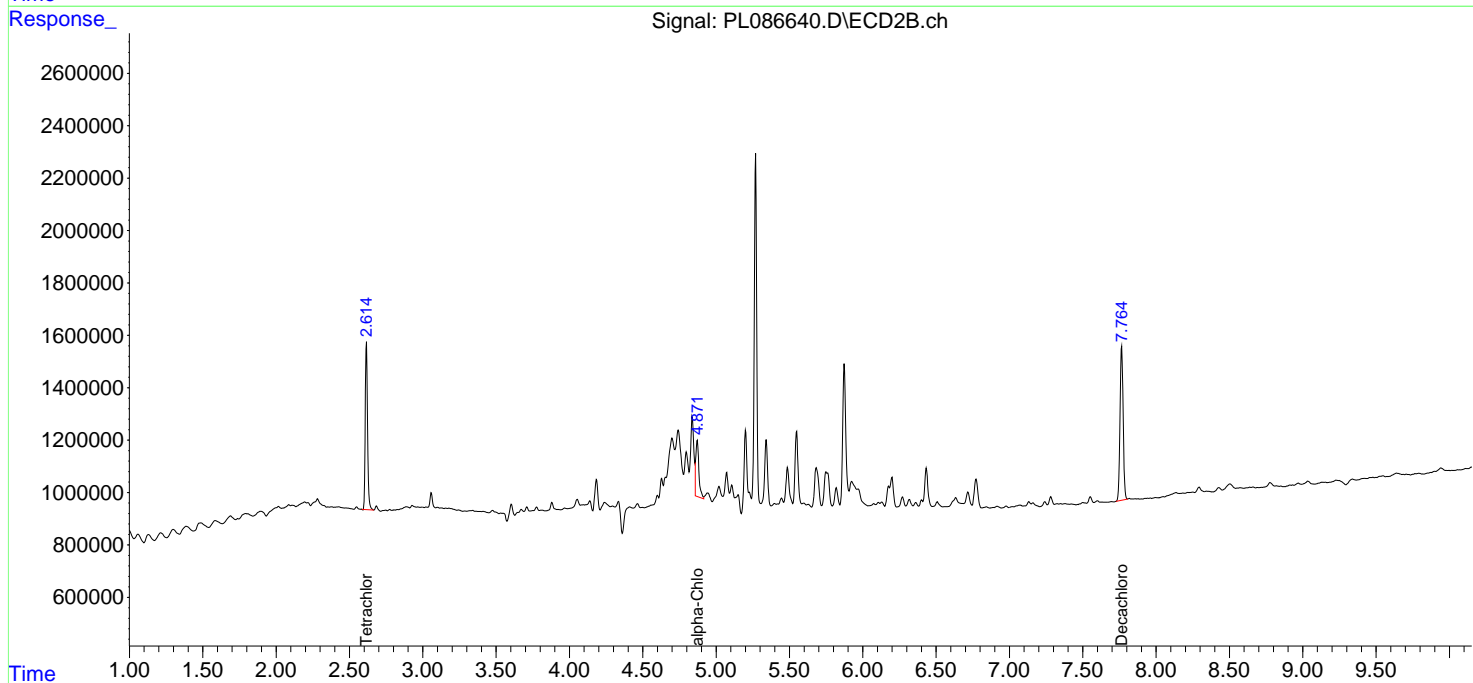
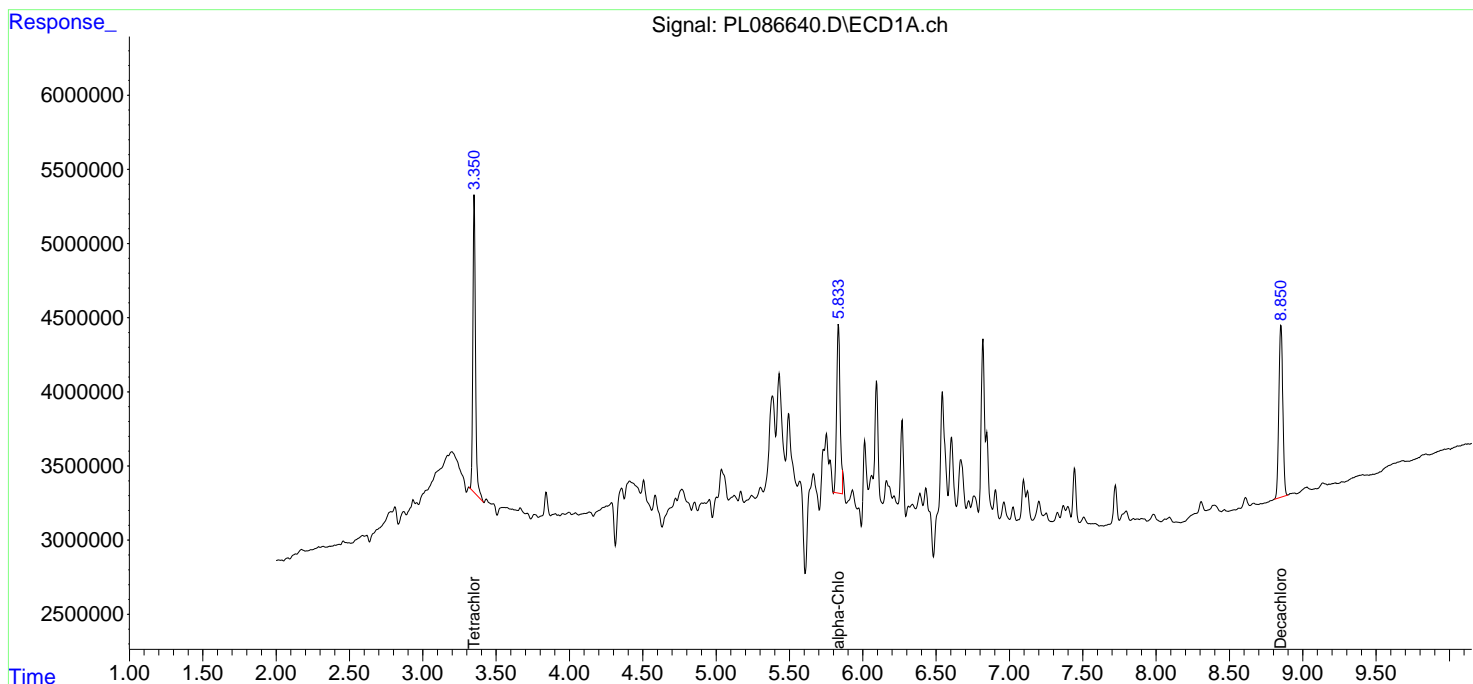
Instrument :
 ECD_L
 ClientSampleId :
 HR-02-11102023

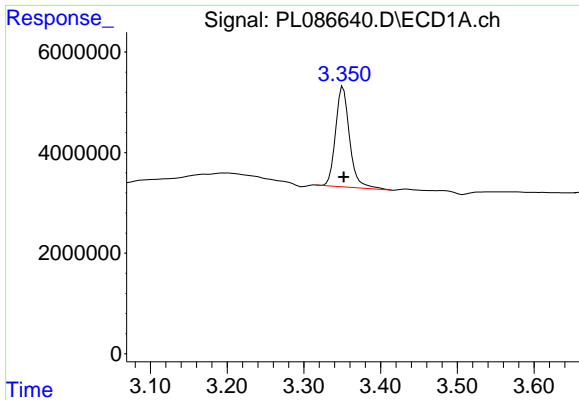
Manual Integrations
APPROVED

Reviewed By :Abdul Mirza 11/15/2023
 Supervised By :Ankita Jodhani 11/15/2023

Integration File signal 1: autoint1.e
 Integration File signal 2: autoint2.e
 Quant Time: Nov 14 19:41:54 2023
 Quant Method : Z:\pestpcbsrv\HPCHEM1\ECD_L\methods\PL110823.M
 Quant Title : GC Extractables
 QLast Update : Wed Nov 08 13:04:14 2023
 Response via : Initial Calibration
 Integrator: ChemStation

Volume Inj. : 1 µl
 Signal #1 Phase : ZB-MR2 Signal #2 Phase: ZB-MR1
 Signal #1 Info : 30M x 0.32mm x0.2 Signal #2 Info : 30M x 0.32mm x0.5µm





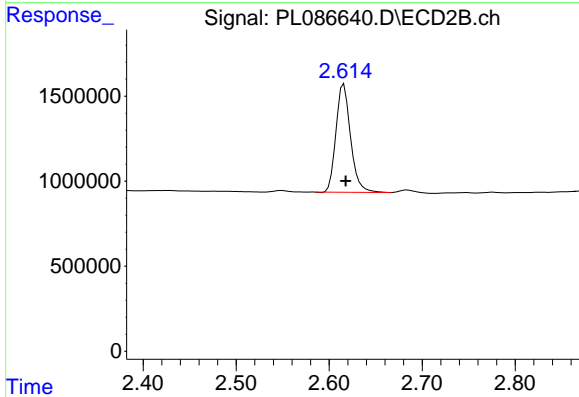
#1 Tetrachloro-m-xylene

R.T.: 3.351 min
 Delta R.T.: 0.000 min
 Response: 25264307
 Conc: 7.78 ng/ml

Instrument : ECD_L
 Client Sample Id : HR-02-11102023

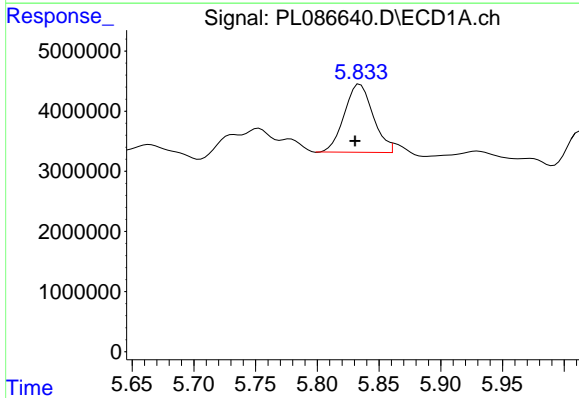
Manual Integrations
 APPROVED

Reviewed By :Abdul Mirza 11/15/2023
 Supervised By :Ankita Jodhani 11/15/2023



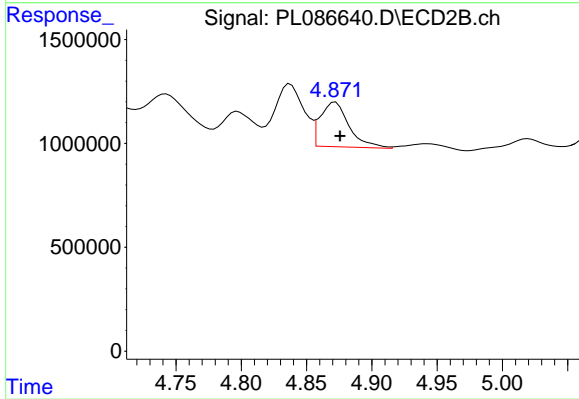
#1 Tetrachloro-m-xylene

R.T.: 2.616 min
 Delta R.T.: -0.002 min
 Response: 6945440
 Conc: 7.05 ng/ml



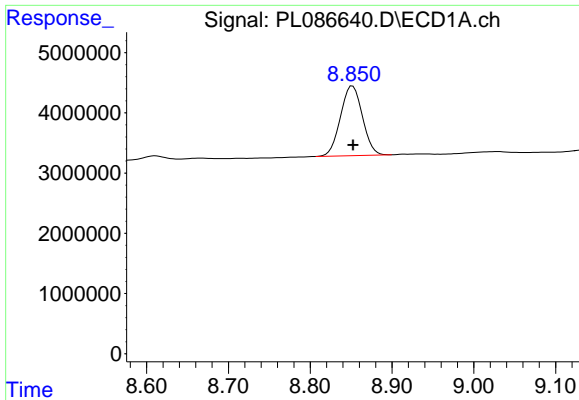
#11 alpha-Chlordane

R.T.: 5.833 min
 Delta R.T.: 0.003 min
 Response: 18410125
 Conc: 4.53 ng/ml m



#11 alpha-Chlordane

R.T.: 4.872 min
 Delta R.T.: -0.003 min
 Response: 3294362
 Conc: 2.63 ng/ml



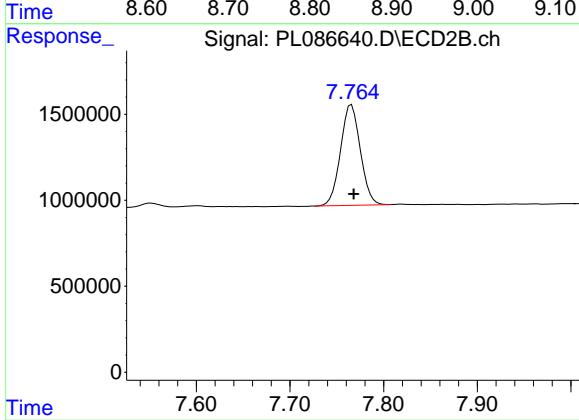
#28 Decachlorobiphenyl

R.T.: 8.852 min
 Delta R.T.: 0.000 min
 Response: 21480042
 Conc: 7.34 ng/ml

Instrument :
 ECD_L
 ClientSampleId :
 HR-02-11102023

Manual Integrations
 APPROVED

Reviewed By :Abdul Mirza 11/15/2023
 Supervised By :Ankita Jodhani 11/15/2023



#28 Decachlorobiphenyl

R.T.: 7.766 min
 Delta R.T.: -0.002 min
 Response: 8606959
 Conc: 7.13 ng/ml