

Data Path : Z:\pestpcbsrv\HPCHEM1\ECD\_L\Data\PL111519\  
 Data File : PL054279.D  
 Signal(s) : Signal #1: ECD1A.ch Signal #2: ECD2B.ch  
 Acq On : 15 Nov 2019 12:54  
 Operator : SG\AJ  
 Sample : K5832-10MS  
 Misc :  
 ALS Vial : 20 Sample Multiplier: 1

Instrument :  
 ECD\_L  
 ClientSampleId :  
 8-(8-10)MS

Integration File signal 1: autoint1.e  
 Integration File signal 2: autoint2.e  
 Quant Time: Nov 16 00:21:35 2019  
 Quant Method : Z:\pestpcbsrv\HPCHEM1\ECD\_L\methods\PL101919.M  
 Quant Title : GC Extractables  
 QLast Update : Fri Oct 18 13:56:08 2019  
 Response via : Initial Calibration  
 Integrator: ChemStation

Volume Inj. : 1 µl  
 Signal #1 Phase : ZB-MR2 Signal #2 Phase: ZB-MR1  
 Signal #1 Info : 30M x 0.32mm x0.2 Signal #2 Info : 30M x 0.32mm x0.5µm

Compound	RT#1	RT#2	Resp#1	Resp#2	ng/ml	ng/ml
-----						
System Monitoring Compounds						
1) SA Tetrachlo...	3.539	4.043	205.7E6	48946652	18.974	19.560
28) SA Decachlor...	8.322	9.121	182.6E6	48237401	18.615	17.130
Target Compounds						
2) A alpha-BHC	3.982	4.434	960.4E6	185.2E6	55.080	53.580
3) MA gamma-BHC...	4.269	4.720	867.0E6	172.2E6	55.671	53.463
4) MA Heptachlor	4.575	5.229	871.4E6	159.1E6	55.213	49.377
5) MB Aldrin	4.826	5.534	816.2E6	150.7E6	57.092	50.551
6) B beta-BHC	4.519	4.890	346.7E6	77574718	52.617	50.222
7) B delta-BHC	4.727	5.108	767.8E6	134.3E6	50.445	44.454
8) B Heptachlo...	5.272	5.921	746.4E6	136.3E6	55.295	46.737
9) A Endosulfan I	5.613	6.278	657.8E6	137.8E6	53.517	50.843
10) B gamma-Chl...	5.500	6.155	760.0E6	143.3E6	55.703	49.114
11) B alpha-Chl...	5.558	6.228	781.9E6	145.0E6	58.774	49.681
12) B 4,4'-DDE	5.722	6.383	690.4E6	139.6E6	58.106	49.568
13) MA Dieldrin	5.858	6.535	707.6E6	139.6E6	54.289	48.907
14) MA Endrin	6.117	6.753	614.7E6	116.3E6	53.035	47.932
15) B Endosulfa...	6.390	6.962	574.6E6	123.8E6	51.397	48.452
16) A 4,4'-DDD	6.239	6.874	498.7E6	107.4E6	56.032	51.560
17) MA 4,4'-DDT	6.482	7.173	531.3E6	114.3E6	53.629	49.414
18) B Endrin al...	6.559	7.086	439.2E6	98539383	47.901	44.856
19) B Endosulfa...	6.771	7.309	487.5E6	110.2E6	47.930	44.912
20) A Methoxychlor	7.027	7.631	248.0E6	61142964	50.309	47.073
21) B Endrin ke...	7.265	7.780	550.6E6	126.5E6	51.143	49.078
22) Mirex	7.458	8.235	462.2E6	106.7E6	54.037	52.737
24) Chlordane-2	0.000	5.534f	0	150.7E6	N.D.	1534.492 #
25) Chlordane-3	5.500	6.155	760.0E6	143.3E6	659.322	392.366 #
26) Chlordane-4	5.558	6.228	781.9E6	145.0E6	834.068	323.052 #
27) Chlordane-5	6.390f	0.000	574.6E6	0	1572.009	N.D. #

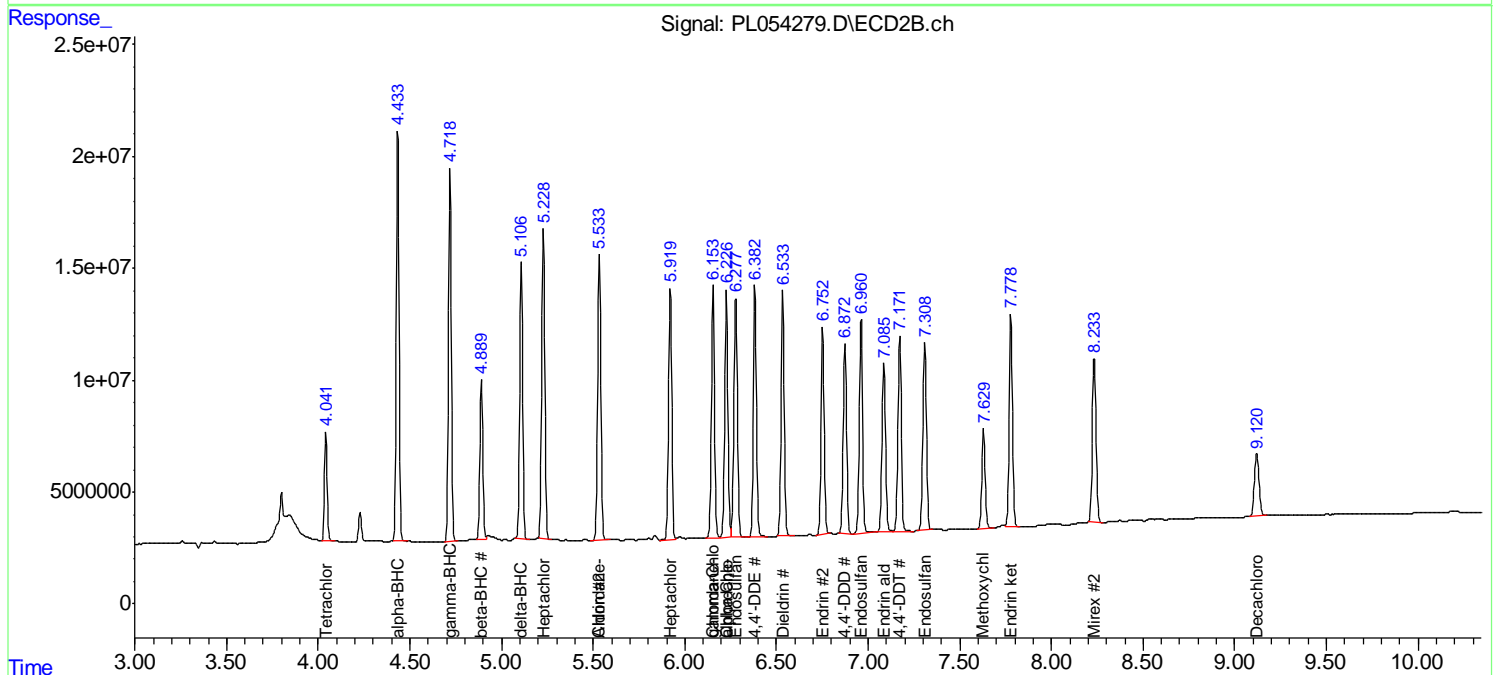
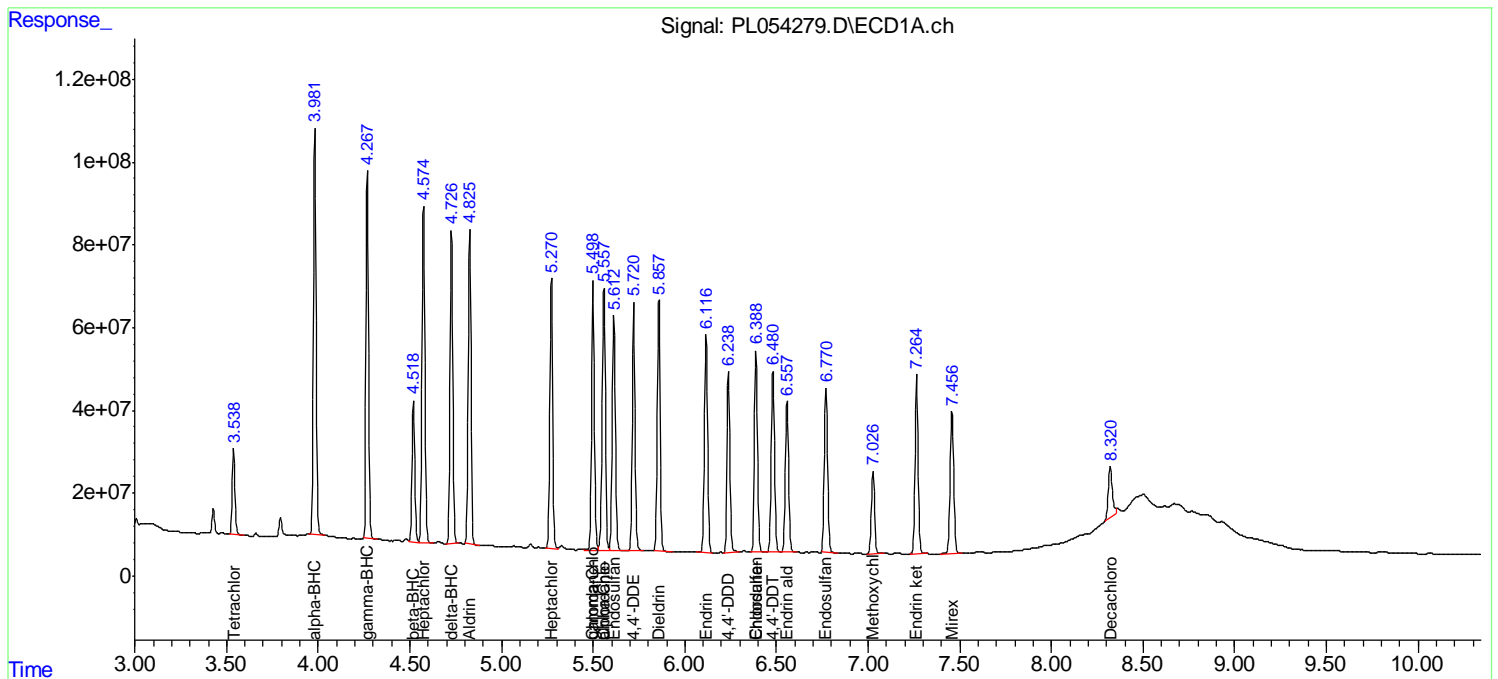
(f)=RT Delta > 1/2 Window (#)=Amounts differ by > 25% (m)=manual int.

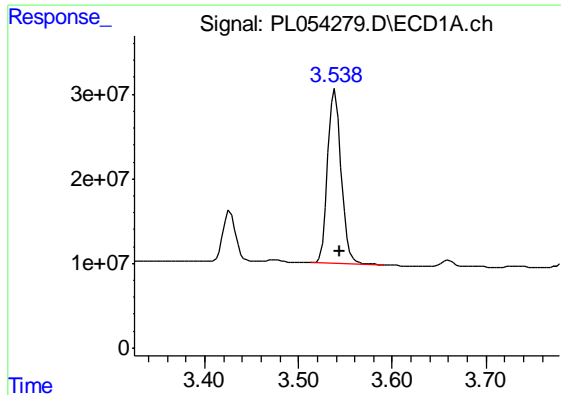
Data Path : Z:\pestpcbsrv\HPCHEM1\ECD\_L\Data\PL111519\  
 Data File : PL054279.D  
 Signal(s) : Signal #1: ECD1A.ch Signal #2: ECD2B.ch  
 Acq On : 15 Nov 2019 12:54  
 Operator : SG\AJ  
 Sample : K5832-10MS  
 Misc :  
 ALS Vial : 20 Sample Multiplier: 1

Instrument :  
 ECD\_L  
 Client Sampled :  
 8-(8-10)MS

Integration File signal 1: autoint1.e  
 Integration File signal 2: autoint2.e  
 Quant Time: Nov 16 00:21:35 2019  
 Quant Method : Z:\pestpcbsrv\HPCHEM1\ECD\_L\methods\PL101919.M  
 Quant Title : GC Extractables  
 QLast Update : Fri Oct 18 13:56:08 2019  
 Response via : Initial Calibration  
 Integrator: ChemStation

Volume Inj. : 1 µl  
 Signal #1 Phase : ZB-MR2 Signal #2 Phase: ZB-MR1  
 Signal #1 Info : 30M x 0.32mm x0.2 Signal #2 Info : 30M x 0.32mm x0.5µm

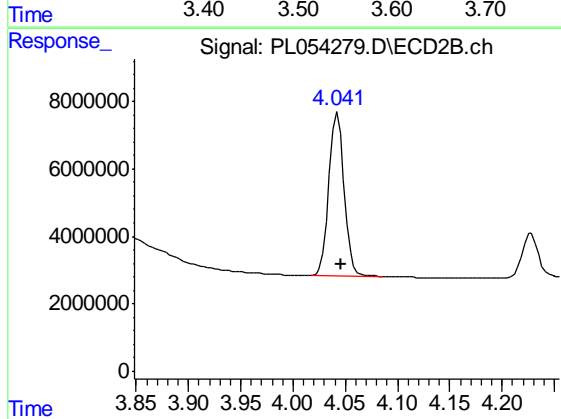




#1 Tetrachloro-m-xylene

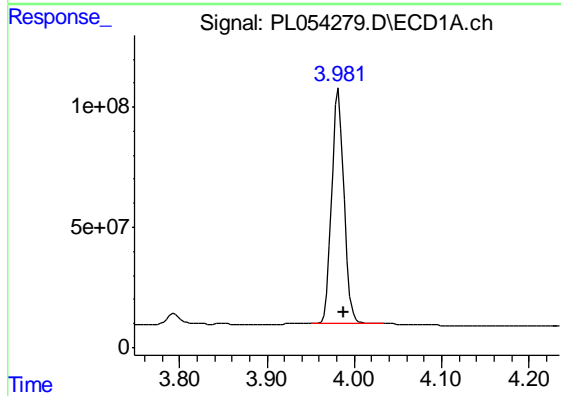
R.T.: 3.539 min  
 Delta R.T.: -0.005 min  
 Response: 205663291  
 Conc: 18.97 ng/ml

Instrument :  
 ECD\_L  
 ClientSampleId :  
 8-(8-10)MS



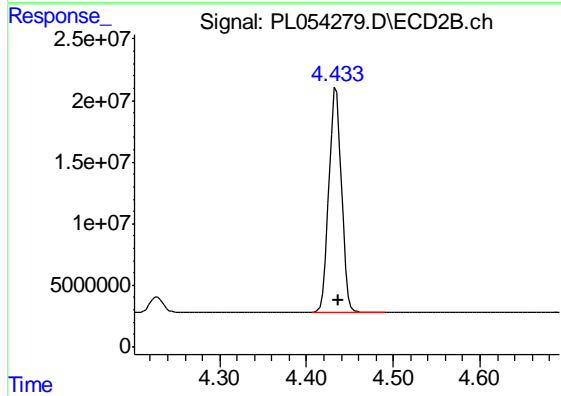
#1 Tetrachloro-m-xylene

R.T.: 4.043 min  
 Delta R.T.: -0.003 min  
 Response: 48946652  
 Conc: 19.56 ng/ml



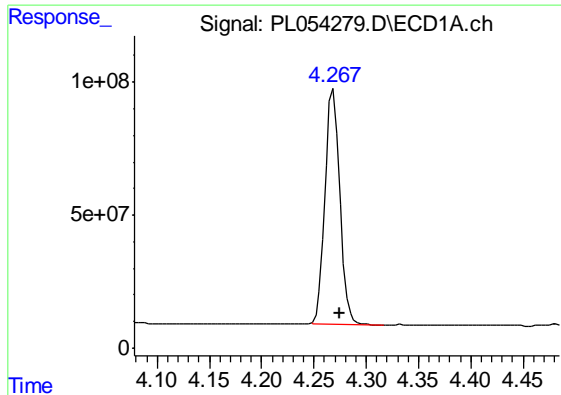
#2 alpha-BHC

R.T.: 3.982 min  
 Delta R.T.: -0.006 min  
 Response: 960396471  
 Conc: 55.08 ng/ml



#2 alpha-BHC

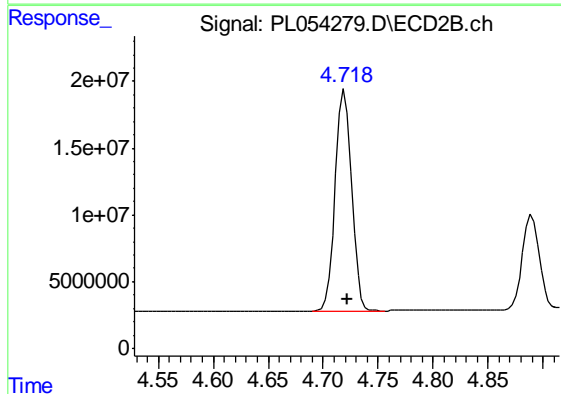
R.T.: 4.434 min  
 Delta R.T.: -0.002 min  
 Response: 185231850  
 Conc: 53.58 ng/ml



#3 gamma-BHC (Lindane)

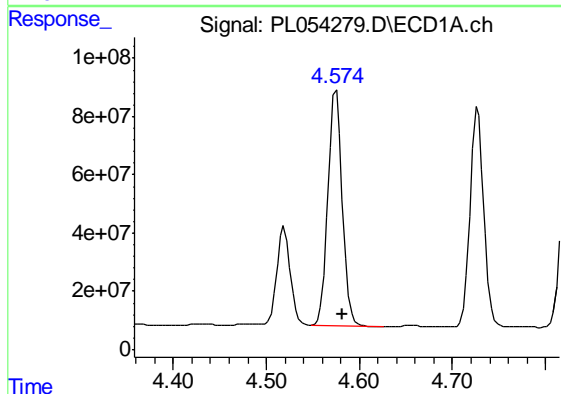
R.T.: 4.269 min  
 Delta R.T.: -0.006 min  
 Response: 866996373  
 Conc: 55.67 ng/ml

Instrument :  
 ECD\_L  
 ClientSampleId :  
 8-(8-10)MS



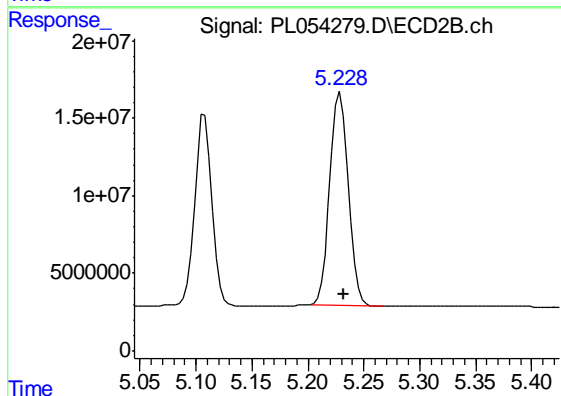
#3 gamma-BHC (Lindane)

R.T.: 4.720 min  
 Delta R.T.: -0.003 min  
 Response: 172170950  
 Conc: 53.46 ng/ml



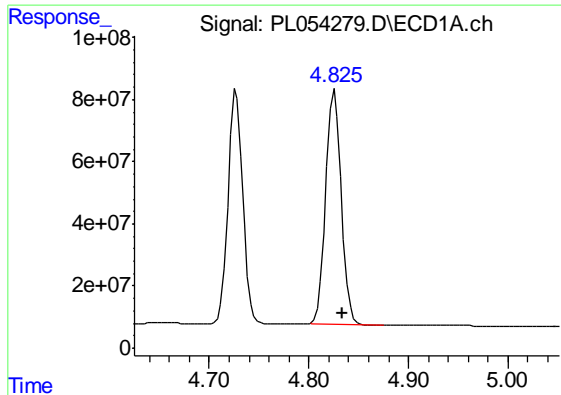
#4 Heptachlor

R.T.: 4.575 min  
 Delta R.T.: -0.007 min  
 Response: 871427441  
 Conc: 55.21 ng/ml



#4 Heptachlor

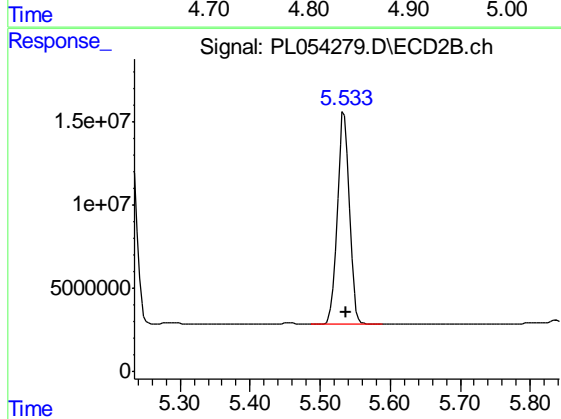
R.T.: 5.229 min  
 Delta R.T.: -0.003 min  
 Response: 159100080  
 Conc: 49.38 ng/ml



#5 Aldrin

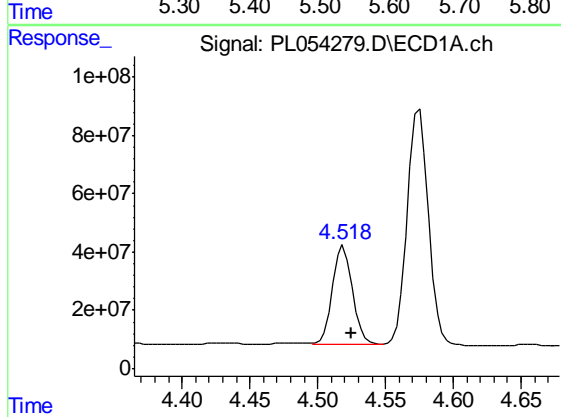
R.T.: 4.826 min  
Delta R.T.: -0.008 min  
Response: 816178451  
Conc: 57.09 ng/ml

Instrument :  
ECD\_L  
ClientSampleId :  
8-(8-10)MS



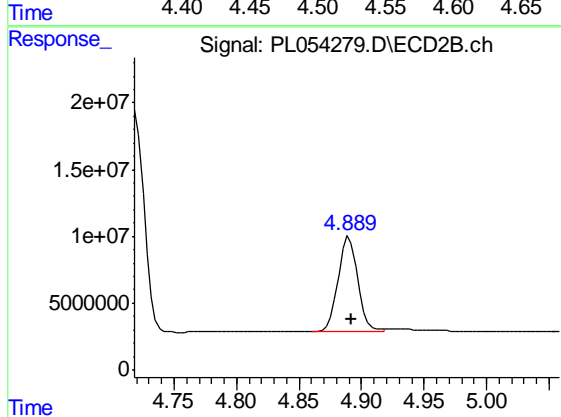
#5 Aldrin

R.T.: 5.534 min  
Delta R.T.: -0.003 min  
Response: 150720005  
Conc: 50.55 ng/ml



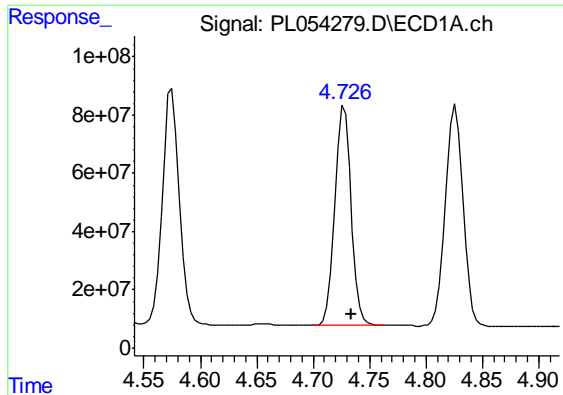
#6 beta-BHC

R.T.: 4.519 min  
Delta R.T.: -0.005 min  
Response: 346738390  
Conc: 52.62 ng/ml



#6 beta-BHC

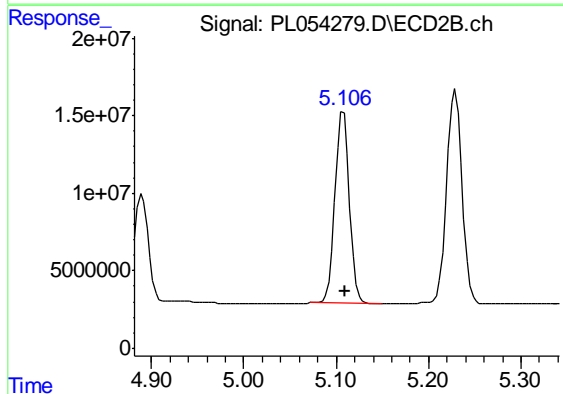
R.T.: 4.890 min  
Delta R.T.: -0.001 min  
Response: 77574718  
Conc: 50.22 ng/ml



#7 delta-BHC

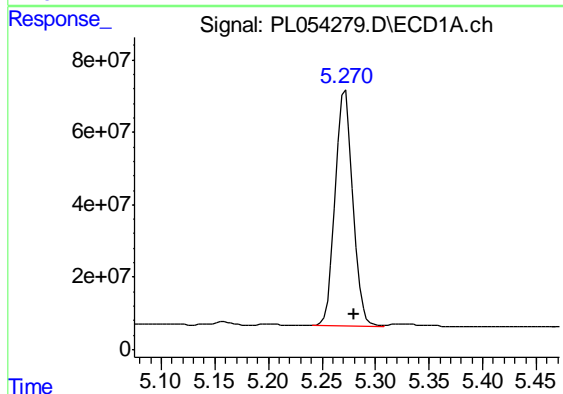
R.T.: 4.727 min  
 Delta R.T.: -0.006 min  
 Response: 767834454  
 Conc: 50.45 ng/ml

Instrument :  
 ECD\_L  
 ClientSampleId :  
 8-(8-10)MS



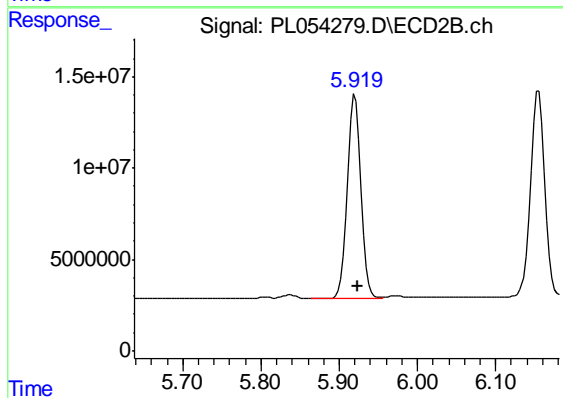
#7 delta-BHC

R.T.: 5.108 min  
 Delta R.T.: -0.001 min  
 Response: 134278174  
 Conc: 44.45 ng/ml



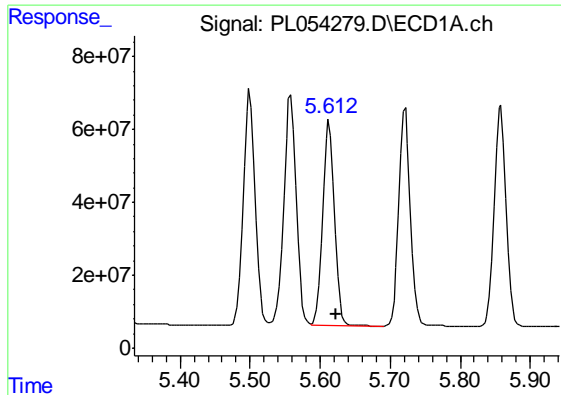
#8 Heptachlor epoxide

R.T.: 5.272 min  
 Delta R.T.: -0.008 min  
 Response: 746440858  
 Conc: 55.30 ng/ml



#8 Heptachlor epoxide

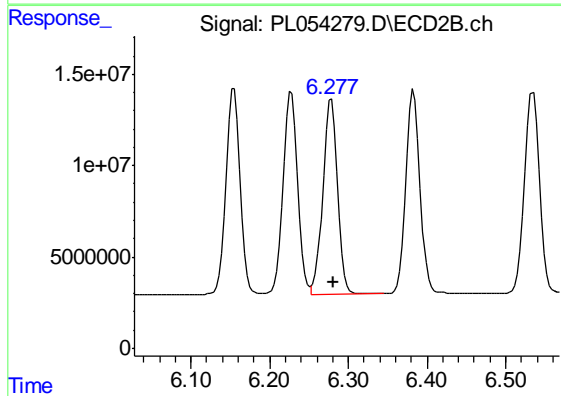
R.T.: 5.921 min  
 Delta R.T.: -0.004 min  
 Response: 136303723  
 Conc: 46.74 ng/ml



#9 Endosulfan I

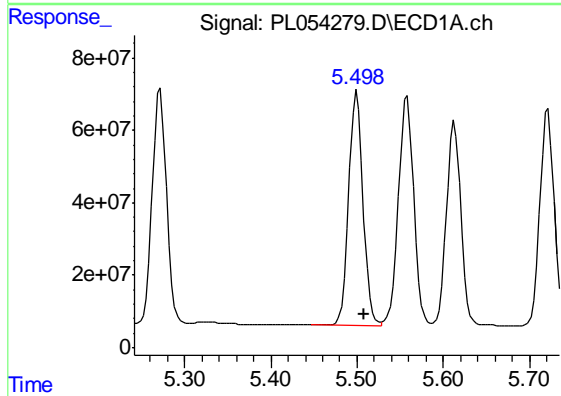
R.T.: 5.613 min  
 Delta R.T.: -0.010 min  
 Response: 657840813  
 Conc: 53.52 ng/ml

Instrument :  
 ECD\_L  
 ClientSampleId :  
 8-(8-10)MS



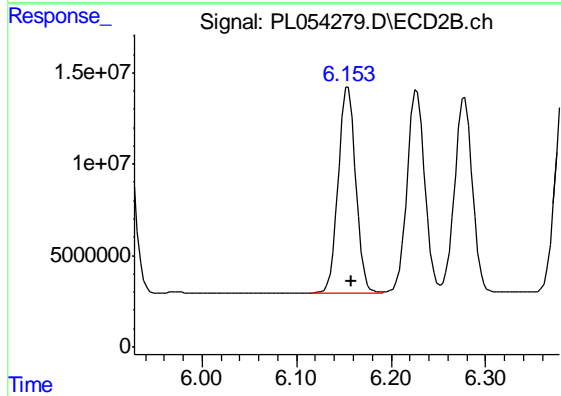
#9 Endosulfan I

R.T.: 6.278 min  
 Delta R.T.: -0.003 min  
 Response: 137847556  
 Conc: 50.84 ng/ml



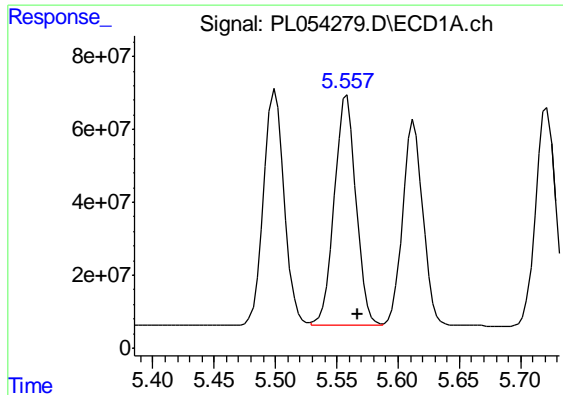
#10 gamma-Chlordane

R.T.: 5.500 min  
 Delta R.T.: -0.009 min  
 Response: 759992039  
 Conc: 55.70 ng/ml



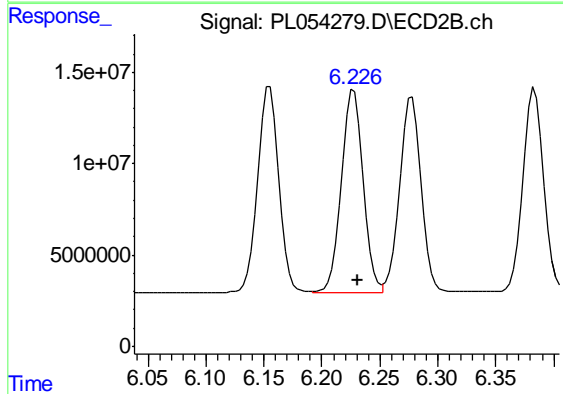
#10 gamma-Chlordane

R.T.: 6.155 min  
 Delta R.T.: -0.003 min  
 Response: 143304096  
 Conc: 49.11 ng/ml

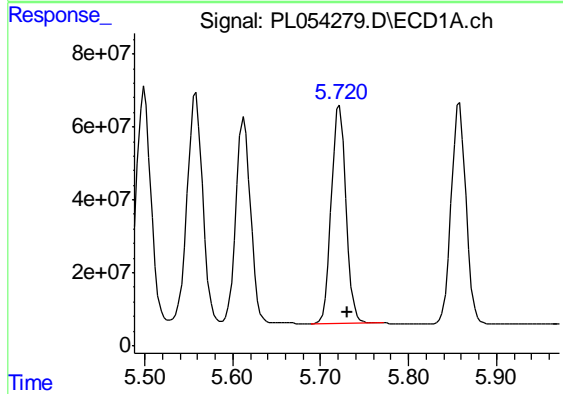


#11 alpha-Chlordane  
R.T.: 5.558 min  
Delta R.T.: -0.009 min  
Response: 781898987  
Conc: 58.77 ng/ml

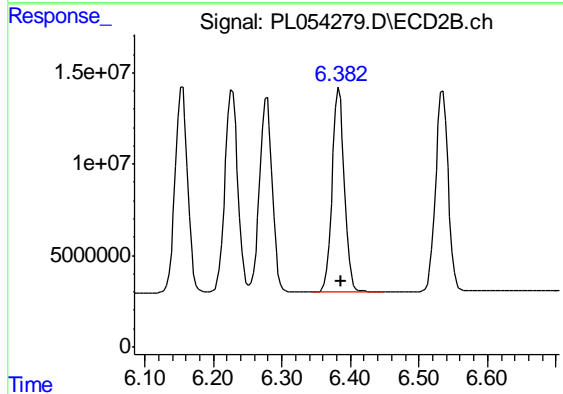
Instrument :  
ECD\_L  
ClientSampleId :  
8-(8-10)MS



#11 alpha-Chlordane  
R.T.: 6.228 min  
Delta R.T.: -0.003 min  
Response: 145030000  
Conc: 49.68 ng/ml

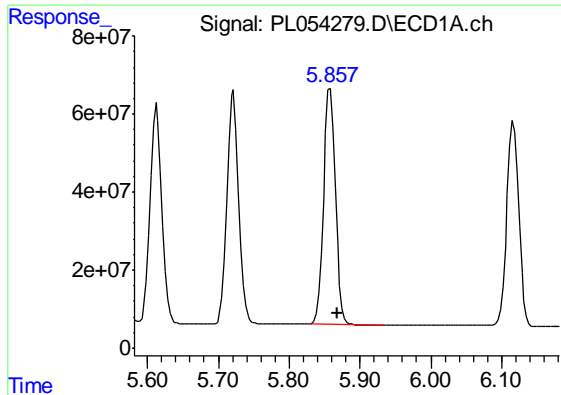


#12 4,4'-DDE  
R.T.: 5.722 min  
Delta R.T.: -0.009 min  
Response: 690432180  
Conc: 58.11 ng/ml



#12 4,4'-DDE  
R.T.: 6.383 min  
Delta R.T.: -0.003 min  
Response: 139599593  
Conc: 49.57 ng/ml

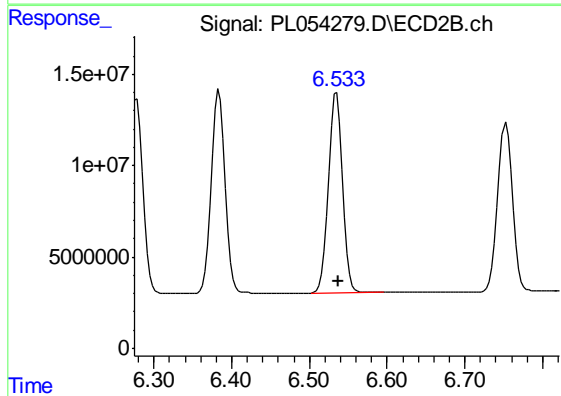




#13 Dieldrin

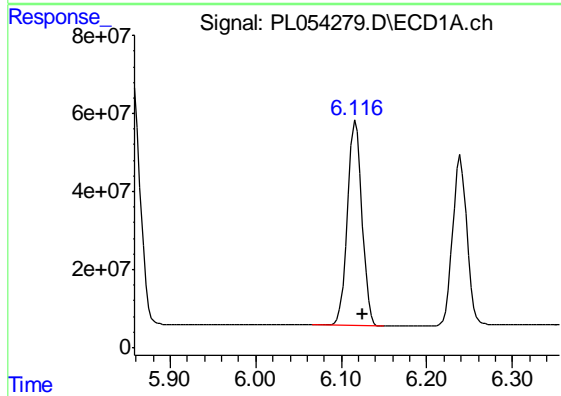
R.T.: 5.858 min  
 Delta R.T.: -0.009 min  
 Response: 707581660  
 Conc: 54.29 ng/ml

Instrument :  
 ECD\_L  
 ClientSampleId :  
 8-(8-10)MS



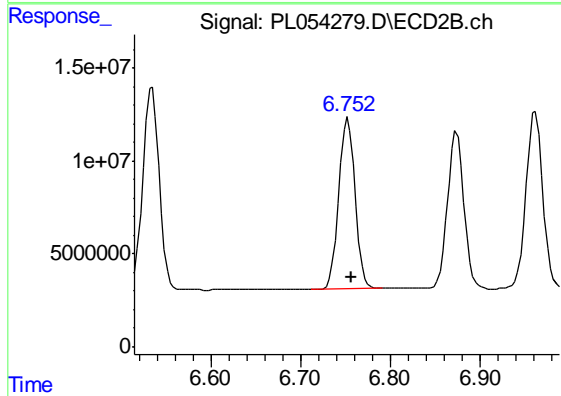
#13 Dieldrin

R.T.: 6.535 min  
 Delta R.T.: -0.003 min  
 Response: 139563212  
 Conc: 48.91 ng/ml



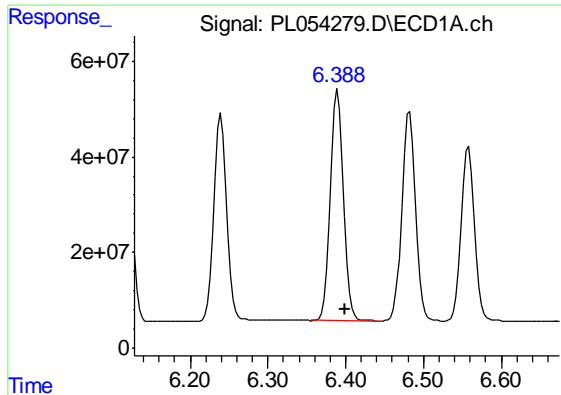
#14 Endrin

R.T.: 6.117 min  
 Delta R.T.: -0.009 min  
 Response: 614743162  
 Conc: 53.04 ng/ml



#14 Endrin

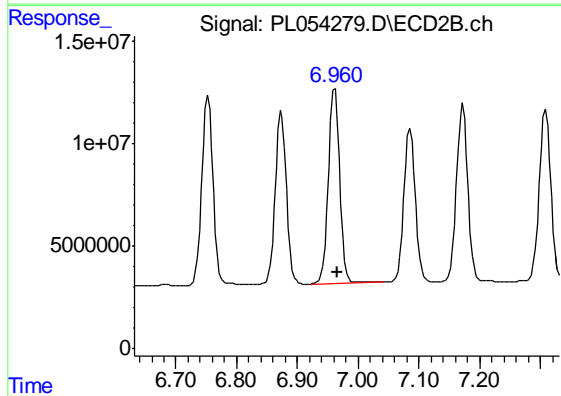
R.T.: 6.753 min  
 Delta R.T.: -0.003 min  
 Response: 116339964  
 Conc: 47.93 ng/ml



#15 Endosulfan II

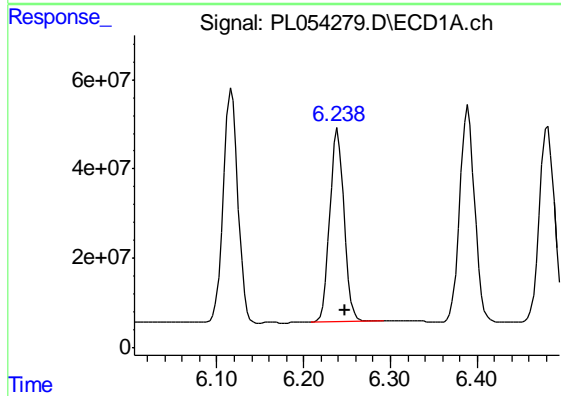
R.T.: 6.390 min  
 Delta R.T.: -0.009 min  
 Response: 574639070  
 Conc: 51.40 ng/ml

Instrument :  
 ECD\_L  
 ClientSampleId :  
 8-(8-10)MS



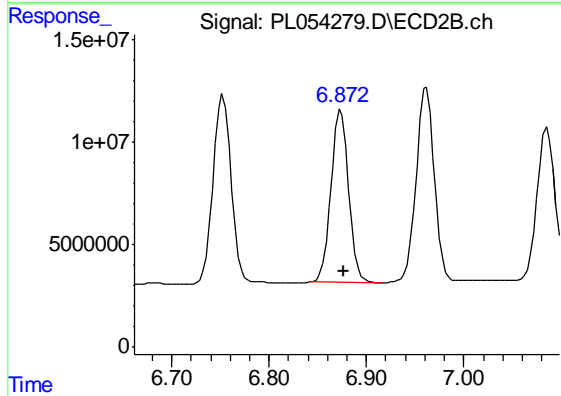
#15 Endosulfan II

R.T.: 6.962 min  
 Delta R.T.: -0.003 min  
 Response: 123769864  
 Conc: 48.45 ng/ml



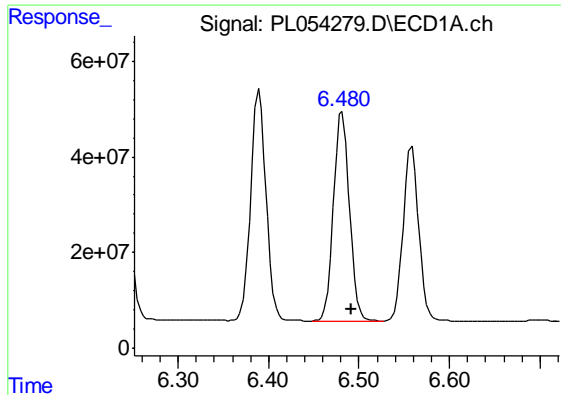
#16 4,4'-DDD

R.T.: 6.239 min  
 Delta R.T.: -0.009 min  
 Response: 498682338  
 Conc: 56.03 ng/ml



#16 4,4'-DDD

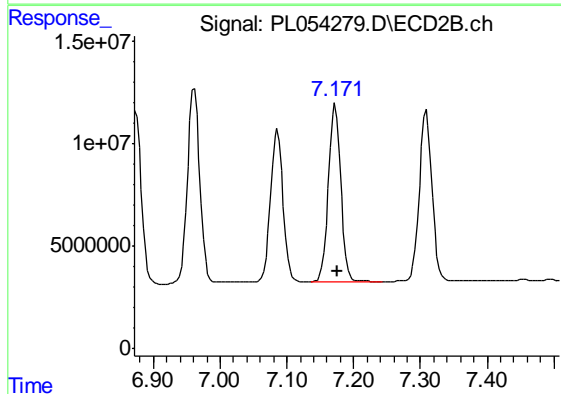
R.T.: 6.874 min  
 Delta R.T.: -0.003 min  
 Response: 107449297  
 Conc: 51.56 ng/ml



#17 4,4'-DDT

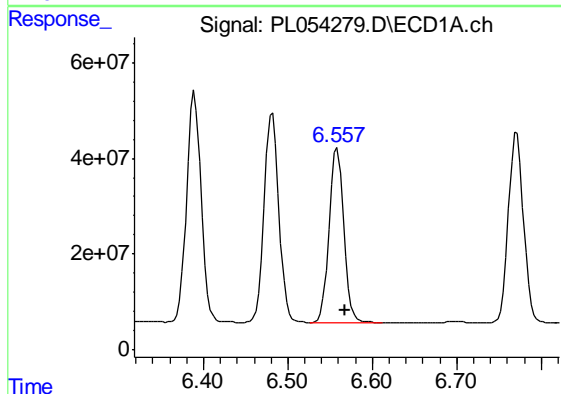
R.T.: 6.482 min  
 Delta R.T.: -0.009 min  
 Response: 531262755  
 Conc: 53.63 ng/ml

Instrument :  
 ECD\_L  
 ClientSampleId :  
 8-(8-10)MS



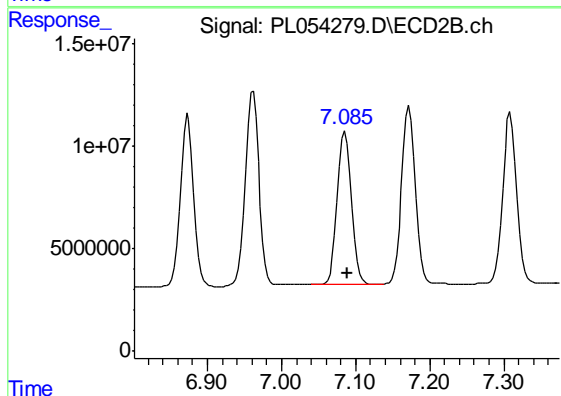
#17 4,4'-DDT

R.T.: 7.173 min  
 Delta R.T.: -0.003 min  
 Response: 114269524  
 Conc: 49.41 ng/ml



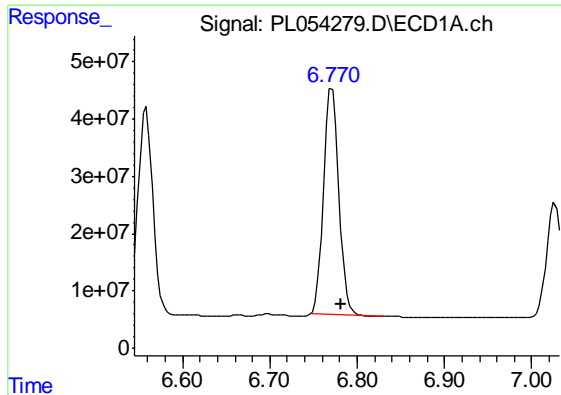
#18 Endrin aldehyde

R.T.: 6.559 min  
 Delta R.T.: -0.008 min  
 Response: 439217860  
 Conc: 47.90 ng/ml



#18 Endrin aldehyde

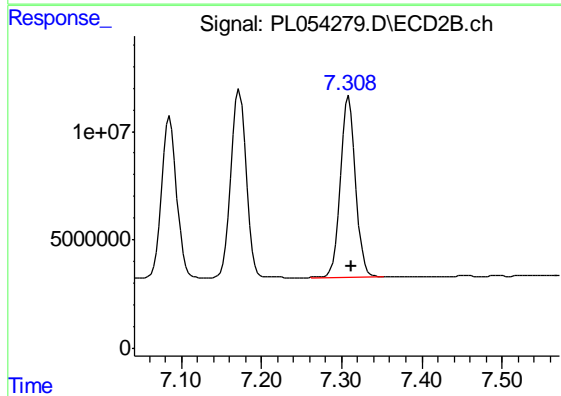
R.T.: 7.086 min  
 Delta R.T.: -0.003 min  
 Response: 98539383  
 Conc: 44.86 ng/ml



#19 Endosulfan Sulfate

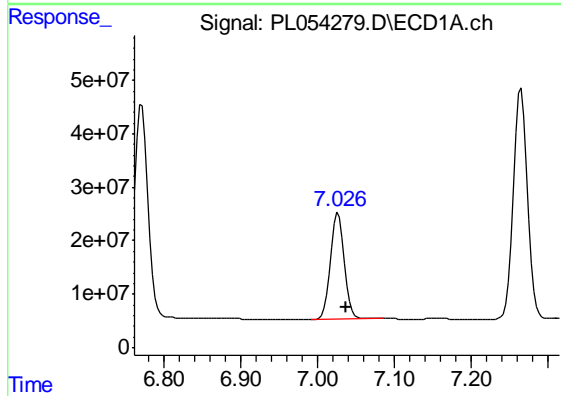
R.T.: 6.771 min  
 Delta R.T.: -0.010 min  
 Response: 487521958  
 Conc: 47.93 ng/ml

Instrument :  
 ECD\_L  
 ClientSampleId :  
 8-(8-10)MS



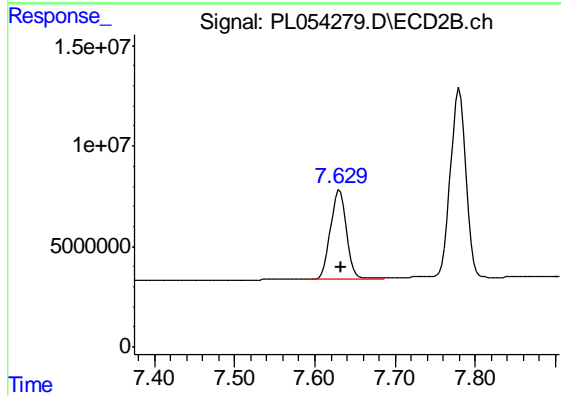
#19 Endosulfan Sulfate

R.T.: 7.309 min  
 Delta R.T.: -0.002 min  
 Response: 110195548  
 Conc: 44.91 ng/ml



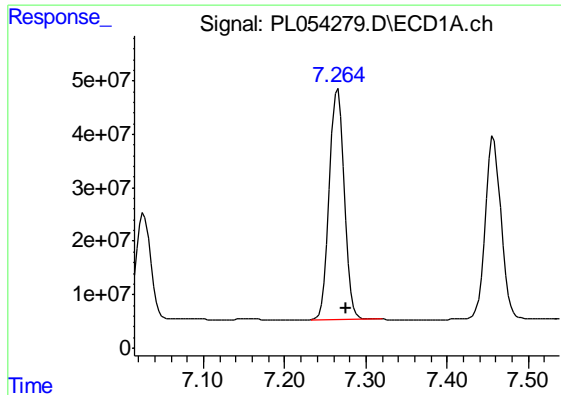
#20 Methoxychlor

R.T.: 7.027 min  
 Delta R.T.: -0.010 min  
 Response: 248042643  
 Conc: 50.31 ng/ml



#20 Methoxychlor

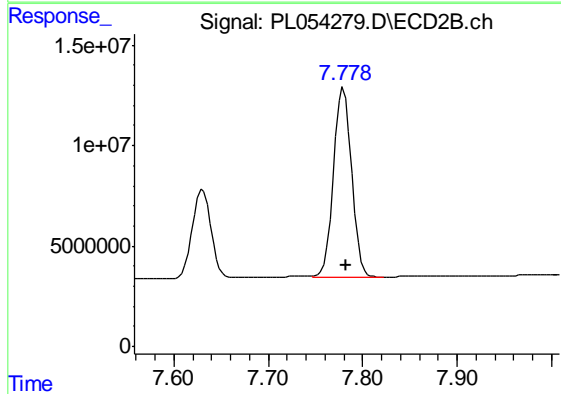
R.T.: 7.631 min  
 Delta R.T.: -0.003 min  
 Response: 61142964  
 Conc: 47.07 ng/ml



#21 Endrin ketone

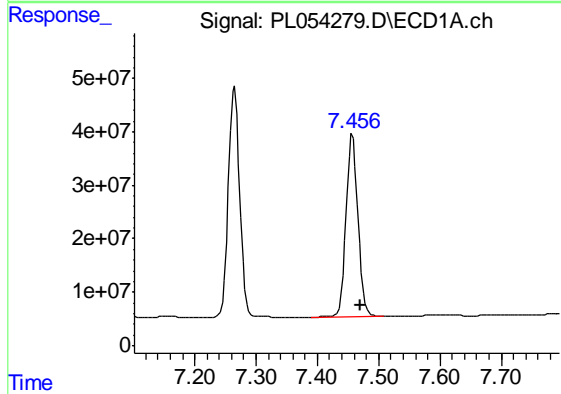
R.T.: 7.265 min  
 Delta R.T.: -0.010 min  
 Response: 550560570  
 Conc: 51.14 ng/ml

Instrument :  
 ECD\_L  
 ClientSampled :  
 8-(8-10)MS



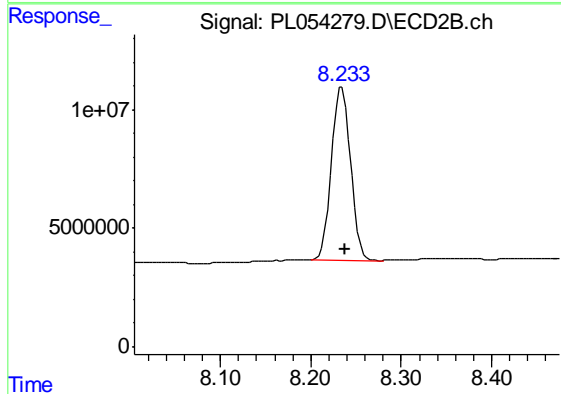
#21 Endrin ketone

R.T.: 7.780 min  
 Delta R.T.: -0.003 min  
 Response: 126546500  
 Conc: 49.08 ng/ml



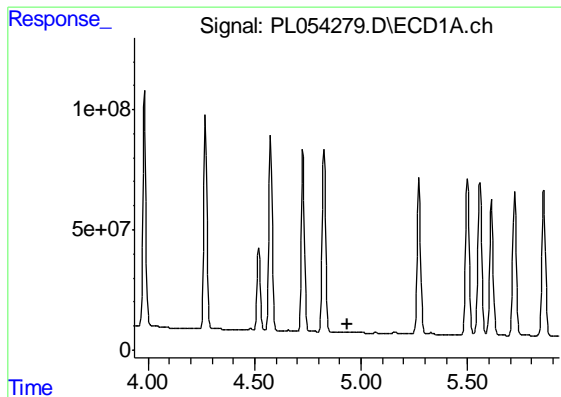
#22 Mirex

R.T.: 7.458 min  
 Delta R.T.: -0.012 min  
 Response: 462179843  
 Conc: 54.04 ng/ml



#22 Mirex

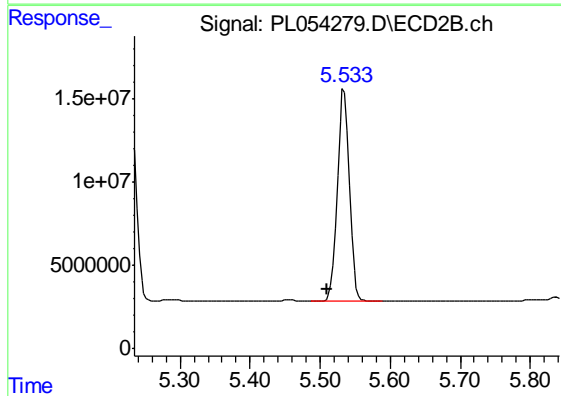
R.T.: 8.235 min  
 Delta R.T.: -0.004 min  
 Response: 106690264  
 Conc: 52.74 ng/ml



#24 Chlordane-2

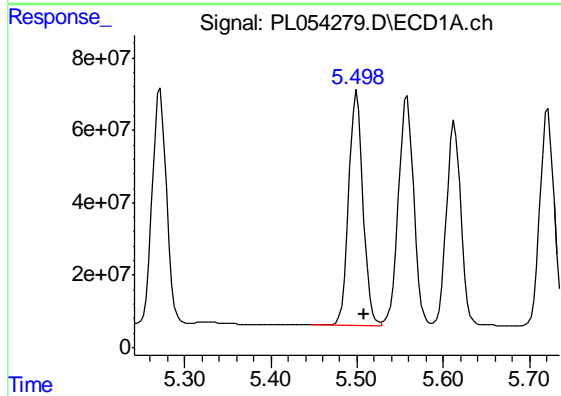
R.T.: 0.000 min  
 Exp R.T. : 4.934 min  
 Response: 0  
 Conc: N.D.

Instrument :  
 ECD\_L  
 ClientSampled :  
 8-(8-10)MS



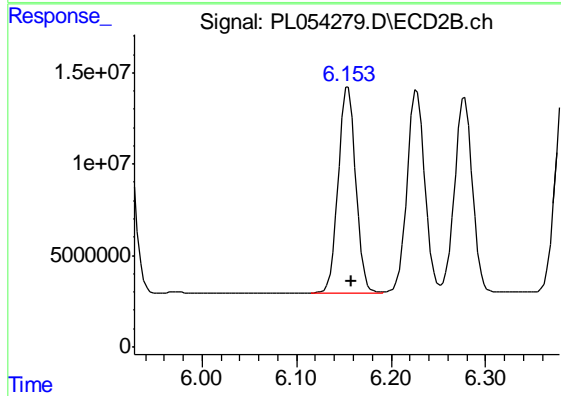
#24 Chlordane-2

R.T.: 5.534 min  
 Delta R.T.: 0.024 min  
 Response: 150720005  
 Conc: 1534.49 ng/ml



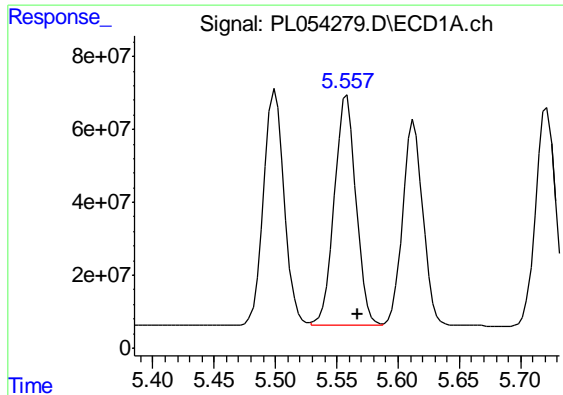
#25 Chlordane-3

R.T.: 5.500 min  
 Delta R.T.: -0.009 min  
 Response: 759992039  
 Conc: 659.32 ng/ml



#25 Chlordane-3

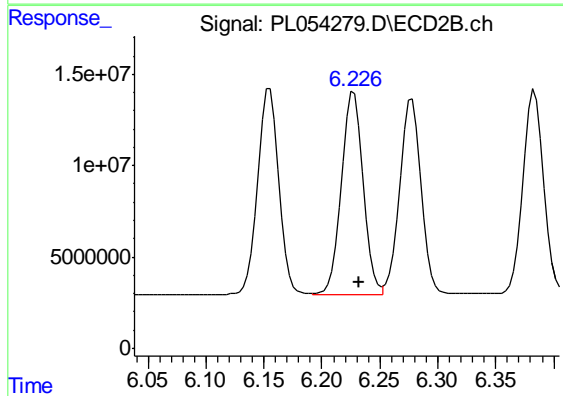
R.T.: 6.155 min  
 Delta R.T.: -0.004 min  
 Response: 143304096  
 Conc: 392.37 ng/ml



#26 Chlordane-4

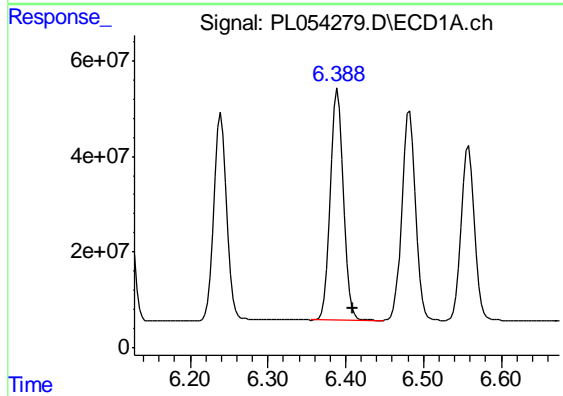
R.T.: 5.558 min  
 Delta R.T.: -0.009 min  
 Response: 781898987  
 Conc: 834.07 ng/ml

Instrument :  
 ECD\_L  
 ClientSampled :  
 8-(8-10)MS



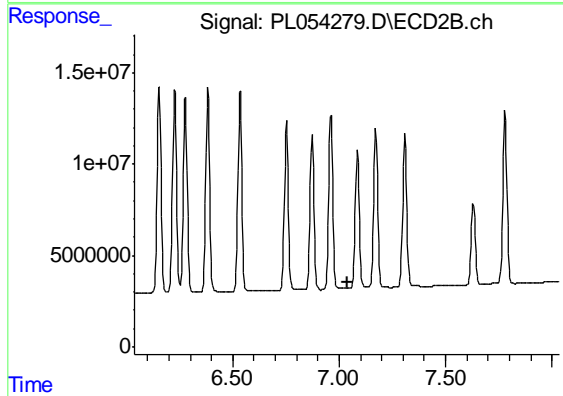
#26 Chlordane-4

R.T.: 6.228 min  
 Delta R.T.: -0.004 min  
 Response: 145030000  
 Conc: 323.05 ng/ml



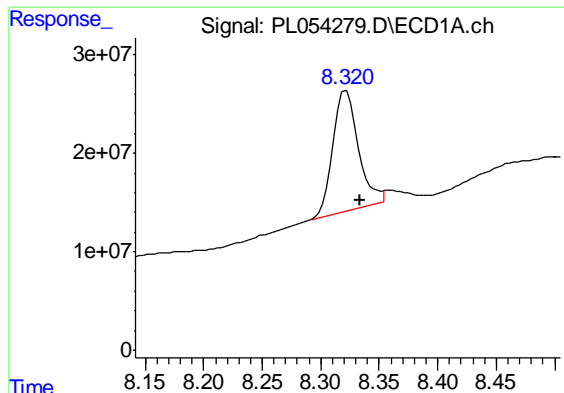
#27 Chlordane-5

R.T.: 6.390 min  
 Delta R.T.: -0.019 min  
 Response: 574639070  
 Conc: 1572.01 ng/ml



#27 Chlordane-5

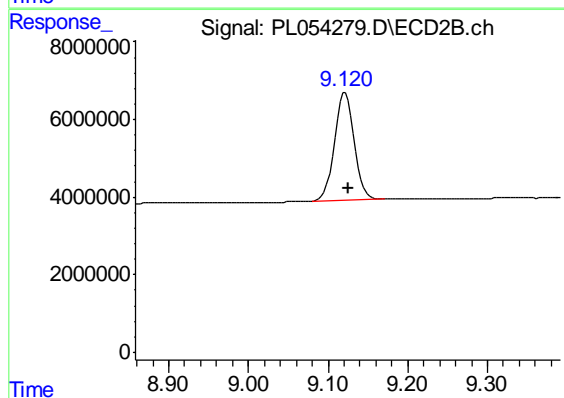
R.T.: 0.000 min  
 Exp R.T. : 7.037 min  
 Response: 0  
 Conc: N.D.



#28 Decachlorobiphenyl

R.T.: 8.322 min  
Delta R.T.: -0.012 min  
Response: 182638057  
Conc: 18.61 ng/ml

Instrument :  
ECD\_L  
ClientSampleId :  
8-(8-10)MS



#28 Decachlorobiphenyl

R.T.: 9.121 min  
Delta R.T.: -0.005 min  
Response: 48237401  
Conc: 17.13 ng/ml