

Data Path : Z:\pestpcbsrv\HPCHEM1\ECD_L\Data\PL111523\
 Data File : PL086666.D
 Signal(s) : Signal #1: ECD1A.ch Signal #2: ECD2B.ch
 Acq On : 15 Nov 2023 12:38
 Operator : AR\AJ
 Sample : I.BLK
 Misc :
 ALS Vial : 2 Sample Multiplier: 1

Instrument :
 ECD_L
 ClientSampleId :

Integration File signal 1: autoint1.e
 Integration File signal 2: autoint2.e
 Quant Time: Nov 15 12:54:51 2023
 Quant Method : Z:\pestpcbsrv\HPCHEM1\ECD_L\methods\PL110823.M
 Quant Title : GC Extractables
 QLast Update : Wed Nov 08 13:04:14 2023
 Response via : Initial Calibration
 Integrator: ChemStation

Volume Inj. : 1 µl
 Signal #1 Phase : ZB-MR2 Signal #2 Phase: ZB-MR1
 Signal #1 Info : 30M x 0.32mm x0.2 Signal #2 Info : 30M x 0.32mm x0.5µm

Compound	RT#1	RT#2	Resp#1	Resp#2	ng/ml	ng/ml

System Monitoring Compounds						
1) SA Tetrachlo...	3.350	2.616	76392500	22627070	23.527	22.980
28) SA Decachlor...	8.849	7.766	76962028	30729834	26.293	25.447
Target Compounds						
3) MA gamma-BHC...	4.155f	0.000	211574	0	0.045	N.D. #
4) MA Heptachlor	4.729	3.792	315929	88571	0.069	0.066
5) MB Aldrin	0.000	4.075f	0	211404	N.D.	0.162 #
6) B beta-BHC	0.000	3.750	0	235064	N.D.	0.394 #
7) B delta-BHC	4.583	3.972	2960431	16359	0.645	0.013 #
9) A Endosulfan I	5.863	4.942	2619036	304010	0.698	0.264 #
10) B gamma-Chl...	5.748	0.000	2409926	0	0.588	N.D. #
13) MA Dieldrin	0.000	5.203	0	139738	N.D.	0.117 #
14) MA Endrin	0.000	5.488f	0	599739	N.D.	0.548 #
15) B Endosulfa...	6.604	5.745f	4713357	160527	1.326	0.146 #
16) A 4,4'-DDD	6.533	0.000	1226500	0	0.461	N.D. #
18) B Endrin al...	0.000	5.950	0	1452519	N.D.	1.551 #
19) B Endosulfa...	0.000	6.167	0	33528	N.D.	0.031 #
22) Mirex	0.000	6.845	0	55693	N.D.	0.049 #
23) Chlordane-1	0.000	3.615	0	63322	N.D.	1.807 #
24) Chlordane-2	0.000	4.171	0	71516	N.D.	1.583 #
25) Chlordane-3	5.748	0.000	2409926	0	4.166	N.D. #
26) Chlordane-4	5.863f	0.000	2619036	0	3.663	N.D. #

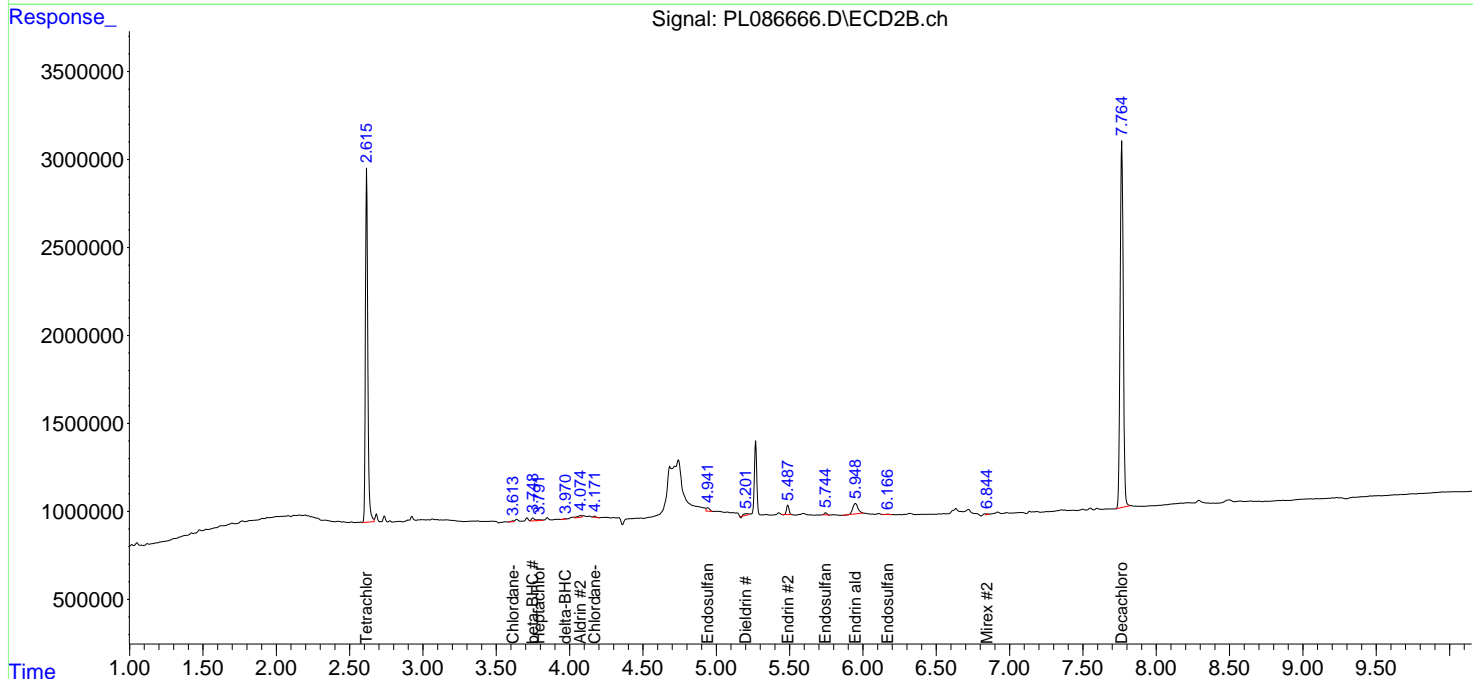
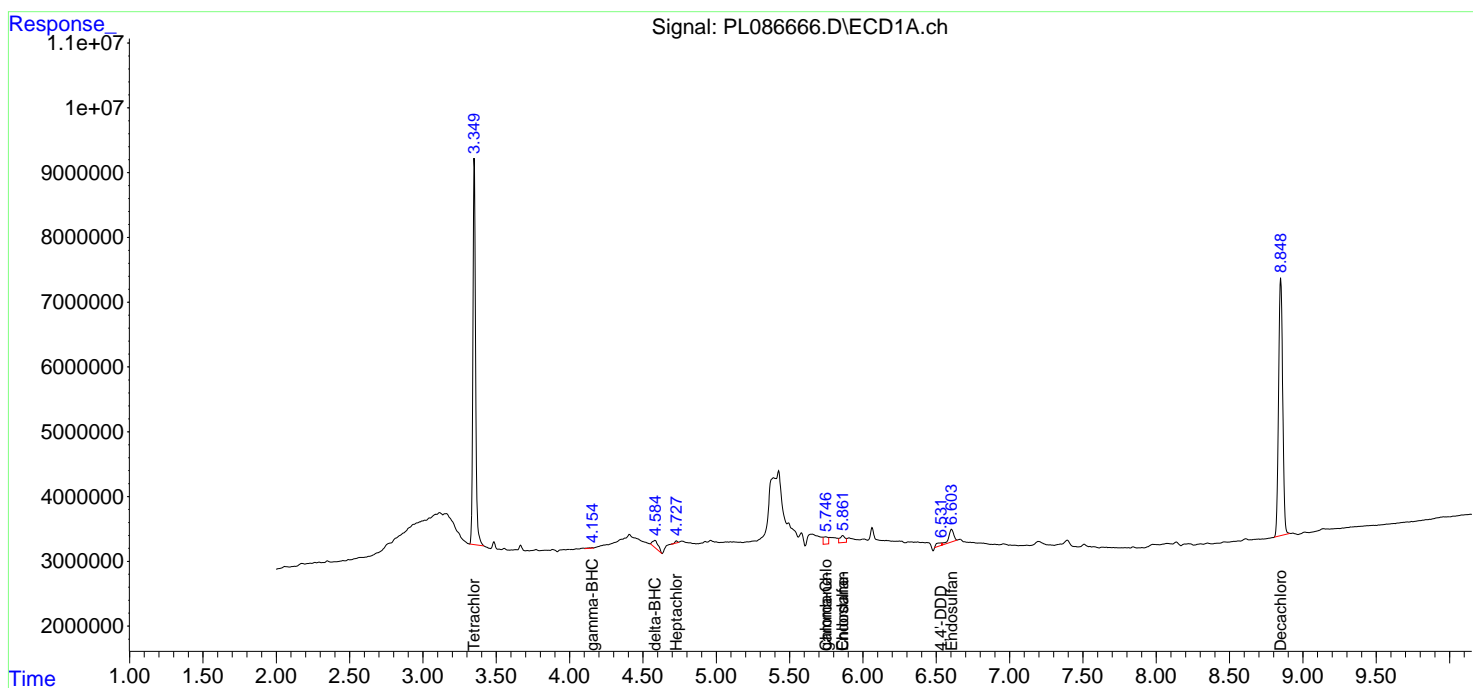
(f)=RT Delta > 1/2 Window (#)=Amounts differ by > 25% (m)=manual int.

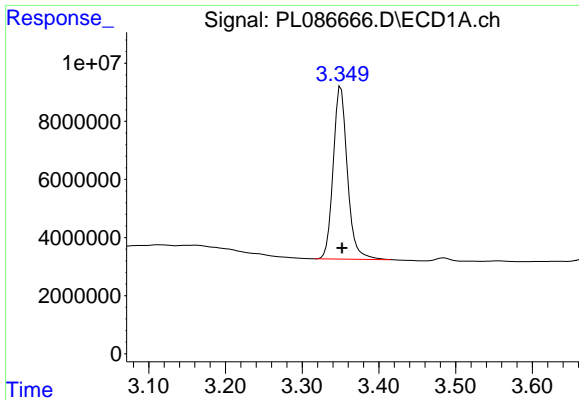
Data Path : Z:\pestpcbsrv\HPCHEM1\ECD_L\Data\PL111523\
 Data File : PL086666.D
 Signal(s) : Signal #1: ECD1A.ch Signal #2: ECD2B.ch
 Acq On : 15 Nov 2023 12:38
 Operator : AR\AJ
 Sample : I.BLK
 Misc :
 ALS Vial : 2 Sample Multiplier: 1

Instrument :
 ECD_L
 ClientSampleId :

Integration File signal 1: autoint1.e
 Integration File signal 2: autoint2.e
 Quant Time: Nov 15 12:54:51 2023
 Quant Method : Z:\pestpcbsrv\HPCHEM1\ECD_L\methods\PL110823.M
 Quant Title : GC Extractables
 QLast Update : Wed Nov 08 13:04:14 2023
 Response via : Initial Calibration
 Integrator: ChemStation

Volume Inj. : 1 µl
 Signal #1 Phase : ZB-MR2 Signal #2 Phase: ZB-MR1
 Signal #1 Info : 30M x 0.32mm x0.2 Signal #2 Info : 30M x 0.32mm x0.5µm

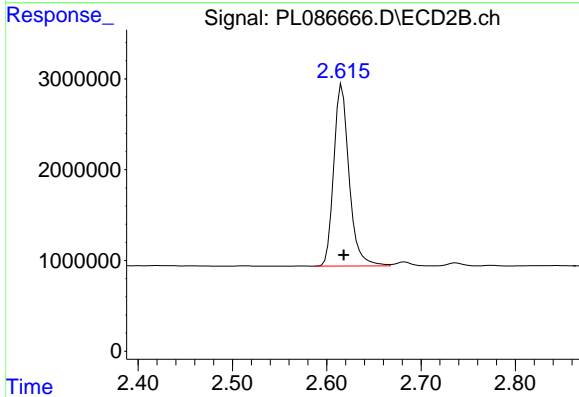




#1 Tetrachloro-m-xylene

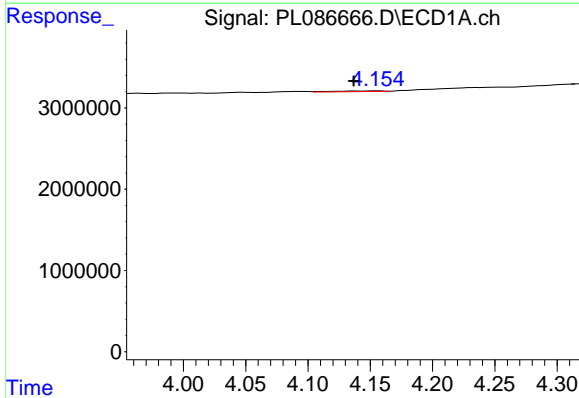
R.T.: 3.350 min
 Delta R.T.: -0.002 min
 Response: 76392500
 Conc: 23.53 ng/ml

Instrument :
 ECD_L
 ClientSampleId :



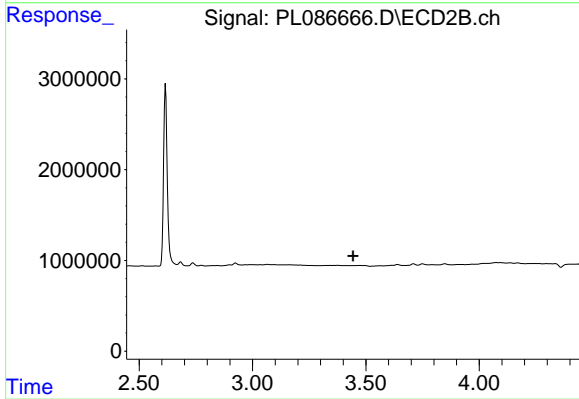
#1 Tetrachloro-m-xylene

R.T.: 2.616 min
 Delta R.T.: -0.002 min
 Response: 22627070
 Conc: 22.98 ng/ml



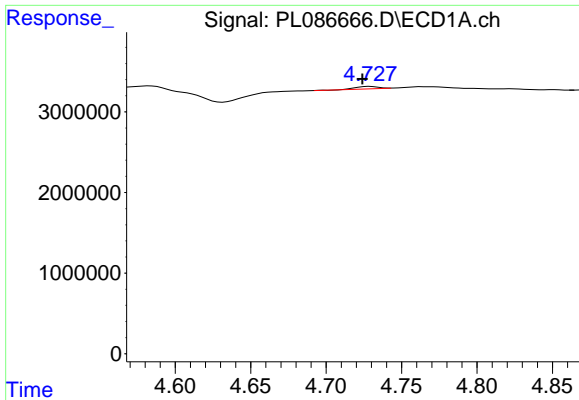
#3 gamma-BHC (Lindane)

R.T.: 4.155 min
 Delta R.T.: 0.019 min
 Response: 211574
 Conc: 0.04 ng/ml



#3 gamma-BHC (Lindane)

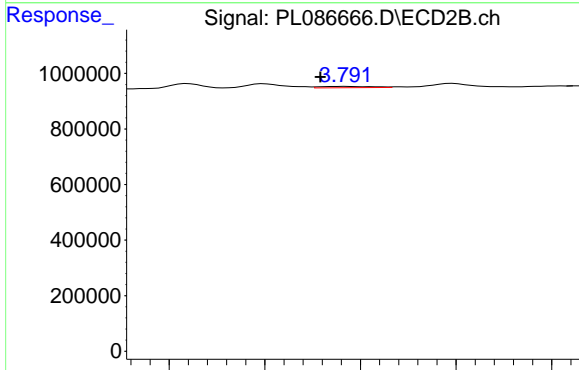
R.T.: 0.000 min
 Exp R.T. : 3.443 min
 Response: 0
 Conc: N.D.



#4 Heptachlor

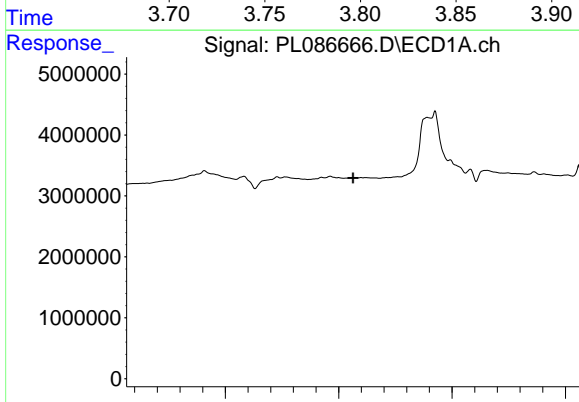
R.T.: 4.729 min
 Delta R.T.: 0.005 min
 Response: 315929
 Conc: 0.07 ng/ml

Instrument :
 ECD_L
 ClientSampleId :



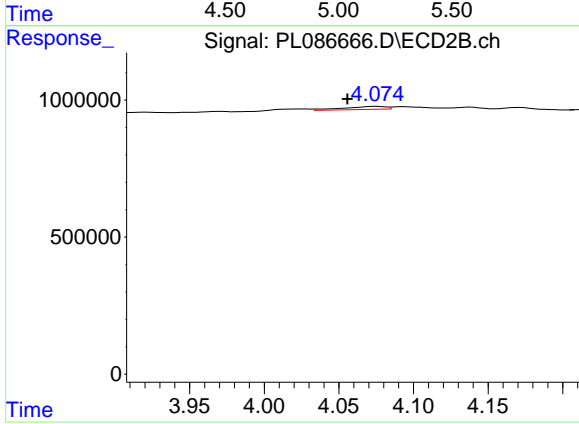
#4 Heptachlor

R.T.: 3.792 min
 Delta R.T.: 0.013 min
 Response: 88571
 Conc: 0.07 ng/ml



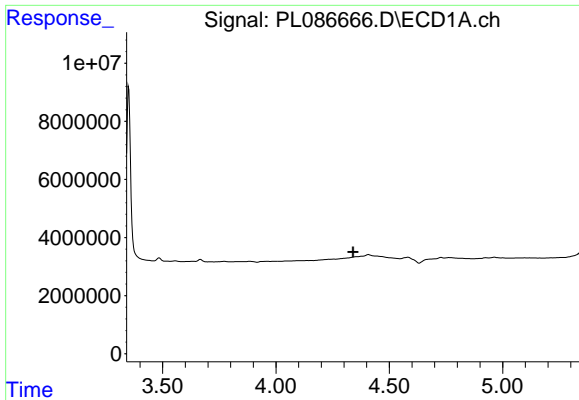
#5 Aldrin

R.T.: 0.000 min
 Exp R.T. : 5.063 min
 Response: 0
 Conc: N.D.



#5 Aldrin

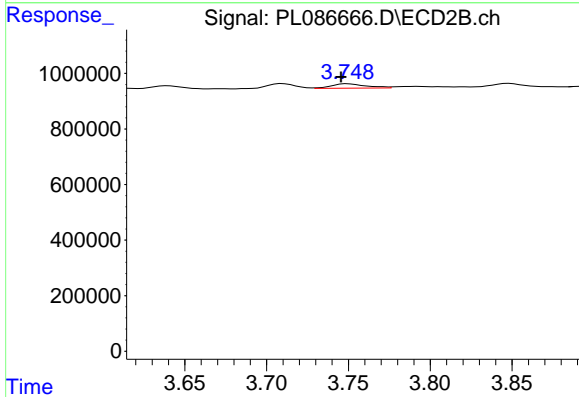
R.T.: 4.075 min
 Delta R.T.: 0.020 min
 Response: 211404
 Conc: 0.16 ng/ml



#6 beta-BHC

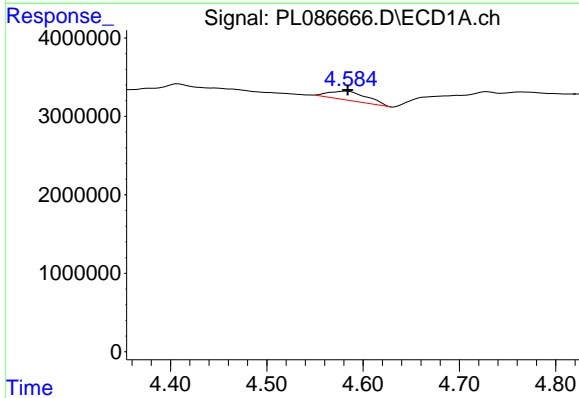
R.T.: 0.000 min
 Exp R.T.: 4.340 min
 Response: 0
 Conc: N.D.

Instrument :
 ECD_L
 ClientSampleId :



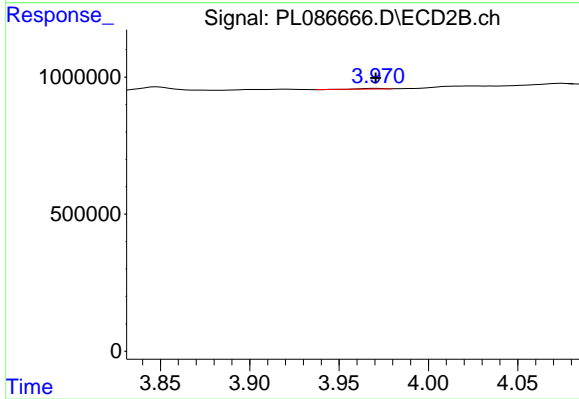
#6 beta-BHC

R.T.: 3.750 min
 Delta R.T.: 0.004 min
 Response: 235064
 Conc: 0.39 ng/ml



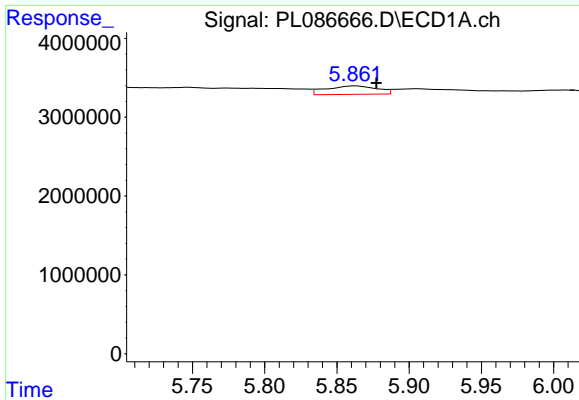
#7 delta-BHC

R.T.: 4.583 min
 Delta R.T.: 0.000 min
 Response: 2960431
 Conc: 0.64 ng/ml



#7 delta-BHC

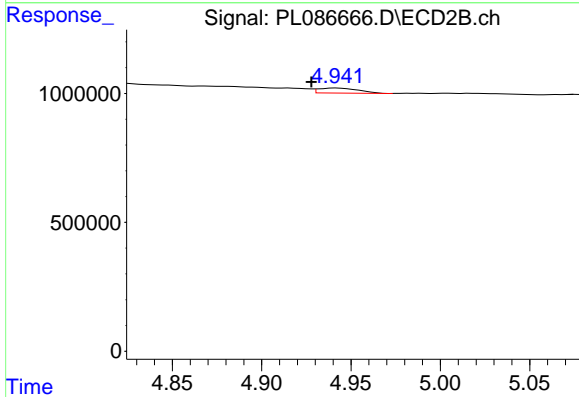
R.T.: 3.972 min
 Delta R.T.: 0.001 min
 Response: 16359
 Conc: 0.01 ng/ml



#9 Endosulfan I

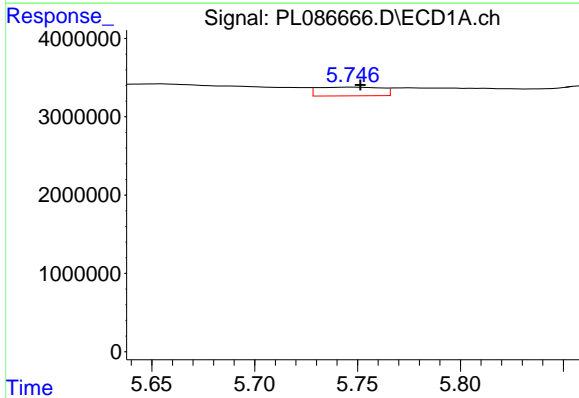
R.T.: 5.863 min
 Delta R.T.: -0.015 min
 Response: 2619036
 Conc: 0.70 ng/ml

Instrument :
 ECD_L
 ClientSampleId :



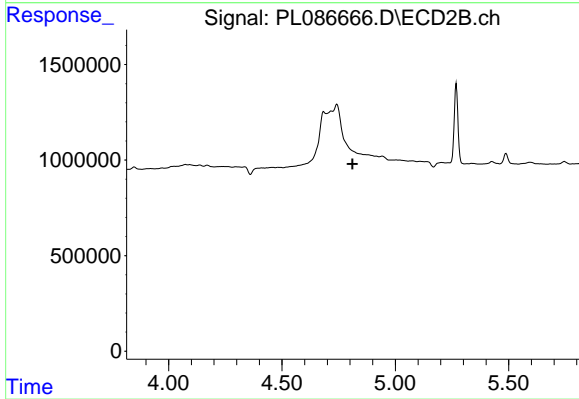
#9 Endosulfan I

R.T.: 4.942 min
 Delta R.T.: 0.015 min
 Response: 304010
 Conc: 0.26 ng/ml



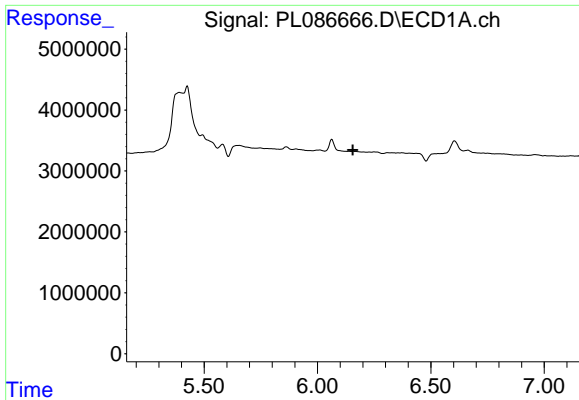
#10 gamma-Chlordane

R.T.: 5.748 min
 Delta R.T.: -0.004 min
 Response: 2409926
 Conc: 0.59 ng/ml



#10 gamma-Chlordane

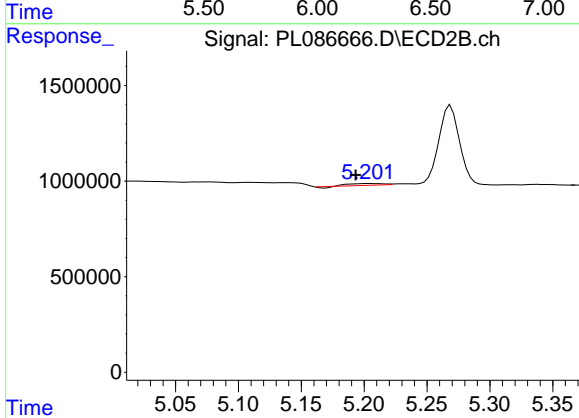
R.T.: 0.000 min
 Exp R.T. : 4.811 min
 Response: 0
 Conc: N.D.



#13 Dieldrin

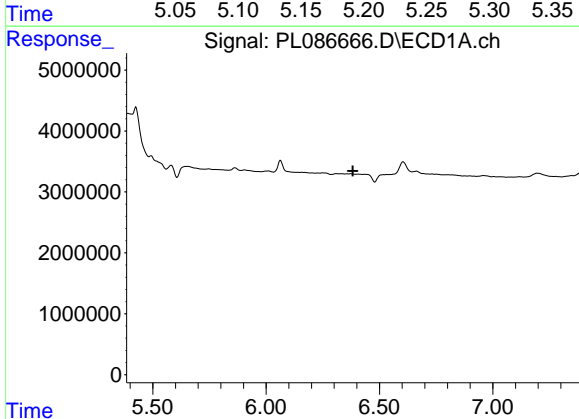
R.T.: 0.000 min
 Exp R.T.: 6.155 min
 Response: 0
 Conc: N.D.

Instrument :
 ECD_L
 ClientSampleId :



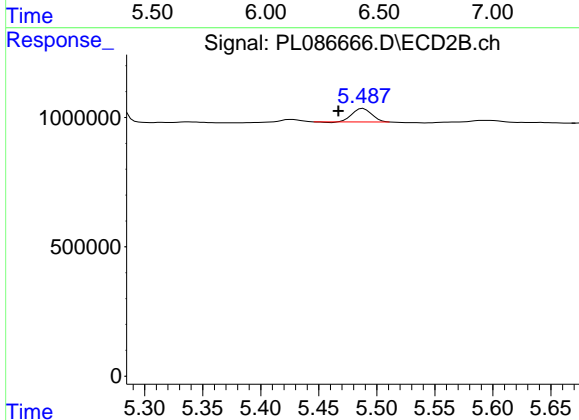
#13 Dieldrin

R.T.: 5.203 min
 Delta R.T.: 0.010 min
 Response: 139738
 Conc: 0.12 ng/ml



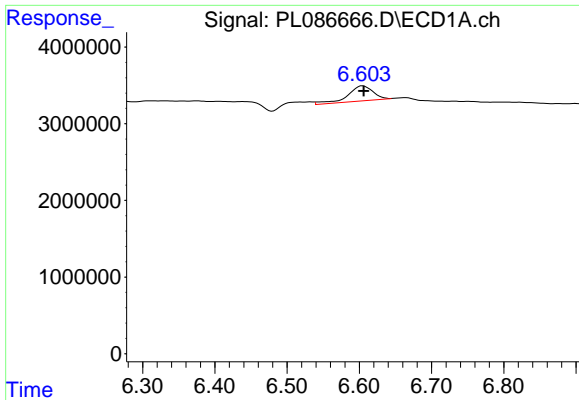
#14 Endrin

R.T.: 0.000 min
 Exp R.T.: 6.383 min
 Response: 0
 Conc: N.D.



#14 Endrin

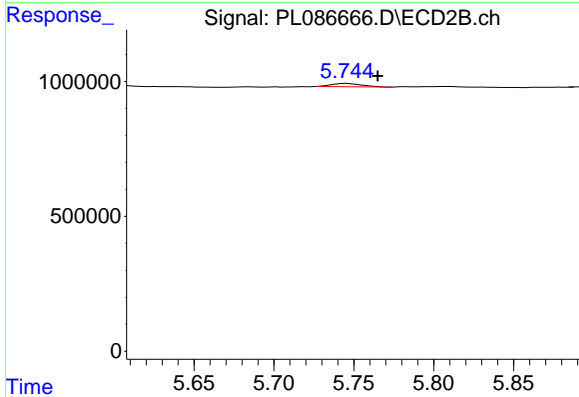
R.T.: 5.488 min
 Delta R.T.: 0.022 min
 Response: 599739
 Conc: 0.55 ng/ml



#15 Endosulfan II

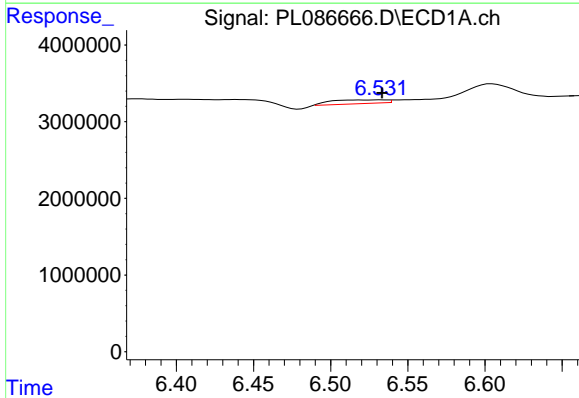
R.T.: 6.604 min
 Delta R.T.: -0.001 min
 Response: 4713357
 Conc: 1.33 ng/ml

Instrument :
 ECD_L
 ClientSampleId :



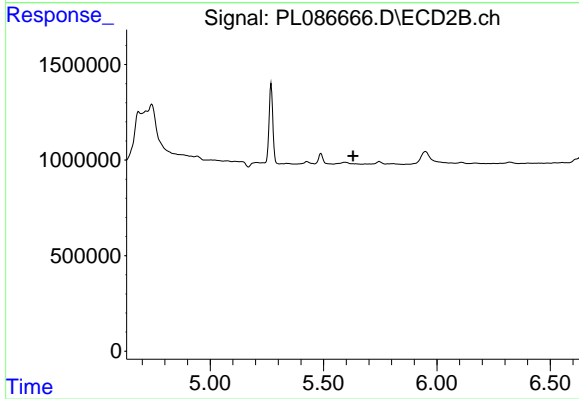
#15 Endosulfan II

R.T.: 5.745 min
 Delta R.T.: -0.020 min
 Response: 160527
 Conc: 0.15 ng/ml



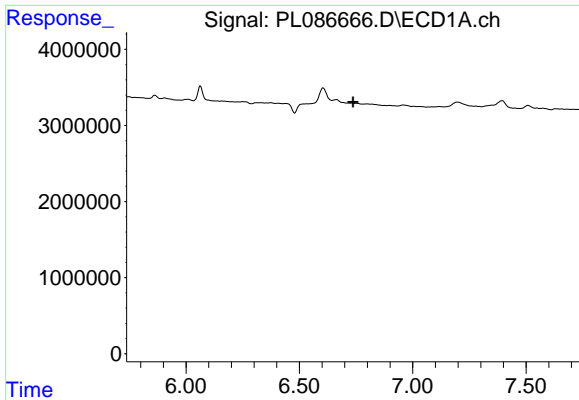
#16 4,4'-DDD

R.T.: 6.533 min
 Delta R.T.: 0.000 min
 Response: 1226500
 Conc: 0.46 ng/ml



#16 4,4'-DDD

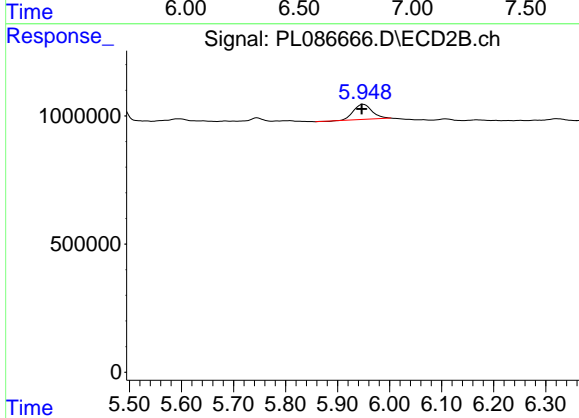
R.T.: 0.000 min
 Exp R.T. : 5.631 min
 Response: 0
 Conc: N.D.



#18 Endrin aldehyde

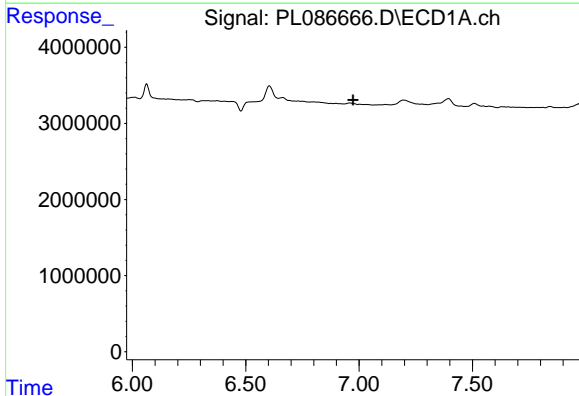
R.T.: 0.000 min
 Exp R.T.: 6.737 min
 Response: 0
 Conc: N.D.

Instrument :
 ECD_L
 ClientSampleId :



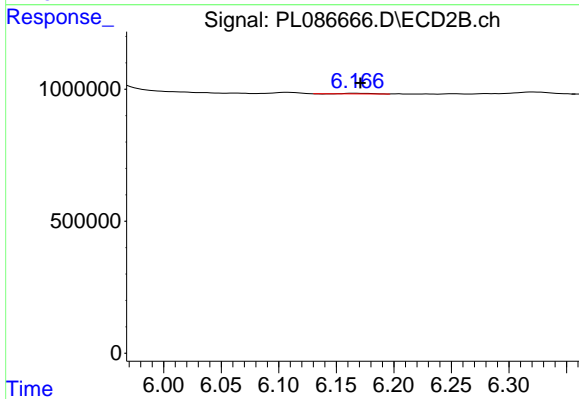
#18 Endrin aldehyde

R.T.: 5.950 min
 Delta R.T.: 0.003 min
 Response: 1452519
 Conc: 1.55 ng/ml



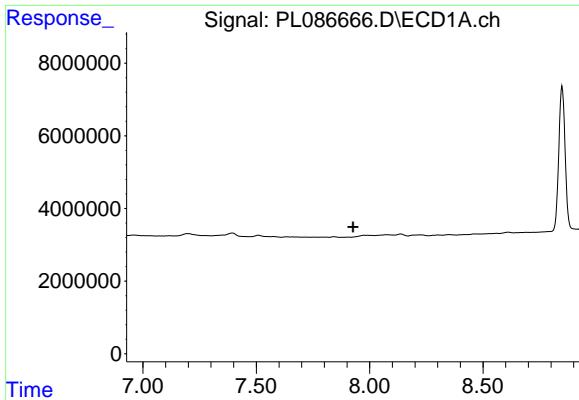
#19 Endosulfan Sulfate

R.T.: 0.000 min
 Exp R.T.: 6.974 min
 Response: 0
 Conc: N.D.



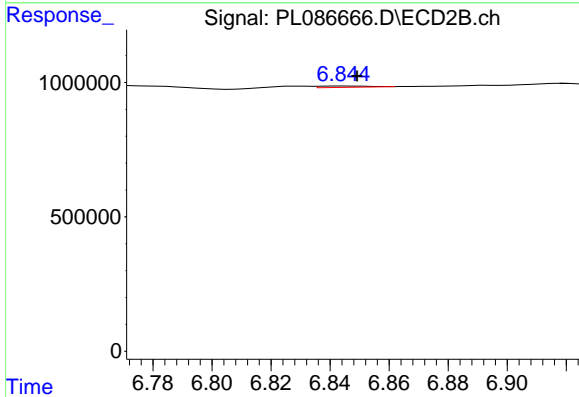
#19 Endosulfan Sulfate

R.T.: 6.167 min
 Delta R.T.: -0.004 min
 Response: 33528
 Conc: 0.03 ng/ml

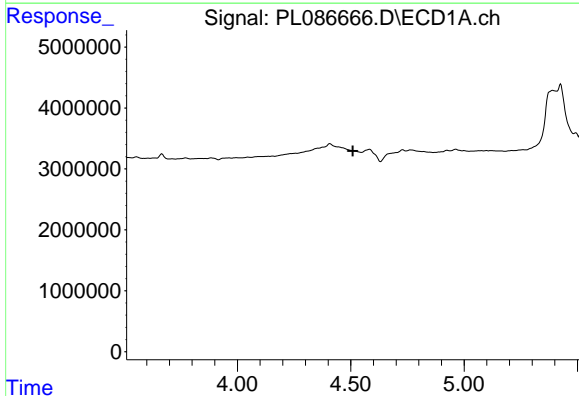


#22 Mirex
 R.T.: 0.000 min
 Exp R.T. : 7.926 min
 Response: 0
 Conc: N.D.

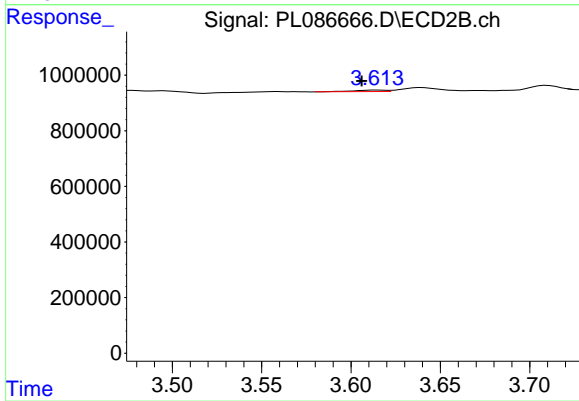
Instrument :
 ECD_L
 ClientSampleId :



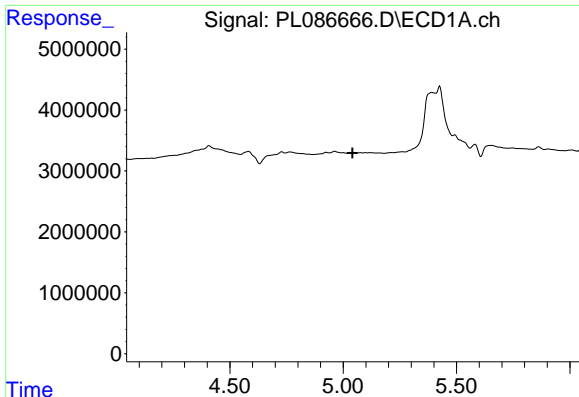
#22 Mirex
 R.T.: 6.845 min
 Delta R.T.: -0.004 min
 Response: 55693
 Conc: 0.05 ng/ml



#23 Chlordane-1
 R.T.: 0.000 min
 Exp R.T. : 4.509 min
 Response: 0
 Conc: N.D.



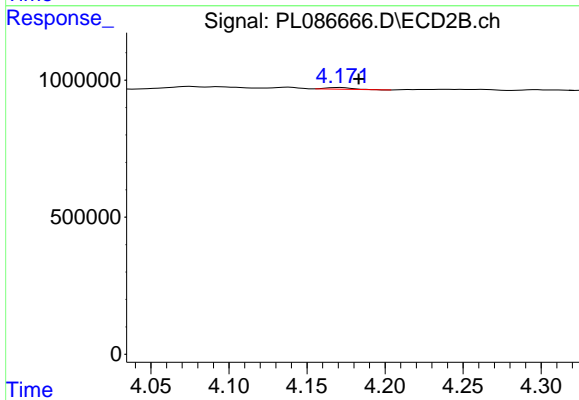
#23 Chlordane-1
 R.T.: 3.615 min
 Delta R.T.: 0.009 min
 Response: 63322
 Conc: 1.81 ng/ml



#24 Chlordane-2

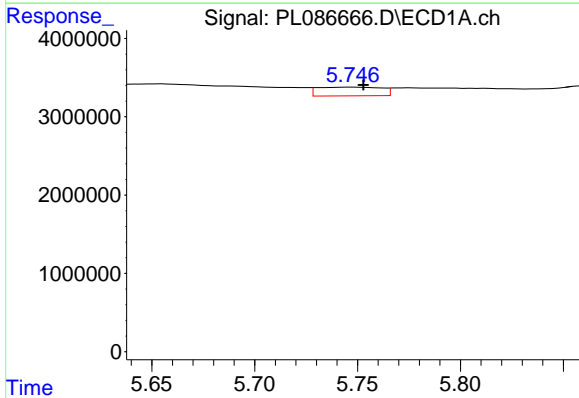
R.T.: 0.000 min
 Exp R.T.: 5.041 min
 Response: 0
 Conc: N.D.

Instrument :
 ECD_L
 ClientSampleId :



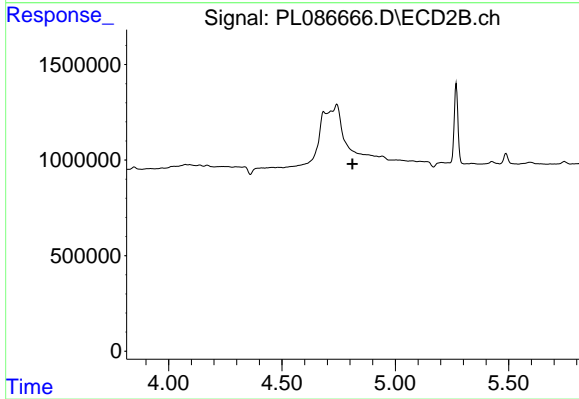
#24 Chlordane-2

R.T.: 4.171 min
 Delta R.T.: -0.012 min
 Response: 71516
 Conc: 1.58 ng/ml



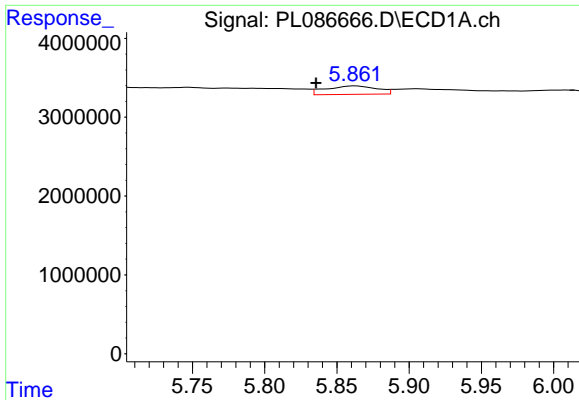
#25 Chlordane-3

R.T.: 5.748 min
 Delta R.T.: -0.005 min
 Response: 2409926
 Conc: 4.17 ng/ml



#25 Chlordane-3

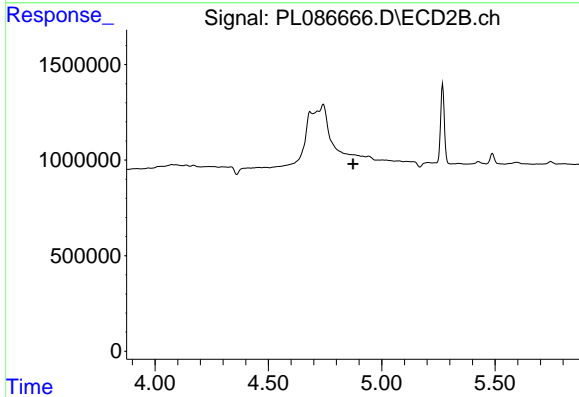
R.T.: 0.000 min
 Exp R.T.: 4.812 min
 Response: 0
 Conc: N.D.



#26 Chlordane-4

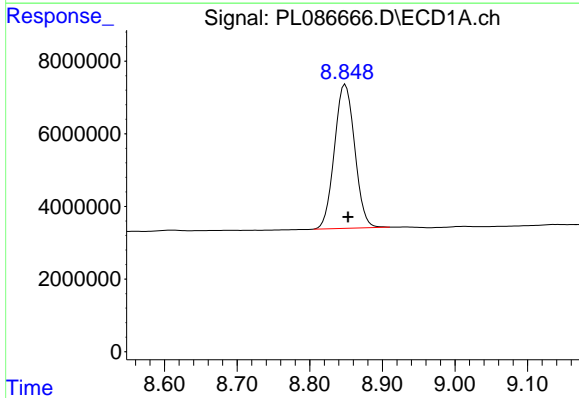
R.T.: 5.863 min
 Delta R.T.: 0.027 min
 Response: 2619036
 Conc: 3.66 ng/ml

Instrument :
 ECD_L
 ClientSampleId :



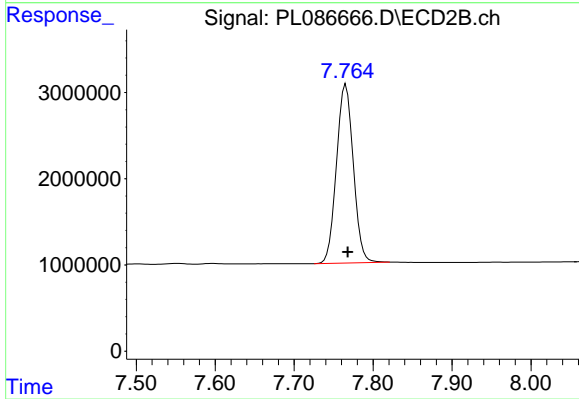
#26 Chlordane-4

R.T.: 0.000 min
 Exp R.T. : 4.874 min
 Response: 0
 Conc: N.D.



#28 Decachlorobiphenyl

R.T.: 8.849 min
 Delta R.T.: -0.004 min
 Response: 76962028
 Conc: 26.29 ng/ml



#28 Decachlorobiphenyl

R.T.: 7.766 min
 Delta R.T.: -0.002 min
 Response: 30729834
 Conc: 25.45 ng/ml