

Data Path : Z:\pestpcbsrv\HPCHEM1\ECD\_L\Data\PL111524\  
 Data File : PL093074.D  
 Signal(s) : Signal #1: ECD1A.ch Signal #2: ECD2B.ch  
 Acq On : 15 Nov 2024 11:32  
 Operator : AR\AJ  
 Sample : PEM  
 Misc :  
 ALS Vial : 3 Sample Multiplier: 1

Instrument :  
 ECD\_L  
 ClientSampleId :  
 PEM

Integration File signal 1: autoint1.e  
 Integration File signal 2: autoint2.e  
 Quant Time: Nov 15 20:53:25 2024  
 Quant Method : Z:\pestpcbsrv\HPCHEM1\ECD\_L\methods\PL102824.M  
 Quant Title : GC Extractables  
 QLast Update : Mon Oct 28 18:58:23 2024  
 Response via : Initial Calibration  
 Integrator: ChemStation

Volume Inj. : 1 µl  
 Signal #1 Phase : ZB-MR2 Signal #2 Phase: ZB-MR1  
 Signal #1 Info : 30M x 0.32mm x0.2 Signal #2 Info : 30M x 0.32mm x0.5µm

	Compound	RT#1	RT#2	Resp#1	Resp#2	ng/ml	ng/ml
-----							
System Monitoring Compounds							
1)	SA Tetrachlo...	3.538	2.776	45229623	49820266	18.459	18.308
28)	SA Decachlor...	9.056	7.916	37007379	54919338	19.229	20.123
Target Compounds							
2)	A alpha-BHC	3.994	3.279	31912528	35425166	9.409	8.878
3)	MA gamma-BHC...	4.326	3.609	29827290	32209403	9.151	8.346
4)	MA Heptachlor	0.000	3.978f	0	68639	N.D.	0.018 #
6)	B beta-BHC	4.524	3.909	13991027	16830348	9.679	10.223
7)	B delta-BHC	0.000	4.133	0	102504	N.D.	0.027 #
10)	B gamma-Chl...	0.000	4.975	0	12250593	N.D.	3.644 #
12)	B 4,4'-DDE	0.000	5.234	0	239824	N.D.	0.074 #
14)	MA Endrin	6.574	5.640	96047500	132.0E6	42.188	45.613
15)	B Endosulfa...	0.000	5.954f	0	781773	N.D.	0.276 #
16)	A 4,4'-DDD	0.000	5.790	0	1663122	N.D.	0.668 #
17)	MA 4,4'-DDT	7.025	6.038	175.0E6	273.1E6	84.544	101.831
18)	B Endrin al...	6.925	6.114	2352531	3097443	1.253	1.342
20)	A Methoxychlor	7.501	6.614	229.1E6	338.4E6	200.958	236.982
21)	B Endrin ke...	7.644	6.842	3682725	4521601	1.520	1.473
22)	Mirex	0.000	7.033	0	321370	N.D.	0.123 #
23)	Chlordane-1	0.000	3.758f	0	33210	N.D.	0.313 #
24)	Chlordane-2	0.000	4.326f	0	3876549	N.D.	31.300 #
25)	Chlordane-3	0.000	4.975	0	12250593	N.D.	33.778 #
27)	Chlordane-5	0.000	5.954	0	781773	N.D.	6.165 #

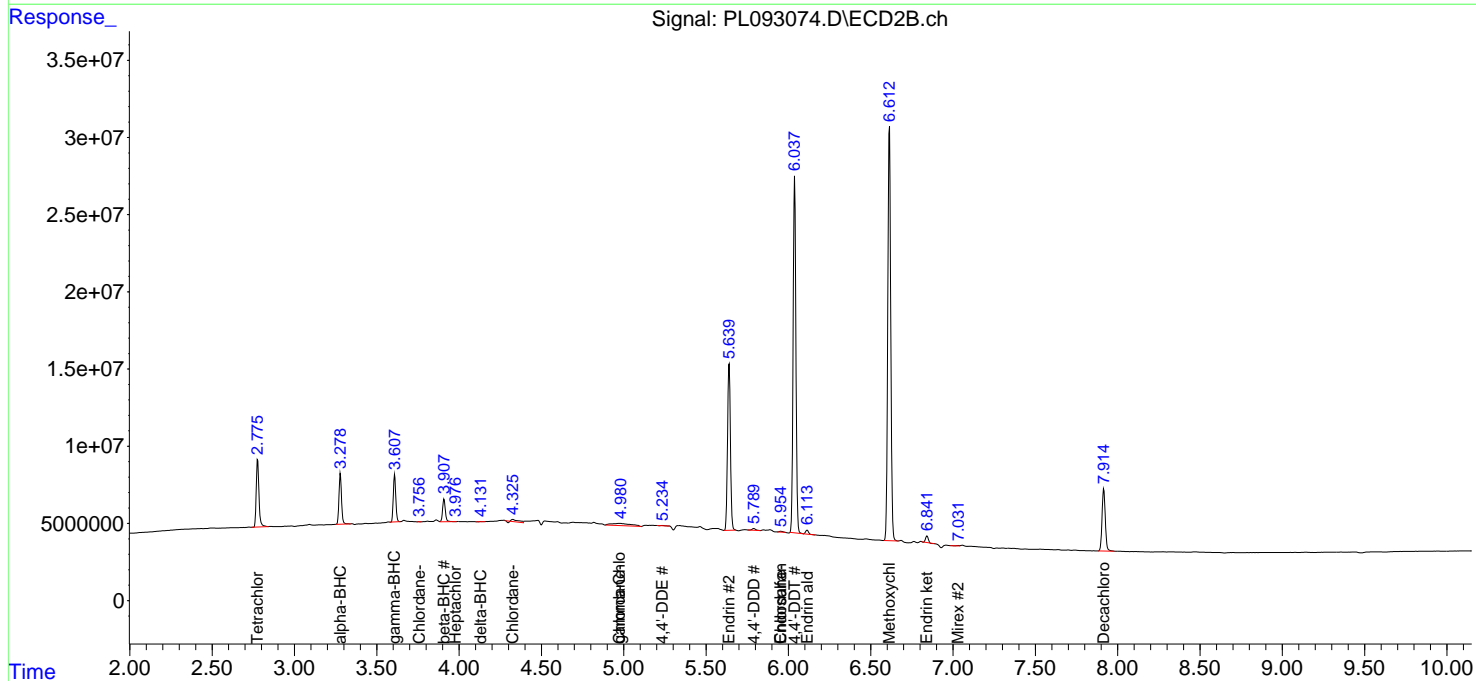
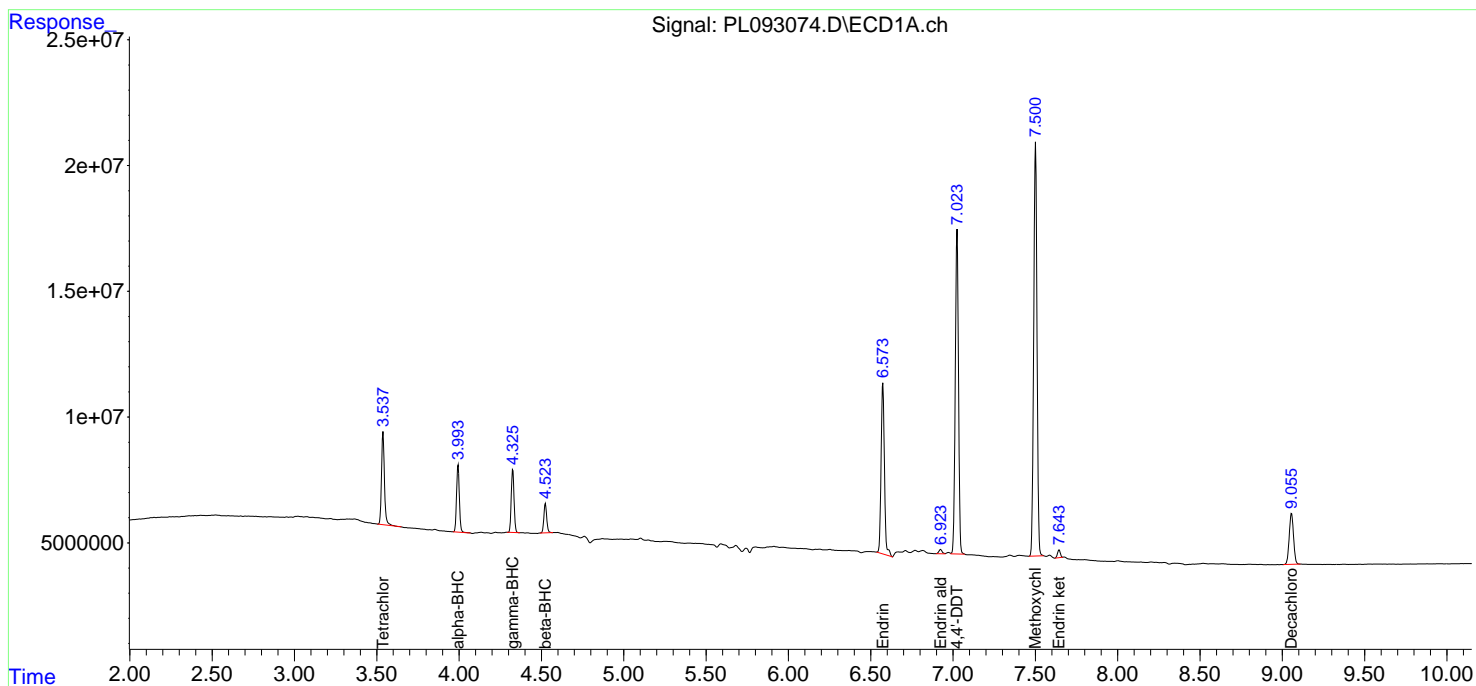
(f)=RT Delta > 1/2 Window (#)=Amounts differ by > 25% (m)=manual int.

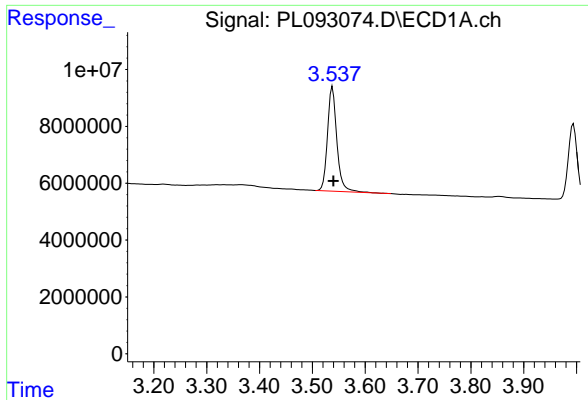
Data Path : Z:\pestpcbsrv\HPCHEM1\ECD\_L\Data\PL111524\  
 Data File : PL093074.D  
 Signal(s) : Signal #1: ECD1A.ch Signal #2: ECD2B.ch  
 Acq On : 15 Nov 2024 11:32  
 Operator : AR\AJ  
 Sample : PEM  
 Misc :  
 ALS Vial : 3 Sample Multiplier: 1

Instrument :  
 ECD\_L  
 ClientSampleId :  
 PEM

Integration File signal 1: autoint1.e  
 Integration File signal 2: autoint2.e  
 Quant Time: Nov 15 20:53:25 2024  
 Quant Method : Z:\pestpcbsrv\HPCHEM1\ECD\_L\methods\PL102824.M  
 Quant Title : GC Extractables  
 QLast Update : Mon Oct 28 18:58:23 2024  
 Response via : Initial Calibration  
 Integrator: ChemStation

Volume Inj. : 1 µl  
 Signal #1 Phase : ZB-MR2 Signal #2 Phase: ZB-MR1  
 Signal #1 Info : 30M x 0.32mm x0.2 Signal #2 Info : 30M x 0.32mm x0.5µm

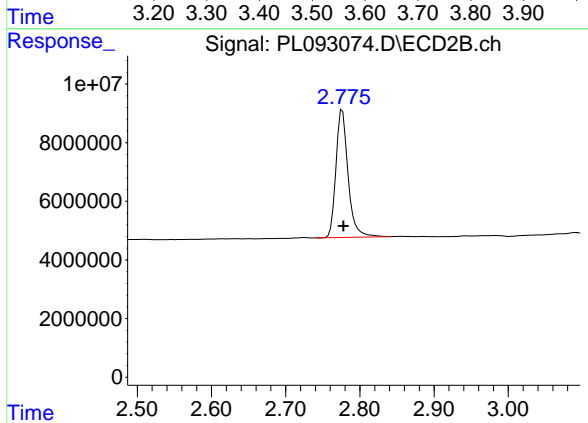




#1 Tetrachloro-m-xylene

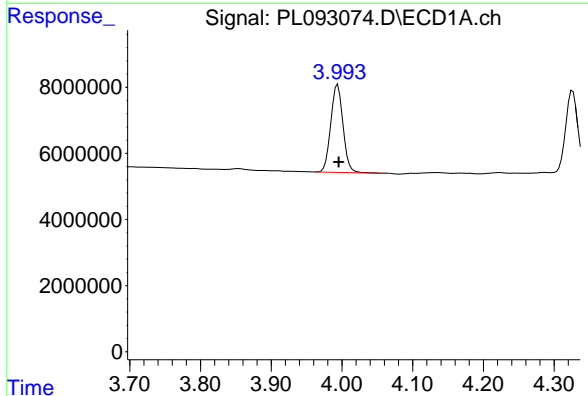
R.T.: 3.538 min  
 Delta R.T.: -0.002 min  
 Response: 45229623  
 Conc: 18.46 ng/ml

Instrument :  
 ECD\_L  
 ClientSampleId :  
 PEM



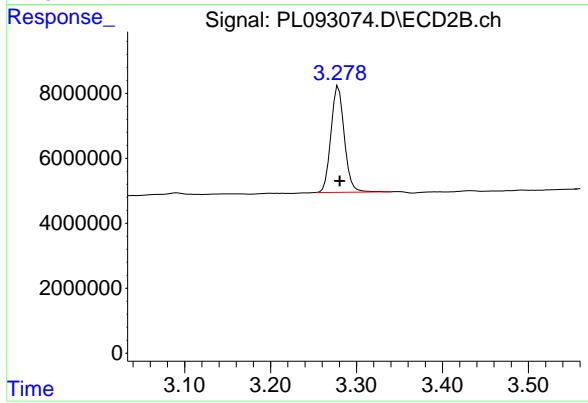
#1 Tetrachloro-m-xylene

R.T.: 2.776 min  
 Delta R.T.: -0.001 min  
 Response: 49820266  
 Conc: 18.31 ng/ml



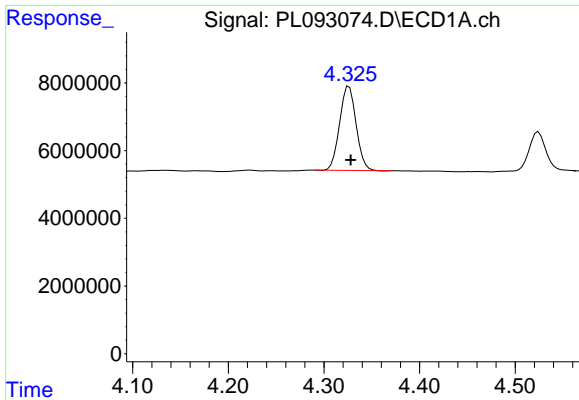
#2 alpha-BHC

R.T.: 3.994 min  
 Delta R.T.: -0.002 min  
 Response: 31912528  
 Conc: 9.41 ng/ml



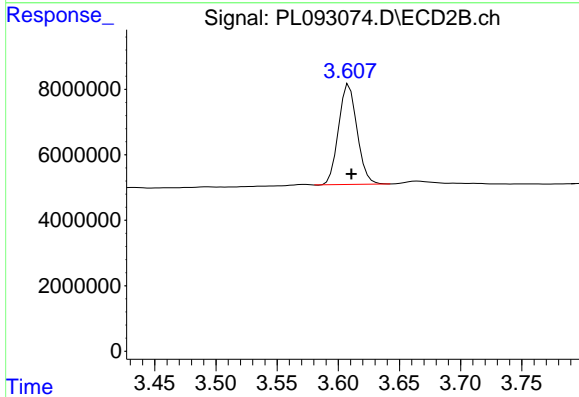
#2 alpha-BHC

R.T.: 3.279 min  
 Delta R.T.: -0.001 min  
 Response: 35425166  
 Conc: 8.88 ng/ml

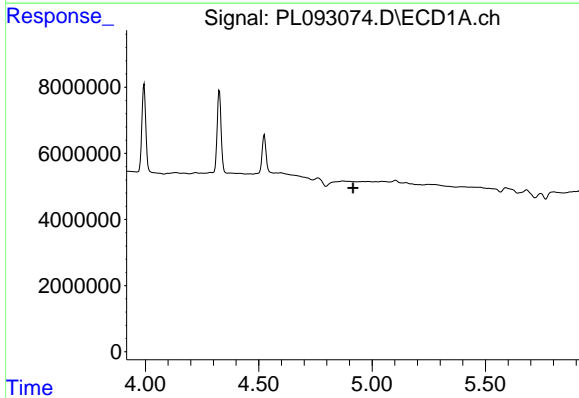


#3 gamma-BHC (Lindane)  
 R.T.: 4.326 min  
 Delta R.T.: -0.002 min  
 Response: 29827290  
 Conc: 9.15 ng/ml

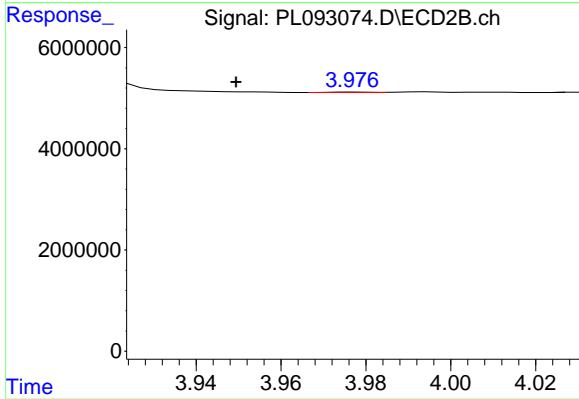
Instrument :  
 ECD\_L  
 ClientSampleId :  
 PEM



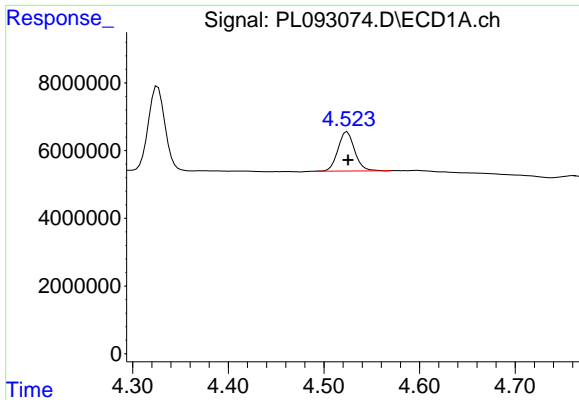
#3 gamma-BHC (Lindane)  
 R.T.: 3.609 min  
 Delta R.T.: -0.002 min  
 Response: 32209403  
 Conc: 8.35 ng/ml



#4 Heptachlor  
 R.T.: 0.000 min  
 Exp R.T. : 4.917 min  
 Response: 0  
 Conc: N.D.



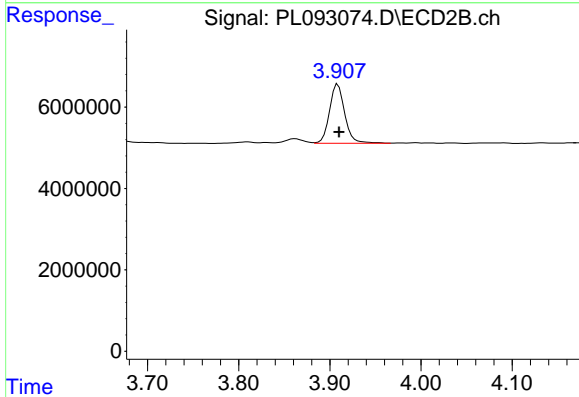
#4 Heptachlor  
 R.T.: 3.978 min  
 Delta R.T.: 0.028 min  
 Response: 68639  
 Conc: 0.02 ng/ml



#6 beta-BHC

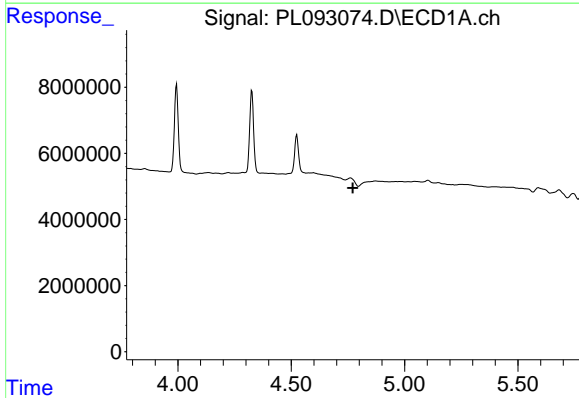
R.T.: 4.524 min  
 Delta R.T.: 0.000 min  
 Response: 13991027  
 Conc: 9.68 ng/ml

Instrument :  
 ECD\_L  
 ClientSampleId :  
 PEM



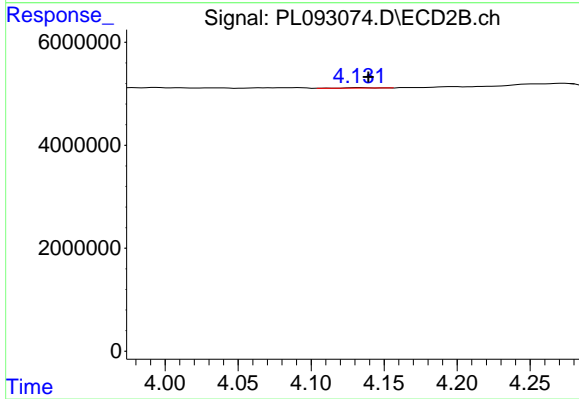
#6 beta-BHC

R.T.: 3.909 min  
 Delta R.T.: -0.001 min  
 Response: 16830348  
 Conc: 10.22 ng/ml



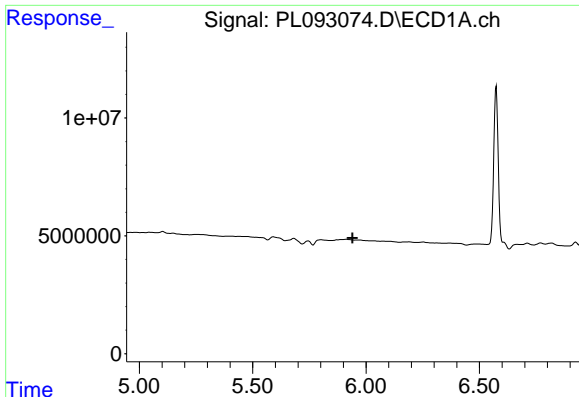
#7 delta-BHC

R.T.: 0.000 min  
 Exp R.T. : 4.772 min  
 Response: 0  
 Conc: N.D.



#7 delta-BHC

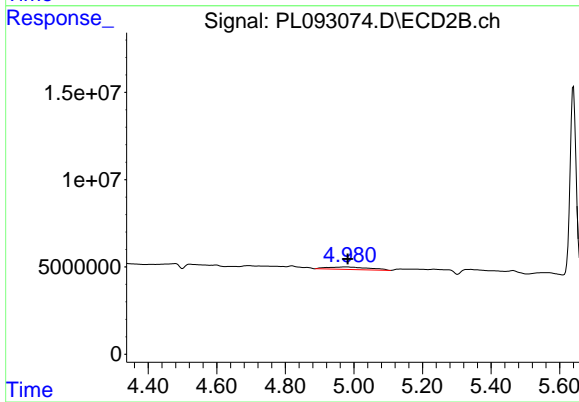
R.T.: 4.133 min  
 Delta R.T.: -0.006 min  
 Response: 102504  
 Conc: 0.03 ng/ml



#10 gamma-Chlordane

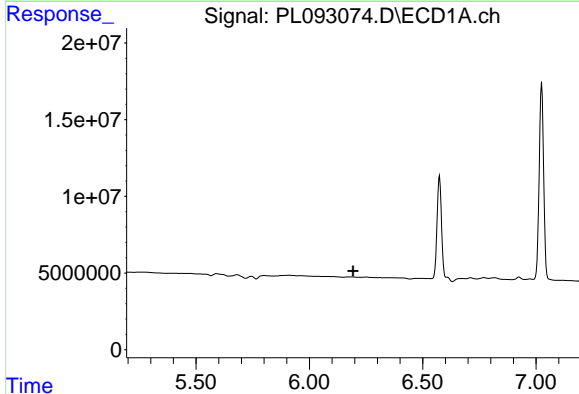
R.T.: 0.000 min  
 Exp R.T. : 5.941 min  
 Response: 0  
 Conc: N.D.

Instrument :  
 ECD\_L  
 ClientSampleId :  
 PEM



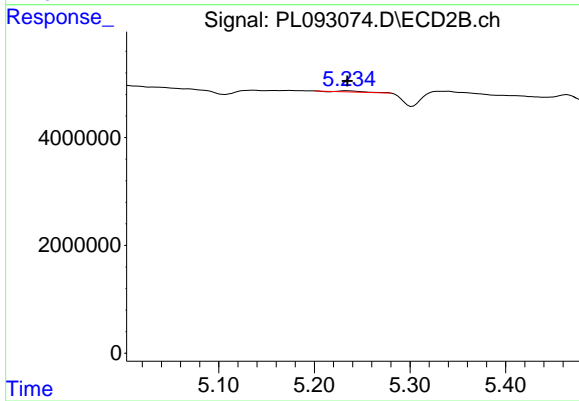
#10 gamma-Chlordane

R.T.: 4.975 min  
 Delta R.T.: -0.007 min  
 Response: 12250593  
 Conc: 3.64 ng/ml



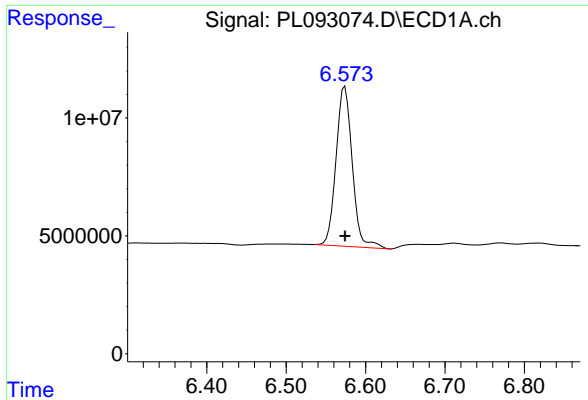
#12 4,4'-DDE

R.T.: 0.000 min  
 Exp R.T. : 6.193 min  
 Response: 0  
 Conc: N.D.



#12 4,4'-DDE

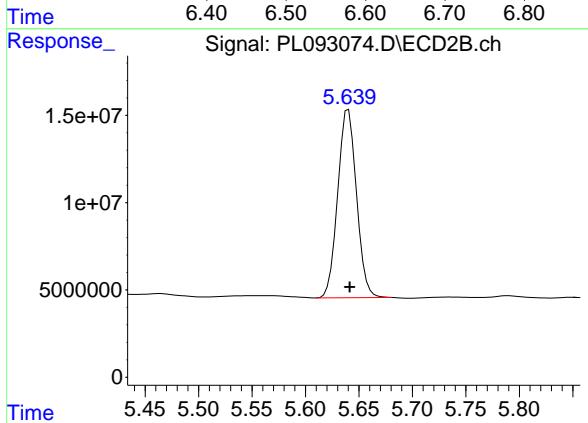
R.T.: 5.234 min  
 Delta R.T.: 0.000 min  
 Response: 239824  
 Conc: 0.07 ng/ml



#14 Endrin

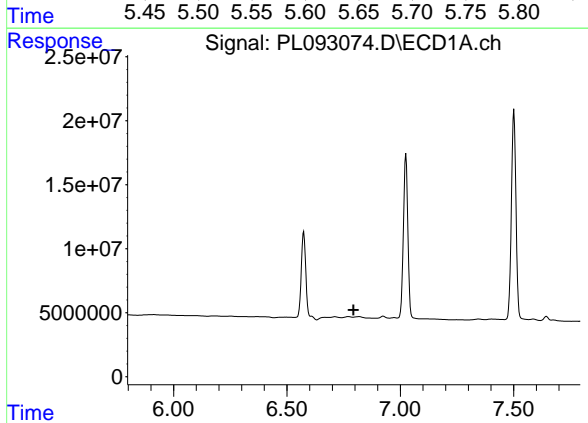
R.T.: 6.574 min  
 Delta R.T.: 0.000 min  
 Response: 96047500  
 Conc: 42.19 ng/ml

Instrument :  
 ECD\_L  
 ClientSampleId :  
 PEM



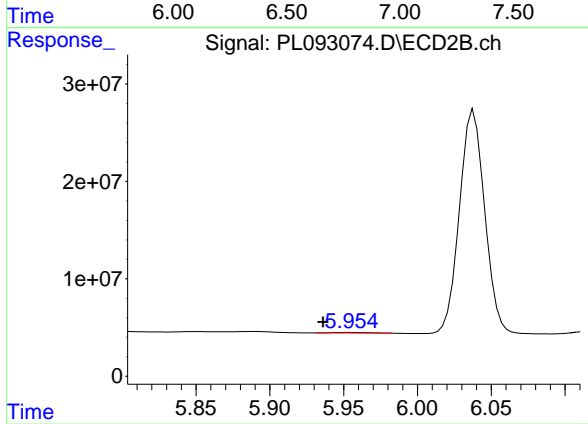
#14 Endrin

R.T.: 5.640 min  
 Delta R.T.: -0.001 min  
 Response: 131957895  
 Conc: 45.61 ng/ml



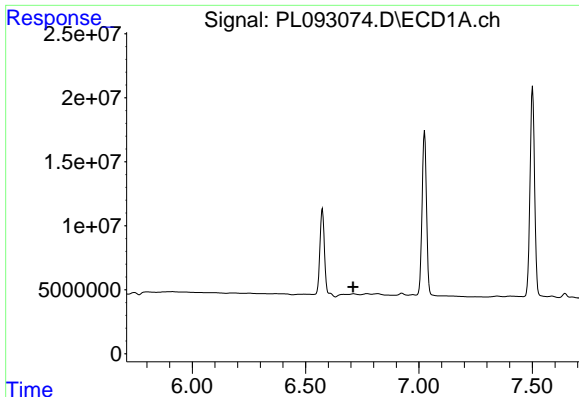
#15 Endosulfan II

R.T.: 0.000 min  
 Exp R.T. : 6.794 min  
 Response: 0  
 Conc: N.D.



#15 Endosulfan II

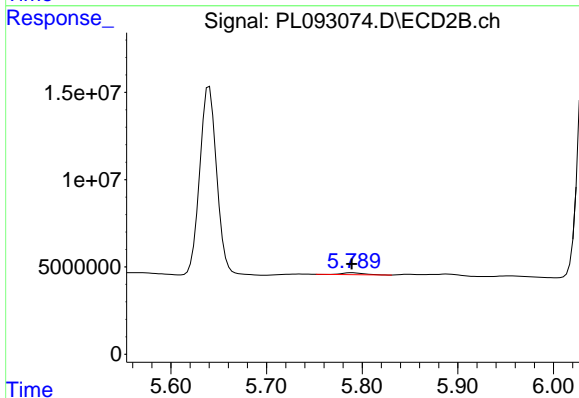
R.T.: 5.954 min  
 Delta R.T.: 0.018 min  
 Response: 781773  
 Conc: 0.28 ng/ml



#16 4,4'-DDD

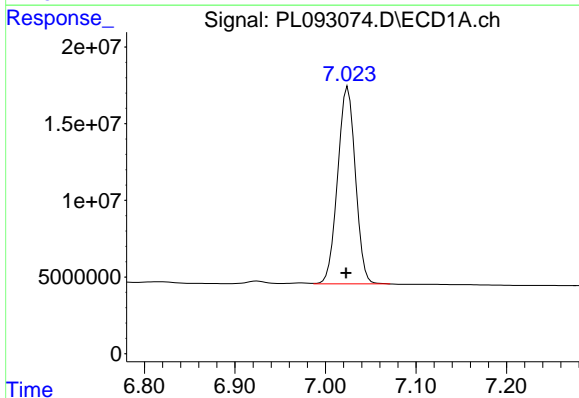
R.T.: 0.000 min  
 Exp R.T.: 6.710 min  
 Response: 0  
 Conc: N.D.

Instrument :  
 ECD\_L  
 ClientSampleId :  
 PEM



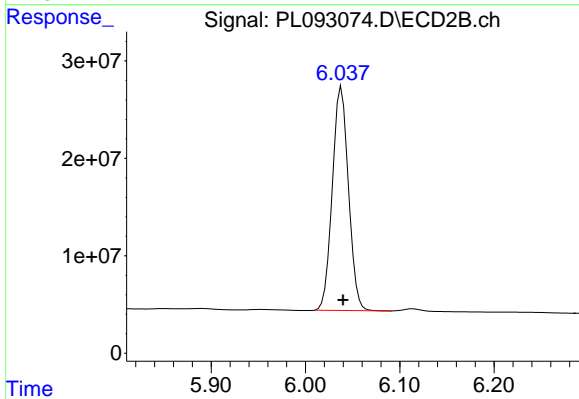
#16 4,4'-DDD

R.T.: 5.790 min  
 Delta R.T.: 0.000 min  
 Response: 1663122  
 Conc: 0.67 ng/ml



#17 4,4'-DDT

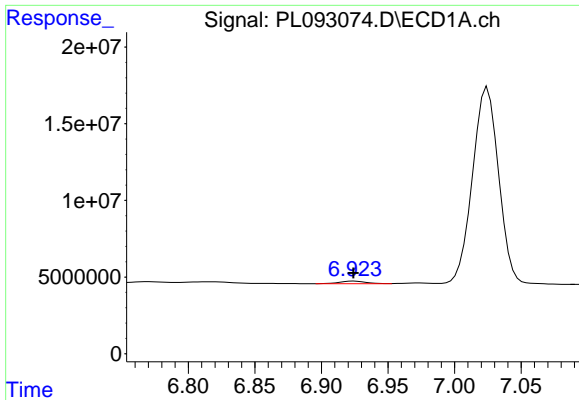
R.T.: 7.025 min  
 Delta R.T.: 0.002 min  
 Response: 174985906  
 Conc: 84.54 ng/ml



#17 4,4'-DDT

R.T.: 6.038 min  
 Delta R.T.: -0.002 min  
 Response: 273136071  
 Conc: 101.83 ng/ml

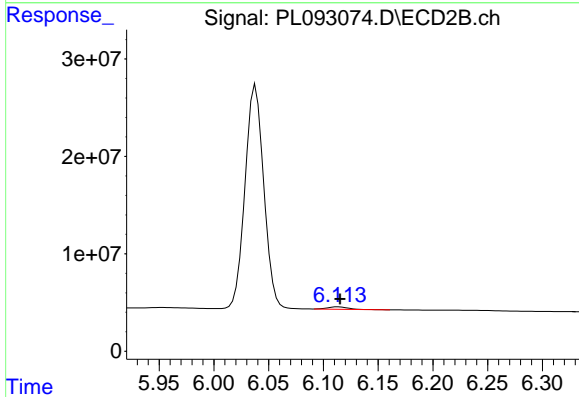




#18 Endrin aldehyde

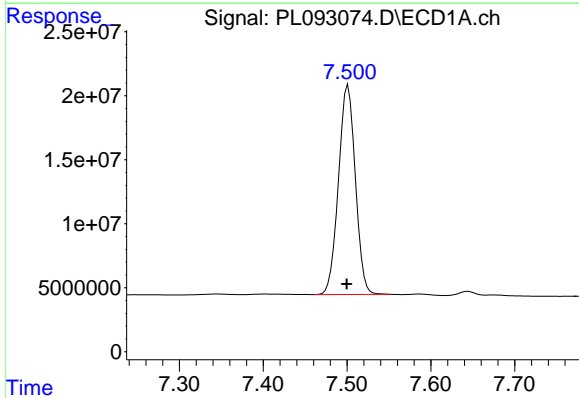
R.T.: 6.925 min  
 Delta R.T.: 0.000 min  
 Response: 2352531  
 Conc: 1.25 ng/ml

Instrument :  
 ECD\_L  
 ClientSampleId :  
 PEM



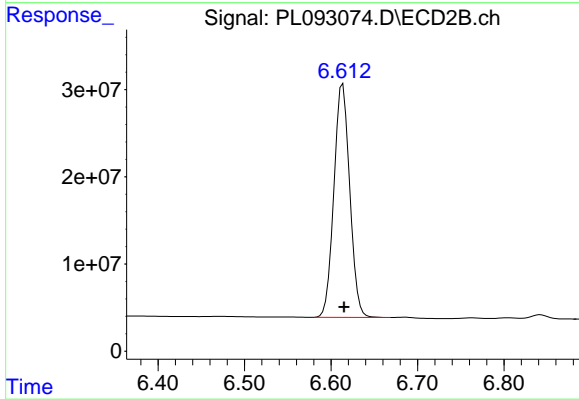
#18 Endrin aldehyde

R.T.: 6.114 min  
 Delta R.T.: -0.001 min  
 Response: 3097443  
 Conc: 1.34 ng/ml



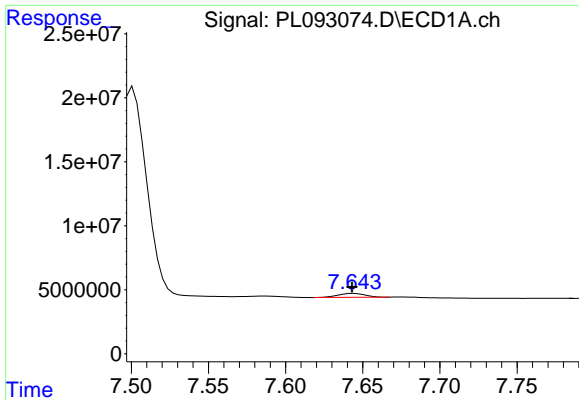
#20 Methoxychlor

R.T.: 7.501 min  
 Delta R.T.: 0.002 min  
 Response: 229092218  
 Conc: 200.96 ng/ml



#20 Methoxychlor

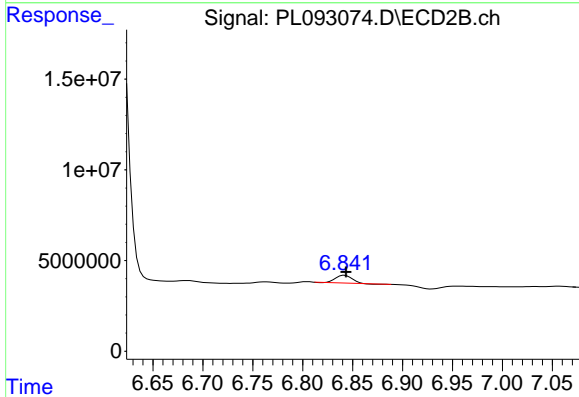
R.T.: 6.614 min  
 Delta R.T.: -0.001 min  
 Response: 338416805  
 Conc: 236.98 ng/ml



#21 Endrin ketone

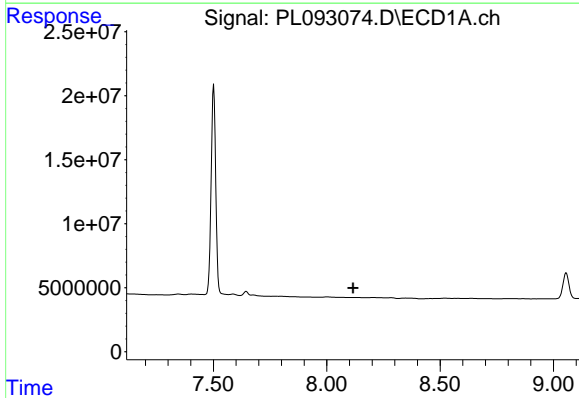
R.T.: 7.644 min  
 Delta R.T.: 0.001 min  
 Response: 3682725  
 Conc: 1.52 ng/ml

Instrument :  
 ECD\_L  
 ClientSampleId :  
 PEM



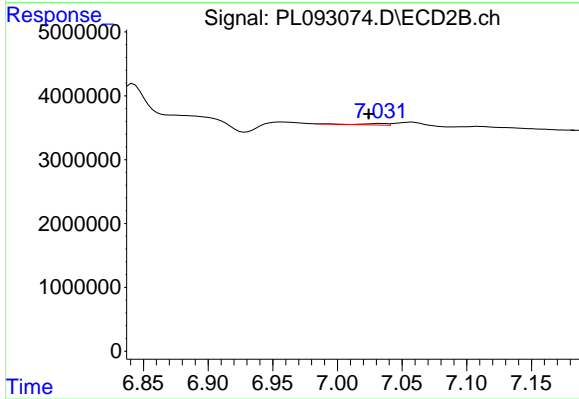
#21 Endrin ketone

R.T.: 6.842 min  
 Delta R.T.: -0.001 min  
 Response: 4521601  
 Conc: 1.47 ng/ml



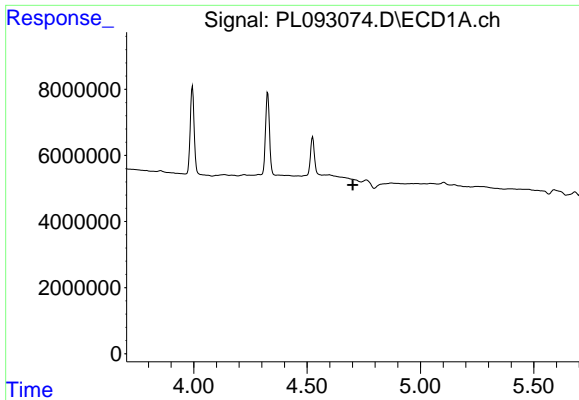
#22 Mirex

R.T.: 0.000 min  
 Exp R.T. : 8.116 min  
 Response: 0  
 Conc: N.D.



#22 Mirex

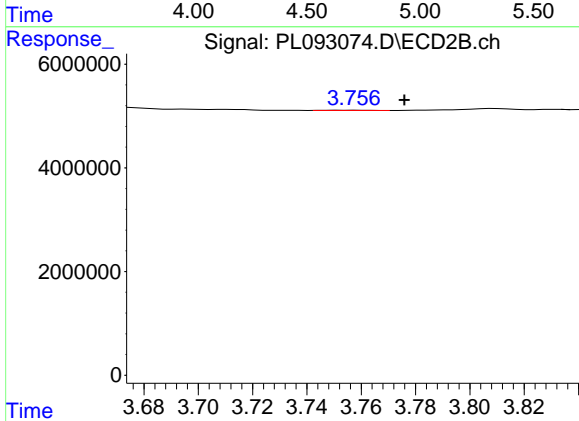
R.T.: 7.033 min  
 Delta R.T.: 0.009 min  
 Response: 321370  
 Conc: 0.12 ng/ml



#23 Chlordane-1

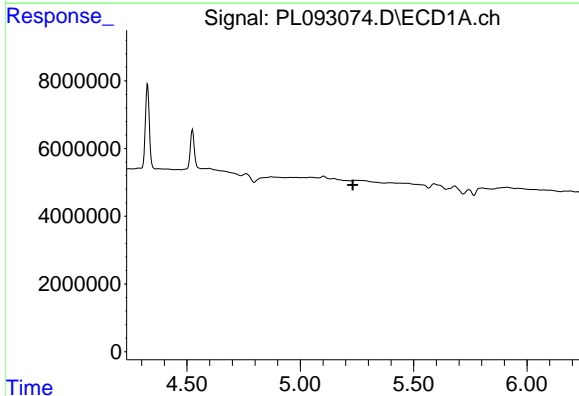
R.T.: 0.000 min  
 Exp R.T.: 4.702 min  
 Response: 0  
 Conc: N.D.

Instrument :  
 ECD\_L  
 ClientSampleId :  
 PEM



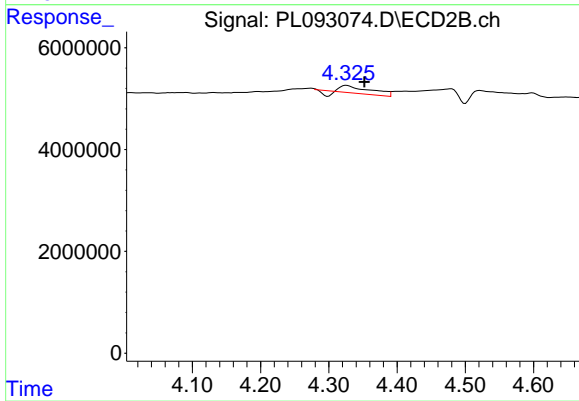
#23 Chlordane-1

R.T.: 3.758 min  
 Delta R.T.: -0.018 min  
 Response: 33210  
 Conc: 0.31 ng/ml



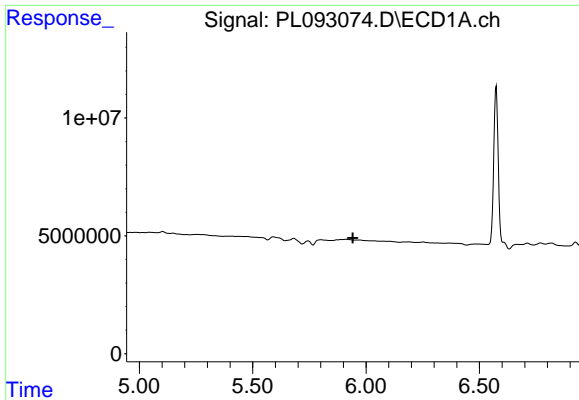
#24 Chlordane-2

R.T.: 0.000 min  
 Exp R.T.: 5.231 min  
 Response: 0  
 Conc: N.D.



#24 Chlordane-2

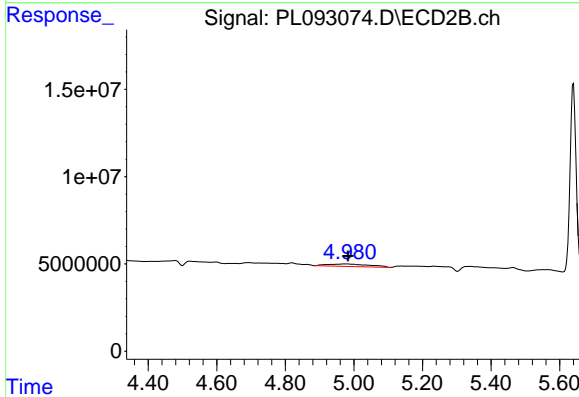
R.T.: 4.326 min  
 Delta R.T.: -0.026 min  
 Response: 3876549  
 Conc: 31.30 ng/ml



#25 Chlordane-3

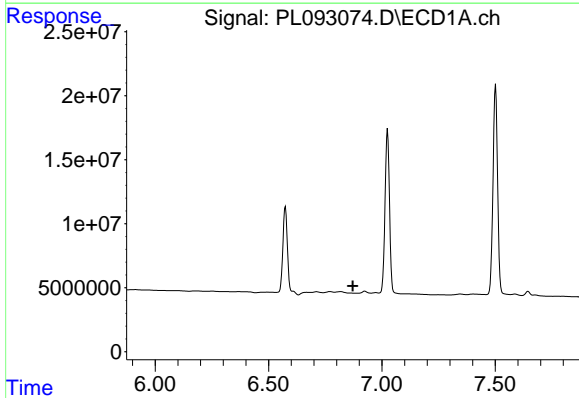
R.T.: 0.000 min  
 Exp R.T.: 5.941 min  
 Response: 0  
 Conc: N.D.

Instrument :  
 ECD\_L  
 ClientSampleId :  
 PEM



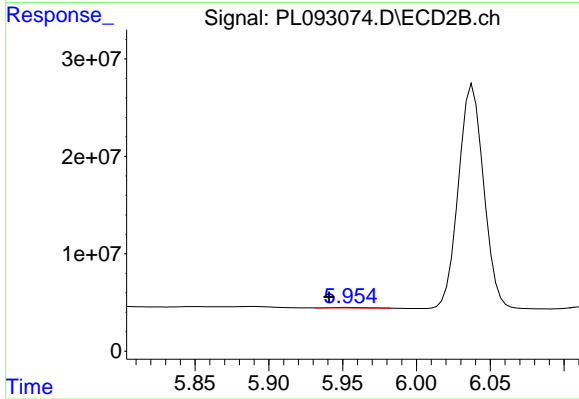
#25 Chlordane-3

R.T.: 4.975 min  
 Delta R.T.: -0.007 min  
 Response: 12250593  
 Conc: 33.78 ng/ml



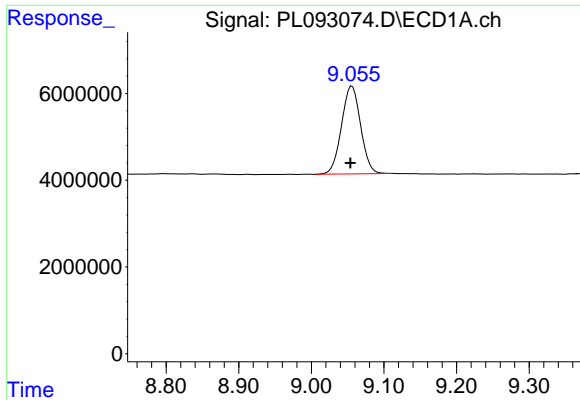
#27 Chlordane-5

R.T.: 0.000 min  
 Exp R.T.: 6.872 min  
 Response: 0  
 Conc: N.D.



#27 Chlordane-5

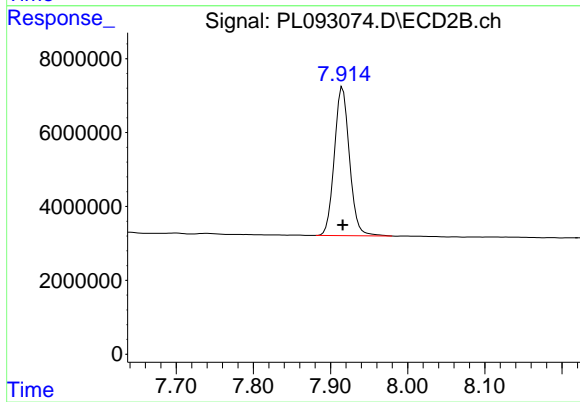
R.T.: 5.954 min  
 Delta R.T.: 0.013 min  
 Response: 781773  
 Conc: 6.17 ng/ml



#28 Decachlorobiphenyl

R.T.: 9.056 min  
Delta R.T.: 0.002 min  
Response: 37007379  
Conc: 19.23 ng/ml

Instrument :  
ECD\_L  
ClientSampleId :  
PEM



#28 Decachlorobiphenyl

R.T.: 7.916 min  
Delta R.T.: 0.000 min  
Response: 54919338  
Conc: 20.12 ng/ml