

Data Path : Z:\pestpcbsrv\HPCHEM1\ECD\_L\Data\PL111524\  
 Data File : PL093082.D  
 Signal(s) : Signal #1: ECD1A.ch Signal #2: ECD2B.ch  
 Acq On : 15 Nov 2024 15:35  
 Operator : AR\AJ  
 Sample : P4851-01 5X  
 Misc :  
 ALS Vial : 11 Sample Multiplier: 1

Instrument :  
 ECD\_L  
 ClientSampleId :  
 OK-02-11142024

Integration File signal 1: autoint1.e  
 Integration File signal 2: autoint2.e  
 Quant Time: Nov 15 21:47:46 2024  
 Quant Method : Z:\pestpcbsrv\HPCHEM1\ECD\_L\methods\PL102824.M  
 Quant Title : GC Extractables  
 QLast Update : Mon Oct 28 18:58:23 2024  
 Response via : Initial Calibration  
 Integrator: ChemStation

Volume Inj. : 1 µl  
 Signal #1 Phase : ZB-MR2 Signal #2 Phase: ZB-MR1  
 Signal #1 Info : 30M x 0.32mm x0.2 Signal #2 Info : 30M x 0.32mm x0.5µm

Compound	RT#1	RT#2	Resp#1	Resp#2	ng/ml	ng/ml
System Monitoring Compounds						
1) SA Tetrachlo...	3.538	2.776	6736294	7111359	2.749	2.613
28) SA Decachlor...	9.057	7.916	4076118	6901835	2.118	2.529
Target Compounds						
2) A alpha-BHC	0.000	3.299f	0	53085	N.D.	0.013 #
3) MA gamma-BHC...	0.000	3.601	0	6943	N.D.	0.002 #
4) MA Heptachlor	0.000	3.942	0	181815	N.D.	0.048 #
5) MB Aldrin	0.000	4.237	0	200003	N.D.	0.055 #
6) B beta-BHC	0.000	3.920	0	547115	N.D.	0.332 #
7) B delta-BHC	0.000	4.124	0	66326	N.D.	0.017 #
8) B Heptachlo...	0.000	4.729	0	1719597	N.D.	0.515 #
9) A Endosulfan I	0.000	5.123f	0	372360	N.D.	0.122 #
10) B gamma-Chl...	0.000	4.982	0	7465926	N.D.	2.221 #
12) B 4,4'-DDE	0.000	5.233	0	176005	N.D.	0.055 #
14) MA Endrin	0.000	5.630	0	1583027	N.D.	0.547 #
15) B Endosulfa...	6.816f	5.958f	547181	417249	0.230	0.147 #
17) MA 4,4'-DDT	0.000	6.036	0	1112570	N.D.	0.415 #
22) Mirex	0.000	6.996f	0	112670	N.D.	0.043 #
23) Chlordane-1	0.000	3.769	0	577162	N.D.	5.437 #
24) Chlordane-2	0.000	4.332f	0	612004	N.D.	4.941 #
25) Chlordane-3	0.000	4.982	0	7465926	N.D.	20.585 #
27) Chlordane-5	0.000	5.958	0	417249	N.D.	3.290 #

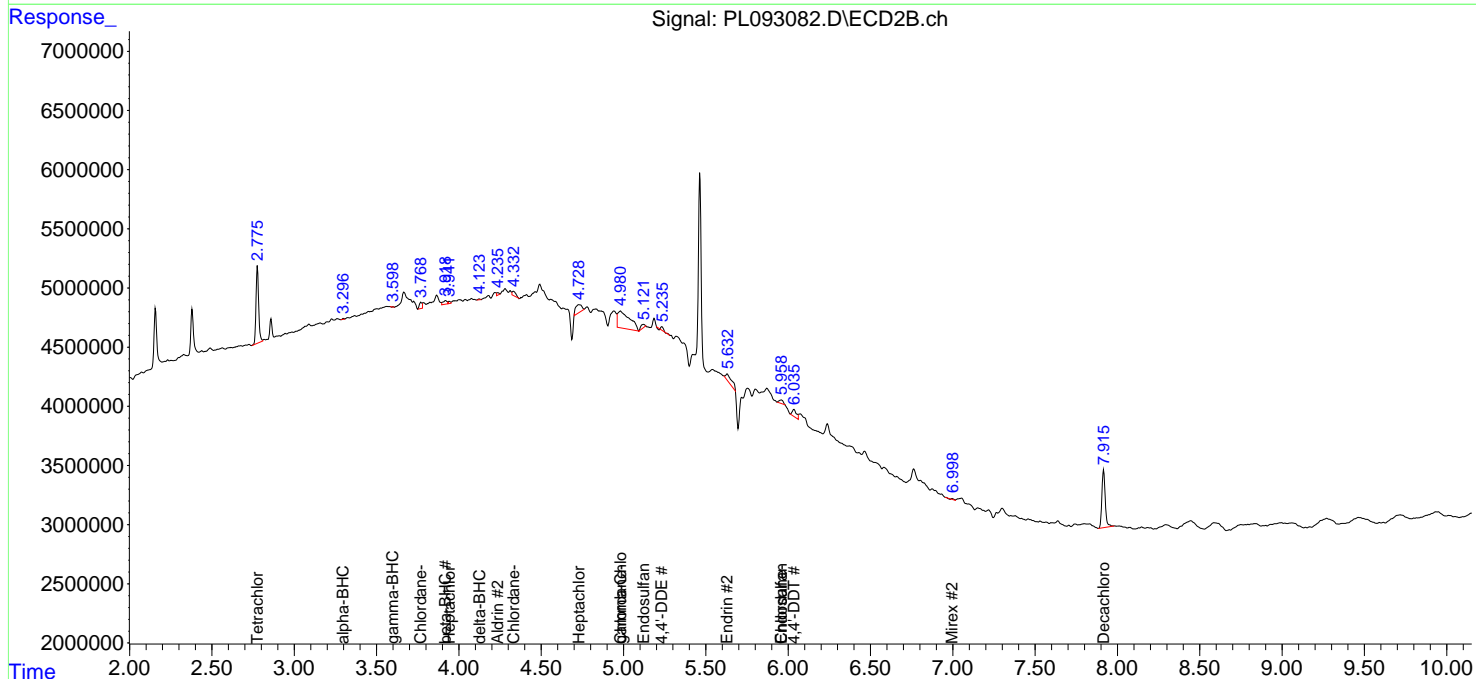
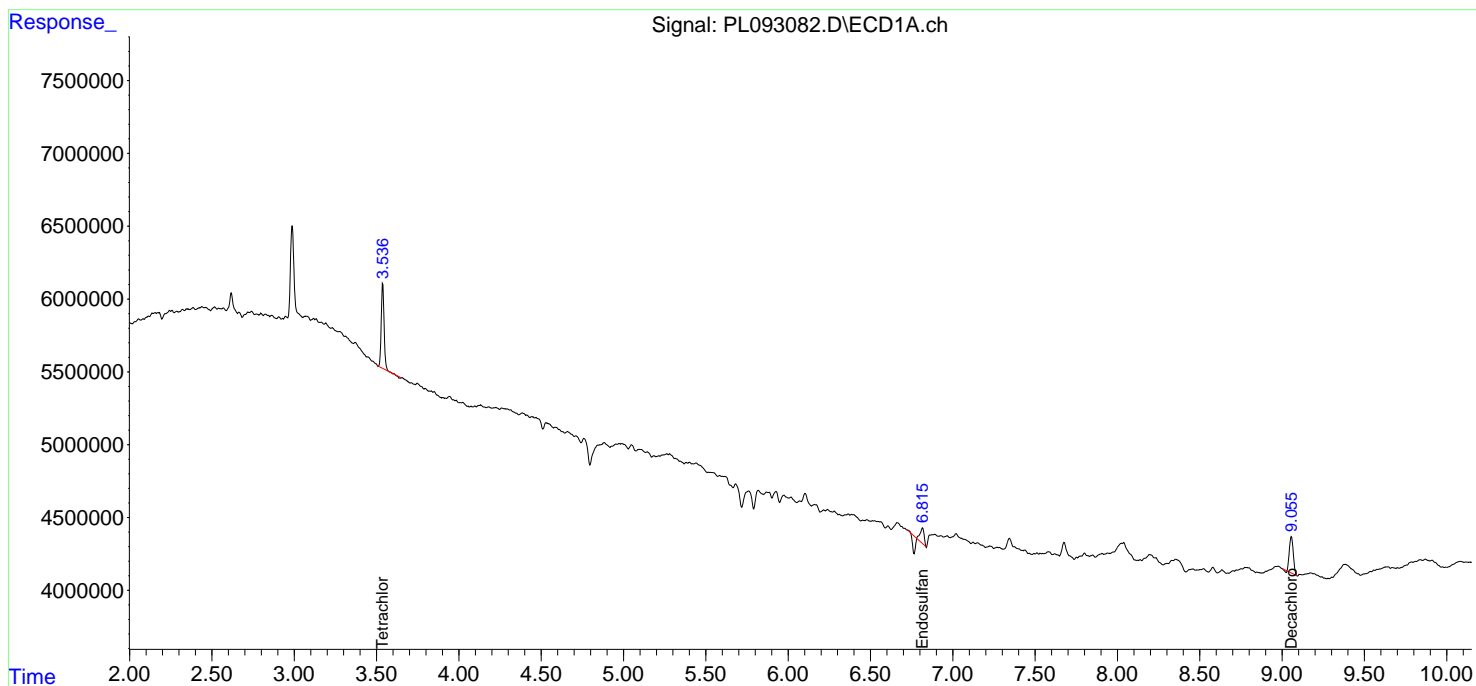
(f)=RT Delta > 1/2 Window (#)=Amounts differ by > 25% (m)=manual int.

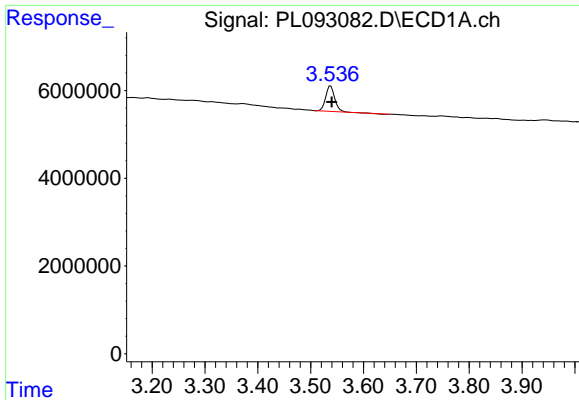
Data Path : Z:\pestpcbsrv\HPCHEM1\ECD\_L\Data\PL111524\  
 Data File : PL093082.D  
 Signal(s) : Signal #1: ECD1A.ch Signal #2: ECD2B.ch  
 Acq On : 15 Nov 2024 15:35  
 Operator : AR\AJ  
 Sample : P4851-01 5X  
 Misc :  
 ALS Vial : 11 Sample Multiplier: 1

Instrument :  
 ECD\_L  
 ClientSampleId :  
 OK-02-11142024

Integration File signal 1: autoint1.e  
 Integration File signal 2: autoint2.e  
 Quant Time: Nov 15 21:47:46 2024  
 Quant Method : Z:\pestpcbsrv\HPCHEM1\ECD\_L\methods\PL102824.M  
 Quant Title : GC Extractables  
 QLast Update : Mon Oct 28 18:58:23 2024  
 Response via : Initial Calibration  
 Integrator: ChemStation

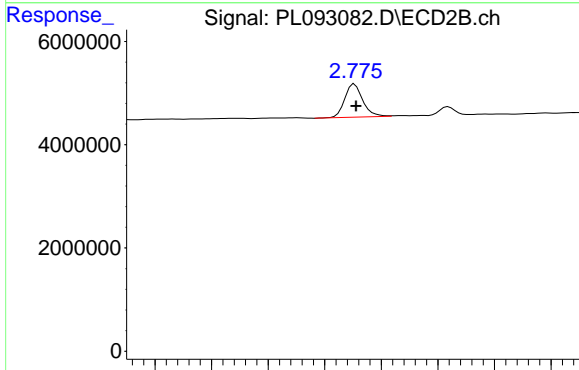
Volume Inj. : 1 µl  
 Signal #1 Phase : ZB-MR2 Signal #2 Phase: ZB-MR1  
 Signal #1 Info : 30M x 0.32mm x0.2 Signal #2 Info : 30M x 0.32mm x0.5µm



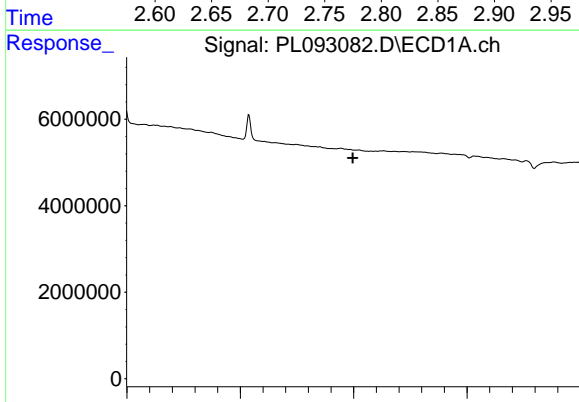


#1 Tetrachloro-m-xylene  
 R.T.: 3.538 min  
 Delta R.T.: -0.002 min  
 Response: 6736294  
 Conc: 2.75 ng/ml

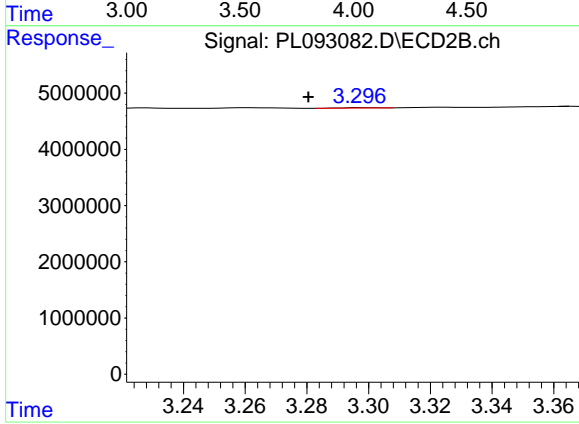
Instrument :  
 ECD\_L  
 ClientSampleId :  
 OK-02-11142024



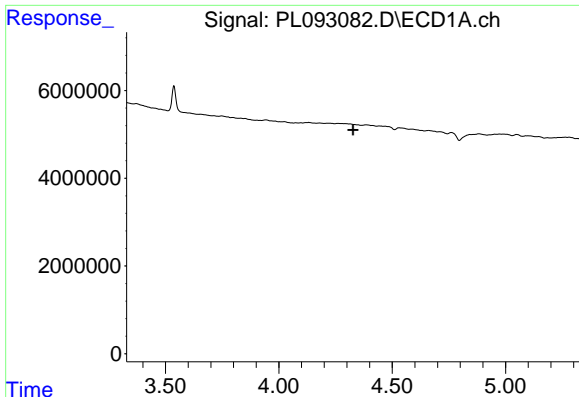
#1 Tetrachloro-m-xylene  
 R.T.: 2.776 min  
 Delta R.T.: -0.001 min  
 Response: 7111359  
 Conc: 2.61 ng/ml



#2 alpha-BHC  
 R.T.: 0.000 min  
 Exp R.T. : 3.996 min  
 Response: 0  
 Conc: N.D.



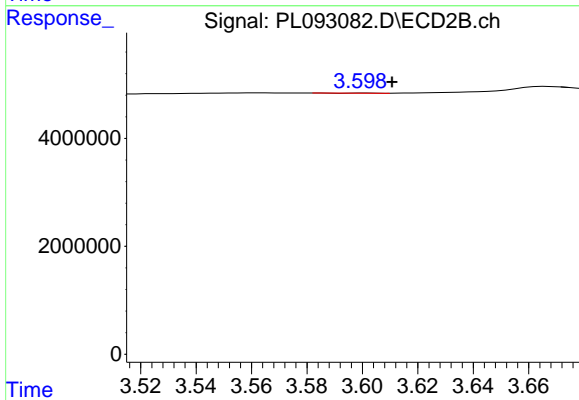
#2 alpha-BHC  
 R.T.: 3.299 min  
 Delta R.T.: 0.018 min  
 Response: 53085  
 Conc: 0.01 ng/ml



#3 gamma-BHC (Lindane)

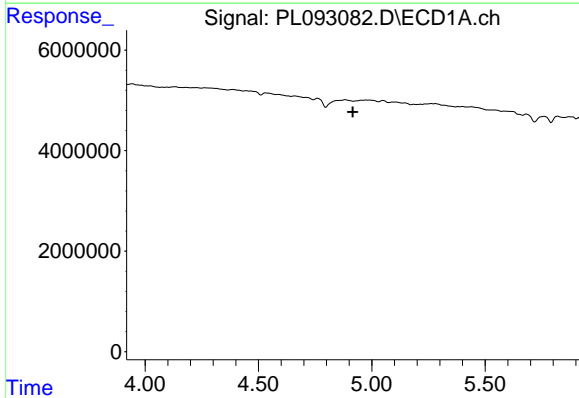
R.T.: 0.000 min  
 Exp R.T.: 4.328 min  
 Response: 0  
 Conc: N.D.

Instrument :  
 ECD\_L  
 ClientSampleId :  
 OK-02-11142024



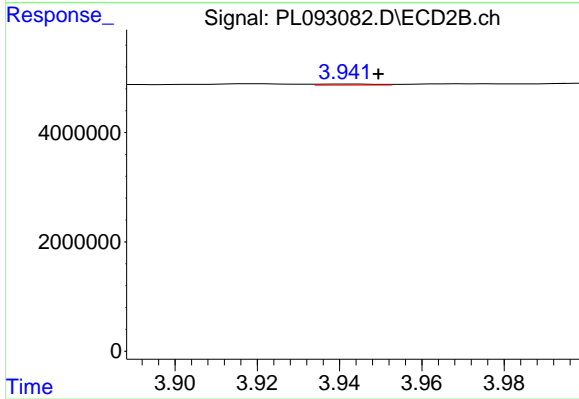
#3 gamma-BHC (Lindane)

R.T.: 3.601 min  
 Delta R.T.: -0.010 min  
 Response: 6943  
 Conc: 0.00 ng/ml



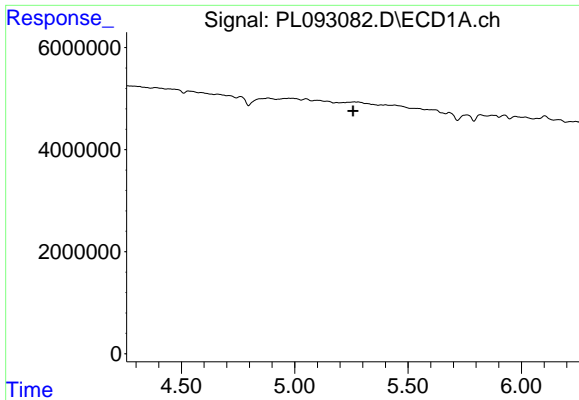
#4 Heptachlor

R.T.: 0.000 min  
 Exp R.T.: 4.917 min  
 Response: 0  
 Conc: N.D.



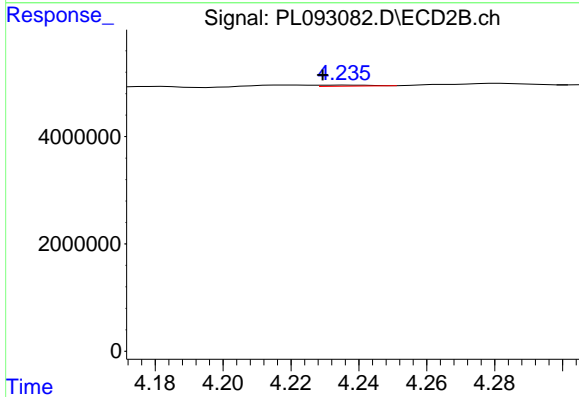
#4 Heptachlor

R.T.: 3.942 min  
 Delta R.T.: -0.007 min  
 Response: 181815  
 Conc: 0.05 ng/ml

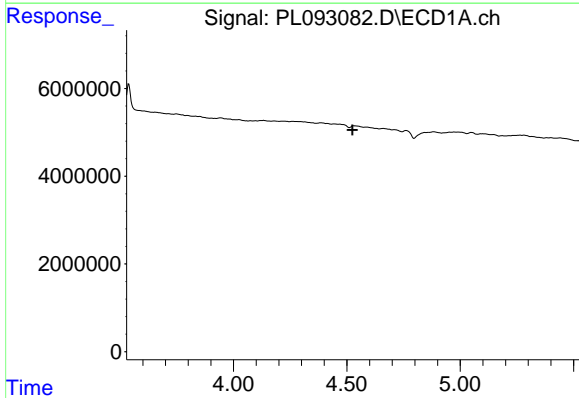


#5 Aldrin  
 R.T.: 0.000 min  
 Exp R.T.: 5.258 min  
 Response: 0  
 Conc: N.D.

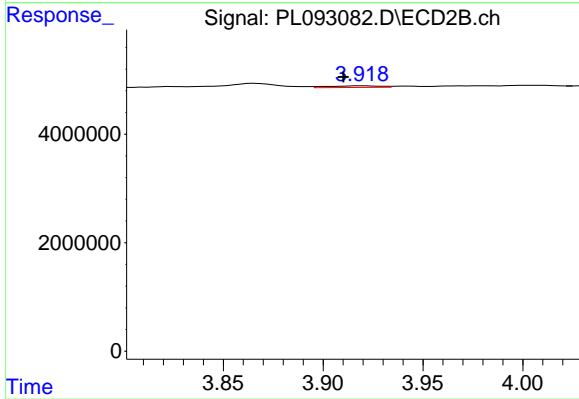
Instrument :  
 ECD\_L  
 ClientSampleId :  
 OK-02-11142024



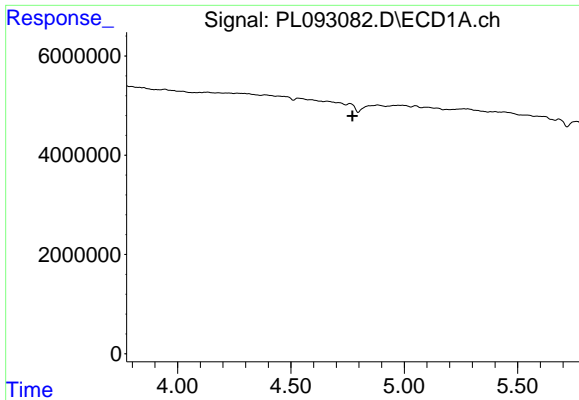
#5 Aldrin  
 R.T.: 4.237 min  
 Delta R.T.: 0.008 min  
 Response: 200003  
 Conc: 0.05 ng/ml



#6 beta-BHC  
 R.T.: 0.000 min  
 Exp R.T.: 4.525 min  
 Response: 0  
 Conc: N.D.



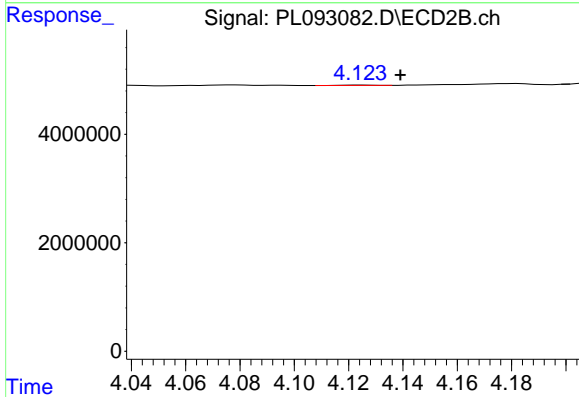
#6 beta-BHC  
 R.T.: 3.920 min  
 Delta R.T.: 0.009 min  
 Response: 547115  
 Conc: 0.33 ng/ml



#7 delta-BHC

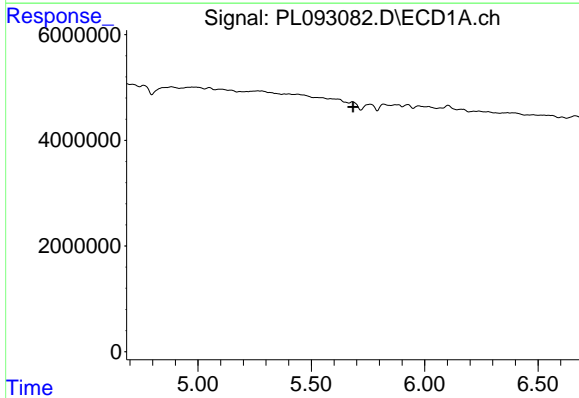
R.T.: 0.000 min  
 Exp R.T.: 4.772 min  
 Response: 0  
 Conc: N.D.

Instrument :  
 ECD\_L  
 ClientSampleId :  
 OK-02-11142024



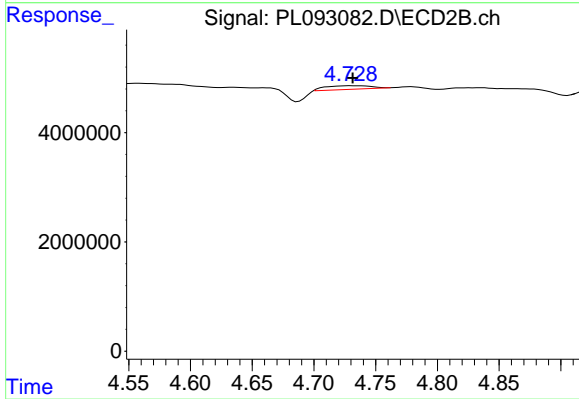
#7 delta-BHC

R.T.: 4.124 min  
 Delta R.T.: -0.015 min  
 Response: 66326  
 Conc: 0.02 ng/ml



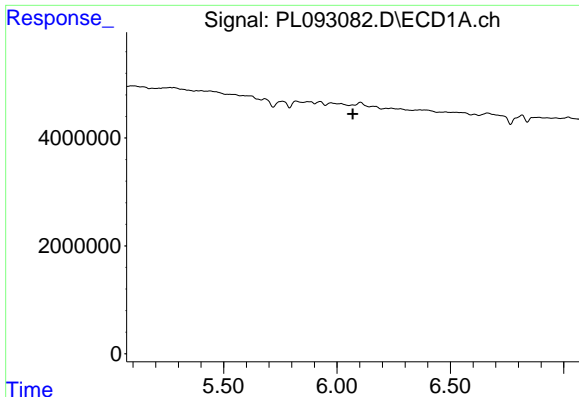
#8 Heptachlor epoxide

R.T.: 0.000 min  
 Exp R.T.: 5.684 min  
 Response: 0  
 Conc: N.D.



#8 Heptachlor epoxide

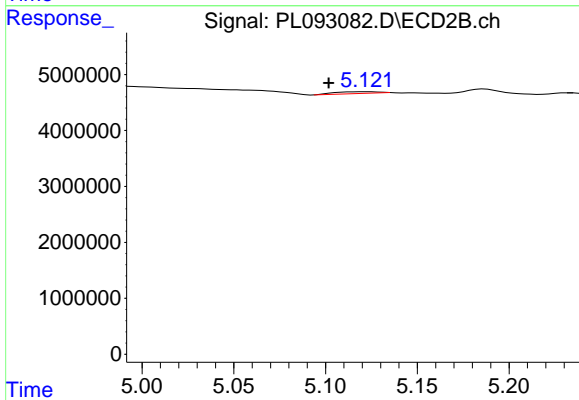
R.T.: 4.729 min  
 Delta R.T.: -0.003 min  
 Response: 1719597  
 Conc: 0.51 ng/ml



#9 Endosulfan I

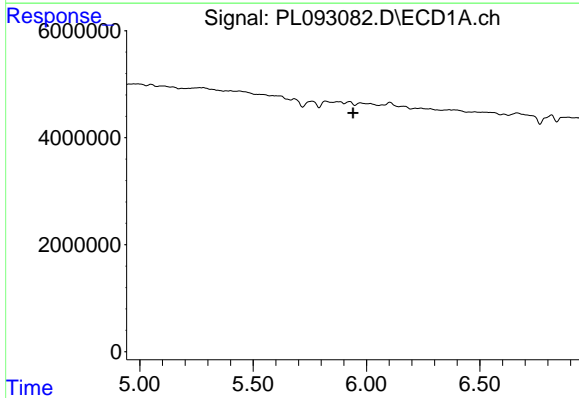
R.T.: 0.000 min  
 Exp R.T. : 6.070 min  
 Response: 0  
 Conc: N.D.

Instrument :  
 ECD\_L  
 ClientSampleId :  
 OK-02-11142024



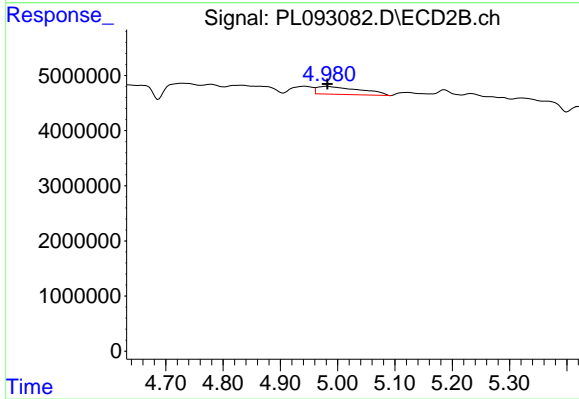
#9 Endosulfan I

R.T.: 5.123 min  
 Delta R.T.: 0.021 min  
 Response: 372360  
 Conc: 0.12 ng/ml



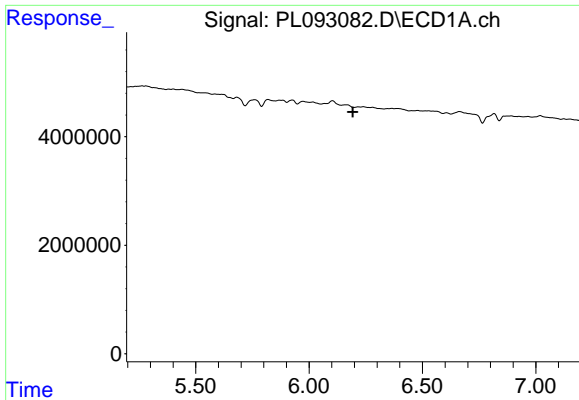
#10 gamma-Chlordane

R.T.: 0.000 min  
 Exp R.T. : 5.941 min  
 Response: 0  
 Conc: N.D.



#10 gamma-Chlordane

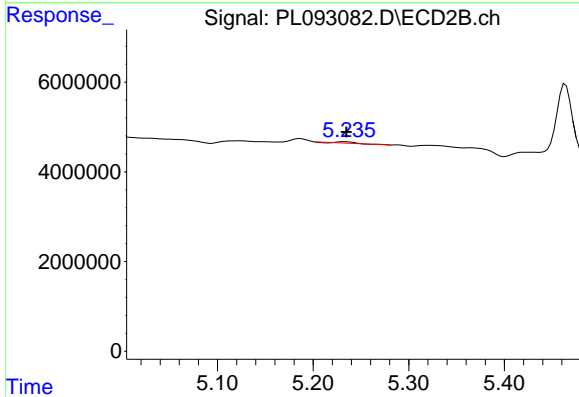
R.T.: 4.982 min  
 Delta R.T.: 0.000 min  
 Response: 7465926  
 Conc: 2.22 ng/ml



#12 4,4'-DDE

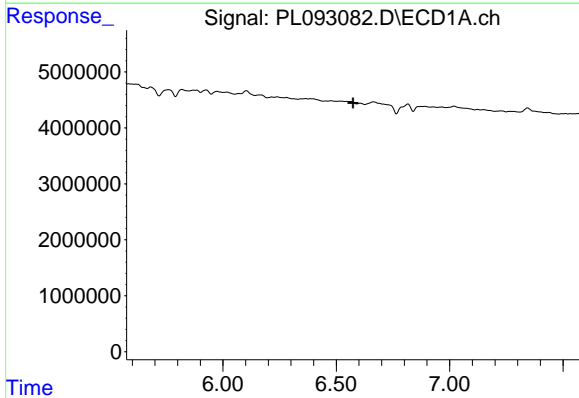
R.T.: 0.000 min  
 Exp R.T.: 6.193 min  
 Response: 0  
 Conc: N.D.

Instrument :  
 ECD\_L  
 ClientSampleId :  
 OK-02-11142024



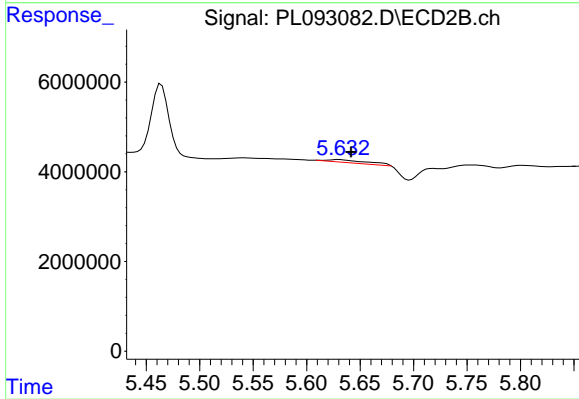
#12 4,4'-DDE

R.T.: 5.233 min  
 Delta R.T.: -0.002 min  
 Response: 176005  
 Conc: 0.05 ng/ml



#14 Endrin

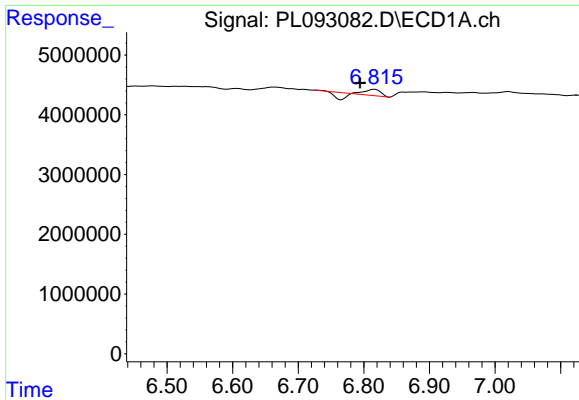
R.T.: 0.000 min  
 Exp R.T.: 6.574 min  
 Response: 0  
 Conc: N.D.



#14 Endrin

R.T.: 5.630 min  
 Delta R.T.: -0.012 min  
 Response: 1583027  
 Conc: 0.55 ng/ml

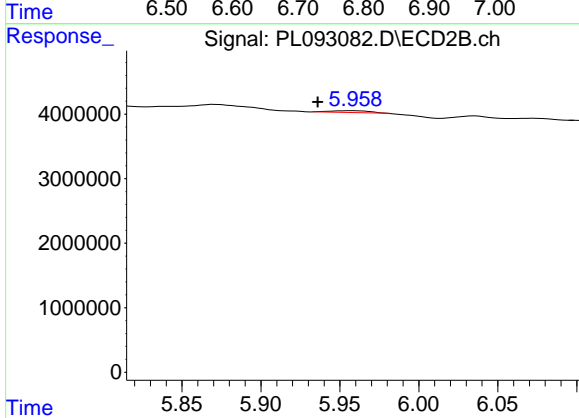




#15 Endosulfan II

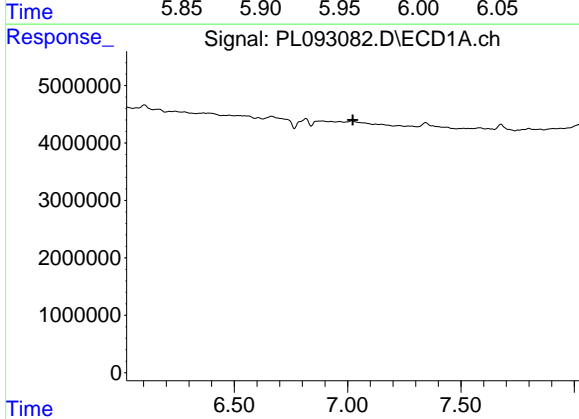
R.T.: 6.816 min  
 Delta R.T.: 0.022 min  
 Response: 547181  
 Conc: 0.23 ng/ml

Instrument :  
 ECD\_L  
 ClientSampleId :  
 OK-02-11142024



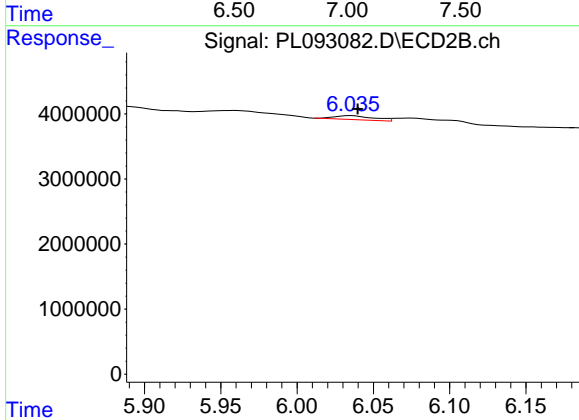
#15 Endosulfan II

R.T.: 5.958 min  
 Delta R.T.: 0.022 min  
 Response: 417249  
 Conc: 0.15 ng/ml



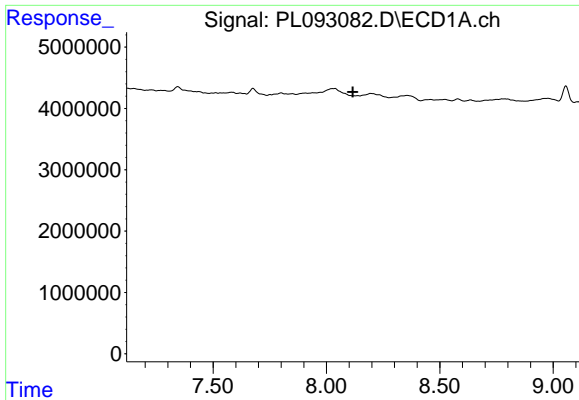
#17 4,4'-DDT

R.T.: 0.000 min  
 Exp R.T. : 7.023 min  
 Response: 0  
 Conc: N.D.



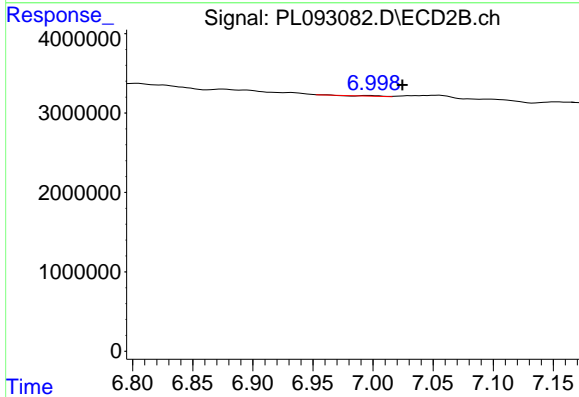
#17 4,4'-DDT

R.T.: 6.036 min  
 Delta R.T.: -0.004 min  
 Response: 1112570  
 Conc: 0.41 ng/ml

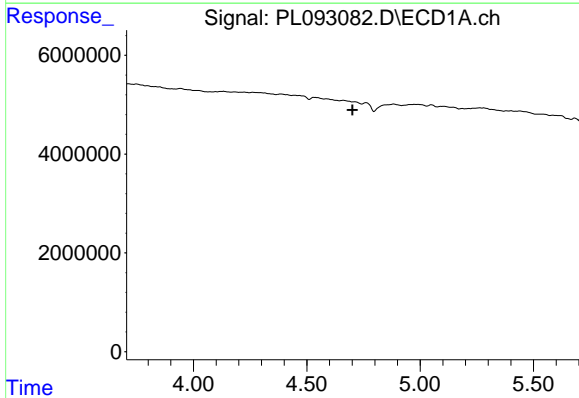


#22 Mirex  
 R.T.: 0.000 min  
 Exp R.T.: 8.116 min  
 Response: 0  
 Conc: N.D.

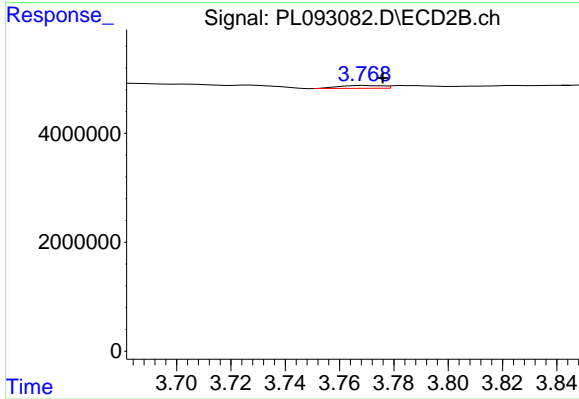
Instrument :  
 ECD\_L  
 ClientSampleId :  
 OK-02-11142024



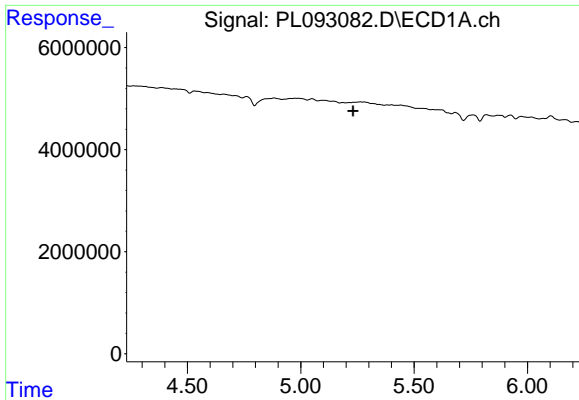
#22 Mirex  
 R.T.: 6.996 min  
 Delta R.T.: -0.028 min  
 Response: 112670  
 Conc: 0.04 ng/ml



#23 Chlordane-1  
 R.T.: 0.000 min  
 Exp R.T.: 4.702 min  
 Response: 0  
 Conc: N.D.



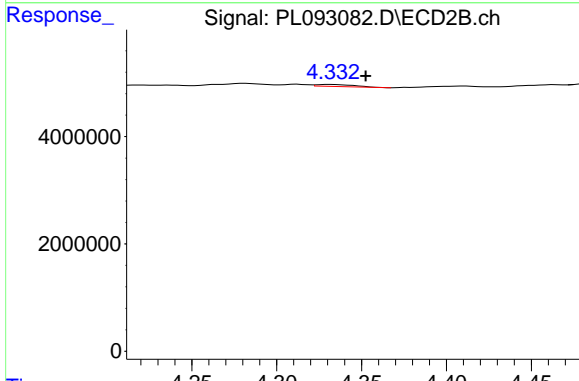
#23 Chlordane-1  
 R.T.: 3.769 min  
 Delta R.T.: -0.007 min  
 Response: 577162  
 Conc: 5.44 ng/ml



#24 Chlordane-2

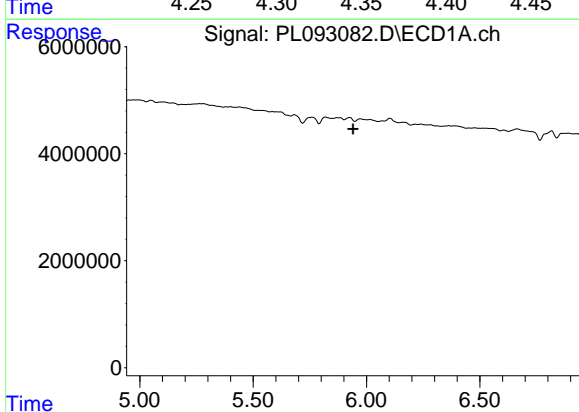
R.T.: 0.000 min  
 Exp R.T.: 5.231 min  
 Response: 0  
 Conc: N.D.

Instrument :  
 ECD\_L  
 ClientSampleId :  
 OK-02-11142024



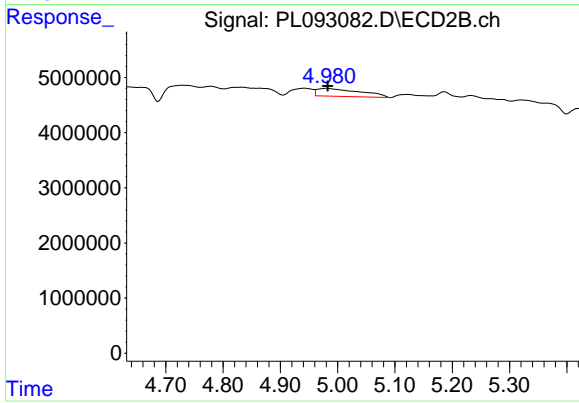
#24 Chlordane-2

R.T.: 4.332 min  
 Delta R.T.: -0.021 min  
 Response: 612004  
 Conc: 4.94 ng/ml



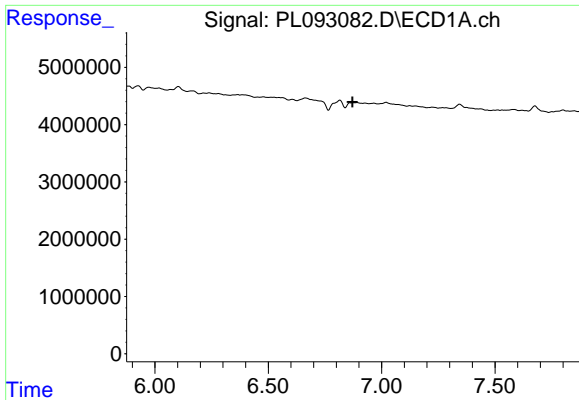
#25 Chlordane-3

R.T.: 0.000 min  
 Exp R.T.: 5.941 min  
 Response: 0  
 Conc: N.D.



#25 Chlordane-3

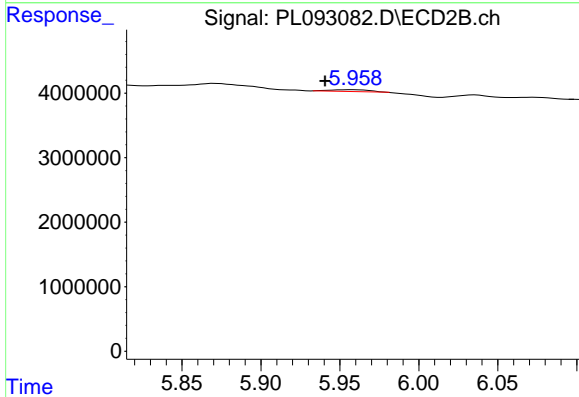
R.T.: 4.982 min  
 Delta R.T.: 0.000 min  
 Response: 7465926  
 Conc: 20.59 ng/ml



#27 Chlordane-5

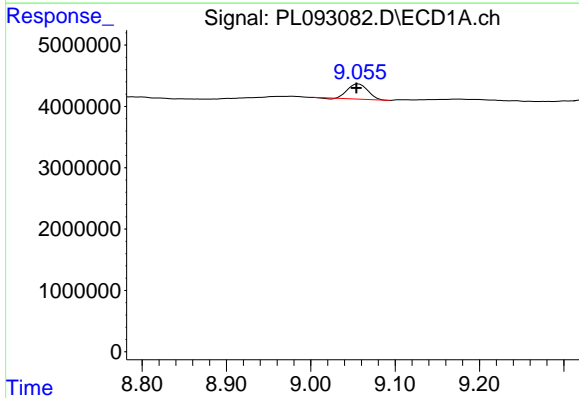
R.T.: 0.000 min  
 Exp R.T.: 6.872 min  
 Response: 0  
 Conc: N.D.

Instrument : ECD\_L  
 ClientSampleId : OK-02-11142024



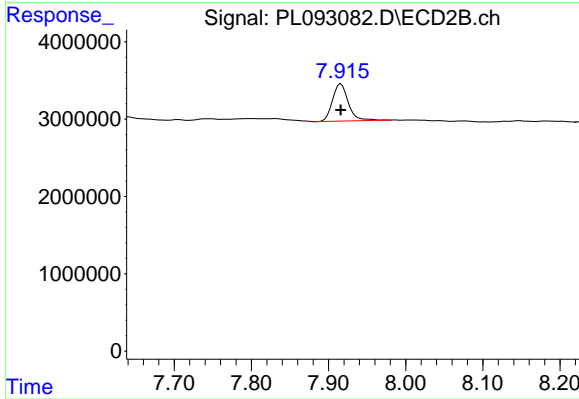
#27 Chlordane-5

R.T.: 5.958 min  
 Delta R.T.: 0.017 min  
 Response: 417249  
 Conc: 3.29 ng/ml



#28 Decachlorobiphenyl

R.T.: 9.057 min  
 Delta R.T.: 0.003 min  
 Response: 4076118  
 Conc: 2.12 ng/ml



#28 Decachlorobiphenyl

R.T.: 7.916 min  
 Delta R.T.: 0.000 min  
 Response: 6901835  
 Conc: 2.53 ng/ml