

Data Path : Z:\pestpcbsrv\HPCHEM1\ECD_L\Data\PL111718\
 Data File : PL042226.D
 Signal(s) : Signal #1: ECD1A.ch Signal #2: ECD2B.ch
 Acq On : 15 Nov 2018 09:35
 Operator : AJ\SJ
 Sample : PEM
 Misc :
 ALS Vial : 3 Sample Multiplier: 1

Instrument :
 ECD_L
 ClientSampleId :

Integration File signal 1: autoint1.e
 Integration File signal 2: autoint2.e
 Quant Time: Nov 15 11:21:52 2018
 Quant Method : Z:\pestpcbsrv\HPCHEM1\ECD_L\methods\Mirex-PL111718.M
 Quant Title : GC Extractables
 QLast Update : Thu Nov 15 11:21:10 2018
 Response via : Initial Calibration
 Integrator: ChemStation

Volume Inj. : 2 µl
 Signal #1 Phase : ZB-MR2 Signal #2 Phase: ZB-MR1
 Signal #1 Info : 30M x 0.32mm x0.2 Signal #2 Info : 30M x 0.32mm x 0.50µm

Compound	RT#1	RT#2	Resp#1	Resp#2	ng/ml	ng/ml

System Monitoring Compounds						
1) SA Tetrachlo...	3.467	4.101	120.3E6	59145017	21.673	21.396
28) SA Decachlor...	8.205	9.227	137.3E6	50966195	22.188	21.410

Target Compounds

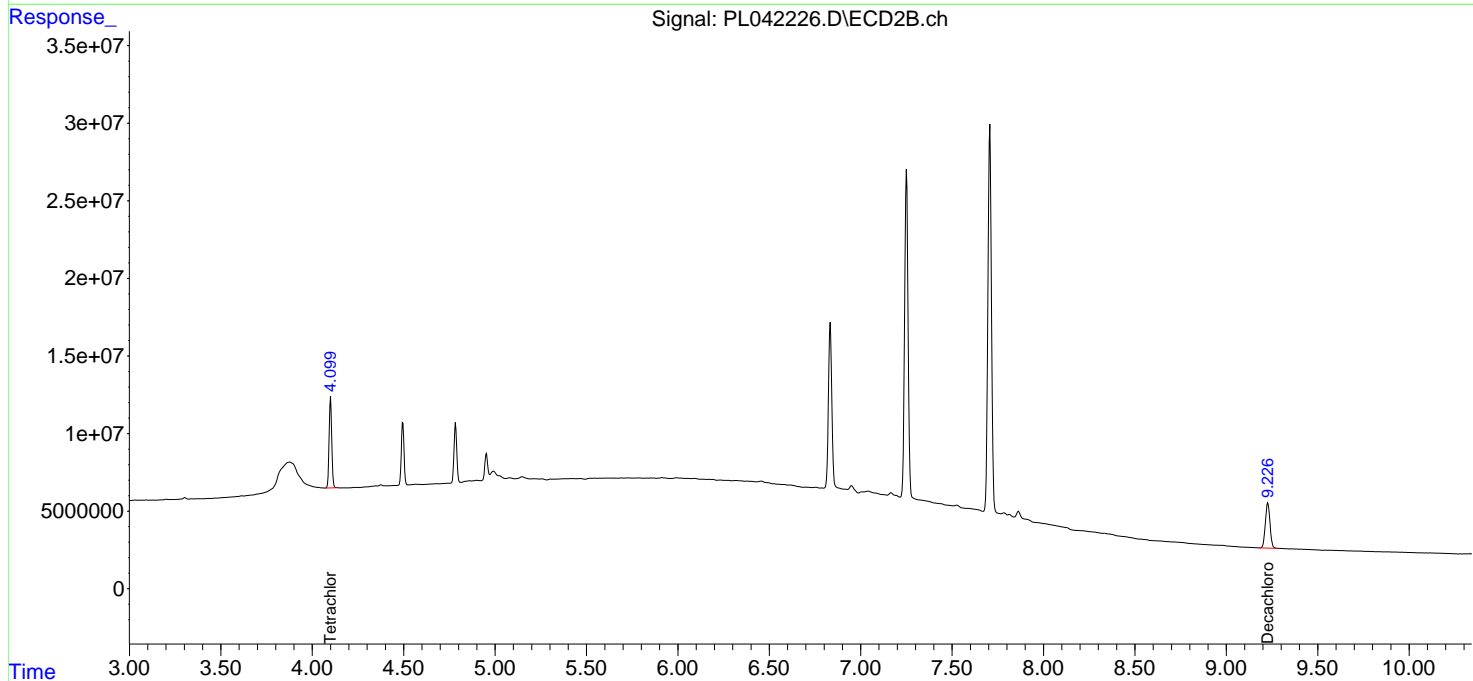
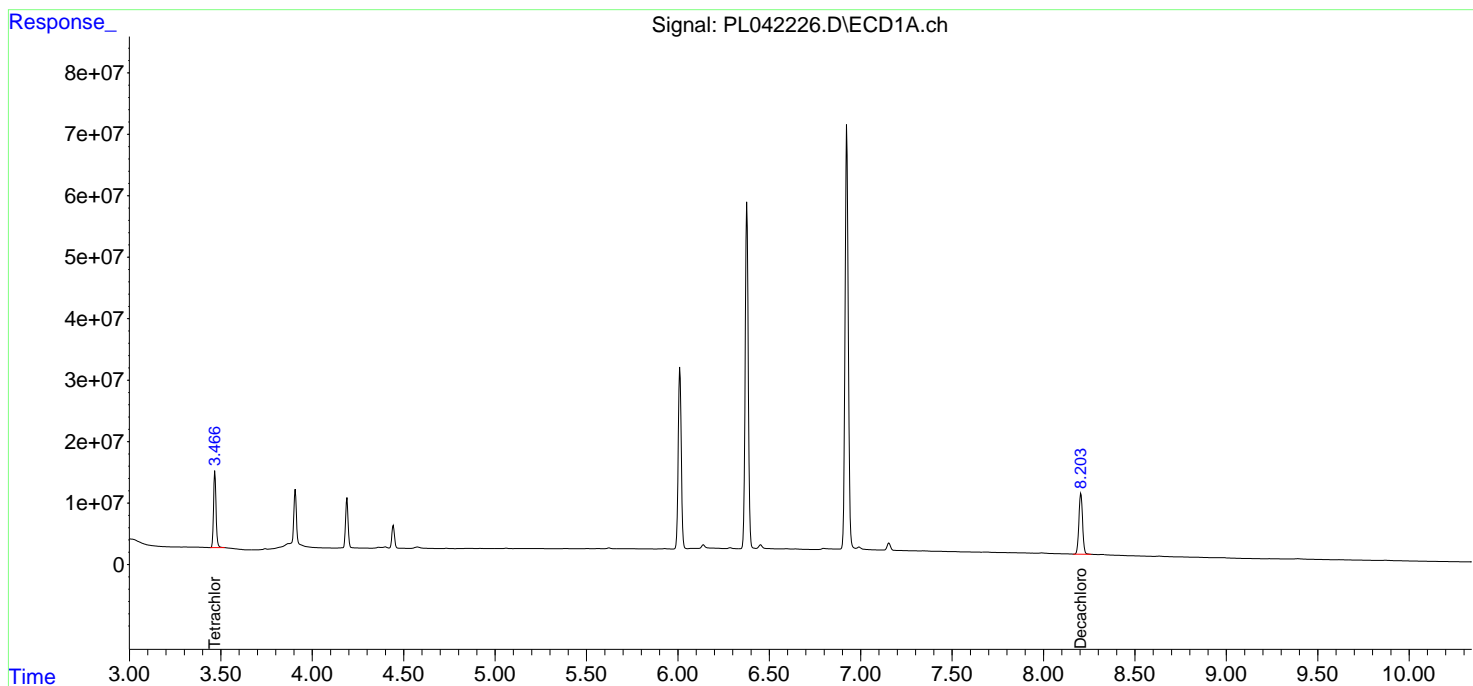
(f)=RT Delta > 1/2 Window (#)=Amounts differ by > 25% (m)=manual int.

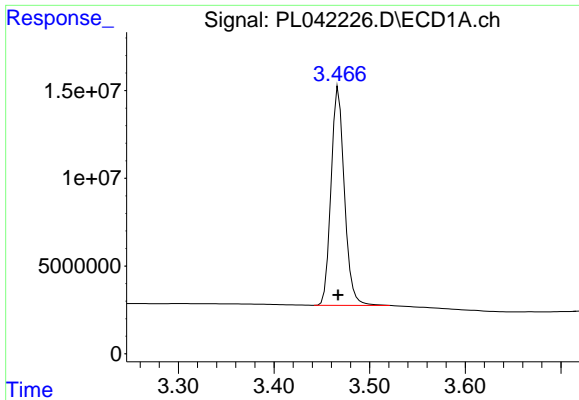
Data Path : Z:\pestpcbsrv\HPCHEM1\ECD_L\Data\PL111718\
 Data File : PL042226.D
 Signal(s) : Signal #1: ECD1A.ch Signal #2: ECD2B.ch
 Acq On : 15 Nov 2018 09:35
 Operator : AJ\SJ
 Sample : PEM
 Misc :
 ALS Vial : 3 Sample Multiplier: 1

Instrument :
 ECD_L
 ClientSampled :

Integration File signal 1: autoint1.e
 Integration File signal 2: autoint2.e
 Quant Time: Nov 15 11:21:52 2018
 Quant Method : Z:\pestpcbsrv\HPCHEM1\ECD_L\methods\Mirex-PL111718.M
 Quant Title : GC Extractables
 QLast Update : Thu Nov 15 11:21:10 2018
 Response via : Initial Calibration
 Integrator: ChemStation

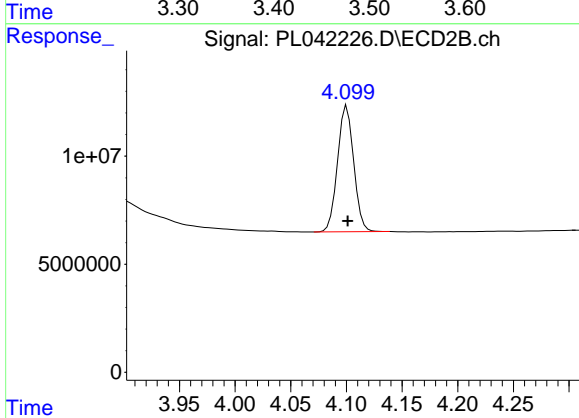
Volume Inj. : 2 µl
 Signal #1 Phase : ZB-MR2 Signal #2 Phase: ZB-MR1
 Signal #1 Info : 30M x 0.32mm x0.2 Signal #2 Info : 30M x 0.32mm x 0.50µm



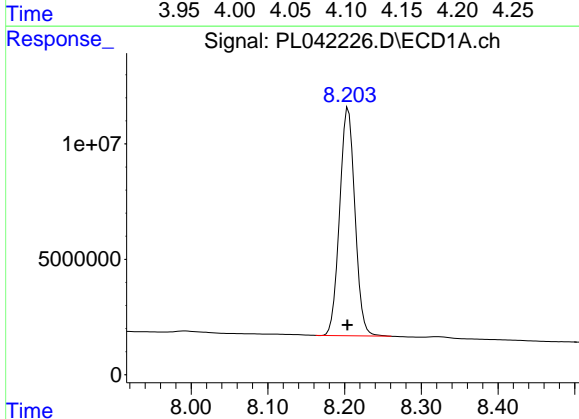


#1 Tetrachloro-m-xylene
R.T.: 3.467 min
Delta R.T.: 0.000 min
Response: 120293786
Conc: 21.67 ng/ml

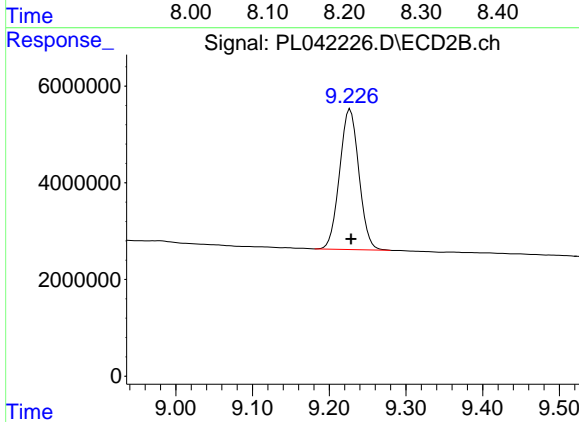
Instrument :
ECD_L
ClientSampleId :



#1 Tetrachloro-m-xylene
R.T.: 4.101 min
Delta R.T.: 0.000 min
Response: 59145017
Conc: 21.40 ng/ml



#28 Decachlorobiphenyl
R.T.: 8.205 min
Delta R.T.: 0.001 min
Response: 137307771
Conc: 22.19 ng/ml



#28 Decachlorobiphenyl
R.T.: 9.227 min
Delta R.T.: 0.000 min
Response: 50966195
Conc: 21.41 ng/ml