

Data Path : Z:\pestpcbsrv\HPCHEM1\ECD_L\Data\PL111721\
 Data File : PL071013.D
 Signal(s) : Signal #1: ECD1A.ch Signal #2: ECD2B.ch
 Acq On : 17 Nov 2021 10:36
 Operator : AR\AJ
 Sample : PEM
 Misc :
 ALS Vial : 3 Sample Multiplier: 1

Instrument :
 ECD_L
 ClientSampleId :
 PEM

Integration File signal 1: autoint1.e
 Integration File signal 2: autoint2.e
 Quant Time: Nov 18 00:47:16 2021
 Quant Method : Z:\pestpcbsrv\HPCHEM1\ECD_L\methods\PL110321.M
 Quant Title : GC Extractables
 QLast Update : Thu Nov 04 19:28:07 2021
 Response via : Initial Calibration
 Integrator: ChemStation

Volume Inj. : 1 µl
 Signal #1 Phase : ZB-MR2 Signal #2 Phase: ZB-MR1
 Signal #1 Info : 30M x 0.32mm x0.2 Signal #2 Info : 30M x 0.32mm x0.5µm

Compound	RT#1	RT#2	Resp#1	Resp#2	ng/ml	ng/ml

System Monitoring Compounds						
1) SA Tetrachlo...	4.567	5.501	9825603	24669086	20.060	19.565
28) SA Decachlor...	10.327	11.390	13579879	24881194	19.874	18.605
Target Compounds						
2) A alpha-BHC	5.272	6.081	5723588	16783017	8.550	9.117
3) MA gamma-BHC...	5.695	6.476	5852331	15738481	8.725	9.076
4) MA Heptachlor	6.077f	0.000	3434464	0	4.787	N.D. #
6) B beta-BHC	6.077	6.733	3434464	8858770	10.573	10.339
7) B delta-BHC	0.000	7.021f	0	206719	N.D.	0.124 #
10) B gamma-Chl...	7.298	0.000	179965	0	0.271	N.D. #
14) MA Endrin	7.982	8.892	27283703	57775695	48.122	49.880
15) B Endosulfa...	8.323f	0.000	28848	0	0.048	N.D. #
16) A 4,4'-DDD	8.150	9.038	1574553	3074745	3.099	2.555
17) MA 4,4'-DDT	8.411	9.355	52123688	112.0E6	94.775	88.788
18) B Endrin al...	8.484	9.262	377925	633283	0.832	0.655
20) A Methoxychlor	9.006	9.841	72938299	141.0E6	199.372	208.359
21) B Endrin ke...	9.229	9.994	1599153	1851311	2.236	1.290 #
25) Chlordane-3	7.298f	0.000	179965	0	2.948	N.D. #
27) Chlordane-5	8.323f	0.000	28848	0	1.290	N.D. #

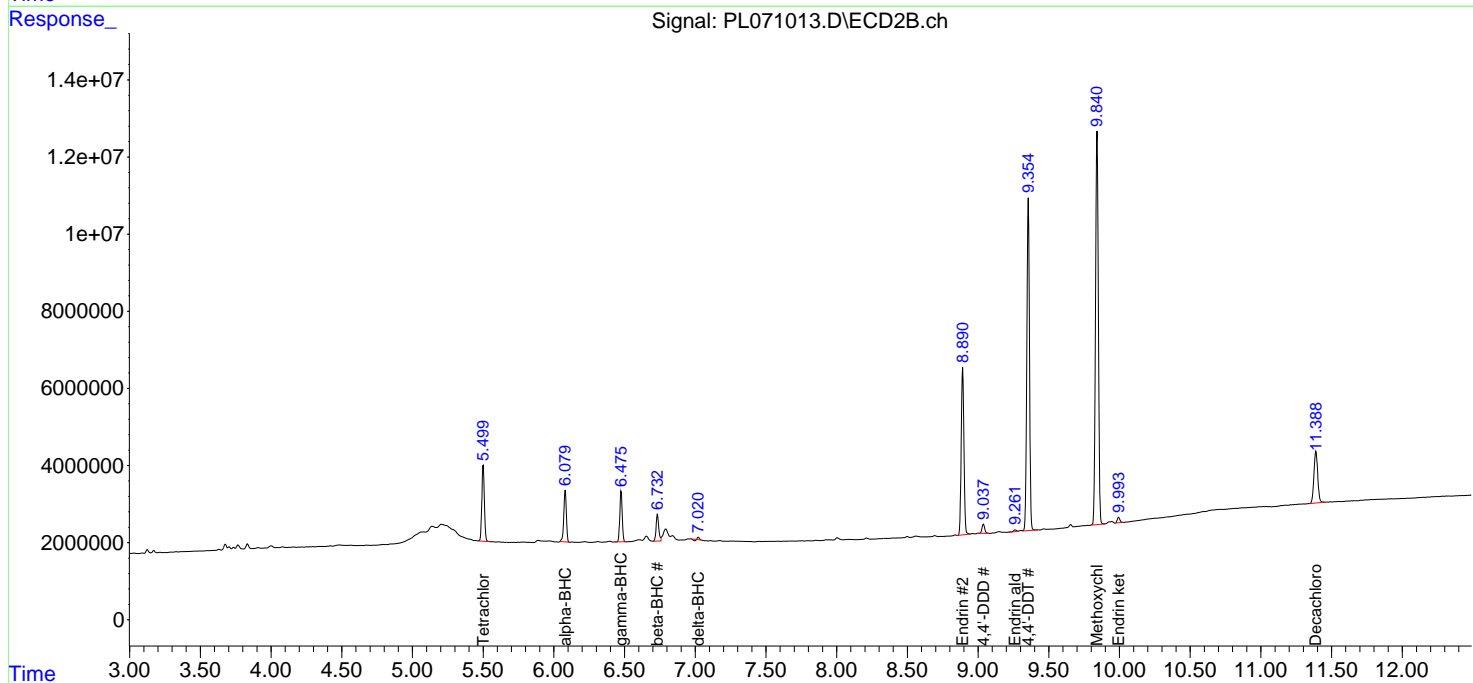
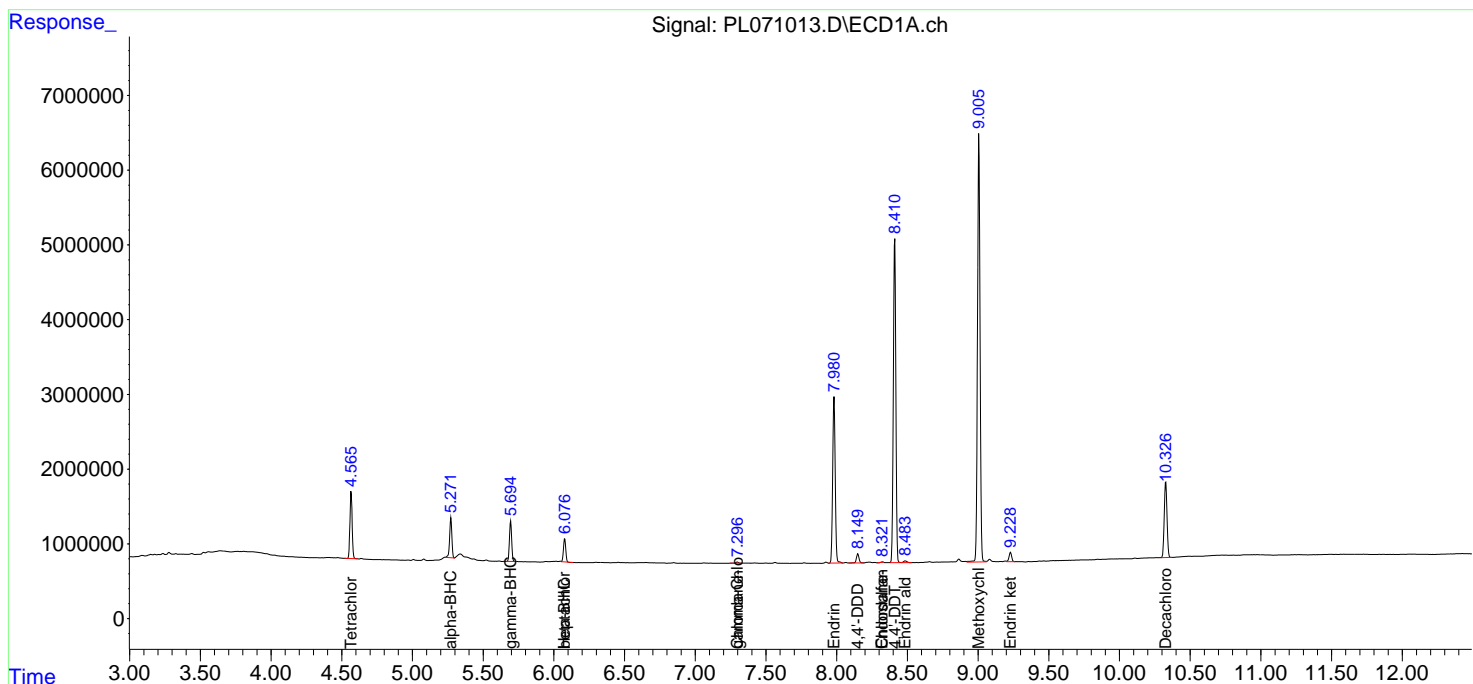
(f)=RT Delta > 1/2 Window (#)=Amounts differ by > 25% (m)=manual int.

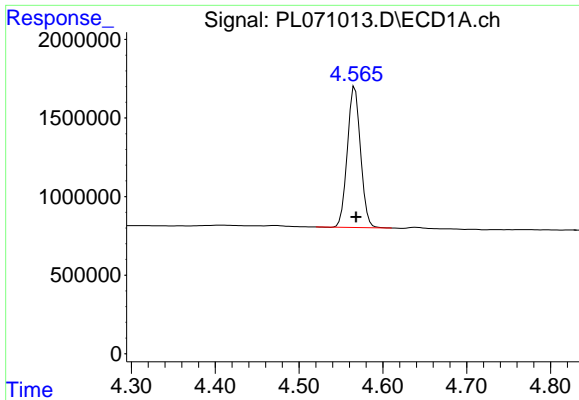
Data Path : Z:\pestpcbsrv\HPCHEM1\ECD_L\Data\PL111721\
 Data File : PL071013.D
 Signal(s) : Signal #1: ECD1A.ch Signal #2: ECD2B.ch
 Acq On : 17 Nov 2021 10:36
 Operator : AR\AJ
 Sample : PEM
 Misc :
 ALS Vial : 3 Sample Multiplier: 1

Instrument :
 ECD_L
 ClientSampleId :
 PEM

Integration File signal 1: autoint1.e
 Integration File signal 2: autoint2.e
 Quant Time: Nov 18 00:47:16 2021
 Quant Method : Z:\pestpcbsrv\HPCHEM1\ECD_L\methods\PL110321.M
 Quant Title : GC Extractables
 QLast Update : Thu Nov 04 19:28:07 2021
 Response via : Initial Calibration
 Integrator: ChemStation

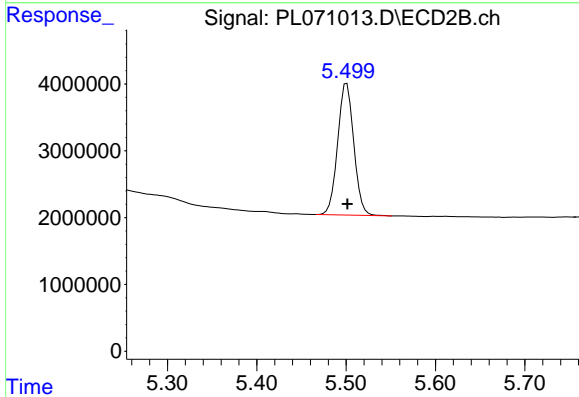
Volume Inj. : 1 µl
 Signal #1 Phase : ZB-MR2 Signal #2 Phase: ZB-MR1
 Signal #1 Info : 30M x 0.32mm x0.2 Signal #2 Info : 30M x 0.32mm x0.5µm



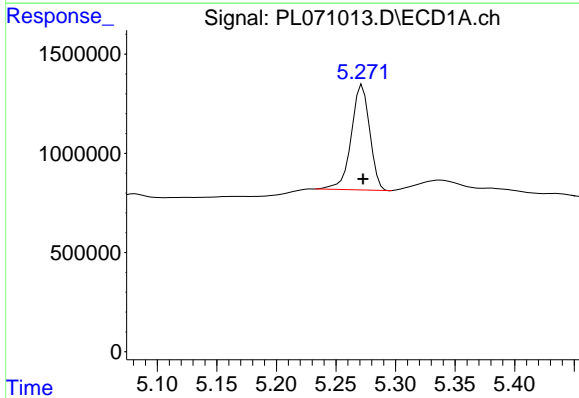


#1 Tetrachloro-m-xylene
 R.T.: 4.567 min
 Delta R.T.: -0.001 min
 Response: 9825603
 Conc: 20.06 ng/ml

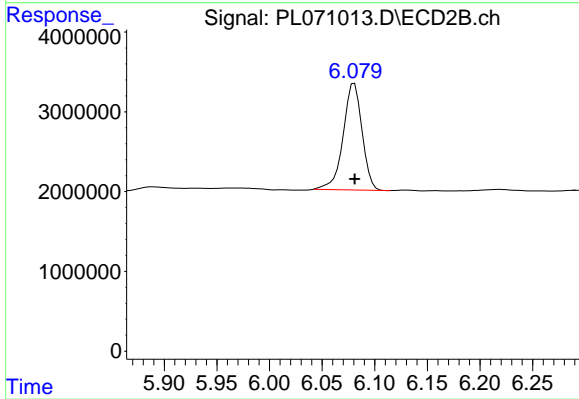
Instrument :
 ECD_L
 ClientSampleId :
 PEM



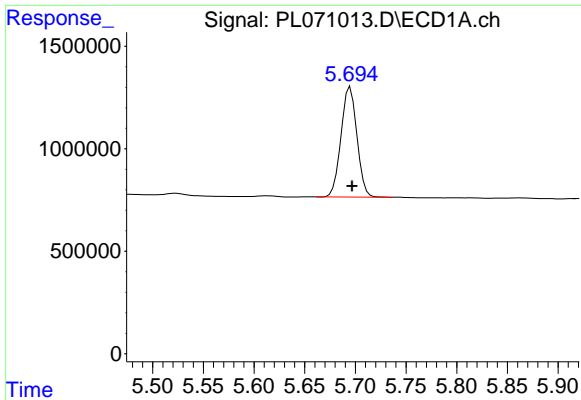
#1 Tetrachloro-m-xylene
 R.T.: 5.501 min
 Delta R.T.: 0.000 min
 Response: 24669086
 Conc: 19.57 ng/ml



#2 alpha-BHC
 R.T.: 5.272 min
 Delta R.T.: 0.000 min
 Response: 5723588
 Conc: 8.55 ng/ml



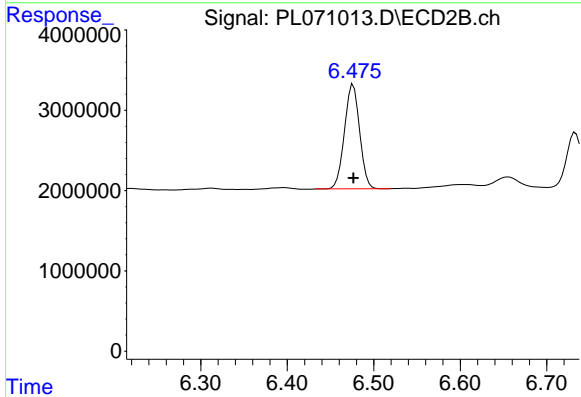
#2 alpha-BHC
 R.T.: 6.081 min
 Delta R.T.: 0.000 min
 Response: 16783017
 Conc: 9.12 ng/ml



#3 gamma-BHC (Lindane)

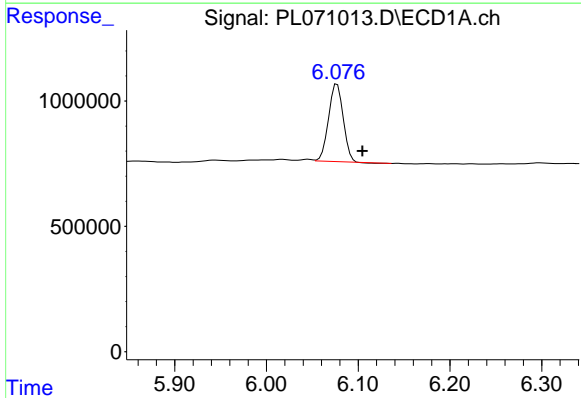
R.T.: 5.695 min
 Delta R.T.: -0.002 min
 Response: 5852331
 Conc: 8.72 ng/ml

Instrument :
 ECD_L
 ClientSampleId :
 PEM



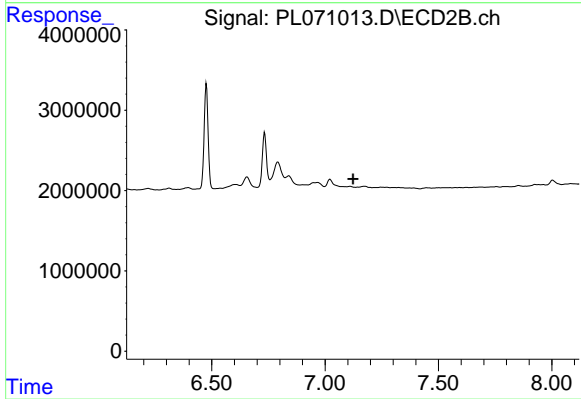
#3 gamma-BHC (Lindane)

R.T.: 6.476 min
 Delta R.T.: 0.000 min
 Response: 15738481
 Conc: 9.08 ng/ml



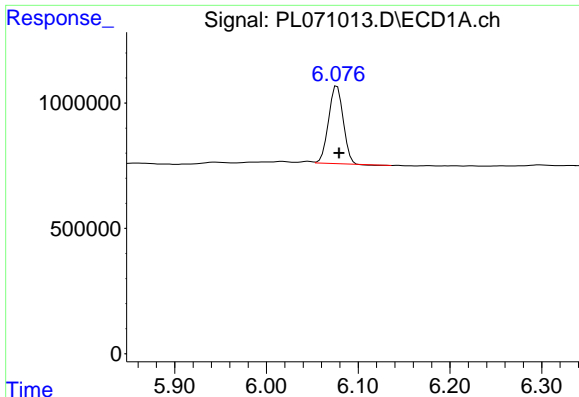
#4 Heptachlor

R.T.: 6.077 min
 Delta R.T.: -0.028 min
 Response: 3434464
 Conc: 4.79 ng/ml



#4 Heptachlor

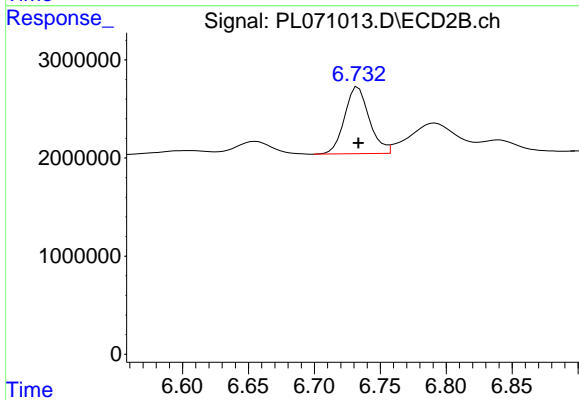
R.T.: 0.000 min
 Exp R.T. : 7.124 min
 Response: 0
 Conc: N.D.



#6 beta-BHC

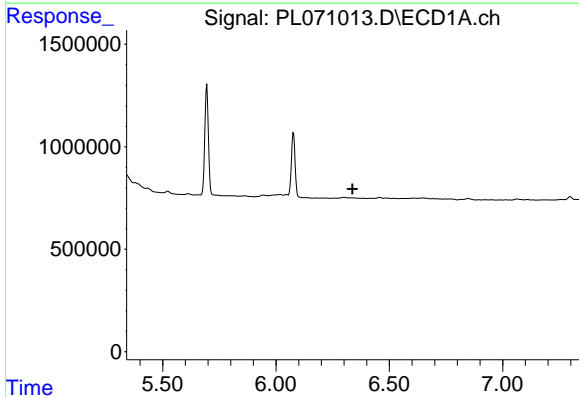
R.T.: 6.077 min
 Delta R.T.: -0.002 min
 Response: 3434464
 Conc: 10.57 ng/ml

Instrument :
 ECD_L
 ClientSampleId :
 PEM



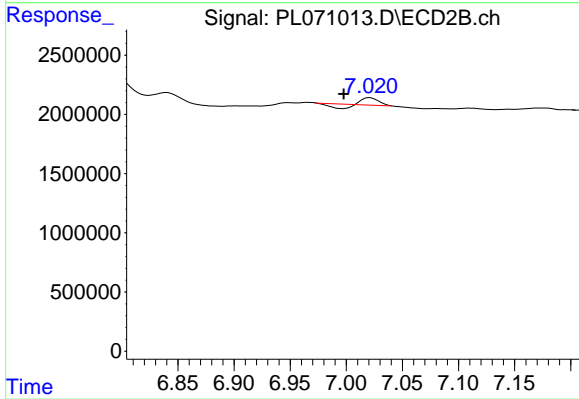
#6 beta-BHC

R.T.: 6.733 min
 Delta R.T.: 0.000 min
 Response: 8858770
 Conc: 10.34 ng/ml



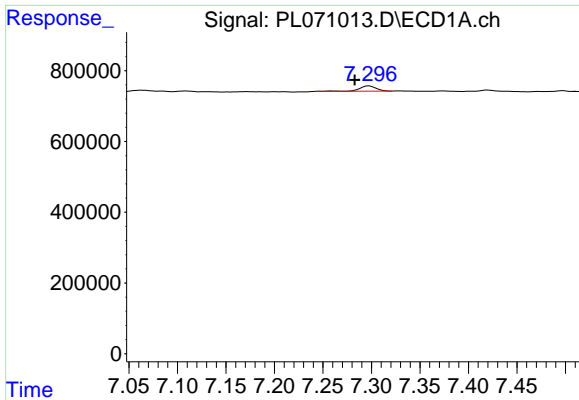
#7 delta-BHC

R.T.: 0.000 min
 Exp R.T. : 6.338 min
 Response: 0
 Conc: N.D.



#7 delta-BHC

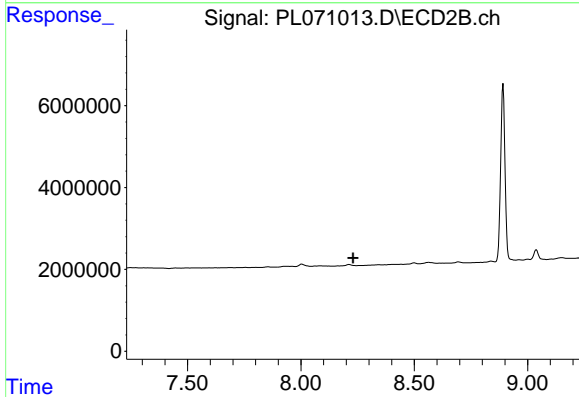
R.T.: 7.021 min
 Delta R.T.: 0.023 min
 Response: 206719
 Conc: 0.12 ng/ml



#10 gamma-Chlordane

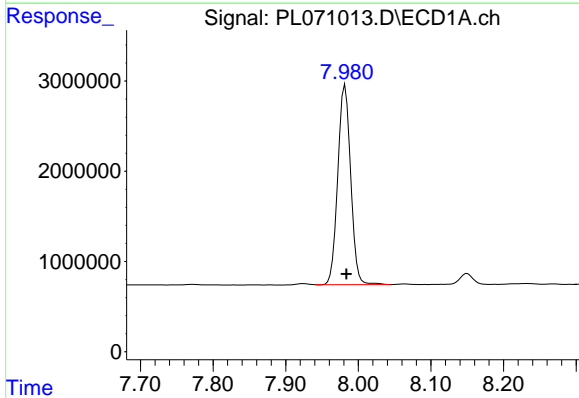
R.T.: 7.298 min
 Delta R.T.: 0.015 min
 Response: 179965
 Conc: 0.27 ng/ml

Instrument :
 ECD_L
 ClientSampleId :
 PEM



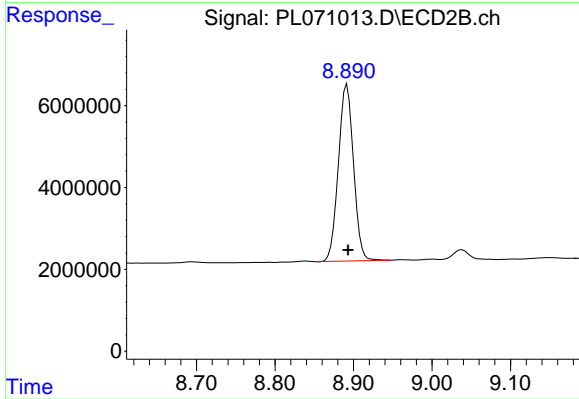
#10 gamma-Chlordane

R.T.: 0.000 min
 Exp R.T. : 8.230 min
 Response: 0
 Conc: N.D.



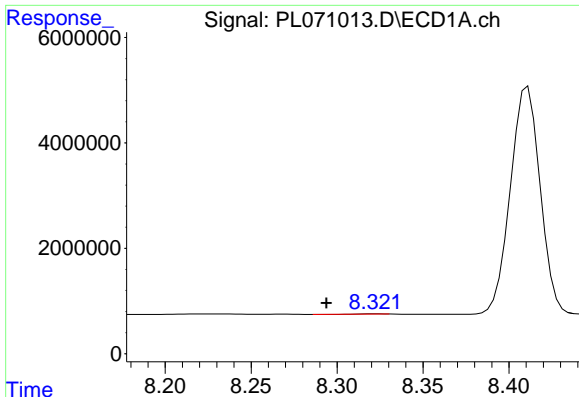
#14 Endrin

R.T.: 7.982 min
 Delta R.T.: -0.002 min
 Response: 27283703
 Conc: 48.12 ng/ml



#14 Endrin

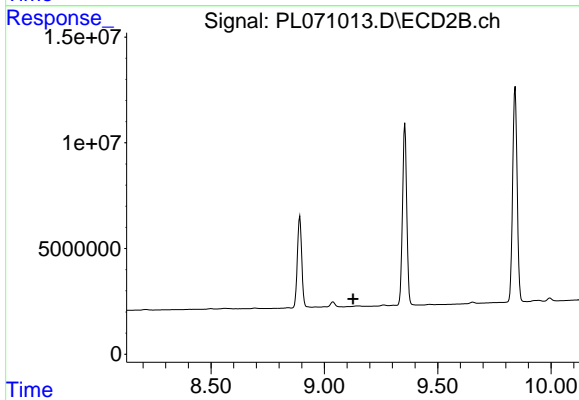
R.T.: 8.892 min
 Delta R.T.: -0.001 min
 Response: 57775695
 Conc: 49.88 ng/ml



#15 Endosulfan II

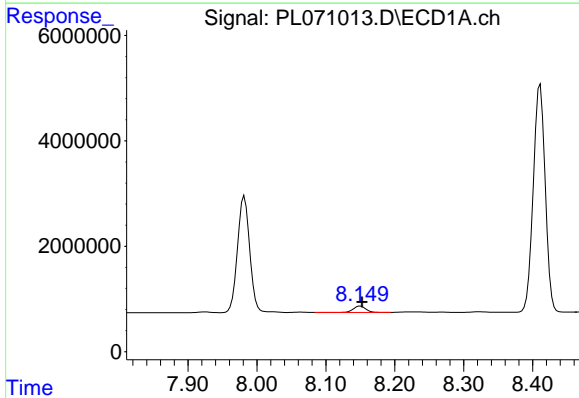
R.T.: 8.323 min
 Delta R.T.: 0.029 min
 Response: 28848
 Conc: 0.05 ng/ml

Instrument :
 ECD_L
 ClientSampleId :
 PEM



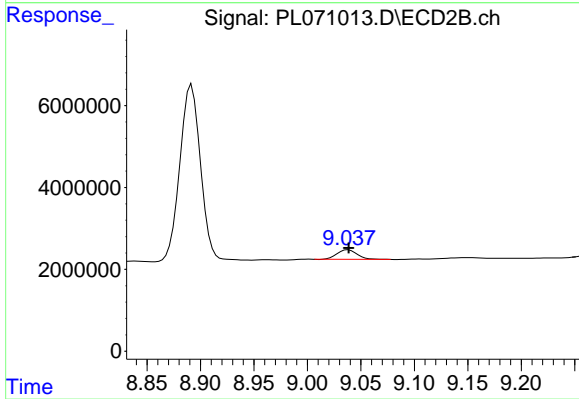
#15 Endosulfan II

R.T.: 0.000 min
 Exp R.T. : 9.126 min
 Response: 0
 Conc: N.D.



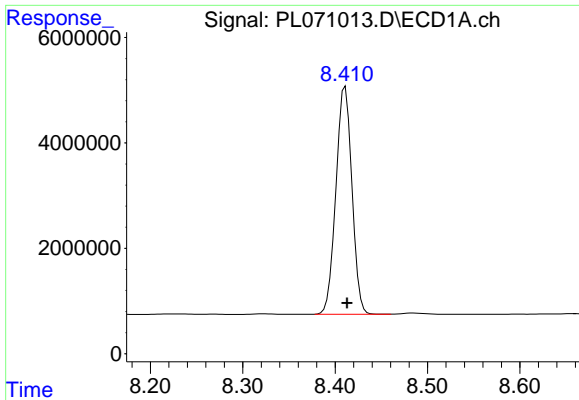
#16 4,4'-DDD

R.T.: 8.150 min
 Delta R.T.: -0.002 min
 Response: 1574553
 Conc: 3.10 ng/ml



#16 4,4'-DDD

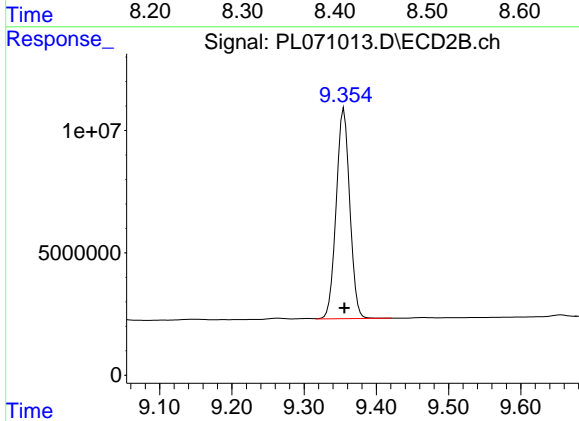
R.T.: 9.038 min
 Delta R.T.: 0.000 min
 Response: 3074745
 Conc: 2.55 ng/ml



#17 4,4'-DDT

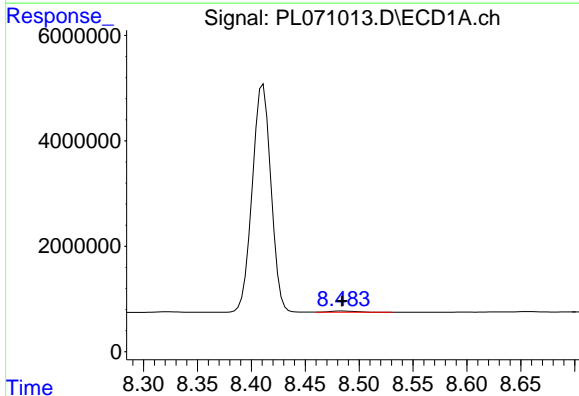
R.T.: 8.411 min
 Delta R.T.: -0.002 min
 Response: 52123688
 Conc: 94.77 ng/ml

Instrument :
 ECD_L
 ClientSampleId :
 PEM



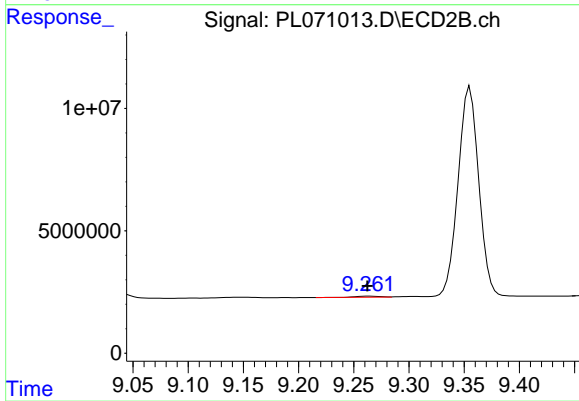
#17 4,4'-DDT

R.T.: 9.355 min
 Delta R.T.: 0.000 min
 Response: 112012176
 Conc: 88.79 ng/ml



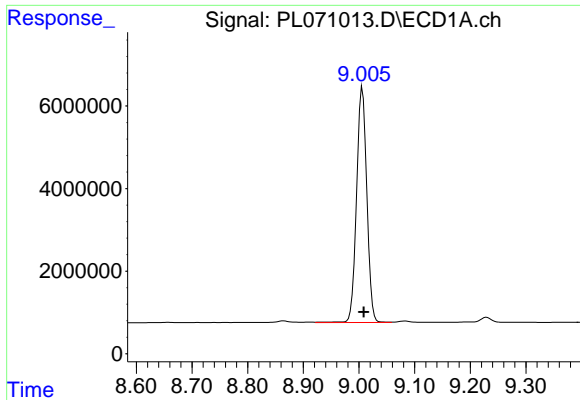
#18 Endrin aldehyde

R.T.: 8.484 min
 Delta R.T.: 0.000 min
 Response: 377925
 Conc: 0.83 ng/ml



#18 Endrin aldehyde

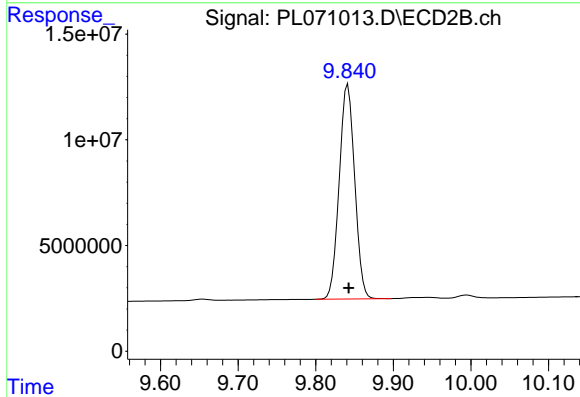
R.T.: 9.262 min
 Delta R.T.: 0.000 min
 Response: 633283
 Conc: 0.65 ng/ml



#20 Methoxychlor

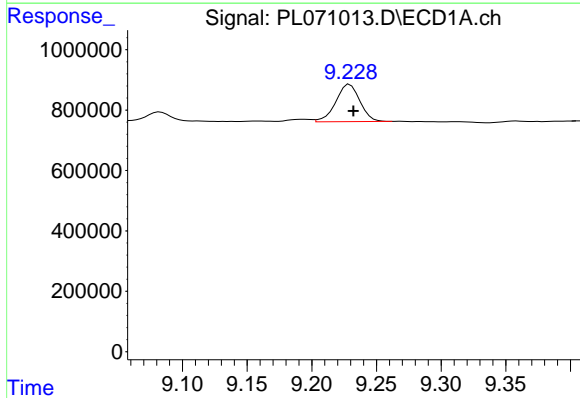
R.T.: 9.006 min
 Delta R.T.: -0.003 min
 Response: 72938299
 Conc: 199.37 ng/ml

Instrument :
 ECD_L
 ClientSampleId :
 PEM



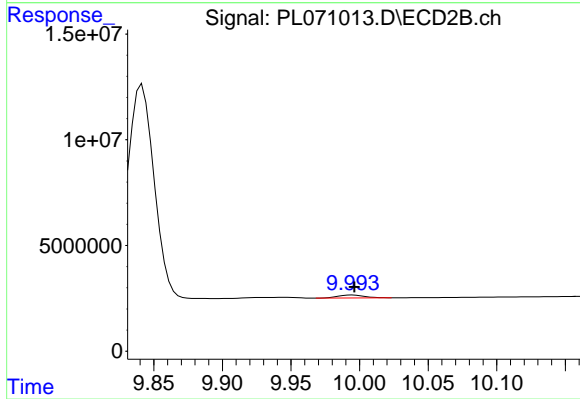
#20 Methoxychlor

R.T.: 9.841 min
 Delta R.T.: 0.000 min
 Response: 141017577
 Conc: 208.36 ng/ml



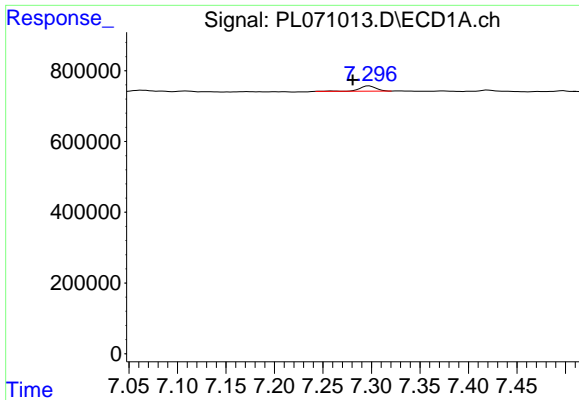
#21 Endrin ketone

R.T.: 9.229 min
 Delta R.T.: -0.003 min
 Response: 1599153
 Conc: 2.24 ng/ml



#21 Endrin ketone

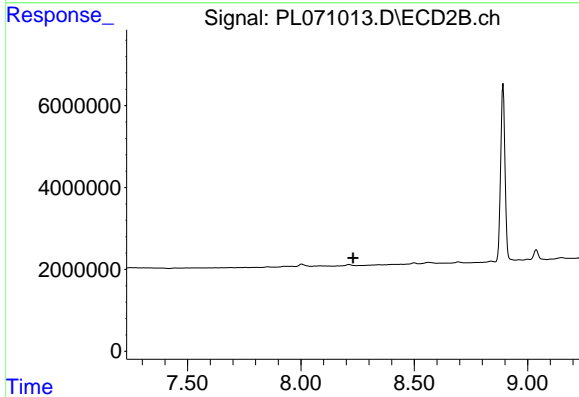
R.T.: 9.994 min
 Delta R.T.: -0.002 min
 Response: 1851311
 Conc: 1.29 ng/ml



#25 Chlordane-3

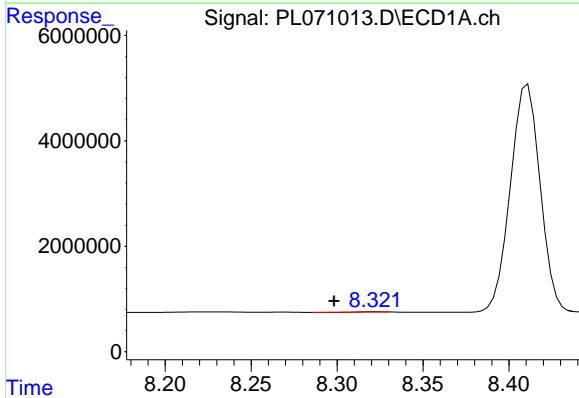
R.T.: 7.298 min
 Delta R.T.: 0.017 min
 Response: 179965
 Conc: 2.95 ng/ml

Instrument :
 ECD_L
 ClientSampleId :
 PEM



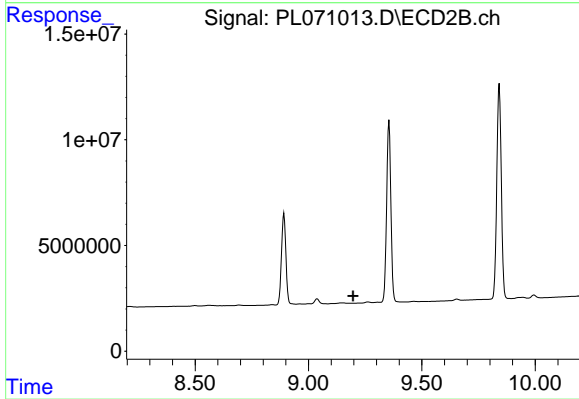
#25 Chlordane-3

R.T.: 0.000 min
 Exp R.T. : 8.230 min
 Response: 0
 Conc: N.D.



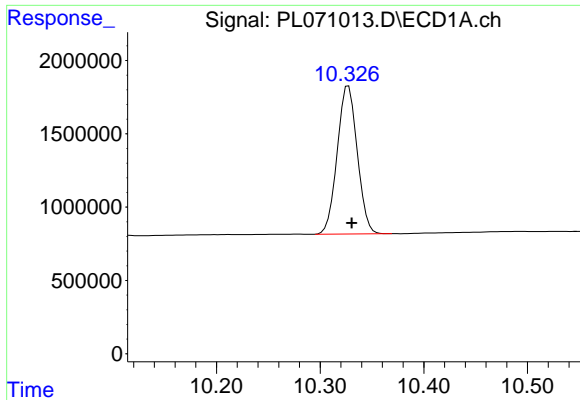
#27 Chlordane-5

R.T.: 8.323 min
 Delta R.T.: 0.025 min
 Response: 28848
 Conc: 1.29 ng/ml



#27 Chlordane-5

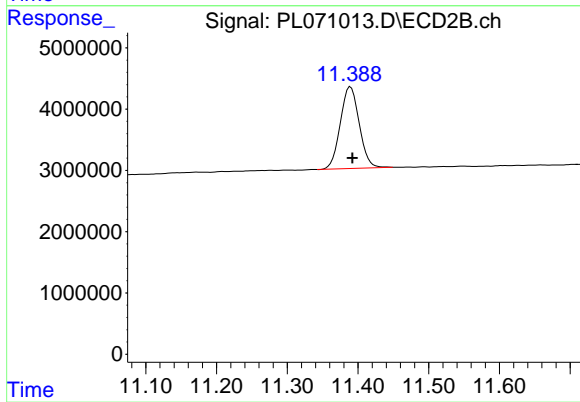
R.T.: 0.000 min
 Exp R.T. : 9.197 min
 Response: 0
 Conc: N.D.



#28 Decachlorobiphenyl

R.T.: 10.327 min
Delta R.T.: -0.003 min
Response: 13579879
Conc: 19.87 ng/ml

Instrument :
ECD_L
ClientSampleId :
PEM



#28 Decachlorobiphenyl

R.T.: 11.390 min
Delta R.T.: -0.002 min
Response: 24881194
Conc: 18.60 ng/ml