

Data Path : Z:\pestpcbsrv\HPCHEM1\ECD_L\Data\PL111721\
 Data File : PL071035.D
 Signal(s) : Signal #1: ECD1A.ch Signal #2: ECD2B.ch
 Acq On : 17 Nov 2021 19:20
 Operator : AR\AJ
 Sample : M4713-01MSD
 Misc :
 ALS Vial : 23 Sample Multiplier: 1

Instrument :
 ECD_L
 ClientSampleId :
 TP-2-COMPMSD

Integration File signal 1: autoint1.e
 Integration File signal 2: autoint2.e
 Quant Time: Nov 18 00:53:49 2021
 Quant Method : Z:\pestpcbsrv\HPCHEM1\ECD_L\methods\PL110321.M
 Quant Title : GC Extractables
 QLast Update : Thu Nov 04 19:28:07 2021
 Response via : Initial Calibration
 Integrator: ChemStation

Volume Inj. : 1 µl
 Signal #1 Phase : ZB-MR2 Signal #2 Phase: ZB-MR1
 Signal #1 Info : 30M x 0.32mm x0.2 Signal #2 Info : 30M x 0.32mm x0.5µm

Compound	RT#1	RT#2	Resp#1	Resp#2	ng/ml	ng/ml

System Monitoring Compounds						
1) SA Tetrachlo...	4.566	5.520f	10737141	28092978	21.921	22.281
28) SA Decachlor...	10.328	11.409f	13846045	26024944	20.264	19.460
Target Compounds						
2) A alpha-BHC	5.272	6.100f	33675416	99667224	50.306	54.143
3) MA gamma-BHC...	5.695	6.496f	33480367	89668348	49.912	51.710
4) MA Heptachlor	6.102	7.142f	35046534	78025872	48.845	48.037
5) MB Aldrin	6.426	7.512f	32569921	83853366	50.933	51.639
6) B beta-BHC	6.077	6.753f	15411110	43182372	47.443	50.398
7) B delta-BHC	6.336	7.019f	32865726	82261359	49.660	49.192
8) B Heptachlo...	7.003	7.979f	31778824	79656825	48.879	52.263
9) A Endosulfan I	7.405	8.384f	29826047	72706267	48.690	50.539
10) B gamma-Chl...	7.279	8.249f	31697973	78013024	47.751	50.384
11) B alpha-Chl...	7.349	8.329f	32272699	77115598	48.431	50.702
12) B 4,4'-DDE	7.564	8.519f	28649658	76301705	49.173	51.712
13) MA Dieldrin	7.691	8.673f	30458606	75650712	48.795	51.918
14) MA Endrin	7.982	8.912f	27643444	63941340	48.757	55.203
15) B Endosulfa...	8.293	9.146f	27500171	57720003	45.429	47.259
16) A 4,4'-DDD	8.150	9.058f	25761735	56758055	50.703	47.164
17) MA 4,4'-DDT	8.410	9.374f	23885200	56468386	43.430	44.760
18) B Endrin al...	8.481	9.281f	22070872	48385355	48.581	50.034
19) B Endosulfa...	8.712	9.519f	29094283	60686074	47.163	48.964
20) A Methoxychlor	9.006	9.861f	17133569	31891663	46.833	47.121
21) B Endrin ke...	9.229	10.015f	34438047	68420052	48.161	47.663
22) Mirex	9.413	10.479f	29354697	41525482	47.798	39.867
23) Chlordane-1	0.000	6.854f	0	3729177	N.D.	76.796 #
24) Chlordane-2	6.575	0.000	360190	0	15.686	N.D. #
25) Chlordane-3	7.279	8.249f	31697973	78013024	519.188	385.958 #
26) Chlordane-4	7.349	8.329f	32272699	77115598	491.584	317.779 #
27) Chlordane-5	8.293	9.209	27500171	97723	1229.999	2.359 #

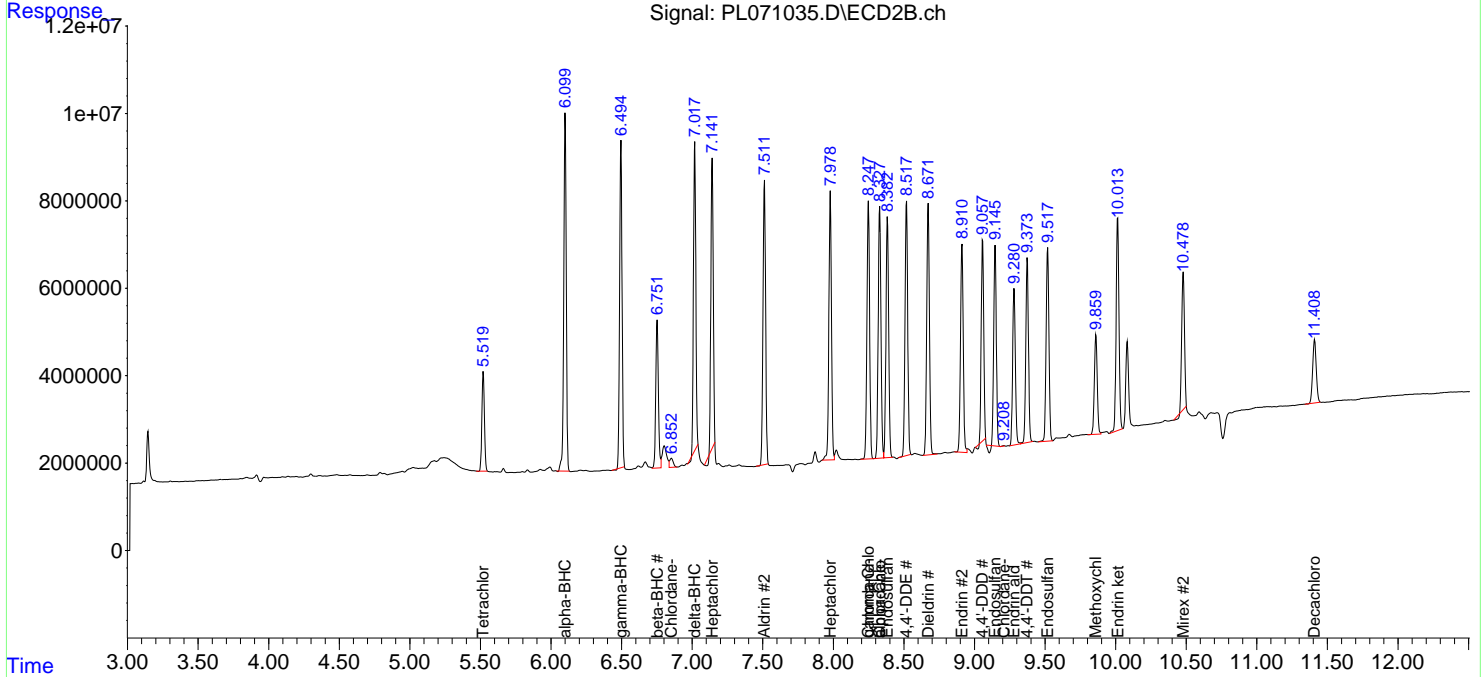
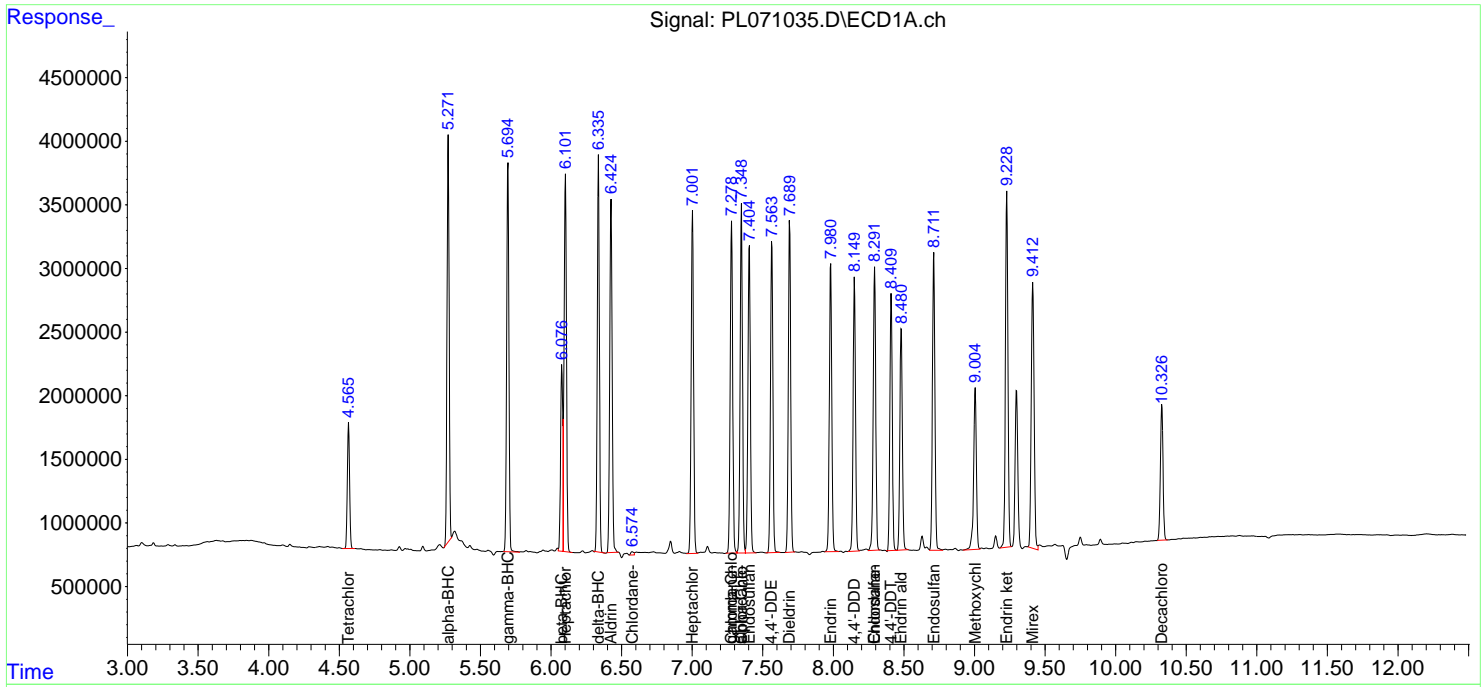
(f)=RT Delta > 1/2 Window (#)=Amounts differ by > 25% (m)=manual int.

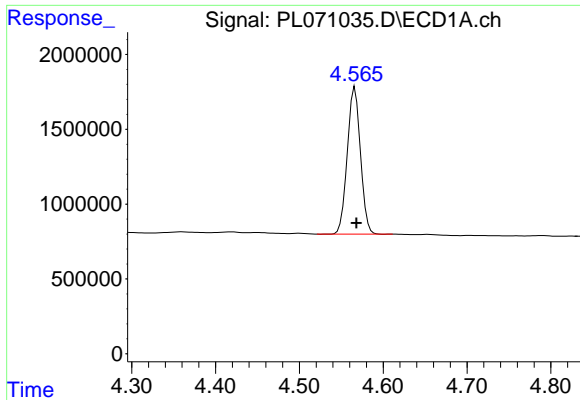
Data Path : Z:\pestpcbsrv\HPCHEM1\ECD_L\Data\PL111721\
 Data File : PL071035.D
 Signal(s) : Signal #1: ECD1A.ch Signal #2: ECD2B.ch
 Acq On : 17 Nov 2021 19:20
 Operator : AR\AJ
 Sample : M4713-01MSD
 Misc :
 ALS Vial : 23 Sample Multiplier: 1

Instrument :
 ECD_L
 ClientSampleId :
 TP-2-COMPMSD

Integration File signal 1: autoint1.e
 Integration File signal 2: autoint2.e
 Quant Time: Nov 18 00:53:49 2021
 Quant Method : Z:\pestpcbsrv\HPCHEM1\ECD_L\methods\PL110321.M
 Quant Title : GC Extractables
 QLast Update : Thu Nov 04 19:28:07 2021
 Response via : Initial Calibration
 Integrator: ChemStation

Volume Inj. : 1 µl
 Signal #1 Phase : ZB-MR2 Signal #2 Phase: ZB-MR1
 Signal #1 Info : 30M x 0.32mm x0.2 Signal #2 Info : 30M x 0.32mm x0.5µm

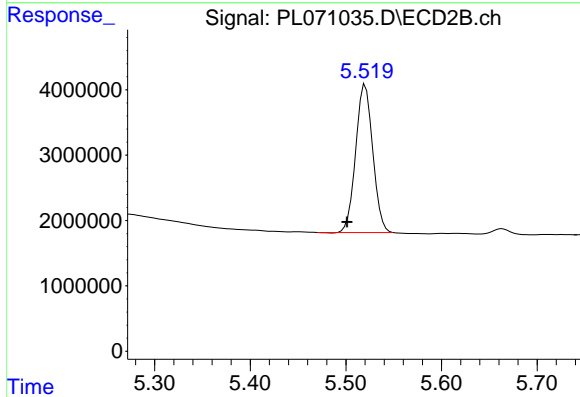




#1 Tetrachloro-m-xylene

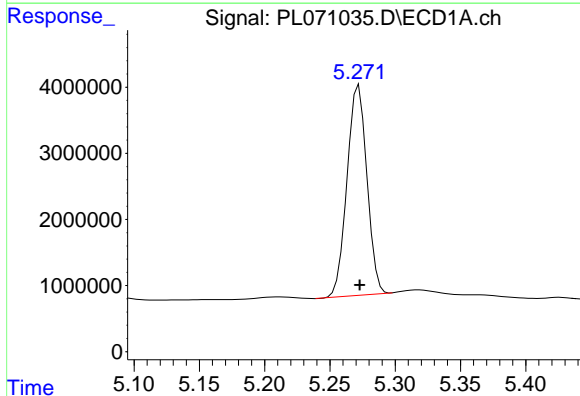
R.T.: 4.566 min
 Delta R.T.: -0.002 min
 Response: 10737141
 Conc: 21.92 ng/ml

Instrument :
 ECD_L
 ClientSampleId :
 TP-2-COMPMSD



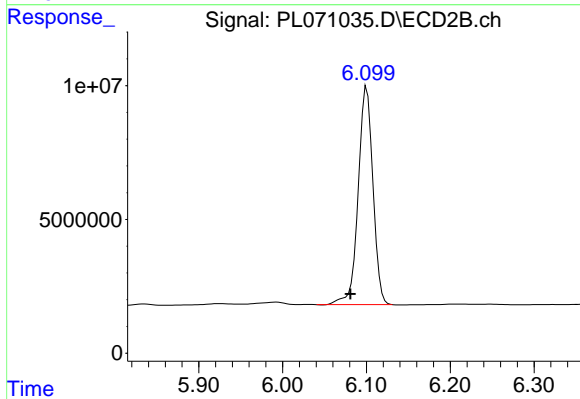
#1 Tetrachloro-m-xylene

R.T.: 5.520 min
 Delta R.T.: 0.019 min
 Response: 28092978
 Conc: 22.28 ng/ml



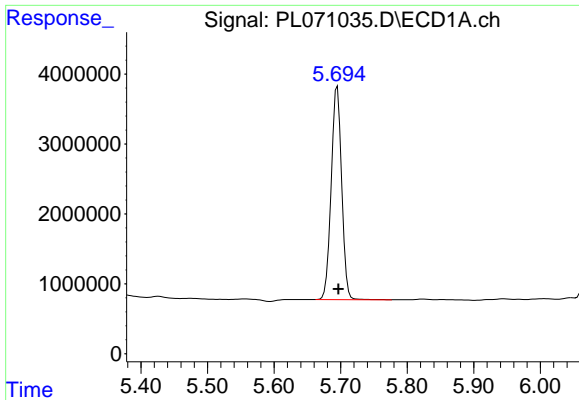
#2 alpha-BHC

R.T.: 5.272 min
 Delta R.T.: 0.000 min
 Response: 33675416
 Conc: 50.31 ng/ml



#2 alpha-BHC

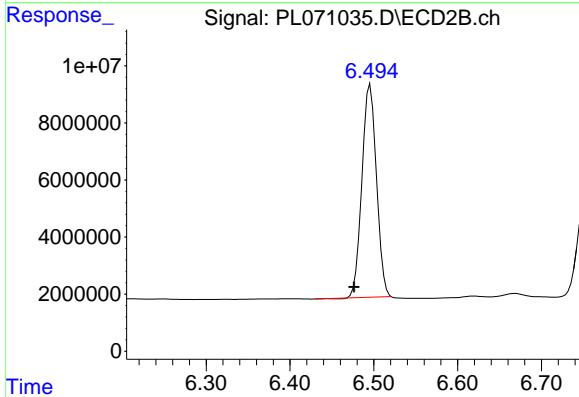
R.T.: 6.100 min
 Delta R.T.: 0.019 min
 Response: 99667224
 Conc: 54.14 ng/ml



#3 gamma-BHC (Lindane)

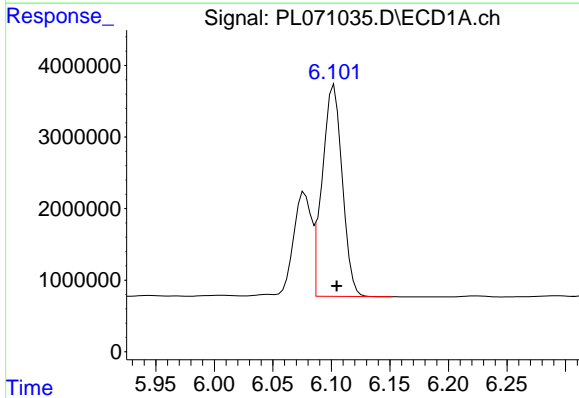
R.T.: 5.695 min
 Delta R.T.: -0.002 min
 Response: 33480367
 Conc: 49.91 ng/ml

Instrument :
 ECD_L
 ClientSampleId :
 TP-2-COMPMSD



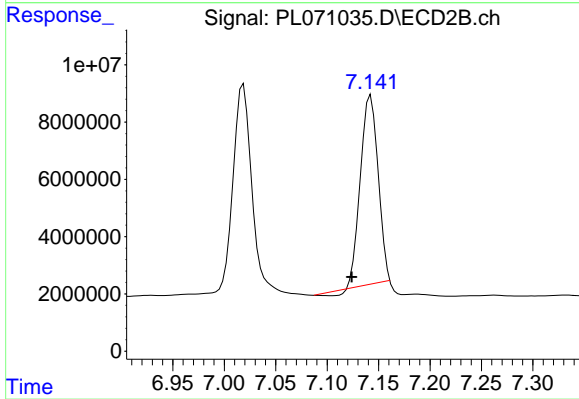
#3 gamma-BHC (Lindane)

R.T.: 6.496 min
 Delta R.T.: 0.019 min
 Response: 89668348
 Conc: 51.71 ng/ml



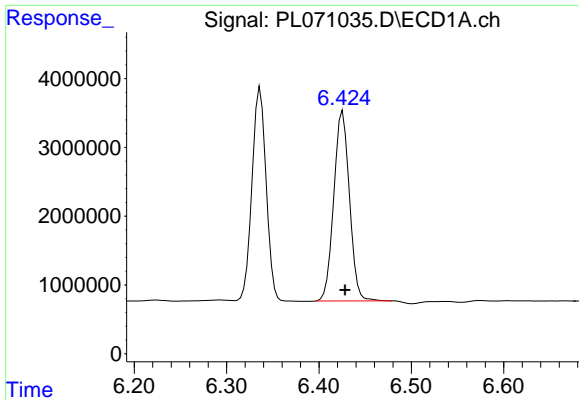
#4 Heptachlor

R.T.: 6.102 min
 Delta R.T.: -0.002 min
 Response: 35046534
 Conc: 48.84 ng/ml



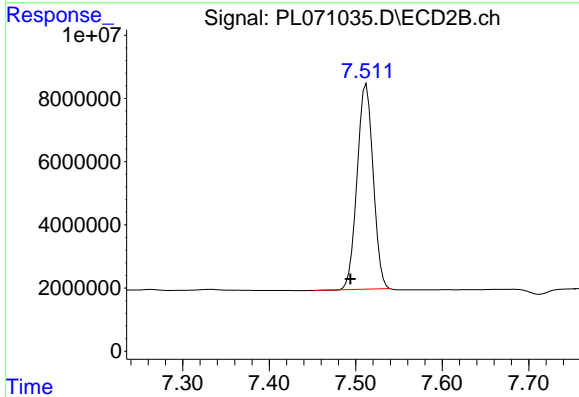
#4 Heptachlor

R.T.: 7.142 min
 Delta R.T.: 0.018 min
 Response: 78025872
 Conc: 48.04 ng/ml

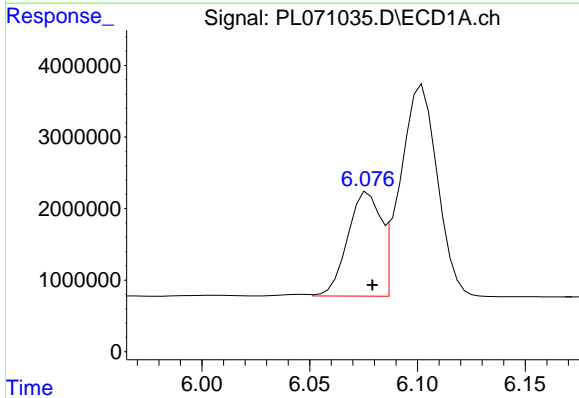


#5 Aldrin
 R.T.: 6.426 min
 Delta R.T.: -0.003 min
 Response: 32569921
 Conc: 50.93 ng/ml

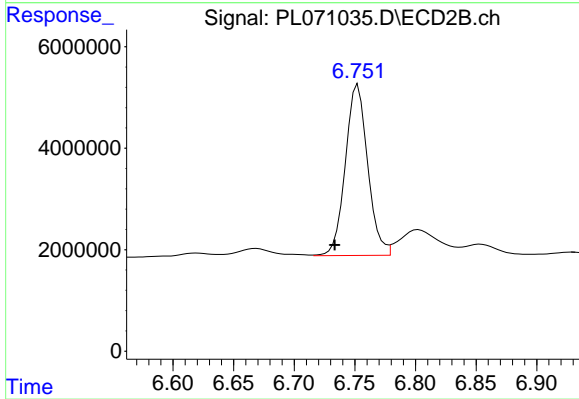
Instrument :
 ECD_L
 ClientSampleId :
 TP-2-COMPMSD



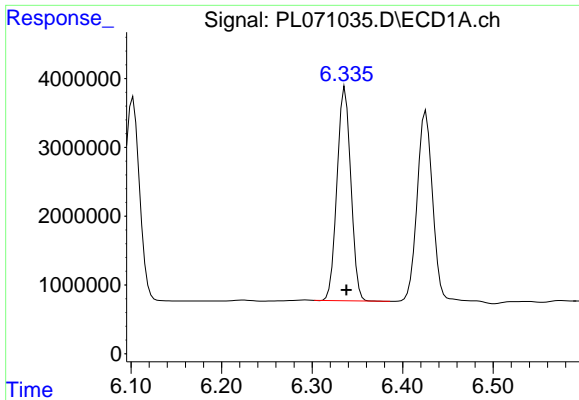
#5 Aldrin
 R.T.: 7.512 min
 Delta R.T.: 0.019 min
 Response: 83853366
 Conc: 51.64 ng/ml



#6 beta-BHC
 R.T.: 6.077 min
 Delta R.T.: -0.002 min
 Response: 15411110
 Conc: 47.44 ng/ml



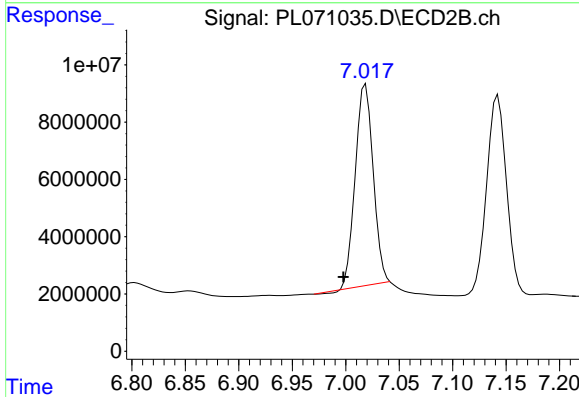
#6 beta-BHC
 R.T.: 6.753 min
 Delta R.T.: 0.019 min
 Response: 43182372
 Conc: 50.40 ng/ml



#7 delta-BHC

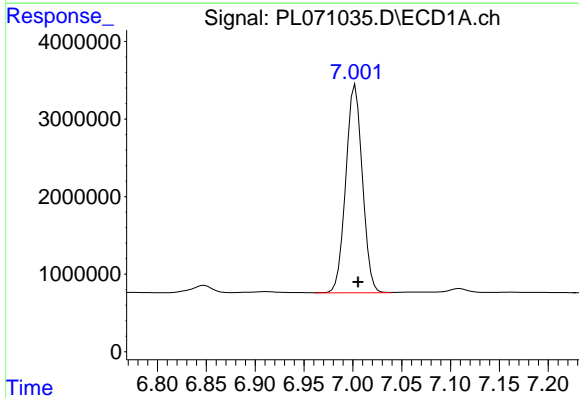
R.T.: 6.336 min
 Delta R.T.: -0.002 min
 Response: 32865726
 Conc: 49.66 ng/ml

Instrument :
 ECD_L
 ClientSampleId :
 TP-2-COMPMSD



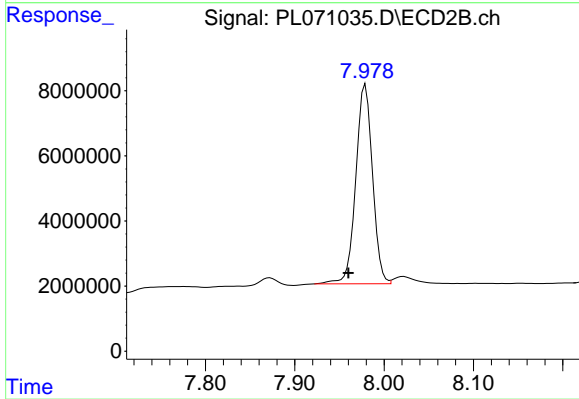
#7 delta-BHC

R.T.: 7.019 min
 Delta R.T.: 0.021 min
 Response: 82261359
 Conc: 49.19 ng/ml



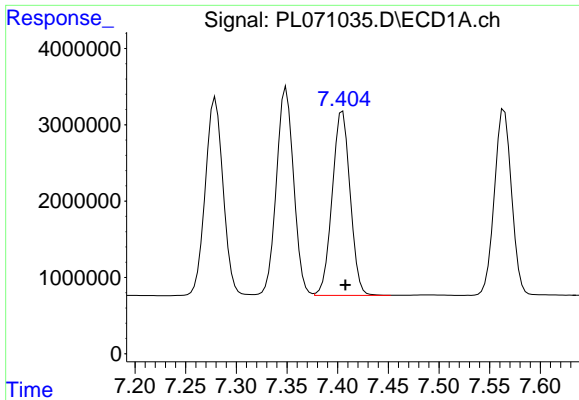
#8 Heptachlor epoxide

R.T.: 7.003 min
 Delta R.T.: -0.003 min
 Response: 31778824
 Conc: 48.88 ng/ml



#8 Heptachlor epoxide

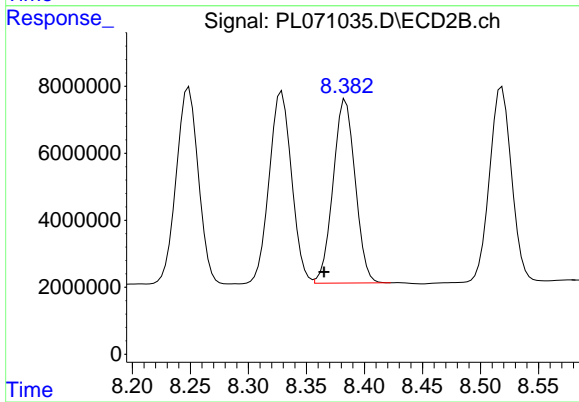
R.T.: 7.979 min
 Delta R.T.: 0.019 min
 Response: 79656825
 Conc: 52.26 ng/ml



#9 Endosulfan I

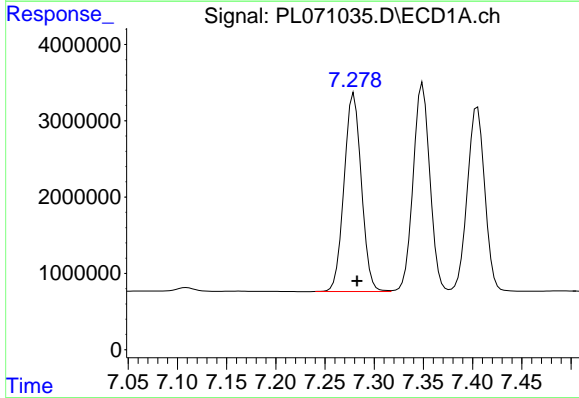
R.T.: 7.405 min
Delta R.T.: -0.003 min
Response: 29826047
Conc: 48.69 ng/ml

Instrument :
ECD_L
ClientSampleId :
TP-2-COMPMSD



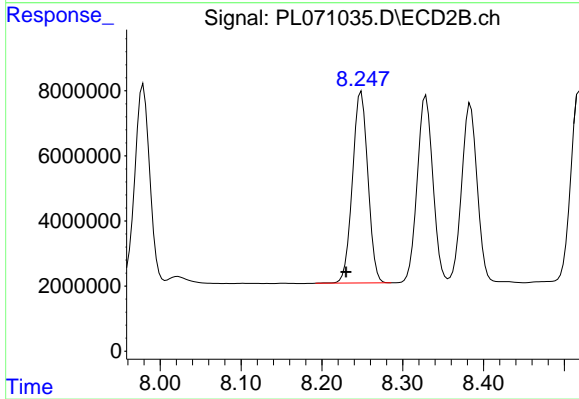
#9 Endosulfan I

R.T.: 8.384 min
Delta R.T.: 0.019 min
Response: 72706267
Conc: 50.54 ng/ml



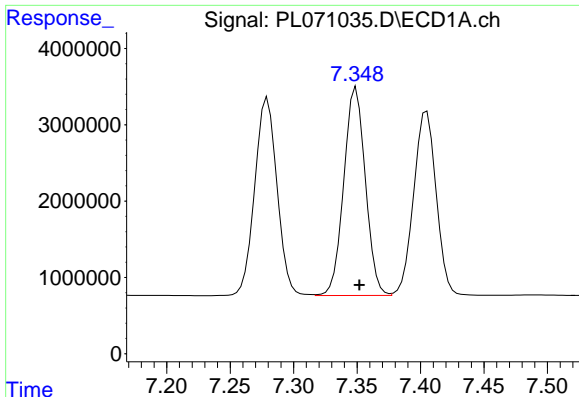
#10 gamma-Chlordane

R.T.: 7.279 min
Delta R.T.: -0.003 min
Response: 31697973
Conc: 47.75 ng/ml



#10 gamma-Chlordane

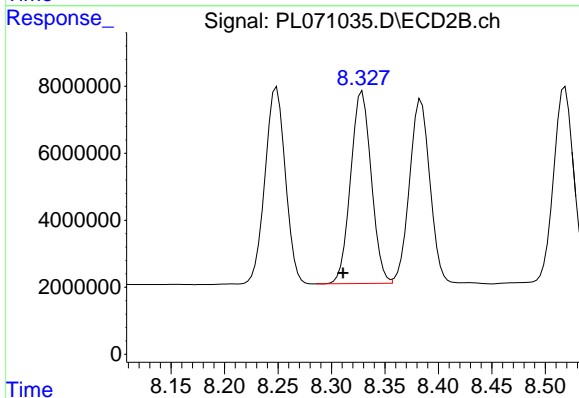
R.T.: 8.249 min
Delta R.T.: 0.019 min
Response: 78013024
Conc: 50.38 ng/ml



#11 alpha-Chlordane

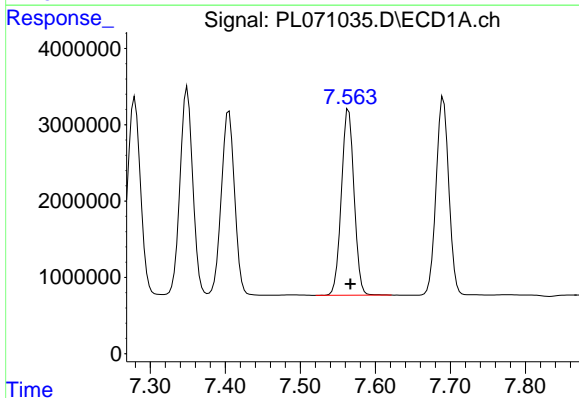
R.T.: 7.349 min
 Delta R.T.: -0.003 min
 Response: 32272699
 Conc: 48.43 ng/ml

Instrument :
 ECD_L
 ClientSampleId :
 TP-2-COMPMSD



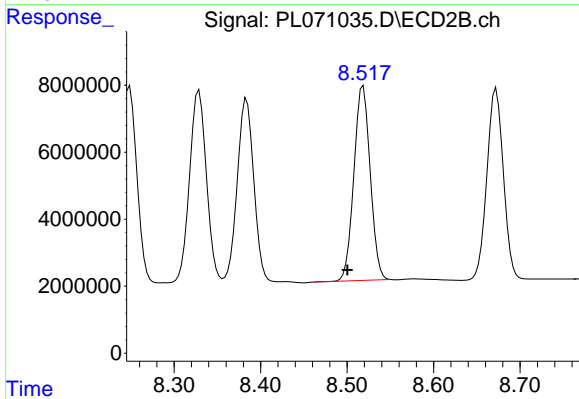
#11 alpha-Chlordane

R.T.: 8.329 min
 Delta R.T.: 0.018 min
 Response: 77115598
 Conc: 50.70 ng/ml



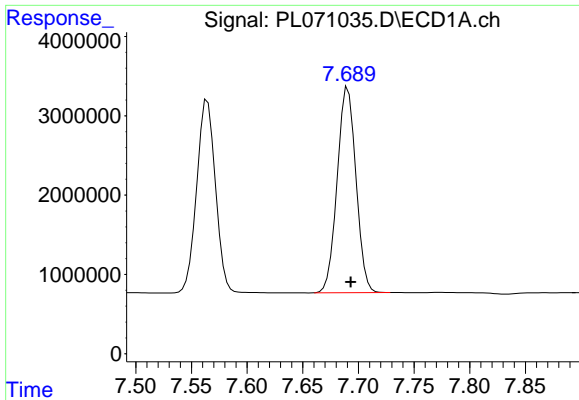
#12 4,4'-DDE

R.T.: 7.564 min
 Delta R.T.: -0.003 min
 Response: 28649658
 Conc: 49.17 ng/ml



#12 4,4'-DDE

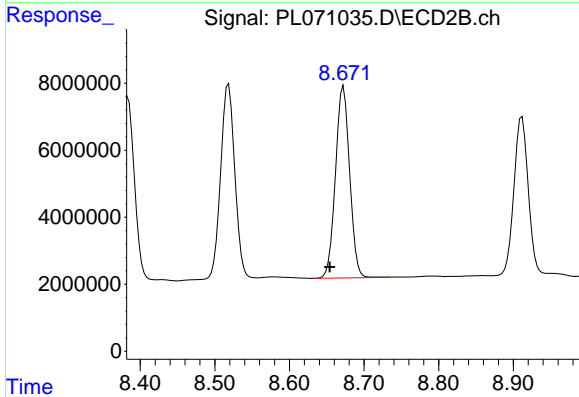
R.T.: 8.519 min
 Delta R.T.: 0.018 min
 Response: 76301705
 Conc: 51.71 ng/ml



#13 Dieldrin

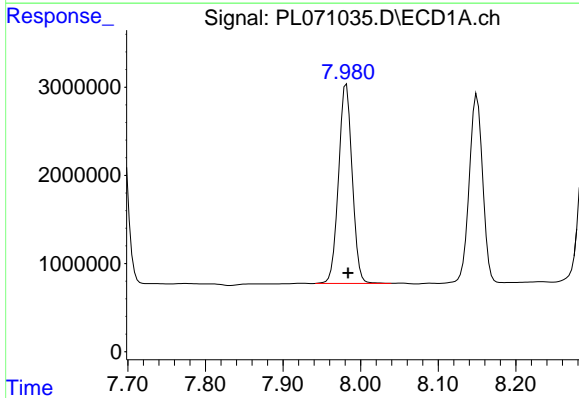
R.T.: 7.691 min
 Delta R.T.: -0.002 min
 Response: 30458606
 Conc: 48.80 ng/ml

Instrument :
 ECD_L
 ClientSampleId :
 TP-2-COMPMSD



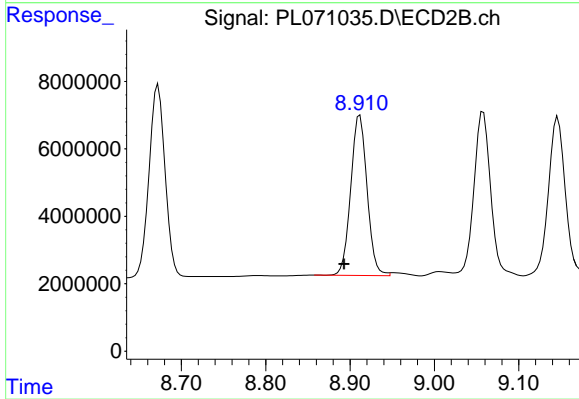
#13 Dieldrin

R.T.: 8.673 min
 Delta R.T.: 0.018 min
 Response: 75650712
 Conc: 51.92 ng/ml



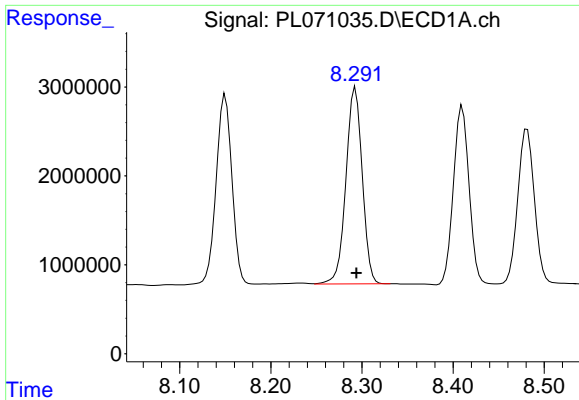
#14 Endrin

R.T.: 7.982 min
 Delta R.T.: -0.002 min
 Response: 27643444
 Conc: 48.76 ng/ml



#14 Endrin

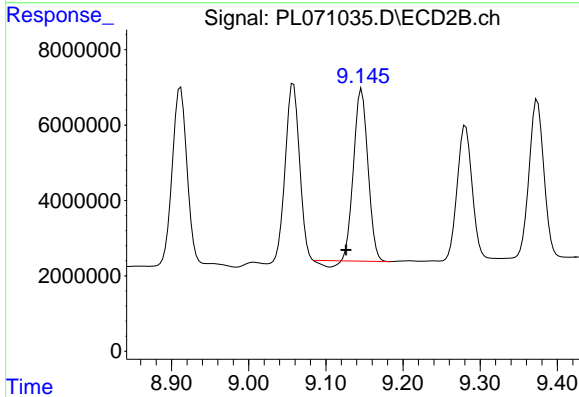
R.T.: 8.912 min
 Delta R.T.: 0.019 min
 Response: 63941340
 Conc: 55.20 ng/ml



#15 Endosulfan II

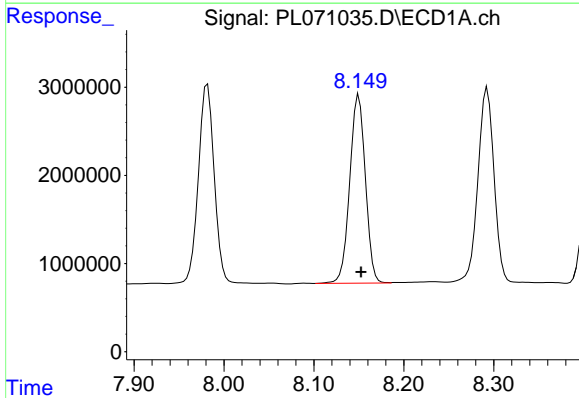
R.T.: 8.293 min
 Delta R.T.: -0.001 min
 Response: 27500171
 Conc: 45.43 ng/ml

Instrument :
 ECD_L
 ClientSampleId :
 TP-2-COMPMSD



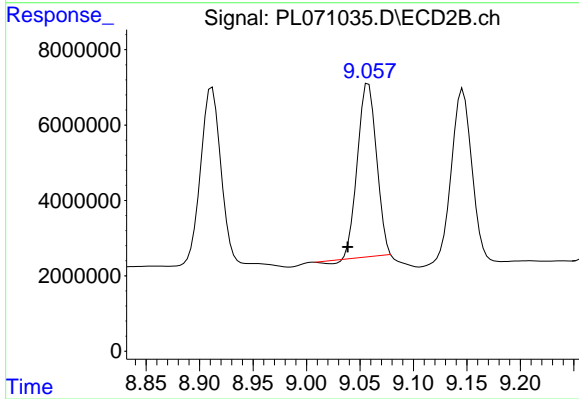
#15 Endosulfan II

R.T.: 9.146 min
 Delta R.T.: 0.020 min
 Response: 57720003
 Conc: 47.26 ng/ml



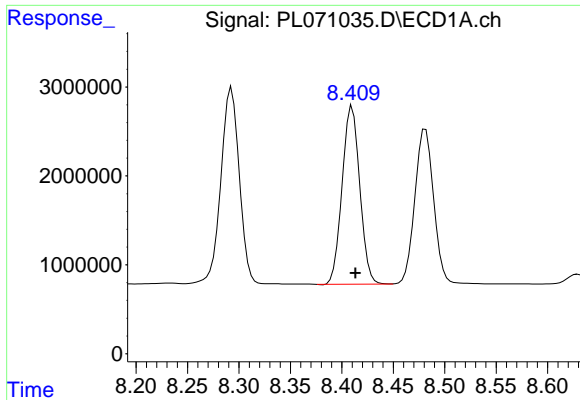
#16 4,4'-DDD

R.T.: 8.150 min
 Delta R.T.: -0.002 min
 Response: 25761735
 Conc: 50.70 ng/ml



#16 4,4'-DDD

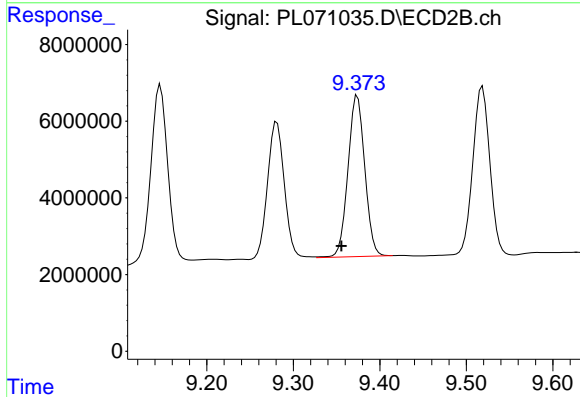
R.T.: 9.058 min
 Delta R.T.: 0.019 min
 Response: 56758055
 Conc: 47.16 ng/ml



#17 4,4'-DDT

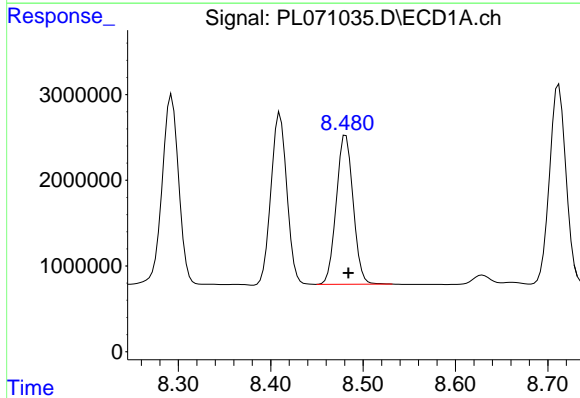
R.T.: 8.410 min
 Delta R.T.: -0.003 min
 Response: 23885200
 Conc: 43.43 ng/ml

Instrument :
 ECD_L
 ClientSampleId :
 TP-2-COMPMSD



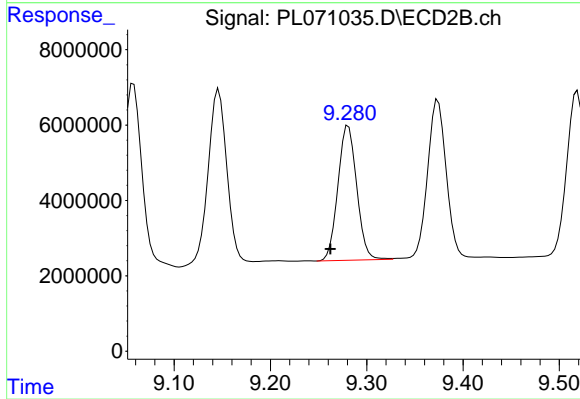
#17 4,4'-DDT

R.T.: 9.374 min
 Delta R.T.: 0.018 min
 Response: 56468386
 Conc: 44.76 ng/ml



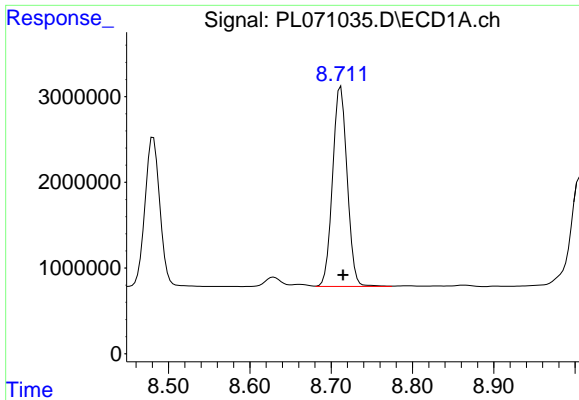
#18 Endrin aldehyde

R.T.: 8.481 min
 Delta R.T.: -0.003 min
 Response: 22070872
 Conc: 48.58 ng/ml



#18 Endrin aldehyde

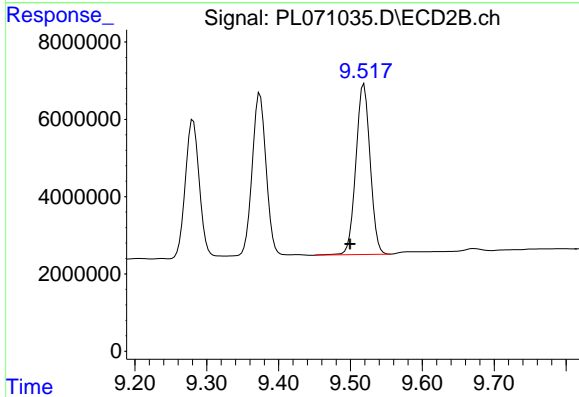
R.T.: 9.281 min
 Delta R.T.: 0.019 min
 Response: 48385355
 Conc: 50.03 ng/ml



#19 Endosulfan Sulfate

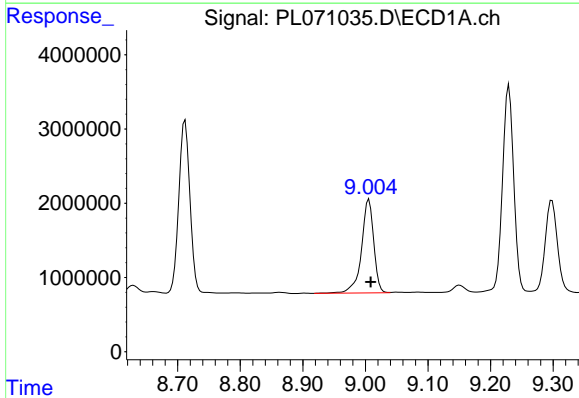
R.T.: 8.712 min
 Delta R.T.: -0.003 min
 Response: 29094283
 Conc: 47.16 ng/ml

Instrument :
 ECD_L
 ClientSampleId :
 TP-2-COMPMSD



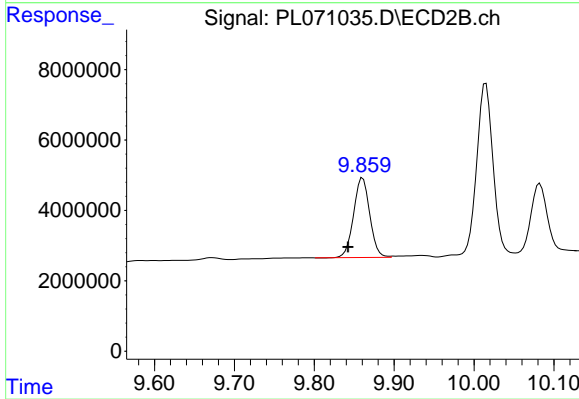
#19 Endosulfan Sulfate

R.T.: 9.519 min
 Delta R.T.: 0.019 min
 Response: 60686074
 Conc: 48.96 ng/ml



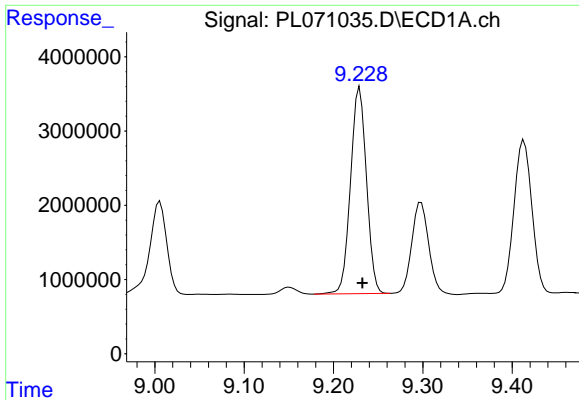
#20 Methoxychlor

R.T.: 9.006 min
 Delta R.T.: -0.003 min
 Response: 17133569
 Conc: 46.83 ng/ml



#20 Methoxychlor

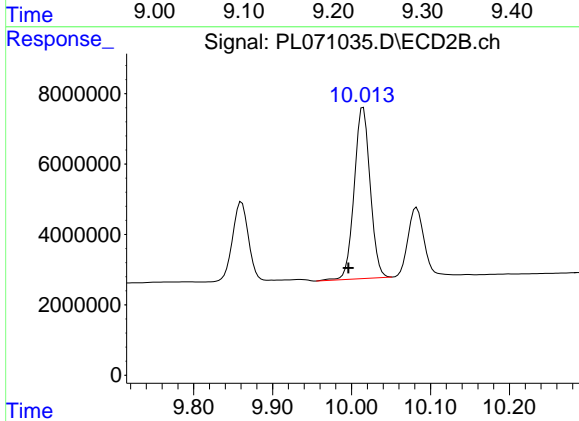
R.T.: 9.861 min
 Delta R.T.: 0.018 min
 Response: 31891663
 Conc: 47.12 ng/ml



#21 Endrin ketone

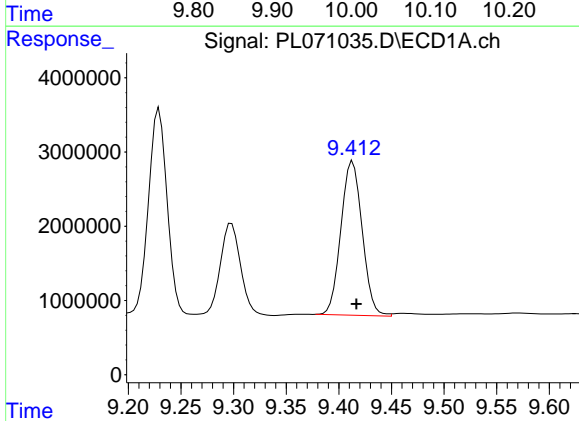
R.T.: 9.229 min
 Delta R.T.: -0.003 min
 Response: 34438047
 Conc: 48.16 ng/ml

Instrument :
 ECD_L
 ClientSampleId :
 TP-2-COMPMSD



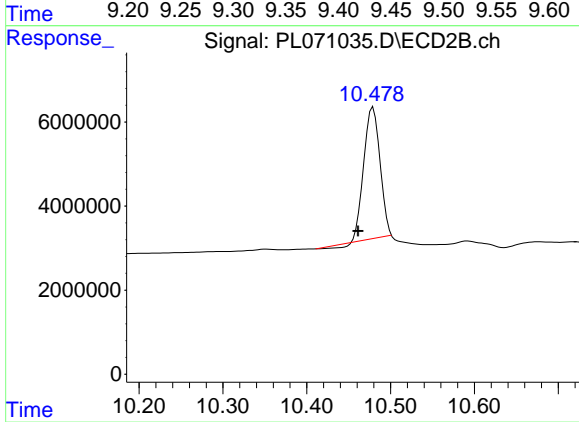
#21 Endrin ketone

R.T.: 10.015 min
 Delta R.T.: 0.019 min
 Response: 68420052
 Conc: 47.66 ng/ml



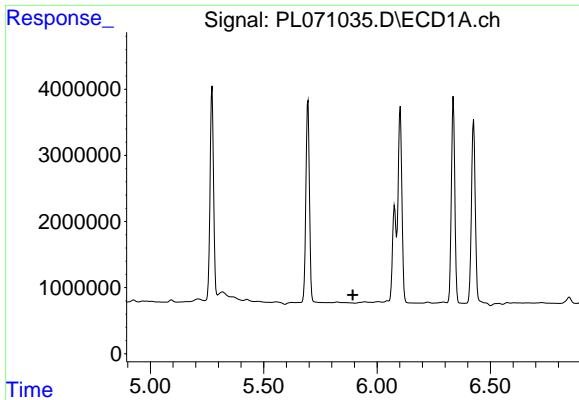
#22 Mirex

R.T.: 9.413 min
 Delta R.T.: -0.004 min
 Response: 29354697
 Conc: 47.80 ng/ml



#22 Mirex

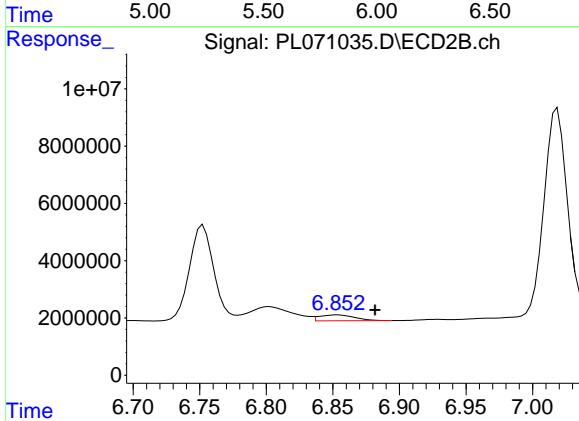
R.T.: 10.479 min
 Delta R.T.: 0.018 min
 Response: 41525482
 Conc: 39.87 ng/ml



#23 Chlordane-1

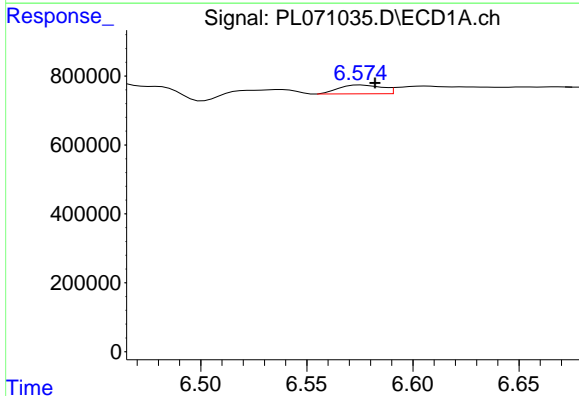
R.T.: 0.000 min
 Exp R.T.: 5.893 min
 Response: 0
 Conc: N.D.

Instrument :
 ECD_L
 ClientSampleId :
 TP-2-COMPMSD



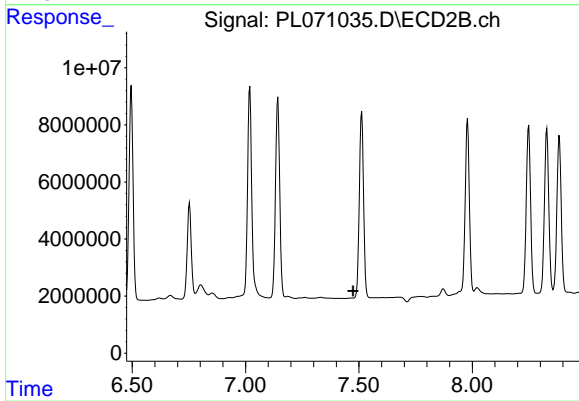
#23 Chlordane-1

R.T.: 6.854 min
 Delta R.T.: -0.028 min
 Response: 3729177
 Conc: 76.80 ng/ml



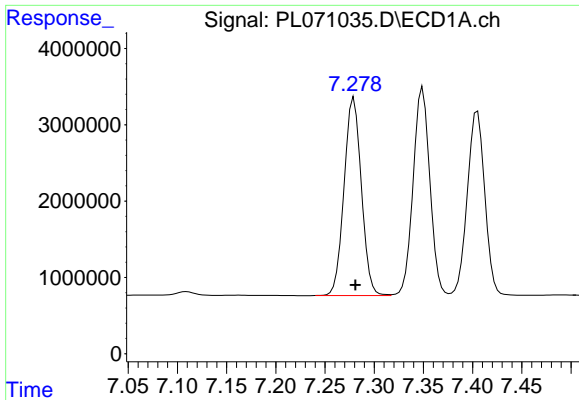
#24 Chlordane-2

R.T.: 6.575 min
 Delta R.T.: -0.007 min
 Response: 360190
 Conc: 15.69 ng/ml



#24 Chlordane-2

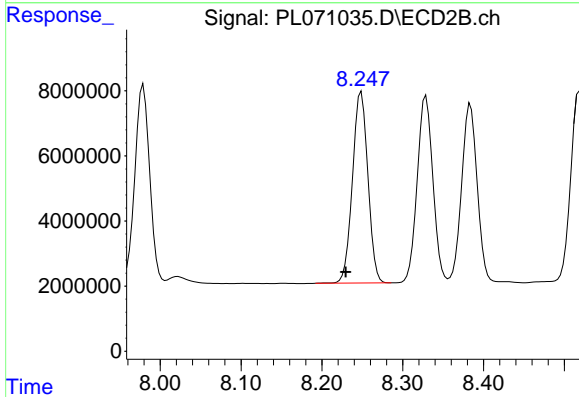
R.T.: 0.000 min
 Exp R.T.: 7.474 min
 Response: 0
 Conc: N.D.



#25 Chlordane-3

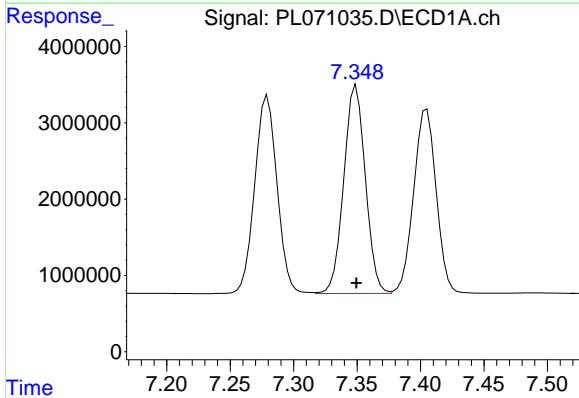
R.T.: 7.279 min
Delta R.T.: -0.002 min
Response: 31697973
Conc: 519.19 ng/ml

Instrument :
ECD_L
ClientSampleId :
TP-2-COMPMSD



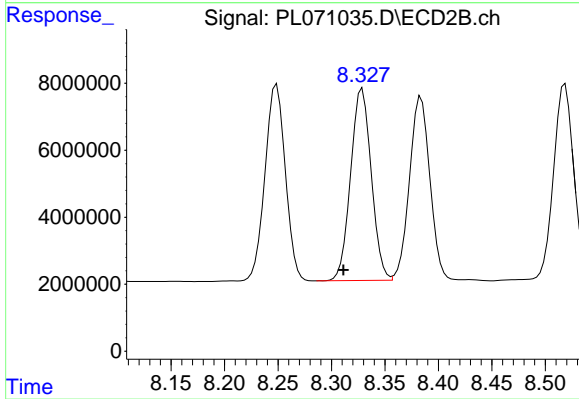
#25 Chlordane-3

R.T.: 8.249 min
Delta R.T.: 0.019 min
Response: 78013024
Conc: 385.96 ng/ml



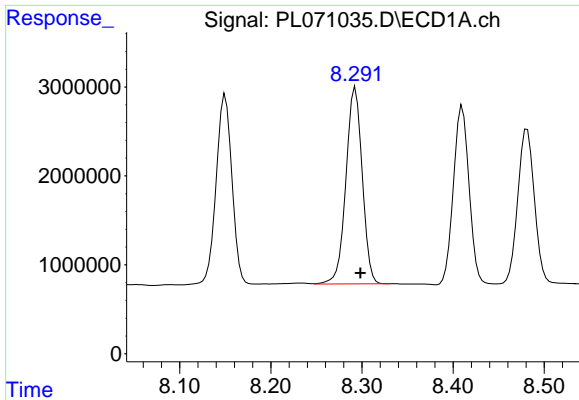
#26 Chlordane-4

R.T.: 7.349 min
Delta R.T.: 0.000 min
Response: 32272699
Conc: 491.58 ng/ml



#26 Chlordane-4

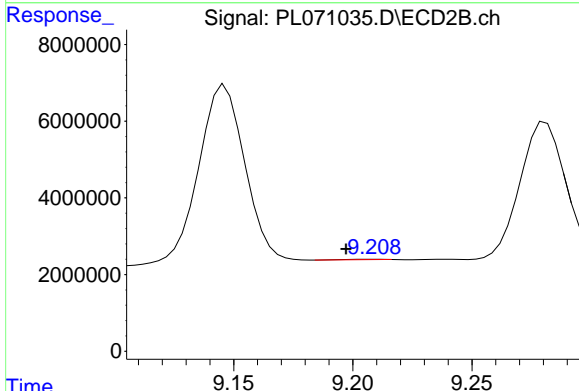
R.T.: 8.329 min
Delta R.T.: 0.018 min
Response: 77115598
Conc: 317.78 ng/ml



#27 Chlordane-5

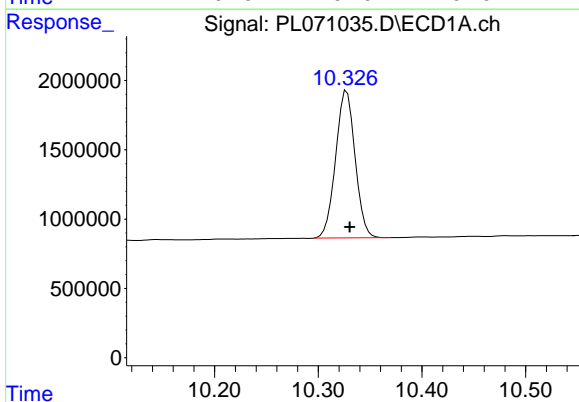
R.T.: 8.293 min
 Delta R.T.: -0.005 min
 Response: 27500171
 Conc: 1230.00 ng/m

Instrument :
 ECD_L
 ClientSampleId :
 TP-2-COMPMSD



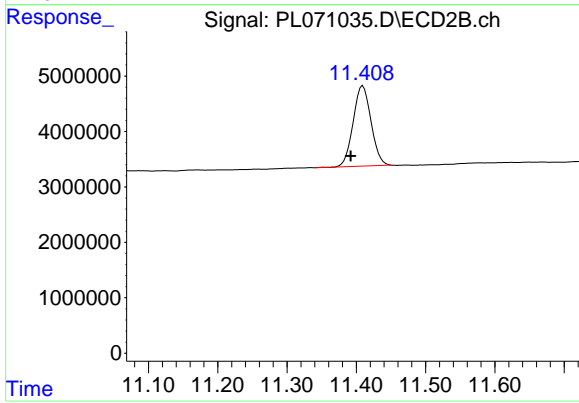
#27 Chlordane-5

R.T.: 9.209 min
 Delta R.T.: 0.012 min
 Response: 97723
 Conc: 2.36 ng/ml



#28 Decachlorobiphenyl

R.T.: 10.328 min
 Delta R.T.: -0.003 min
 Response: 13846045
 Conc: 20.26 ng/ml



#28 Decachlorobiphenyl

R.T.: 11.409 min
 Delta R.T.: 0.018 min
 Response: 26024944
 Conc: 19.46 ng/ml