

Data Path : Z:\pestpcbsrv\HPCHEM1\ECD_L\Data\PL111822\
 Data File : PL079255.D
 Signal(s) : Signal #1: ECD1A.ch Signal #2: ECD2B.ch
 Acq On : 18 Nov 2022 19:42
 Operator : AR\AJ
 Sample : N5598-13
 Misc :
 ALS Vial : 23 Sample Multiplier: 1

Instrument :
 ECD_L
 ClientSampleId :

Integration File signal 1: autoint1.e
 Integration File signal 2: autoint2.e
 Quant Time: Nov 19 08:28:17 2022
 Quant Method : Z:\pestpcbsrv\HPCHEM1\ECD_L\methods\PL111622.M
 Quant Title : GC Extractables
 QLast Update : Wed Nov 16 15:31:11 2022
 Response via : Initial Calibration
 Integrator: ChemStation

Volume Inj. : 1 µl
 Signal #1 Phase : ZB-MR2 Signal #2 Phase: ZB-MR1
 Signal #1 Info : 30M x 0.32mm x0.2 Signal #2 Info : 30M x 0.32mm x0.5µm

	Compound	RT#1	RT#2	Resp#1	Resp#2	ng/ml	ng/ml

System Monitoring Compounds							
1)	SA Tetrachlo...	3.320	2.567	39127673	47768937	18.790	18.756
28)	SA Decachlor...	8.769	7.633	29738232	38092884	17.778	18.363
Target Compounds							
2)	A alpha-BHC	3.754f	0.000	1123147	0	0.356	N.D. #
3)	MA gamma-BHC...	4.135f	0.000	84420	0	0.028	N.D. #
4)	MA Heptachlor	0.000	3.673f	0	700536	N.D.	0.193 #
5)	MB Aldrin	0.000	3.957f	0	2613372	N.D.	0.748 #
6)	B beta-BHC	0.000	3.673	0	700536	N.D.	0.501 #
8)	B Heptachlo...	5.461	4.448f	2983011	1548160	1.262	0.499 #
9)	A Endosulfan I	5.842	4.830	2596301	1230905	1.081	0.417 #
10)	B gamma-Chl...	5.707	0.000	2376700	0	0.930	N.D. #
11)	B alpha-Chl...	0.000	4.791	0	1005985	N.D.	0.330 #
12)	B 4,4'-DDE	5.961	0.000	440617	0	0.193	N.D. #
13)	MA Dieldrin	0.000	5.084	0	879151	N.D.	0.286 #
14)	MA Endrin	0.000	5.389f	0	703342	N.D.	0.269 #
17)	MA 4,4'-DDT	6.825f	0.000	419463	0	0.201	N.D. #
19)	B Endosulfa...	0.000	6.058	0	290271	N.D.	0.111 #
20)	A Methoxychlor	7.298	0.000	373218	0	0.350	N.D. #
23)	Chlordane-1	0.000	3.556f	0	3155298	N.D.	30.540 #
24)	Chlordane-2	0.000	4.083f	0	4325975	N.D.	40.737 #
25)	Chlordane-3	5.707	0.000	2376700	0	6.170	N.D. #
26)	Chlordane-4	0.000	4.791	0	1005985	N.D.	2.932 #

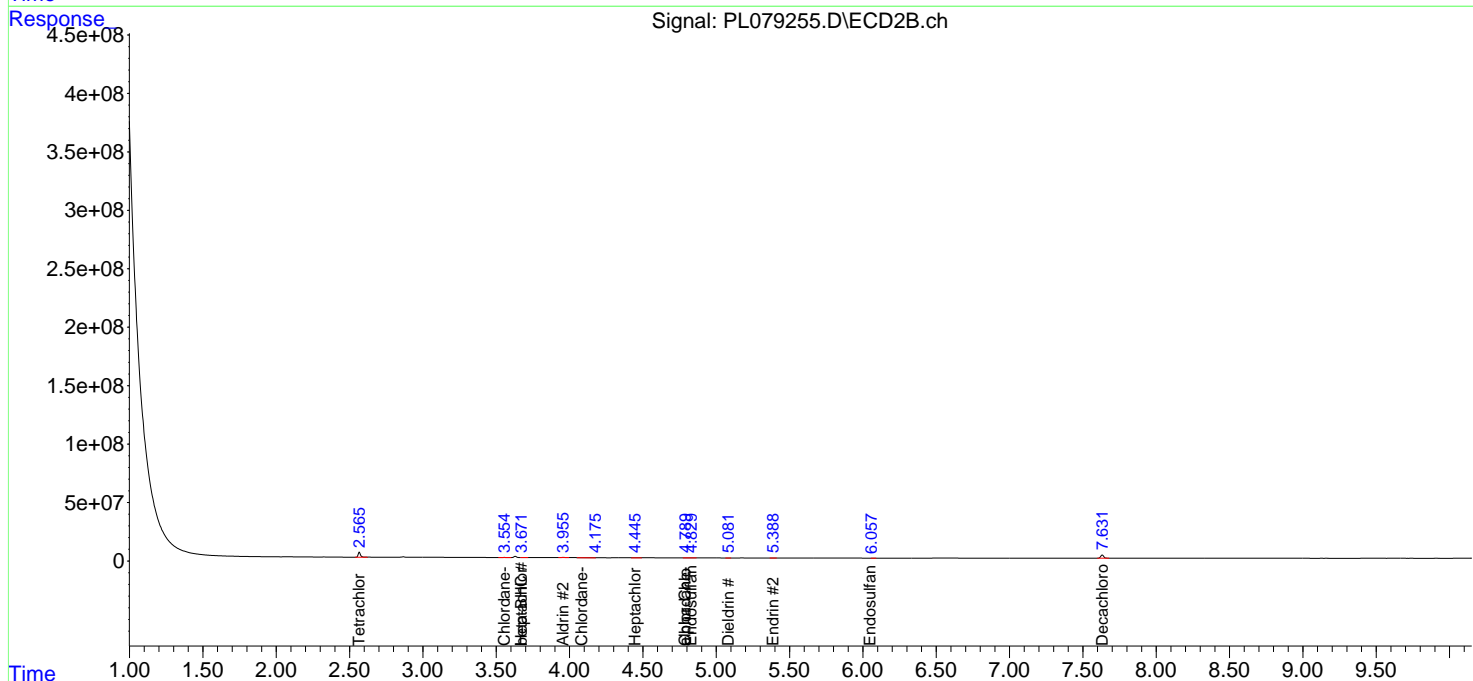
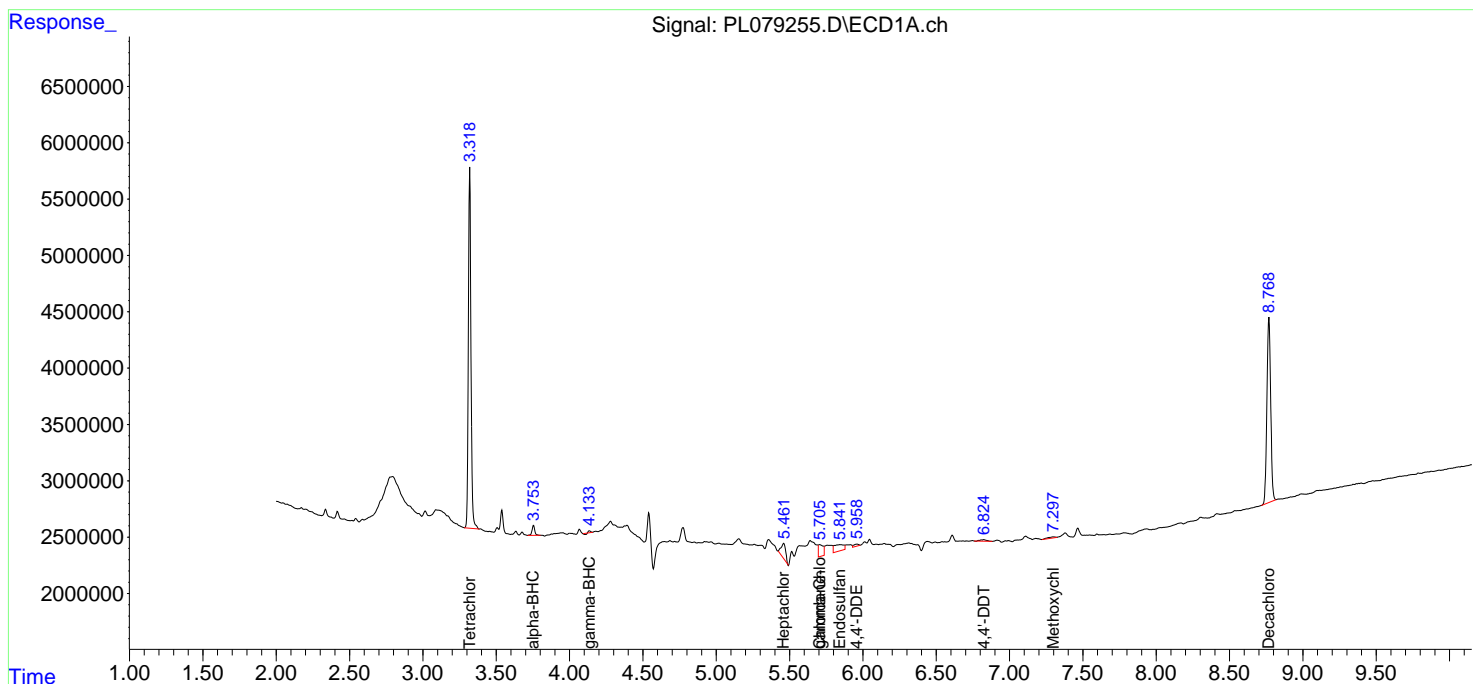
(f)=RT Delta > 1/2 Window (#)=Amounts differ by > 25% (m)=manual int.

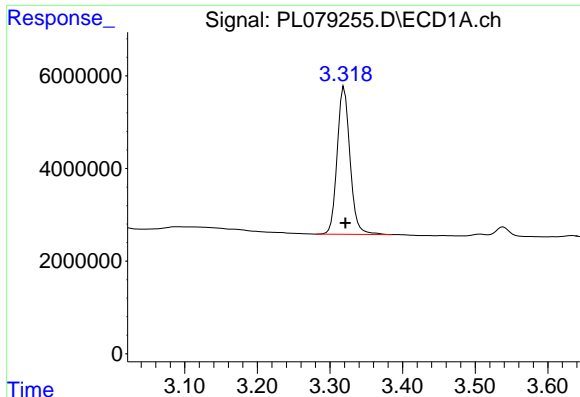
Data Path : Z:\pestpcbsrv\HPCHEM1\ECD_L\Data\PL111822\
 Data File : PL079255.D
 Signal(s) : Signal #1: ECD1A.ch Signal #2: ECD2B.ch
 Acq On : 18 Nov 2022 19:42
 Operator : AR\AJ
 Sample : N5598-13
 Misc :
 ALS Vial : 23 Sample Multiplier: 1

Instrument :
 ECD_L
 ClientSampleId :

Integration File signal 1: autoint1.e
 Integration File signal 2: autoint2.e
 Quant Time: Nov 19 08:28:17 2022
 Quant Method : Z:\pestpcbsrv\HPCHEM1\ECD_L\methods\PL111622.M
 Quant Title : GC Extractables
 QLast Update : Wed Nov 16 15:31:11 2022
 Response via : Initial Calibration
 Integrator: ChemStation

Volume Inj. : 1 µl
 Signal #1 Phase : ZB-MR2 Signal #2 Phase: ZB-MR1
 Signal #1 Info : 30M x 0.32mm x0.2 Signal #2 Info : 30M x 0.32mm x0.5µm

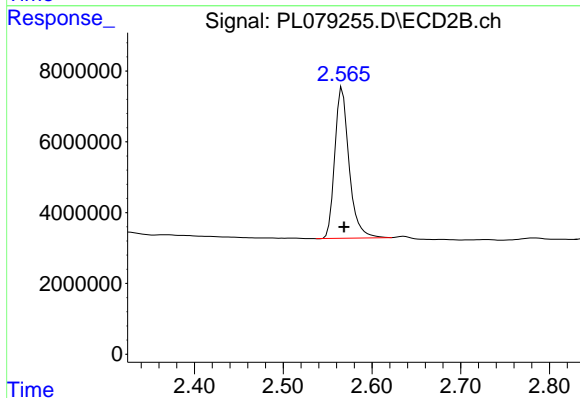




#1 Tetrachloro-m-xylene

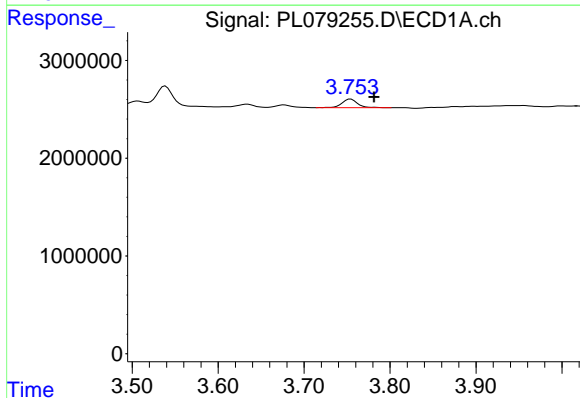
R.T.: 3.320 min
 Delta R.T.: -0.001 min
 Response: 39127673
 Conc: 18.79 ng/ml

Instrument :
 ECD_L
 ClientSampleId :



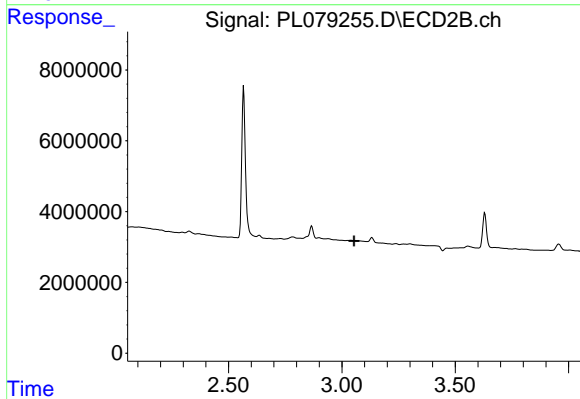
#1 Tetrachloro-m-xylene

R.T.: 2.567 min
 Delta R.T.: -0.002 min
 Response: 47768937
 Conc: 18.76 ng/ml



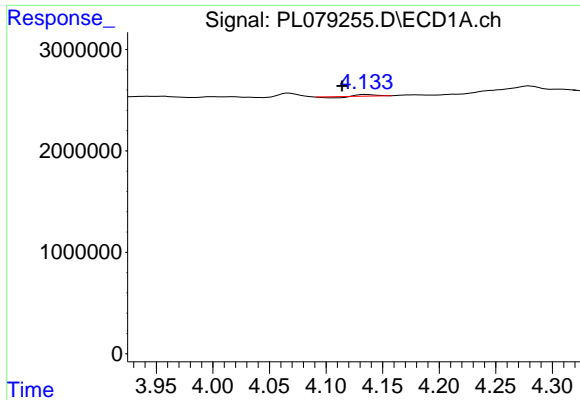
#2 alpha-BHC

R.T.: 3.754 min
 Delta R.T.: -0.027 min
 Response: 1123147
 Conc: 0.36 ng/ml



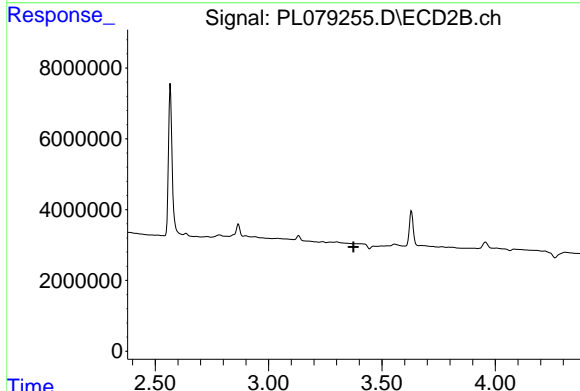
#2 alpha-BHC

R.T.: 0.000 min
 Exp R.T. : 3.055 min
 Response: 0
 Conc: N.D.

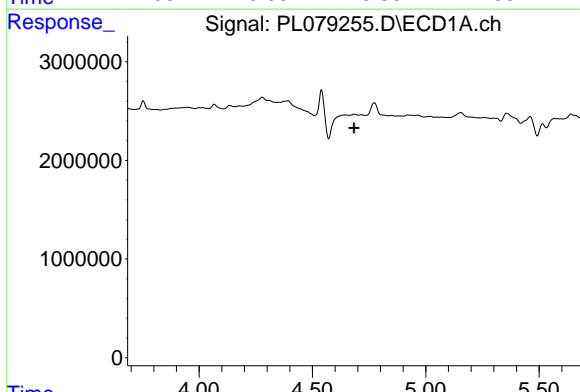


#3 gamma-BHC (Lindane)
 R.T.: 4.135 min
 Delta R.T.: 0.021 min
 Response: 84420
 Conc: 0.03 ng/ml

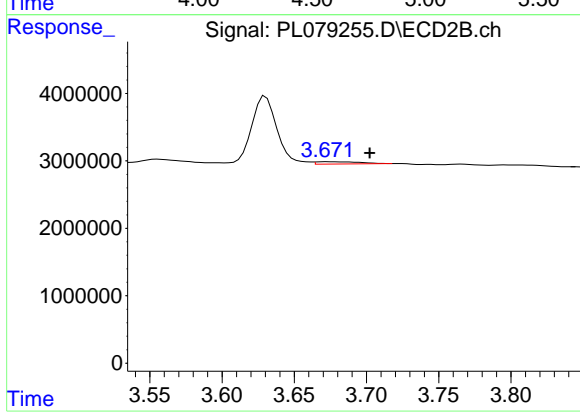
Instrument :
 ECD_L
 ClientSampleId :



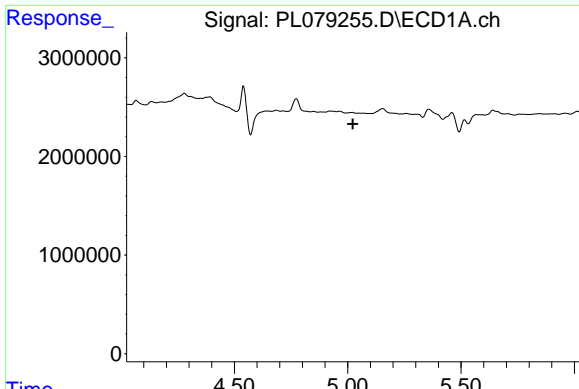
#3 gamma-BHC (Lindane)
 R.T.: 0.000 min
 Exp R.T. : 3.375 min
 Response: 0
 Conc: N.D.



#4 Heptachlor
 R.T.: 0.000 min
 Exp R.T. : 4.685 min
 Response: 0
 Conc: N.D.

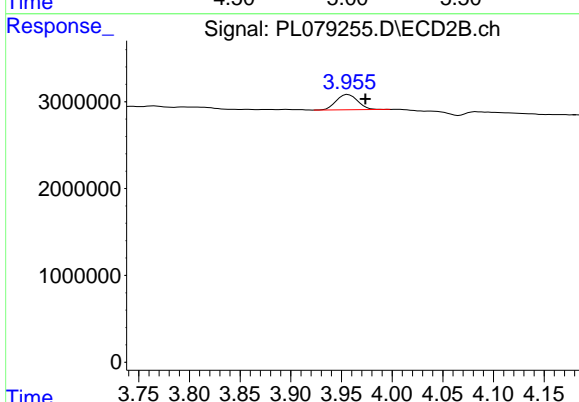


#4 Heptachlor
 R.T.: 3.673 min
 Delta R.T.: -0.029 min
 Response: 700536
 Conc: 0.19 ng/ml

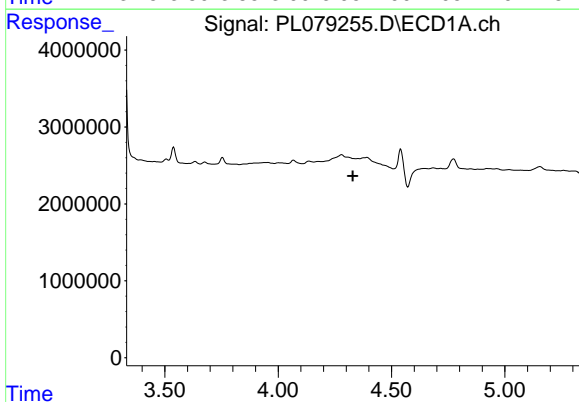


#5 Aldrin
 R.T.: 0.000 min
 Exp R.T.: 5.023 min
 Response: 0
 Conc: N.D.

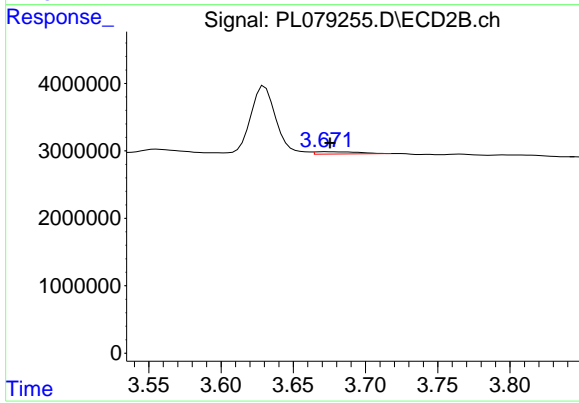
Instrument :
 ECD_L
 ClientSampleId :



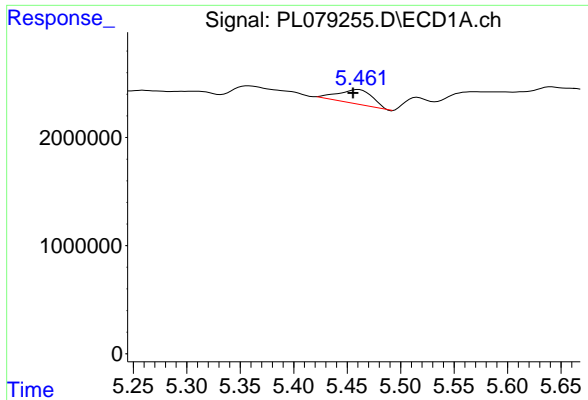
#5 Aldrin
 R.T.: 3.957 min
 Delta R.T.: -0.017 min
 Response: 2613372
 Conc: 0.75 ng/ml



#6 beta-BHC
 R.T.: 0.000 min
 Exp R.T.: 4.330 min
 Response: 0
 Conc: N.D.

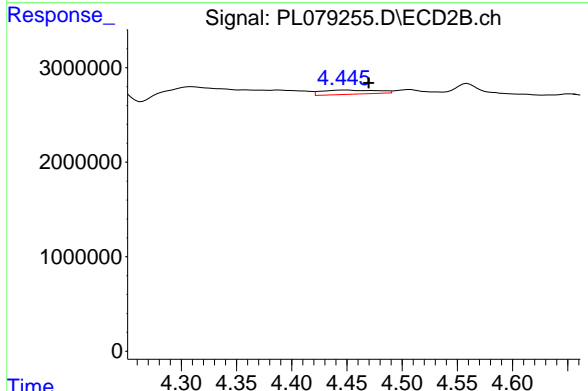


#6 beta-BHC
 R.T.: 3.673 min
 Delta R.T.: -0.002 min
 Response: 700536
 Conc: 0.50 ng/ml

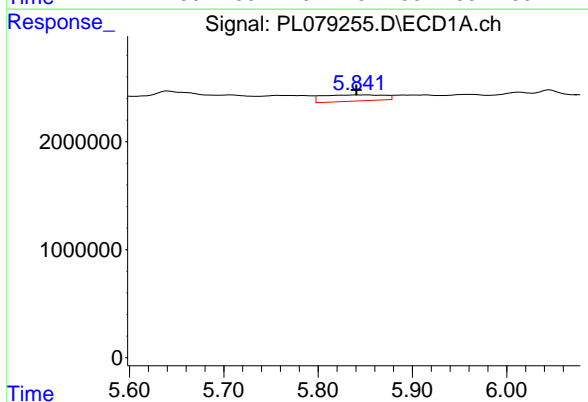


#8 Heptachlor epoxide
 R.T.: 5.461 min
 Delta R.T.: 0.005 min
 Response: 2983011
 Conc: 1.26 ng/ml

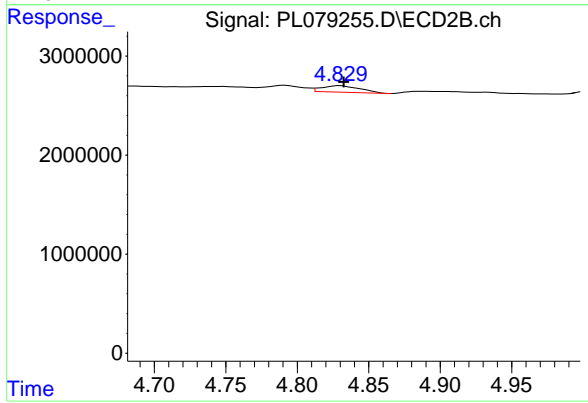
Instrument :
 ECD_L
 ClientSampleId :



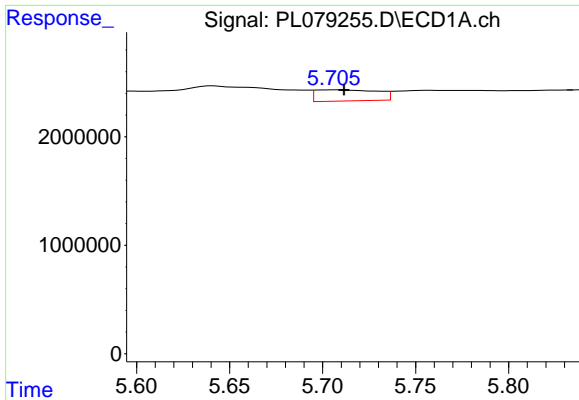
#8 Heptachlor epoxide
 R.T.: 4.448 min
 Delta R.T.: -0.022 min
 Response: 1548160
 Conc: 0.50 ng/ml



#9 Endosulfan I
 R.T.: 5.842 min
 Delta R.T.: 0.002 min
 Response: 2596301
 Conc: 1.08 ng/ml



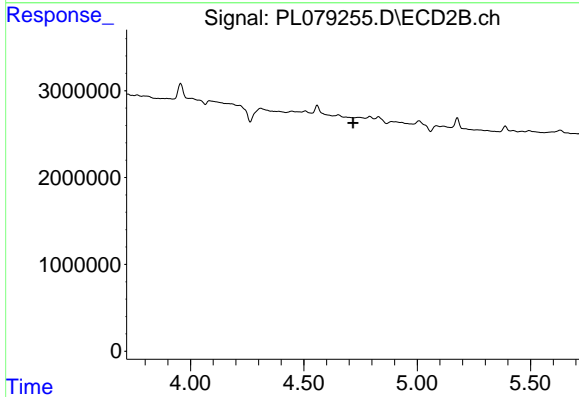
#9 Endosulfan I
 R.T.: 4.830 min
 Delta R.T.: -0.003 min
 Response: 1230905
 Conc: 0.42 ng/ml



#10 gamma-Chlordane

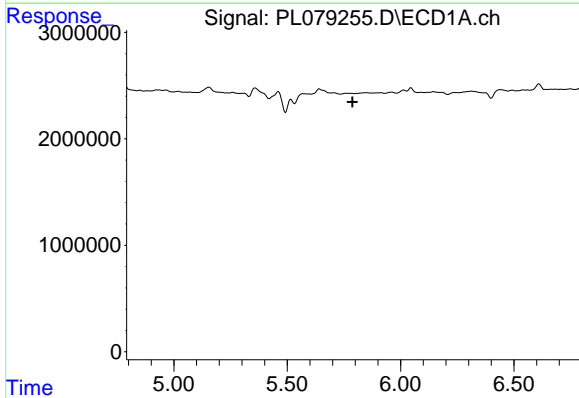
R.T.: 5.707 min
 Delta R.T.: -0.005 min
 Response: 2376700
 Conc: 0.93 ng/ml

Instrument :
 ECD_L
 ClientSampleId :



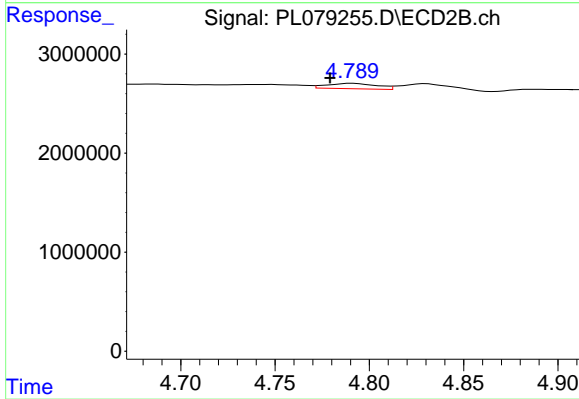
#10 gamma-Chlordane

R.T.: 0.000 min
 Exp R.T. : 4.718 min
 Response: 0
 Conc: N.D.



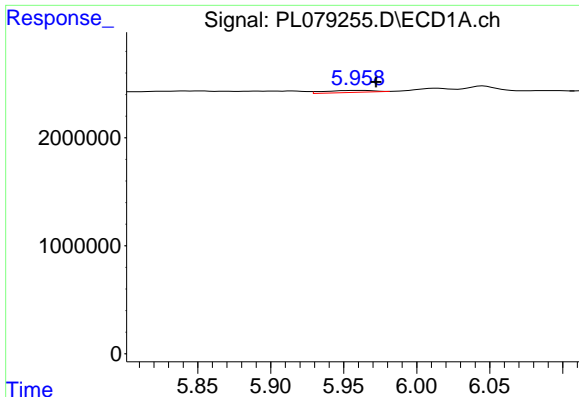
#11 alpha-Chlordane

R.T.: 0.000 min
 Exp R.T. : 5.788 min
 Response: 0
 Conc: N.D.



#11 alpha-Chlordane

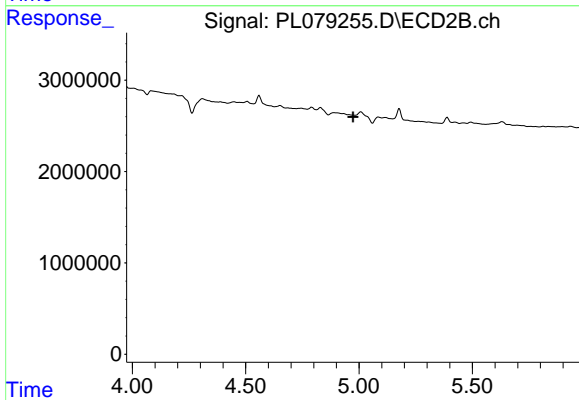
R.T.: 4.791 min
 Delta R.T.: 0.012 min
 Response: 1005985
 Conc: 0.33 ng/ml



#12 4,4'-DDE

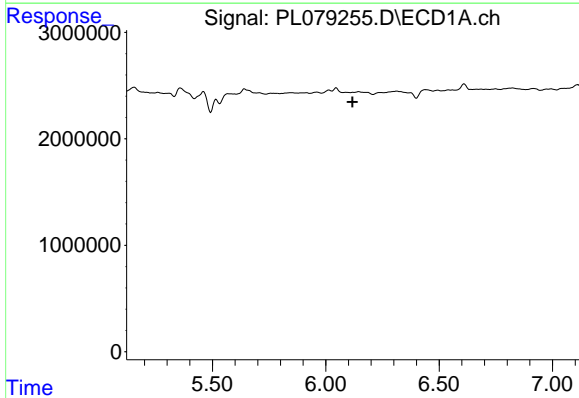
R.T.: 5.961 min
 Delta R.T.: -0.011 min
 Response: 440617
 Conc: 0.19 ng/ml

Instrument :
 ECD_L
 ClientSampleId :



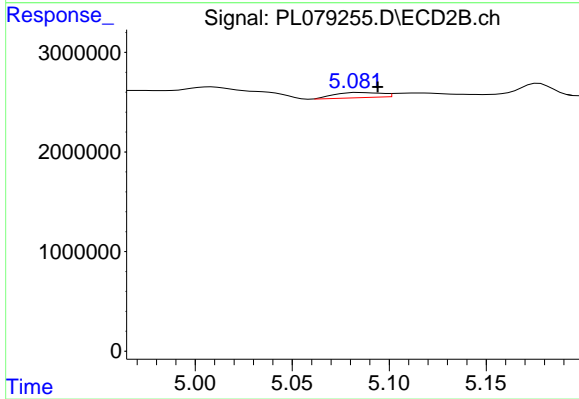
#12 4,4'-DDE

R.T.: 0.000 min
 Exp R.T. : 4.974 min
 Response: 0
 Conc: N.D.



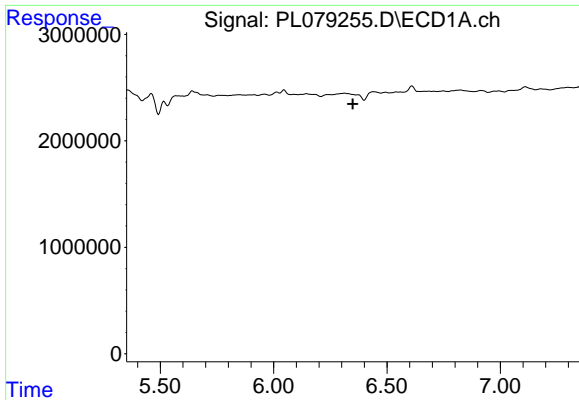
#13 Dieldrin

R.T.: 0.000 min
 Exp R.T. : 6.118 min
 Response: 0
 Conc: N.D.



#13 Dieldrin

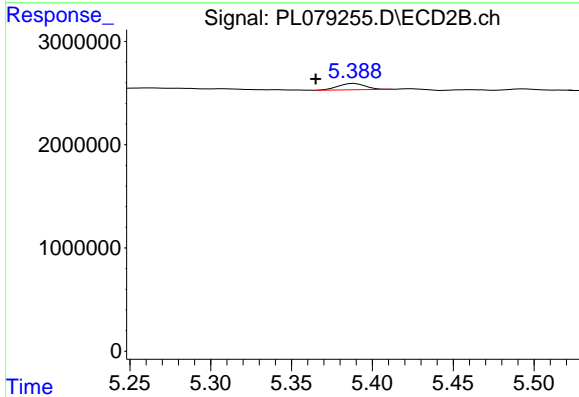
R.T.: 5.084 min
 Delta R.T.: -0.010 min
 Response: 879151
 Conc: 0.29 ng/ml



#14 Endrin

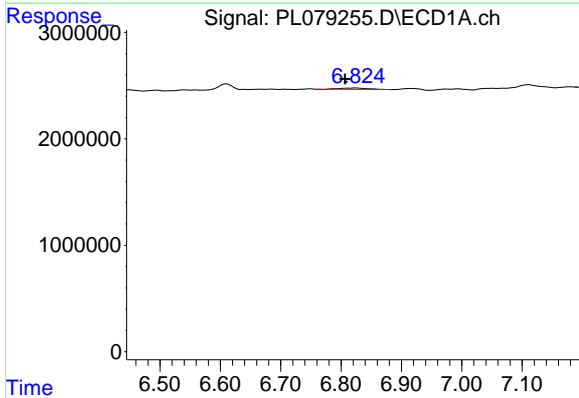
R.T.: 0.000 min
 Exp R.T.: 6.349 min
 Response: 0
 Conc: N.D.

Instrument :
 ECD_L
 ClientSampleId :



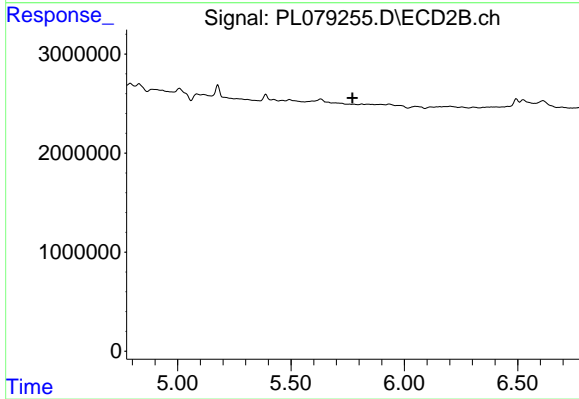
#14 Endrin

R.T.: 5.389 min
 Delta R.T.: 0.024 min
 Response: 703342
 Conc: 0.27 ng/ml



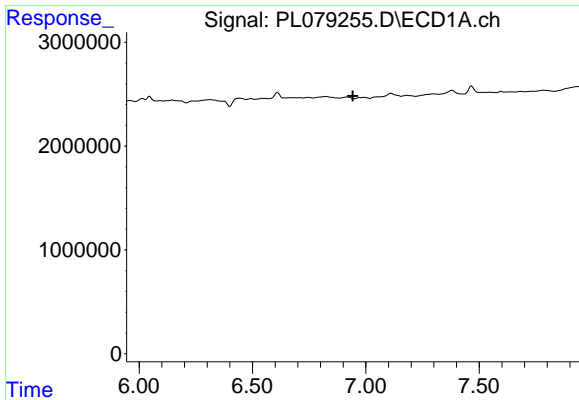
#17 4,4'-DDT

R.T.: 6.825 min
 Delta R.T.: 0.018 min
 Response: 419463
 Conc: 0.20 ng/ml



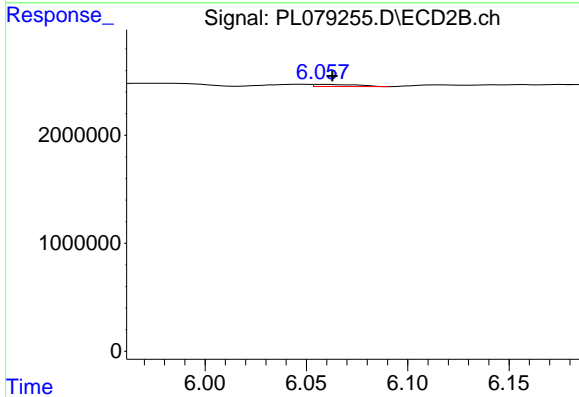
#17 4,4'-DDT

R.T.: 0.000 min
 Exp R.T.: 5.772 min
 Response: 0
 Conc: N.D.

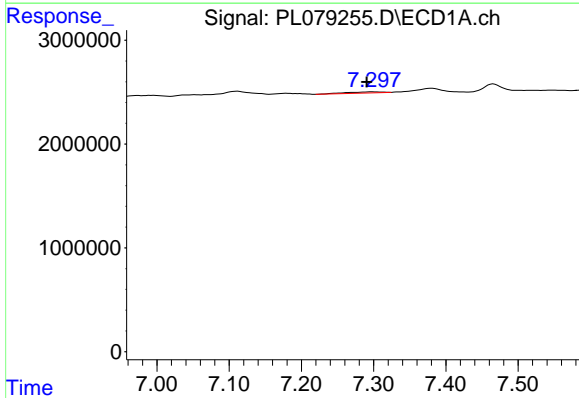


#19 Endosulfan Sulfate
 R.T.: 0.000 min
 Exp R.T.: 6.943 min
 Response: 0
 Conc: N.D.

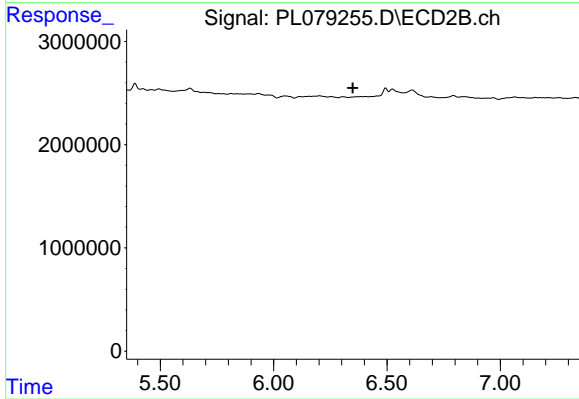
Instrument :
 ECD_L
 ClientSampleId :



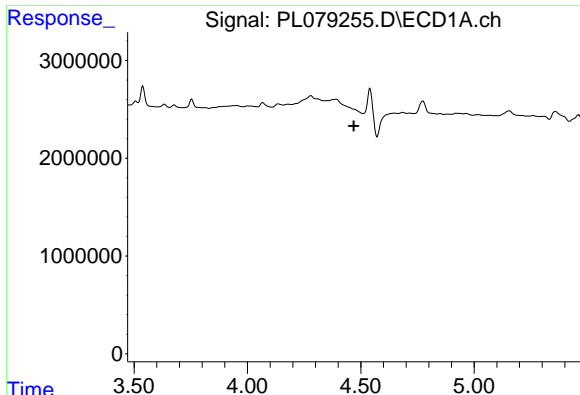
#19 Endosulfan Sulfate
 R.T.: 6.058 min
 Delta R.T.: -0.005 min
 Response: 290271
 Conc: 0.11 ng/ml



#20 Methoxychlor
 R.T.: 7.298 min
 Delta R.T.: 0.008 min
 Response: 373218
 Conc: 0.35 ng/ml



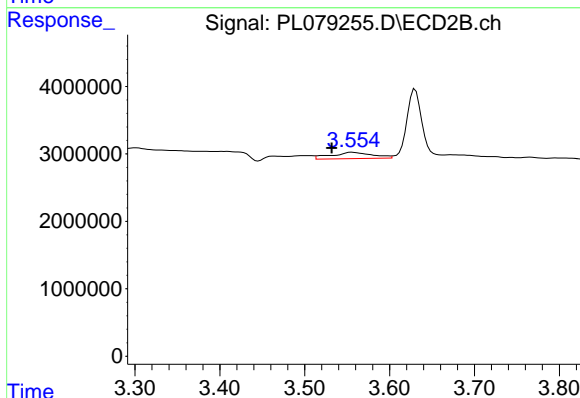
#20 Methoxychlor
 R.T.: 0.000 min
 Exp R.T.: 6.349 min
 Response: 0
 Conc: N.D.



#23 Chlordane-1

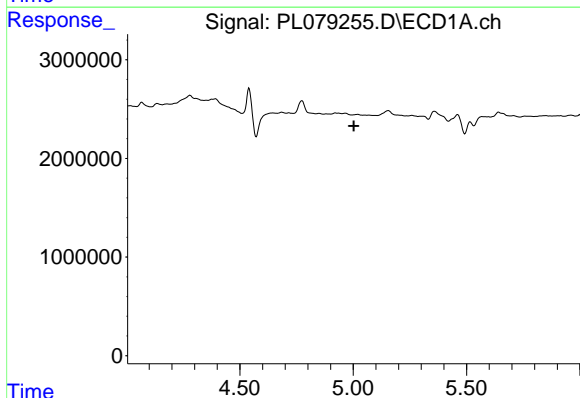
R.T.: 0.000 min
 Exp R.T. : 4.469 min
 Response: 0
 Conc: N.D.

Instrument :
 ECD_L
 ClientSampleId :



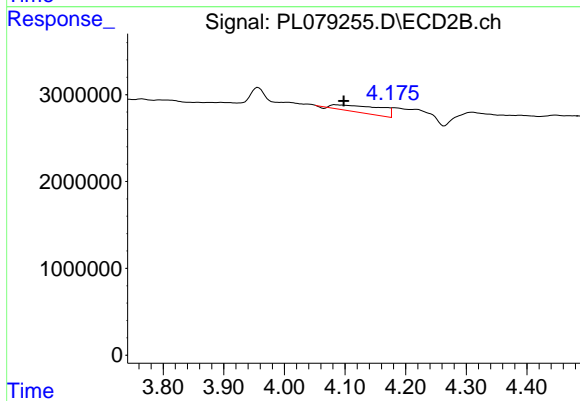
#23 Chlordane-1

R.T.: 3.556 min
 Delta R.T.: 0.024 min
 Response: 3155298
 Conc: 30.54 ng/ml



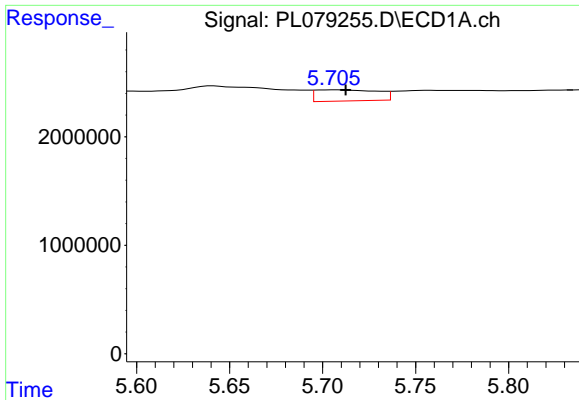
#24 Chlordane-2

R.T.: 0.000 min
 Exp R.T. : 5.002 min
 Response: 0
 Conc: N.D.



#24 Chlordane-2

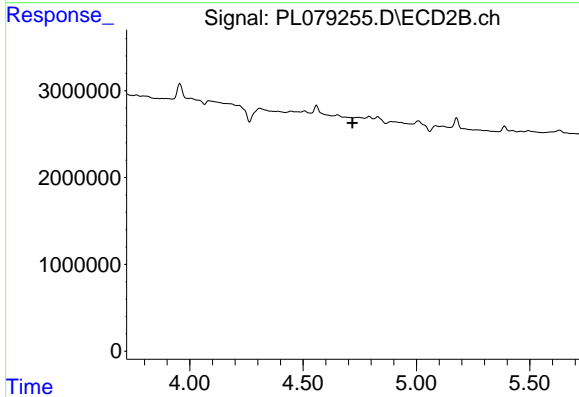
R.T.: 4.083 min
 Delta R.T.: -0.015 min
 Response: 4325975
 Conc: 40.74 ng/ml



#25 Chlordane-3

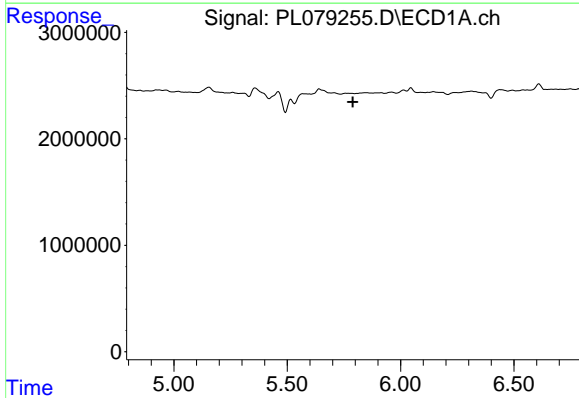
R.T.: 5.707 min
 Delta R.T.: -0.005 min
 Response: 2376700
 Conc: 6.17 ng/ml

Instrument :
 ECD_L
 ClientSampleId :



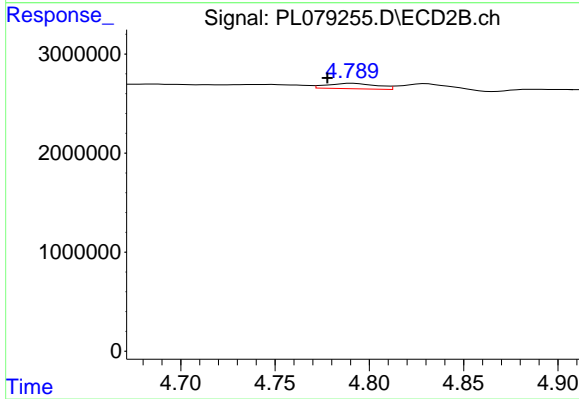
#25 Chlordane-3

R.T.: 0.000 min
 Exp R.T. : 4.718 min
 Response: 0
 Conc: N.D.



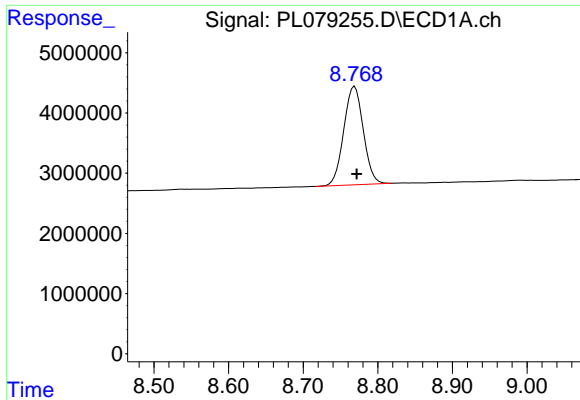
#26 Chlordane-4

R.T.: 0.000 min
 Exp R.T. : 5.790 min
 Response: 0
 Conc: N.D.



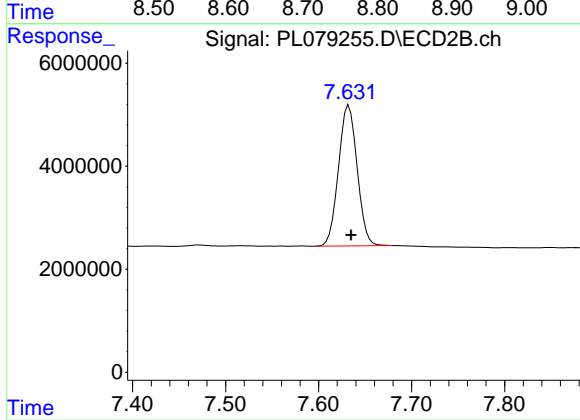
#26 Chlordane-4

R.T.: 4.791 min
 Delta R.T.: 0.013 min
 Response: 1005985
 Conc: 2.93 ng/ml



#28 Decachlorobiphenyl
R.T.: 8.769 min
Delta R.T.: -0.003 min
Response: 29738232
Conc: 17.78 ng/ml

Instrument :
ECD_L
ClientSampleId :



#28 Decachlorobiphenyl
R.T.: 7.633 min
Delta R.T.: -0.002 min
Response: 38092884
Conc: 18.36 ng/ml