

Data Path : Z:\pestpcbsrv\HPCHEM1\ECD_L\Data\PL111924\
 Data File : PL093160.D
 Signal(s) : Signal #1: ECD1A.ch Signal #2: ECD2B.ch
 Acq On : 19 Nov 2024 18:41
 Operator : AR\AJ
 Sample : P4909-01
 Misc :
 ALS Vial : 24 Sample Multiplier: 1

Instrument :
 ECD_L
ClientSampleId :
 BU-02-111824

Manual Integrations
APPROVED
 Reviewed By :Yogesh Patel 11/20/2024
 Supervised By :Ankita Jodhani 11/20/2024

Integration File signal 1: autoint1.e
 Integration File signal 2: autoint2.e
 Quant Time: Nov 19 23:19:13 2024
 Quant Method : Z:\pestpcbsrv\HPCHEM1\ECD_L\methods\PL102824.M
 Quant Title : GC Extractables
 QLast Update : Mon Oct 28 18:58:23 2024
 Response via : Initial Calibration
 Integrator: ChemStation

Volume Inj. : 1 µl
 Signal #1 Phase : ZB-MR2 Signal #2 Phase: ZB-MR1
 Signal #1 Info : 30M x 0.32mm x0.2 Signal #2 Info : 30M x 0.32mm x0.5µm

Compound	RT#1	RT#2	Resp#1	Resp#2	ng/ml	ng/ml

System Monitoring Compounds						
1) SA Tetrachlo...	3.535	2.773	31682794	33734893	12.931	12.397
28) SA Decachlor...	9.054	7.913	21875292	37923738	11.366	13.895
Target Compounds						
10) B gamma-Chl...	5.936	4.978	4469159	3572018	1.680	1.063m#
11) B alpha-Chl...	6.020	5.041	13153758	8540871	4.967	2.568 #
12) B 4,4'-DDE	6.189	5.230	20133018	26715947	8.498	8.293
14) MA Endrin	6.569	5.645	798246	1962410	0.351m	0.678m#
16) A 4,4'-DDD	6.713	5.785	1557803	967038	0.812m	0.388 #
17) MA 4,4'-DDT	7.019	6.033	4577374	8141221	2.212m	3.035m#

(f)=RT Delta > 1/2 Window (#)=Amounts differ by > 25% (m)=manual int.

Data Path : Z:\pestpcbsrv\HPCHEM1\ECD_L\Data\PL111924\
 Data File : PL093160.D
 Signal(s) : Signal #1: ECD1A.ch Signal #2: ECD2B.ch
 Acq On : 19 Nov 2024 18:41
 Operator : AR\AJ
 Sample : P4909-01
 Misc :
 ALS Vial : 24 Sample Multiplier: 1

Instrument :

ECD_L

ClientSampleId :

BU-02-111824

Manual Integrations

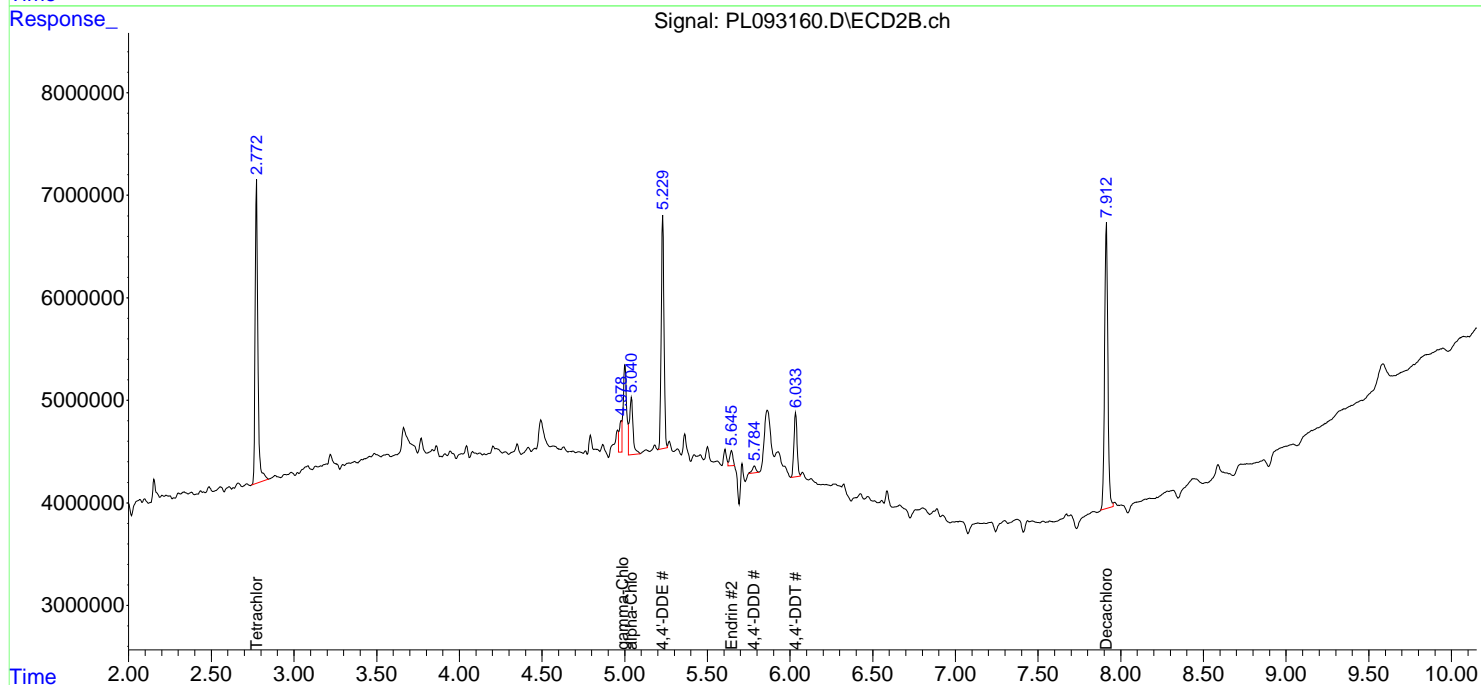
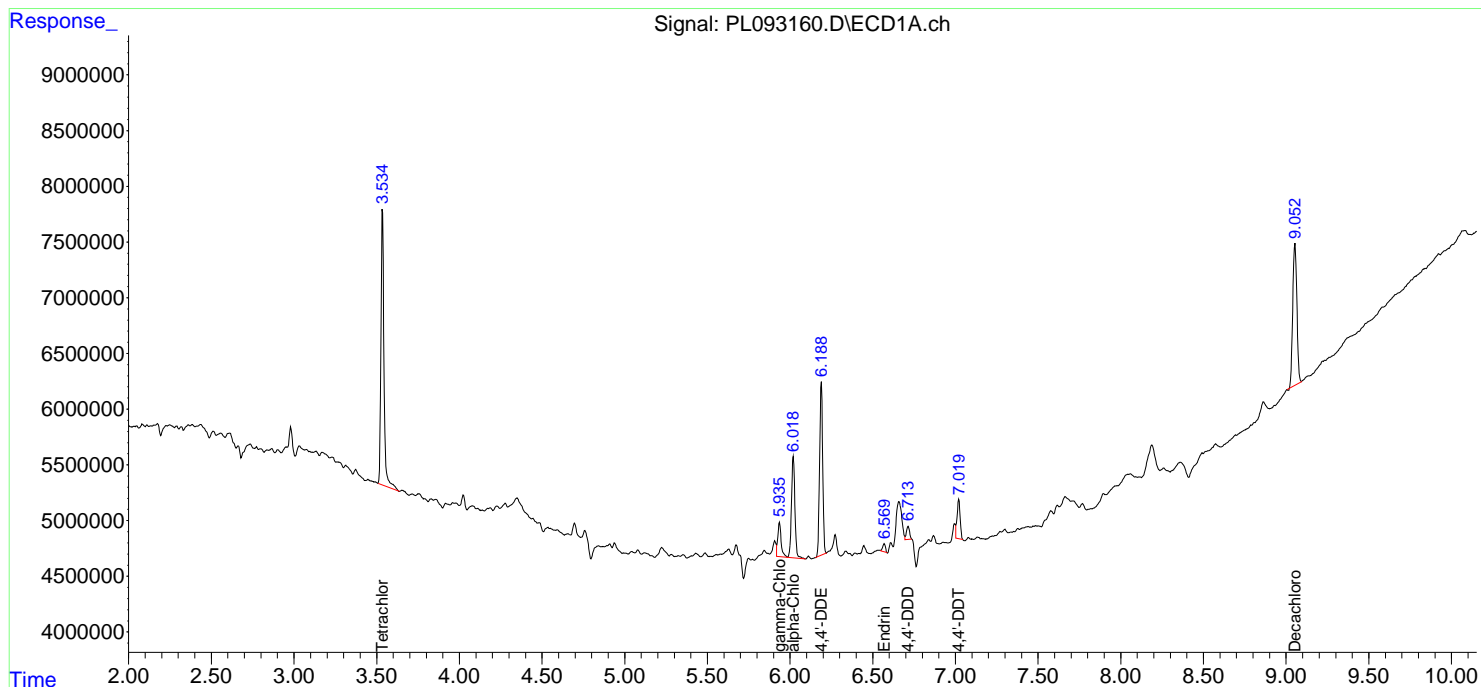
APPROVED

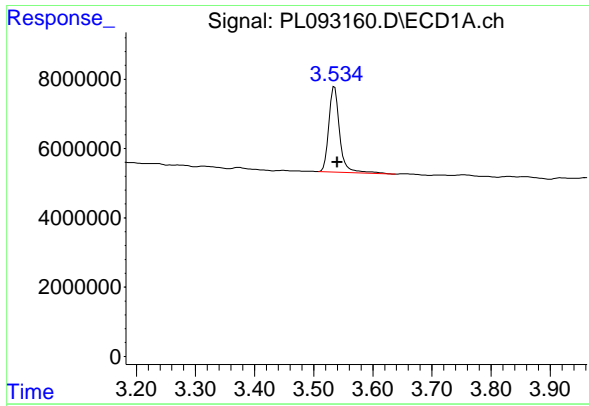
Reviewed By :Yogesh Patel 11/20/2024

Supervised By :Ankita Jodhani 11/20/2024

Integration File signal 1: autoint1.e
 Integration File signal 2: autoint2.e
 Quant Time: Nov 19 23:19:13 2024
 Quant Method : Z:\pestpcbsrv\HPCHEM1\ECD_L\methods\PL102824.M
 Quant Title : GC Extractables
 QLast Update : Mon Oct 28 18:58:23 2024
 Response via : Initial Calibration
 Integrator: ChemStation

Volume Inj. : 1 µl
 Signal #1 Phase : ZB-MR2 Signal #2 Phase: ZB-MR1
 Signal #1 Info : 30M x 0.32mm x0.2 Signal #2 Info : 30M x 0.32mm x0.5µm





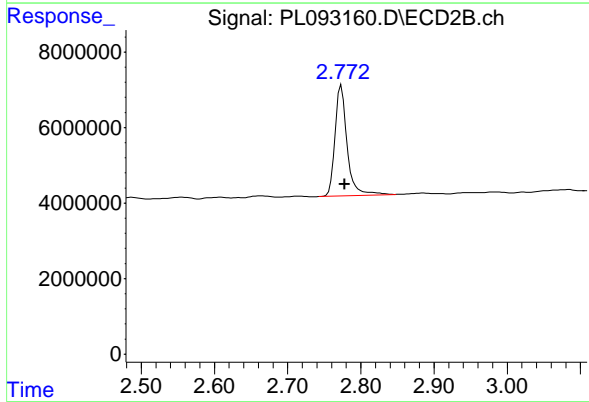
#1 Tetrachloro-m-xylene

R.T.: 3.535 min
 Delta R.T.: -0.005 min
 Response: 31682794
 Conc: 12.93 ng/ml

Instrument : ECD_L
 Client Sample Id : BU-02-111824

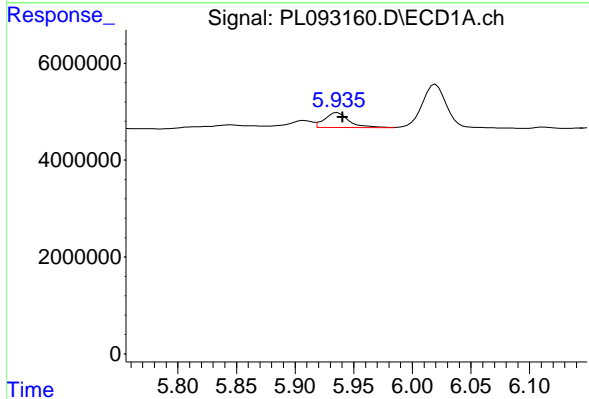
Manual Integrations
 APPROVED

Reviewed By :Yogesh Patel 11/20/2024
 Supervised By :Ankita Jodhani 11/20/2024



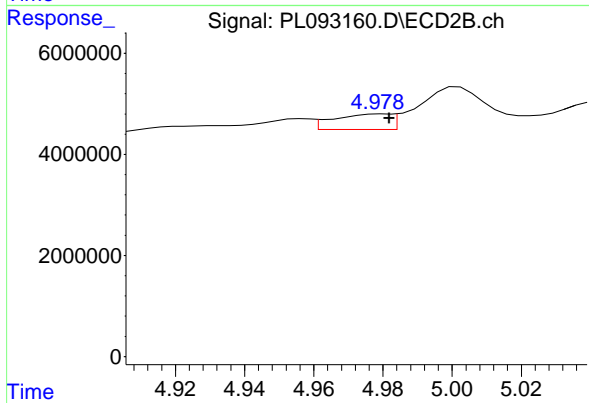
#1 Tetrachloro-m-xylene

R.T.: 2.773 min
 Delta R.T.: -0.005 min
 Response: 33734893
 Conc: 12.40 ng/ml



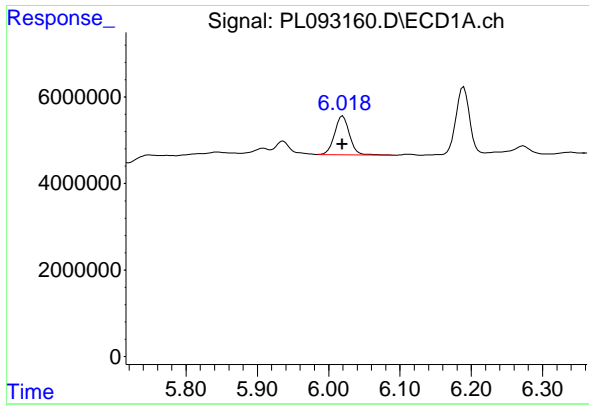
#10 gamma-Chlordane

R.T.: 5.936 min
 Delta R.T.: -0.004 min
 Response: 4469159
 Conc: 1.68 ng/ml



#10 gamma-Chlordane

R.T.: 4.978 min
 Delta R.T.: -0.004 min
 Response: 3572018
 Conc: 1.06 ng/ml m



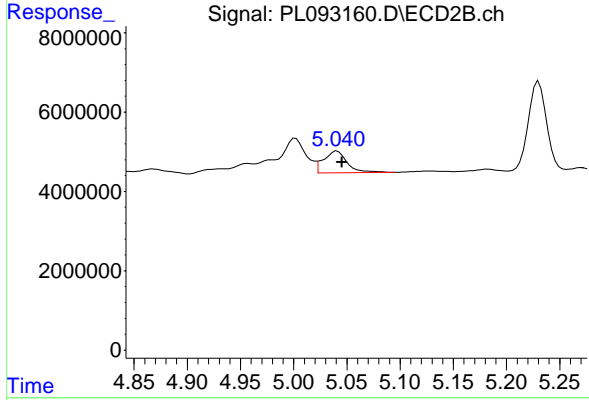
#11 alpha-Chlordane

R.T.: 6.020 min
 Delta R.T.: 0.000 min
 Response: 13153758
 Conc: 4.97 ng/ml

Instrument : ECD_L
 Client Sample Id : BU-02-111824

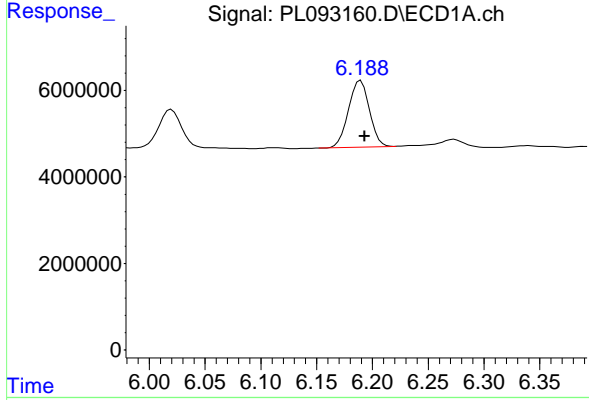
Manual Integrations
 APPROVED

Reviewed By :Yogesh Patel 11/20/2024
 Supervised By :Ankita Jodhani 11/20/2024



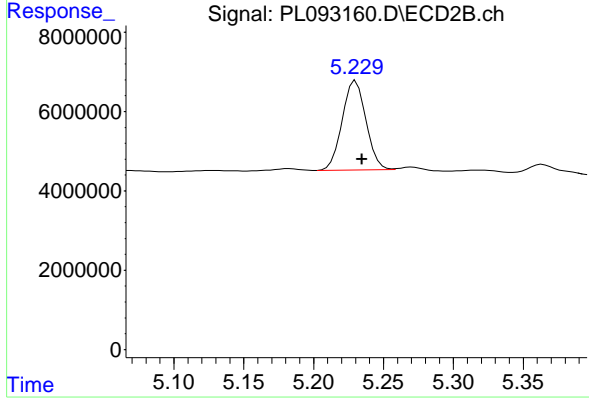
#11 alpha-Chlordane

R.T.: 5.041 min
 Delta R.T.: -0.005 min
 Response: 8540871
 Conc: 2.57 ng/ml



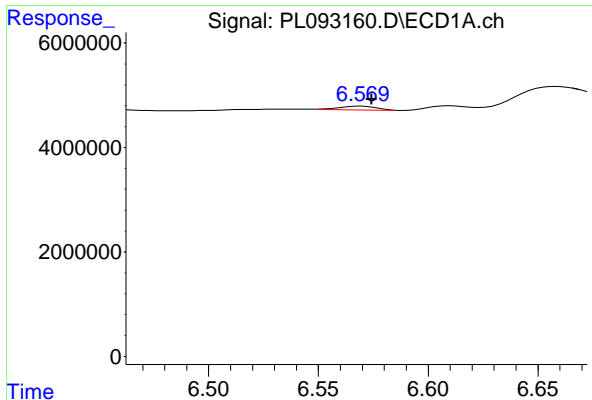
#12 4,4'-DDE

R.T.: 6.189 min
 Delta R.T.: -0.004 min
 Response: 20133018
 Conc: 8.50 ng/ml



#12 4,4'-DDE

R.T.: 5.230 min
 Delta R.T.: -0.004 min
 Response: 26715947
 Conc: 8.29 ng/ml



#14 Endrin

R.T.: 6.569 min
 Delta R.T.: -0.005 min
 Response: 798246
 Conc: 0.35 ng/ml

Instrument :

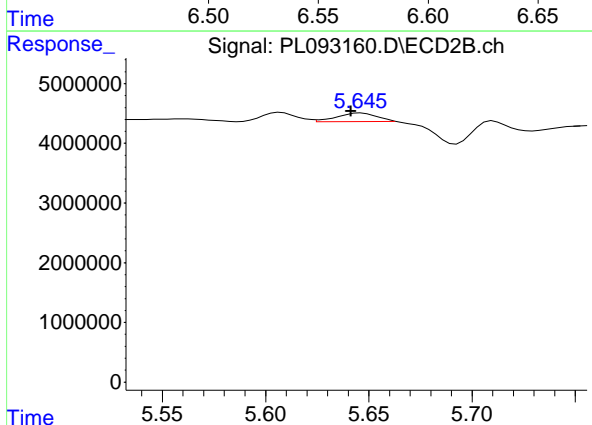
ECD_L

Client Sample Id :

BU-02-111824

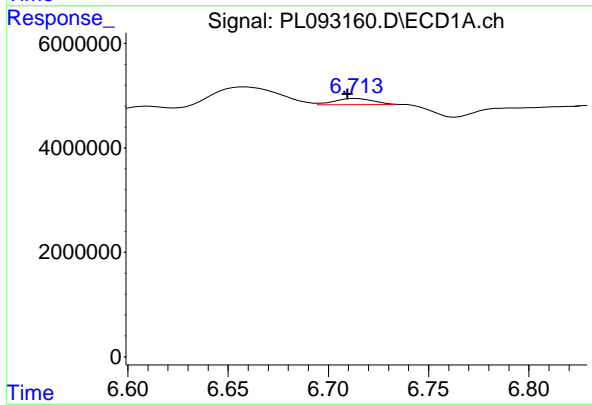
Manual Integrations
 APPROVED

Reviewed By :Yogesh Patel 11/20/2024
 Supervised By :Ankita Jodhani 11/20/2024



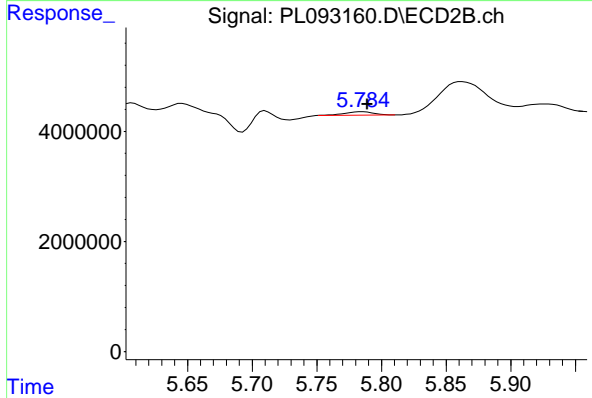
#14 Endrin

R.T.: 5.645 min
 Delta R.T.: 0.003 min
 Response: 1962410
 Conc: 0.68 ng/ml m



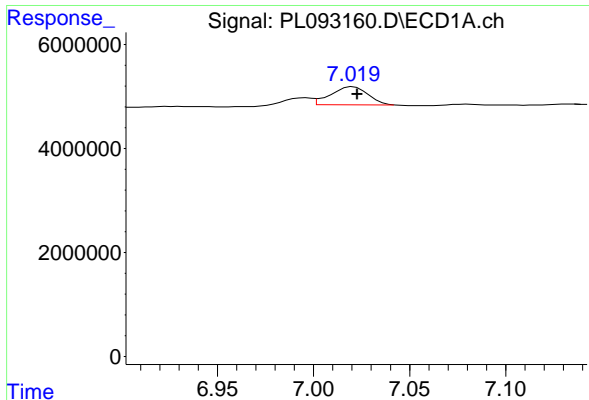
#16 4,4'-DDD

R.T.: 6.713 min
 Delta R.T.: 0.003 min
 Response: 1557803
 Conc: 0.81 ng/ml m



#16 4,4'-DDD

R.T.: 5.785 min
 Delta R.T.: -0.004 min
 Response: 967038
 Conc: 0.39 ng/ml



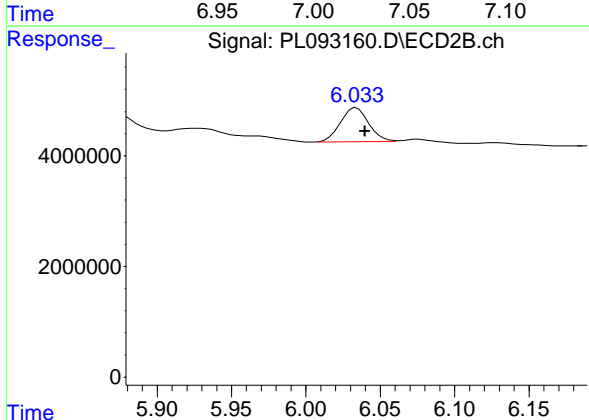
#17 4,4' -DDT

R.T.: 7.019 min
 Delta R.T.: -0.003 min
 Response: 4577374
 Conc: 2.21 ng/ml

Instrument : ECD_L
 Client Sample Id : BU-02-111824

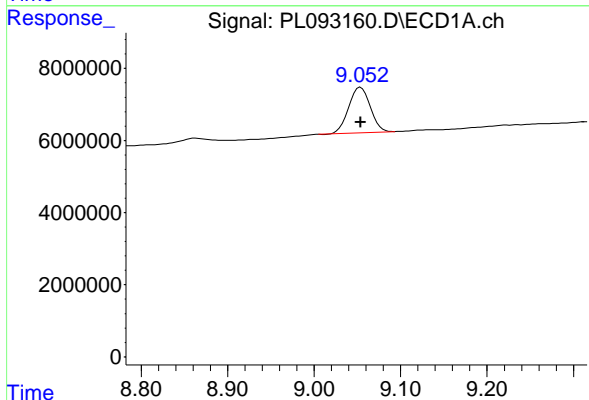
Manual Integrations
 APPROVED

Reviewed By :Yogesh Patel 11/20/2024
 Supervised By :Ankita Jodhani 11/20/2024



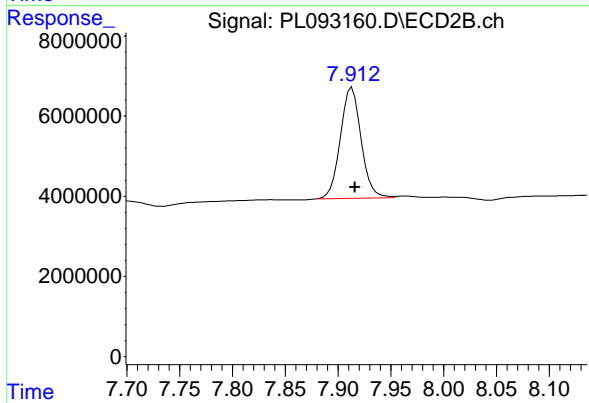
#17 4,4' -DDT

R.T.: 6.033 min
 Delta R.T.: -0.007 min
 Response: 8141221
 Conc: 3.04 ng/ml



#28 Decachlorobiphenyl

R.T.: 9.054 min
 Delta R.T.: 0.000 min
 Response: 21875292
 Conc: 11.37 ng/ml



#28 Decachlorobiphenyl

R.T.: 7.913 min
 Delta R.T.: -0.003 min
 Response: 37923738
 Conc: 13.90 ng/ml