

Data Path : Z:\pestpcbsrv\HPCHEM1\ECD_L\Data\PL112019\
 Data File : PL054480.D
 Signal(s) : Signal #1: ECD1A.ch Signal #2: ECD2B.ch
 Acq On : 20 Nov 2019 15:40
 Operator : SG\AJ
 Sample : PEM
 Misc :
 ALS Vial : 3 Sample Multiplier: 1

Instrument :
 ECD_L
 ClientSampleId :
 PEM

Integration File signal 1: autoint1.e
 Integration File signal 2: autoint2.e
 Quant Time: Nov 21 01:03:59 2019
 Quant Method : Z:\pestpcbsrv\HPCHEM1\ECD_L\methods\PL111819.M
 Quant Title : GC Extractables
 QLast Update : Tue Nov 19 01:04:14 2019
 Response via : Initial Calibration
 Integrator: ChemStation

Volume Inj. : 1 µl
 Signal #1 Phase : ZB-MR2 Signal #2 Phase: ZB-MR1
 Signal #1 Info : 30M x 0.32mm x0.2 Signal #2 Info : 30M x 0.32mm x0.5µm

	Compound	RT#1	RT#2	Resp#1	Resp#2	ng/ml	ng/ml

System Monitoring Compounds							
1)	SA Tetrachlo...	3.538	4.043	232.7E6	53626583	22.378	22.012
28)	SA Decachlor...	8.321	9.123	189.5E6	56060647	21.407	23.187
Target Compounds							
2)	A alpha-BHC	3.981	4.433	175.6E6	35801131	10.310	10.633
3)	MA gamma-BHC...	4.268	4.719	158.5E6	33165174	10.549	10.786
6)	B beta-BHC	4.519	4.890	75628301	17458637	11.764	11.652
8)	B Heptachlo...	5.261	5.914	97513209	29556009	7.550	12.436 #
9)	A Endosulfan I	5.603	6.274	180.0E6	3717632	15.194	1.586 #
11)	B alpha-Chl...	0.000	6.243	0	4602467	N.D.	1.849 #
12)	B 4,4'-DDE	5.742f	0.000	43915250	0	3.797	N.D. #
14)	MA Endrin	6.116	6.752	584.4E6	110.9E6	52.904	52.322
15)	B Endosulfa...	6.384	0.000	3476768	0	0.332	N.D. #
16)	A 4,4'-DDD	6.238	6.874	27022261	6495835	3.276	3.671
17)	MA 4,4'-DDT	6.481	7.173	979.4E6	216.3E6	108.024	110.258
18)	B Endrin al...	6.554	0.000	6259594	0	0.731	N.D. #
20)	A Methoxychlor	7.026	7.631	1156.6E6	283.4E6	252.700	253.933
21)	B Endrin ke...	7.262	7.780	-4372624	3681659	N.D.	1.626
26)	Chlordane-4	0.000	6.243	0	4602467	N.D.	11.361 #
27)	Chlordane-5	6.384f	0.000	3476768	0	9.426	N.D. #

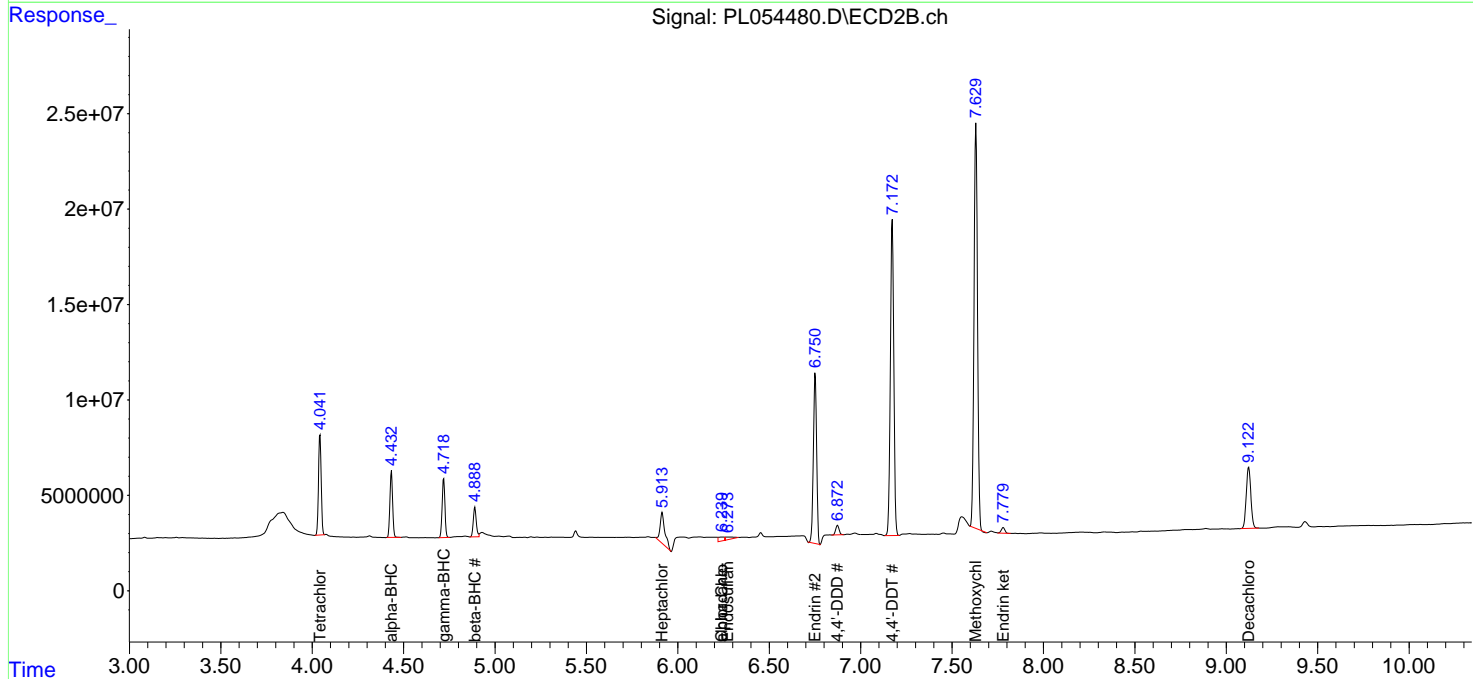
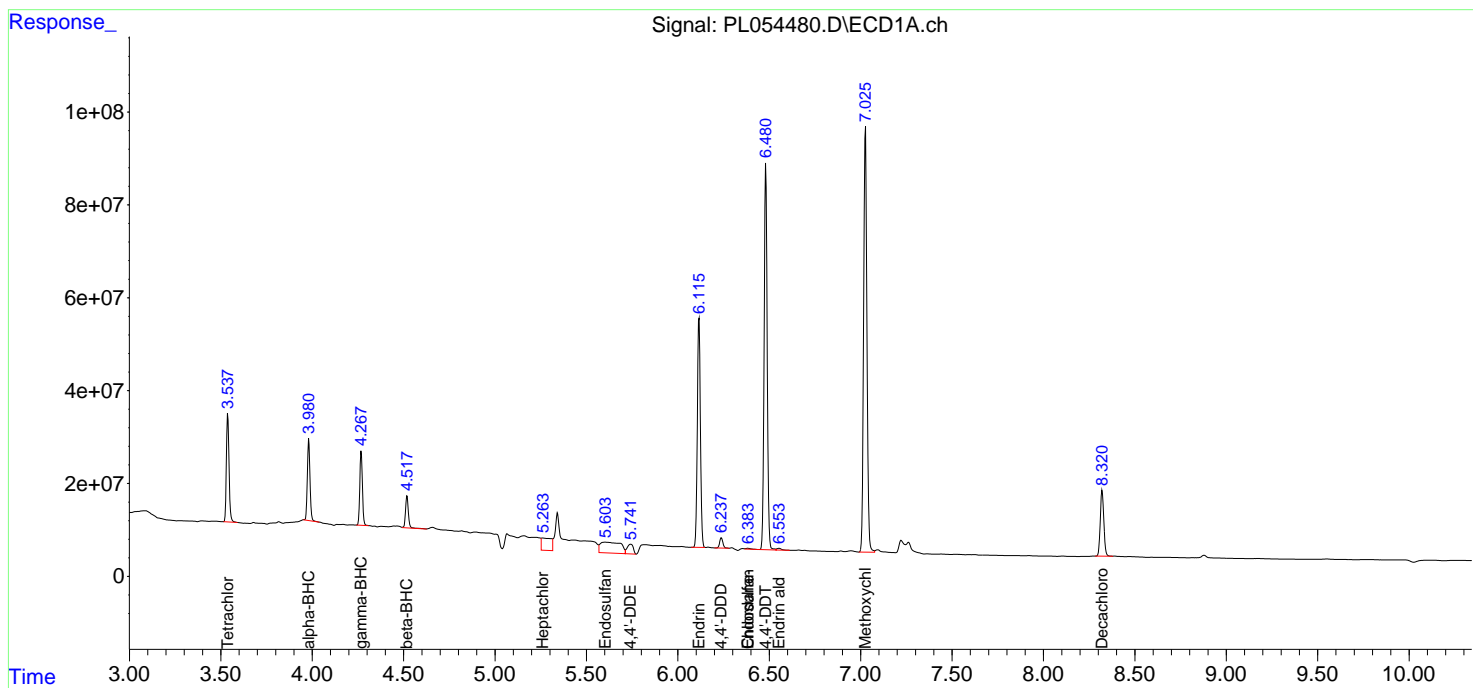
(f)=RT Delta > 1/2 Window (#)=Amounts differ by > 25% (m)=manual int.

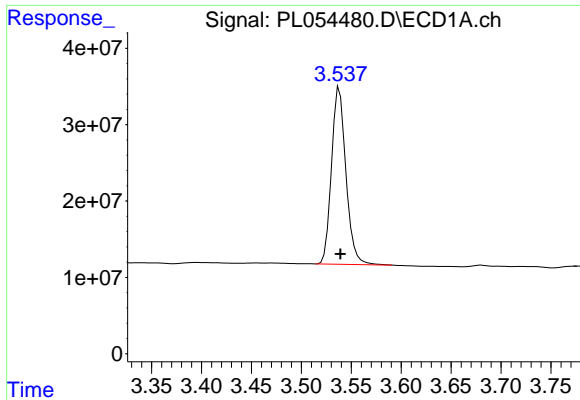
Data Path : Z:\pestpcbsrv\HPCHEM1\ECD_L\Data\PL112019\
 Data File : PL054480.D
 Signal(s) : Signal #1: ECD1A.ch Signal #2: ECD2B.ch
 Acq On : 20 Nov 2019 15:40
 Operator : SG\AJ
 Sample : PEM
 Misc :
 ALS Vial : 3 Sample Multiplier: 1

Instrument :
 ECD_L
 ClientSampled :
 PEM

Integration File signal 1: autoint1.e
 Integration File signal 2: autoint2.e
 Quant Time: Nov 21 01:03:59 2019
 Quant Method : Z:\pestpcbsrv\HPCHEM1\ECD_L\methods\PL111819.M
 Quant Title : GC Extractables
 QLast Update : Tue Nov 19 01:04:14 2019
 Response via : Initial Calibration
 Integrator: ChemStation

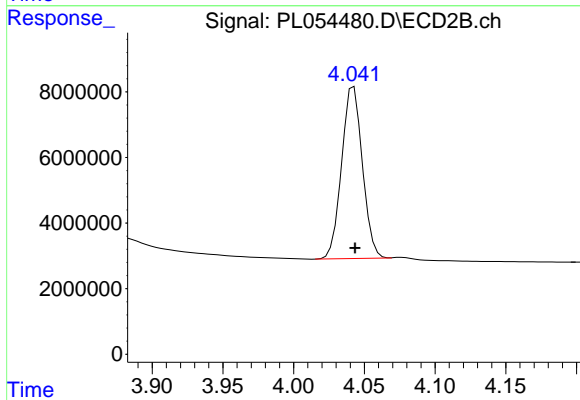
Volume Inj. : 1 µl
 Signal #1 Phase : ZB-MR2 Signal #2 Phase: ZB-MR1
 Signal #1 Info : 30M x 0.32mm x0.2 Signal #2 Info : 30M x 0.32mm x0.5µm



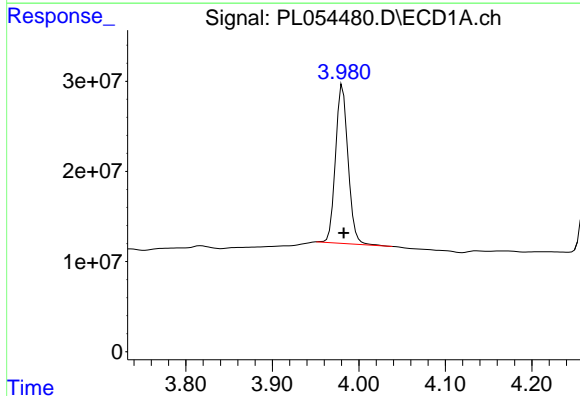


#1 Tetrachloro-m-xylene
 R.T.: 3.538 min
 Delta R.T.: 0.000 min
 Response: 232670306
 Conc: 22.38 ng/ml

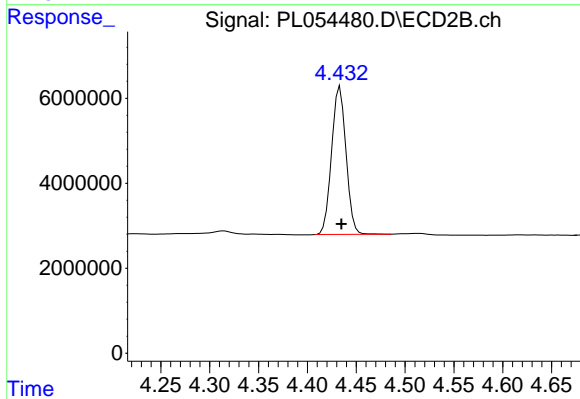
Instrument :
 ECD_L
 ClientSampleId :
 PEM



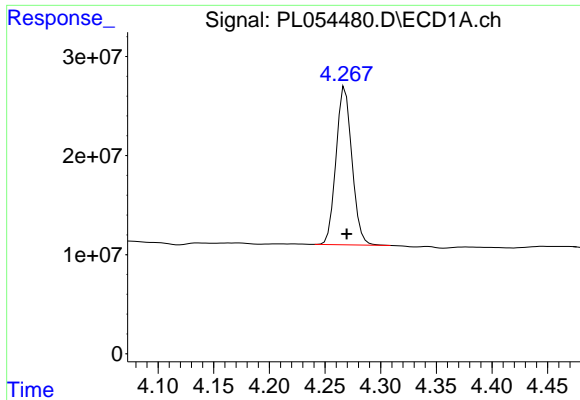
#1 Tetrachloro-m-xylene
 R.T.: 4.043 min
 Delta R.T.: 0.000 min
 Response: 53626583
 Conc: 22.01 ng/ml



#2 alpha-BHC
 R.T.: 3.981 min
 Delta R.T.: 0.000 min
 Response: 175635226
 Conc: 10.31 ng/ml

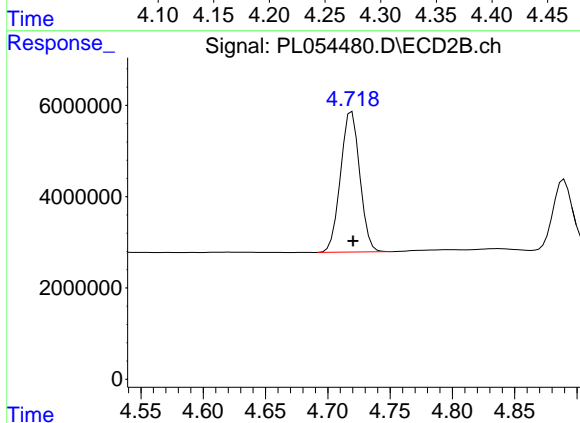


#2 alpha-BHC
 R.T.: 4.433 min
 Delta R.T.: -0.002 min
 Response: 35801131
 Conc: 10.63 ng/ml

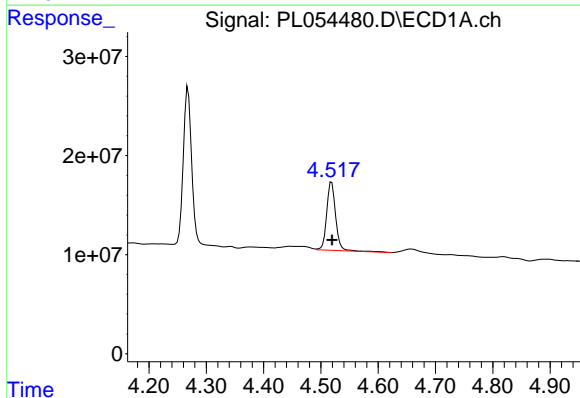


#3 gamma-BHC (Lindane)
 R.T.: 4.268 min
 Delta R.T.: -0.001 min
 Response: 158495712
 Conc: 10.55 ng/ml

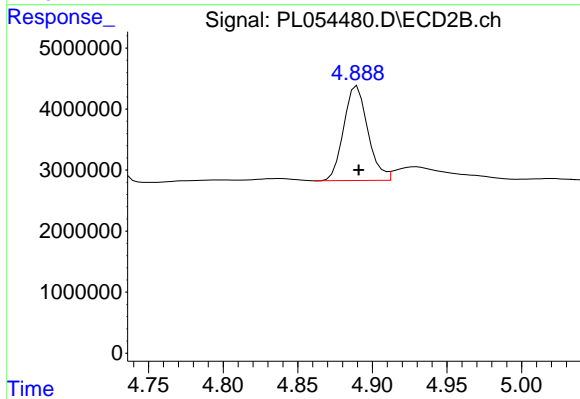
Instrument :
 ECD_L
 ClientSampleId :
 PEM



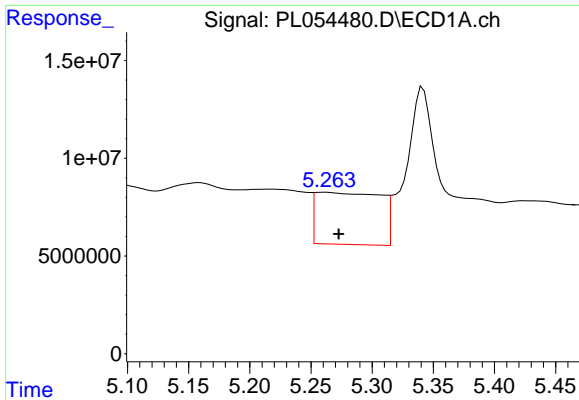
#3 gamma-BHC (Lindane)
 R.T.: 4.719 min
 Delta R.T.: -0.001 min
 Response: 33165174
 Conc: 10.79 ng/ml



#6 beta-BHC
 R.T.: 4.519 min
 Delta R.T.: 0.000 min
 Response: 75628301
 Conc: 11.76 ng/ml

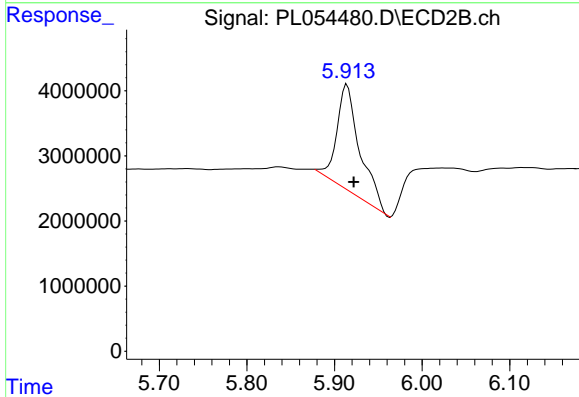


#6 beta-BHC
 R.T.: 4.890 min
 Delta R.T.: 0.000 min
 Response: 17458637
 Conc: 11.65 ng/ml

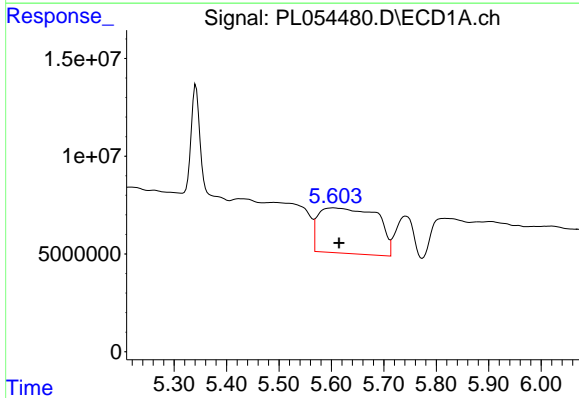


#8 Heptachlor epoxide
 R.T.: 5.261 min
 Delta R.T.: -0.011 min
 Response: 97513209
 Conc: 7.55 ng/ml

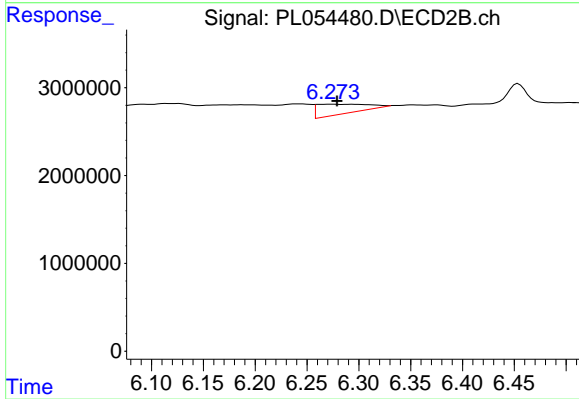
Instrument :
 ECD_L
 ClientSampled :
 PEM



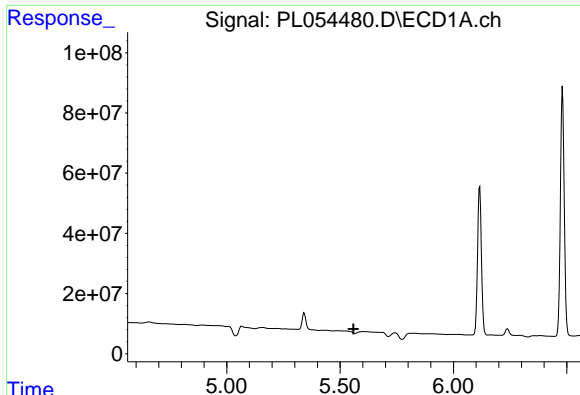
#8 Heptachlor epoxide
 R.T.: 5.914 min
 Delta R.T.: -0.008 min
 Response: 29556009
 Conc: 12.44 ng/ml



#9 Endosulfan I
 R.T.: 5.603 min
 Delta R.T.: -0.011 min
 Response: 179992988
 Conc: 15.19 ng/ml



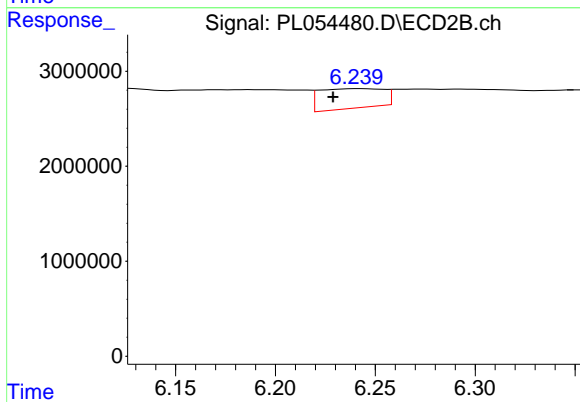
#9 Endosulfan I
 R.T.: 6.274 min
 Delta R.T.: -0.005 min
 Response: 3717632
 Conc: 1.59 ng/ml



#11 alpha-Chlordane

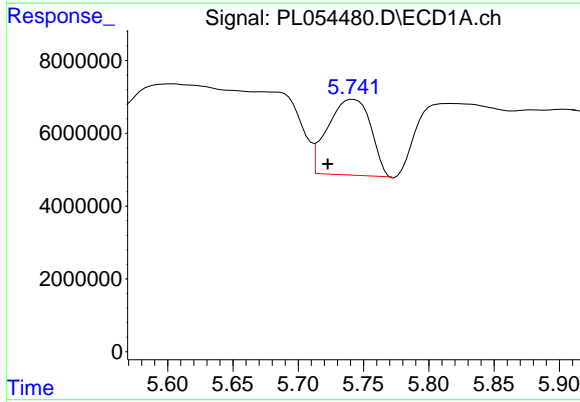
R.T.: 0.000 min
 Exp R.T.: 5.559 min
 Response: 0
 Conc: N.D.

Instrument :
 ECD_L
 ClientSampleId :
 PEM



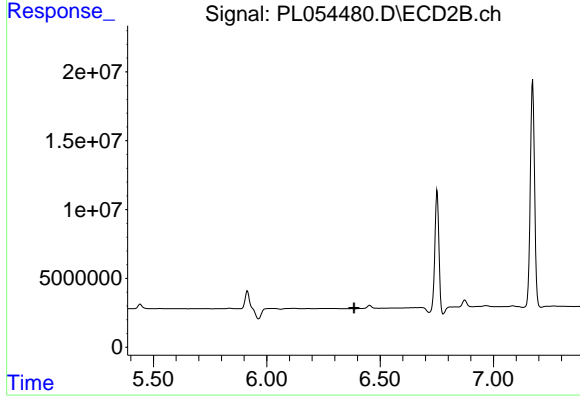
#11 alpha-Chlordane

R.T.: 6.243 min
 Delta R.T.: 0.014 min
 Response: 4602467
 Conc: 1.85 ng/ml



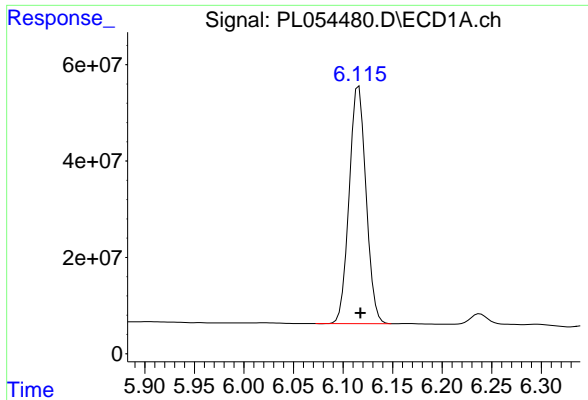
#12 4,4'-DDE

R.T.: 5.742 min
 Delta R.T.: 0.020 min
 Response: 43915250
 Conc: 3.80 ng/ml



#12 4,4'-DDE

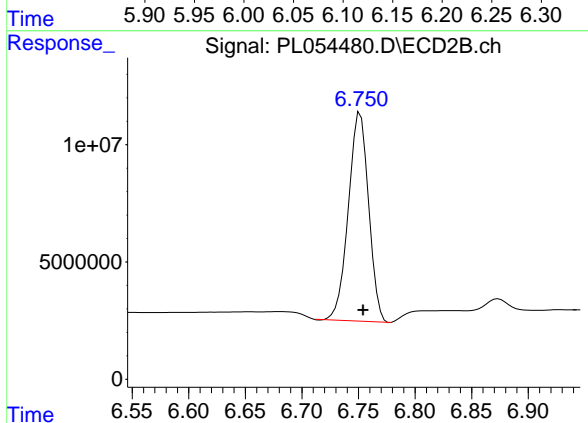
R.T.: 0.000 min
 Exp R.T.: 6.385 min
 Response: 0
 Conc: N.D.



#14 Endrin

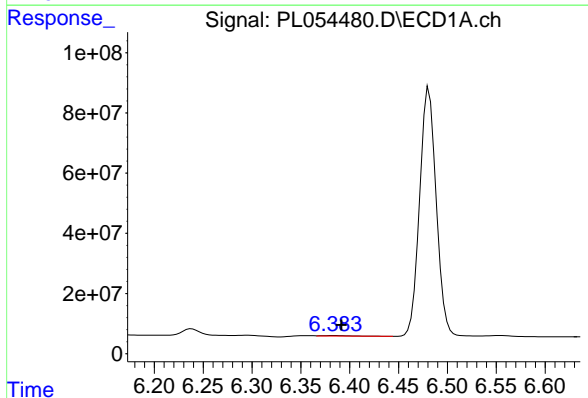
R.T.: 6.116 min
 Delta R.T.: -0.002 min
 Response: 584387146
 Conc: 52.90 ng/ml

Instrument :
 ECD_L
 ClientSampled :
 PEM



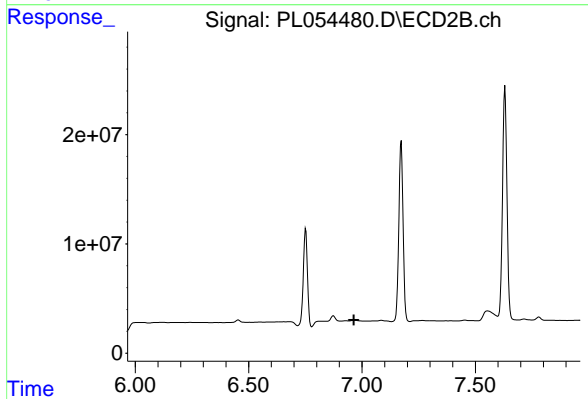
#14 Endrin

R.T.: 6.752 min
 Delta R.T.: -0.002 min
 Response: 110906012
 Conc: 52.32 ng/ml



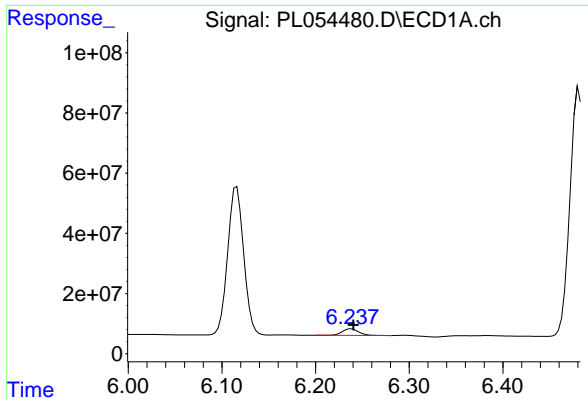
#15 Endosulfan II

R.T.: 6.384 min
 Delta R.T.: -0.008 min
 Response: 3476768
 Conc: 0.33 ng/ml



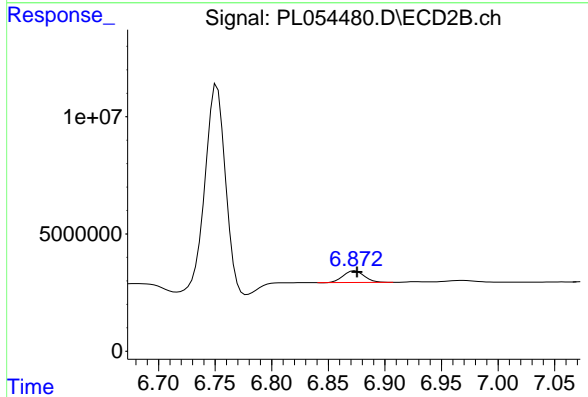
#15 Endosulfan II

R.T.: 0.000 min
 Exp R.T. : 6.964 min
 Response: 0
 Conc: N.D.

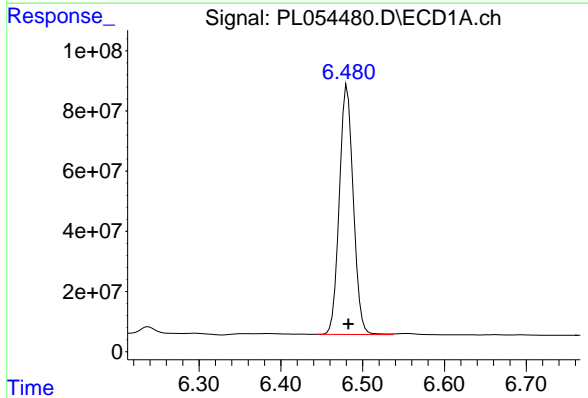


#16 4,4'-DDD
 R.T.: 6.238 min
 Delta R.T.: -0.003 min
 Response: 27022261
 Conc: 3.28 ng/ml

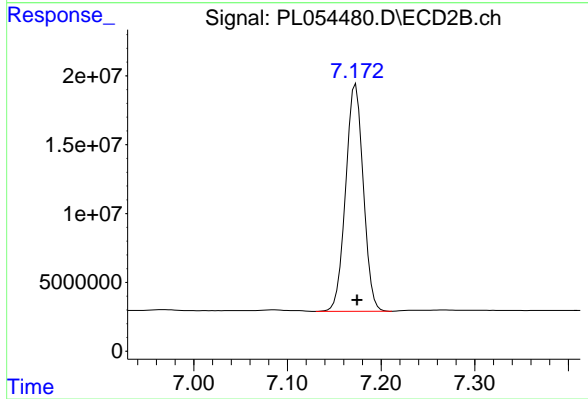
Instrument :
 ECD_L
 ClientSampled :
 PEM



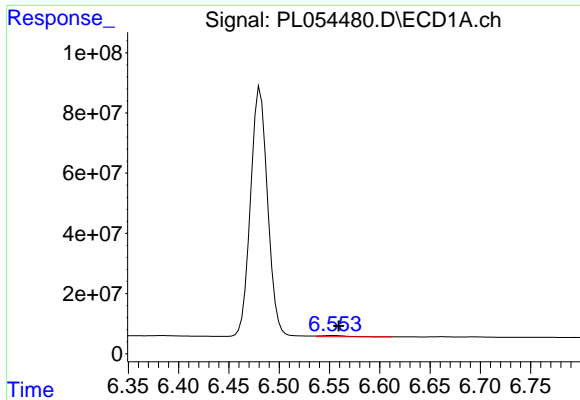
#16 4,4'-DDD
 R.T.: 6.874 min
 Delta R.T.: -0.002 min
 Response: 6495835
 Conc: 3.67 ng/ml



#17 4,4'-DDT
 R.T.: 6.481 min
 Delta R.T.: -0.001 min
 Response: 979390281
 Conc: 108.02 ng/ml

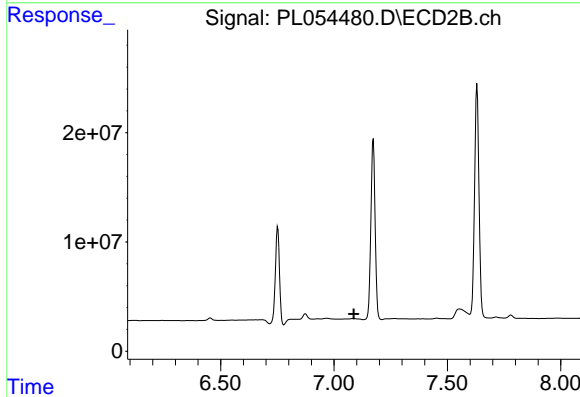


#17 4,4'-DDT
 R.T.: 7.173 min
 Delta R.T.: -0.001 min
 Response: 216282437
 Conc: 110.26 ng/ml

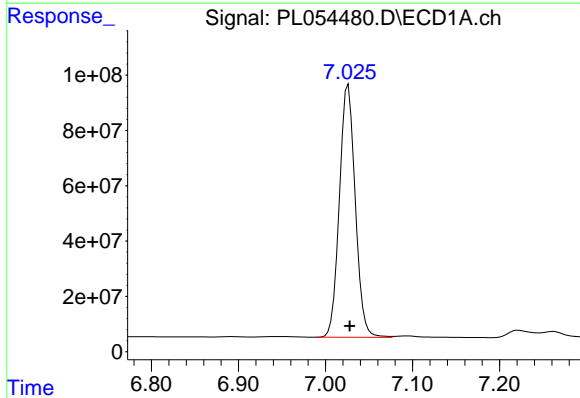


#18 Endrin aldehyde
 R.T.: 6.554 min
 Delta R.T.: -0.005 min
 Response: 6259594
 Conc: 0.73 ng/ml

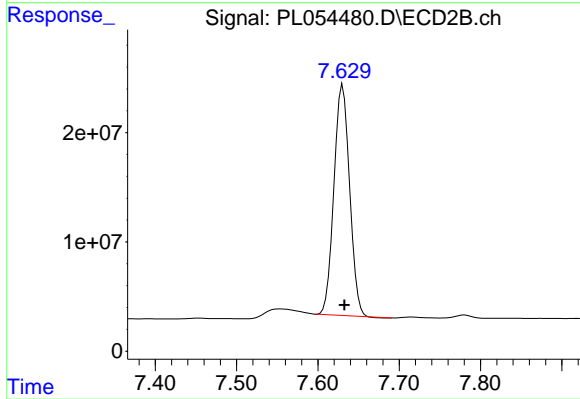
Instrument :
 ECD_L
 ClientSampled :
 PEM



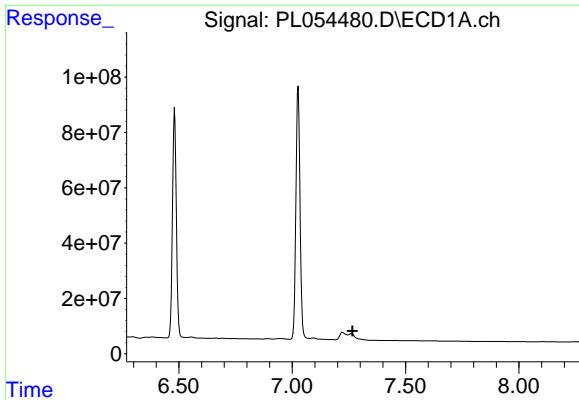
#18 Endrin aldehyde
 R.T.: 0.000 min
 Exp R.T. : 7.087 min
 Response: 0
 Conc: N.D.



#20 Methoxychlor
 R.T.: 7.026 min
 Delta R.T.: -0.002 min
 Response: 1156561151
 Conc: 252.70 ng/ml



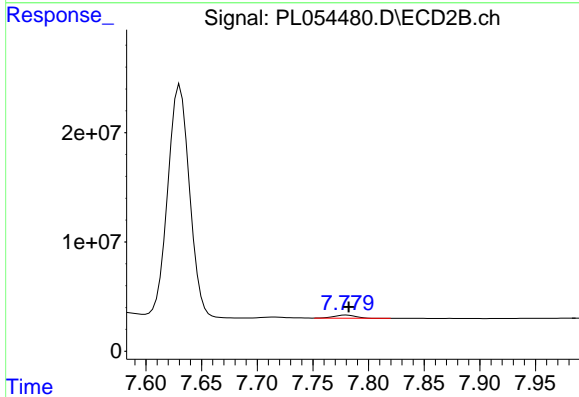
#20 Methoxychlor
 R.T.: 7.631 min
 Delta R.T.: -0.002 min
 Response: 283351213
 Conc: 253.93 ng/ml



#21 Endrin ketone

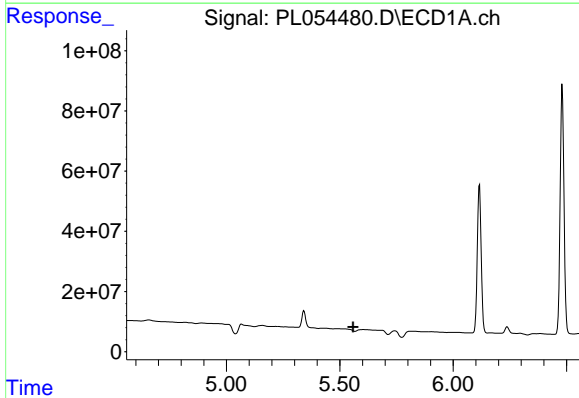
R.T.: 7.262 min
 Delta R.T.: -0.005 min
 Response: -4372624
 Conc: N.D.

Instrument :
 ECD_L
 ClientSampled :
 PEM



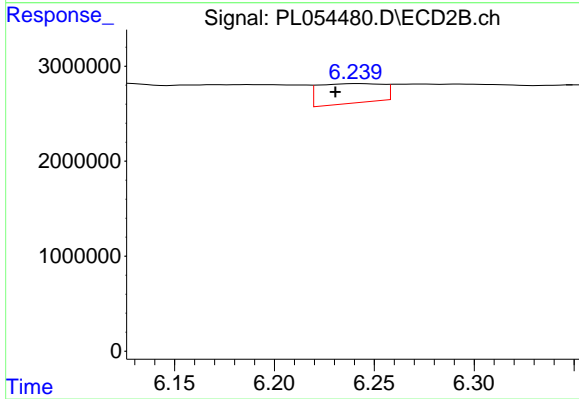
#21 Endrin ketone

R.T.: 7.780 min
 Delta R.T.: -0.002 min
 Response: 3681659
 Conc: 1.63 ng/ml



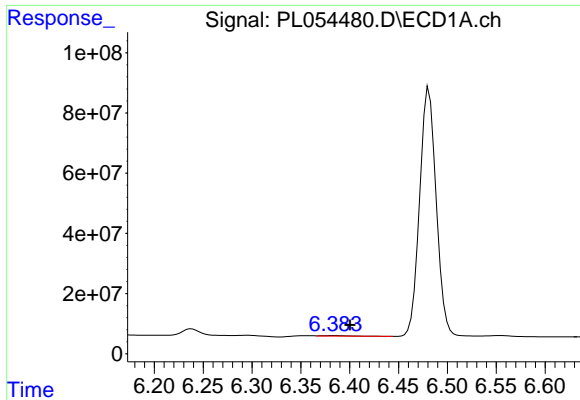
#26 Chlordane-4

R.T.: 0.000 min
 Exp R.T. : 5.559 min
 Response: 0
 Conc: N.D.



#26 Chlordane-4

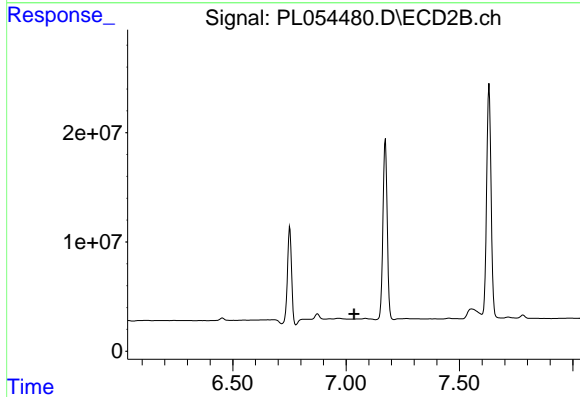
R.T.: 6.243 min
 Delta R.T.: 0.012 min
 Response: 4602467
 Conc: 11.36 ng/ml



#27 Chlordane-5

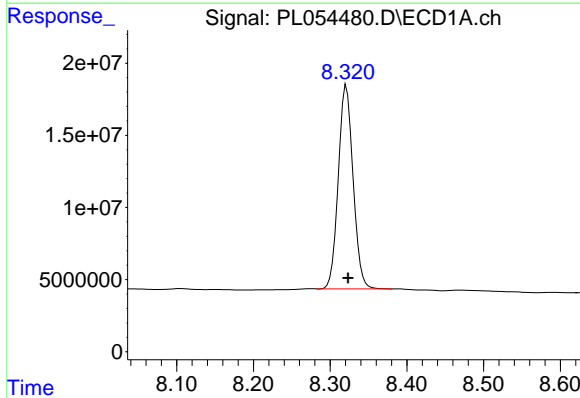
R.T.: 6.384 min
 Delta R.T.: -0.017 min
 Response: 3476768
 Conc: 9.43 ng/ml

Instrument :
 ECD_L
 ClientSampled :
 PEM



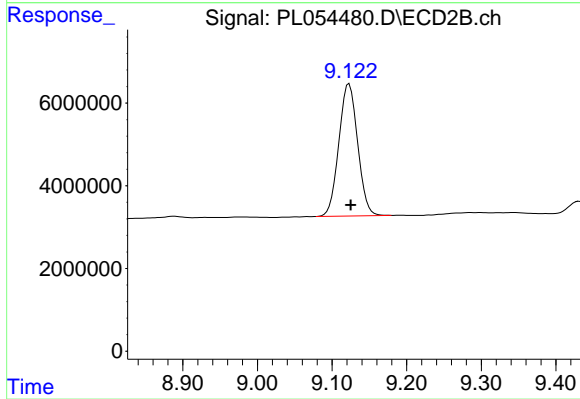
#27 Chlordane-5

R.T.: 0.000 min
 Exp R.T. : 7.035 min
 Response: 0
 Conc: N.D.



#28 Decachlorobiphenyl

R.T.: 8.321 min
 Delta R.T.: -0.002 min
 Response: 189469749
 Conc: 21.41 ng/ml



#28 Decachlorobiphenyl

R.T.: 9.123 min
 Delta R.T.: -0.002 min
 Response: 56060647
 Conc: 23.19 ng/ml