

Data Path : Z:\pestpcbsrv\HPCHEM1\ECD\_L\Data\PL112118\  
 Data File : PL042354.D  
 Signal(s) : Signal #1: ECD1A.ch Signal #2: ECD2B.ch  
 Acq On : 20 Nov 2018 16:04  
 Operator : AJ\SJ  
 Sample : J5999-10MSD  
 Misc :  
 ALS Vial : 18 Sample Multiplier: 1

Instrument :  
 ECD\_L  
 ClientSampleId :

Integration File signal 1: autoint1.e  
 Integration File signal 2: autoint2.e  
 Quant Time: Nov 21 00:04:32 2018  
 Quant Method : Z:\pestpcbsrv\HPCHEM1\ECD\_L\methods\PL112018.M  
 Quant Title : GC Extractables  
 QLast Update : Tue Nov 20 02:29:59 2018  
 Response via : Initial Calibration  
 Integrator: ChemStation

Volume Inj. : 2 µl  
 Signal #1 Phase : ZB-MR2 Signal #2 Phase: ZB-MR2  
 Signal #1 Info : 30M x 0.32mm x0.5 Signal #2 Info : 30M x 0.32mm x0.25µm

	Compound	RT#1	RT#2	Resp#1	Resp#2	ng/ml	ng/ml
-----							
System Monitoring Compounds							
1)	SA Tetrachlo...	3.468	4.102	121.0E6	66909342	20.560	23.264
28)	SA Decachlor...	8.206	9.233	106.2E6	42646199	16.858	17.682
Target Compounds							
2)	A alpha-BHC	3.908	4.497	498.8E6	251.8E6	55.277	58.799
3)	MA gamma-BHC...	4.191	4.786	458.4E6	234.0E6	55.624	59.209
4)	MA Heptachlor	4.487	5.302	449.7E6	213.7E6	51.683	54.474
5)	MB Aldrin	4.733	5.611	424.6E6	212.6E6	52.300	55.359
6)	B beta-BHC	4.444	4.955	186.2E6	94165029	52.566	59.684
7)	B delta-BHC	4.647	5.176	380.9E6	200.3E6	49.740	54.429
8)	B Heptachlo...	5.176	5.999	403.8E6	194.5E6	53.274	54.238
9)	A Endosulfan I	5.514	6.359	392.2E6	176.1E6	56.677	55.771
10)	B gamma-Chl...	5.402	6.234	408.4E6	192.6E6	53.569	56.577
11)	B alpha-Chl...	5.459	6.308	387.4E6	187.3E6	51.611	56.026
12)	B 4,4'-DDE	5.626	6.462	337.2E6	180.1E6	51.518	54.117
13)	MA Dieldrin	5.757	6.617	389.1E6	188.9E6	52.889	56.760
14)	MA Endrin	6.012	6.837	353.1E6	157.9E6	53.984	57.320
15)	B Endosulfa...	6.288	7.046	319.2E6	129.6E6	51.061	46.923
16)	A 4,4'-DDD	6.142	6.954	280.9E6	172.5E6	53.044	65.529
17)	MA 4,4'-DDT	6.380	7.254	274.7E6	132.9E6	49.345	50.328
18)	B Endrin al...	6.456	7.170	252.1E6	122.6E6	48.494	53.496
19)	B Endosulfa...	6.668	7.393	310.0E6	154.2E6	49.678	55.456
20)	A Methoxychlor	6.926	7.710	153.8E6	69336520	48.764	50.854
21)	B Endrin ke...	7.158	7.868	355.8E6	150.0E6	51.377	54.264
23)	Chlordane-1	4.359	5.176	2417446	200.3E6	8.744	1506.830 #
24)	Chlordane-2	4.847	5.611	4864154	212.6E6	17.309	1524.627 #
25)	Chlordane-3	5.402	6.234	408.4E6	192.6E6	465.945	409.873
26)	Chlordane-4	5.459	6.308	387.4E6	187.3E6	510.506	342.391 #
27)	Chlordane-5	6.288	7.085	319.2E6	2132509	1071.088	22.169 #

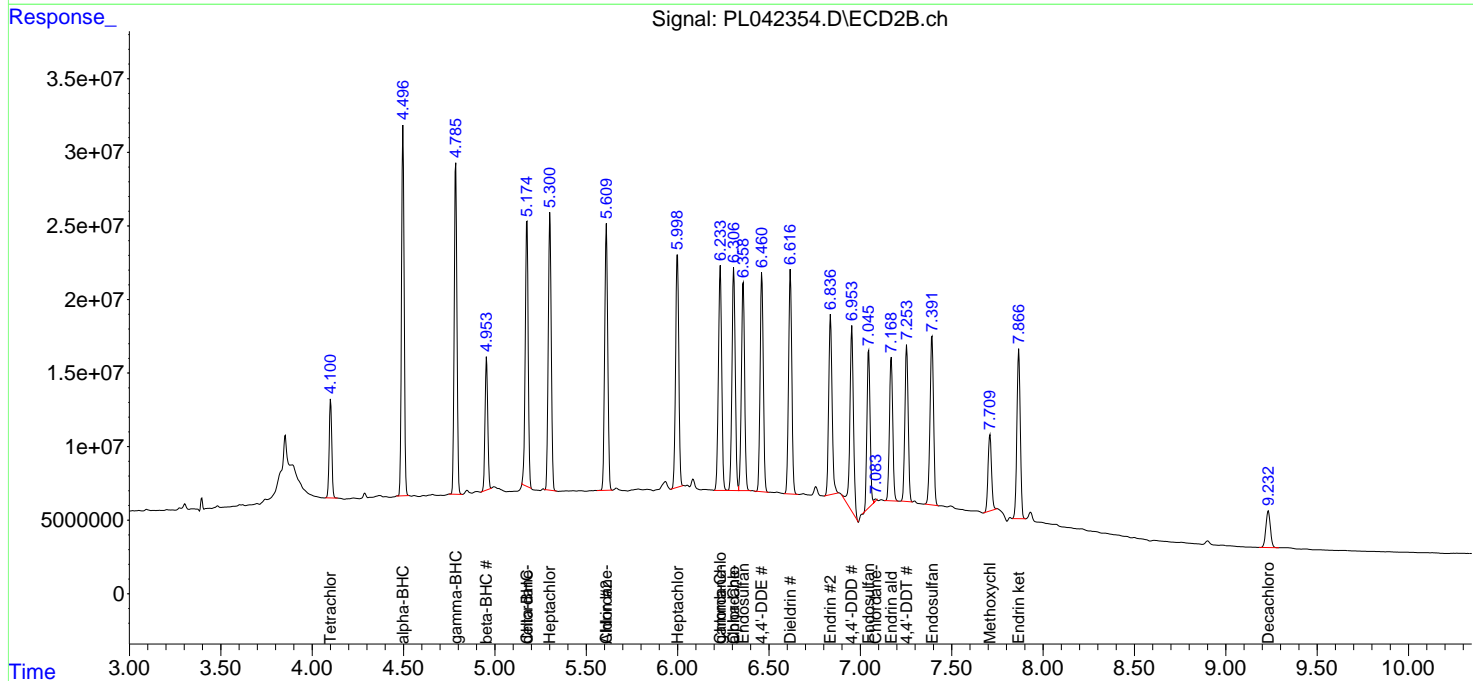
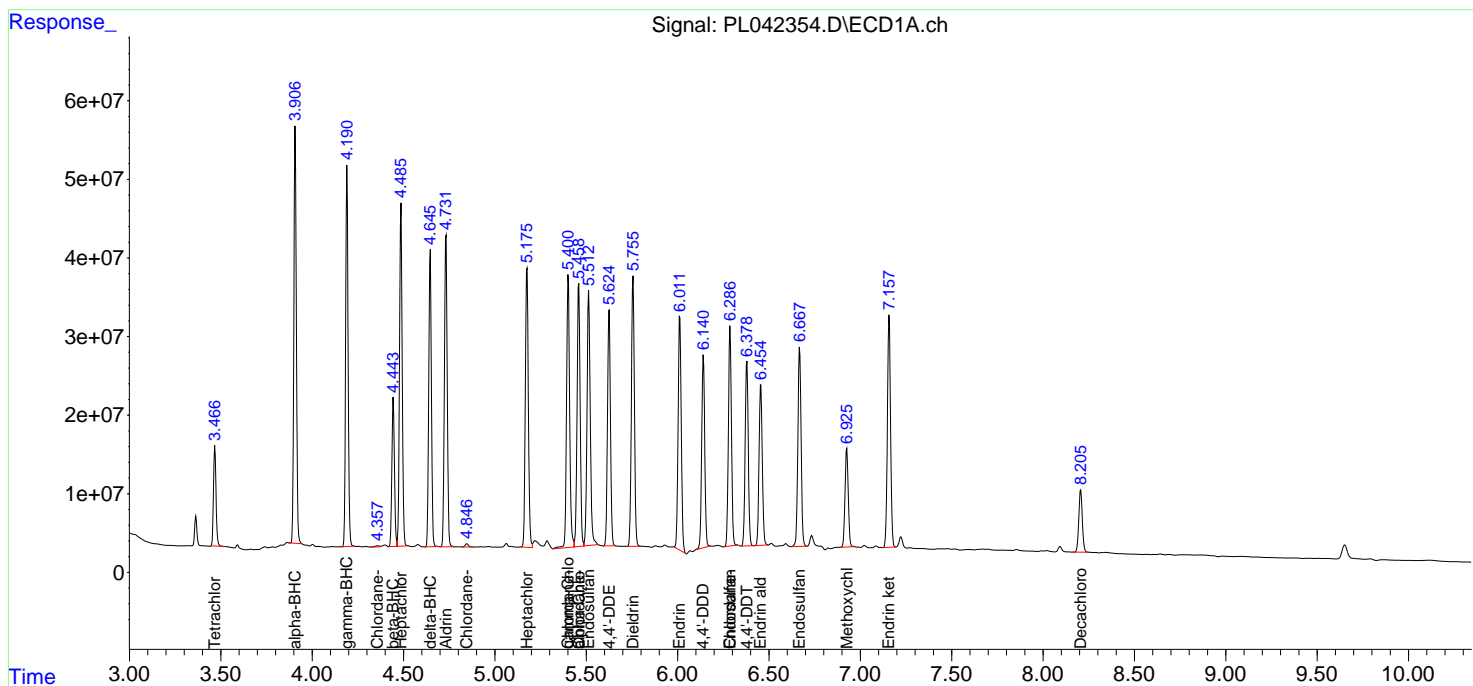
(f)=RT Delta > 1/2 Window (#)=Amounts differ by > 25% (m)=manual int.

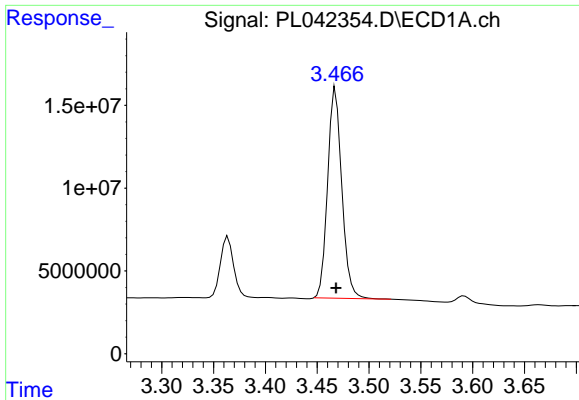
Data Path : Z:\pestpcbsrv\HPCHEM1\ECD\_L\Data\PL112118\  
 Data File : PL042354.D  
 Signal(s) : Signal #1: ECD1A.ch Signal #2: ECD2B.ch  
 Acq On : 20 Nov 2018 16:04  
 Operator : AJ\SJ  
 Sample : J5999-10MSD  
 Misc :  
 ALS Vial : 18 Sample Multiplier: 1

Instrument :  
 ECD\_L  
 ClientSampled :

Integration File signal 1: autoint1.e  
 Integration File signal 2: autoint2.e  
 Quant Time: Nov 21 00:04:32 2018  
 Quant Method : Z:\pestpcbsrv\HPCHEM1\ECD\_L\methods\PL112018.M  
 Quant Title : GC Extractables  
 QLast Update : Tue Nov 20 02:29:59 2018  
 Response via : Initial Calibration  
 Integrator: ChemStation

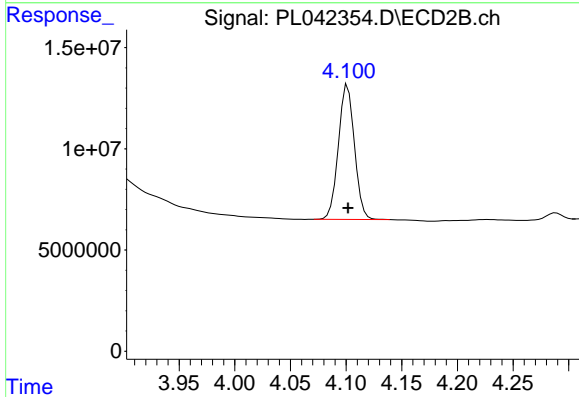
Volume Inj. : 2 µl  
 Signal #1 Phase : ZB-MR1 Signal #2 Phase: ZB-MR2  
 Signal #1 Info : 30M x 0.32mm x0.5 Signal #2 Info : 30M x 0.32mm x0.25µm



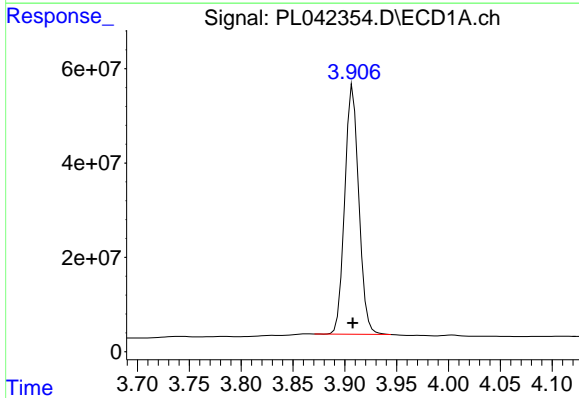


#1 Tetrachloro-m-xylene  
R.T.: 3.468 min  
Delta R.T.: 0.000 min  
Response: 120962953  
Conc: 20.56 ng/ml

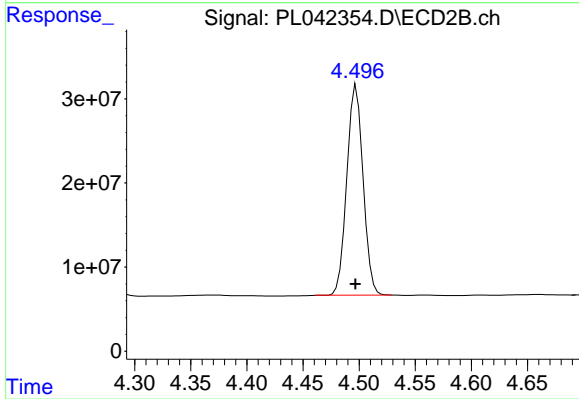
Instrument :  
ECD\_L  
ClientSampleId :



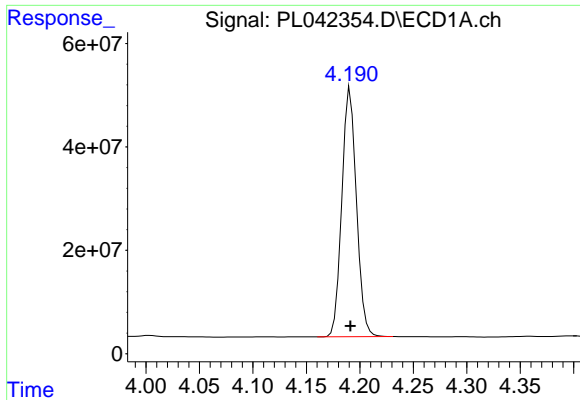
#1 Tetrachloro-m-xylene  
R.T.: 4.102 min  
Delta R.T.: 0.000 min  
Response: 66909342  
Conc: 23.26 ng/ml



#2 alpha-BHC  
R.T.: 3.908 min  
Delta R.T.: 0.000 min  
Response: 498776132  
Conc: 55.28 ng/ml

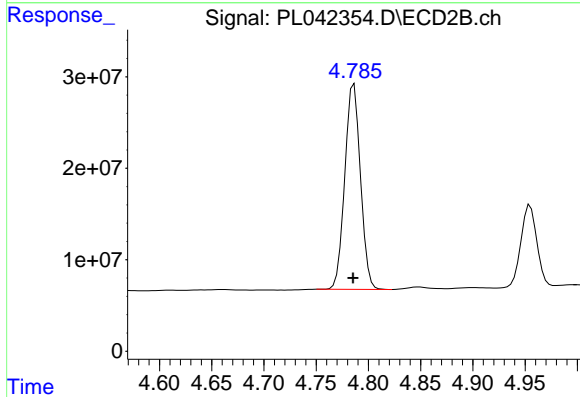


#2 alpha-BHC  
R.T.: 4.497 min  
Delta R.T.: 0.000 min  
Response: 251806398  
Conc: 58.80 ng/ml

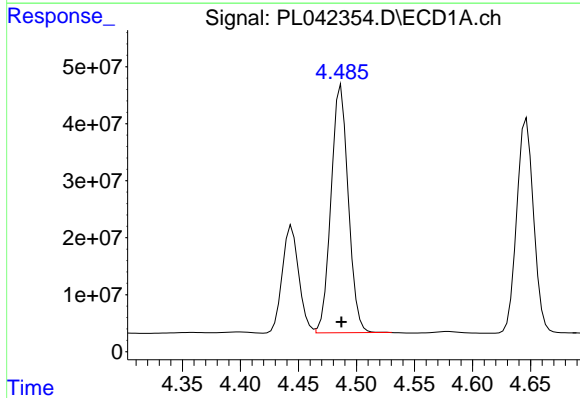


#3 gamma-BHC (Lindane)  
 R.T.: 4.191 min  
 Delta R.T.: 0.000 min  
 Response: 458447354  
 Conc: 55.62 ng/ml

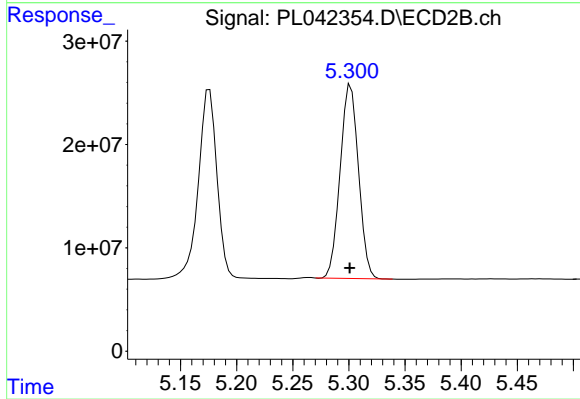
Instrument :  
 ECD\_L  
 ClientSampleId :



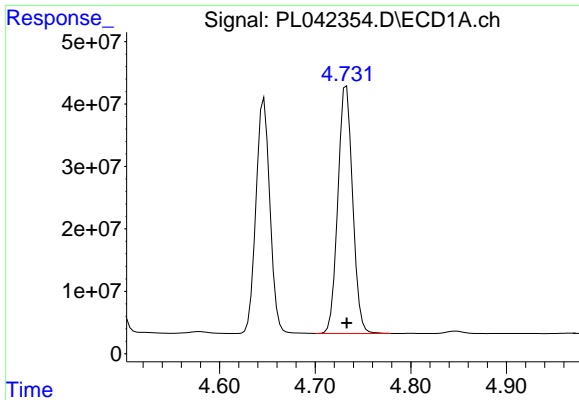
#3 gamma-BHC (Lindane)  
 R.T.: 4.786 min  
 Delta R.T.: 0.000 min  
 Response: 233969129  
 Conc: 59.21 ng/ml



#4 Heptachlor  
 R.T.: 4.487 min  
 Delta R.T.: 0.000 min  
 Response: 449713483  
 Conc: 51.68 ng/ml

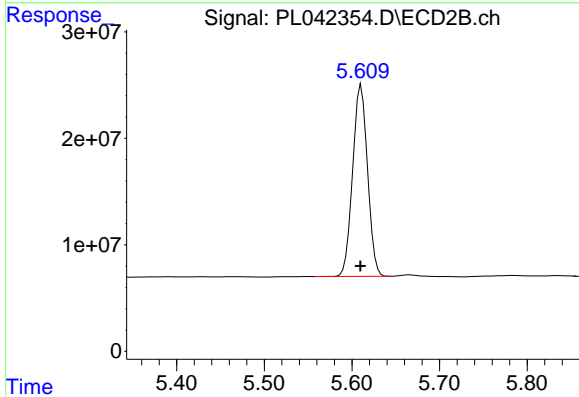


#4 Heptachlor  
 R.T.: 5.302 min  
 Delta R.T.: 0.000 min  
 Response: 213690640  
 Conc: 54.47 ng/ml

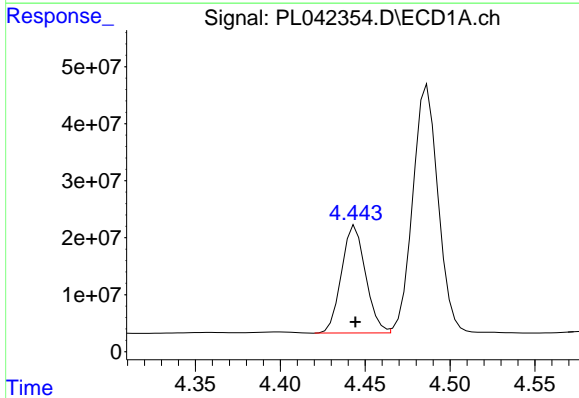


#5 Aldrin  
 R.T.: 4.733 min  
 Delta R.T.: 0.000 min  
 Response: 424619447  
 Conc: 52.30 ng/ml

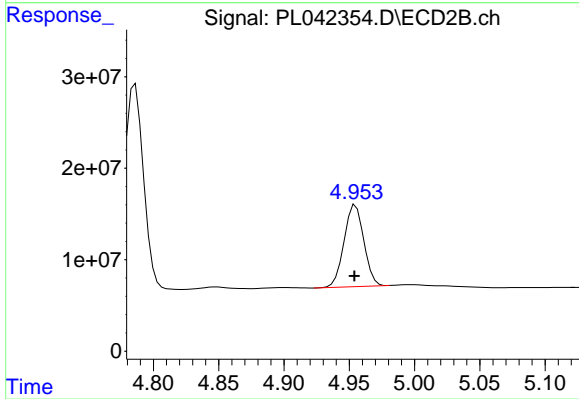
Instrument :  
 ECD\_L  
 ClientSampled :



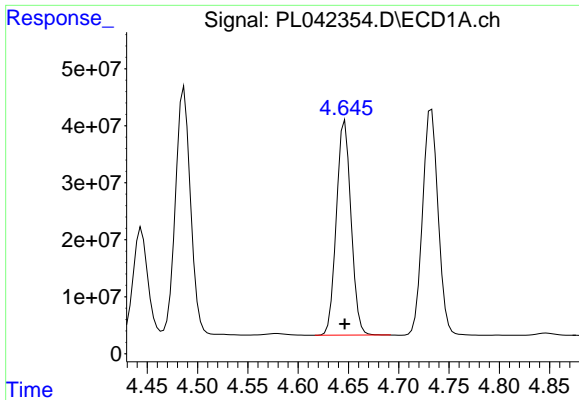
#5 Aldrin  
 R.T.: 5.611 min  
 Delta R.T.: 0.000 min  
 Response: 212600254  
 Conc: 55.36 ng/ml



#6 beta-BHC  
 R.T.: 4.444 min  
 Delta R.T.: 0.000 min  
 Response: 186229550  
 Conc: 52.57 ng/ml

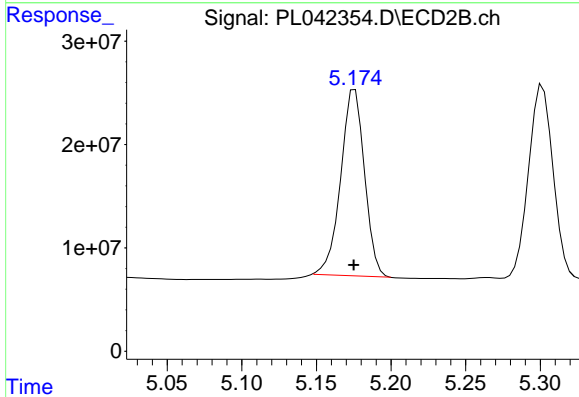


#6 beta-BHC  
 R.T.: 4.955 min  
 Delta R.T.: 0.000 min  
 Response: 94165029  
 Conc: 59.68 ng/ml

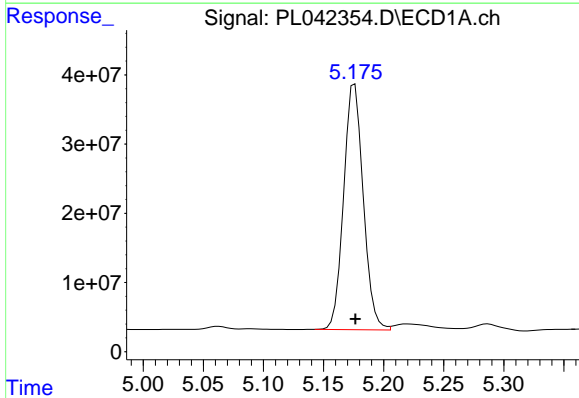


#7 delta-BHC  
 R.T.: 4.647 min  
 Delta R.T.: 0.000 min  
 Response: 380905479  
 Conc: 49.74 ng/ml

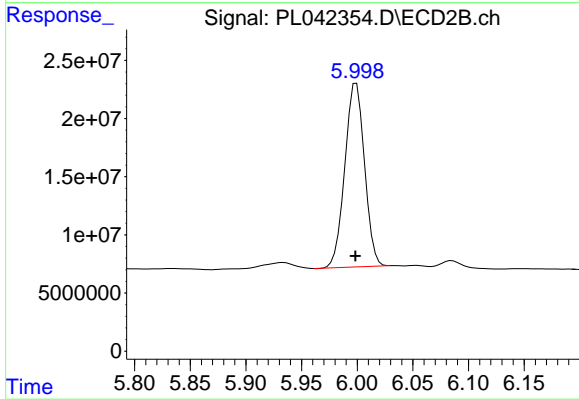
Instrument :  
 ECD\_L  
 ClientSampled :



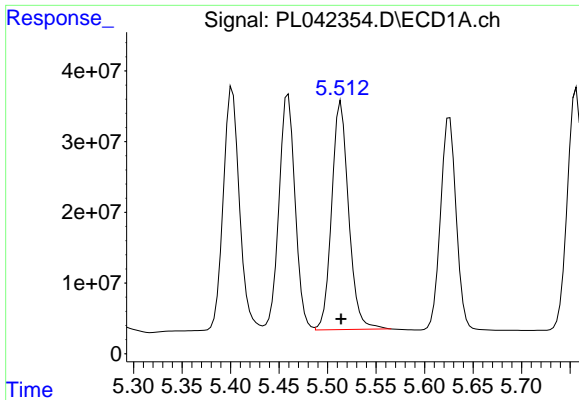
#7 delta-BHC  
 R.T.: 5.176 min  
 Delta R.T.: 0.000 min  
 Response: 200306511  
 Conc: 54.43 ng/ml



#8 Heptachlor epoxide  
 R.T.: 5.176 min  
 Delta R.T.: 0.000 min  
 Response: 403795426  
 Conc: 53.27 ng/ml

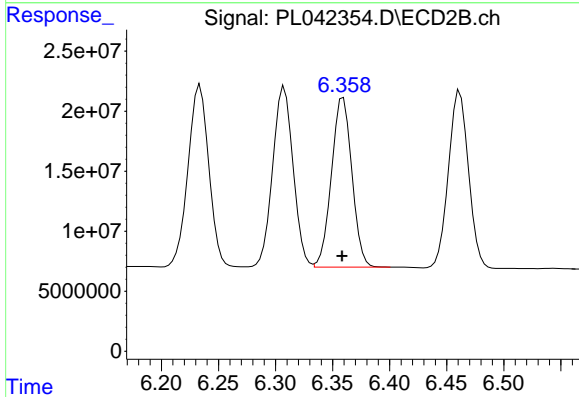


#8 Heptachlor epoxide  
 R.T.: 5.999 min  
 Delta R.T.: 0.000 min  
 Response: 194476907  
 Conc: 54.24 ng/ml

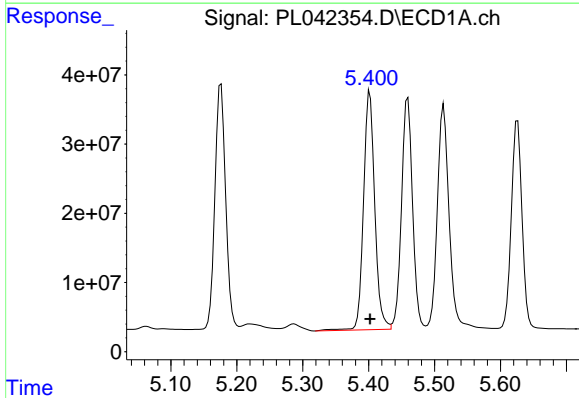


#9 Endosulfan I  
 R.T.: 5.514 min  
 Delta R.T.: 0.000 min  
 Response: 392218078  
 Conc: 56.68 ng/ml

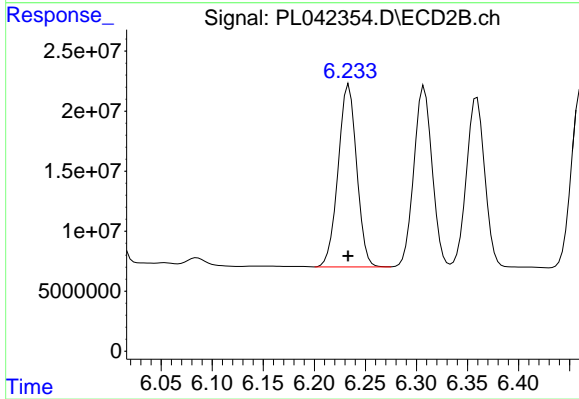
Instrument :  
 ECD\_L  
 ClientSampleId :



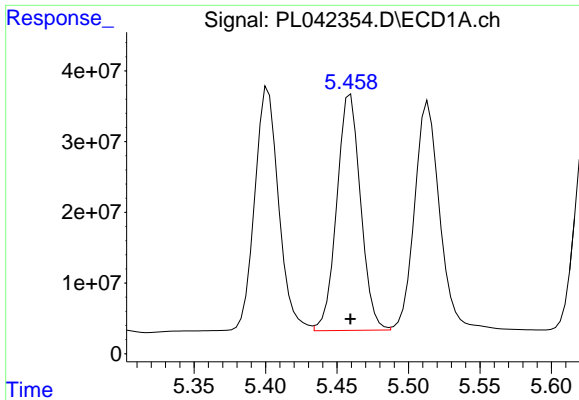
#9 Endosulfan I  
 R.T.: 6.359 min  
 Delta R.T.: 0.001 min  
 Response: 176125510  
 Conc: 55.77 ng/ml



#10 gamma-Chlordane  
 R.T.: 5.402 min  
 Delta R.T.: 0.000 min  
 Response: 408442790  
 Conc: 53.57 ng/ml

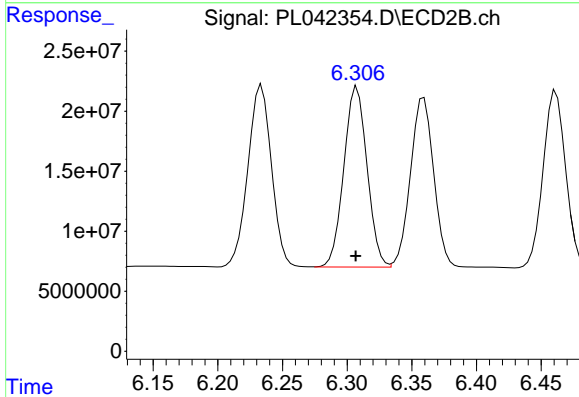


#10 gamma-Chlordane  
 R.T.: 6.234 min  
 Delta R.T.: 0.000 min  
 Response: 192609818  
 Conc: 56.58 ng/ml

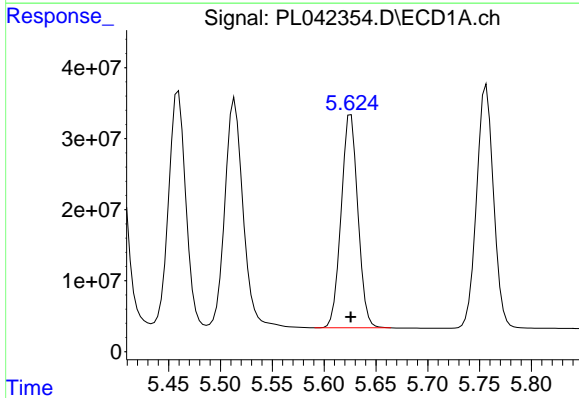


#11 alpha-Chlordane  
 R.T.: 5.459 min  
 Delta R.T.: 0.000 min  
 Response: 387433151  
 Conc: 51.61 ng/ml

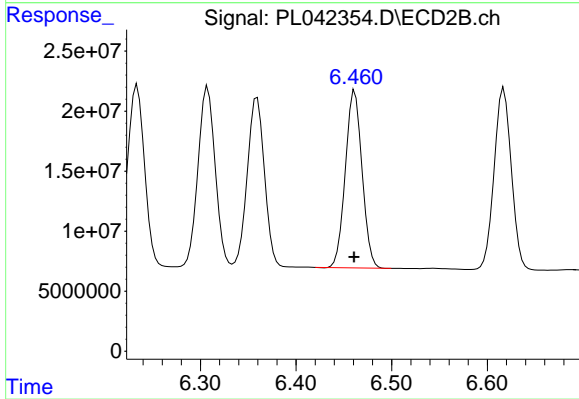
Instrument :  
 ECD\_L  
 ClientSampled :



#11 alpha-Chlordane  
 R.T.: 6.308 min  
 Delta R.T.: 0.001 min  
 Response: 187341431  
 Conc: 56.03 ng/ml

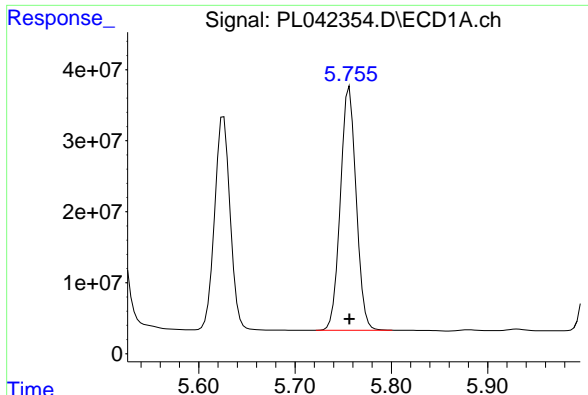


#12 4,4'-DDE  
 R.T.: 5.626 min  
 Delta R.T.: 0.000 min  
 Response: 337195015  
 Conc: 51.52 ng/ml



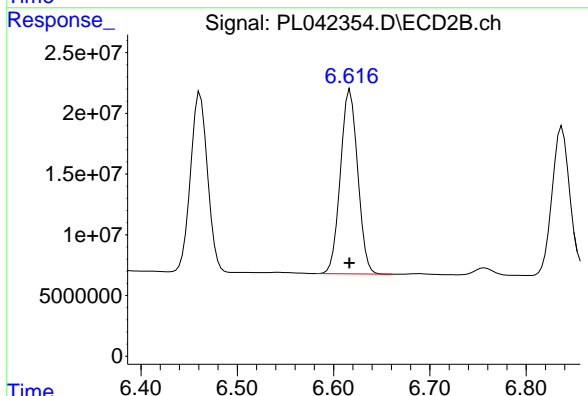
#12 4,4'-DDE  
 R.T.: 6.462 min  
 Delta R.T.: 0.000 min  
 Response: 180111439  
 Conc: 54.12 ng/ml



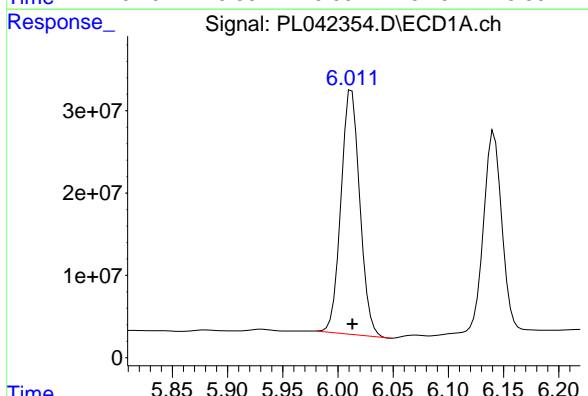


#13 Dieldrin  
 R.T.: 5.757 min  
 Delta R.T.: 0.000 min  
 Response: 389093193  
 Conc: 52.89 ng/ml

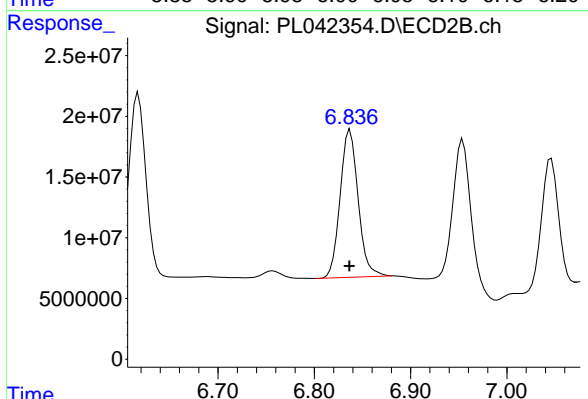
Instrument :  
 ECD\_L  
 ClientSampled :



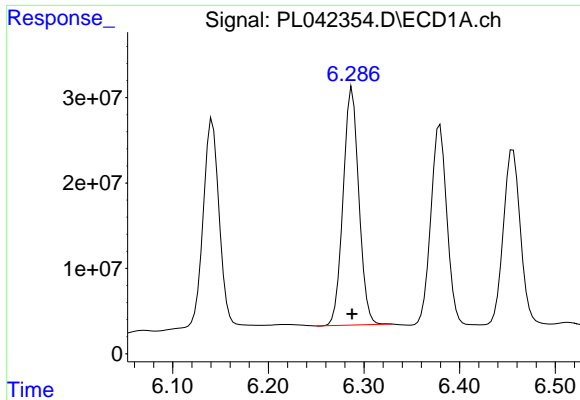
#13 Dieldrin  
 R.T.: 6.617 min  
 Delta R.T.: 0.000 min  
 Response: 188928830  
 Conc: 56.76 ng/ml



#14 Endrin  
 R.T.: 6.012 min  
 Delta R.T.: 0.000 min  
 Response: 353075424  
 Conc: 53.98 ng/ml

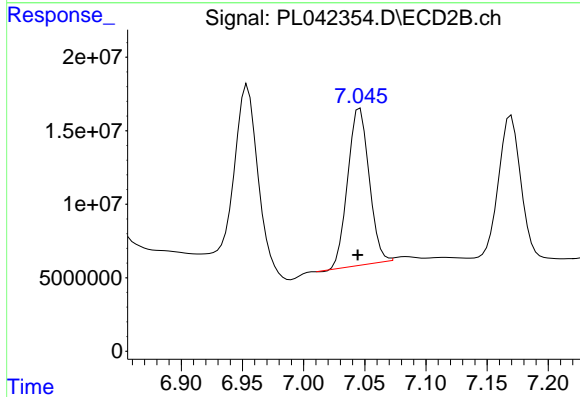


#14 Endrin  
 R.T.: 6.837 min  
 Delta R.T.: 0.001 min  
 Response: 157890481  
 Conc: 57.32 ng/ml

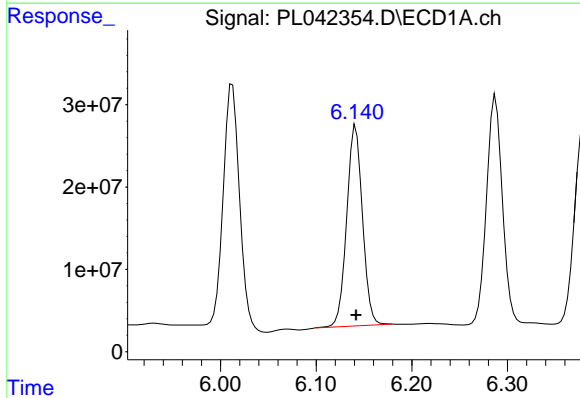


#15 Endosulfan II  
 R.T.: 6.288 min  
 Delta R.T.: 0.000 min  
 Response: 319154352  
 Conc: 51.06 ng/ml

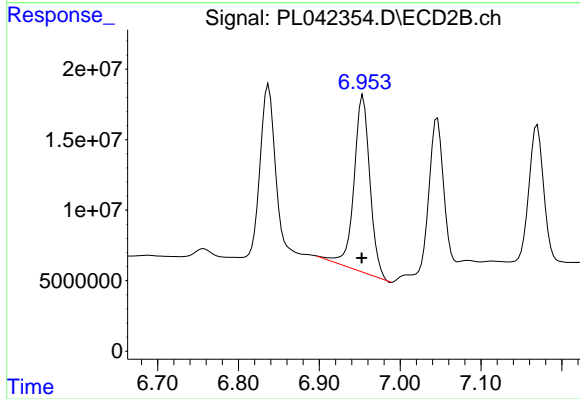
Instrument :  
 ECD\_L  
 ClientSampled :



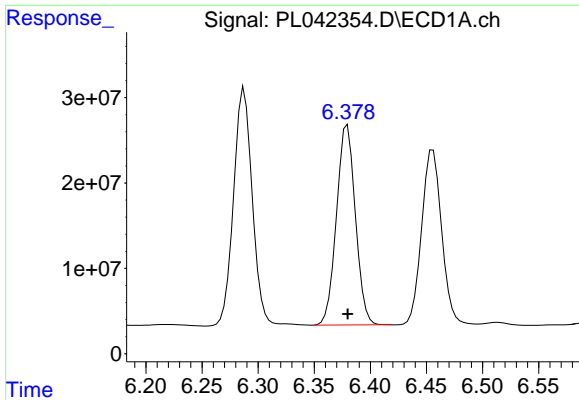
#15 Endosulfan II  
 R.T.: 7.046 min  
 Delta R.T.: 0.002 min  
 Response: 129588624  
 Conc: 46.92 ng/ml



#16 4,4'-DDD  
 R.T.: 6.142 min  
 Delta R.T.: 0.000 min  
 Response: 280857362  
 Conc: 53.04 ng/ml

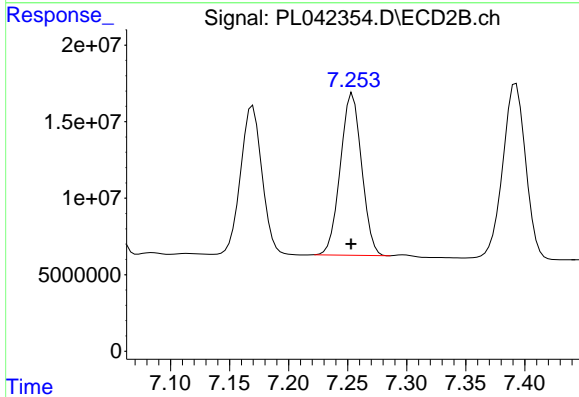


#16 4,4'-DDD  
 R.T.: 6.954 min  
 Delta R.T.: 0.002 min  
 Response: 172481565  
 Conc: 65.53 ng/ml

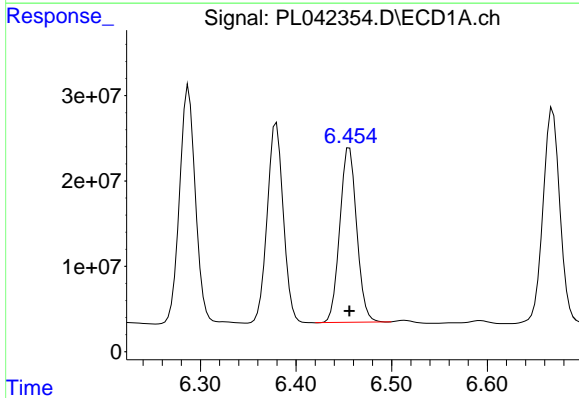


#17 4,4'-DDT  
 R.T.: 6.380 min  
 Delta R.T.: 0.000 min  
 Response: 274697525  
 Conc: 49.35 ng/ml

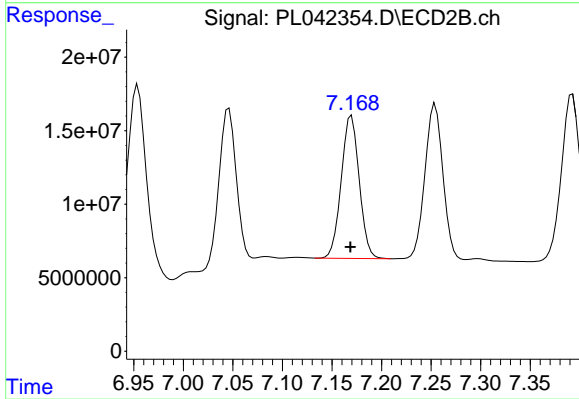
Instrument :  
 ECD\_L  
 ClientSampled :



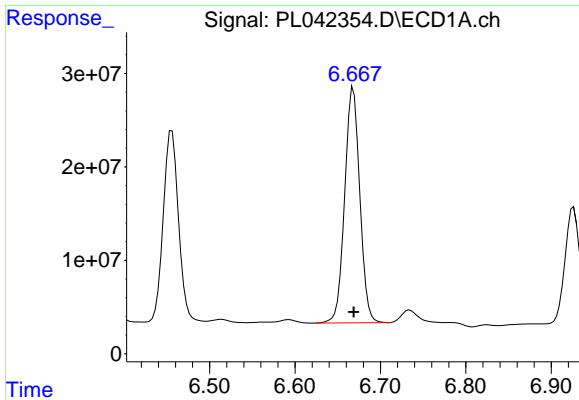
#17 4,4'-DDT  
 R.T.: 7.254 min  
 Delta R.T.: 0.001 min  
 Response: 132896841  
 Conc: 50.33 ng/ml



#18 Endrin aldehyde  
 R.T.: 6.456 min  
 Delta R.T.: 0.000 min  
 Response: 252104945  
 Conc: 48.49 ng/ml

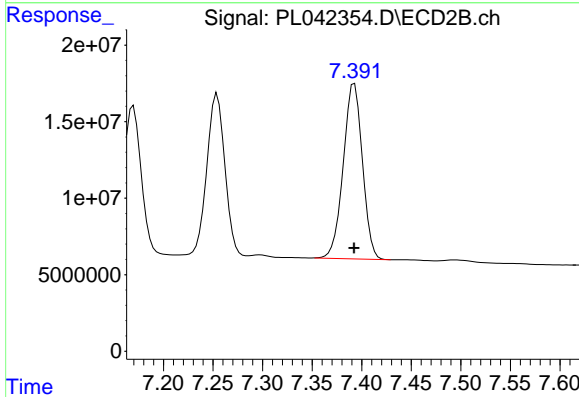


#18 Endrin aldehyde  
 R.T.: 7.170 min  
 Delta R.T.: 0.001 min  
 Response: 122646260  
 Conc: 53.50 ng/ml

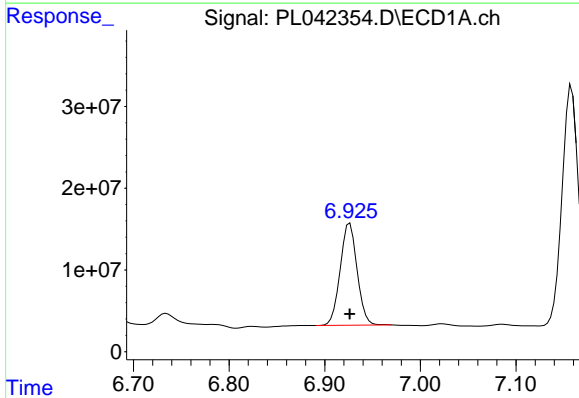


#19 Endosulfan Sulfate  
 R.T.: 6.668 min  
 Delta R.T.: 0.000 min  
 Response: 309960543  
 Conc: 49.68 ng/ml

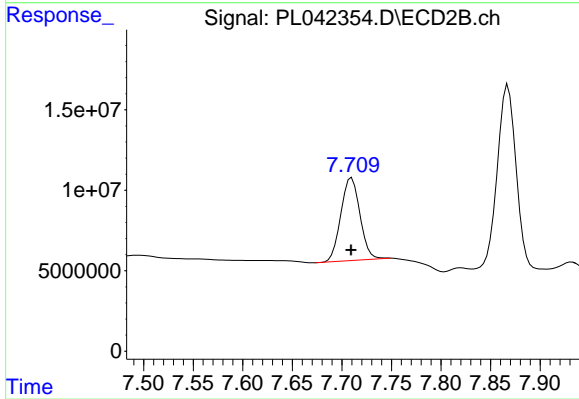
Instrument :  
 ECD\_L  
 ClientSampled :



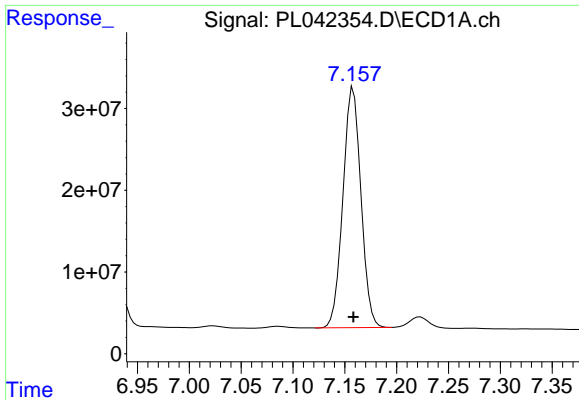
#19 Endosulfan Sulfate  
 R.T.: 7.393 min  
 Delta R.T.: 0.000 min  
 Response: 154225506  
 Conc: 55.46 ng/ml



#20 Methoxychlor  
 R.T.: 6.926 min  
 Delta R.T.: 0.000 min  
 Response: 153793052  
 Conc: 48.76 ng/ml



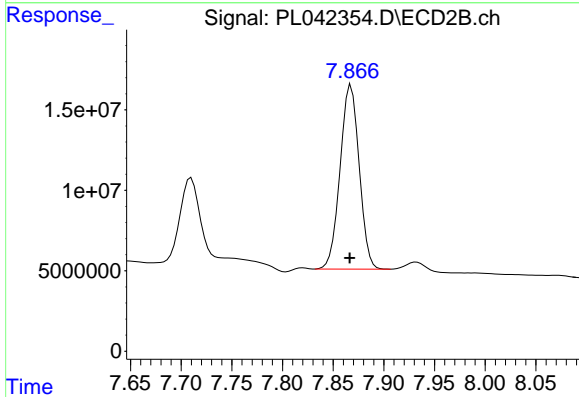
#20 Methoxychlor  
 R.T.: 7.710 min  
 Delta R.T.: 0.000 min  
 Response: 69336520  
 Conc: 50.85 ng/ml



#21 Endrin ketone

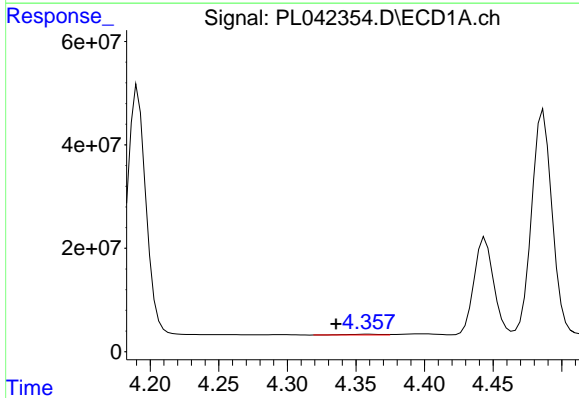
R.T.: 7.158 min  
 Delta R.T.: 0.000 min  
 Response: 355751889  
 Conc: 51.38 ng/ml

Instrument :  
 ECD\_L  
 ClientSampled :



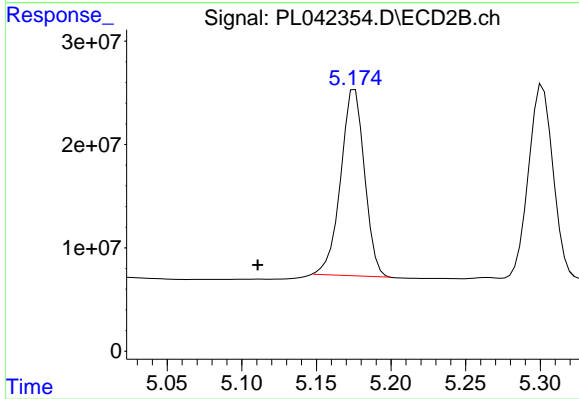
#21 Endrin ketone

R.T.: 7.868 min  
 Delta R.T.: 0.001 min  
 Response: 149984079  
 Conc: 54.26 ng/ml



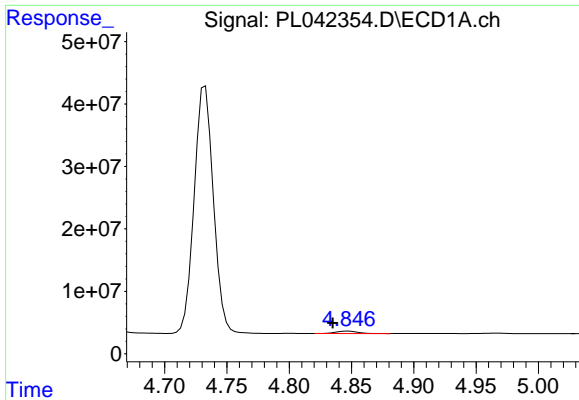
#23 Chlordane-1

R.T.: 4.359 min  
 Delta R.T.: 0.024 min  
 Response: 2417446  
 Conc: 8.74 ng/ml



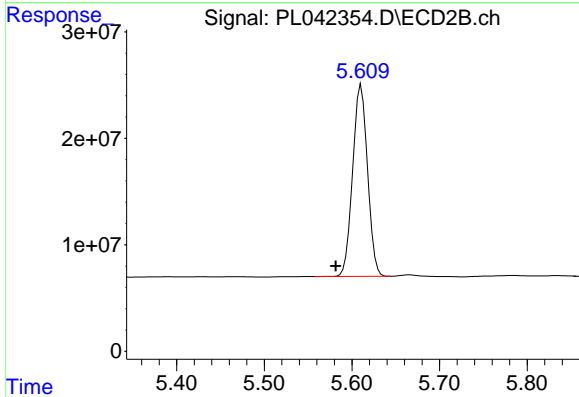
#23 Chlordane-1

R.T.: 5.176 min  
 Delta R.T.: 0.065 min  
 Response: 200306511  
 Conc: 1506.83 ng/ml

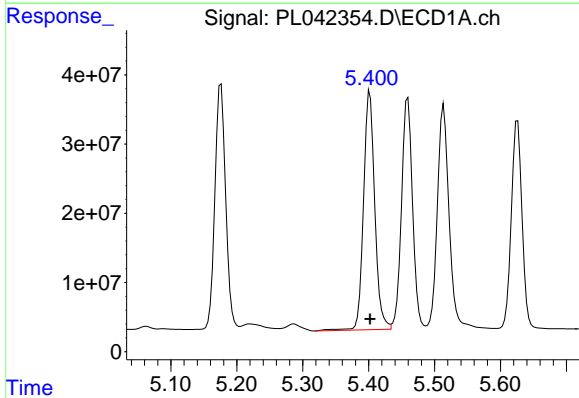


#24 Chlordane-2  
 R.T.: 4.847 min  
 Delta R.T.: 0.012 min  
 Response: 4864154  
 Conc: 17.31 ng/ml

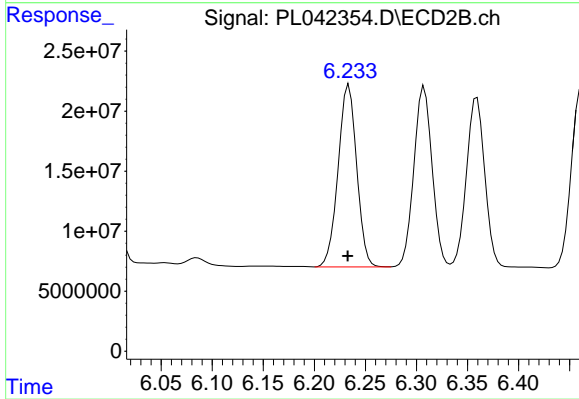
Instrument :  
 ECD\_L  
 ClientSampleId :



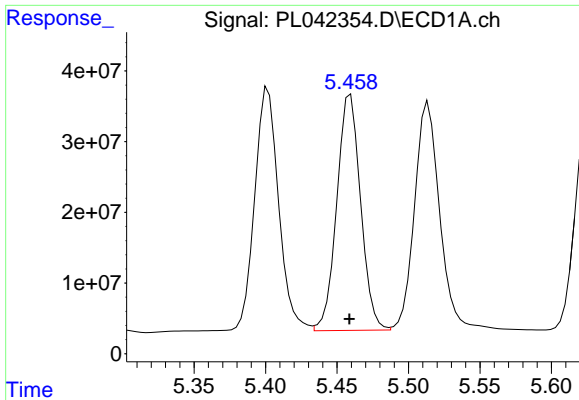
#24 Chlordane-2  
 R.T.: 5.611 min  
 Delta R.T.: 0.029 min  
 Response: 212600254  
 Conc: 1524.63 ng/ml



#25 Chlordane-3  
 R.T.: 5.402 min  
 Delta R.T.: 0.000 min  
 Response: 408442790  
 Conc: 465.95 ng/ml

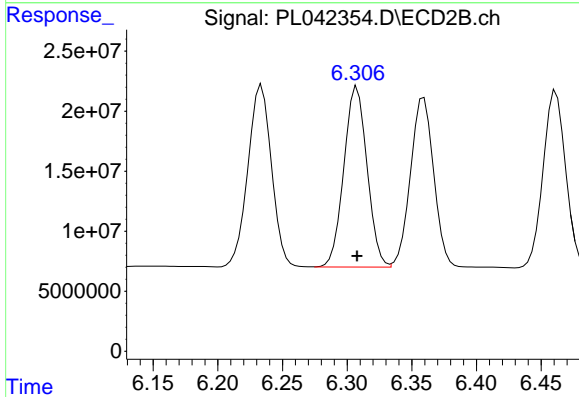


#25 Chlordane-3  
 R.T.: 6.234 min  
 Delta R.T.: 0.001 min  
 Response: 192609818  
 Conc: 409.87 ng/ml

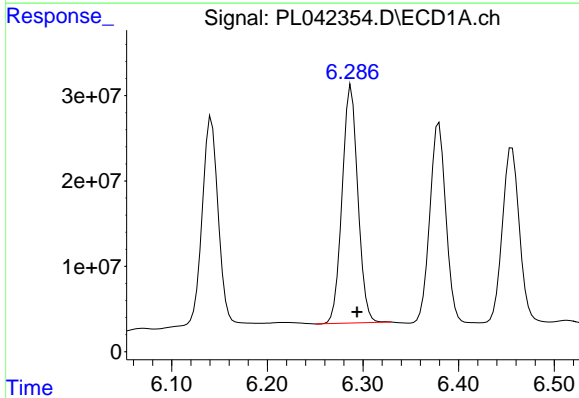


#26 Chlordane-4  
 R.T.: 5.459 min  
 Delta R.T.: 0.000 min  
 Response: 387433151  
 Conc: 510.51 ng/ml

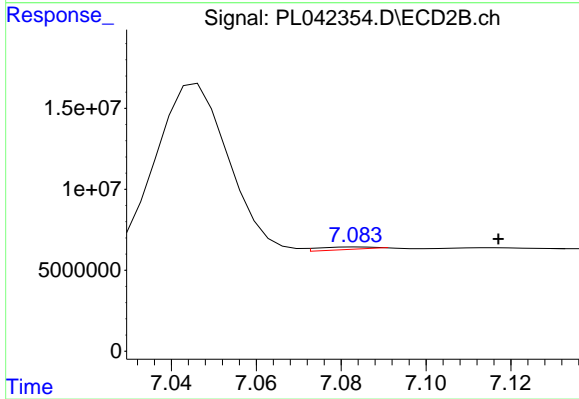
Instrument :  
 ECD\_L  
 ClientSampleId :



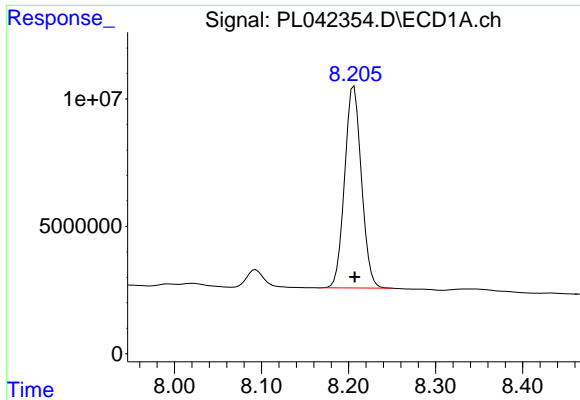
#26 Chlordane-4  
 R.T.: 6.308 min  
 Delta R.T.: 0.000 min  
 Response: 187341431  
 Conc: 342.39 ng/ml



#27 Chlordane-5  
 R.T.: 6.288 min  
 Delta R.T.: -0.006 min  
 Response: 319154352  
 Conc: 1071.09 ng/ml



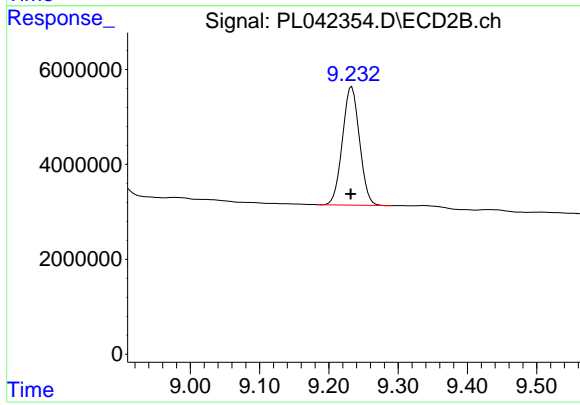
#27 Chlordane-5  
 R.T.: 7.085 min  
 Delta R.T.: -0.032 min  
 Response: 2132509  
 Conc: 22.17 ng/ml



#28 Decachlorobiphenyl

R.T.: 8.206 min  
Delta R.T.: 0.000 min  
Response: 106241445  
Conc: 16.86 ng/ml

Instrument :  
ECD\_L  
ClientSampleId :



#28 Decachlorobiphenyl

R.T.: 9.233 min  
Delta R.T.: 0.002 min  
Response: 42646199  
Conc: 17.68 ng/ml