

Data Path : Z:\pestpcbsrv\HPCHEM1\ECD_L\Data\PL112118\
 Data File : PL042376.D
 Signal(s) : Signal #1: ECD1A.ch Signal #2: ECD2B.ch
 Acq On : 20 Nov 2018 21:14
 Operator : AJ\SJ
 Sample : J6006-01
 Misc :
 ALS Vial : 35 Sample Multiplier: 1

Instrument :
 ECD_L
 ClientSampled :

Integration File signal 1: autoint1.e
 Integration File signal 2: autoint2.e
 Quant Time: Nov 21 00:06:41 2018
 Quant Method : Z:\pestpcbsrv\HPCHEM1\ECD_L\methods\PL112018.M
 Quant Title : GC Extractables
 QLast Update : Tue Nov 20 02:29:59 2018
 Response via : Initial Calibration
 Integrator: ChemStation

Volume Inj. : 2 µl
 Signal #1 Phase : ZB-MR1 Signal #2 Phase: ZB-MR2
 Signal #1 Info : 30M x 0.32mm x0.5 Signal #2 Info : 30M x 0.32mm x0.25µm

Compound	RT#1	RT#2	Resp#1	Resp#2	ng/ml	ng/ml

System Monitoring Compounds						
1) SA Tetrachlo...	3.468	4.102	60836396	33867216	10.340	11.775
28) SA Decachlor...	8.206	9.233	83911280	33768189	13.315	14.001
Target Compounds						
2) A alpha-BHC	3.858f	4.523f	14026238	157278	1.554	0.037 #
3) MA gamma-BHC...	4.202	4.785	1821731	3869069	0.221	0.979 #
4) MA Heptachlor	4.485	5.261f	345.2E6	-113003	39.674	N.D. #
5) MB Aldrin	4.740	5.629	-1102743588	535.4E6	N.D.	139.410
6) B beta-BHC	4.410f	4.934	13052810	15448598	3.684	9.792 #
7) B delta-BHC	4.656	5.186	62602114	-3902756	8.175	N.D. #
8) B Heptachlo...	5.198	5.986	404.5E6	1678.7E6	53.370	468.167 #
9) A Endosulfan I	5.533	6.335	136.4E6	65365398	19.703	20.698
11) B alpha-Chl...	5.445	6.302	844.8E6	19715064	112.540	5.896 #
12) B 4,4'-DDE	5.583f	6.462	402.3E6	737.5E6	61.463	221.580 #
13) MA Dieldrin	5.750	6.604	2391.5E6	247.2E6	325.071	74.280 #
14) MA Endrin	6.007	6.823	-617838276	970.8E6	N.D.	352.425
15) B Endosulfa...	6.271	7.027	762.2E6	17381396	121.942	6.294 #
16) A 4,4'-DDD	6.202f	6.960	948.3E6	828.2E6	179.092	314.664 #
17) MA 4,4'-DDT	6.375	7.255	2003.8E6	-249407558	359.952	N.D. #
18) B Endrin al...	6.467	7.171	49130125	36187615	9.451	15.784 #
19) B Endosulfa...	6.660	7.360	119.6E6	-4085320	19.164	N.D. #
20) A Methoxychlor	6.906	7.699	197.5E6	2603477	62.629	1.909 #
23) Chlordane-1	4.323	5.119	1537365	4112303	5.561	30.935 #
24) Chlordane-2	4.896	5.629	1172.5E6	535.4E6	4172.129	3839.469
26) Chlordane-4	5.445	6.302	844.8E6	19715064	1113.179	36.032 #
27) Chlordane-5	6.271	7.081	762.2E6	264.4E6	2557.942	2748.654

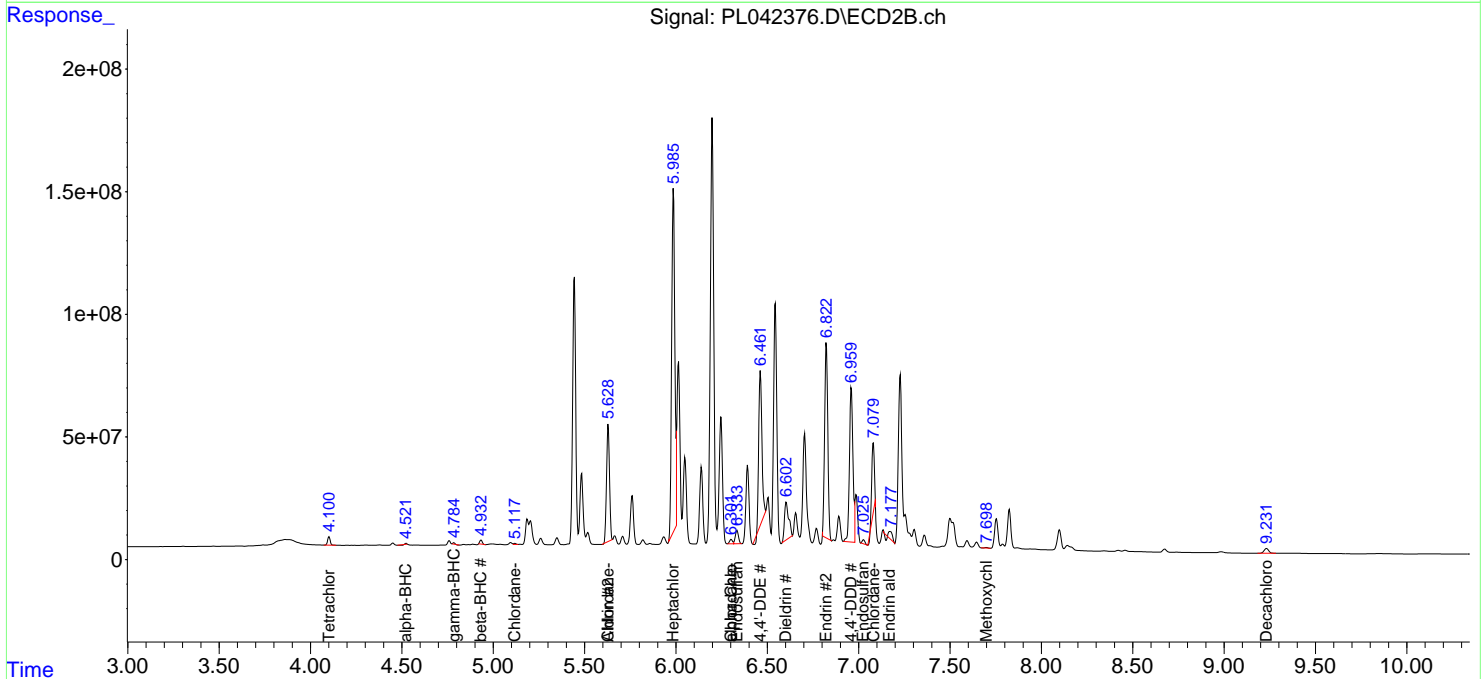
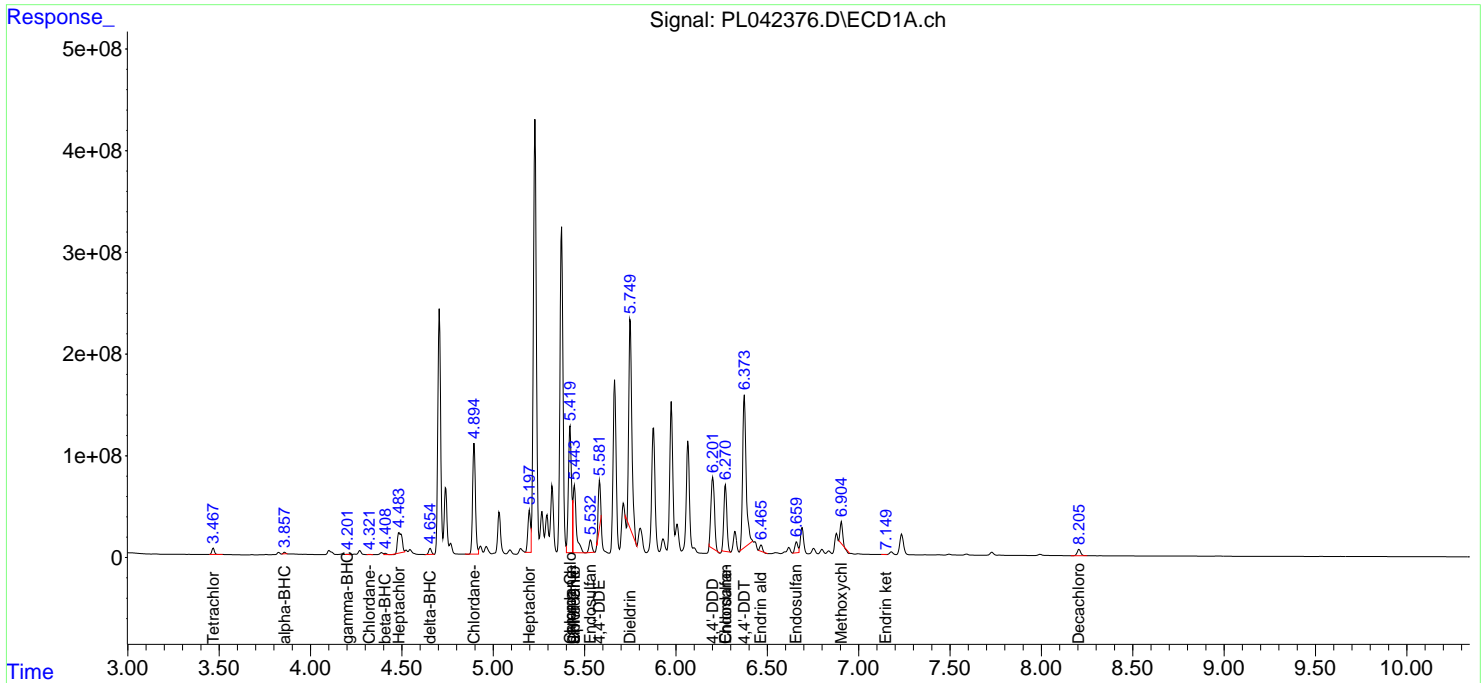
(f)=RT Delta > 1/2 Window (#)=Amounts differ by > 25% (m)=manual int.

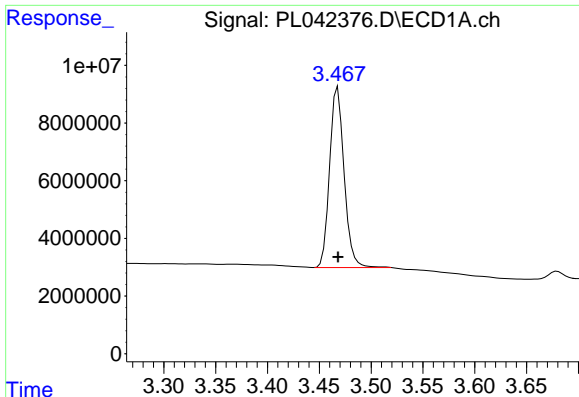
Data Path : Z:\pestpcbsrv\HPCHEM1\ECD_L\Data\PL112118\
 Data File : PL042376.D
 Signal(s) : Signal #1: ECD1A.ch Signal #2: ECD2B.ch
 Acq On : 20 Nov 2018 21:14
 Operator : AJ\SJ
 Sample : J6006-01
 Misc :
 ALS Vial : 35 Sample Multiplier: 1

Instrument :
 ECD_L
 ClientSampled :

Integration File signal 1: autoint1.e
 Integration File signal 2: autoint2.e
 Quant Time: Nov 21 00:06:41 2018
 Quant Method : Z:\pestpcbsrv\HPCHEM1\ECD_L\methods\PL112018.M
 Quant Title : GC Extractables
 QLast Update : Tue Nov 20 02:29:59 2018
 Response via : Initial Calibration
 Integrator: ChemStation

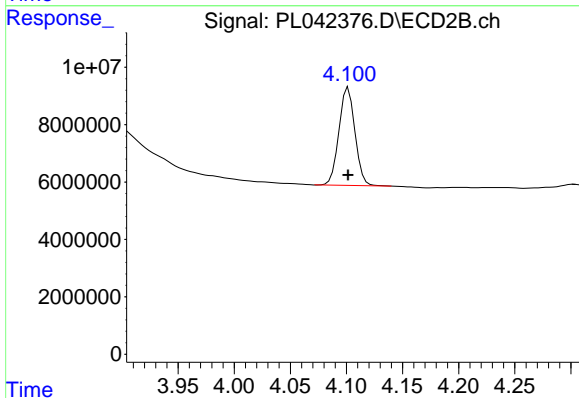
Volume Inj. : 2 µl
 Signal #1 Phase : ZB-MR1 Signal #2 Phase: ZB-MR2
 Signal #1 Info : 30M x 0.32mm x0.5 Signal #2 Info : 30M x 0.32mm x0.25µm



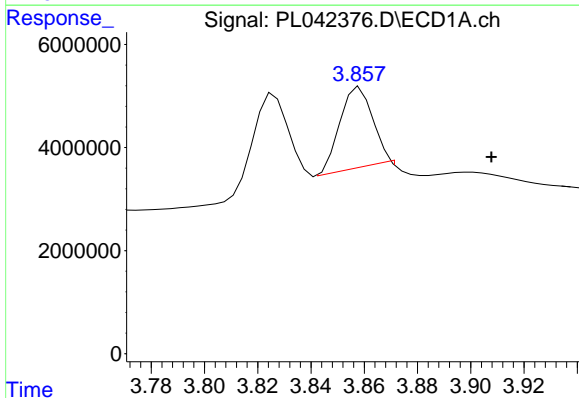


#1 Tetrachloro-m-xylene
 R.T.: 3.468 min
 Delta R.T.: 0.000 min
 Response: 60836396
 Conc: 10.34 ng/ml

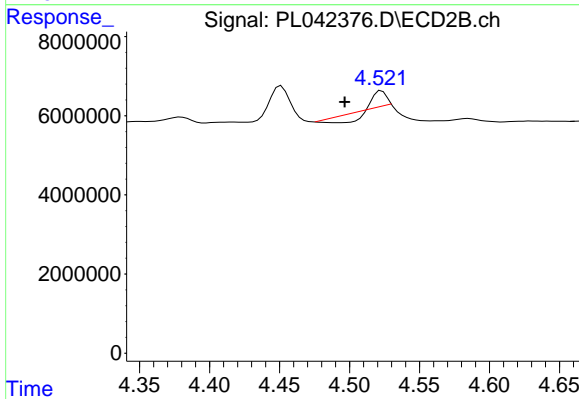
Instrument :
 ECD_L
 ClientSampleId :



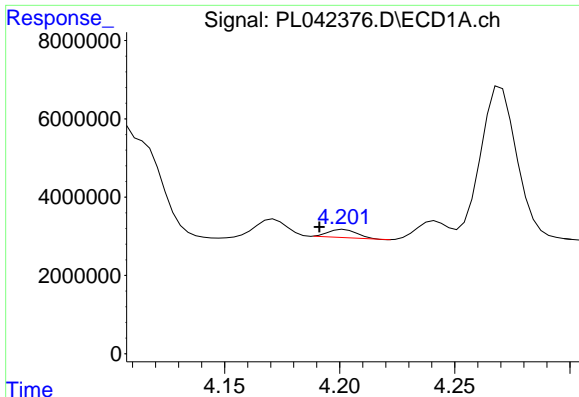
#1 Tetrachloro-m-xylene
 R.T.: 4.102 min
 Delta R.T.: 0.000 min
 Response: 33867216
 Conc: 11.78 ng/ml



#2 alpha-BHC
 R.T.: 3.858 min
 Delta R.T.: -0.049 min
 Response: 14026238
 Conc: 1.55 ng/ml

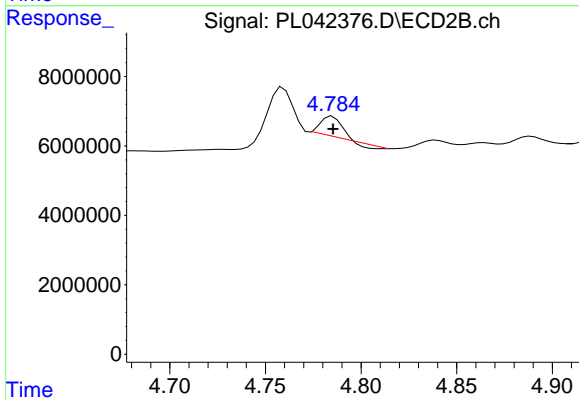


#2 alpha-BHC
 R.T.: 4.523 min
 Delta R.T.: 0.026 min
 Response: 157278
 Conc: 0.04 ng/ml

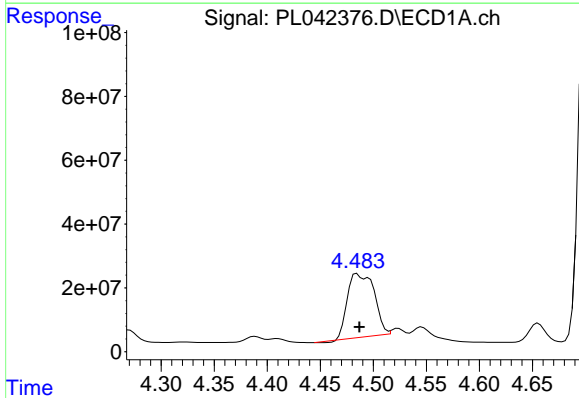


#3 gamma-BHC (Lindane)
 R.T.: 4.202 min
 Delta R.T.: 0.011 min
 Response: 1821731
 Conc: 0.22 ng/ml

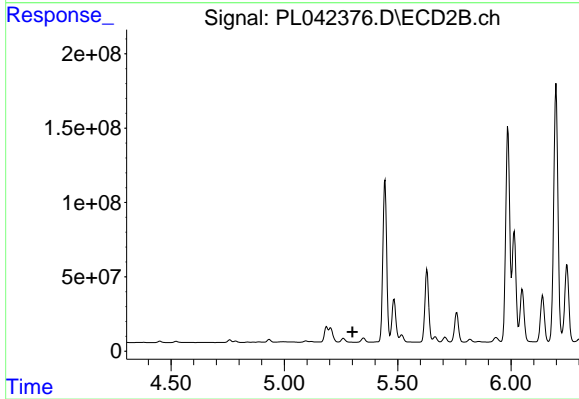
Instrument :
 ECD_L
 ClientSampleId :



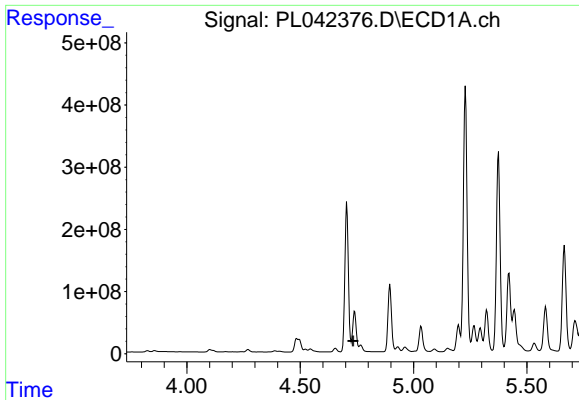
#3 gamma-BHC (Lindane)
 R.T.: 4.785 min
 Delta R.T.: 0.000 min
 Response: 3869069
 Conc: 0.98 ng/ml



#4 Heptachlor
 R.T.: 4.485 min
 Delta R.T.: -0.002 min
 Response: 345217828
 Conc: 39.67 ng/ml



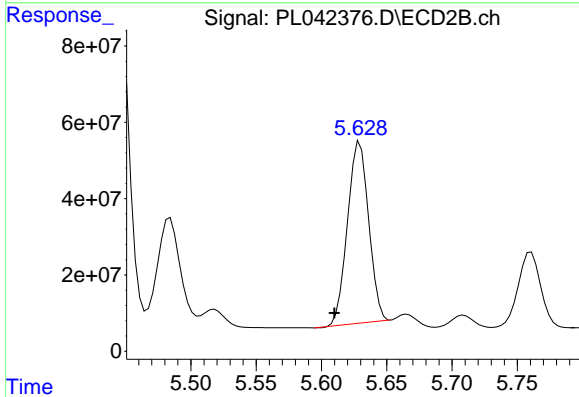
#4 Heptachlor
 R.T.: 5.261 min
 Delta R.T.: -0.040 min
 Response: -113003
 Conc: N.D.



#5 Aldrin

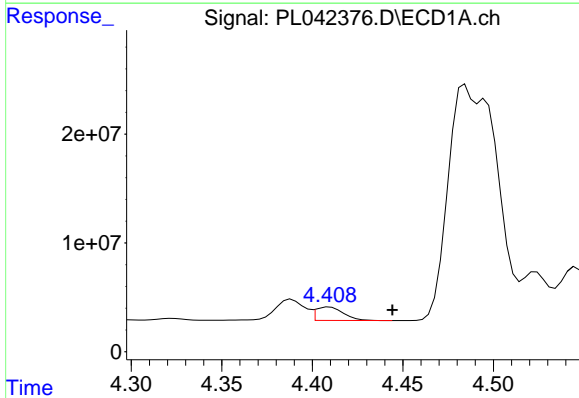
R.T.: 4.740 min
 Delta R.T.: 0.007 min
 Response: -1102743588
 Conc: N.D.

Instrument :
 ECD_L
 ClientSampled :



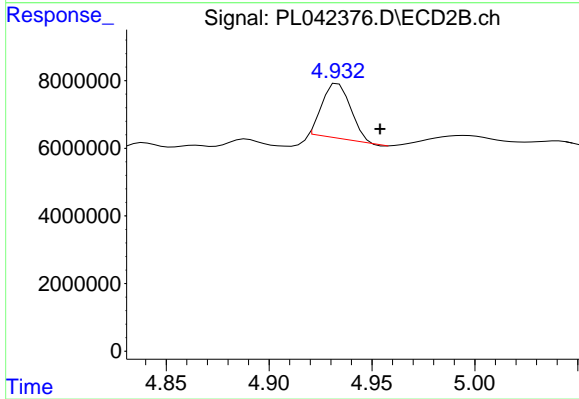
#5 Aldrin

R.T.: 5.629 min
 Delta R.T.: 0.020 min
 Response: 535391262
 Conc: 139.41 ng/ml



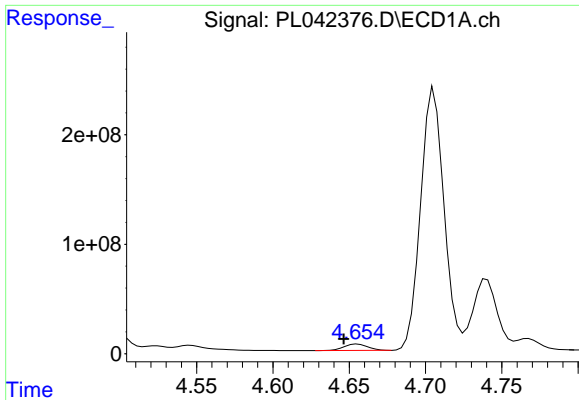
#6 beta-BHC

R.T.: 4.410 min
 Delta R.T.: -0.035 min
 Response: 13052810
 Conc: 3.68 ng/ml



#6 beta-BHC

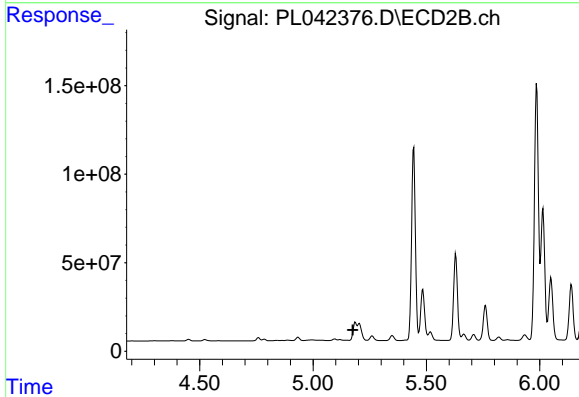
R.T.: 4.934 min
 Delta R.T.: -0.020 min
 Response: 15448598
 Conc: 9.79 ng/ml



#7 delta-BHC

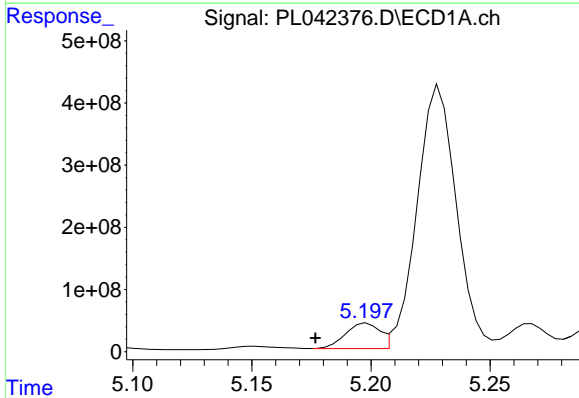
R.T.: 4.656 min
 Delta R.T.: 0.009 min
 Response: 62602114
 Conc: 8.17 ng/ml

Instrument :
 ECD_L
 ClientSampled :



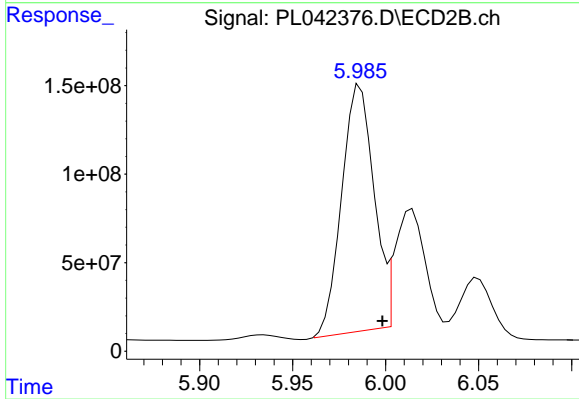
#7 delta-BHC

R.T.: 5.186 min
 Delta R.T.: 0.011 min
 Response: -3902756
 Conc: N.D.



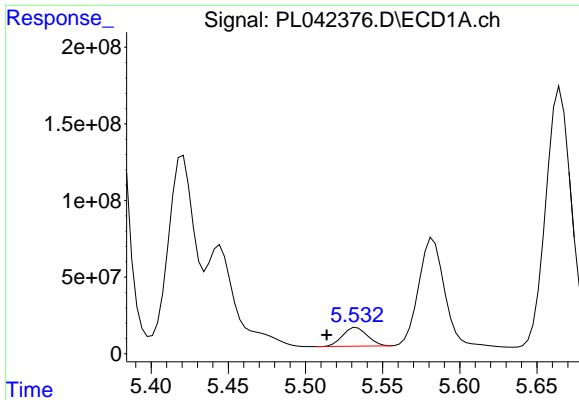
#8 Heptachlor epoxide

R.T.: 5.198 min
 Delta R.T.: 0.022 min
 Response: 404524487
 Conc: 53.37 ng/ml



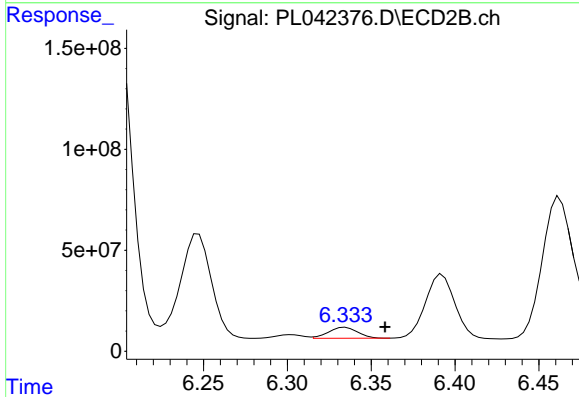
#8 Heptachlor epoxide

R.T.: 5.986 min
 Delta R.T.: -0.012 min
 Response: 1678653697
 Conc: 468.17 ng/ml

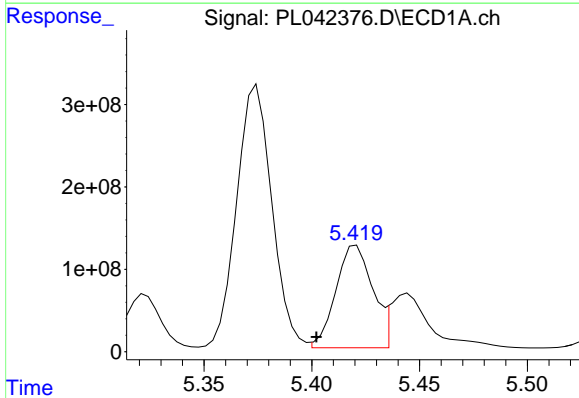


#9 Endosulfan I
 R.T.: 5.533 min
 Delta R.T.: 0.019 min
 Response: 136350991
 Conc: 19.70 ng/ml

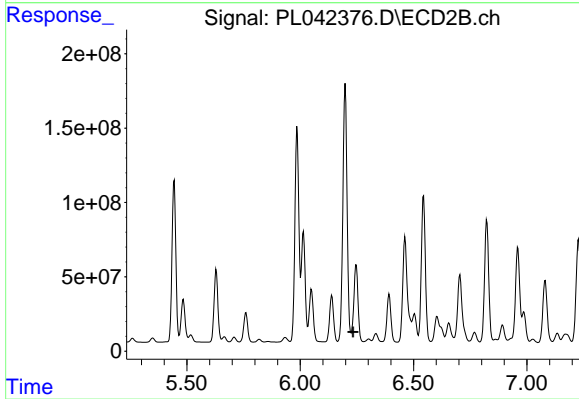
Instrument :
 ECD_L
 ClientSampled :



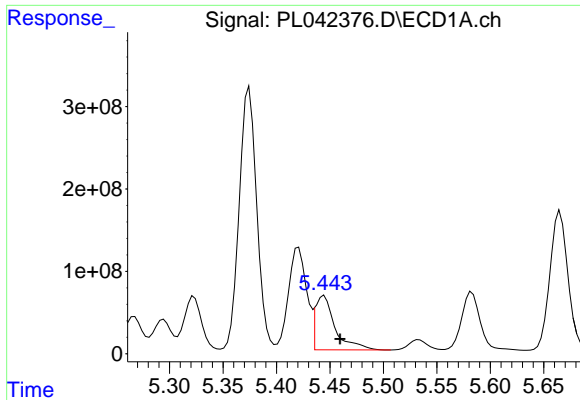
#9 Endosulfan I
 R.T.: 6.335 min
 Delta R.T.: -0.024 min
 Response: 65365398
 Conc: 20.70 ng/ml



#10 gamma-Chlordane
 R.T.: 5.421 min
 Delta R.T.: 0.018 min
 Response: 1472740201
 Conc: 193.16 ng/ml

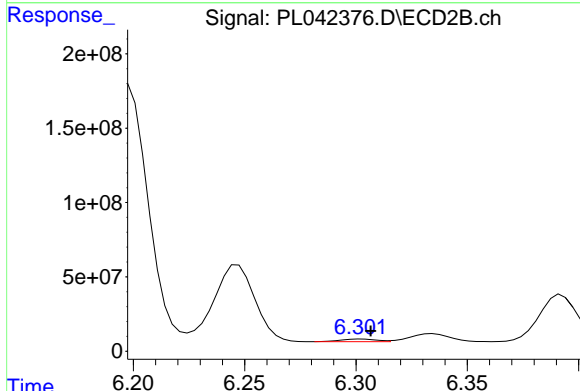


#10 gamma-Chlordane
 R.T.: 6.247 min
 Delta R.T.: 0.014 min
 Response: -872745250
 Conc: N.D.

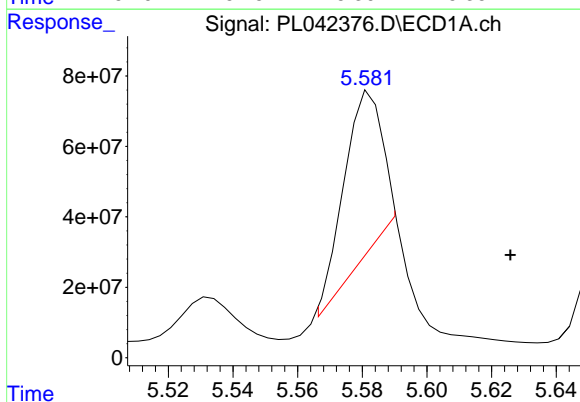


#11 alpha-Chlordane
 R.T.: 5.445 min
 Delta R.T.: -0.015 min
 Response: 844814369
 Conc: 112.54 ng/ml

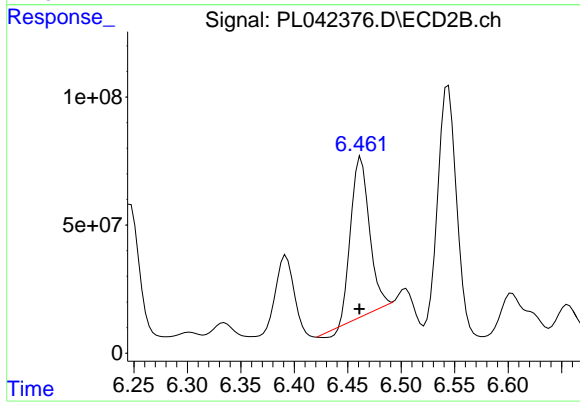
Instrument :
 ECD_L
 ClientSampleId :



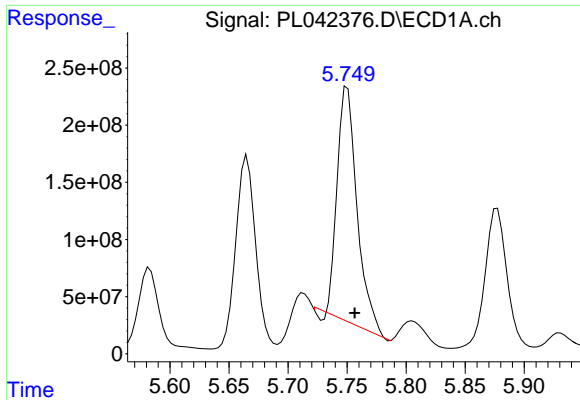
#11 alpha-Chlordane
 R.T.: 6.302 min
 Delta R.T.: -0.004 min
 Response: 19715064
 Conc: 5.90 ng/ml



#12 4,4'-DDE
 R.T.: 5.583 min
 Delta R.T.: -0.043 min
 Response: 402285899
 Conc: 61.46 ng/ml



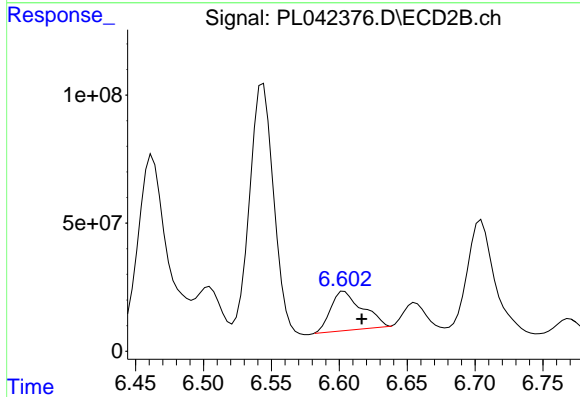
#12 4,4'-DDE
 R.T.: 6.462 min
 Delta R.T.: 0.002 min
 Response: 737452678
 Conc: 221.58 ng/ml



#13 Dieldrin

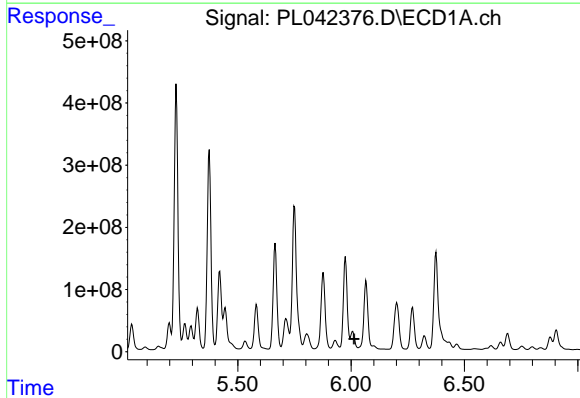
R.T.: 5.750 min
 Delta R.T.: -0.006 min
 Response: 2391473931
 Conc: 325.07 ng/ml

Instrument :
 ECD_L
 ClientSampled :



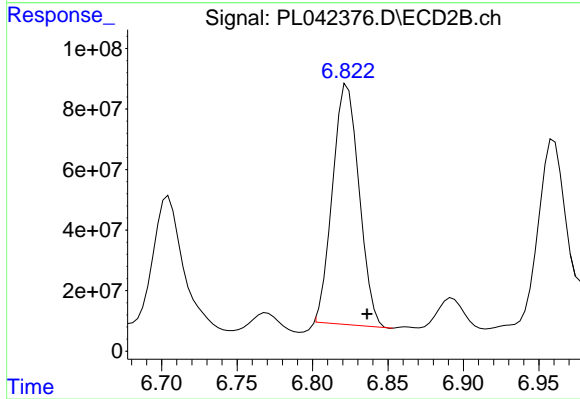
#13 Dieldrin

R.T.: 6.604 min
 Delta R.T.: -0.013 min
 Response: 247245007
 Conc: 74.28 ng/ml



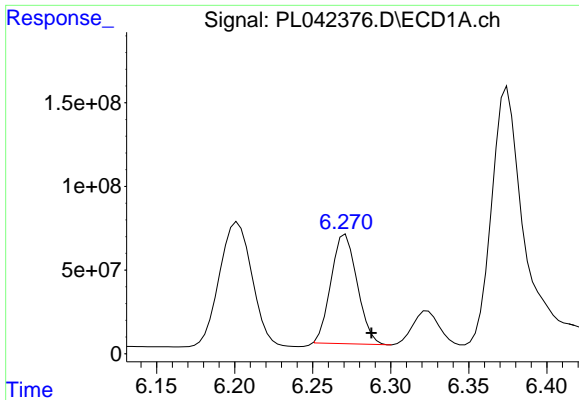
#14 Endrin

R.T.: 6.007 min
 Delta R.T.: -0.006 min
 Response: -617838276
 Conc: N.D.



#14 Endrin

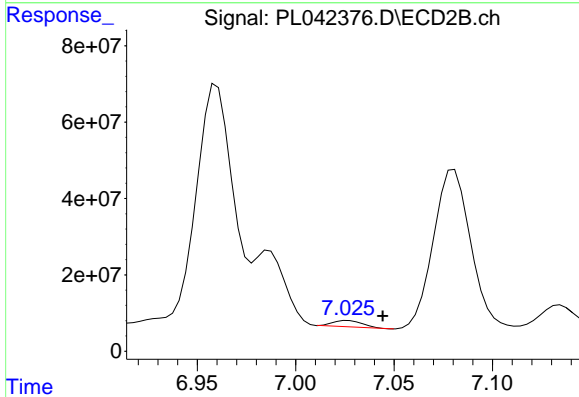
R.T.: 6.823 min
 Delta R.T.: -0.013 min
 Response: 970772130
 Conc: 352.43 ng/ml



#15 Endosulfan II

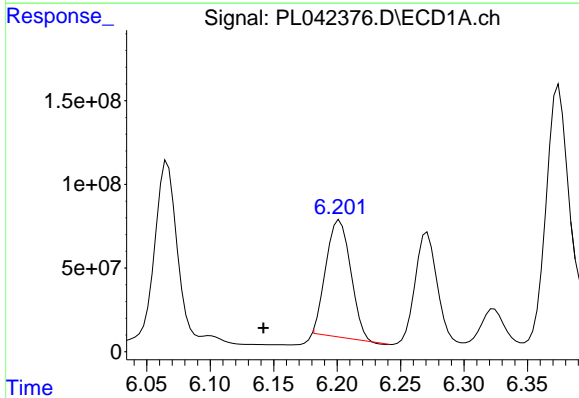
R.T.: 6.271 min
 Delta R.T.: -0.017 min
 Response: 762195484
 Conc: 121.94 ng/ml

Instrument :
 ECD_L
 ClientSampled :



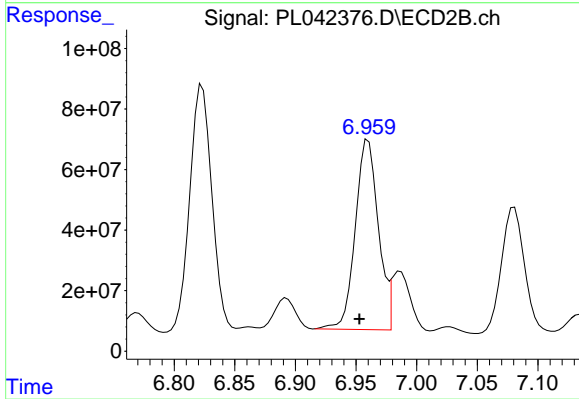
#15 Endosulfan II

R.T.: 7.027 min
 Delta R.T.: -0.018 min
 Response: 17381396
 Conc: 6.29 ng/ml



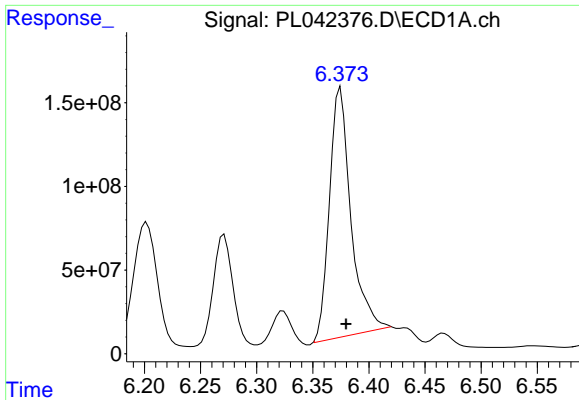
#16 4,4'-DDD

R.T.: 6.202 min
 Delta R.T.: 0.060 min
 Response: 948258465
 Conc: 179.09 ng/ml



#16 4,4'-DDD

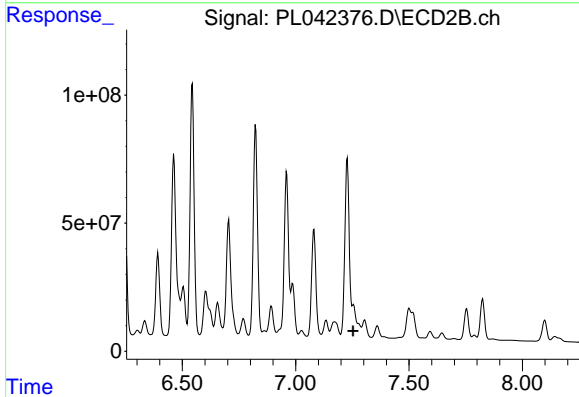
R.T.: 6.960 min
 Delta R.T.: 0.007 min
 Response: 828238603
 Conc: 314.66 ng/ml



#17 4,4'-DDT

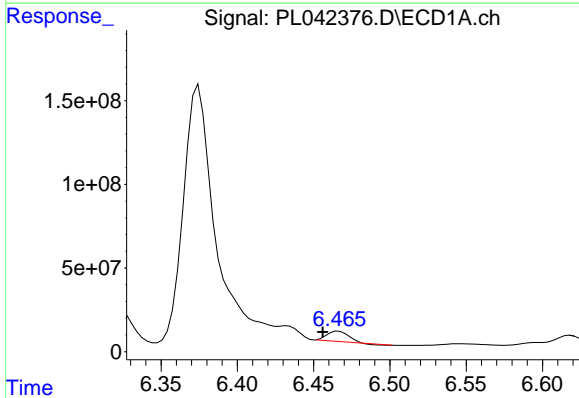
R.T.: 6.375 min
 Delta R.T.: -0.005 min
 Response: 2003801224
 Conc: 359.95 ng/ml

Instrument :
 ECD_L
 ClientSampleId :



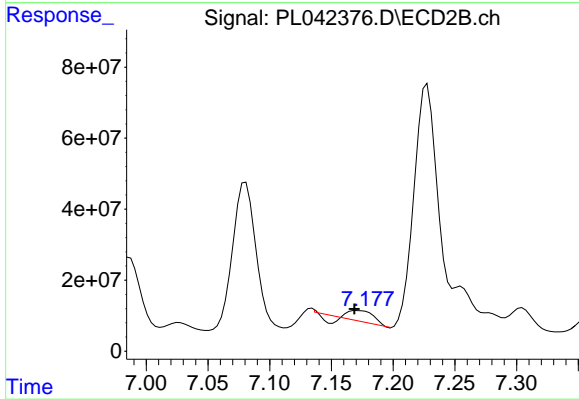
#17 4,4'-DDT

R.T.: 7.255 min
 Delta R.T.: 0.002 min
 Response: -249407558
 Conc: N.D.



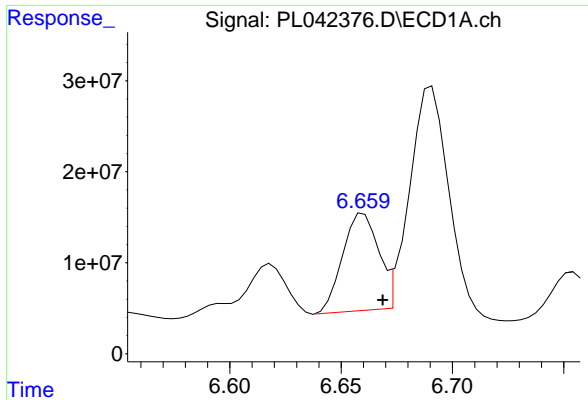
#18 Endrin aldehyde

R.T.: 6.467 min
 Delta R.T.: 0.011 min
 Response: 49130125
 Conc: 9.45 ng/ml



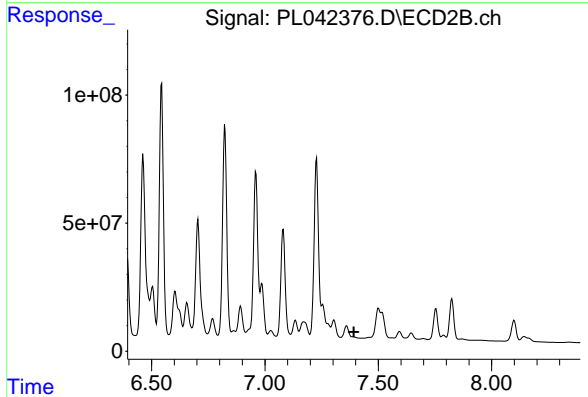
#18 Endrin aldehyde

R.T.: 7.171 min
 Delta R.T.: 0.002 min
 Response: 36187615
 Conc: 15.78 ng/ml

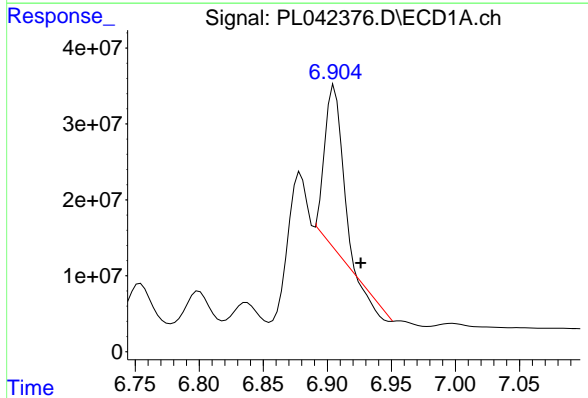


#19 Endosulfan Sulfate
 R.T.: 6.660 min
 Delta R.T.: -0.009 min
 Response: 119572190
 Conc: 19.16 ng/ml

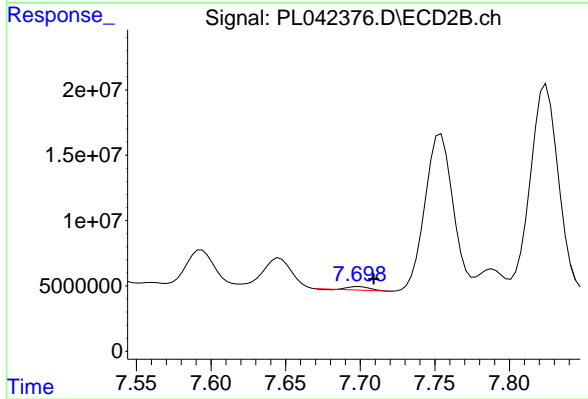
Instrument :
 ECD_L
 ClientSampleId :



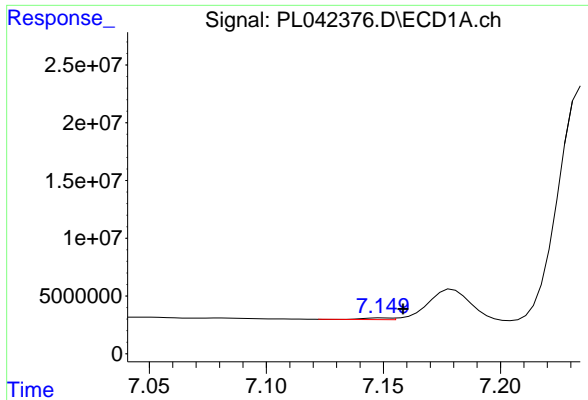
#19 Endosulfan Sulfate
 R.T.: 7.360 min
 Delta R.T.: -0.032 min
 Response: -4085320
 Conc: N.D.



#20 Methoxychlor
 R.T.: 6.906 min
 Delta R.T.: -0.021 min
 Response: 197522461
 Conc: 62.63 ng/ml

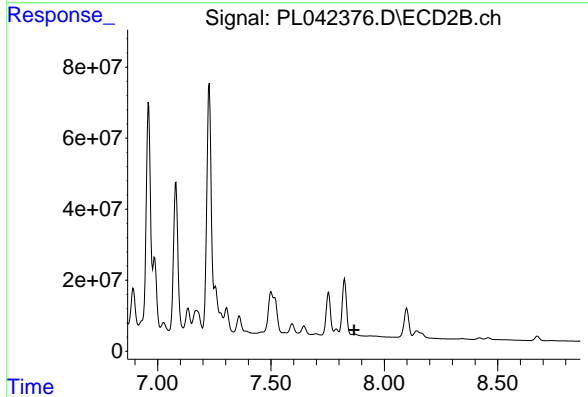


#20 Methoxychlor
 R.T.: 7.699 min
 Delta R.T.: -0.010 min
 Response: 2603477
 Conc: 1.91 ng/ml

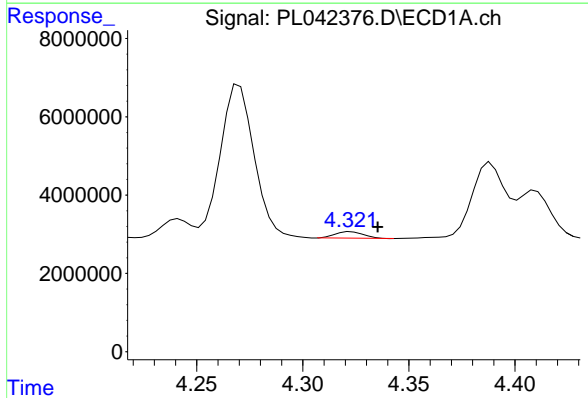


#21 Endrin ketone
 R.T.: 7.150 min
 Delta R.T.: -0.008 min
 Response: 1257708
 Conc: 0.18 ng/ml

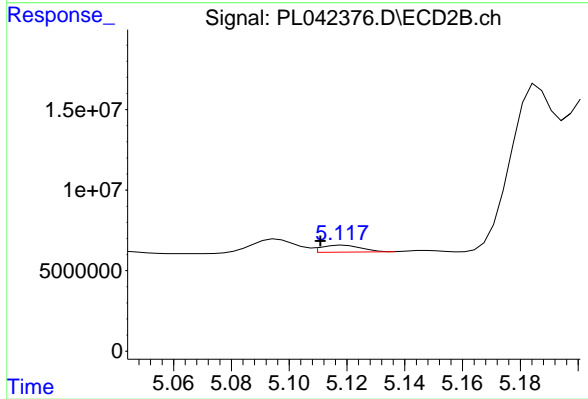
Instrument :
 ECD_L
 ClientSampled :



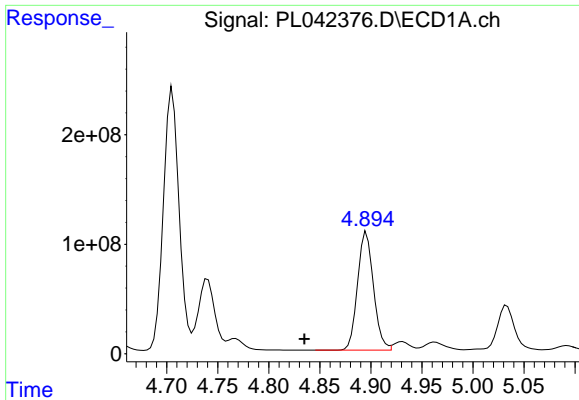
#21 Endrin ketone
 R.T.: 7.870 min
 Delta R.T.: 0.003 min
 Response: -7620556
 Conc: N.D.



#23 Chlordane-1
 R.T.: 4.323 min
 Delta R.T.: -0.013 min
 Response: 1537365
 Conc: 5.56 ng/ml



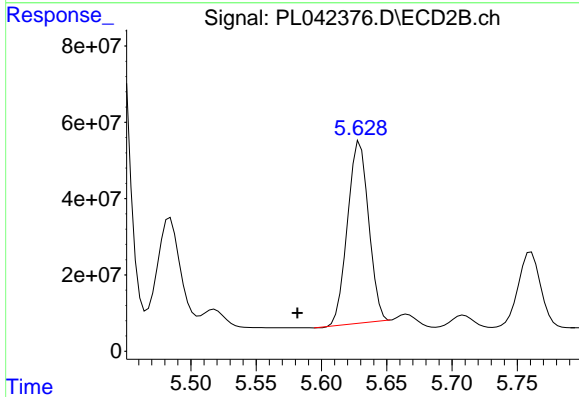
#23 Chlordane-1
 R.T.: 5.119 min
 Delta R.T.: 0.008 min
 Response: 4112303
 Conc: 30.94 ng/ml



#24 Chlordane-2

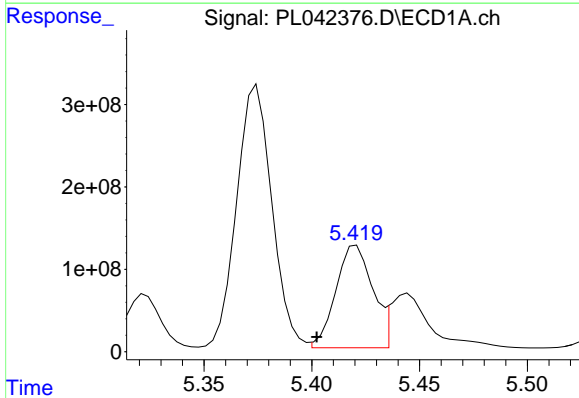
R.T.: 4.896 min
 Delta R.T.: 0.061 min
 Response: 1172464728
 Conc: 4172.13 ng/ml

Instrument :
 ECD_L
 ClientSampled :



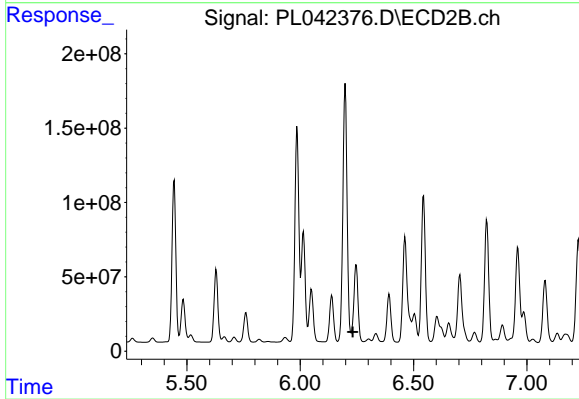
#24 Chlordane-2

R.T.: 5.629 min
 Delta R.T.: 0.048 min
 Response: 535391262
 Conc: 3839.47 ng/ml



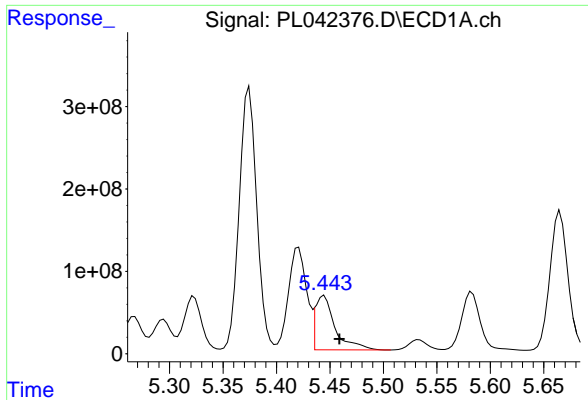
#25 Chlordane-3

R.T.: 5.421 min
 Delta R.T.: 0.018 min
 Response: 1472740201
 Conc: 1680.08 ng/ml



#25 Chlordane-3

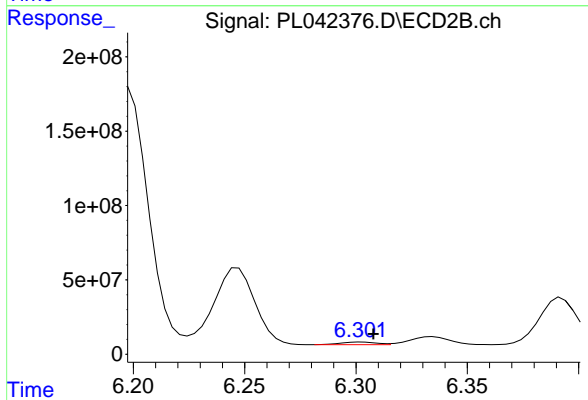
R.T.: 6.247 min
 Delta R.T.: 0.014 min
 Response: -872745250
 Conc: N.D.



#26 Chlordane-4

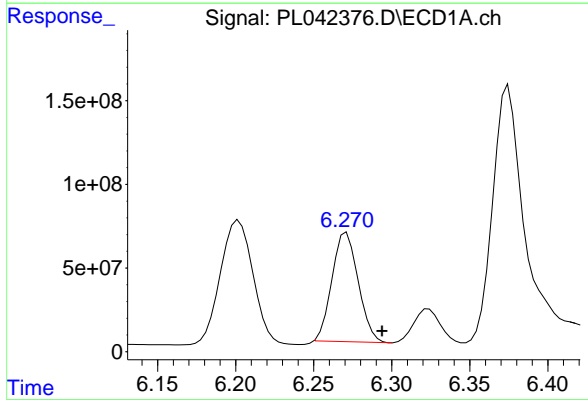
R.T.: 5.445 min
Delta R.T.: -0.014 min
Response: 844814369
Conc: 1113.18 ng/ml

Instrument :
ECD_L
ClientSampleId :



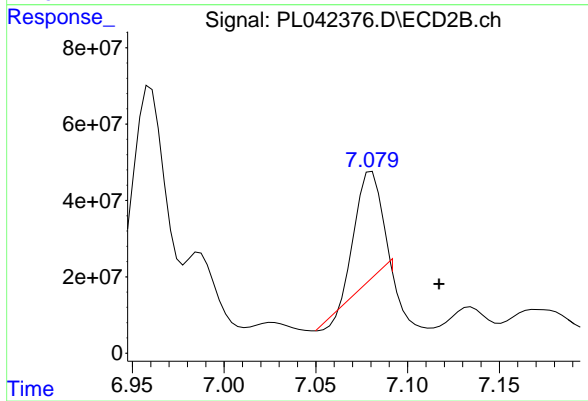
#26 Chlordane-4

R.T.: 6.302 min
Delta R.T.: -0.005 min
Response: 19715064
Conc: 36.03 ng/ml



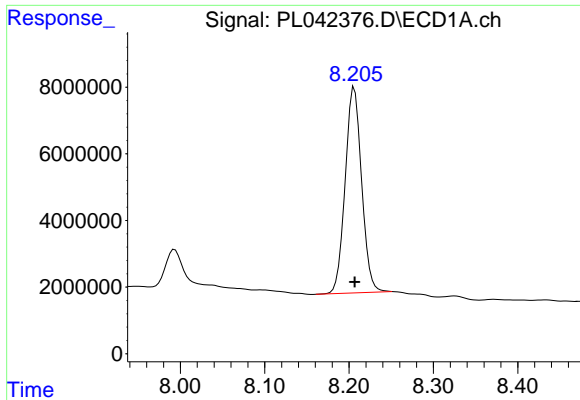
#27 Chlordane-5

R.T.: 6.271 min
Delta R.T.: -0.023 min
Response: 762195484
Conc: 2557.94 ng/ml



#27 Chlordane-5

R.T.: 7.081 min
Delta R.T.: -0.037 min
Response: 264407919
Conc: 2748.65 ng/ml



#28 Decachlorobiphenyl

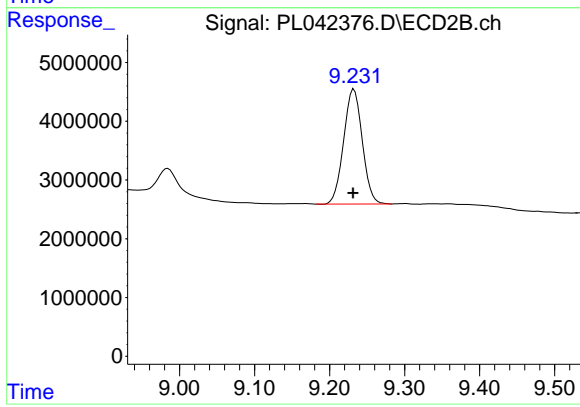
R.T.: 8.206 min

Delta R.T.: 0.000 min

Response: 83911280

Conc: 13.31 ng/ml

Instrument :
ECD_L
ClientSampleId :



#28 Decachlorobiphenyl

R.T.: 9.233 min

Delta R.T.: 0.001 min

Response: 33768189

Conc: 14.00 ng/ml